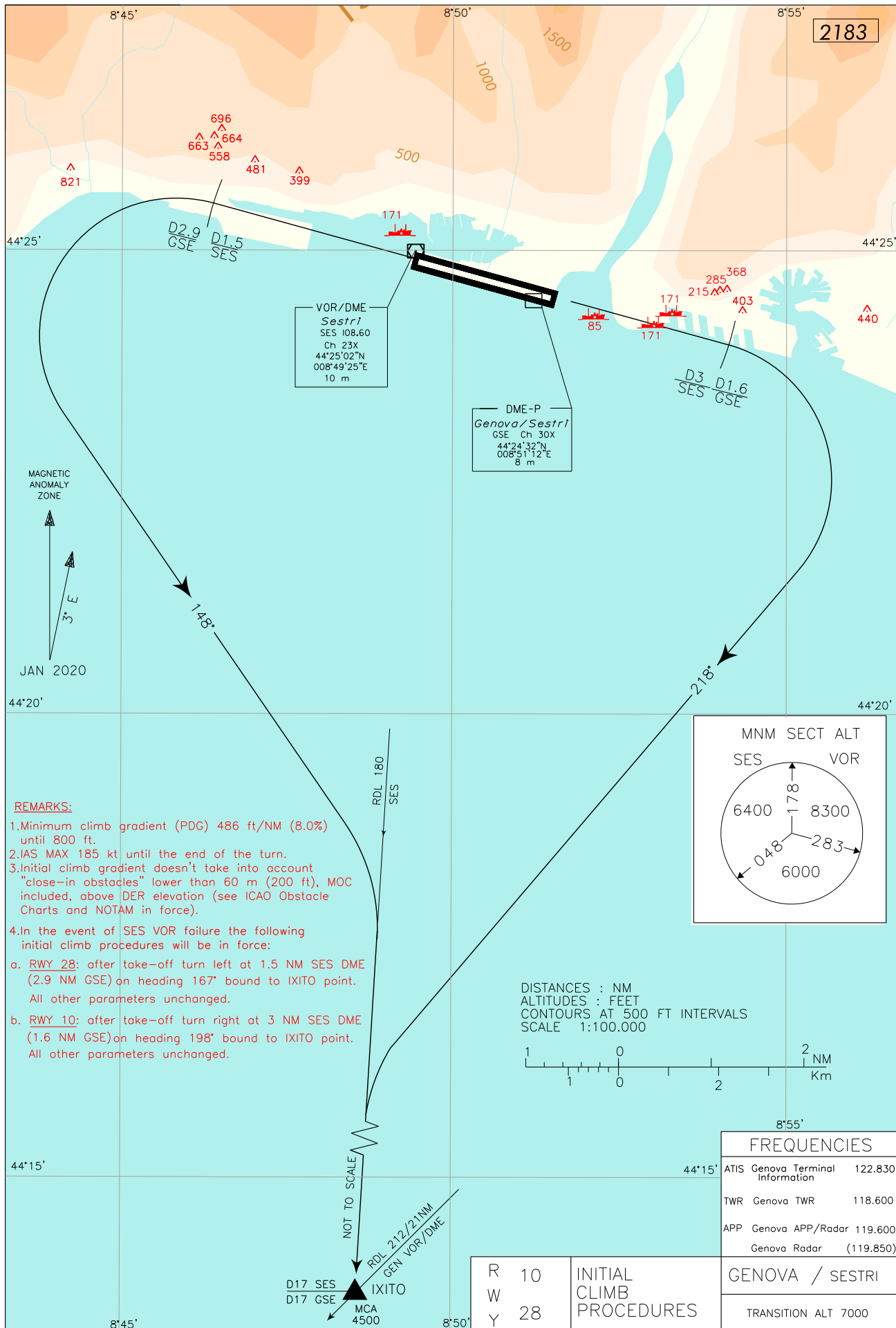


DOC.8168-ED.5-2006 AMDT 4

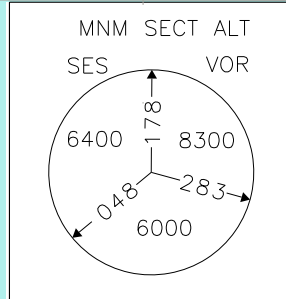
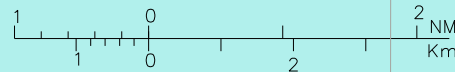
CHANGE: GEN NDB DISMISSED AND ATIS FREQ UPDATED



REMARKS:

1. Minimum climb gradient (PDG) 486 ft/NM (8.0%) until 800 ft.
2. IAS MAX 185 kt until the end of the turn.
3. Initial climb gradient doesn't take into account "close-in obstacles" lower than 60 m (200 ft), MOC included, above DER elevation (see ICAO Obstacle Charts and NOTAM in force).
4. In the event of SES VOR failure the following initial climb procedures will be in force:
 - a. RWY 28: after take-off turn left at 1.5 NM SES DME (2.9 NM GSE) on heading 167° bound to IXITO point. All other parameters unchanged.
 - b. RWY 10: after take-off turn right at 3 NM SES DME (1.6 NM GSE) on heading 198° bound to IXITO point. All other parameters unchanged.

DISTANCES : NM
 ALTITUDES : FEET
 CONTOURS AT 500 FT INTERVALS
 SCALE 1:100.000



FREQUENCIES

ATIS	Genova Terminal Information	122.830
TWR	Genova TWR	118.600
APP	Genova APP/Radar	119.600
	Genova Radar	(119.850)

R	10	INITIAL CLIMB PROCEDURES
W	28	
Y	28	

GENOVA / SESTRI	
TRANSITION ALT 7000	

**GENOVA / SESTRI
INITIAL CLIMB PROCEDURES****Initial climb procedure RWY 28**

After take-off continue RWY heading until 1.5 NM SES DME (2.9 NM GSE DME), then turn left on TR 148° to intercept and follow RDL 180 SES VOR/DME bound to IXITO.

REMARKS

**Minimum climb gradient (PDG) 486 ft/NM (8%) until passing 800 ft.
IAS MAX 185 kt until the end of the turn.**

In the event of SES VOR failure the following initial climb procedures will be in force:
After take-off continue RWY heading until 1.5 NM SES DME (2.9 NM GSE DME), then turn left on TR 167° bound to IXITO.
All other parameters unchanged.

Initial climb procedure RWY 10

After take-off continue RWY heading until 3 NM SES DME (1.6 NM GSE DME) then turn right on TR 218° to intercept and follow RDL 180 SES VOR/DME bound to IXITO.

REMARKS

**Minimum climb gradient (PDG) 486 ft/NM (8%) until passing 800 ft.
IAS MAX 185 kt until the end of the turn.**

In the event of SES VOR failure the following initial climb procedures will be in force:
After take-off continue RWY heading until 3 NM SES DME (1.6 NM GSE DME), then turn right on TR 198° bound to IXITO.
All other parameters unchanged.

Common REMARKS for initial climb RWY 10/28

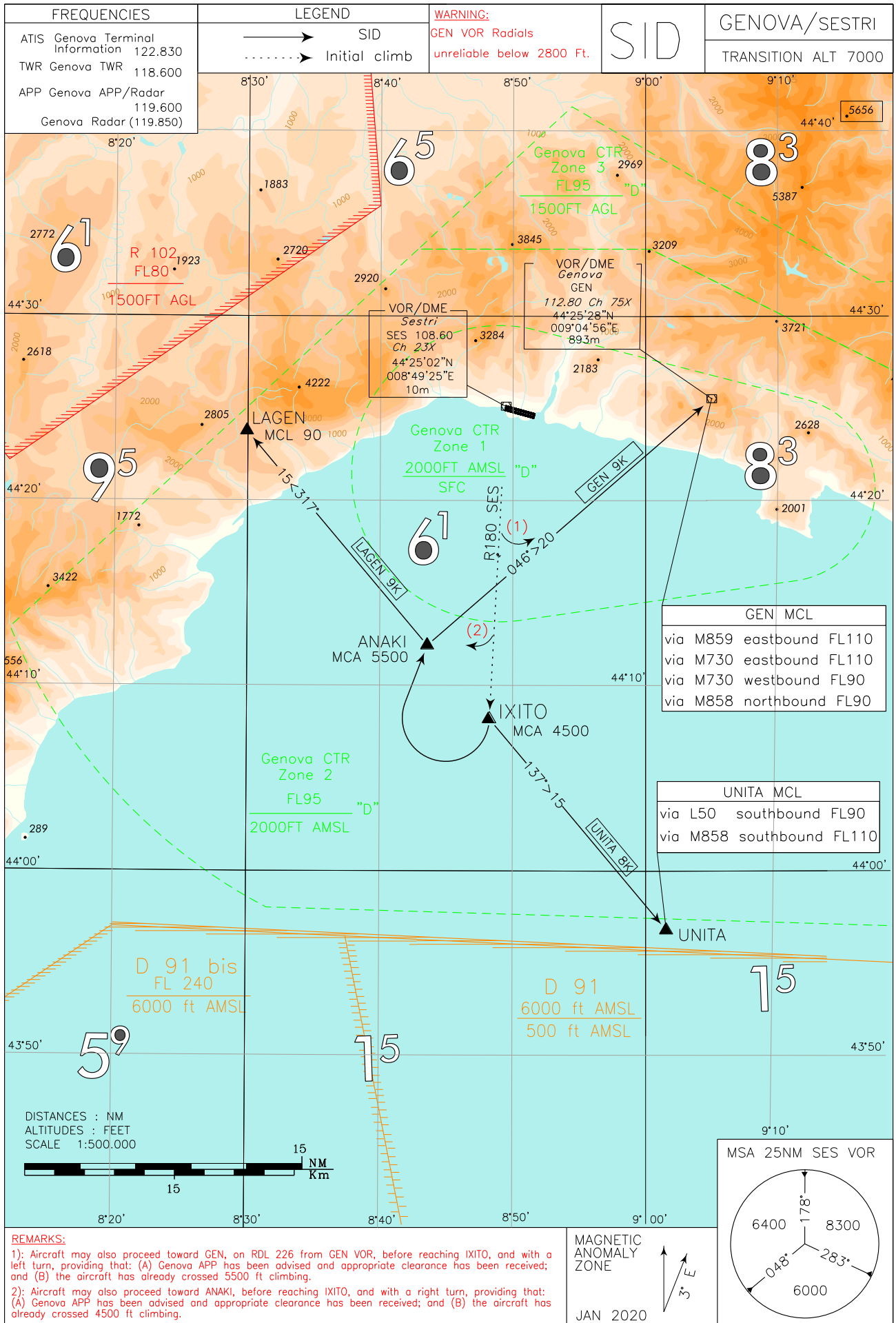
Minimum climb gradient doesn't take into account "close-in" obstacles lower than 60 m (200 ft), MOC included, above DER elevation (see ICAO Aerodrome Obstacle Charts and NOTAM in force).

Due to height/location of obstacles affecting initial climb procedures (see ICAO Aerodrome Obstacle Charts and NOTAM in force), pilots shall adopt a minimum climb gradient in accordance with ICAO Annex 6 for a safe overflying of the obstacles. Such minimum gradient shall be maintained in any foreseeable circumstance.

Intenzionalmente bianca

Intentionally left blank

CHANGE: GEN NDB DISMISSED AND ATIS FREQ UPDATED DOC 8168 ED. 5 - 2006 - AMDT 4



GENOVA / SESTRI**SID DESCRIPTION**

Initial climb executed:

GEN 9K

After IXITO, turn right and proceed via ANAKI (INT RDL 226 GEN VOR / 20NM GEN DME) - GEN VOR.

REMARK

Aircraft may also proceed inbound GEN VOR, on RDL 226 from GEN VOR, before IXITO, and with a left turn providing that Genova APP has been advised and appropriate clearance has been received and the aircraft has already crossed 5500 ft climbing.

MCA/MCL: ANAKI 5500 FT; GEN FL 90 / FL110 according to next route segment

LAGEN 9K

After IXITO turn right and proceed via ANAKI (INT RDL 226 GEN VOR / 20NM GEN DME) – LAGEN (INT RDL 137 TOP VOR/RDL 208 VOG VOR).

REMARK

Right turn toward ANAKI may also be executed before IXITO providing that Genova APP has been advised, appropriate clearance has been received and the aircraft has already crossed 4500 ft climbing.

MCA/MCL: ANAKI 5500 FT; LAGEN FL 90

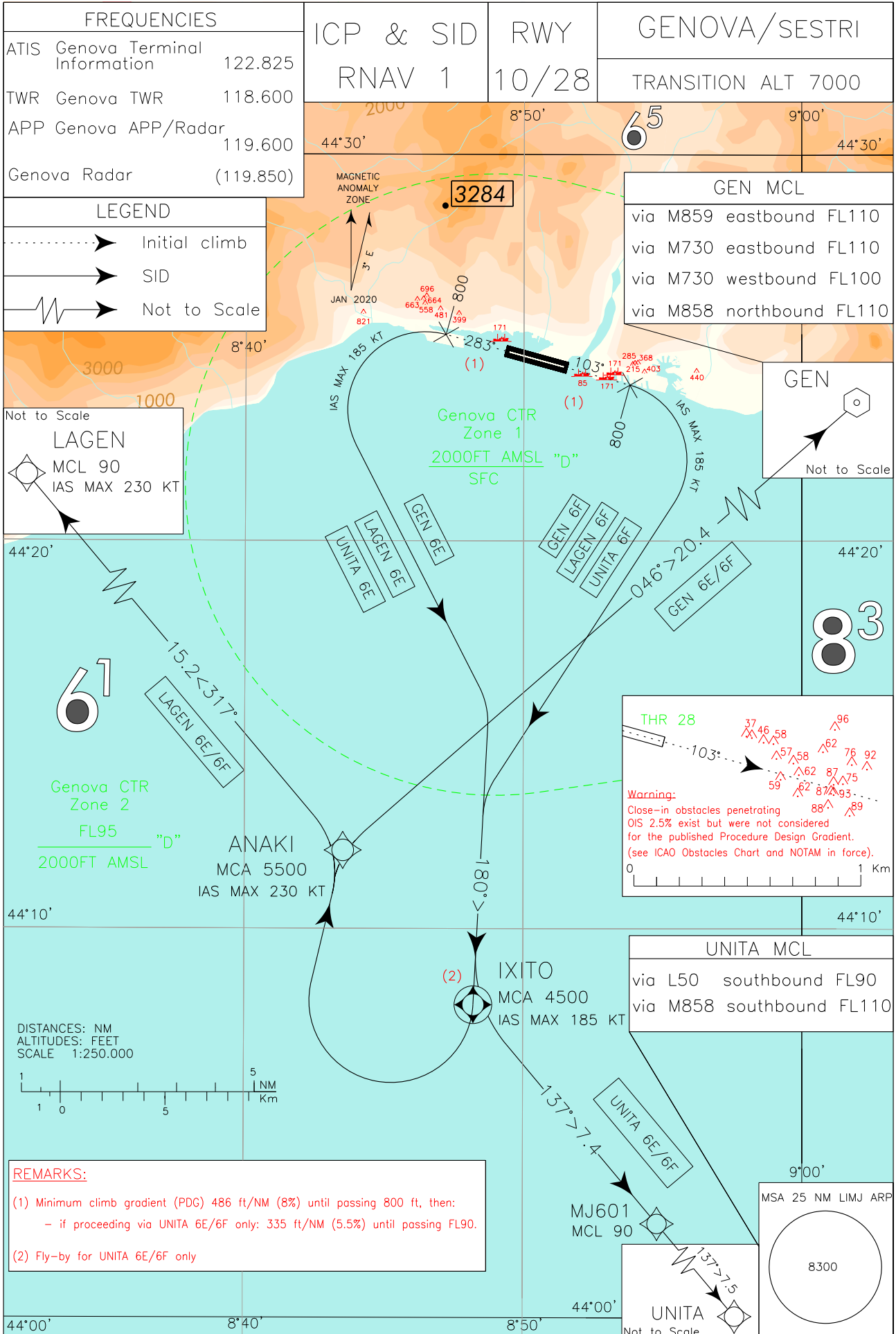
UNITA 8K

After IXITO turn left and proceed to UNITA.

MCA/MCL: UNITA FL 90 / FL110 according to next route segment

Intenzionalmente bianca

Intentionally left blank



GENOVA / SESTRI
ICP & SIDs RNAV 1 RWY 10/28 DESCRIPTION

Initial climb procedure RWY 28

After take-off proceed on Track 283° until leaving 800 ft, then turn left to join the assigned SID.

REMARKS

Minimum climb gradient (PDG) 486 ft/NM (8%) until passing 800 ft, then:

- If proceeding via SID UNITA 6E only: 335 ft/NM (5.5%) until passing FL90.

IAS MAX 185 kt until the end of the turn.

Initial climb procedure RWY 10

After take-off proceed on Track 103° until leaving 800 ft, then turn right to join the assigned SID.

REMARKS

Minimum climb gradient (PDG) 486 ft/NM (8%) until passing 800 ft, then:

- If proceeding via SID UNITA 6F only: 335 ft/NM (5.5%) until passing FL90.

IAS MAX 185 kt until the end of the turn.

WARNING

“Close-in” obstacles penetrating OIS 2.5% exist but were not considered for the published Procedure Design Gradient. (see ICAO Aerodrome Obstacle Charts and NOTAM in force).

Common REMARKS for initial climb RWY 10/28

Due to height/location of obstacles affecting initial climb procedures (see ICAO Aerodrome Obstacle Charts and NOTAM in force), pilots shall adopt a minimum climb gradient in accordance with ICAO Annex 6 for a safe overflying of the obstacles. Such minimum gradient shall be maintained in any foreseeable circumstance.

SID RNAV1 RWY 28

Initial Climb procedure executed:

GEN 6E

Path Terminator	Waypoint Identifier	Fly Over	Course °M (°T)	Magnetic Variation	Distance (NM)	Turn Direction	Altitude (Ft)	Speed Limit (Kt)	Navigation Specification
CA	-	-	283 (285.3)	-	-	-	+800	-185	RNAV1
CF	IXITO	Y	180° (182.9°)	3°	-	L	+4500	-185	RNAV1
DF	ANAKI	-	-	-	-	R	+5500	-230	RNAV1
TF	GEN	-	046° (048.8°)	-	20.4	-	*	-	RNAV1

*

depending on the next route segment

LAGEN 6E

Path Terminator	Waypoint Identifier	Fly Over	Course °M (°T)	Magnetic Variation	Distance (NM)	Turn Direction	Altitude (Ft)	Speed Limit (Kt)	Navigation Specification
CA	-	-	283 (285.3)	-	-	-	+800	-185	RNAV1
CF	IXITO	Y	180° (182.9°)	3°	-	L	+4500	-185	RNAV1
DF	ANAKI	-	-	-	-	R	+5500	-230	RNAV1
TF	LAGEN	-	317° (319.8)	-	15.2	-	+FL90	-230	RNAV1

UNITA 6E

Path Terminator	Waypoint Identifier	Fly Over	Course °M (°T)	Magnetic Variation	Distance (NM)	Turn Direction	Altitude (Ft)	Speed Limit (Kt)	Navigation Specification
CA	-	-	283 (285.3)	-	-	-	+800	-185	RNAV1
CF	IXITO	-	180° (182.9°)	3°	-	L	+4500	-185	RNAV1
TF	MJ601	-	137° (139.9)	-	7.4	-	+FL90	-	RNAV1
TF	UNITA	-	137° (140.0)	-	7.5	-	*	-	RNAV1

*
depending on the next route segment

SID RNAV1 RWY 10

Initial Climb procedure executed:

GEN 6F

Path Terminator	Waypoint Identifier	Fly Over	Course °M (°T)	Magnetic Variation	Distance (NM)	Turn Direction	Altitude (Ft)	Speed Limit (Kt)	Navigation Specification
CA	-	-	103 (105.3)	-	-	-	+800	-185	RNAV1
CF	IXITO	Y	180° (182.9°)	3°	-	-	+4500	-185	RNAV1
DF	ANAKI	-	-	-	-	R	+5500	-230	RNAV1
TF	GEN	-	046° (048.8°)	-	20.4	-	*	-	RNAV1

*
depending on the next route segment

LAGEN 6F

Path Terminator	Waypoint Identifier	Fly Over	Course °M (°T)	Magnetic Variation	Distance (NM)	Turn Direction	Altitude (Ft)	Speed Limit (Kt)	Navigation Specification
CA	-	-	103 (105.3)	-	-	-	+800	-185	RNAV1
CF	IXITO	Y	180° (182.9°)	3°	-	-	+4500	-185	RNAV1
DF	ANAKI	-	-	-	-	R	+5500	-230	RNAV1
TF	LAGEN	-	317° (319.8)	-	15.2	-	+FL90	-230	RNAV1

UNITA 6F

Path Terminator	Waypoint Identifier	Fly Over	Course °M (°T)	Magnetic Variation	Distance (NM)	Turn Direction	Altitude (Ft)	Speed Limit (Kt)	Navigation Specification
CA	-	-	103 (105.3)	-	-	-	+800	-185	RNAV1
CF	IXITO	-	180° (182.9°)	3°	-	-	+4500	-185	RNAV1
TF	MJ601	-	137° (139.9)	-	7.4	-	+FL90	-	RNAV1
TF	UNITA	-	137° (140.0)	-	7.5	-	*	-	RNAV1

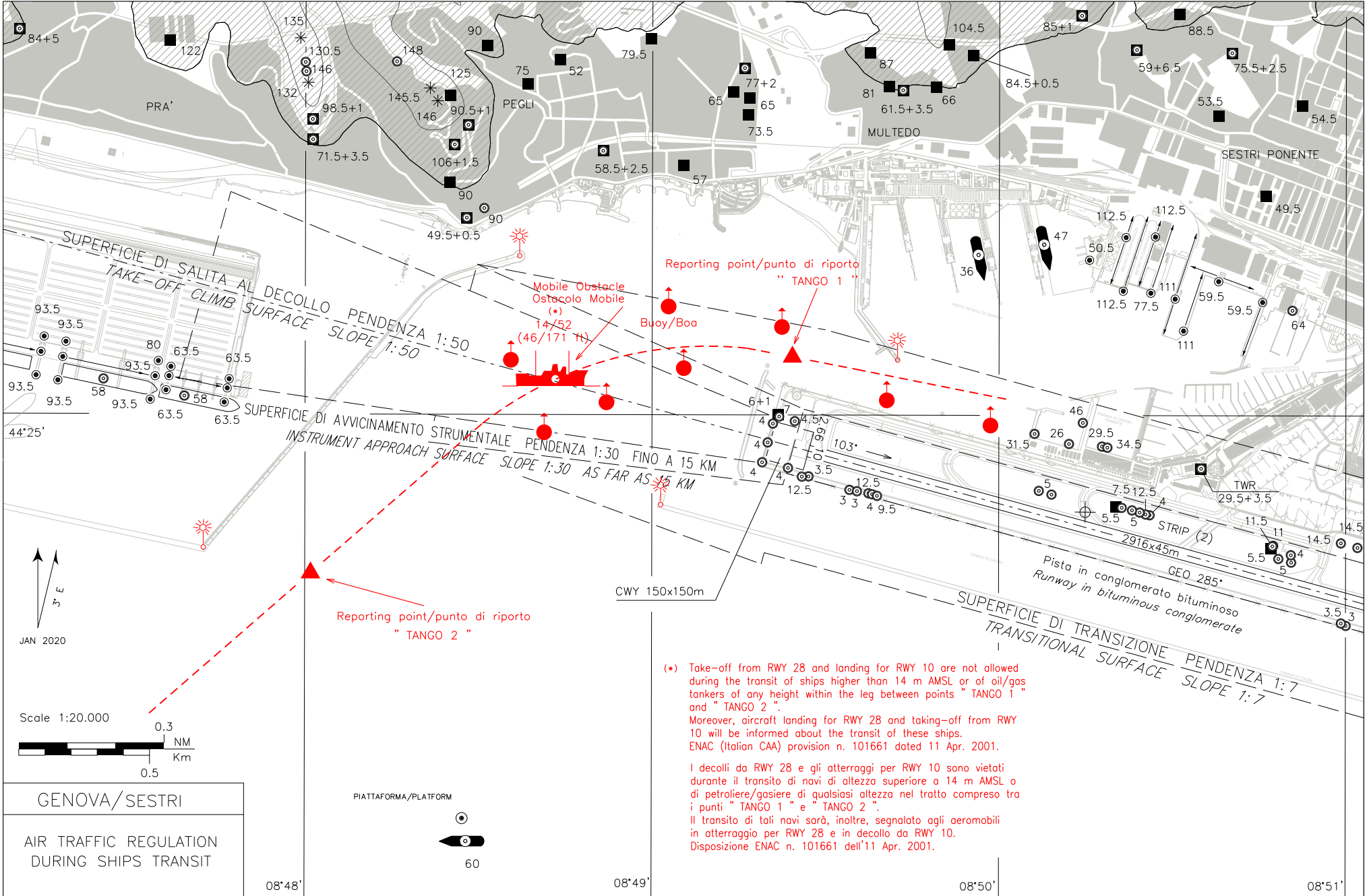
*
depending on the next route segment

WAYPOINT LIST

Waypoint Identifier	Coordinates
MJ601	44°02'26.24"N 008°54'48.02"E

Intenzionalmente bianca

Intentionally left blank



(*) Take-off from RWY 28 and landing for RWY 10 are not allowed during the transit of ships higher than 14 m AMSL or of oil/gas tankers of any height within the leg between points "TANGO 1" and "TANGO 2".
 Moreover, aircraft landing for RWY 28 and taking-off from RWY 10 will be informed about the transit of these ships.
 ENAC (Italian CAA) provision n. 101661 dated 11 Apr. 2001.

I decolli da RWY 28 e gli atterraggi per RWY 10 sono vietati durante il transito di navi di altezza superiore a 14 m AMSL o di petroliere/gasiere di qualsiasi altezza nel tratto compreso tra i punti "TANGO 1" e "TANGO 2".
 Il transito di tali navi sarà, inoltre, segnalato agli aeromobili in atterraggio per RWY 28 e in decollo da RWY 10.
 Disposizione ENAC n. 101661 dell'11 Apr. 2001.

GENOVA/SESTRI
 AIR TRAFFIC REGULATION
 DURING SHIPS TRANSIT

