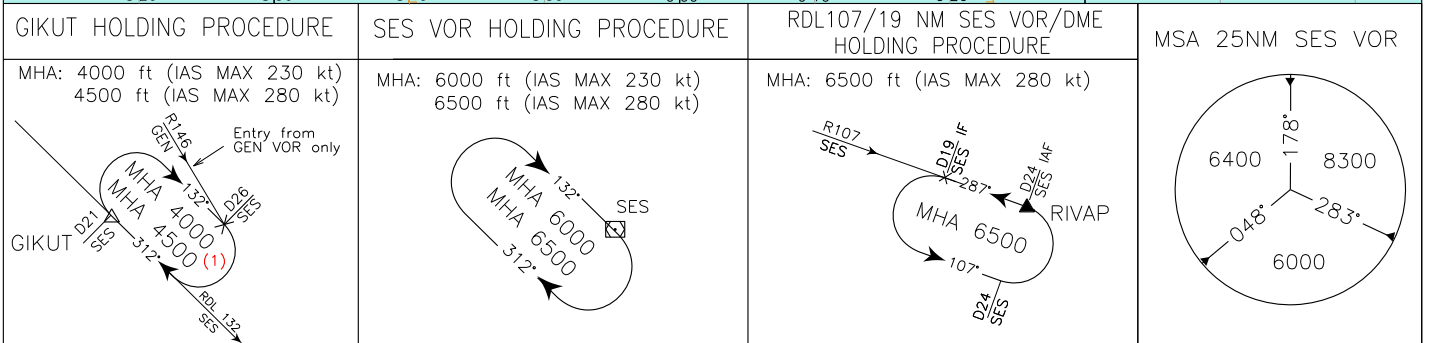
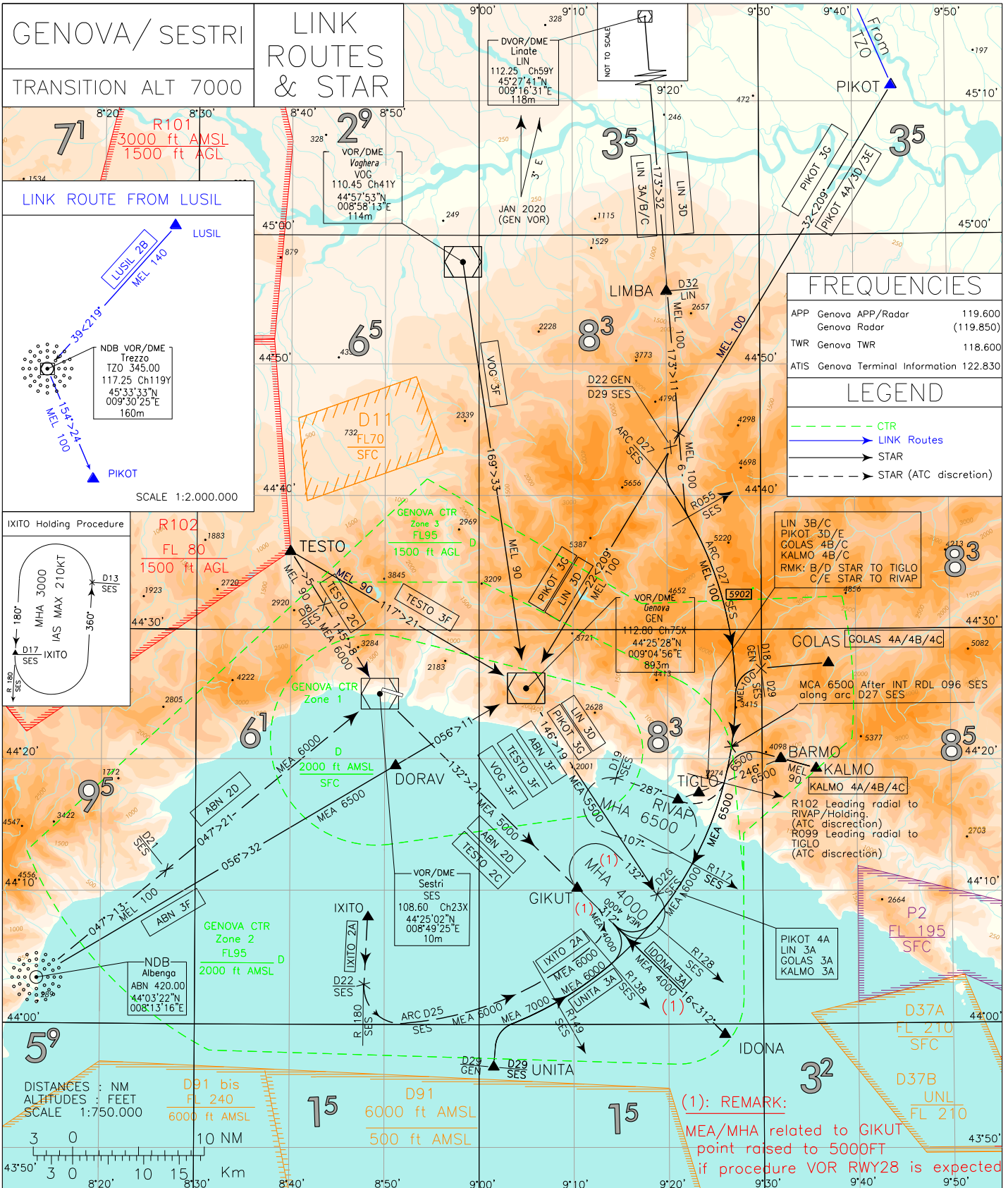


DOC 8168 ED. 5 - 2006 - AMDT 4

CHANGE: REVISED CHART



GENOVA SESTRI**LINK ROUTES****LUSIL 2B**

LUSIL - TR 219° (RDL 039 TZO VOR) – TZO VOR, then turn left on TR 154° (RDL 154 TZO VOR) bound to PIKOT.

MEL: LUSIL – TZO VOR: FL 140; TZO VOR – PIKOT: FL 100

STAR**ABN 2D (ATC discretion)**

ABN NBD – TR 047° (QDR 047° ABN NDB) – SES VOR/DME, then turn right and proceed on TR 132° (RDL 132 SES VOR) bound to GIKUT.

MEL/MEA: ABN NBD – QDR 047° ABN NDB/21 NM SES DME: FL 100;
QDR 047° ABN NDB/21NM SES DME – SES VOR/DME: 6000 FT;
SES VOR/DME – GIKUT: 5000 FT

ABN 3F

ABN NBD – TR 056° (QDR 056° ABN NDB) – DORAV – GEN VOR, then turn right and proceed on TR 146° (RDL 146 GEN VOR) until 26 NM SES (18.5 NM GEN) DME, then turn right bound to GIKUT.

MEA: ABN NBD – GEN VOR: 6500 FT;
GEN VOR– RDL 146 GEN VOR - 26 NM SES (D18.5 GEN) DME: 5500 FT;
RDL 146 GEN VOR - 26 NM SES (18.5 NM GEN) DME – GIKUT: 4000 FT (5000 FT if procedure VOR RWY 28 is expected)

GOLAS 4A

GOLAS – TR 263° (RDL 083 GEN VOR). At 29 NM SES (18 NM GEN) DME turn left until joining ARC 27 NM SES DME. Crossing RDL 128 SES VOR turn right until joining TR 312° (RDL 132 SES VOR) inbound GIKUT.

MEL/MEA: GOLAS – INT ARC 27 NM SES DME/RDL 096 SES VOR: FL 100;
INT ARC 27 NM SES DME/RDL 096 SES VOR – INT ARC 27 NM SES DME/RDL 117 SES VOR: 6500 FT;
INT ARC 27 NM SES DME/RDL 117 SES VOR – INT ARC 27 NM SES DME/RDL 128 SES VOR: 6000 FT;
INT ARC 27 NM SES DME/RDL 128 SES VOR – GIKUT: 4000 FT (5000 FT if procedure VOR RWY 28 is expected)

GOLAS 4B (ATC discretion)

GOLAS – TR 263° (RDL 083 GEN VOR). At 29 NM SES (18 NM GEN) DME turn left until joining ARC 27 NM SES DME. Crossing RDL 099 SES VOR turn right inbound TIGLO.

MEL/MEA: GOLAS – INT ARC 27 NM SES DME/RDL 096 SES VOR: FL 100;
INT ARC 27 NM SES DME/RDL 096 SES VOR – TIGLO: 6500 FT

GOLAS 4C (ATC discretion)

GOLAS – TR 263° (RDL 083 GEN VOR). At 29 NM SES (18 NM GEN) DME turn left until joining ARC 27 NM SES DME. Crossing RDL 102 SES VOR turn right bound to RIVAP.

MEL/MEA: GOLAS – INT ARC 27 NM SES DME/RDL 096 SES VOR: FL 100;
INT ARC 27 NM SES DME/RDL 096 SES VOR – RIVAP: 6500 FT

IDONA 3A

IDONA – TR 312° (RDL 132 SES VOR) bound to GIKUT.

MEA: IDONA – GIKUT: 4000 FT (5000 FT if procedure VOR RWY 28 is expected)

IXITO 2A (ATC discretion)

IXITO - RDL180/22 NM SES VOR/DME, then turn left until joining ARC 25 NM SES DME. Crossing RDL 138 SES VOR turn left until joining TR 312° (RDL 132 SES VOR) bound to GIKUT.

MEL/MEA: IXITO – INT ARC 25 NM SES DME/RDL 138 SES VOR: 6000 FT;
INT ARC 25 NM SES DME/RDL 138 SES VOR – GIKUT: 4000 FT (5000 FT if procedure VOR RWY 28 is expected)

KALMO 4A

KALMO – TR 283° (RDL 103 GEN VOR) – BARMO, then turn left until joining ARC 27 NM SES DME. Crossing RDL 128 SES VOR turn right until joining TR 312° (RDL 132 SES VOR) bound to GIKUT.

MEL/MEA: KALMO – BARMO: FL 90,
BARMO – INT ARC 27 NM SES DME/RDL 117 SES VOR: 6500 FT;
INT ARC 27 NM SES DME/RDL 117 SES VOR – INT ARC 27 NM SES DME/RDL 128 SES VOR: 6000 FT;
INT ARC 27 NM SES DME/RDL 128 SES VOR – GIKUT: 4000 FT (5000 FT if procedure VOR RWY 28 is expected)

KALMO 4B (ATC discretion)

KALMO – TR 283° (RDL 103 GEN VOR) – BARMO, then turn left TR 246° bound to TIGLO.

MEL/MEA: KALMO – BARMO: FL 90, BARMO – TIGLO: 6500 FT

KALMO 4C (ATC discretion)

KALMO – TR 283° (RDL 103 GEN VOR) – BARMO, then turn left TR 246° inbound TIGLO, then RIVAP.

MEL/MEA: KALMO – BARMO: FL 90, BARMO – RIVAP: 6500 FT

LIN 3A (ATC discretion)

LIN VOR/DME – TR 173° (RDL 173 LIN VOR) until intercepting RDL 055 SES VOR, then turn left until joining ARC 27 NM SES DME. Crossing RDL 128 SES VOR turn right until joining TR 312° (RDL 132 SES VOR) bound to GIKUT.

MEL/MEA: LIN VOR/DME – INT ARC 27 NM SES DME/RDL 096 SES VOR: FL 100;
 INT ARC 27 NM SES DME/RDL 096 SES VOR – INT ARC 27 NM SES DME/RDL 117 SES VOR: 6500 FT;
 INT ARC 27 NM SES DME/RDL 117 SES VOR – INT ARC 27 NM SES DME/RDL 128 SES VOR: 6000 FT;
 INT ARC 27 NM SES DME/RDL 128 SES VOR – GIKUT: 4000 FT (5000 FT if procedure VOR RWY 28 is expected)

LIN 3B (ATC discretion)

LIN VOR/DME – TR 173° (RDL 173 LIN VOR) until intercepting RDL 055 SES VOR, then turn left until joining ARC 27 NM SES DME. Crossing RDL 099 SES VOR turn right inbound TIGLO.

MEL/MEA: LIN VOR/DME – INT ARC 27 NM SES DME/RDL 096 SES VOR: FL 100;
 INT ARC 27 NM SES DME/RDL 096 SES VOR – TIGLO: 6500 FT

LIN 3C (ATC discretion)

LIN VOR/DME – TR 173° (RDL 173 LIN VOR) until intercepting RDL 055 SES VOR, then turn left until joining ARC 27 NM SES DME. Crossing RDL 102 SES VOR turn right inbound RIVAP.

MEL/MEA: LIN VOR/DME – INT ARC 27 NM SES DME/RDL 096 SES VOR: FL 100;
 INT ARC 27 NM SES DME/RDL 096 SES VOR – RIVAP: 6500 FT

LIN 3D

LIN VOR/DME – TR 173° (RDL 173 LIN VOR) – LIMBA – TR 173° (RDL 173 LIN VOR) until joining TR 209° (RDL 029 GEN VOR) inbound GEN VOR, then turn left and proceed on TR 146° (RDL 146 GEN VOR) until 26 NM SES (18.5 NM GEN) DME, then turn right bound to GIKUT.

MEL/MEA: LIN VOR/DME – GEN VOR: FL 100;
 GEN VOR – RDL 146 GEN VOR - 26 NM SES (D18.5 GEN) DME: 5500 FT;
 RDL 146 GEN VOR - 26 NM SES (18.5 NM GEN) DME – GIKUT: 4000 FT (5000 FT if procedure VOR RWY 28 is expected)

PIKOT 4A

PIKOT – TR 209° (RDL 029 GEN VOR). At 29 NM SES (22 NM GEN) DME turn left until joining ARC 27 NM SES DME. Crossing RDL 128 SES VOR turn right until joining TR 312° (RDL 132 SES VOR) inbound GIKUT.

MEL/MEA: PIKOT – INT ARC 27 NM SES DME/RDL 096 SES VOR: FL 100;
 INT ARC 27 NM SES DME/RDL 096 SES VOR – INT ARC 27 NM SES DME/RDL 117 SES VOR: 6500 FT;
 INT ARC 27 NM SES DME/RDL 117 SES VOR – INT ARC 27 NM SES DME/RDL 128 SES VOR: 6000 FT;
 INT ARC 27 NM SES DME/RDL 128 SES VOR – GIKUT: 4000 FT (5000 FT if procedure VOR RWY 28 is expected)

PIKOT 3D (ATC discretion)

PIKOT – TR 209° (RDL 029 GEN VOR). At 29 NM SES (22 NM GEN) DME turn left until joining ARC 27 NM SES DME. Crossing RDL 099 SES VOR turn right inbound TIGLO.

MEL/MEA: PIKOT – INT ARC 27 NM SES DME/RDL 096 SES VOR: FL 100;
 INT ARC 27 NM SES DME/RDL 096 SES VOR – TIGLO: 6500 FT

PIKOT 3E (ATC discretion)

PIKOT – TR 209° (RDL 029 GEN VOR). At 29 NM SES (22 NM GEN) DME turn left until joining ARC 27 NM SES DME. Crossing RDL 102 SES VOR turn right inbound RIVAP.

MEL/MEA: PIKOT – INT ARC 27 NM SES DME/RDL 096 SES VOR: FL 100;
 INT ARC 27 NM SES DME/RDL 096 SES VOR – RIVAP: 6500 FT

PIKOT 3G

PIKOT – TR 209° (RDL 029 GEN VOR) – GEN VOR, then turn left and proceed on TR 146° (RDL 146 GEN VOR) until 26 NM SES (18.5 NM GEN) DME, then turn right bound to GIKUT.

MEL/MEA: PIKOT – GEN VOR: FL 100;
 GEN VOR – RDL 146 GEN VOR - 26 NM SES (D18.5 GEN) DME: 5500 FT;
 RDL 146 GEN VOR - 26 NM SES (18.5 NM GEN) DME – GIKUT: 4000 FT (5000 FT if procedure VOR RWY 28 is expected)

TESTO 2C (ATC discretion)

TESTO – TR 145° (RDL 325 SES VOR) – SES VOR/DME – TR 132° (RDL 132 SES VOR) – GIKUT.

MEL/MEA: TESTO – RDL 325/8NM SES VOR/DME: FL 90;
 RDL 325/8NM SES VOR/DME – SES VOR/DME: 6000 FT;
 SES VOR/DME – GIKUT: 5000 FT

TESTO 3F

TESTO – TR 117° (RDL 297 GEN VOR) – GEN VOR, then turn right and proceed on TR 146° (RDL 146 GEN VOR) until 26 NM SES (18.5 NM GEN) DME, then turn right bound to GIKUT.

MEL/MEA: TESTO – GEN VOR: FL 90;
 GEN VOR – RDL 146 GEN VOR - 26 NM SES (D18.5 GEN) DME: 5500 FT;
 RDL 146 GEN VOR - 26 NM SES (18.5 NM GEN) DME – GIKUT: 4000 FT (5000 FT if procedure VOR RWY 28 is expected)

UNITA 3A

Over UNITA turn right until joining ARC 27 NM SES DME. Crossing RDL 138 SES VOR turn left until joining TR 312° (RDL 132 SES VOR) bound to GIKUT.

MEA: UNITA – INT ARC 27 NM SES DME/RDL 149 SES VOR: 7000 FT;
INT ARC 27 NM SES DME/RDL 149 SES VOR – INT ARC 27 NM SES DME/RDL 138: 6000 FT;
INT ARC 27 NM SES DME/RDL 138 – GIKUT: 4000 FT (5000 FT if procedure VOR RWY 28 is expected)

VOG 3F

VOG VOR– TR 169° (RDL 169 VOG VOR) – GEN VOR, then turn left and proceed on TR 146° (RDL 146 GEN VOR) until 26 NM SES (18.5 NM GEN) DME, then turn right bound to GIKUT.

MEL/MEA: VOG VOR– GEN VOR: FL 90;
GEN VOR– RDL 146 GEN VOR - 26 NM SES (D18.5 GEN) DME: 5500 FT;
RDL 146 GEN VOR - 26 NM SES (18.5 NM GEN) DME – GIKUT: 4000 FT (5000 FT if procedure VOR RWY 28 is expected)

Intenzionalmente bianca

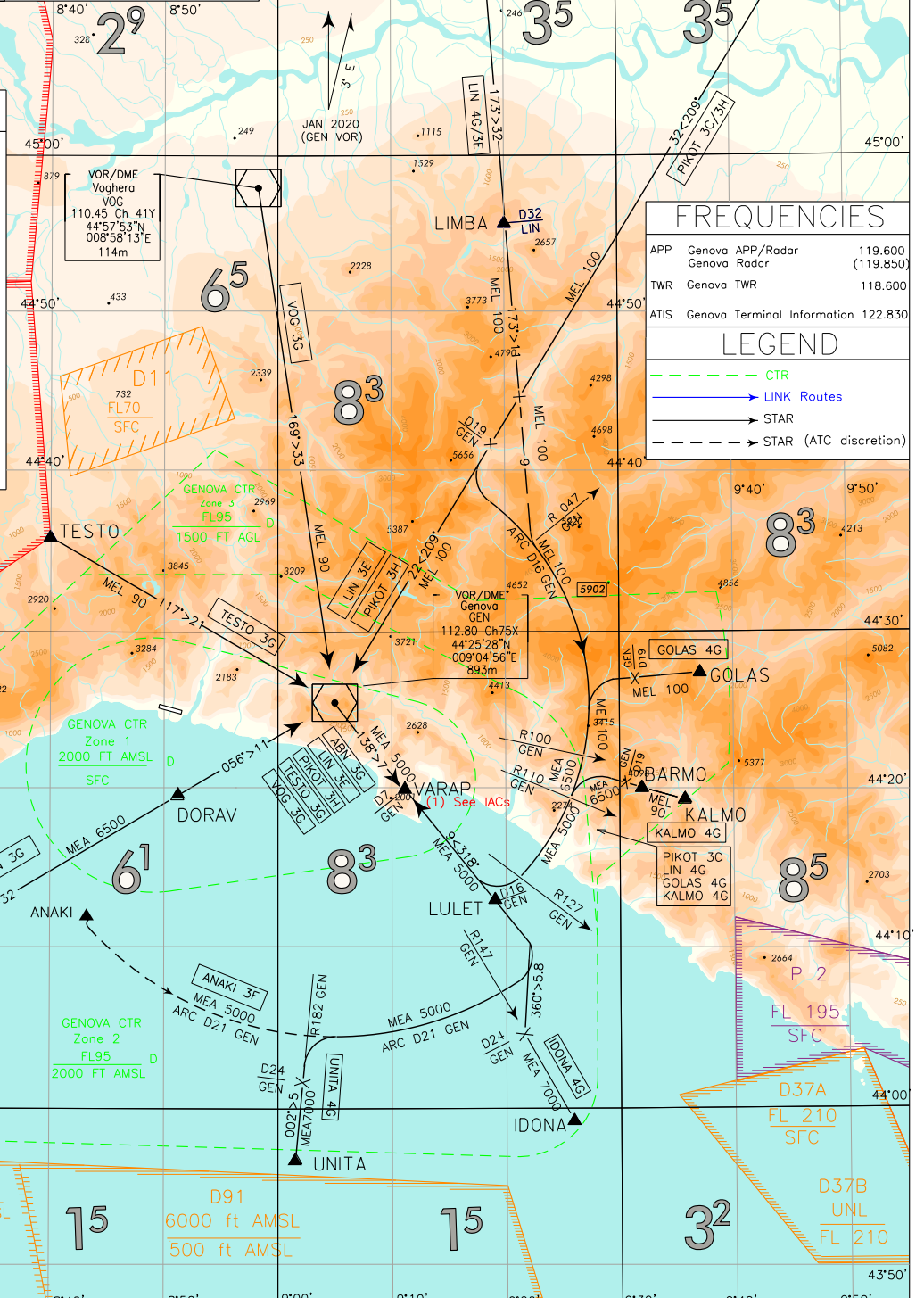
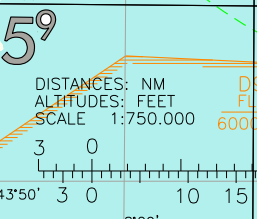
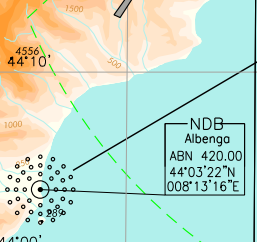
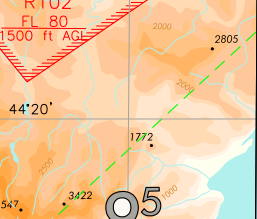
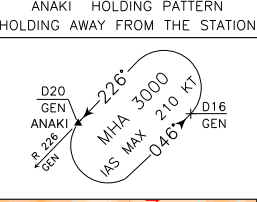
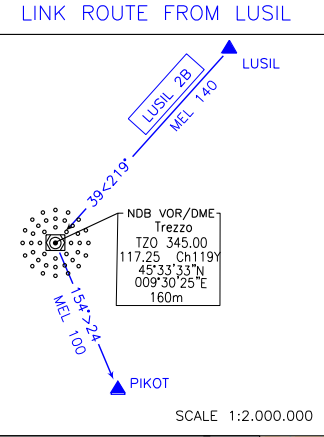
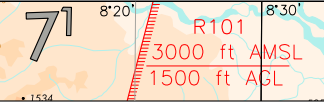
Intentionally left blank

DOC 8168 ED. 5 - 2006 - AMDT 4

CHANGE: GEN NDB DISMISSED; GEN VOR HOLDING PROC. MODIFIED; VOG NDB DISMISSED; ABN3G, ANAKI 3F, GOLAS4G, IDONA4G, KALMO4G, LIN3E, LIN4G, PIKOT3C, PIKOT3H, TESTO3G, UNITA4G, VOG3G MODIFIED; ATIS FREQ UPDATED

GENOVA/SESTRI
TRANSITION ALT 7000

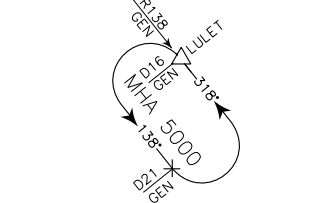
LINK ROUTES & STAR
SES VOR INOPERATIVE



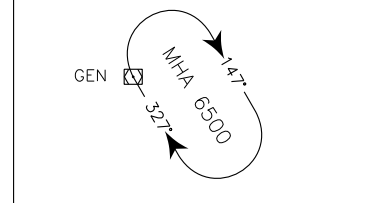
FREQUENCIES		
APP Genova APP/Radar		119.600
Genova Radar		(119.850)
TWR Genova TWR		118.600
ATIS Genova Terminal Information		122.830

LEGEND	
	CTR
	LINK Routes
	STAR
	STAR (ATC discretion)

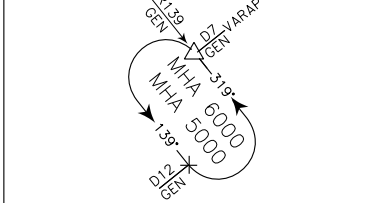
LULET HOLDING PROCEDURE (ATC discretion)
MHA: 5000 ft (IAS MAX 230 kt)
6000 ft (IAS MAX 280 kt)



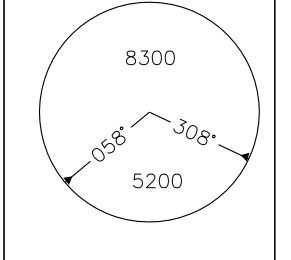
GEN VOR HOLDING PROC.
MHA: 6500 ft (IAS MAX 230 kt)
TL (IAS MAX 280 kt)



VARAP HOLDING PROCEDURE
MHA: 5000 ft (IAS MAX 230 kt)
6000 ft (IAS MAX 280 kt)



MSA 25NM GEN VOR



GENOVA SESTRI**LINK ROUTES SES VOR INOPERATIVE****LUSIL 2B**

LUSIL - TR 219° (RDL 039 TZO VOR) – TZO VOR, then turn left on TR 154° (RDL 154 TZO VOR) bound to PIKOT.

MEL: LUSIL – TZO VOR: FL 140; TZO VOR – PIKOT: FL 100

STAR SES VOR INOPERATIVE**ABN 3G**

ABN NBD – TR 056° (QDR 056° ABN NDB) – DORAV – GEN VOR then turn right and proceed on TR 138° (RDL 138 GEN VOR) bound to VARAP.

MEA: ABN NBD – GEN VOR: 6500 FT;
GEN VOR– VARAP: 5000 FT

ANAKI 3F (ATC discretion)

Over ANAKI turn right to intercept and follow ARC 21 NM GEN DME. Crossing RDL 147 GEN VOR turn left to intercept and follow RDL 138 GEN VOR bound to VARAP.

MEA: 5000 FT

GOLAS 4G

GOLAS – TR 263° (RDL 083 GEN VOR). At 19 NM GEN DME turn left until joining ARC 16 NM GEN DME.
Crossing RDL 127 GEN VOR turn right to intercept and follow RDL 138 GEN VOR bound to VARAP.

MEL/MEA: GOLAS – INT ARC 16 NM GEN DME/RDL 100 GEN VOR: FL 100,
INT ARC 16 NM GEN DME/RDL 100 GEN VOR– INT ARC 16 NM GEN DME/RDL 110 GEN VOR: 6500 FT;
INT ARC 16 NM GEN DME/RDL 110 GEN VOR - VARAP: 5000 FT

IDONA 4G

IDONA - TR 327° (RDL 147 GEN VOR). At RDL 147/24 NM GEN VOR/DME turn right TR 360° to intercept and follow RDL 138 GEN VOR bound to LULET, then proceed to VARAP.

MEA: IDONA – LULET: 7000 FT, LULET – VARAP: 5000 FT

KALMO 4G

KALMO – TR 283° (RDL 103 GEN VOR). At 19 NM GEN DME turn left until joining ARC 16 NM GEN DME.
Crossing RDL 127 GEN VOR turn right to intercept and follow RDL 138 GEN VOR direct to VARAP.

MEL/MEA: KALMO – RDL 103/19 NM GEN VOR/DME: FL 90,
RDL 103/19 NM GEN VOR/DME – INT ARC 16 NM GEN DME/RDL 110 GEN VOR: 6500 FT;
INT ARC 16 NM GEN DME/RDL 110 GEN VOR - VARAP: 5000 FT

LIN 3E

LIN VOR/DME – TR 173° (RDL 173 LIN VOR) – LIMBA – TR 173° (RDL 173 LIN VOR) until joining TR 209° (RDL 029 GEN VOR) bound to GEN VOR, then turn left and proceed on TR 138° (RDL 138 GEN VOR) bound to VARAP.

MEL/MEA: LIN VOR/DME – GEN VOR: FL 100
GEN VORDB – VARAP: 5000 FT

LIN 4G (ATC discretion)

LIN VOR/DME – TR 173° (RDL 173 LIN VOR) – LIMBA. Proceed on TR 173° (RDL 173 LIN VOR) to join ARC 16 NM GEN DME.
Crossing RDL 127 GEN VOR turn right to intercept and follow RDL 138 GEN VOR bound to VARAP.

MEL/MEA: LIN VOR/DME – LIMBA – INT ARC 16 NM GEN DME/RDL 100 GEN VOR: FL 100,
INT ARC 16 NM GEN DME/RDL 100 GEN VOR– INT ARC 16 NM GEN DME/RDL 110 GEN VOR: 6500 FT;
INT ARC 16 NM GEN DME/RDL 110 GEN VOR - VARAP: 5000 FT

PIKOT 3C

PIKOT – TR 209° (RDL 029 GEN VOR). At 19 NM GEN DME turn left until joining ARC 16 NM GEN DME.
Crossing RDL 127 GEN VOR turn right to intercept and follow RDL 138 GEN VOR bound to VARAP.

MEL/MEA: PIKOT – INT ARC 16 NM GEN DME/RDL 100 GEN VOR: FL 100;
INT ARC 16 NM GEN DME/RDL 100 GEN VOR– INT ARC 16 NM GEN DME/RDL 110 GEN VOR: 6500 FT;
INT ARC 16 NM GEN DME/RDL 110 GEN VOR - VARAP: 5000 FT

PIKOT 3H

PIKOT – TR 209° (RDL 029 GEN VOR) – GEN VOR, then turn left and proceed on TR 138° (RDL 138 GEN VOR) bound to VARAP.

MEA: PIKOT – GEN VOR: FL 100;
GEN VOR– VARAP: 5000 FT

TESTO 3G

TESTO – TR 117° (RDL 297 GEN VOR) – GEN VOR, then proceed on TR 138° (RDL 138 GEN VOR) bound to VARAP.

MEL/MEA: TESTO – GEN VOR: FL 90;
GEN VOR– VARAP: 5000 FT

UNITA 4G

UNITA - TR 002° (RDL 182 GEN VOR). At 24 NM GEN DME turn right to intercept and follow ARC 21 NM GEN DME.
Crossing RDL 147 GEN VOR turn left to intercept and follow RDL 138 GEN VOR bound to VARAP.

MEA: UNITA – RDL /24 NM GEN VOR/DME: 7000 FT,
RDL182/24 NM GEN VOR/DME – VARAP: 5000 FT

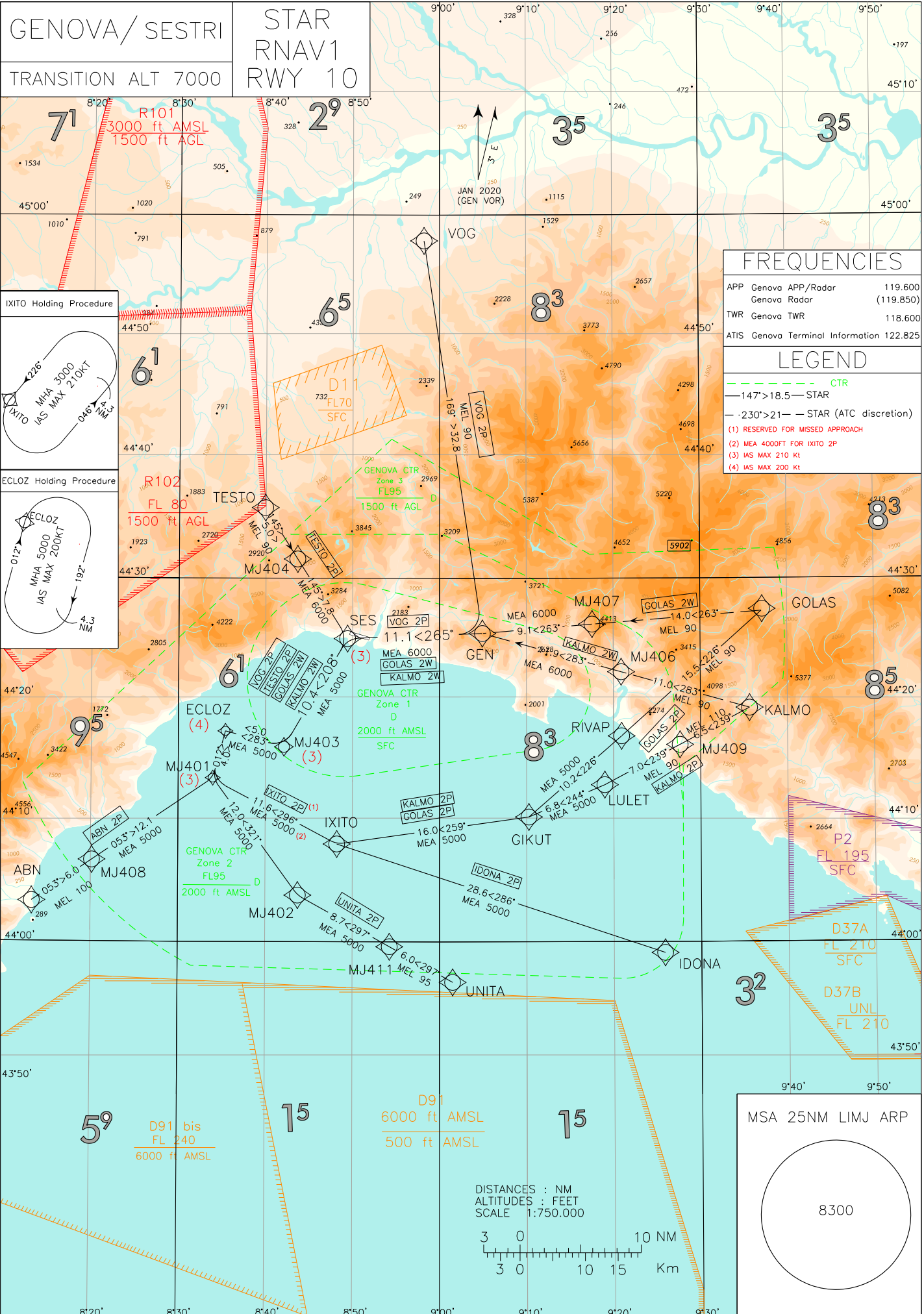
VOG 3G

VOG VOR/– TR 169° (RDL 169 VOG VOR) – GEN VOR, then turn left and proceed on TR 138° (RDL 138 GEN VOR) bound to VARAP.

MEL/MEA: VOG VOR– GEN VOR: FL 90;
GEN VOR– VARAP: 5000 FT

DOC 8168 ED. 5 - 2006 - AMDT 8

CHANGE: ATS GEOGRAPHY UPDATED



STAR RNAV1 RWY10

ABN 2P

Path Terminator	Waypoint Identifier	Fly Over	Course °M (°T)	Magnetic Variation	Distance (NM)	Turn Direction	Altitude (Ft)	Speed Limit (Kt)	Navigation Specification
IF	ABN	-	-	-	-	-	+FL110	-	RNAV1
TF	MJ408	-	053° (055.8°)	-	6.0	-	+FL100	-	RNAV1
TF	MJ401	-	053° (055.8°)	-	12.1	-	+5000	210	RNAV1
TF	ECLOZ	-	012° (014.0°)	-	4.0	-	+5000	200	RNAV1

GOLAS 2P

Path Terminator	Waypoint Identifier	Fly Over	Course °M (°T)	Magnetic Variation	Distance (NM)	Turn Direction	Altitude (Ft)	Speed Limit (Kt)	Navigation Specification
IF	GOLAS	-	-	-	-	-	+FL110	-	RNAV1
TF	RIVAP	-	226° (228.2°)	-	15.5	-	+FL90	-	RNAV1
TF	GIKUT	-	226° (228.9°)	-	10.2	-	+5000	-	RNAV1
TF	IXITO	-	259° (261.9°)	-	16.0	-	+5000	-	RNAV1
TF	MJ401	-	296° (297.9°)	-	11.6	-	+5000	210	RNAV1
TF	ECLOZ	-	012° (015.0°)	-	4.0	-	+5000	200	RNAV1

IDONA 2P

Path Terminator	Waypoint Identifier	Fly Over	Course °M (°T)	Magnetic Variation	Distance (NM)	Turn Direction	Altitude (Ft)	Speed Limit (Kt)	Navigation Specification
IF	IDONA	-	-	-	-	-	+FL110	-	RNAV1
TF	IXITO	-	286° (288.1°)	-	28.6	-	+5000	-	RNAV1
TF	MJ401	-	296° (297.9°)	-	11.6	-	+5000	210	RNAV1
TF	ECLOZ	-	012° (015.0°)	-	4.0	-	+5000	200	RNAV1

KALMO 2P

Path Terminator	Waypoint Identifier	Fly Over	Course °M (°T)	Magnetic Variation	Distance (NM)	Turn Direction	Altitude (Ft)	Speed Limit (Kt)	Navigation Specification
IF	KALMO	-	-	-	-	-	+FL110	-	RNAV1
TF	MJ409	-	239° (242.0°)	-	6.5	-	+FL110	-	RNAV1
TF	LULET	-	239° (242.0°)	-	7.0	-	+FL90	-	RNAV1
TF	GIKUT	-	244° (247.0°)	-	6.8	-	+5000	-	RNAV1
TF	IXITO	-	259° (261.9°)	-	16.0	-	+5000	-	RNAV1
TF	MJ401	-	296° (297.9°)	-	11.6	-	+5000	210	RNAV1
TF	ECLOZ	-	012° (015.0°)	-	4.0	-	+5000	200	RNAV1

UNITA 2P

Path Terminator	Waypoint Identifier	Fly Over	Course °M (°T)	Magnetic Variation	Distance (NM)	Turn Direction	Altitude (Ft)	Speed Limit (Kt)	Navigation Specification
IF	UNITA	-	-	-	-	-	+FL110	-	RNAV1
TF	MJ411	-	297° (299.2°)	-	6.0	-	+FL95	-	RNAV1
TF	MJ402	-	297° (299.2°)	-	8.7	-	+5000	-	RNAV1
TF	MJ401	-	321° (323.9°)	-	12.0	-	+5000	210	RNAV1
TF	ECLOZ	-	012° (015.0°)	-	4.0	-	+5000	200	RNAV1

VOG 2P

Path Terminator	Waypoint Identifier	Fly Over	Course °M (°T)	Magnetic Variation	Distance (NM)	Turn Direction	Altitude (Ft)	Speed Limit (Kt)	Navigation Specification
IF	VOG	-	-	-	-	-	+FL110	-	RNAV1
TF	GEN	-	169° (171.6°)	-	32.8	-	+FL90	-	RNAV1
TF	SES	-	265° (267.7°)	-	11.1	R	+6000	210	RNAV1
TF	MJ403	-	208° (210.3°)	-	10.4	-	+5000	210	RNAV1
TF	ECLOZ	-	283° (285°)	-	5.0	-	+5000	200	RNAV1

TESTO 2P

Path Terminator	Waypoint Identifier	Fly Over	Course °M (°T)	Magnetic Variation	Distance (NM)	Turn Direction	Altitude (Ft)	Speed Limit (Kt)	Navigation Specification
IF	TESTO	-	-	-	-	-	-	-	RNAV1
TF	MJ404	-	145° (147.8°)	-	5.0	-	+FL90	-	RNAV1
TF	SES	-	145° (147.8°)	-	7.8	-	+6000	210	RNAV1
TF	MJ403	-	208° (210.3°)	-	10.4	-	+5000	210	RNAV1
TF	ECLOZ	-	283° (285°)	-	5.0	-	+5000	200	RNAV1

IXITO 2P (RESERVED FOR MISSED APPROACH)

Path Terminator	Waypoint Identifier	Fly Over	Course °M (°T)	Magnetic Variation	Distance (NM)	Turn Direction	Altitude (Ft)	Speed Limit (Kt)	Navigation Specification
IF	IXITO	-	-	-	-	-	+4000	-	RNAV1
TF	MJ401	-	296° (297.9°)	-	11.6	-	+4000	210	RNAV1
TF	ECLOZ	-	012° (015.0°)	-	4.0	-	+4000	200	RNAV1

KALMO 2W (ATC DISCRETION)

Path Terminator	Waypoint Identifier	Fly Over	Course °M (°T)	Magnetic Variation	Distance (NM)	Turn Direction	Altitude (Ft)	Speed Limit (Kt)	Navigation Specification
IF	KALMO	-	-	-	-	-	+FL110	-	RNAV1
TF	MJ406	-	283° (285.7°)	-	11.0	-	+FL90	-	RNAV1
TF	GEN	-	283° (285.5°)	-	11.9	-	+6000	-	RNAV1
TF	SES	-	265° (267.7°)	-	11.1	-	+6000	210	RNAV1
TF	MJ403	-	208° (210.3°)	-	10.4	-	+5000	210	RNAV1
TF	ECLOZ	-	283° (285°)	-	5.0	-	+5000	200	RNAV1

GOLAS 2W (ATC DISCRETION)

Path Terminator	Waypoint Identifier	Fly Over	Course °M (°T)	Magnetic Variation	Distance (NM)	Turn Direction	Altitude (Ft)	Speed Limit (Kt)	Navigation Specification
IF	GOLAS	-	-	-	-	-	+FL110	-	RNAV1
TF	MJ407	-	263° (265.5°)	-	14.0	-	+FL90	-	RNAV1
TF	GEN	-	263° (265.2°)	-	9.1	-	+6000	-	RNAV1
TF	SES	-	265° (267.7°)	-	11.1	-	+6000	210	RNAV1
TF	MJ403	-	208° (210.3°)	-	10.4	-	+5000	210	RNAV1
TF	ECLOZ	-	283° (285°)	-	5.0	-	+5000	200	RNAV1

Path Terminator	Waypoint Identifier	Inbound Course °M (°T)	Waypoint Distance (NM)	Turn Direction	Minimum Altitude (FT)	Maximum Altitude (FL)	Speed Limit (kt)	Magnetic Variation (°)	Navigation Specification
HM	ECLOZ	012° (015.0)	4.3	R	5000	-	200	+3.0	RNAV1
HM	IXITO	226° (229°)	4.3	L	3000	-	210	+3.0	RNAV1

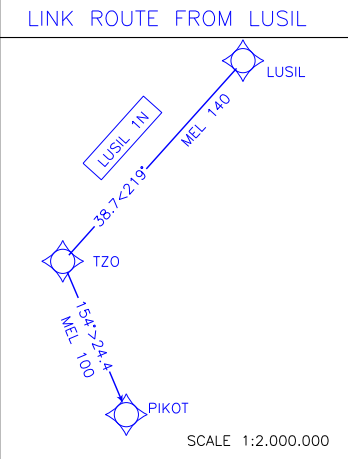
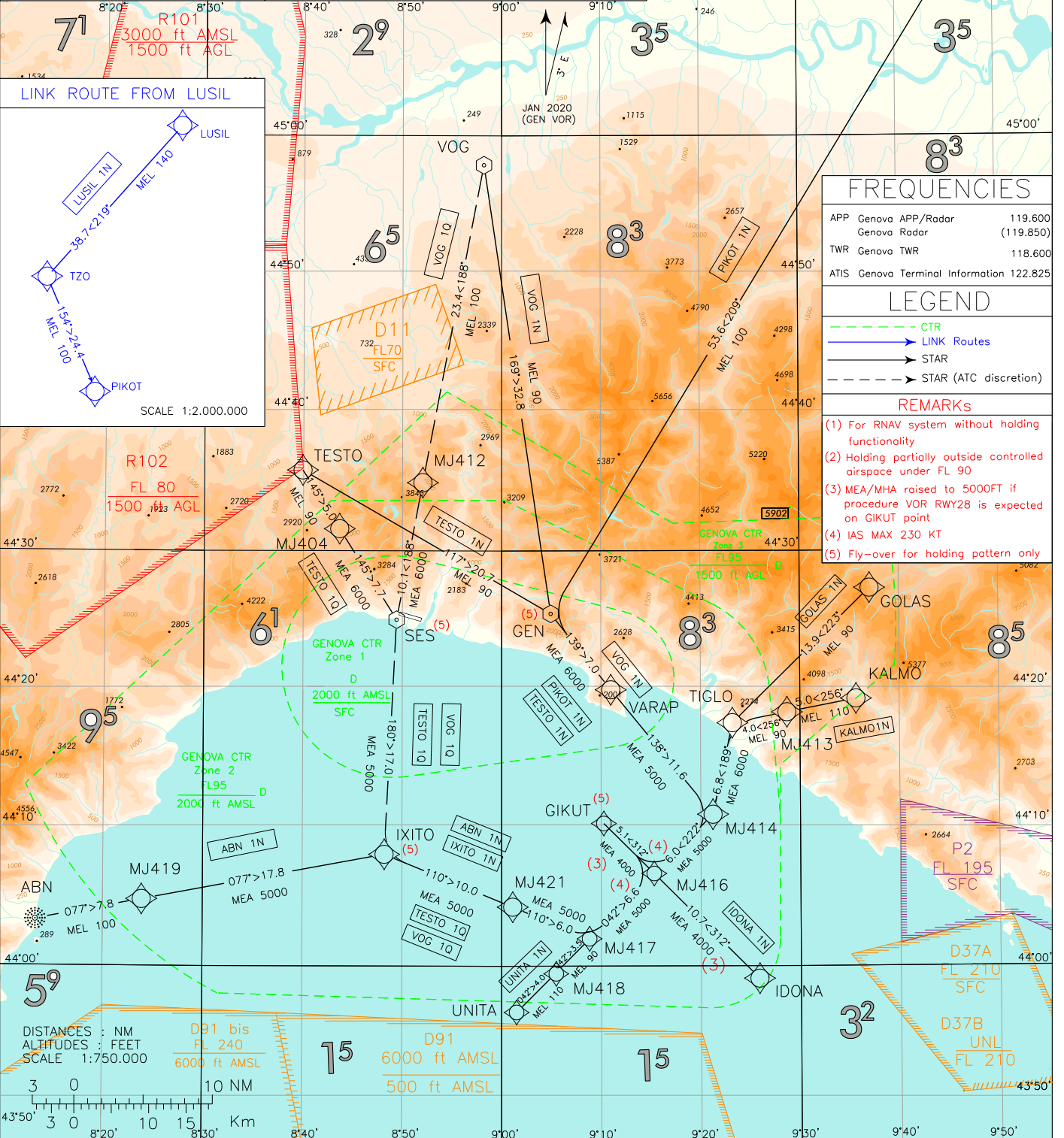
WAYPOINT LIST

Waypoint Identifier	Coordinates
MJ401	44°13'31.6"N 008°33'58.3"E
MJ402	44°03'51.4"N 008°43'43.6"E
MJ403	44°16'05.6"N 008°42'07.9"E
MJ404	44°31'36.1"N 008°43'39.6"E
MJ406	44°22'16.9"N 009°20'53.7"E
MJ407	44°26'13.3"N 009°17'33.9"E
MJ408	44°06'44.7"N 008°20'07.8"E
MJ409	44°16'15.9"N 009°27'38.7"E
MJ411	43°59'36.4"N 008°54'15.4"E

Intenzionalmente bianca

Intentionally left blank

GENOVA/ SESTRI
 TRANSITION ALT 7000
 LINK ROUTES & STAR RNAV1 RWY 28



FREQUENCIES		
APP Genova APP/Radar		119.600
Genova Radar		(119.850)
TWR Genova TWR		118.600
ATIS Genova Terminal Information		122.825

LEGEND	
	CTR
	LINK Routes
	STAR
	STAR (ATC discretion)

REMARKS	
(1)	For RNAV system without holding functionality
(2)	Holding partially outside controlled airspace under FL 90
(3)	MEA/MHA raised to 5000FT if procedure VOR RWY28 is expected on GIKUT point
(4)	IAS MAX 230 KT
(5)	Fly-over for holding pattern only

GIKUT HOLDING Pattern	SES HOLDING Pattern (2)	GEN HOLDING Pattern	IXITO HOLDING Pattern	MSA 25NM LIMJ ARP

GENOVA SESTRI**LINK ROUTE RNAV 1****LUSIL 1N**

Path Terminator	Waypoint Identifier	Fly Over	Course °M (°T)	Magnetic Variation	Distance (NM)	Turn Direction	Altitude (Ft)	Speed Limit (Kt)	Navigation Specification
IF	LUSIL	-	-	-	-	-	-	-	RNAV1
TF	TZO	-	219° (221.6°)	-	38.7	-	+FL140	-	RNAV1
TF	PIKOT	-	154° (156.4°)	-	24.4	-	+FL100	-	RNAV1

STAR RNAV1 RWY28**ABN 1N**

Path Terminator	Waypoint Identifier	Fly Over	Course °M (°T)	Magnetic Variation	Distance (NM)	Turn Direction	Altitude (Ft)	Speed Limit (Kt)	Navigation Specification
IF	ABN	-	-	-	-	-	+FL110	-	RNAV1
TF	MJ419	-	077° (079.2°)	-	7.8	-	+FL100	-	RNAV1
TF	IXITO	-	077° (079.3°)	-	17.8	-	+5000	-	RNAV1
TF	MJ421	-	110° (112.5°)	-	10.0	-	+5000	-	RNAV1
TF	MJ417	-	110° (112.4°)	-	6.0	-	+5000	-	RNAV1
TF	MJ416	-	042° (044.9°)	-	6.6	-	+5000	-230	RNAV1
TF	GIKUT	-	312° (314.9°)	-	5.1	L	+4000 (3)	-	RNAV1

GOLAS 1N

Path Terminator	Waypoint Identifier	Fly Over	Course °M (°T)	Magnetic Variation	Distance (NM)	Turn Direction	Altitude (Ft)	Speed Limit (Kt)	Navigation Specification
IF	GOLAS	-	-	-	-	-	+FL110	-	RNAV1
TF	TIGLO	-	223° (225.7°)	-	13.9	-	+FL90	-	RNAV1
TF	MJ414	-	189° (192.1°)	-	6.8	-	+6000	-	RNAV1
TF	MJ416	-	222° (225.0°)	-	6.0	-	+5000	-230	RNAV1
TF	GIKUT	-	312° (314.9°)	-	5.1	R	+4000 (3)	-	RNAV1

IDONA 1N

Path Terminator	Waypoint Identifier	Fly Over	Course °M (°T)	Magnetic Variation	Distance (NM)	Turn Direction	Altitude (Ft)	Speed Limit (Kt)	Navigation Specification
IF	IDONA	-	-	-	-	-	+FL110	-	RNAV1
TF	MJ416	-	312° (315.0°)	-	10.7	-	+4000 (3)	-	RNAV1
TF	GIKUT	-	312° (314.9°)	-	5.1	-	+4000 (3)	-	RNAV1

IXITO 1N

Path Terminator	Waypoint Identifier	Fly Over	Course °M (°T)	Magnetic Variation	Distance (NM)	Turn Direction	Altitude (Ft)	Speed Limit (Kt)	Navigation Specification
IF	IXITO	-	-	-	-	-	+5000	-	RNAV1
TF	MJ421	-	110° (112.2°)	-	10.0	-	+5000	-	RNAV1
TF	MJ417	-	110° (112.4°)	-	6.0	-	+5000	-	RNAV1
TF	MJ416	-	042° (044.9°)	-	6.6	-	+5000	-230	RNAV1
TF	GIKUT	-	312° (314.9°)	-	5.1	L	+4000 (3)	-	RNAV1

KALMO 1N

Path Terminator	Waypoint Identifier	Fly Over	Course °M (°T)	Magnetic Variation	Distance (NM)	Turn Direction	Altitude (Ft)	Speed Limit (Kt)	Navigation Specification
IF	KALMO	-	-	-	-	-	+FL110	-	RNAV1
TF	MJ413	-	256° (259.1°)	-	5.0	-	+FL110	-	RNAV1
TF	TIGLO	-	256° (259.0°)	-	4.0	-	+FL90	-	RNAV1
TF	MJ414	-	189° (192.1°)	-	6.8	-	+6000	-	RNAV1
TF	MJ416	-	222° (225.0°)	-	6.0	-	+5000	-230	RNAV1
TF	GIKUT	-	312° (314.9°)	-	5.1	R	+4000 (3)	-	RNAV1

PIKOT 1N

Path Terminator	Waypoint Identifier	Fly Over	Course °M (°T)	Magnetic Variation	Distance (NM)	Turn Direction	Altitude (Ft)	Speed Limit (Kt)	Navigation Specification
IF	PIKOT	-	-	-	-	-	+FL100	-	RNAV1
TF	GEN	-	209° (211.7°)	-	53.6	-	+FL100	-	RNAV1
TF	VARAP	-	139° (141.7°)	-	7.0	-	+6000	-	RNAV1
TF	MJ414	-	138° (140.7°)	-	11.6	-	+5000	-	RNAV1
TF	MJ416	-	222° (225.0°)	-	6.0	-	+5000	-230	RNAV1
TF	GIKUT	-	312° (314.9°)	-	5.1	R	+4000 (3)	-	RNAV1

TESTO 1N

Path Terminator	Waypoint Identifier	Fly Over	Course °M (°T)	Magnetic Variation	Distance (NM)	Turn Direction	Altitude (Ft)	Speed Limit (Kt)	Navigation Specification
IF	TESTO	-	-	-	-	-	-	-	RNAV1
TF	GEN	-	117° (119.9°)	-	20.7	-	+FL90	-	RNAV1
TF	VARAP	-	139° (141.7°)	-	7.0	-	+6000	-	RNAV1
TF	MJ414	-	138° (140.7°)	-	11.6	-	+5000	-	RNAV1
TF	MJ416	-	222° (225.0°)	-	6.0	-	+5000	-230	RNAV1
TF	GIKUT	-	312° (314.9°)	-	5.1	R	+4000 (3)	-	RNAV1

TESTO 1Q (ATC discretion)

Path Terminator	Waypoint Identifier	Fly Over	Course °M (°T)	Magnetic Variation	Distance (NM)	Turn Direction	Altitude (Ft)	Speed Limit (Kt)	Navigation Specification
IF	TESTO	-	-	-	-	-	-	-	RNAV1
TF	MJ404	-	145° (147.8°)	-	5.0	-	+FL90	-	RNAV1
TF	SES	-	145° (147.8°)	-	7.7	-	+6000	-	RNAV1
TF	IXITO	-	180° (182.9°)	-	17.0	-	+5000	-	RNAV1
TF	MJ421	-	110° (112.2°)	-	10.0	-	+5000	-	RNAV1
TF	MJ417	-	110° (112.4°)	-	6.0	-	+5000	-	RNAV1
TF	MJ416	-	042° (044.9°)	-	6.6	-	+5000	-230	RNAV1
TF	GIKUT	-	312° (314.9°)	-	5.1	L	+4000 (3)	-	RNAV1

UNITA 1N

Path Terminator	Waypoint Identifier	Fly Over	Course °M (°T)	Magnetic Variation	Distance (NM)	Turn Direction	Altitude (Ft)	Speed Limit (Kt)	Navigation Specification
IF	UNITA	-	-	-	-	-	+FL110	-	RNAV1
TF	MJ418	-	042° (44.9°)	-	4.0	-	+FL110	-	RNAV1
TF	MJ417	-	042° (44.6°)	-	3.5	-	+FL90	-	RNAV1
TF	MJ416	-	042° (044.8°)	-	6.6	-	+5000	-230	RNAV1
TF	GIKUT	-	312° (314.9°)	-	5.1	L	+4000 (3)	-	RNAV1

VOG 1N

Path Terminator	Waypoint Identifier	Fly Over	Course °M (°T)	Magnetic Variation	Distance (NM)	Turn Direction	Altitude (Ft)	Speed Limit (Kt)	Navigation Specification
IF	VOG	-	-	-	-	-	+FL110	-	RNAV1
TF	GEN	-	169° (171.5°)	-	32.8	-	+FL90	-	RNAV1
TF	VARAP	-	139° (141.7°)	-	7.0	-	+6000	-	RNAV1
TF	MJ414	-	138° (140.7°)	-	11.6	-	+5000	-	RNAV1
TF	MJ416	-	222° (225.0°)	-	6.0	-	+5000	-230	RNAV1
TF	GIKUT	-	312° (314.9°)	-	5.1	R	+4000 (3)	-	RNAV1

VOG 1Q (ATC discretion)

Path Terminator	Waypoint Identifier	Fly Over	Course °M (°T)	Magnetic Variation	Distance (NM)	Turn Direction	Altitude (Ft)	Speed Limit (Kt)	Navigation Specification
IF	VOG	-	-	-	-	-	+FL110	-	RNAV1
TF	MJ412	-	188° (190.9°)	-	23.4	-	+FL100	-	RNAV1
TF	SES	-	188° (190.8°)	-	10.1	-	+6000	-	RNAV1
TF	IXITO	-	180° (182.9°)	-	17.0	-	+5000	-	RNAV1
TF	MJ421	-	110° (112.2°)	-	10.0	-	+5000	-	RNAV1
TF	MJ417	-	110° (112.4°)	-	6.0	-	+5000	-	RNAV1
TF	MJ416	-	042° (044.9°)	-	6.6	-	+5000	-230	RNAV1
TF	GIKUT	-	312° (314.9°)	-	5.1	L	+4000 (3)	-	RNAV1

HOLDING RNAV 1

Path Terminator	Waypoint Identifier	Inbound Course °M (°T)	Timing (min./ Waypoint Distance (NM) (1)	Turn Direction	Minimum Altitude (FT)	Maximum Altitude (FL)	Speed Limit (kt)	Magnetic Variation (°)	Navigation Specification
HM	GEN	319° (322°)	1.0/-	R	+6500	-	-230	3.0	RNAV1
HM	SES (2)	180° (183°)	1.0/-	R	+6000	-	-230	3.0	RNAV1
HM	GIKUT	312° (315°)	1.0/-	R	+4000 (3)	-	-210	3.0	RNAV1
HM	IXITO	109° (112°)	1.0/-	L	+3000	-	-210	3.0	RNAV1

REMARK

- (1) Only for RNAV system without holding functionality
- (2) Holding partially outside controlled airspace under FL90
- (3) MEA/MHA raised to 5000 Ft if procedure VOR RWY 28 is expected on GIKUT point

WAYPOINT LIST

Waypoint Identifier	Coordinates
MJ404	44°31'36.10"N 008° 43' 39.60"E
MJ412	44° 34' 56.37"N 008° 52' 02.95"E
MJ413	44° 18' 20.08"N 009° 28' 41.67"E
MJ414	44° 10' 57.61"N 009° 21' 13.53"E
MJ416	44° 06' 41.54"N 009° 15' 18.66"E
MJ417	44° 01' 59.08"N 009° 08' 48.67"E
MJ418	43° 59' 29.19"N 009° 05' 23.78"E
MJ419	44° 04' 48.92"N 008° 23' 53.26"E
MJ421	44° 04' 16.38"N 009° 01' 06.99"E