

SCALE 1:250.000



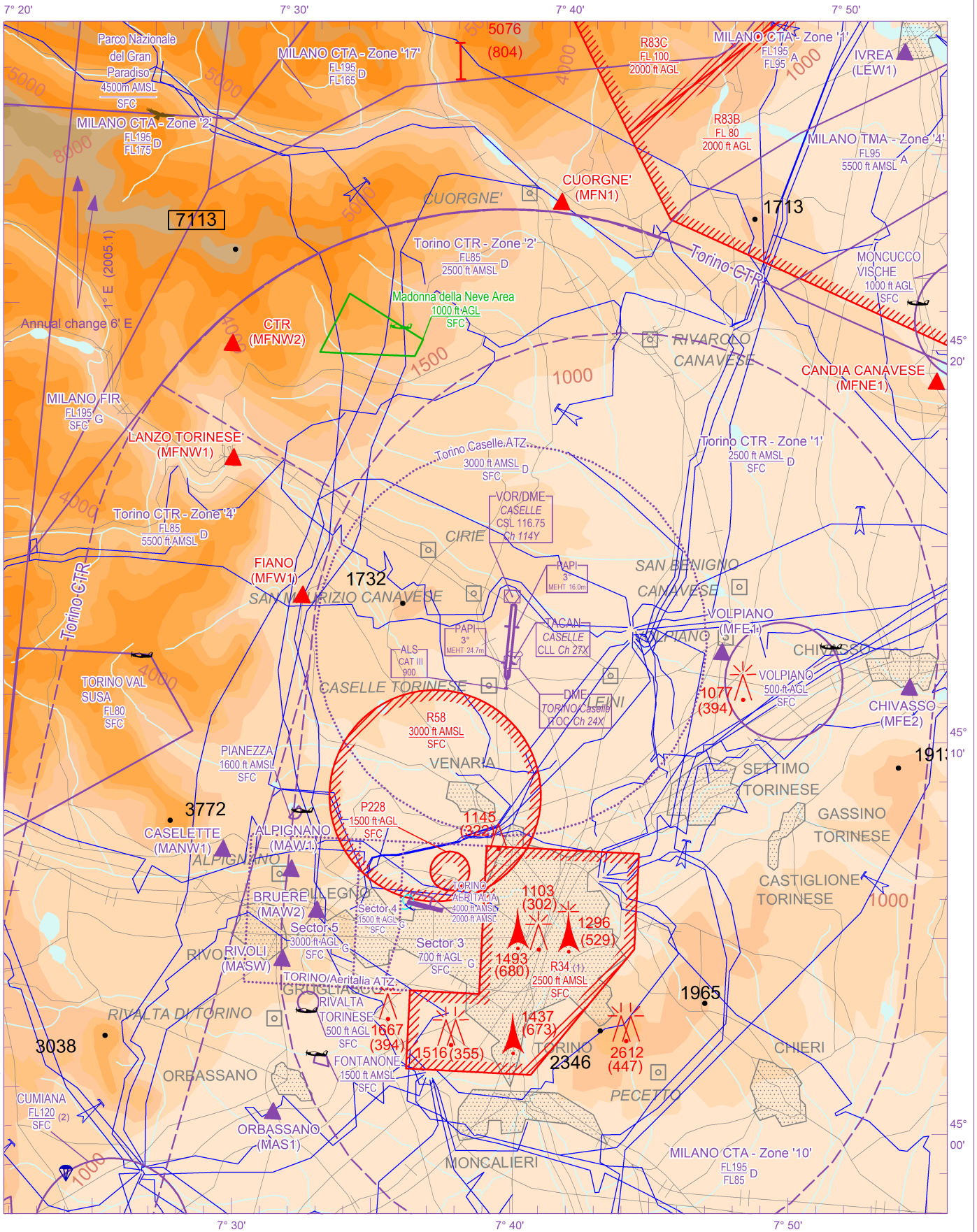
FIS Milano Information 124.925
 APP Torino APP 129.275 (121.100)
 APP Torino Radar 129.275 (121.100)
 TWR Torino TWR 118.500
 ATIS Torino Terminal Information CH 120.480

AD ELEV

989

L
I
M
F

TORINO/CASELLE



CHANGE: ATIS FREQ; 'CAS' TACAN RENAMED IN 'CLL' AND CHANNEL FREQ MODIFIED; UPDATED CHART

AIRSPACE CLASSIFICATION See AIP ENR 1.4	REMARK	WARNING
TRANSITION ALT 6000 FT	(1) 2500ft AMSL or 1500ft AGL whichever is higher (2) Upper vertical limit may be risen up to FL 150	
ELEV AND ALT IN FT IF NOT OTHERWISE INDICATED		

ICAO - INSTRUMENT APPROACH CHART

AD 2 LIMF 5-3

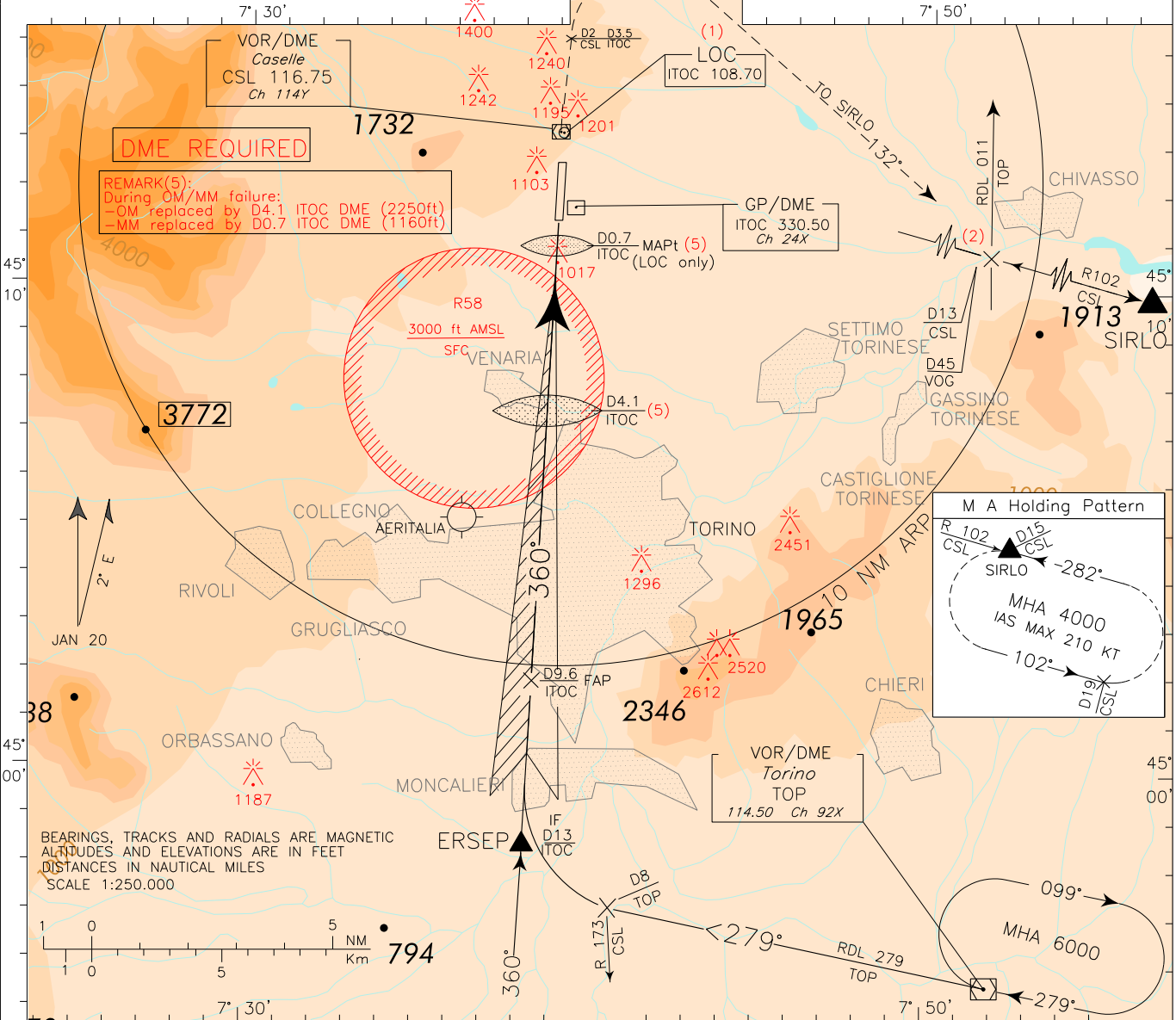
REMARK(1): Some users on ILS APCH reported false LOC captures Pilot attention is drawn to pay max caution. See also AIP ENR 1.3

APP Torino APP/Radar 129.275 (121.100) AD ELEV 989
 TWR Torino TWR 118.500
 ATIS Torino terminal CH 120.480

TORINO/CASELLE ILS CAT II or LOC-Z Rwy 36

DOC 8168 ED 6 - 2014 AMDT 8

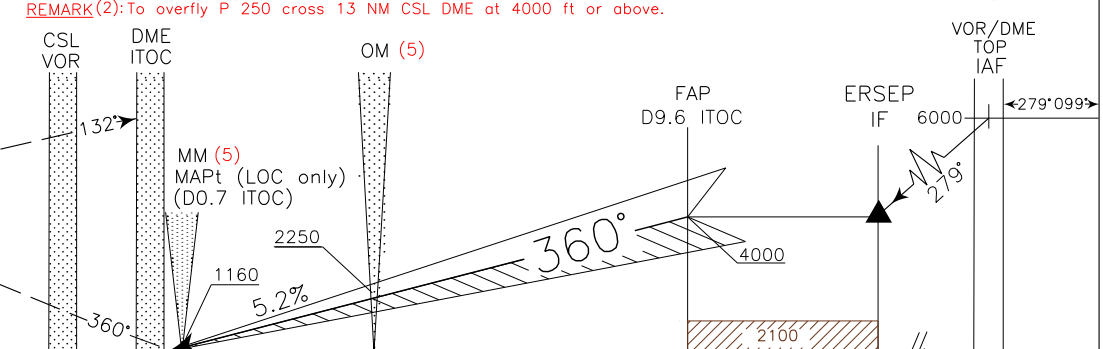
CHANGE: BOX FREQ UPDATED



TRANSITION ALT 6000

MISSED APPROACH: Continue on TR 360° climbing to 4000 ft. At 2 NM CSL DME (3.5 NM ITOC DME) at 1500 ft or above, turn right (IAS MAX 220 kt) on TR 132° to join and follow RDL 102 CSL to SIRLO M.A. Holding Pattern.

RDH 17.40 M
 GP 3°
 LOC 5.2%



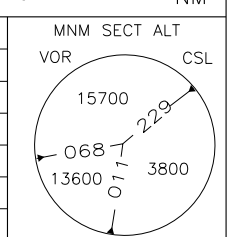
ITOC DME	D4	D3	D2	D1	D0	D1	D2	D3	D4	D5	D6	D7	D8	D9	D10	D11	D12	D13	ITOC DME
NM					0	1	2	3	4	5	6	7	8	9	10	11	12	13	NM

OCA(OCH)	A	B	C	D	
STRAIGHT IN APPROACH	ILS I	1124 (190)	1136 (202)	1144 (210)	1155 (221)
	ILS II	995 (61)	1008 (74)	1020 (86)	1040 (106)
	LOC	1310 (376)			
CIRCLING (3)	1600 (611)		1750 (761)		

(3) CIRCLING ALLOWED ONLY EAST OF RWY

(4) WARNING: TIMING NOT ALLOWED FOR LOC

GS	FT PER MIN	OM-MM (4)	MM-THR (4)
100	531	2:03	0:18
120	637	1:43	0:15
140	743	1:28	0:13
160	849	1:17	0:12
180	955	1:08	0:10



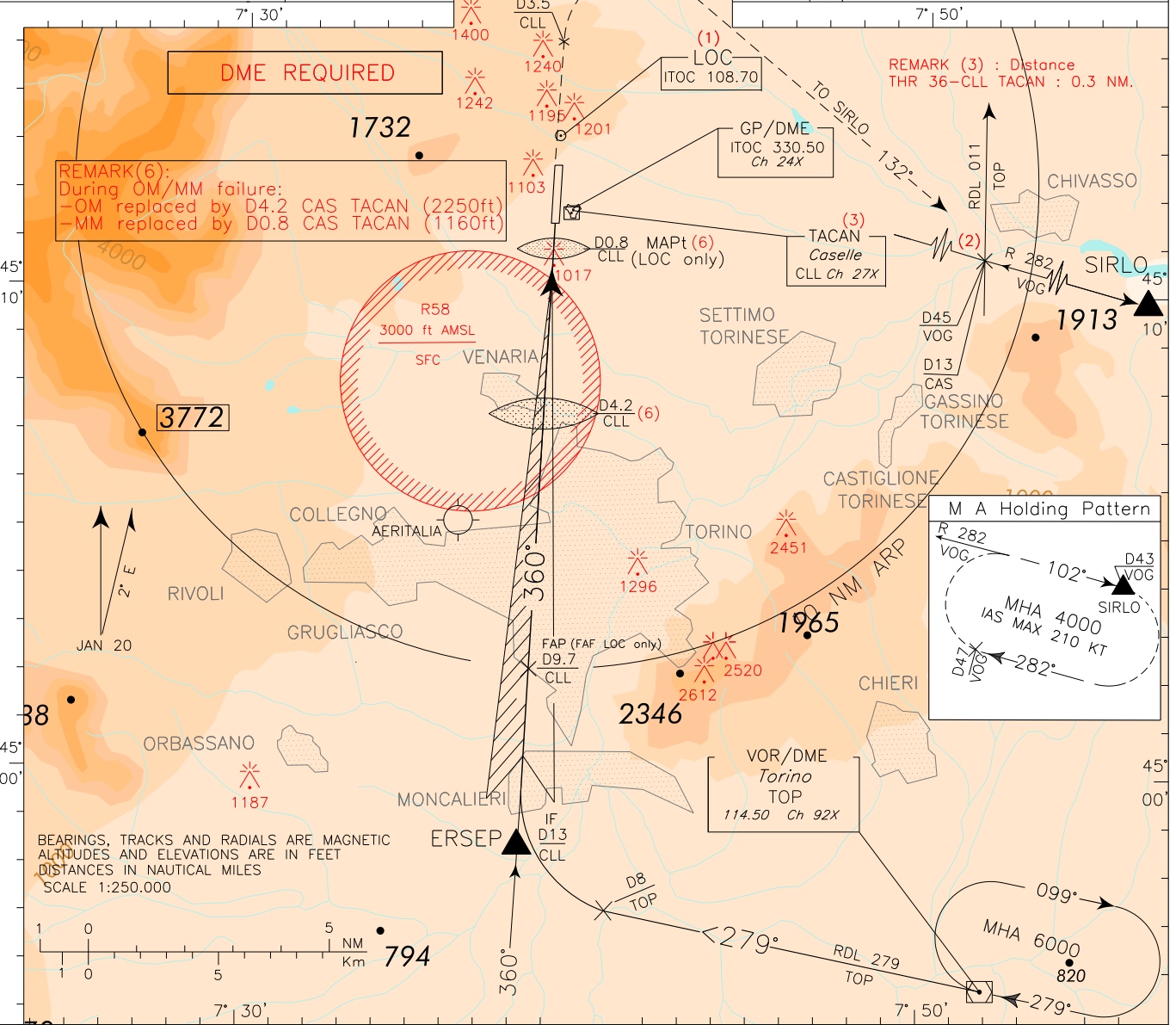
ICAO - INSTRUMENT APPROACH CHART

AD 2 LIMF 5-5

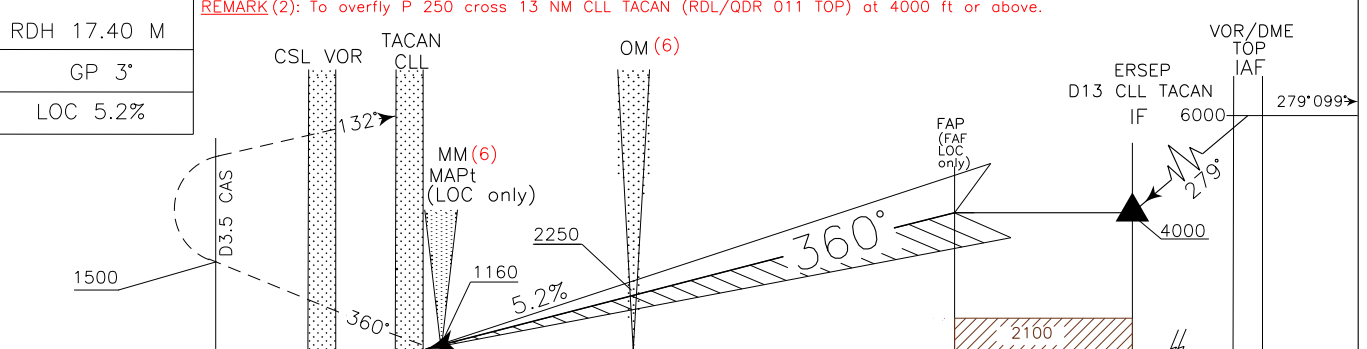
REMARK(1): Some users on ILS APCH reported false LOC captures Pilot attention is drawn to pay max caution. See also AIP ENR 1.3

APP Torino Approach 129.275 (121.100) AD ELEV 989
 TWR Torino TWR 118.500
 ATIS Torino Terminal Information CH 120.480

TORINO/CASELLE ILS CAT II or LOC-Y RWY 36



TRANSITION ALT 6000 MISSED APPROACH: Continue on TR 360° climbing to 4000 ft. At 3.5 NM CLL TACAN at 1500 ft or above, turn right (IAS MAX 220 kt) on TR 132° to join and follow RDL 282 VOG to SIRLO M.A. Holding Pattern.



CLL TACAN	D4	D3	D2	D1	D0	D1	D2	D3	D4	D5	D6	D7	D8	D9	D10	D11	D12	D13	CLL TACAN	
NM					0	1	2	3	4	5	6	7	8	9	9.4	10	11	12	13	NM

OCA(OCH)	A	B	C	D	(4) CIRCLING ALLOWED ONLY EAST OF RWY 	GS	FT PER MIN	OM-MM (5)	MM-THR (5)	MNM SECT ALT ARP	
STRAIGHT IN APPROACH	ILS I	1124 (190)	1136 (202)	1144 (210)		1155 (221)	100	531	2:03	0:18	
	ILS II	995 (61)	1008 (74)	1020 (86)		1040 (106)	120	637	1:43	0:15	
	LOC	1310 (376)				140	743	1:28	0:13		
CIRCLING (4)	1600 (611)		1750 (761)			160	849	1:17	0:12		
						180	955	1:08	0:10		

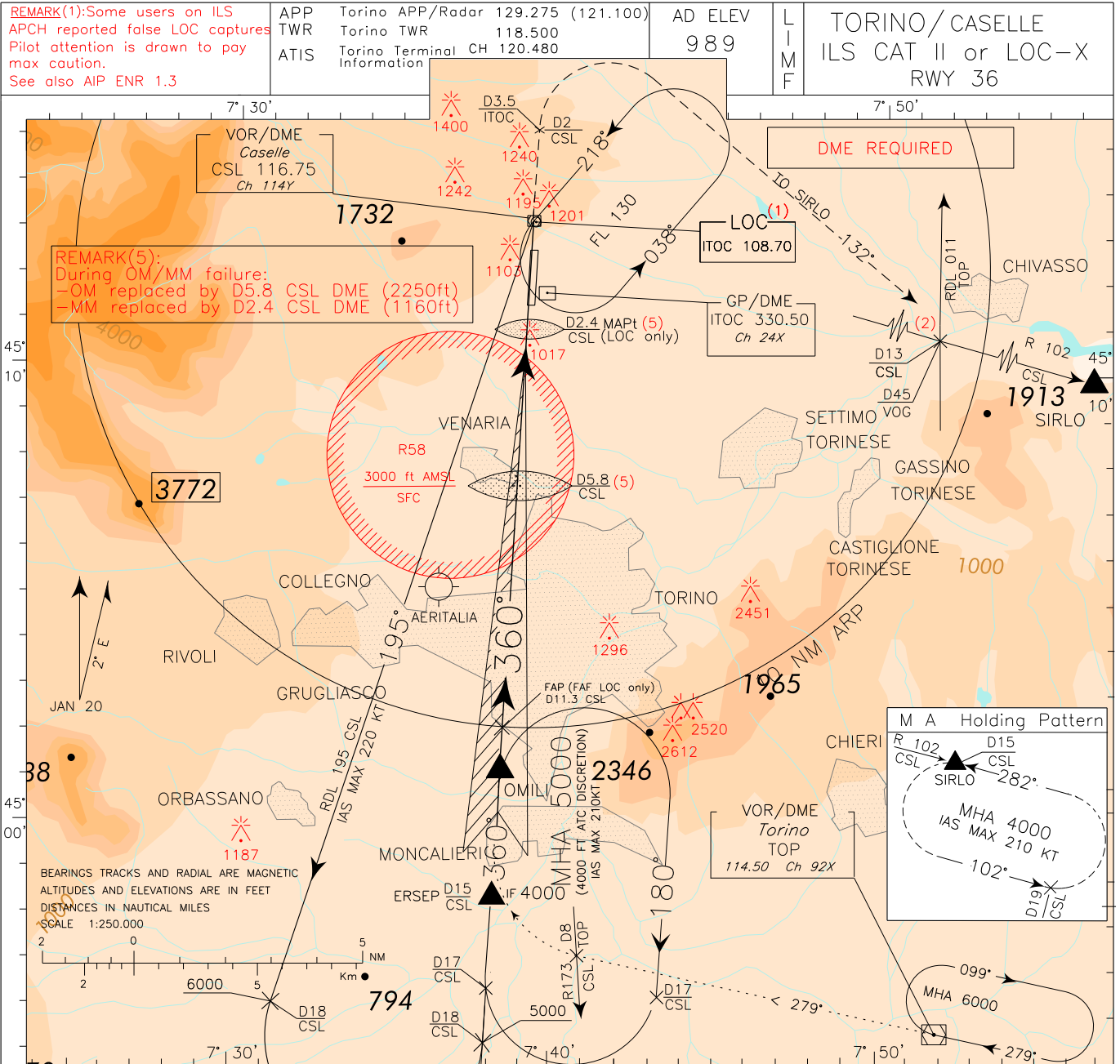
CHANGE: BOX FREQ; 'CAS' TACAN RENAMED IN CLL AND CHANNEL FREQ UPDATED

DOC 8168 ED 6 - 2014 AMDT 8

ICAO – INSTRUMENT APPROACH CHART

AD 2 LIMF 5-7

DOC 8168 ED 6 – 2014 AMDT 8
CHANGE: BOX FREQ UPDATED

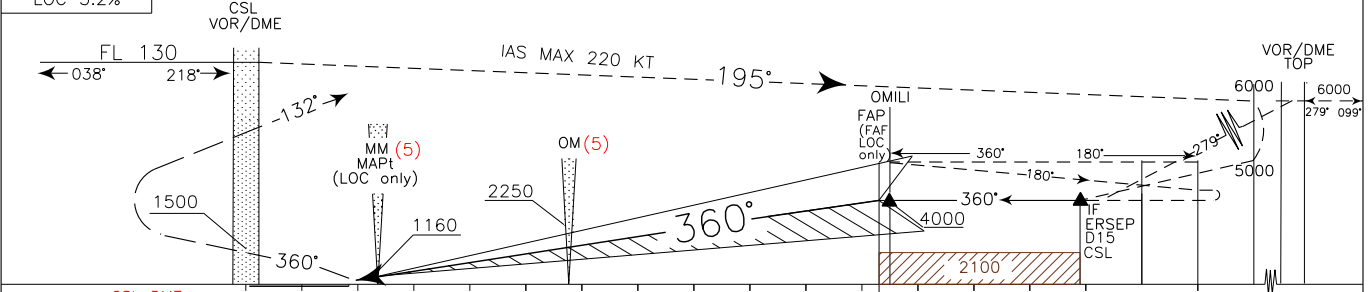


TRANSITION ALT 6000

RDH 17.40 M
GP 3'
LOC 5.2%

MISSED APPROACH: Continue on TR 360° climbing to 4000 ft. At 2 NM CSL DME (3.5 NM ITOC DME) at 1500 ft or above, turn right (IAS MAX 220 kt) on TR 132° to join and follow RDL 102 CSL to SIRLO M.A. holding pattern.

REMARK (2): To overfly P 250 cross 13 NM CSL DME at 4000 ft or above.



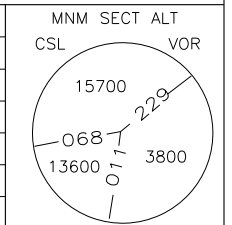
CSL DME	D0	D1	D2	D3	D4	D5	D6	D7	D8	D9	D10	D11	D12	D13	D14	D15	D16	D17	D18	CSL DME	
THR ELEV 934												11.3									
	NM	0	1	2	3	4	5	6	7	8	9	9.4	10	11	12	13	14	15	16	17	NM

OCA(OCH)	A	B	C	D
STRAIGHT IN APPROACH				
ILS I	1124 (190)	1136 (202)	1144 (210)	1155 (221)
ILS II	995 (61)	1008 (74)	1020 (86)	1040 (106)
LOC	1310 (376)			
CIRCLING (4)	1600 (611)		1750 (761)	

(4) CIRCLING ALLOWED ONLY EAST OF RWY

(3) WARNING: TIMING NOT ALLOWED FOR LOC

GS	FT PER MIN	OM-MM (3)	MM-THR (3)
100	531	3.43NM	0.52 NM
120	637	1:43	0:15
140	743	1:28	0:13
160	849	1:17	0:12
180	955	1:08	0:10



ICAO – INSTRUMENT APPROACH CHART

AD 2 LIMF 5-9

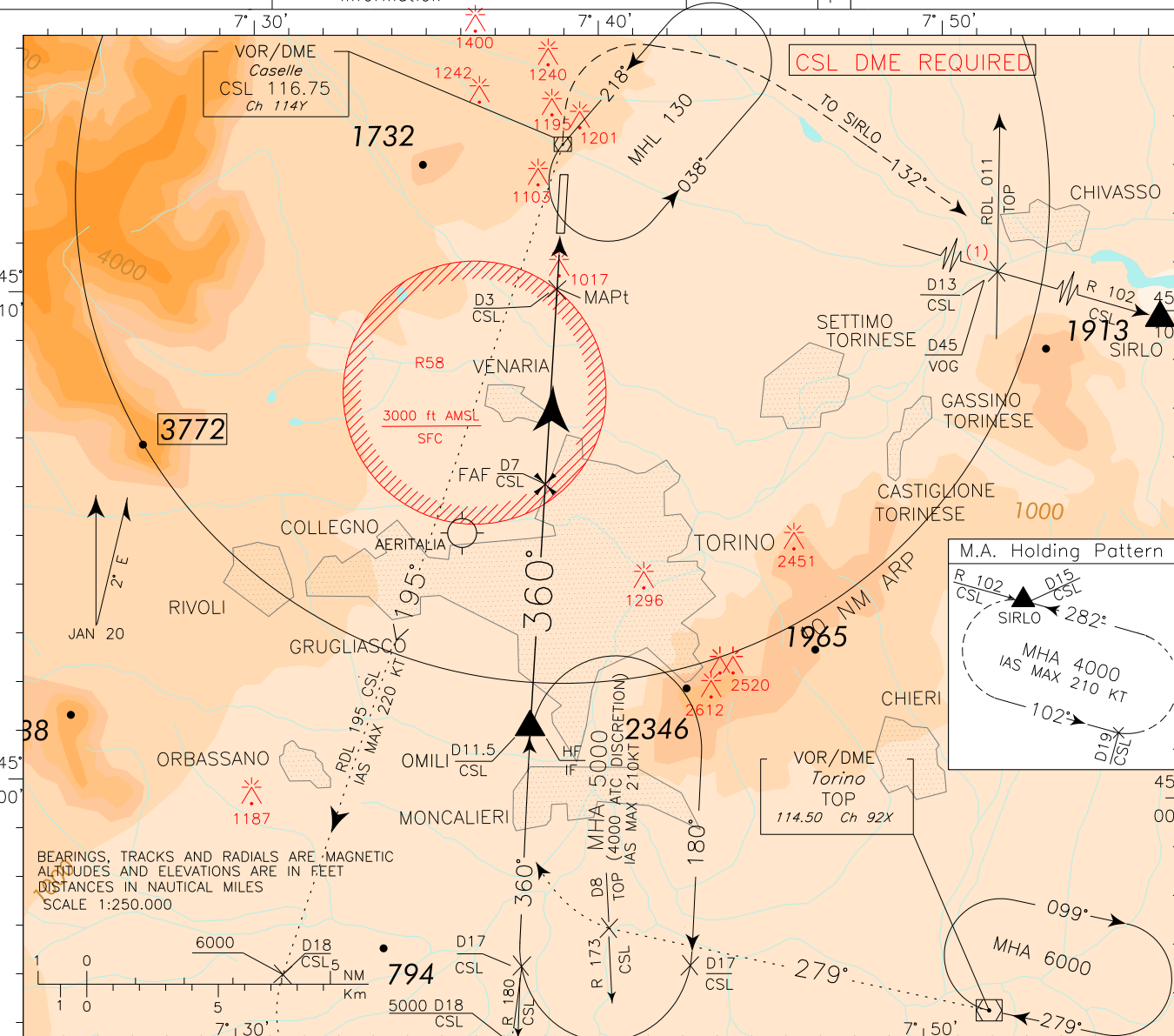
APP Torino APP/Radar 129.275 (121.100)
 TWR Torino TWR 118.500
 ATIS Torino Terminal Information CH 120.480

AD ELEV
 989

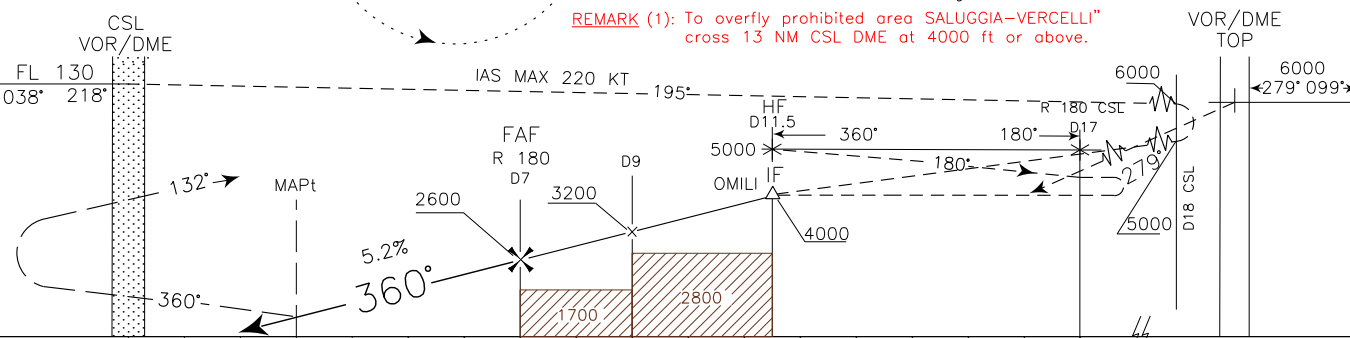
L
 I
 M
 F

TORINO/CASELLE
 VOR RWY 36

DOC 8168 ED 6 – 2014 AMDT 8
 CHANGE: BOX FREQ UPDATED

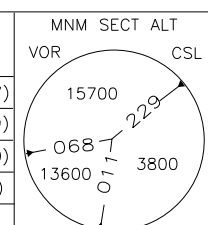


TRANSITION ALT 6000
 MISSED APPROACH: Proceed to CSL VOR climbing to 4000 ft. Over CSL VOR turn right on track 132° to join and follow RDL 102 CSL to SIRLO M.A. Holding Pattern.
 REMARK (1): To overfly prohibited area SALUGGIA-VERCELLI" cross 13 NM CSL DME at 4000 ft or above.



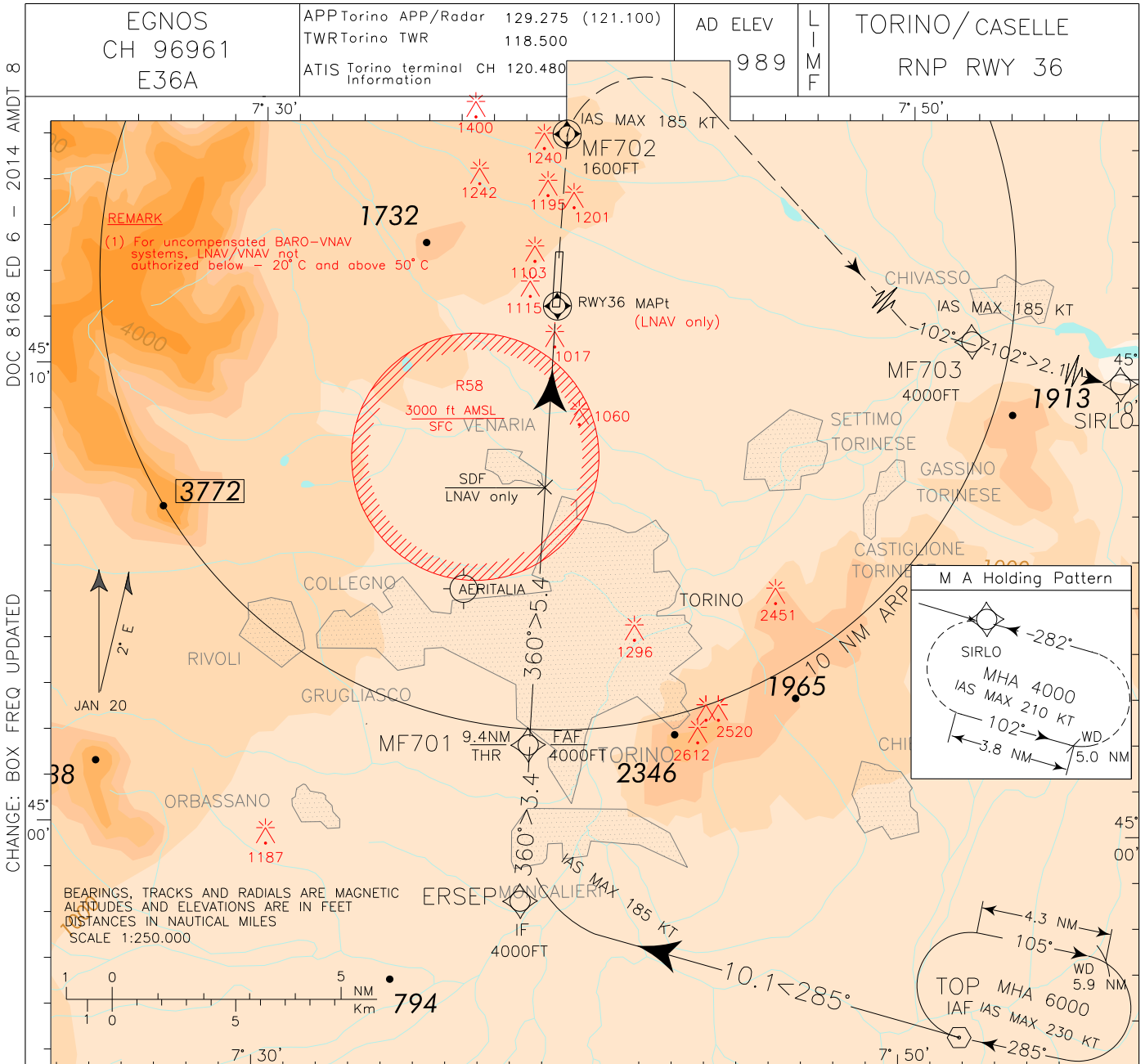
CSL DME	D0	D1	D2	D3	D4	D5	D6	D7	D8	D9	D10	D11	D12	D13	D14	D15	D16	D17	CSL DME	
	THR																			
		0	1	2	3	4	5	6	7	8	9	10	11	12	13	14	15			

OCA(OCH)		A	B	C	D	<p>*Circling allowed only EAST of RWY</p>	<table border="1"> <tr> <th>GS</th> <th>FT PER MIN</th> <th>FAF-MAP 4 NM</th> <th>DIST</th> <th>ALT (HGT)</th> </tr> <tr> <td>100</td> <td>531</td> <td>2:24</td> <td>7DME</td> <td>2600(1667)</td> </tr> <tr> <td>120</td> <td>637</td> <td>2:00</td> <td>6DME</td> <td>2282(1349)</td> </tr> <tr> <td>140</td> <td>743</td> <td>1:43</td> <td>5DME</td> <td>1963(1030)</td> </tr> <tr> <td>160</td> <td>849</td> <td>1:30</td> <td>4DME</td> <td>1645(712)</td> </tr> <tr> <td>180</td> <td>955</td> <td>1:20</td> <td></td> <td></td> </tr> </table>	GS	FT PER MIN	FAF-MAP 4 NM	DIST	ALT (HGT)	100	531	2:24	7DME	2600(1667)	120	637	2:00	6DME	2282(1349)	140	743	1:43	5DME	1963(1030)	160	849	1:30	4DME	1645(712)	180	955	1:20		
GS	FT PER MIN	FAF-MAP 4 NM	DIST	ALT (HGT)																																	
100	531	2:24	7DME	2600(1667)																																	
120	637	2:00	6DME	2282(1349)																																	
140	743	1:43	5DME	1963(1030)																																	
160	849	1:30	4DME	1645(712)																																	
180	955	1:20																																			
STRAIGHT IN APPROACH	VOR+DME RWY 36	1360 (426)																																			
CIRCLING*		1600 (611)	1750 (761)																																		

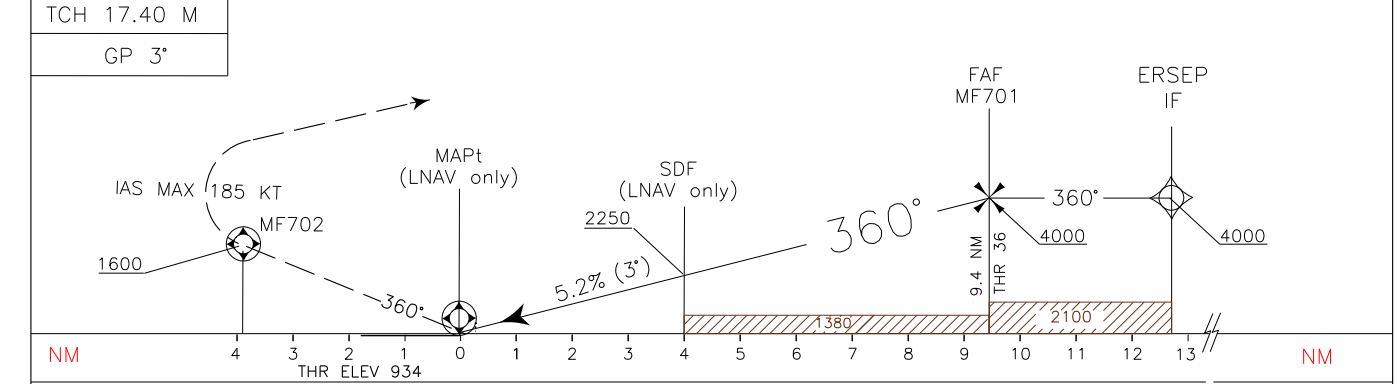


ICAO – INSTRUMENT APPROACH CHART

AD 2 LIMF 5-11



TRANSITION ALT 6000 MISSED APPROACH: Proceed on TR 360° climbing to 4000 ft. At MF702 (to be reached at 1600 ft or above), turn right (IAS MAX 185 kt) on course 102° bound to MF703 (to be reached at 4000 ft or above), then proceed direct to SIRLO M.A. Holding Pattern.



OCA(OCH)		A	B	C	D	(2) CIRCLING ALLOWED ONLY EAST OF RWY	GS	FT PER MIN	FAF-THR 9.4 NM	DIST THR36	ALT HGT	MNM SECT ALT ARP
STRAIGHT IN APPROACH	LPV	1189 (255)	1201 (267)	1209 (275)	1220 (286)			80	425	7:03	9	3841 (2907)
	LNAV/VNAV	1249 (315)	1261 (327)	1269 (335)	1280 (346)	100		531	5:34	8	3523 (2589)	
		LNAV	1370 (436)					120	637	4:42	7	3205 (2271)
	CIRCLING (2)	1600 (611)		1800 (811)		140		743	4:02	6	2887 (1953)	
						160	849	3:31	5	2569 (1635)		
						180	955	3:08	4	2251 (1317)		

DOC 8168 ED 6 – 2014 AMDT 8

CHANGE: BOX FREQ UPDATED

REMARK
(1) For uncompensated BARO-VNAV systems, LNAV/VNAV not authorized below -20°C and above 50°C

BEARINGS, TRACKS AND RADIALS ARE MAGNETIC
ALTITUDES AND ELEVATIONS ARE IN FEET
DISTANCES IN NAUTICAL MILES
SCALE 1:250,000

TABULAR DESCRIPTION Torino Caselle RNP RWY36 – Instrument Approach Procedure

Serial Number	Path Terminator	Waypoint Identifier	Fly Over	Course °M (°T)	Magnetic Variation (°)	Distance (NM)	Turn Direction	Altitude (ft)	Speed Limit (kt)	VPA/TCH	Navigation Specification
010	IF	TOP	-	-	-	-	-	+6000	-	-	RNP APCH
020	TF	ERSEP	-	285° (287.3°)	-	10.1	-	+4000	-185	-	RNP APCH
030	TF	MF701	-	360° (002.5°)	-	3.4	-	+4000	-	-	RNP APCH
030	TF	RWY36	Y	360° (002.6°)	-	9.4	-	@990	-185	-3°/17.4M	RNP APCH
040	CF	MF702	Y	360° (002.6°)	2	3.8	-	+1600	-185	-	RNP APCH
050	CF	MF703	-	102° (104.8°)	2	-	R	+4000	-185	-	RNP APCH
060	TF	SIRLO	-	102° (104.8°)	-	2.1	-	+4000	-210	-	RNP APCH
070	HM	SIRLO	Y	282° (284.8°)	2	-	L	+4000		-	RNAV1

Path Terminator	Waypoint Identifier	Inbound Course °M (°T)	Leg Distance (NM) (1)	Timing(min.)/ Waypoint Distance (NM) (2)	Turn Direction	Minimum Altitude (FT)	Maximum Altitude (FL)	Speed Limit (kt)	Magnetic Variation (°)	Navigation Specification
HM	TOP	285° (287.6°)	4.3	-/5.9	R	+6000	-	-230	2	RNAV 1
HM	SIRLO	282° (284.8°)	3.8	-/5.0	L	+4000	-	-210	2	RNAV 1

(1) RNAV system with holding functionality

(2) RNAV system without holding functionality

WAYPOINT LIST RNP RWY36

Waypoint Identifier	Coordinates
MF701	45°01'54.35" N 07°38'20.17" E
MF702	45°15'10.79" N 07°39'10.61" E
MF703	45°09'48.60" N 07°56'42.98" E

SBAS FAS DATA BLOCK LIMF RNP RWY36

INPUT DATA	
PARAMETERS	VALUES
Operation Type	0
SBAS Provider	1
Airport Identifier	LIMF
Runway	36
Runway Direction	0
Approach Performance Designator	0
Route Indicator	
Reference Path Data Selector	0
Reference Path Identifier	E36A
LTP/FTP Latitude	451120.6595N
LTP/FTP Longitude	0073855.9945E
LTP/FTP Ellipsoidal Height (metres)	334.5
FPAP Latitude	451300.7415N
Delta FPAP Latitude (seconds)	100.0820
FPAP Longitude	0073902.3455E
Delta FPAP Longitude (seconds)	6.3510
Threshold Crossing Height	17.40
TCH Units Selector	1
Glidepath Angle (degrees)	3.00
Course Width (metres)	105.00
Length Offset (metres)	144
HAL	40
VAL	35

OUTPUT DATA	
Data Block	10 06 0D 09 0C 24 00 00 01 36 33 05 A7 9E 64 13 F5 54 48 03 11 21 E4 0D 03 9E 31 00 5C 81 2C 01 64 12 C8 AF F2 43 4C 78
Calculated CRC Value	F2434C78

REQUIRED ADDITIONAL DATA (NOT CRC WRAPPED)	
ICAO Code	LI
LTP/FTP Orthometric Height (metres)	284.5

Intenzionalmente bianca

Intentionally left blank