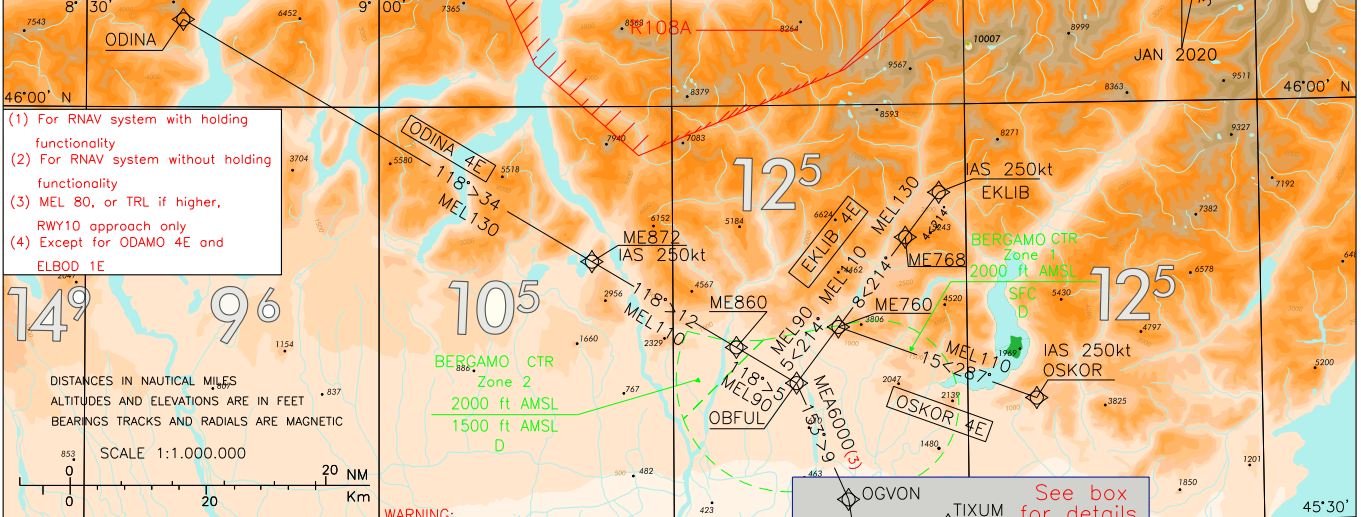


LEGEND		FREQUENCIES		STAR RNAV1/RNP1	BERGAMO/ ORIO AL SERIO
STAR	APP Milano Radar 126.750 (126.300)	TWR Orio TWR 125.875 (CH 134.105)	ATIS Bergamo ATIS 118.540 Information		
— 090° > 25 —					
STAR ATC DISCRETION					
— 048° > 16 —					

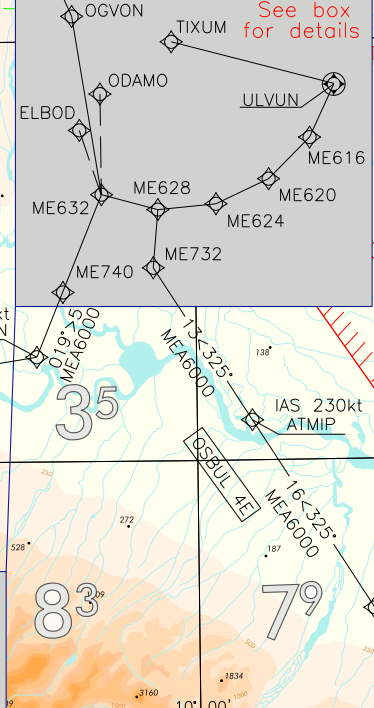
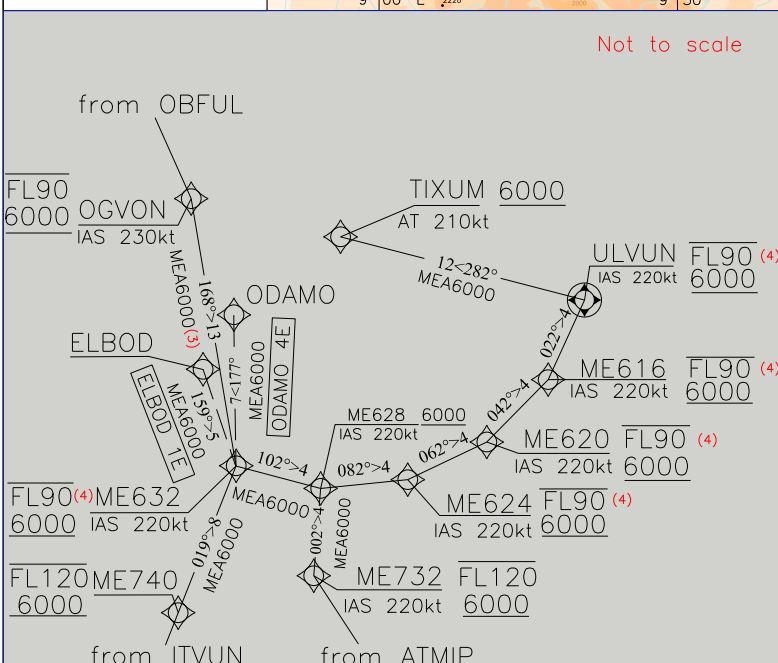
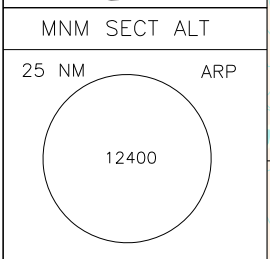
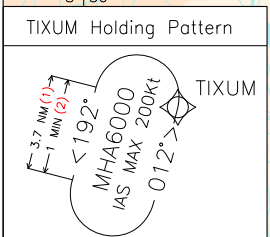
IN CASE OF RADIO FAILURE:
 TRY TO ESTABLISH CONTACT ON ALTERNATIVE FREQUENCIES:
 APP: 126.300MHZ 126.750MHZ EMERGENCY: 121.500MHZ, TWR: 125.875MHZ
 IF STILL UNABLE TO ESTABLISH CONTACT:
 - SQUAWK A7600
 - APPROACH CLEARANCE ALREADY RECEIVED: CONTINUE APPROACH ACCORDINGLY
 - APPROACH CLEARANCE NOT RECEIVED: MAINTAIN ASSIGNED LEVEL AND PROCEED ALONG ASSIGNED STAR, OR EXPECTED STAR IF NOT ASSIGNED, UNTIL TIXUM, AT TIXUM DESCEND TO MHA AND START APPROACH FOR RWY10/28
 REMARK: IF EAT HAS BEEN ISSUED, APPROACH SHALL START AT EAT.



- (1) For RNAV system with holding functionality
- (2) For RNAV system without holding functionality
- (3) MEL 80, or TRL if higher, RWY10 approach only
- (4) Except for ODAMO 4E and ELBOD 1E

DISTANCES IN NAUTICAL MILES
 ALTITUDES AND ELEVATIONS ARE IN FEET
 BEARINGS TRACKS AND RADIALS ARE MAGNETIC
 SCALE 1:1.000.000

WARNING:
 For more chart readability only areas with upper vertical limit higher than 4500 ft AMSL are depicted.
 For further details see: VFR Area Chart, Visual Approach and Instrument Approach Chart



OGVON Holding Pattern	ITVUN Holding Pattern
ULVUN Holding Pattern	ATMIP Holding Pattern

CHANGE: ATIS FREQUENCY UPDATED

STAR RNAV Bergamo / Orio al Serio**DIXER 4E**

Path Terminator	Waypoint Identifier	Fly Over	Course °M(°T)	Magnetic Variation	Distance (NM)	Turn Direction	Altitude (ft)	Speed Limit (kt)	Navigation Specification
IF	DIXER	-	-	-	-	-	-	250	RNAV1/RNP1(1)
TF	ITVUN	-	078 (080.8)	-	17.8	-	+6000	230	RNAV1/RNP1(1)
TF	ME740	-	019 (022.2)	-	5.0	-	-FL120 +6000	-	RNAV1/RNP1(1)
TF	ME632	-	019 (022.1)	-	7.5	-	-FL90 +6000	220	RNAV1/RNP1(1)
TF	ME628	-	102 (105.4)	-	4.2	-	+6000	220	RNAV1/RNP1(1)
TF	ME624	-	082 (084.9)	-	4.2	-	-FL90 +6000	220	RNAV1/RNP1(1)
TF	ME620	-	062 (065.3)	-	4.2	-	-FL90 +6000	220	RNAV1/RNP1(1)
TF	ME616	-	042 (045.3)	-	4.2	-	-FL90 +6000	220	RNAV1/RNP1(1)
TF	ULVUN	Y	022 (025.4)	-	4.2	-	-FL90 +6000	220	RNAV1/RNP1(1)
TF	TIXUM	-	282 (285.4)	-	12.0	L	+6000	AT 210	RNAV1/RNP1(1)

(1) For "monitoring and alerting" reasons, RNP1 specification is required in case of radar service unavailability or degradation

EKLIB 4E

Path Terminator	Waypoint Identifier	Fly Over	Course °M(°T)	Magnetic Variation	Distance (NM)	Turn Direction	Altitude (ft)	Speed Limit (kt)	Navigation Specification
IF	EKLIB	-	-	-	-	-	-	250	RNAV1/RNP1(1)
TF	ME768	-	214 (217.4)	-	4.0	-	+FL130	-	RNAV1/RNP1(1)
TF	ME760	-	214 (217.3)	-	8.0	-	+FL110	-	RNAV1/RNP1(1)
TF	OBFUL	-	214 (217.2)	-	5.0	-	+FL90	-	RNAV1/RNP1(1)
TF	OGVON	-	153 (156.4)	-	9.1	-	-FL90 +6000 (2)	230	RNAV1/RNP1(1)
TF	ME632	-	168 (171.1)	-	12.9	-	-FL90 +6000 (2)	220	RNAV1/RNP1(1)
TF	ME628	-	102 (105.4)	-	4.2	-	+6000	220	RNAV1/RNP1(1)
TF	ME624	-	082 (084.9)	-	4.2	-	-FL90 +6000	220	RNAV1/RNP1(1)
TF	ME620	-	062 (065.3)	-	4.2	-	-FL90 +6000	220	RNAV1/RNP1(1)
TF	ME616	-	042 (045.3)	-	4.2	-	-FL90 +6000	220	RNAV1/RNP1(1)
TF	ULVUN	Y	022 (025.4)	-	4.2	-	-FL90 +6000	220	RNAV1/RNP1(1)
TF	TIXUM	-	282 (285.4)	-	12.0	L	+6000	AT 210	RNAV1/RNP1(1)

- (1) For "monitoring and alerting" reasons, RNP1 specification is required in case of radar service unavailability or degradation
(2) MEL80, or TRL if higher for RWY10 approach only

ELBOD 1E (ATC discretion)

Path Terminator	Waypoint Identifier	Fly Over	Course °M(°T)	Magnetic Variation	Distance (NM)	Turn Direction	Altitude (ft)	Speed Limit (kt)	Navigation Specification
IF	ELBOD	-	-	-	-	-	-	-	RNAV1/RNP1(1)
TF	ME632	-	159 (161.6)	-	4.9	-	+6000	220	RNAV1/RNP1(1)
TF	ME628	-	102 (105.4)	-	4.2	-	+6000	220	RNAV1/RNP1(1)
TF	ME624	-	082 (084.9)	-	4.2	-	+6000	220	RNAV1/RNP1(1)
TF	ME620	-	062 (065.3)	-	4.2	-	+6000	220	RNAV1/RNP1(1)
TF	ME616	-	042 (045.3)	-	4.2	-	+6000	220	RNAV1/RNP1(1)
TF	ULVUN	Y	022 (025.4)	-	4.2	-	+6000	220	RNAV1/RNP1(1)
TF	TIXUM	-	282 (285.4)	-	12.0	L	+6000	AT 210	RNAV1/RNP1(1)

- (1) For "monitoring and alerting" reasons, RNP1 specification is required in case of radar service unavailability or degradation

ODAMO 4E (ATC discretion)

Path Terminator	Waypoint Identifier	Fly Over	Course °M(°T)	Magnetic Variation	Distance (NM)	Turn Direction	Altitude (ft)	Speed Limit (kt)	Navigation Specification
IF	ODAMO	-	-	-	-	-	-	-	RNAV1/RNP1(1)
TF	ME632	-	177 (179.7)	-	7.2	-	+6000	220	RNAV1/RNP1(1)
TF	ME628	-	102 (105.4)	-	4.2	-	+6000	220	RNAV1/RNP1(1)
TF	ME624	-	082 (084.9)	-	4.2	-	+6000	220	RNAV1/RNP1(1)
TF	ME620	-	062 (065.3)	-	4.2	-	+6000	220	RNAV1/RNP1(1)
TF	ME616	-	042 (045.3)	-	4.2	-	+6000	220	RNAV1/RNP1(1)
TF	ULVUN	Y	022 (025.4)	-	4.2	-	+6000	220	RNAV1/RNP1(1)
TF	TIXUM	-	282 (285.4)	-	12.0	L	+6000	AT 210	RNAV1/RNP1(1)

(1) For "monitoring and alerting" reasons, RNP1 specification is required in case of radar service unavailability or degradation

ODINA 4E

Path Terminator	Waypoint Identifier	Fly Over	Course °M(°T)	Magnetic Variation	Distance (NM)	Turn Direction	Altitude (ft)	Speed Limit (kt)	Navigation Specification
IF	ODINA	-	-	-	-	-	-	-	RNAV1/RNP1(1)
TF	ME872	-	118 (120.4)	-	33.9	-	+FL130	250	RNAV1/RNP1(1)
TF	ME860	-	118 (120.9)	-	12.0	-	+FL110	-	RNAV1/RNP1(1)
TF	OBFUL	-	118 (121.1)	-	5.0	-	+FL90	-	RNAV1/RNP1(1)
TF	OGVON	-	153 (156.4)	-	9.1	-	-FL90 +6000 (2)	230	RNAV1/RNP1(1)
TF	ME632	-	168 (171.1)	-	12.9	-	-FL90 +6000 (2)	220	RNAV1/RNP1(1)
TF	ME628	-	102 (105.4)	-	4.2	-	+6000	220	RNAV1/RNP1(1)
TF	ME624	-	082 (084.9)	-	4.2	-	-FL90 +6000	220	RNAV1/RNP1(1)
TF	ME620	-	062 (065.3)	-	4.2	-	-FL90 +6000	220	RNAV1/RNP1(1)
TF	ME616	-	042 (045.3)	-	4.2	-	-FL90 +6000	220	RNAV1/RNP1(1)
TF	ULVUN	Y	022 (025.4)	-	4.2	-	-FL90 +6000	220	RNAV1/RNP1(1)
TF	TIXUM	-	282 (285.4)	-	12.0	L	+6000	AT 210	RNAV1/RNP1(1)

(1) For "monitoring and alerting" reasons, RNP1 specification is required in case of radar service unavailability or degradation

(2) MEL80, or TRL if higher for RWY10 approach only

OSBUL 4E

Path Terminator	Waypoint Identifier	Fly Over	Course °M(°T)	Magnetic Variation	Distance (NM)	Turn Direction	Altitude (ft)	Speed Limit (kt)	Navigation Specification
IF	OSBUL	-	-	-	-	-	-	250	RNAV1/RNP1(1)
TF	ATMIP	-	325 (327.8)	-	16.0	-	+6000	230	RNAV1/RNP1(1)
TF	ME732	-	325 (327.6)	-	13.0	-	-FL120 +6000	220	RNAV1/RNP1(1)
TF	ME628	-	002 (005.2)	-	4.2	-	+6000	220	RNAV1/RNP1(1)
TF	ME624	-	082 (084.9)	-	4.2	-	-FL90 +6000	220	RNAV1/RNP1(1)
TF	ME620	-	062 (065.3)	-	4.2	-	-FL90 +6000	220	RNAV1/RNP1(1)
TF	ME616	-	042 (045.3)	-	4.2	-	-FL90 +6000	220	RNAV1/RNP1(1)
TF	ULVUN	Y	022 (025.4)	-	4.2	-	-FL90 +6000	220	RNAV1/RNP1(1)
TF	TIXUM	-	282 (285.4)	-	12.0	L	+6000	AT 210	RNAV1/RNP1(1)

(1) For "monitoring and alerting" reasons, RNP1 specification is required in case of radar service unavailability or degradation

OSKOR 4E

Path Terminator	Waypoint Identifier	Fly Over	Course °M(°T)	Magnetic Variation	Distance (NM)	Turn Direction	Altitude (ft)	Speed Limit (kt)	Navigation Specification
IF	OSKOR	-	-	-	-	-	-	250	RNAV1/RNP1(1)
TF	ME760	-	287 (290.4)	-	15.0	-	+FL110	-	RNAV1/RNP1(1)
TF	OBFUL	-	214 (217.3)	-	5.0	-	+FL90	-	RNAV1/RNP1(1)
TF	OGVON	-	153 (156.4)	-	9.1	-	-FL90 +6000 (2)	230	RNAV1/RNP1(1)
TF	ME632	-	168 (171.1)	-	12.9	-	-FL90 +6000 (2)	220	RNAV1/RNP1(1)
TF	ME628	-	102 (105.4)	-	4.2	-	+6000	220	RNAV1/RNP1(1)
TF	ME624	-	082 (084.9)	-	4.2	-	-FL90 +6000	220	RNAV1/RNP1(1)
TF	ME620	-	062 (065.3)	-	4.2	-	-FL90 +6000	220	RNAV1/RNP1(1)
TF	ME616	-	042 (045.3)	-	4.2	-	-FL90 +6000	220	RNAV1/RNP1(1)
TF	ULVUN	Y	022 (025.4)	-	4.2	-	-FL90 +6000	220	RNAV1/RNP1(1)
TF	TIXUM	-	282 (285.4)	-	12.0	L	+6000	AT 210	RNAV1/RNP1(1)

- (1) For "monitoring and alerting" reasons, RNP1 specification is required in case of radar service unavailability or degradation
(2) MEL80, or TRL if higher for RWY10 approach only

Holding RNAV

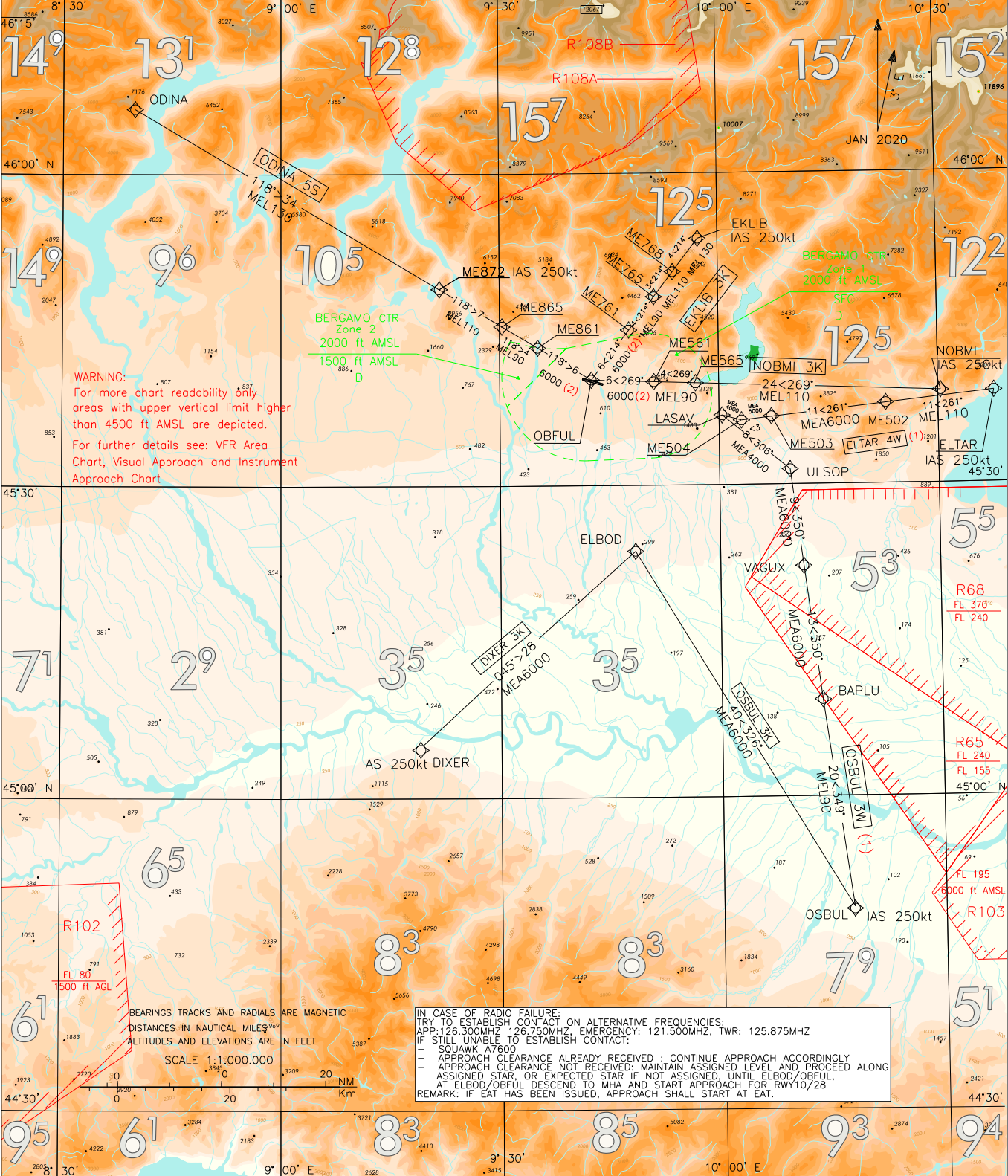
Path Terminator	Waypoint Identifier	Inbound Course °M (°T)	Leg Distance (NM) (1)	Timing(min.)/ Waypoint Distance (NM) (2)	Turn Direction	Minimum Altitude (FT)	Maximum Altitude (FL)	Speed Limit (kt)	Magnetic Variation (°)	Navigation Specification
HM	TIXUM	012 (015.0)	3.7	1/-	L	6000	-	-200	3 E	RNAV1/RNP1(3)
HM	OGVON	153 (156.0)	4.1	1/-	R	6000	-	-220	3 E	RNAV1/RNP1(3)
HM	ITVUN	078 (081.0)	4.3	1/-	L	6000	-	-230	3 E	RNAV1/RNP1(3)
HM	ULVUN	022 (025.0)	4.1	1/-	R	6000	-	-220	3 E	RNAV1/RNP1(3)
HM	ATMIP	325 (328.0)	4.3	1/-	L	6000	-	-230	3 E	RNAV1/RNP1(3)

- (1) RNAV system with holding functionality
(2) RNAV system without holding functionality
(3) For "monitoring and alerting" reasons, RNP1 specification is required in case of radar service unavailability or degradation

WAYPOINT LIST

Waypoint Identifier	Coordinates
ME616	45°22'59.95" N 010°11'44.13" E
ME620	45°20'04.21" N 010°07'31.75" E
ME624	45°18'19.71" N 010°02'09.69" E
ME628	45°17'57.77" N 009°56'16.45" E
ME632	45°19'04.31" N 009°50'34.50" E
ME732	45°13'48.48" N 009°55'44.39" E
ME740	45°12'06.89" N 009°46'34.68" E
ME760	45°44'09.51" N 009°46'52.13" E
ME768	45°50'31.27" N 009°53'47.28" E
ME860	45°42'45.36" N 009°36'26.56" E
ME872	45°48'56.43" N 009°21'45.02" E

(1) To be used only for ILS approach to RWY28 and when radar service available. (2) FL90 RWY28 approach only (3) For RNAV system with holding functionality (4) For RNAV system without holding functionality	FREQUENCIES APP Milano Radar 126.750 (126.300) TWR Orio TWR 125.875 (CH 134.105) ATIS Bergamo ATIS Information 118.540		STAR RNAV1/RNP1 ATC discretion	BERGAMO/ ORIO AL SERIO TRANSITION ALT 6000



CHANGE: ATIS FREQUENCY UPDATED

MNM SECT ALT 25 NM ARP 12400	OBFUL Holding Pattern RWY28 approach only IAS MAX 200 KT MHL 90 	OBFUL Holding Pattern RWY10 approach only IAS MAX 185KT MHA 6000	ELBOD Holding Pattern IAS MAX 200 KT MHA 6000
---	--	---	---

STAR RNAV1/RNP1 (ATC discretion) Bergamo / Orio al Serio**DIXER 3K**

Path Terminator	Waypoint Identifier	Fly Over	Course °M(°T)	Magnetic Variation	Distance (NM)	Turn Direction	Altitude (ft)	Speed Limit (kt)	Navigation Specification
IF	DIXER	-	-	-	-	-	-	250	RNAV1/RNP1(1)
TF	ELBOD	-	045 (047.4)	-	28.1	-	+6000	-	RNAV1/RNP1(1)

(1) For "monitoring and alerting" reasons, RNP1 specification is required in case of radar service unavailability or degradation

EKLIB 3K

Path Terminator	Waypoint Identifier	Fly Over	Course °M(°T)	Magnetic Variation	Distance (NM)	Turn Direction	Altitude (ft)	Speed Limit (kt)	Navigation Specification
IF	EKLIB	-	-	-	-	-	-	250	RNAV1/RNP1(1)
TF	ME768	-	214 (217.4)	-	4.0	-	+FL130	-	RNAV1/RNP1(1)
TF	ME765	-	214 (217.3)	-	3.0	-	+FL110	-	RNAV1/RNP1(1)
TF	ME761	-	214 (217.2)	-	4.0	-	+FL90	-	RNAV1/RNP1(1)
TF	OBFUL	-	214 (217.2)	-	6.0	-	+6000 (2)	-	RNAV1/RNP1(1)

(1) For "monitoring and alerting" reasons, RNP1 specification is required in case of radar service unavailability or degradation

(2) MEL90 RWY28 approach only

ELTAR 4W (to be used only for ILS approach to RWY28 and when radar service available)

Path Terminator	Waypoint Identifier	Fly Over	Course °M(°T)	Magnetic Variation	Distance (NM)	Turn Direction	Altitude (ft)	Speed Limit (kt)	Navigation Specification
IF	ELTAR	-	-	-	-	-	-	250	RNAV1/RNP1(1)
TF	ME502	-	261 (264.0)	-	10.5	-	+FL110	-	RNAV1/RNP1(1)
TF	ME503	-	261 (263.8)	-	11.0	-	+6000 FT	-	RNAV1/RNP1(1)
TF	ME504	-	261 (263.6)	-	3.0	-	+5000 FT	-	RNAV1/RNP1(1)
TF	LASAV	-	282 (285.1)	-	1.9	-	+4000 FT	-	RNAV1/RNP1(1)

(1) For "monitoring and alerting" reasons, RNP1 specification is required in case of radar service unavailability or degradation

NOBMI 3K

Path Terminator	Waypoint Identifier	Fly Over	Course °M(°T)	Magnetic Variation	Distance (NM)	Turn Direction	Altitude (ft)	Speed Limit (kt)	Navigation Specification
IF	NOBMI	-	-	-	-	-	-	250	RNAV1/RNP1(1)
TF	ME565	-	269 (272.4)	-	24.0	-	+FL110	-	RNAV1/RNP1(1)
TF	ME561	-	269 (272.1)	-	4.0	-	+FL90	-	RNAV1/RNP1(1)
TF	OBFUL	-	269 (272.0)	-	6.0	-	+6000 (2)	-	RNAV1/RNP1(1)

- (1) For "monitoring and alerting" reasons, RNP1 specification is required in case of radar service unavailability or degradation
(2) MEL90 RWY28 approach only

ODINA 5S

Path Terminator	Waypoint Identifier	Fly Over	Course °M(°T)	Magnetic Variation	Distance (NM)	Turn Direction	Altitude (ft)	Speed Limit (kt)	Navigation Specification
IF	ODINA	-	-	-	-	-	-	-	RNAV1/RNP1(1)
TF	ME872	-	118 (120.4)	-	33.9	-	+FL130	250	RNAV1/RNP1(1)
TF	ME865	-	118 (120.9)	-	7.0	-	+FL110	-	RNAV1/RNP1(1)
TF	ME861	-	118 (121.0)	-	4.0	-	+FL90	-	RNAV1/RNP1(1)
TF	OBFUL	-	118 (121.1)	-	6.0	-	+6000 (2)	-	RNAV1/RNP1(1)

- (1) For "monitoring and alerting" reasons, RNP1 specification is required in case of radar service unavailability or degradation
(2) MEL90 RWY28 approach only

OSBUL 3K

Path Terminator	Waypoint Identifier	Fly Over	Course °M(°T)	Magnetic Variation	Distance (NM)	Turn Direction	Altitude (ft)	Speed Limit (kt)	Navigation Specification
IF	OSBUL	-	-	-	-	-	-	250	RNAV1/RNP1(1)
TF	ELBOD	-	326 (329.1)	-	40.1	-	+6000	-	RNAV1/RNP1(1)

- (1) For "monitoring and alerting" reasons, RNP1 specification is required in case of radar service unavailability or degradation

OSBUL 3W (to be used only for ILS approach to RWY28 and when radar service available)

Path Terminator	Waypoint Identifier	Fly Over	Course °M(°T)	Magnetic Variation	Distance (NM)	Turn Direction	Altitude (ft)	Speed Limit (kt)	Navigation Specification
IF	OSBUL	-	-	-	-	-	-	250	RNAV1/RNP1(1)
TF	BAPLU	-	349 (352.1)	-	20.2	-	+FL90	-	RNAV1/RNP1(1)
TF	VAGUX	-	350 (352.7)	-	13.1	-	+6000 FT	-	RNAV1/RNP1(1)
TF	ULSOP	-	350 (352.6)	-	9.2	-	+6000 FT	-	RNAV1/RNP1(1)
TF	LASAV	-	306 (309.0)	-	8.3	-	+4000 FT	-	RNAV1/RNP1(1)

(1) For "monitoring and alerting" reasons, RNP1 specification is required in case of radar service unavailability or degradation

Holding RNAV

Path Terminator	Waypoint Identifier	Inbound Course °M(°T)	Leg Distance (NM) (1)	Timing(min.)/Waypoint Distance (NM) (2)	Turn Direction	Minimum Altitude (FT)	Maximum Altitude (FL)	Speed Limit (kt)	Magnetic Variation (°)	Navigation Specification
HM	OBFUL	127 (130.0)	3.9	-/-	L	+FL90	-	-200	3 E	RNAV1/RNP1(3)
HM	OBFUL	304 (307.0)	3.5	1/-	L	+6000	-	-185	3 E	RNAV1/RNP1(3)
HM	ELBOD	343 (346.0)	3.8	-/-	L	+6000	-	-200	3 E	RNAV1/RNP1(3)

(1) RNAV system with holding functionality

(2) RNAV system without holding functionality

(3) For "monitoring and alerting" reasons, RNP1 specification is required in case of radar service unavailability or degradation

WAYPOINT LIST

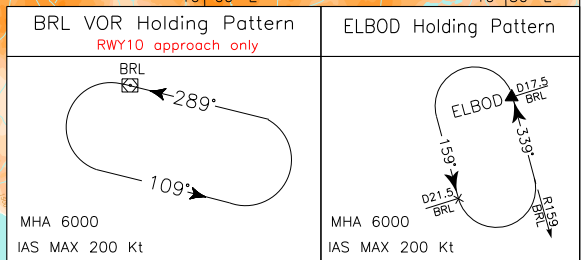
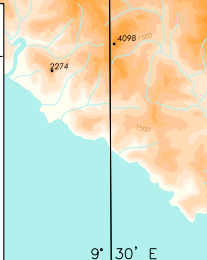
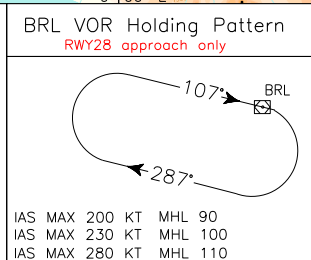
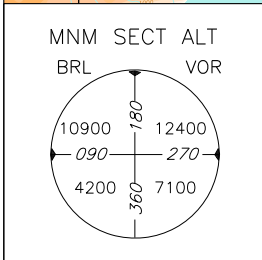
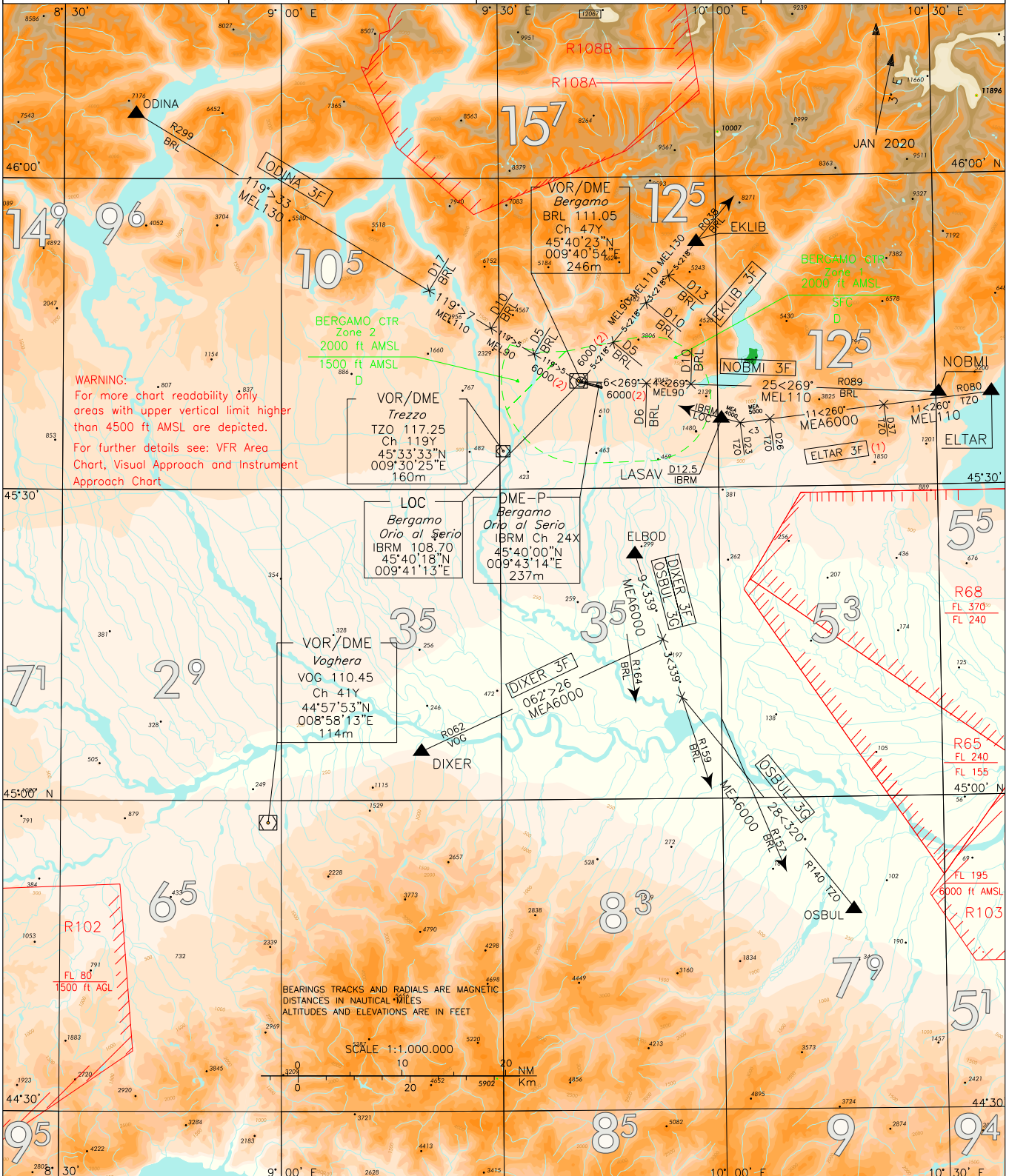
Waypoint Identifier	Coordinates
ME502	45°37'44.16" N 010°22'46.79" E
ME503	45°36'32.09" N 010°07'12.09" E
ME504	45°36'12.27" N 010°02'59.95" E
ME561	45°39'57.82" N 009°51'06.48" E
ME565	45°39'49.27" N 009°56'48.59" E
ME761	45°44'57.00" N 009°47'43.66" E
ME765	45°48'08.03" N 009°51'11.27" E
ME768	45°50'31.27" N 009°53'47.28" E
ME861	45°43'16.30" N 009°35'13.33" E
ME865	45°45'20.17" N 009°30'19.71" E
ME872	45°48'56.43" N 009°21'45.02" E

Intenzionalmente bianca

Intentionally left blank

<p>(1) To be used only for ILS approach RWY28 and when radar service available.</p> <p>(2) FL90 RWY28 approach only</p>	<p>FREQUENCIES</p> <p>APP Milano Radar 126.750 (126.300)</p> <p>TWR Orio TWR 125.875 (CH 134.105)</p> <p>ATIS Bergamo ATIS Information 118.540</p>		<p>STAR VOR</p> <p>ATC discretion</p> <p>Planned only for aircraft NOT RNAV equipped</p>	<p>BERGAMO/ ORIO AL SERIO</p>
				<p>TRANSITION ALT 6000</p>

CHANGE: ATIS FREQUENCY UPDATED, 'BRM', LOC/DME ID CHANGE IN 'IBRM', AND NEW CHARACTERISTICS, ELTAR 3F MODIFIED



STAR VOR (ATC discretion) Bergamo / Orio al Serio
(Planned only for aircraft NOT RNAV equipped)

DIXER 3F

DIXER proceed on TR 062° (RDL 062 VOG VOR) until crossing RDL 164 BRL VOR, then turn left until joining RDL159 BRL VOR (TR 339°) direct to ELBOD.

MEA: DIXER — ELBOD: 6000 FT

ELTAR 3F (to be used only for ILS approach to RWY28 and when radar service available)

ELTAR proceed on TR 260° (RDL 080 TZO VOR) until joining IBRM LOC direct to LASAV.

MEL/MEA: ELTAR - INT RDL 080 / 37 NM TZO VOR/DME: FL110; INT RDL 080 / 37 NM TZO VOR/DME – INT RDL 080 / 26 NM TZO VOR/DME: 6000 FT; INT RDL 080 / 26 NM TZO VOR/DME – INT RDL 080 / 23 NM TZO VOR/DME: 5000 FT; INT RDL 080 / 23 NM TZO VOR/DME – LASAV: 4000 FT

EKLIB 3F

EKLIB proceed on TR 218° (RDL 038 BRL VOR) direct to BRL VOR/DME.

MEL/MEA: EKLIB – INT RDL 038/13 NM BRL VOR DME: FL 130; INT RDL 038/13 NM BRL VOR DME – INT RDL 038/10 NM BRL VOR DME: FL 110; INT RDL 038/10 NM BRL VOR DME – INT RDL 038/5 NM BRL VOR DME: FL 90; INT RDL 038/5 NM BRL VOR DME – BRL VOR: 6000 FT (1)

(1) FL90 RWY28 approach only

NOBMI 3F

NOBMI proceed on TR 269° (RDL 089 BRL VOR) direct to BRL VOR/DME.

MEL/MEA: NOBMI – INT RDL 089/10 NM BRL VOR DME: FL 110; INT RDL 089/10 NM BRL VOR DME – INT RDL 089/6 NM BRL VOR DME: FL 90; INT RDL 089/6 NM BRL VOR DME – BRL VOR: 6000 FT (1)

(1) FL90 RWY28 approach only

ODINA 3F

ODINA proceed on TR 119° (RDL 299 BRL VOR) direct to BRL VOR/DME.

MEL/MEA: ODINA – INT RDL 299/17 NM BRL VOR DME: FL 130; INT RDL 299/17 NM BRL VOR DME – INT RDL 299/10 NM BRL VOR DME: FL 110; INT RDL 299/10 NM BRL VOR DME – INT RDL 299/5 NM BRL VOR DME: FL 90; INT RDL 299/5 NM BRL VOR DME – BRL VOR: 6000 FT (1)

(1) FL90 RWY28 approach only

OSBUL 3G

OSBUL proceed on TR 320° (RDL 140 TZO VOR) until crossing RDL157 BRL VOR then turn right on TR 339° (RDL 159 BRL VOR) direct to ELBOD.

MEA: OSBUL – ELBOD: 6000 FT

Intenzionalmente bianca

Intentionally left blank