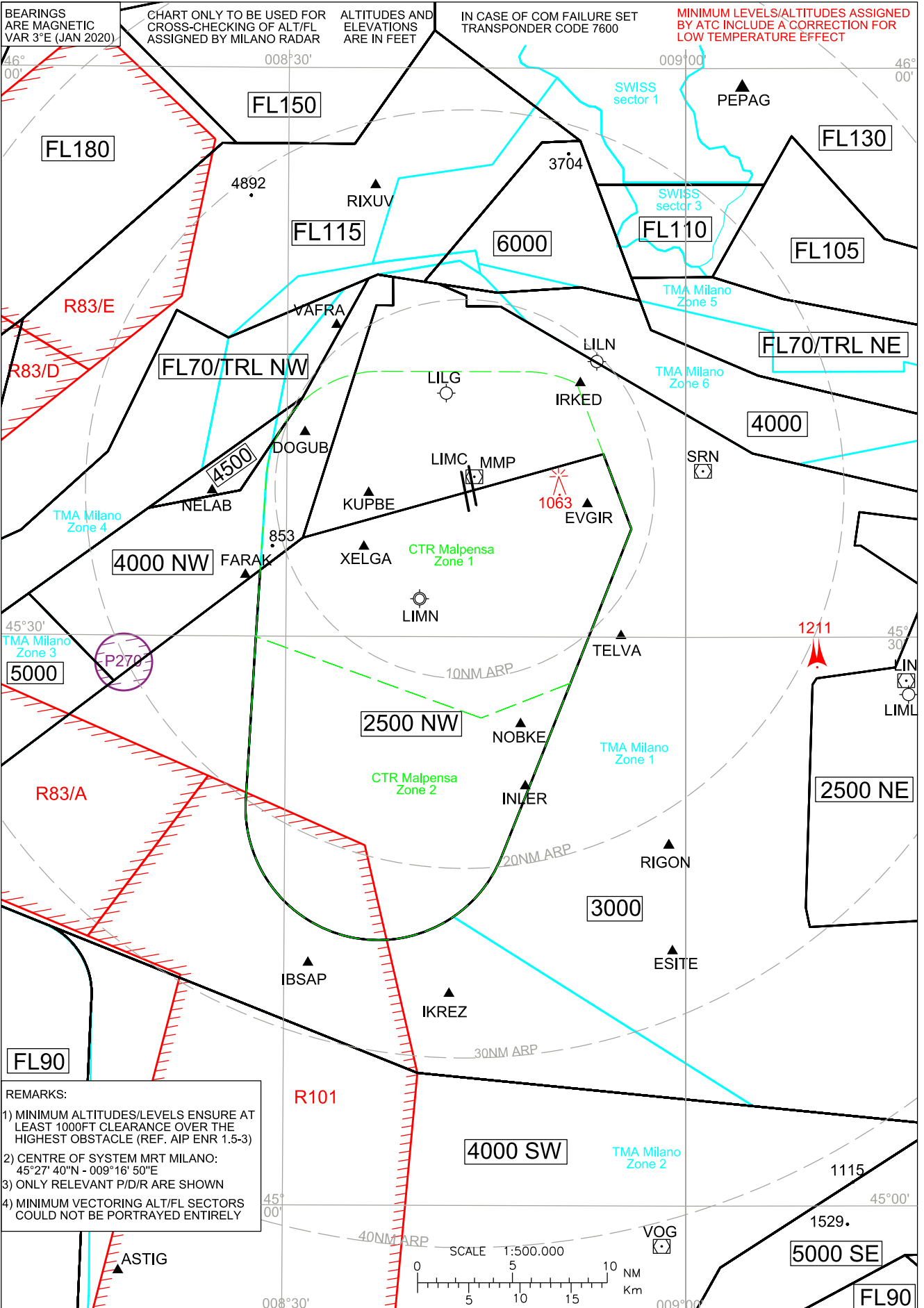


ATC SURVEILLANCE MINIMUM ALTITUDE CHART - ICAO

AD ELEV 768
TRANSITION ALT 6000

MILANO 126.750
RADAR 125.275

MILANO/Malpensa (LIMC)



BEARINGS ARE MAGNETIC VAR 3°E (JAN 2020)

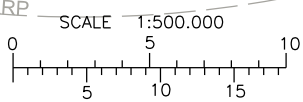
CHART ONLY TO BE USED FOR CROSS-CHECKING OF ALT/FL ASSIGNED BY MILANO RADAR

ALTITUDES AND ELEVATIONS ARE IN FEET

IN CASE OF COM FAILURE SET TRANSPONDER CODE 7600

MINIMUM LEVELS/ALTITUDES ASSIGNED BY ATC INCLUDE A CORRECTION FOR LOW TEMPERATURE EFFECT

- REMARKS:
- 1) MINIMUM ALTITUDES/LEVELS ENSURE AT LEAST 1000FT CLEARANCE OVER THE HIGHEST OBSTACLE (REF. AIP ENR 1.5-3)
 - 2) CENTRE OF SYSTEM MRT MILANO: 45°27' 40"N - 009°16' 50"E
 - 3) ONLY RELEVANT P/D/R ARE SHOWN
 - 4) MINIMUM VECTORING ALT/FL SECTORS COULD NOT BE PORTRAYED ENTIRELY



ATC SURVEILLANCE MINIMUM ALTITUDE CHART

Minimum Altitudes/Levels	Lateral Limits
1	2
2500 FT NORTH-WEST	Line joining following points: 45°35'12" N 008°31'14" E 45°33'29" N 008°28'03" E 45°29'58" N 008°27'45" E 45°21'24" N 008°27'05" E then arc of circle in anti-clockwise direction radius 7.0 NM centred on: 45°21'00" N 008°37'00" E till point: 45°18'27" N 008°46'15" E Line joining following points: 45°27'35" N 008°51'22" E 45°35'43" N 008°55'55" E 45°39'40" N 008°53'48" E 45°35'12" N 008°31'14" E
2500 FT NORTH-EAST	Line joining following points: 45°35'22" N 009°26'54" E 45°36'36" N 009°13'03" E 45°34'50" N 009°12'41" E 45°34'50" N 009°13'08" E 45°32'29" N 009°18'08" E 45°28'24" N 009°15'43" E 45°27'50" N 009°09'49" E 45°27'30" N 009°09'30" E 45°15'44" N 009°08'58" E 45°14'43" N 009°09'16" E 45°15'20" N 009°25'55" E 45°35'22" N 009°26'54" E
3000 FT	Line joining following points: 45°35'12" N 008°31'14" E 45°27'36" N 008°17'08" E 45°18'09" N 007°59'47" E 45°14'45" N 008°12'05" E 45°07'00" N 008°40'00" E 45°04'16" N 009°19'02" E 45°09'47" N 009°31'53" E 45°16'43" N 010°03'19" E 45°21'23" N 010°00'00" E 45°29'00" N 010°00'00" E 45°30'15" N 010°01'45" E 45°39'42" N 009°05'01" E 45°47'26" N 008°46'03" E 45°47'27" N 008°43'28" E 45°48'00" N 008°43'28" E 45°48'37" N 008°41'21" E 45°48'44" N 008°40'16" E 45°48'59" N 008°37'55" E 45°47'29" N 008°37'57" E 45°47'29" N 008°36'41" E 45°35'12" N 008°31'14" E REMARK: Minimum Altitudes 2500FT North-West, 2500FT North-East excluded
4000 FT NORTH-WEST	Line joining following points: 45°48'59" N 008°37'55" E 45°47'29" N 008°37'57" E 45°47'29" N 008°36'41" E 45°35'12" N 008°31'14" E 45°27'36" N 008°17'08" E 45°32'09" N 008°10'41" E 45°36'43" N 008°19'37" E 45°37'41" N 008°26'30" E 45°42'35" N 008°31'09" E 45°48'54" N 008°36'04" E 45°49'06" N 008°36'46" E 45°48'59" N 008°37'55" E
4000FT SOUTH-WEST	Line joining following points: 45°10'34" N 008°15'39" E 44°51'23" N 008°14'42" E 44°52'03" N 008°36'00" E 44°52'24" N 008°59'08" E 44°56'45" N 009°02'33" E 45°04'16" N 009°19'02" E 45°07'00" N 008°40'00" E 45°14'38" N 008°12'29" E then arc of circle in clockwise direction radius 4.0 NM centred on: 45°11'02" N 008°10'02" E till point: 45°10'34" N 008°15'39" E

Minimum Altitudes/Levels	Lateral Limits
1	2
4000FT	Line joining following points: 45°32'50" N 010°05'22" E 45°33'07" N 010°05'46" E 45°36'26" N 010°05'49" E 45°37'21" N 010°01'45" E 45°42'33" N 009°38'02" E 45°40'10" N 009°36'18" E 45°41'00" N 009°22'00" E 45°43'48" N 009°05'27" E 45°46'13" N 008°57'22" E 45°47'45" N 008°56'33" E 45°48'28" N 008°52'06" E 45°48'10" N 008°45'50" E 45°48'37" N 008°41'21" E 45°48'00" N 008°43'28" E 45°47'27" N 008°43'28" E 45°47'26" N 008°46'03" E 45°39'42" N 009°05'01" E 45°30'15" N 010°01'44" E 45°32'50" N 010°05'22" E
4500FT	Line joining following points: 45°36'43" N 008°19'37" E 45°42'35" N 008°31'09" E 45°37'41" N 008°26'30" E 45°36'43" N 008°19'37" E
5000FT SOUTH-EAST	Line joining following points: 44°57'24" N 009°16'18" E 44°52'28" N 009°03'19" E 44°52'24" N 008°59'08" E 44°56'45" N 009°02'33" E 45°04'16" N 009°19'02" E 45°09'47" N 009°31'53" E 45°16'43" N 010°03'19" E 45°00'06" N 010°15'04" E 44°42'00" N 010°32'00" E 44°45'25" N 010°12'43" E then arc of circle in anti-clockwise direction radius 7.0 NM centred on: 44°46'30" N 010°03'00" E till point: 44°50'52" N 010°10'42" E Line joining following points: 45°00'32" N 010°00'07" E then arc of circle in anti-clockwise direction radius 5.0 NM centred on: 44°57'30" N 009°54'30" E till point: 45°02'10" N 009°57'03" E Line joining following points: 45°03'37" N 009°51'46" E 45°00'00" N 009°48'11" E 44°57'40" N 009°40'09" E 44°57'24" N 009°16'18" E
5000FT	Line joining following points: 45°21'21" N 007°48'05" E 45°18'09" N 007°59'47" E 45°27'36" N 008°17'08" E 45°32'09" N 008°10'41" E 45°28'37" N 008°03'49" E 45°21'21" N 007°48'05" E
6000FT	Line joining following points: 45°47'45" N 008°56'33" E 45°48'28" N 008°52'06" E 45°48'10" N 008°45'50" E 45°48'37" N 008°41'21" E 45°48'44" N 008°40'16" E 45°56'06" N 008°49'08" E 45°56'11" N 008°52'02" E 45°53'52" N 008°53'17" E 45°48'58" N 008°55'54" E 45°47'45" N 008°56'33" E
FL70/TRL NORTH-EAST	Line joining following points: 45°37'21" N 010°01'45" E 45°42'33" N 009°38'02" E 45°40'10" N 009°36'18" E 45°41'00" N 009°22'00" E 45°43'48" N 009°05'27" E 45°46'13" N 008°57'22" E 45°48'58" N 008°55'54" E 45°49'00" N 009°02'00" E 45°47'51" N 009°07'18" E 45°45'23" N 009°25'27" E 45°45'11" N 009°39'57" E 45°44'07" N 009°48'45" E 45°41'07" N 010°03'28" E 45°37'21" N 010°01'45" E

Minimum Altitudes/Levels	Lateral Limits
1	2
FL70/TRL NORTH-WEST	Line joining following points: 45°28'37" N 008°03'49" E 45°21'21" N 007°48'05" E 45°22'35" N 007°43'36" E 45°23'30" N 007°44'39" E 45°25'22" N 007°48'32" E 45°29'24" N 007°59'21" E 45°34'07" N 008°05'50" E 45°35'30" N 008°10'03" E 45°39'41" N 008°16'32" E 45°47'10" N 008°21'38" E 45°45'44" N 008°25'33" E 45°48'54" N 008°36'04" E 45°42'35" N 008°31'09" E 45°32'09" N 008°10'41" E 45°28'37" N 008°03'49" E
FL90	Line joining following points: 44°28'40" N 007°54'25" E 44°41'36" N 007°26'22" E then arc of circle in clockwise direction radius 10.0 NM centred on: 44°50'00" N 007°34'00" E till point: 44°50'27" N 007°19'57" E Line joining following points: 44°54'51" N 007°20'13" E 45°22'35" N 007°43'36" E 45°21'21" N 007°48'05" E 45°18'09" N 007°59'47" E 45°14'45" N 008°12'05" E then arc of circle in clockwise direction radius 4.0 NM centred on: 45°11'02" N 008°10'02" E till point: 45°10'34" N 008°15'39" E Line joining following points: 44°51'23" N 008°14'42" E 44°52'03" N 008°36'00" E 44°52'24" N 008°59'08" E 44°52'28" N 009°03'19" E 44°57'24" N 009°16'18" E 44°47'24" N 009°32'44" E 44°44'24" N 009°15'30" E 44°44'44" N 009°06'45" E 44°37'22" N 009°04'03" E 44°31'51" N 009°17'15" E 44°31'58" N 009°22'20" E 44°26'59" N 009°21'47" E 44°24'14" N 009°30'43" E 44°32'20" N 009°38'32" E then arc of circle in clockwise direction radius 35.0 NM centred on: 44°24'41" N 008°50'49" E till point: 44°22'00" N 009°40'00" E Line joining following points: 44°14'30" N 009°28'00" E 44°02'07" N 009°27'55" E then arc of circle in clockwise direction radius 5.0 NM centred on: 44°01'59" N 009°20'59" E till point: 43°56'59" N 009°20'44" E Line joining following points: 43°58'01" N 008°31'33" E then arc of circle in clockwise direction radius 30.0 NM centred on: 44°24'41" N 008°50'49" E till point: 44°13'06" N 008°12'12" E Line joining following points: 44°17'23" N 008°18'31" E 44°28'40" N 007°54'25" E
FL105	Line joining following points: 45°39'54" N 010°07'00" E 45°40'58" N 010°04'09" E 45°41'07" N 010°03'28" E 45°44'07" N 009°48'45" E 45°45'11" N 009°39'57" E 45°45'23" N 009°25'27" E 45°47'51" N 009°07'18" E 45°49'00" N 009°02'00" E 45°53'52" N 009°05'55" E 45°56'26" N 009°08'00" E 45°51'00" N 009°15'00" E 45°48'55" N 009°25'32" E 45°51'44" N 009°28'54" E 45°48'23" N 010°07'00" E 45°39'54" N 010°07'00" E
FL110	Line joining following points: 45°49'00" N 009°02'00" E 45°48'58" N 008°55'54" E 45°53'52" N 008°53'17" E 45°53'52" N 009°05'55" E 45°49'00" N 009°02'00" E

Minimum Altitudes/Levels	Lateral Limits
1	2
FL115	Line joining following points: 45°56'00" N 008°35'00" E 45°56'00" N 008°25'00" E 45°46'39" N 008°10'03" E 45°38'43" N 008°07'17" E 45°33'28" N 008°00'52" E 45°26'51" N 007°46'55" E 45°25'39" N 007°44'25" E 45°21'21" N 007°29'41" E 45°07'58" N 007°21'03" E 44°54'51" N 007°20'13" E 45°22'35" N 007°43'36" E 45°23'30" N 007°44'39" E 45°25'22" N 007°48'32" E 45°29'24" N 007°59'21" E 45°34'07" N 008°05'50" E 45°35'30" N 008°10'03" E 45°39'41" N 008°16'32" E 45°47'10" N 008°21'38" E 45°45'44" N 008°25'33" E 45°48'54" N 008°36'04" E 45°49'06" N 008°36'46" E 45°48'44" N 008°40'16" E 45°56'06" N 008°49'08" E 45°56'11" N 008°52'02" E 46°02'00" N 008°41'00" E 45°56'00" N 008°35'00" E
FL130	Line joining following points: 46°06'24" N 008°40'49" E 46°10'53" N 009°11'40" E 46°10'55" N 009°12'13" E 46°04'25" N 009°29'59" E 45°57'00" N 009°50'00" E 45°57'00" N 010°07'00" E 45°48'23" N 010°07'00" E 45°51'44" N 009°28'54" E 45°48'55" N 009°25'32" E 45°51'00" N 009°15'00" E 45°56'26" N 009°08'00" E 45°53'52" N 009°05'55" E 45°53'52" N 008°53'17" E 45°56'11" N 008°52'02" E 46°02'00" N 008°41'00" E 46°06'08" N 008°41'00" E 46°06'24" N 008°40'49" E
FL150	Line joining following points: 46°06'23" N 008°40'14" E 46°02'49" N 008°16'13" E 45°56'00" N 008°26'03" E 45°56'00" N 008°35'00" E 46°02'00" N 008°41'00" E 46°06'08" N 008°41'00" E 46°06'24" N 008°40'49" E 46°06'23" N 008°40'14" E
FL180	Line joining following points: 46°01'45" N 008°09'14" E 45°47'00" N 008°00'00" E 45°42'14" N 007°23'11" E 45°07'58" N 007°21'03" E 45°21'21" N 007°29'41" E 45°25'39" N 007°44'25" E 45°26'51" N 007°46'55" E 45°30'00" N 007°42'30" E 45°35'39" N 007°42'07" E 45°34'22" N 007°47'11" E 45°46'39" N 008°10'03" E 45°56'00" N 008°25'00" E 45°56'00" N 008°26'03" E 46°02'49" N 008°16'13" E 46°01'45" N 008°09'14" E