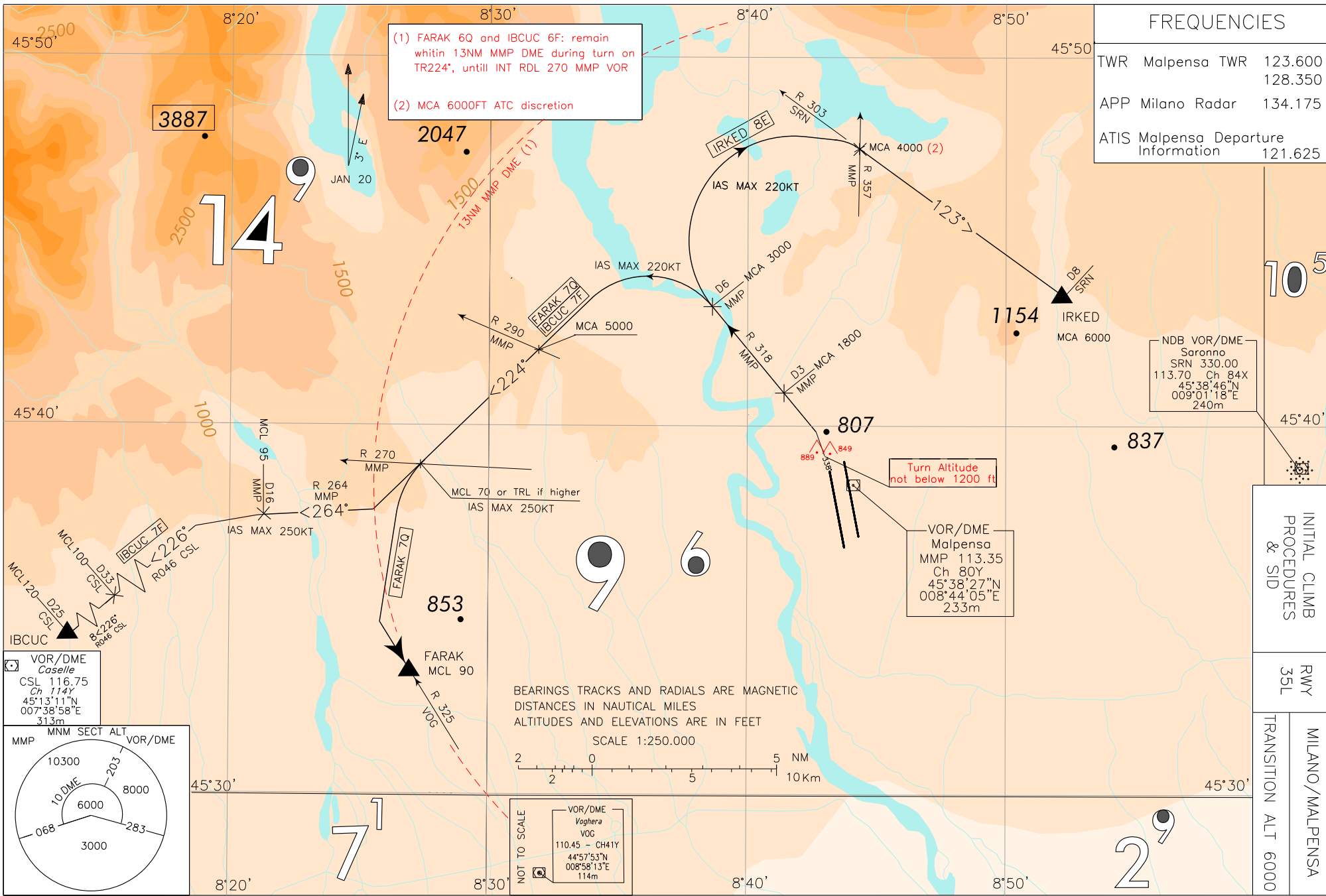


CHANGE: TWR FREQ UPDATED

ENAV - Roma

AIRAC effective date 29 DEC 2022 (A12/22)



(1) FARAK 6Q and IBCUC 6F: remain within 1.3NM MMP DME during turn on TR224°, until INT RDL 270 MMP VOR  
 (2) MCA 6000FT ATC discretion

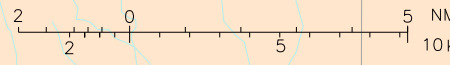
FREQUENCIES	
TWR Malpensa	123.600
TWR	128.350
APP Milano Radar	134.175
ATIS Malpensa Departure Information	121.625

NDB VOR/DME Saronno  
 SRN 330.00  
 113.70 Ch 84X  
 45°38'46"N  
 009°01'18"E  
 240m

Turn Altitude not below 1200 ft

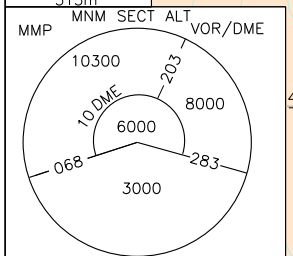
VOR/DME Malpensa  
 MMP 113.35  
 Ch 80Y  
 45°38'27"N  
 008°44'05"E  
 233m

BEARINGS TRACKS AND RADIALS ARE MAGNETIC  
 DISTANCES IN NAUTICAL MILES  
 ALTITUDES AND ELEVATIONS ARE IN FEET  
 SCALE 1:250.000



NOT TO SCALE  
 VOR/DME Voghera  
 VOG  
 110.45 - CH41Y  
 44°57'53"N  
 008°58'13"E  
 114m

VOR/DME Caselle  
 CSL 116.75  
 Ch 114Y  
 45°13'11"N  
 007°38'58"E  
 313m



AIP - Italia

AD 2 LIMC 6-1

INITIAL CLIMB PROCEDURES & SID

RWY 35L

TRANSITION ALT 6000  
 MILANO/MALPENSA

**NOISE ABATEMENT PROCEDURES RWY 35L**

See AD 2 Table 21 “NOISE ABATEMENT PROCEDURES”

**INITIAL CLIMB PROCEDURES RWY 35L**

If cleared via SID IBCUC 7F, FARAK 7Q and IRKED 8E, after take-off proceed on TR 338°. Not below 1200 ft turn left to join the assigned SID

**REMARK**

**For FARAK 7Q and IRKED 8E Minimum climb gradient 7.5% (456 ft/NM) until passing 6000 ft**  
**For IBCUC 7F Minimum climb gradient 7.5% (456 ft/NM) until passing FL95**

**WARNING**

There are close-in obstacles penetrating OIS 2.5%

**SID DESCRIPTION RWY 35L**

Initial climb procedure executed:

**IBCUC 7F**

Join RDL 318 MMP VOR till point RDL 318/6 NM MMP VOR/DME, then turn left (IAS MAX 220KT) on TR224° to join and follow RDL 264 MMP VOR. At 16NM MMP DME turn left to intercept and follow RDL 046 CSL VOR (TR 226°) bound to IBCUC (RDL 046/25NM CSL VOR/DME).

**REMARK**

**Remain within 13NM MMP DME during the turn on TR 224°, until INT RDL 270 MMP VOR.**

MCA/MCL: RDL 318/3 NM MMP VOR/DME, 1800 FT; RDL 318/6 NM MMP VOR/DME, 3000 FT;  
 INT TR 224° / RDL 290 MMP VOR, 5000FT; INT TR 224° / RDL 270 MMP VOR, FL 70 or TRL if higher;  
 RDL 264/16NM MMP VOR/DME, FL95; RDL 046/33 NM CSL VOR/DME, FL100; IBCUC, FL 120.

**IRKED 8E**

Join RDL 318 MMP VOR till point RDL 318/6 NM MMP VOR/DME, then turn right (IAS MAX 220KT) to join and follow RDL 303 SRN VOR (TR 123°) bound to IRKED (RDL 303/8NM SRN VOR/DME).

MCA/MCL: RDL 318/3 NM MMP VOR/DME, 1800 FT; RDL318/6 NM MMP VOR/DME, 3000 FT;  
 INT RDL 303 SRN VOR and RDL 357 MMP, 4000FT(6000FT ATC discretion); IRKED, 6000FT.

**FARAK 7Q**

Join RDL 318 MMP VOR till point RDL 318/6 NM MMP VOR/DME, then turn left (IAS MAX 220KT) on TR224°. At INT TR 224° / RDL 270 MMP VOR turn left (IAS MAX 250KT) to join RDL 325 VOG VOR bound to FARAK (RDL 325/42 NM VOG VOR/DME).

**REMARK**

**Remain within 13NM MMP DME during the turn on TR 224°, until INT RDL 270 MMP VOR.**

MCA/MCL: RDL 318/3 NM MMP VOR/DME, 1800 FT; RDL 318/6 NM MMP VOR/DME, 3000 FT;  
 INT TR 224° / RDL 290 MMP VOR, 5000FT; INT TR 224° / RDL 270 MMP VOR, FL 70 or TRL if higher;  
 FARAK, FL90.

**USE OF AERODROME BY AIRCRAFT CHAPTER 2 ANNEX 16 ICAO.**

Aircraft chapter 2 annex 16 ICAO cannot use Malpensa airport, except for emergency.

Intenzionalmente bianca

*Intentionally left blank*



**NOISE ABATEMENT PROCEDURES RWY 35R**

See AD 2 Table 21 "NOISE ABATEMENT PROCEDURES"

**INITIAL CLIMB PROCEDURES RWY 35**

- A) If cleared via SID SRN 8G, TELVA 8G (ATC discretion) and MMP 8G, after take-off proceed on TR 356°. At 4.1 NM MMP DME turn right to join the assigned SID.

**REMARKS**

1. **Minimum climb gradient 7.58% (461 ft/NM) until passing:**
  - 3000 ft for SRN 8G
  - Transition level for TELVA 8G (ATC discretion)
  - 4000 ft for MMP 8G
2. **Turn at 4.1 NM MMP DME shall be executed with IAS MAX 220KT**

- B) If cleared via SID SRN 7H, TELVA 7H (ATC discretion) and MMP 7H, after take-off proceed on TR 356° until passing 1300ft to join the assigned SID.

**REMARKS**

1. **Minimum climb gradient 7.58% (461 ft/NM) until passing 3000 ft, then 5.76% (350 ft/NM).**
2. **Turn leaving 1300FT shall be executed with IAS MAX 200KT**

**WARNING (for all ICP RWY 35R)**

There are close-in obstacles penetrating OIS 2.5% but they were not considered for the published procedure design gradient (see ICAO Obstacle Charts and NOTAM in force).

**SID DESCRIPTION RWY 35R**

Initial climb procedure executed:

**MMP 8G**

Join RDL 303 SRN VOR till point IRKED (RDL 303/8NM SRN VOR/DME) then turn right (IAS MAX 230KT) to join RDL 353 VOG VOR. Leaving 4000 FT turn right (IAS MAX 230KT) to join RDL 266 SRN VOR (RDL 086 MMP VOR) bound to MMP VOR/DME.

MCA/MCL: INT TR 356°/4.1 NM MMP DME, 2200 FT; INT RDL 009 MMP VOR, 3000 FT

**MMP 7H**

Turn right (on TR 068° for Cat. C aircraft) to join and follow RDL 036 MMP VOR until 5 NM MMP DME, then turn right (IAS MAX 230KT) on TR 173°. Passing through 4000ft turn right (IAS MAX 230KT) to join RDL 266 SRN VOR (RDL 086 MMP VOR) bound to MMP VOR/DME.

MCA/MCL: 5NM MMP DME, 3000 FT

**SRN 8G**

Join RDL 303 SRN VOR bound to SRN VOR/NDB.

MCA/MCL: INT TR356°/4.1 NM MMP DME, 2200 FT; INT RDL 009 MMP VOR, 3000 FT; SRN VOR/NDB, 6000 FT

**SRN 7H**

Turn right (on TR 068° for Cat. C aircraft) to join RDL 036 MMP VOR until 5 NM MMP DME, then turn right (IAS MAX 230KT) to RDL 303 SRN VOR direct to SRN VOR/NDB.

MCA/MCL: 5NM MMP DME, 3000 FT; SRN VOR/NDB, 6000 FT

**TELVA 8G (ATC discretion)**

Join RDL 303 SRN VOR till point IRKED (RDL 303/8NM SRN VOR/DME), then turn right (IAS MAX 230KT) to join RDL 353 VOG VOR bound to TELVA (INT RDL 353/32 NM VOG VOR/DME).

MCA/MCL: INT TR 356°/4.1 NM MMP DME, 2200 FT; INT RDL 009 MMP VOR, 3000 FT; RDL 353/38 NM VOG VOR/DME, TRL; TELVA, FL100

**TELVA 7H (ATC discretion)**

Turn right (on TR 068° for Cat. C aircraft) to join and follow RDL 036 MMP VOR until 5 NM MMP DME, then turn right (IAS MAX 230KT) to join and follow RDL 353 VOG VOR direct to TELVA (INT RDL 353/32 NM VOG VOR/DME).

MCA/MCL: 5NM MMP DME, 3000 FT; RDL 353/38 NM VOG VOR/DME, TRL; TELVA, FL 100

**USE OF AERODROME BY AIRCRAFT CHAPTER 2 ANNEX 16 ICAO.**

Aircraft chapter 2 annex 16 ICAO cannot use Malpensa airport, except for emergency

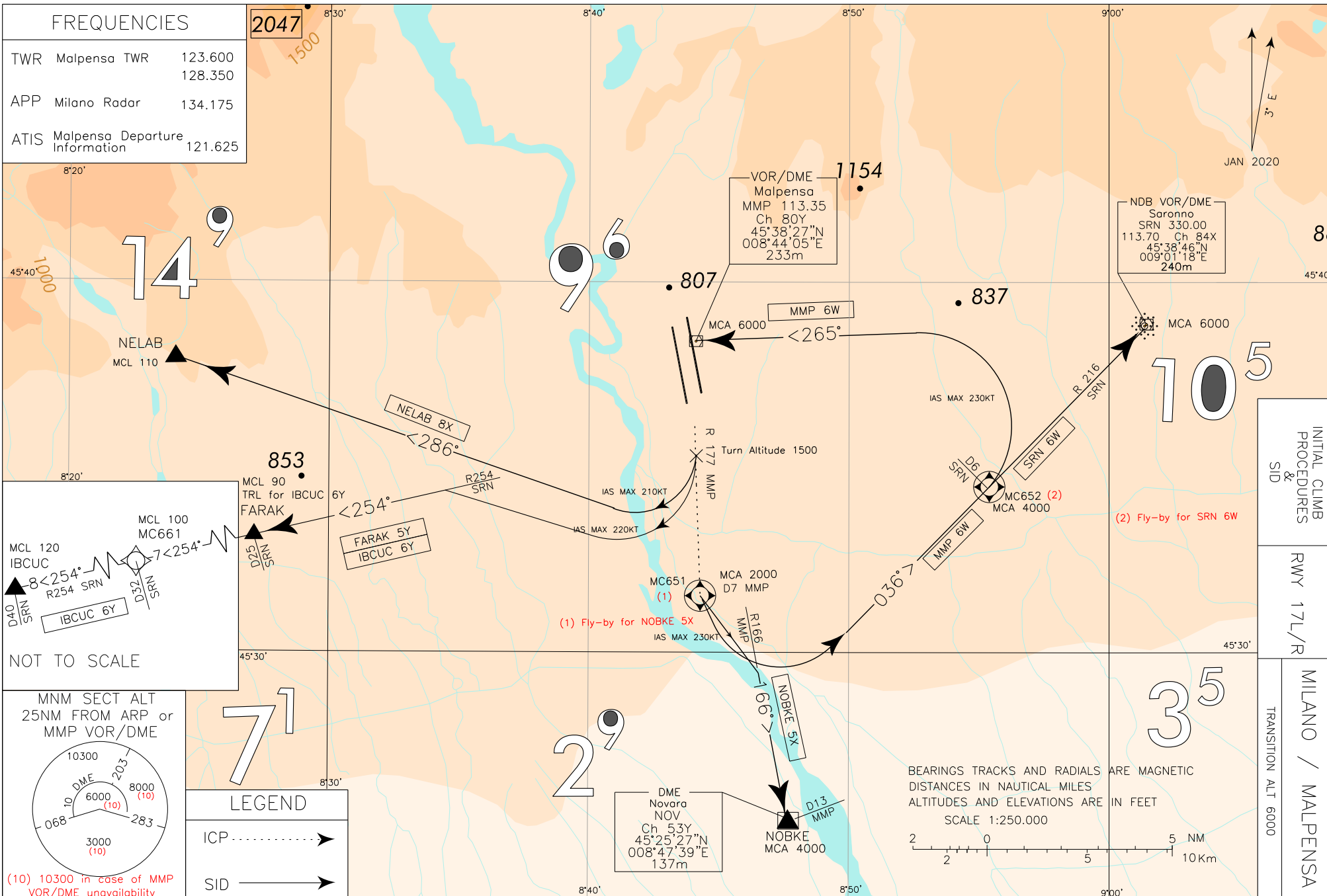
Intenzionalmente bianca

*Intentionally left blank*

CHANGE: TWR FREQ UPDATED

ENAV - Roma

AIP - Italia



FREQUENCIES		
TWR	Malpensa TWR	123.600
		128.350
APP	Milano Radar	134.175
ATIS	Malpensa Departure Information	121.625

2047

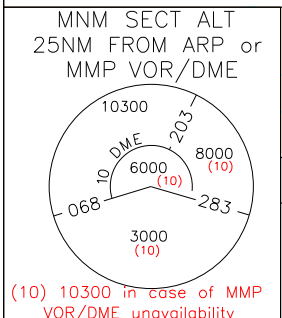
NOT TO SCALE

MCL 120 IBCUC  
MCL 100 MC661  
MCL 90 FARAK  
MCL 80 IBCUC

IBUCUC 6Y

IBUCUC 5Y  
IBUCUC 6Y

IBUCUC 6Y



LEGEND	
ICP	.....>
SID	————>

BEARINGS TRACKS AND RADIALS ARE MAGNETIC  
DISTANCES IN NAUTICAL MILES  
ALTITUDES AND ELEVATIONS ARE IN FEET  
SCALE 1:250.000

INITIAL CLIMB PROCEDURES & SID
RWY 17L/R
MILANO / MALPENSA
TRANSITION ALT 6000

AIRAC effective date 29 DEC 2022 (A12/22)

AD 2 LIMC 6-9

**NOISE ABATEMENT PROCEDURES RWY 17 L/R**

Noise abatement procedures (see ENR 1.5) shall be applied until passing 4000 ft AMSL.

Initial climb procedures shall be performed using the maximum rate of climb compatible with the aircraft performances until passing 5000 ft AMSL.

**INITIAL CLIMB PROCEDURES RWY 17 L/R**

- A) If cleared via SID: **FARAK 5Y, IBCUC 6Y, NELAB 8X**, after take-off intercept and follow RDL 177 MMP VOR until passing 1500ft AMSL, to join the assigned SID.

**REMARK1****Minimum climb gradient:**

- 7.5% (456 ft/NM) until passing Transition Level for IBCUC 6Y
- 7.5% (456 ft/NM) until passing FL90 for FARAK 5Y
- 8% (486 ft/NM) until passing FL 135 for NELAB 8X

**SID FARAK 5Y, IBCUC 6Y and NELAB 8X subject to traffic in Cameri ATZ.**

- B) If cleared via SID: **MMP 6W, NOBKE 5X, SRN 6W**, after take-off intercept and follow RDL 177 MMP VOR until reaching MC651 (D7 MMP DME) to join the assigned SID.

MCA: MC651 (RDL177/7 NM MMP VOR/DME), 2000 FT;

**REMARK2****Minimum climb gradient:**

- 7.5% (456 ft/NM) until passing 5000 ft

**WARNING**

Close-in obstacles: aircraft on taxiway H between runway head 35L and 35R.

**SID DESCRIPTION RWY 17 L/R**

Initial climb procedure executed:

**FARAK 5Y**

Path Terminator	Waypoint Identifier	Fly Over	Course °M(°T)	Magnetic Variation	Distance (NM)	Turn Direction	Altitude (ft)	Speed Limit (IAS)	Navigation Specification
CA	-	-	166 (169.0)	-	-	-	1092 ft	-	RNAV1
CA	-	-	177 (179.9)	-	-	-	1500 ft	-	RNAV1
CF	FARAK	-	254 (256.3)	3°	-	R	FL90	- 220	RNAV1



**IBCUC 6Y**

Turn right (IAS MAX 220 KT) to intercept and follow RDL 254 SRN VOR (TR 254°) bound to FARAK (RDL 254/25 NM SRN VOR/DME), then IBCUC (RDL 254/40 NM SRN VOR/DME).

MCA/MCL: FARAK, TRL; RDL 254/32 NM SRN VOR/DME, FL100; IBCUC, FL120

Path Terminator	Waypoint Identifier	Fly Over	Course °M(°T)	Magnetic Variation	Distance (NM)	Turn Direction	Altitude (ft)	Speed Limit (IAS)	Navigation Specification
CA	-	-	166 (169.0)	-	-	-	1092	-	RNAV1
CA	-	-	177 (179.9)	-	-	-	1500	-	RNAV1
CF	FARAK	-	254 (256.3)	3°	-	R	TRL	- 220	RNAV1
CF	MC661	-	254 (256.3)	3°	7.3		FL100	-	RNAV1
TF	IBCUC	-	254 (256.6)	-	7.9	-	FL120	-	RNAV1

**MMP 6W**

Turn left (IAS MAX 230 KT) on TR 036° (RDL 216 SRN VOR) until point RDL 216/6 NM SRN VOR/DME, then turn left (IAS MAX 230 KT) to MMP VOR/DME.

MCA/MCL: RDL 216/6 NM SRN VOR/DME, 4000 FT; MMP VOR/DME 6000 FT

Path Terminator	Waypoint Identifier	Fly Over	Course °M(°T)	Magnetic Variation	Distance (NM)	Turn Direction	Altitude (ft)	Speed Limit (IAS)	Navigation Specification
CA	-	-	166 (169.0)	-	-	-	1092	-	RNAV1
CF	MC651	Y	177 (179.9)	3°	-	-	2000	-	RNAV1
CF	MC652	Y	036 (038.9)	3°	-	L	4000	- 230	RNAV1
CF	MMP	-	265 (267.5)	3°	-	-	6000	- 230	RNAV1

**NELAB 8X**

Path Terminator	Waypoint Identifier	Fly Over	Course °M(°T)	Magnetic Variation	Distance (NM)	Turn Direction	Altitude (ft)	Speed Limit (IAS)	Navigation Specification
CA	-	-	166 (169.0)	-	-	-	1092	-	RNAV1
CA	-	-	177 (179.9)	-	-	-	1500	-	RNAV1
CF	NELAB	-	286 (288.7)	3°	-	R	FL 110	- 210	RNAV1

**NOBKE 5X**

Turn left (IAS MAX 230 KT) to intercept and follow RDL 166 MMP VOR (TR 166°) bound to NOBKE (RDL 166/13 NM MMP VOR/DME).

MCA/MCL: NOBKE, 4000 FT

Path Terminator	Waypoint Identifier	Fly Over	Course °M(°T)	Magnetic Variation	Distance (NM)	Turn Direction	Altitude (ft)	Speed Limit (IAS)	Navigation Specification
CA	-	-	166 (169.0)	-	-	-	1092	-	RNAV1
CF	MC651	-	177 (179.9)	3°	-	-	2000	-	RNAV1
CF	NOBKE	-	166 (169.1)	3°	6.7	-	4000	- 230	RNAV1

**SRN 6W**

Turn left (IAS MAX 230 KT) on TR 036° (RDL 216 SRN VOR) bound to SRN VOR/NDB.

MCA: RDL 216/6 NM SRN VOR/DME, 4000 FT; SRN VOR/NDB, 6000 FT

Path Terminator	Waypoint Identifier	Fly Over	Course °M(°T)	Magnetic Variation	Distance (NM)	Turn Direction	Altitude (ft)	Speed Limit (IAS)	Navigation Specification
CA	-	-	166 (169.0)	-	-	-	1092	-	RNAV1
CF	MC651	Y	177 (179.9)	3°	-	-	2000	-	RNAV1
CF	MC652	-	036 (038.9)	3°	-	L	4000	- 230	RNAV1
TF	SRN	-	036 (038.9)	-	6.0	-	6000	-	RNAV1

**WAYPOINT LIST**

Waypoint Identifier	Coordinates
MC651	45°31'27.19" N 008°44'06.82" E
MC652	45°34'05.20" N 008°55'55.37" E
MC661	45°31'29.04" N 008°16'54.36" E

Intenzionalmente bianca

*Intentionally left blank*



## NOISE ABATEMENT PROCEDURES RWY 35L

## SID DESCRIPTION RWY 35L

## REMARK FOR SID FARAK 6N, IBCUC 6N, NELAB 6N

## REMARK 1

Turn to MC627 on course 278° shall be started as soon as practicable, even before the end of the runway, provided that the turn altitude of 1200 ft on track 346° is reached (IAS MAX 200KT).

## Minimum climb gradient:

- 7.5% (456 ft/NM) until passing Transition Level for FARAK 6N and IBCUC 6N
- 8% (486 ft/NM) until FL 135 for NELAB 5N

## REMARK 2

During turn to MC627 on course 278° (IAS MAX 200KT), do not overshoot RDL 270 SRN VOR. Pilots of ACFT B737 series 400 expecting to be unable to comply with such restriction shall advise ATC at start-up and ask for an alternative SID (Provision nr UEN/334/TRAF of Civil Aviation Authority dated 06 NOV 2002).

## REMARK 3

Radius of turn 1.5 NM or bank angle 25°, if unable to comply advise ATC at start-up.

## REMARK 4

SID FARAK 6N, IBCUC 6N, NELAB 6N only for ACFT cat. A/B/C.

## WARNING

There are close-in obstacles penetrating OIS 2.5%.

## FARAK 6A

## REMARK

Minimum climb gradient 7.5% (456 ft/NM) until passing 3000 ft.

Path Terminator	Waypoint Identifier	Fly Over	Course °M(°T)	Magnetic Variation	Distance (NM)	Turn Direction	Altitude (ft)	Speed Limit (kt)	Navigation Specification
CA	-	-	346 (349.0)	-	-	-	1200	-	RNAV1
DF	MC623	-	-	-	-	-	1800	210	RNAV1
TF	MC624	-	318 (320.9)	-	3.0	-	3000	-	RNAV1
TF	MC628	-	318 (320.9)	-	2.3	-	-	-	RNAV1
TF	NELAB	-	227 (230.1)	-	11.2	L	TRL	220	RNAV1
TF	FARAK	-	155 (158.1)	-	4.8	-	FL90	-	RNAV1

## FARAK 6B

## REMARK

Minimum climb gradient 7.5%(456 ft/NM) until passing 3000ft

Path Terminator	Waypoint Identifier	Fly Over	Course °M(°T)	Magnetic Variation	Distance (NM)	Turn Direction	Altitude (ft)	Speed Limit (kt)	Navigation Specification
CA	-	-	346 (349.0)	-	-	-	1200	-	RNAV1
DF	MC622	-	-	-	-	-	1800	210	RNAV1
TF	MC626	-	308 (310.8)	-	3.0	-	3100	-	RNAV1
TF	MC629	-	308 (310.8)	-	2.4	-	-	-	RNAV1
TF	NELAB	-	227 (230.1)	-	9.7	L	TRL	220	RNAV1
TF	FARAK	-	155 (158.1)	-	4.8	-	FL90	-	RNAV1

**FARAK 6N****REMARK****Minimum climb gradient 7.5% (456 ft/NM) until passing TRL**

Path Terminator	Waypoint Identifier	Fly Over	Course °M(°T)	Magnetic Variation	Distance (NM)	Turn Direction	Altitude (ft)	Speed Limit (kt)	Navigation Specification
CA	-	-	346 (349.0)	-	-	-	1200	-	RNAV1
CF	MC627	-	278 (280.8)	3°	-	-	4500	200	RNAV1
TF	MC631	-	278 (280.8)	-	1.7	-	-	-	RNAV1
TF	NELAB	-	227 (230.0)	-	4.3	-	TRL	210	RNAV1
TF	FARAK	-	155 (158.1)	-	4.8	-	FL90	-	RNAV1

**IBCUC 6A****REMARK****Minimum climb gradient 7.5% (456 ft/NM) until passing 3000ft**

Path Terminator	Waypoint Identifier	Fly Over	Course °M(°T)	Magnetic Variation	Distance (NM)	Turn Direction	Altitude (ft)	Speed Limit (kt)	Navigation Specification
CA	-	-	346 (349.0)	-	-	-	1200	-	RNAV1
DF	MC623	-	-	-	-	-	1800	210	RNAV1
TF	MC624	-	318 (320.9)	-	3.0	-	3000	-	RNAV1
TF	MC628	-	318 (320.9)	-	2.3	-	-	-	RNAV1
TF	NELAB	-	227 (230.1)	-	11.2	L	TRL	220	RNAV1
TF	MC633	-	235 (238.2)	-	9.2	-	FL100	-	RNAV1
TF	IBCUC	-	235 (238.0)	-	6.0	-	FL120	-	RNAV1

**IBCUC 6B****REMARK****Minimum climb gradient 7.5%(456 ft/NM) until passing 3000ft**

Path Terminator	Waypoint Identifier	Fly Over	Course °M(°T)	Magnetic Variation	Distance (NM)	Turn Direction	Altitude (ft)	Speed Limit (kt)	Navigation Specification
CA	-	-	346 (349.0)	-	-	-	1200	-	RNAV1
DF	MC622	-	-	-	-	-	1800	210	RNAV1
TF	MC626	-	308 (310.8)	-	3.0	-	3100	-	RNAV1
TF	MC629	-	308 (310.8)	-	2.3	-	-	-	RNAV1
TF	NELAB	-	227 (230.1)	-	9.7	L	TRL	220	RNAV1
TF	MC633	-	235 (238.2)	-	9.2	-	FL100	-	RNAV1
TF	IBCUC	-	235 (238.0)	-	6.0	-	FL120	-	RNAV1

**IBCUC 6N****REMARK****Minimum climb gradient 7.5% (456 ft/NM) until passing TRL**

Path Terminator	Waypoint Identifier	Fly Over	Course °M(°T)	Magnetic Variation	Distance (NM)	Turn Direction	Altitude (ft)	Speed Limit (kt)	Navigation Specification
CA	-	-	346 (349.0)	-	-	-	1200	-	RNAV1
CF	MC627	-	278 (280.8)	3°	-	-	4500	200	RNAV1
TF	MC631	-	278 (280.8)	-	1.7	-	-	-	RNAV1
TF	NELAB	-	227 (230.0)	-	4.3	-	TRL	210	RNAV1
TF	MC633	-	235 (238.2)	-	9.2	-	FL100	-	RNAV1
TF	IBCUC	-	235 (238.0)	-	6.0	-	FL120	-	RNAV1

**IRKED 7A****REMARK****Minimum climb gradient 7.5% (456 ft/NM) until passing 6000 ft.**

Path Terminator	Waypoint Identifier	Fly Over	Course °M(°T)	Magnetic Variation	Distance (NM)	Turn Direction	Altitude (ft)	Speed Limit (kt)	Navigation Specification
CA	-	-	346 (349.0)	-	-	-	1200	-	RNAV1
DF	MC623	-	-	-	-	-	1800	210	RNAV1
CF	MC624	Y	318 (320.9)	3°	3.0	-	3000	-	RNAV1
DF	MC632	-	-	-	-	R	4000 (1)	220	RNAV1
TF	IRKED	-	123 (125.8)	-	6.9	-	6000	-	RNAV1

(1) +6000FT ATC discretion

**NELAB 6A****REMARK****Minimum climb gradient 8% (486 ft/NM) until FL135.**

Path Terminator	Waypoint Identifier	Fly Over	Course °M(°T)	Magnetic Variation	Distance (NM)	Turn Direction	Altitude (ft)	Speed Limit (kt)	Navigation Specification
CA	-	-	346 (349.0)	-	-	-	1200	-	RNAV1
DF	MC623	-	-	-	-	-	1800	210	RNAV1
TF	MC624	-	318 (320.9)	-	3.0	-	3000	-	RNAV1
TF	MC628	-	318 (320.9)	-	2.3	-	-	-	RNAV1
TF	NELAB	-	227 (230.1)	-	11.2	L	FL110	220	RNAV1

**NELAB 6B****REMARK****Minimum climb gradient 8% (486 ft/NM) until FL135.**

Path Terminator	Waypoint Identifier	Fly Over	Course °M(°T)	Magnetic Variation	Distance (NM)	Turn Direction	Altitude (ft)	Speed Limit (kt)	Navigation Specification
CA	-	-	346 (349.0)	-	-	-	1200	-	RNAV1
DF	MC622	-	-	-	-	-	1800	210	RNAV1
TF	MC626	-	308 (310.8)	-	3.0	-	3100	-	RNAV1
TF	MC629	-	308 (310.8)	-	2.4	-	-	-	RNAV1
TF	NELAB	-	227 (230.1)	-	9.7	L	FL110	220	RNAV1

**NELAB 6N****REMARK****Minimum climb gradient 8% (486 ft/NM) until FL135.**

Path Terminator	Waypoint Identifier	Fly Over	Course °M(°T)	Magnetic Variation	Distance (NM)	Turn Direction	Altitude (ft)	Speed Limit (kt)	Navigation Specification
CA	-	-	346 (349.0)	-	-	-	1200	-	RNAV1
CF	MC627	-	278 (280.8)	3°	-	-	4500	200	RNAV1
TF	MC631	-	278 (280.8)	-	1.7	-	-	-	RNAV1
TF	NELAB	-	227 (230.0)	-	4.3	-	FL110	210	RNAV1

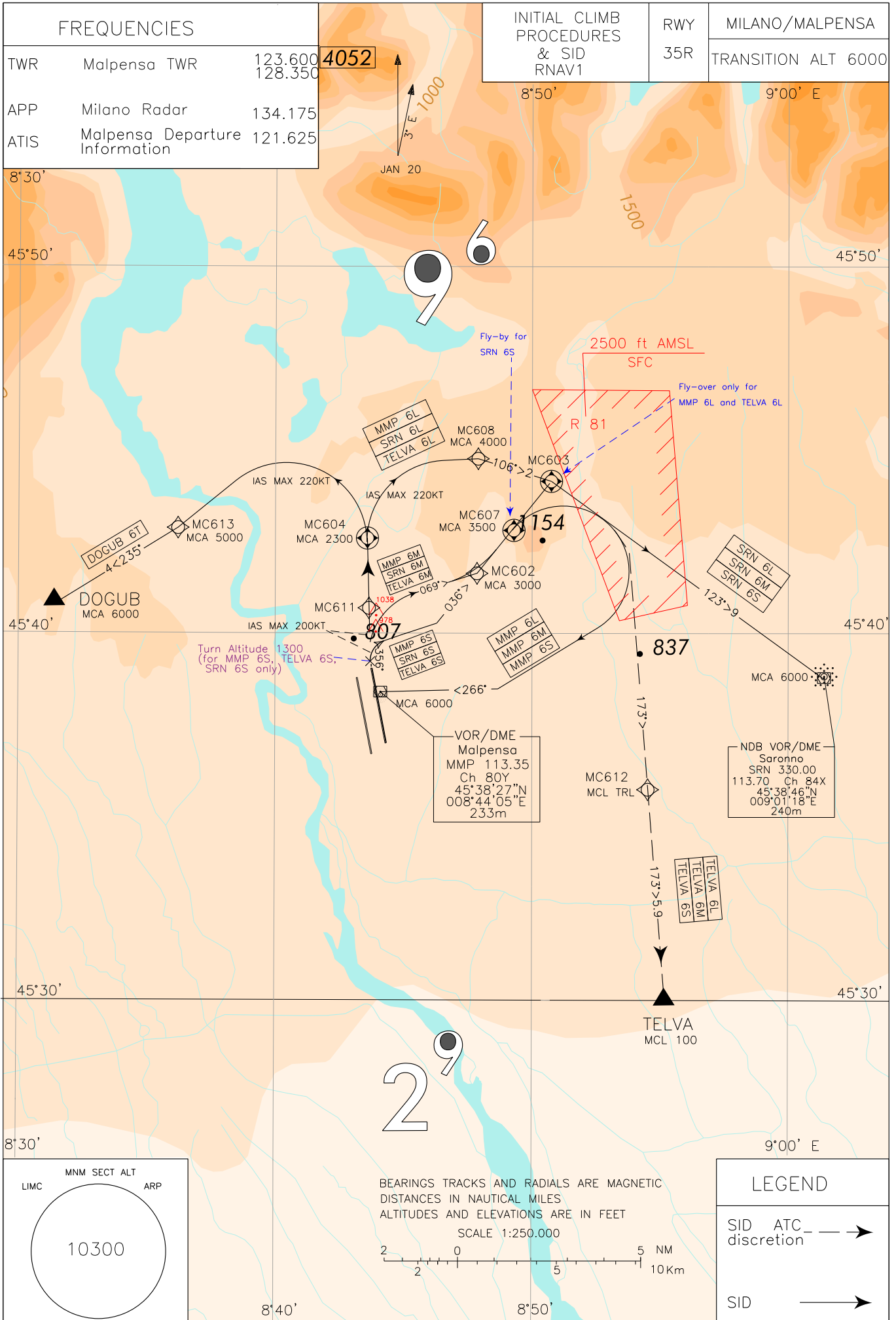
**USE OF AERODROME BY AIRCRAFT CHAPTER 2 ANNEX 16 ICAO.**

Aircraft Chapter 2 Annex 16 ICAO cannot use Milano/Malpensa airport, except for emergency.

**WAYPOINT LIST**

Waypoint Identifier	Coordinates
MC622	45°40'24.75" N 008°40'51.76" E
MC623	45°40'46.62" N 008°41'23.84" E
MC624	45°43'06.39" N 008°38'42.04" E
MC626	45°42'22.69" N 008°37'37.78" E
MC627	45°40'09.03" N 008°31'29.98" E
MC628	45°44'53.09" N 008°36'37.98" E
MC629	45°43'56.98" N 008°35'02.00" E
MC631	45°40'28.30" N 008°29'05.87" E
MC632	45°47'28.25" N 008°44'05.96" E
MC633	45°32'50.13" N 008°13'16.41" E





## NOISE ABATEMENT PROCEDURES RWY 35R

## SID DESCRIPTION RWY 35R

## REMARK

SID MMP 6S, SRN 6S, TELVA 6S only for ACFT cat. A/B/C.

## WARNING

There are close-in obstacles penetrating OIS 2.5% but they were not considered for the published procedure design gradient (see ICAO Obstacle Charts and NOTAM in force).

## DOGUB 6T

## REMARK

Minimum climb gradient 7.41% (450 ft/NM) until passing 3000 ft.

Path Terminator	Waypoint Identifier	Fly Over	Course °M(°T)	Magnetic Variation	Distance (NM)	Turn Direction	Altitude (ft)	Speed Limit (kt)	Navigation Specification
CA	-	-	346 (349.0)	-	-	-	1162	-	RNAV1
CF	MC604	Y	356 (359.0)	3	-	-	2300	-	RNAV1
DF	MC613	-	-	-	-	L	5000	- 220	RNAV1
TF	DOGUB	-	235 (238.1)	-	4.3	-	6000	-	RNAV1

## MMP 6L

## REMARK

Minimum climb gradient 7.41% (450 ft/NM) until passing 3000 ft.

Path Terminator	Waypoint Identifier	Fly Over	Course °M(°T)	Magnetic Variation	Distance (NM)	Turn Direction	Altitude (ft)	Speed Limit (kt)	Navigation Specification
CA	-	-	346 (349.0)	-	-		1162	-	RNAV1
CF	MC604	Y	356 (359.0)	3	-		2300		RNAV1
DF	MC608	-	-	-	-	R	4000	- 220	RNAV1
TF	MC603	Y	106 (108.9)	-	2.0	-	-	-	RNAV1
CF	MMP	-	266 (268.6)	3	-	R	6000	- 230	RNAV1

## MMP 6M

## REMARK

Minimum climb gradient 7.41% (450 ft/NM) until passing 3000 ft.

Path Terminator	Waypoint Identifier	Fly Over	Course °M(°T)	Magnetic Variation	Distance (NM)	Turn Direction	Altitude (ft)	Speed Limit (kt)	Navigation Specification
CA	-	-	346 (349.0)	-	-	-	1162	-	RNAV1
CA	-	-	356 (359.0)	-	-	-	1300	-	RNAV1
CF	MC611	-	356 (359.0)	3	-	-	-	-	RNAV1
TF	MC602	-	069 (072.2)	-	3.1	-	3000	- 200	RNAV1
CF	MC607	Y	036 (039.2)	3	1.5	-	3500	-	RNAV1
CF	MMP	-	266 (268.6)	3	-	R	6000	- 220	RNAV1

**MMP 6S****REMARK**

Minimum climb gradient 7.41% (450 ft/NM) until passing 4000 ft, then 5.76% (350 ft/NM).

Path Terminator	Waypoint Identifier	Fly Over	Course °M(°T)	Magnetic Variation	Distance (NM)	Turn Direction	Altitude (ft)	Speed Limit (kt)	Navigation Specification
CA	-	-	346 (349.0)	-	-	-	1162	-	RNAV1
CA	-	-	356 (359.0)	-	-	-	1300	-	RNAV1
CF	MC607	Y	036 (039.2)	3	-	-	3500	- 200	RNAV1
CF	MMP	-	266 (268.6)	3	-	R	6000	- 220	RNAV1

**SRN 6L****REMARK**

Minimum climb gradient 7.41% (450 ft/NM) until passing 3000 ft.

Path Terminator	Waypoint Identifier	Fly Over	Course °M(°T)	Magnetic Variation	Distance (NM)	Turn Direction	Altitude (ft)	Speed Limit (kt)	Navigation Specification
CA	-	-	346 (349.0)	-	-	-	1162	-	RNAV1
CF	MC604	Y	356 (359.0)	3	-	-	2300	-	RNAV1
DF	MC608	-	-	-	-	R	4000	- 220	RNAV1
TF	MC603	-	106 (108.9)	-	2.0	-	-	-	RNAV1
TF	SRN	-	123 (125.8)	-	9.3	-	6000	- 230	RNAV1

**SRN 6M****REMARK**

Minimum climb gradient 7.41% (450 ft/NM) until passing 3000 ft.

Path Terminator	Waypoint Identifier	Fly Over	Course °M(°T)	Magnetic Variation	Distance (NM)	Turn Direction	Altitude (ft)	Speed Limit (kt)	Navigation Specification
CA	-	-	346 (349.0)	-	-	-	1162	-	RNAV1
CA	-	-	356 (359.0)	-	-	-	1300	-	RNAV1
CF	MC611	-	356 (359.0)	-	-	-	-	-	RNAV1
TF	MC602	-	069 (072.2)	-	3.1	-	3000	- 200	RNAV1
TF	MC603	-	036 (039.0)	-	3.2	-	-	-	RNAV1
TF	SRN	-	123 (125.8)	-	9.3	-	6000	- 220	RNAV1

**SRN 6S****REMARK****Minimum climb gradient 7.41% (450 ft/NM) until passing 3000 ft.**

Path Terminator	Waypoint Identifier	Fly Over	Course °M(°T)	Magnetic Variation	Distance (NM)	Turn Direction	Altitude (ft)	Speed Limit (kt)	Navigation Specification
CA	-	-	346 (349.0)	-	-	-	1162	-	RNAV1
CA	-	-	356 (359.0)	-	-	-	1300	-	RNAV1
CF	MC607	-	036 (039.2)	3	-	-	3500	- 200	RNAV1
TF	MC603	-	036 (038.9)	-	1.6	-	-	-	RNAV1
TF	SRN	-	123 (125.8)	-	9.3	-	6000	- 220	RNAV1

**TELVA 6L (ATC discretion)****REMARK****Minimum climb gradient 7.41% (450 ft/NM) until passing 3000 ft.**

Path Terminator	Waypoint Identifier	Fly Over	Course °M(°T)	Magnetic Variation	Distance (NM)	Turn Direction	Altitude (ft)	Speed Limit (kt)	Navigation Specification
CA	-	-	346 (349.0)	-	-	-	1162	-	RNAV1
CF	MC604	Y	356 (359.0)	3	-	-	2300	-	RNAV1
DF	MC608	-	-	-	-	R	4000	220	RNAV1
TF	MC603	Y	106 (108.9)	-	2.0	-	-	-	RNAV1
CF	MC612	-	173 (175.5)	3	-	-	TRL	- 230	RNAV1
TF	TELVA	-	173 (175.5)	-	5.9	-	FL100	-	RNAV1

**TELVA 6M (ATC discretion)****REMARK****Minimum climb gradient 7.41% (450 ft/NM) until passing 3000 ft.**

Path Terminator	Waypoint Identifier	Fly Over	Course °M(°T)	Magnetic Variation	Distance (NM)	Turn Direction	Altitude (ft)	Speed Limit (kt)	Navigation Specification
CA	-	-	346 (349.0)	-	-	-	1162	-	RNAV1
CA	-	-	356 (359.0)	-	-	-	1300	-	RNAV1
CF	MC611	-	356 (359.0)	3	-	-	-	-	RNAV1
TF	MC602	-	069 (072.2)	-	3.1	-	3000	- 200	RNAV1
CF	MC607	Y	036 (039.2)	3	1.5	-	3500	-	RNAV1
CF	MC612	-	173 (175.5)	3	-	R	TRL	- 220	RNAV1
TF	TELVA	-	173 (175.5)	-	5.9	-	FL100	-	RNAV1

**TELVA 6S (ATC discretion)****REMARK**

Minimum climb gradient 7.41% (450 ft/NM) until passing 4000 ft, then 5.76% (350 ft/NM).

Path Terminator	Waypoint Identifier	Fly Over	Course °M(°T)	Magnetic Variation	Distance (NM)	Turn Direction	Altitude (ft)	Speed Limit (kt)	Navigation Specification
CA	-	-	346 (349.0)	-	-	-	1162	-	RNAV1
CA	-	-	356 (359.0)	-	-	-	1300	-	RNAV1
CF	MC607	Y	036 (039.2)	3	1.5	-	3500	-	RNAV1
CF	MC612	-	173 (175.5)	3	-	R	TRL	- 220	RNAV1
TF	TELVA	-	173 (175.5)	-	5.9	-	FL100	-	RNAV1

**USE OF AERODROME BY AIRCRAFT CHAPTER 2 ANNEX 16 ICAO**

Aircraft Chapter 2 Annex 16 ICAO cannot use Milano/Malpensa airport, except for emergency.

**WAYPOINT LIST**

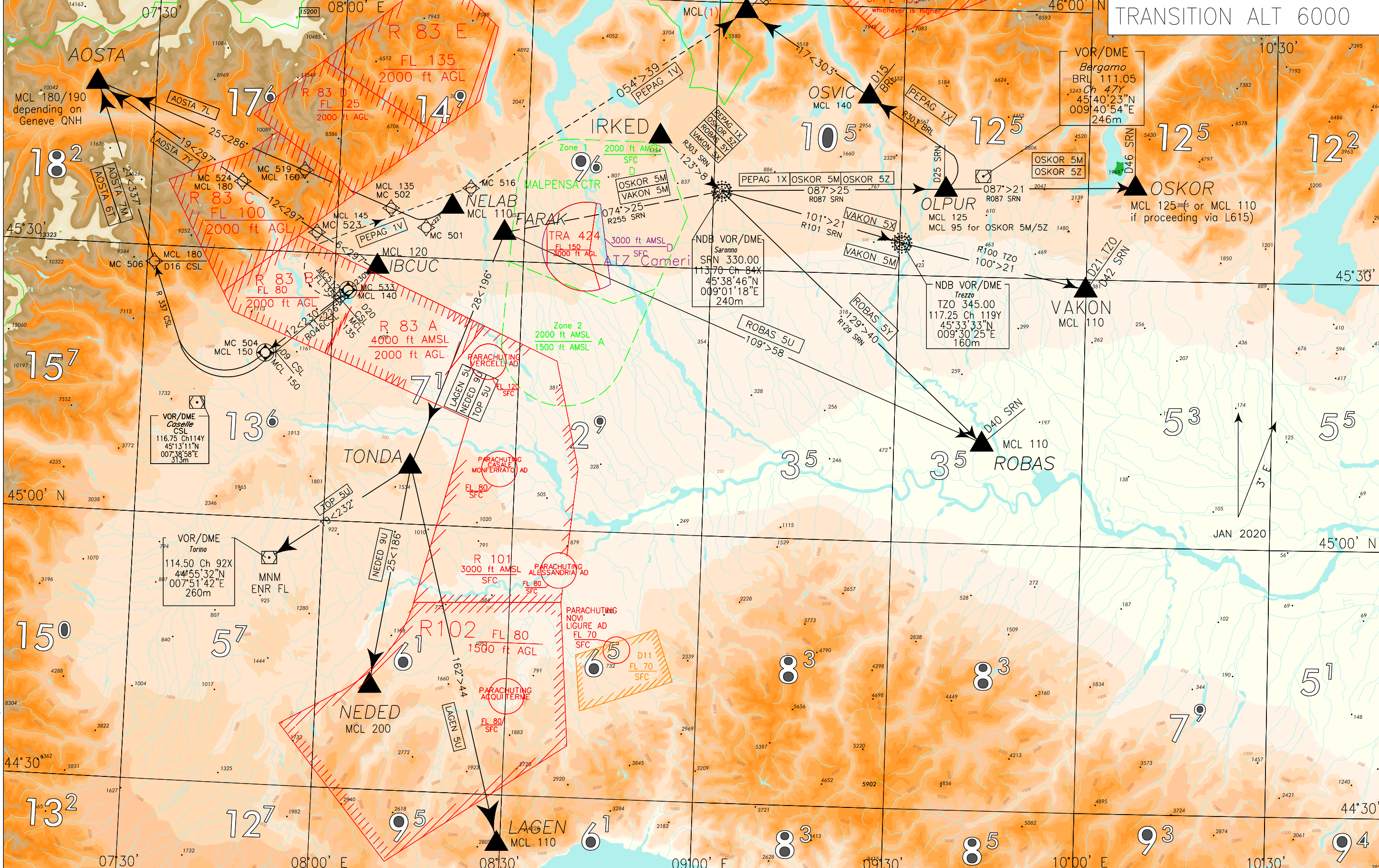
Waypoint Identifier	Coordinates
MC602	45°41'41.23" N 008°47'50.28" E
MC603	45°44'08.61" N 008°50'40.95" E
MC604	45°42'32.03" N 008°43'34.15" E
MC607	45°42'51.59" N 008°49'12.24" E
MC608	45°44'48.75" N 008°47'53.80" E
MC611	45°40'44.30" N 008°43'36.77" E
MC612	45°35'47.48" N 008°54'30.60" E
MC613	45°42'55.09" N 008°36'12.45" E

FREQUENCIES	
TWR Malpensa TWR	128.350
35L/17R	
APP Milano Radar	134.175
ATIS Milano Departure Information	121.625

LEGEND	
ATC discretion	----->
SCALE	1:750.000
REMARK (1)	MCL140/150 depending on Zurich QNH

MILANO/MALPENSA  
TRANSITION SEGMENTS  
TO ENROUTE  
RWY 35L  
TRANSITION ALT 6000

CHANGE: BEG VOR/DME DISMISSED - BRL VOR/DME IMPLEMENTED - ABESI 7V/8X AND CANNE 7V/8X WITHDRAWN - PEPAG 1V/1X IMPLEMENTED



**TRANSITION SEGMENTS TO ENROUTE DESCRIPTION  
RWY 35L**

**AOSTA 7L**

Path Terminator	Waypoint Identifier	Fly Over	Course °M(°T)	Magnetic Variation	Distance (NM)	Turn Direction	Altitude (ft)	Speed Limit (kt)	Navigation Specification
IF	NELAB	-	-	-	-	-	FL 110	-	RNAV1
TF	MC501	-	227 (230.1)	-	5.0	-	-	-	RNAV1
TF	MC502	-	286 (288.4)	-	3.2	-	FL135	-	RNAV1
TF	MC519	-	286 (288.3)	-	14.6	-	FL 160	-	RNAV1
TF	AOSTA	-	285 (288.1)	-	25.1	-	FL180/190*	-	RNAV1

\* MCL: FL 180/190 in dipendenza di Ginevra QNH/depending on Geneve QNH

**AOSTA 7M**

Path Terminator	Waypoint Name	Fly Over	Course °M(°T)	Magnetic Variation	Distance (NM)	Turn Direction	Altitude (ft)	Speed Limit (kt)	Navigation Specification
IF	IBCUC	-	-	-	-	-	FL120	-	RNAV1
TF	MC512	-	230 (232.7)	-	5.0	-	FL135	-	RNAV1
TF	MC504	Y	230 (232.7)	-	12.0	-	FL150	-	RNAV1
CF	MC506	-	337 (339.8)	3°	-	R	FL180	-	RNAV1
TF	AOSTA	-	337 (339.8)	-	20.9	-	FL180/190*	-	RNAV1

\* MCL FL180/190 depending on Geneve QNH

**AOSTA 6T**

From IBCUC proceed on TR 226° (RDL 046 CSL VOR), at 9NM CSL DME turn right until joining RDL 337 CSL VOR to AOSTA (RDL 337/37 NM CSL VOR/DME).

MCL: IBCUC, FL120; RDL046/20NM CSL VOR/DME, FL135; RDL046/9NM CSL VOR/DME FL150; RDL 337/16NM CSL VOR/DME, FL 180; AOSTA \*

\* MCL FL180/190 depending on Geneve QNH

**AOSTA 7Y**

Path Terminator	Waypoint Name	Fly Over	Course °M(°T)	Magnetic Variation	Distance (NM)	Turn Direction	Altitude (ft)	Speed Limit (kt)	Navigation Specification
IF	IBCUC	-	-	-	-	-	FL120	-	RNAV1
TF	MC523	-	297 (300.0)	-	6.0	-	FL145	-	RNAV1
TF	MC524	-	297 (299.9)	-	12.0	-	FL180	-	RNAV1
TF	AOSTA	-	297 (299.7)	-	18.6	-	FL180/190*	-	RNAV1

**LAGEN 5U**

Path Terminator	Waypoint Name	Fly Over	Course °M(°T)	Magnetic Variation	Distance (NM)	Turn Direction	Altitude (ft)	Speed Limit (kt)	Navigation Specification
IF	FARAK	-	-	-	-	-	-	-	RNAV 1
TF	TONDA	-	196 (199.2)	-	28.3	-	-	-	RNAV 1
TF	LAGEN	-	162 (164.9)	-	44.4	-	FL110	-	RNAV 1

**NEDED 9U**

Path Terminator	Waypoint Name	Fly Over	Course °M(°T)	Magnetic Variation	Distance (NM)	Turn Direction	Altitude (ft)	Speed Limit (kt)	Navigation Specification
IF	FARAK	-	-	-	-	-	-	-	RNAV 1
TF	TONDA	-	196 (199.2)	-	28.3	-	-	-	RNAV 1
TF	NEDED	-	186 (188.7)	-	25.2	-	FL200	-	RNAV 1



**OSKOR 5M (ATC discretion)**

FARAK proceed on TR 074° (RDL 255 SRN VOR) to SRN VOR/DME, then turn left on RDL 087 SRN VOR (TR087°) to OLPUR, then continue on TR087° (RDL 087 SRN VOR) direct to OSKOR (RDL 087/46 SRN VOR/DME).

MCL: OLPUR, FL95; OSKOR, \*

Path Terminator	Waypoint Identifier	Fly Over	Course °M(°T)	Magnetic Variation	Distance (NM)	Turn Direction	Altitude (ft)	Speed Limit (kt)	Navigation Specification
IF	FARAK	-	-	-	-	-	-	-	RNAV 1
TF	SRN	-	074 (076.9)	-	24.7	-	-	-	RNAV 1
TF	OLPUR	-	087 (089.5)	-	25.1	-	FL95	-	RNAV 1
TF	OSKOR	-	087 (089.7)	-	20.9	-	FL125/110*	-	RNAV 1

\* FL125 (or FL110 if proceeding via L615)

**OSKOR 5Z**

IRKED proceed on TR 123° (RDL 303 SRN VOR) to SRN VOR/DME, then turn left on RDL 087 SRN VOR (TR087°) to OLPUR (RDL/QDR 087/25 NM SRN VOR NDB/DME), then continue on RDL 087 SRN VOR (TR087°) direct to OSKOR (RDL 087/46 SRN VOR/DME).

MCL: OLPUR, FL95; OSKOR, \*

Path Terminator	Waypoint Identifier	Fly Over	Course °M(°T)	Magnetic Variation	Distance (NM)	Turn Direction	Altitude (ft)	Speed Limit (kt)	Navigation Specification
IF	IRKED	-	-	-	-	-	-	-	RNAV 1
TF	SRN	-	123 (125.8)	-	8.0	-	-	-	RNAV 1
TF	OLPUR	-	087 (089.5)	-	25.1	-	FL95	-	RNAV 1
TF	OSKOR	-	087 (089.7)	-	20.9	-	FL125/110*	-	RNAV 1

\* FL125 (or FL110 if proceeding via L615)

**PEPAG 1V (ATC discretion)**

Path Terminator	Waypoint Identifier	Fly Over	Course °M(°T)	Magnetic Variation	Distance (NM)	Turn Direction	Altitude (ft)	Speed Limit (kt)	Navigation Specification
IF	IBCUC	-	-	-	-	-	FL120	-	RNAV1
CF	MC533	Y	230 (232.7)	3°	4.0	-	FL140	-	RNAV1
DF	MC516	-	-	-	-	R	-	250	RNAV1
TF	PEPAG	-	054 (57.2)	-	39.0	-	FL140/150*	-	RNAV1

\* MCL: FL140/150 depending on Zurich QNH

**PEPAG 1X**

IRKED proceed on TR 123° (RDL/QDR 303 SRN VOR NDB) to SRN VOR NDB/DME , then turn left on TR 087° (RDL/QDR 087 SRN VOR NDB) to OLPUR (RDL/QDR 087/25 NM SRN VOR NDB/DME), then turn left to join and follow RDL 303 BRL VOR (TR 303°) and proceed via OSVIC (RDL 303/15 NM BRL VOR/DME) direct to PEPAG (RDL 303/32 NM BRL VOR/DME).

MCL: OLPUR, FL125; OSVIC, FL140; PEPAG, FL140/150\*

\* MCL: FL140/150 depending on Zurich QNH

Path Terminator	Waypoint Name	Fly Over	Course °M(°T)	Magnetic Variation	Distance (NM)	Turn Direction	Altitude (ft)	Speed Limit (kt)	Navigation Specification
IF	IRKED	-	-	-	-	-	-	-	RNAV 1
TF	SRN	-	123 (125.8)	-	8.0	-	-	-	RNAV 1
TF	OLPUR	Y	087 (089.5)	-	25.1	-	FL125	-	RNAV 1
CF	OSVIC	-	303 (306.3)	3°	-	L	FL140	-	RNAV 1
TF	PEPAG	-	303 (306.3)	-	16.5	-	FL140/150*	-	RNAV 1

\*FL140/150 depending on Zurich QNH

**ROBAS 5Y**

IRKED proceed on TR 123° (RDL 303 SRN VOR) to SRN VOR/DME, then proceed on TR 129° (RDL 129 SRN VOR) direct to ROBAS (RDL 129/40 NM SRN VOR/DME).

MCL: ROBAS, FL110

Path Terminator	Waypoint Identifier	Fly Over	Course °M(°T)	Magnetic Variation	Distance (NM)	Turn Direction	Altitude (ft)	Speed Limit (kt)	Navigation Specification
IF	IRKED	-	-	-	-	-	-	-	RNAV1
TF	SRN	-	123 (125.8)	-	8.0	-	-	-	RNAV1
TF	ROBAS	-	129 (132.1)	-	40.3	-	FL110	-	RNAV1

**ROBAS 5U**

Path Terminator	Waypoint Identifier	Fly Over	Course °M(°T)	Magnetic Variation	Distance (NM)	Turn Direction	Altitude (ft)	Speed Limit (kt)	Navigation Specification
IF	FARAK	-	-	-	-	-	-	-	RNAV1
TF	ROBAS	-	109 (111.4)	-	58.2	-	FL110	-	RNAV1

**TOP 5U**

Path Terminator	Waypoint Identifier	Fly Over	Course °M(°T)	Magnetic Variation	Distance (NM)	Turn Direction	Altitude (ft)	Speed Limit (kt)	Navigation Specification
IF	FARAK	-	-	-	-	-	-	-	RNAV1
TF	TONDA	-	196 (199.2)	-	28.3	-	-	-	RNAV1
TF	TOP	-	232 (235.0)	-	19.2	-	MNM ENR FL *	-	RNAV1

\* according to the next ATS route segment

**VAKON 5M (ATC discretion)**

FARAK proceed on TR 074° (RDL/QDR 255° SRN VOR NDB) to SRN VOR NDB/DME, then continue on TR 101° (RDL /QDR 101° SRN VOR/NDB or RDL/QDR 282 TZO VOR NDB) to TZO VOR NDB, then TR 100° (RDL/QDR 100° TZO VOR NDB or RDL 101 SRN VOR) direct to VAKON (RDL/QDR 100/21 NM TZO VOR NDB/DME or RDL 101/42 SRN VOR/DME).

MCL: VAKON, FL110

Path Terminator	Waypoint Identifier	Fly Over	Course °M(°T)	Magnetic Variation	Distance (NM)	Turn Direction	Altitude (ft)	Speed Limit (IAS)	Navigation Specification
IF	FARAK	-	-	-	-	-	-	-	RNAV 1
TF	SRN	-	074 (076.9)	-	24.7	-	-	-	RNAV 1
TF	TZO	-	101 (104.1)	-	21.1	-	-	-	RNAV 1
TF	VAKON	-	100 (103.0)	-	21.4	-	FL110	-	RNAV 1

**VAKON 5X**

IRKED proceed on TR 123° (RDL/QDR 303 SRN VOR NDB) to SRN VOR NDB/DME, then continue on TR 101° (RDL/QDR 101 SRN VOR NDB or RDL/QDR 282 TZO VOR NDB) to TZO VOR NDB, then TR 100° (RDL/QDR 100 TZO VOR NDB or RDL 101 SRN VOR) direct to VAKON (RDL/QDR 100/21 NM TZO VOR NDB/DME or RDL 101/42 SRN VOR/DME).

MCL: VAKON, FL110

Path Terminator	Waypoint Identifier	Fly Over	Course °M(°T)	Magnetic Variation	Distance (NM)	Turn Direction	Altitude (ft)	Speed Limit (kt)	Navigation Specification
IF	IRKED	-	-	-	-	-	-	-	RNAV 1
TF	SRN	-	123 (125.8)	-	24.7	-	-	-	RNAV 1
TF	TZO	-	101 (104.1)	-	21.1	-	-	-	RNAV 1
TF	VAKON	-	100 (103.0)	-	21.4	-	FL110	-	RNAV 1

**WAYPOINT LIST**

Waypoint Identifier	Coordinates
MC501	45°34'29.38" N 008°18'56.27" E
MC502	45°35'29.06" N 008°14'40.42" E
MC504	45°19'20.19" N 007°46'50.95" E
MC506	45°28'10.75" N 007°31'04.23" E
MC511	45°00'14.63" N 009°50'55.83" E
MC512	45°26'37.34" N 008°00'22.54" E
MC533	45°27'13.87" N 008°01'30.64" E
MC514	45°38'02.49" N 008°15'22.94" E
MC516	45°38'04.59" N 008°17'14.59" E
MC519	45°40'03.71" N 007°54'52.02" E
MC523	45°32'39.02" N 007°58'38.15" E
MC524	45°38'36.98" N 007°43'48.21" E

Intenzionalmente bianca

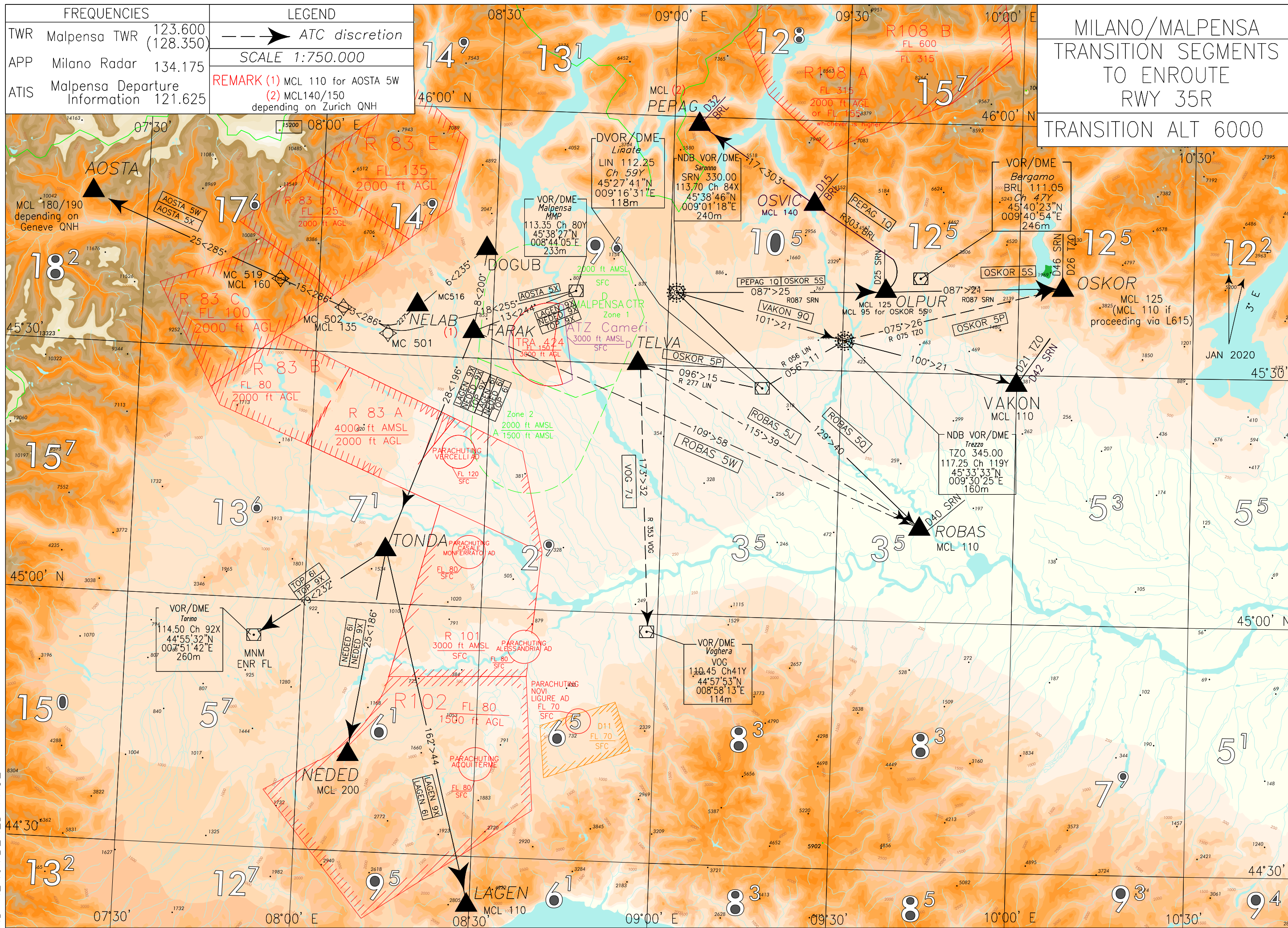
*Intentionally left blank*

FREQUENCIES	
TWR	Malpensa TWR 123.600 (128.350)
APP	Milano Radar 134.175
ATIS	Malpensa Departure Information 121.625

LEGEND	
---	ATC discretion
SCALE 1:750.000	
REMARK (1) MCL 110 for AOSTA 5W	
(2) MCL140/150 depending on Zurich QNH	

MILANO/MALPENSA  
TRANSITION SEGMENTS  
TO ENROUTE  
RWY 35R  
TRANSITION ALT 6000

CHANGE: BEG VOR/DME DISMISSED - BRL VOR/DME IMPLEMENTED - ABESI 5Q AND CANNE 5Q WITHDRAWN - PEPAG 1Q IMPLEMENTED AND RENUMBERED PAGE



## TRANSITION SEGMENT TO ENROUTE DESCRIPTION RWY 35R



## AOSTA 5X

Path Terminator	Waypoint Name	Fly Over	Course °M(°T)	Magnetic Variation	Distance (NM)	Turn Direction	Altitude (ft)	Speed Limit (kt)	Navigation Specification
IF	MMP	-	-	-	-	-	-	-	RNAV1
TF	MC501	-	255 (257.5)	-	18.1	-	-	-	RNAV1
TF	MC502	-	286 (288.4)	-	3.2	-	FL135	-	RNAV1
TF	MC519	-	286 (288.3)	-	14.6	-	FL160	-	RNAV1
TF	AOSTA	-	285 (288.1)	-	25.1	-	FL180/190*	-	RNAV1

\* MCL 180/190 depending on Geneve QNH

## AOSTA 5W

Path Terminator	Waypoint Name	Fly Over	Course °M(°T)	Magnetic Variation	Distance (NM)	Turn Direction	Altitude (ft)	Speed Limit (kt)	Navigation Specification
IF	DOGUB	-	-	-	-	-	-	-	RNAV1
TF	NELAB	-	235 (237.6)	-	5.8	-	FL110	-	RNAV1
TF	MC501	-	227 (230.1)	-	5.0	-	-	-	RNAV1
TF	MC502	-	286 (288.4)	-	3.2	-	FL135	-	RNAV1
TF	MC519	-	286 (288.3)	-	14.6	-	FL160	-	RNAV1
TF	AOSTA	-	285 (288.1)	-	25.1	-	FL180/190*	-	RNAV1

\* MCL 180/190 depending on Geneve QNH



## LAGEN 6I

Path Terminator	Waypoint Name	Fly Over	Course °M(°T)	Magnetic Variation	Distance (NM)	Turn Direction	Altitude (ft)	Speed Limit (kt)	Navigation Specification
IF	DOGUB	-	-	-	-	-	-	-	RNAV 1
TF	FARAK	-	200 (202.3)	-	8.2	-	-	-	RNAV 1
TF	TONDA	-	196 (199.2)	-	28.3	-	-	-	RNAV 1
TF	LAGEN	-	162 (164.9)	-	44.4	-	FL110	-	RNAV 1

## LAGEN 9X

Path Terminator	Waypoint Name	Fly Over	Course °M(°T)	Magnetic Variation	Distance (NM)	Turn Direction	Altitude (ft)	Speed Limit (kt)	Navigation Specification
IF	MMP	-	-	-	-	-	-	-	RNAV 1
TF	FARAK	-	244 (246.8)	-	13.1	-	-	-	RNAV 1
TF	TONDA	-	196 (199.2)	-	28.3	-	-	-	RNAV 1
TF	LAGEN	-	162 (164.9)	-	44.4	-	FL110	-	RNAV 1

## NEDED 6I

Path Terminator	Waypoint Name	Fly Over	Course °M(°T)	Magnetic Variation	Distance (NM)	Turn Direction	Altitude (ft)	Speed Limit (kt)	Navigation Specification
IF	DOGUB	-	-	-	-	-	-	-	RNAV 1
TF	FARAK	-	200 (202.3)	-	8.2	-	-	-	RNAV 1
TF	TONDA	-	196 (199.2)	-	28.3	-	-	-	RNAV 1
TF	NEDED	-	186 (188.7)	-	25.2	-	FL200	-	RNAV 1

## NEDED 9X

Path Terminator	Waypoint Name	Fly Over	Course °M(°T)	Magnetic Variation	Distance (NM)	Turn Direction	Altitude (ft)	Speed Limit (kt)	Navigation Specification
IF	MMP	-	-	-	-	-	-	-	RNAV 1
TF	FARAK	-	244 (246.8)	-	13.1	-	-	-	RNAV 1
TF	TONDA	-	196 (199.2)	-	28.3	-	-	-	RNAV 1
TF	NEDED	-	186 (188.7)	-	25.2	-	FL200	-	RNAV 1

**OSKOR 5P (ATC discretion)**

TELVA proceed on TR 096° (RDL 277 LIN VOR) to LIN VOR, then turn left and proceed on TR 056° (RDL 056 LIN VOR or RDL/QDR 236° TZO VOR NDB) to TZO VOR NDB, then continue on TR 075° (RDL/QDR 075° TZO VOR NDB) to OSKOR (RDL/QDR 075°/26 NM TZO VOR NDB/DME).

MCL: TELVA, FL 100; OSKOR, \*

Path Terminator	Waypoint Identifier	Fly Over	Course °M(°T)	Magnetic Variation	Distance (NM)	Turn Direction	Altitude (ft)	Speed Limit (kt)	Navigation Specification
IF	TELVA	-	-	-	-	-	FL100	-	RNAV 1
TF	LIN	-	096 (099.1)	-	15.2	-	-	-	RNAV 1
TF	TZO	-	056 (058.9)	-	11.4	-	-	-	RNAV 1
TF	OSKOR	-	075 (077.9)	-	26.2	-	FL125/110*	-	RNAV 1

\* FL125 (or FL110 if proceeding via L615)

**OSKOR 5S**

SRN VOR NDB proceed on TR 087° (RDL 087 SRN VOR) to OLPUR, then continue on TR 087° (RDL 087 SRN VOR) direct to OSKOR (RDL 087/46 NM SRN VOR/DME).

MCL: OLPUR, FL95; OSKOR, FL125/110\*

Path Terminator	Waypoint Identifier	Fly Over	Course °M(°T)	Magnetic Variation	Distance (NM)	Turn Direction	Altitude (ft)	Speed Limit (kt)	Navigation Specification
IF	SRN	-	-	-	-	-	-	-	RNAV 1
TF	OLPUR	-	087 (089.5)	-	25.1	-	FL95	-	RNAV 1
TF	OSKOR	-	087 (089.7)	-	20.9	-	FL125/FL110*	-	RNAV 1

\* FL125 (or FL110 if proceeding via L615)

**PEPAG 1Q**

SRN VOR proceed on TR 087° (RDL/QDR 087 SRN VOR NDB) to OLPUR (RDL/QDR 087/25 NM SRN VOR NDB/DME), then turn left until join and follow RDL 303 BRL VOR (TR 303°) and proceed via OSVIC (RDL 303/15 NM BRL VOR/DME) direct to PEPAG (RDL 303/32 NM BRL VOR/DME).

MCL: OLPUR, FL125; OSVIC, FL140; PEPAG, FL140/150 \*

Path Terminator	Waypoint Name	Fly Over	Course °M(°T)	Magnetic Variation	Distance (NM)	Turn Direction	Altitude (ft)	Speed Limit (kt)	Navigation Specification
IF	SRN	-	-	-	-	-	-	-	RNAV 1
TF	OLPUR	Y	087 (089.5)	-	25.1	-	FL125	-	RNAV 1
CF	OSVIC	-	303 (306.3)	3°	-	L	FL140	-	RNAV 1
TF	PEPAG	-	303 (306.3)	-	16.5	-	FL140/150*	-	RNAV 1

\* FL140/150 depending on Zurich QNH

**ROBAS 5J (ATC discretion)**

Path Terminator	Waypoint Identifier	Fly Over	Course °M(°T)	Magnetic Variation	Distance (NM)	Turn Direction	Altitude (ft)	Speed Limit (kt)	Navigation Specification
IF	TELVA	-	-	-	-	-	FL100	-	RNAV 1
TF	ROBAS	-	115 (118.1)	-	38.8	-	FL110	-	RNAV 1



**ROBAS 5Q**

SRN VOR NDB proceed on TR129° (RDL/QDR 129° SRN VOR NDB) to ROBAS (RDL/QDR 129/40 NM SRN VOR NDB/DME).

MCL: ROBAS, FL110

Path Terminator	Waypoint Identifier	Fly Over	Course °M(°T)	Magnetic Variation	Distance (NM)	Turn Direction	Altitude (ft)	Speed Limit (kt)	Navigation Specification
IF	SRN	-	-	-	-	-	-	-	RNAV 1
TF	ROBAS	-	129 (132.1)	-	40.3	-	FL110	-	RNAV 1

**ROBAS 5W (ATC discretion)**

Path Terminator	Waypoint Identifier	Fly Over	Course °M(°T)	Magnetic Variation	Distance (NM)	Turn Direction	Altitude (ft)	Speed Limit (kt)	Path Terminator
IF	DOGUB	-	-	-	-	-	-	-	RNAV 1
TF	FARAK	-	200 (202.3)	-	8.2	L	-	-	RNAV 1
TF	ROBAS	-	109 (111.4)	-	58.2	-	FL110	-	RNAV 1

**TOP 6I**

Path Terminator	Waypoint Identifier	Fly Over	Course °M(°T)	Magnetic Variation	Distance (NM)	Turn Direction	Altitude (ft)	Speed Limit (kt)	Path Terminator
IF	DOGUB	-	-	-	-	-	-	-	RNAV1
TF	FARAK	-	200 (202.3)	-	8.2	-	-	-	RNAV1
TF	TONDA	-	196 (199.2)	-	28.3	-	-	-	RNAV1
TF	TOP	-	232 (235.0)	-	19.2	-	MNM ENR FL *	-	RNAV1

\* according to the next ATS route segment

## TOP 9X

Path Terminator	Waypoint Identifier	Fly Over	Course °M(°T)	Magnetic Variation	Distance (NM)	Turn Direction	Altitude (ft)	Speed Limit (kt)	Navigation Specification
IF	MMP	-	-	-	-	-	-	-	RNAV 1
TF	FARAK	-	244 (246.8)	-	13.1	-	-	-	RNAV 1
TF	TONDA	-	196 (199.2)	-	28.3	-	-	-	RNAV 1
TF	TOP	-	232 (235.0)	-	19.2	-	MNM ENR FL *	-	RNAV 1

\* according to the next ATS route segment

## VAKON 9Q

SRN VOR proceed on TR 101° (RDL/QDR 101 SRN VOR NDB or RDL/QDR 282 TZO VOR NDB) to TZO VOR NDB, then continue on TR 100° (RDL/QDR 100° TZO VOR NDB or RDL 101 SRN VOR) direct to VAKON (RDL/QDR 100/21 NM TZO VOR NDB/DME or RDL 101/42 SRN VOR/DME).

MCL: VAKON FL110

Path Terminator	Waypoint Identifier	Fly Over	Course °M(°T)	Magnetic Variation	Distance (NM)	Turn Direction	Altitude (ft)	Speed Limit (IAS)	Navigation Specification
IF	SRN	-	-	-	-	-	-	-	RNAV 1
TF	TZO	-	101 (104.1)	-	21.1	-	-	-	RNAV 1
TF	VAKON	-	100 (103.0)	-	21.4	-	FL110	-	RNAV 1

## VOG 7J (ATC discretion)

TELVA proceed on TR 173° (RDL 353 VOG VOR) direct to VOG VOR.

MCL: TELVA FL 100

Path Terminator	Waypoint Identifier	Fly Over	Course °M(°T)	Magnetic Variation	Distance (NM)	Turn Direction	Altitude (ft)	Speed Limit (IAS)	Navigation Specification
IF	TELVA	-	-	-	-	-	FL100	-	RNAV 1
TF	VOG	-	173 (176.1)	-	32.3	-	-	-	RNAV 1

## WAYPOINT LIST

Waypoint Identifier	Coordinates
MC501	45°34'29.38" N 008°18'56.27" E
MC502	45°35'29.06" N 008°14'40.42" E
MC519	45°40'03.71" N 007°54'52.02" E

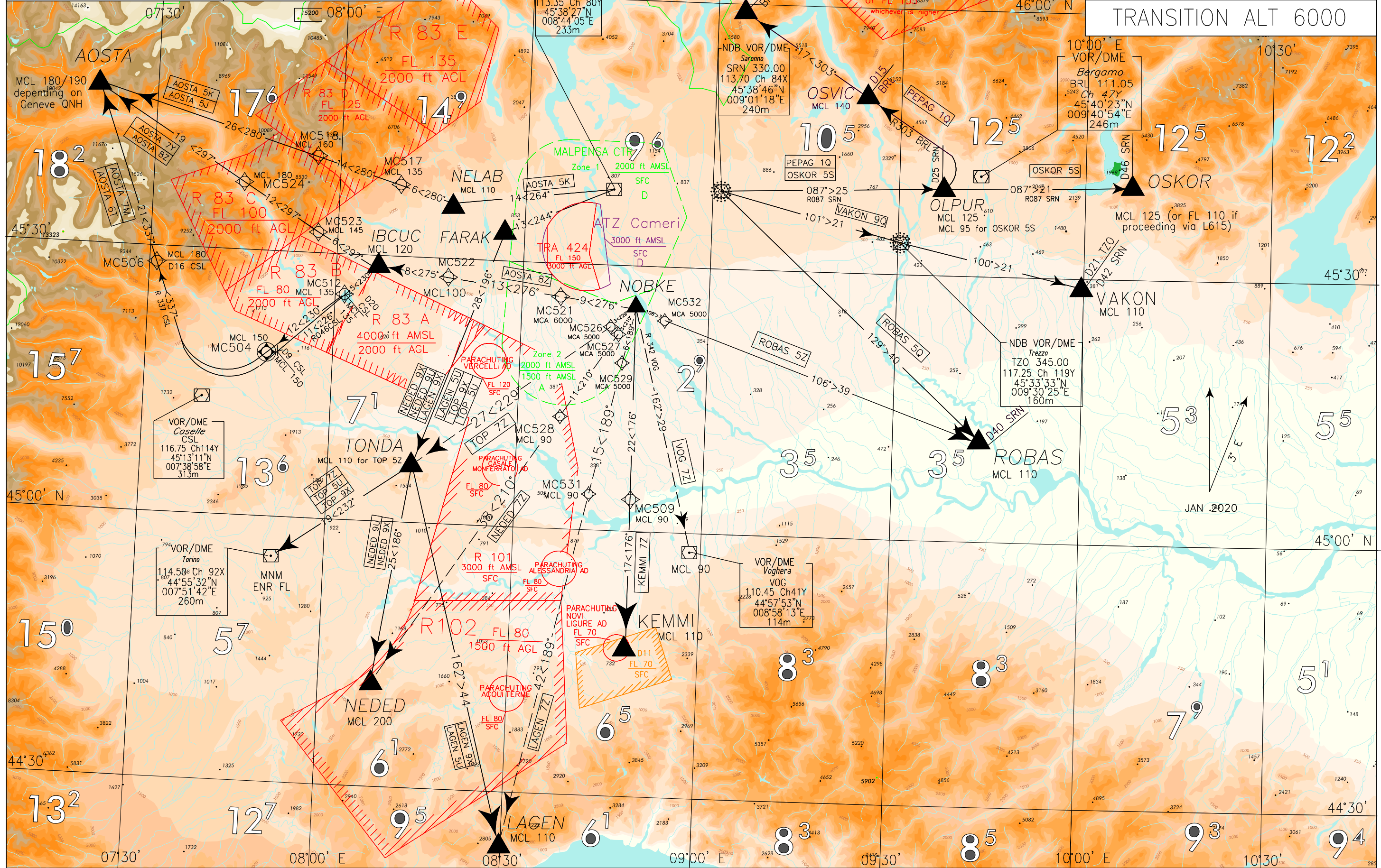
Intenzionalmente bianca

*Intentionally left blank*

FREQUENCIES	
TWR Malpensa TWR	123.600
	128.350
APP Milano RADAR	134.175
ATIS Milano Departure Information	121.625

LEGEND	
----->	ATC discretion
SCALE 1:750.000	
REMARK (1) MCL140/150 depending on Zurich QNH	

MILANO/MALPENSA  
TRANSITION SEGMENTS  
TO ENROUTE  
RWY 17L/R  
TRANSITION ALT 6000



CHANGE: BEG VOR/DME DISMISSED - BRL VOR/DME IMPLEMENTED - ABESI 5Q AND CANNE 5Q WITHDRAWN - PEPAG 1Q IMPLEMENTED AND RENUMBERED PAGE

**TRANSITION SEGMENTS TO ENROUTE DESCRIPTION  
RWY 17L/R**

**AOSTA 7M**

Path Terminator	Waypoint Name	Fly Over	Course °M(°T)	Magnetic Variation	Distance (NM)	Turn Direction	Altitude (ft)	Speed Limit (kt)	Navigation Specification
IF	IBCUC	-	-	-	-	-	FL120	-	RNAV1
TF	MC512	-	230 (232.7)	-	5.0	-	FL135	-	RNAV1
TF	MC504	Y	230 (232.7)	-	12.0	-	FL150	-	RNAV1
CF	MC506	-	337 (339.8)	3°	-	R	FL180	-	RNAV1
TF	AOSTA	-	337 (339.8)	-	20.9	-	FL180/190*	-	RNAV1

\* FL180/190 depending on Geneve QNH.

**AOSTA 7Y**

Path Terminator	Waypoint Name	Fly Over	Course °M(°T)	Magnetic Variation	Distance (NM)	Turn Direction	Altitude (ft)	Speed Limit (kt)	Navigation Specification
IF	IBCUC	-	-	-	-	-	FL120	-	RNAV1
TF	MC523	-	297 (300.0)	-	6.0	-	FL145	-	RNAV1
TF	MC524	-	297 (299.9)	-	12.0	-	FL180	-	RNAV1
TF	AOSTA	-	297 (299.7)	-	18.6	-	FL180/190*	-	RNAV1

\* FL180/190 depending on Geneve QNH.

## AOSTA 5K

Path Terminator	Waypoint Name	Fly Over	Course °M(°T)	Magnetic Variation	Distance (NM)	Turn Direction	Altitude (ft)	Speed Limit (kt)	Navigation Specification
IF	MMP	-	-	-	-	-	-	-	RNAV1
TF	NELAB	-	264 (267.0)	-	13.8	-	FL110	-	RNAV1
TF	MC517	-	280 (283.1)	-	6.0	-	FL135	-	RNAV1
TF	MC518	-	280 (283.0)	-	14.0	-	FL160	-	RNAV1
TF	AOSTA	-	280 (282.8)	-	25.7	-	FL 180/ 190**	-	RNAV1

\* FL 180/190 depending on Geneve QNH

## AOSTA 5J

Path Terminator	Waypoint Name	Fly Over	Course °M(°T)	Magnetic Variation	Distance (NM)	Turn Direction	Altitude (ft)	Speed Limit (kt)	Navigation Specification
IF	NELAB	-	-	-	-	-	FL110	-	RNAV1
TF	MC517	-	280 (283.1)	-	6.0	-	FL135	-	RNAV1
TF	MC518	-	280 (283.0)	-	14.0	-	FL160	-	RNAV1
TF	AOSTA	-	280 (282.8)	-	25.7	-	FL 180/ 190*	-	RNAV1

\* FL 180/190 depending on Geneve QNH

## AOSTA 6T

From IBCUC proceed on TR 226° (RDL 046 CSL VOR), at 9NM CSL DME turn right until joining RDL 337 CSL VOR to AOSTA (RDL 337/37 NM CSL VOR/DME).

MCL: IBCUC, FL120; RDL046/20NM CSL VOR/DME, FL135; RDL046/9NM CSL VOR/DME FL150; RDL 337/16NM CSL VOR/DME, FL 180; AOSTA \*

\* MCL FL180/190 depending on Geneve QNH

## AOSTA 8Z (ATC discretion)

Path Terminator	Waypoint Name	Fly Over	Course °M(°T)	Magnetic Variation	Distance (NM)	Turn Direction	Altitude (ft)	Speed Limit (kt)	Navigation Specification
IF	NOBKE	-	-	-	-	-	-	-	RNAV1
TF	MC521	-	276 (278.4)	-	8.6	-	6000	-	RNAV1
TF	MC522	-	276 (278.3)	-	13.2	-	FL100	-	RNAV1
TF	IBCUC	-	275 (278.1)	-	7.8	-	FL120	-	RNAV1
TF	MC523	-	297 (300.0)	-	6.0	-	FL145	-	RNAV1
TF	MC524	-	297 (299.9)	-	12.0	-	FL180	-	RNAV1
TF	AOSTA	-	297 (299.7)	-	18.6	-	FL180/190*	-	RNAV1

\* FL180/190 depending on Geneve QNH


**KEMMI 7Z**

Path Terminator	Waypoint Name	Fly Over	Course °M(°T)	Magnetic Variation	Distance (NM)	Turn Direction	Altitude (ft)	Speed Limit (kt)	Navigation Specification
IF	NOBKE	-	-	-	-	-	-	-	RNAV 1
TF	MC509	-	176 (178.9)	-	21.9	-	FL90	-	RNAV 1
TF	KEMMI	-	176 (178.8)	-	17.1	-	FL110	-	RNAV 1

**LAGEN 9X**

Path Terminator	Waypoint Name	Fly Over	Course °M(°T)	Magnetic Variation	Distance (NM)	Turn Direction	Altitude (ft)	Speed Limit (kt)	Navigation Specification
IF	MMP	-	-	-	-	-	-	-	RNAV 1
TF	FARAK	-	244 (246.8)	-	13.1	-	-	-	RNAV 1
TF	TONDA	-	196 (199.2)	-	28.3	-	-	-	RNAV 1
TF	LAGEN	-	162 (164.9)	-	44.4	-	FL110	-	RNAV 1

**LAGEN 5U**

Path Terminator	Waypoint Name	Fly Over	Course °M(°T)	Magnetic Variation	Distance (NM)	Turn Direction	Altitude (ft)	Speed Limit (kt)	Navigation Specification
IF	FARAK	-	-	-	-	-	-	-	RNAV 1
TF	TONDA	-	196 (199.2)	-	28.3	-	-	-	RNAV 1
TF	LAGEN	-	162 (164.9)	-	44.4	-	FL110	-	RNAV 1

**LAGEN 7Z (ATC discretion)**

Path Terminator	Waypoint Name	Fly Over	Course °M(°T)	Magnetic Variation	Distance (NM)	Turn Direction	Altitude (ft)	Speed Limit (kt)	Navigation Specification
IF	NOBKE	-	-	-	-	-	-	-	RNAV1
TF	MC529	-	189 (191.6)	-	6.3	-	5000FT	-	RNAV1
TF	MC531	-	189 (191.6)	-	14.9	-	FL90	-	RNAV1
TF	LAGEN	-	189 (191.6)	-	41.8	-	FL110	-	RNAV1

## NEDED 9X

Path Terminator	Waypoint Name	Fly Over	Course °M(°T)	Magnetic Variation	Distance (NM)	Turn Direction	Altitude (ft)	Speed Limit (kt)	Navigation Specification
IF	MMP	-	-	-	-	-	-	-	RNAV 1
TF	FARAK	-	244 (246.8)	-	13.1	-	-	-	RNAV 1
TF	TONDA	-	196 (199.2)	-	28.3	-	-	-	RNAV 1
TF	NEDED	-	186 (188.7)	-	25.2	-	FL200	-	RNAV 1

## NEDED 9U

Path Terminator	Waypoint Name	Fly Over	Course °M(°T)	Magnetic Variation	Distance (NM)	Turn Direction	Altitude (ft)	Speed Limit (kt)	Navigation Specification
IF	FARAK	-	-	-	-	-	-	-	RNAV 1
TF	TONDA	-	196 (199.2)	-	28.3	-	-	-	RNAV 1
TF	NEDED	-	186 (188.7)	-	25.2	-	FL200	-	RNAV 1

## NEDED 7Z (ATC discretion)

Path Terminator	Waypoint Name	Fly Over	Course °M(°T)	Magnetic Variation	Distance (NM)	Turn Direction	Altitude (ft)	Speed Limit (kt)	Navigation Specification
IF	NOBKE	-	-	-	-	-	-	-	RNAV1
TF	MC527	-	210 (212.6)	-	3.0	-	5000FT	-	RNAV1
TF	MC528	-	210 (212.6)	-	11.0	-	FL90	-	RNAV1
TF	NEDED	-	210 (212.5)	-	37.9	-	FL200	-	RNAV1



**OSKOR 5S**

SRN VOR NDB proceed on TR 087° (RDL 087 SRN VOR) to OLPUR, then continue on TR 087° (RDL 087 SRN VOR) direct to OSKOR (RDL 087/46 NM SRN VOR/DME).

MCL: OLPUR, FL95; OSKOR, FL125/110\*

Path Terminator	Waypoint Identifier	Fly Over	Course °M(°T)	Magnetic Variation	Distance (NM)	Turn Direction	Altitude (ft)	Speed Limit (IAS)	Navigation Specification
IF	SRN	-	-	-	-	-	-	-	RNAV 1
TF	OLPUR	-	087 (089.5)	-	25.1	-	FL95	-	RNAV 1
TF	OSKOR	-	087 (089.7)	-	20.9	-	FL125/FL110*	-	RNAV 1

\* FL125 (or FL110 if proceeding via L615)

**PEPAG 1Q**

SRN VOR proceed on TR 087° (RDL/QDR 087 SRN VOR NDB) to OLPUR (RDL/QDR 087/25 NM SRN VOR NDB/DME), then turn left until join and follow RDL 303 BRL VOR (TR 303°) and proceed via OSVIC (RDL 303/15 NM BRL VOR/DME) direct to PEPAG (RDL 303/32 NM BRL VOR/DME).

MCL: OLPUR, FL125; OSVIC, FL140; PEPAG, FL140/150 \*

Path Terminator	Waypoint Name	Fly Over	Course °M(°T)	Magnetic Variation	Distance (NM)	Turn Direction	Altitude (ft)	Speed Limit (kt)	Navigation Specification
IF	SRN	-	-	-	-	-	-	-	RNAV 1
TF	OLPUR	Y	087 (089.5)	-	25.1	-	FL125	-	RNAV 1
CF	OSVIC	-	303 (306.3)	3°	-	L	FL140	-	RNAV 1
TF	PEPAG	-	303 (306.3)	-	16.5	-	FL140/150*	-	RNAV 1

\* FL140/150 depending on Zurich QNH

**ROBAS 5Q**

SRN VOR NDB proceed on TR129° (RDL/QDR 129° SRN VOR NDB) to ROBAS (RDL/QDR 129/40 NM SRN VOR NDB/DME).

MCL: ROBAS, FL110

Path Terminator	Waypoint Identifier	Fly Over	Course °M(°T)	Magnetic Variation	Distance (NM)	Turn Direction	Altitude (ft)	Speed Limit (IAS)	Navigation Specification
IF	SRN	-	-	-	-	-	-	-	RNAV 1
TF	ROBAS	-	129 (132.1)	-	40.3	-	FL110	-	RNAV 1

**ROBAS 5Z**

Path Terminator	Waypoint Identifier	Fly Over	Course °M(°T)	Magnetic Variation	Distance (NM)	Turn Direction	Altitude (ft)	Speed Limit (IAS)	Navigation Specification
IF	NOBKE	-	-	-	-	-	-	-	RNAV 1
TF	MC532	-	106 (109.0)	-	3.0	-	5000	-	RNAV 1
TF	ROBAS	-	106 (109.0)	-	38.8	-	FL110	-	RNAV 1

## TOP 9X

Path Terminator	Waypoint Identifier	Fly Over	Course °M(°T)	Magnetic Variation	Distance (NM)	Turn Direction	Altitude (ft)	Speed Limit (kt)	Navigation Specification
IF	MMP	-	-	-	-	-	-	-	RNAV 1
TF	FARAK	-	244 (246.8)	-	13.1	-	-	-	RNAV 1
TF	TONDA	-	196 (199.2)	-	28.3	-	-	-	RNAV 1
TF	TOP	-	232 (235.0)	-	19.2	-	MNM ENR FL *	-	RNAV 1

\* according to the next ATS route segment

## TOP 5U

Path Terminator	Waypoint Identifier	Fly Over	Course °M(°T)	Magnetic Variation	Distance (NM)	Turn Direction	Altitude (ft)	Speed Limit (kt)	Navigation Specification
IF	FARAK	-	-	-	-	-	-	-	RNAV1
TF	TONDA	-	196 (199.2)	-	28.3	-	-	-	RNAV1
TF	TOP	-	232 (235.0)	-	19.2	-	MNM ENR FL *	-	RNAV1

\*according to the next ATS route segment

## TOP 7Z (ATC discretion)

Path Terminator	Waypoint Name	Fly Over	Course °M(°T)	Magnetic Variation	Distance (NM)	Turn Direction	Altitude (ft)	Speed Limit (kt)	Navigation Specification
IF	NOBKE	-	-	-	-	-	-	-	RNAV1
TF	MC526	-	229 (231.9)	-	3.0	-	5000FT	-	RNAV1
TF	TONDA	-	229 (231.9)	-	27.4	-	FL110	-	RNAV1
TF	TOP	-	232 (235.0)	-	19.2	-	MNM ENR FL *	-	RNAV1

\*according to the next ATS route segment

## VAKON 9Q

SRN VOR proceed on TR 101° (RDL/QDR 101 SRN VOR NDB or RDL/QDR 282 TZO VOR NDB) to TZO VOR NDB, then continue on TR 100° (RDL/QDR 100° TZO VOR NDB or RDL 101 SRN VOR) direct to VAKON (RDL/QDR 100/21 NM TZO VOR NDB/DME or RDL 101/42 SRN VOR/DME).

MCL: VAKON, FL110

Path Terminator	Waypoint Identifier	Fly Over	Course °M(°T)	Magnetic Variation	Distance (NM)	Turn Direction	Altitude (ft)	Speed Limit (kt)	Navigation Specification
IF	SRN	-	-	-	-	-	-	-	RNAV 1
TF	TZO	-	101 (104.1)	-	21.1	-	-	-	RNAV 1
TF	VAKON	-	100 (103.0)	-	21.4	-	FL110	-	RNAV 1

**VOG 7Z (ATC discretion)**

NOBKE proceed on TR 162° (RDL 342 VOG VOR) direct to VOG VOR.

MCL: VOG VOR, FL90

Path Terminator	Waypoint Identifier	Fly Over	Course °M(°T)	Magnetic Variation	Distance (NM)	Turn Direction	Altitude (ft)	Speed Limit (kt)	Navigation Specification
IF	NOBKE	-	-	-	-	-	-	-	RNAV 1
TF	VOG	-	162 (164.8)	-	28.6	-	FL90	-	RNAV 1

**WAYPOINT LIST**

Waypoint Identifier	Coordinates
MC504	45°19'20.19" N 007°46'50.95" E
MC506	45°28'10.75" N 007°31'04.23" E
MC509	45°03'34.67" N 008°48'12.69" E
MC511	45°00'14.63" N 009°50'55.83" E
MC512	45°26'37.34" N 008°00'22.54" E
MC517	45°39'03.44" N 008°16'04.02" E
MC518	45°42'10.68" N 007°56'38.38" E
MC521	45°26'41.67" N 008°35'33.53" E
MC522	45°28'33.88" N 008°17'02.91" E
MC523	45°32'39.02" N 007°58'38.15" E
MC524	45°38'36.98" N 007°43'48.21" E
MC526	45°23'35.74" N 008°44'16.82" E
MC527	45°22'55.26" N 008°45'20.17" E
MC528	45°13'38.16" N 008°36'56.78" E
MC529	45°19'17.31" N 008°45'49.91" E
MC531	45°04'40.08" N 008°41'35.42" E
MC532	45°24'28.37" N 008°51'39.54" E

Intenzionalmente bianca

*Intentionally left blank*

ENAV - Roma

AIP - Italia

OMNI 35L: proceed runway heading climbing to 5000ft. Passing 1300ft turn at own discretion remaining in the sector between 283° and 120°. Passing 3000ft expect radar vectoring from Milan ACC according to the planning. (Minimum PDG 7.41% - 450ft/NM).

**3887**

**2047**

Remark 1: Sector evaluated from point located 600m after the start of take-off (centre of turn area) which has coordinates: 45°37'10.95"N 008°43'33.03"E

Remark 2: Before take-off pilot shall report to the controller the expected manoeuvre after reaching the turn altitude.

Remark 3: To be used only on pilot request in case of bad weather conditons preventing the use of the prescribed published SID.

FREQUENCIES	
TWR Malpensa TWR	123.600
	128.350
APP Milano Radar	134.175
ATIS Malpensa Departure Information	121.625

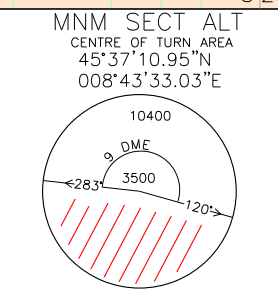
9NM from the Centre of the Turn Area

CENTRE OF TURN AREA  
45°37'10.95"N  
008°43'33.03"E  
(REF. PANS-OPS VOL.II, Part I Section 3 Chap. 4)

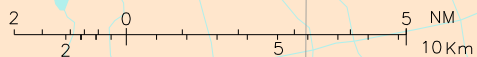
NDB VOR/DME  
Saronno  
SRN 330.00  
113.70 Ch 84X  
45°38'46"N  
009°01'18"E  
240m

VOR/DME  
Malpensa  
MMP 113.35  
Ch 80 Y  
45°38'27"N  
008°44'05"E  
233m

OMNIDIRECTIONAL DEPARTURE AREA	RWY 35L	MILANO/MALPENSA
		TRANSITION ALT 6000



BEARINGS TRACKS AND RADIALS ARE MAGNETIC  
DISTANCES IN NAUTICAL MILES  
ALTITUDES AND ELEVATIONS ARE IN FEET  
SCALE 1:250.000



AFRAC effective date 23 MAR 2023 (A2/23)

AD 2 LIMC 6-53

