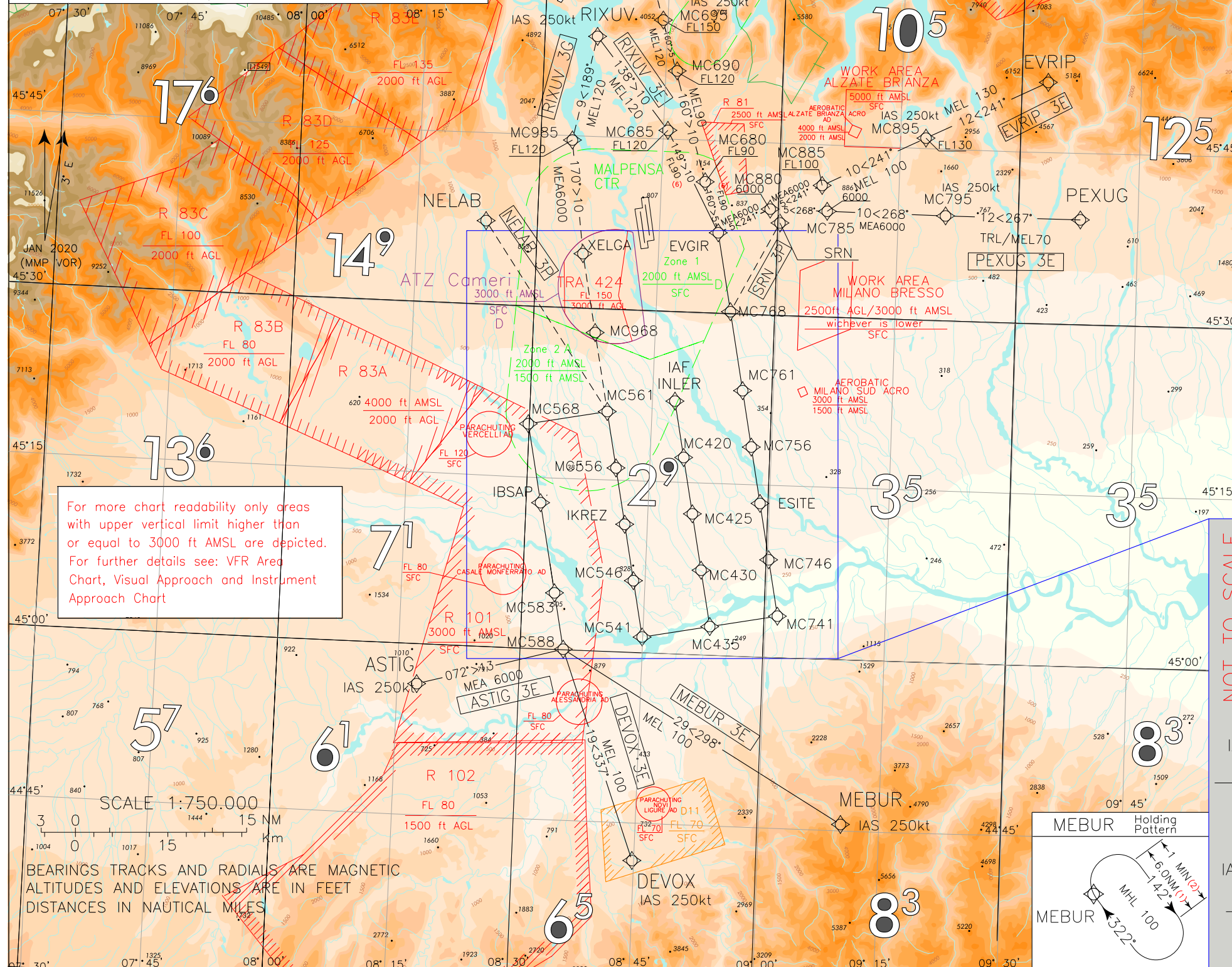


IN CASE OF RADIO FAILURE:
 TRY TO ESTABLISH CONTACT ON ALTERNATIVE FREQUENCIES:
 APP: 125.630MHZ - 126.750MHZ; EMERGENCY: 121.500MHZ;
 TWR: 128.350MHZ - 123.600MHZ;
 IF STILL UNABLE TO ESTABLISH CONTACT:
 - SQUAWK A7600
 - APPROACH CLEARANCE ALREADY RECEIVED: CONTINUE APPROACH ACCORDINGLY
 - APPROACH CLEARANCE NOT RECEIVED: MAINTAIN ASSIGNED LEVEL AND PROCEED
 ALONG ASSIGNED STAR, OR EXPECTED STAR IF NOT ASSIGNED, UNTIL INLER, AT
 INLER DESCEND TO MHA AND START APPROACH FOR RWY35L
 REMARK: IF EAT HAS BEEN ISSUED, APPROACH SHALL START AT EAT.



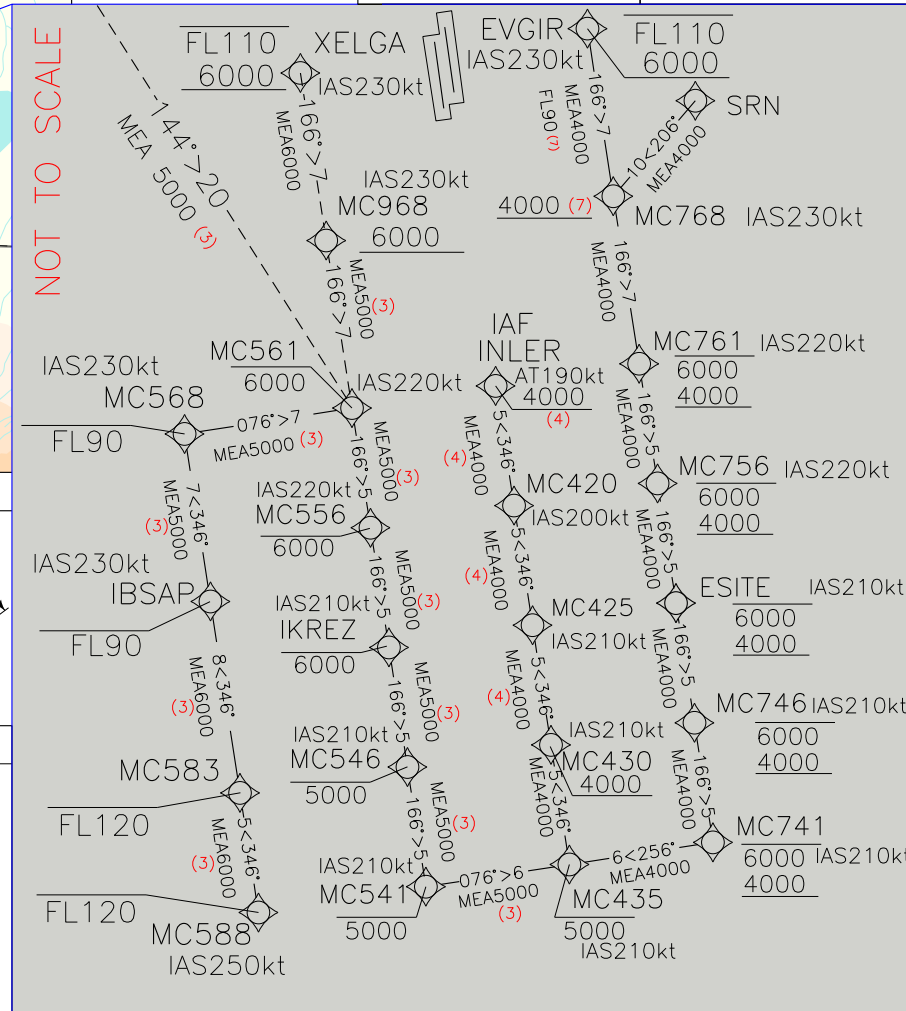
For more chart readability only areas with upper vertical limit higher than or equal to 3000 ft AMSL are depicted. For further details see: VFR Area Chart, Visual Approach and Instrument Approach Chart

CHANGE: TWR FREQ UPDATED



BEARINGS TRACKS AND RADIALS ARE MAGNETIC
 ALTITUDES AND ELEVATIONS ARE IN FEET
 DISTANCES IN NAUTICAL MILES

EVRIP Pattern Holding		MILANO/MALPENSA	
EVRIP		STAR RNAV1	
PEXUG Holding Pattern		RWY 35L/R	
PEXUG		TRANSITION ALT 6000	
INLER Holding Pattern		FREQUENCIES	
INLER		APP Milano Radar	126.750 (N) CH 125.630 (S)
IBSAP Holding Pattern		TWR Malpensa TWR (17R/35L)	128.350
IBSAP		TWR Malpensa TWR (17L/35R)	123.600
XELGA Holding Pattern		ATIS Malpensa Arrival Information	120.025
XELGA			
EVGIR Holding Pattern			
EVGIR			
IKREZ Holding Pattern			
IKREZ			
ESITE Holding Pattern			
ESITE			



LEGEND	REMARKS	ASTIG Holding Pattern	DEVOX Holding Pattern	MNM SECT ALT
<ul style="list-style-type: none"> STAR STAR ATC DISCRETION 	<ul style="list-style-type: none"> (1) for RNAV system with Holding functionality (2) for RNAV system without Holding functionality (3) MEA 4000FT ATC Discretion (4) MEA 3000FT ATC Discretion (5) MHA 4000FT ATC Discretion (6) MEA 6000FT ATC Discretion (7) Only for ODINA 3G and RIXUV 3E MEL 90, and MEA 4000FT ATC Discretion 			

MILANO /MALPENSA
STAR RNAV 1 RWY35 L/R

ASTIG 3E

Path Terminator	Waypoint Identifier	Fly Over	Course °M(°T)	Magnetic Variation	Distance (NM)	Turn Direction	Altitude (ft)	Speed Limit (kt)	Navigation Specification
IF	ASTIG	-	-	-	-	-	-	250	RNAV1
TF	MC588	-	072 (074.3)	-	13.2	-	-FL120 +6000	250	RNAV1
TF	MC583	-	346 (349.0)	-	5.0	L	-FL120 +6000 (1)	-	RNAV1
TF	IBSAP	-	346 (348.9)	-	8.0	-	-FL90 +6000 (1)	230	RNAV1
TF	MC568	-	346 (348.9)	-	7.0	-	-FL90 +5000 (1)	230	RNAV1
TF	MC561	-	076 (078.9)	-	7.0	R	-6000 +5000 (1)	220	RNAV1
TF	MC556	-	166 (169.0)	-	5.0	R	-6000 +5000 (1)	220	RNAV1
TF	IKREZ	-	166 (169.0)	-	5.0	-	-6000 +5000 (1)	210	RNAV1
TF	MC546	-	166 (169.0)	-	5.0	-	@ 5000 (1)	210	RNAV1
TF	MC541	-	166 (169.0)	-	5.0	-	@ 5000 (1)	210	RNAV1
TF	MC435	-	076 (079.1)	-	6.0	L	@ 5000 (1)	210	RNAV1
TF	MC430	-	346 (349.1)	-	5.0	L	+4000	210	RNAV1
TF	MC425	-	346 (349.1)	-	5.0	-	+4000 (2)	210	RNAV1
TF	MC420	-	346 (349.1)	-	5.0	-	+4000 (2)	200	RNAV1
TF	INLER	-	346 (349.1)	-	5.0	-	+4000 (2)	AT 190	RNAV1

(1) +4000FT ATC discretion

(2) +3000FT ATC discretion

DEVOX 3E

Path Terminator	Waypoint Identifier	Fly Over	Course °M(°T)	Magnetic Variation	Distance (NM)	Turn Direction	Altitude (ft)	Speed Limit (kt)	Navigation Specification
IF	DEVOX	-	-	-	-	-	-	250	RNAV1
TF	MC588	-	337 (339.8)	-	19.5	-	-FL120 +FL100	250	RNAV1
TF	MC583	-	346 (349.0)	-	5.0	-	-FL120 +6000 (1)	-	RNAV1
TF	IBSAP	-	346 (348.9)	-	8.0	-	-FL90 +6000 (1)	230	RNAV1
TF	MC568	-	346 (348.9)	-	7.0	-	-FL90 +5000 (1)	230	RNAV1
TF	MC561	-	076 (078.9)	-	7.0	R	-6000 +5000 (1)	220	RNAV1
TF	MC556	-	166 (169.0)	-	5.0	R	-6000 +5000 (1)	220	RNAV1
TF	IKREZ	-	166 (169.0)	-	5.0	-	-6000 +5000 (1)	210	RNAV1
TF	MC546	-	166 (169.0)	-	5.0	-	@ 5000 (1)	210	RNAV1
TF	MC541	-	166 (169.0)	-	5.0	-	@ 5000 (1)	210	RNAV1
TF	MC435	-	076 (079.1)	-	6.0	L	@ 5000 (1)	210	RNAV1
TF	MC430	-	346 (349.1)	-	5.0	L	+4000	210	RNAV1
TF	MC425	-	346 (349.1)	-	5.0	-	+4000 (2)	210	RNAV1
TF	MC420	-	346 (349.1)	-	5.0	-	+4000 (2)	200	RNAV1
TF	INLER	-	346 (349.1)	-	5.0	-	+4000 (2)	AT 190	RNAV1

(1) +4000FT ATC discretion

(2) +3000FT ATC discretion

EVRIP 3E

Path Terminator	Waypoint Identifier	Fly Over	Course °M(°T)	Magnetic Variation	Distance (NM)	Turn Direction	Altitude (ft)	Speed Limit (kt)	Navigation Specification
IF	EVRIP	-	-	-	-	-	-	-	RNAV1
TF	MC895	-	241 (243.9)	-	11.9	-	+FL130	250	RNAV1
TF	MC885	-	241 (243.7)	-	10.0	-	+FL100	-	RNAV1
TF	MC880	-	241 (243.6)	-	5.0	-	+6000	-	RNAV1
TF	EVGIR	-	241 (243.5)	-	5.0	-	-FL110 +6000	230	RNAV1
TF	MC768	-	166 (169.1)	-	7.0	-	+4000	230	RNAV1
TF	MC761	-	166 (169.2)	-	7.0	-	-6000 +4000	220	RNAV1
TF	MC756	-	166 (169.2)	-	5.0	-	-6000 +4000	220	RNAV1
TF	ESITE	-	166 (169.2)	-	5.0	-	-6000 +4000	210	RNAV1
TF	MC746	-	166 (169.2)	-	5.0	-	-6000 +4000	210	RNAV1
TF	MC741	-	166 (169.2)	-	5.0	-	-6000 +4000	210	RNAV1
TF	MC435	-	256 (259.2)	-	6.0	R	-5000 +4000	210	RNAV1
TF	MC430	-	346 (349.1)	-	5.0	R	+4000	210	RNAV1
TF	MC425	-	346 (349.1)	-	5.0	-	+4000 (1)	210	RNAV1
TF	MC420	-	346 (349.1)	-	5.0	-	+4000 (1)	200	RNAV1
TF	INLER	-	346 (349.1)	-	5.0	-	+4000 (1)	AT 190	RNAV1

(1) +3000FT ATC discretion

MEBUR 3E

Path Terminator	Waypoint Identifier	Fly Over	Course °M(°T)	Magnetic Variation	Distance (NM)	Turn Direction	Altitude (ft)	Speed Limit (kt)	Navigation Specification
IF	MEBUR	-	-	-	-	-	-	250	RNAV1
TF	MC588	-	298 (300.4)	-	28.8	-	-FL120 +FL100	250	RNAV1
TF	MC583	-	346 (349.0)	-	5.0	-	-FL120 +6000 (1)	-	RNAV1
TF	IBSAP	-	346 (348.9)	-	8.0	-	-FL90 +6000 (1)	230	RNAV1
TF	MC568	-	346 (348.9)	-	7.0	-	-FL90 +5000 (1)	230	RNAV1
TF	MC561	-	076 (078.9)	-	7.0	R	-6000 +5000 (1)	220	RNAV1
TF	MC556	-	166 (169.0)	-	5.0	R	-6000 +5000 (1)	220	RNAV1
TF	IKREZ	-	166 (169.0)	-	5.0	-	-6000 +5000 (1)	210	RNAV1
TF	MC546	-	166 (169.0)	-	5.0	-	@ 5000 (1)	210	RNAV1
TF	MC541	-	166 (169.0)	-	5.0	-	@ 5000 (1)	210	RNAV1
TF	MC435	-	076 (079.1)	-	6.0	L	@ 5000 (1)	210	RNAV1
TF	MC430	-	346 (349.1)	-	5.0	L	+4000	210	RNAV1
TF	MC425	-	346 (349.1)	-	5.0	-	+4000 (2)	210	RNAV1
TF	MC420	-	346 (349.1)	-	5.0	-	+4000 (2)	200	RNAV1
TF	INLER	-	346 (349.1)	-	5.0	-	+4000 (2)	AT 190	RNAV1

- (1) +4000FT ATC discretion
(2) +3000FT ATC discretion

ODINA 3G (ATC discretion)

Path Terminator	Waypoint Identifier	Fly Over	Course °M(°T)	Magnetic Variation	Distance (NM)	Turn Direction	Altitude (ft)	Speed Limit (kt)	Navigation Specification
IF	ODINA	-	-	-	-	-	-	-	RNAV1
TF	MC695	-	160 (163.0)	-	10.5	-	+FL150	250	RNAV1
TF	MC690	-	160 (163.1)	-	5.0	-	+FL120	-	RNAV1
TF	MC680	-	160 (163.1)	-	10.0	-	+FL90	-	RNAV1
TF	EVGIR	-	160 (163.1)	-	5.0	-	-FL110 +FL90 (1)	230	RNAV1
TF	MC768	-	166 (169.1)	-	7.0	-	+FL90 (2)	230	RNAV1
TF	MC761	-	166 (169.2)	-	7.0	-	-6000 +4000	220	RNAV1
TF	MC756	-	166 (169.2)	-	5.0	-	-6000 +4000	220	RNAV1
TF	ESITE	-	166 (169.2)	-	5.0	-	-6000 +4000	210	RNAV1
TF	MC746	-	166 (169.2)	-	5.0	-	-6000 +4000	210	RNAV1
TF	MC741	-	166 (169.2)	-	5.0	-	-6000 +4000	210	RNAV1
TF	MC435	-	256 (259.2)	-	6.0	R	-5000 +4000	210	RNAV1
TF	MC430	-	346 (349.1)	-	5.0	R	+4000	210	RNAV1
TF	MC425	-	346 (349.1)	-	5.0	-	+4000 (3)	210	RNAV1
TF	MC420	-	346 (349.1)	-	5.0	-	+4000 (3)	200	RNAV1
TF	INLER	-	346 (349.1)	-	5.0	-	+4000 (3)	AT 190	RNAV1

- (1) +6000FT ATC discretion
(2) +4000FT ATC discretion
(3) +3000FT ATC discretion

NELAB 3P (ATC discretion)

Path Terminator	Waypoint Identifier	Fly Over	Course °M(°T)	Magnetic Variation	Distance (NM)	Turn Direction	Altitude (ft)	Speed Limit (kt)	Navigation Specification
IF	NELAB	-	-	-	-	-	-	-	RNAV1
TF	MC561	-	144 (147.2)	-	19.8	-	-6000 +5000 (1)	220	RNAV1
TF	MC556	-	166 (169.0)	-	5.0	-	-6000 +5000 (1)	220	RNAV1
TF	IKREZ	-	166 (169.0)	-	5.0	-	-6000 +5000 (1)	210	RNAV1
TF	MC546	-	166 (169.0)	-	5.0	-	@ 5000 (1)	210	RNAV1
TF	MC541	-	166 (169.0)	-	5.0	-	@ 5000 (1)	210	RNAV1
TF	MC435	-	076 (079.1)	-	6.0	L	@ 5000 (1)	210	RNAV1
TF	MC430	-	346 (349.1)	-	5.0	L	+4000	210	RNAV1
TF	MC425	-	346 (349.1)	-	5.0	-	+4000 (2)	210	RNAV1
TF	MC420	-	346 (349.1)	-	5.0	-	+4000 (2)	200	RNAV1
TF	INLER	-	346 (349.1)	-	5.0	-	+4000 (2)	AT 190	RNAV1

(1) +4000FT ATC discretion

(2) +3000FT ATC discretion

PEXUG 3E

Path Terminator	Waypoint Identifier	Fly Over	Course °M(°T)	Magnetic Variation	Distance (NM)	Turn Direction	Altitude (ft)	Speed Limit (kt)	Navigation Specification
IF	PEXUG	-	-	-	-	-	-	-	RNAV1
TF	MC795	-	267 (270.1)	-	11.8	-	+TRL/FL70	250	RNAV1
TF	MC785	-	268 (270.5)	-	10.4	-	+6000	-	RNAV1
TF	MC880	-	268 (270.3)	-	5.0	-	+6000	-	RNAV1
TF	EVGIR	-	241 (243.5)	-	5.0	-	-FL110 +6000	230	RNAV1
TF	MC768	-	166 (169.1)	-	7.0	-	+4000	230	RNAV1
TF	MC761	-	166 (169.2)	-	7.0	-	-6000 +4000	220	RNAV1
TF	MC756	-	166 (169.2)	-	5.0	-	-6000 +4000	220	RNAV1
TF	ESITE	-	166 (169.2)	-	5.0	-	-6000 +4000	210	RNAV1
TF	MC746	-	166 (169.2)	-	5.0	-	-6000 +4000	210	RNAV1
TF	MC741	-	166 (169.2)	-	5.0	-	-6000 +4000	210	RNAV1
TF	MC435	-	256 (259.2)	-	6.0	R	-5000 +4000	210	RNAV1
TF	MC430	-	346 (349.1)	-	5.0	R	+4000	210	RNAV1
TF	MC425	-	346 (349.1)	-	5.0	-	+4000 (1)	210	RNAV1
TF	MC420	-	346 (349.1)	-	5.0	-	+4000 (1)	200	RNAV1
TF	INLER	-	346 (349.1)	-	5.0	-	+4000 (1)	AT 190	RNAV1

(1) +3000FT ATC discretion

RIXUV 3E

Path Terminator	Waypoint Identifier	Fly Over	Course °M(°T)	Magnetic Variation	Distance (NM)	Turn Direction	Altitude (ft)	Speed Limit (kt)	Navigation Specification
IF	RIXUV	-	-	-	-	-	-	250	RNAV1
TF	MC685	-	138 (140.9)	-	10.3	-	+FL120	-	RNAV1
TF	EVGIR	-	149 (151.6)	-	10.0	-	-FL110 +FL90 (1)	230	RNAV1
TF	MC768	-	166 (169.1)	-	7.0	-	+FL90 (2)	230	RNAV1
TF	MC761	-	166 (169.2)	-	7.0	-	-6000 +4000	220	RNAV1
TF	MC756	-	166 (169.2)	-	5.0	-	-6000 +4000	220	RNAV1
TF	ESITE	-	166 (169.2)	-	5.0	-	-6000 +4000	210	RNAV1
TF	MC746	-	166 (169.2)	-	5.0	-	-6000 +4000	210	RNAV1
TF	MC741	-	166 (169.2)	-	5.0	-	-6000 +4000	210	RNAV1
TF	MC435	-	256 (259.2)	-	6.0	R	-5000 +4000	210	RNAV1
TF	MC430	-	346 (349.1)	-	5.0	R	+4000	210	RNAV1
TF	MC425	-	346 (349.1)	-	5.0	-	+4000 (3)	210	RNAV1
TF	MC420	-	346 (349.1)	-	5.0	-	+4000 (3)	200	RNAV1
TF	INLER	-	346 (349.1)	-	5.0	-	+4000 (3)	AT 190	RNAV1

- (1) 6000FT ATC discretion
(2) +4000FT ATC discretion
(3) +3000FT ATC discretion

RIXUV 3G (ATC discretion)

Path Terminator	Waypoint Identifier	Fly Over	Course °M(°T)	Magnetic Variation	Distance (NM)	Turn Direction	Altitude (ft)	Speed Limit (kt)	Navigation Specification
IF	RIXUV	-	-	-	-	-	-	250	RNAV1
TF	MC985	-	189 (191.4)	-	9.3	-	+FL120	-	RNAV1
TF	XELGA	-	170 (172.4)	-	10.0	-	-FL110 +6000	230	RNAV1
TF	MC968	-	166 (169.0)	-	7.0	-	+6000	-	RNAV1
TF	MC561	-	166 (169.0)	-	7.0	-	-6000 +5000 (1)	220	RNAV1
TF	MC556	-	166 (169.0)	-	5.0	-	-6000 +5000 (1)	220	RNAV1
TF	IKREZ	-	166 (169.0)	-	5.0	-	-6000 +5000 (1)	210	RNAV1
TF	MC546	-	166 (169.0)	-	5.0	-	@ 5000 (1)	210	RNAV1
TF	MC541	-	166 (169.0)	-	5.0	-	@ 5000 (1)	210	RNAV1
TF	MC435	-	076 (079.1)	-	6.0	L	@ 5000 (1)	210	RNAV1
TF	MC430	-	346 (349.1)	-	5.0	L	+4000	210	RNAV1
TF	MC425	-	346 (349.1)	-	5.0	-	+4000 (2)	210	RNAV1
TF	MC420	-	346 (349.1)	-	5.0	-	+4000 (2)	200	RNAV1
TF	INLER	-	346 (349.1)	-	5.0	-	+4000 (2)	AT 190	RNAV1

(1) +4000FT ATC discretion

(2) +3000FT ATC discretion

SRN 3P (ATC discretion)

Path Terminator	Waypoint Identifier	Fly Over	Course °M(°T)	Magnetic Variation	Distance (NM)	Turn Direction	Altitude (ft)	Speed Limit (kt)	Navigation Specification
IF	SRN	-	-	-	-	-	-	-	RNAV1
TF	MC768	-	206 (209.2)	-	9.8	-	+4000	-	RNAV1
TF	MC761	-	166 (169.2)	-	7.0	-	-6000 +4000	220	RNAV1
TF	MC756	-	166 (169.2)	-	5.0	-	-6000 +4000	220	RNAV1
TF	ESITE	-	166 (169.2)	-	5.0	-	-6000 +4000	210	RNAV1
TF	MC746	-	166 (169.2)	-	5.0	-	-6000 +4000	210	RNAV1
TF	MC741	-	166 (169.2)	-	5.0	-	-6000 +4000	210	RNAV1
TF	MC435	-	256 (259.2)	-	6.0	R	-5000 +4000	210	RNAV1
TF	MC430	-	346 (349.1)	-	5.0	R	+4000	210	RNAV1
TF	MC425	-	346 (349.1)	-	5.0	-	+4000 (1)	210	RNAV1
TF	MC420	-	346 (349.1)	-	5.0	-	+4000 (1)	200	RNAV1
TF	INLER	-	346 (349.1)	-	5.0	-	+4000 (1)	AT 190	RNAV1

(1) +3000FT ATC discretion

HOLDING RNAV 1

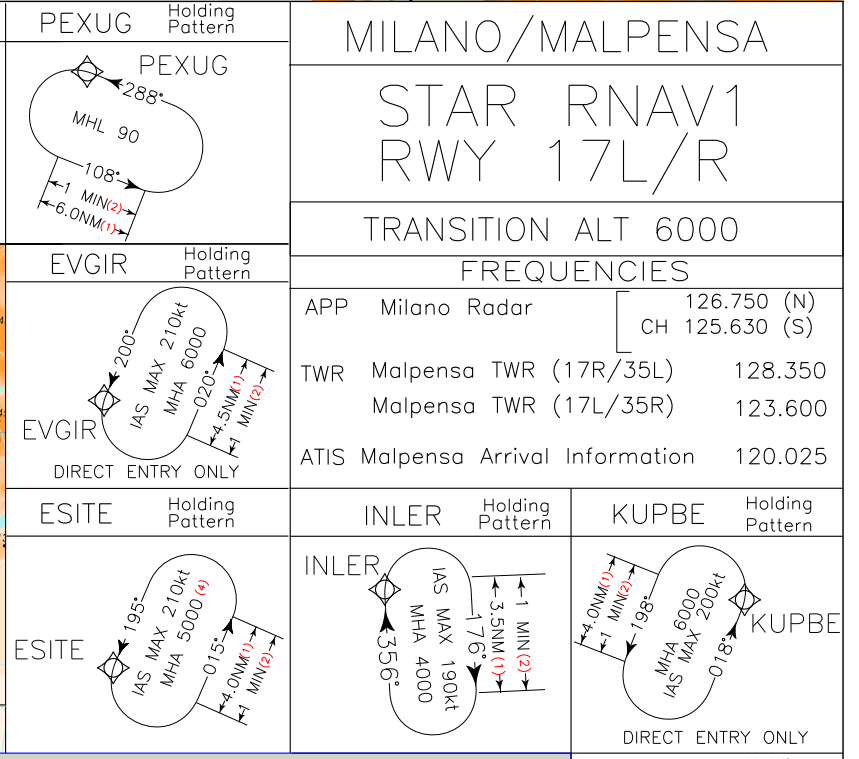
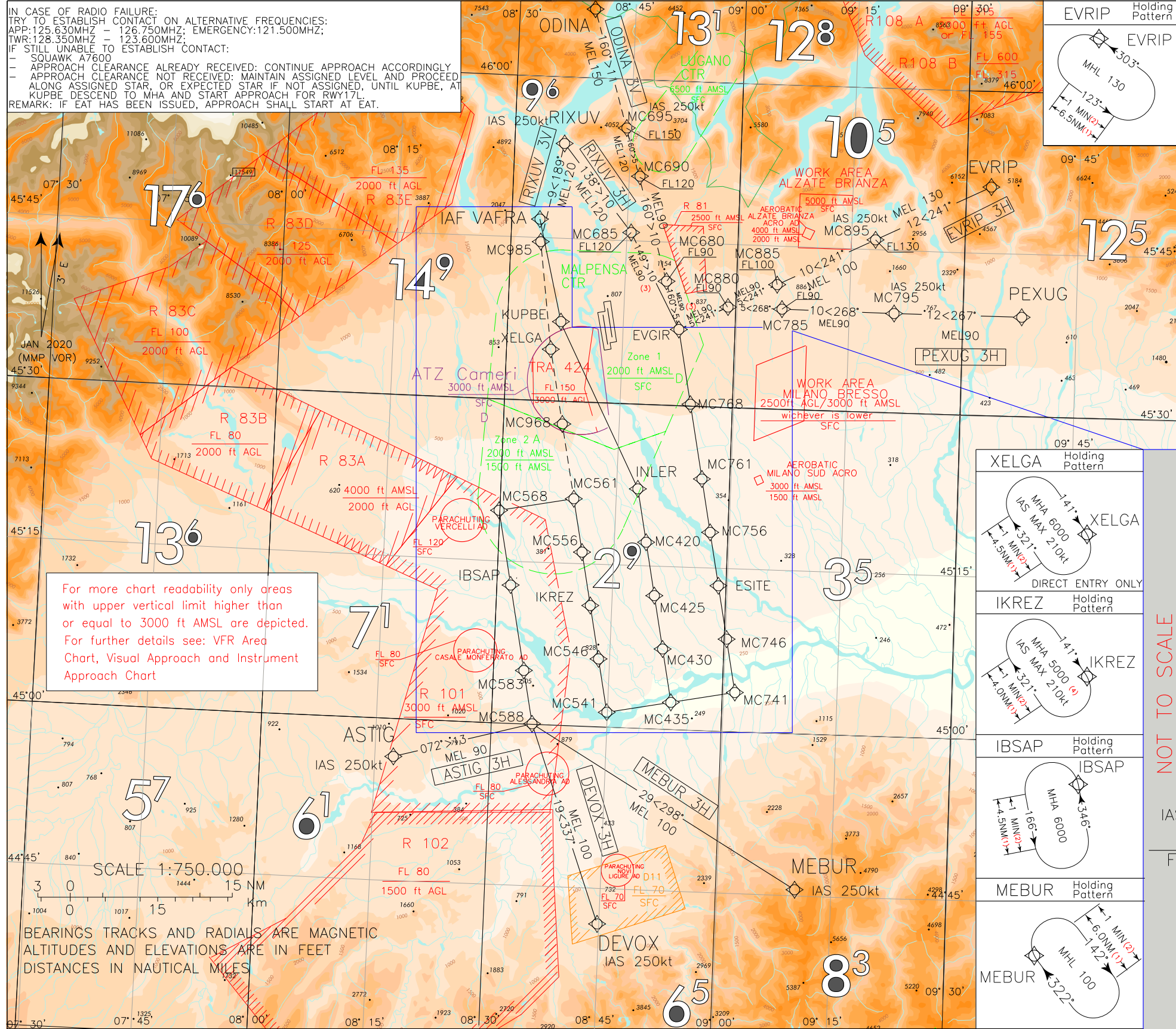
Path Terminator	Waypoint Identifier	Inbound Course °M (°T)	Leg Distance (NM) (1)	Timing(min./ Waypoint Distance (NM) (2)	Turn Direction	Minimum Altitude (FT)	Maximum Altitude (FL)	Speed Limit (kt)	Magnetic Variation (°)	Navigation Specification
HM	ASTIG	084 (087.0)	6.0	1.0/ -	L	+FL100	-	-	3	RNAV1
HM	DEVOX	018 (021.0)	6.0	1.0/ -	L	+FL100	-	-	3	RNAV1
HM (4)	EVGIR	200 (203.0)	4.5	1.0/ -	L	+6000	-	-210	3	RNAV1
HM	EVRIP	303 (306.0)	6.5	1.0/ -	L	+FL130	-	-	3	RNAV1
HM	IBSAP	346 (348.9)	4.5	1.0/ -	L	+6000	-	-	3	RNAV1
HM	INLER	356 (359.0)	3.5	1.0/ -	R	+4000	-	-190	3	RNAV1
HM	MEBUR	322 (325.0)	6.0	1.0/ -	R	+FL100	-	-	3	RNAV1
HM	ESITE	195 (198.0)	4.0	1.0/ -	L	+5000 (3)	-	-210	3	RNAV1
HM	IKREZ	141 (144.0)	4.0	1.0/ -	R	+5000 (3)	-	-210	3	RNAV1
HM	PEXUG	288 (291.0)	6.0	1.0/ -	L	+FL90	-	-	3	RNAV1
HM (4)	XELGA	141 (144.0)	4.5	1.0/ -	R	+6000	-	-210	3	RNAV1

- (1) RNAV system with holding functionality
(2) RNAV system without holding functionality
(3) MHA 4000FT ATC discretion
(4) Direct Entry Only

WAYPOINT LIST

Waypoint Identifier	Coordinates
MC420	45°17'15.67" N 008°49'20.14" E
MC425	45°12'21.00" N 008°50'40.41" E
MC430	45°07'26.31" N 008°52'00.44" E
MC435	45°02'31.60" N 008°53'20.24" E
MC541	45°01'23.49" N 008°45'01.43" E
MC546	45°06'18.10" N 008°43'40.95" E
MC556	45°16'07.26" N 008°40'59.27" E
MC561	45°21'01.81" N 008°39'38.09" E
MC568	45°19'41.13" N 008°29'53.51" E
MC583	45°04'57.79" N 008°33'58.89" E
MC588	45°00'03.27" N 008°35'20.06" E
MC680	45°41'50.53" N 008°50'32.55" E
MC685	45°45'51.66" N 008°45'50.46" E
MC690	45°51'24.73" N 008°46'23.38" E
MC695	45°56'11.80" N 008°44'18.25" E
MC741	45°03'39.07" N 009°01'39.11" E
MC746	45°08'33.88" N 009°00'19.99" E
MC756	45°18'23.43" N 008°57'41.08" E
MC761	45°23'18.18" N 008°56'21.28" E
MC768	45°30'10.79" N 008°54'29.17" E
MC785	45°39'16.19" N 009°06'07.05" E
MC795	45°39'12.00" N 009°20'55.00" E
MC880	45°39'17.52" N 008°58'59.2" E
MC885	45°41'31.29" N 009°05'22.34" E
MC895	45°45'57.72" N 009°18'10.09" E
MC968	45°27'54.18" N 008°37'44.29" E
MC985	45°44'41.31" N 008°33'56.69" E

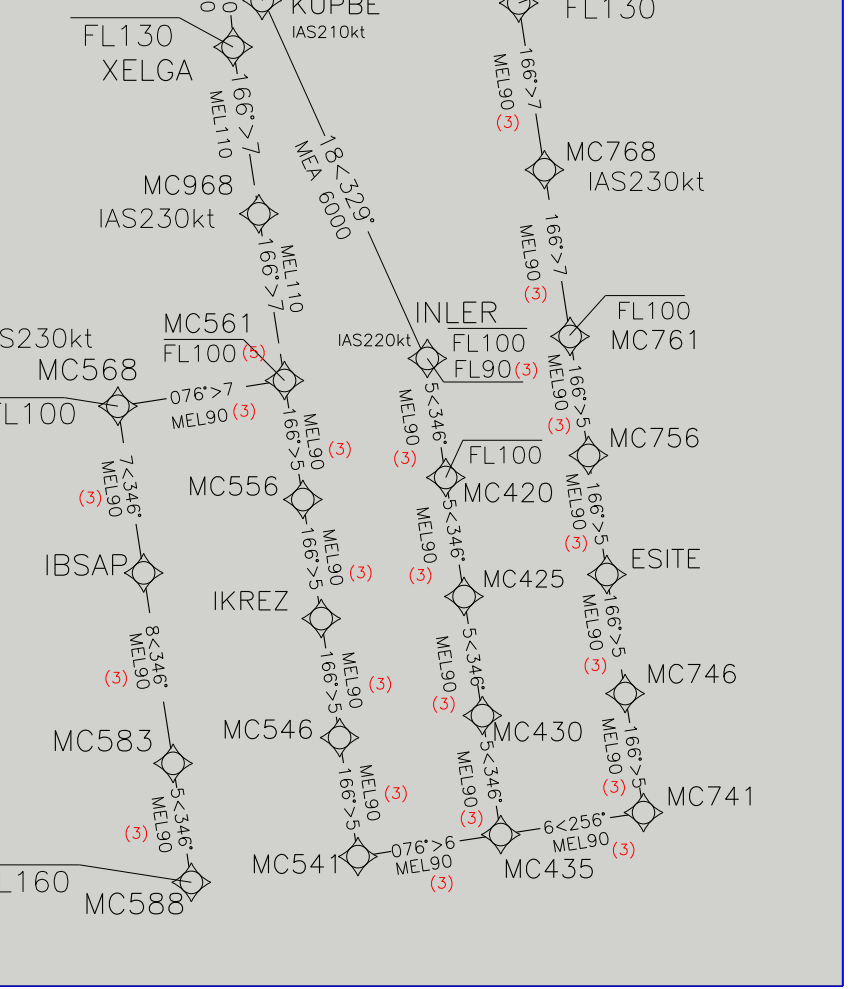
IN CASE OF RADIO FAILURE:
 TRY TO ESTABLISH CONTACT ON ALTERNATIVE FREQUENCIES:
 APP:125.630MHZ - 126.750MHZ; EMERGENCY:121.500MHZ;
 TWR:128.350MHZ - 123.600MHZ;
 IF STILL UNABLE TO ESTABLISH CONTACT:
 - SQUAWK 7600
 - APPROACH CLEARANCE ALREADY RECEIVED: CONTINUE APPROACH ACCORDINGLY
 - APPROACH CLEARANCE NOT RECEIVED: MAINTAIN ASSIGNED LEVEL AND PROCEED
 ALONG ASSIGNED STAR, OR EXPECTED STAR IF NOT ASSIGNED, UNTIL KUPBE, AT
 KUPBE DESCEND TO MHA AND START APPROACH FOR RWY17L.
 REMARK: IF EAT HAS BEEN ISSUED, APPROACH SHALL START AT EAT.



MILANO/MALPENSA
 STAR RNAV1
 RWY 17L/R

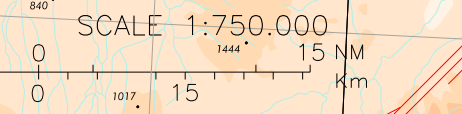
TRANSITION ALT 6000

FREQUENCIES	
APP Milano Radar	126.750 (N) CH 125.630 (S)
TWR Malpensa TWR (17R/35L)	128.350
Malpensa TWR (17L/35R)	123.600
ATIS Malpensa Arrival Information	120.025



NOT TO SCALE

For more chart readability only areas with upper vertical limit higher than or equal to 3000 ft AMSL are depicted. For further details see: VFR Area Chart, Visual Approach and Instrument Approach Chart



BEARINGS TRACKS AND RADIALS ARE MAGNETIC
 ALTITUDES AND ELEVATIONS ARE IN FEET
 DISTANCES IN NAUTICAL MILES

LEGEND	REMARKS	ASTIG Holding Pattern	DEVOX Holding Pattern	MNM SECT ALT
STAR STAR ATC DISCRETION	(1) for RNAV system with Holding functionality (2) for RNAV system without Holding functionality (3) MEA 6000FT ATC Discretion (4) MHA 4000FT ATC Discretion (5) MAX LEVEL FL100 only for ASTIG 3H, DEVOX 3H and MEBUR 3H			25 NM ARP 10300

CHANGE: TWR FREQ UPDATED AND RENUMBERED PAGE

MILANO /MALPENSA
STAR RNAV 1 RWY17 L/R

ASTIG 3H

Path Terminator	Waypoint Identifier	Fly Over	Course °M(°T)	Magnetic Variation	Distance (NM)	Turn Direction	Altitude (ft)	Speed Limit (kt)	Navigation Specification
IF	ASTIG	-	-	-	-	-	-	250	RNAV1
TF	MC588	-	072 (074.3)	-	13.2	-	-FL160 +FL90	-	RNAV1
TF	MC583	-	346 (349.0)	-	5.0	L	+FL90 (1)	-	RNAV1
TF	IBSAP	-	346 (348.9)	-	8.0	-	+FL90 (1)	-	RNAV1
TF	MC568	-	346 (348.9)	-	7.0	-	-FL100 +FL90 (1)	230	RNAV1
TF	MC561	-	076 (078.9)	-	7.0	R	-FL100 +FL90 (1)	-	RNAV1
TF	MC556	-	166 (169.0)	-	5.0	R	+FL90 (1)	-	RNAV1
TF	IKREZ	-	166 (169.0)	-	5.0	-	+FL90 (1)	-	RNAV1
TF	MC546	-	166 (169.0)	-	5.0	-	+FL90 (1)	-	RNAV1
TF	MC541	-	166 (169.0)	-	5.0	-	+FL90 (1)	-	RNAV1
TF	MC435	-	076 (079.1)	-	6.0	L	+FL90 (1)	-	RNAV1
TF	MC430	-	346 (349.1)	-	5.0	L	+FL90 (1)	-	RNAV1
TF	MC425	-	346 (349.1)	-	5.0	-	+FL90 (1)	-	RNAV1
TF	MC420	-	346 (349.1)	-	5.0	-	-FL100 +FL90 (1)	-	RNAV1
TF	INLER	-	346 (349.1)	-	5.0	-	-FL100 +FL90 (1)	220	RNAV1
TF	KUPBE	-	329 (331.8)	-	17.5		-FL100 +6000	210	RNAV1
TF	VAFRA	-	346 (348.9)	-	9.0	-	+4500	200	RNAV1

(1) +6000FT ATC discretion

DEVOX 3H

Path Terminator	Waypoint Identifier	Fly Over	Course °M(°T)	Magnetic Variation	Distance (NM)	Turn Direction	Altitude (ft)	Speed Limit (kt)	Navigation Specification
IF	DEVOX	-	-	-	-	-	-	250	RNAV1
TF	MC588	-	337 (339.8)	-	19.5	-	-FL160 +FL100	-	RNAV1
TF	MC583	-	346 (349.0)	-	5.0	-	+FL90 (1)	-	RNAV1
TF	IBSAP	-	346 (348.9)	-	8.0	-	+FL90 (1)	-	RNAV1
TF	MC568	-	346 (348.9)	-	7.0	-	-FL100 +FL90 (1)	230	RNAV1
TF	MC561	-	076 (078.9)	-	7.0	R	-FL100 +FL90 (1)	-	RNAV1
TF	MC556	-	166 (169.0)	-	5.0	R	+FL90 (1)	-	RNAV1
TF	IKREZ	-	166 (169.0)	-	5.0	-	+FL90 (1)	-	RNAV1
TF	MC546	-	166 (169.0)	-	5.0	-	+FL90 (1)	-	RNAV1
TF	MC541	-	166 (169.0)	-	5.0	-	+FL90 (1)	-	RNAV1
TF	MC435	-	076 (079.1)	-	6.0	L	+FL90 (1)	-	RNAV1
TF	MC430	-	346 (349.1)	-	5.0	L	+FL90 (1)	-	RNAV1
TF	MC425	-	346 (349.1)	-	5.0	-	+FL90 (1)	-	RNAV1
TF	MC420	-	346 (349.1)	-	5.0	-	-FL100 +FL90 (1)	-	RNAV1
TF	INLER	-	346 (349.1)	-	5.0	-	-FL100 +FL90 (1)	220	RNAV1
TF	KUPBE	-	329 (331.8)	-	17.5	-	-FL100 +6000	210	RNAV1
TF	VAFRA	-	346 (348.9)	-	9.0	-	+4500	200	RNAV1

(1) +6000FT ATC discretion

EVRIP 3H

Path Terminator	Waypoint Identifier	Fly Over	Course °M(°T)	Magnetic Variation	Distance (NM)	Turn Direction	Altitude (ft)	Speed Limit (kt)	Navigation Specification
IF	EVRIP	-	-	-	-	-	-	-	RNAV1
TF	MC895	-	241 (243.9)	-	11.9	-	+FL130	250	RNAV1
TF	MC885	-	241 (243.7)	-	10.0	-	+FL100	-	RNAV1
TF	MC880	-	241 (243.6)	-	5.0	-	+FL90	-	RNAV1
TF	EVGIR	-	241 (243.5)	-	5.0	-	-FL130 +FL90 (1)	-	RNAV1
TF	MC768	-	166 (169.1)	-	7.0	-	+FL90 (1)	230	RNAV1
TF	MC761	-	166 (169.2)	-	7.0	-	-FL100 +FL90 (1)	-	RNAV1
TF	MC756	-	166 (169.2)	-	5.0	-	+FL90 (1)	-	RNAV1
TF	ESITE	-	166 (169.2)	-	5.0	-	+FL90 (1)	-	RNAV1
TF	MC746	-	166 (169.2)	-	5.0	-	+FL90 (1)	-	RNAV1
TF	MC741	-	166 (169.2)	-	5.0	-	+FL90 (1)	-	RNAV1
TF	MC435	-	256 (259.2)	-	6.0	R	+FL90 (1)	-	RNAV1
TF	MC430	-	346 (349.1)	-	5.0	R	+FL90 (1)	-	RNAV1
TF	MC425	-	346 (349.1)	-	5.0	-	+FL90 (1)	-	RNAV1
TF	MC420	-	346 (349.1)	-	5.0	-	-FL100 +FL90 (1)	-	RNAV1
TF	INLER	-	346 (349.1)	-	5.0	-	-FL100 +FL90 (1)	220	RNAV1
TF	KUPBE	-	329 (331.8)	-	17.5	-	-FL100 +6000	210	RNAV1
TF	VAFRA	-	346 (348.9)	-	9.0	-	+4500	200	RNAV1

(1) +6000FT ATC discretion

MEBUR 3H

Path Terminator	Waypoint Identifier	Fly Over	Course °M(°T)	Magnetic Variation	Distance (NM)	Turn Direction	Altitude (ft)	Speed Limit (kt)	Navigation Specification
IF	MEBUR	-	-	-	-	-	-	250	RNAV1
TF	MC588	-	298 (300.4)	-	28.8	-	-FL160 +FL100	-	RNAV1
TF	MC583	-	346 (349.0)	-	5.0	-	+FL90 (1)	-	RNAV1
TF	IBSAP	-	346 (348.9)	-	8.0	-	+FL90 (1)	-	RNAV1
TF	MC568	-	346 (348.9)	-	7.0	-	-FL100 +FL90 (1)	230	RNAV1
TF	MC561	-	076 (078.9)	-	7.0	R	-FL100 +FL90 (1)	-	RNAV1
TF	MC556	-	166 (169.0)	-	5.0	R	+FL90 (1)	-	RNAV1
TF	IKREZ	-	166 (169.0)	-	5.0	-	+FL90 (1)	-	RNAV1
TF	MC546	-	166 (169.0)	-	5.0	-	+FL90 (1)	-	RNAV1
TF	MC541	-	166 (169.0)	-	5.0	-	+FL90 (1)	-	RNAV1
TF	MC435	-	076 (079.1)	-	6.0	L	+FL90 (1)	-	RNAV1
TF	MC430	-	346 (349.1)	-	5.0	L	+FL90 (1)	-	RNAV1
TF	MC425	-	346 (349.1)	-	5.0	-	+FL90 (1)	-	RNAV1
TF	MC420	-	346 (349.1)	-	5.0	-	-FL100 +FL90 (1)	-	RNAV1
TF	INLER	-	346 (349.1)	-	5.0	-	-FL100 +FL90 (1)	220	RNAV1
TF	KUPBE	-	329 (331.8)	-	17.5	-	-FL100 +6000	210	RNAV1
TF	VAFRA	-	346 (348.9)	-	9.0	-	+4500	200	RNAV1

(1) +6000FT ATC discretion

ODINA 3V (ATC discretion)

Path Terminator	Waypoint Identifier	Fly Over	Course °M(°T)	Magnetic Variation	Distance (NM)	Turn Direction	Altitude (ft)	Speed Limit (kt)	Navigation Specification
IF	ODINA	-	-	-	-	-	-	-	RNAV1
TF	MC695	-	160 (163.0)	-	10.5	-	+FL150	250	RNAV1
TF	MC690	-	160 (163.1)	-	5.0	-	+FL120	-	RNAV1
TF	MC680	-	160 (163.1)	-	10.0	-	+FL90	-	RNAV1
TF	EVGIR	-	160 (163.1)	-	5.0	-	-FL130 +FL90 (1)	-	RNAV1
TF	MC768	-	166 (169.1)	-	7.0	-	+FL90 (1)	230	RNAV1
TF	MC761	-	166 (169.2)	-	7.0	-	-FL100 +FL90 (1)	-	RNAV1
TF	MC756	-	166 (169.2)	-	5.0	-	+FL90 (1)	-	RNAV1
TF	ESITE	-	166 (169.2)	-	5.0	-	+FL90 (1)	-	RNAV1
TF	MC746	-	166 (169.2)	-	5.0	-	+FL90 (1)	-	RNAV1
TF	MC741	-	166 (169.2)	-	5.0	-	+FL90 (1)	-	RNAV1
TF	MC435	-	256 (259.2)	-	6.0	R	+FL90 (1)	-	RNAV1
TF	MC430	-	346 (349.1)	-	5.0	R	+FL90 (1)	-	RNAV1
TF	MC425	-	346 (349.1)	-	5.0	-	+FL90 (1)	-	RNAV1
TF	MC420	-	346 (349.1)	-	5.0	-	-FL100 +FL90 (1)	-	RNAV1
TF	INLER	-	346 (349.1)	-	5.0	-	-FL100 +FL90 (1)	220	RNAV1
TF	KUPBE	-	329 (331.8)	-	17.5	-	-FL100 +6000	210	RNAV1
TF	VAFRA	-	346 (348.9)	-	9.0	-	+4500	200	RNAV1

(1) +6000FT ATC discretion

PEXUG 3H

Path Terminator	Waypoint Identifier	Fly Over	Course °M(°T)	Magnetic Variation	Distance (NM)	Turn Direction	Altitude (ft)	Speed Limit (kt)	Navigation Specification
IF	PEXUG	-	-	-	-	-	-	-	RNAV1
TF	MC795	-	267 (270.1)	-	11.8	-	+FL90	250	RNAV1
TF	MC785	-	268 (270.5)	-	10.4	-	+FL90	-	RNAV1
TF	MC880	-	268 (270.3)	-	5.0	-	+FL90	-	RNAV1
TF	EVGIR	-	241 (243.5)	-	5.0	-	-FL130 +FL90 (1)	-	RNAV1
TF	MC768	-	166 (169.1)	-	7.0	-	+FL90 (1)	230	RNAV1
TF	MC761	-	166 (169.2)	-	7.0	-	-FL100 +FL90 (1)	-	RNAV1
TF	MC756	-	166 (169.2)	-	5.0	-	+FL90 (1)	-	RNAV1
TF	ESITE	-	166 (169.2)	-	5.0	-	+FL90 (1)	-	RNAV1
TF	MC746	-	166 (169.2)	-	5.0	-	+FL90 (1)	-	RNAV1
TF	MC741	-	166 (169.2)	-	5.0	-	+FL90 (1)	-	RNAV1
TF	MC435	-	256 (259.2)	-	6.0	R	+FL90 (1)	-	RNAV1
TF	MC430	-	346 (349.1)	-	5.0	R	+FL90 (1)	-	RNAV1
TF	MC425	-	346 (349.1)	-	5.0	-	+FL90 (1)	-	RNAV1
TF	MC420	-	346 (349.1)	-	5.0	-	-FL100 +FL90 (1)	-	RNAV1
TF	INLER	-	346 (349.1)	-	5.0	-	-FL100 +FL90 (1)	220	RNAV1
TF	KUPBE	-	329 (331.8)	-	17.5	-	-FL100 +6000	210	RNAV1
TF	VAFRA	-	346 (348.9)	-	9.0	-	+4500	200	RNAV1

(1) +6000FT ATC discretion

RIXUV 3H

Path Terminator	Waypoint Identifier	Fly Over	Course °M(°T)	Magnetic Variation	Distance (NM)	Turn Direction	Altitude (ft)	Speed Limit (kt)	Navigation Specification
IF	RIXUV	-	-	-	-	-	-	250	RNAV1
TF	MC685	-	138 (140.9)	-	10.3	-	+FL120	-	RNAV1
TF	EVGIR	-	149 (151.6)	-	10.0	-	-FL130 +FL90 (1)	-	RNAV1
TF	MC768	-	166 (169.1)	-	7.0	-	+FL90 (1)	230	RNAV1
TF	MC761	-	166 (169.2)	-	7.0	-	-FL100 +FL90 (1)	-	RNAV1
TF	MC756	-	166 (169.2)	-	5.0	-	+FL90 (1)	-	RNAV1
TF	ESITE	-	166 (169.2)	-	5.0	-	+FL90 (1)	-	RNAV1
TF	MC746	-	166 (169.2)	-	5.0	-	+FL90 (1)	-	RNAV1
TF	MC741	-	166 (169.2)	-	5.0	-	+FL90 (1)	-	RNAV1
TF	MC435	-	256 (259.2)	-	6.0	R	+FL90 (1)	-	RNAV1
TF	MC430	-	346 (349.1)	-	5.0	R	+FL90 (1)	-	RNAV1
TF	MC425	-	346 (349.1)	-	5.0	-	+FL90 (1)	-	RNAV1
TF	MC420	-	346 (349.1)	-	5.0	-	-FL100 +FL90 (1)	-	RNAV1
TF	INLER	-	346 (349.1)	-	5.0	-	-FL100 +FL90 (1)	220	RNAV1
TF	KUPBE	-	329 (331.8)	-	17.5	-	-FL100 +6000	210	RNAV1
TF	VAFRA	-	346 (348.9)	-	9.0	-	+4500	200	RNAV1

(1) +6000FT ATC discretion

RIXUV 3V (ATC discretion)

Path Terminator	Waypoint Identifier	Fly Over	Course °M(°T)	Magnetic Variation	Distance (NM)	Turn Direction	Altitude (ft)	Speed Limit (kt)	Navigation Specification
IF	RIXUV	-	-	-	-	-	-	250	RNAV1
TF	MC985	-	189 (191.4)	-	9.3	-	+FL120	-	RNAV1
TF	XELGA	-	170 (172.4)	-	10.0	-	-FL130 +FL110	-	RNAV1
TF	MC968	-	166 (169.0)	-	7.0	-	+FL110	230	RNAV1
TF	MC561	-	166 (169.0)	-	7.0	-	+FL110	-	RNAV1
TF	MC556	-	166 (169.0)	-	5.0	-	+FL90 (1)	-	RNAV1
TF	IKREZ	-	166 (169.0)	-	5.0	-	+FL90 (1)	-	RNAV1
TF	MC546	-	166 (169.0)	-	5.0	-	+FL90 (1)	-	RNAV1
TF	MC541	-	166 (169.0)	-	5.0	-	+FL90 (1)	-	RNAV1
TF	MC435	-	076 (079.1)	-	6.0	L	+FL90 (1)	-	RNAV1
TF	MC430	-	346 (349.1)	-	5.0	L	+FL90 (1)	-	RNAV1
TF	MC425	-	346 (349.1)	-	5.0	-	+FL90 (1)	-	RNAV1
TF	MC420	-	346 (349.1)	-	5.0	-	-FL100 +FL90 (1)	-	RNAV1
TF	INLER	-	346 (349.1)	-	5.0	-	-FL100 +FL90 (1)	220	RNAV1
TF	KUPBE	-	329 (331.8)	-	17.5	-	-FL100 +6000	210	RNAV1
TF	VAFRA	-	346 (348.9)	-	9.0	-	+4500	200	RNAV1

(1) +6000FT ATC discretion

HOLDING RNAV 1

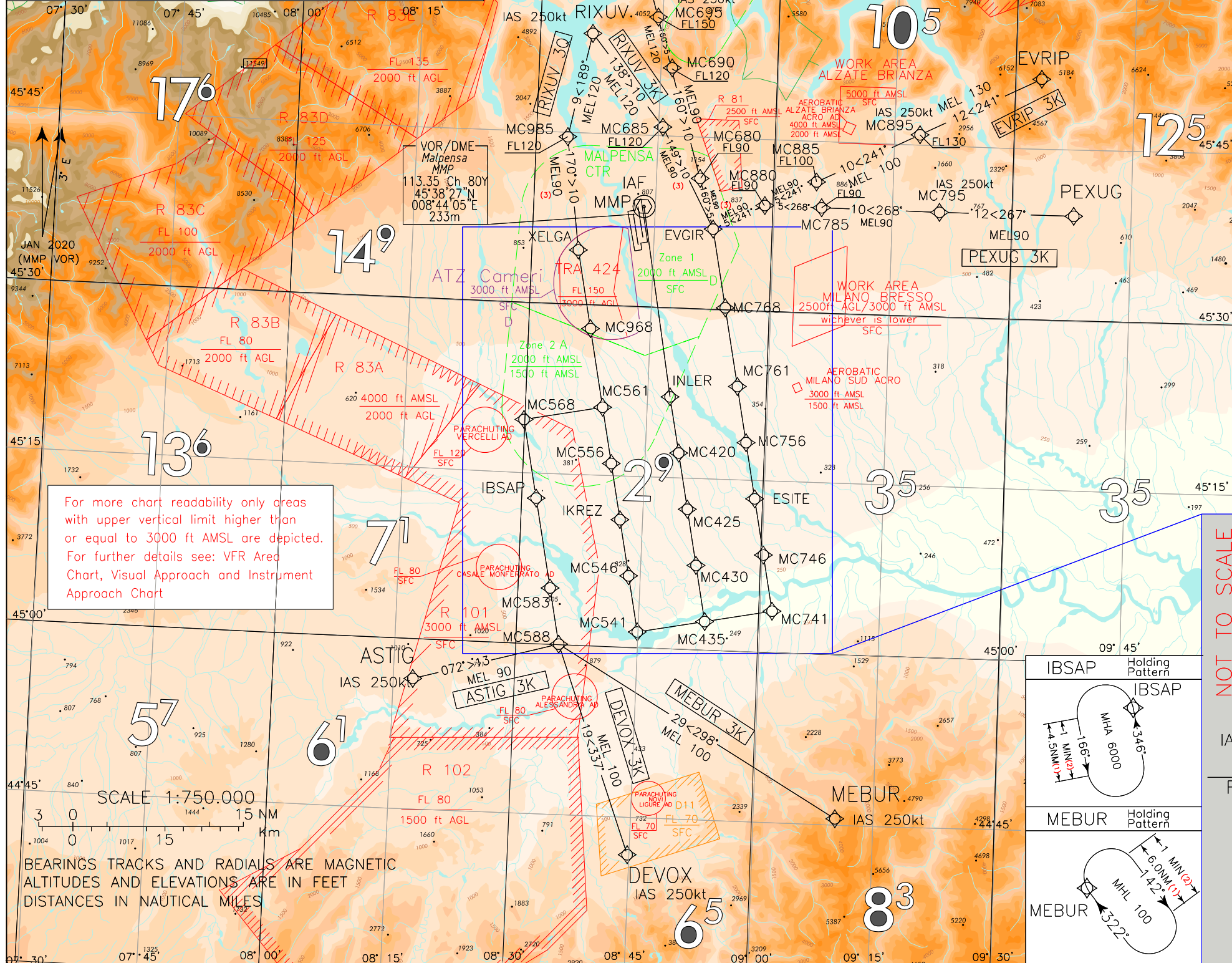
Path Terminator	Waypoint Identifier	Inbound Course °M (°T)	Leg Distance (NM) (1)	Timing(min./Waypoint Distance (NM) (2)	Turn Direction	Minimum Altitude (FT)	Maximum Altitude (FL)	Speed Limit (kt)	Magnetic Variation (°)	Navigation Specification
HM	ASTIG	084 (087.0)	6.0	1.0/ -	L	+FL100	-	-	3	RNAV1
HM	DEVOX	018 (021.0)	6.0	1.0/ -	L	+FL100	-	-	3	RNAV1
HM (4)	EVGIR	200 (203.0)	4.5	1.0/ -	L	+6000	-	-210	3	RNAV1
HM	EVRIP	303 (306.0)	6.5	1.0/ -	L	+FL130	-	-	3	RNAV1
HM	IBSAP	346 (348.9)	4.5	1.0/ -	L	+6000	-	-	3	RNAV1
HM	INLER	356 (359.0)	3.5	1.0/ -	R	+4000	-	-190	3	RNAV1
HM	MEBUR	322 (325.0)	6.0	1.0/ -	R	+FL100	-	-	3	RNAV1
HM	ESITE	195 (198.0)	4.0	1.0/ -	L	+5000 (3)	-	-210	3	RNAV1
HM	IKREZ	141 (144.0)	4.0	1.0/ -	R	+5000 (3)	-	-210	3	RNAV1
HM (4)	KUPBE	018 (021.0)	4.0	1.0/ -	L	+6000	-	-200	3	RNAV1
HM	PEXUG	288 (291.0)	6.0	1.0/ -	L	+FL90	-	-	3	RNAV1
HM (4)	VAFRA	038 (041.0)	3.0	- / -	R	+4500	-	-190	3	RNAV1
HM (4)	XELGA	141 (144.0)	4.5	1.0/ -	R	+6000	-	-210	3	RNAV1

- (1) RNAV system with holding functionality
(2) RNAV system without holding functionality
(3) MHA 4000FT ATC discretion
(4) Direct Entry Only

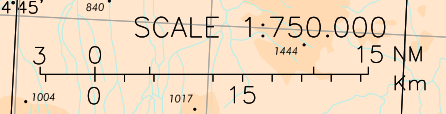
WAYPOINT LIST

Waypoint Identifier	Coordinates
MC420	45°17'15.67" N 008°49'20.14" E
MC425	45°12'21.00" N 008°50'40.41" E
MC430	45°07'26.31" N 008°52'00.44" E
MC435	45°02'31.60" N 008°53'20.24" E
MC541	45°01'23.49" N 008°45'01.43" E
MC546	45°06'18.10" N 008°43'40.95" E
MC556	45°16'07.26" N 008°40'59.27" E
MC561	45°21'01.81" N 008°39'38.09" E
MC568	45°19'41.13" N 008°29'53.51" E
MC583	45°04'57.79" N 008°33'58.89" E
MC588	45°00'03.27" N 008°35'20.06" E
MC680	45°41'50.53" N 008°50'32.55" E
MC685	45°45'51.66" N 008°45'50.46" E
MC690	45°51'24.73" N 008°46'23.38" E
MC695	45°56'11.80" N 008°44'18.25" E
MC741	45°03'39.07" N 009°01'39.11" E
MC746	45°08'33.88" N 009°00'19.99" E
MC756	45°18'23.43" N 008°57'41.08" E
MC761	45°23'18.18" N 008°56'21.28" E
MC768	45°30'10.79" N 008°54'29.17" E
MC785	45°39'16.19" N 009°06'07.05" E
MC795	45°39'12.00" N 009°20'55.00" E
MC880	45°39'17.52" N 008°58'59.2" E
MC885	45°41'31.29" N 009°05'22.34" E
MC895	45°45'57.72" N 009°18'10.09" E
MC968	45°27'54.18" N 008°37'44.29" E
MC985	45°44'41.31" N 008°33'56.69" E

IN CASE OF RADIO FAILURE:
 TRY TO ESTABLISH CONTACT ON ALTERNATIVE FREQUENCIES:
 APP:125.630MHZ - 126.750MHZ; EMERGENCY:121.500MHZ;
 TWR:128.350MHZ - 123.600MHZ;
 IF STILL UNABLE TO ESTABLISH CONTACT:
 - SQUAWK A7600
 - APPROACH CLEARANCE ALREADY RECEIVED: CONTINUE APPROACH ACCORDINGLY
 - APPROACH CLEARANCE NOT RECEIVED: MAINTAIN ASSIGNED LEVEL AND PROCEED
 ALONG ASSIGNED STAR, OR EXPECTED STAR IF NOT ASSIGNED, UNTIL MMP VOR.
 AT MMP VOR DESCEND TO MHA AND START APPROACH FOR RWY17L.
 REMARK: IF EAT HAS BEEN ISSUED, APPROACH SHALL START AT EAT.



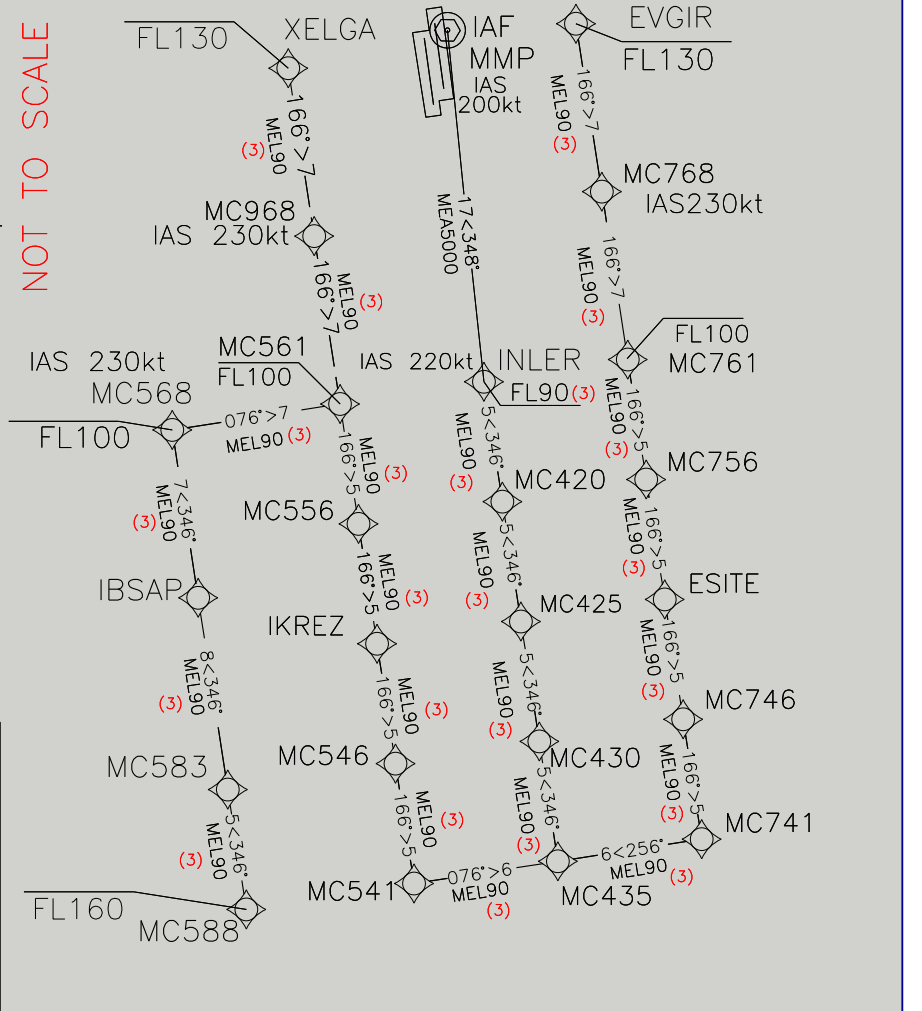
For more chart readability only areas with upper vertical limit higher than or equal to 3000 ft AMSL are depicted. For further details see: VFR Area Chart, Visual Approach and Instrument Approach Chart



BEARINGS TRACKS AND RADIALS ARE MAGNETIC
 ALTITUDES AND ELEVATIONS ARE IN FEET
 DISTANCES IN NAUTICAL MILES

LEGEND	REMARKS	ASTIG Holding Pattern	DEVOX Holding Pattern	MNM SECT ALT
← STAR ATC DISCRETION	(1) for RNAV system with Holding functionality (2) for RNAV system without Holding functionality (3) MEA 6000FT ATC Discretion (4) MHA 4000FT ATC Discretion			25 NM ARP 10300

MILANO/MALPENSA	
STAR RNAV1 RWY 17L/R ATC discretion	
TRANSITION ALT 6000	
FREQUENCIES	
APP Milano Radar	126.750 (N) CH 125.630 (S)
TWR Malpensa TWR (17R/35L)	128.350
Malpensa TWR (17L/35R)	123.600
ATIS Malpensa Arrival Information	120.025
MMP VOR Holding Pattern	XELGA Holding Pattern
INLER Holding Pattern	IKREZ Holding Pattern



CHANGE: TWR FREQ UPDATED AND RENUMBERED PAGE

MILANO /MALPENSA
STAR RNAV 1 RWY17 L/R
ATC discretion

ASTIG 3K (ATC discretion)

Path Terminator	Waypoint Identifier	Fly Over	Course °M(°T)	Magnetic Variation	Distance (NM)	Turn Direction	Altitude (ft)	Speed Limit (kt)	Navigation Specification
IF	ASTIG	-	-	-	-	-	-	250	RNAV1
TF	MC588	-	072 (074.3)	-	13.2	-	-FL160 +FL90	-	RNAV1
TF	MC583	-	346 (349.0)	-	5.0	L	+FL90 (1)	-	RNAV1
TF	IBSAP	-	346 (348.9)	-	8.0	-	+FL90 (1)	-	RNAV1
TF	MC568	-	346 (348.9)	-	7.0	-	-FL100 +FL90 (1)	230	RNAV1
TF	MC561	-	076 (078.9)	-	7.0	R	-FL100 +FL90 (1)	-	RNAV1
TF	MC556	-	166 (169.0)	-	5.0	R	+FL90 (1)	-	RNAV1
TF	IKREZ	-	166 (169.0)	-	5.0	-	+FL90 (1)	-	RNAV1
TF	MC546	-	166 (169.0)	-	5.0	-	+FL90 (1)	-	RNAV1
TF	MC541	-	166 (169.0)	-	5.0	-	+FL90 (1)	-	RNAV1
TF	MC435	-	076 (079.1)	-	6.0	L	+FL90 (1)	-	RNAV1
TF	MC430	-	346 (349.1)	-	5.0	L	+FL90 (1)	-	RNAV1
TF	MC425	-	346 (349.1)	-	5.0	-	+FL90 (1)	-	RNAV1
TF	MC420	-	346 (349.1)	-	5.0	-	+FL90 (1)	-	RNAV1
TF	INLER	-	346 (349.1)	-	5.0	-	+FL90 (1)	220	RNAV1
TF	MMP	-	348 (350.4)	-	16.5	-	+5000	200	RNAV1

(1) +6000FT ATC discretion

DEVOX 3K (ATC discretion)

Path Terminator	Waypoint Identifier	Fly Over	Course °M(°T)	Magnetic Variation	Distance (NM)	Turn Direction	Altitude (ft)	Speed Limit (kt)	Navigation Specification
IF	DEVOX	-	-	-	-	-	-	250	RNAV1
TF	MC588	-	337 (339.8)	-	19.5	-	-FL160 +FL100	-	RNAV1
TF	MC583	-	346 (349.0)	-	5.0	-	+FL90 (1)	-	RNAV1
TF	IBSAP	-	346 (348.9)	-	8.0	-	+FL90 (1)	-	RNAV1
TF	MC568	-	346 (348.9)	-	7.0	-	-FL100 +FL90 (1)	230	RNAV1
TF	MC561	-	076 (078.9)	-	7.0	R	-FL100 +FL90 (1)	-	RNAV1
TF	MC556	-	166 (169.0)	-	5.0	R	+FL90 (1)	-	RNAV1
TF	IKREZ	-	166 (169.0)	-	5.0	-	+FL90 (1)	-	RNAV1
TF	MC546	-	166 (169.0)	-	5.0	-	+FL90 (1)	-	RNAV1
TF	MC541	-	166 (169.0)	-	5.0	-	+FL90 (1)	-	RNAV1
TF	MC435	-	076 (079.1)	-	6.0	L	+FL90 (1)	-	RNAV1
TF	MC430	-	346 (349.1)	-	5.0	L	+FL90 (1)	-	RNAV1
TF	MC425	-	346 (349.1)	-	5.0	-	+FL90 (1)	-	RNAV1
TF	MC420	-	346 (349.1)	-	5.0	-	+FL90 (1)	-	RNAV1
TF	INLER	-	346 (349.1)	-	5.0	-	+FL90 (1)	220	RNAV1
TF	MMP	-	348 (350.4)	-	16.5	-	+5000	200	RNAV1

(1) +6000FT ATC discretion

EVRIP 3K (ATC discretion)

Path Terminator	Waypoint Identifier	Fly Over	Course °M(°T)	Magnetic Variation	Distance (NM)	Turn Direction	Altitude (ft)	Speed Limit (kt)	Navigation Specification
IF	EVRIP	-	-	-	-	-	-	-	RNAV1
TF	MC895	-	241 (243.9)	-	11.9	-	+FL130	250	RNAV1
TF	MC885	-	241 (243.7)	-	10.0	-	+FL100	-	RNAV1
TF	MC880	-	241 (243.6)	-	5.0	-	+FL90	-	RNAV1
TF	EVGIR	-	241 (243.5)	-	5.0	-	-FL130 +FL90 (1)	-	RNAV1
TF	MC768	-	166 (169.1)	-	7.0	-	+FL90 (1)	230	RNAV1
TF	MC761	-	166 (169.2)	-	7.0	-	-FL100 +FL90 (1)	-	RNAV1
TF	MC756	-	166 (169.2)	-	5.0	-	+FL90 (1)	-	RNAV1
TF	ESITE	-	166 (169.2)	-	5.0	-	+FL90 (1)	-	RNAV1
TF	MC746	-	166 (169.2)	-	5.0	-	+FL90 (1)	-	RNAV1
TF	MC741	-	166 (169.2)	-	5.0	-	+FL90 (1)	-	RNAV1
TF	MC435	-	256 (259.2)	-	6.0	R	+FL90 (1)	-	RNAV1
TF	MC430	-	346 (349.1)	-	5.0	R	+FL90 (1)	-	RNAV1
TF	MC425	-	346 (349.1)	-	5.0	-	+FL90 (1)	-	RNAV1
TF	MC420	-	346 (349.1)	-	5.0	-	+FL90 (1)	-	RNAV1
TF	INLER	-	346 (349.1)	-	5.0	-	+FL90 (1)	220	RNAV1
TF	MMP	-	348 (350.4)	-	16.5	-	+5000	200	RNAV1

(1) +6000FT ATC discretion

MEBUR 3K (ATC discretion)

Path Terminator	Waypoint Identifier	Fly Over	Course °M(°T)	Magnetic Variation	Distance (NM)	Turn Direction	Altitude (ft)	Speed Limit (kt)	Navigation Specification
IF	MEBUR	-	-	-	-	-	-	250	RNAV1
TF	MC588	-	298 (300.4)	-	28.8	-	-FL160 +FL100	-	RNAV1
TF	MC583	-	346 (349.0)	-	5.0	-	+FL90 (1)	-	RNAV1
TF	IBSAP	-	346 (348.9)	-	8.0	-	+FL90 (1)	-	RNAV1
TF	MC568	-	346 (348.9)	-	7.0	-	-FL100 +FL90 (1)	230	RNAV1
TF	MC561	-	076 (078.9)	-	7.0	R	-FL100 +FL90 (1)	-	RNAV1
TF	MC556	-	166 (169.0)	-	5.0	R	+FL90 (1)	-	RNAV1
TF	IKREZ	-	166 (169.0)	-	5.0	-	+FL90 (1)	-	RNAV1
TF	MC546	-	166 (169.0)	-	5.0	-	+FL90 (1)	-	RNAV1
TF	MC541	-	166 (169.0)	-	5.0	-	+FL90 (1)	-	RNAV1
TF	MC435	-	076 (079.1)	-	6.0	L	+FL90 (1)	-	RNAV1
TF	MC430	-	346 (349.1)	-	5.0	L	+FL90 (1)	-	RNAV1
TF	MC425	-	346 (349.1)	-	5.0	-	+FL90 (1)	-	RNAV1
TF	MC420	-	346 (349.1)	-	5.0	-	+FL90 (1)	-	RNAV1
TF	INLER	-	346 (349.1)	-	5.0	-	+FL90 (1)	220	RNAV1
TF	MMP	-	348 (350.4)	-	16.5	-	+5000	200	RNAV1

(1) +6000FT ATC discretion

ODINA 3K (ATC discretion)

Path Terminator	Waypoint Identifier	Fly Over	Course °M(°T)	Magnetic Variation	Distance (NM)	Turn Direction	Altitude (ft)	Speed Limit (kt)	Navigation Specification
IF	ODINA	-	-	-	-	-	-	-	RNAV1
TF	MC695	-	160 (163.0)	-	10.5	-	+FL150	250	RNAV1
TF	MC690	-	160 (163.1)	-	5.0	-	+FL120	-	RNAV1
TF	MC680	-	160 (163.1)	-	10.0	-	+FL90	-	RNAV1
TF	EVGIR	-	160 (163.1)	-	5.0	-	-FL130 +FL90 (1)	-	RNAV1
TF	MC768	-	166 (169.1)	-	7.0	-	+FL90 (1)	230	RNAV1
TF	MC761	-	166 (169.2)	-	7.0	-	-FL100 +FL90 (1)	-	RNAV1
TF	MC756	-	166 (169.2)	-	5.0	-	+FL90 (1)	-	RNAV1
TF	ESITE	-	166 (169.2)	-	5.0	-	+FL90 (1)	-	RNAV1
TF	MC746	-	166 (169.2)	-	5.0	-	+FL90 (1)	-	RNAV1
TF	MC741	-	166 (169.2)	-	5.0	-	+FL90 (1)	-	RNAV1
TF	MC435	-	256 (259.2)	-	6.0	R	+FL90 (1)	-	RNAV1
TF	MC430	-	346 (349.1)	-	5.0	R	+FL90 (1)	-	RNAV1
TF	MC425	-	346 (349.1)	-	5.0	-	+FL90 (1)	-	RNAV1
TF	MC420	-	346 (349.1)	-	5.0	-	+FL90 (1)	-	RNAV1
TF	INLER	-	346 (349.1)	-	5.0	-	+FL90 (1)	220	RNAV1
TF	MMP	-	348 (350.4)	-	16.5	-	+5000	200	RNAV1

(1) +6000FT ATC discretion

PEXUG 3K (ATC discretion)

Path Terminator	Waypoint Identifier	Fly Over	Course °M(°T)	Magnetic Variation	Distance (NM)	Turn Direction	Altitude (ft)	Speed Limit (kt)	Navigation Specification
IF	PEXUG	-	-	-	-	-	-	-	RNAV1
TF	MC795	-	267 (270.1)	-	11.8	-	+FL90	250	RNAV1
TF	MC785	-	268 (270.5)	-	10.4	-	+FL90	-	RNAV1
TF	MC880	-	268 (270.3)	-	5.0	-	+FL90	-	RNAV1
TF	EVGIR	-	241 (243.5)	-	5.0	-	-FL130 +FL90 (1)	-	RNAV1
TF	MC768	-	166 (169.1)	-	7.0	-	+FL90 (1)	230	RNAV1
TF	MC761	-	166 (169.2)	-	7.0	-	-FL100 +FL90 (1)	-	RNAV1
TF	MC756	-	166 (169.2)	-	5.0	-	+FL90 (1)	-	RNAV1
TF	ESITE	-	166 (169.2)	-	5.0	-	+FL90 (1)	-	RNAV1
TF	MC746	-	166 (169.2)	-	5.0	-	+FL90 (1)	-	RNAV1
TF	MC741	-	166 (169.2)	-	5.0	-	+FL90 (1)	-	RNAV1
TF	MC435	-	256 (259.2)	-	6.0	R	+FL90 (1)	-	RNAV1
TF	MC430	-	346 (349.1)	-	5.0	R	+FL90 (1)	-	RNAV1
TF	MC425	-	346 (349.1)	-	5.0	-	+FL90 (1)	-	RNAV1
TF	MC420	-	346 (349.1)	-	5.0	-	+FL90 (1)	-	RNAV1
TF	INLER	-	346 (349.1)	-	5.0	-	+FL90 (1)	220	RNAV1
TF	MMP	-	348 (350.4)	-	16.5	-	+5000	200	RNAV1

(1) +6000FT ATC discretion

RIXUV 3K (ATC discretion)

Path Terminator	Waypoint Identifier	Fly Over	Course °M(°T)	Magnetic Variation	Distance (NM)	Turn Direction	Altitude (ft)	Speed Limit (kt)	Navigation Specification
IF	RIXUV	-	-	-	-	-	-	250	RNAV1
TF	MC685	-	138 (140.9)	-	10.3	-	+FL120	-	RNAV1
TF	EVGIR	-	149 (151.6)	-	10.0	-	-FL130 +FL90 (1)	-	RNAV1
TF	MC768	-	166 (169.1)	-	7.0	-	+FL90 (1)	230	RNAV1
TF	MC761	-	166 (169.2)	-	7.0	-	-FL100 +FL90 (1)	-	RNAV1
TF	MC756	-	166 (169.2)	-	5.0	-	+FL90 (1)	-	RNAV1
TF	ESITE	-	166 (169.2)	-	5.0	-	+FL90 (1)	-	RNAV1
TF	MC746	-	166 (169.2)	-	5.0	-	+FL90 (1)	-	RNAV1
TF	MC741	-	166 (169.2)	-	5.0	-	+FL90 (1)	-	RNAV1
TF	MC435	-	256 (259.2)	-	6.0	R	+FL90 (1)	-	RNAV1
TF	MC430	-	346 (349.1)	-	5.0	R	+FL90 (1)	-	RNAV1
TF	MC425	-	346 (349.1)	-	5.0	-	+FL90 (1)	-	RNAV1
TF	MC420	-	346 (349.1)	-	5.0	-	+FL90 (1)	-	RNAV1
TF	INLER	-	346 (349.1)	-	5.0	-	+FL90 (1)	220	RNAV1
TF	MMP	-	348 (350.4)	-	16.5	-	+5000	200	RNAV1

(1) +6000FT ATC discretion

RIXUV 3Q (ATC discretion)

Path Terminator	Waypoint Identifier	Fly Over	Course °M(°T)	Magnetic Variation	Distance (NM)	Turn Direction	Altitude (ft)	Speed Limit (kt)	Navigation Specification
IF	RIXUV	-	-	-	-	-	-	250	RNAV1
TF	MC985	-	189 (191.4)	-	9.3	-	+FL120	-	RNAV1
TF	XELGA	-	170 (172.4)	-	10.0	-	-FL130 +FL90 (1)	-	RNAV1
TF	MC968	-	166 (169.0)	-	7.0	-	+FL90 (1)	230	RNAV1
TF	MC561	-	166 (169.0)	-	7.0	-	-FL100 +FL90 (1)	-	RNAV1
TF	MC556	-	166 (169.0)	-	5.0	-	+FL90 (1)	-	RNAV1
TF	IKREZ	-	166 (169.0)	-	5.0	-	+FL90 (1)	-	RNAV1
TF	MC546	-	166 (169.0)	-	5.0	-	+FL90 (1)	-	RNAV1
TF	MC541	-	166 (169.0)	-	5.0	-	+FL90 (1)	-	RNAV1
TF	MC435	-	076 (079.1)	-	6.0	L	+FL90 (1)	-	RNAV1
TF	MC430	-	346 (349.1)	-	5.0	L	+FL90 (1)	-	RNAV1
TF	MC425	-	346 (349.1)	-	5.0	-	+FL90 (1)	-	RNAV1
TF	MC420	-	346 (349.1)	-	5.0	-	+FL90 (1)	-	RNAV1
TF	INLER	-	346 (349.1)	-	5.0	-	+FL90 (1)	220	RNAV1
TF	MMP	-	348 (350.4)	-	16.5	-	+5000	200	RNAV1

(1) +6000FT ATC discretion

HOLDING RNAV 1

Path Terminator	Waypoint Identifier	Inbound Course °M (°T)	Leg Distance (NM) (1)	Timing(min.)/ Waypoint Distance (NM) (2)	Turn Direction	Minimum Altitude (FT)	Maximum Altitude (FL)	Speed Limit (kt)	Magnetic Variation (°)	Navigation Specification
HM	ASTIG	084 (087.0)	6.0	1.0/ -	L	+FL100	-	-	3	RNAV1
HM	DEVOX	018 (021.0)	6.0	1.0/ -	L	+FL100	-	-	3	RNAV1
HM	ESITE	195 (198.0)	4.0	1.0/ -	L	+5000 (3)	-	-210	3	RNAV1
HM (4)	EVGIR	200 (203.0)	4.5	1.0/ -	L	+6000	-	-210	3	RNAV1
HM	EVRIP	303 (306.0)	6.5	1.0/ -	L	+FL130	-	-	3	RNAV1
HM	IBSAP	346 (348.9)	4.5	1.0/ -	L	+6000	-	-	3	RNAV1
HM	IKREZ	141 (144.0)	4.0	1.0/ -	R	+5000 (3)	-	-210	3	RNAV1
HM	INLER	356 (359.0)	3.5	1.0/ -	R	+4000	-	-190	3	RNAV1
HM	MEBUR	322 (325.0)	6.0	1.0/ -	R	+FL100	-	-	3	RNAV1
HM	MMP	316 (319.0)	4.5	1.0/ -	R	+5000	-	-210	3	RNAV1
HM	PEXUG	288 (291.0)	6.0	1.0/ -	L	+FL90	-	-	3	RNAV1
HM (4)	XELGA	141 (144.0)	4.5	1.0/ -	R	+6000	-	-210	3	RNAV1

- (1) RNAV system with holding functionality
(2) RNAV system without holding functionality
(3) MHA 4000FT ATC discretion
(4) Direct Entry Only

WAYPOINT LIST

Waypoint Identifier	Coordinates
MC420	45°17'15.67" N 008°49'20.14" E
MC425	45°12'21.00" N 008°50'40.41" E
MC430	45°07'26.31" N 008°52'00.44" E
MC435	45°02'31.60" N 008°53'20.24" E
MC541	45°01'23.49" N 008°45'01.43" E
MC546	45°06'18.10" N 008°43'40.95" E
MC556	45°16'07.26" N 008°40'59.27" E
MC561	45°21'01.81" N 008°39'38.09" E
MC568	45°19'41.13" N 008°29'53.51" E
MC583	45°04'57.79" N 008°33'58.89" E
MC588	45°00'03.27" N 008°35'20.06" E
MC680	45°41'50.53" N 008°50'32.55" E
MC685	45°45'51.66" N 008°45'50.46" E
MC690	45°51'24.73" N 008°46'23.38" E
MC695	45°56'11.80" N 008°44'18.25" E
MC741	45°03'39.07" N 009°01'39.11" E
MC746	45°08'33.88" N 009°00'19.99" E
MC756	45°18'23.43" N 008°57'41.08" E
MC761	45°23'18.18" N 008°56'21.28" E
MC768	45°30'10.79" N 008°54'29.17" E
MC785	45°39'16.19" N 009°06'07.05" E
MC795	45°39'12.00" N 009°20'55.00" E
MC880	45°39'17.52" N 008°58'59.2" E
MC885	45°41'31.29" N 009°05'22.34" E
MC895	45°45'57.72" N 009°18'10.09" E
MC968	45°27'54.18" N 008°37'44.29" E
MC985	45°44'41.31" N 008°33'56.69" E

MILANO/MALPENSA

STAR RWY 35 L/R

Able to be planned only for aircraft
NOT RNAV equipped

TRANSITION ALT 6000

REMARKS:

- (1) MEA 6000FT ATC Discretion
- (2) MEA 4000FT ATC Discretion

FREQUENCIES

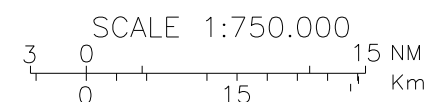
APP	Milano Radar	126.750 (N) CH 125.630 (S)
TWR	Malpensa TWR (17R/35L)	128.350
TWR	Malpensa TWR (17L/35R)	123.600
ATIS	Malpensa Arrival Information	120.025

NOBKE	Holding Pattern	RIGON	Holding Pattern
IAS MAX 280KT MHA is 5000 FT		MAX Holding Altitude 6000FT higher levels ATC discretion only	
SRN	Holding Pattern	VOG	Holding Pattern
IAS MAX 280 KT MHL is FL 70 or transition level if higher			

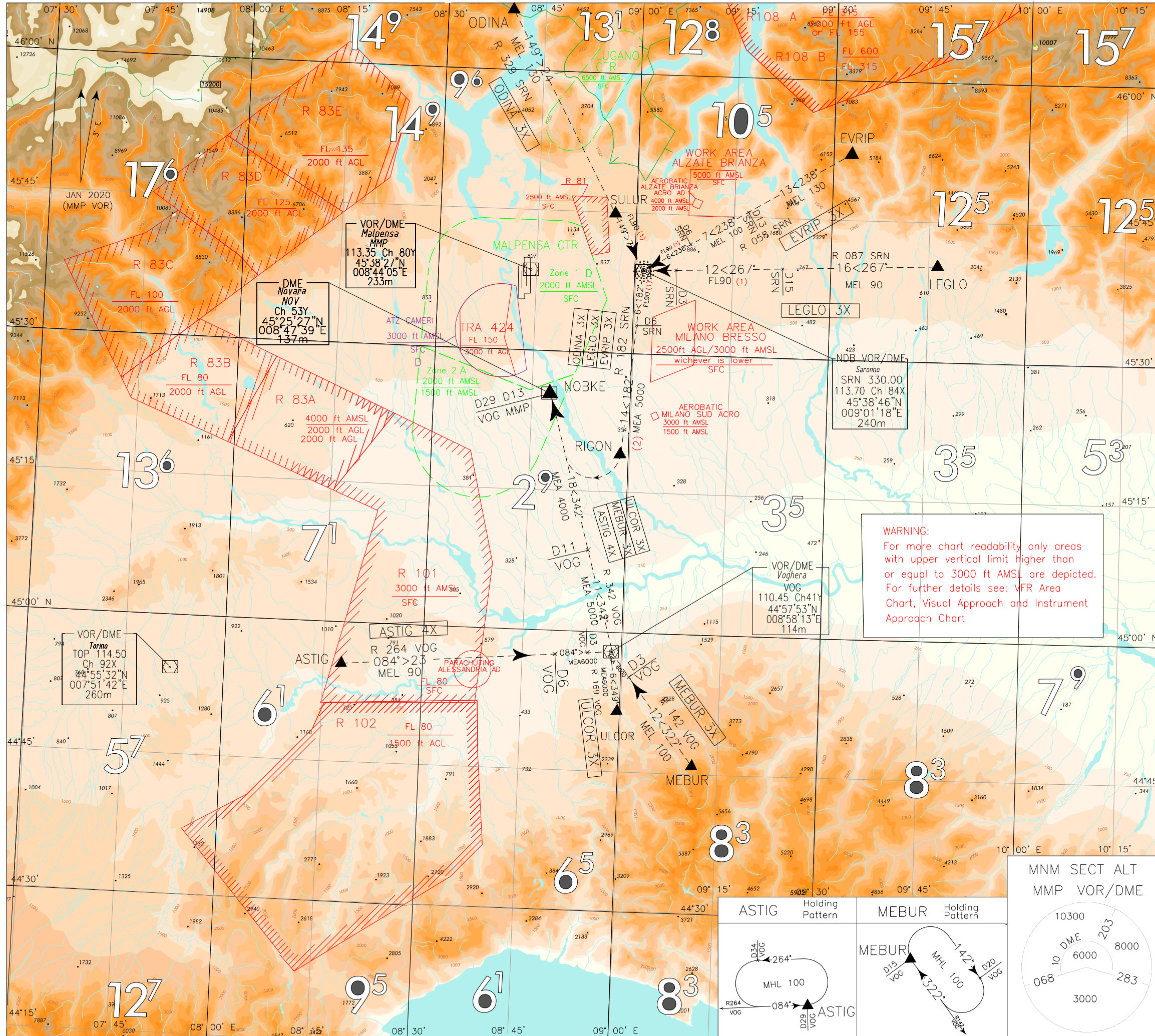
LEGEND

- STAR
- - - STAR ATC DISCRETION

BEARINGS TRACKS AND RADIALS ARE MAGNETIC
ALTITUDES AND ELEVATIONS ARE IN FEET
DISTANCES IN NAUTICAL MILES

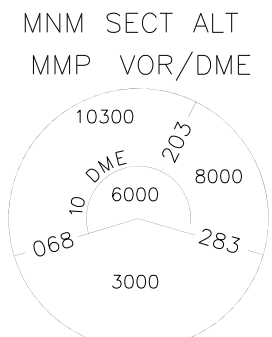


CHANGE: TWR FREQ UPDATED AND RENUMBERED PAGE



WARNING:
For more chart readability only areas
with upper vertical limit higher than
or equal to 3000 ft AMSL are depicted.
For further details see: VFR Area
Chart, Visual Approach and Instrument
Approach Chart

ASTIG	Holding Pattern	MEBUR	Holding Pattern



STAR RWY35L/R Milano Malpensa**REMARK 1**

The below STARs are able to be planned for aircraft NOT RNAV equipped.

REMARK 2

For the below STARs, speed limitations are applied as described in ENR 2.1.1.1

ASTIG 4X (ATC discretion)

ASTIG proceed on TR 084° (RDL 264 VOG VOR or RDL 084 TOP VOR) until 3 NM VOG DME, then turn left on TR 342° (RDL 342 VOG VOR) direct to NOBKE (INT RDL 342/29 NM VOG VOR/DME or INT RDL 166/13 NM MMP VOR/DME).

MEL/MEA: ASTIG – INT RDL 264/6 NM VOG VOR/DME: FL 90; INT RDL 264/6 NM VOG VOR/DME – VOG VOR/DME: 6000 FT; VOG VOR/DME – INT RDL 342/11 NM VOG VOR/DME: 5000 FT;
INT RDL 342/11 NM VOG VOR/DME – NOBKE: 4000 FT

EVRIP 3X (ATC discretion)

EVRIP proceed on TR 238° (RDL/QDR 058 SRN VOR NDB) bound to SRN VOR NDB/DME, then turn left on TR 182° (RDL/QDR 182 SRN VOR NDB) bound to RIGON (INT RDL/QDR 182/20 NM SRN VOR NDB/DME), then turn right to intercept and follow RDL 342 VOG VOR (TR 342°) direct to NOBKE (INT RDL 342/29 NM VOG VOR/DME or INT RDL 166/13 NM MMP VOR/DME).

MEL/MEA: EVRIP – RDL/QDR 058/13 NM SRN VOR NDB/DME: FL130; RDL/QDR 058/13 NM SRN VOR NDB/DME – RDL/QDR 058/6 NM SRN VOR NDB/DME: FL100;

RDL/QDR 058/6 NM SRN VOR NDB/DME – RDL/QDR 182/6 NM SRN VOR NDB/DME: FL90 (6000FT ATC discretion);
RDL/QDR 182/6 NM SRN VOR NDB/DME – RIGON: 5000FT (4000FT ATC discretion); RIGON – NOBKE: 4000FT

LEGLO 3X (ATC discretion)

LEGLO proceed on TR 267° (RDL/QDR 087 SRN VOR NDB) until 3 NM VOG DME, then turn left on TR 182° (RDL/QDR 182 SRN VOR NDB) bound to RIGON (INT RDL/QDR 182/20 NM SRN VOR NDB/DME), then turn right to intercept and follow RDL 342 VOG VOR (TR 342°) direct to NOBKE (INT RDL 342/29 NM VOG VOR/DME or INT RDL 166/13 NM MMP VOR/DME).

MEL/MEA: LEGLO – RDL/QDR 087/15 NM SRN VOR NDB/DME: FL 90; RDL/QDR 087/15 NM SRN VOR NDB/DME – RDL/QDR 182/6 NM SRN VOR NDB/DME: FL90 (6000FT ATC discretion);

RDL/QDR 182/6 NM SRN VOR NDB/DME – RIGON: 5000 FT (4000 FT ATC discretion);
RIGON – NOBKE: 4000 FT

MEBUR 3X (ATC discretion)

MEBUR proceed on TR 322° (RDL 142 VOG VOR) bound to VOG VOR/DME, then turn right on TR 342° (RDL 342 VOG VOR) direct to NOBKE (INT RDL 342/29 NM VOG VOR/DME or INT RDL 166/13 NM MMP VOR/DME).

MEL/MEA: MEBUR – RDL 142/3 NM VOG VOR/DME: FL100; RDL 142/3 NM VOG VOR/DME – VOG VOR/DME: 6000FT; VOG VOR/DME – INT RDL 342/11 NM VOG VOR/DME: 5000 FT;
INT RDL 342/11 NM VOG VOR/DME – NOBKE: 4000 FT

ODINA 3X (ATC discretion)

ODINA proceed on TR 149° (RDL/QDR 329 SRN VOR NDB) via SULUR (INT RDL/QDR 329/7 NM SRN VOR NDB/DME) bound to SRN VOR NDB/DME, then turn right on TR 182° (RDL/QDR 182 SRN VOR NDB) bound to RIGON (INT RDL/QDR 182/20 NM SRN VOR NDB/DME), then turn right to intercept and follow RDL 342 VOG VOR (TR 342°) direct to NOBKE (INT RDL 342/29 NM VOG VOR/DME or INT RDL 166/13 NM MMP VOR/DME).

MEL/MEA: ODINA – SULUR: FL 130; SULUR – RDL/QDR 182/6 NM SRN VOR NDB/DME: FL90 (6000FT ATC discretion);
RDL/QDR 182/6 NM SRN VOR NDB/DME – RIGON: 5000 FT (4000 FT ATC discretion); RIGON – NOBKE: 4000 FT

ULCOR 3X (ATC discretion)

ULCOR proceed on TR 349° (RDL 169 VOG VOR) bound to VOG VOR/DME, then proceed on TR 342° (RDL 342 VOG VOR) direct to NOBKE (INT RDL 342/29 NM VOG VOR/DME or INT RDL 166/13 NM MMP VOR/DME).

MEL/MEA: ULCOR – VOG VOR/DME: 6000FT; VOG VOR/DME – INT RDL 342/11 NM VOG VOR/DME: 5000 FT; INT RDL 342/11 NM VOG VOR/DME – NOBKE: 4000 FT

Intenzionalmente bianca

Intentionally left blank

MILANO/MALPENSA

STAR RWY 17L

Able to be planned only for aircraft
NOT RNAV equipped

TRANSITION ALT 6000

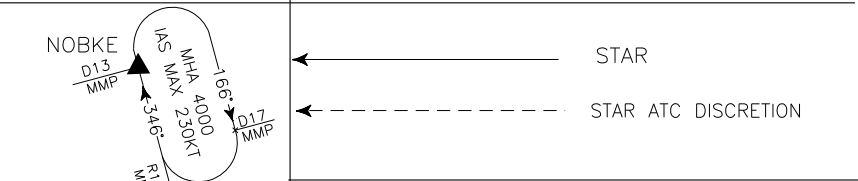
FREQUENCIES

APP	Milano Radar	126.750 (N) CH 125.630 (S)
TWR	Malpensa TWR (17R/35L)	128.350
TWR	Malpensa TWR (17L/35R)	123.600
ATIS	Malpensa Arrival Information	120.025

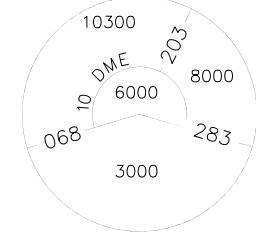
MMP	Holding Pattern	RIGON	Holding Pattern
SRN	Holding Pattern	VOG	Holding Pattern

WARNING:
For more chart readability only areas with upper vertical limit higher than or equal to 3000 ft AMSL are depicted. For further details see: VFR Area Chart, Visual Approach and Instrument Approach Chart

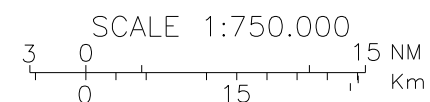
LEGEND



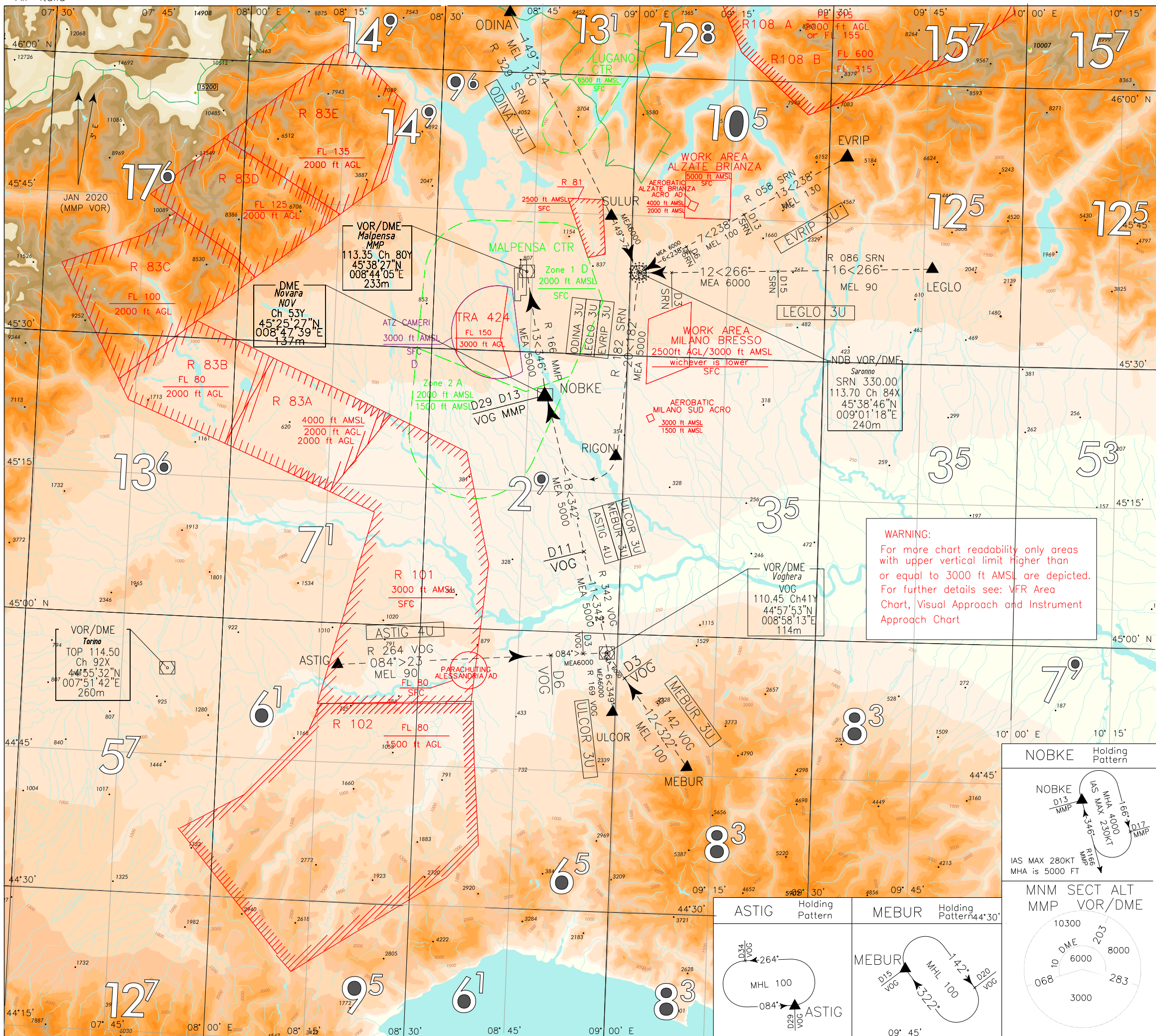
MNM SECT ALT



BEARINGS TRACKS AND RADIALS ARE MAGNETIC
ALTITUDES AND ELEVATIONS ARE IN FEET
DISTANCES IN NAUTICAL MILES



CHANGE: TWR FREQ UPDATED AND RENUMBERED PAGE



STAR RWY17L Milano Malpensa**REMARK 1**

The below STARs are able to be planned for aircraft NOT RNAV equipped.

REMARK 2

For the below STARs, speed limitations are applied as described in ENR 2.1.1.1

ASTIG 4U (ATC discretion)

ASTIG proceed on TR 084° (RDL 264 VOG VOR or RDL 084 TOP VOR) until 3 NM VOG DME, then turn left on TR 342° (RDL 342 VOG VOR) direct to NOBKE (INT RDL 342/29 NM VOG VOR/DME or INT RDL 166/13 NM MMP VOR/DME), then proceed on TR 346° (RDL 166 MMP VOR) direct to MMP VOR/DME.

MEL/MEA: ASTIG – INT RDL 264/6 NM VOG VOR/DME: FL 90; INT RDL 264/6 NM VOG VOR/DME – VOG VOR/DME: 6000 FT; VOG VOR/DME – MMP VOR/DME: 5000 FT

EVRIIP 3U (ATC discretion)

EVRIIP proceed on TR 238° (RDL/QDR 058 SRN VOR NDB) bound to SRN VOR NDB/DME, then turn left on TR 182° (RDL/QDR 182 SRN VOR NDB) bound to RIGON (INT RDL/QDR 182/20 NM SRN VOR NDB/DME), then turn right to intercept and follow RDL 342 VOG VOR (TR 342°) direct to NOBKE (INT RDL 342/29 NM VOG VOR/DME or INT RDL 166/13 NM MMP VOR/DME), then proceed on TR 346° (RDL 166 MMP VOR) direct to MMP VOR/DME.

MEL/MEA: EVRIIP – RDL/QDR 058/13 NM SRN VOR NDB/DME: FL 130; RDL/QDR 058/13 NM SRN VOR NDB/DME – RDL/QDR 058/6 NM SRN VOR NDB/DME: FL 100; RDL/QDR 058/6 NM SRN VOR NDB/DME – SRN VOR NDB/DME: 6000FT; SRN VOR NDB/DME – MMP VOR /DME: 5000 FT

LEGLO 3U (ATC discretion)

LEGLO proceed on TR 267° (RDL/QDR 087 SRN VOR NDB) until 3 NM VOG DME, then turn left on TR 182° (RDL/QDR 182 SRN VOR NDB) bound to RIGON (INT RDL/QDR 182/20 NM SRN VOR NDB/DME), then turn right to intercept and follow RDL 342 VOG VOR (TR 342°) direct to NOBKE (INT RDL 342/29 NM VOG VOR/DME or INT RDL 166/13 NM MMP VOR/DME), then proceed on TR 346° (RDL 166 MMP VOR) direct to MMP VOR/DME.

MEL/MEA: LEGLO – RDL/QDR 086/15 NM SRN VOR NDB/DME: FL 90; RDL/QDR 086/15 NM SRN VOR NDB/DME – SRN VOR NDB/DME: 6000 FT; SRN VOR NDB/DME – MMP VOR/DME: 5000 FT

MEBUR 3U (ATC discretion)

MEBUR proceed on TR 322° (RDL 142 VOG VOR) bound to VOG VOR/DME, then turn right on TR 342° (RDL 342 VOG VOR direct to NOBKE (INT RDL 342/29 NM VOG VOR/DME or INT RDL 166/13 NM MMP VOR/DME), then proceed on TR 346° (RDL 166 MMP VOR) direct to MMP VOR/DME.

MEL/MEA: MEBUR – RDL 142/3 NM VOG VOR/DME: FL100; RDL 142/3 NM VOG VOR/DME – VOG VOR/DME: 6000FT; VOG VOR/DME – MMP VOR/DME: 5000 FT

ODINA 3U (ATC discretion)

ODINA proceed on TR 149° (RDL/QDR 329 SRN VOR NDB) via SULUR (INT RDL/QDR 329/7 NM SRN VOR NDB/DME) bound to SRN VOR NDB/DME, then turn right on TR 182° (RDL/QDR 182 SRN VOR NDB) bound to RIGON (INT RDL/QDR 182/20 NM SRN VOR NDB/DME), then turn right to intercept and follow RDL 342 VOG VOR (TR 342°) direct to NOBKE (INT RDL 342/29 NM VOG VOR/DME or INT RDL 166/13 NM MMP VOR/DME), then proceed on TR 346° (RDL 166 MMP VOR) direct to MMP VOR DME.

MEL/MEA: ODINA – SULUR: FL 130; SULUR – SRN VOR NDB/DME: 6000FT; SRN VOR NDB/DME – MMP VOR/DME: 5000 FT

ULCOR 3U (ATC discretion)

ULCOR proceed on TR 349° (RDL 169 VOG VOR) bound to VOG VOR/DME, then proceed on TR 342° (RDL 342 VOG VOR) direct to NOBKE (INT RDL 342/29 NM VOG VOR/DME or INT RDL 166/13 NM MMP VOR/DME), then proceed on TR 346° (RDL 166 MMP VOR) direct to MMP VOR/DME.

MEL/MEA: ULCOR – VOG VOR/DME: 6000FT; VOG VOR/DME – MMP VOR/DME: 5000 FT

Intenzionalmente bianca

Intentionally left blank