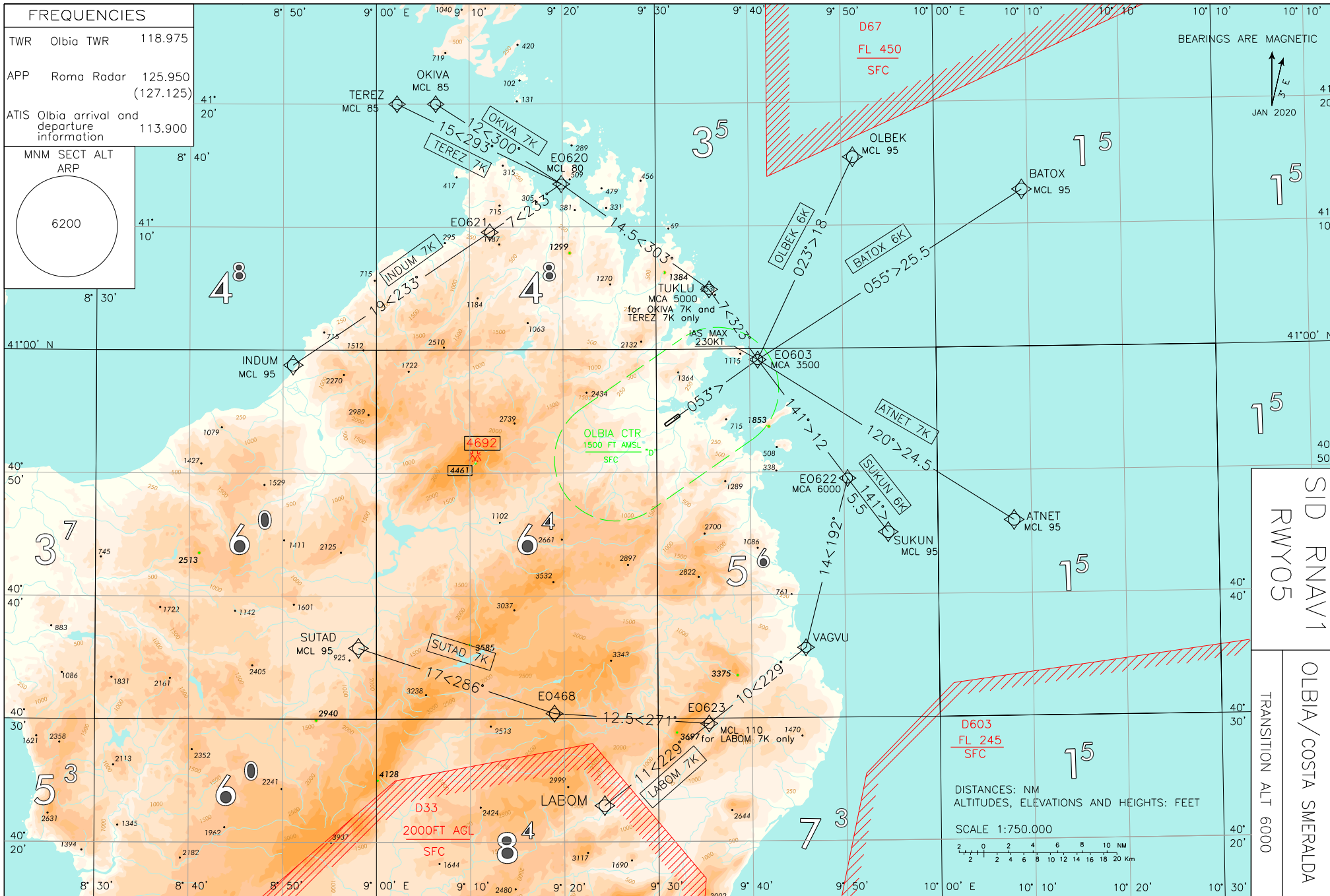


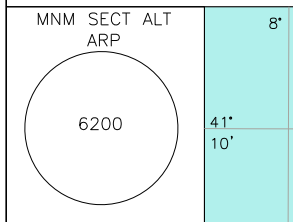
CHANGE: REPRINTING

ENAV - Roma

AIP - Italia



FREQUENCIES		
TWR	Olbia TWR	118.975
APP	Roma Radar	125.950 (127.125)
ATIS	Olbia arrival and departure information	113.900



BEARINGS ARE MAGNETIC

JAN 2020

SID RNAV1
RMY05

OLBIA/COSTA SMERALDA
TRANSITION ALT 6000

D603
FL 245
SFC

DISTANCES: NM
ALTITUDES, ELEVATIONS AND HEIGHTS: FEET

SCALE 1:750.000

AIRAC effective date 23 APR 2020 (A3/20)

AD 2 LEO 6-1

OLBIA / Costa Smeralda

SID RNAV1 RWY 05

REMARK

Minimum climb gradient 7% (425 FT/NM) until leaving 5000 FT.

Minimum climb gradient 7% (425 FT/NM) until leaving FL85 for SID OLBEK 6K and SUKUN 6K.

Close-in obstacles penetrating OIS 2.5% exist but were not considered for the published Procedure Design Gradient

ATNET 7K

Path Terminator	Waypoint Identifier	Fly Over	Course °M(°T)	Magnetic Variation	Distance (NM)	Turn Direction	Altitude (ft)	Speed Limit (kt)	Navigation Specification
CA	-	-	053 (055.4)	3°	-	-	+420	-	RNAV1
DF	EO603	-	-	-	-	-	+3500	-230	RNAV1
TF	ATNET	-	120 (122.7)	-	24.5	-	+FL95	-	RNAV1

BATOX 6K

Path Terminator	Waypoint Identifier	Fly Over	Course °M(°T)	Magnetic Variation	Distance (NM)	Turn Direction	Altitude (ft)	Speed Limit (kt)	Navigation Specification
CA	-	-	053 (055.4)	3°	-	-	+420	-	RNAV1
DF	EO603	-	-	-	-	-	+3500	-230	RNAV1
TF	BATOX	-	055 (057.8)	-	25.5	-	+FL95	-	RNAV1

INDUM 7K

Path Terminator	Waypoint Identifier	Fly Over	Course °M(°T)	Magnetic Variation	Distance (NM)	Turn Direction	Altitude (ft)	Speed Limit (kt)	Navigation Specification
CA	-	-	053 (055.4)	3°	-	-	+420	-	RNAV1
DF	EO603	-	-	-	-	-	+3500	-230	RNAV1
TF	TUKLU	-	323 (325.7)	-	7.0	L	-	-	RNAV1
TF	EO620	-	303 (305.7)	-	14.7	-	+FL80	-	RNAV1
TF	EO621	-	233 (236.1)	-	7.0	-	-	-	RNAV1
TF	INDUM	-	233 (235.8)	-	19.3	-	+FL95	-	RNAV1

LABOM 7K

Path Terminator	Waypoint Identifier	Fly Over	Course °M(°T)	Magnetic Variation	Distance (NM)	Turn Direction	Altitude (ft)	Speed Limit (kt)	Navigation Specification
CA	-	-	053 (055.4)	3°	-	-	+420	-	RNAV1
DF	EO603	-	-	-	-	-	+3500	-230	RNAV1
TF	EO622	-	141 (143.4)	-	12.1	-	+6000	-	RNAV1
TF	VAGVU	-	192 (194.3)	-	14.1	-	-	-	RNAV1
TF	EO623	-	229 (232.1)	-	10.0	-	+FL110	-	RNAV1
TF	LABOM	-	229 (232.0)	-	10.8	-	-	-	RNAV1

OKIVA 7K

Path Terminator	Waypoint Identifier	Fly Over	Course °M(°T)	Magnetic Variation	Distance (NM)	Turn Direction	Altitude (ft)	Speed Limit (kt)	Navigation Specification
CA	-	-	053 (055.4)	3°	-	-	+420	-	RNAV1
DF	EO603	-	-	-	-	-	+3500	-230	RNAV1
TF	TUKLU	-	323 (325.7)	-	7.0	L	+5000	-	RNAV1
TF	EO620	-	303 (305.7)	-	14.7	-	+FL80	-	RNAV1
TF	OKIVA	-	300 (302.6)	-	12.1	-	+FL85	-	RNAV1

OLBEK 6K

Path Terminator	Waypoint Identifier	Fly Over	Course °M(°T)	Magnetic Variation	Distance (NM)	Turn Direction	Altitude (ft)	Speed Limit (kt)	Navigation Specification
CA	-	-	053 (055.4)	3°	-	-	+420	-	RNAV1
DF	EO603	-	-	-	-	-	+3500	-230	RNAV1
TF	OLBEK	-	023 (025.6)	-	18.2	-	+FL95	-	RNAV1

SUKUN 6K

Path Terminator	Waypoint Identifier	Fly Over	Course °M(°T)	Magnetic Variation	Distance (NM)	Turn Direction	Altitude (ft)	Speed Limit (kt)	Navigation Specification
CA	-	-	053 (055.4)	3°	-	-	+420	-	RNAV1
DF	EO603	-	-	-	-	-	+3500	-230	RNAV1
TF	EO622	-	141 (143.4)	-	12.1	-	+6000	-	RNAV1
TF	SUKUN	-	141 (143.4)	-	5.5	-	+FL95	-	RNAV1

SUTAD 7K

Path Terminator	Waypoint Identifier	Fly Over	Course °M(°T)	Magnetic Variation	Distance (NM)	Turn Direction	Altitude (ft)	Speed Limit (kt)	Navigation Specification
CA	-	-	053 (055.4)	3°	-	-	+420	-	RNAV1
DF	EO603	-	-	-	-	-	+3500	-230	RNAV1
TF	EO622	-	141 (143.4)	-	12.1	-	+6000	-	RNAV1
TF	VAGVU	-	192 (194.3)	-	14.1	-	-	-	RNAV1
TF	EO623	-	229 (232.1)	-	10.0	-	-	-	RNAV1
TF	EO468	-	271 (273.9)	-	12.6	-	-	-	RNAV1
TF	SUTAD	-	286 (288.4)	-	16.8	-	+FL95	-	RNAV1

TEREZ 7K

Path Terminator	Waypoint Identifier	Fly Over	Course °M(°T)	Magnetic Variation	Distance (NM)	Turn Direction	Altitude (ft)	Speed Limit (kt)	Navigation Specification
CA	-	-	053 (055.4)	3°	-	-	+420	-	RNAV1
DF	EO603	-	-	-	-	-	+3500	-230	RNAV1
TF	TUKLU	-	323 (325.7)	-	7.0	L	+5000	-	RNAV1
TF	EO620	-	303 (305.7)	-	14.7	-	+FL80	-	RNAV1
TF	TEREZ	-	293 (296.0)	-	14.8	-	+FL85	-	RNAV1

WAYPOINT LIST

Waypoint Identifier	Coordinates
EO468	40°30'26.5" N 009°18'57.2" E
EO603	40°59'07.26" N 009°40'52.1" E
EO620	41°13'28.9" N 009°19'52.7" E
EO621	41°09'34.5" N 009°12'10.7" E
EO622	40°49'26.0" N 009°50'22.9" E
EO623	40°29'34.4" N 009°35'25.1" E

Intenzionalmente bianca

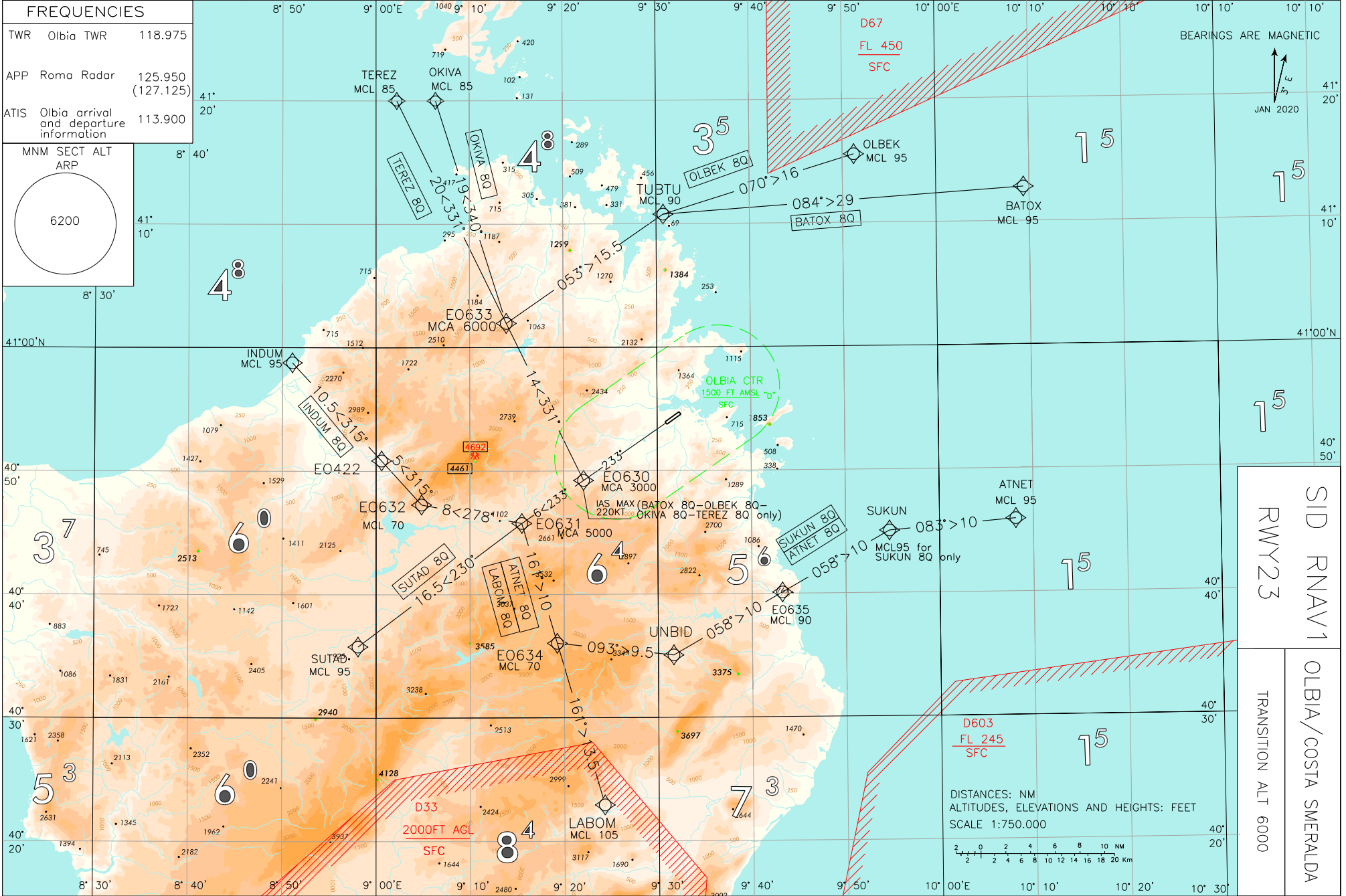
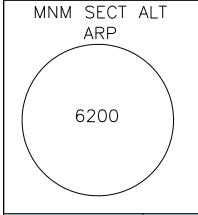
Intentionally left blank

CHANGE: MAGNETIC VARIATION UPDATED AND SIDS RENUMBERED

ENAV - Roma

AIRAC effective date 27 FEB 2020 (A1/20)

FREQUENCIES		
TWR	Olbia TWR	118.975
APP	Roma Radar	125.950 (127.125)
ATIS	Olbia arrival and departure information	113.900



BEARINGS ARE MAGNETIC
JAN 2020

SID RNAV1	OLBIA/COSTA SMERALDA
RWY23	TRANSITION ALT 6000

D603
FL 245
SFC

D67
FL 450
SFC

D33
2000FT AGL
SFC

DISTANCES: NM
ALTITUDES, ELEVATIONS AND HEIGHTS: FEET
SCALE 1:750.000

ALP - Italia

AD 2 LEO 6-7

OLBIA / Costa Smeralda

SID RNAV1 RWY 23

REMARK

Minimum climb gradient: 7% (425 FT/NM) until leaving TRL.

Close-in obstacles penetrating OIS 2.5% exist but were not considered for the published Procedure Design Gradient

ATNET 8Q

Path Terminator	Waypoint Identifier	Fly Over	Course °M(°T)	Magnetic Variation	Distance (NM)	Turn Direction	Altitude (ft)	Speed Limit (kt)	Navigation Specification
CA	-	-	233 (235.4)	3°	-	-	+437	-	RNAV1
DF	EO630	-	-	-	-	-	+3000	-	RNAV1
TF	EO631	-	233 (235.3)	-	6.1	-	+5000	-	RNAV1
TF	EO634	-	161 (163.7)	-	10.1	-	+FL70	-	RNAV1
TF	UNBID	-	093 (096.0)	-	9.5	-	-	-	RNAV1
TF	EO635	-	058 (060.4)	-	10.2	-	+FL90	-	RNAV1
TF	SUKUN	-	058 (060.5)	-	10.0	-	-	-	RNAV1
TF	ATNET	-	083 (085.2)	-	10.3	-	+FL95	-	RNAV1

BATOX 8Q

Path Terminator	Waypoint Identifier	Fly Over	Course °M(°T)	Magnetic Variation	Distance (NM)	Turn Direction	Altitude (ft)	Speed Limit (kt)	Navigation Specification
CA	-	-	233 (235.4)	3°	-	-	+437	-	RNAV1
DF	EO630	-	-	-	-	-	+3000	-220	RNAV1
TF	EO633	-	331 (334.0)	-	14.2	R	+6000	-	RNAV1
TF	TUBTU	-	053 (055.4)	-	15.5	-	+FL90	-	RNAV1
TF	BATOX	-	084 (086.3)	-	29.2	-	+FL95	-	RNAV1

INDUM 8Q

Path Terminator	Waypoint Identifier	Fly Over	Course °M(°T)	Magnetic Variation	Distance (NM)	Turn Direction	Altitude (ft)	Speed Limit (kt)	Navigation Specification
CA	-	-	233 (235.4)	3°	-	-	+437	-	RNAV1
DF	EO630	-	-	-	-	-	+3000	-	RNAV1
TF	EO631	-	233 (235.3)	-	6.1	-	+5000	-	RNAV1
TF	EO632	-	278 (280.5)	-	8.2	-	+FL70	-	RNAV1
TF	EO422	-	315 (317.8)	-	4.8	-	-	-	RNAV1
TF	INDUM	-	315 (317.7)	-	10.8	-	+FL95	-	RNAV1

LABOM 8Q

Path Terminator	Waypoint Identifier	Fly Over	Course °M(°T)	Magnetic Variation	Distance (NM)	Turn Direction	Altitude (ft)	Speed Limit (kt)	Navigation Specification
CA	-	-	233 (235.4)	3°	-	-	+437	-	RNAV1
DF	EO630	-	-	-	-	-	+3000	-	RNAV1
TF	EO631	-	233 (235.3)	-	6.1	-	+5000	-	RNAV1
TF	EO634	-	161 (163.7)	-	10.1	-	+FL70	-	RNAV1
TF	LABOM	-	161 (163.8)	-	13.6	-	+FL105	-	RNAV1

OKIVA 8Q

Path Terminator	Waypoint Identifier	Fly Over	Course °M(°T)	Magnetic Variation	Distance (NM)	Turn Direction	Altitude (ft)	Speed Limit (kt)	Navigation Specification
CA	-	-	233 (235.4)	3°	-	-	+437	-	RNAV1
DF	EO630	-	-	-	-	-	+3000	-220	RNAV1
TF	EO633	-	331 (334.0)	-	14.2	R	+6000	-	RNAV1
TF	OKIVA	-	340 (342.4)	-	18.9	-	+FL85	-	RNAV1

OLBEK 8Q

Path Terminator	Waypoint Identifier	Fly Over	Course °M(°T)	Magnetic Variation	Distance (NM)	Turn Direction	Altitude (ft)	Speed Limit (kt)	Navigation Specification
CA	-	-	233 (235.4)	3°	-	-	+437	-	RNAV1
DF	EO630	-	-	-	-	-	+3000	-220	RNAV1
TF	EO633	-	331 (334.0)	-	14.2	R	+6000	-	RNAV1
TF	TUBTU	-	053 (055.4)	-	15.5	-	+FL90	-	RNAV1
TF	OLBEK	-	070 (073.0)	-	16.2	-	+FL95	-	RNAV1

SUKUN 8Q

Path Terminator	Waypoint Identifier	Fly Over	Course °M(°T)	Magnetic Variation	Distance (NM)	Turn Direction	Altitude (ft)	Speed Limit (kt)	Navigation Specification
CA	-	-	233 (235.4)	3°	-	-	+437	-	RNAV1
DF	EO630	-	-	-	-	-	+3000	-	RNAV1
TF	EO631	-	233 (235.3)	-	6.1	-	+5000	-	RNAV1
TF	EO634	-	161 (163.7)	-	10.1	-	+FL70	-	RNAV1
TF	UNBID	-	093 (096.0)	-	9.5	-	-	-	RNAV1
TF	EO635	-	058 (060.4)	-	10.2	-	+FL90	-	RNAV1
TF	SUKUN	-	058 (060.5)	-	10.0	-	+FL95	-	RNAV1

SUTAD 8Q

Path Terminator	Waypoint Identifier	Fly Over	Course °M(°T)	Magnetic Variation	Distance (NM)	Turn Direction	Altitude (ft)	Speed Limit (kt)	Navigation Specification
CA	-	-	233 (235.4)	3°	-	-	+437	-	RNAV1
DF	EO630	-	-	-	-	-	+3000	-	RNAV1
TF	EO631	-	233 (235.3)	-	6.1	-	+5000	-	RNAV1
TF	SUTAD	-	230 (233.0)	-	16.6	-	+FL95	-	RNAV1

TEREZ 8Q

Path Terminator	Waypoint Identifier	Fly Over	Course °M(°T)	Magnetic Variation	Distance (NM)	Turn Direction	Altitude (ft)	Speed Limit (kt)	Navigation Specification
CA	-	-	233 (235.4)	3°	-	-	+437	-	RNAV1
DF	EO630	-		-	-	-	+3000	-220	RNAV1
TF	EO633	-	331 (334.0)	-	14.2	R	+6000	-	RNAV1
TF	TEREZ	-	331 (333.8)	-	20.1	-	+FL85	-	RNAV1

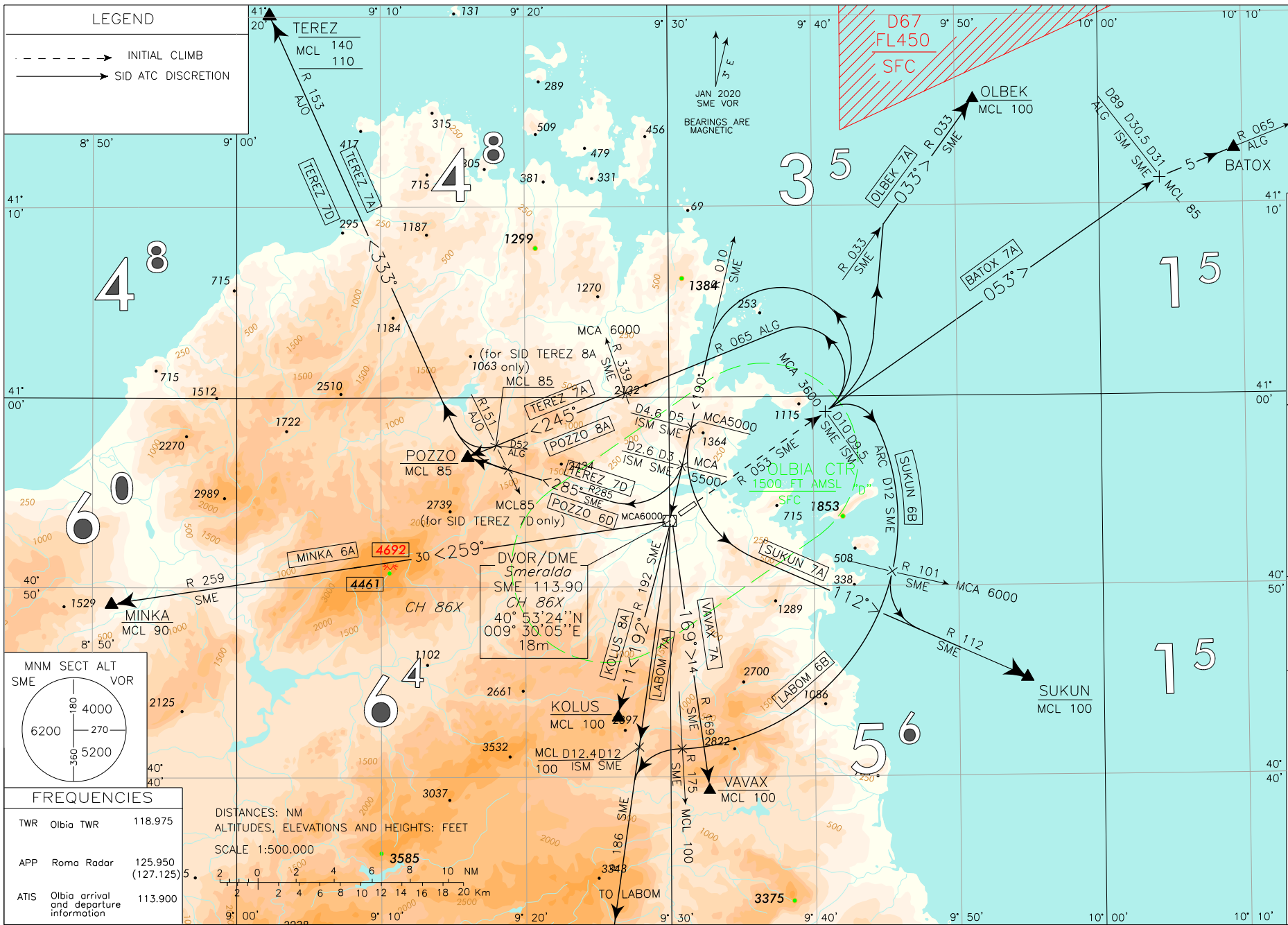
WAYPOINT LIST

Waypoint Identifier	Coordinates
EO422	40°50'50.2" N 009°00'35.6" E
EO630	40°49'13.7" N 009°22'07.0" E
EO631	40°45'45.4" N 009°15'31.7" E
EO632	40°47'16.2" N 009°04'50.9" E
EO633	41°01'58.0" N 009°13'55.3" E
EO634	40°36'02.6" N 009°19'15.8" E
EO635	40°40'06.0" N 009°43'14.0" E

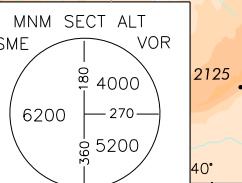
CHANGE: MAGNETIC VARIATION UPDATED AND SIDs RENUMBERED

ENAV - Roma

AIP - Italia



LEGEND	
	INITIAL CLIMB
	SID ATC DISCRETION



FREQUENCIES	
TWR Olbia TWR	118.975
APP Roma Radar	125.950 (127.125)
ATIS Olbia arrival and departure information	113.900

DISTANCES: NM
 ALTITUDES, ELEVATIONS AND HEIGHTS: FEET
 SCALE 1:500.000

REMARK SID are plannable by ACFT not RNAV1 equipped only	SID VOR
	ATC Discretion
	RWY 05
	OLBBIA/COSTA SMERALDA TRANSITION ALT 6000

AIAC effective date 27 FEB 2020 (A1/20)

AD 2 LEO 6-13

OLBIA / Costa Smeralda
SID VOR RWY 05 ATC Discretion

INITIAL CLIMB PROCEDURE

After take-off follow RDL 053 SME VOR until leaving 3600 ft not further than 10NM SME DME (or 9.5NM ISM DME), then follow the assigned SID.

REMARK

- (1) **Minimum climb gradient: 6.9% until leaving 3600 ft.**
- (2) **Close-in obstacles penetrating OIS 2.5% but were not considered for the published Procedure Design Gradient**
- (3) **SIDs listed below are plannable by aircraft not RNAV1 equipped only.**

SID DESCRIPTION

Initial climb procedure completed:

BATOX 7A

Follow RDL 053 SME VOR until joining RDL 065ALG VOR bound to BATOX.

MCL: RDL 053/31NM SME VOR/DME (RDL 065/89NM ALG VORTAC) FL 85

KOLUS 8A

Turn left until joining RDL 010 SME VOR (TR 190°) bound to SME VOR to be left on RDL 192 bound to KOLUS.

MCA/MCL: RDL 010/5NM SME VOR/DME 5000 FT (or 4.6NM ISM DME), SME VOR/DME 6000 FT, KOLUS FL 100

LABOM 7A

Turn left until joining RDL 010 SME VOR (TR 190°) bound to SME VOR to be left on RDL 186 bound to LABOM.

MCA/MCL: RDL 010/5NM SME VOR/DME (or 4.6NM ISM DME) 5000 FT, SME VOR/DME 6000 FT, RDL 186/12NM SME VOR/DME (or 12.4NM ISM DME) FL 100

LABOM 6B

Turn right until joining ARC 12NM SME DME. Crossing RDL 175 SME VOR turn left until joining RDL 186 SME VOR bound to LABOM.

MCA/MCL: INT ARC 12NM SME DME/RDL 101 SME VOR 6000 FT, INT ARC 12NM SME DME/RDL 175 SME VOR FL 100

MINKA 6A

Turn left until joining RDL 010 SME VOR (TR 190°) bound to SME VOR to be left on RDL 259 bound to MINKA.

MCA/MCL: RDL 010/5NM SME VOR/DME (or 4.6NM ISM DME) 5000 FT, SME VOR/DME 6000 FT, MINKA FL 90

OLBEK 7A

Turn left until joining RDL 033 SME VOR bound to OLBEK.

MCL: OLBEK FL 100

POZZO 8A

Turn left until joining RDL 065 ALG VOR (TR 245°) bound to POZZO.

MCA/MCL: INT RDL 065 ALG VORTAC/RDL 339 SME VOR 6000 FT, POZZO FL 85

POZZO 6D

Turn left until joining RDL 010 SME VOR (TR 190°) bound to SME VOR/DME. At 3NM SME DME (or 2.6NM ISM DME) turn right until joining RDL 285 SME VOR bound to POZZO.

MCA/MCL: RDL 010/3NM SME VOR/DME (or 2.6NM ISM DME) 5500 FT, POZZO FL 85

SUKUN 7A

Turn left until joining RDL 010 SME VOR (TR 190°) until 5NM SME DME, then turn left until joining RDL 112 SME VOR bound to SUKUN.

MCA/MCL: RDL 010/5NM SME VOR/DME (or 4.6NM ISM DME) 5000 FT, SUKUN FL 100

SUKUN 6B

Turn right until joining ARC 12NM SME DME. Crossing RDL 101 SME VOR turn left until joining RDL 112 SME VOR bound to SUKUN.

MCA/MCL: INT ARC 12NM SME DME/RDL 101 SME VOR 6000 FT, SUKUN FL 100

TEREZ 7A

Turn left until joining RDL 065 ALG VOR (TR 245°).

Crossing RDL 291 SME VOR (or RDL 151 AJO VOR) turn right until joining RDL 153 AJO VOR (TR 333°) bound to TEREZ.

MCA/MCL: INT RDL 065 ALG VOR/RDL 339 SME VOR 6000 FT, INT RDL 065 ALG VOR/RDL 291 SME VOR (or RDL 151 AJO VOR) FL 85; TEREZ between FL 110 and FL 140

TEREZ 7D

Turn left until joining RDL 010 SME VOR (TR 190°) bound to SME VOR/DME. At 3NM SME DME (or 2.6NM ISM DME) turn right until joining RDL 285 SME VOR bound to POZZO; crossing RDL 151 AJO VOR turn right until joining RDL 153 AJO VOR bound to TEREZ.

MCA/MCL: RDL 010/3NM SME VOR/DME (or 2.6NM ISM DME) 5500 FT, INT RDL 285 SME VOR/RDL 151 AJO VOR FL 85, TEREZ between FL 110 and FL 140

VAVAX 7A

Turn left until joining RDL 010 SME VOR (TR 190°) bound to SME VOR to be left on RDL 169 bound to VAVAX

MCA/MCL: RDL 010/5NM SME VOR/DME (or 4.6NM ISM DME) 5000 FT, SME VOR/DME 6000 FT; VAVAX FL 100.

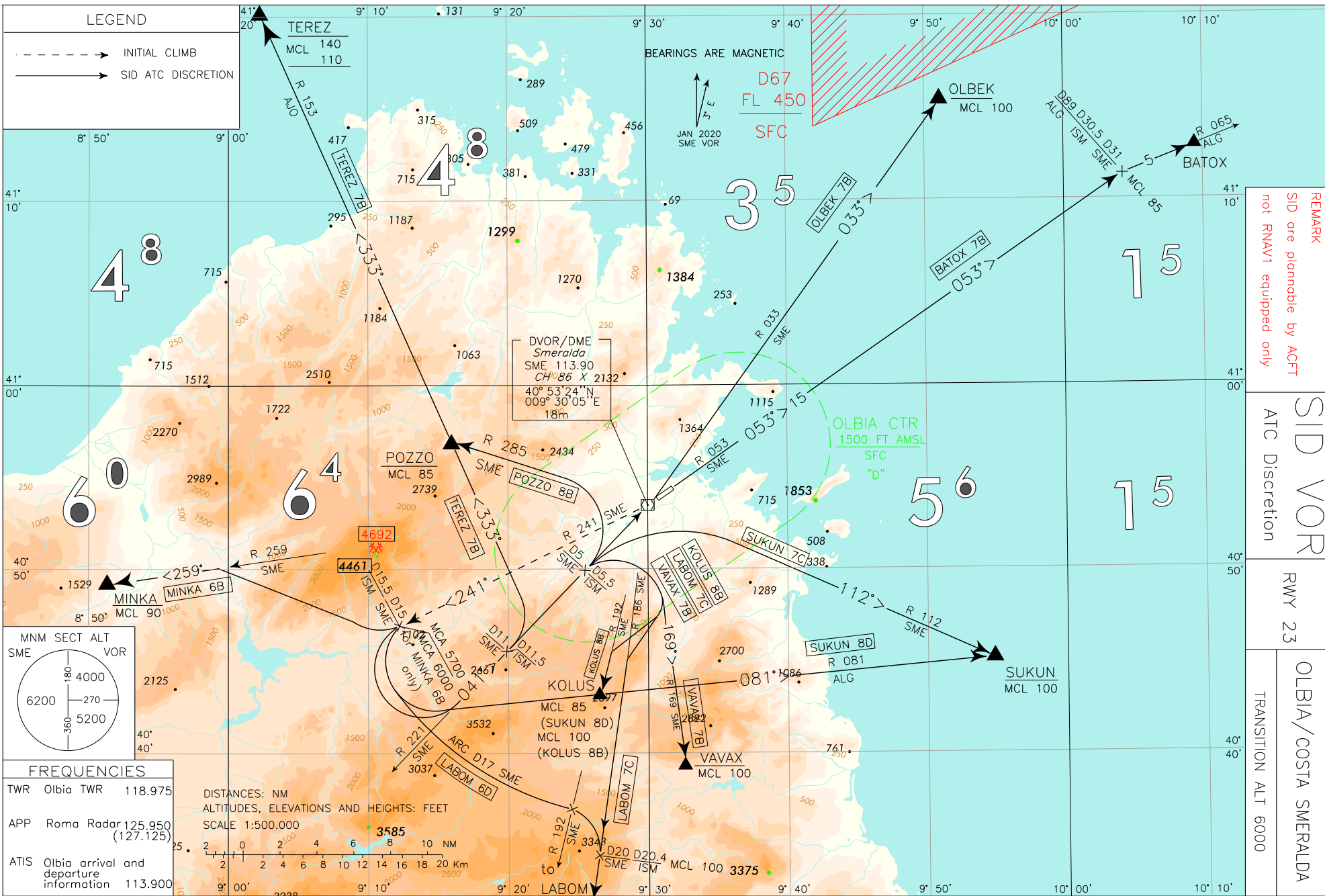
Intenzionalmente bianca

Intentionally left blank

CHANGE: MAGNETIC VARIATION UPDATED AND SIDs RENUMBERED

ENAV - Roma

AIP - Italia



AIRAC effective date 27 FEB 2020 (A1/20)

AD 2 LEO 6-17

REMARK SID are plannable by ACFT not RNAV1 equipped only
SID VOR ATC Discretion
Rwy 23
OLBIA/COSTA SMERALDA TRANSITION ALT 6000

OLBIA / Costa Smeralda**SID VOR RWY 23 ATC Discretion****INITIAL CLIMB PROCEDURE**

After take-off join RDL 241 SME VOR. At 15NM SME DME (or 15.5NM ISM DME), to be crossed at 5700 ft or above (6000 ft or above for SID MINKA 6B), join and follow the assigned SID.

REMARK

- 1) Minimum climb gradient 380 ft/NM until leaving 5700 ft, due to obstacles W and SW of airport.
- 2) Minimum climb gradient 400 ft/NM until leaving 6000 ft for SID MINKA 6B.
- 3) Pilots unable to comply with such gradient and during daylight only, shall maintain VMC until leaving 5700 ft.
- 4) Close-in obstacles penetrating OIS 2.5% but were not considered for the published Procedure Design Gradient
- 5) SIDs listed below are plannable by aircraft not RNAV1 equipped only

SID DESCRIPTION

Initial climb procedure completed:

BATOX 7B

Turn left until joining RDL 221 SME VOR (TR 041°) bound to SME VOR to be left on RDL 053 until joining RDL 065 ALG VOR bound to BATOX.

MCL: RDL 053/31NM SME VOR/DME (RDL 065/89NM ALG VORTAC) FL 85

KOLUS 8B

Turn left until joining RDL 221 SME VOR (TR 041°) until 5 NM before SME DME (or 5.5NM ISM DME), then turn right until joining RDL 192 SME VOR bound to KOLUS.

MCL: KOLUS FL 100

LABOM 7C

Turn left until joining RDL 221 SME VOR (TR 041°) until 5NM SME DME (or 5.5NM ISM DME), then turn right until joining RDL 186 SME VOR bound to LABOM.

MCL: RDL 186/20NM SME VOR/DME (or 20.4NM ISM DME) FL 100

LABOM 6D

Turn left until joining ARC 17NM SME DME. Crossing RDL 192 SME VOR turn right until joining RDL 186 SME VOR bound to LABOM.

MCL: RDL 186/20NM SME VOR/DME (or 20.4NM ISM DME) FL100

MINKA 6B

Turn right until joining RDL 259 SME VOR (TR 259°) bound to MINKA.

MCL: MINKA FL 90

OLBEK 7B

Turn left until joining RDL 221 SME VOR (TR 041°) bound to SME VOR to be left on RDL 033 bound to OLBEK.

MCL: OLBEK FL 100

POZZO 8B

Turn left until joining RDL 221 SME VOR (TR 041°) until 5NM SME DME (or 5.5NM ISM DME), then turn left until joining RDL 285 SME VOR bound to POZZO.

MCL: POZZO FL 85

SUKUN 7C

Turn left until joining RDL 221 SME VOR (TR 041°) until 5NM SME DME (or 5.5NM ISM DME), then turn right until joining RDL 112 SME VOR bound to SUKUN.

MCL: SUKUN FL 100

SUKUN 8D

Turn left until joining RDL 081 ALG VOR bound to KOLUS, then SUKUN.

MCL: KOLUS FL 85; SUKUN FL 100

TEREZ 7B

Turn left until joining RDL 221 SME VOR (TR 041°) until 11NM SME DME (or 11.5NM ISM DME), then turn left until joining RDL 153 AJO VOR (TR 333°) bound to POZZO, then TEREZ.

MCL: POZZO FL 85; TEREZ between FL 110 and FL 140

VAVAX 7B

Turn left until joining RDL 221 SME VOR (TR 041°) until 5NM SME DME (or 5.5NM ISM DME), then turn right until joining RDL 169 SME VOR bound to VAVAX.

MCL: VAVAX FL 100

Intenzionalmente bianca

Intentionally left blank