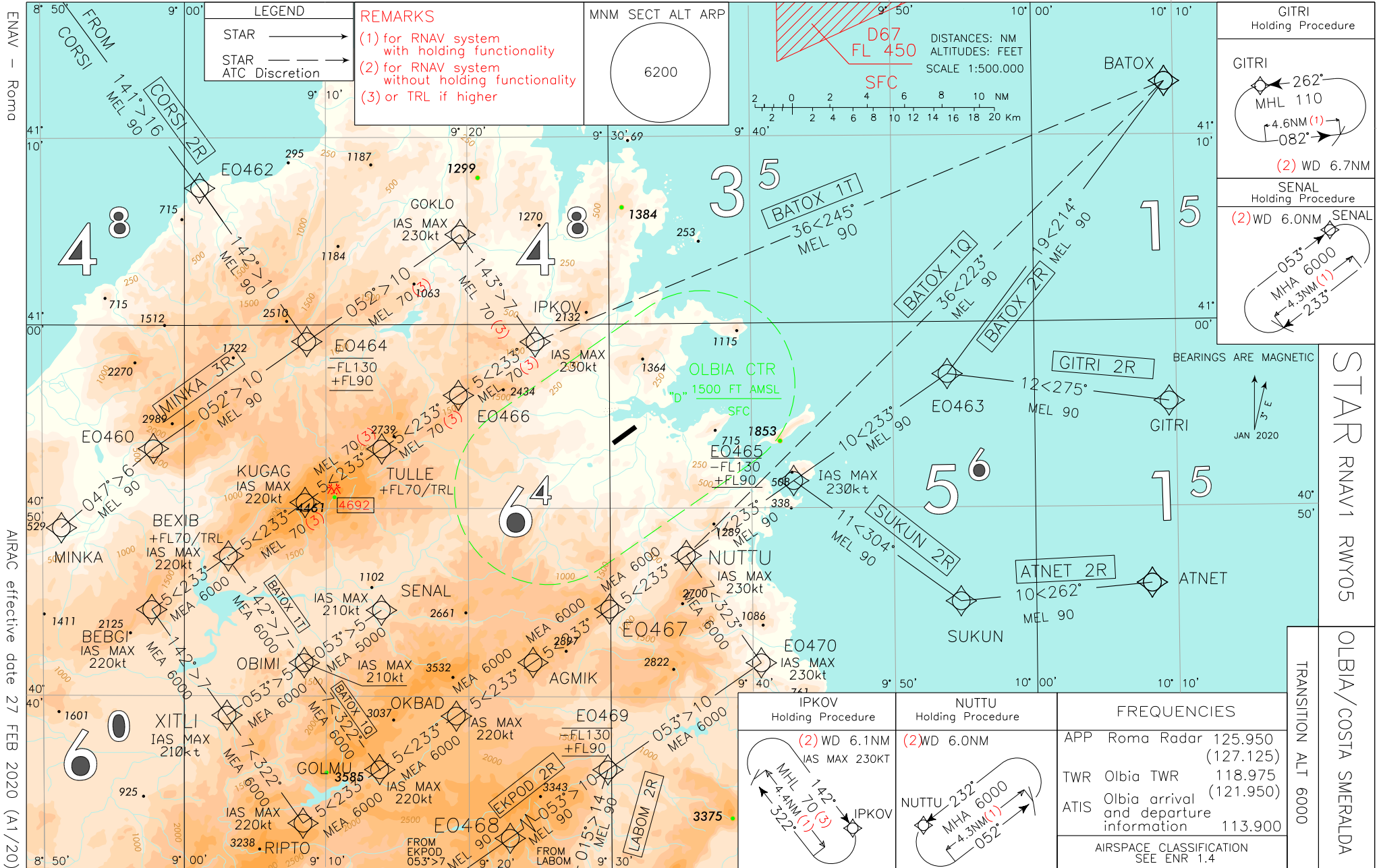
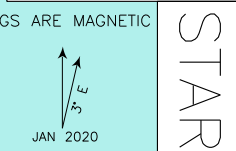
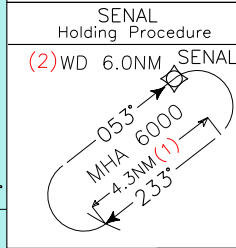
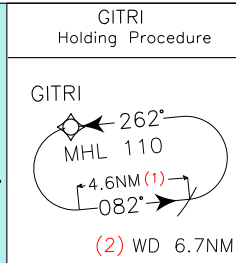
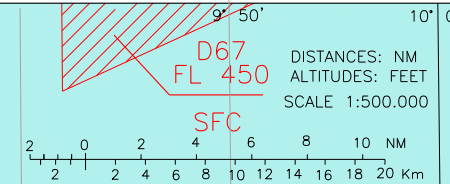
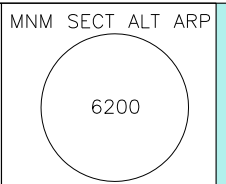


CHANGE: STAR BATOX 1Q/1T IMPLEMENTED AND MAG VARIATION UPDATED



LEGEND	
STAR	→
STAR ATC Discretion	→

REMARKS
 (1) for RNAV system with holding functionality
 (2) for RNAV system without holding functionality
 (3) or TRL if higher



ENAV - Roma

AIRAC effective date 27 FEB 2020 (A1/20)

AIP - Italia

STAR RNAV1 RWY05

OLBIA/COSTA SMERALDA
 TRANSITION ALT 6000

AD 2 LIEO 4-1

OLBIA / Costa Smeralda STAR RNAV1 RWY 05

ATNET 2R

Path Terminator	Waypoint Identifier	Fly Over	Course °M(°T)	Magnetic Variation	Distance (NM)	Turn Direction	Altitude (ft)	Speed Limit (kt)	Navigation Specification
IF	ATNET	-	-	-	-	-	-	-	RNAV1
TF	SUKUN	-	262 (265.1)	-	10.3	-	+FL90	-	RNAV1
TF	EO465	-	304 (306.3)	-	11.0	-	-FL130 +FL90	-230	RNAV1
TF	NUTTU	-	233 (235.5)	-	7.0	-	+FL90	-230	RNAV1
TF	EO467	-	233 (235.4)	-	5.0	-	+6000	-230	RNAV1
TF	AGMIK	-	233 (235.4)	-	5.0	-	+6000	-230	RNAV1
TF	OKBAD	-	233 (235.3)	-	5.0	-	+6000	-220	RNAV1
TF	GOLMU	-	233 (235.3)	-	5.0	-	+6000	-220	RNAV1
TF	RIPTO	-	233 (235.2)	-	5.0	-	+6000	-220	RNAV1
TF	XITLI	-	322 (324.8)	-	7.1	R	+6000	-210	RNAV1
TF	OBIMI	-	053 (055.8)	-	5.0	R	+6000	-210	RNAV1
TF	SENAL	-	053 (055.9)	-	5.0	-	+5000	-210	RNAV1

BATOX 2R

Path Terminator	Waypoint Identifier	Fly Over	Course °M(°T)	Magnetic Variation	Distance (NM)	Turn Direction	Altitude (ft)	Speed Limit (kt)	Navigation Specification
IF	BATOX	-	-	-	-	-	-	-	RNAV1
TF	EO463	-	214 (217.2)	-	19.5	-	+FL90	-	RNAV1
TF	EO465	-	233 (235.7)	-	10.0	-	-FL130 +FL90	-230	RNAV1
TF	NUTTU	-	233 (235.5)	-	7.0	-	+FL90	-230	RNAV1
TF	EO467	-	233 (235.4)	-	5.0	-	+6000	-230	RNAV1
TF	AGMIK	-	233 (235.4)	-	5.0	-	+6000	-230	RNAV1
TF	OKBAD	-	233 (235.3)	-	5.0	-	+6000	-220	RNAV1
TF	GOLMU	-	233 (235.3)	-	5.0	-	+6000	-220	RNAV1
TF	RIPTO	-	233 (235.2)	-	5.0	-	+6000	-220	RNAV1
TF	XITLI	-	322 (324.8)	-	7.1	R	+6000	-210	RNAV1
TF	OBIMI	-	053 (055.8)	-	5.0	R	+6000	-210	RNAV1
TF	SENAL	-	053 (055.9)	-	5.0	-	+5000	-210	RNAV1

BATOX 1Q (ATC Discretion)

Path Terminator	Waypoint Identifier	Fly Over	Course °M(°T)	Magnetic Variation	Distance (NM)	Turn Direction	Altitude (ft)	Speed Limit (kt)	Navigation Specification
IF	BATOX	-	-	-	-	-	-	-	RNAV1
TF	NUTTU	-	223 (225.9)	-	36.0	-	+FL90	-230	RNAV1
TF	EO467	-	233 (235.4)	-	5.0	-	+6000	-230	RNAV1
TF	AGMIK	-	233 (235.4)	-	5.0	-	+6000	-230	RNAV1
TF	OKBAD	-	233 (235.3)	-	5.0	-	+6000	-220	RNAV1
TF	GOLMU	-	233 (235.3)	-	5.0	-	+6000	-220	RNAV1
TF	OBIMI	-	322 (325.0)	-	7.0	R	+6000	-210	RNAV1
TF	SENAL	-	053 (055.9)	-	5.0	R	+5000	-210	RNAV1

BATOX 1T (ATC Discretion)

Path Terminator	Waypoint Identifier	Fly Over	Course °M(°T)	Magnetic Variation	Distance (NM)	Turn Direction	Altitude (ft)	Speed Limit (kt)	Navigation Specification
IF	BATOX	-	-	-	-	-	-	-	RNAV1
TF	IPKOV	-	245 (248.1)	-	36.4	-	+FL90	-230	RNAV1
TF	EO466	-	233 (235.4)	-	5.0	-	+FL70 (3)	-230	RNAV1
TF	TULLE	-	233 (235.3)	-	5.0	-	+FL70 (3)	-230	RNAV1
TF	KUGAG	-	233 (235.2)	-	5.0	-	+FL70 (3)	-220	RNAV1
TF	BEXIB	-	233 (235.2)	-	5.0	-	+FL70 (3)	-220	RNAV1
TF	OBIMI	-	142 (144.7)	-	7.0	L	+6000	-210	RNAV1
TF	SENAL	-	053 (055.9)	-	5.0	L	+5000	-210	RNAV1

(3) MEL TRL if higher

CORSI 2R

Path Terminator	Waypoint Identifier	Fly Over	Course °M(°T)	Magnetic Variation	Distance (NM)	Turn Direction	Altitude (ft)	Speed Limit (kt)	Navigation Specification
IF	CORSI	-	-	-	-	-	-	-	RNAV1
TF	EO462	-	141 (143.6)	-	15.7	-	+FL90	-	RNAV1
TF	EO464	-	142 (145.1)	-	10.0	-	-FL130 +FL90	-	RNAV1
TF	GOKLO	-	052 (055.2)	-	10.0	-	+FL70 (3)	-230	RNAV1
TF	IPKOV	-	143 (145.3)	-	7.0	R	+FL70 (3)	-230	RNAV1
TF	EO466	-	233 (235.3)	-	5.0	R	+FL70 (3)	-230	RNAV1
TF	TULLE	-	233 (235.3)	-	5.0	-	+FL70 (3)	-230	RNAV1
TF	KUGAG	-	233 (235.2)	-	5.0	-	+FL70 (3)	-220	RNAV1
TF	BEXIB	-	233 (235.2)	-	5.0	-	+FL70 (3)	-220	RNAV1
TF	BEBGI	-	233 (235.1)	-	5.0	-	+6000	-220	RNAV1
TF	XITLI	-	142 (114.7)	-	6.9	L	+6000	-210	RNAV1
TF	OBIMI	-	053 (055.8)	-	5.0	L	+6000	-210	RNAV1
TF	SENAL	-	053 (055.9)	-	5.0	-	+5000	-210	RNAV1

(3) MEL TRL if higher

EKPOD 2R

Path Terminator	Waypoint Identifier	Fly Over	Course °M(°T)	Magnetic Variation	Distance (NM)	Turn Direction	Altitude (ft)	Speed Limit (kt)	Navigation Specification
IF	EKPOD	-	-	-	-	-	-	-	RNAV1
TF	EO468	-	053 (055.7)	-	6.9	-	+FL90	-	RNAV1
TF	EO469	-	053 (055.3)	-	10.0	-	-FL130 +FL90	-	RNAV1
TF	EO470	-	053 (055.4)	-	10.0	-	+6000	-230	RNAV1
TF	NUTTU	-	323 (325.5)	-	7.0	L	+6000	-230	RNAV1
TF	EO467	-	233 (235.4)	-	5.0	L	+6000	-230	RNAV1
TF	AGMIK	-	233 (235.4)	-	5.0	-	+6000	-230	RNAV1
TF	OKBAD	-	233 (235.3)	-	5.0	-	+6000	-220	RNAV1
TF	GOLMU	-	233 (235.3)	-	5.0	-	+6000	-220	RNAV1
TF	RIPTO	-	233 (235.2)	-	5.0	-	+6000	-220	RNAV1
TF	XITLI	-	322 (324.8)	-	7.1	R	+6000	-210	RNAV1
TF	OBIMI	-	053 (055.8)	-	5.0	R	+6000	-210	RNAV1
TF	SENAL	-	053 (055.9)	-	5.0	-	+5000	-210	RNAV1

GITRI 2R

Path Terminator	Waypoint Identifier	Fly Over	Course °M(°T)	Magnetic Variation	Distance (NM)	Turn Direction	Altitude (ft)	Speed Limit (kt)	Navigation Specification
IF	GITRI	-	-	-	-	-	-	-	RNAV1
TF	EO463	-	275 (277.6)	-	12.0	-	+FL90	-	RNAV1
TF	EO465	-	233 (235.7)	-	10.0	-	-FL130 +FL90	-230	RNAV1
TF	NUTTU	-	233 (235.5)	-	7.0	-	+FL90	-230	RNAV1
TF	EO467	-	233 (235.4)	-	5.0	-	+6000	-230	RNAV1
TF	AGMIK	-	233 (235.4)	-	5.0	-	+6000	-230	RNAV1
TF	OKBAD	-	233 (235.3)	-	5.0	-	+6000	-220	RNAV1
TF	GOLMU	-	233 (235.3)	-	5.0	-	+6000	-220	RNAV1
TF	RIPTO	-	233 (235.2)	-	5.0	-	+6000	-220	RNAV1
TF	XITLI	-	322 (324.8)	-	7.1	R	+6000	-210	RNAV1
TF	OBIMI	-	053 (055.8)	-	5.0	R	+6000	-210	RNAV1
TF	SENAL	-	053 (055.9)	-	5.0	-	+5000	-210	RNAV1

LABOM 2R

Path Terminator	Waypoint Identifier	Fly Over	Course °M(°T)	Magnetic Variation	Distance (NM)	Turn Direction	Altitude (ft)	Speed Limit (kt)	Navigation Specification
IF	LABOM	-	-	-	-	-	-	-	RNAV1
TF	EO469	-	015 (017.5)	-	13.8	-	-FL130 +FL90	-	RNAV1
TF	EO470	-	053 (055.4)	-	10.0	-	+6000	-230	RNAV1
TF	NUTTU	-	323 (325.5)	-	7.0	L	+6000	-230	RNAV1
TF	EO467	-	233 (235.4)	-	5.0	L	+6000	-230	RNAV1
TF	AGMIK	-	233 (235.4)	-	5.0	-	+6000	-230	RNAV1
TF	OKBAD	-	233 (235.3)	-	5.0	-	+6000	-220	RNAV1
TF	GOLMU	-	233 (235.3)	-	5.0	-	+6000	-220	RNAV1
TF	RIPTO	-	233 (235.2)	-	5.0	-	+6000	-220	RNAV1
TF	XITLI	-	322 (324.8)	-	7.1	R	+6000	-210	RNAV1
TF	OBIMI	-	053 (055.8)	-	5.0	R	+6000	-210	RNAV1
TF	SENAL	-	053 (055.9)	-	5.0	-	+5000	-210	RNAV1

MINKA 3R

Path Terminator	Waypoint Identifier	Fly Over	Course °M(°T)	Magnetic Variation	Distance (NM)	Turn Direction	Altitude (ft)	Speed Limit (kt)	Navigation Specification
IF	MINKA	-	-	-	-	-	-	-	RNAV1
TF	EO460	-	047 (049.2)	-	6.5	-	+FL90	-	RNAV1
TF	EO464	-	052 (055.0)	-	10.0	-	-FL130 +FL90	-	RNAV1
TF	GOKLO	-	052 (055.2)	-	10.0	-	+FL70 (3)	-230	RNAV1
TF	IPKOV	-	143 (145.3)	-	7.0	R	+FL70 (3)	-230	RNAV1
TF	EO466	-	233 (235.3)	-	5.0	R	+FL70 (3)	-230	RNAV1
TF	TULLE	-	233 (235.3)	-	5.0	-	+FL70 (3)	-230	RNAV1
TF	KUGAG	-	233 (235.3)	-	5.0	-	+FL70 (3)	-220	RNAV1
TF	BEXIB	-	233 (235.2)	-	5.0	-	+FL70 (3)	-220	RNAV1
TF	BEBGI	-	233 (235.1)	-	5.0	-	+6000	-220	RNAV1
TF	XITLI	-	142 (144.7)	-	6.9	L	+6000	-210	RNAV1
TF	OBIMI	-	053 (055.8)	-	5.0	L	+6000	-210	RNAV1
TF	SENAL	-	053 (055.9)	-	5.0	-	+5000	-210	RNAV1

(3) or TRL if higher

SUKUN 2R

Path Terminator	Waypoint Identifier	Fly Over	Course °M(°T)	Magnetic Variation	Distance (NM)	Turn Direction	Altitude (ft)	Speed Limit (kt)	Navigation Specification
IF	SUKUN	-	-	-	-	-	-	-	RNAV1
TF	EO465	-	304 (306.3)	-	11.0	-	-FL130 +FL90	-230	RNAV1
TF	NUTTU	-	233 (235.5)	-	7.0	-	+FL90	-230	RNAV1
TF	EO467	-	233 (235.4)	-	5.0	-	+6000	-230	RNAV1
TF	AGMIK	-	233 (235.4)	-	5.0	-	+6000	-230	RNAV1
TF	OKBAD	-	233 (235.3)	-	5.0	-	+6000	-220	RNAV1
TF	GOLMU	-	233 (235.3)	-	5.0	-	+6000	-220	RNAV1
TF	RIPTO	-	233 (235.2)	-	5.0	-	+6000	-220	RNAV1
TF	XITLI	-	322 (324.8)	-	7.1	R	+6000	-210	RNAV1
TF	OBIMI	-	053 (055.8)	-	5.0	R	+6000	-210	RNAV1
TF	SENAL	-	053 (055.9)	-	5.0	-	+5000	-210	RNAV1

HOLDING RNAV1

Path Terminator	Waypoint Identifier	Inbound Course °M (°T)	Leg Distance (NM) (1)	Timing(min.)/ Waypoint Distance (NM) (2)	Turn Direction	Minimum Altitude (FT)	Maximum Altitude (FL)	Speed Limit (kt)	Magnetic Variation (°)	Navigation Specification
HM	IPKOV	142 (145.0)	4.4	-/6.1	R	+FL70	-	-230	3	RNAV1
HM	NUTTU	232 (235.1)	4.3	-/6.0	L	+6000	-	-	3	RNAV1
HM	GITRI	262 (265.2)	4.6	-/6.7	L	+FL110	-	-	3	RNAV1
HM	SENAL	053 (056.0)	4.3	-/6.0	R	+6000	-	-	3	RNAV1

(1) RNAV system with holding functionality

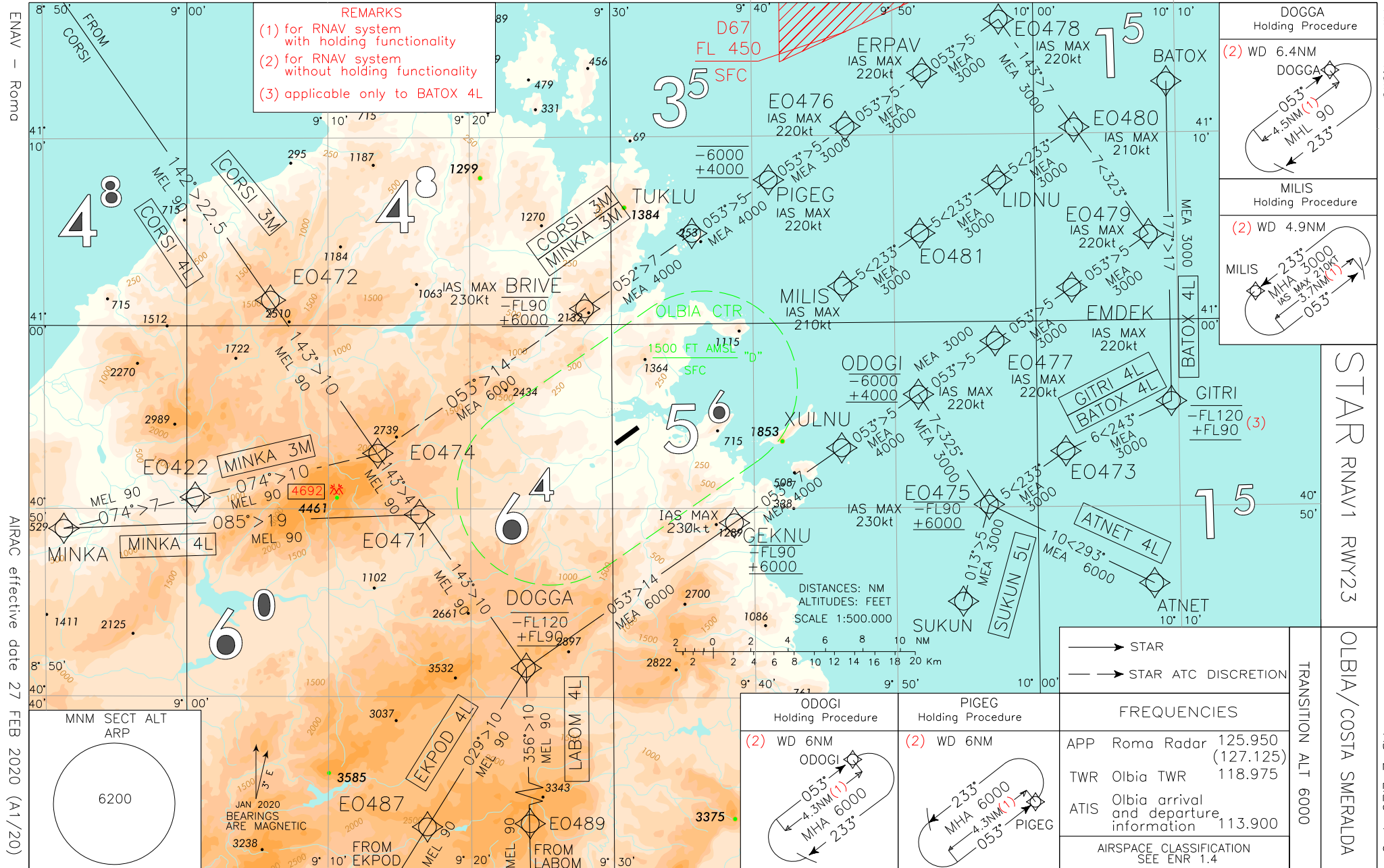
(2) RNAV system without holding functionality

(3) or TRL if higher

WAYPOINT LIST

Waypoint Identifier	Coordinates
EO460	40°53'23.8" N 008°57'49.1" E
EO462	41°07'20.1" N 009°01'04.9" E
EO463	40°57'12.8" N 009°53'50.2" E
EO464	40°59'07.4" N 009°08'38.7" E
EO465	40°51'33.4" N 009°42'57.1" E
EO466	40°56'13.4" N 009°19'20.4" E
EO467	40°44'44.8" N 009°29'55.8" E
EO468	40°30'26.5" N 009°18'57.2" E
EO469	40°36'08.2" N 009°29'44.9" E
EO470	40°41'48.9" N 009°40'34.3" E

CHANGE: MAGNETIC VARIATION UPDATED AND STARS RENUMBERED



ENAV - Roma

AIRAC effective date 27 FEB 2020 (A1/20)

AIP - Italia

AD 2 LEO 4-9

OLBIA / Costa Smeralda STAR RNAV1 RWY 23

ATNET 4L

Path Terminator	Waypoint Identifier	Fly Over	Course °M(°T)	Magnetic Variation	Distance (NM)	Turn Direction	Altitude (ft)	Speed Limit (kt)	Navigation Specification
IF	ATNET	-	-	-	-	-	-	-	RNAV1
TF	EO475	-	293 (296.1)	-	9.8	-	-FL90 +6000	-230	RNAV1
TF	ODOGI	-	325 (327.8)	-	7.0	-	-6000 +4000	-220	RNAV1
TF	EO477	-	053 (055.6)	-	5.0	R	+3000	-220	RNAV1
TF	EMDEK	-	053 (055.7)	-	5.0	-	+3000	-220	RNAV1
TF	EO479	-	053 (055.7)	-	5.0	-	+3000	-220	RNAV1
TF	EO480	-	323 (325.8)	-	7.0	-	+3000	-210	RNAV1
TF	LIDNU	-	233 (236.1)	-	5.0	-	+3000	-210	RNAV1
TF	EO481	-	233 (236.0)	-	5.0	-	+3000	-210	RNAV1
TF	MILIS	-	233 (236.0)	-	5.0	-	+3000	-210	RNAV1

BATOX 4L

Path Terminator	Waypoint Identifier	Fly Over	Course °M(°T)	Magnetic Variation	Distance (NM)	Turn Direction	Altitude (ft)	Speed Limit (kt)	Navigation Specification
IF	BATOX	-	-	-	-	-	-	-	RNAV1
TF	GITRI	-	177 (179.7)	-	17.1	-	-FL120 +FL90	-	RNAV1
TF	EO473	-	243 (245.3)	-	6.2	-	+3000	-	RNAV1
TF	EO475	-	233 (235.7)	-	5.0	-	-FL90 +6000	-230	RNAV1
TF	ODOGI	-	325 (327.8)	-	7.0	R	-6000 +4000	-220	RNAV1
TF	EO477	-	053 (055.6)	-	5.0	R	+3000	-220	RNAV1
TF	EMDEK	-	053 (055.7)	-	5.0	-	+3000	-220	RNAV1
TF	EO479	-	053 (055.7)	-	5.0	-	+3000	-220	RNAV1
TF	EO480	-	323 (325.8)	-	7.0	-	+3000	-210	RNAV1
TF	LIDNU	-	233 (236.1)	-	5.0	-	+3000	-210	RNAV1
TF	EO481	-	233 (236.0)	-	5.0	-	+3000	-210	RNAV1
TF	MILIS	-	233 (236.0)	-	5.0	-	+3000	-210	RNAV1

CORSI 4L

Path Terminator	Waypoint Identifier	Fly Over	Course °M(°T)	Magnetic Variation	Distance (NM)	Turn Direction	Altitude (ft)	Speed Limit (kt)	Navigation Specification
IF	CORSI	-	-	-	-	-	-	-	RNAV1
TF	EO472	-	142 (145.1)	-	22.7	-	+FL90	-	RNAV1
TF	EO474	-	143 (145.2)	-	10.0	-	+FL90	-	RNAV1
TF	EO471	-	143 (145.3)	-	4.0	-	+FL90	-	RNAV1
TF	DOGGA	-	143 (145.4)	-	10.0	-	-FL120 +FL90	-	RNAV1
TF	GEKNU	-	053 (055.3)	-	14.0	L	-FL90 +6000	-230	RNAV1
TF	XULNU	-	053 (055.5)	-	7.0	-	+4000	-230	RNAV1
TF	ODOGI	-	053 (055.6)	-	5.0	-	-6000 +4000	-220	RNAV1
TF	EO477	-	053 (055.6)	-	5.0	-	+3000	-220	RNAV1
TF	EMDEK	-	053 (055.7)	-	5.0	-	+3000	-220	RNAV1
TF	EO479	-	053 (055.7)	-	5.0	-	+3000	-220	RNAV1
TF	EO480	-	323 (325.8)	-	7.0	-	+3000	-210	RNAV1
TF	LIDNU	-	233 (236.1)	-	5.0	-	+3000	-210	RNAV1
TF	EO481	-	233 (236.0)	-	5.0	-	+3000	-210	RNAV1
TF	MILIS	-	233 (236.0)	-	5.0	-	+3000	-210	RNAV1

CORSI 3M (ATC Discretion)

Path Terminator	Waypoint Identifier	Fly Over	Course °M(°T)	Magnetic Variation	Distance (NM)	Turn Direction	Altitude (ft)	Speed Limit (kt)	Navigation Specification
IF	CORSI	-	-	--		-	-	-	RNAV1
TF	EO472	-	142 (145.1)	-	22.7	-	+FL90	-	RNAV1
TF	EO474	-	143 (145.2)	-	10.0	-	+FL90	-	RNAV1
TF	BRIVE	-	053 (055.2)	-	14.0	L	-FL90 +6000	-230	RNAV1
TF	TUKLU	-	052 (055.1)	-	7.0	-	+4000	-230	RNAV1
TF	PIGEG	-	053 (055.5)	-	5.0	-	-6000 +4000	-220	RNAV1
TF	EO476	-	053 (055.5)	-	5.0	-	+3000	-220	RNAV1
TF	ERPAV	-	053 (055.6)	-	5.0	-	+3000	-220	RNAV1
TF	EO478	-	053 (055.5)	-	5.0	-	+3000	-220	RNAV1
TF	EO480	-	143 (145.6)	-	7.0	R	+3000	-210	RNAV1
TF	LIDNU	-	233 (236.1)	-	5.0	R	+3000	-210	RNAV1
TF	EO481	-	233 (236.0)	-	5.0	-	+3000	-210	RNAV1
TF	MILIS	-	233 (236.0)	-	5.0	-	+3000	-210	RNAV1

EKPOD 4L

Path Terminator	Waypoint Identifier	Fly Over	Course °M(°T)	Magnetic Variation	Distance (NM)	Turn Direction	Altitude (ft)	Speed Limit (kt)	Navigation Specification
IF	EKPOD	-	-	-	-	-	-	-	RNAV1
TF	EO487	-	029 (032.0)	-	7.8	-	+FL90	-	RNAV1
TF	DOGGA	-	029 (032.1)	-	10.0	-	-FL120 +FL90	-	RNAV1
TF	GEKNU	-	053 (055.3)	-	14.0	-	-FL90 +6000	-230	RNAV1
TF	XULNU	-	053 (055.5)	-	7.0	-	+4000	-230	RNAV1
TF	ODOGI	-	053 (055.6)	-	5.0	-	-6000 +4000	-220	RNAV1
TF	EO477	-	053 (055.6)	-	5.0	-	+3000	-220	RNAV1
TF	EMDEK	-	053 (055.7)	-	5.0	-	+3000	-220	RNAV1
TF	EO479	-	053 (055.7)	-	5.0	-	+3000	-220	RNAV1
TF	EO480	-	323 (325.8)	-	7.0	-	+3000	-210	RNAV1
TF	LIDNU	-	233 (236.1)	-	5.0	-	+3000	-210	RNAV1
TF	EO481	-	233 (236.0)	-	5.0	-	+3000	-210	RNAV1
TF	MILIS	-	233 (236.0)	-	5.0	-	+3000	-210	RNAV1

GITRI 4L

Path Terminator	Waypoint Identifier	Fly Over	Course °M(°T)	Magnetic Variation	Distance (NM)	Turn Direction	Altitude (ft)	Speed Limit (kt)	Navigation Specification
IF	GITRI	-	-	-	-	-	-	-	RNAV1
TF	EO473	-	243 (245.3)	-	6.2	-	+3000	-	RNAV1
TF	EO475	-	233 (235.7)	-	5.0	-	-FL90 +6000	-230	RNAV1
TF	ODOGI	-	325 (327.8)	-	7.0	R	-6000 +4000	-220	RNAV1
TF	EO477	-	053 (055.6)	-	5.0	R	+3000	-220	RNAV1
TF	EMDEK	-	053 (055.7)	-	5.0	-	+3000	-220	RNAV1
TF	EO479	-	053 (055.7)	-	5.0	-	+3000	-220	RNAV1
TF	EO480	-	323 (325.8)	-	7.0	-	+3000	-210	RNAV1
TF	LIDNU	-	233 (236.1)	-	5.0	-	+3000	-210	RNAV1
TF	EO481	-	233 (236.0)	-	5.0	-	+3000	-210	RNAV1
TF	MILIS	-	233 (236.0)	-	5.0	-	+3000	-210	RNAV1

LABOM 4L

Path Terminator	Waypoint Identifier	Fly Over	Course °M(°T)	Magnetic Variation	Distance (NM)	Turn Direction	Altitude (ft)	Speed Limit (kt)	Navigation Specification
IF	LABOM	-	-	-	-	-	-	-	RNAV1
TF	EO489	-	356 (359.1)	-	8.7	-	+FL90	-	RNAV1
TF	DOGGA	-	356 (359.1)	-	10.0	-	-FL120 +FL90	-	RNAV1
TF	GEKNU	-	053 (055.3)	-	14.0	-	-FL90 +6000	-230	RNAV1
TF	XULNU	-	053 (055.5)	-	7.0	-	+4000	-230	RNAV1
TF	ODOGI	-	053 (055.6)	-	5.0	-	-6000 +4000	-220	RNAV1
TF	EO477	-	053 (055.6)	-	5.0	-	+3000	-220	RNAV1
TF	EMDEK	-	053 (055.7)	-	5.0	-	+3000	-220	RNAV1
TF	EO479	-	053 (055.7)	-	5.0	-	+3000	-220	RNAV1
TF	EO480	-	323 (325.8)	-	7.0	-	+3000	-210	RNAV1
TF	LIDNU	-	233 (236.1)	-	5.0	-	+3000	-210	RNAV1
TF	EO481	-	233 (236.0)	-	5.0	-	+3000	-210	RNAV1
TF	MILIS	-	233 (236.0)	-	5.0	-	+3000	-210	RNAV1

MINKA 4L

Path Terminator	Waypoint Identifier	Fly Over	Course °M(°T)	Magnetic Variation	Distance (NM)	Turn Direction	Altitude (ft)	Speed Limit (kt)	Navigation Specification
IF	MINKA	-	-	-	-	-	-	-	RNAV1
TF	EO471	-	085 (087.7)	-	19.0	-	+FL90	-	RNAV1
TF	DOGGA	-	143 (145.4)	-	10.0	-	-FL120 +FL90	-	RNAV1
TF	GEKNU	-	053 (055.3)	-	14.0	L	-FL90 +6000	-230	RNAV1
TF	XULNU	-	053 (055.5)	-	7.0	-	+4000	-230	RNAV1
TF	ODOGI	-	053 (055.6)	-	5.0	-	-6000 +4000	-220	RNAV1
TF	EO477	-	053 (055.6)	-	5.0	-	+3000	-220	RNAV1
TF	EMDEK	-	053 (055.7)	-	5.0	-	+3000	-220	RNAV1
TF	EO479	-	053 (055.7)	-	5.0	-	+3000	-220	RNAV1
TF	EO480	-	323 (325.8)	-	7.0	-	+3000	-210	RNAV1
TF	LIDNU	-	233 (236.1)	-	5.0	-	+3000	-210	RNAV1
TF	EO481	-	233 (236.0)	-	5.0	-	+3000	-210	RNAV1
TF	MILIS	-	233 (236.0)	-	5.0	-	+3000	-210	RNAV1

MINKA 3M (ATC Discretion)

Path Terminator	Waypoint Identifier	Fly Over	Course °M(°T)	Magnetic Variation	Distance (NM)	Turn Direction	Altitude (ft)	Speed Limit (kt)	Navigation Specification
IF	MINKA	-	-	-	-	-	-	-	RNAV1
TF	EO422	-	074 (076.5)	-	7.2	-	+FL90	-	RNAV1
TF	EO474	-	074 (076.69)	-	10.0	-	+FL90	-	RNAV1
TF	BRIVE	-	053 (055.2)	-	14.0	-	-FL90 +6000	-230	RNAV1
TF	TUKLU	-	052 (055.1)	-	7.0	-	+4000	-230	RNAV1
TF	PIGEG	-	053 (055.5)	-	5.0	-	-6000 +4000	-220	RNAV1
TF	EO476	-	053 (055.5)	-	5.0	-	+3000	-220	RNAV1
TF	ERPAV	-	053 (055.6)	-	5.0	-	+3000	-220	RNAV1
TF	EO478	-	053 (055.5)	-	5.0	-	+3000	-220	RNAV1
TF	EO480	-	143 (145.6)	-	7.0	R	+3000	-210	RNAV1
TF	LIDNU	-	233 (236.1)	-	5.0	R	+3000	-210	RNAV1
TF	EO481	-	233 (236.0)	-	5.0	-	+3000	-210	RNAV1
TF	MILIS	-	233 (236.0)	-	5.0	-	+3000	-210	RNAV1

SUKUN 5L

Path Terminator	Waypoint Identifier	Fly Over	Course °M(°T)	Magnetic Variation	Distance (NM)	Turn Direction	Altitude (ft)	Speed Limit (kt)	Navigation Specification
IF	SUKUN	-	-	-	-	-	-	-	RNAV1
TF	EO475	-	013 (015.5)	-	5.4	-	-FL90 +6000	-230	RNAV1
TF	ODOGI	-	325 (327.8)	-	7.0	-	-6000 +4000	-220	RNAV1
TF	EO477	-	053 (055.6)	-	5.0	R	+3000	-220	RNAV1
TF	EMDEK	-	053 (055.7)	-	5.0	-	+3000	-220	RNAV1
TF	EO479	-	053 (055.7)	-	5.0	-	+3000	-220	RNAV1
TF	EO480	-	323 (325.8)	-	7.0	-	+3000	-210	RNAV1
TF	LIDNU	-	233 (236.1)	-	5.0	-	+3000	-210	RNAV1
TF	EO481	-	233 (236.0)	-	5.0	-	+3000	-210	RNAV1
TF	MILIS	-	233 (236.0)	-	5.0	-	+3000	-210	RNAV1

HOLDING RNAV1

Path Terminator	Waypoint Identifier	Inbound Course °M (°T)	Leg Distance (NM) (1)	Timing(min.)/ Waypoint Distance (NM) (2)	Turn Direction	Minimum Altitude (FT)	Maximum Altitude (FL)	Speed Limit (kt)	Magnetic Variation (°)	Navigation Specification
HM	DOGGA	053 (055.3)	4.5	-/6.4	R	+FL90	-	-	3	RNAV1
HM	ODOGI	053 (055.6)	4.3	-/6.0	R	+6000	-	-	3	RNAV1
HM	PIGEG	053 (055.5)	4.3	-/6.0	L	+6000	-	-	3	RNAV1
HM	MILIS	233 (234.0)	3.7	-/4.9	L	+3000	-	-210	3	RNAV1

(1) RNAV system with holding functionality

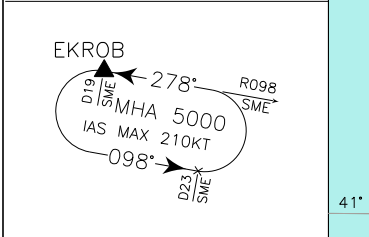
(2) RNAV system without holding functionality

WAYPOINT LIST

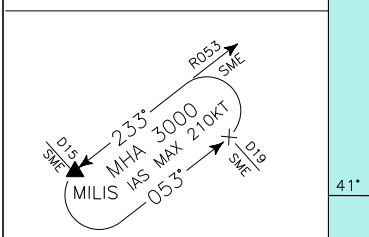
Waypoint Identifier	Coordinates
EO422	40°50'50.2" N 009°00'35.6" E
EO471	40°49'52.5" N 009°16'24.0" E
EO472	41°01'22.3" N 009°05'54.4" E
EO473	40°53'02.1" N 010°02'00.2" E
EO474	40°53'08.6" N 009°13'25.5" E
EO475	40°50'13.0" N 009°56'33.5" E
EO476	41°10'31.4" N 009°46'37.4" E
EO477	40°58'58.1" N 009°57'05.3" E
EO478	41°16'10.8" N 009°57'33.7" E
EO479	41°04'36.1" N 010°08'00.8" E
EO480	41°10'22.0" N 010°02'49.1" E
EO481	41°04'46.3" N 009°51'50.6" E
EO487	40°33'09.4" N 009°16'53.4" E
EO489	40°31'37.6" N 009°24'05.3" E

FREQUENCIES	
APP Roma Radar	125.950 (127.125)
TWR Olbia TWR	118.975
ATIS Olbia arrival and departure information	113.900

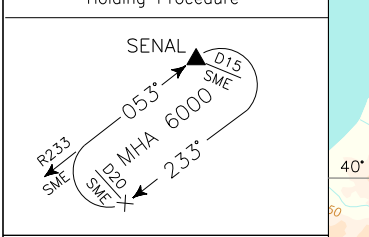
EKROB Holding Procedure



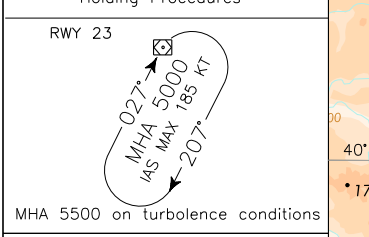
MILIS Holding Procedure



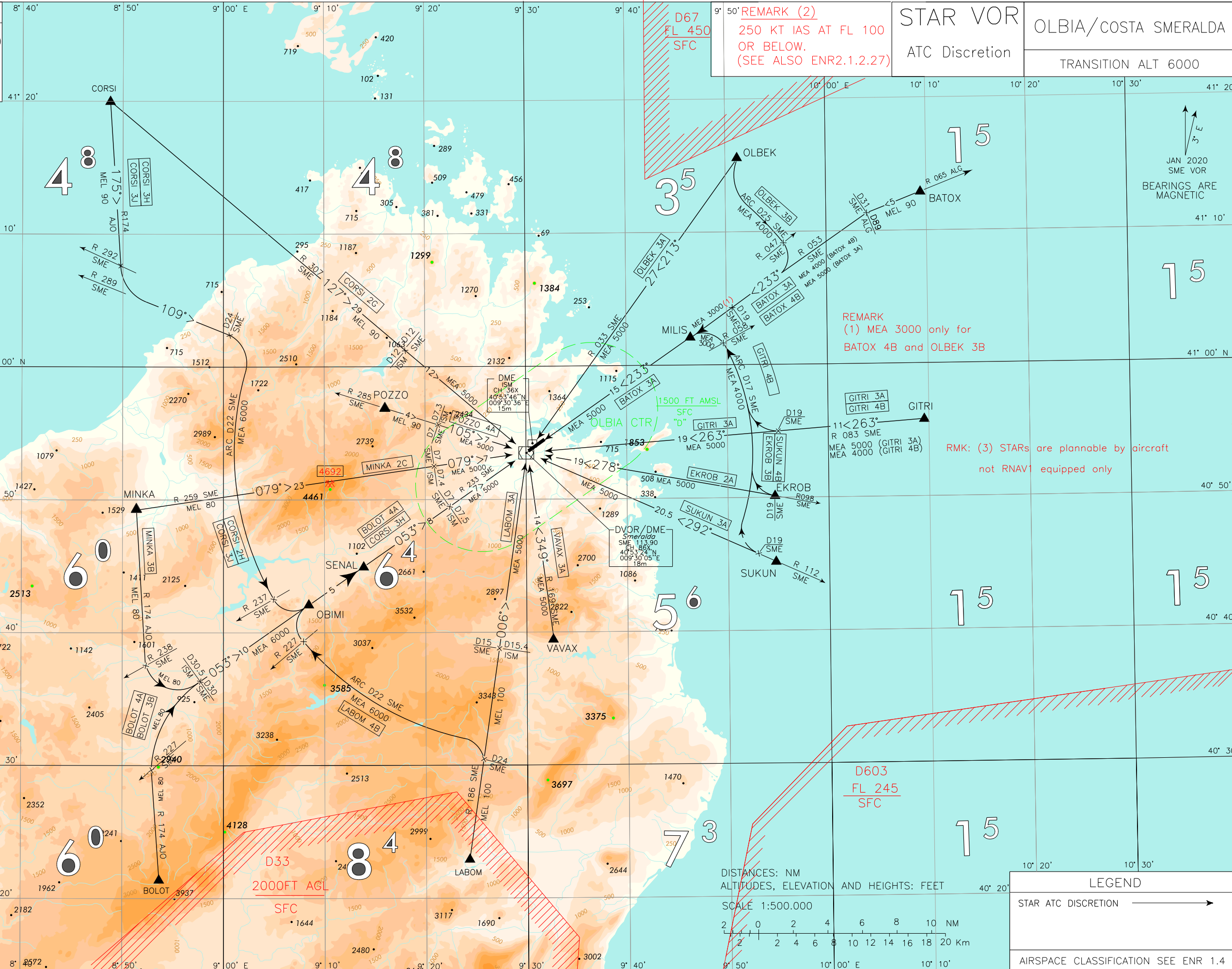
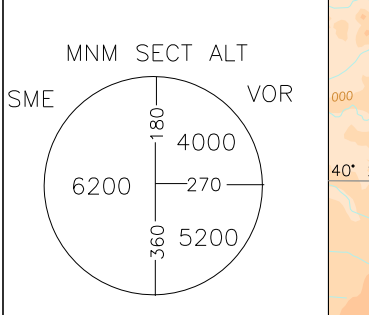
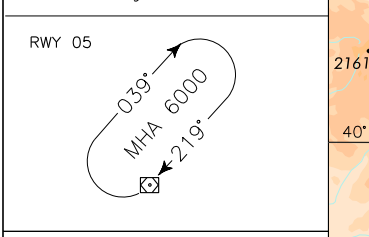
SENAL Holding Procedure



SME VOR Holding Procedures



SME VOR Holding Procedures



REMARK (2)
250 KT IAS AT FL 100 OR BELOW.
(SEE ALSO ENR2.1.2.27)

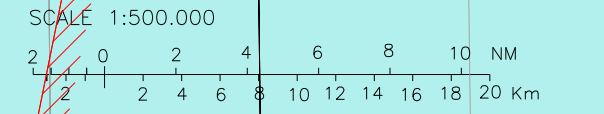
STAR VOR
ATC Discretion

OLBIA/COSTA SMERALDA
TRANSITION ALT 6000

REMARK (1) MEA 3000 only for BATOX 4B and OLBEK 3B

RMK: (3) STARS are plannable by aircraft not RNAV equipped only

DISTANCES: NM
ALTITUDES, ELEVATION AND HEIGHTS: FEET



LEGEND	
STAR ATC DISCRETION	→
AIRSPACE CLASSIFICATION SEE ENR 1.4	

CHANGE: MAGNETIC VARIATION UPDATED AND STARS RENUMBERED

OLBIA / Costa Smeralda STAR VOR**ATC Discretion****REMARK**

STARs listed below are planable by aircraft not RNAV1 equipped only

BATOX 3A

BATOX – TR 245° (RDL 065 ALG VOR) until 31NM SME DME (or 89NM ALG TACAN), then turn left on TR 233° (RDL 053 SME VOR) bound to SME VOR/DME.

MEL/MEA: BATOX – RDL 065/89NM ALG VORTAC (or 31NM SME DME): FL 90; RDL 065/89NM ALG VORTAC (or 31NM SME DME) – SME VOR/DME: 5000 FT

BATOX 4B

BATOX – TR 245° (RDL 065 ALG VOR) until 31NM SME DME (or 89NM ALG TACAN), then turn left on TR 233° (RDL 053 SME VOR) bound to MILIS.

MEL/MEA: BATOX – RDL 065/89NM ALG VORTAC (or 31NM SME DME): FL 90; RDL 065/89NM ALG VORTAC (or 31NM SME DME) - RDL 053/19NM SME VOR/DME: 4000 FT; RDL 053/19NM SME VOR/DME – MILIS: 3000 FT

BOLOT 4A

BOLOT – TR 354° (RDL 174 AJO VOR) until crossing RDL 227 SME VOR, then turn right until joining RDL 233 SME VOR (TR 053°) bound to OBIMI, then proceed SENAL – SME VOR/DME.

MEL/MEA: BOLOT – RDL 233/30NM SME VOR/DME (or 30.5NM ISM DME): FL 80; RDL 233/30NM SME VOR/DME (or 30.5NM ISM DME) – RDL 233/7NM SME VOR/DME (or 7.5NM ISM DME): 6000 FT; RDL 233/7 NM SME VOR/DME (or 7.5NM ISM DME) – SME VOR/DME: 5000 FT

BOLOT 3B

BOLOT – TR 354° (RDL 174 AJO VOR) until crossing RDL 227 SME VOR, then turn right until joining RDL 233 SME VOR (TR 053°) bound to OBIMI, then SENAL.

MEL/MEA: BOLOT – RDL 233/30NM SME VOR/DME (or 30.5NM ISM DME): FL 80; RDL 233/30NM SME VOR/DME (or 30.5NM ISM DME) – SENAL: 6000 FT

CORSI 3H

CORSI – TR 174° (RDL 174 AJO VOR) until crossing RDL 292 SME VOR, then turn left until joining RDL 289 SME VOR (TR 109°). At 24NM SME DME turn right until joining ARC 22NM SME DME. Crossing RDL 237 SME VOR turn left until joining RDL 233 SME VOR (TR 053°) bound to OBIMI, then proceed SENAL – SME VOR/DME.

MEL/MEA: CORSI – RDL 289/24NM SME VOR/DME: FL 90; RDL 289/24NM SME VOR/DME – RDL 233/7NM SME VOR/DME (or 7.5NM ISM DME): 6000 FT; RDL 233/7NM SME VOR/DME (or 7.5NM ISM DME) - SME VOR/DME: 5000 FT

CORSI 3J

CORSI – TR 174° (RDL 174 AJO VOR) until crossing RDL 292 SME VOR, then turn left until joining RDL 289 SME VOR (TR 109°). At 24NM SME DME turn right until joining ARC 22NM SME DME. Crossing RDL 237 SME VOR turn left until joining RDL 233 SME VOR (TR 053°) bound to OBIMI, then SENAL.

MEL/MEA: CORSI – RDL 289/24NM SME VOR/DME: FL 90; RDL 289/24NM SME VOR/DME – SENAL: 6000 FT

CORSI 2G

CORSI – TR 127° (RDL 307 SME VOR) – SME VOR/DME.

MEL/MEA: CORSI – RDL 307/12NM SME VOR/DME (or 12NM ISM DME): FL 90; RDL 307/12NM SME VOR/DME (or 12NM ISM DME) – SME VOR/DME: 5000 FT

EKROB 2A

EKROB – TR 278° (RDL 098 SME VOR) – SME VOR/DME.

MEA: EKROB – SME VOR/DME: 5000 FT

EKROB 3B

EKROB turn right until joining ARC 17 NM SME DME. Crossing RDL 058 SME VOR turn left bound to MILIS.

MEA: EKROB – INT ARC 17 NM SME DME/RDL 058 SME VOR: 4000FT; INT ARC 17 NM SME DME/RDL 058 SME VOR - MILIS: 3000 FT

GITRI 3A

GITRI – TR 263° (RDL 083 SME VOR) – SME VOR/DME.

MEA: GITRI – SME VOR/DME: 5000 FT

GITRI 4B

GITRI – TR 263° (RDL 083 SME VOR) until 19NM SME DME, then turn right until joining ARC 17NM SME DME. Crossing RDL 058 SME VOR turn left until joining RDL 053 SME VOR (TR 233°) bound to MILIS.

MEA: GITRI – INT ARC 17 NM SME DME/RDL 058 SME VOR: 4000FT; INT ARC 17 NM SME DME/RDL 058 SME VOR – MILIS: 3000 FT

LABOM 3A

LABOM – TR 006° (RDL 186 SME VOR) – SME VOR.

MEL/MEA: LABOM – RDL 186/15 NM SME VOR/DME: FL 100; RDL 186/15 NM SME VOR/DME – SME VOR: 5000 FT

LABOM 4B

LABOM – TR 006° (RDL 186 SME VOR) until 24NM SME DME, then turn left until joining ARC 22NM SME DME. Crossing RDL 227 SME VOR turn right until joining RDL 233 SME VOR (TR 053°) bound to OBIMI, then SENAL.

MEL/MEA: LABOM – RDL 186/24NM SME VOR/DME: FL 100; RDL 186/24NM SME VOR/DME – SENAL: 6000 FT

MINKA 3B

MINKA – TR 174° (RDL174 AJO VOR) until crossing RDL 238 SME VOR, then turn left until joining RDL 233 SME VOR (TR 053°) bound to OBIMI, then SENAL.

MEL/MEA: MINKA – RDL 233/30NM SME VOR/DME (or 30.5NM ISM DME): FL 80; RDL 233/30NM SME VOR/DME (or 30.5NM ISM DME) – SENAL: 6000 FT

MINKA 2C

MINKA – TR 079° (RDL 259 SME VOR) – SME VOR/DME.

MEL/MEA: MINKA – RDL 259/7NM SME VOR/DME (or 7.4NM ISM DME): FL 80; RDL 259/7NM SME VOR/DME (or 7.4NM ISM DME) – SME VOR/DME: 5000 FT

OLBEK 3A

OLBEK – TR 213° (RDL 033 SME VOR) – SME VOR/DME.

MEA: OLBEK – SME VOR/DME: 5000 FT

OLBEK 3B

OLBEK turn left until joining ARC 25NM SME DME. Crossing RDL 047 SME VOR turn right until joining RDL 053 SME VOR (TR 233°) bound to MILIS.

MEA: OLBEK – RDL 053/19NM SME VOR/DME: 4000FT; RDL 053/19NM SME VOR/DME: 4000FT - MILIS: 3000 FT

POZZO 4A

POZZO – TR 105° (RDL 285 SME VOR) – SME VOR/DME.

MEL/MEA: POZZO – RDL 285/7NM SME VOR/DME (or 7.3NM ISM DME): FL 90; RDL 285/7NM SME VOR/DME (or 7.3NM ISM DME) – SME VOR/DME: 5000 FT

SUKUN 3A

SUKUN – TR 292° (RDL 112 SME VOR) – SME VOR/DME.

MEA: SUKUN – SME VOR/DME: 5000 FT

SUKUN 4B

SUKUN – TR 292° (RDL 112 SME VOR) until 19NM SME DME, then turn right until joining ARC 17NM SME DME. Crossing RDL 058 SME VOR turn left until joining RDL 053 SME VOR (TR 233°) bound to MILIS.

MEA: SUKUN – INT ARC 17 NM SME DME/RDL 058 SME VOR: 4000FT; INT ARC 17 NM SME DME/RDL 058 SME VOR - MILIS: 3000 FT

VAVAX 3A

VAVAX – TR 349° (RDL 169 SME VOR) – SME VOR/DME.

MEA: VAVAX – SME VOR/DME: 5000 FT

Intenzionalmente bianca

Intentionally left blank