

CHANGE: FREQ BOX UPDATED

PARTENZE PER RWY 32 (VOR OPERATIVO)**PROCEDURA DI SALITA INIZIALE**

Dopo il decollo procedere su rotta 317° (TR 317°) ed a 4 NM CAG DME, da raggiungere non al di sotto di 1000 ft, virare a destra per inserirsi sulla SID assegnata.

Gradiente minimo di salita (ATC):

- 300 ft/NM (4.9%) fino a FL 150 se autorizzati via SID KOVAS 6E;
- 320 ft/NM (5.3%) se autorizzati via SID CAR 6E (fino a 4000 ft) e LEDRO 6E (fino a FL 110);
- 420 ft/NM (6.9%) fino a FL 150 se autorizzati via SID KOVAS 5M.

Virata con IAS MAX 220 kt.

DESCRIZIONE DELLE SID**LEDRO 6E**

Eseguita la procedura di salita iniziale, proseguire su rotta 137° e attraversando RDL 075 CAG VOR, virare a sinistra su RDL 085 (TR 085°) diretti al LEDRO (RDL 085/29 NM CAG VOR/DME – RDL 037/13 NM CAR VOR/DME).

MCA/MCL: INT TR 137°/RDL 075 CAG VOR, 4000 FT; LEDRO FL 110

KOVAS 6E

Eseguita la procedura di salita iniziale, proseguire su rotta 180° per intercettare e seguire RDL 137 CAG VOR (TR 137°). A 5 NM CAG DME virare a sinistra su rotta 317° (completando la virata a 3500 ft o più) e, attraversando RDL 009 CAG VOR virare a destra su RDL 001 (TR 001°) CAG VOR diretti al punto KOVAS (RDL 001/24 NM CAG VOR/DME – RDL 328/38 NM CAR VOR/DME).

MCA/MCL: INT TR 317°/RDL 009 CAG VOR, 5000 FT; KOVAS FL 150

KOVAS 5M

Eseguita la procedura di salita iniziale, virare a destra su rotta 030° fino ad intercettare RDL 001 CAG VOR. Proseguire su RDL 001 CAG VOR (TR 001°) per KOVAS.

MCL: KOVAS: FL 90 (se impossibilitati, informare l'ente ATC / if not able to comply, advice ATC unit)

CAR 6E

Eseguita la procedura di salita iniziale, proseguire su rotta 180° e attraversando RDL 050 CAG VOR virare a sinistra su RDL 110 CAG VOR o RDL 290 CAR VOR (TR 110°) per CAR VOR/DME.

MCA/MCL: INT TR 180°/RDL 050 CAG VOR, 4000 FT;
CAR VOR/DME FL 80 o/or 6000 FT se/if QNH inferiore a/lower than 977 HPA

DEPARTURE FROM RWY 32 (VOR OPERATIVE)**INITIAL CLIMB PROCEDURES**

After take off proceed on track 317° (TR 317°) and at 4 NM CAG DME, to be reached not below 1000 ft, then turn right to join the assigned SID.

Minimum climb gradient (ATC):

- 300 ft/NM (4.9%) up to FL 150 if cleared via SID KOVAS 6E;
- 320 ft/NM (5.3%) if cleared via SID CAR 6E (up to 4000 ft) and LEDRO 6E (up to FL 110).
- 420 ft/NM (6.9%) up to FL 150 if cleared via SID KOVAS 5M.

Turn as IAS MAX 220 kt.

SID DESCRIPTION**LEDRO 6E**

Initial climb procedure completed, proceed on track 137° and crossing RDL 075 CAG VOR, turn left on RDL 085 (TR 085°) to LEDRO (RDL 085/29 NM CAG VOR/DME – RDL 037/13 NM CAR VOR/DME).

KOVAS 6E

Initial climb procedure completed, proceed on track 180° to join RDL 137 CAG VOR (TR 137°). At 5 NM CAG DME turn left on track 317° (to complete the turn at 3500 ft or more) and, crossing RDL 009 CAG VOR turn right on RDL 001 (TR 001°) CAG VOR to KOVAS (RDL 001/24 NM CAG VOR/DME – RDL 328/38 NM CAR VOR/DME).

KOVAS 5M

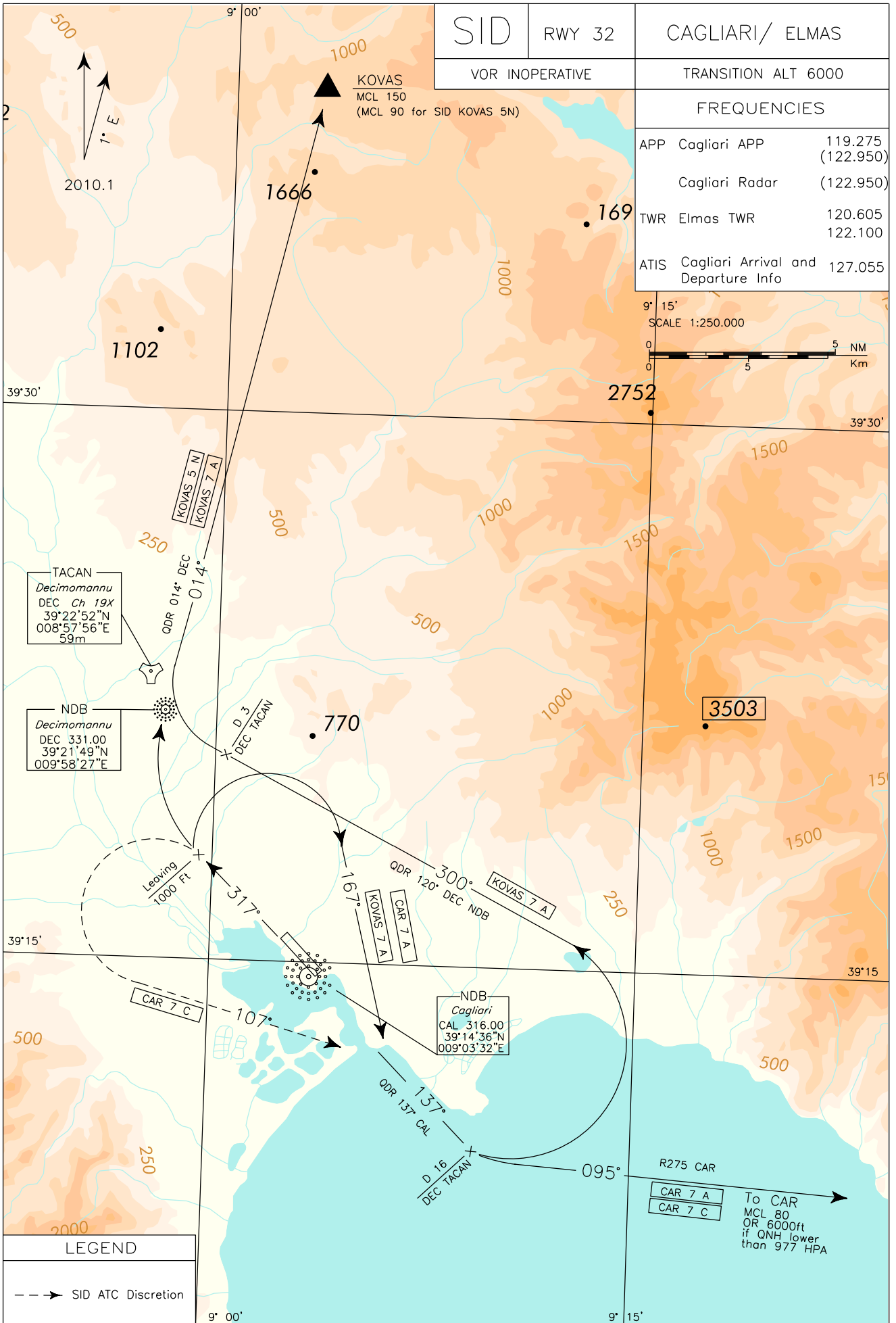
Initial climb procedure completed, turn right on track 030° to join RDL 001 CAG VOR. Proceed on RDL 001 CAG VOR (TR 001°) bound to KOVAS.

CAR 6E

Initial climb procedure completed, proceed on track 180° and crossing RDL 050 CAG VOR turn left on RDL 110 CAG VOR or RDL 290 CAR VOR (TR 110°) to CAR VOR/DME.

Intenzionalmente bianca

Intentionally left blank



SID RWY 32 (VOR INOPERATIVO)**PROCEDURA DI SALITA INIZIALE**

1. Se autorizzati per SID KOVAS 7A o CAR 7A, dopo il decollo procedere su rotta 317° (QDR 317° CAL NDB) fino a lasciare 1000 ft, quindi virare a destra su rotta 167°. Intercettare e seguire QDR 137° CAL NDB (TR 137°) fino a 16NM DEC TACAN.

Gradiente minimo di salita:

- 400 ft/NM (6.6%) se autorizzati via SID KOVAS 7A;
- 320 ft/NM (5.3%) se autorizzati via SID CAR 7A.

Virata con IAS MAX 220 kt.

2. Se autorizzati per SID CAR 7C dopo il decollo procedere su rotta 317° fino a lasciare 1000 ft, quindi virare a sinistra su rotta 107°. Intercettare e seguire QDR 137° CAL NDB (TR 137°) fino a 16NM DEC TACAN.

Gradiente minimo di salita: 320 ft/NM (5.3%) fino a FL 90.

3. Se autorizzati per SID KOVAS 5N: dopo il decollo procedere su rotta 317° fino a lasciare 1000 ft, quindi virare a destra diretti su DEC NDB.

Gradiente minimo di salita: 420 ft/NM (6.9%) fino a FL 90.

DESCRIZIONE SID**KOVAS 7A**

Virare a sinistra per intercettare e seguire QDR 120° DEC NDB (TR 300°). A D3 DEC TACAN virare a destra per intercettare e seguire QDR 014° DEC NDB per il punto KOVAS.

Gradiente minimo di salita 400 ft/NM (6.6%) fino a FL 150.

Virate con IAS MAX 220 KT.

MCL: KOVAS FL 150

CAR 7A

Virare a sinistra per intercettare e seguire RDL 275° CAR VOR (TR 095°) per CAR VOR-DME.

Gradiente minimo di salita 320 ft/NM (5.3%) fino a lasciare 4000 ft.

Virate con IAS MAX 220 kt.

MCA/MCL: CAR VOR/DME, FL 80 o/or 6000 ft se/if QNH inferiore a/lower than 977 HPA

KOVAS 5N

Lasciare DEC NDB su QDR 014° (TR 014°), diretti a KOVAS.

MCL: KOVAS FL 90

CAR 7C (A discrezione ATC)

Virare a sinistra per intercettare e seguire RDL 275° CAR VOR (TR 095°) per CAR VOR-DME.

MCA/MCL: CAR VOR/DME, FL 80 o/or 6000 ft se/if QNH inferiore a/lower than 977 HPA

SID RWY 32 (VOR INOPERATIVE)**INITIAL CLIMB PROCEDURE**

1. If cleared for SID KOVAS 7A or CAR 7A, after take off proceed on track 317° (QDR 317° CAL NDB) until leaving 1000 ft, then turn right on track 167°. Intercept and follow QDR 137° CAL NDB (TR 137°) until 16NM DEC TACAN.

Minimum climb gradient:

- 400 ft/NM (6.6%) if cleared via SID KOVAS 7A;
- 320 ft/NM (5.3%) if cleared via SID CAR 7A.

Turn as IAS MAX 220 kt.

2. If cleared for SID CAR 7C after take off proceed on track 317° until leaving 1000 ft, then turn left on track 107°. Intercept and follow QDR 137° CAL NDB (TR 137°) until 16NM DEC TACAN.

Minimum climb gradient: 320 ft/NM (5.3%) till FL 90.

3. If cleared via SID KOVAS 5N: after take off proceed on track 317° until leaving 1000 ft, then turn right bound to DEC NDB.

Minimum climb gradient: 420 ft/NM (6.9%) till FL 90.

SID DESCRIPTION**KOVAS 7A**

Turn left to intercept and follow QDR 120° DEC NDB (TR 300°). When at D3 DEC TACAN turn right to intercept and follow QDR 014° DEC NDB bound to KOVAS.

Minimum climb gradient 400 ft/NM (6.6%) till FL 150.

Turns at IAS MAX 220 KT.

CAR 7A

Turn left to intercept and follow RDL 275° CAR VOR (TR 095°) bound to CAR VOR-DME.

Minimum climb gradient 320 ft/NM (5.3%) until leaving 4000 ft.

Turns at IAS MAX 220 kt.

KOVAS 5N

Leave DEC NDB on QDR 014° (TR 014°) bound to KOVAS.

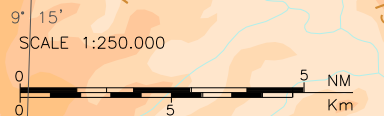
CAR 7C (ATC discretion)

Turn left to intercept and follow RDL 275° CAR VOR (TR 095°) bound to CAR VOR-DME.

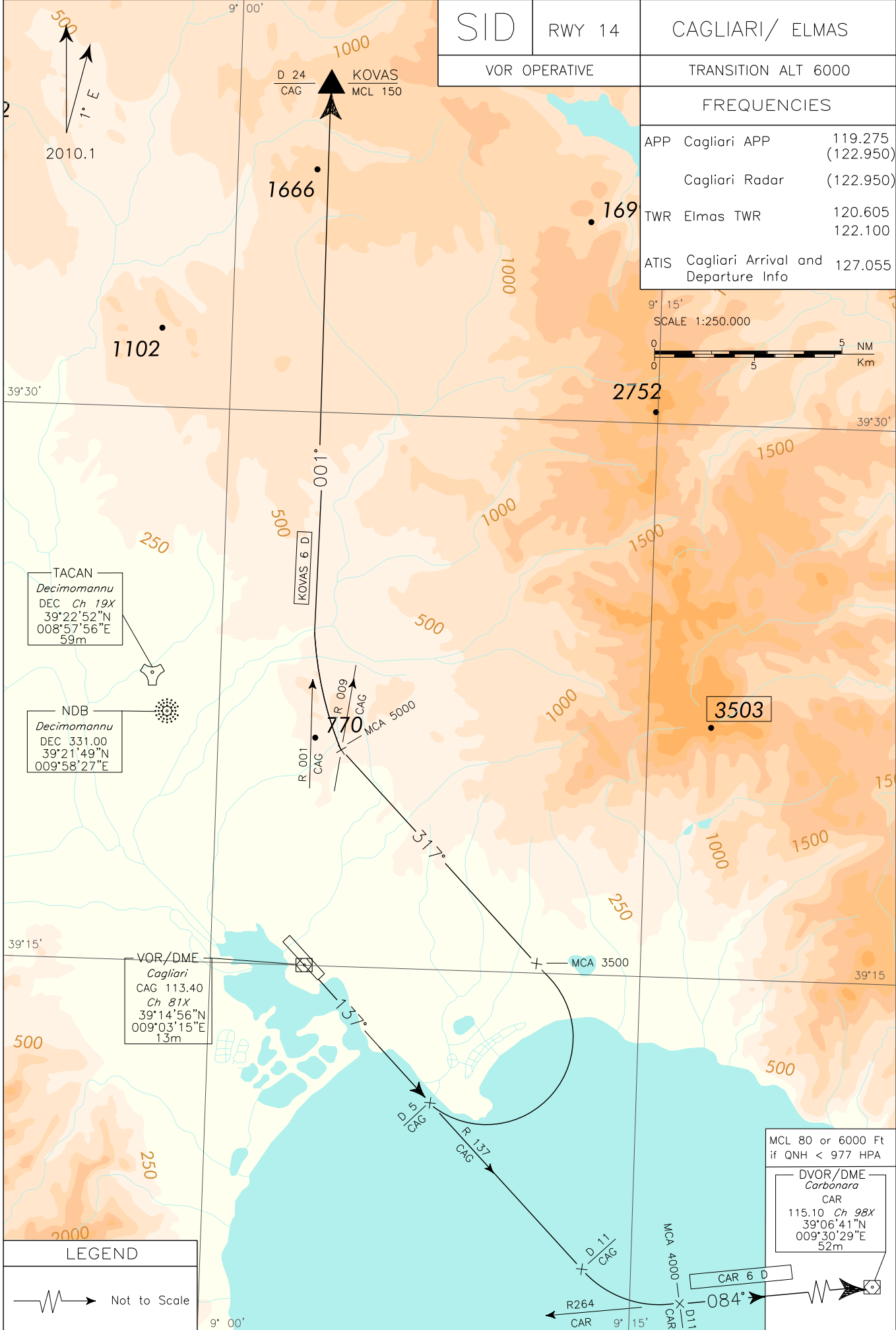
Intenzionalmente bianca

Intentionally left blank

SID	RWY 14	CAGLIARI/ ELMAS
VOR OPERATIVE		TRANSITION ALT 6000
FREQUENCIES		
APP	Cagliari APP	119.275 (122.950)
	Cagliari Radar	(122.950)
TWR	Elmas TWR	120.605 122.100
ATIS	Cagliari Arrival and Departure Info	127.055



CHANGE: FREQ BOX UPDATED



LEGEND	
	Not to Scale

MCL 80 or 6000 Ft if QNH < 977 HPA
DVOR/DME Carbonara CAR 115.10 Ch 98X 39°06'41"N 009°30'29"E 52m

PARTENZE PER RWY 14 (VOR OPERATIVO)**PROCEDURA DI SALITA INIZIALE**

Dopo il decollo procedere su rotta 137° (TR 137°).

Gradiente minimo di salita (ATC):

- 400 ft/NM (6.6%) fino a FL 150 se autorizzati via SID KOVAS 6D;
- 320 ft/NM (5.3%) se autorizzati via SID CAR 6D.

Virata con IAS MAX 220 kt.

DESCRIZIONE DELLE SID**KOVAS 6D**

A 5NM CAG DME virare a sinistra su rotta 317° (completando la virata a 3500ft o al di sopra) e, intercettando RDL 009 CAG VOR, virare a destra su RDL 001 CAG VOR (TR 001°) diretti a KOVAS (RDL 001/24 NM CAG VOR/DME – RDL 328/38 NM CAR VOR/DME).

MCA/MCL: INT TR 317°/RDL 009 CAG VOR, 5000 FT; KOVAS FL 150

CAR 6D

A 11 NM CAG DME virare a sinistra per intercettare e seguire RDL 264 CAR VOR (TR 084°) per CAR VOR/DME.

MCA/MCL: RDL 264/11NM CAR VOR/DME, 4000 ft;
CAR VOR/DME, FL 80 o/or 6000 ft se/if QNH inferiore a/lower than 977 HPA

DEPARTURE FROM RWY 14 (VOR OPERATIVE)**INITIAL CLIMB PROCEDURES**

After take off proceed on track 137° (TR 137°).

Minimum climb gradient (ATC):

- 400 ft/NM (6.6%) up to FL 150 if cleared via SID KOVAS 6D;
- 320 ft/NM (5.3%) if cleared via SID CAR 6D.

Turn as IAS MAX 220 kt.

SID DESCRIPTION**KOVAS 6D**

At 5NM CAG DME turn left on TR 317° (to complete the turn at 3500ft or above) and, intercepting RDL 009 CAG VOR, turn right on RDL 001 CAG VOR (TR 001°) bound to KOVAS (RDL 001/24 NM CAG VOR/DME – RDL 328/38 NM CAR VOR/DME).

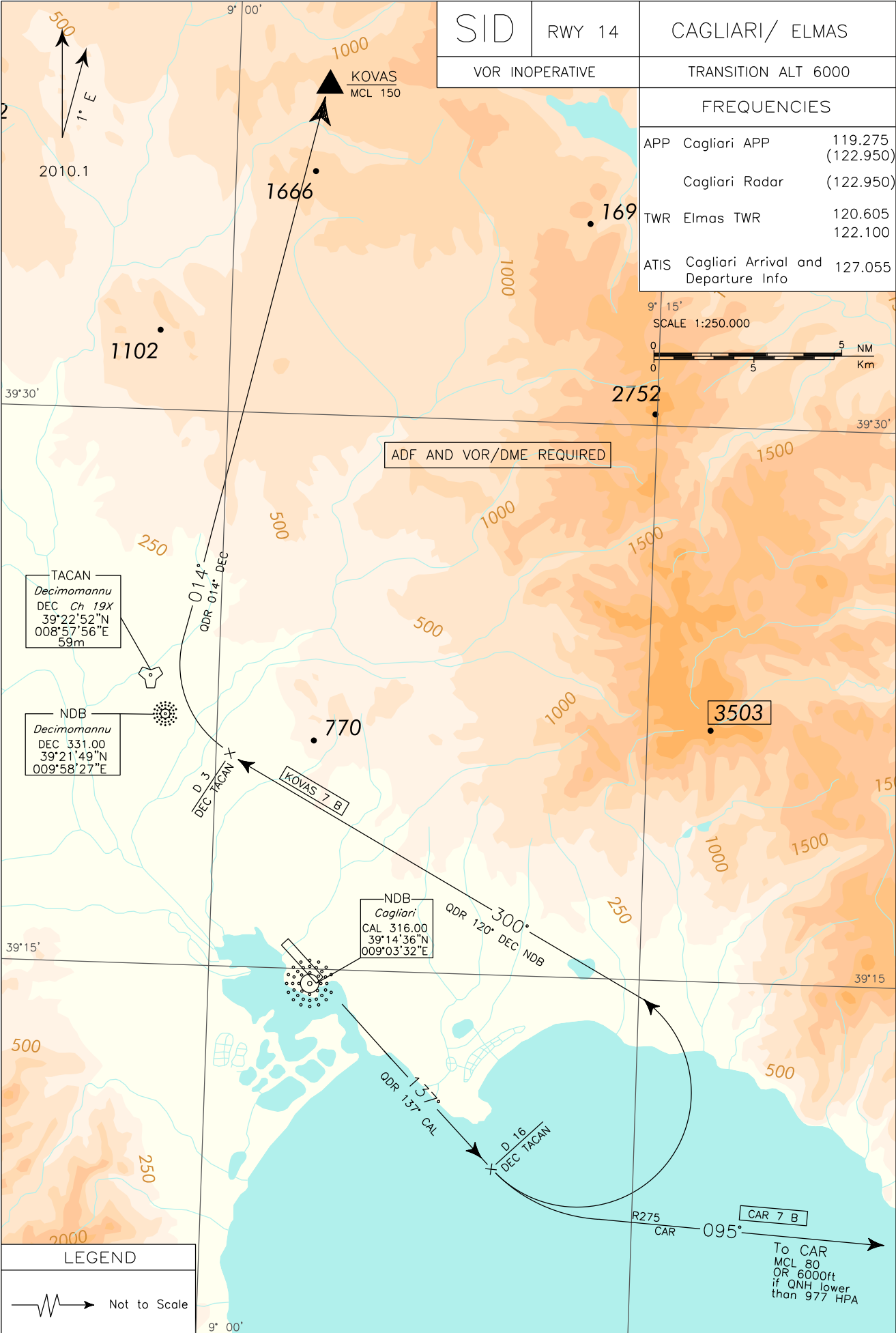
CAR 6D

At 11 NM CAG DME turn left to intercept and follow RDL 264 CAR VOR (TR 084°) bound to CAR VOR/DME.

Intenzionalmente bianca

Intentionally left blank

SID	RWY 14	CAGLIARI/ ELMAS
VOR INOPERATIVE		TRANSITION ALT 6000
FREQUENCIES		
APP	Cagliari APP	119.275 (122.950)
	Cagliari Radar	(122.950)
TWR	Elmas TWR	120.605 122.100
ATIS	Cagliari Arrival and Departure Info	127.055



CHANGE: FREQ BOX UPDATED

LEGEND

Not to Scale

To CAR
MCL 80
OR 6000ft
if QNH lower
than 977 HPA

PARTENZE PER RWY 14 (VOR INOPERATIVO)**PROCEDURA DI SALITA INIZIALE**

Dopo il decollo intercettare e seguire QDR 137° CAL NDB (TR 137°) fino a 16NM DEC TACAN.

DESCRIZIONE DELLE SID**KOVAS 7B**

Virare a sinistra e procedere su QDR 120° DEC NDB (TR 300°)
A 3NM da DEC TACAN virare a destra per intercettare e seguire QDR 014° DEC NDB (TR 014°) diretti a KOVAS.

Gradiente minimo di salita: 428ft/NM (7%) fino a raggiungere FL150.

Virate con IAS MAX 220kt.

DEPARTURE FROM RWY 14 (VOR INOPERATIVE)**INITIAL CLIMB PROCEDURES**

After take intercept and follow QDR 137° CAL NDB (TR 137°) until 16NM DEC TACAN.

SID DESCRIPTION**KOVAS 7B**

Turn left and proceed on QDR 120° DEC NDB (TR 300°). At 3NM DEC TACAN turn right to intercept and follow QDR 014° DEC NDB (TR 014°) bound to KOVAS.

Minimum climb gradient: 428ft/NM (7%) till reaching FL150.

Turns at IAS MAX 220kt.

MCL: KOVAS FL 150

CAR 7B

Virare a sinistra per intercettare e seguire RDL/QDR 275° CAR VOR (TR 095°) per CAR VOR/DME.

Gradiente minimo di salita: 320ft/NM (5.3%) fino a lasciare 4000 ft.

Virate con IAS MAX 220kt.

CAR 7B

Turn left to intercept and follow RDL/QDR 275° CAR VOR (TR 095°) bound to CAR VOR/DME.

Minimum climb gradient: 320ft/NM (5.3%) until leaving 4000 ft.

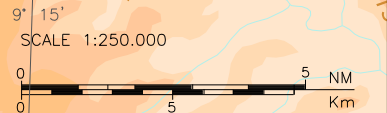
Turns at IAS MAX 220kt.

MCA/MCL: CAR VOR/DME, FL 80 o/or 6000 ft se/if QNH inferiore a/lower than 977 HPA

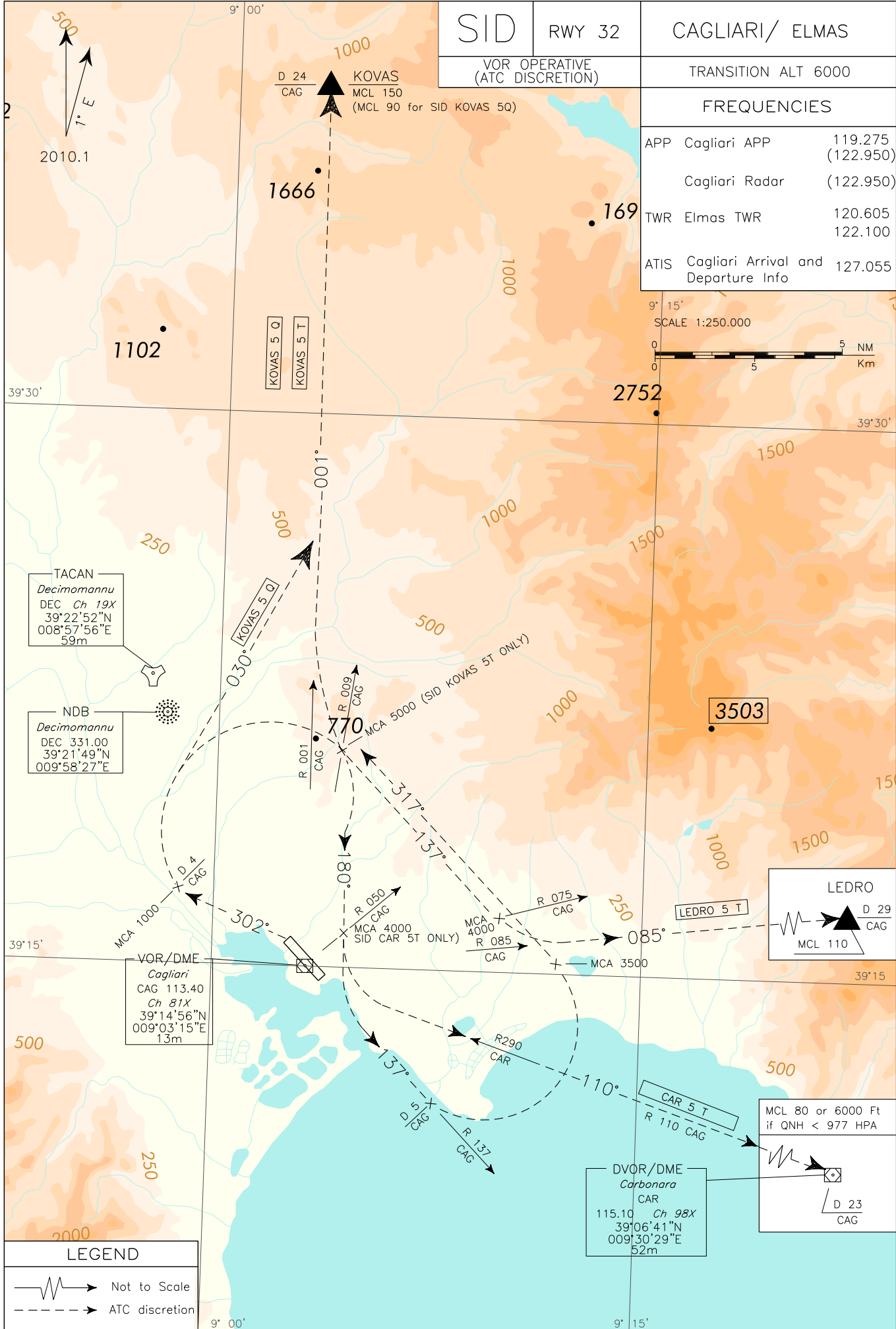
Intenzionalmente bianca

Intentionally left blank

SID	RWY 32	CAGLIARI/ ELMAS
VOR OPERATIVE (ATC DISCRETION)		TRANSITION ALT 6000
FREQUENCIES		
APP Cagliari APP	119.275 (122.950)	
Cagliari Radar	(122.950)	
TWR Elmas TWR	120.605 122.100	
ATIS Cagliari Arrival and Departure Info	127.055	



CHANGE: FREQ BOX UPDATED



LEGEND	
	Not to Scale
	ATC discretion

**PARTENZE PER RWY 32 VOR OPERATIVO
(a discrezione ATC)****PROCEDURA DI SALITA INIZIALE**

Dopo il decollo procedere su TR 302° ed a 4 NM CAG DME, da raggiungere non al di sotto di 1000 ft, virare a destra per inserirsi sulla SID assegnata.

Gradiente minimo di salita (ATC):

- 300 ft/NM (4.9%) fino a FL 150 se autorizzati via SID KOVAS 5T;
- 320 ft/NM (5.3%) se autorizzati via SID CAR 5T (fino a 4000 ft) e LEDRO 5T (fino a FL 110);
- 420 ft/NM (6.9%) fino a FL 150 se autorizzati via SID KOVAS 5Q.

Virata con IAS MAX 220 kt.

DESCRIZIONE DELLE SID**LEDRO 5T (a discrezione ATC)**

Eseguita la procedura di salita iniziale, proseguire su rotta 137° e attraversando RDL 075 CAG VOR, virare a sinistra su RDL 085 (TR 085°) diretti al LEDRO (RDL 085/29 NM CAG VOR/DME – RDL 037 NM CAR VOR/DME).

MCA/MCL: INT TR 137°/RDL 075 CAG VOR, 4000 FT; LEDRO FL 110

KOVAS 5T (a discrezione ATC)

Eseguita la procedura di salita iniziale, proseguire su rotta 180° per intercettare e seguire RDL 137 CAG VOR (TR 137°). A 5 NM CAG DME virare a sinistra su rotta 317° (completando la virata a 3500 ft o più) e, attraversando RDL 009 CAG VOR virare a destra su RDL 001 (TR 001°) CAG VOR diretti al punto KOVAS (RDL 001/24 NM CAG VOR/DME – RDL 328 NM CAR VOR/DME).

MCA/MCL: INT TR 317°/RDL 009 CAG VOR, 5000 FT; KOVAS FL 150

KOVAS 5Q (a discrezione ATC)

Eseguita la procedura di salita iniziale, virare a destra su rotta 030° fino ad intercettare RDL 001 CAG VOR. Proseguire su RDL 001 CAG VOR (TR 001°) per KOVAS.

MCL: KOVAS: FL 90 (se impossibilitati, informare l'ente ATC / if not able to comply, advice ATC unit)

CAR 5T (a discrezione ATC)

Eseguita la procedura di salita iniziale, proseguire su rotta 180° e attraversando RDL 050 CAG VOR virare a sinistra su RDL 110 CAG VOR o RDL 290 CAR VOR (TR 110°) per CAR VOR/DME.

MCA/MCL: INT TR 180°/RDL 050 CAG VOR, 4000 FT;
CAR VOR/DME FL 80 o/or 6000 FT se/if QNH inferiore a/lower than 977 HPA

**DEPARTURE FROM RWY 32 VOR OPERATIVE
(ATC DISCRETION)****INITIAL CLIMB PROCEDURES**

After take off proceed on TR 302° and, at 4 NM CAG DME, to be reached not below 1000 ft, turn right to join the assigned SID.

Minimum climb gradient (ATC):

- 300 ft/NM (4.9%) up to FL 150 if cleared via SID KOVAS 5T;
- 320 ft/NM (5.3%) if cleared via SID CAR 5T (up to 4000 ft) and LEDRO 5T (up to FL 110);
- 420 ft/NM (6.9%) up to FL 150 if cleared via SID KOVAS 5Q.

Turn as IAS MAX 220 kt.

SID DESCRIPTION**LEDRO 5T (ATC discretion)**

Initial climb procedure completed, proceed on track 137° and crossing RDL 075 CAG VOR, turn left on RDL 085 (TR 085°) to LEDRO (RDL 085/29 NM CAG VOR/DME – RDL 037 NM CAR VOR/DME).

KOVAS 5T (ATC discretion)

Initial climb procedure completed, proceed on track 180° to join RDL 137 CAG VOR (TR 137°). At 5 NM CAG DME turn left on track 317° (to complete the turn at 3500 ft or more) and, crossing RDL 009 CAG VOR turn right on RDL 001 (TR 001°) CAG VOR to KOVAS (RDL 001/24 NM CAG VOR/DME – RDL 328 NM CAR VOR/DME).

KOVAS 5Q (ATC discretion)

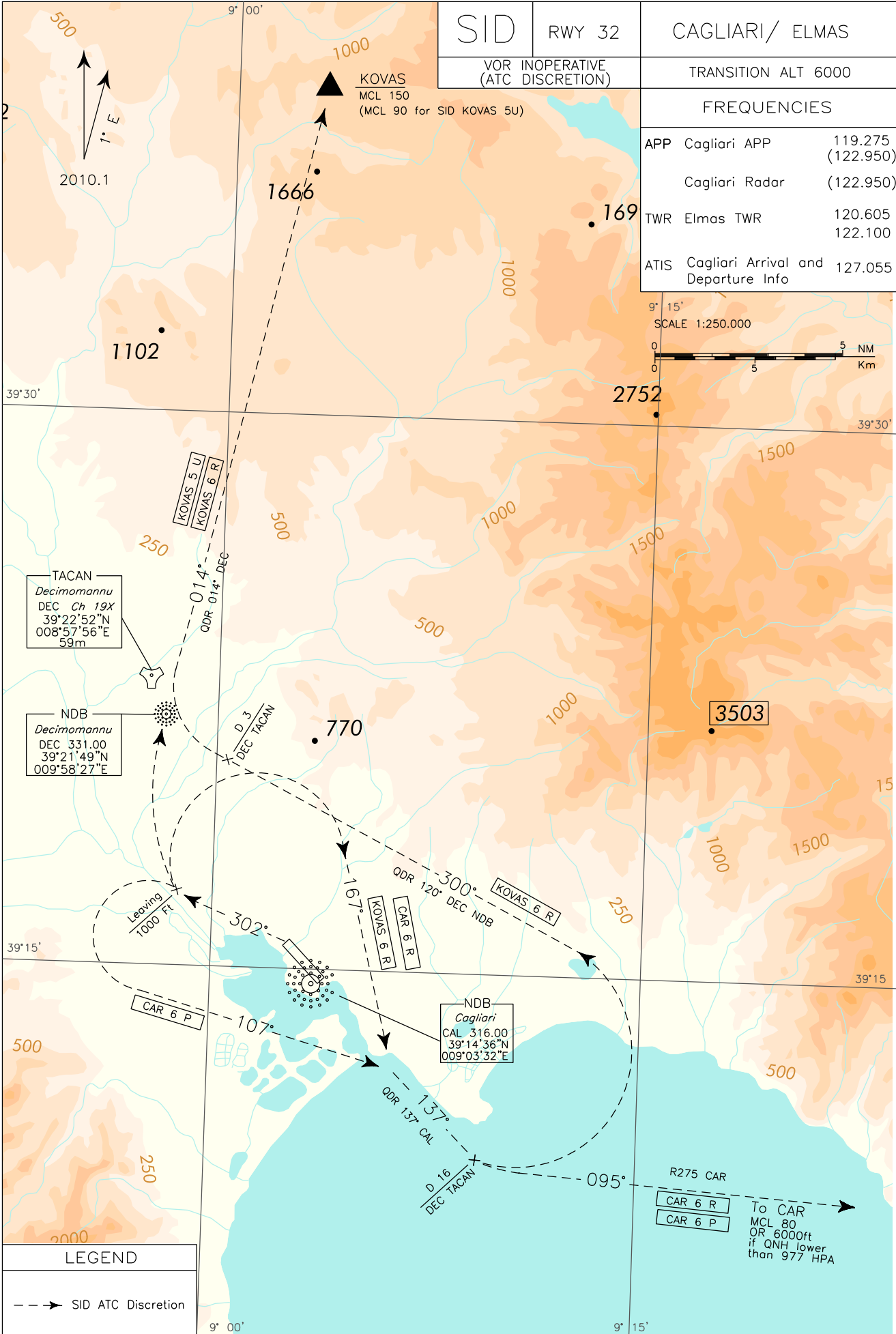
Initial climb procedure completed, turn right on track 030° to join RDL 001 CAG VOR. Proceed on RDL 001 CAG VOR (TR 001°) bound to KOVAS.

CAR 5T (ATC discretion)

Initial climb procedure completed, proceed on track 180° and crossing RDL 050 CAG VOR turn left on RDL 110 CAG VOR or RDL 290 CAR VOR (TR 110°) to CAR VOR/DME.

Intenzionalmente bianca

Intentionally left blank



SID RWY 32 VOR INOPERATIVO (a discrezione ATC)**PROCEDURA DI SALITA INIZIALE**

1. Se autorizzati per SID KOVAS 6R o CAR 6R dopo il decollo procedere su rotta 302° fino a lasciare 1000 ft, quindi virare a destra su rotta 167°. Intercettare e seguire QDR 137° CAL NDB (TR 137°) fino a 16NM DEC TACAN.

Gradiente minimo di salita consigliato:

- 400 ft/NM (6.6%) se autorizzati via SID KOVAS 6R;
- 320 ft/NM (5.3%) se autorizzati via SID CAR 6R.

Virata con IAS MAX 220 KT.

2. Se autorizzati per SID CAR 6P dopo il decollo procedere su rotta 302° fino a lasciare 1000 ft, quindi virare a sinistra su rotta 107°. Intercettare e seguire QDR 137° CAL NDB (TR 137°) fino a 16NM DEC TACAN.

3. Se autorizzati per SID KOVAS 5U: dopo il decollo procedere su rotta 302° fino a lasciare 1000 ft, quindi virare a destra diretti su DEC NDB.

Gradiente minimo di salita: 420 ft/NM (6.9%) fino a FL 90.

DESCRIZIONE SID**KOVAS 6R (a discrezione ATC)**

Virare a sinistra per intercettare e seguire QDR 120° DEC NDB (TR 300°). A D3 DEC TACAN virare a destra per intercettare e seguire QDR 014° DEC NDB per il punto KOVAS.

Gradiente minimo di salita 400 ft/NM (6.6%) fino a FL 150.

Virate con IAS MAX 220 KT.

MCL: KOVAS: FL 150

CAR 6R (a discrezione ATC)

Virare a sinistra per intercettare e seguire RDL/QDR 275° CAR VOR (TR 095°) per CAR VOR-DME.

Gradiente minimo di salita 320 ft/NM (5.3%) fino a lasciare 4000 ft.

Virate con IAS MAX 220 KT.

MCA/MCL: CAR VOR/DME, FL 80 o/or 6000 FT se il QNH è inferiore a / if QNH lower than 977 HPA

KOVAS 5U (a discrezione ATC)

Lasciare DEC NDB su QDR 014° (TR 014°), diretti a KOVAS.

MCL: KOVAS: FL 90

CAR 6P (a discrezione ATC)

Virare a sinistra per intercettare e seguire RDL/QDR 275° CAR VOR (TR 095°) per CAR VOR-DME.

MCA/MCL: CAR VOR/DME, FL 80 o/or 6000 ft se/if QNH inferiore a/lower than 977 HPA

SID RWY 32 VOR INOPERATIVE (ATC discretion)**INITIAL CLIMB PROCEDURE**

1. If cleared for SID KOVAS 6R or CAR 6R after take off proceed on track 302° till leaving 1000 ft, then turn right on track 167°. Intercept and follow QDR 137° CAL NDB (TR 137°) until 16NM DEC TACAN.

Minimum climb gradient suggested:

- 400 ft/NM (6.6%) if cleared via SID KOVAS 6R;
- 320 ft/NM (5.3%) if cleared via SID CAR 6R.

Turn as IAS MAX 220 KT.

2. If cleared for SID CAR 6P after take off proceed on track 302° until leaving 1000 ft, then turn left on track 107°. Intercept and follow QDR 137° CAL NDB (TR 137°) until 16NM DEC TACAN.

3. If cleared via SID KOVAS 5U: after take off proceed on track 302° until leaving 1000 ft, then turn right bound to DEC NDB.

Minimum climb gradient: 420 ft/NM (6.9%) up to FL 90.

SID DESCRIPTION**KOVAS 6R (ATC discretion)**

Turn left to intercept and follow QDR 120° DEC NDB (TR 300°). When at D3 DEC TACAN turn right to intercept and follow QDR 014° DEC NDB bound to KOVAS.

Minimum climb gradient 400 ft/NM (6.6%) until FL 150.

Turns at IAS MAX 220 KT.

CAR 6R (ATC discretion)

Turn left to intercept and follow RDL/QDR 275° CAR VOR (TR 095°) bound to CAR VOR-DME.

Minimum climb gradient 320 ft/NM (5.3%) until leaving 4000 ft.

Turns at IAS MAX 220 KT.

KOVAS 5U (ATC discretion)

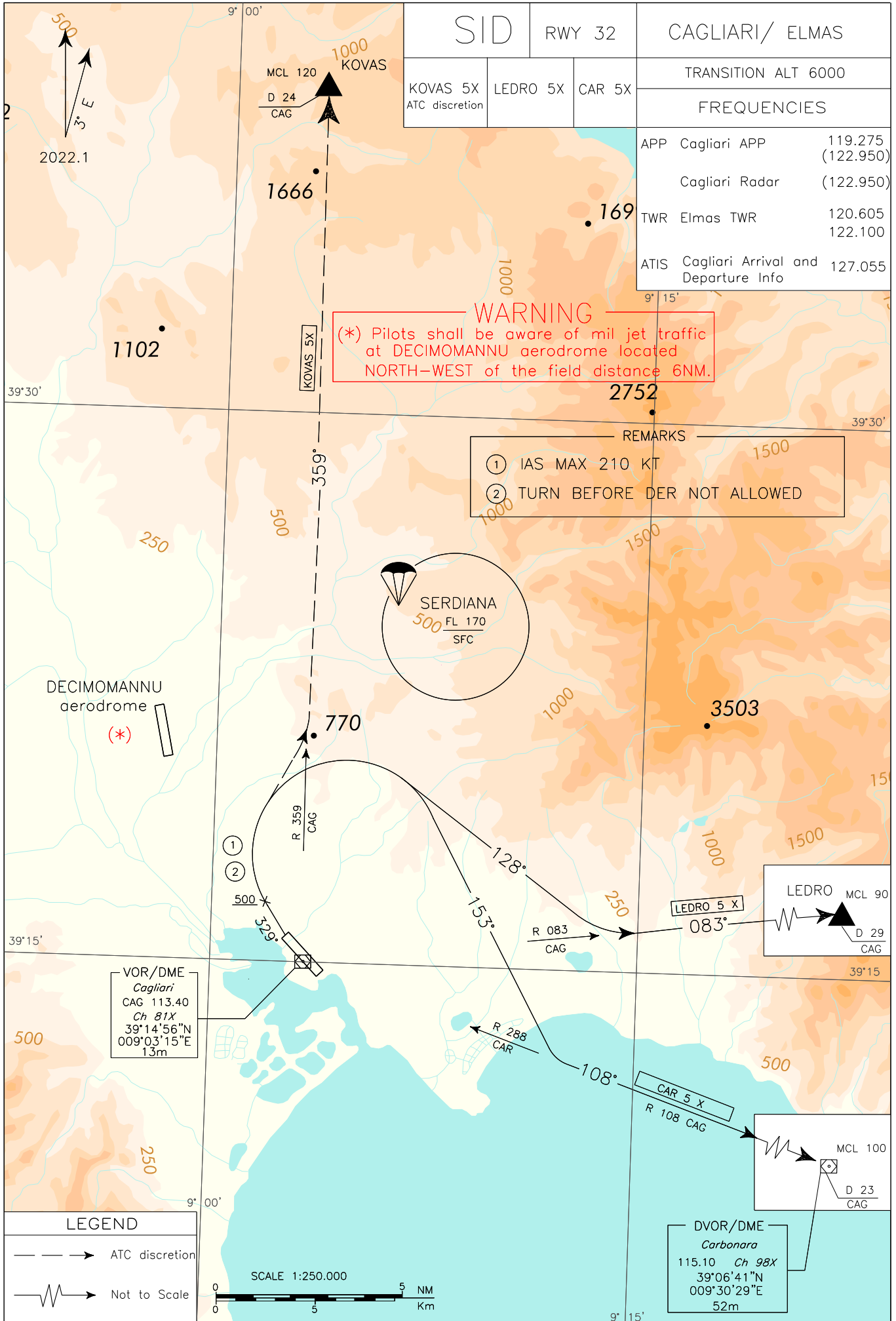
Leave DEC NDB on QDR 014° (TR 014°) bound to KOVAS.

CAR 6P (ATC discretion)

Turn left to intercept and follow RDL/QDR 275° CAR VOR (TR 095°) bound to CAR VOR-DME.

Intenzionalmente bianca

Intentionally left blank



CHANGE: FREQ AND REMARKS BOX UPDATED

**PARTENZE PER RWY 32
KOVAS 5X (a discrezione ATC), LEDRO 5X, CAR 5X**

PROCEDURA DI SALITA INIZIALE

Dopo il decollo procedere con prua 329° e attraversando 500 ft, virare a destra per inserirsi sulla SID assegnata.

Parametri di virata e salita:

- a) Velocità in virata limitata a 210 KT;
- b) Gradiente minimo di salita (causa ostacoli e motivi ATC): 8% (490 ft/NM) fino a lasciare i livelli riportati in ciascuna SID;
- c) Virata prima della DER non permessa.

Il gradiente di salita iniziale non prende in considerazione la presenza di ostacoli "close-in".

DESCRIZIONE DELLE SID

KOVAS 5X (a discrezione ATC)

Eseguita la procedura di salita iniziale, intercettare e seguire RDL359 CAG VOR (TR – 359°) per il punto KOVAS.

Gradiente minimo di salita: 8% (490 ft/NM).

MCL: KOVAS, FL 120

LEDRO 5X

Eseguita la procedura di salita iniziale, proseguire su prua 128° per intercettare e seguire RDL083 CAG VOR (TR-083°) per il punto LEDRO.

Gradiente minimo di salita: 8% (490 ft/NM) fino ad attraversare 6000 ft.

MCL: LEDRO FL 90

CAR 5X

Eseguita la procedura di salita iniziale, proseguire su prua 153° per intercettare e seguire RDL108 CAG VOR or RDL288 CAR VOR (TR-108°) per CAR DVOR/DME (RDL108/23 NM CAG).

Gradiente minimo di salita: 8% (490 ft/NM) fino ad attraversare FL70 (o TL se più alto).

MCL: CAR DVOR/DME FL 100

**DEPARTURE FROM RWY 32
KOVAS 5X (ATC discretion), LEDRO 5X, CAR 5X**

INITIAL CLIMB PROCEDURES

After take off proceed on heading 329° and crossing 500 ft turn right to join the assigned SID.

Turn and climb parameters:

- a) Departure turn limited to 210 KT;
- b) Minimum climb gradient (due to obstacles and ATC reason): 8% (490 ft/NM) until passing levels reported in each SID;
- c) Turn before DER not allowed.

Minimum climb gradient does not take in consideration presence of "close-in" obstacles.

SID DESCRIPTION

KOVAS 5X (ATC discretion)

Initial climb executed, join and follow RDL359 CAG VOR (TR-359°) bound to KOVAS.

Minimum climb gradient: 8% (490 ft/NM).

LEDRO 5X

Initial climb executed, proceed on heading 128° to join and follow RDL083 CAG VOR (TR-083°) bound to LEDRO.

Minimum climb gradient: 8% (490 ft/NM) until crossing 6000 ft.

CAR 5X

Initial climb executed, proceed on heading 153° to join and follow RDL108 CAG VOR or RDL288 CAR VOR (TR-108°) bound to CAR DVOR/DME (RDL108/23 NM CAG).

Minimum climb gradient: 8% (490 ft/NM) until crossing FL70 (or TL if higher).

Intenzionalmente bianca

Intentionally left blank

SID RNAV1	RWY 14	CAGLIARI/ ELMAS
KOVAS 5K	CAR 5N	TRANSITION ALT 6000
FREQUENCIES		
APP Cagliari APP		119.275 (122.950)
Cagliari Radar		(122.950)
TWR Elmas TWR		120.605 122.100
ATIS Cagliari Arrival and Departure Info		127.055

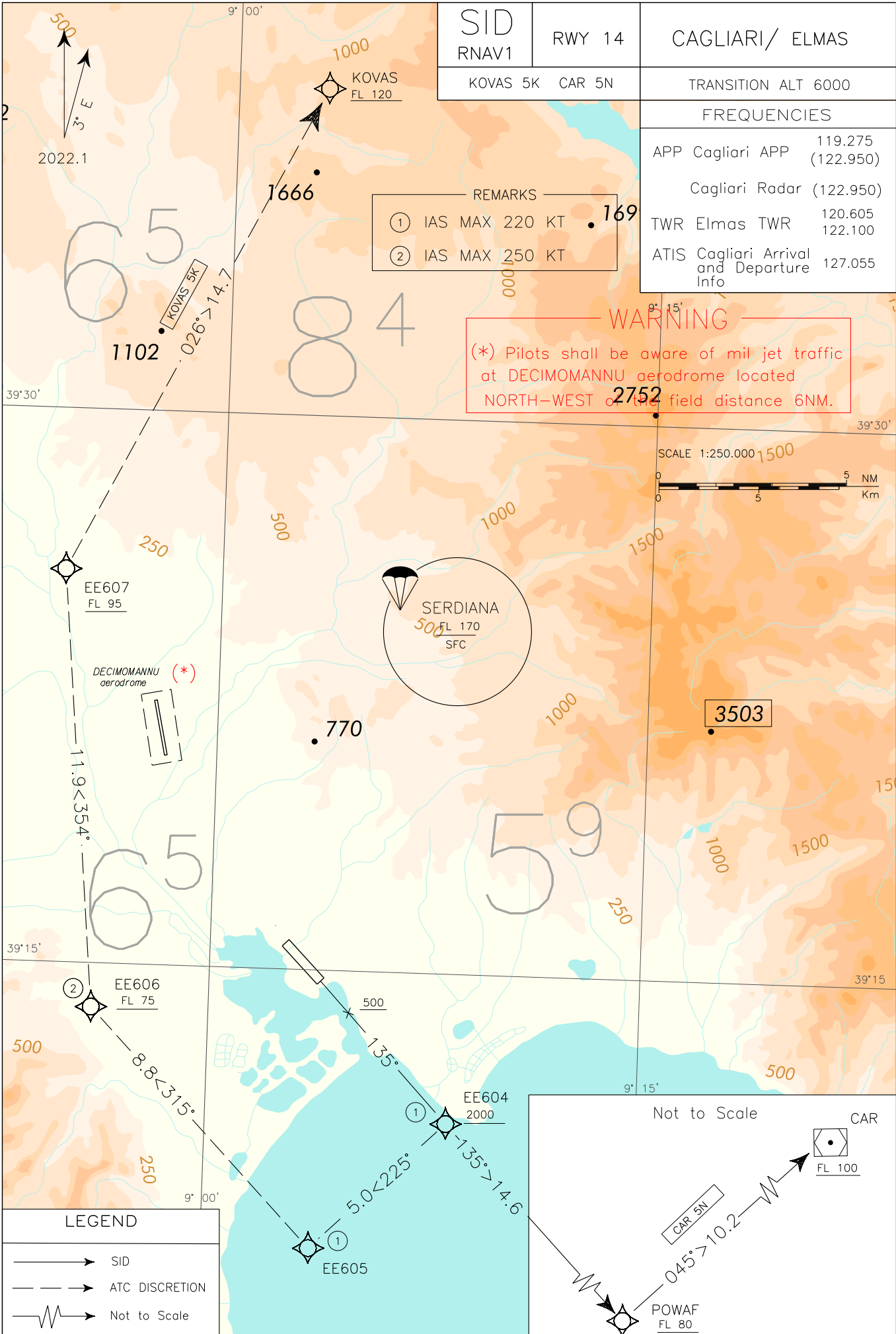
REMARKS

- ① IAS MAX 220 KT
- ② IAS MAX 250 KT

WARNING

(*) Pilots shall be aware of mil jet traffic at DECIMOMANNU aerodrome located NORTH-WEST of the field distance 6NM.

CHANGE: NEW PROCEDURE



SID RNAV1 RWY 14 CAGLIARI ELMAS (LIEE)

REMARKS

1. Minimum climb gradient 7% (430ft/NM) until FL75 for SID KOVAS 5K.
2. Minimum climb gradient 7% (430ft/NM) until FL80 for SID CAR 5N.

SID KOVAS 5K (ATC DISCRETION)

Path Terminator	Waypoint Identifier	Fly Over	Track °Mag (°T)	Magnetic Variation (°)	Distance (NM)	Turn Direction	Altitude Constraint	Speed Limit KIAS	Navigation Performance
CA	-	-	135°(138.0°)	3	-	-	+500	-	RNAV 1
CF	EE604	-	135°(138.0°)	3	-	-	+2000	220	RNAV 1
TF	EE605	-	225°(228.0°)	3	5.0	R	-	220	RNAV 1
TF	EE606	-	315°(318.0°)	3	8.8	R	+FL75	250	RNAV 1
TF	EE607	-	354°(356.8°)	3	11.9	-	+FL95	-	RNAV 1
TF	KOVAS	-	026°(028.9°)	3	14.7	-	+FL120	-	RNAV 1

SID CAR 5N

Path Terminator	Waypoint Identifier	Fly Over	Track °Mag (°T)	Magnetic Variation (°)	Distance (NM)	Turn Direction	Altitude Constraint	Speed Limit KIAS	Navigation Performance
CA	-	-	135°(138.0°)	3	-	-	+500	-	RNAV 1
CF	EE604	-	135°(138.0°)	3	-	-	+2000	220	RNAV 1
TF	POWAF	-	135°(138.0°)	3	14.6	-	+FL80	-	RNAV 1
TF	CAR	-	045°(048.2°)	3	10.2	L	+FL100	-	RNAV 1

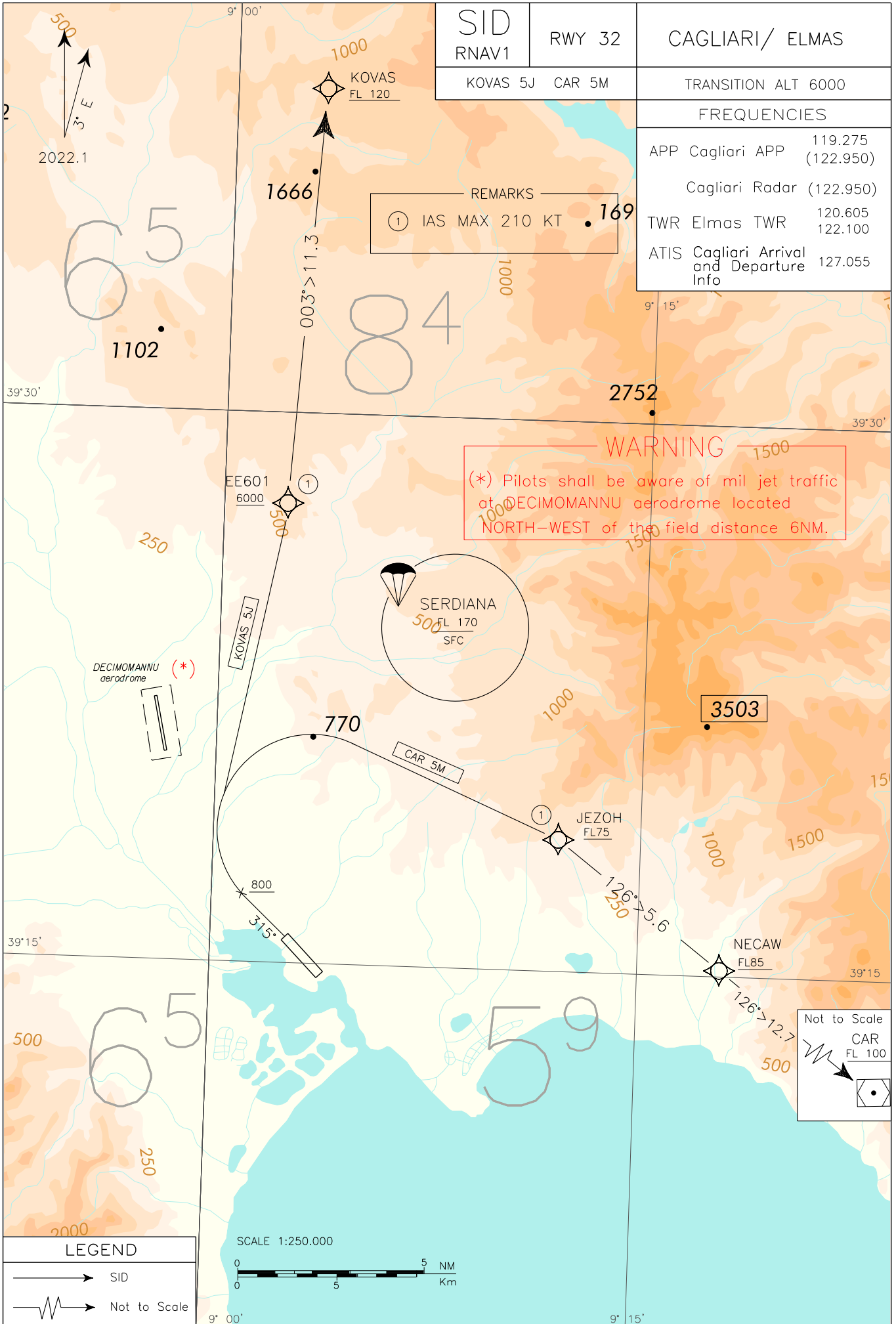
Waypoint Table Formatted according ARINC 424 standards

SID RNAV1 RWY 14 LIEE

WAYPOINT	LATITUDE	LONGITUDE
KOVAS	N39384400	E009041400
CAR	N39064100	E009302900
EE604	N39104832	E009081288
EE605	N39072740	E009032629
EE606	N39135847	E008555284
EE607	N39254956	E008550130
POWAF	N38595457	E009204582

Intenzionalmente bianca

Intentionally left blank

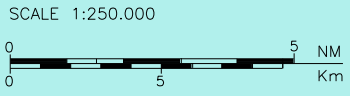


CHANGE: NEW PROCEDURE

LEGEND

→ SID

⚡ Not to Scale



Not to Scale

CAR
FL 100

SID RNAV1 RWY 32 CAGLIARI ELMAS (LIEE)

Warning: “Close In” obstacles penetrating OIS 2.5% exist, but they were not considered for the published procedure design gradient.

REMARKS

1. Turn before DER not allowed.
2. Minimum climb gradient 8% (490ft/NM) until FL120 for SID KOVAS 5J.
3. Minimum climb gradient 8% (490ft/NM) until FL75 for SID CAR 5M.

SID KOVAS 5J

Path Terminator	Waypoint Identifier	Fly Over	Track °Mag (°T)	Magnetic Variation (°)	Distance (NM)	Turn Direction	Altitude Constraint	Speed Limit KIAS	Navigation Performance
CA	-	-	315°(318.0°)	3	-	-	+800	-	RNAV 1
DF	EE601	-	-	-	-	R	+6000	210	RNAV 1
TF	KOVAS	-	003°(005.6°)	3	11.3	-	+FL120	-	RNAV 1

SID CAR 5M

Path Terminator	Waypoint Identifier	Fly Over	Track °Mag (°T)	Magnetic Variation (°)	Distance (NM)	Turn Direction	Altitude Constraint	Speed Limit KIAS	Navigation Performance
CA	-	-	315°(318.0°)	3	-	-	+800	-	RNAV 1
DF	JEZOH	-	-	-	-	R	+FL75	210	RNAV 1
TF	NECAW	-	126°(129.3°)	3	5.6	-	+FL85	-	RNAV 1
TF	CAR	-	126°(129.4°)	3	12.7	-	+FL100	-	RNAV 1

Waypoint Table Formatted according ARINC 424 standards SID RNAV1 RWY 32 LIEE

WAYPOINT	LATITUDE	LONGITUDE
KOVAS	N39384400	E009041400
CAR	N39064100	E009302900
EE601	N39273080	E009024813
JEZOH	N39181974	E009121640
NECAW	N39144519	E009175293

Intenzionalmente bianca

Intentionally left blank