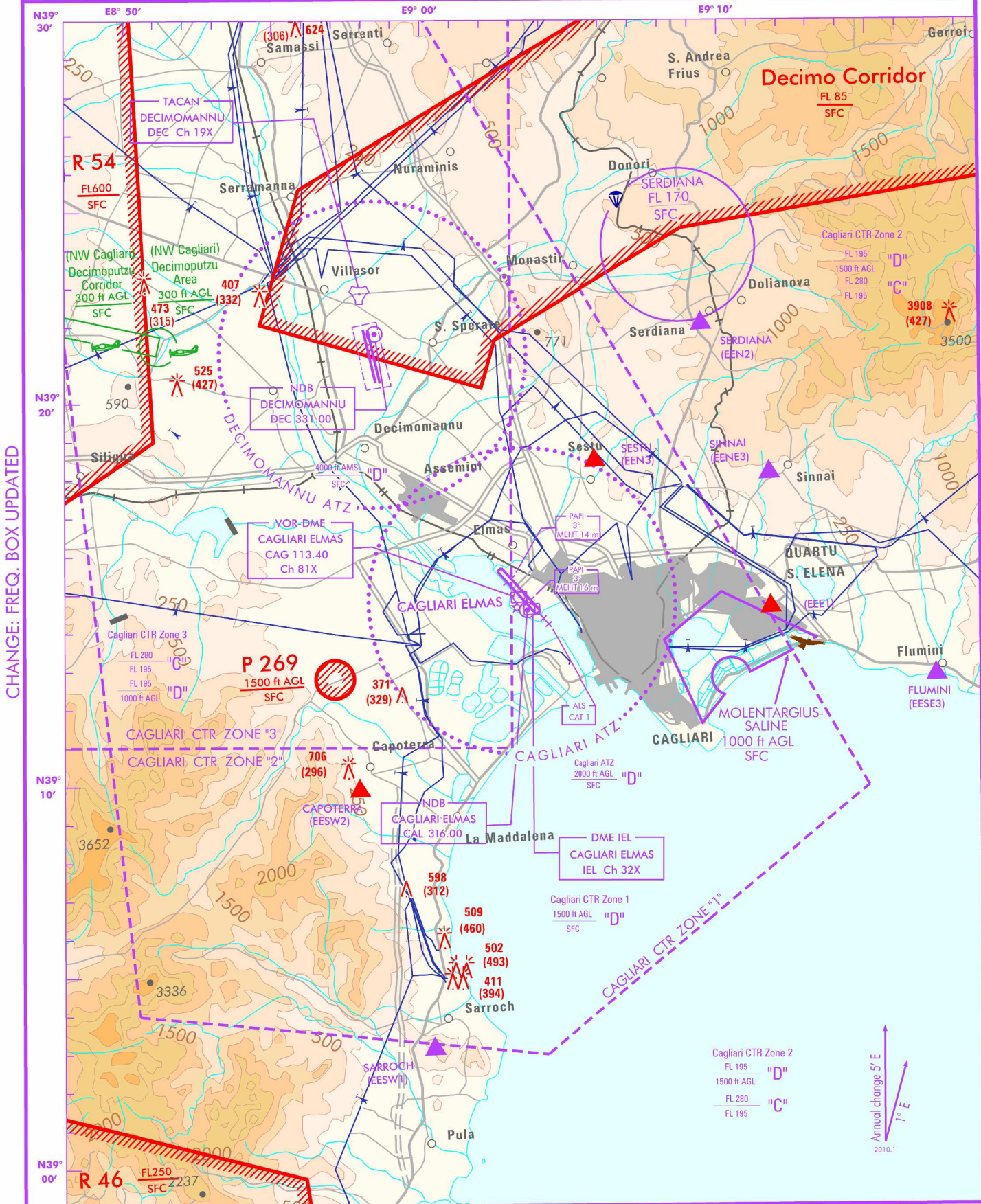


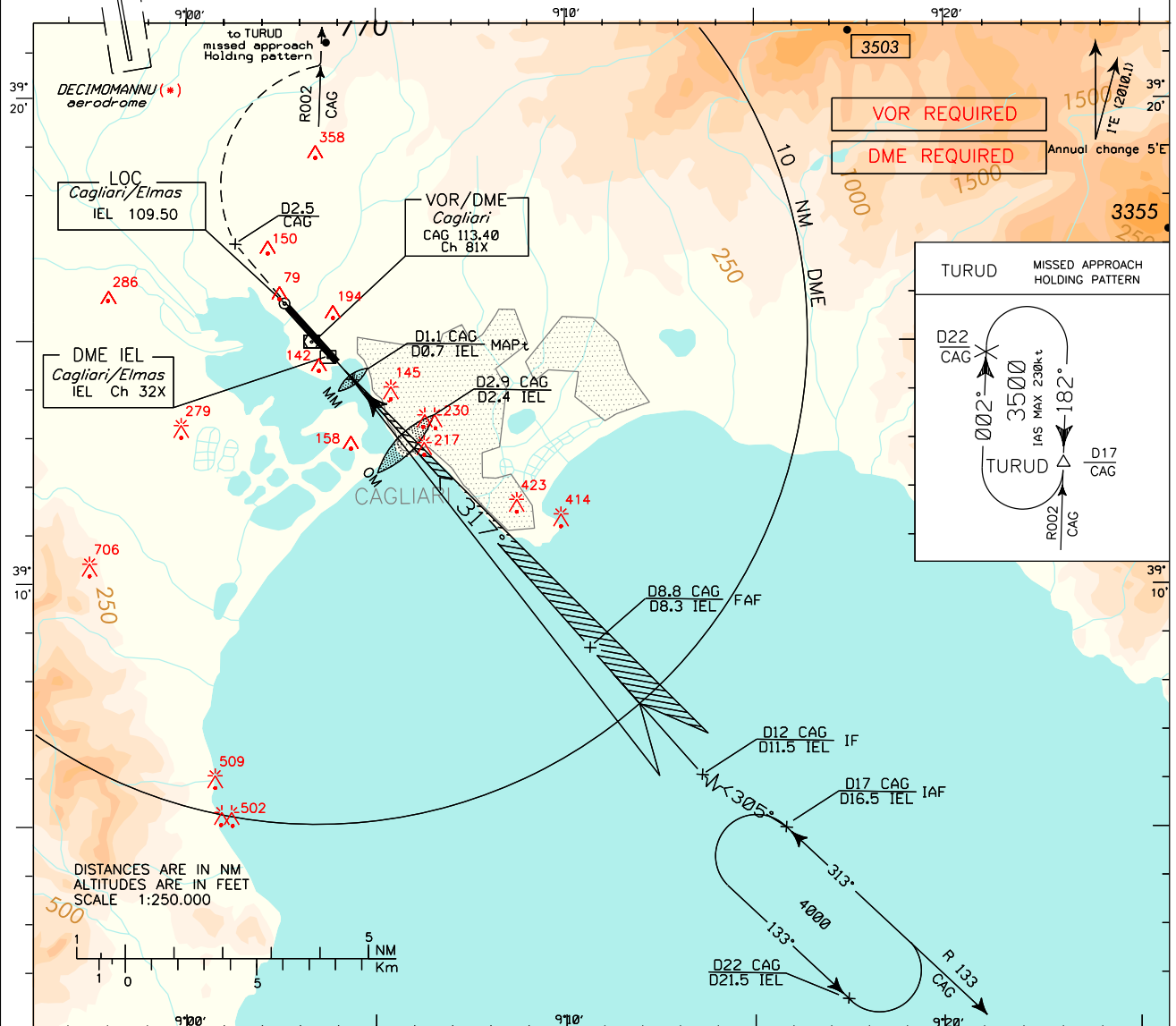
	F I S	Roma Info	127.125	134.125	AD ELEV	L I E E	<h1>CAGLIARI / ELMAS</h1>
	APP	Cagliari Approach	{	119.275			
	TWR	Elmas Tower		(122.950)			
	GND	Elmas Ground		120.605	125.430		



AIRSPACE CLASSIFICATION (See AIP-Italia ENR 1.4)	TRANSITION ALT 6000 ft
	Bearings are magnetic. ELEV and ALT in ft.

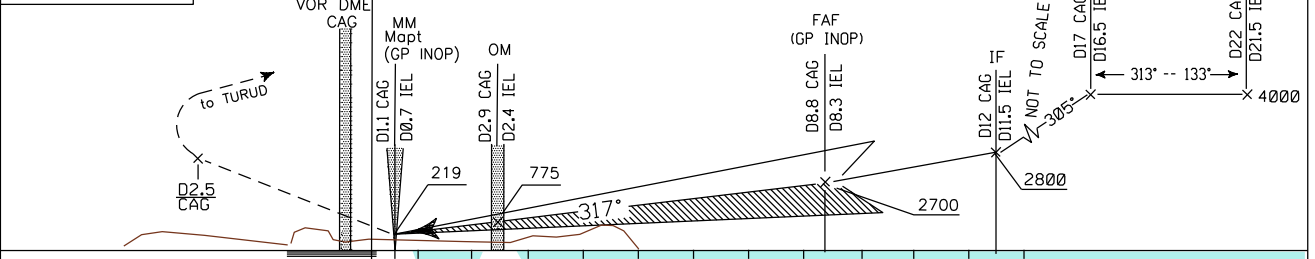
<p>(*) WARNING: Pilots shall pay attention to DECIMOMANNU aerodrome NORTH-WEST of the field - distance 6NM.</p>	APP Cagliari APP	119.275	AD ELEV	LIEE	CAGLIARI/ ELMAS
	Cagliari Radar	(122.950)			
	TWR Elmas TWR	120.605	11		
	ATIS Cagliari Arrival and departure Info	122.100 127.055			
ILS or LOC-W RWY 32					

DOC 8168 ED 6-2014
CHANGE: FREQ BOX UPDATED



TRANSITION ALT 6000
MISSED APPROACH: Proceed runway heading climbing to 3500ft. Passing 2.5 NM CAG DME, turn right to join and follow R002 CAG VOR (TR002°) Bound to TURUD holding pattern (HF RDL002/17NM CAG VOR/DME). Hold BTN 17NM and 22NM CAG DME INBD TR 182°, right turns, IAS MAX 230kt.

RDH 17.50 M
GP 3°



IEL DME	THR ELEV 6	0	1	2	3	4	5	6	7	8	9	10	11	12	IEL DME
6 5 4 3 2 1 0 1 2 3 4 5 6 7 8 9 10 11 12 NM															

* STRAIGHT IN APPROACH	OCA (OCH)	A	B	C	D	CIRCLING SECTOR 	FT PER MIN	GS	LO-MAP	DIST	ALT (HGT)	MNM CAG	SECT VOR	ALT
	ILS	235 (229)	245 (239)	254 (248)	264 (258)		424	80	1:19	7.5DME	2382 (2377)			
CIRCLING	GP INOP	440 (430)					530	100	1:04	6.5DME	2064 (2059)	6100	179	5700
		1100 (1090)					742	140	0:45	4.5DME	1428 (1423)			
							848	160	0:39	3.5DME	1110 (1105)			

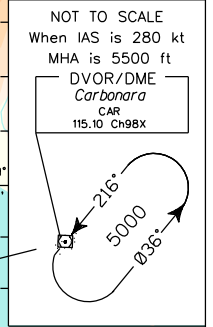
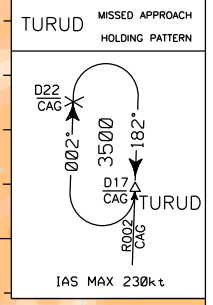
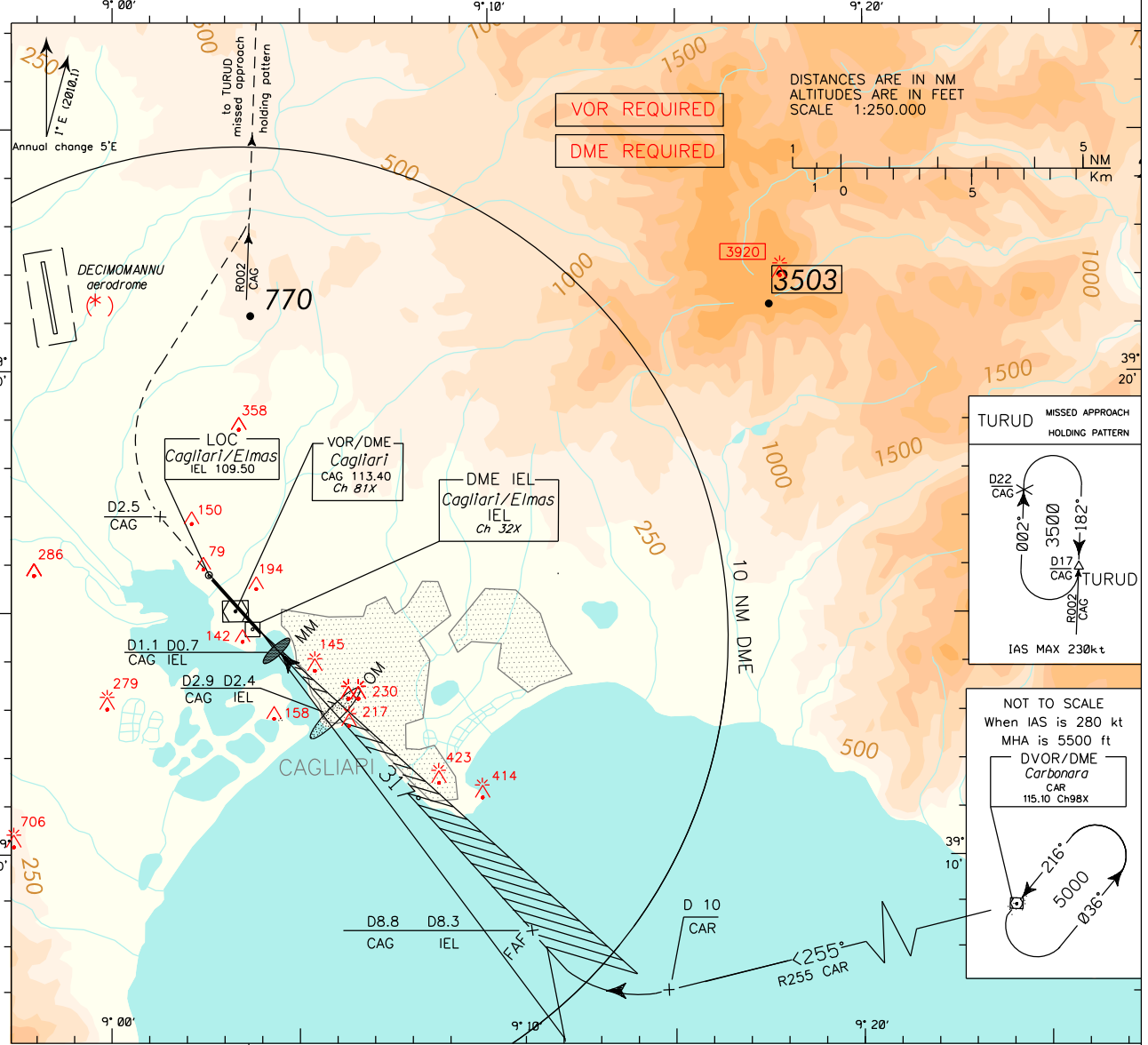
ICAO - INSTRUMENT APPROACH CHART

AD 2 LIEE 5-5

DOC 8168 ED 6-2014

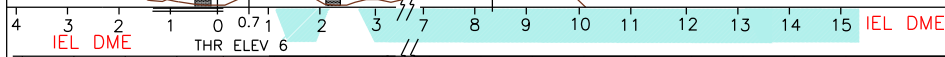
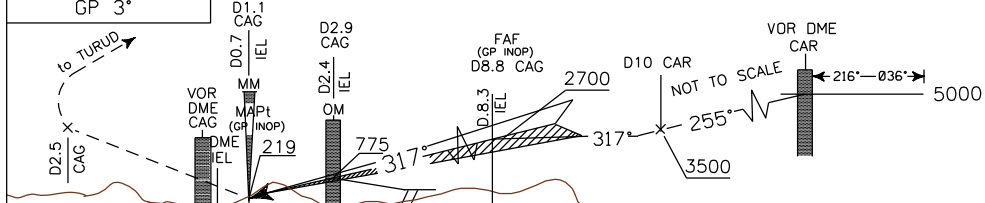
CHANGE: FREQ BOX UPDATED

<p>(*) WARNING: Pilots shall pay attention to DECIMOMANNU aerodrome North-West of the field - distance 6 NM.</p>	APP Cagliari APP	119.275	AD ELEV	LIEE	CAGLIARI/ELMAS	
	Cagliari Radar	(122.950)				11
	TWR Elmas TWR	120.605				
	ATIS Cagliari Arrival and departure Info	122.100				
		127.055			ILS-Z RWY 32	



TRANSITION ALT 6000
MISSED APPROACH: Proceed runway heading climbing to 3500ft. Passing 2.5 NM CAG DME turn right to join and follow R002 CAG VOR (TR002) Bound to TURUD holding pattern (HF RDL002/17NM CAG VOR/DME). Hold BTN 17NM and 22NM CAG DME INBD TR 182, right turns, IAS MAX 230kt.

ILS RDH 17.50 M
 GP 3°



STRAIGHT IN APPROACH	OCA (OCH)	A	B	C	D	CIRCLING SECTOR 	FT PER MIN	GS	LO-MAP	DIST	ALT (HGT)	MNM SECT CAG	ALT VOR		
	ILS	235 (229)	245 (239)	254 (248)	264 (258)									424	80
CIRCLING	GP INOP	440 (430)				530	100	1 : 04	6.5 DME	2064 (2059)	636	120	0 : 53	5.5 DME	1746 (1741)
		1100 (1090)													

ICAO – INSTRUMENT APPROACH CHART

AD 2 LIEE 5-7

WARNING: Pilots shall pay attention to "DECIMOMANNU" aerodrome North-West of the field - distance 6 NM.

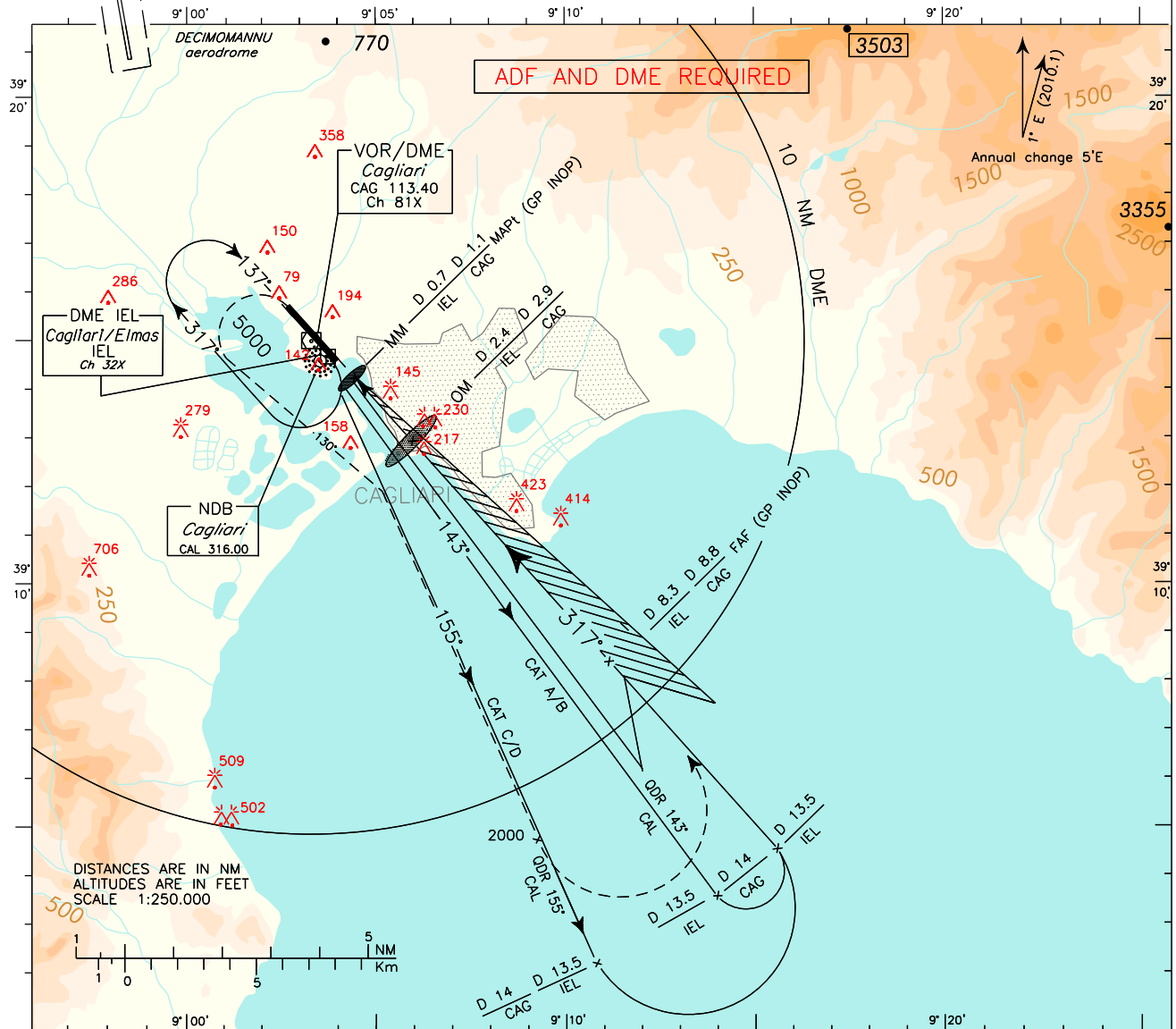
APP Cagliari APP 119.275 (122.950)
 Cagliari Radar (122.950)
 TWR Elmas TWR 120.605
 ATIS Cagliari Arrival and departure Info 122.100 127.055

AD ELEV 11

CAGLIARI/ELMAS
 ILS-Y RWY 32

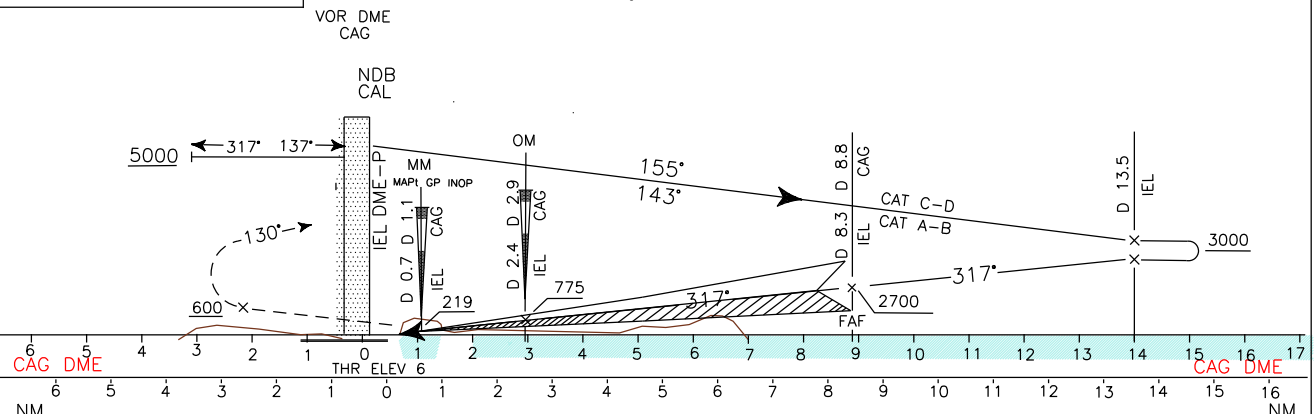
DOC 8168 ED 6-2014

CHANGE: FREQ BOX UPDATED



TRANSITION ALT 6000

MISSED APPROACH: Continue on final track climbing to 5000ft. Crossing 600ft turn left (IAS MAX 170 KT) TR 130° to intercept QDR 155°. Crossing 2000ft, turn left bound to CAL NDB.

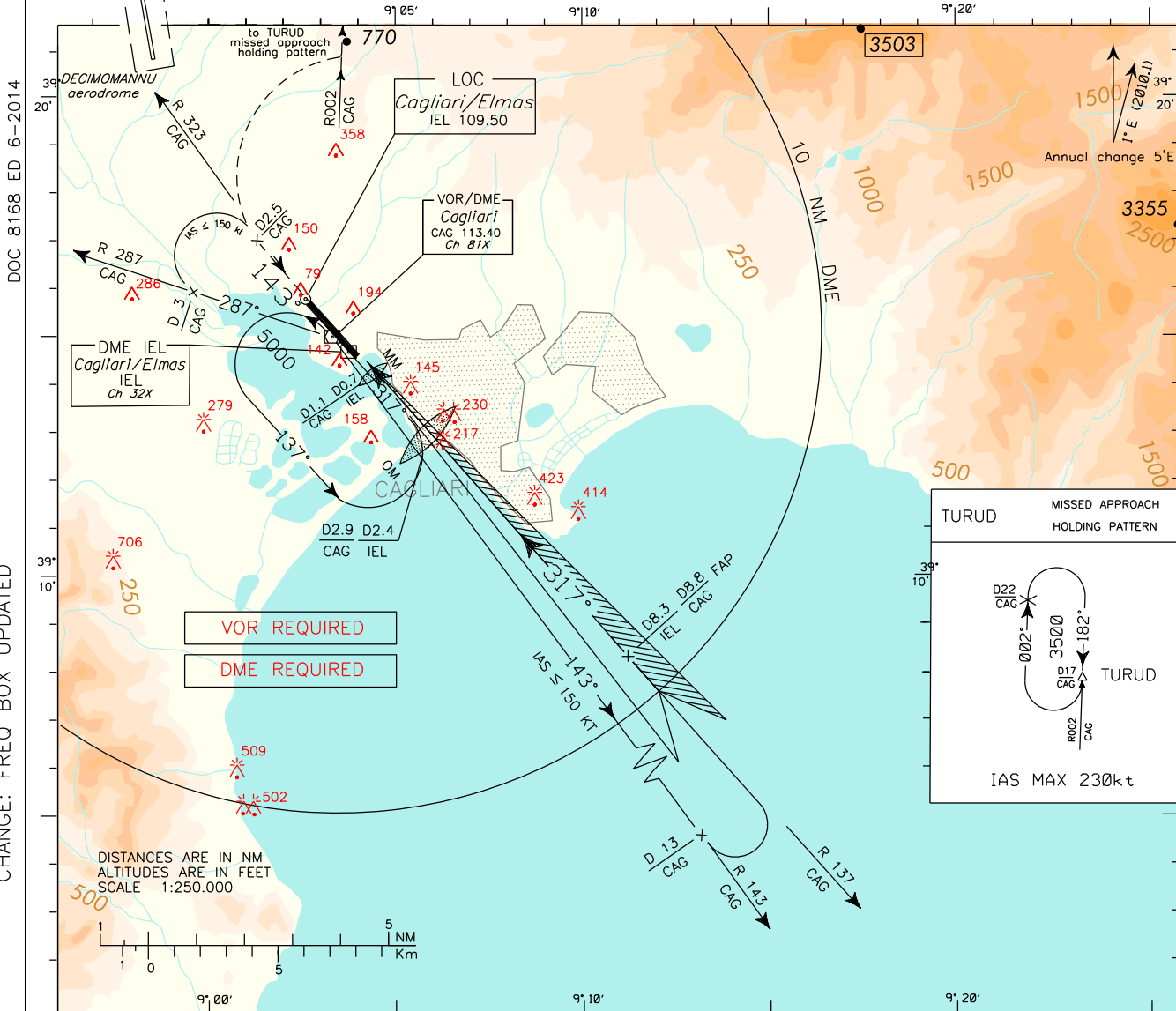


STRAIGHT IN APPROACH	OCA (OCH)				CIRCLING SECTOR	GS	FT MIN	DIST	ALT (HGT)	MNM CAL	SECT	ALT NDB
	A	B	C	D								
ILS	235(229)	245(239)	254(248)	264(258)								
LOC	440 (430)											
CIRCLING	1100 (1090)											

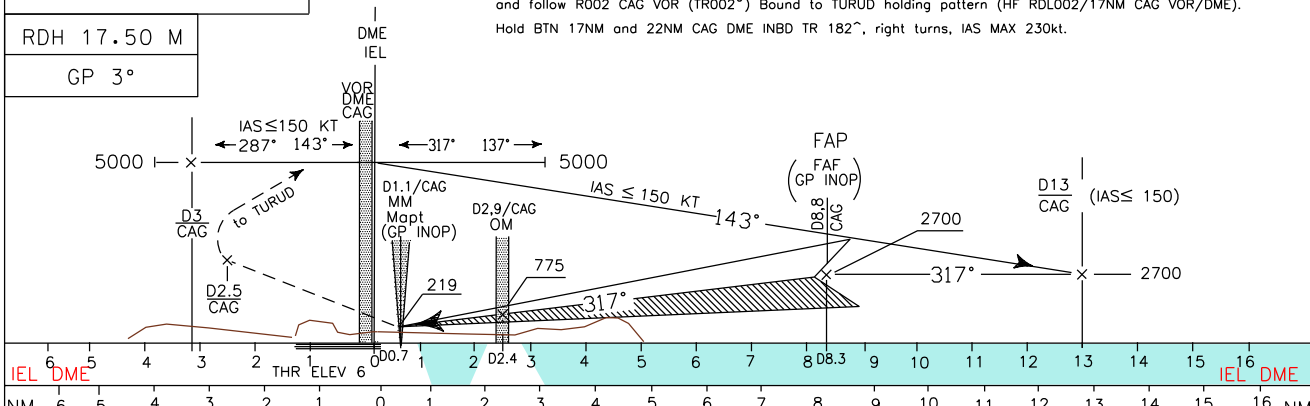
ICAO - INSTRUMENT APPROACH CHART

AD 2 LIEE 5-9

<p>WARNING: Pilots shall pay attention to DECIMOMANNU aerodrome North-West of the field - distance 6 NM.</p>	APP Cagliari APP	119.275 (122.950)	AD ELEV	LIEE	CAGLIARI/ELMAS CAT A-B ILS-X RWY 32
	Cagliari Radar	(122.950)			
	TWR Elmas TWR	120.605 122.100 127.055	11		
	ATIS Cagliari Arrival and departure Info				



TRANSITION ALT 6000 MISSED APPROACH: Proceed runway heading climbing to 3500ft. Passing 2.5 NM CAG DME turn right to join and follow R002 CAG VOR (TR002°) Bound to TURUD holding pattern (HF RDL002/17NM CAG VOR/DME). Hold BTN 17NM and 22NM CAG DME INBD TR 182°, right turns, IAS MAX 230kt.



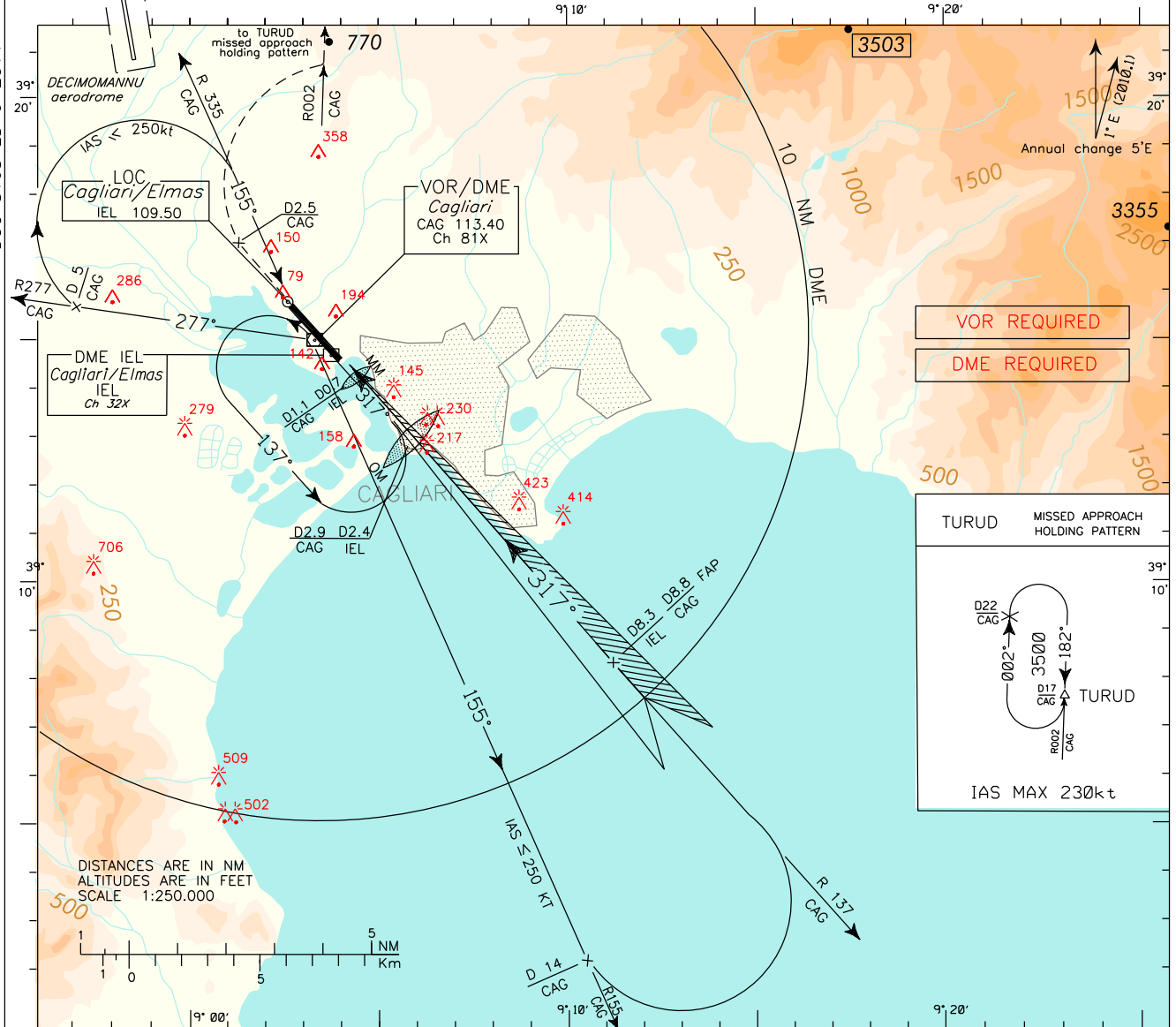
STRAIGHT IN APPROACH	OCA (OCH)				CIRCLING SECTOR	FT PER MIN	GS	LO-MAP	DIST	ALT (HGT)	MNM CAG	SECT VOR	ALT
	A	B	C	D									
ILS CAT A-B	235 (229)	245 (239)				424	80	1 : 19	7.5DME	2382 (2377)			
	LOC	440 (430)				530	100	1 : 04	6.5DME	2064 (2059)			
						636	120	0 : 53	5.5DME	1746 (1741)			
						742	140	0 : 45	4.5DME	1428 (1423)			
						848	160	0 : 39	3.5DME	1110 (1105)			
CIRCLING	1100 (1090)												

ICAO – INSTRUMENT APPROACH CHART

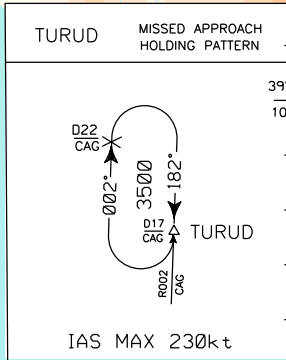
AD 2 LIEE 5-11

WARNING: Pilots shall pay attention to DECIMOMANNU aerodrome North-West of the field – distance 6 NM.	APP Cagliari APP	119.275 (122.950)	AD ELEV	L E E	CAGLIARI/ELMAS CAT C-D ILS-X RWY 32
	Cagliari Radar	(122.950)			
	TWR Elmas TWR	120.605 122.100 127.055	11		
	ATIS Cagliari Arrival and departure Info				

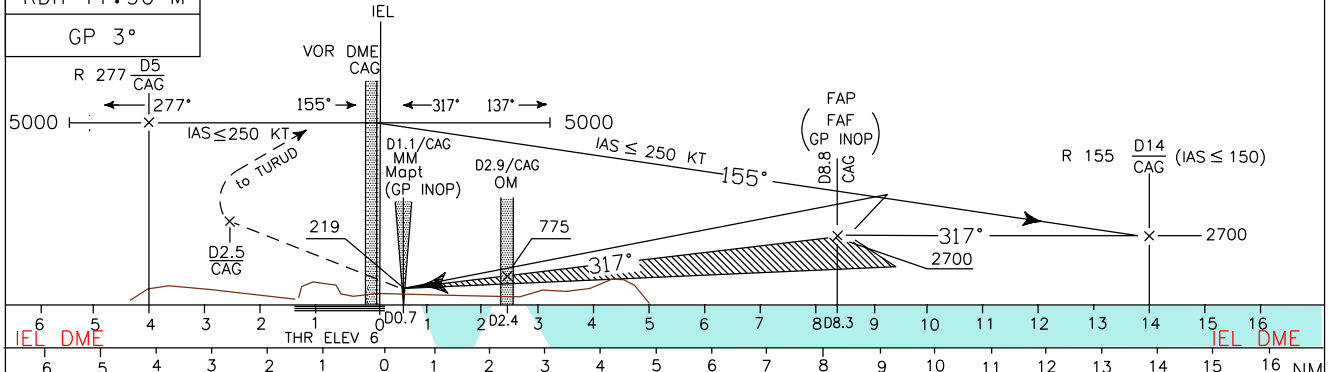
DOC 8168 ED 6-2014
CHANGE: FREQ BOX UPDATED



VOR REQUIRED
DME REQUIRED



TRANSITION ALT 6000
MISSED APPROACH: Proceed runway heading climbing to 3500ft. Passing 2.5 NM CAG DME turn right to join and follow R002 CAG VOR (TR002°) bound to TURUD holding pattern (HF RDL002/17NM CAG VOR/DME). Hold BTN 17NM and 22NM CAG DME INBD TR 182°, right turns, IAS MAX 230kt.



* STRAIGHT IN APPROACH	OCA (OCH)				CIRCLING SECTOR	FT PER MIN	GS	LO-MAP	DIST	ALT (HGT)	MNM	SECT	ALT
	A	B	C	D									
ILS CAT C-D			254 (248)	264 (258)		424	80	1 : 19	7.5DME	2382 (2377)		CAG	VOR
	LOC			440 (430)		530	100	1 : 04	6.5DME	2064 (2059)			
CIRCLING				1100 (1090)		636	120	0 : 53	5.5DME	1746 (1741)			
						742	140	0 : 45	4.5DME	1428 (1423)			
						848	160	0 : 39	3.5DME	1110 (1105)			

ICAO – INSTRUMENT APPROACH CHART

AD 2 LIEE 5-13

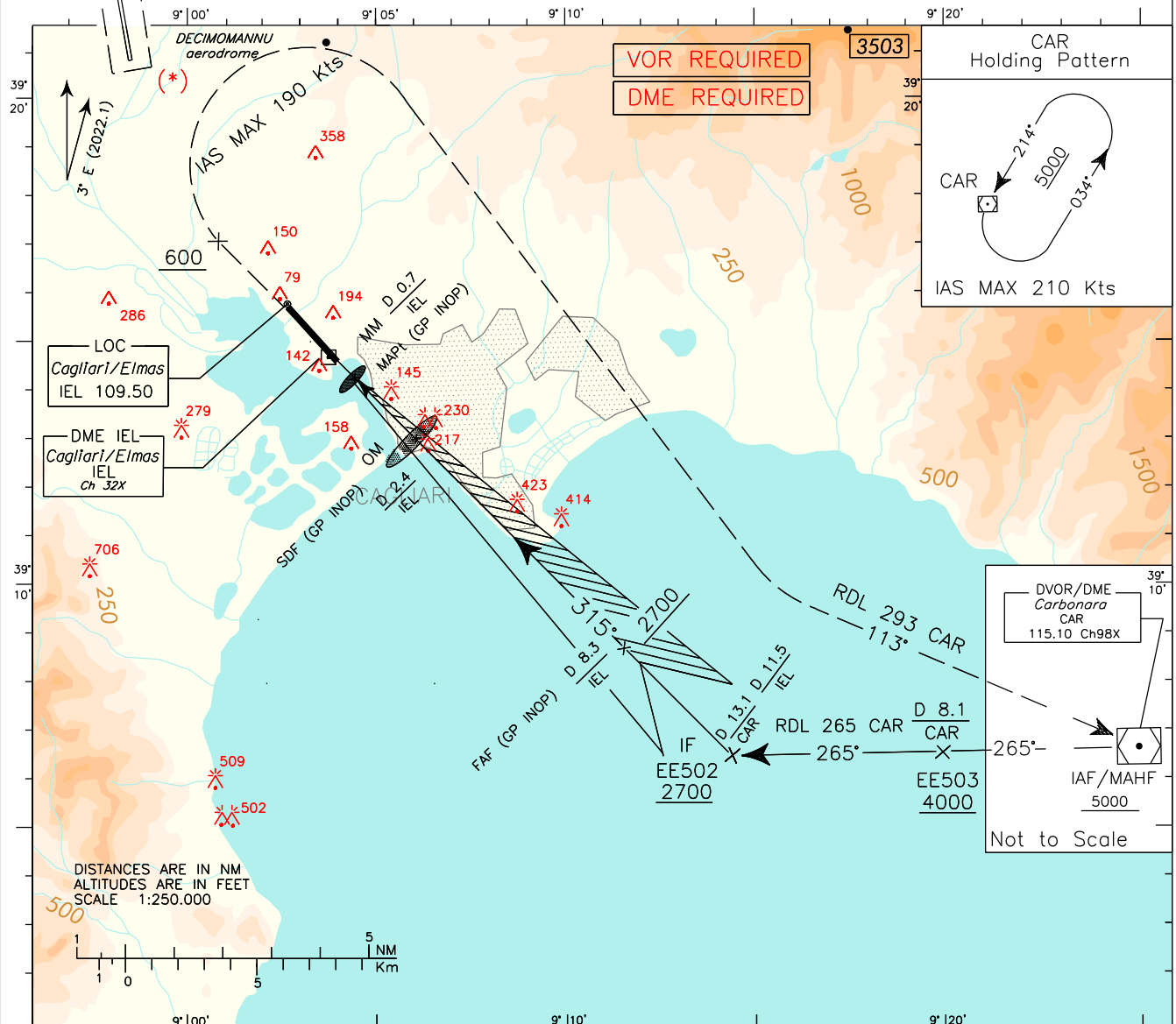
WARNING:
 (*)Pilots shall be aware of mil jet traffic at "DECIMOMANNU" aerodrome located North-West of the field distance 6NM

APP Cagliari APP (119.275)
 Cagliari Radar (122.950)
 TWR Elmas TWR (120.605)
 ATIS Cagliari Arrival and departure Info (122.100 / 127.055)

AD ELEV 11
 LIEE

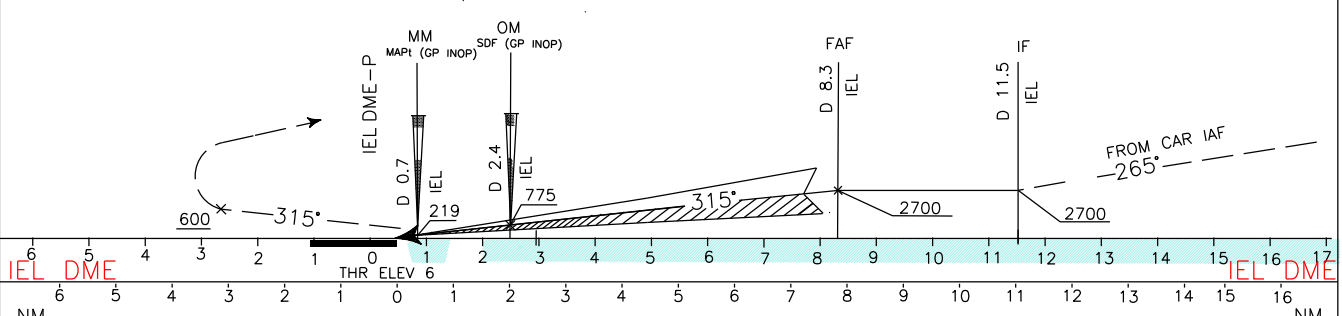
CAGLIARI/ELMAS
 ILS-V RWY 32

DOC 8168 ED 7-2020
 CHANGE: NEW PROCEDURE



TRANSITION ALT 6000
MISSED APPROACH: Continue on final track climbing to 5000ft. Crossing 600ft, not before D0.7 IEL, turn right (IAS MAX 190 KT) to join and follow RDL 293 CAR VOR/DME (TR 113°) bound to CAR VOR/DME holding pattern.

TCH 17.5M
 GP 3°



STRAIGHT IN APPROACH		OCA (OCH)				CIRCLING SECTOR NOT ALLOWED	GS				MNM SECT ALT CAR VOR											
ILS	LOC	A	B	C	D		80	100	120	140		160	180									
ILS		235(229)	245(239)	254(248)	264(258)		8.0	7.0	6.0	5.0	4.0	3.0	2.0	1.4	2554 (2548)	2235 (2229)	1917 (1911)	1598 (1592)	1280 (1274)	961 (955)	643 (637)	440 (434)
LOC		440 (430)																				
CIRCLING		1100 (1090)																				

ENAV – Roma

Edited by AM-CIGA

AIRAC effective date 15 JUN 2023 (A5/23)

DOC 8168 ED 6-2014

CHANGE: FREQ BOX UPDATED

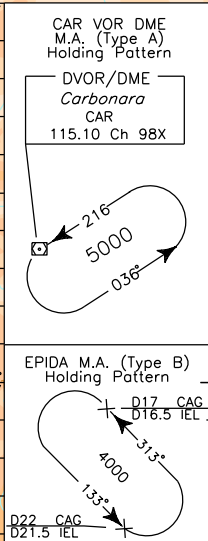
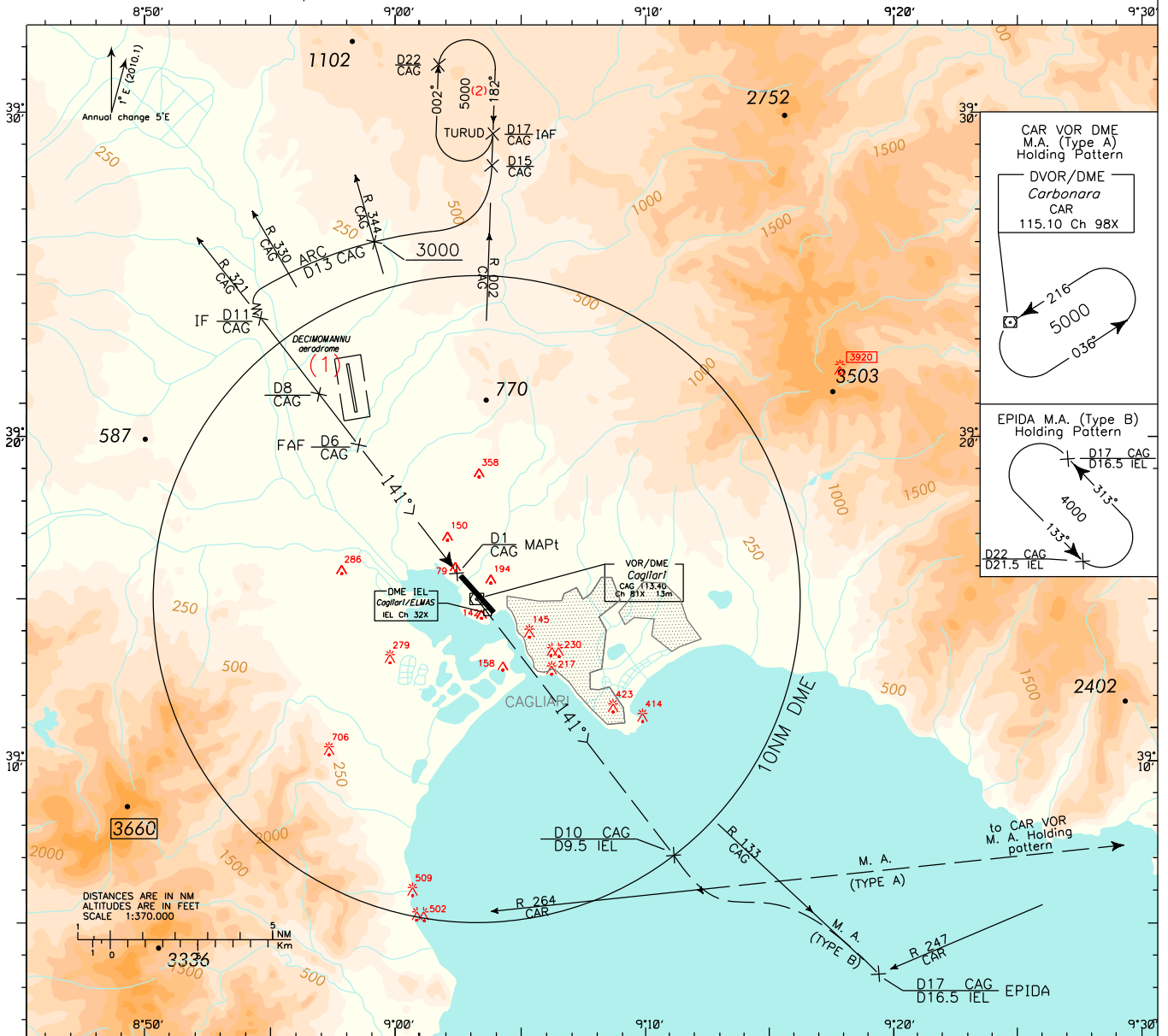
WARNING:
 (1) Pilots shall pay attention to DECIMOMANNU aerodrome North-West of field - distance 6NM.
 (2) IAS > 250 kt. Bank 30°

APP Cagliari APP 119.275 (122.950)
 Cagliari Radar (122.950)
 TWR Elmas TWR 120.605 (122.100)
 ATIS Cagliari Arrival and departure info 127.055

AD ELEV 11

LIEE

CAGLIARI/ ELMAS
 VOR-X RWY 14



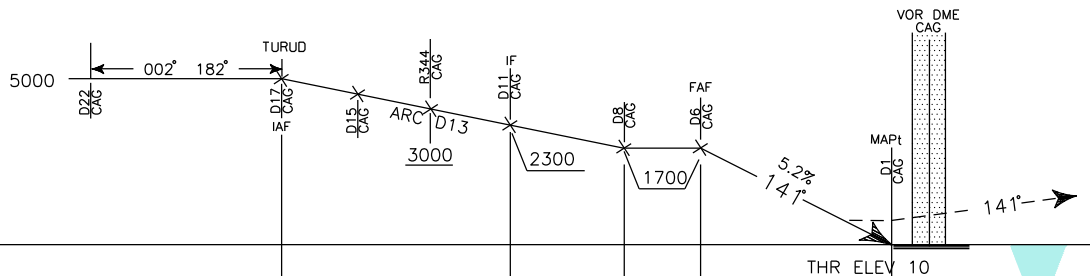
TRANSITION ALT 6000

M. A. : (TYPE A)

Proceed on track 141° (R141 CAG VOR) climbing to 5000 ft. At 10NM CAG DME turn left to intercept and follow R264 CAR VOR (TR 084) until joining CAR VOR holding pattern.

M. A. : (TYPE B)

Proceed on track 141° (R 141 CAG VOR) climbing to 4000 ft. At 10 NM CAG DME turn left to intercept and follow R 133 CAG VOR/DME bound to holding pattern.



STRAIGHT IN APPROACH		OCA (OCH)	A	B	C	D	CIRCLING SECTOR 	GS	FT MIN	DIST	ALT (HGT)	MNM SECT ALT CAG VOR
VOR		570 (560)						100	530	6 DME	1700 (1690)	
CIRCLING		1100 (1090)					120	630	5 DME	1380 (1370)		
							150	790	4 DME	1060 (1050)		
							180	950	3 DME	740 (730)		
							210	1110	2.5 DME	570 (560)		

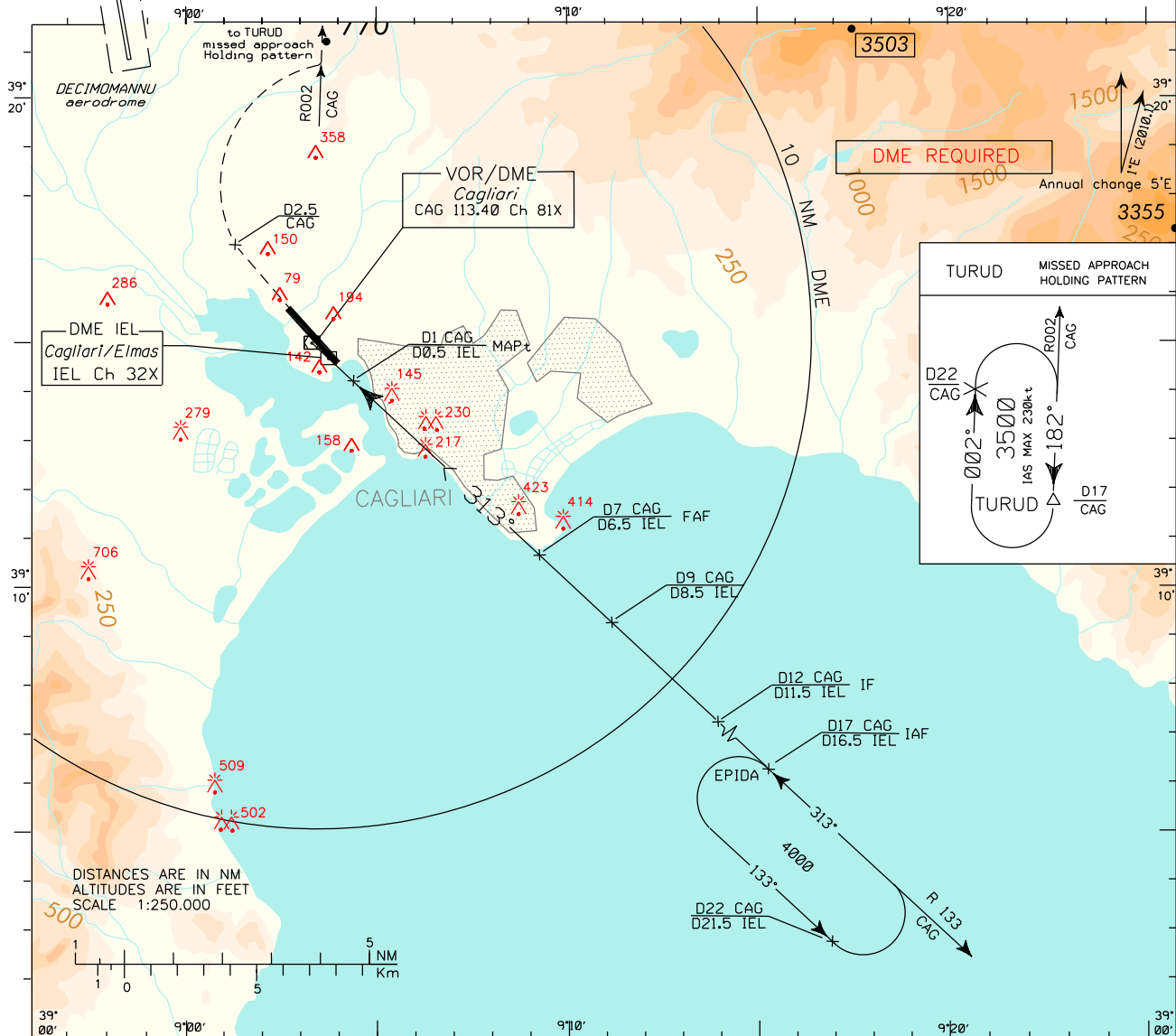
WARNING: Pilots shall pay attention to DECIMOMANNU aerodrome North-West of the field - distance 6 NM.

APP Cagliari APP (119.275) (122.950)
 Cagliari Radar (122.950)
 TWR Elmas TWR (120.605) (122.100)
 ATIS Cagliari Arrival and departure Info (127.055)

AD ELEV 11
 L I L E E

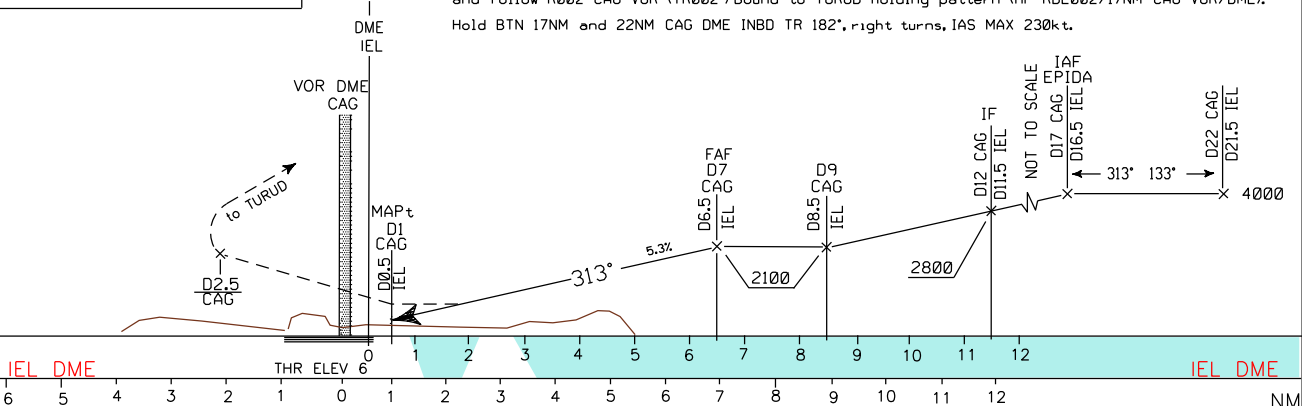
CAGLIARI/ ELMAS
 VOR X RWY32

DOC 8168 ED 6-2014



CHANGE: FREQ BOX UPDATED

TRANSITION ALT 6000 MISSED APPROACH: Proceed runway heading climbing to 3500ft. Passing 2.5 NM CAG DME turn right to join and follow R002 CAG VOR (TR002) Bound to TURUD holding pattern (HF RDL002/17NM CAG VOR/DME). Hold BTN 17NM and 22NM CAG DME INBD TR 182°, right turns, IAS MAX 230kt.



* STRAIGHT IN APPROACH	OCA (OCH)	A B C D				CIRCLING SECTOR	FT PER MIN	GS	DIST	ALT (HGT)	MNM	SECT	ALT
		800 (790)											
CIRCLING	1100 (1090)					NOT ALLOWED	480	90	6DME	1780 (1770)	6100	089	5700
		590	110	5DME	1460 (1450)								
		650	120	4DME	1130 (1120)								
		810	150	3DME	810 (800)								
						970	180	2.9DME	800 (790)				

ICAO - INSTRUMENT APPROACH CHART

AD 2 LIEE 5-19

WARNING: Pilots shall pay attention to DECIMOMANNU aerodrome NW of the field - distance 6 NM.

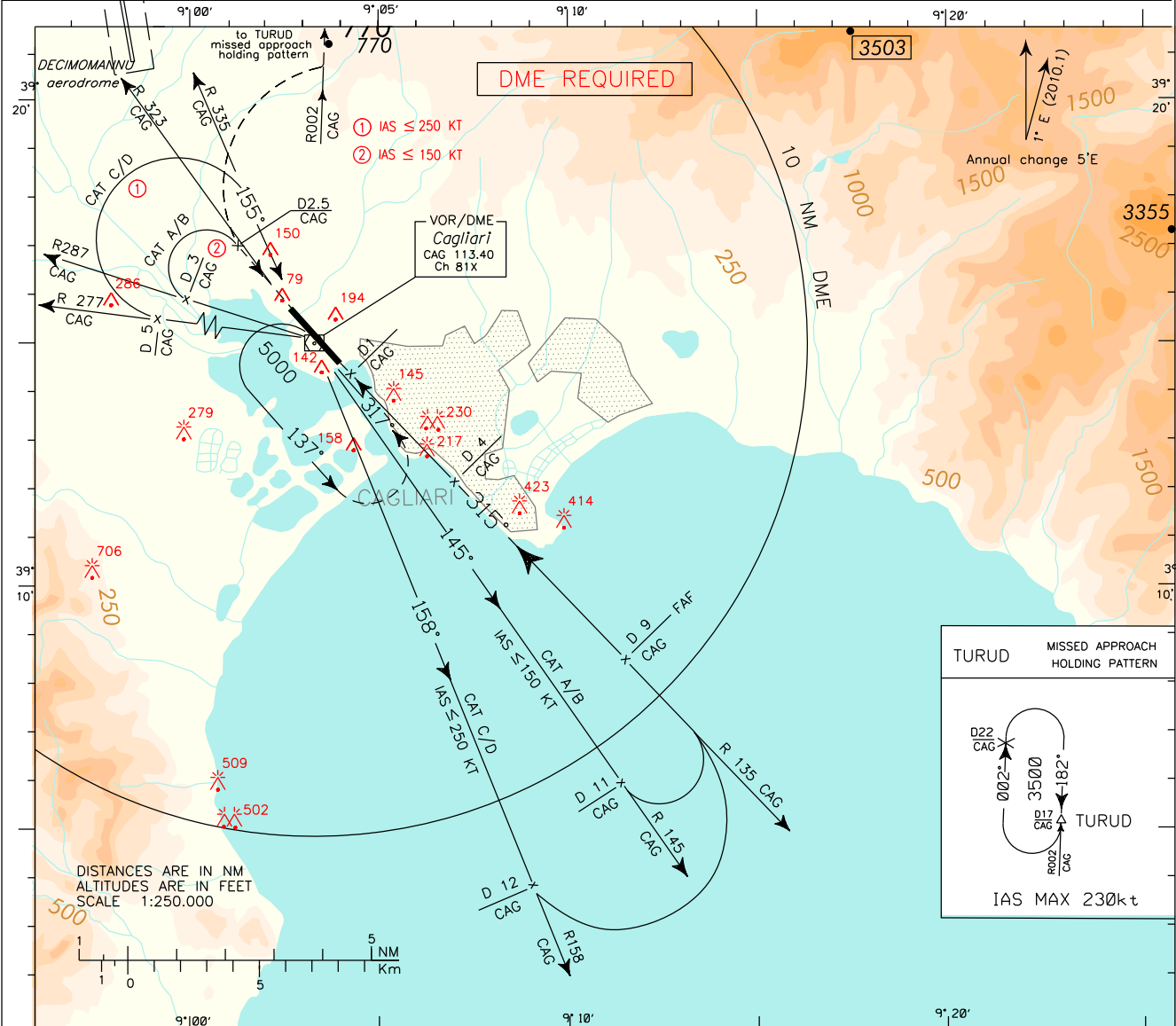
APP Cagliari APP (119.275)
 Cagliari Radar (122.950)
 TWR Elmas TWR (120.605)
 ATIS Cagliari Arrival and departure Info (122.100 / 127.055)

AD ELEV 11

CAGLIARI/ELMAS
VOR-Z RWY 32

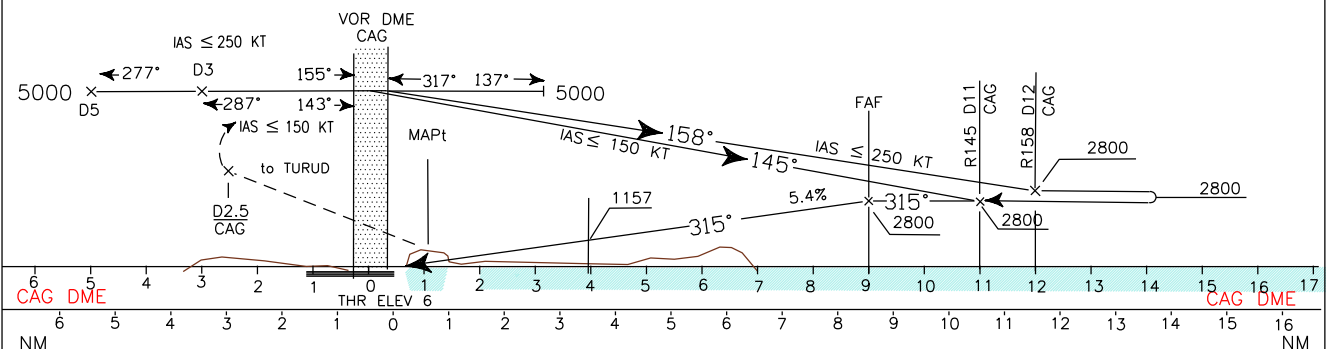
DOC 8168 ED 6-2014

CHANGE: FREQ BOX UPDATED



TRANSITION ALT 6000

MISSED APPROACH: Proceed runway heading climbing to 3500ft. Passing 2.5 NM CAG DME turn right to join and follow R002 CAG VOR (TR002°) Bound to TURUD holding pattern (HF RDL002/17NM CAG VOR/DME). Hold BTN 17NM and 22NM CAG DME INBD TR 182°, right turns, IAS MAX 230kt.



STRAIGHT IN APPROACH		CIRCLING				CIRCLING SECTOR 	GS			MNM CAG		SECT VOR DME	
VOR		1100 (1090)					FT MIN	DIST	ALT (HGT)	6100 5700		79	
VOR		800 (790)					80	8 DME	2470 (2460)				
							60	7 DME	2143 (2133)				
							90	6 DME	1814 (1804)				
							120	5 DME	1485 (1475)				
							150	4 DME	1157 (1147)				
CIRCLING		1100 (1090)				180	3 DME	828 (818)					
							2.9 DME	800 (790)					

ICAO – INSTRUMENT APPROACH CHART

AD 2 LIEE 5-21

WARNING: Pilots shall pay attention to DECIMOMANNU aerodrome North-West of the field – distance 6 NM.

APP Cagliari APP 119.275
(122.950)
Cagliari Radar (122.950)
TWR Elmas TWR 120.605
ATIS Cagliari Arrival and departure Info 122.100
127.055

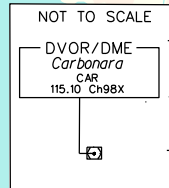
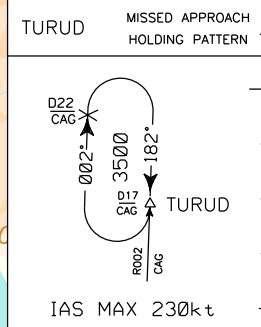
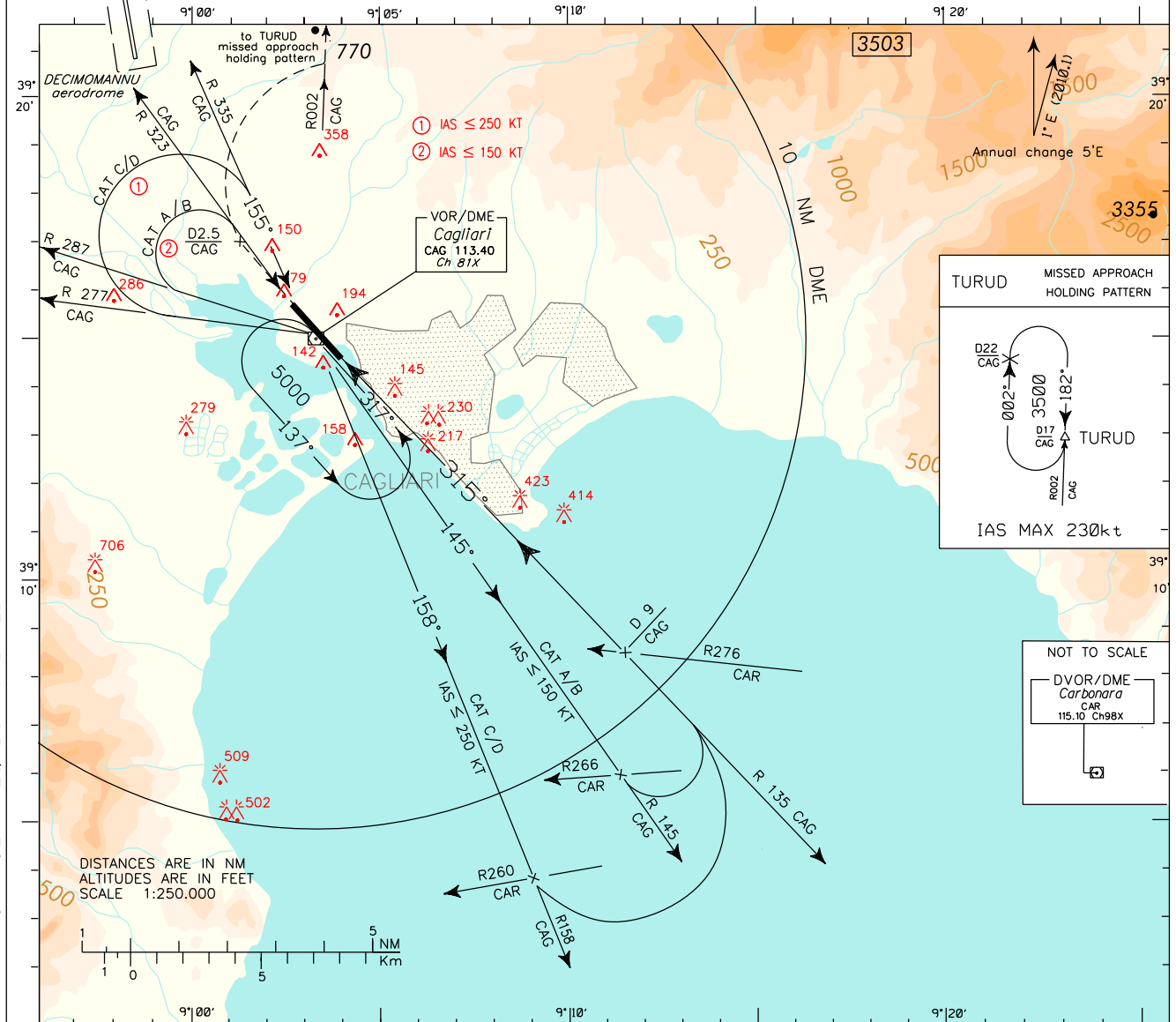
AD ELEV 11

LIEE

CAGLIARI/ ELMAS
VOR-Y RWY 32

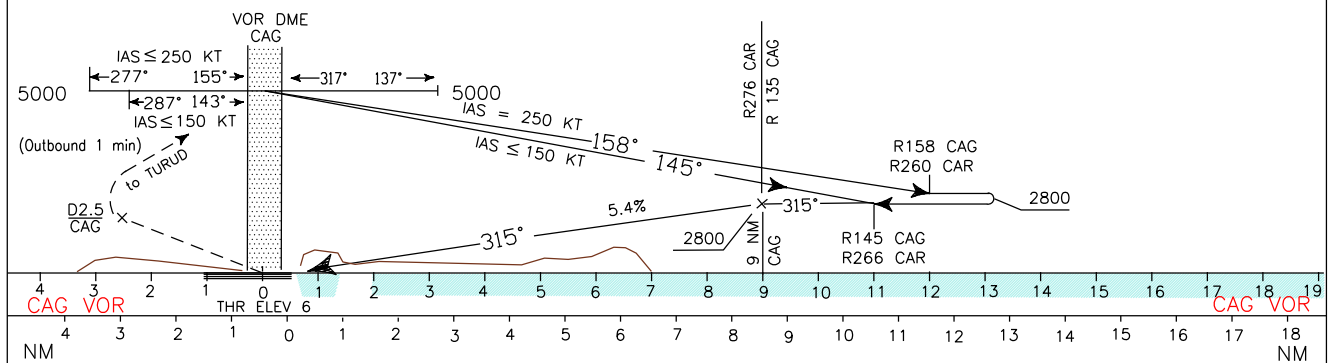
DOC 8168 ED 6-2014

CHANGE: FREQ BOX UPDATED



TRANSITION ALT 6000

MISSED APPROACH: Proceed runway heading climbing to 3500ft. Passing 2.5 NM CAG DME turn right to join and follow R002 CAG VOR (TR002°) Bound to TURUD holding pattern (HF RDL002/17NM CAG VOR/DME). Hold BTN 17NM and 22NM CAG DME INBD TR 182°, right turns, IAS MAX 230kt.



STRAIGHT IN APPROACH		OCA (OCH)	A	B	C	D	CIRCLING SECTOR 	GS	FT/MIN	FAF-MAPT	MNM CAG	SECT	ALT VOR
VOR			900 (890)						60	330	9 : 00		
CIRCLING			1100 (1090)					90	490	6 : 00			
								120	659	4 : 30			
								150	823	3 : 36			
								180	988	3 : 00			

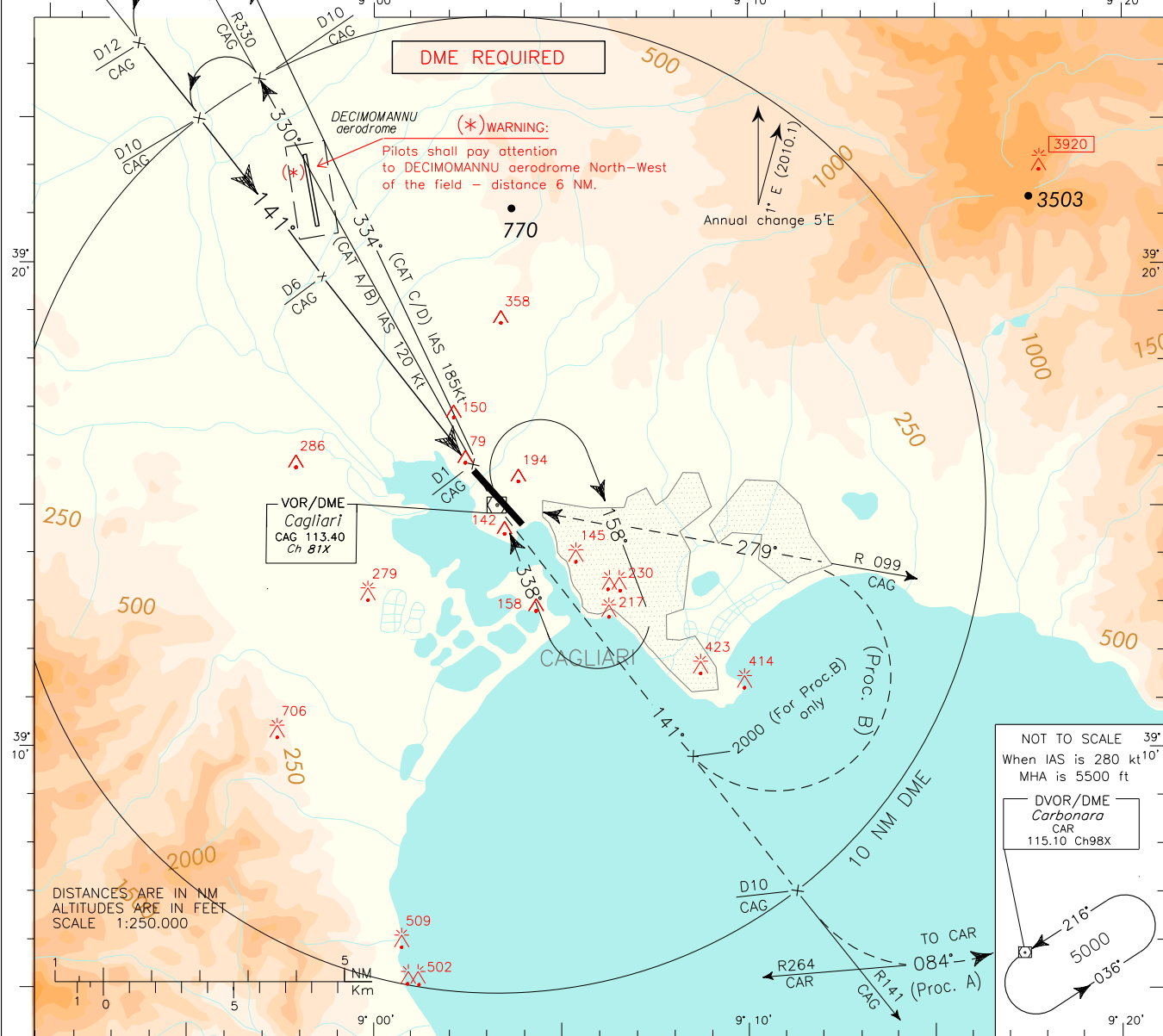
ICAO – INSTRUMENT APPROACH CHART

AD 2 LIEE 5-23

DOC 8168 ED 6-2014

CHANGE: FREQ BOX UPDATED

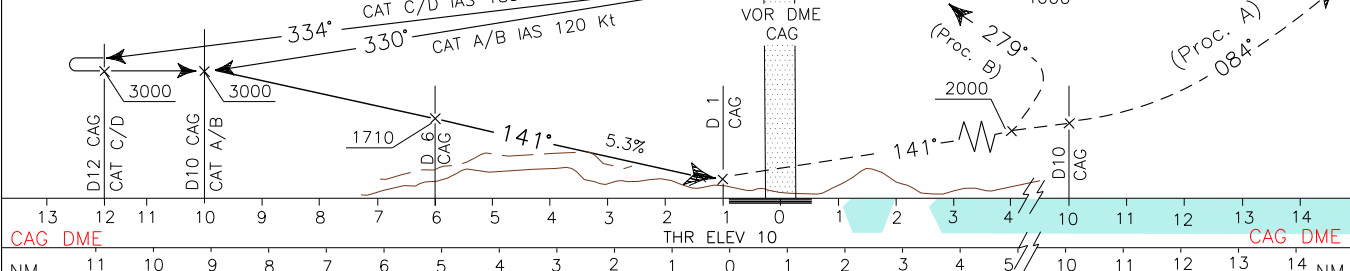
APP Cagliari APP	119.275 (122.950)	AD ELEV	LIEE	CAGLIARI/ELMAS VOR-Z RWY 14 (ATC DISCRETION)
Cagliari Radar	(122.950)	11		
TWR Elmas TWR	120.605			
ATIS Cagliari Arrival and departure Info	122.100 127.055			



TRANSITION ALT 6000

MISSED APPROACH: (PROC. A): Proceed on track 141° (R141 CAG VOR) climbing to 5000 ft. AT 10 NM CAG DME turn left to intercept and follow R264 CAR VOR(TR 084°) until joining CAR VOR holding pattern.
 - Turn IAS MAX 250 kt
 - MNM climb gradient 3.5%; or, if unable, follow TYPE B Procedure and advise ATC.

(PROC. B): At 1NM CAG DME climb to 4000 ft on track 141°. Leaving 2000 ft (not beyond 10 NM CAG DME) turn left on R 099 CAG VOR (TR279°) reaching CAG VORDME at 4000 ft.
 - Turn IAS MAX 250 kt.



CAG DME		NM										THR ELEV 10		CAG DME						
OCA (OCH)		A	B	C	D	CIRCLING SECTOR						GS	FT PER MIN	DIST	ALT (HGT)	MNM SECT ALT	CAG	VOR	DME	
STRAIGHT IN APPROACH	VOR	570 (560)										60	322	6 DME	1710 (1700)					
CIRCLING		1100 (1090)										120	644	4 DME	1070 (1060)					
												150	805	3 DME	750 (740)					
												180	966	2.5 DME	570 (560)					

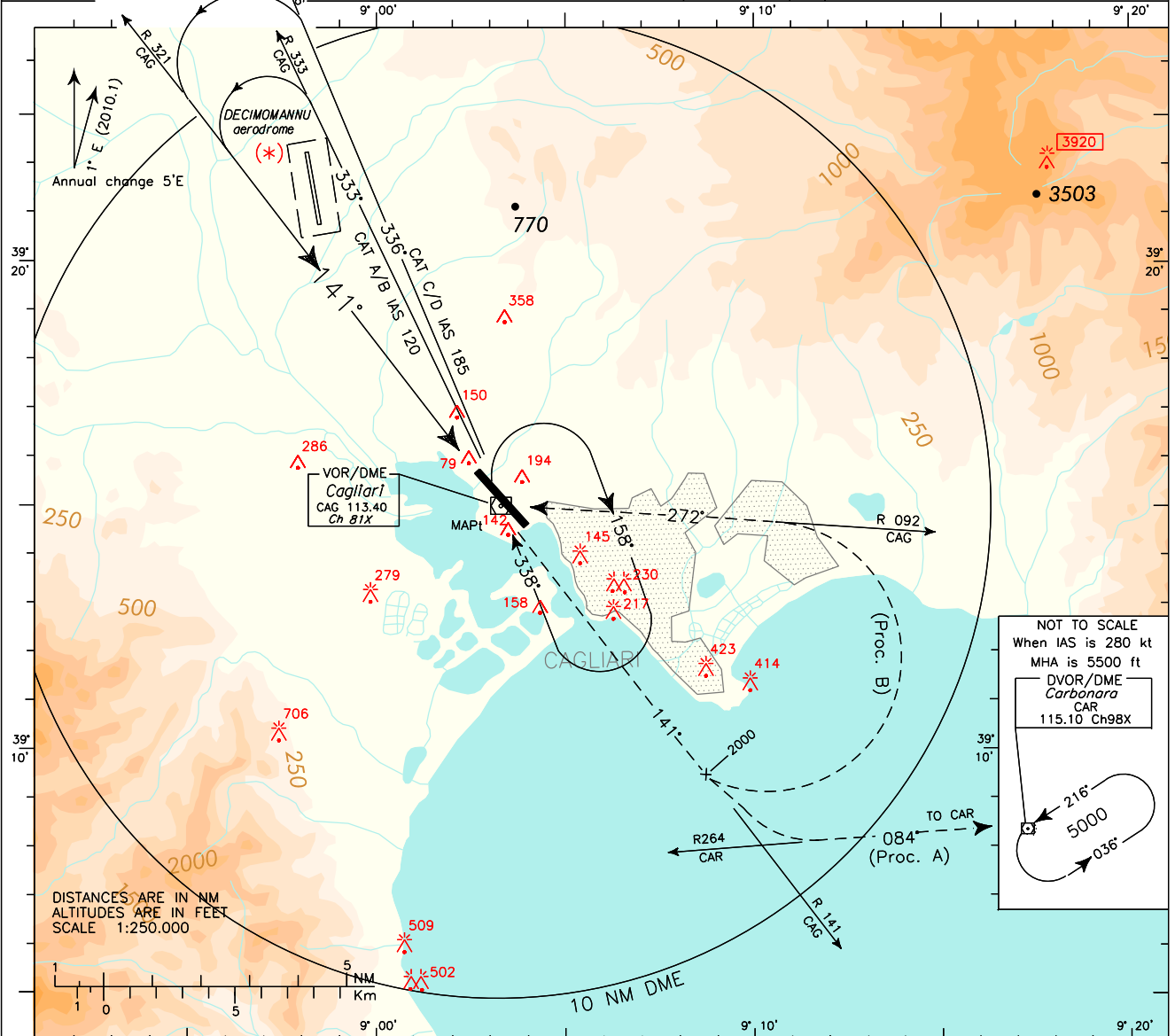
ICAO – INSTRUMENT APPROACH CHART

AD 2 LIEE 5-25

DOC 8168 ED 6-2014

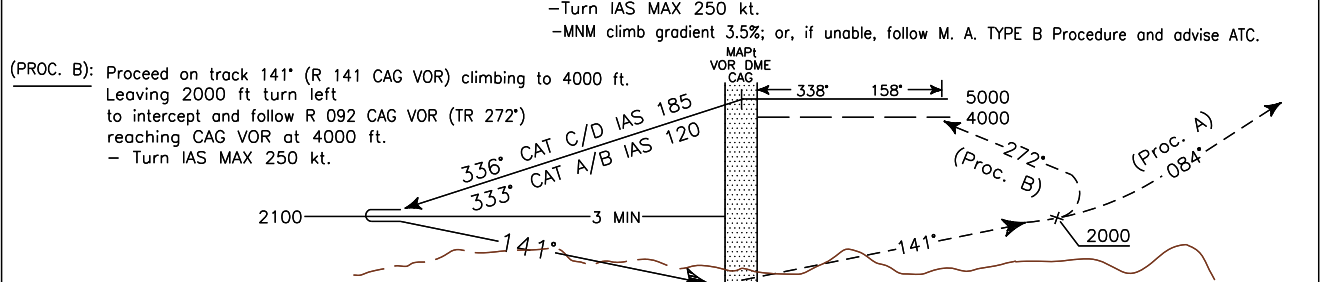
CHANGE: FREQ BOX UPDATED

<p>(*) WARNING: Pilots shall pay attention to DECIMOMANNU aerodrome North-West of the field – distance 6 NM.</p>	APP Cagliari APP	119.275 (122.950) (122.950)	AD ELEV	L I E E	CAGLIARI/ ELMAS VOR-Y RWY 14 (ATC DISCRETION)
	Cagliari Radar	120.605 122.100 127.055	11		
	TWR Elmas TWR				
	ATIS Cagliari Arrival and departure Info				



TRANSITION ALT 6000

MISSED APPROACH: (PROC. A): Proceed on track 141° (R141 CAG VOR) climbing to 5000 ft. Leaving 2000 ft turn left to intercept and follow R264 CAR VOR (TR 084°) until joining CAR VOR holding pattern.
- Turn IAS MAX 250 kt.
- MNM climb gradient 3.5%; or, if unable, follow M. A. TYPE B Procedure and advise ATC.



NM	11	10	9	8	7	6	5	4	3	2	1	0	1	2	3	4	5	6	7	8	9	10	NM
----	----	----	---	---	---	---	---	---	---	---	---	---	---	---	---	---	---	---	---	---	---	----	----

OCA (OCH)		A	B	C	D	CIRCLING SECTOR 	MNM SECT ALT
STRAIGHT IN APPROACH	VOR	930 (920)					
	CIRCLING	1100 (1090)					

ICAO – INSTRUMENT APPROACH CHART

AD 2 LIEE 5-27

(*) WARNING: Pilots shall pay attention to "DECIMOMANNU" aerodrome North-West of the field – distance 6 NM.

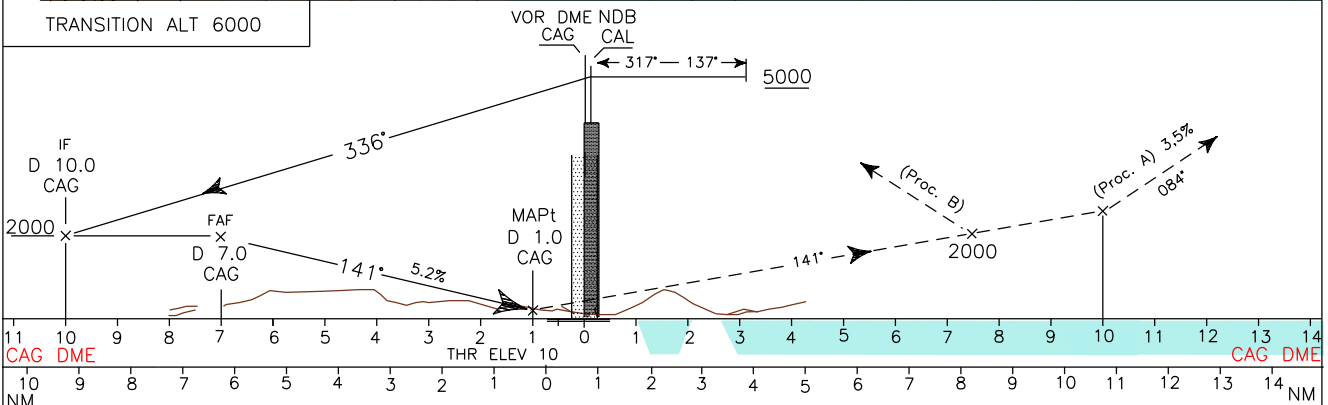
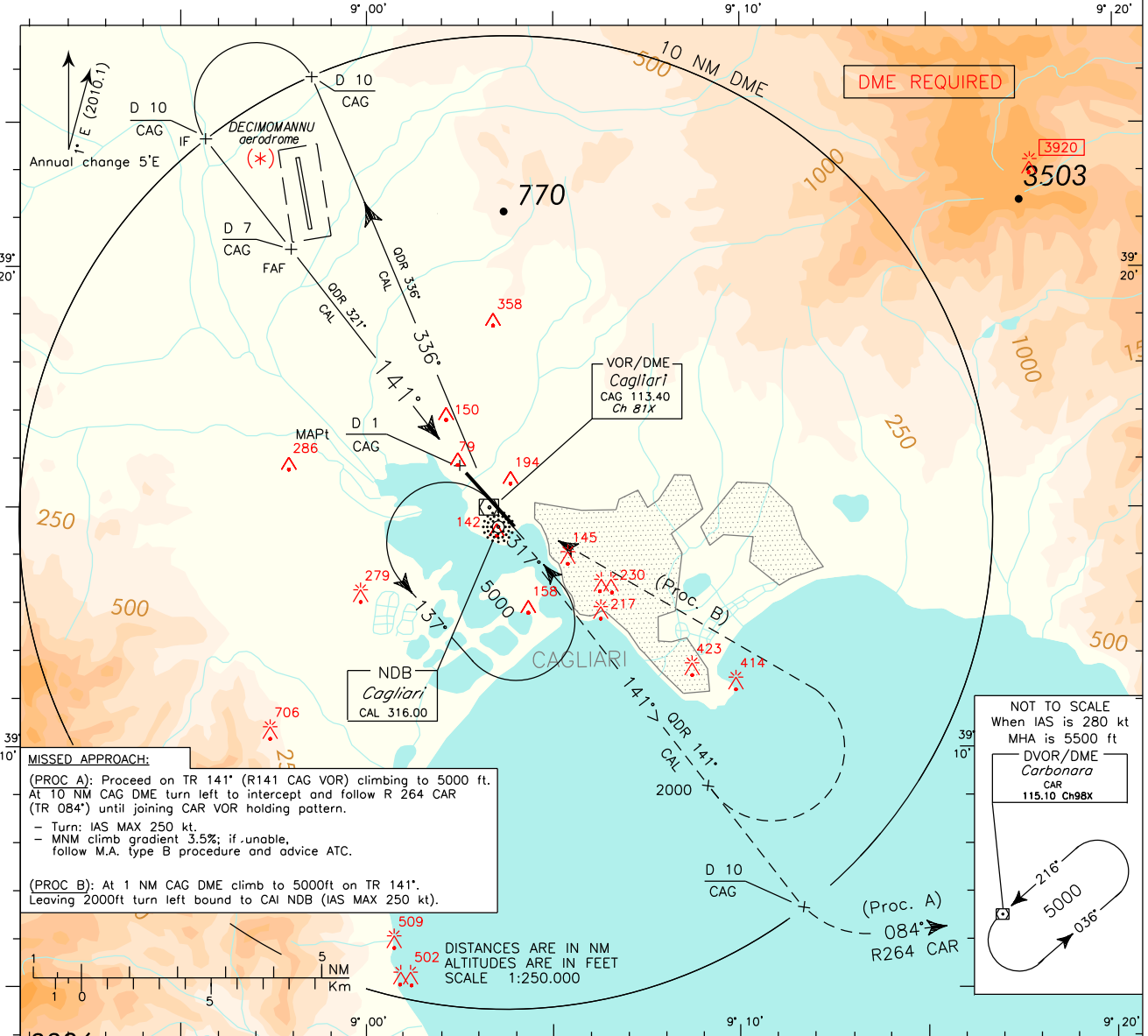
APP Cagliari APP 119.275 (122.950)
 Cagliari Radar (122.950)
 TWR Elmas TWR 120.605 (122.100)
 ATIS Cagliari Arrival and departure Info 127.055

AD ELEV 11
 LIEE

CAGLIARI/ELMAS
 NDB RWY 14

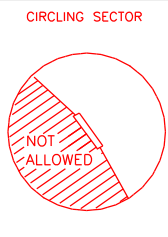
DOC 8168 ED 6-2014

CHANGE: FREQ BOX UPDATED

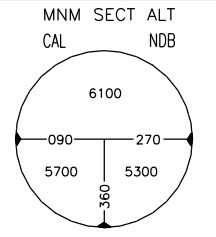


*

OCA (OCH)		A	B	C	D
STRAIGHT IN APPROACH	NDB	570 (560)			
	CIRCLING	1100 (1090)			



FT PER MIN	GS	DIST		ALT (HGT)	
		5 NM	7 DME	2000 (1990)	
320	60	3 : 45	6 DME	1690 (1680)	
480	90	2 : 59	5 DME	1370 (1360)	
640	120	2 : 30	4 DME	1050 (1040)	
800	150	2 : 08	3 DME	740 (730)	
960	180	1 : 52	2.5 DME	570 (560)	



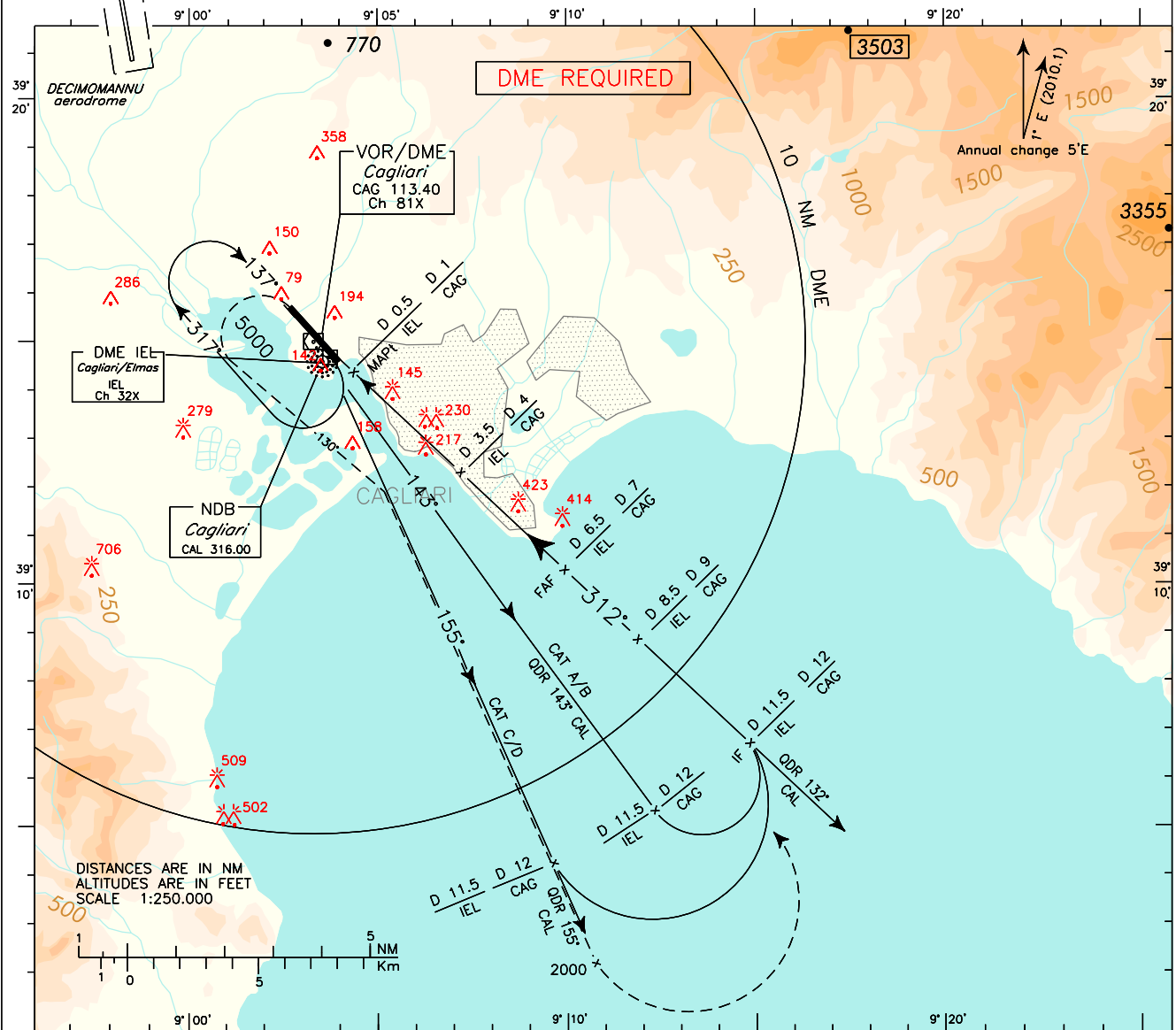
ICAO - INSTRUMENT APPROACH CHART

AD 2 LIEE 5-29

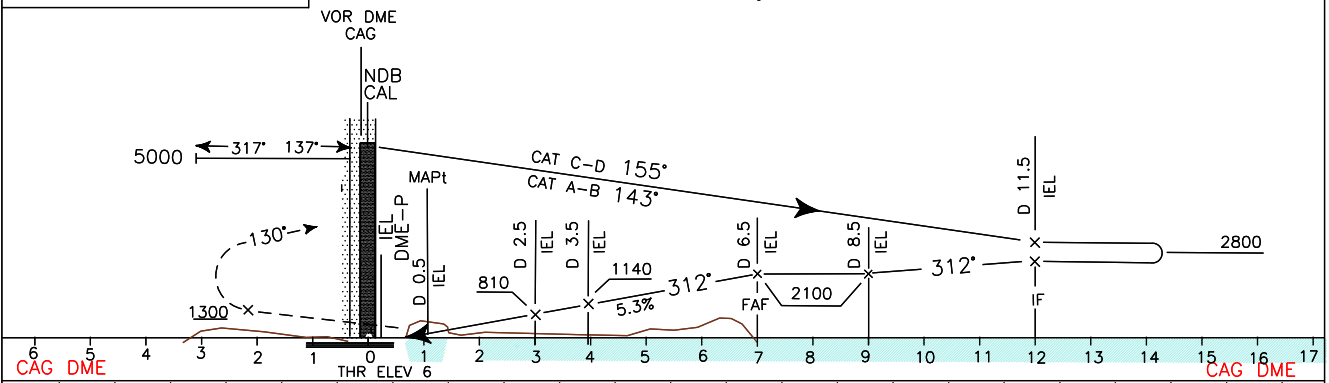
<p>WARNING: Pilots shall pay attention to DECIMOMANNU aerodrome North-West of the field - distance 6 NM.</p>	APP Cagliari APP	119.275 (122.950)	AD ELEV	L E	CAGLIARI/ELMAS
	Cagliari Radar	(122.950)			
	TWR Elmas TWR	120.605 122.100			
	ATIS Cagliari Arrival and departure Info	127.055			
		11			NDB RWY 32

DOC 8168 ED 6-2014

CHANGE: FREQ BOX UPDATED

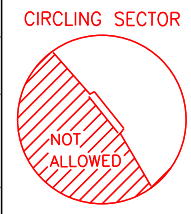


TRANSITION ALT 6000 MISSED APPROACH: Continue on final track climbing to 5000ft. Passing 1300ft turn left (IAS MAX 170 KT) TR 130° to intercept and follow QDR 155° CAL. Crossing 2000ft, turn left bound to CAL NDB.

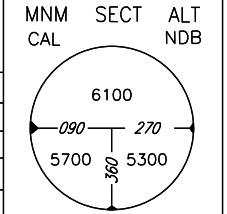


CAG DME 6 5 4 3 2 1 0 1 2 3 4 5 6 7 8 9 10 11 12 13 14 15 16 17 NM

OCA (OCH)		A	B	C	D
STRAIGHT IN APPROACH	NDB	800 (790)			
CIRCLING		1100 (1090)			

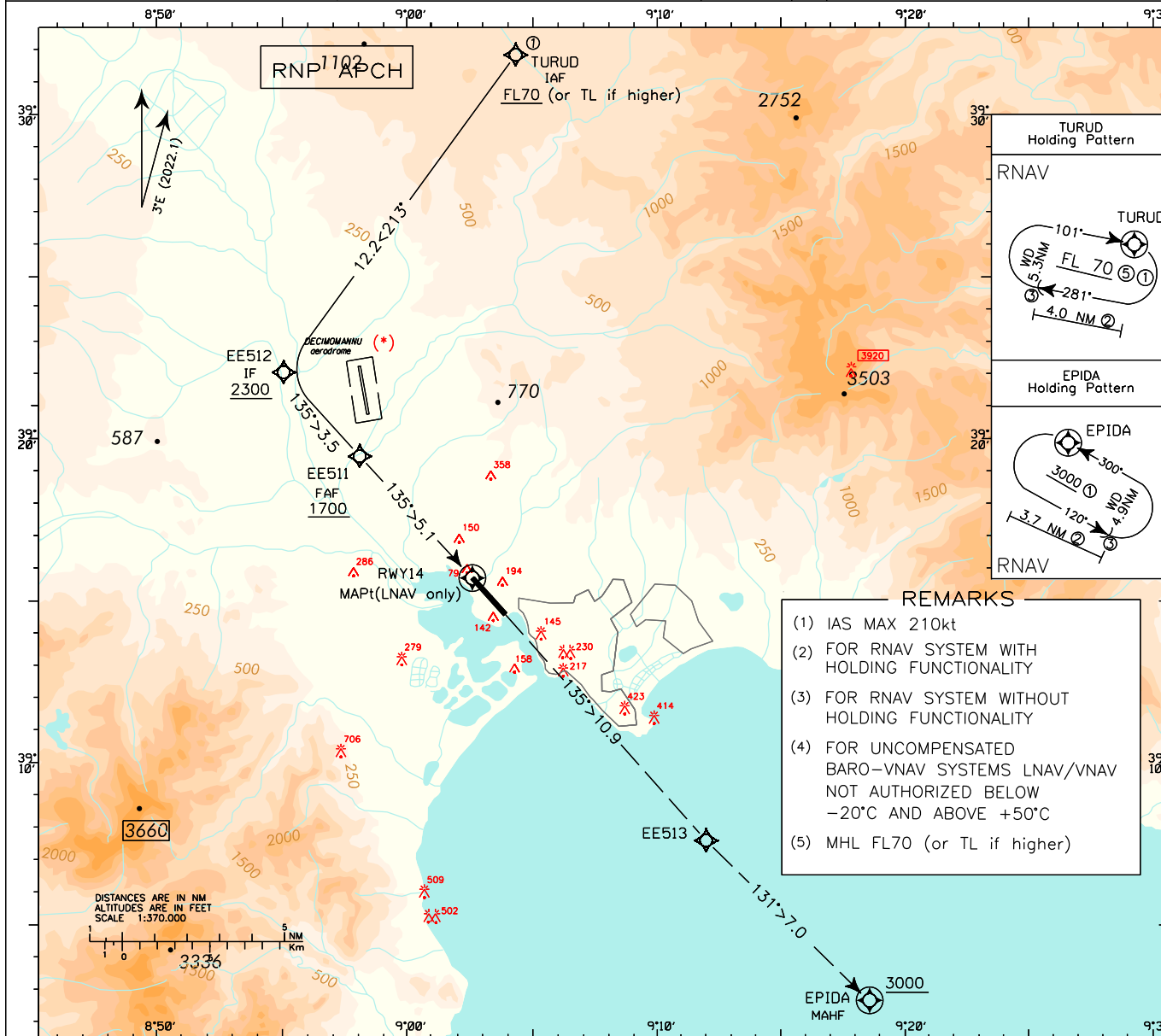


GS	FT MIN	DIST	ALT (HGT)
60	320	7 DME	2100 (2090)
90	485	6 DME	1780 (1770)
120	650	5 DME	1460 (1450)
150	810	4 DME	1140 (1130)
180	970	3 DME	810 (800)



DOC 8168 ED 7-2020

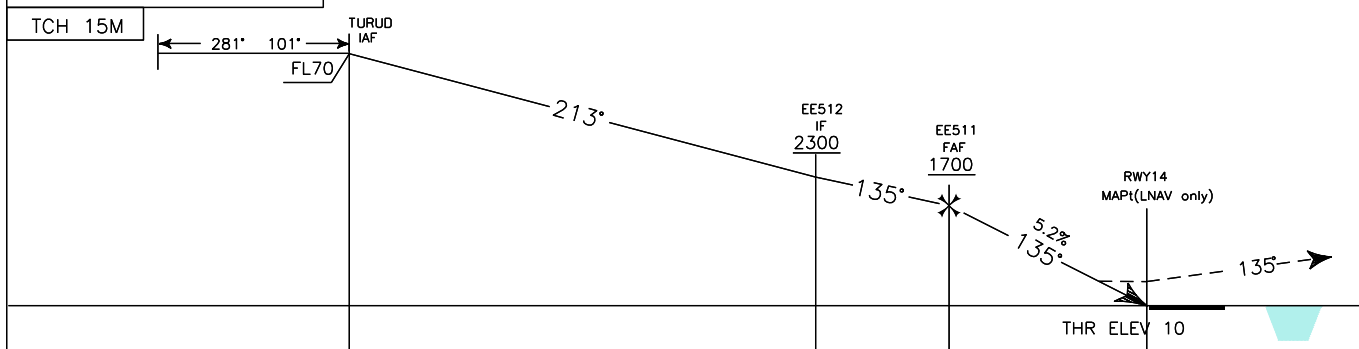
WARNING	APP Cagliari APP Cagliari Radar	119.275 (122.950)	AD ELEV	L I E E	CAGLIARI/ ELMAS
(*) Pilots shall be aware of mil jet traffic at DECIMOMANNU aerodrome located NORTH-WEST of the field distance 6NM.	TWR Elmas TWR	120.605	11		RNP RWY 14
	ATIS Cagliari Arrival and departure Info	122.100 127.055			



- REMARKS**
- (1) IAS MAX 210kt
 - (2) FOR RNAV SYSTEM WITH HOLDING FUNCTIONALITY
 - (3) FOR RNAV SYSTEM WITHOUT HOLDING FUNCTIONALITY
 - (4) FOR UNCOMPENSATED BARO-VNAV SYSTEMS LNAV/VNAV NOT AUTHORIZED BELOW -20°C AND ABOVE +50°C
 - (5) MHL FL70 (or TL if higher)

CHANGE: NEW PROCEDURE

TRANSITION ALT 6000 M. A.: Proceed on final track climbing to 3000 ft. Track 135° to EE513 then track 131° to EPIDA holding pattern.



29 28 27 26 25 24 23 22 21 20 19 18 17 16 15 14 13 12 11 10 9 8 7 6 5 4 3 2 1 0 1 2 3 4 5					NM						
OCA (OCH)		A	B	C	D	CIRCLING SECTOR 	GS	FT MIN	DIST	ALT (HGT)	MNM SECT ALT
LNAV/VNAV④		320 (310)	330 (320)	340 (330)	350 (340)		80	420	RWY14		25NM
LNAV		470 (460)					100	530	5.1	1700 (1690)	6000 ⊕
CIRCLING		1100 (1090)					120	640	4.0	1334 (1324)	
						140	740	3.0	1016 (1006)		
						160	850	2.0	697 (687)		
						180	960	1.3	470 (460)		

IAC RNP APCH RWY 14 LIEE

Path Terminator	Waypoint Identifier	Fly Over	Course °M(°T)	Magnetic Variation	Distance (NM)	Turn Direction	Altitude (ft)	Speed Limit (Kt)	VPA/TCH	Navigation Specification	Remarks
IF	TURUD	-	-	-	-	-	+FL70	210	-	RNAV 1	-
TF	EE512	-	213° (216.2°)	-	12.2	-	+2300	-	-	RNP APCH	-
TF	EE511	-	135° (137.9°)	-	3.5	-	+1700	-	-	RNP APCH	-
TF	THR RWY 14	Y	135° (137.9°)	-	5.1	-	@60.00 (3)	-	-3°/ 15M	RNP APCH	MAPt (LNAV only)
TF	EE513	-	135° (138.0°)	-	10.9	-	-	-	-	RNP APCH	-
TF	EPIDA	Y	131° (134.3°)	-	7.0	-	+3000	-	-	RNP APCH	-

MISSED APPROACH DESCRIPTION

Proceed on final track climbing to 3000 ft. Track 135° to EE513 then track 131° to EPIDA holding pattern.

IAF (TURUD) HOLDING PATTERN RWY 14

Path Terminator	Waypoint Identifier	Inbound Track °M(°T)	Turn Direction	Altitude Constraint	Speed Limit KIAS	D (NM)(1)	WD (NM)(2)	TYPE
HM	TURUD	101°(103.9°)	R	+FL70	210	4.0	5.3	RNAV1

MAHF EPIDA HOLDING PATTERN RWY 14

Path Terminator	Waypoint Identifier	Inbound Track °M(°T)	Turn Direction	Altitude Constraint	Speed Limit KIAS	D (NM)(1)	WD (NM)(2)	TYPE
HM	EPIDA	300°(302.9°)	L	+3000	210	3.7	4.9	RNAV1

(1): For RNAV system with holding functionality.

(2): For RNAV system without holding functionality.

(3): THR Altitude plus TCH; for MA Transition the value is according to the minima LNAV or LNAV/VNAV.

Waypoint Table Formatted according ARINC 424 standards RNP APCH RWY 14

WAYPOINT	LATITUDE	LONGITUDE
EPIDA	N39024000	E009182400
TURUD	N39315500	E009042400
EE511	N39192865	E008580971
EE512	N39220460	E008550824
EE513	N39073412	E009115711

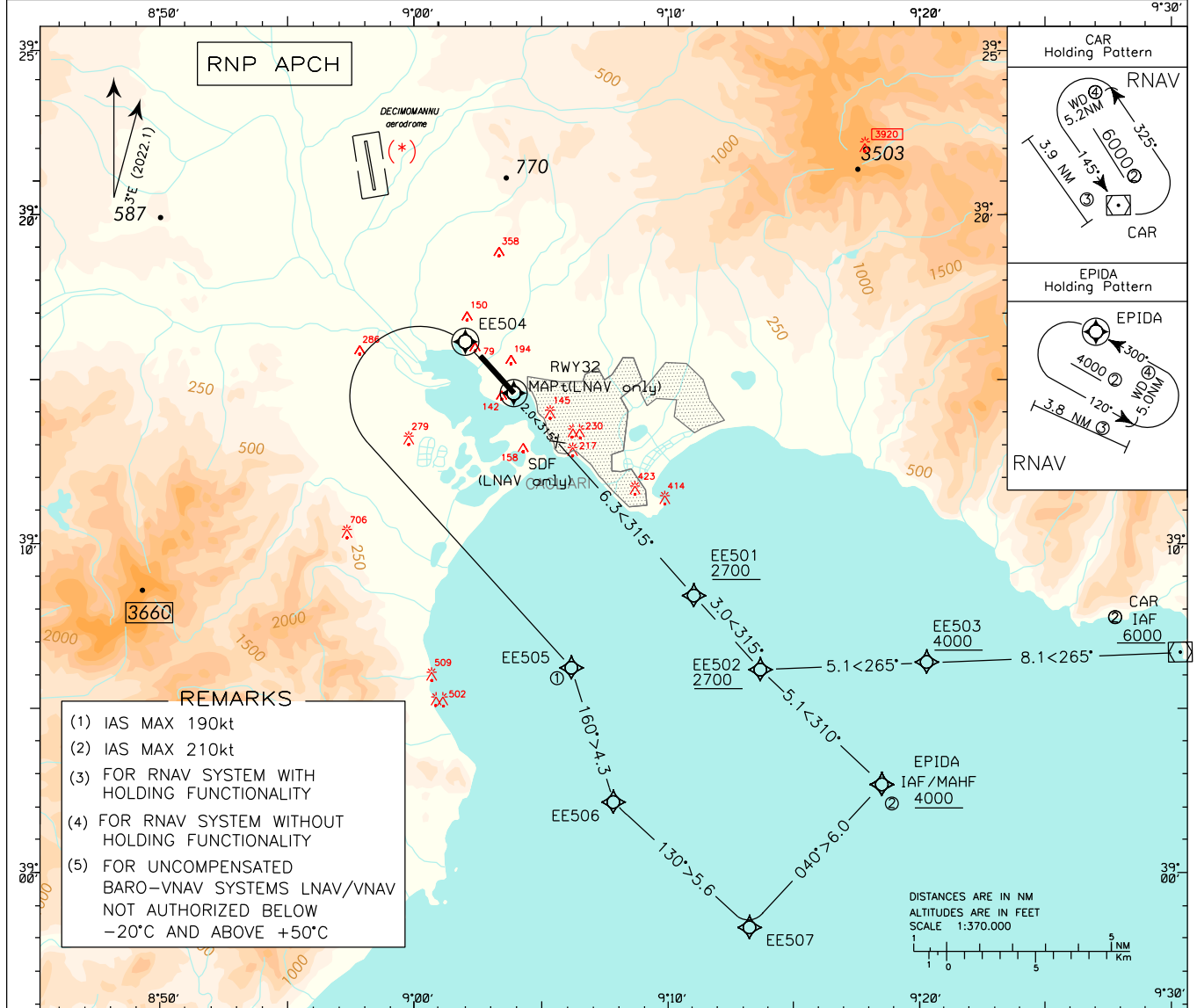
ICAO – INSTRUMENT APPROACH CHART

AD 2 LIEE 5-33

DOC 8168 ED 7-2020

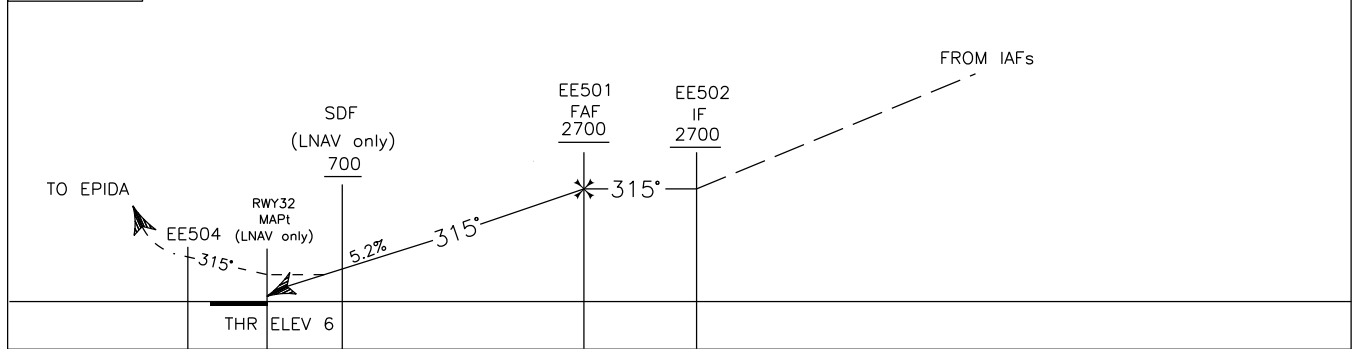
CHANGE: NEW PROCEDURE

WARNING	APP Cagliari APP Cagliari Radar	119.275 (122.950)	AD ELEV	L I E E	CAGLIARI/ ELMAS RNP RWY 32
(*) Pilots shall be aware of mil jet traffic at DECIMOMANNU aerodrome located NORTH-WEST of the field distance 6NM.	TWR Elmas TWR ATIS Cagliari Arrival and departure Info	120.605 122.100 127.055	11		



TRANSITION ALT 6000 M. A. : Proceed on final track (TR 315°) climbing to 4000 ft. At EE504 turn left (IAS MAX 190 Kts) direct to EE505, track 160° to EE506, track 130° to EE507 then turn left track 040° to EPIDA holding pattern.

TCH 17.5M



					FROM IAFs									
					SDF (LNAV only) 700	EE501 FAF 2700	EE502 IF 2700							
					EE504 (LNAV only)	315°								
					THR ELEV 6									
6 5 4 3 2 1 0 1 2 3 4 5 6 7 8 9 10 11 12 13 14 15 16 17 18 19 20 21 22 23 24 25 26 27 28					NM									
OCA (OCH)		A	B	C	D	CIRCLING SECTOR		GS	FT	DIST	RWY32	ALT (HGT)	MNM SECT ALT	
STRAIGHT IN APPROACH	MISSED APPROACH	LNAV/VNAV	370(364)	380 (374)	500 (494)	530 (524)	<div style="border: 2px solid red; border-radius: 50%; width: 40px; height: 40px; display: flex; align-items: center; justify-content: center;"> <div style="border-left: 2px solid red; border-right: 2px solid red; width: 100%; height: 100%;"></div> </div> <p style="text-align: center; color: red; font-weight: bold; font-size: x-small;">NOT ALLOWED</p>	80	420	8.3	2700 (2694)	<div style="border: 1px solid black; border-radius: 50%; width: 60px; height: 60px; display: flex; align-items: center; justify-content: center;"> <div style="border: 1px solid black; border-radius: 50%; width: 20px; height: 20px; display: flex; align-items: center; justify-content: center;"> 6000 </div> </div>		
		LNAV						610 (600)	100	530	7.0			2293 (2287)
	LNAV/VNAV	370(364)	380 (374)	390 (384)	400 (394)	610 (600)		120	640	6.0	1975 (1969)			
	LNAV					460 (450)		140	740	5.0	1656 (1650)			
CIRCLING						1100 (1090)	160	850	4.0	1338 (1332)				
						180	960	1.7	610 (604)					

IAC RNP APCH RWY 32 LIEE – VIA CAR

Path Terminator	Waypoint Identifier	Fly Over	Course °M(°T)	Magnetic Variation	Distance (NM)	Turn Direction	Altitude (ft)	Speed Limit (Kt)	VPA/TCH	Navigation Specification	Remarks
IF	CAR	-	-	-	-	-	+6000	210	-	RNAV 1	-
TF	EE503	-	265° (267.7°)	-	8.1	-	+4000	-	-	RNP APCH	-
TF	EE502	-	265° (267.6°)	-	5.1	-	+2700	-	-	RNP APCH	-
TF	EE501	-	315° (318.1°)	-	3.0	-	+2700	-	-	RNP APCH	-
-	-	-	315° (318.1°)	-	6.3	-	+700	-	-	RNP APCH	SDF (LNAV only)
TF	THR RWY 32	Y	315° (318.0°)	-	2.0	-	@63.41 (3)	-	-3%/17.5M	RNP APCH	MAPt (LNAV only)
CF	EE504	Y	315° (318.0°)	3	2.1	-	-	-	-	RNP APCH	-
DF	EE505	-	-	-	-	L	-	190	-	RNP APCH	-
TF	EE506	-	160° (162.8°)	-	4.3	-	-	-	-	RNP APCH	-
TF	EE507	-	130° (132.8°)	-	5.6	-	-	-	-	RNP APCH	-
TF	EPIDA	Y	040° (042.8°)	-	6.0	L	+4000	210	-	RNP APCH	-

MISSED APPROACH DESCRIPTION

Proceed on final track (TR 315°) climbing to 4000 ft. At EE504 turn left (IAS MAX 190 Kts) direct to EE505, track 160° to EE506, track 130° to EE507 then turn left track 040° to EPIDA holding pattern.

IAF (CAR) HOLDING PATTERN RWY 32

Path Terminator	Waypoint Identifier	Inbound Track °M(°T)	Turn Direction	Altitude Constraint	Speed Limit KIAS	D (NM)(1)	WD (NM)(2)	TYPE
HM	CAR	145°(147.7°)	L	+6000	210	3.9	5.2	RNAV1

MAHF EPIDA HOLDING PATTERN RWY 32

Path Terminator	Waypoint Identifier	Inbound Track °M(°T)	Turn Direction	Altitude Constraint	Speed Limit KIAS	D (NM)(1)	WD (NM)(2)	TYPE
HM	EPIDA	300°(302.9°)	L	+4000	210	3.8	5.0	RNAV1

(1): For RNAV system with holding functionality.

(2): For RNAV system without holding functionality.

(3): THR Altitude plus TCH; for MA Transition the value is according to the minima LNAV or LNAV/VNAV.

IAP RNP APCH RWY 32 LIEE – VIA EPIDA

Path Terminator	Waypoint Identifier	Fly Over	Course °M(°T)	Magnetic Variation	Distance (NM)	Turn Direction	Altitude (ft)	Speed Limit (Kt)	VPA/TCH	Navigation Specification	Remarks
IF	EPIDA	-	-	-	-	-	+4000	210	-	RNAV 1	-
TF	EE502	-	310° (312.9°)	-	5.1	-	+2700	-	-	RNP APCH	-
TF	EE501	-	315° (318.1°)	-	3.0	-	+2700	-	-	RNP APCH	-
-	-	-	315° (318.1°)	-	6.3	-	+700	-	-	RNP APCH	SDF (LNAV only)
TF	THR RWY 32	Y	315° (318.0°)	-	2.0	-	@63.41 (3)	-	-3°/17.5M	RNP APCH	MAPt (LNAV only)
CF	EE504	Y	315° (318.0°)	3	2.1	-	-	-	-	RNP APCH	-
DF	EE505	-	-	-	-	L	-	190	-	RNP APCH	-
TF	EE506	-	160° (162.8°)	-	4.3	-	-	-	-	RNP APCH	-
TF	EE507	-	130° (132.8°)	-	5.6	-	-	-	-	RNP APCH	-
TF	EPIDA	Y	040° (042.8°)	-	6.0	L	+4000	210	-	RNP APCH	-

MISSED APPROACH DESCRIPTION

Proceed on final track (TR 315°) climbing to 4000 ft. At EE504 turn left (IAS MAX 190 Kts) direct to EE505, track 160° to EE506, track 130° to EE507 then turn left track 040° to EPIDA holding pattern.

IAF/MAHF EPIDA HOLDING PATTERN RWY 32

Path Terminator	Waypoint Identifier	Inbound Track °M(°T)	Turn Direction	Altitude Constraint	Speed Limit KIAS	D (NM)(1)	WD (NM)(2)	TYPE
HM	EPIDA	300°(302.9°)	L	+4000	210	3.8	5.0	RNAV1

(1): For RNAV system with holding functionality.

(2): For RNAV system without holding functionality.

(3): THR Altitude plus TCH; for MA Transition the value is according to the minima LNAV or LNAV/VNAV

Waypoint Table Formatted according ARINC 424 standards RNP APCH RWY 32 LIEE

WAYPOINT	LATITUDE	LONGITUDE
CAR	N39064100	E009302900
EPIDA	N39024000	E009182400
EE501	N39082188	E009110202
EE502	N39060785	E009133657
EE503	N39062094	E009200845
EE504	N39160515	E009020602
EE505	N39061232	E009061326
EE506	N39020596	E009075134
EE507	N38581572	E009131005

Intenzionalmente bianca

Intentionally left blank