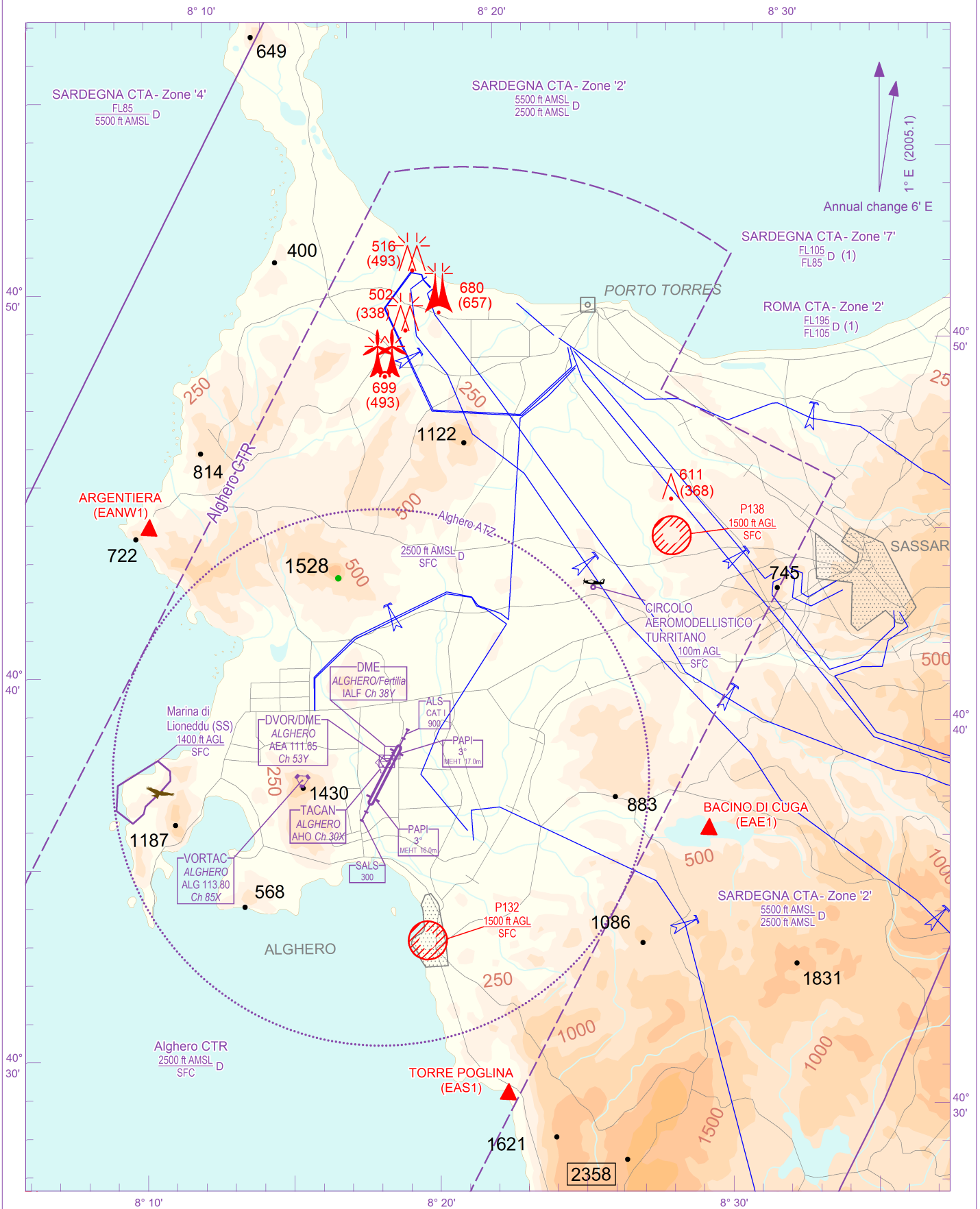


<p>SCALE 1:250.000</p>	<p>FIS Roma Information 125.750 / 134.125 APP Roma Radar 125.950 (127.125) TWR Alghero TWR 118.850 ATIS Alghero terminal information 125.025</p>	<p>AD ELEV 87</p>	<p>L I E A</p>	<h2 style="margin: 0;">ALGHERO/FERTILIA</h2>
------------------------	---	-----------------------	----------------------------	--

CHANGE: NEW SALS RWY 02 AND UPDATED CHART



<p>AIRSPACE CLASSIFICATION See AIP ENR 1.4</p> <p>TRANSITION ALT 6000 FT</p> <p>ELEV AND ALT IN FT</p>	<p>REMARK (1) Entire chart is included in Sardegna CTA Zone 7 and Roma CTA Zone 2</p>	<p>WARNING</p>
---	--	-----------------------

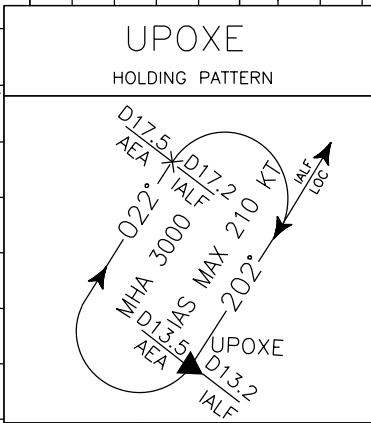
DOC 8168 ED 6 – 2014 AMDT 7
CHANGE: DME READING ON UPOXE HOLDING PATTERN UPDATED

WARNING: During $HN \pm 30$ min circling and landing for RWY 02 is forbidden.

APP Roma Radar 125.950 (127.125)
TWR Alghero TWR 118.850
ATIS Alghero terminal information 125.025

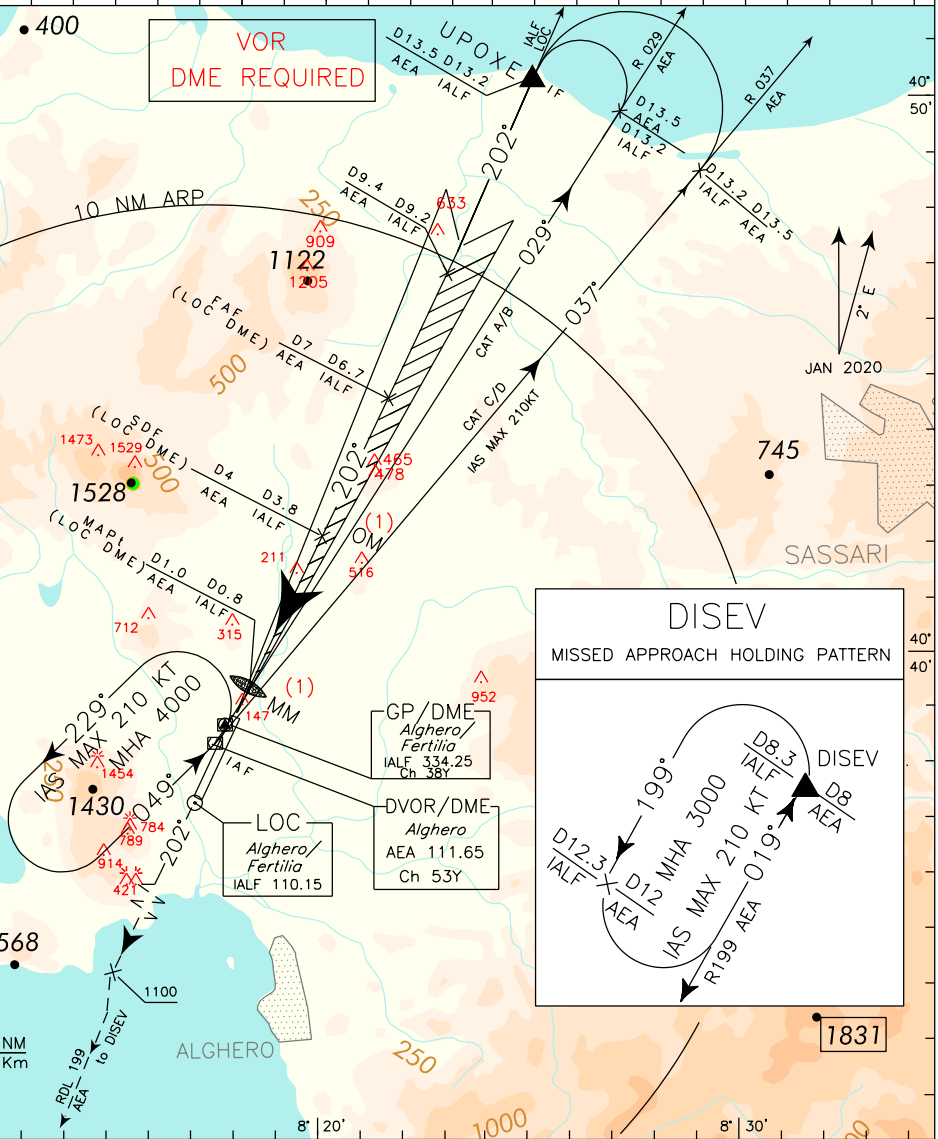
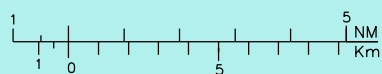
AD ELEV 87
LIEA

ALGHERO/FERTILIA
ILS RWY 20



REMARK:
(1) OM replaced by 3.8 NM IALF DME – 1280 ft
During MM failure: MM replaced by 0.8 NM IALF DME – 332 ft
(2) 4000ft ATC discretion

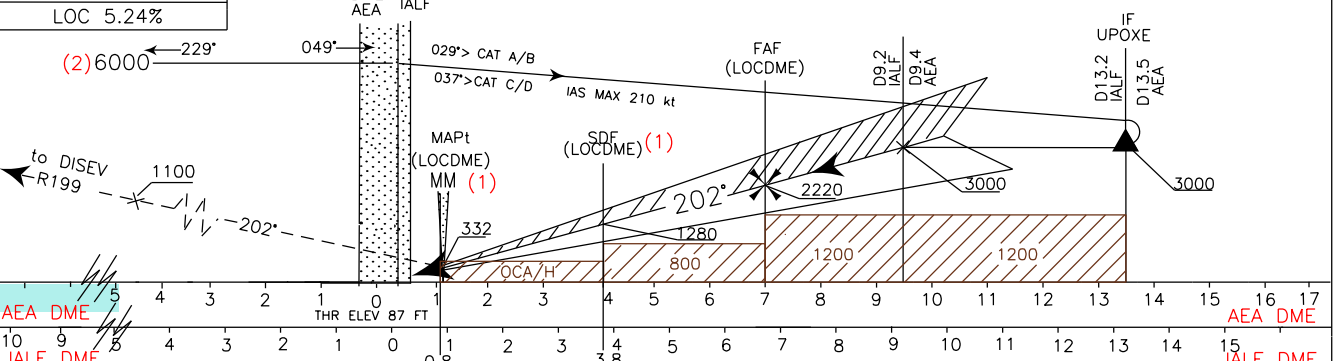
DISTANCES ARE IN NM
ALTITUDES ARE IN FEET
SCALE 1:250.000



RDH 17 M
GP 3°
LOC 5.24%

MISSED APPROACH: Proceed on TR 202° climbing to 3000 ft. Passing 1100 ft proceed on RDL 199 AEA VOR to DISEV point.

TRANSITION ALT 6000

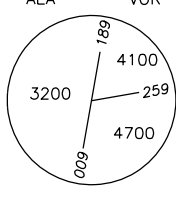


OCA(OCH)		A	B	C	D	
STRAIGHT IN APPROACH	ILS	M.A. MNM CLIMB GRADIENT 2.5%	475(388)	485(398)	495(408)	505(418)
		M.A. MNM CLIMB GRADIENT 4%	277(190)	288(201)	297(210)	307(220)
	LOC/DME		600 (513)			
CIRCLING only east of RWY		1100(1013)	1220(1133)	1220(1133)	1400(1313)	

WARNING: Due to obstacles not lighted S/W of the AD circling allowed only strictly EAST of the RWY

NOT ALLOWED

FT PER MIN	GS	ILS DME	ALT (HGT)	MNM SECT ALT AEA	VOR
424	80	7	2310 (2223)		
530	100	6	1990 (1903)		
636	120	5	1675 (1588)		
742	140	4	1355 (1268)		
848	160	3	1035 (948)		
954	180	2	720 (633)		

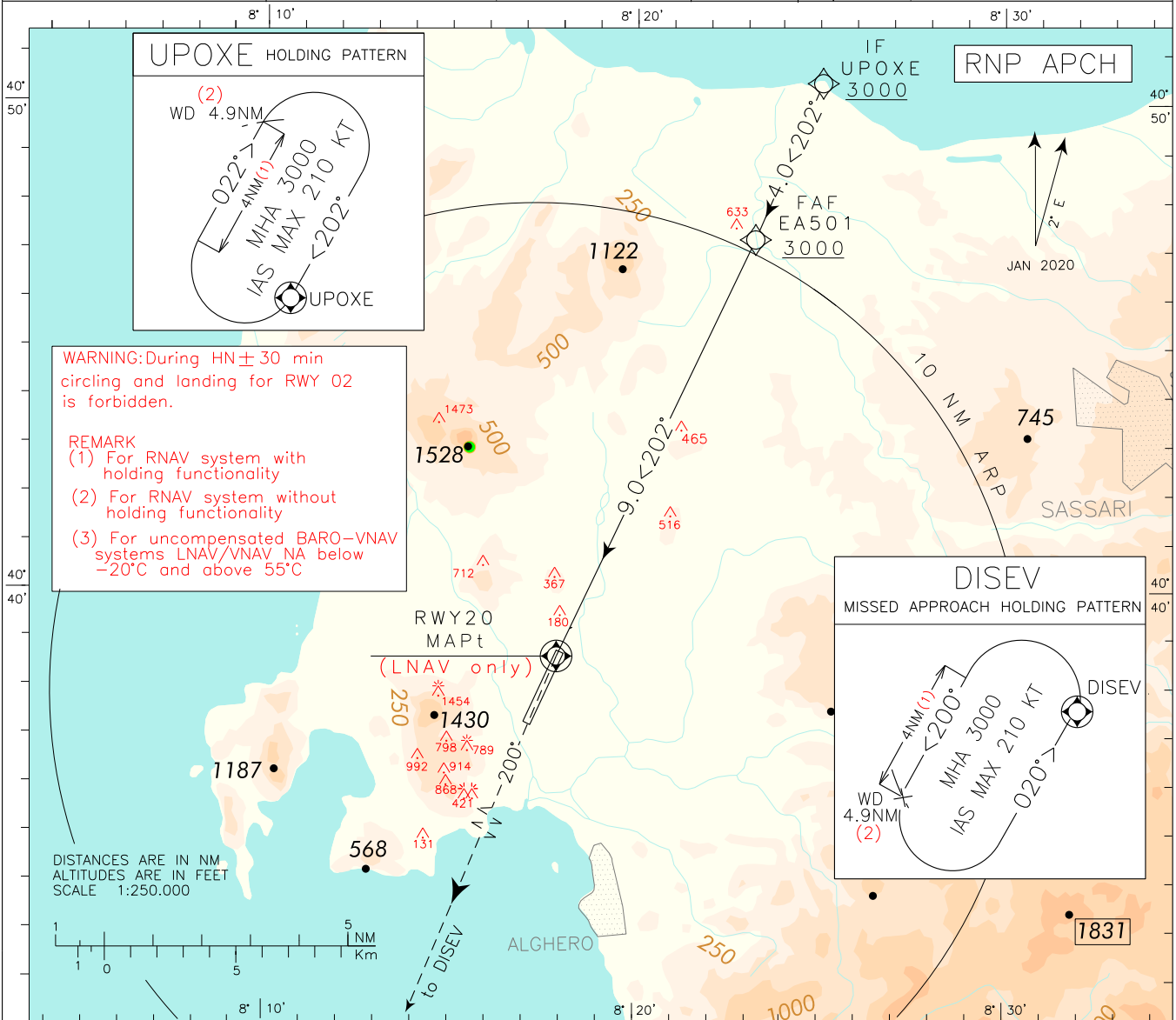


ICAO – INSTRUMENT APPROACH CHART

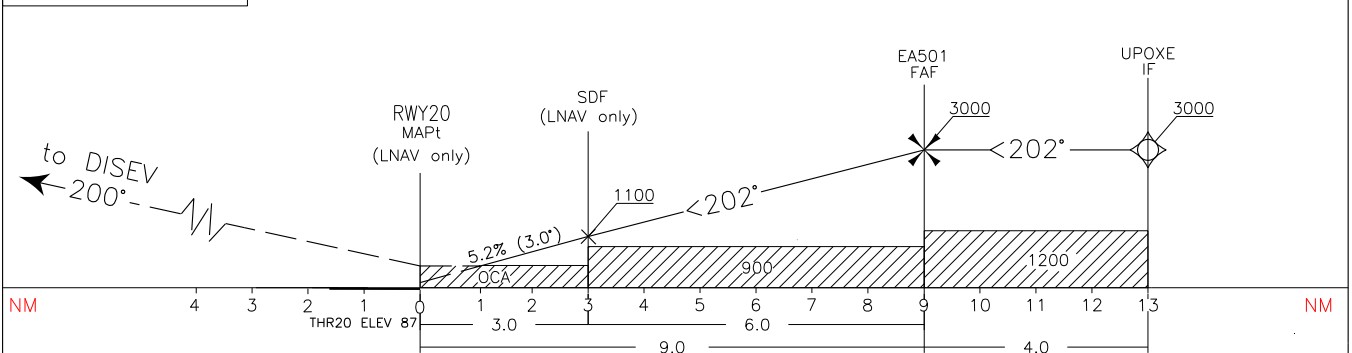
AD 2 LIEA 5-5

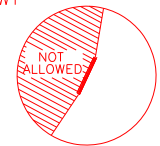
AMDT. 7
 DOC 8168 ED 6 - 2014
 CHANGE: MAG VAR UPDATED - EA501 (FAF) ALTITUDE CONSTRAINT MODIFIED

EGNOS Ch 84236 E20A	APP	Roma Radar	125.950 (127.125)	AD ELEV	L E A	ALGHERO/FERTILIA RNP RWY 20
	TWR	Alghero TWR	118.850	87		
	ATIS	Alghero terminal information	125.025			



TRANSITION ALT 6000	MISSED APPROACH: Climbing 3000 FT, proceed to DISEV on course 200° and hold
RDH 17 M	



OCA(OCH)		A	B	C	D	WARNING: Due to obstacles not lighted S/W of the AD circling allowed only strictly EAST of the RWY 	FT PER MIN	GS	RWY20 DISTANCE	ALT (HGT)	MNM SECT ALT ARP 4350	
STRAIGHT IN APPROACH	LPV	M.A. MNM CLIMB GRADIENT 2.5%	520(433)	530(443)	540(453)		550(463)	430	80	6		2055 (1968)
		M.A. MNM CLIMB GRADIENT 4%	350(263)		360(273)		530	100	5	1735 (1648)		
	LNAV/VNAV	530(443)	540(453)	550(463)	560(473)		640	120	4	1415 (1328)		
	LNAV	720(633)					750	140	3	1100 (1013)		
CIRCLING		1150(1063)	1290(1203)	1400(1313)		850	160	2	780 (693)			
						960	180					

TABULAR DESCRIPTION Alghero/Fertilia RNP RWY20

Serial Number	Path Terminator	Waypoint Identifier	Fly Over	Course °M(°T)	Magnetic Variation (°)	Distance (NM)	Turn Direction	Altitude (ft)	Speed Limit (kt)	VPA/TCH	Navigation Specification
010	IF	UPOXE	-	-	-	-	-	+ 3000	-	-	RNP APCH
020	TF	EA501	-	202 (204.7)	-	4.0	-	+ 3000	-	-	RNP APCH
030	TF	RWY20	Y	202 (204.6)	-	9.0	-	@ 143	-	-3.0/56	RNP APCH
040	CF	DISEV	-	200 (202.3)	2	8.5	-		-	-	RNP APCH
050	HM	DISEV	Y	020 (021.8)	-	-	L	+ 3000	-210	-	RNAV 1

Path Terminator	Waypoint Identifier	Inbound Course °M (°T)	Leg Distance (NM) (1)	Timing(min.)/ Waypoint Distance (NM) (2)	Turn Direction	Minimum Altitude (FT)	Maximum Altitude (FL)	Speed Limit (kt)	Magnetic Variation (°)	Navigation Specification
HM	DISEV	020 (021.8)	4	-/4.9	L	3000	-	210	2	RNAV 1

Path Terminator	Waypoint Identifier	Inbound Course °M (°T)	Leg Distance (NM) (1)	Timing(min.)/ Waypoint Distance (NM) (2)	Turn Direction	Minimum Altitude (FT)	Maximum Altitude (FL)	Speed Limit (kt)	Magnetic Variation (°)	Navigation Specification
HM	UPOXE	202 (204.7)	4	-/4.9	R	3000	-	210	2	RNAV 1

(1) RNAV system with holding functionality

(2) RNAV system without holding functionality

WAYPOINT LIST
RNP RWY20

Waypoint Identifier	Coordinates
EA501	N 40°46'49.62" E 008°22'48.34"

SBAS FAS DATA BLOCK LIEA RNP RWY 20

Input data

Operation Type	0
SBAS Provider	1
Airport Identifier	LIEA
Runway	20
Runway Direction	0
Approach Performance Designator	0
Route Indicator	
Reference Path Data Selector	0
Reference Path Identifier	B20A
LTP/FTP Latitude	403839.9005N
LTP/FTP Longitude	0081753.3565E
LTP/FTP Ellipsoidal Height (metres)	73.5
FPAP Latitude	403711.4540N
Delta FPAP Latitude (seconds)	-88.4465
FPAP Longitude	0081700.2150E
Delta FPAP Longitude (seconds)	-53.1415
Threshold Crossing Height	17.0
TCH Units Selector	1
Glidepath Angle (degrees)	3.00
Course Width (metres)	105.00
Length Offset (metres)	0
HAL (metres)	40.0
VAL (metres)	50.0

Output data

Data Block	10 01 05 09 0C 14 00 00 01 30 32 05 39 54 71 11 99 A9 8F 03 DP 16 03 4D PD D5 60 FE 54 81 2C 01 64 00 C8 FA CB E4 B9 56
Calculated CRC Value	CBE4B956

Required Additional Data

ICAO Code	LI
LTP/FTP Orthometric Height (metres)	26.5
FPAP Orthometric Height (metres)	20.8

Intenzionalmente bianca

Intentionally left blank

TABULAR DESCRIPTION Alghero/Fertilia RNP RWY 02

Serial Number	Path Terminator	Waypoint Identifier	Fly Over	Course °M(°T)	Magnetic Variation	Distance (NM)	Turn Direction	Altitude (ft)	Speed Limit (kt)	VPA/TCH	Navigation Specification
010	IF	AEA	-		-	-	-	+ 6000	-	-	RNP APCH
020	TF	EA507	-	165 (167.0)	-	8.4	-	+ 4000	-	-	RNP APCH
030	TF	EA508	-	202 (204.6)	-	6.0	-	+ 3000	-	-	RNP APCH
040	TF	EA509	-	292 (294.5)	-	5.0	-	+ 2500	-	-	RNP APCH
050	TF	EA510	-	022 (024.6)	-	4.0	R	+ 2500	- 210	v	RNP APCH
060	TF	RWY02	Y	022 (024.6)	-	7.5	-	@ 118	-	- 3.0/50	RNP APCH
070	CF	DAVID	-	022 (025.3)	2	-	-		-	-	RNP APCH
080	HM	DAVID	Y	202 (204.6)	-	-	L	+ 3000	-	-	RNAV 1

Path Terminator	Waypoint Identifier	Inbound Course °M(°T)	Leg Distance (NM) (1)	Timing(min.)/ Waypoint Distance (NM) (2)	Turn Direction	Minimum Altitude (FT)	Maximum Altitude (FL)	Speed Limit (kt)	Magnetic Variation (°)	Navigation Specification
HM	DAVID	202 (204.6)	4	-/5.6	L	3000	-	-	2	RNAV 1

Path Terminator	Waypoint Identifier	Inbound Course °M(°T)	Leg Distance (NM) (1)	Timing(min.)/ Waypoint Distance (NM) (2)	Turn Direction	Minimum Altitude (FT)	Maximum Altitude (FL)	Speed Limit (kt)	Magnetic Variation (°)	Navigation Specification
HM	AEA	176 (178.8)	4	-/5.0	R	4000	-	- 210	2	RNAV 1

- (1) RNAV system with holding functionality
(2) RNAV system without holding functionality

WAYPOINT LIST
RNP RWY 02

Waypoint Identifier	Coordinates
EA507	N 40°30'07.37" E 008°19'58.49"
EA508	N 40°24'39.84" E 008°16'42.13"
EA509	N 40°26'44.59" E 008°10'44.81"
EA510	N 40°30'23.07" E 008°12'55.41"

SBAS FAS DATA BLOCK LIEA RNP RWY 02

Input data

Operation Type	0
SBAS Provider	1
Airport Identifier	LIEA
Runway	02
Runway Direction	0
Approach Performance Designator	0
Route Indicator	
Reference Path Data Selector	0
Reference Path Identifier	E02A
LTP/FTP Latitude	403711.4540N
LTP/FTP Longitude	0081700.2150E
LTP/FTP Ellipsoidal Height (metres)	67.8
FPAP Latitude	403839.9005N
Delta FPAP Latitude (seconds)	88.4465
FPAP Longitude	0081753.3565E
Delta FPAP Longitude (seconds)	53.1415
Threshold Crossing Height	50.0
TCH Units Selector	0
Glidepath Angle (degrees)	3.00
Course Width (metres)	105.00
Length Offset (metres)	0
HAL (metres)	40.0
VAL (metres)	50.0

Output data

Data Block	10 01 05 09 0C 02 00 00 01 32 30 05 3C A1 6E 11 6E 0A 8E 03 A6 16 FD B2 02 2B 9F 01 F4 01 2C 01 64 00 C8 FA A2 F3 AA EC
Calculated CRC Value	A2F3AAEC

Required Additional Data

ICAO Code	LI
LTP/FTP Orthometric Height (metres)	20.8
FPAP Orthometric Height (metres)	26.5

Intenzionalmente bianca

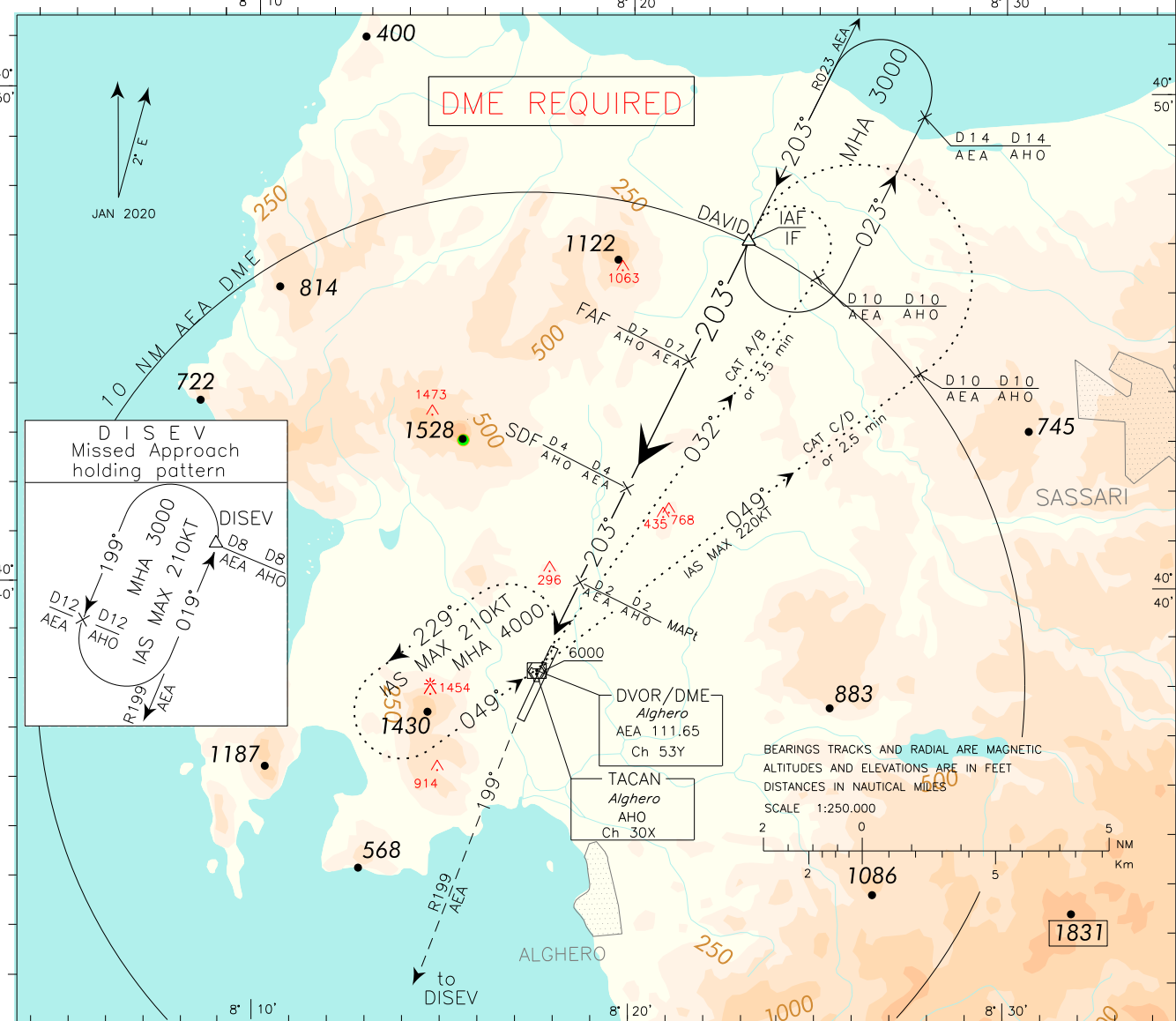
Intentionally left blank

ICAO – INSTRUMENT APPROACH CHART

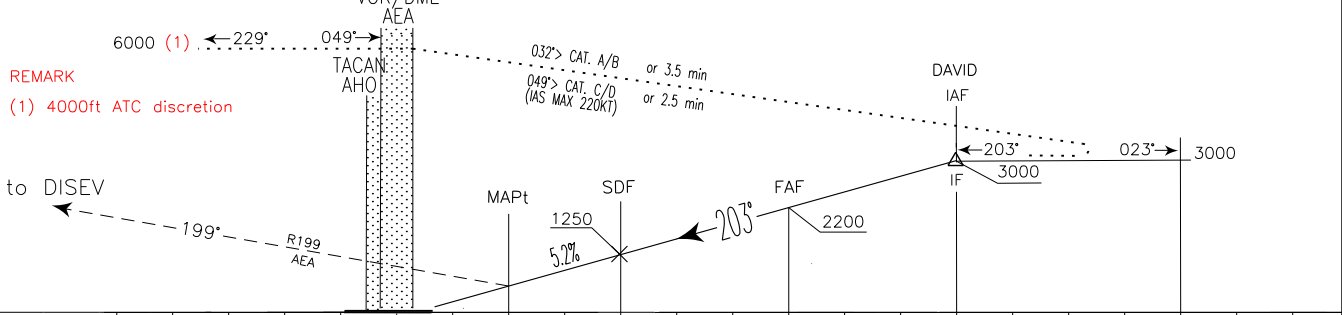
AD 2 LIEA 5-13

DOC 8168 ED 5 - 2006 AMDT 4
CHANGE: CIRCLING MINIMA CAT A/B/C UPDATED

<p>WARNING: During HN ± 30 min circling and landing for RWY02 is forbidden.</p>	APP	Roma Radar	125.950 (127.125)	AD ELEV	87	<p>ALGERO/FERTILIA VOR RWY 20</p>
	TWR	Alghero TWR	118.850			
	ATIS	Alghero terminal information	125.025			



TRANSITION ALT 6000
MISSED APPROACH: Proceed to AEA VOR climbing to 3000 ft. Leave AEA VOR on RDL 199 (TR 199°) bound to DISEV.

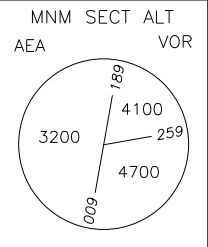


AEA DME	5	4	3	2	1	0	1	2	3	4	5	6	7	8	9	10	11	12	13	14	15	16	AEA DME
AHO TACAN	6	5	4	3	2	1	0	1	2	3	4	5	6	7	8	9	10	11	12	13	14	15	AHO TACAN

OCA(OCH)		A	B	C	D
STRAIGHT IN APPROACH	VOR/DME	620 (533)			
	CIRCLING only east of RWY	1220 (1133)	1320(1233)	1400(1313)	

WARNING:
Due to obstacles not lighted S/W of the AD circling allowed only strictly EAST of the RWY.

FT PER MIN	GS	FAF-MAPt 5.00 NM	AEA DME	ALT (HGT)
421	80	3 : 45	7	2200 (2113)
527	100	3 : 00	6	1885 (1798)
632	120	2 : 30	5	1570 (1483)
737	140	2 : 09	4	1250 (1163)
843	160	1 : 52	3	940 (853)
948	180	1 : 40	2	625 (538)



DOC 8168 ED 5 – 2006 AMDT 4

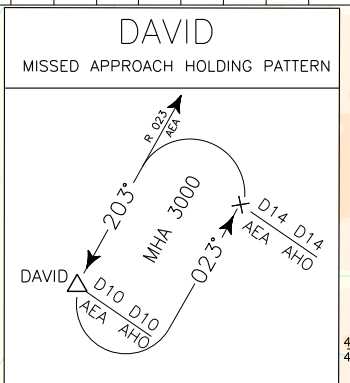
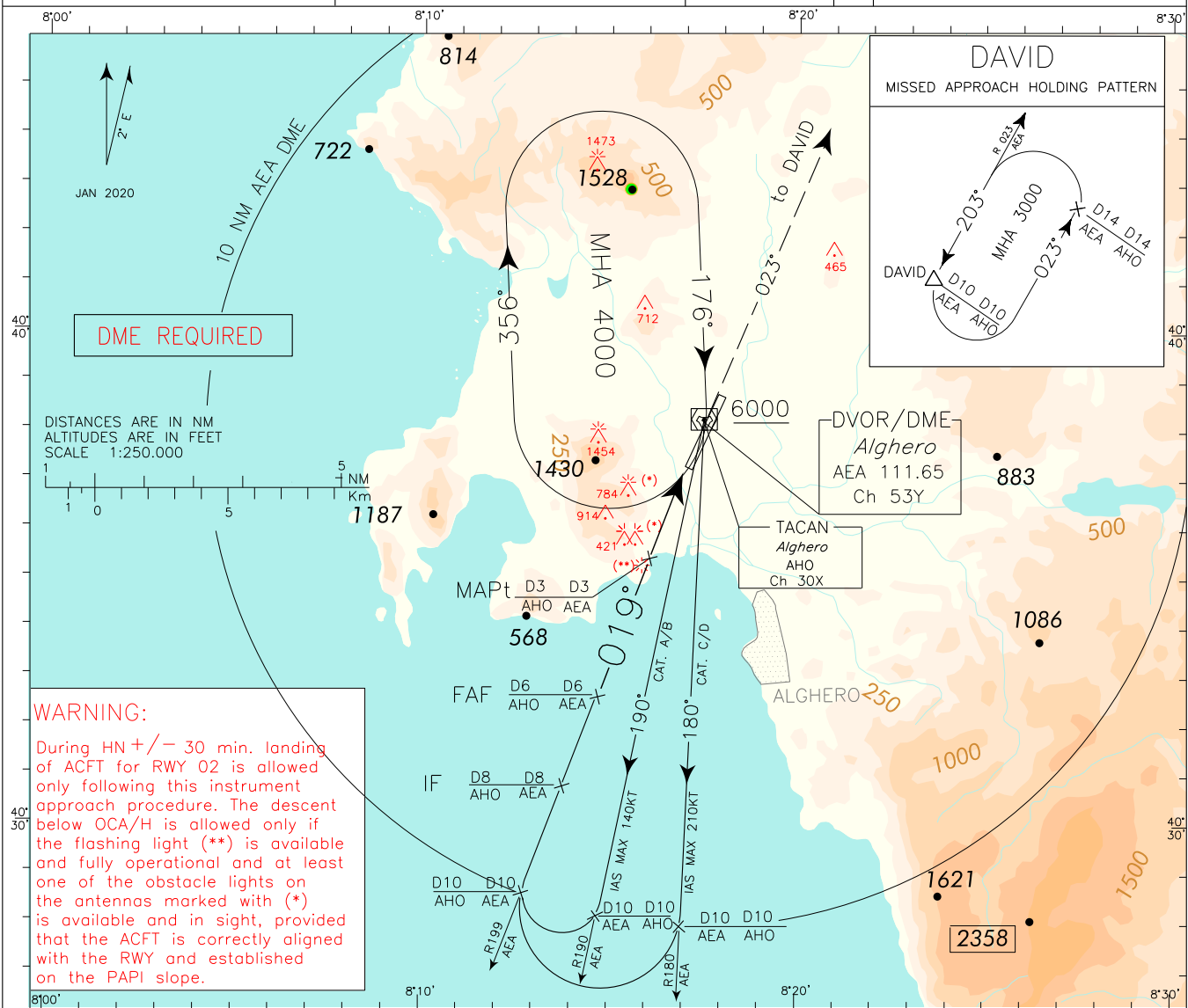
CHANGE: CIRCLING MINIMA CAT A/B/C UPDATED

REMARKS:
 1. Due to not lighted obstacles close to the THR penetrating Annex 14 approach surface, PAPI is compulsory. PAPI OCS not affected by the above obstacles.
 2. Final approach track 020° is offset 3'44" from RCL.

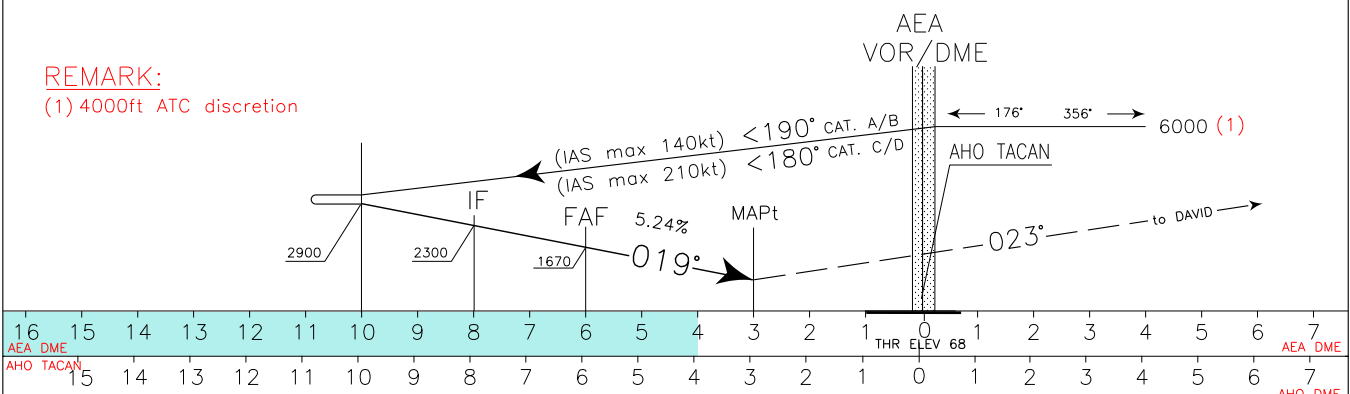
APP Roma Radar 125.950 (127.125)
 TWR Alghero TWR 118.850
 ATIS Alghero Terminal Information 125.025

AD ELEV 87

LIEA
 ALGHERO/ FERTILIA
 VOR RWY 02



TRANSITION ALT 6000
 MISSED APPROACH: Climbing to 3000 ft, proceed to AEA VOR. Then join RDL 023 AEA VOR (TR 023°) bound to DAVID, to be reached at 3000 ft.



OCA(OCH)		A	B	C	D	WARNING: CIRCLING ALLOWED ONLY EAST OF THE RWY. CIRCLING FOR RWY 02 IS FORBIDDEN DURING HN +/- 30 MIN.	GS	FT PER MIN	FAF-MAPT	MAPt-THR	THR AEA	DME AEA	ALT (HGT)	MNM SECT ALT AEA VOR
STRAIGHT IN APPROACH	VOR	1100 (1032)					80	424	2 : 15	1 : 23	8			
CIRCLING	This procedure can be performed with the following meteorological minima: - ceiling 1500 ft or above; - ground visibility not less than 5 Km; - flight visibility not less than 5 Km by day and 8 Km by night					100	530	1 : 48	1 : 06	7	2000 (1932)			
						120	636	1 : 30	0 : 55	6	1670 (1602)			
						140	742	1 : 17	0 : 47	5	1350 (1282)			
						160	848	1 : 08	0 : 41					
		1220 (1133)		1320 (1233)		1400 (1313)		180	954	1 : 00	0 : 37			