

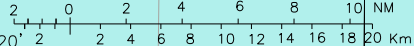
FREQUENCIES

APP	Roma Radar	125.950 (127.125)
TWR	Alghero TWR	118.850
ATIS	Alghero terminal information	125.025

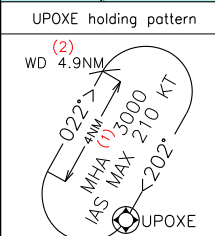
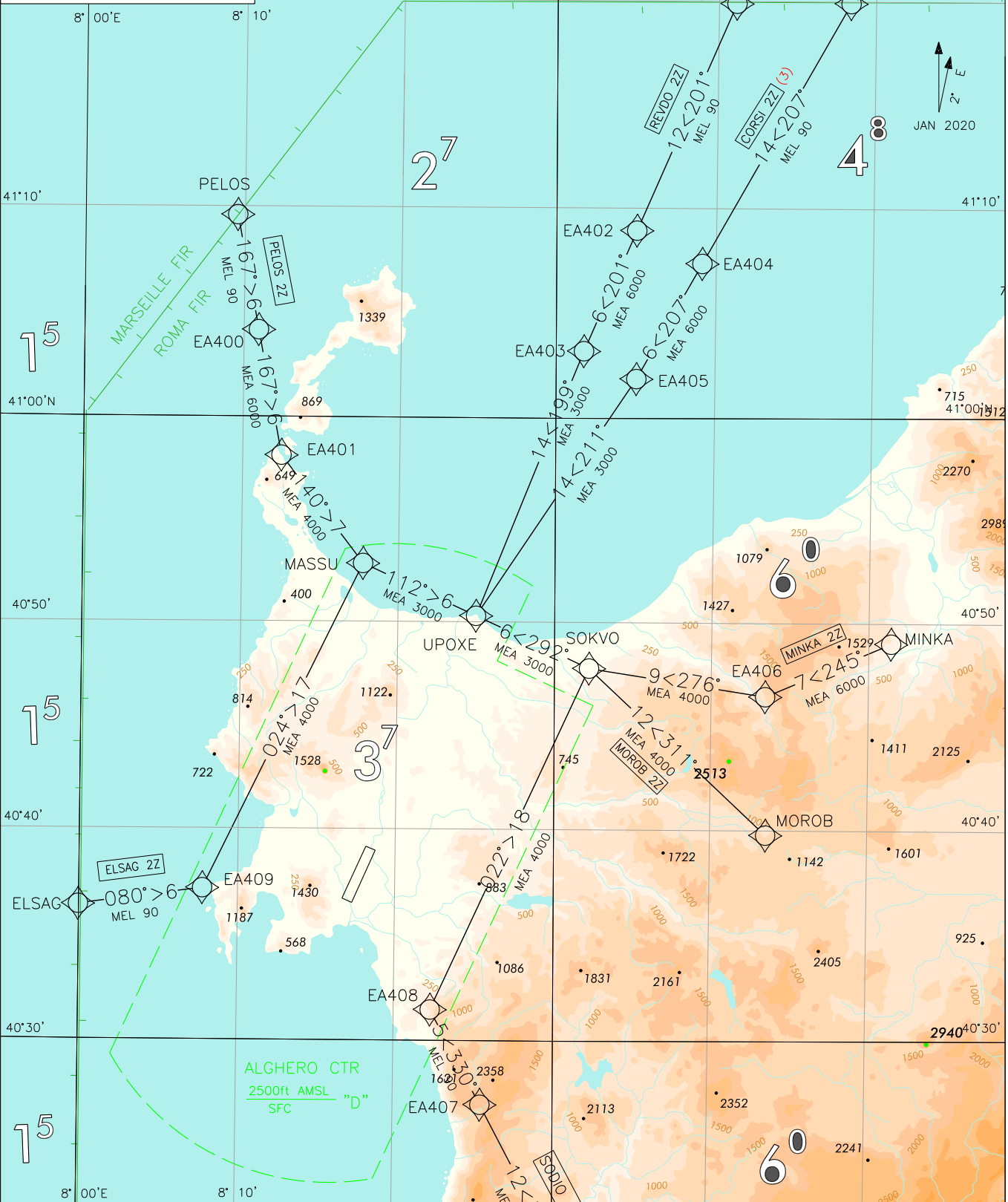
DISTANCES: NM  
ALTITUDES: FEET  
SCALE 1:500.000

STAR RNAV1  
RWY 20

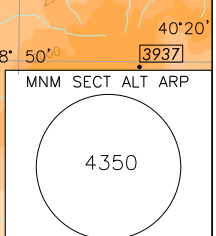
ALGERO / FERTILIA  
TRANSITION ALT 6000



CHANGE: MAG VAR UPDATED - RENUMBERED STAR



- REMARKS**
- (1) For RNAV system with RNAV Holding functionality
  - (2) For RNAV system without RNAV Holding functionality
  - (3) Available only for traffic departing from LFKJ



**ALGHERO/Fertilia**  
**STAR RNAV1 RWY 20**

**CORSI 2Z** (Available only for traffic departing from LFKJ)

Path Terminator	Waypoint Identifier	Fly Over	Course °M(°T)	Magnetic Variation	Distance (NM)	Turn Direction	Altitude (ft)	Speed Limit (kt)	Navigation Specification
IF	CORSI	-	-	-	-	-	-	-	RNAV1
TF	EA404	-	207 (209.6)	-	14.4	-	+FL90	-	RNAV1
TF	EA405	-	207 (209.6)	-	6.4	-	+6000	-	RNAV1
TF	UPOXE	-	211 (213.7)	-	13.8	-	+3000	-210	RNAV1

**ELSAG 2Z**

Path Terminator	Waypoint Identifier	Fly Over	Course °M(°T)	Magnetic Variation	Distance (NM)	Turn Direction	Altitude (ft)	Speed Limit (kt)	Navigation Specification
IF	ELSAG	-	-	-	-	-	-	-	RNAV1
TF	EA409	-	080 (082.3)	-	6.0	-	+FL90	-	RNAV1
TF	MASSU	-	024 (026.0)	-	17.0	-	+4000	-	RNAV1
TF	UPOXE	-	112 (114.7)	-	6.0	-	+3000	-210	RNAV1

**MINKA 2Z**

Path Terminator	Waypoint Identifier	Fly Over	Course °M(°T)	Magnetic Variation	Distance (NM)	Turn Direction	Altitude (ft)	Speed Limit (kt)	Navigation Specification
IF	MINKA	-	-	-	-	-	-	-	RNAV1
TF	EA406	-	245 (247.2)	-	6.6	-	+6000	-	RNAV1
TF	SOKVO	-	276 (278.9)	-	8.6	-	+4000	-	RNAV1
TF	UPOXE	-	292 (294.7)	-	6.0	-	+3000	-210	RNAV1

**MOROB 2Z**

Path Terminator	Waypoint Identifier	Fly Over	Course °M(°T)	Magnetic Variation	Distance (NM)	Turn Direction	Altitude (ft)	Speed Limit (kt)	Navigation Specification
IF	MOROB	-	-	-	-	-	-	-	RNAV1
TF	SOKVO	-	311 (313.2)	-	11.7	-	+4000	-	RNAV1
TF	UPOXE	-	292 (294.7)	-	6.0	-	+3000	-210	RNAV1

**PELOS 2Z**

Path Terminator	Waypoint Identifier	Fly Over	Course °M(°T)	Magnetic Variation	Distance (NM)	Turn Direction	Altitude (ft)	Speed Limit (kt)	Navigation Specification
IF	PELOS	-	-	-	-	-	-	-	RNAV1
TF	EA400	-	167 (169.3)	-	5.6	-	+FL90	-	RNAV1
TF	EA401	-	167 (169.3)	-	6.1	-	+6000	-	RNAV1
TF	MASSU	-	140 (142.6)	-	6.5	-	+4000	-	RNAV1
TF	UPOXE	-	112 (114.7)	-	6.0	-	+3000	-210	RNAV1

## REVDO 2Z

Path Terminator	Waypoint Identifier	Fly Over	Course °M(°T)	Magnetic Variation	Distance (NM)	Turn Direction	Altitude (ft)	Speed Limit (kt)	Navigation Specification
IF	REVDO	-	-	-	-	-	-	-	RNAV1
TF	EA402	-	201 (203.6)	-	11.9	-	+FL90	-	RNAV1
TF	EA403	-	201 (203.5)	-	6.3	-	+6000	-	RNAV1
TF	UPOXE	-	199 (201.8)	-	13.8	-	+3000	-210	RNAV1

## SODIO 2Z

Path Terminator	Waypoint Identifier	Fly Over	Course °M(°T)	Magnetic Variation	Distance (NM)	Turn Direction	Altitude (ft)	Speed Limit (kt)	Navigation Specification
IF	SODIO	-	-	-	-	-	-	-	RNAV1
TF	EA407	-	330 (332.1)	-	11.6	-	+FL100	-	RNAV1
TF	EA408	-	330 (332.0)	-	5.2	-	+FL90	-	RNAV1
TF	SOKVO	-	022 (024.8)	-	18.1	-	+4000	-	RNAV1
TF	UPOXE	-	292 (294.7)	-	6.0	L	+3000	-210	RNAV1

## HOLDING RNAV1

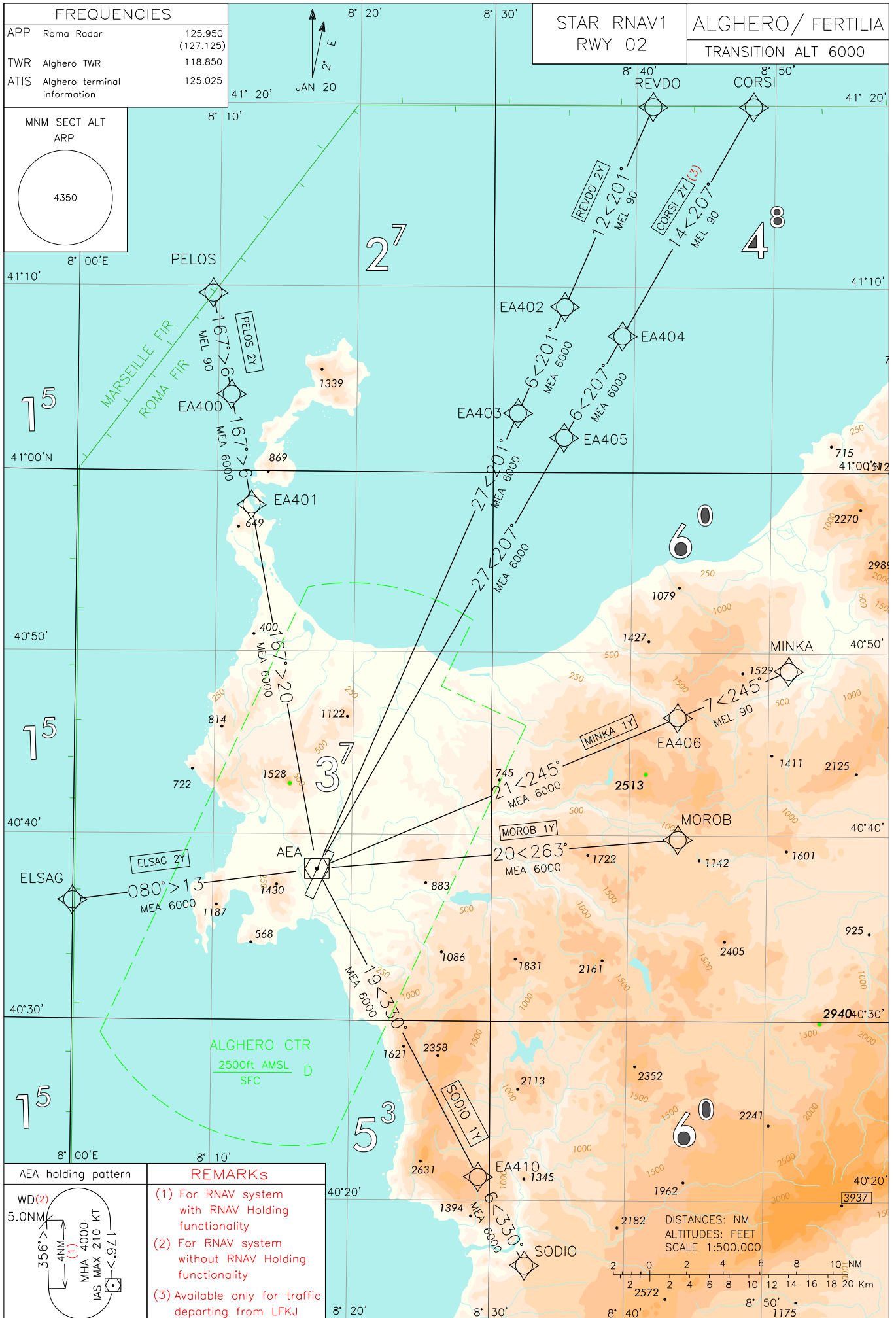
Path Terminator	Waypoint Identifier	Inbound Course °M (°T)	Leg Distance (NM) (1)	Timing(min.)/ Waypoint Distance (NM) (2)	Turn Direction	Minimum Altitude (FT)	Maximum Altitude (FL)	Speed Limit (kt)	Magnetic Variation (°)	Navigation Specification
HM	UPOXE	202 (204.7)	4.0	-/4.9	R	+3000	-	-210	3.0	RNAV1

(1) RNAV system with holding functionality

(2) RNAV system without holding functionality

## WAYPOINT LIST

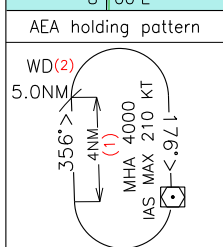
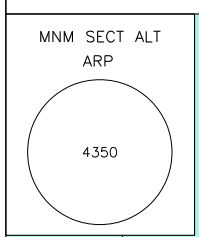
Waypoint Identifier	Coordinates
EA400	41°04'11.2" N 008°11'04.2" E
EA401	40°58'09.3" N 008°12'34.6" E
EA402	41°09'03.4" N 008°35'06.9" E
EA403	41°03'14.3" N 008°31'45.7" E
EA404	41°07'28.0" N 008°39'16.5" E
EA405	41°01'54.6" N 008°35'06.0" E
EA406	40°46'36.8" N 008°43'21.4" E
EA407	40°26'55.5" N 008°25'25.1" E
EA408	40°31'29.7" N 008°22'14.7" E
EA409	40°37'17.7" N 008°07'48.1" E



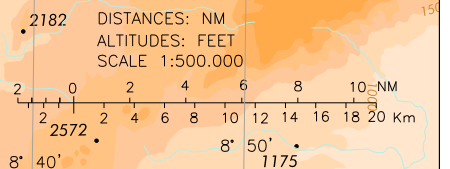
FREQUENCIES	
APP Roma Radar	125.950 (127.125)
TWR Alghero TWR	118.850
ATIS Alghero terminal information	125.025

STAR RNAV1  
RWY 02

ALGERO/ FERTILIA  
TRANSITION ALT 6000



- REMARKS**
- (1) For RNAV system with RNAV Holding functionality
  - (2) For RNAV system without RNAV Holding functionality
  - (3) Available only for traffic departing from LFKJ



**ALGHERO/Fertilia**  
**STAR RNAV1 RWY 02**

**CORSI 2Y** (Available only for traffic departing from LFKJ)

Path Terminator	Waypoint Identifier	Fly Over	Course °M(°T)	Magnetic Variation	Distance (NM)	Turn Direction	Altitude (ft)	Speed Limit (kt)	Navigation Specification
IF	CORSI	-	-	-	-	-	-	-	RNAV1
TF	EA404	-	207 (209.6)	-	14.4	-	+FL90	-	RNAV1
TF	EA405	-	207 (209.6)	-	6.4	-	+6000	-	RNAV1
TF	AEA	-	207 (209.4)	-	27.1	-	+6000	-210	RNAV1

**ELSAG 2Y**

Path Terminator	Waypoint Identifier	Fly Over	Course °M(°T)	Magnetic Variation	Distance (NM)	Turn Direction	Altitude (ft)	Speed Limit (kt)	Navigation Specification
IF	ELSAG	-	-	-	-	-	-	-	RNAV1
TF	AEA	-	080 (082.4)	-	13.5	-	+6000	-210	RNAV1

**MINKA 1Y**

Path Terminator	Waypoint Identifier	Fly Over	Course °M(°T)	Magnetic Variation	Distance (NM)	Turn Direction	Altitude (ft)	Speed Limit (kt)	Navigation Specification
IF	MINKA	-	-	-	-	-	-	-	RNAV1
TF	EA406	-	245 (247.2)	-	6.6	-	+FL90	-	RNAV1
TF	AEA	-	245 (246.9)	-	21.4	-	+6000	-210	RNAV1

**MOROB 1Y**

Path Terminator	Waypoint Identifier	Fly Over	Course °M(°T)	Magnetic Variation	Distance (NM)	Turn Direction	Altitude (ft)	Speed Limit (kt)	Navigation Specification
IF	MOROB	-	-	-	-	-	-	-	RNAV1
TF	AEA	-	263 (265.0)	-	19.8	-	+6000	-210	RNAV1

**PELOS 2Y**

Path Terminator	Waypoint Identifier	Fly Over	Course °M(°T)	Magnetic Variation	Distance (NM)	Turn Direction	Altitude (ft)	Speed Limit (kt)	Navigation Specification
IF	PELOS	-	-	-	-	-	-	-	RNAV1
TF	EA400	-	167 (169.3)	-	5.6	-	+FL90	-	RNAV1
TF	EA401	-	167 (169.3)	-	6.1	-	+6000	-	RNAV1
TF	AEA	-	167 (169.4)	-	20.2	-	+6000	-210	RNAV1

## REVDO 2Y

Path Terminator	Waypoint Identifier	Fly Over	Course °M(°T)	Magnetic Variation	Distance (NM)	Turn Direction	Altitude (ft)	Speed Limit (kt)	Navigation Specification
IF	REVDO	-	-	-	-	-	-	-	RNAV1
TF	EA402	-	201 (203.6)	-	11.9	-	+FL90	-	RNAV1
TF	EA403	-	201 (203.5)	-	6.3	-	+6000	-	RNAV1
TF	AEA	-	201 (203.4)	-	27.2	-	+6000	-210	RNAV1

## SODIO 1Y

Path Terminator	Waypoint Identifier	Fly Over	Course °M(°T)	Magnetic Variation	Distance (NM)	Turn Direction	Altitude (ft)	Speed Limit (kt)	Navigation Specification
IF	SODIO	-	-	-	-	-	-	-	RNAV1
TF	EA410	-	330 (332.1)	-	5.5	-	+6000	-	RNAV1
TF	AEA	-	330 (332.0)	-	19.0	-	+6000	-210	RNAV1

## HOLDING RNAV1

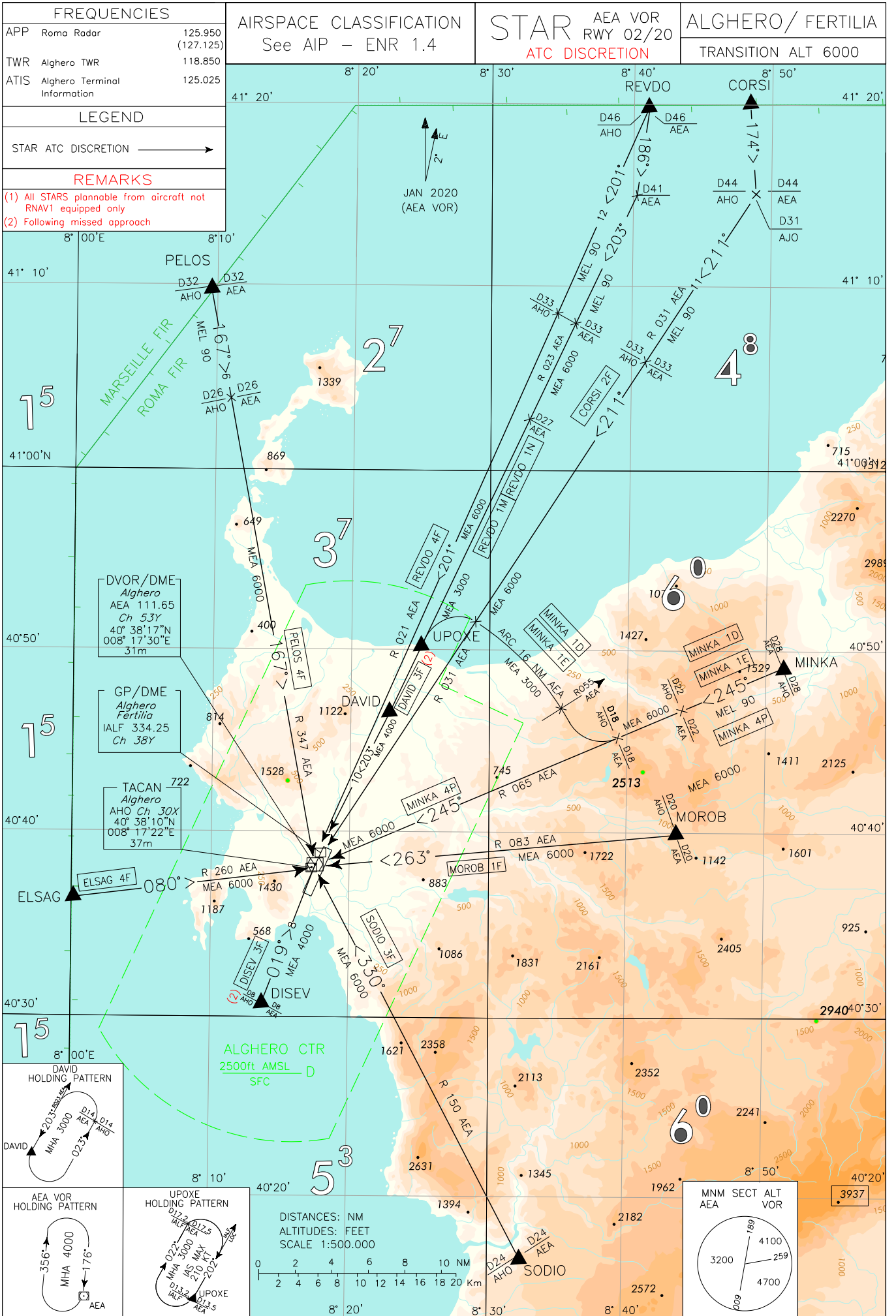
Path Terminator	Waypoint Identifier	Inbound Course °M (°T)	Leg Distance (NM) (1)	Timing(min.)/ Waypoint Distance (NM) (2)	Turn Direction	Minimum Altitude (FT)	Maximum Altitude (FL)	Speed Limit (kt)	Magnetic Variation (°)	Navigation Specification
HM	AEA	176 (178.8)	4.0	- /5.0	R	4000	-	-210	3.0	RNAV1

(1) RNAV system with holding functionality

(2) RNAV system without holding functionality

## WAYPOINT LIST

Waypoint Identifier	Coordinates
EA400	41°04'11.2" N 008°11'04.2" E
EA401	40°58'09.3" N 008°12'34.6" E
EA402	41°09'03.4" N 008°35'06.9" E
EA403	41°03'14.3" N 008°31'45.7" E
EA404	41°07'28.0" N 008°39'16.5" E
EA405	41°01'54.6" N 008°35'06.0" E
EA406	40°46'36.8" N 008°43'21.4" E
EA410	40°21'29.6" N 008°29'10.9" E



CHANGE: STARS MINKA 1D/1E IMPLEMENTED

**ALGHERO/Fertilia****STAR AEA VOR RWY 02/20****(ATC discretion)****CORSI 2F**

CORSI – TR 174° (RDL 174 AJO VOR) until 31NM AJO DME (or 44NM AEA DME), then turn right on RDL 031 AEA VOR (TR 211°) bound to AEA VOR/DME.

MEL/MEA: CORSI – RDL 031/33NM AEA VOR/DME (or 33NM AHO TACAN): FL 90;  
RDL 031/33NM AEA VOR/DME (or 33NM AHO TACAN) – AEA VOR/DME 6000 FT

**DAVID 3F (following missed approach)**

DAVID – TR 203° (RDL 023 AEA VOR) – AEA VOR/DME.

MEA: 4000 FT

**DISEV 3F (following missed approach)**

DISEV – TR 019° (RDL 199 AEA VOR) – AEA VOR/DME.

MEA: 4000 FT

**ELSAG 4F**

ELSAG – TR 080° (RDL 260 AEA VOR) – AEA VOR/DME.

MEA: 6000 FT

**MINKA 1D**

MINKA follow TR245°(RDL065 AEA VOR) until 18NM AEA DME, then turn right until joining ARC 16 NM AEA DME; crossing RDL 031 AEA VOR turn left to intercept and follow RDL 023 AEA VOR bound to DAVID.

MEL/MEA: MINKA - RDL065/22 NM AEA VOR/DME: FL90  
RDL 065/22 NM AEA VOR/DME – ARC 16 NM AEA DME / RDL 055 AEA VOR : 6000FT  
ARC 16 NM AEA DME / RDL 055 AEA VOR – DAVID:3000FT

**MINKA 1E**

MINKA follow TR245°(RDL065 AEA VOR) until 18NM AEA DME, then turn right until joining ARC 16 NM AEA DME; crossing RDL 031 AEA VOR turn left to intercept and follow RDL 023 AEA VOR bound to UPOXE.

MEL/MEA: MINKA - RDL065/22 NM AEA VOR/DME: FL90  
RDL 065/22 NM AEA VOR/DME — ARC 16 NM AEA DME / RDL 055 AEA VOR : 6000FT  
ARC 16 NM AEA DME / RDL 055 AEA VOR – UPOXE:3000FT

**MINKA 4P**

MINKA – TR 245° (RDL 065 AEA VOR) – AEA VOR/DME.

MEL/MEA: MINKA – RDL 065/22 NM AEA VOR/DME (or 22NM AHO TACAN): FL 90;  
RDL 065/22NM AEA VOR/DME (or 22NM AHO TACAN) – AEA VOR/DME: 6000 FT

**MOROB 1F**

MOROB – TR 263° (RDL 083 AEA VOR) – AEA VOR/DME.

MEA: 6000 FT

**PELOS 4F**

PELOS – TR 167° (RDL 347 AEA VOR) – AEA VOR/DME.

MEL/MEA: PELOS – RDL 347/26NM AEA VOR/DME (or 26NM AHO TACAN): FL 90;  
RDL 347/26NM AEA VOR/DME (or 26NM AHO TACAN) – AEA VOR/DME: 6000 FT

**REVDO 4F**

REVDO – TR 201° (RDL 021 AEA VOR) – AEA VOR/DME.

MEL/MEA: REVDO – RDL 021/33NM AEA VOR/DME (or 33NM AHO TACAN): FL90;  
RDL 021/33NM AEA VOR/DME (or 33NM AHO TACAN) – AEA VOR/DME: 6000 FT

**SODIO 3F**

SODIO – TR 330° (RDL 150 AEA VOR) – AEA VOR/DME.



MEA: 6000 FT

**REVDO 1M**

REVDO – TR 186° (RDL 186 AJO VOR) until D41 AEA DME, then TR 203° (RDL 023 AEA VOR) bound to UPOXE.

MEL/MEA: REVDO – RDL 023/33NM AEA VOR/DME (or 33NM AHO TACAN): FL90;

RDL 023/33NM AEA VOR/DME (or 33NM AHO TACAN) - RDL 023/27NM AEA VOR/DME (or 27NM AHO TACAN): 6000 FT;

RDL 023/27NM AEA VOR/DME (or 27NM AHO TACAN) – UPOXE: 3000 FT

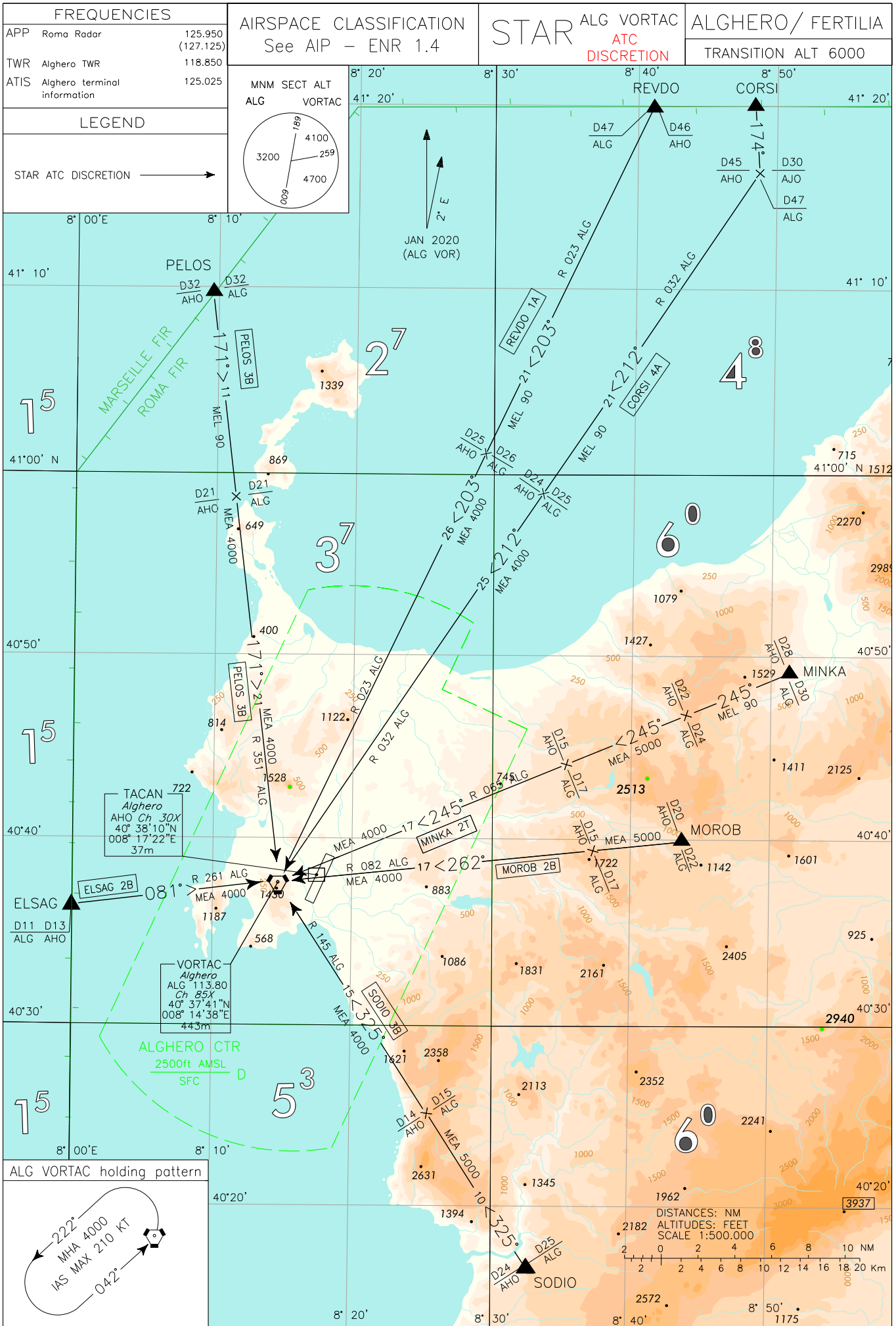
**REVDO 1N**

REVDO – TR 186° (RDL 186 AJO VOR) until D41 AEA DME, then TR 203° (RDL 023 AEA VOR) bound to DAVID

MEL/MEA: REVDO – RDL 023/33NM AEA VOR/DME (or 33NM AHO TACAN): FL90;

RDL 023/33NM AEA VOR/DME (or 33NM AHO TACAN) - RDL 023/27NM AEA VOR/DME (or 27NM AHO TACAN): 6000 FT;

RDL 023/27NM AEA VOR/DME (or 27NM AHO TACAN) – DAVID: 3000 FT



CHANGE: REPRINTING

**ALGHERO/Fertilia****STAR ALG VORTAC (ATC discretion)****CORSI 4A**

CORSI – TR 174° (RDL 174 AJO VOR) until 30NM AJO DME (or 45NM AHO TACAN/47NM ALG TACAN), then turn right on RDL 032 ALG VOR (TR 212°) bound to ALG VORTAC.

MEL/MEA: CORSI – RDL 032/25NM ALG VORTAC (or 24NM AHO TACAN): FL 90;  
RDL 032/25NM ALG VORTAC (or 24NM AHO TACAN) – ALG VORTAC: 4000 FT.

**ELSAG 2B**

ELSAG – TR 081° (RDL 261 ALG VOR) – ALG VORTAC.

MEA: 4000 FT

**MINKA 2T**

MINKA – TR 245° (RDL 065 ALG VOR) – ALG VORTAC.

MEL/MEA: MINKA – RDL 065/24NM ALG VORTAC (or 22NM AHO TACAN): FL 90;  
RDL 065/24NM ALG VORTAC (or 22NM AHO TACAN) – RDL 065/17NM ALG VORTAC (or 15NM AHO TACAN): 5000 FT;  
RDL 065/17NM ALG VORTAC (or 15NM AHO TACAN) – ALG VORTAC: 4000 FT.

**MOROB 2B**

MOROB – TR 262° (RDL 082 ALG VOR) – ALG VORTAC.

MEA: MOROB – RDL 082/17NM ALG VORTAC (or 15NM AHO TACAN): 5000FT;  
RDL 082/17NM ALG VORTAC (or 15NM AHO TACAN) – ALG VORTAC: 4000 FT.

**PELOS 3B**

PELOS – TR 171° (RDL 351 ALG VOR) – ALG VORTAC.

MEL/MEA: PELOS – RDL 351/21NM ALG VORTAC (or 21NM AHO TACAN): FL 90;  
RDL 351/21NM ALG VORTAC (or 21NM AHO TACAN) – ALG VORTAC: 4000 FT.

**REVDO 1A**

REVDO – TR 203° (RDL 023 ALG VOR) – ALG VORTAC.

MEL/MEA: REVDO – RDL 023/26NM ALG VORTAC (or 25NM AHO TACAN): FL 90;  
RDL 023/26NM ALG VORTAC (or 25NM AHO TACAN) – ALG VORTAC: 4000 FT.

**SODIO 3B**

SODIO – TR 325° (RDL 145 ALG VOR) – ALG VORTAC.

MEA: SODIO – RDL 145/15NM ALG VORTAC (or 14NM AHO TACAN): 5000 FT;  
RDL 145/15NM ALG VORTAC (or 14NM AHO TACAN) – ALG VORTAC: 4000 FT.

Intenzionalmente bianca

*Intentionally left blank*