

**Procedura di salita dopo il decollo**

**Decolli da RWY 13R:** procedere lungo il prolungamento asse pista (TR 126°) fino ad attraversare 800 ft, quindi:

- a. virare a destra TR 010° per intercettare e seguire QDR/RDL 330 TRP NDB/VORTAC se autorizzati via GIANO 1H, PAL 1H, PRS 1B o MEGAN 1H;
- b. virare a destra TR 010° per intercettare e seguire QDR/RDL 325 TRP NDB/VORTAC se autorizzati via KAPIL 1B o ADUKA 1B;
- c. seguire RDL 126 TRP VORTAC (QDR 127° TRP NDB) se autorizzati via MEGAN 5E o PAL 1D.

Minimo gradiente di salita:

- 304 ft/NM (5%) fino a lasciare 1500ft, causa ostacoli;
- 425 ft/NM (7%) fino a lasciare FL 85 solo per la SID PAL 1D, per motivi ATC.

**Decolli da RWY 31L:** procedere lungo il prolungamento asse pista fino ad attraversare 600 ft, quindi:

- a. virare a destra TR 350° per intercettare e seguire QDR/RDL 330 TRP NDB/VORTAC se autorizzati via GIANO 1G, PAL 1G, PRS 1A o MEGAN 1G;
- b. virare a destra TR 350° per intercettare e seguire QDR/RDL 325 TRP NDB/VORTAC se autorizzati via KAPIL 1A o ADUKA 1A;

Minimo gradiente di salita: 365 ft/NM (6%), fino a lasciare FL 75, per motivi ATC.

**NOTE GENERALI (riferite alle SID per entrambe le RWY)**

Le virate dopo il decollo dovranno essere eseguite in accordo ai seguenti parametri:

- a. IAS MAX 210 kt, banco 15°, oppure
- b. IAS MAX 250 kt, banco 20°, oppure
- c. rateo di virata 1.5°/sec.

Il gradiente di salita non prende in considerazione ostacoli nella "close-in area" di altezza comprensiva del MOC, inferiore a 60 M (200ft) sull'elevazione della DER (vedere carte ostacoli ICAO e NOTAM in vigore).

**Initial climb procedure after take-off**

**Take-off from RWY 13R:** proceed along the extended runway centre line (TR 126°) until passing 800 ft, then:

- a. turn right TR 010° until joining QDR/RDL 330 TRP NDB/VORTAC if cleared via GIANO 1H, PAL 1H, PRS 1B or MEGAN 1H;
- b. turn right TR 010° until joining QDR/RDL 325 TRP NDB/VORTAC if cleared via KAPIL 1B or ADUKA 1B;
- c. follow RDL 126 TRP VORTAC (QDR 127° TRP NDB) if cleared via MEGAN 5E or PAL 1D.

Minimum climb gradient:

- 304 ft/NM (5%) until leaving 1500ft, due to obstacles;
- 425 ft/NM (7%) until leaving FL 85 for SID PAL 1D only, due to ATC reasons.

**Take-off from RWY 31L:** proceed along the extended runway centre line until passing 600 ft, then:

- a. turn right TR 350° until joining QDR/RDL 330 TRP NDB/VORTAC if cleared via GIANO 1G, PAL 1G, PRS 1A or MEGAN 1G;
- b. turn right TR 350° until joining QDR/RDL 325 TRP NDB/VORTAC if cleared via KAPIL 1A or ADUKA 1A;

Minimum climb gradient: 365 ft/NM (6%), until passing FL 75, due to ATC reasons.

**GENERAL REMARKS (for all SID and both RWY)**

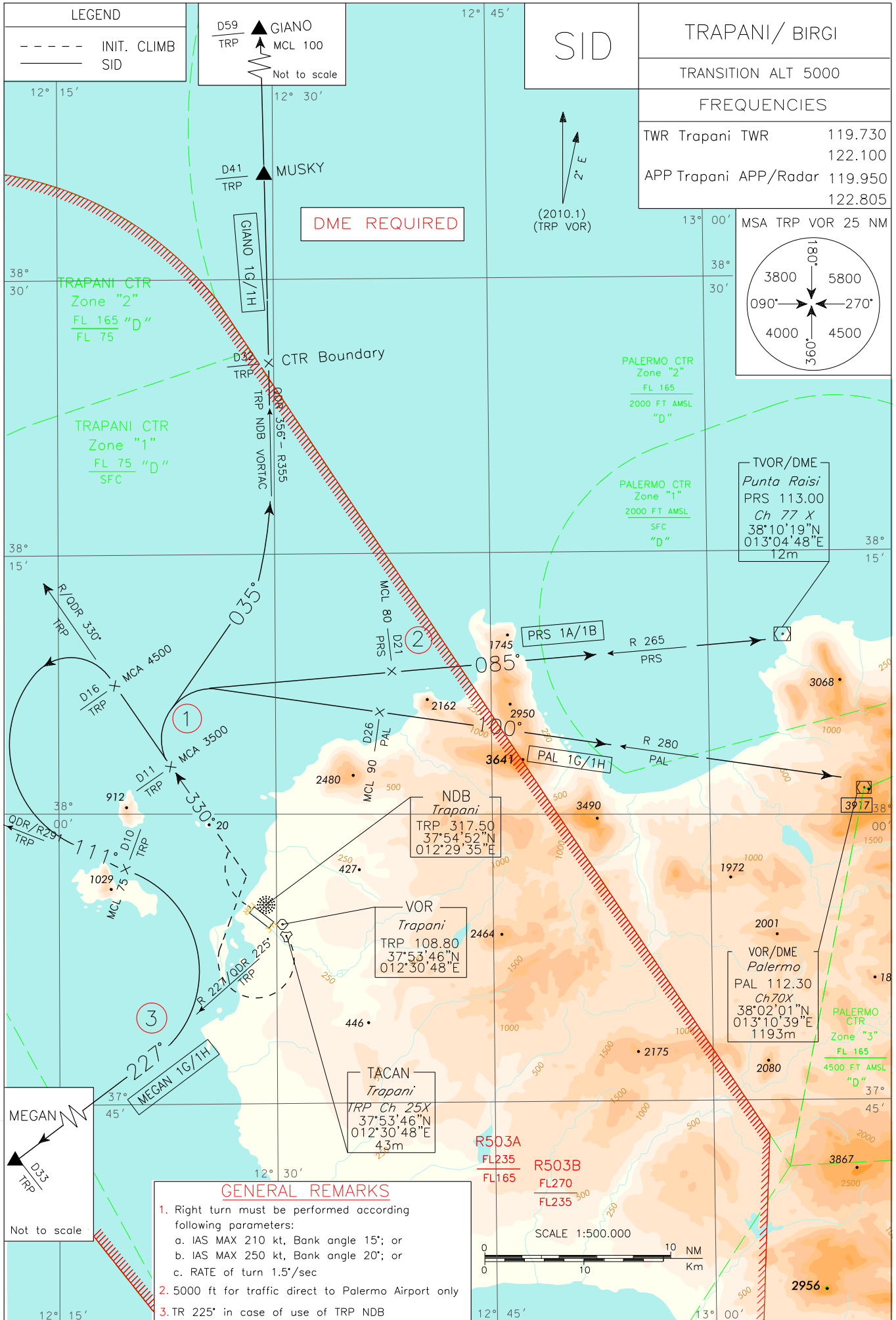
Turns after take-off shall be executed according to the following parameters:

- a. IAS MAX 210 kt, bank 15°, or
- b. IAS MAX 250 kt, bank 20°, or
- c. rate of turn 1.5°/sec.

Initial climb gradient doesn't take into account close-in obstacles lower than 60M (200ft), MOC included, above DER elevation (see ICAO obstacle charts and NOTAMs in force).

Intenzionalmente bianca

*Intentionally left blank*



**DESCRIZIONE DELLE SID**

Eseguita la procedura di salita iniziale:

**GIANO 1G/1H**

Proseguire su QDR/RDL 330 TRP NDB/VOR (TR 330°) fino a 11 NM TRP TACAN, quindi virare a destra su TR 035° fino ad intercettare e seguire RDL 355 TRP VOR (o QDR 356° TRP NDB) per il punto GIANO (RDL 355/59 NM TRP VORTAC).

MCA/MCL: QDR/RDL 330/11 NM TRP NDB/VORTAC 3500 FT; GIANO FL 100

**PAL 1G/1H**

Proseguire su QDR/RDL 330 TRP NDB/VOR (TR 330°) fino a 11 NM TRP TACAN, quindi virare a destra fino ad intercettare e seguire RDL 280 PAL VOR (TR 100°) per PAL VOR.

MCA/MCL: QDR/RDL 330/11 NM TRP NDB/VORTAC 3500 FT; RDL 280/26 NM PAL VOR/DME FL 90

**PRS 1A/1B**

Proseguire su QDR/RDL 330 TRP NDB/VOR (TR 330°) fino a 11 NM TRP TACAN, quindi virare a destra fino ad intercettare e seguire RDL 265 PRS VOR (TR 085°) per PRS VOR.

MCA/MCL: QDR/RDL 330/11 NM TRP NDB/VORTAC 3500 FT; RDL 265/21 NM PRS VOR/DME FL 80 (5000 ft per il solo traffico diretto a Palermo aeroporto/for traffic direct to Palermo airport only)

**MEGAN 1G/1H**

Proseguire su QDR/RDL 330 TRP NDB/VOR (TR 330°) fino a 16 NM TRP TACAN, quindi virare a sinistra fino ad intercettare e seguire QDR/RDL 291 TRP NDB/VOR (TR 111°).

Sul punto QDR/RDL 291/10 NM TRP NDB/VORTAC, virare a destra fino ad intercettare e seguire RDL 227 TRP VORTAC (o QDR 225° TRP NDB) diretti al punto MEGAN (RDL 227/33 NM TRP VORTAC).

MCA/MCL: QDR/RDL 330/11 NM TRP NDB/VORTAC 3500 FT; QDR/RDL 330/16 NM TRP NDB/VORTAC 4500 FT; QDR/RDL 291/10 NM TRP NDB/VORTAC FL 75.

**SID DESCRIPTION**

Initial climb procedure executed:

**GIANO 1G/1H**

Proceed on QDR/RDL 330 TRP NDB/VOR (TR 330°) until 11 NM TRP TACAN, then turn right on TR 035° until joining RDL 355 TRP VOR (or QDR 356° TRP NDB) bound to GIANO (RDL 355/59 NM TRP VORTAC).

**PAL 1G/1H**

Proceed on QDR/RDL 330 TRP NDB/VOR (TR 330°) until 11 NM TRP TACAN, then turn right until joining RDL 280 PAL VOR (TR 100°) bound to PAL VOR.

**PRS 1A/1B**

Proceed on QDR/RDL 330 TRP NDB/VOR (TR 330°) until 11 NM TRP TACAN, then turn right until joining RDL 265 PRS VOR (TR 085°) bound to PRS VOR.

**MEGAN 1G/1H**

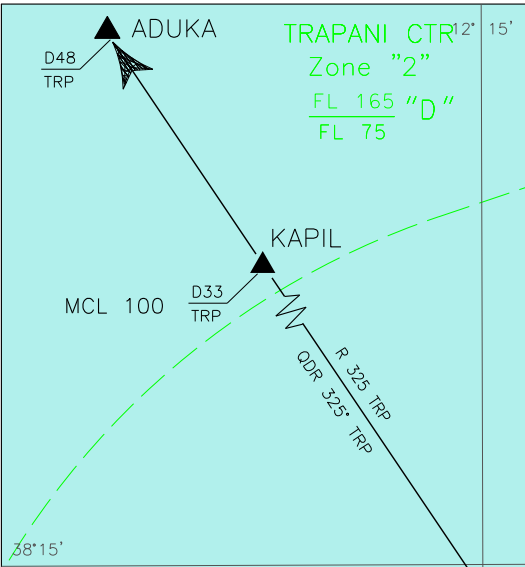
Proceed on QDR/RDL 330 TRP NDB/VOR (TR 330°) until 16 NM TRP TACAN, then turn left until joining QDR/RDL 291 TRP NDB/VOR (TR 111°).

Crossing point QDR/RDL 291/10 NM TRP NDB/VORTAC, turn right until joining RDL 227 TRP VORTAC (or QDR 225° TRP NDB) bound to MEGAN (RDL 227/33 NM TRP VORTAC).

Intenzionalmente bianca

*Intentionally left blank*

LEGEND	—	SID	TRAPANI/ BIRGI
	- - -	INIT. CLIMB	



R503A  
FL235  
FL165

R503B  
FL270  
FL235

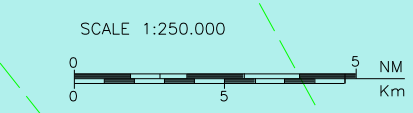
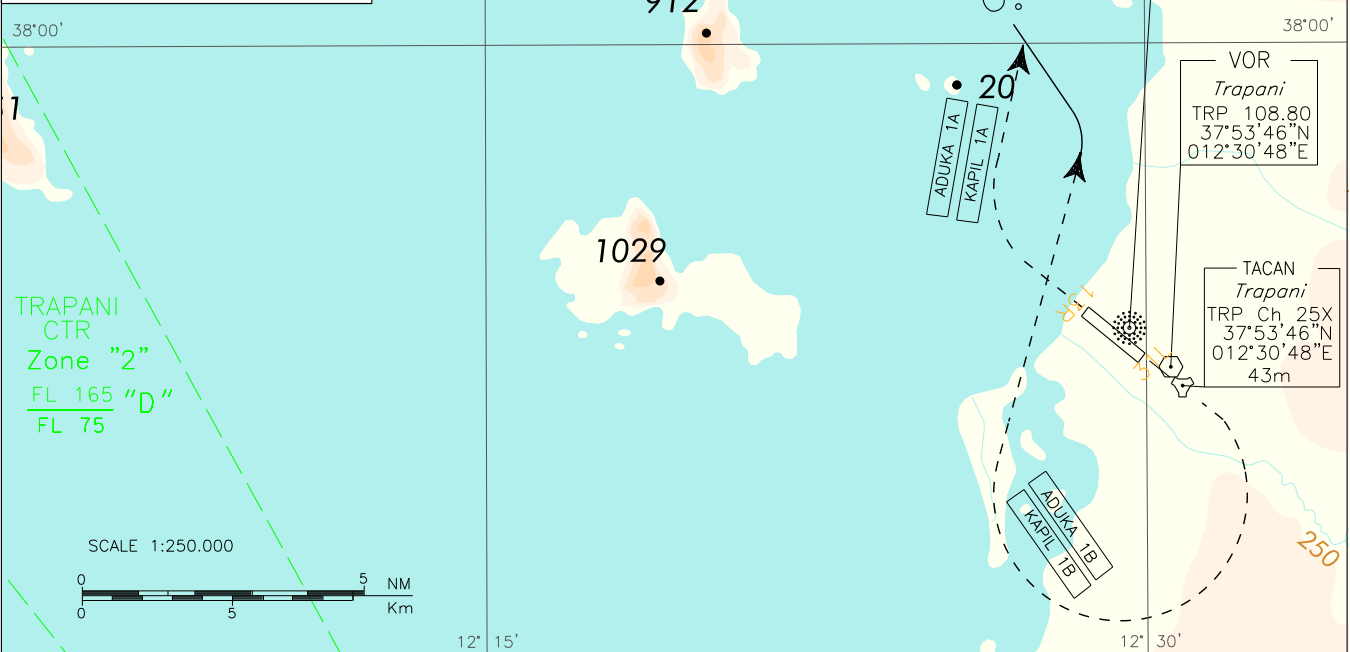
(2010.1)  
(TRP VOR)

FREQUENCIES

TWR Trapani TWR	119.730 122.100
APP Trapani APP/Radar	119.950 122.805

MSA TRP VOR 25NM

TRAPANI CTR  
Zone "1"  
FL 75 "D"  
SFC



**DESCRIZIONE DELLA SID**

Eseguita la procedura di salita iniziale :

**KAPIL 1A/1B**

Procedere su RDL/QDR 325 TRP VORTAC/NDB (TR 325°) per il punto KAPIL (RDL 325/33 NM TRP VORTAC).

**ADUKA 1A/1B**

Procedere su RDL/QDR 325 TRP VORTAC/NDB (TR 325°) per il punto KAPIL (RDL 325/33 NM TRP VORTAC), quindi per il punto ADUKA.

**SID DESCRIPTION**

Initial climb procedure executed :

**KAPIL 1A/1B**

Proceed on RDL/QDR 325 TRP VORTAC/NDB (TR 325°) bound to KAPIL (RDL 325/33 NM TRP VORTAC).

MCL: KAPIL FL 100

**ADUKA 1A/1B**

Proceed on RDL/QDR 325 TRP VORTAC/NDB (TR 325°) bound to KAPIL (RDL 325/33 NM TRP VORTAC), than for ADUKA.

MCL: KAPIL FL 100



Intenzionalmente bianca

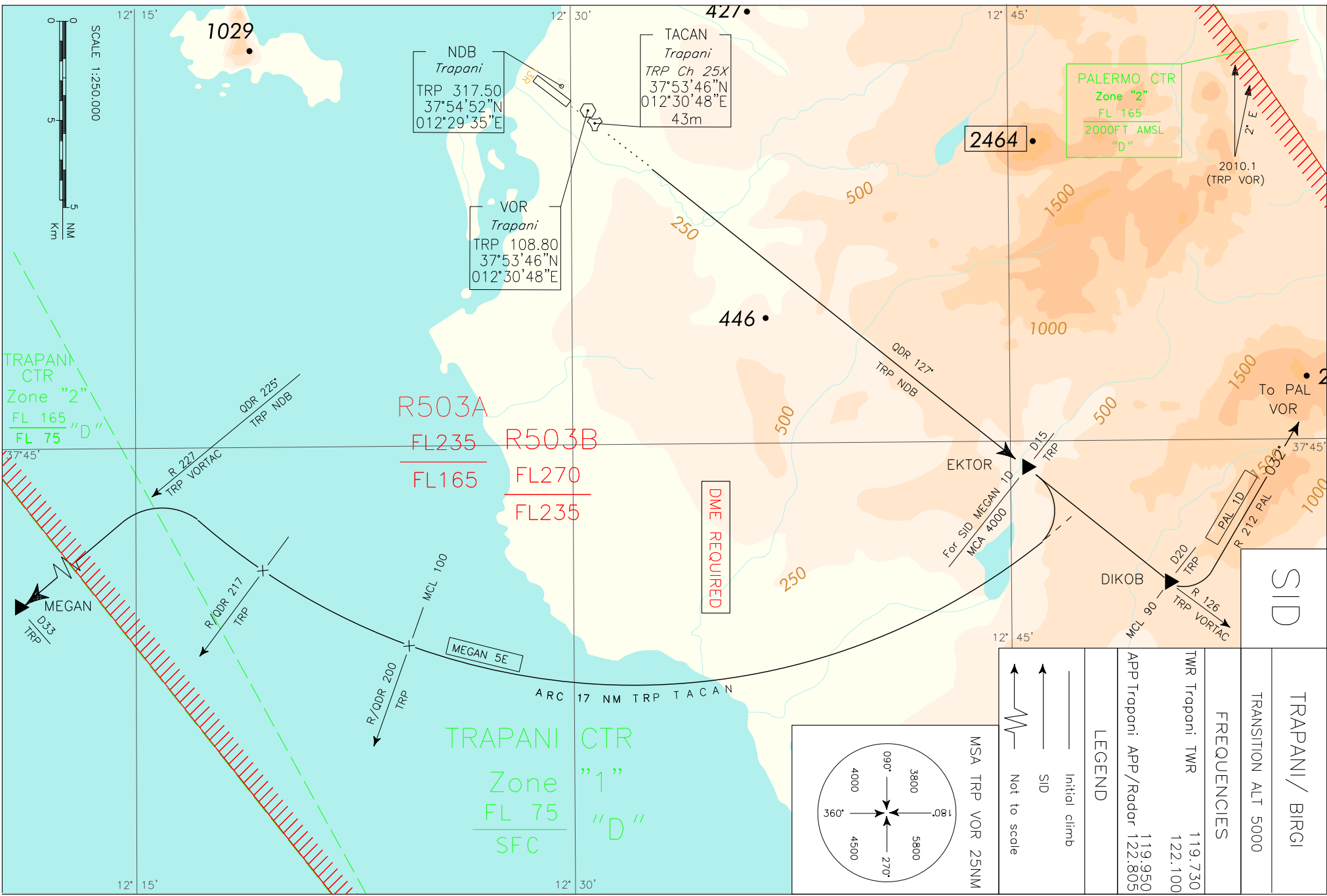
*Intentionally left blank*

CHANGE: SID "MEGAN 1D" RENAMED AS "MEGAN 5E"

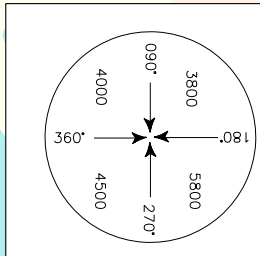
ENAV - Roma

Edited by AM - CIGA

AIRAC effective date 23 MAR 2023 (A2/23)



DME REQUIRED



LEGEND	
	Initial climb
	SID
	Not to scale

FREQUENCIES	
TWR Trapani	119.730
TWR Trapani	122.100
APP Trapani	119.950
APP Trapani	122.805

TRAPANI/ BIRGI	
TRANSITION ALT 5000	

SID	
TRAPANI/ BIRGI	
TRANSITION ALT 5000	

AD 2 LICIT 6-13

AD 2 LICIT 6-13

**DESCRIZIONE DELLE SID**

Eseguita la procedura di salita iniziale:

**MEGAN 5E**

Proseguire su RDL 126 TRP VOR (QDR 127° TRP NDB) fino al punto EKTOR, quindi virare a destra fino ad intercettare e seguire ARC 17 NM TRP TACAN. Attraversando QDR/RDL 217 TRP NDB/VOR virare a sinistra fino ad intercettare e seguire RDL 227 TRP VOR (QDR 225° TRP NDB) per il punto MEGAN (RDL 227/33 NM TRP VORTAC).

MCA/MCL: EKTOR 4000 FT; INT ARC 17 NM TRP TACAN / QDR/RDL 200 TRP NDB/VOR FL 100

**PAL 1D**

Proseguire su RDL 126 TRP VOR (QDR 127° TRP NDB) fino al punto DIKOB (RDL 126/20NM TRP VORTAC), quindi virare a sinistra fino ad intercettare e seguire RDL 212 PAL VOR (TR 032°) diretti a PAL VOR.

MCL: DIKOB FL 90.

**SIDs DESCRIPTION**

Initial climb executed:

**MEGAN 5E**

Proceed on RDL 126 TRP VOR (QDR 127° TRP NDB) until EKTOR, then turn right until joining ARC 17 NM TRP TACAN. Crossing QDR/RDL 217 TRP NDB/VOR turn left until joining RDL 227 TRP VOR (QDR 225° TRP NDB) bound to MEGAN (RDL 227/33 NM TRP VORTAC).

**PAL 1D**

Proceed on RDL 126 TRP VOR (QDR 127° TRP NDB) until DIKOB (RDL 126/20NM TRP VORTAC), then turn left until joining RDL 212 PAL VOR (TR 032°) bound to PAL VOR.

Intenzionalmente bianca

*Intentionally left blank*