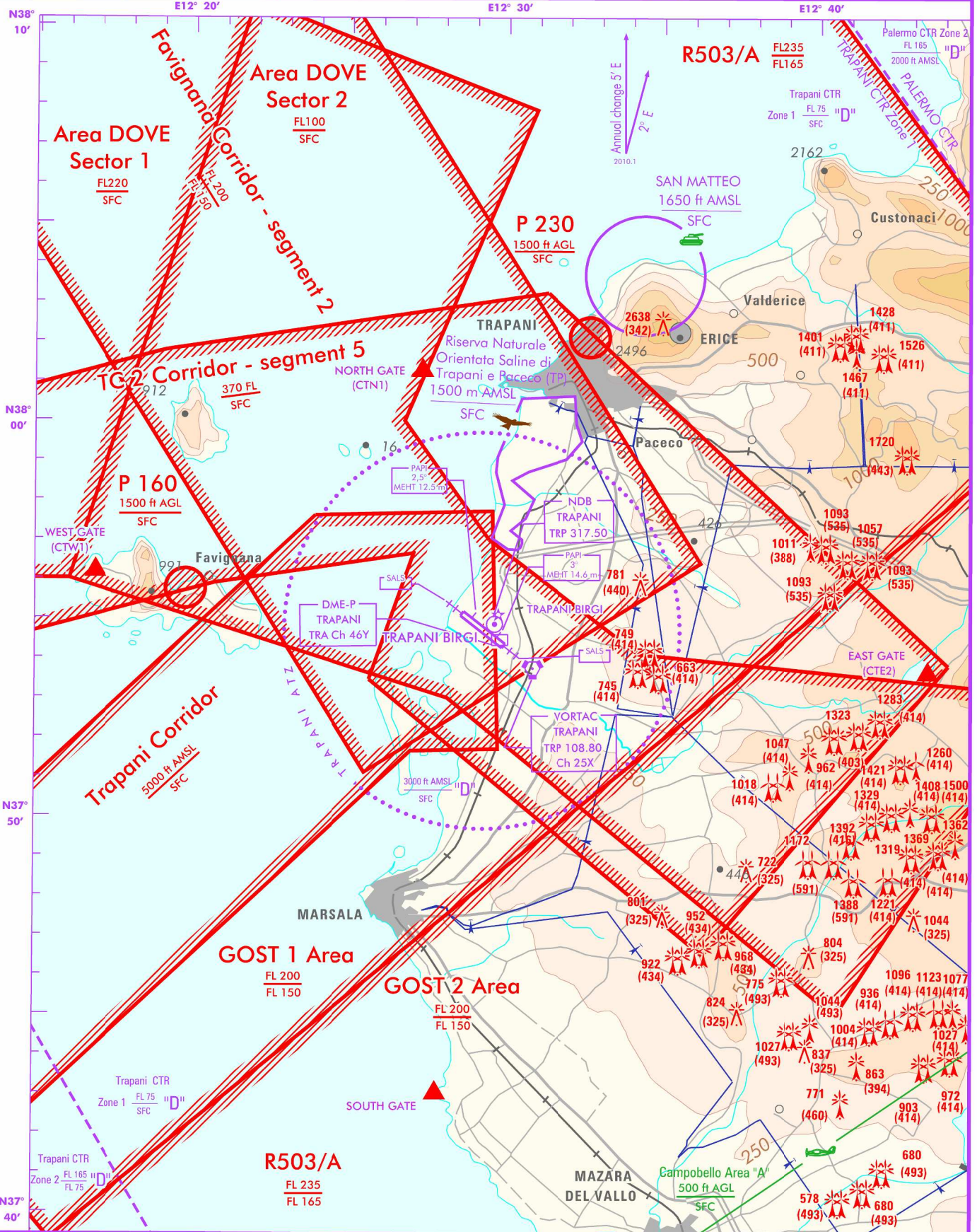
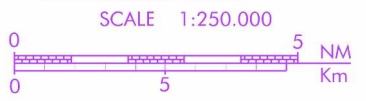


CHANGE: AD ELEVATION UPDATED

F I S	Roma Info	134.125
APP	Trapani Approach	{ 119.950 122.805
TWR	Trapani Tower	{ 119.730 122.100

AD ELEV	26
L I C T	

# TRAPANI / BIRGI



AIRSPACE CLASSIFICATION (See AIP-Italia ENR 1.4)

TRANSITION ALT 5000 ft

Bearings are magnetic.

ELEV AND ALT IN FT  
IF NOT OTHERWISE INDICATED

REMARK:  
TRP DME DISTANCES NOT  
ACCORDING ICAO STANDARD

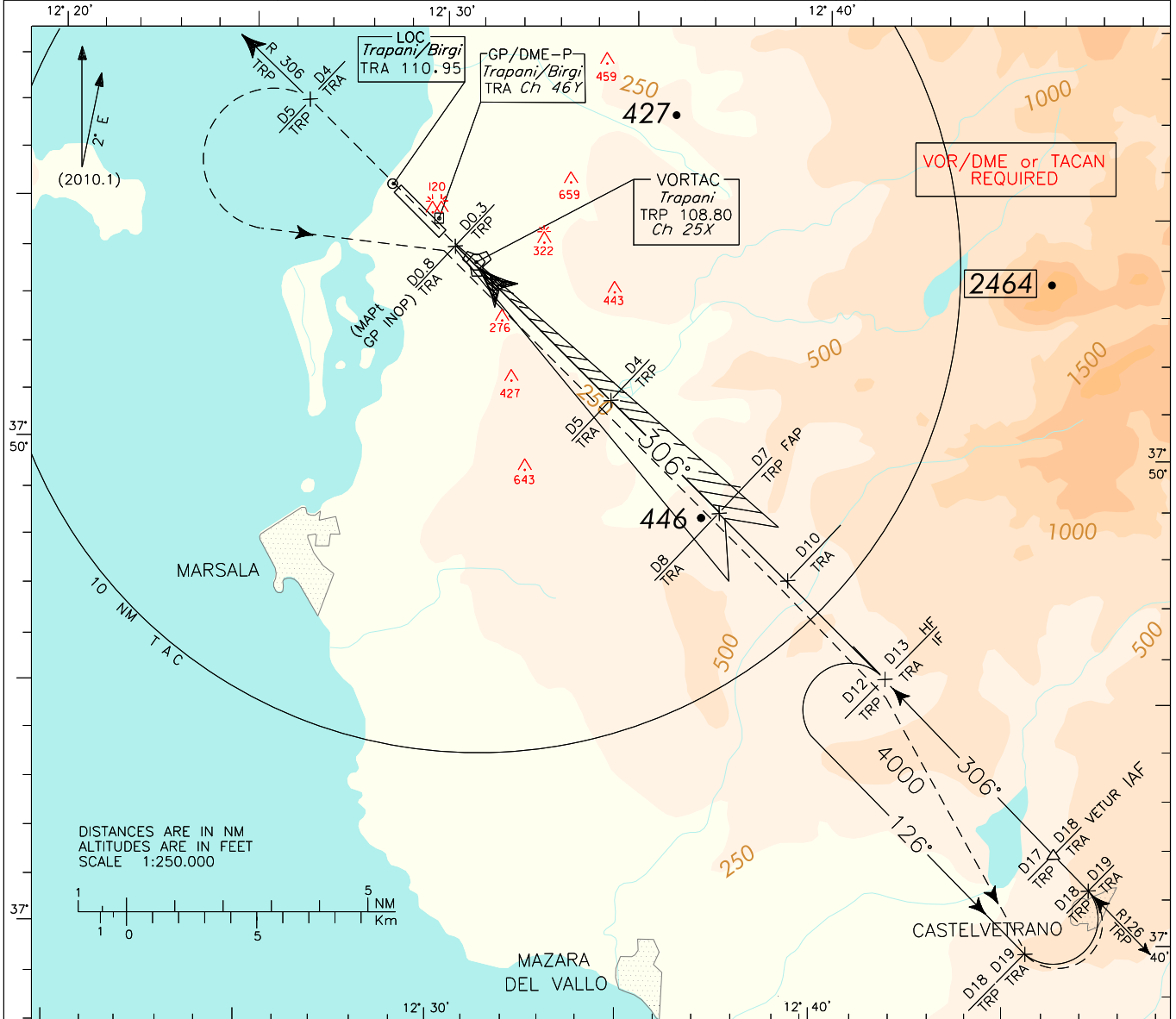
APP Trapani APP/Radar 119.950 122.805  
TWR Trapani TWR 119.730 122.100

AD ELEV  
26

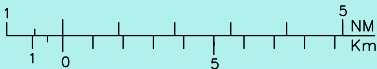
L I C I T  
TRAPANI/BIRGI  
ILS or LOC-Z  
(CAT. A/B) RWY 31L

DOC.8168-ED.3-1986

CHANGE: AD ELEVATION UPDATED

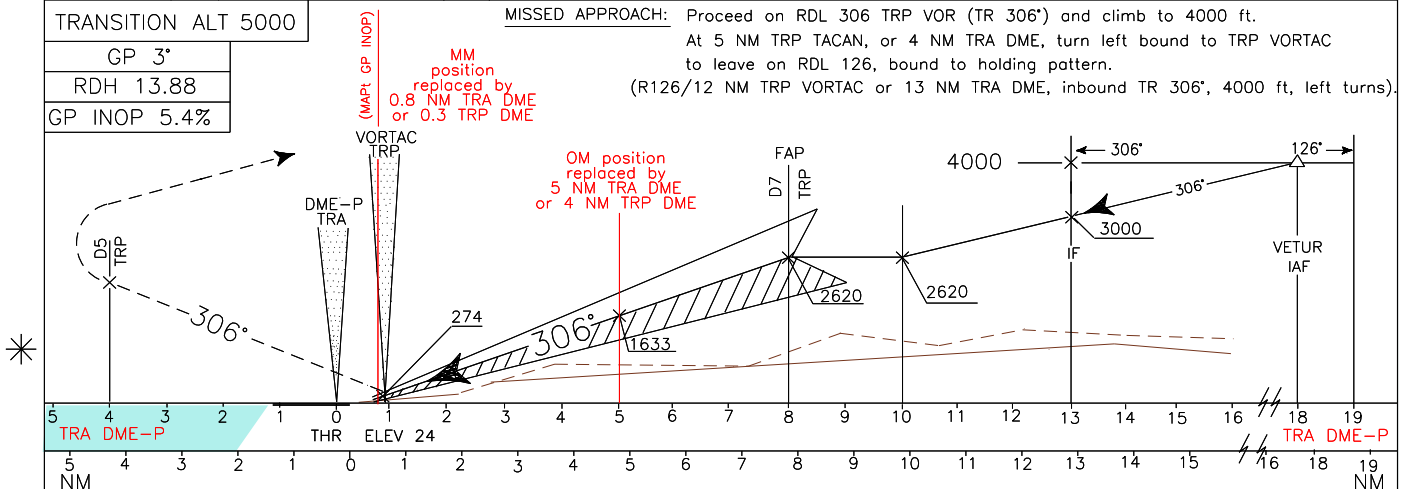


DISTANCES ARE IN NM  
ALTITUDES ARE IN FEET  
SCALE 1:250.000



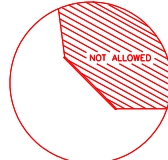
TRANSITION ALT 5000	
GP 3°	
RDH 13.88	
GP INOP 5.4%	

MISSED APPROACH: Proceed on RDL 306 TRP VOR (TR 306°) and climb to 4000 ft.  
At 5 NM TRP TACAN, or 4 NM TRA DME, turn left bound to TRP VORTAC  
to leave on RDL 126, bound to holding pattern.  
(R126/12 NM TRP VORTAC or 13 NM TRA DME, inbound TR 306°, 4000 ft, left turns).

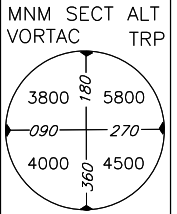


OCA (OCH)		A	B	C	D
STRAIGHT IN APPROACH	ILS	239 (215)	251 (227)		
	GP INOP	640 (620)			
CIRCLING (1)		640 (620)			

(1) Circling South/South West of runway only.



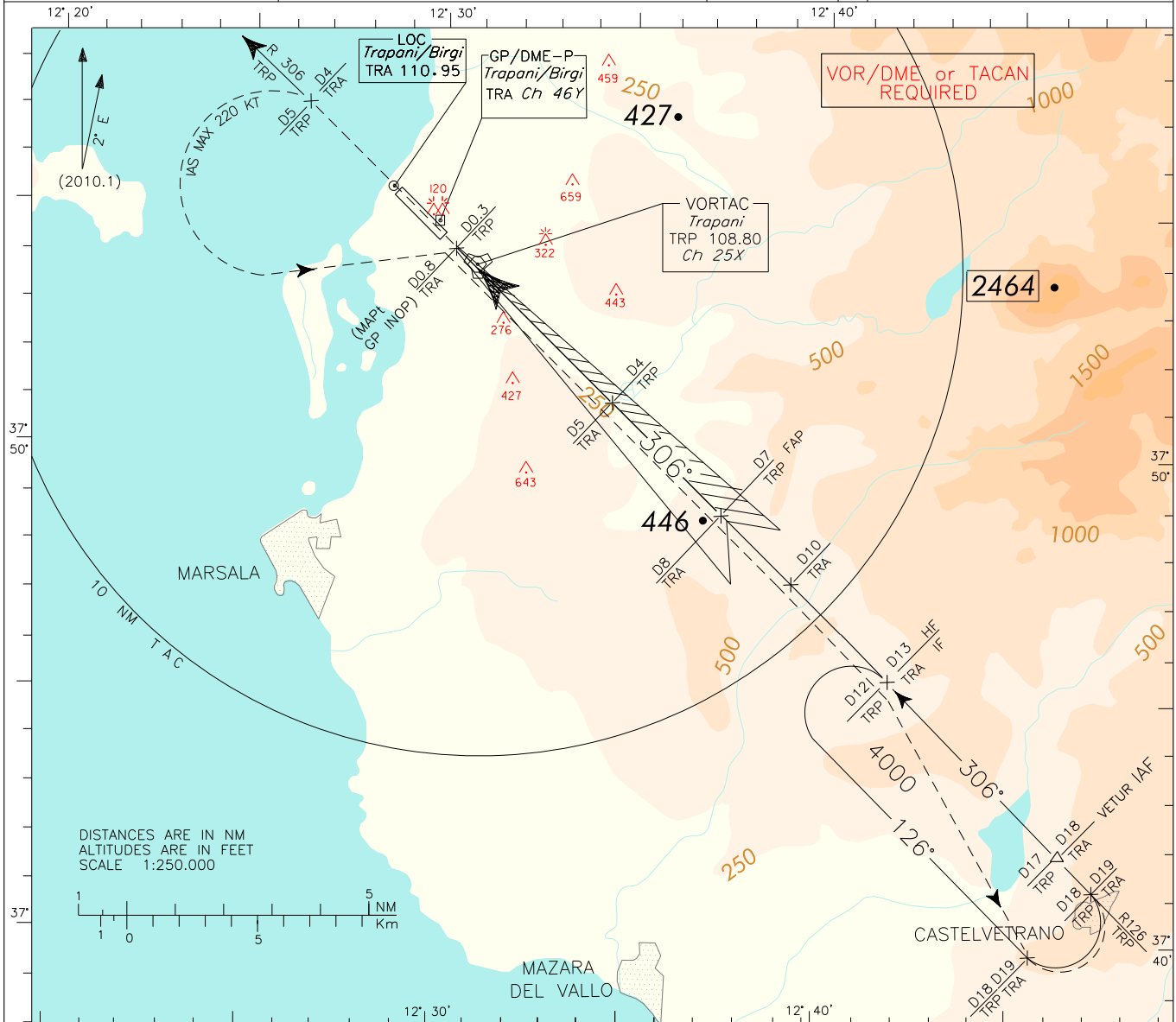
GS	FT PER MIN	DME TRA	ALT (HGT)
70	380	8	2620 (2600)
90	490	7	2290 (2270)
110	600	6	1970 (1950)
130	710	5	1640 (1620)
150	820	4	1320 (1300)
170	930	3	990 (970)
190	1040	2	670 (650)
210	1150	1.9	640 (620)



REMARK: TRP DME DISTANCES NOT ACCORDING ICAO STANDARD	APP	Trapani APP/Radar	119.950	122.805	AD ELEV	26	L I C T	TRAPANI/BIRGI ILS or LOC-Z (CAT. C/D) RWY 31L
	TWR	Trapani TWR	119.730	122.100				

DOC.8168-ED.3-1986

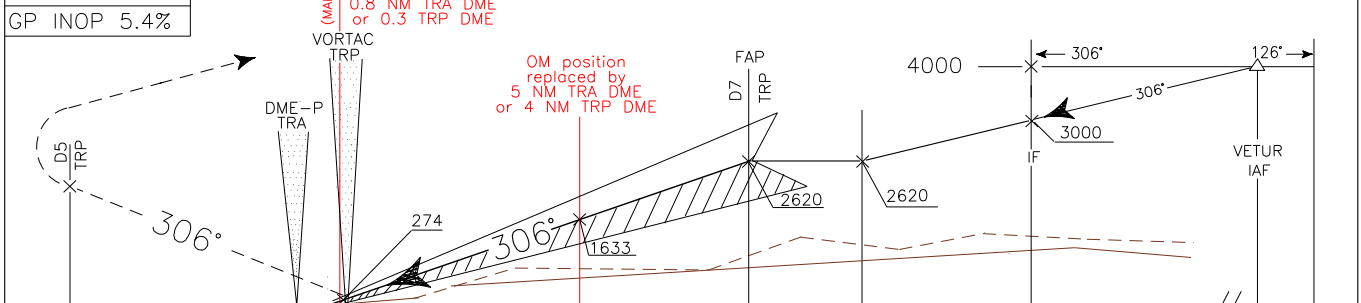
CHANGE: AD ELEVATION UPDATED



**TRANSITION ALT 5000**

GP 3°  
RDH 13.88  
GP INOP 5.4%

**MISSED APPROACH:** Proceed on RDL 306 TRP VOR (TR 306°) and climb to 4000 ft. At 5 NM TRP TACAN, or 4 NM TRA DME, turn left (IAS MAX 220 kt) to join and follow RDL 126 TRP VOR (TR126°) to holding pattern.  
(R126/12 NM TRP VORTAC or 13 NM TRA DME, inbound TR 306°, 4000 ft, left turns).



TRA DME-P	5	4	3	2	1	0	1	2	3	4	5	6	7	8	9	10	11	12	13	14	15	16	17	18	19	TRA DME-P
						THR	ELEV 24																			

STRAIGHT IN APPROACH	OCA (OCH)				(1) Circling South/South West of runway only.	GS	FT PER MIN	DME TRA	ALT (HGT)	MNM SECT ALT VORTAC	TRP
	A	B	C	D							
ILS			259 (235)	270 (246)		70	380	7	2290 (2270)		
GP INOP			640 (620)			90	490	6	1970 (1950)		
						110	600	5	1640 (1620)		
						130	710	4	1320 (1300)		
						150	820	3	990 (970)		
CIRCLING (1)			1040 (1020)		170	930	2	670 (650)			
					190	1040	1.9	640 (620)			
					210	1150					

REMARK:  
TRP DME DISTANCES NOT  
ACCORDING ICAO STANDARD

APP Trapani APP/Radar 119.950 122.805  
TWR Trapani TWR 119.730 122.100

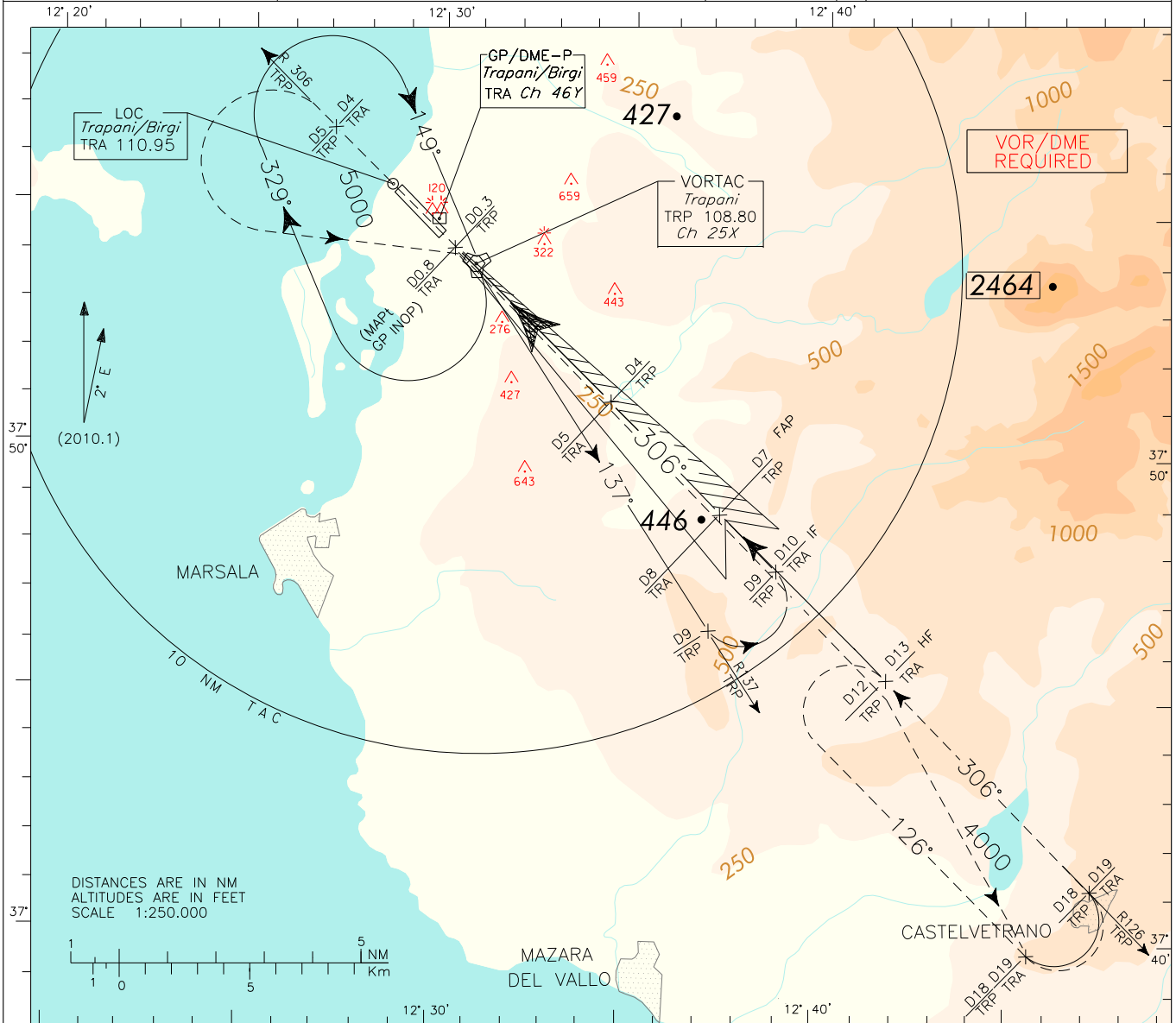
AD ELEV 26

L  
I  
C  
T

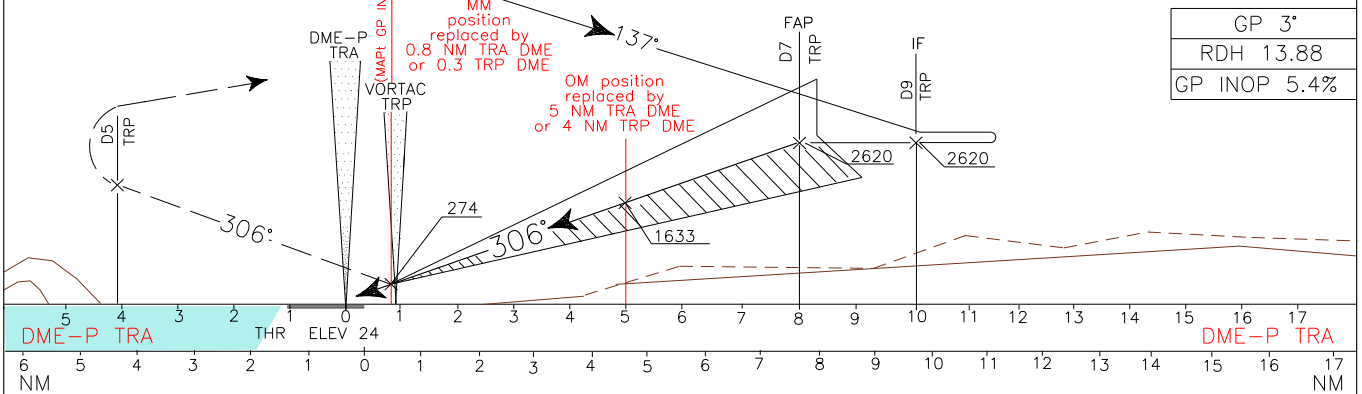
TRAPANI/BIRGI  
ILS or LOC-Y  
(CAT. A/B) RWY 31L

DOC.8168-ED.3-1986

CHANGE: AD ELEVATION UPDATED



TRANSITION ALT 5000 MISSED APPROACH: Proceed on RDL 306 TRP VOR (TR 306°) and climb to 4000 ft. At 5 NM TRP TACAN, or 4 NM TRA DME, turn left bound to TRP VORTAC to leave on RDL 126 to Missed Approach holding pattern. (R126/12 NM TRP VORTAC or 13 NM TRA DME, inbound TR 306°, 4000 ft, left turns)



OCA (OCH)		A	B	C	D	(1) Circling South/South West of runway only.	GS	FT PER MIN	DME TRA	ALT (HGT)	MNM SECT ALT VORTAC TRP
STRAIGHT IN APPROACH	ILS	239 (215)	251 (227)								
	GP INOP	640 (620)				7	2290 (2270)				
	CIRCLING (1)	640 (620)				6	1970 (1950)				
						5	1640 (1620)				
						4	1320 (1300)				
						3	990 (970)				
						2	670 (650)				
						1.9	640 (620)				
						1					
						0					

Remark: TRP DME distances not according ICAO standard

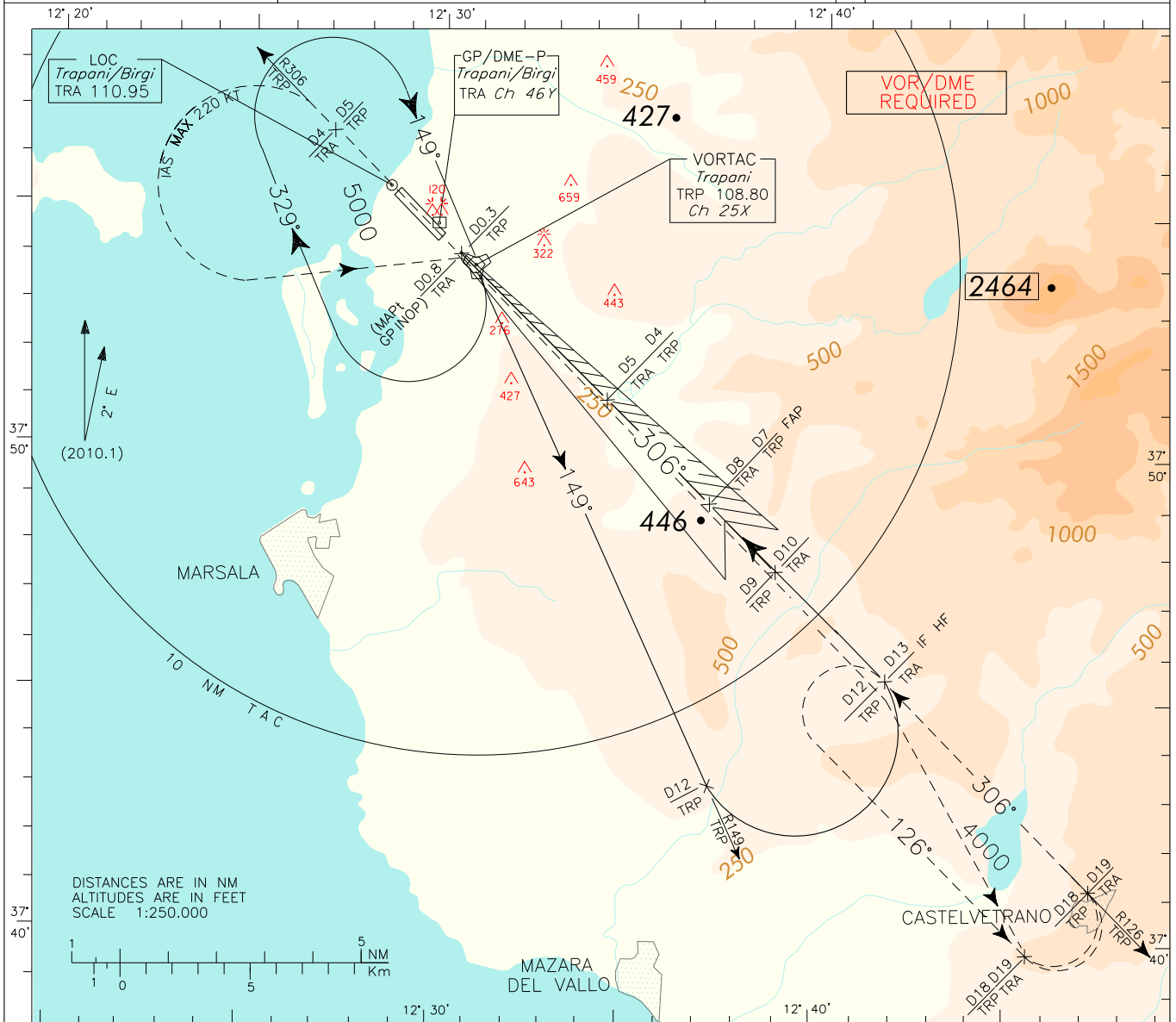
APP	Trapani APP/Radar	119.950	122.805
TWR	Trapani TWR	119.730	122.100

AD ELEV  
26

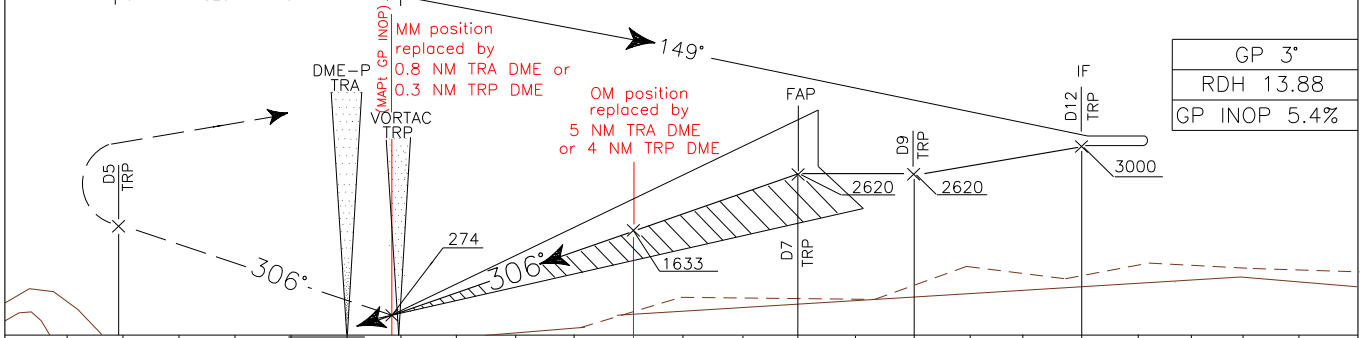
LICIT  
TRAPANI/BIRGI  
ILS or LOC-Y  
(CAT. C/D) RWY 31L

DOC.8168-ED.3-1986

CHANGE: AD ELEVATION UPDATED



TRANSITION ALT 5000 MISSED APPROACH: Proceed on RDL 306 TRP VOR (TR 306°) and climb to 4000 ft. At 5 NM TRP TACAN, or 4 NM TRA DME, turn left (IAS MAX 220 kt) to join and follow RDL 126 TRP VOR (TR 126°) bound to M.A. holding pattern (R126/12 NM TRP VORTAC or 13 NM TRA DME, inbound TR 306°, 4000 ft, left turns).

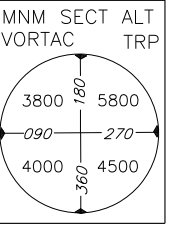


TRA DME-P	THR	ELEV 24	TRA DME-P																				
6	5	4	3	2	1	0	1	2	3	4	5	6	7	8	9	10	11	12	13	14	15	16	17
												NM											

STRAIGHT IN APPROACH	OCA (OCH)	A	B	C	D
	ILS			259 (235)	270 (246)
CIRCLING (1)	GP INOP			640 (620)	
				1040 (1020)	

(1) Circling South/South West of runway only.

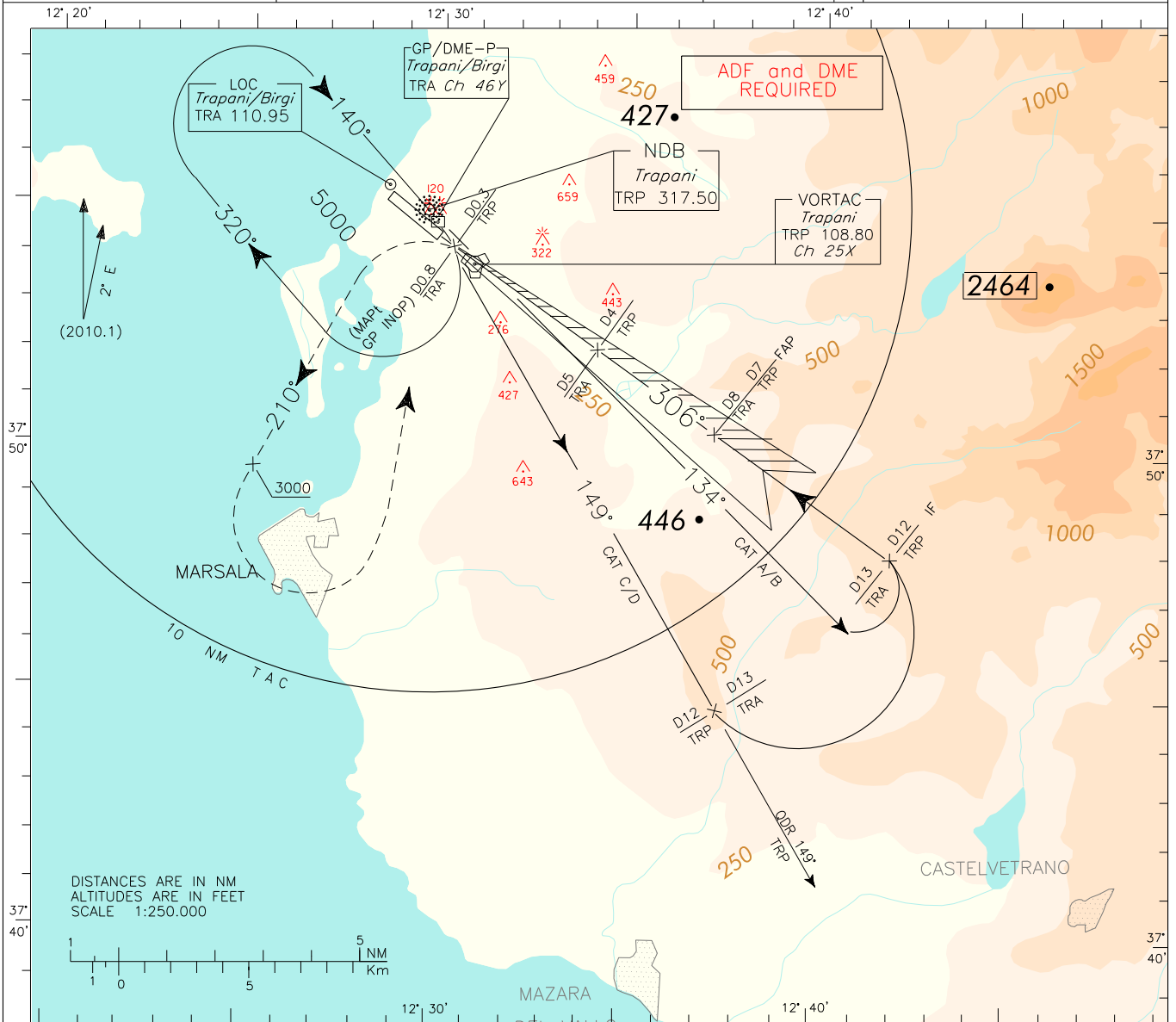
GS	FT PER MIN	DME TRA	ALT (HGT)	MNM SECT ALT
70	380	7	2290 (2270)	VORTAC
90	490	6	1970 (1950)	TRP
110	600	5	1640 (1620)	
130	710	4	1320 (1300)	
150	820	3	990 (970)	
170	930	2	670 (650)	
190	1040	1.9	640 (620)	
210	1150			



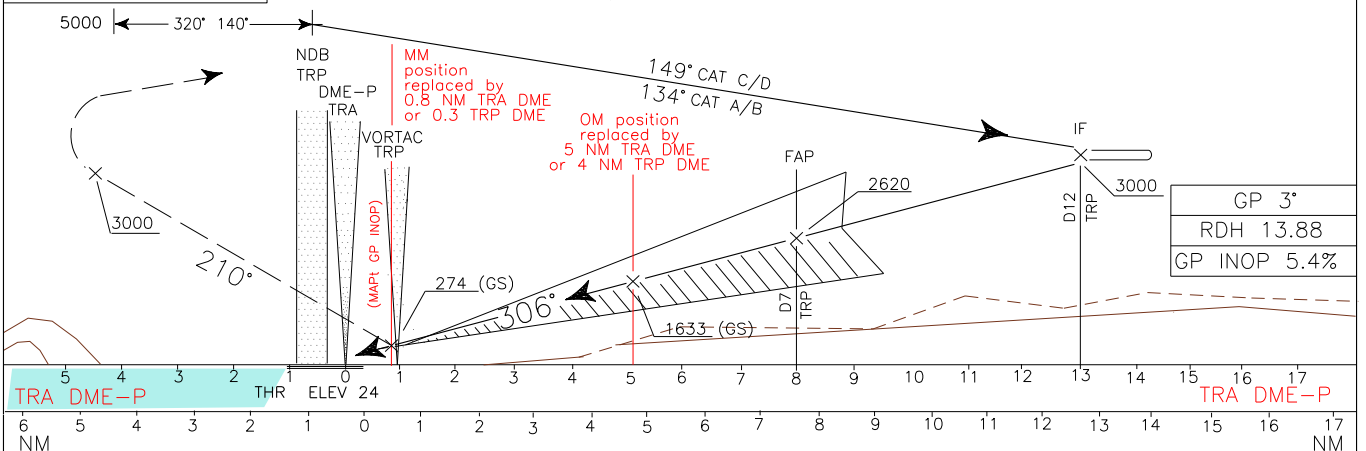
Remark: TRP DME distances not according ICAO standard	APP	Trapani APP/Radar	119.950	122.805	AD ELEV	LICIT	TRAPANI/BIRGI ILS or LOC-X RWY 31L
	TWR	Trapani TWR	119.730	122.100	26		

DOC.8168-ED.3-1986

CHANGE: AD ELEVATION UPDATED



TRANSITION ALT 5000 MISSED APPROACH: As soon as practicable, turn left on TR 210° climbing to 5000 ft. Passing 3000 ft, turn left bound to TRP NDB, to reach at 5000 ft. IAS MAX 250 kt.

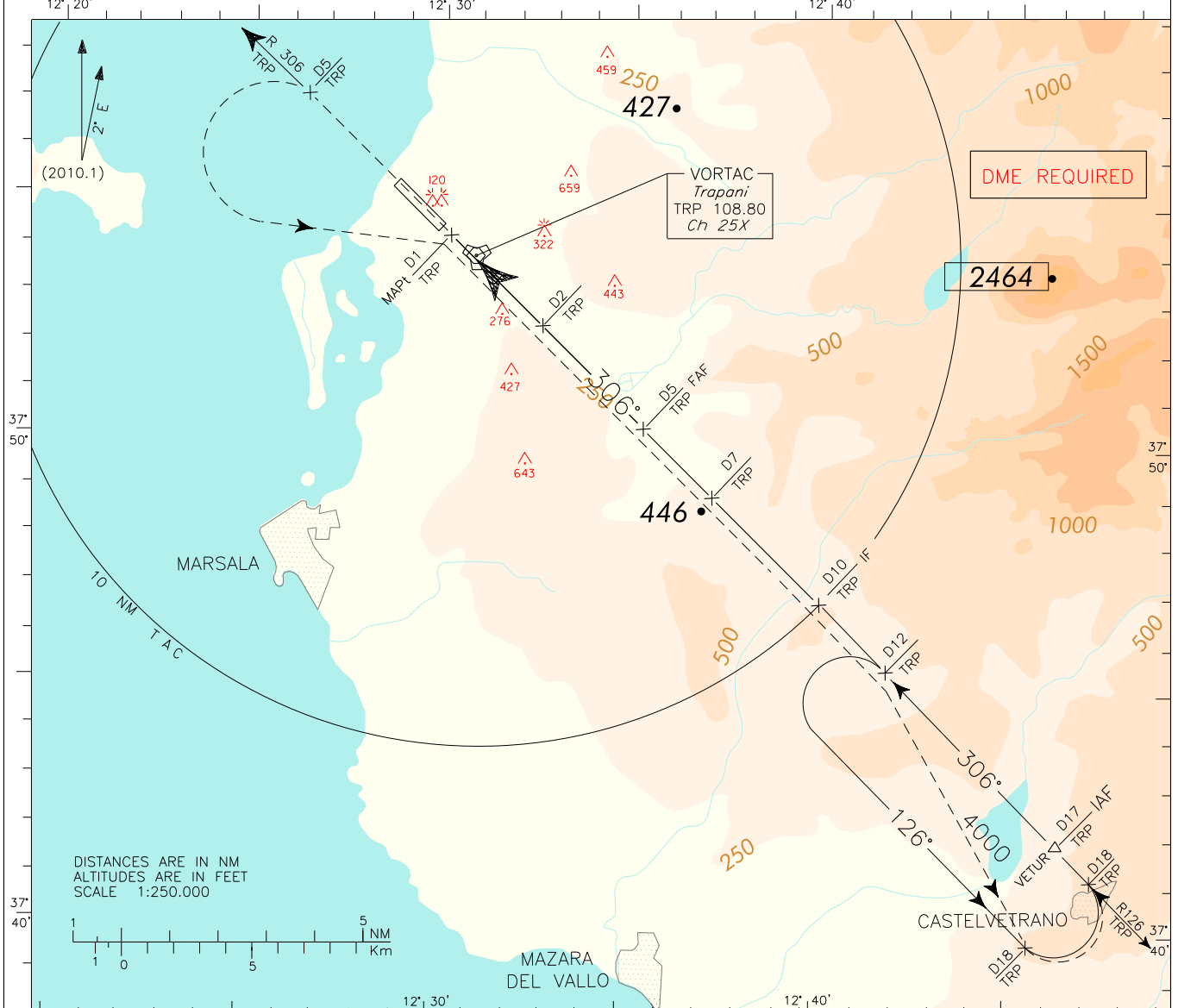


STRAIGHT IN APPROACH	OCA (OCH)				(1) Circling South/South West of runway only	FT PER MIN				MNM SECT ALT NDB TRP
	A	B	C	D		GS	DME TRA	ALT (HGT)		
ILS	239 (215)	251 (227)	259 (235)	270 (246)		8	2620 (2600)			
GP INOP	640 (620)					70	380		7 2290 (2270)	
CIRCLING (1)	640 (620) 1040 (1020)					90	490		6 1970 (1950)	
						110	600		5 1640 (1620)	
						130	710		4 1320 (1300)	
						150	820		3 990 (970)	
						170	930		2 670 (650)	
						190	1040		1.9 640 (620)	
						210	1150			

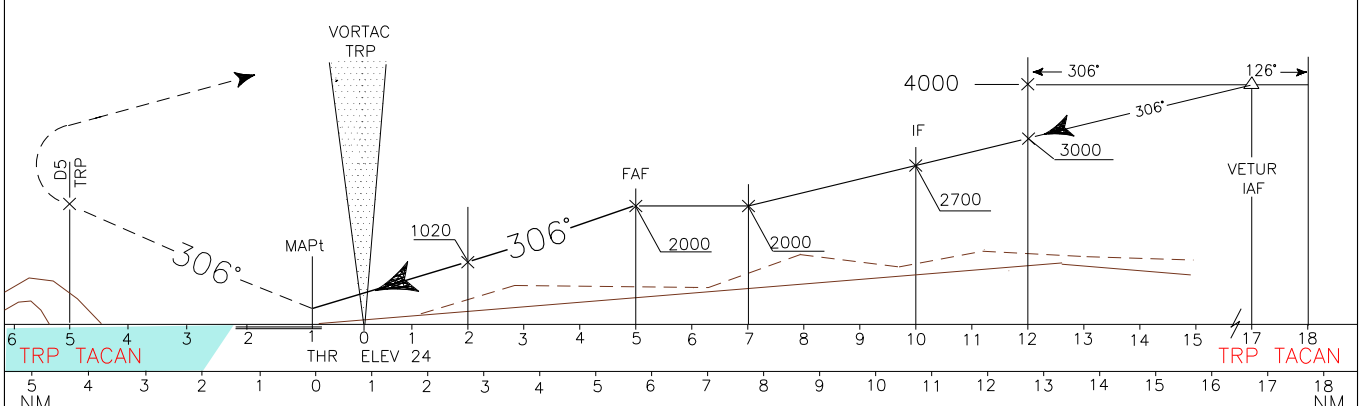
DOC.8168-ED.3-1986

CHANGE: AD ELEVATION UPDATED

APP	Trapani APP/Radar	119.950	122.805	AD ELEV	26	L I C I T	TRAPANI/ BIRGI VOR-Z (CAT. A/B) RWY 31L
TWR	Trapani TWR	119.730	122.100				



**TRANSITION ALT 5000** MISSED APPROACH: At 1 NM after TRP TACAN proceed on RDL 306 TRP VOR climb to 4000 ft. At 5 NM TRP TACAN turn left to TRP VORTAC to leave on RDL 126 direct to Missed Approach holding pattern. Hold on RDL 126 at 4000 ft between 12 NM and 18 NM TRP VORTAC; Inbound track 306°, left turn.



OCA (OCH)		A	B	C	D	(1) Circling South/South West of runway only. 	GS	PER MIN	DIST	ALT (HGT)	MNM SECT ALT TRP VOR 
STRAIGHT IN APPROACH	VOR+DME	640 (620)					70	380	5 DME	2000(1980)	
							90	490	4 DME	1670(1650)	
							110	600	3 DME	1350(1330)	
							130	710	2 DME	1020 (1000)	
CIRCLING (1)		640 (620)				150	820	1 DME	700 (680)		
						170	930	0.8DME	640 (620)		
						190	1040				
						210	1150				

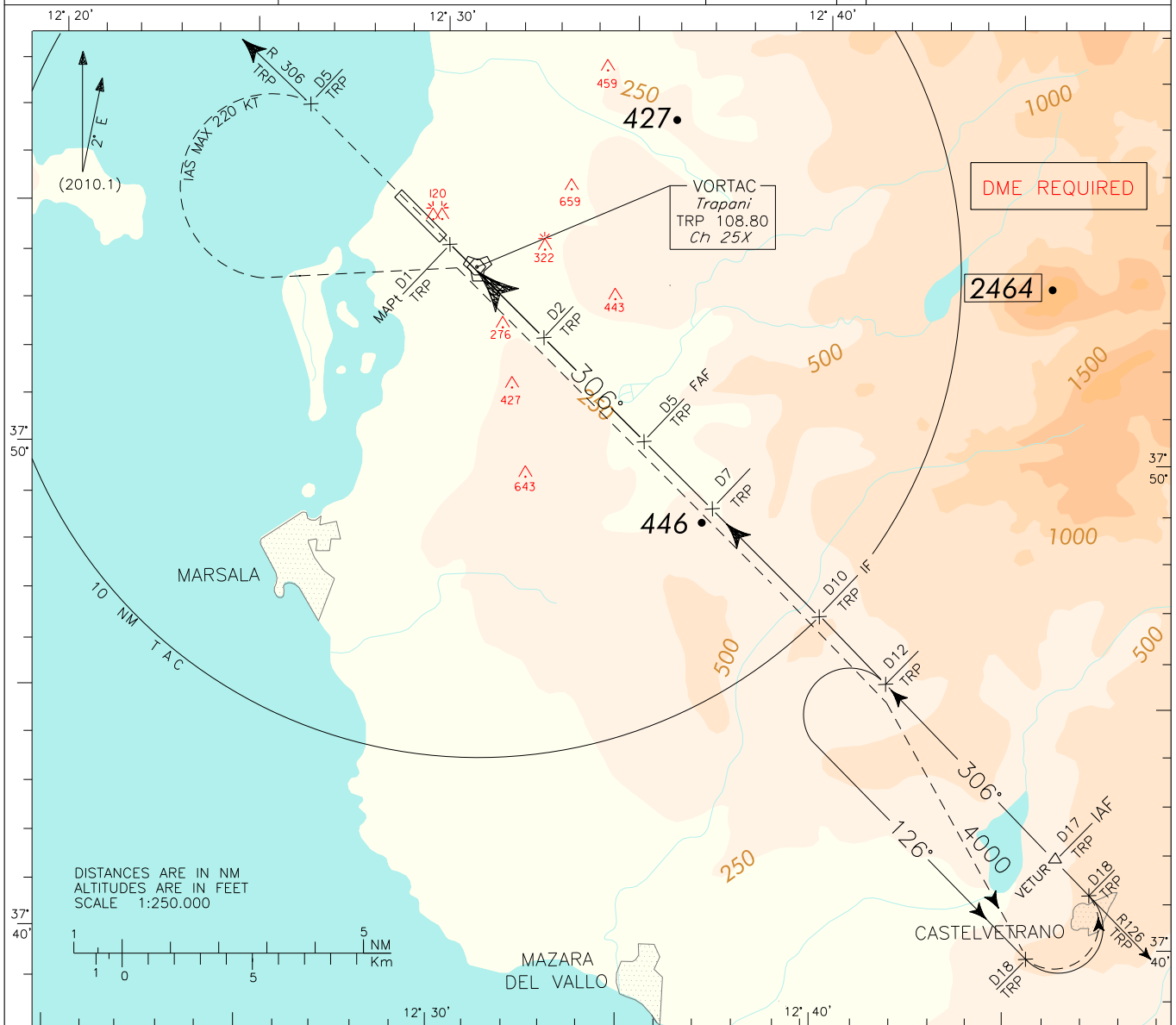
APP Trapani APP/Radar 119.950 122.805  
 TWR Trapani TWR 119.730 122.100

AD ELEV 26

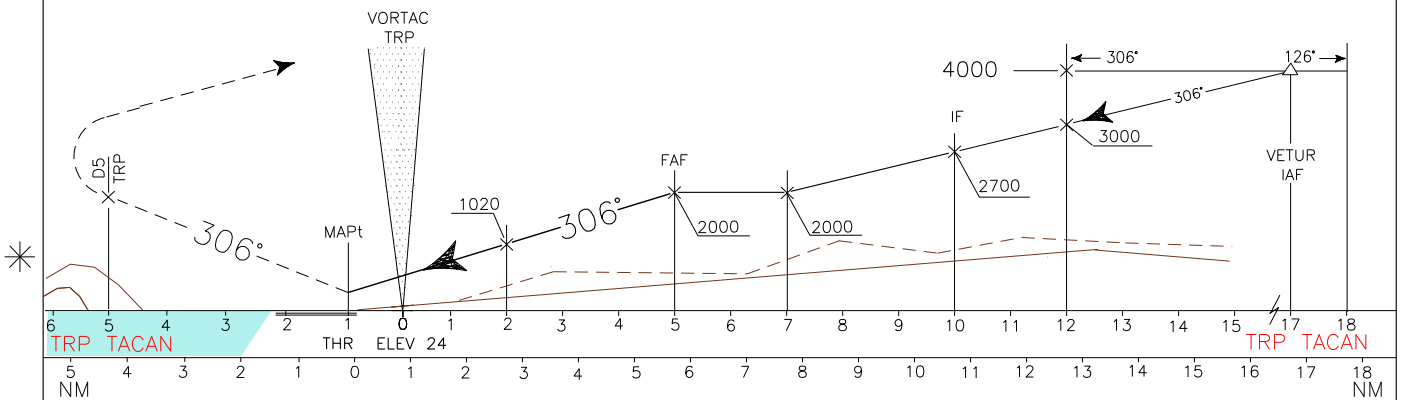
TRAPANI/ BIRGI  
 VOR-Z (CAT. C/D) RWY 31L

DOC.8168-ED.3-1986

CHANGE: AD ELEVATION UPDATED



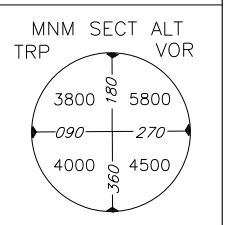
TRANSITION ALT 5000 MISSED APPROACH: At 1 NM after TRP TACAN proceed on RDL 306 TRP VOR climb to 4000 ft. At 5 NM TRP TACAN turn left to TRP VORTAC (IAS MAX 220 kt) to leave on RDL 126 direct to Missed Approach holding pattern. Hold on RDL 126 at 4000 ft between 12 NM and 18 NM TRP VORTAC; Inbound track 306°, left turn.



OCA (OCH)	A	B	C	D
STRAIGHT IN APPROACH	VOR		640 (620)	
CIRCLING (1)			1040 (1020)	

Circling South/South West of runway only. (1)

GS	PER MIN	DIST	ALT (HGT)
70	380	5 DME	2000(1980)
90	490	4 DME	1670(1650)
110	600	3 DME	1350(1330)
130	710	2 DME	1020(1000)
150	820	1 DME	700 (680)
170	930	0.8DME	640 (620)
190	1040		
210	1150		

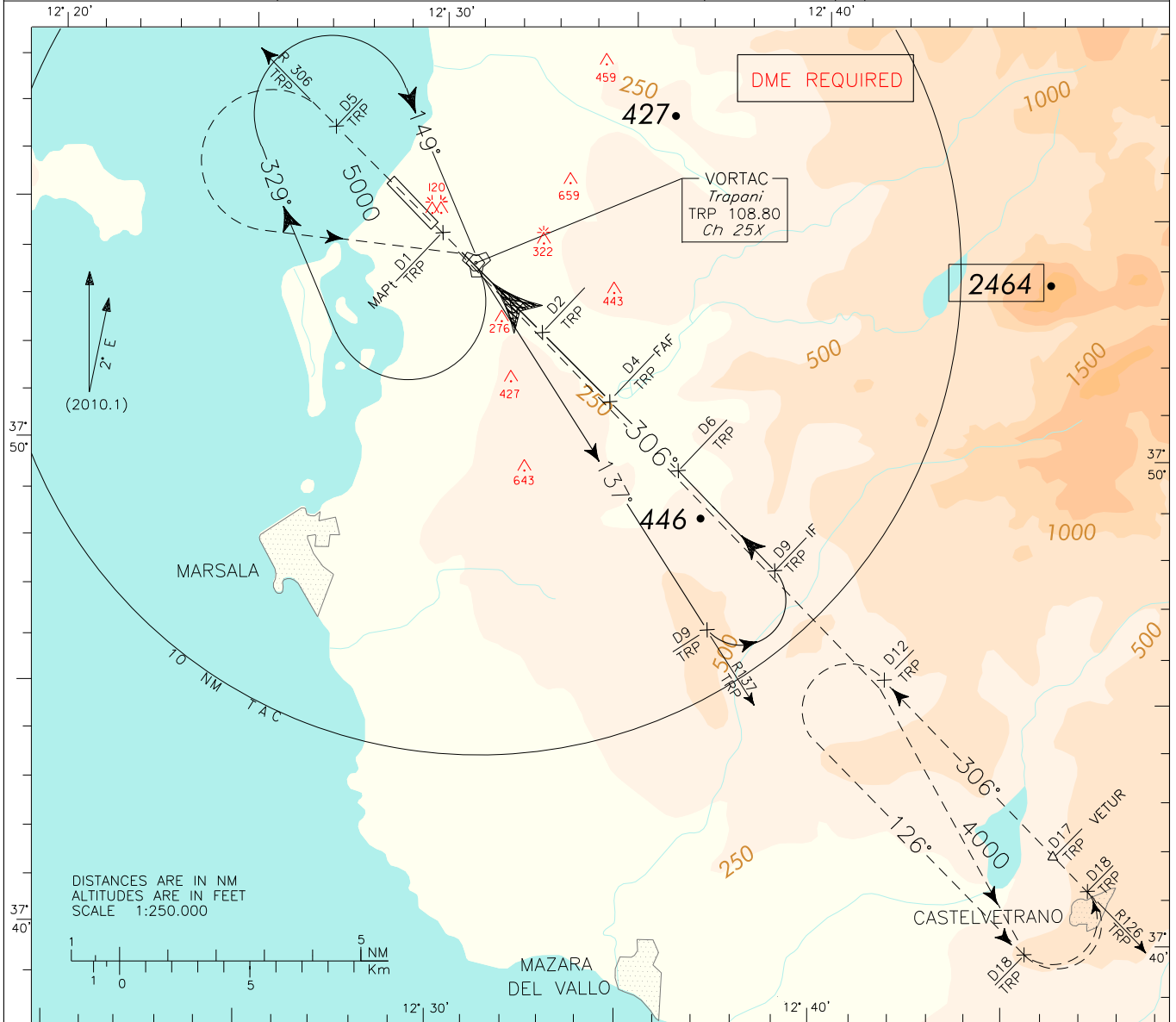




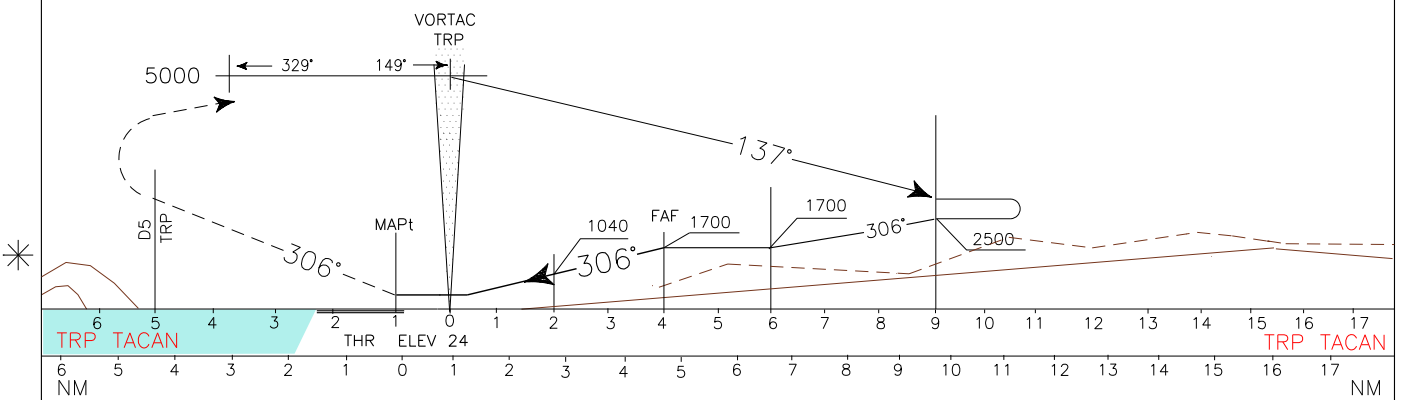
APP	Trapani APP/Radar	119.950	122.805	AD ELEV	26	L I C I T	TRAPANI/ BIRGI VOR-Y (CAT. A/B) RWY 31L
TWR	Trapani TWR	119.730	122.100				

DOC.8168-ED.3-1986

CHANGE: AD ELEVATION UPDATED



TRANSITION ALT 5000 MISSED APPROACH: At 1 NM after TRP TACAN proceed on RDL 306 TRP VOR climb to 4000 ft. At 5 NM TRP TACAN turn left to TRP VORTAC to leave on RDL 126 direct to Missed Approach holding pattern.  
Hold on RDL 126 at 4000 ft between 12 NM and 18 NM TRP VORTAC; Inbound track 306°, left turn.

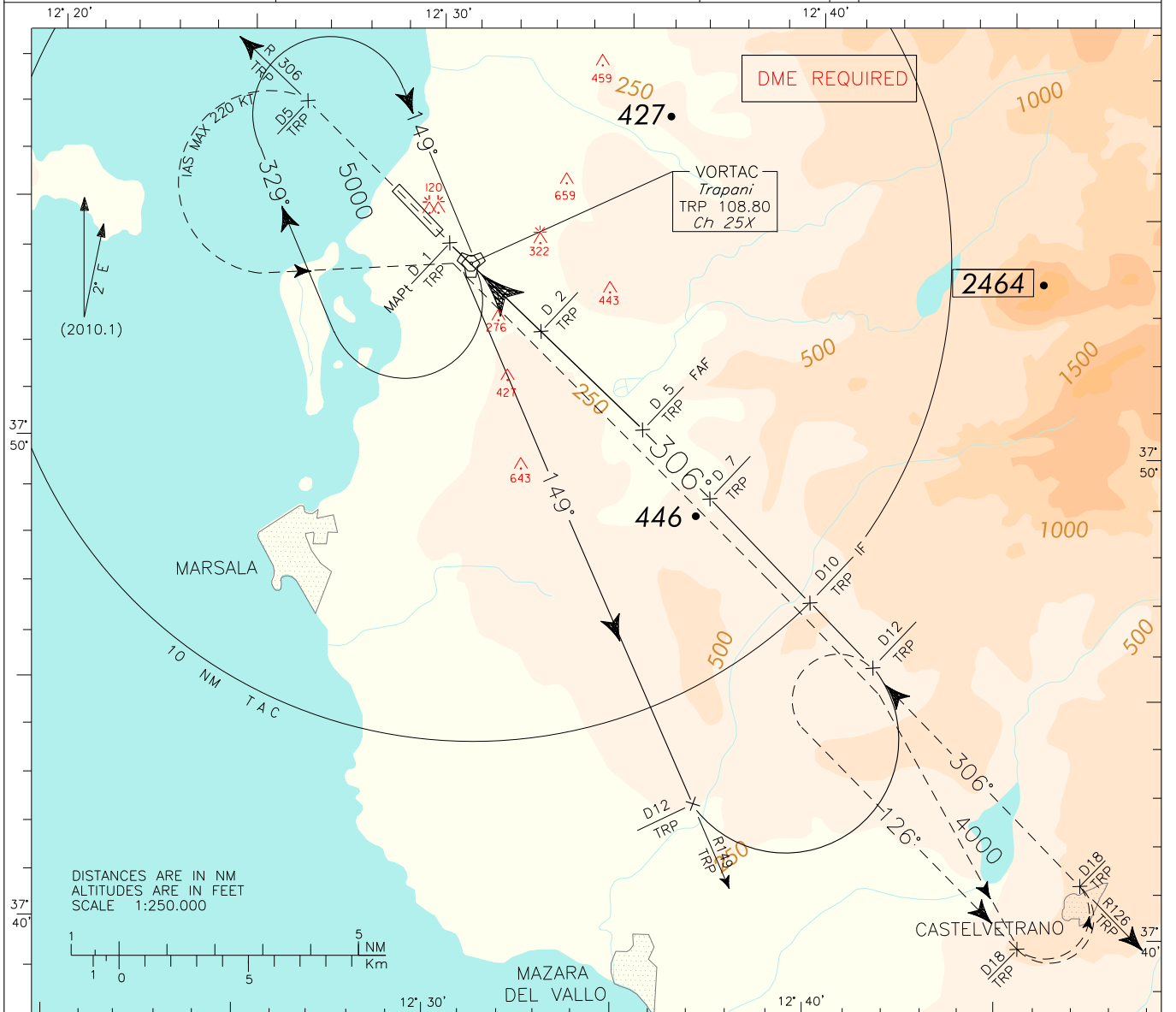


OCA (OCH)		A	B	C	D	(1) Circling South/South West of runway only.	GS	PER MIN	DIST	ALT (HGT)	MNM SECT ALT TRP VOR
STRAIGHT IN APPROACH	VOR	640 (620)						70	380	4DME	
						90		490	3DME		1370(1350)
						110		600		2DME	1040(1020)
						130		710	1DME		710(690)
						150		820		0.8DME	640(620)
						170		930			
					190	1040					
					210	1150					

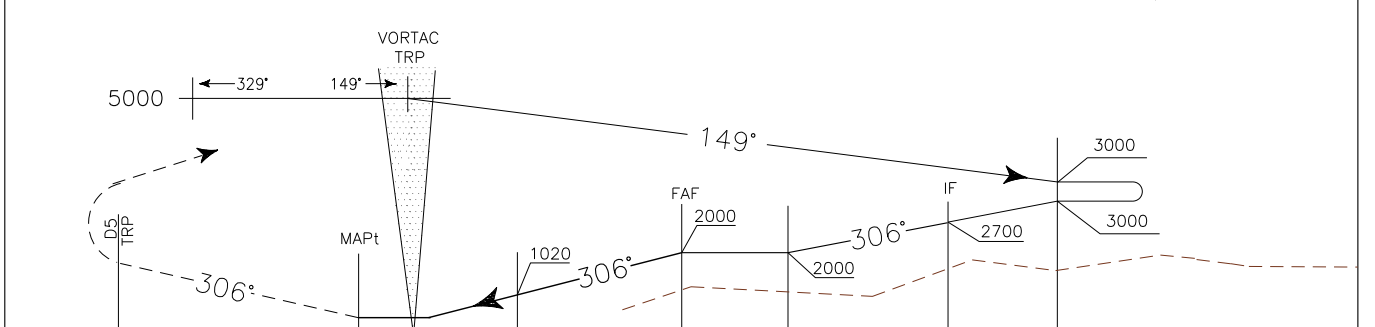
APP	Trapani APP/Radar	119.950	122.805	AD ELEV	26	L I C I T	TRAPANI/ BIRGI VOR-Y (CAT. C/D) RWY 31L
TWR	Trapani TWR	119.730	122.100				

DOC:8168-ED.3-1986

CHANGE: AD ELEVATION UPDATED



**TRANSITION ALT 5000** MISSED APPROACH: At 1 NM after TRP TACAN proceed on RDL 306 TRP VOR climb to 4000 ft. At 5 NM TRP TACAN turn left to join and follow RDL 126 TRP VOR (left turn limited to 220 kt) direct to Missed Approach holding pattern. Hold on RDL 126 at 4000 ft between 12 NM and 18 NM TRP VORTAC. Inbound track 306°, left turn.



TRP TACAN	6	5	4	3	2	1	0	1	2	3	4	5	6	7	8	9	10	11	12	13	14	15	16	17	TRP TACAN
	NM																								

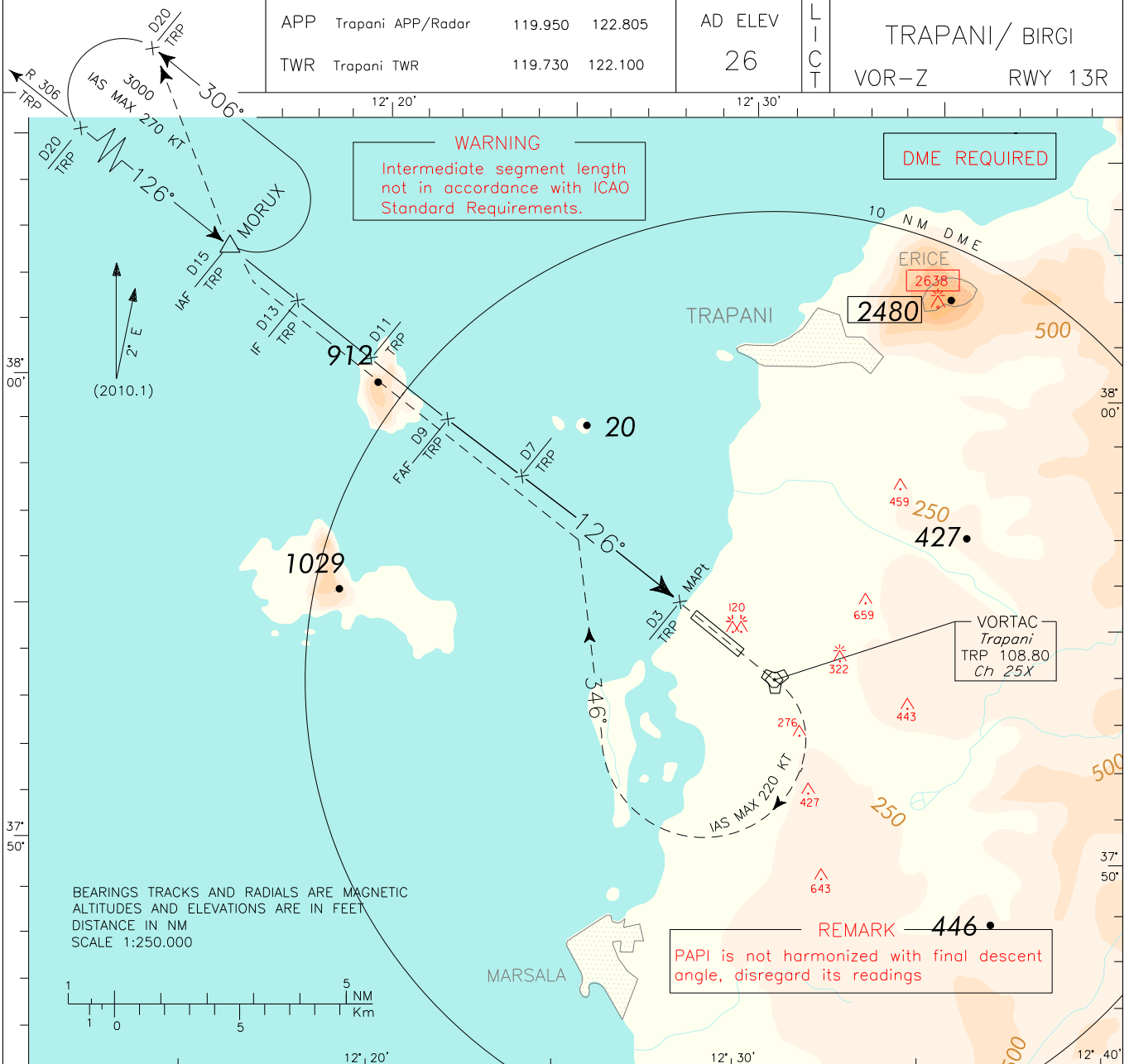
STRAIGHT IN APPROACH	OCA (OCH)		A	B	C	D	Circling South/South West of runway only. (1)		GS	PER MIN	DIST	ALT (HGT)	MNM SECT ALT TRP 
	VOR+DME	640 (620)				640 (620)			70	380	5 DME	2000(1980)	
CIRCLING (1)					1040 (1020)	1040 (1020)	90	490	4 DME	1670(1650)			
							110	600	3 DME	1350(1330)			
							130	710	2 DME	1020(1000)			
							150	820	1 DME	700 (680)			
							170	930	0.8DME	640 (620)			

ICAO – INSTRUMENT APPROACH CHART

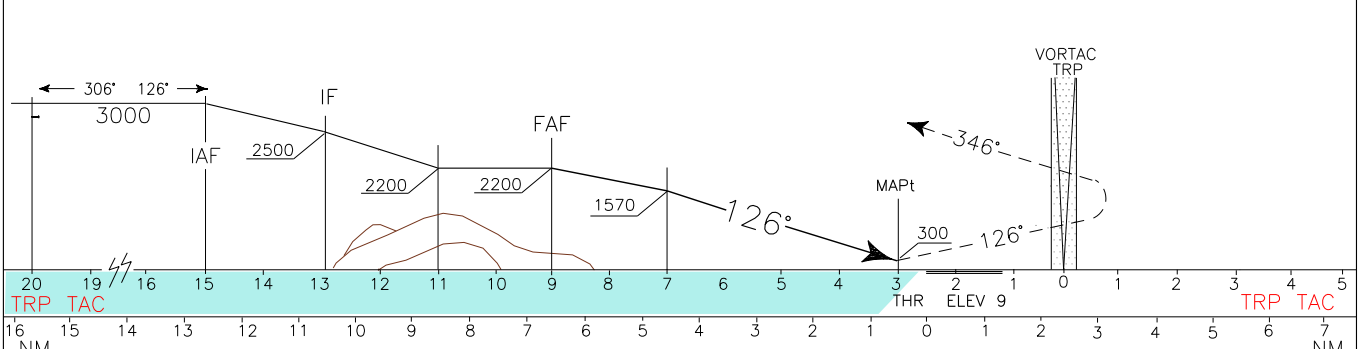
AD 2 LIC 5-21

DOC.8168-ED.3-1986

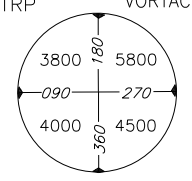
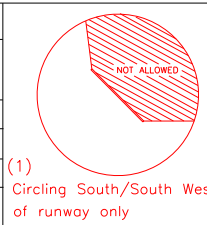
CHANGE: AD ELEVATION UPDATED



TRANSITION ALT 5000 MISSED APPROACH: At 3 NM TRP TACAN climb to 3000 ft to TRP VOR. Overhead TRP VORTAC, turn right on TR 346° (IAS MAX 220 kt) to join and follow RDL 306 TRP VOR (TR 306°) until joining MORUX (RDL 306/15 NM TRP VORTAC) holding pattern.  
 Hold on RDL 306 (TR 126°) between 15 NM and 20 NM TRP TACAN; left turns – IAS MAX 270 kt.



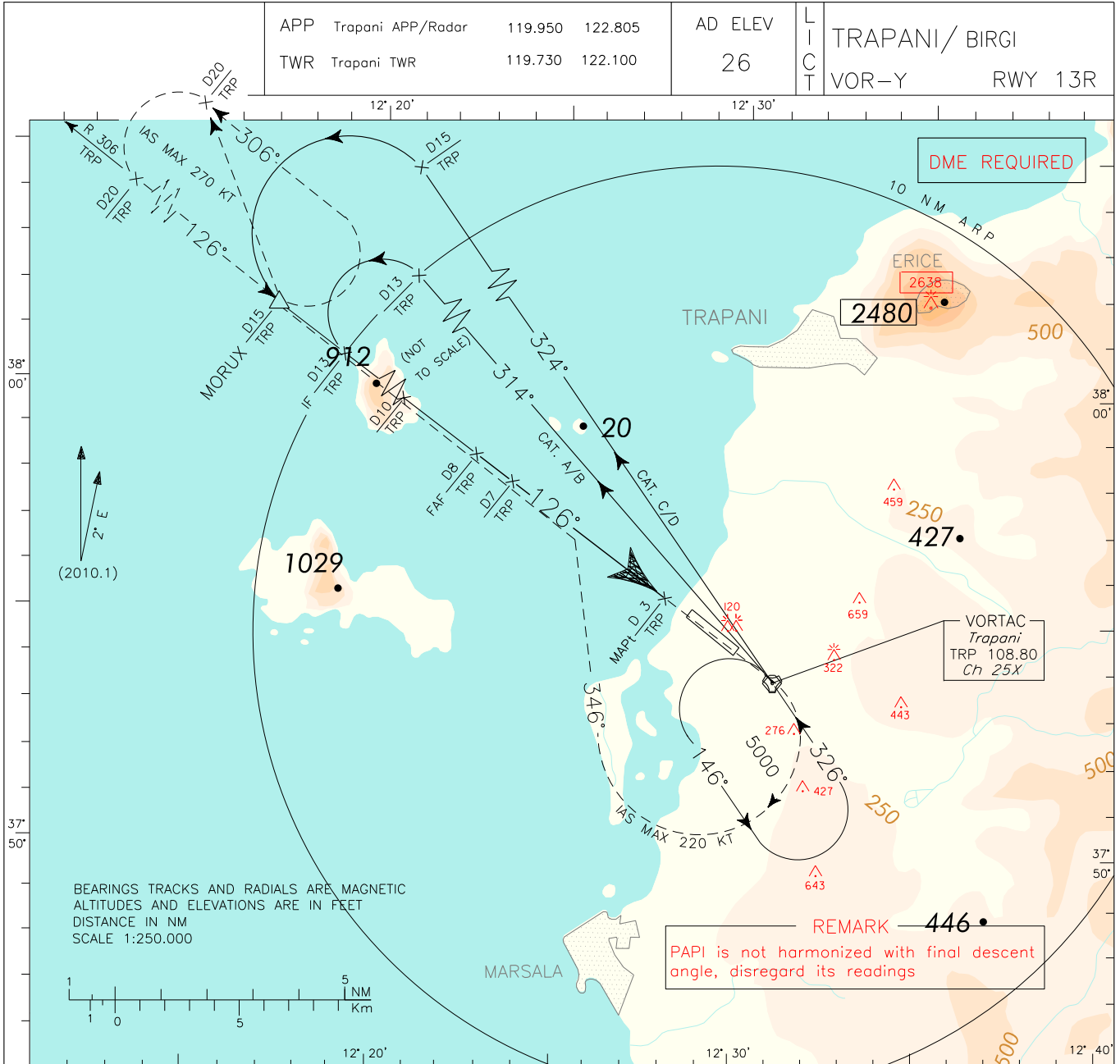
OCA (OCH)		A	B	C	D	GS	FT PER MIN	DIST	ALT (HGT)	MNM SECT ALT	VORTAC
STRAIGHT IN APPROACH	VOR	450 (440)									
CIRCLING (1)						8 DME	1890(1880)				
						7 DME	1570(1560)				
						6 DME	1250(1240)				
						5 DME	930 (920)				
						4 DME	620 (610)				
						3 DME	450 (440)				
						3.5 DME	450 (440)				



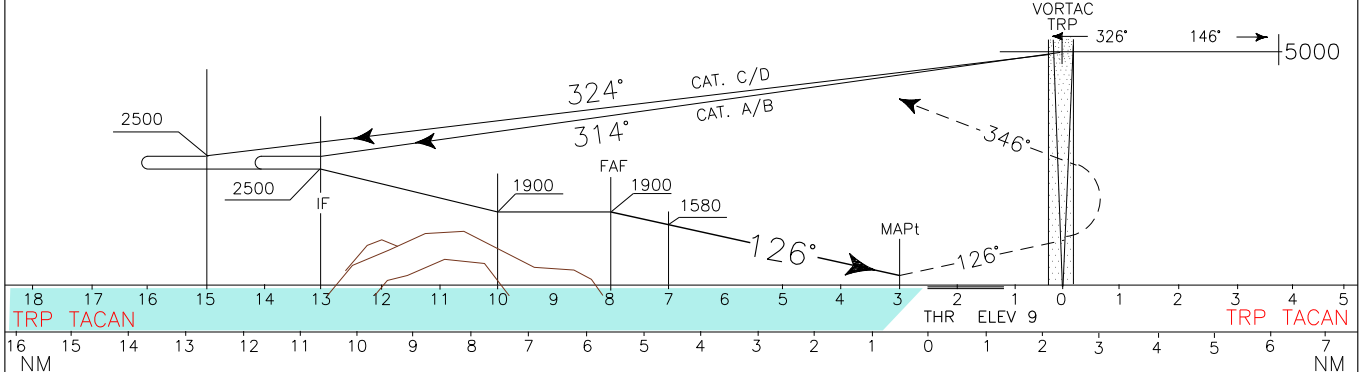
APP	Trapani APP/Radar	119.950	122.805	AD ELEV	26	L I C T	TRAPANI/ BIRGI
TWR	Trapani TWR	119.730	122.100				VOR-Y

DOC.8168-ED.3-1986

CHANGE: AD ELEVATION UPDATED



TRANSITION ALT 5000 MISSED APPROACH: At 3 NM TRP TACAN climb to 3000 ft maintaining TR 126° to TRP VOR. Overhead TRP VORTAC, turn right TR 346° (IAS MAX 220 kt) to intercept and follow RDL 306 TRP VOR (TR 306°) until joining MORUX (RDL 306/15 NM TRP VORTAC) holding pattern.  
Hold on RDL 306 (TR 126°) between 15 NM and 20 NM TRP TACAN; left turns – IAS MAX 270 kt.

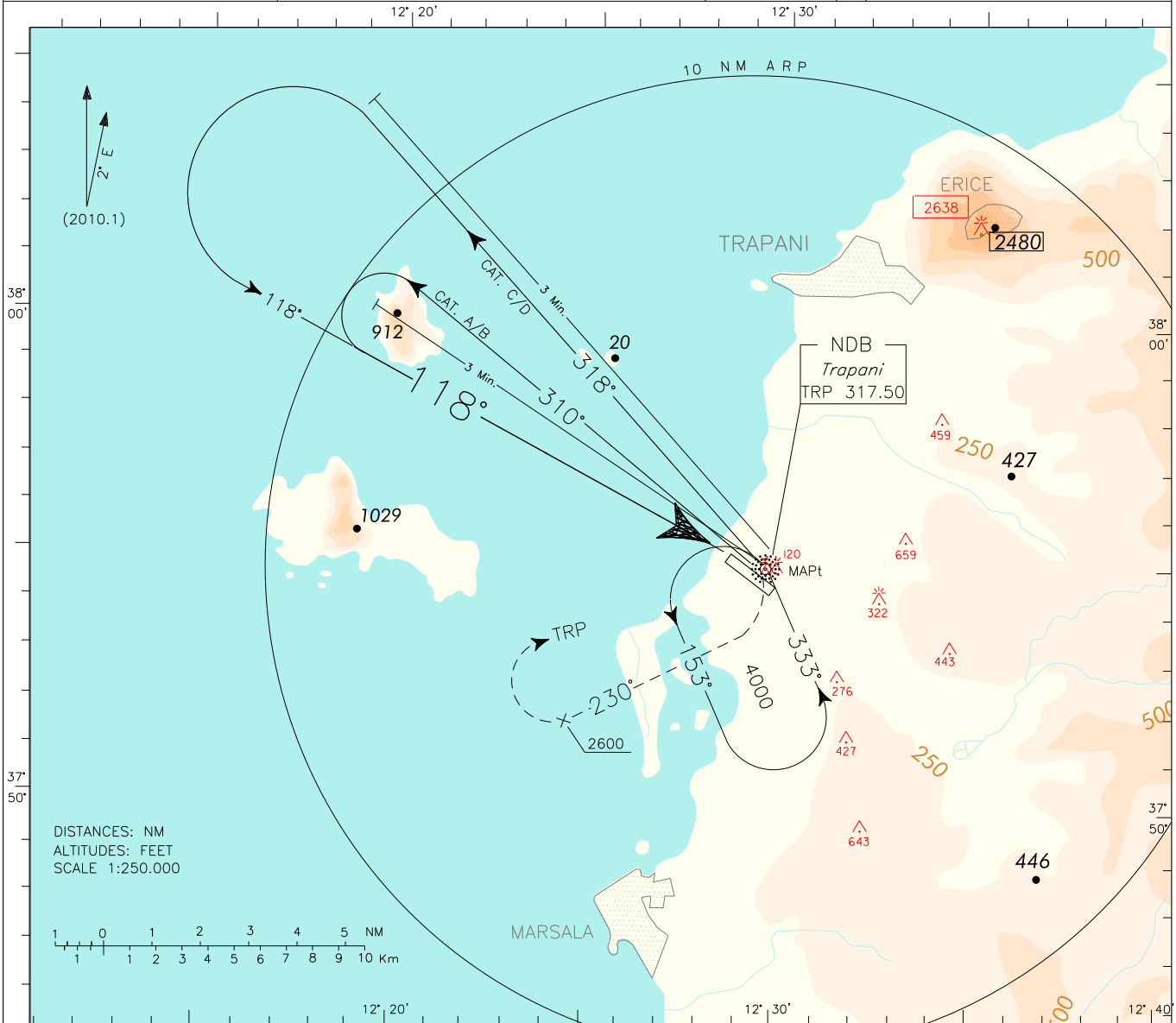


STRAIGHT IN APPROACH	OCA (OCH)				(1) Circling South/South West of runway only	GS	FT PER MIN	DIST	ALT (HGT)	MNM SECT ALT TRP	VORTAC
	A	B	C	D							
VOR	450 (440)					70	380	8 DME	1900(1890)		
						90	490	7 DME	1580(1570)		
						110	600				
						130	700	6 DME	1260(1250)		
						150	810	5 DME	940 (930)		
					170	920	4 DME	620 (610)			
					190	1030					
CIRCLING (1)	640 (620)		1040 (1020)			210	1140	3.5DME	450 (440)		

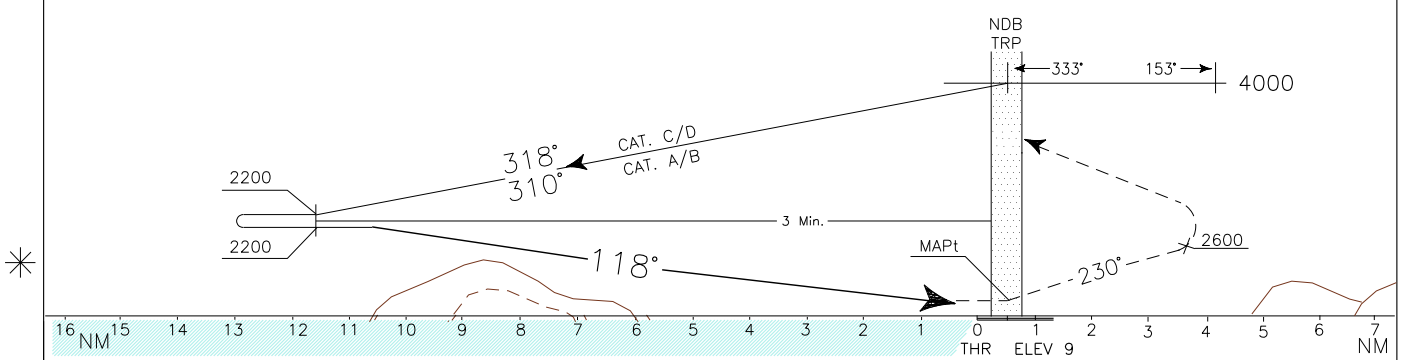
REMARK: Inbound track is off-set 8° from RWY bearing 126°.	APP Trapani APP/Radar	119.950	122.805	AD ELEV	L I C I T	TRAPANI/ BIRGI NDB RWY 13R
	TWR Trapani TWR	119.730	122.100	26		

DOC.8168-ED.3-1986

CHANGE: AD ELEVATION UPDATED



**TRANSITION ALT 5000** MISSED APPROACH: Over TRP NDB turn right TR 230° climbing to 4000 ft. Leaving 2600 ft turn right bound to TRP NDB to be reached at 4000 ft. IAS MAX 250 kt.

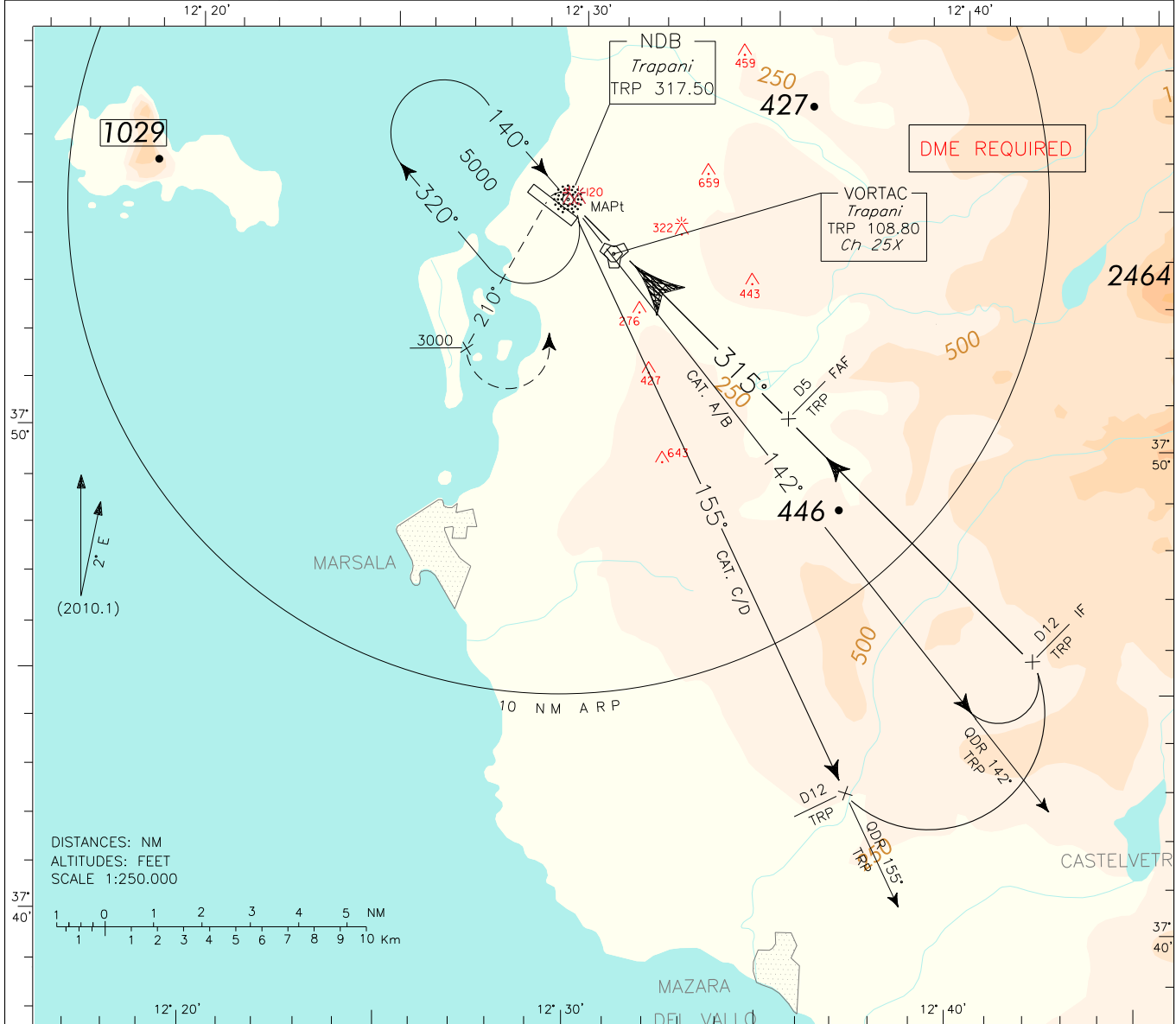


OCA (OCH)	A	B	C	D	REMARK: For category A and B ACFT circling approach is available only.	MNM SECT ALT NDB TRP
STRAIGHT IN APPROACH	NDB	REMARK	REMARK	1430 (1420)		
CIRCLING	1430 (1410)					

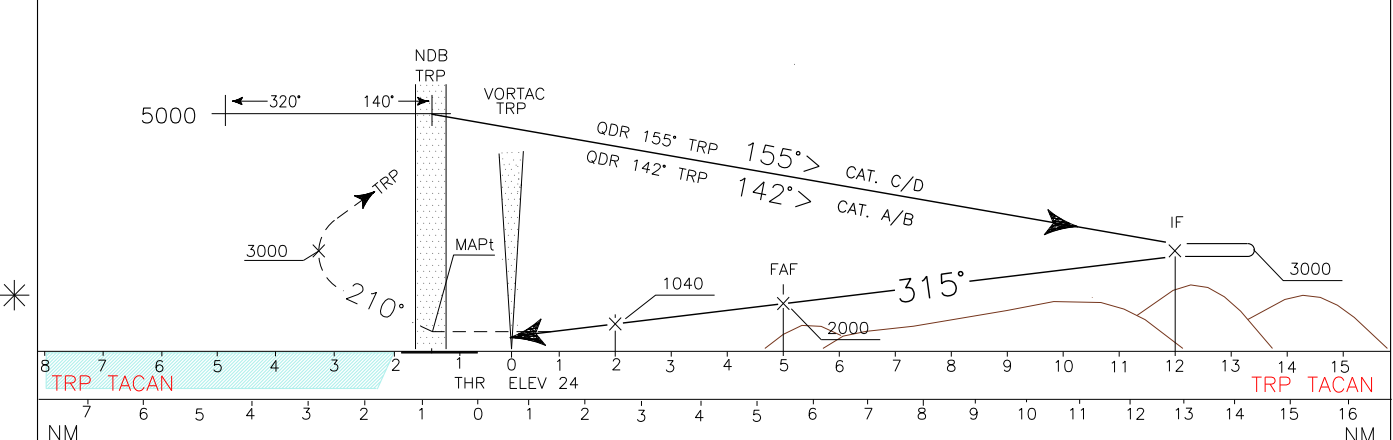
<b>REMARK:</b> Inbound track is off-set 9' from RWY bearing 306°.	APP Trapani APP/Radar	119.950	122.805	AD ELEV	L I C I T	TRAPANI/ BIRGI NDB RWY 31L
	TWR Trapani TWR	119.730	122.100	26		

DOC.8168-ED.3-1986

CHANGE: AD ELEVATION UPDATED



**TRANSITION ALT 5000** MISSED APPROACH: Over TRP NDB turn left on TR 210° climbing to 5000 ft. Passing 3000 ft turn left bound to TRP NDB to reach at 5000 ft. IAS MAX 250 kt.



TRP TACAN	7	6	5	4	3	2	1	0	1	2	3	4	5	6	7	8	9	10	11	12	13	14	15	16	TRP TACAN
NM	7	6	5	4	3	2	1	0	1	2	3	4	5	6	7	8	9	10	11	12	13	14	15	16	NM
OCA (OCH)	A		B		C		D																		
STRAIGHT IN APPROACH	NDB		640 (620)																						
CIRCLING (1)	640 (620)				1040 (1020)																				

(1) Circling South/South West of runway only.

