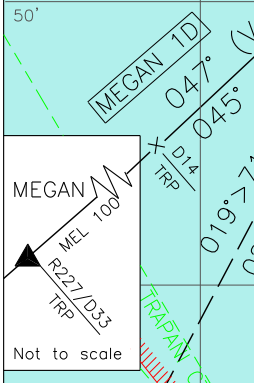
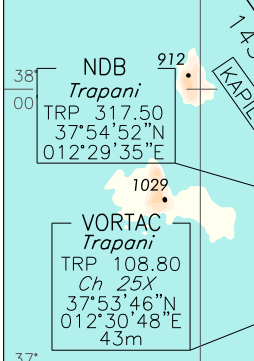
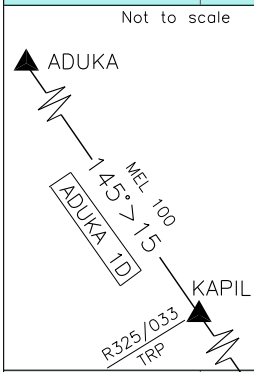


STAR NDB/VOR	TRAPANI/ BIRGI
	TRANSITION ALT 5000
MSA TRP VOR 25 NM	FREQUENCIES
	APP Trapani App/Radar 119.950 122.805
	TWR Trapani TWR 119.730 122.100

CHANGE: BOX FREQ UPDATED AND STAR "PAL 1D" RENAMED "PAL 1T"



LEGEND	
	STAR
	STAR ATC Discretion
	NOT TO SCALE
	CTR

NDB	Holding Procedures	VOR	Holding Procedures
	RWY 13 R	RWY 13 R	RWY 31 L

**GIANO 1D (A discrezione ATC)**

GIANO – TR 175° (RDL 355 TRP VOR) o TR 176° (QDR 356° TRP NDB) – TRP VORTAC (TRP NDB).

**GIANO 1D (ATC discretion)**

GIANO – TR 175° (RDL 355 TRP VOR or TR 176° (QDR 356° TRP NDB) – TRP VORTAC (TRP NDB).

MEL/MEA: GIANO – MUSKY – RDL 355 TRP VOR (QDR 356° TRP NDB)/32 NM TRP TACAN: FL 120; RDL 355 TRP VOR (QDR/QDR 356° TRP NDB)/32 NM TRP TACAN – TRP VORTAC (TRP NDB): 5000 FT

**ADUKA 1D**

ADUKA – TR 145° (RDL/QDR 325 TRP VOR/NDB) – TRP VORTAC (TRP NDB).

**ADUKA 1D**

ADUKA – TR 145° (RDL/QDR 325 TRP VOR/NDB) – TRP VORTAC (TRP NDB).

MEA/MEL: ADUKA – KAPIL: FL100; KAPIL - TRP VORTAC (TRP NDB): 5000 FT

**KAPIL 1D**

KAPIL – TR 145° (RDL/QDR 325 TRP VOR/NDB) – TRP VORTAC (TRP NDB).

**KAPIL 1D**

KAPIL – TR 145° (RDL/QDR 325 TRP VOR/NDB – TRP VORTAC (TRP NDB).

MEA: KAPIL – TRP VORTAC (TRP NDB): 5000 FT

**MEGAN 1D**

MEGAN – TR 047° (RDL 227 TRP VOR) o TR 045° (QDR 225° TRP NDB) – TRP VORTAC (TRP NDB).

**MEGAN 1D**

MEGAN – TR 047° (RDL 227 TRP VOR) or TR 045° (QDR 225° TRP NDB) – TRP VORTAC (TRP NDB).

MEL/MEA: MEGAN – RDL 227 TRP VOR (QDR 225° TRP NDB)/14 NM TRP TACAN: FL 100; RDL 227 TRP VOR (QDR 225° TRP NDB)/14 NM TRP TACAN – TRP VORTAC (TRP NDB): 5000 FT

**PAN 1D (A discrezione ATC)**

PAN VOR/DME – TR 020° (RDL 200 TRP VOR) o TR 019° (QDR 199° TRP NDB) – TRP VORTAC (TRP NDB).

**PAN 1D (ATC discretion)**

PAN VOR/DME – TR 020° (RDL 200 TRP VOR) or TR 019° (QDR 199° TRP NDB) – TRP VORTAC (TRP NDB).

MEA: PAN VOR/DME – TRP VORTAC (TRP NDB): 5000 FT

**PAL 1T**

PAL VOR/DME – TR 254° (RDL 074 TRP VOR) o TR 256° (QDR 076° TRP NDB) – TRP VORTAC (TRP NDB).

**PAL 1T**

PAL VOR/DME – TR 254° (RDL 074 TRP VOR) or TR 256° (QDR 076° TRP NDB) – TRP VORTAC (TRP NDB).

MEL/MEA: PAL VOR/DME – RDL 074 TRP VOR (QDR 076° TRP NDB)/9 NM TRP TACAN: FL 90; RDL 074 TRP VOR (QDR 076° TRP NDB)/9 NM TRP TACAN – TRP VORTAC (TRP NDB): 5000 FT

**PRS 1D (A discrezione ATC)**

PRS VOR/DME – TR 237° (RDL 057 TRP VOR) o TR 239° (QDR 059° TRP NDB) – TRP VORTAC (TRP NDB).

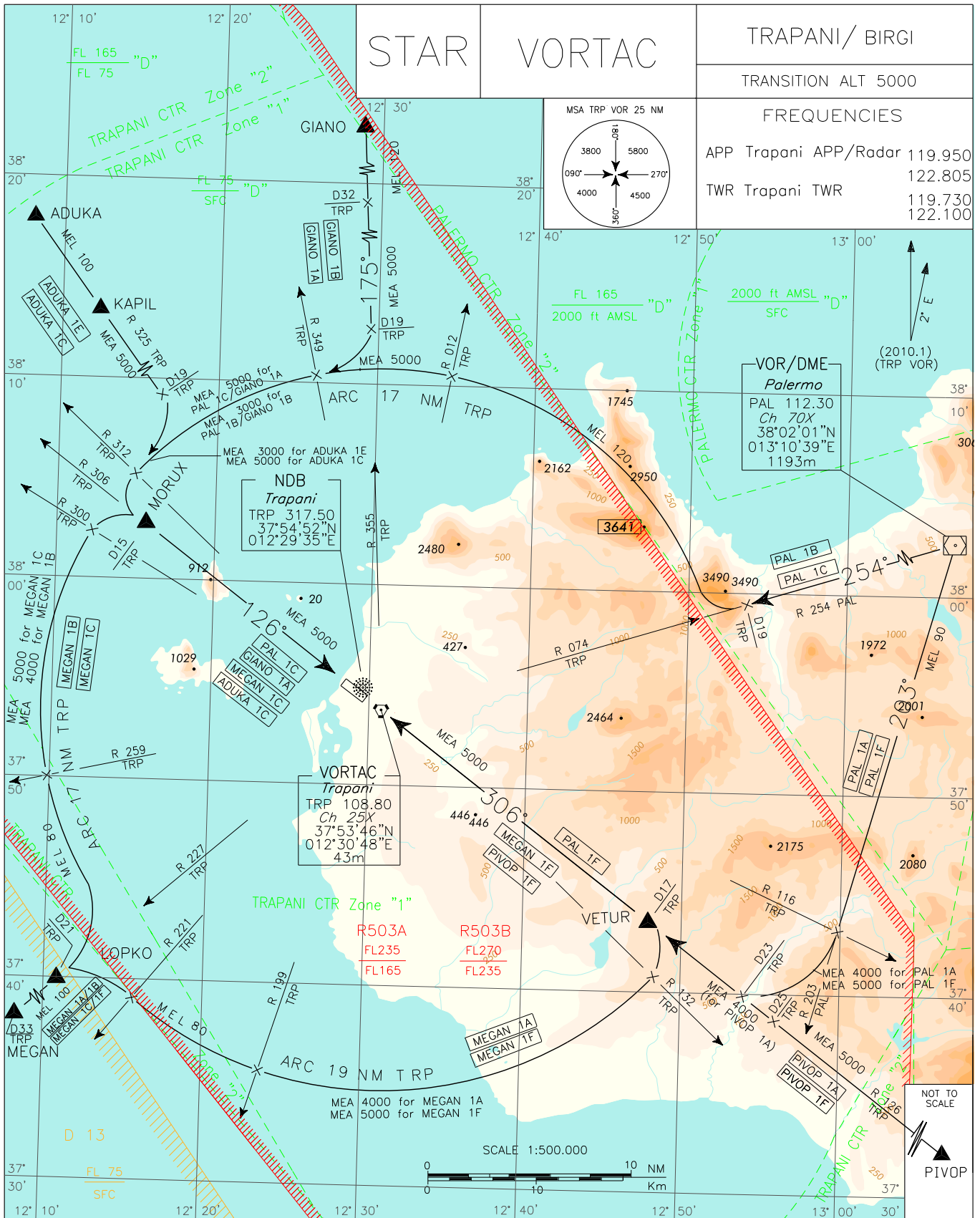
**PRS 1D (ATC discretion)**

PRS VOR/DME – TR 237° (RDL 057 TRP VOR) or TR 239° (QDR 059° TRP NDB) – TRP VORTAC (TRP NDB).

MEL/MEA: PRS VOR/DME – RDL 057 TRP VOR (QDR 059° TRP NDB)/5 NM TRP TACAN: FL 90; RDL 057 TRP VOR (QDR 059° TRP NDB)/5 NM TRP TACAN – TRP VORTAC (TRP NDB): 5000 FT

Intenzionalmente bianca

*Intentionally left blank*



CHANGE: TRAPANI TWR FREQ UPDATED

Holding Procedure on RDL 126 TRP VORTAC	TRP Holding Pattern		MORUX Holding Pattern	LEGEND
				<ul style="list-style-type: none"> <li>← STAR</li> <li>← - - - STAR ATC Discretion</li> <li>⚡ NOT TO SCALE</li> <li>- - - CTR</li> </ul>

**GIANO 1B**

GIANO – TR 175° (RDL 355 TRP VOR) fino a 19 NM TRP TACAN, quindi virare a destra fino ad intercettare e seguire ARC 17 NM TRP TACAN; attraversando RDL 312 TRP VOR virare a sinistra per il punto MORUX (RDL 306/15 NM TRP VORTAC).

MEL/MEA: GIANO – RDL 355/32 NM TRP VORTAC: FL 120; RDL 355/32 NM TRP VORTAC – INT ARC 17 NM TRP TACAN/RDL 349 TRP VOR: 5000 FT; INT ARC 17 NM TRP TACAN/RDL 349 TRP VOR – MORUX: 3000 FT

**GIANO 1A**

GIANO – TR 175° (RDL 355 TRP VOR) fino a 19 NM TRP TACAN, quindi virare a destra fino ad intercettare e seguire ARC 17 NM TRP TACAN; attraversando RDL 312 TRP VOR virare a sinistra fino ad intercettare e seguire RDL 306 TRP VOR (TR 126°) per il punto MORUX, quindi TRP VOR.

MEL/MEA: GIANO – RDL 355/32 NM TRP VORTAC: FL 120; RDL 355/32 NM TRP VORTAC – INT ARC 17 NM TRP TACAN/RDL 349 TRP VOR – MORUX – TRP VOR: 5000 FT

**GIANO 1B**

GIANO – TR 175° (RDL 355 TRP VOR) until 19 NM TRP TACAN, then turn right until joining ARC 17 NM TRP TACAN; crossing RDL 312 TRP VOR turn left bound to MORUX (RDL 306/15 NM TRP VORTAC).

**GIANO 1A**

GIANO – TR 175° (RDL 355 TRP VOR) until 19 NM TRP TACAN, then turn right until joining ARC 17 NM TRP TACAN; crossing RDL 312 TRP VOR turn left until joining RDL 306 TRP VOR (TR 126°) bound to MORUX, then TRP VOR.

**ADUKA 1E**

ADUKA – TR 145° (RDL 325 TRP VOR) fino a 19 NM TRP TACAN, quindi virare a destra fino ad intercettare e seguire ARC 17 NM TRP TACAN; attraversando RDL 312 TRP VOR virare a sinistra per il punto MORUX (RDL 306/15 NM TRP VORTAC).

MEL/MEA: ADUKA – KAPIL: FL100; KAPIL - RDL 325/19 NM TRP VORTAC: 5000;  
RDL 325/19 NM TRP VORTAC – MORUX: 3000 FT

**ADUKA 1C**

ADUKA – TR 145° (RDL 325 TRP VOR) fino a 19 NM TRP TACAN, quindi virare a destra fino ad intercettare e seguire ARC 17 NM TRP TACAN; attraversando RDL 312 TRP VOR virare a sinistra fino ad intercettare e seguire RDL 306 TRP VOR (TR 126°) per il punto MORUX, quindi TRP VOR.

MEL/MEA: ADUKA - KAPIL:FL100; KAPIL - TRP VOR: 5000 FT

**ADUKA 1E**

ADUKA – TR 145° (RDL 325 TRP VOR) until 19 NM TRP TACAN, then turn right until joining ARC 17 NM TRP TACAN; crossing RDL 312 TRP VOR turn left bound to MORUX (RDL 306/15 NM TRP VORTAC).

**ADUKA 1C**

ADUKA – TR 145° (RDL 325 TRP VOR) until 19 NM TRP TACAN, then turn right until joining ARC 17 NM TRP TACAN; crossing RDL 312 TRP VOR turn left until joining RDL 306 TRP VOR (TR 126°) bound to MORUX, then TRP VOR.

**PAL 1C**

PAL VOR/DME – TR 254° (RDL 074 TRP VOR) fino a 19 NM TRP TACAN, quindi virare a destra fino a intercettare e seguire ARC 17 NM TRP TACAN; attraversando RDL 312 TRP VOR virare a sinistra fino ad intercettare e seguire RDL 306 TRP VOR (TR 126°) per il punto MORUX, quindi TRP VOR.

MEL/MEA: PAL VOR/DME – INT ARC 17 NM TRP TACAN/RDL 012 TRP VOR: FL 120; INT ARC 17 NM TRP TACAN/RDL 012 TRP VOR – MORUX – TRP VORTAC: 5000 FT

**PAL 1B**

PAL VOR/DME – TR 254° (RDL 074 TRP VOR) fino a 19 NM TRP TACAN, quindi virare a destra fino a intercettare e seguire ARC 17 NM TRP TACAN; attraversando RDL 312 TRP VOR virare a sinistra per il punto MORUX (RDL 306/15 NM TRP VORTAC).

MEL/MEA: PAL VOR/DME – INT ARC 17 NM TRP TACAN/RDL 012 TRP VOR: FL 120; INT ARC 17 NM TRP TACAN/RDL 012 TRP VOR – INT ARC 17 NM TRP TACAN/RDL 349 TRP VOR: 5000 FT; INT ARC 17 NM TRP TACAN/RDL 349 TRP VOR – MORUX: 3000 FT

**PAL 1F**

PAL VOR/DME – TR 203° (RDL 203 PAL VOR), quindi attraversando RDL 116 TRP VOR virare a destra fino ad intercettare e seguire RDL 126 TRP VOR (TR 306°) per il punto VETUR, quindi TRP VOR.

MEL/MEA: PAL VOR/DME – INT RDL 203 PAL VOR/RDL 116 TRP VOR: FL 90; INT RDL 203 PAL VOR/RDL 116 TRP VOR – VETUR – TRP VORTAC: 5000 FT

**PAL 1C**

PAL VOR/DME – TR 254° (RDL 074 TRP VOR) until 19 NM TRP TACAN, then turn right until joining ARC 17 NM TRP TACAN; crossing RDL 312 TRP VOR turn left until joining RDL 306 TRP VOR (TR 126°) bound to MORUX, then TRP VOR.

**PAL 1B**

PAL VOR/DME – TR 254° (RDL 074 TRP VOR) until 19 NM TRP TACAN, then turn right until joining ARC 17 NM TRP TACAN; crossing RDL 312 TRP VOR turn left bound to MORUX (RDL 306/15 NM TRP VORTAC).

**PAL 1F**

PAL VOR/DME – TR 203° (RDL 203 PAL VOR), then crossing RDL 116 TRP VOR turn right until joining RDL 126 TRP VOR (TR 306°) bound to VETUR, then TRP VOR.

**PAL 1A**

PAL VOR/DME – TR 203° (RDL 203 PAL VOR), quindi attraversando RDL 116 TRP VOR virare a destra per il punto VETUR (RDL 126/17 NM TRP VORTAC).

MEL/MEA: PAL VOR/DME – INT RDL 203 PAL VOR/RDL 116 TRP VOR: FL 90; INT RDL 203 PAL VOR/RDL 116 TRP VOR – VETUR: 4000 FT

**MEGAN 1A**

MEGAN – TR 047° (RDL 227 TRP VOR) – LOPKO; quindi virare a destra fino ad intercettare e seguire ARC 19 NM TRP TACAN; attraversando RDL 132 TRP VOR virare a sinistra per il punto VETUR (RDL 126/17 NM TRP VORTAC).

MEL/MEA: MEGAN – LOPKO: FL 100; LOPKO – INT ARC 19 NM TRP TACAN/RDL 199 TRP VOR: FL 80; INT ARC 19 NM TRP TACAN/RDL 199 TRP VOR – VETUR: 4000 FT

**MEGAN 1F**

MEGAN – TR 047° (RDL 227 TRP VOR) – LOPKO; quindi virare a destra fino ad intercettare e seguire ARC 19 NM TRP TACAN; attraversando RDL 132 TRP VOR virare a sinistra fino ad intercettare e seguire RDL 126 TRP VOR (TR 306°) per il punto VETUR, quindi TRP VOR.

MEL/MEA: MEGAN – LOPKO: FL 100; LOPKO – INT ARC 19 NM TRP TACAN/RDL 199 TRP VOR: FL 80; INT ARC 19 NM TRP TACAN/RDL 199 TRP VOR – VETUR – TRP VORTAC: 5000 FT

**MEGAN 1B**

MEGAN – TR 047° (RDL 227 TRP VOR) – LOPKO; quindi virare a sinistra fino ad intercettare e seguire ARC 17 NM TRP TACAN; attraversando RDL 300 TRP VOR virare a destra per il punto MORUX (RDL 306/15 NM TRP VORTAC).

MEL/MEA: MEGAN – LOPKO: FL 100; LOPKO – INT ARC 17 NM TRP TACAN/RDL 259 TRP VOR: FL 80; INT ARC 17 NM TRP TACAN/RDL 259 TRP VOR – MORUX: 4000 FT

**MEGAN 1C**

MEGAN – TR 047° (RDL 227 TRP VOR) – LOPKO; quindi virare a sinistra fino ad intercettare e seguire ARC 17 NM TRP TACAN, attraversando RDL 300 TRP VOR virare a destra fino ad intercettare e seguire RDL 306 TRP VOR (TR 126°) per il punto MORUX, quindi TRP VOR.

MEL/MEA: MEGAN – LOPKO: FL 100; LOPKO – INT ARC 17 NM TRP TACAN/RDL 259 TRP VOR: FL 80; INT ARC 17 NM TRP TACAN/RDL 259 TRP VOR – MORUX – TRP VORTAC: 5000 FT

**PIVOP 1A**

PIVOP – TR 306° (RDL 126 TRP VOR) – VETUR.

MEA: PIVOP – RDL 126/25NM TRP VORTAC: 5000 FT; RDL 126/25NM TRP VORTAC – VETUR: 4000 FT

**PIVOP 1F**

PIVOP – TR 306° (RDL 126 TRP VOR) – TRP VORTAC.

MEA: PIVOP – TRP VORTAC: 5000 FT

**PAL 1A**

PAL VOR/DME – TR 203° (RDL 203 PAL VOR), then crossing RDL 116 TRP VOR turn right bound to VETUR (RDL 126/17 NM TRP VORTAC).

**MEGAN 1A**

MEGAN – TR 047° (RDL 227 TRP VOR) – LOPKO; then turn right until joining ARC 19 NM TRP TACAN; crossing RDL 132 TRP VOR turn left bound to VETUR (RDL 126/17NM TRP VORTAC).

**MEGAN 1F**

MEGAN – TR 047° (RDL 227 TRP VOR) – LOPKO; then turn right until joining ARC 19 NM TRP TACAN; crossing RDL 132 TRP VOR turn left until joining RDL 126 TRP VOR (TR 306°) bound to VETUR, then TRP VOR.

**MEGAN 1B**

MEGAN – TR 047° (RDL 227 TRP VOR) – LOPKO; then turn left until joining ARC 17 NM TRP TACAN; crossing RDL 300 TRP VOR turn right bound to MORUX (RDL 306/15 NM TRP VORTAC).

**MEGAN 1C**

MEGAN – TR 047° (RDL 227 TRP VOR) – LOPKO; then turn left until joining ARC 17 NM TRP TACAN; crossing RDL 300 TRP VOR turn right until joining RDL 306 TRP VOR (TR 126°) bound to MORUX, then TRP VOR.

**PIVOP 1A**

PIVOP – TR 306° (RDL 126 TRP VOR) – VETUR.

**PIVOP 1F**

PIVOP – TR 306° (RDL 126 TRP VOR) – TRP VORTAC.