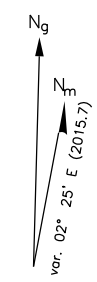


Bearings are magnetic Distances in metres Elevations in feet AMSL Coordinates WGS84			TWR 119.730 122.100
RWY	QFU	THR	BEARING STRENGTH
13R	125°	37° 55' 07.76"N 12° 28' 32.94"E	PCN 89/F/A/W/T
31L	305°	37° 54' 19.27"N 12° 29' 52.30"E	PCN 89/F/A/W/T



AD ELEV 26	TRAPANI / BIRGI	
APRON ELEV Nil	L I C T	37° 54' 43" N 012° 29' 36" E

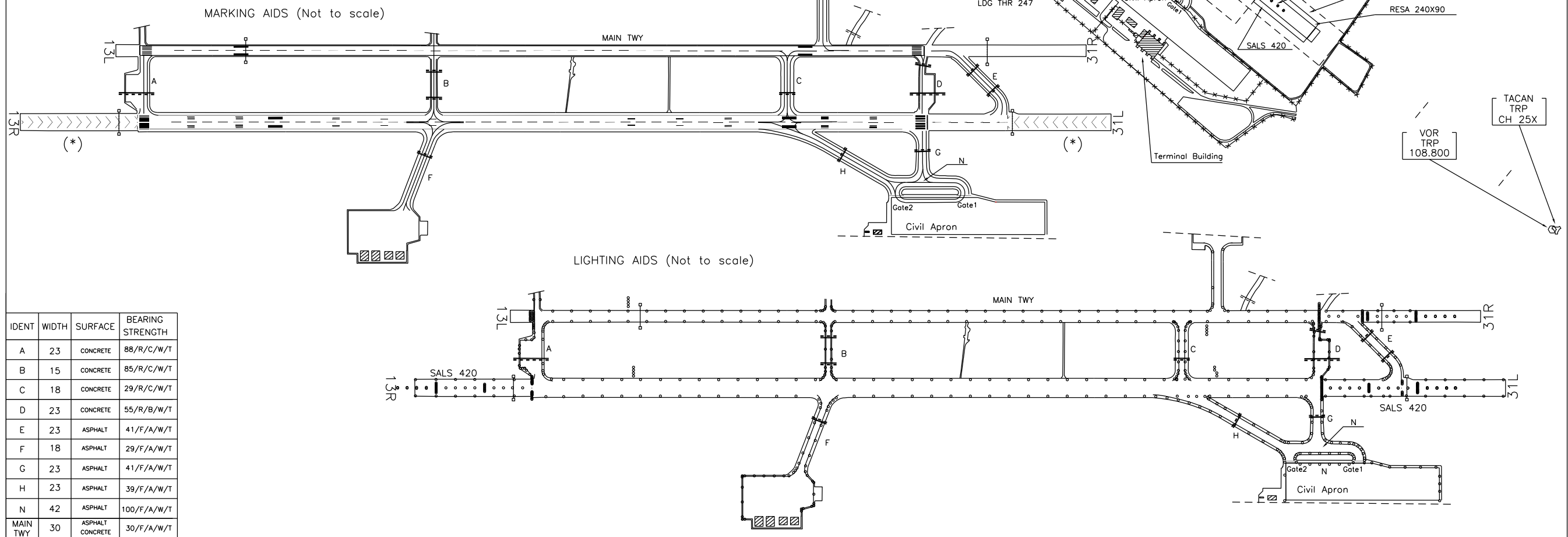
**REMARKS**  
 (\*) PAVED SURFACE WITH STRENGTH ADEQUATE TO SUPPORT THE ARREST OF THE AEROPLANE WHICH IS INTENDED TO SERVE, FOR MILITARY USE ONLY.



**WARNING**  
 MAIN TAXIWAY AVAILABLE AS RWY 13L/31R FOR MILITARY USE ONLY

**REMARKS**  
 1) RUNWAY STRIP NOT FULLY COMPLIANT WITH ICAO ANNEX 14 DUE TO OBSTACLES  
 2) TAXIING ON TWY E IS ALWAYS FORBIDDEN WHILE RWY 31L IS IN USE

CHANGE: AD ELEV, RWY 13R/31L AND TWYS STRENGTH UPDATED



MARKING AIDS (Not to scale)

IDENT	WIDTH	SURFACE	BEARING STRENGTH
A	23	CONCRETE	88/R/C/W/T
B	15	CONCRETE	85/R/C/W/T
C	18	CONCRETE	29/R/C/W/T
D	23	CONCRETE	55/R/B/W/T
E	23	ASPHALT	41/F/A/W/T
F	18	ASPHALT	29/F/A/W/T
G	23	ASPHALT	41/F/A/W/T
H	23	ASPHALT	39/F/A/W/T
N	42	ASPHALT	100/F/A/W/T
MAIN TWY	30	ASPHALT CONCRETE	30/F/A/W/T

LIGHTING AIDS (Not to scale)

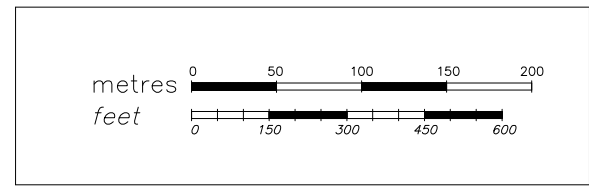
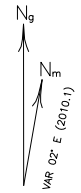
Bearings are magnetic	TWR	AD ELEV 26
Distances in metres	119.730	APRON ELEV NIL
Elevation in ft AMSL	122.100	
Coordinates WGS84		
APRON		
lighting	bearing	strength
Edge: Blue	Surface: 77.252 mq -Stands FROM 301 TO 305 Concrete- PCN 120/R/B/W/T -Stands FROM 306 TO 309 Asphalt- PCN 62/F/A/W/T	

**LEGEND:**  
1) ○ SELF MANOEUVRING

**PROVISIONS:**

- 1) Due to presence of personnel and vehicles on Apron and in order to avoid damage due to jet blast or slip stream, pilots are requested to taxi with minimum thrust maintaining strictly yellow markings.
- 2) Stands from 301 to 309 AVBL for ACFT with wingspan not greater than 36m, stand 302 max wingspan 52m, 309 max wingspan 39m.
- 3) Stands 308 and 309 open to civil helicopters with overall rotor length in movement MAX 17.1m; from 302 to 304 helicopters with overall rotor length in movement MAX 16.3m. PPR to OPERATIONS SERVICE, operative at FAX number +39 0932842367 or e-mail address operativo@airgest.it, at least 24 HR before the date of flight. Helicopters without wheels must enter the apron from Gate 2 and must proceed on the apron at a height compatible with ground effect and at a GS less than 10 kt.
- 4) ACFT parked on stands 305, 306, 307, 308 and 309 located near terminal building shall leave parking stand with minimum breakaway thrust.
- 5) in case of strong winds from the South/South-East or in case of parking contingencies, on pilots request or at "AIRGEST" operation service discretion, aircraft (31m max wing span) will be allowed to park, regardless horizontal markings, within stands 301, 302, 303, 304 and 309 areas.

TRAPANI / BIRGI		
L I C T	37°54'43.41" N	012°29'26.38" E



Lattice TWR COORD (WGS 84)		
	N	E
AIRSIDE		
LA1	37°54'01.44"	012°29'56.70"
LA2	37°54'02.99"	012°29'54.15"
LA3	37°54'04.55"	012°29'51.60"
LA4	37°54'05.81"	012°29'49.54"
LA5	37°54'07.95"	012°29'46.04"
LA6	37°54'09.67"	012°29'43.22"
LA7	37°54'11.19"	012°29'40.75"

CHANGE: AD ELEV UPDATED

POINT ON PARKING AREA		
STANDS	N	E
301	37°54'02,42"	012°29'57,57"
302	37°54'03,67"	012°29'55,51"
303	37°54'04,92"	012°29'53,47"
304	37°54'06,16"	012°29'51,44"
305	37°54'07,41"	012°29'49,23"
306	37°54'08,76"	012°29'47,31"
307	37°54'10,19"	012°29'45,25"
308	37°54'11,48"	012°29'43,14"
309	37°54'12,77"	012°29'41,04"

← alignment 1  
← alignment 2  
← alignment 1  
← alignment 2  
← alignment 1  
← alignment 2

