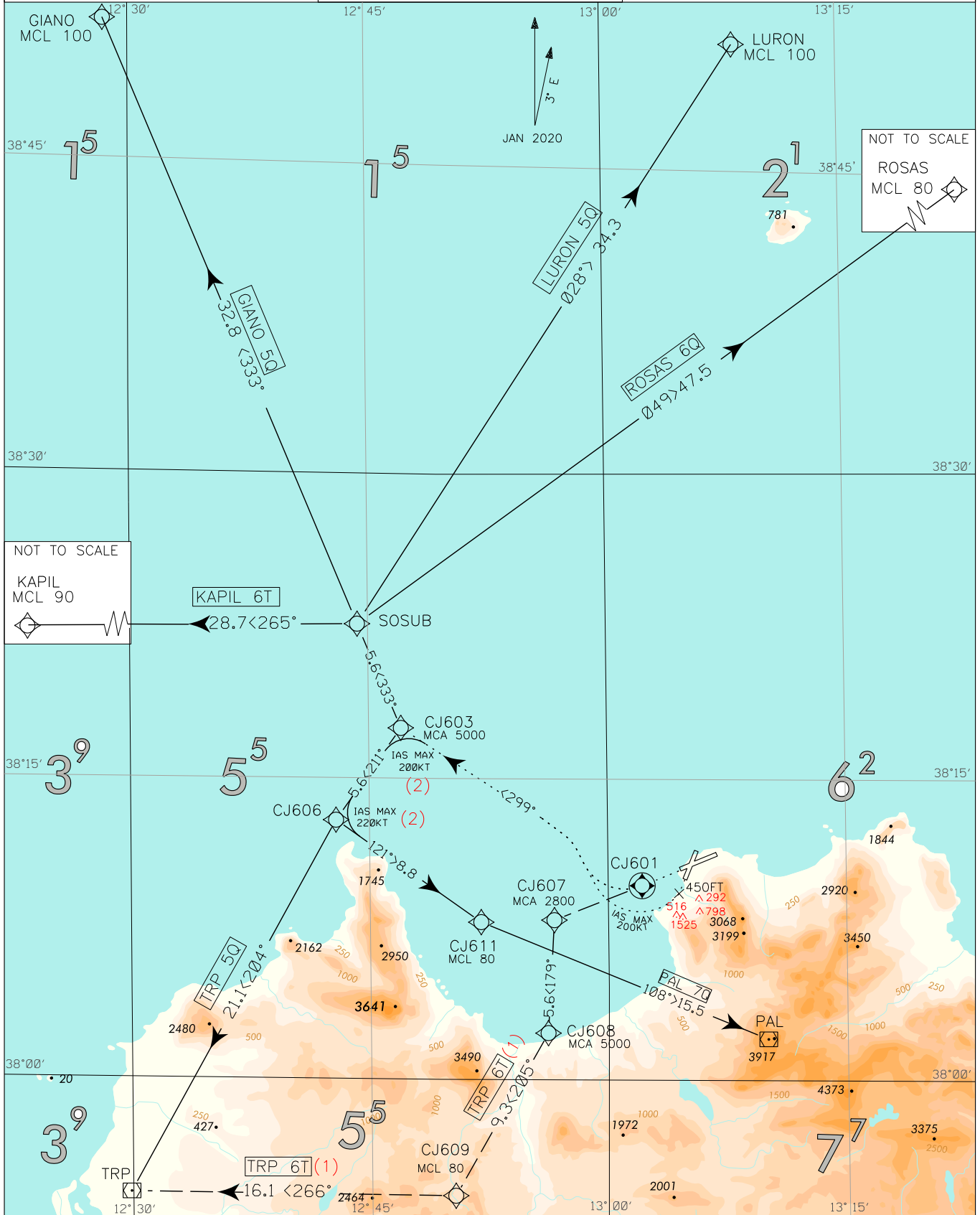


FREQUENCIES TWR Raisi TWR 119.050 APP Palermo APP/Radar 120.200 (118.650) ATIS Palermo ATIS 123.875		<h1>SID RNAV 1</h1> <h2>RWY 20/25</h2>	<h1>PALERMO/P. RAISI</h1>
			TRANSITION ALT 5000

CHANGE: SID PAL 70 UPDATED



LEGEND - - - - - Initial climb ——— SID - - - - - SID ATC Discretion ⚡ Not to Scale	SCALE 1:500,000 0 5 10 NM 2 5 10 15 Km BEARINGS TRACKS AND RADIAL ARE MAGNETIC ALTITUDES AND ELEVATIONS ARE IN FEET DISTANCES IN NAUTICAL MILES	REMARKS (1) Only for RWY 25 departure (2) Speed restriction for PAL 70 only (3) Relevant obstacles located SW of AD. Pilots shall adopt a minimum climb gradient in accordance with ICAO Annex 6 provisions for a safe obstacle overflying. Such climb gradient shall be maintained in any foreseeable circumstance.
---	---	---

MNM SECT ALT ARP 7700 5293
--

PALERMO / Punta Raisi**ICP/SID RNAV 1 RWY 20 / 25****INITIAL CLIMB PROCEDURE RWY 25****Remark: SID TRP 6T excluded**

Minimum Climb Gradient 5% (300 ft/NM).

Path Terminator	Waypoint Identifier	Fly Over	Course °M(°T)	Magnetic Variation	Distance (NM)	Turn Direction	Altitude (ft)	Speed Limit (kt)	Navigation Specification
CF	CJ601	Y	244° (246.9°)	3°	-	-	-	-	RNAV1
CF	CJ603	-	299° (302°)	3°	-	R	+5000	-	RNAV1

INITIAL CLIMB PROCEDURE RWY 20

1. Minimum Climb Gradient 8.7% (530 ft/NM) until crossing 1000ft then 5% (300 ft/NM).

Remark:**Significant obstacles situated SW of the Aerodrome.****Pilots shall adopt a minimum climb gradient in accordance with ICAO Annex 6 provisions for a safe obstacles overflying.****Such minimum climb gradient shall be maintained in any foreseeable circumstance.**

Path Terminator	Waypoint Identifier	Fly Over	Course °M(°T)	Magnetic Variation	Distance (NM)	Turn Direction	Altitude (ft)	Speed Limit (kt)	Navigation Specification
CA	-	-	201° (203.9°)	3°	-	-	+450	-	RNAV1
CF	CJ603	-	299° (302°)	3°	-	R	+5000	-200	RNAV1

SID RNAV 1 RWY 20 / 25 DESCRIPTION

Initial climb procedure executed:

GIANO 5Q

Path Terminator	Waypoint Identifier	Fly Over	Course °M(°T)	Magnetic Variation	Distance (NM)	Turn Direction	Altitude (ft)	Speed Limit (kt)	Navigation Specification
IF	CJ603	-	-	-	-	-	+5000	-	RNAV1
TF	SOSUB	-	333° (335.8°)	-	5.6	-	-	-	RNAV1
TF	GIANO	-	333° (335.8°)	-	32.8	-	+FL100	-	RNAV1

KAPIL 6T

Path Terminator	Waypoint Identifier	Fly Over	Course °M(°T)	Magnetic Variation	Distance (NM)	Turn Direction	Altitude (ft)	Speed Limit (kt)	Navigation Specification
IF	CJ603	-	-	-	-	-	+5000	-	RNAV1
TF	SOSUB	-	333° (335.8°)	-	5.6	-	-	-	RNAV1
TF	KAPIL	-	265° (268.4°)	-	28.7	-	+FL90	-	RNAV1

LURON 5Q

Path Terminator	Waypoint Identifier	Fly Over	Course °M(°T)	Magnetic Variation	Distance (NM)	Turn Direction	Altitude (ft)	Speed Limit (kt)	Navigation Specification
IF	CJ603	-	-	-	-	-	+5000	-	RNAV1
TF	SOSUB	-	333° (335.8°)	-	5.6	-	-	-	RNAV1
TF	LURON	-	028° (031.4°)	-	34.3	-	+FL100	-	RNAV1

PAL 7Q

Path Terminator	Waypoint Identifier	Fly Over	Course °M(°T)	Magnetic Variation	Distance (NM)	Turn Direction	Altitude (ft)	Speed Limit (kt)	Navigation Specification
IF	CJ603	-	-	-	-	-	+5000	-200	RNAV1
TF	CJ606	-	211° (213.8°)	-	5.6	L	-	-220	RNAV1
TF	CJ611	-	121° (123.8°)	-	8.8	L	+FL80	-	RNAV1
TF	PAL	-	108° (110.8°)	-	15.5	-	-	-	RNAV1

ROSAS 6Q

Path Terminator	Waypoint Identifier	Fly Over	Course °M(°T)	Magnetic Variation	Distance (NM)	Turn Direction	Altitude (ft)	Speed Limit (kt)	Navigation Specification
IF	CJ603	-	-	-	-	-	+5000	-	RNAV1
TF	SOSUB	-	333° (335.8°)	-	5.6	-	-	-	RNAV1
TF	ROSAS	-	049° (052.5°)	-	47.5	-	+FL80	-	RNAV1

TRP 5Q

Path Terminator	Waypoint Identifier	Fly Over	Course °M(°T)	Magnetic Variation	Distance (NM)	Turn Direction	Altitude (ft)	Speed Limit (kt)	Navigation Specification
IF	CJ603	-	-	-	-	-	+5000	-	RNAV1
TF	CJ606	-	211° (213.8°)	-	5.6	L	-	-	RNAV1
TF	TRP	-	204° (207.4°)	-	21.1	-	-	-	RNAV1

TRP 6T (ATC Discretion) – RWY 25 DEPARTURE ONLY

Initial Climb procedure included in tabular coding

1. Minimum climb gradient: 6.6% (400 ft/NM)

Path Terminator	Waypoint Identifier	Fly Over	Course °M(°T)	Magnetic Variation	Distance (NM)	Turn Direction	Altitude (ft)	Speed Limit (kt)	Navigation Specification
CF	CJ601	Y	244° (246.9°)	3°	-	-	-	-	RNAV1
TF	CJ607	-	244° (246.9°)	-	-	-	+2800	-	RNAV1
TF	CJ608	-	179° (181.7°)	-	5.6	L	+5000	-	RNAV1
TF	CJ609	-	205° (208.3°)	-	9.3	-	+FL80	-	RNAV1
TF	TRP	-	266° (269.6°)	-	16.1	R	-	-	RNAV1

WAYPOINT LIST

Waypoint Identifier	Coordinates
CJ601	38°09'32.34" N 013°02'27.62" E
CJ603	38°17'07.90" N 012°46'59.57" E
CJ606	38°12'29.01" N 012°43'02.66" E
CJ607	38°07'43.86" N 012°56'58.50" E
CJ608	38°02'05.93" N 012°56'45.67" E
CJ609	37°53'53.93" N 012°51'10.98" E
CJ611	38°07'32.96" N 012°52'21.77" E

Intenzionalmente bianca

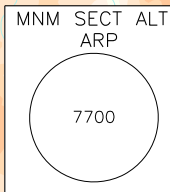
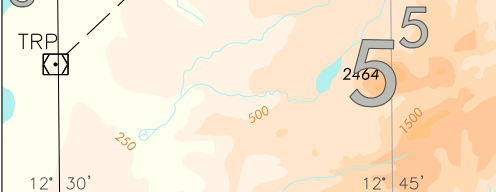
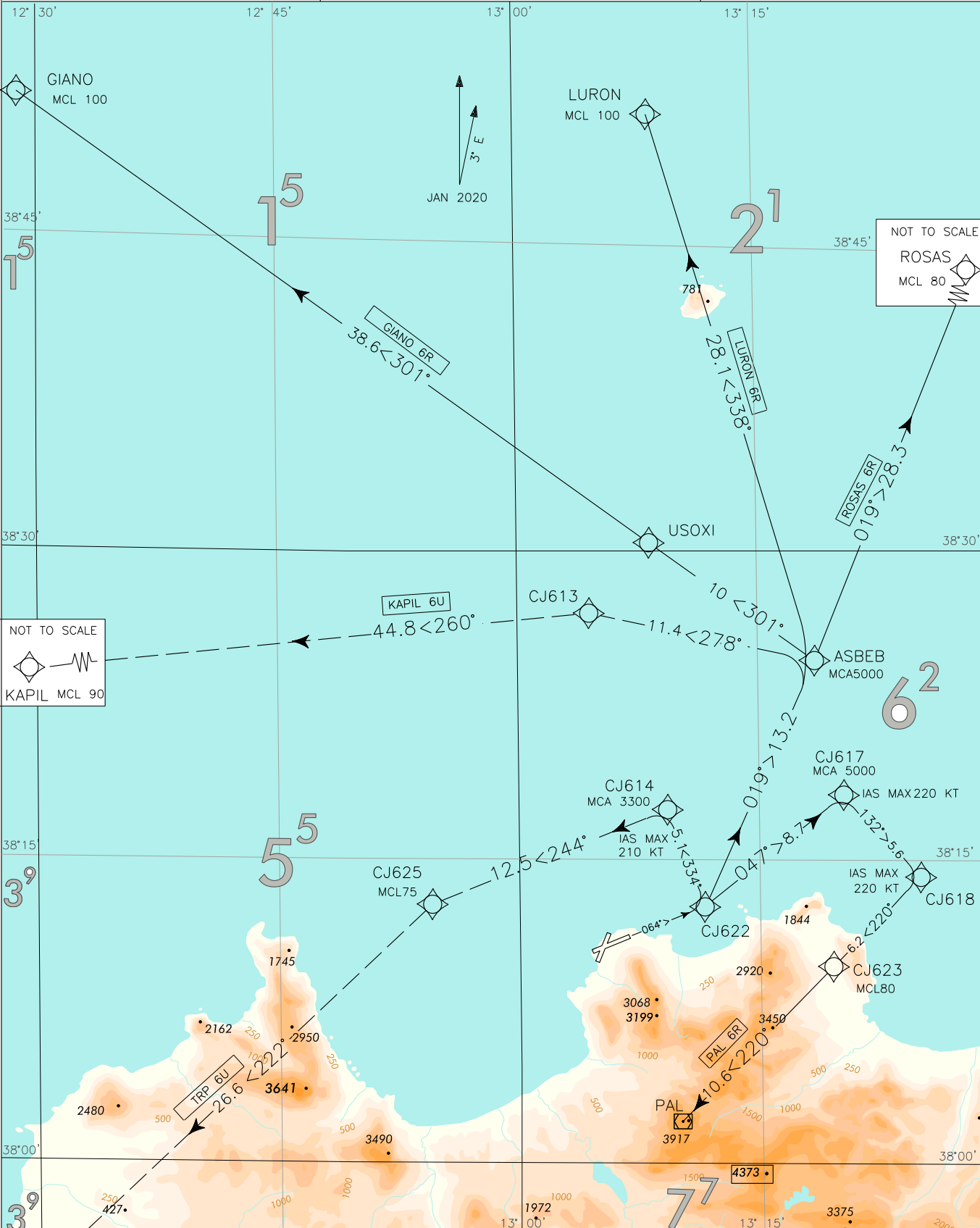
Intentionally left blank

DOC. 8168 - ED. 6 - 2014 - AMDT 7
CHANGE: MAG VAR UPDATED AND RENUMBERED CHART

FREQUENCIES	
TWR Raisi TWR	119.050
APP Palermo APP/Radar	120.200 (118.650)
ATIS Palermo ATIS	123.875

SID RNAV 1 RWY 07

PALERMO/P. RAISI
TRANSITION ALT 5000



BEARINGS TRACKS AND RADIAL ARE MAGNETIC
ALTITUDES AND ELEVATIONS ARE IN FEET
DISTANCES IN NAUTICAL MILES
SCALE 1:500.000

LEGEND	
	Sid
	ATC Discretion
	Not to Scale

PALERMO / Punta Raisi**SID RNAV 1 RWY 07****GIANO 6R**

Minimum climb gradient 6% (360 ft/NM)

Path Terminator	Waypoint Identifier	Fly Over	Course °M(°T)	Magnetic Variation	Distance (NM)	Turn Direction	Altitude (ft)	Speed Limit (kt)	Navigation Specification
CF	CJ622	-	064°(066.9°)	3°	-	-	-	-	RNAV1
TF	ASBEB	-	019°(022.7°)	-	13.2	-	+5000	-	RNAV1
TF	USOXI	-	301°(304.3°)	-	10.0	L	-	-	RNAV1
TF	GIANO	-	301°(304.3°)	-	38.6	-	+FL100	-	RNAV1

KAPIL 6U (ATC Discretion)

Minimum climb gradient 6% (360 ft/NM)

Path Terminator	Waypoint Identifier	Fly Over	Course °M(°T)	Magnetic Variation	Distance (NM)	Turn Direction	Altitude (ft)	Speed Limit (kt)	Navigation Specification
CF	CJ622	-	064°(066.9°)	3°	-	-	-	-	RNAV1
TF	ASBEB	-	019°(022.7°)	-	13.2	-	+5000	-	RNAV1
TF	CJ613	-	278°(280.8°)	-	11.4	L	-	-	RNAV1
TF	KAPIL	-	260°(263.1°)	-	44.8	-	+FL90	-	RNAV1

LURON 6R

Minimum climb gradient 6% (360 ft/NM)

Path Terminator	Waypoint Identifier	Fly Over	Course °M(°T)	Magnetic Variation	Distance (NM)	Turn Direction	Altitude (ft)	Speed Limit (kt)	Navigation Specification
CF	CJ622	-	064°(066.9°)	3°	-	-	-	-	RNAV1
TF	ASBEB	-	019°(022.7°)	-	13.2	-	+5000	-	RNAV1
TF	LURON	-	338°(341.6°)	-	28.1	-	+FL100	-	RNAV1

PAL 6R

Minimum climb gradient 6.6% (400 ft/NM)

Path Terminator	Waypoint Identifier	Fly Over	Course °M(°T)	Magnetic Variation	Distance (NM)	Turn Direction	Altitude (ft)	Speed Limit (kt)	Navigation Specification
CF	CJ622	-	064°(066.9°)	3°	-	-	-	-	RNAV1
TF	CJ617	-	047°(050.1°)	-	8.7	-	+5000	-220	RNAV1
TF	CJ618	-	132°(135.8°)	-	5.6	-	-	-220	RNAV1
TF	CJ623	-	220°(223.3°)	-	6.2	-	+FL80	-	RNAV1
TF	PAL	-	220°(223.3°)	-	10.6	-	-	-	RNAV1

ROSAS 6R

Minimum climb gradient 6% (360 ft/NM)

Path Terminator	Waypoint Identifier	Fly Over	Course °M(°T)	Magnetic Variation	Distance (NM)	Turn Direction	Altitude (ft)	Speed Limit (kt)	Navigation Specification
CF	CJ622	-	064°(066.9°)	3°	-	-	-	-	RNAV1
TF	ASBEB	-	019°(022.7°)	-	13.2	-	+5000	-	RNAV1
TF	ROSAS	-	019°(022.7°)	-	28.3	-	+FL80	-	RNAV1

TRP 6U (ATC Discretion)

Minimum climb gradient 6% (360 ft/NM)

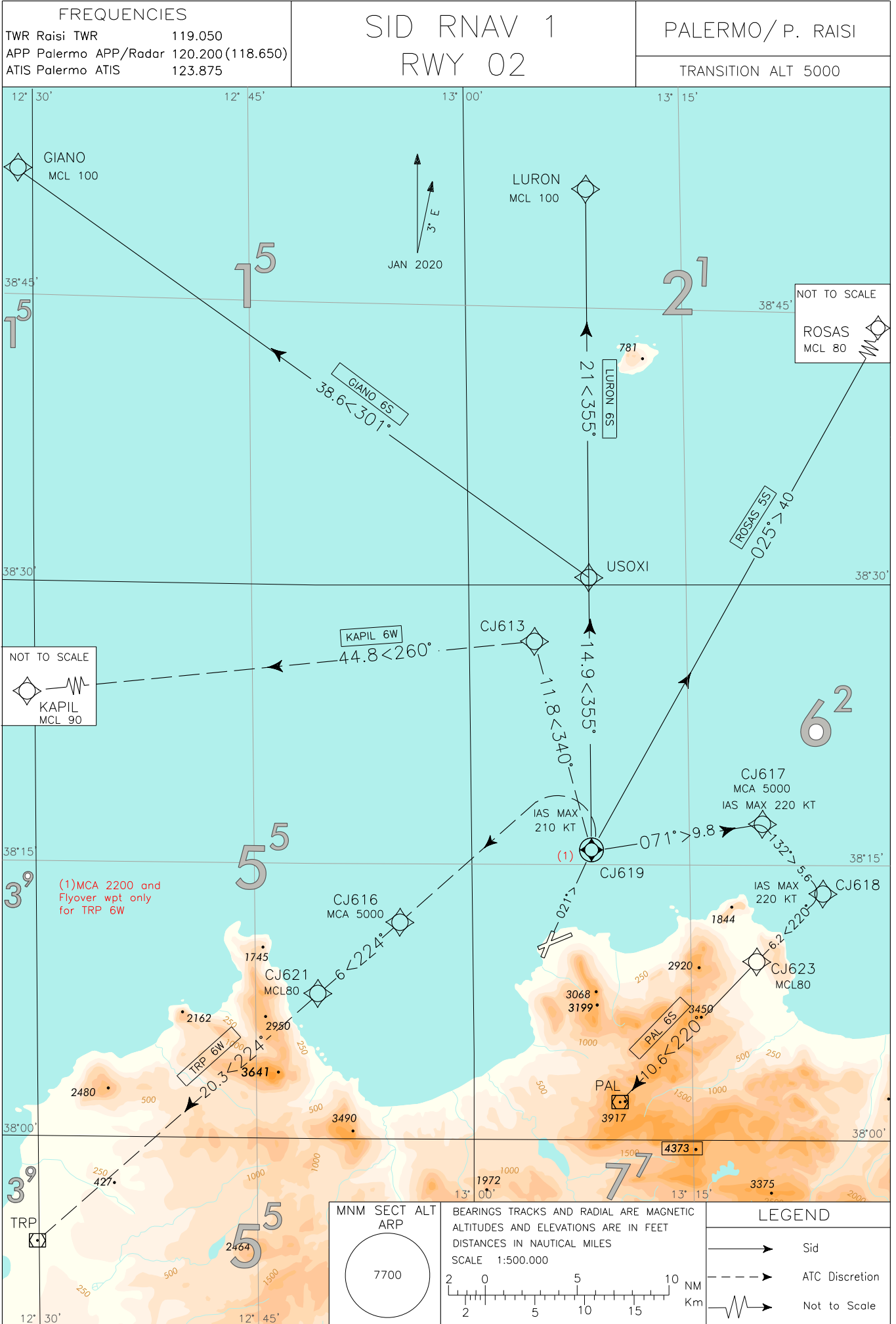
Path Terminator	Waypoint Identifier	Fly Over	Course °M(°T)	Magnetic Variation	Distance (NM)	Turn Direction	Altitude (ft)	Speed Limit (kt)	Navigation Specification
CF	CJ622	-	064°(066.9°)	3°	-	-	-	-	RNAV1
TF	CJ614	-	334°(337°)	-	5.1	L	+3300	-210	RNAV1
TF	CJ625	-	244°(247°)	-	12.5	L	+FL75	-	RNAV1
TF	TRP	-	222°(225.4°)	-	26.6	-	-	-	RNAV1

WAYPOINT LIST

Waypoint Identifier	Coordinates
CJ613	38°26'59.99 N 013°04'05.40 E
CJ614	38°17'23.03 N 013°09'17.64 E
CJ617	38°18'16.22 N 013°20'18.77 E
CJ618	38°14'16.54 N 013°25'14.56 E
CJ622	38°12'41.49 N 013°11'49.55 E
CJ623	38°09'47.60 N 013°19'53.02 E
CJ625	38°12'28.42 N 012°54'42.73 E

DOC. 8168 - ED. 6 - 2014 - AMDT 7

CHANGE: MAG VAR UPDATED AND RENUMBERED CHART



PALERMO / Punta Raisi**SID RNAV 1 RWY 02****GIANO 6S**

Minimum climb gradient until crossing 1500FT (6%-365 ft/NM)

Path Terminator	Waypoint Identifier	Fly Over	Course °M(°T)	Magnetic Variation	Distance (NM)	Turn Direction	Altitude (ft)	Speed Limit (kt)	Navigation Specification
CF	CJ619	-	021°(023.9°)	3°	-	-	-	-	RNAV1
TF	USOXI	-	355°(358.3°)	-	14.9	-	-	-	RNAV1
TF	GIANO	-	301°(304.2°)	-	38.6	-	+FL100	-	RNAV1

KAPIL 6W (ATC Discretion)

Minimum climb gradient until crossing 1500FT (6%-365 ft/NM)

Path Terminator	Waypoint Identifier	Fly Over	Course °M(°T)	Magnetic Variation	Distance (NM)	Turn Direction	Altitude (ft)	Speed Limit (kt)	Navigation Specification
CF	CJ619	-	021°(023.9°)	3°	-	-	-	-	RNAV1
TF	CJ613	-	340°(343.7°)	-	11.8	-	-	-	RNAV1
TF	KAPIL	-	260°(263.1°)	-	44.8	-	+FL90	-	RNAV1

LURON 6S

Minimum climb gradient until crossing 1500FT (6%-365 ft/NM)

Path Terminator	Waypoint Identifier	Fly Over	Course °M(°T)	Magnetic Variation	Distance (NM)	Turn Direction	Altitude (ft)	Speed Limit (kt)	Navigation Specification
CF	CJ619	-	021°(023.9°)	3°	-	-	-	-	RNAV1
TF	USOXI	-	355°(358.3°)	-	14.9	-	-	-	RNAV1
TF	LURON	-	355°(358.3°)	-	21.0	-	+FL100	-	RNAV1

PAL 6S

Minimum climb gradient 6% (365 ft/NM)

Path Terminator	Waypoint Identifier	Fly Over	Course °M(°T)	Magnetic Variation	Distance (NM)	Turn Direction	Altitude (ft)	Speed Limit (kt)	Navigation Specification
CF	CJ619	-	021°(023.9°)	3°	-	-	-	-	RNAV1
TF	CJ617	-	071°(074.4°)	-	9.8	-	+5000	-220	RNAV1
TF	CJ618	-	132°(135.8°)	-	5.6	-	-	-220	RNAV1
TF	CJ623	-	220°(223.3°)	-	6.2	R	FL80	-	RNAV1
TF	PAL	-	220°(223.3°)	-	10.6	-	-	-	RNAV1

ROSAS 5S

Minimum climb gradient until crossing 1500FT (6%-365 ft/NM)

Path Terminator	Waypoint Identifier	Fly Over	Course °M(°T)	Magnetic Variation	Distance (NM)	Turn Direction	Altitude (ft)	Speed Limit (kt)	Navigation Specification
CF	CJ619	-	021°(023.9°)	3°	-	-	-	-	RNAV1
TF	ROSAS	-	025°(027.9)	-	40.0	-	+FL80	-	RNAV1

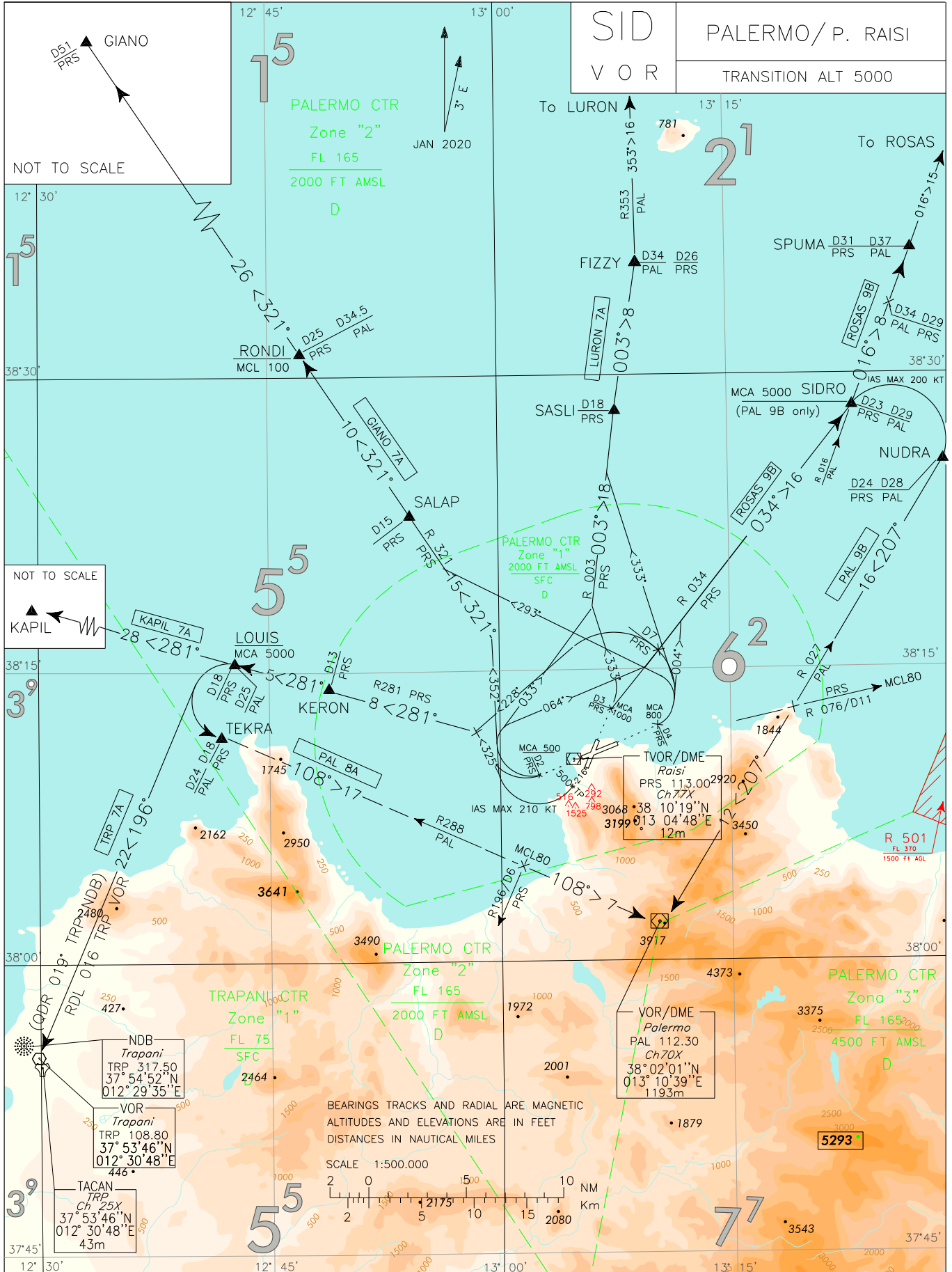
TRP 6W (ATC Discretion)

Minimum climb gradient 7.5% (450 ft/NM)

Path Terminator	Waypoint Identifier	Fly Over	Course °M(°T)	Magnetic Variation	Distance (NM)	Turn Direction	Altitude (ft)	Speed Limit (kt)	Navigation Specification
CF	CJ619	Y	021°(023.9°)	3°	-	-	+2200	-	RNAV1
DF	CJ616	-	-	-	-	L	+5000	-210	RNAV1
TF	CJ621	-	224°(227.4°)	-	6.0		+FL80	-	RNAV1
TF	TRP	-	224°(227.4°)	-	20.3	-	-	-	RNAV1

WAYPOINT LIST

Waypoint Identifier	Coordinates
CJ613	38°26'59.99 N 013°04'05.40 E
CJ616	38°11'33.21 N 012°55'12.70 E
CJ617	38°18'16.22 N 013°20'18.77 E
CJ618	38°14'16.54 N 013°25'14.56 E
CJ619	38°15'38.61 N 013°08'19.45 E
CJ621	38°07'30.18 N 012°49'37.58 E
CJ623	38°09'47.60 N 013°19'53.02 E



FREQUENCIES		
ATIS	Palermo ATIS	123.875
TWR	Raisi TWR	119.050
APP	Palermo APP/Radar	120.200 (118.650)

WARNING
 Relevant obstacles located SW of AD.
 Pilots shall adopt a minimum climb gradient in accordance with ICAO Annex 6 provisions for a safe overflying. Such climb gradient shall be maintained in any foreseeable circumstances

LEGEND	
----->	Initial climb
----->	SID
----->	Not to Scale

MNM	SECT	ALT
PRS	VOR	
5200		
090	270	
5500	7700	
360		

INITIAL CLIMB PROCEDURES**RWY 20**

After take-off continue on TR 216° until leaving 500 ft, then turn right (IAS MAX 210 KT during turn) until joining the assigned SID.

Minimum climb gradient: 8,7% (530 ft/NM) until leaving 1000 ft.

Remark:

Considerable obstacles situated SW of the aerodrome.

Pilots shall adopt a minimum climb gradient in accordance with ICAO Annex 6 provisions for a safe obstacles overflying. Such minimum climb gradient shall be maintained in any foreseeable circumstance.

RWY 25

After take off proceed on runway heading until 2 NM PRS DME (4 NM RAI DME), then turn right until joining the assigned SID.

MCA: 2 NM PRS DME (4 NM RAI DME): 500 FT

RWY 02

After take-off proceed runway heading until 3 NM PRS DME (2.2 NM ITO DME), then proceed on assigned SID.

Minimum climb gradient: 7,5% (450 ft/NM).

MCA: 3NM PRS DME (2.2 NM ITO DME) 1000 FT

RWY 07

After take off proceed on runway heading until 4 NM PRS DME (2 NM RAI DME), then turn left until joining the assigned SID.

Minimum climb gradient: 6,1% (370 ft/NM)

MCA: 4 NM PRS DME (2 NM RAI DME) 800 FT

SID DESCRIPTION

Initial climb procedure executed:

GIANO 7A

Join RDL 321 PRS VOR and proceed via SALAP – RONDI – GIANO.

MCL: RONDI FL100

KAPIL 7A

Join RDL 281 PRS VOR and proceed via KERON – LOUIS – KAPIL.

MCA: LOUIS 5000 FT

LURON 7A

Join RDL 003 PRS VOR and proceed via SASLI – FIZZY, then join RDL 353 PAL VOR bound to LURON.

PAL 8A (ATC Discretion) (1)

Join RDL 281 PRS VOR and proceed via KERON – LOUIS, then turn left bound to TEKRA joining RDL 288 PAL VOR (TR 108°) bound to PAL VOR.

MCA/MCL: LOUIS 5000 FT; INT RDL 288 PAL VOR/RDL 196 PRS VOR FL 80

PAL 9B (1)

Join RDL 034 PRS VOR bound to SIDRO, then turn right (IAS MAX 200 KT) until joining RDL 027 PAL VOR (TR 207°) and proceed via NUDRA – PAL VOR.

MCA/MCL: SIDRO 5000 FT; INT RDL 027 PAL VOR/RDL 076 PRS VOR FL 80

ROSAS 9B

Join RDL 034 PRS VOR bound to SIDRO then intercept and follow RDL 016 PAL VOR and proceed via SPUMA – ROSAS.

TRP 7A

Join RDL 281 PRS VOR and proceed via KERON – LOUIS, then turn left until joining RDL 016 TRP VOR (TR 196°) or QDR 019° TRP NDB (TR 199°) bound to TRP VOR/NDB.

MCA: LOUIS 5000 FT

(1) REMARK

Departing aircraft may turn left before reaching LOUIS (SID PAL 8A) or right before reaching SIDRO (SID PAL 9B) provided that 5000 ft altitude has crossed climbing, ATC Unit has been advised and appropriate clearance has been received. Anyway RDL 196 PRS VOR or RDL 076 PRS VOR shall be crossed at FL 80 or above.