

SCALE 1:250.000



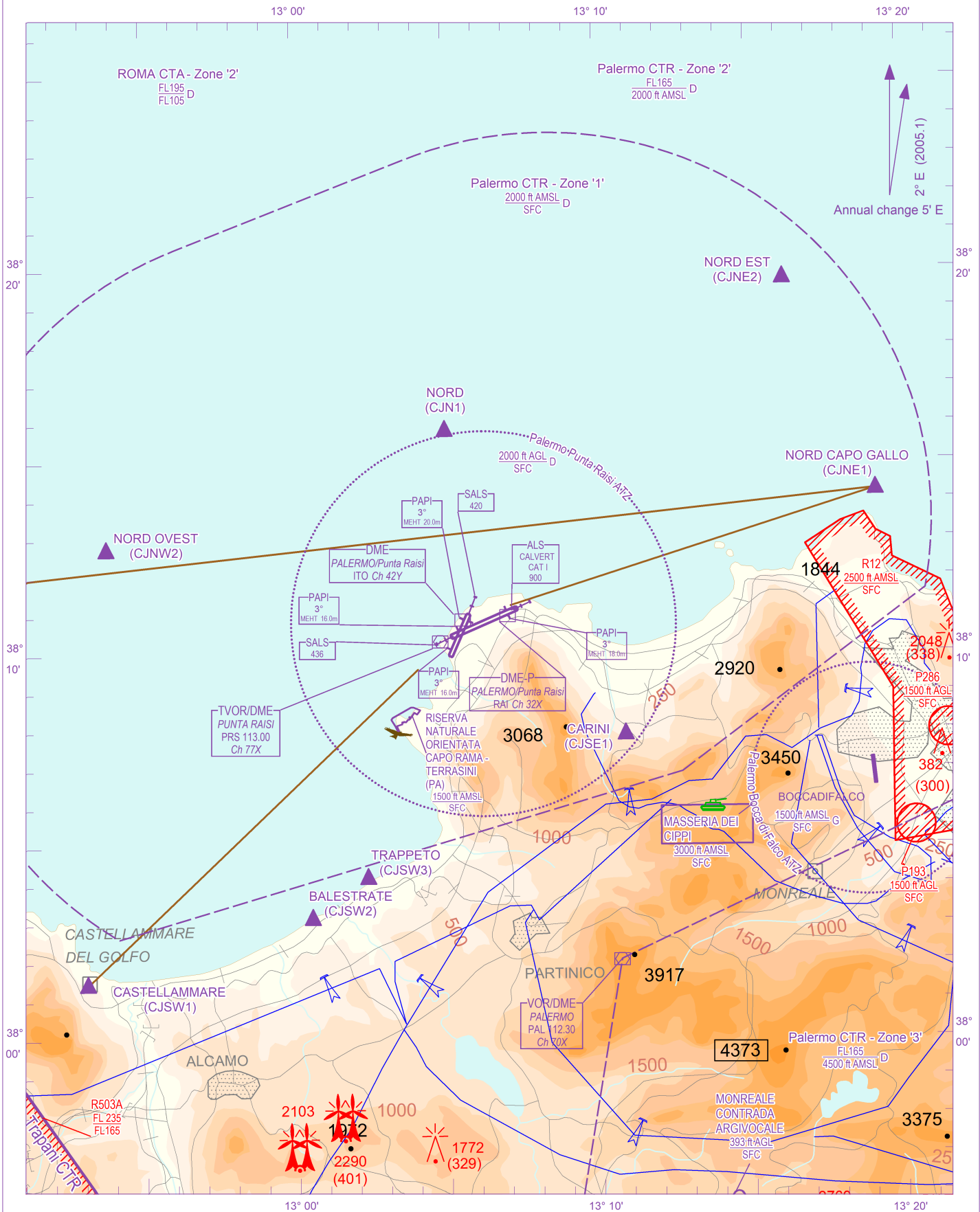
FIS Roma Information 129.575
 APP Palermo APP 120.200 (118.650)
 APP Palermo Radar 120.200 (118.650)
 TWR Raisi TWR 119.050
 ATIS Palermo ATIS 123.875

AD ELEV
 65

L
 I
 C
 J

PALERMO/PUNTA RAISI

CHANGE: New VRPs 'NORD (CJN1)', 'NORD EST (CJNE2)' and 'NORD OVEST (CJNW2)' and updated chart



AIRSPACE CLASSIFICATION See AIP ENR 1.4	REMARK	WARNING
TRANSITION ALT 5000 FT		
ELEV AND ALT IN FT IF NOT OTHERWISE INDICATED		

ICAO - INSTRUMENT APPROACH CHART

AD 2 LICJ 5-5

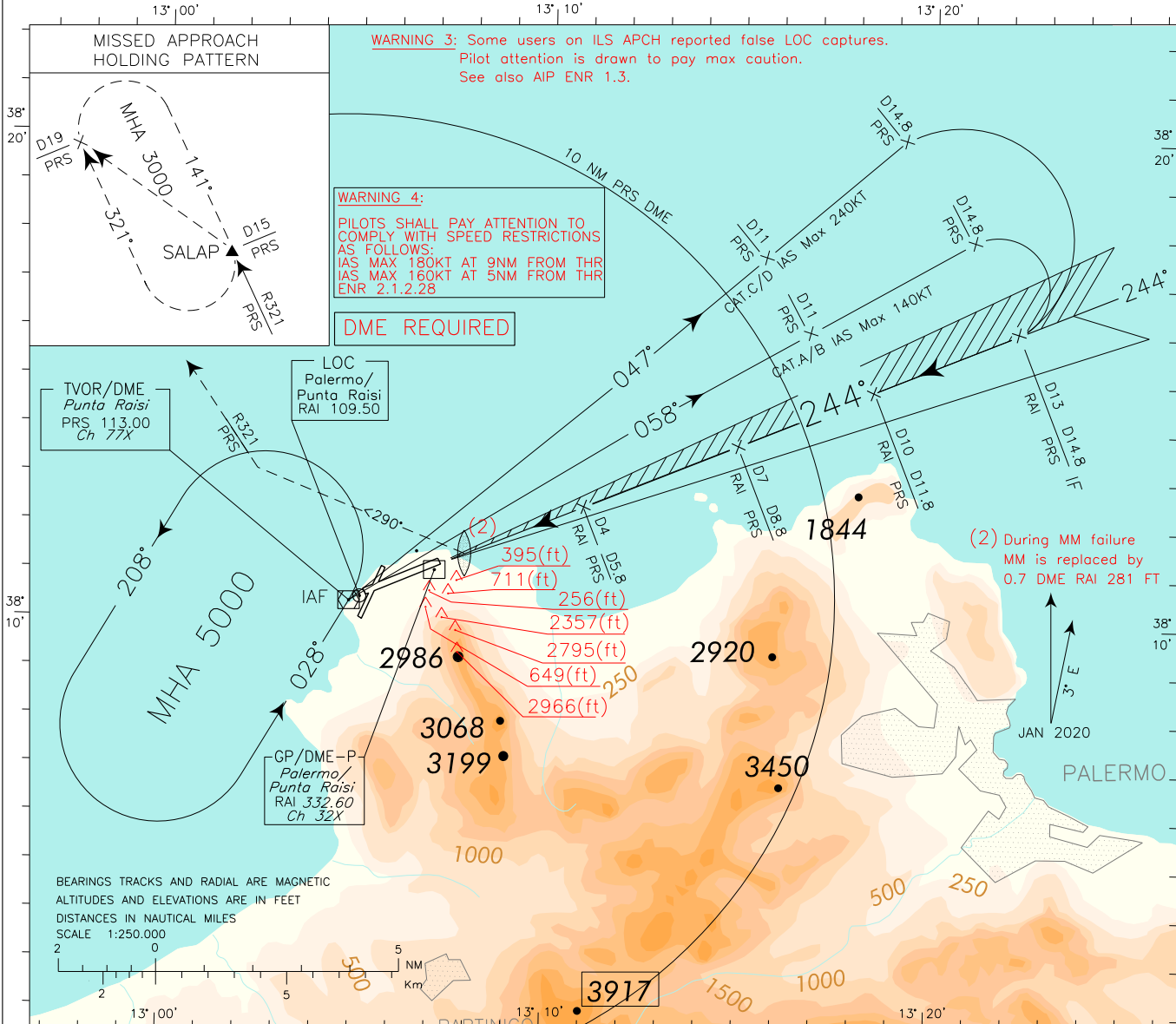
WARNING 1: Landing on RWY 02 is allowed HJ in VMC only. Landing on RWY 02 is forbidden HN.
WARNING 2: For typographical reasons the hazard beacons located South of AD are not represented.

APP Palermo APP/Radar 120.200 (118.650)
 TWR Raisi TWR 119.050
 ATIS Palermo ATIS 123.875

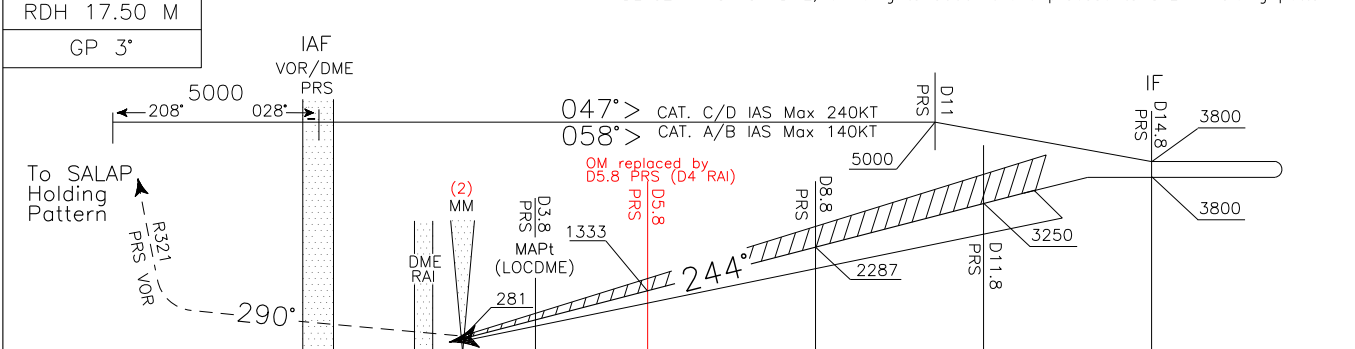
AD ELEV 65
 PALERMO/PUNTA RAISI
 ILS - Y RWY 25

DOC.8168-ED.6-2014-AMDT 7

CHANGE: MAG VAR UPDATED



TRANSITION ALT 5000
 MISSED APPROACH: As soon as possible turn right on TR 290° to join and follow RDL 321 PRS VOR DME, climbing to 3000 ft and proceed to SALAP Holding pattern



D7	D6	D5	D4	D3	D2	D1	THR	D1	D2	D3	D4	D5	D6	D7	D8	D9	D10	D11	D12	D13	D14	D15	D16
RAI DME												RAI DME											
D5	D4	D3	D2	D1	D1	D2	D3	D4	D5	D6	D7	D8	D9	D10	D11	D12	D13	D14	D15	D16	D17	D18	
PRS DME												PRS DME											

OCA (OCH)		A	B	C	D	(1) Circling Sector: North-West of the field only 	FT PER MIN	GS	D4 RAI-MAPt	MAPt-THR	ALT(HGT)	MNM SECT	ALT	
STRAIGHT IN APPROACH	ILSDME	500 (450)					530	100	1 : 12	1 : 07	6	1969(1919)		
	LOCDME	750 (700)					636	120	1 : 00	0 : 56	5	1651(1601)		
	CIRCLING (1)		1000 (935)				741	140	0 : 52	0 : 48	4	1333(1283)		
							847	160	0 : 45	0 : 42	3	1013(963)		
						953	180	0 : 40	0 : 37	2	695(645)			

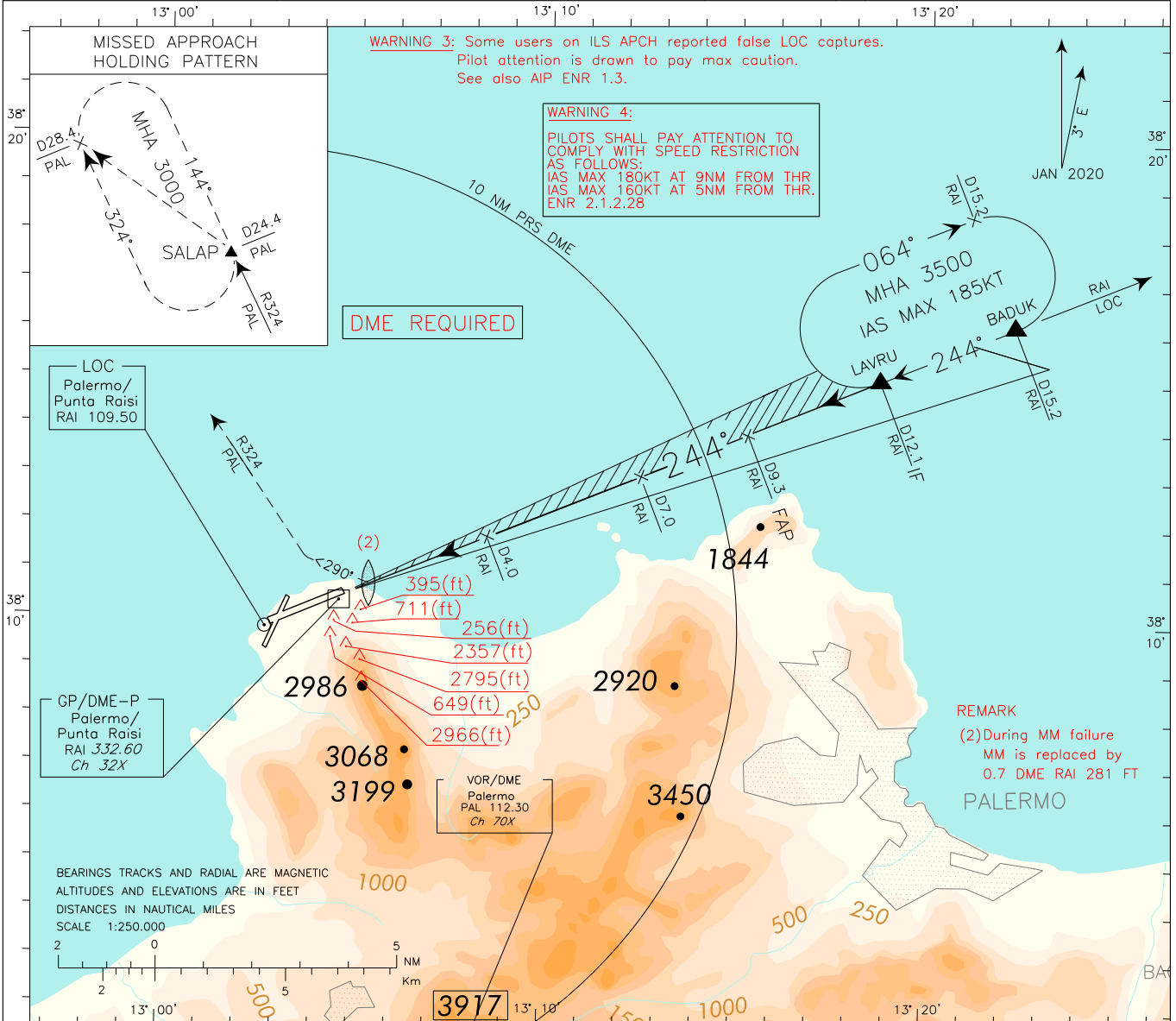
ICAO - INSTRUMENT APPROACH CHART

AD 2 LICJ 5-7

DOC.8168-ED.6-2014-AMDT 7

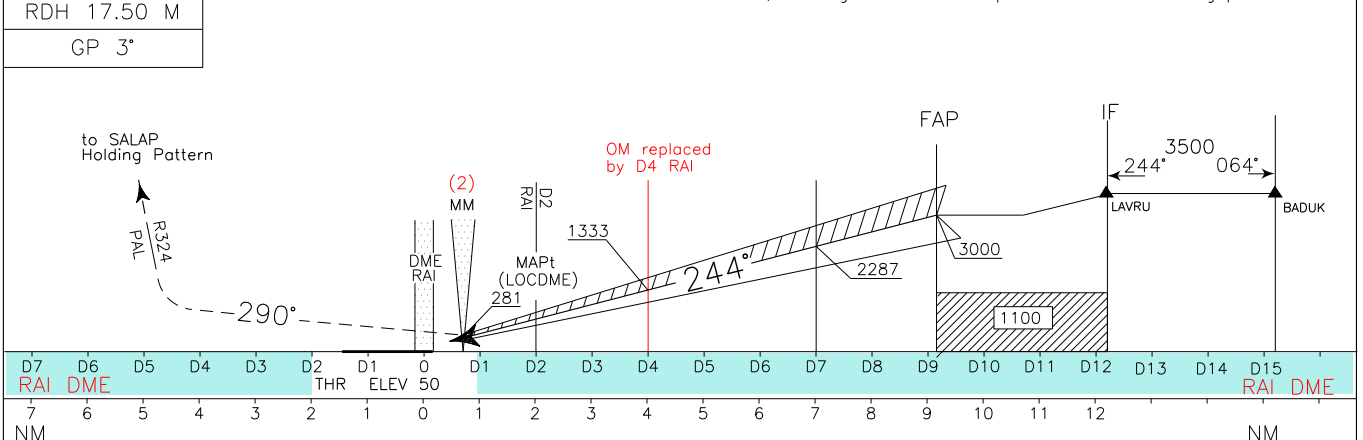
CHANGE: MAG VAR UPDATED

APP	Palermo APP/Radar	120.200 (118.650)	AD ELEV	LICJ	PALERMO/PUNTA RAISI
TWR	Raisi TWR	119.050	65	ILS- W	RWY 25
ATIS	Palermo ATIS	123.875			



TRANSITION ALT 5000
RDH 17.50 M
GP 3°

MISSED APPROACH: as soon as possible turn right on TR 290° to join and follow RDL 324 PAL VOR, climbing to 3000FT and proceed to SALAP Holding pattern



STRAIGHT IN APPROACH	ILS	OCA (OCH)				(1) Circling Sector: North-West of the field only	FT PER MIN	GS	D4 RAI-MAPt	MAPt-THR	ALT(HGT)	MNM SECT ALT PRS	VOR
		A	B	C	D								
STRAIGHT IN APPROACH	ILS	500 (450)				NOT ALLOWED	530	100	1 : 12	1 : 07	6 1969(1919)	5200	
	LOC/DME	750 (700)					636	120	1 : 00	0 : 56	5 1651(1601)		
CIRCLING (1)		1000 (935)					741	140	0 : 52	0 : 48	4 1333(1283)	5500	7700
		741	160	0 : 45	0 : 42		3 1013(963)						
							953	180	0 : 40	0 : 37	2 695(645)		

ICAO - INSTRUMENT APPROACH CHART

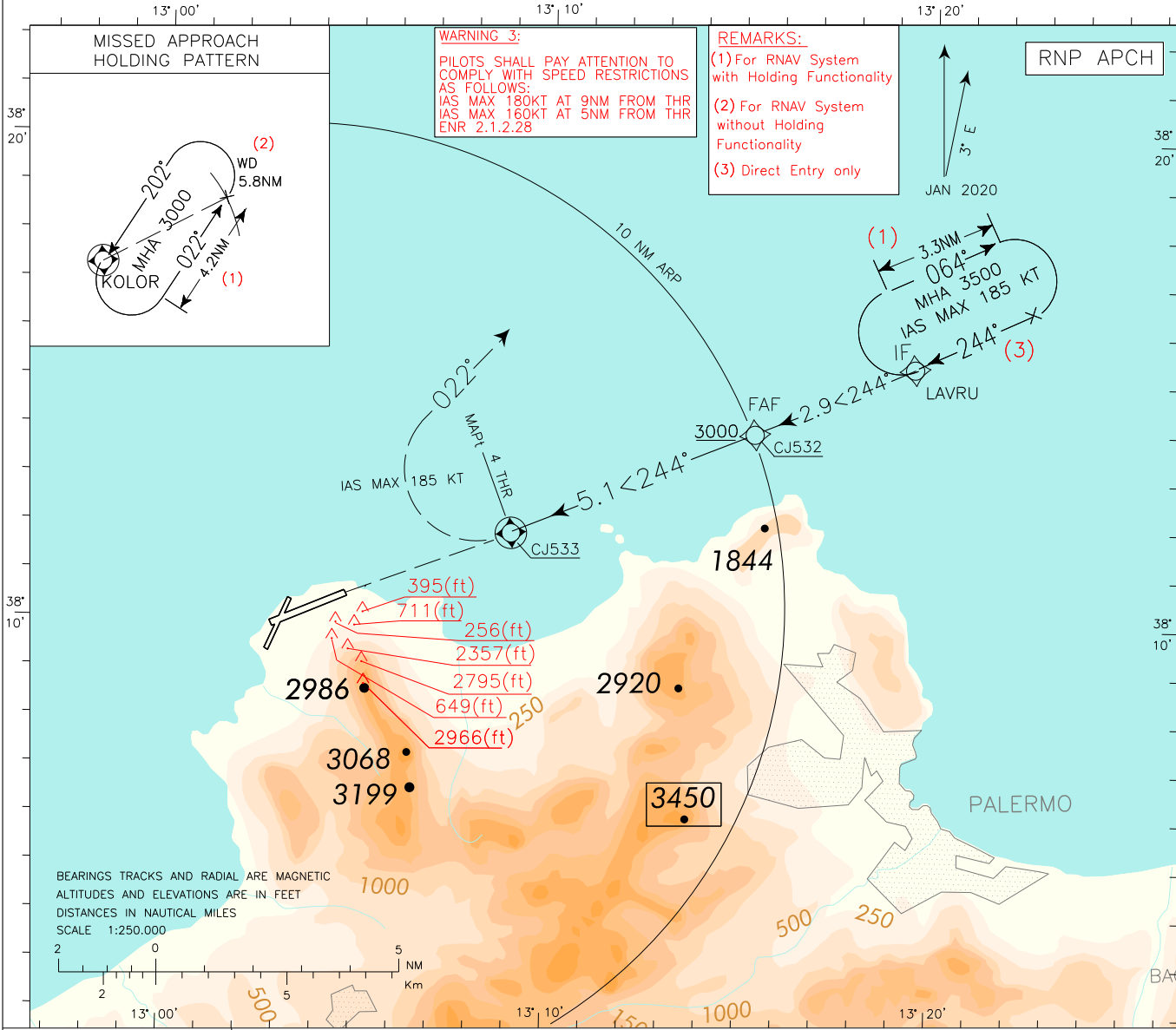
AD 2 LICJ 5-9

DOC.8168-ED.6-2014-AMDT 7

WARNING 1: Landing on Rwy 02 is allowed HJ in VMC only. Landing on Rwy 02 is forbidden HN.
WARNING 2: For typographical reasons the hazard beacons located South of AD are not represented.

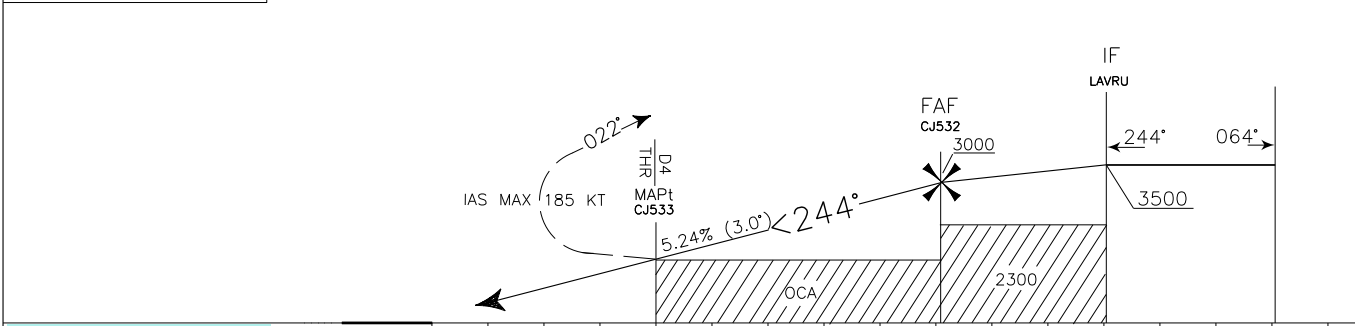
APP Palermo APP/Radar 120.200 (118.650)
 TWR Raisi TWR 119.050
 ATIS Palermo ATIS 123.875

AD ELEV 65
 L I C J
 PALERMO/P.RAISI
 RNP Z RWY 25



TRANSITION ALT 5000
 TCH 17.5 M

MISSED APPROACH: AT CJ533 climbing to 3000 FT turn right (IAS MAX 185 KT) to KOLOR on course 022° and hold



NM to THR 25	THR ELEV 50	0	D1	D2	D3	D4	D5	D6	D7	D8	D9	D10	D11	D12	D13	D14	D15	D16
												NM to THR 25						

NM To MAPt																		NM To MAPt	
STRAIGHT IN APPROACH	OCA (OCH)	A	B	C	D	(4) Circling Sectors: North-West of the field only	FT PER MIN	GS		DIST to MAPt	ALT(HGT)	NMN SECT ALT ARP	7700						
	LNAV	1380 (1330)					530	100		5	2970(2920)								
							636	120		4	2652(2602)								
							741	140		3	2334(2284)								
							847	160		2	2016(1966)								
CIRCLING (4)	1400 (1335)				953	180		1	1698(1648)										

ENAV - Roma

AIRAC effective date 20 APR 2023 (A3/23)

CHANGE: MAG VAR UPDATED, PRS VORDME INDICATIONS WITHDRAWN

TABULAR DESCRIPTION

Palermo RNP Z RWY25 – Instrument Approach Procedure

Path Terminator	Waypoint Identifier	Inbound Course °M (°T)	Leg Distance (NM) (1)	Timing(min.)/ Waypoint Distance (NM) (2)	Turn Direction	Minimum Altitude (FT)	Maximum Altitude (FL)	Speed Limit (kt)	Magnetic Variation (°)	Navigation Specification
HM (3)	LAVRU	244°(247°)	3.3	- / -	R	+3500	-	-185	3°	RNAV 1

Serial Number	Path Terminator	Waypoint Identifier	Fly Over	Course °M(°T)	Magnetic Variation	Distance (NM)	Turn Direction	Altitude (ft)	Speed Limit (kt)	VPA/ TCH	Navigation Specification
010	IF	LAVRU	-	-	-	-	-	+3500	-	-	RNAV 1
020	TF	CJ532	-	244°(247.0°)	-	2.9	-	+3000	-	-	RNP APCH
030	TF	CJ533	Y	244°(246.9°)	-	5.1	-	@1380	-	-	RNP APCH
-	-	THR25	-	-	-	-	-	+107.8	-	-3°/17.5M	-
040	CF	KOLOR	-	022°(025.2°)	3°	-	R	+3000	-185	-	RNP APCH
050	HM	KOLOR	Y	202°(205°)	-	-	L	+3000	-	-	RNAV 1

Path Terminator	Waypoint Identifier	Inbound Course °M (°T)	Leg Distance (NM) (1)	Timing(min.)/ Waypoint Distance (NM) (2)	Turn Direction	Minimum Altitude (FT)	Maximum Altitude (FL)	Speed Limit (kt)	Magnetic Variation (°)	Navigation Specification
HM	KOLOR	202°(205°)	4.2	- / 5.8	L	+3000	-	-	3°	RNAV 1

- (1) RNAV system with holding functionality
(2) RNAV system without holding functionality
(3) Direct Entry Only

WAYPOINT LIST
RNP Z RWY 25

Waypoint Identifier	Coordinates
CJ532	38°14'40.87" N 013°17'47.23" E
CJ533	38°12'41.24" N 013°11'49.58" E

TABULAR DESCRIPTION

Palermo RNP Y RWY25 (LPV only) – Instrument Approach Procedure

Path Terminator	Waypoint Identifier	Inbound Course °M (°T)	Leg Distance (NM) (1)	Timing(min.)/ Waypoint Distance (NM) (2)	Turn Direction	Minimum Altitude (FT)	Maximum Altitude (FL)	Speed Limit (kt)	Magnetic Variation (°)	Navigation Specification
HM	LAVRU	244°(247°)	3.3	-/-	R	3500	-	-185	3°	RNAV 1

Serial Number	Path Terminator	Waypoint Identifier	Fly Over	Course °M(°T)	Magnetic Variation	Distance (NM)	Turn Direction	Altitude (ft)	Speed Limit (kt)	VPA/ TCH	Navigation Specification
010	IF	LAVRU	-	-	-	-	-	+3500	-	-	RNAV1
020	TF	CJ532	-	244°(247.0°)	-	2.9	-	+3000	-	-	RNP APCH
030	TF	CJ534	Y	244°(246.9°)	-	7.3	-	-	-	-	RNP APCH
	-	THR25	-	-	-	-	-	+107.8	-	-3°/17.5M	-
040	CF	KOLOR	-	022°(025.2°)	3°	-	R	+3000	185	-	RNP APCH
050	HM	KOLOR	Y	202°(205°)	-	-	L	+3000	-	-	RNAV 1

Path Terminator	Waypoint Identifier	Inbound Course °M (°T)	Leg Distance (NM) (1)	Timing(min.)/ Waypoint Distance (NM) (2)	Turn Direction	Minimum Altitude (FT)	Maximum Altitude (FL)	Speed Limit (kt)	Magnetic Variation (°)	Navigation Specification
HM	KOLOR	202°(205°)	4.2	5.8	L	3000	-	-	3°	RNAV 1

- (1) RNAV system with holding functionality
(2) RNAV system without holding functionality

WAYPOINT LIST
RNP Y RWY25 (LPV only)

Waypoint Identifier	Coordinates
CJ532	38°14'40.87" N 013°17'47.23" E
CJ534	38°11'49.59" N 013°09'15.46" E

SBAS FAS DATA BLOCK LICJ RNP Y RWY25 (LPV only)

INPUT DATA	
PARAMETERS	VALUES
Operation Type	0
SBAS Provider	1
Airport Identifier	LICJ
Runway	25
Runway Direction	0
Approach Performance Designator	0
Route Indicator	Y
Reference Path Data Selector	0
Reference Path Identifier	E25A
LTP/FTP Latitude	381107.1880N
LTP/FTP Longitude	0130709.3955E
LTP/FTP Ellipsoidal Height (metres)	59.0
FPAP Latitude	381027.5400N
Delta FPAP Latitude (seconds)	-39.6480
FPAP Longitude	0130511.5100E
Delta FPAP Longitude (seconds)	-117.8855
Threshold Crossing Height (metres)	17.5
TCH Units Selector	1
Glidepath Angle (degrees)	3
Course Width (metres)	105
Length Offset (metres)	0
HAL (metres)	40
VAL (metres)	50

OUTPUT DATA	
Data Block	10 0A 03 09 0C 19 C8 00 01 35 32 05 68 2A 63 10 A7 53 A1 05 4E 16 40 CA FE 05 67 FC 5E 81 2C 01 64 00 C8 FA 78 48 6F 26
Calculated CRC Value	78486F26

Required Additional Data (not CRC wrapped)

Parameters	Values
ICAO Code	LI
LTP/FTP Orthometric Height (metres)	15.4
FPAP Orthometric Height (metres)	9.3

Intenzionalmente bianca

Intentionally left blank

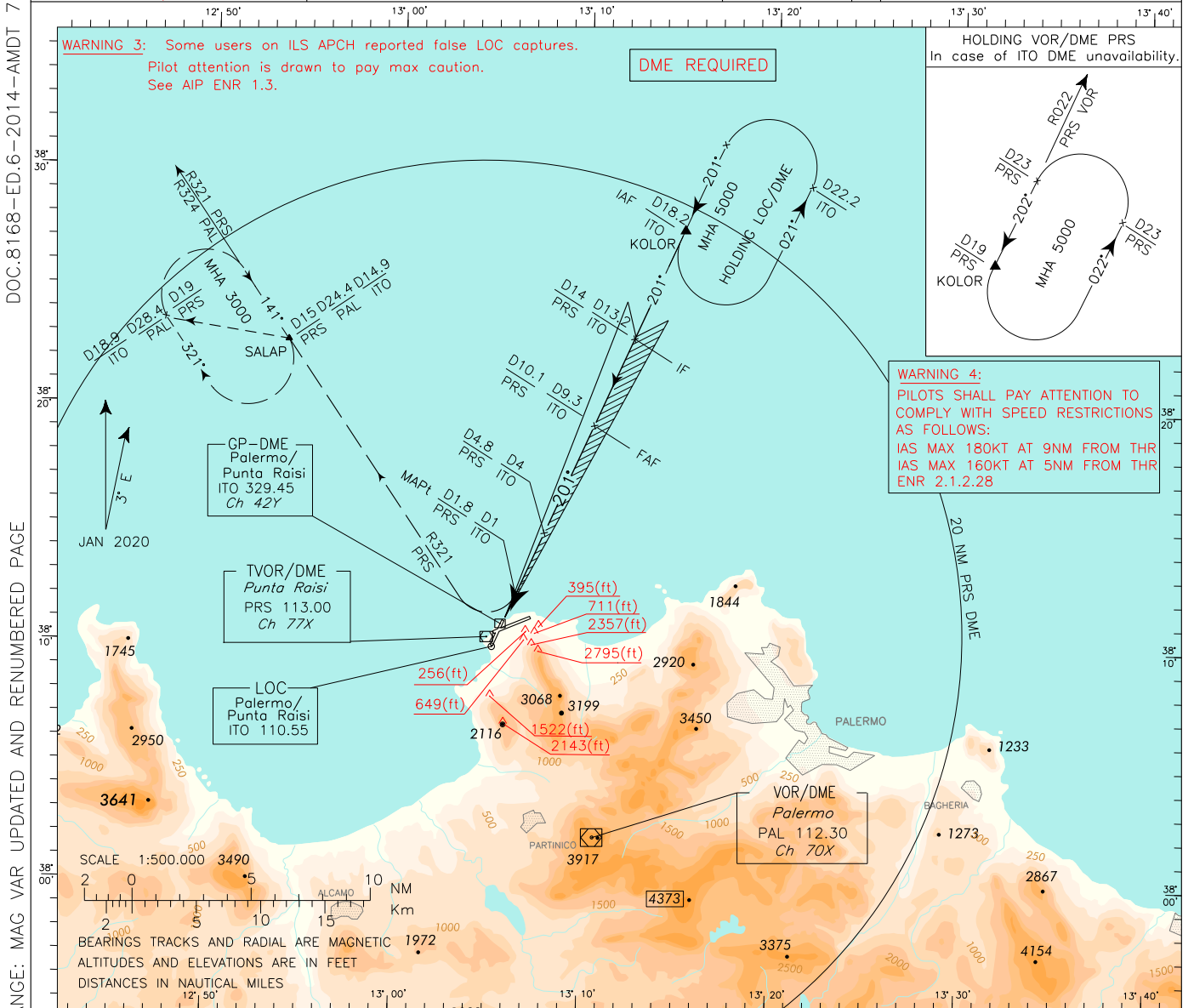
ICAO - INSTRUMENT APPROACH CHART

AD 2 LICJ 5-15

WARNING 1: Landing on RWY 02 is allowed HJ in VMC only. Landing on RWY 02 is forbidden HN.
WARNING 2: For typographical reasons the hazard beacons located South of AD are not represented.

APP	Palermo APP/Radar	120.200 (118.650)
TWR	Raisi TWR	119.050
ATIS	Palermo ATIS	123.875

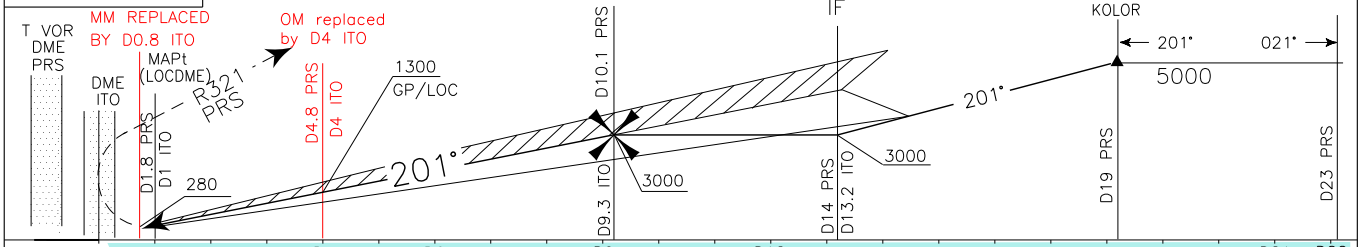
AD ELEV	65	LICJ	PALERMO/PUNTA RAISI
			ILS-Z RWY 20



DOC.8168-ED.6-2014-AMDT 7
 CHANGE: MAG VAR UPDATED AND RENUMBERED PAGE

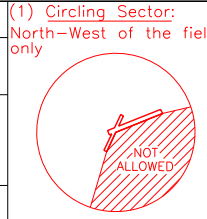
TRANSITION ALT 5000 MISSED APPROACH: as soon as possible turn right on RDL 321 PRS VOR (RDL 324 PAL VOR) climbing to 3000 ft and proceeding to SALAP holding pattern

RDH	17.37 M
GP	3°
LOC DME	5.2%

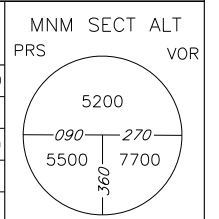


THR	0	D1	D2	D3	D4	D5	D6	D7	D8	D9	D10	D11	D12	D13	D14	D15	D16	D17	D18	D19	D20	D21	D22	D23
PRD	0	D1	D2	D3	D4	D5	D6	D7	D8	D9	D10	D11	D12	D13	D14	D15	D16	D17	D18	D19	D20	D21	D22	D23
DME																								

OCA (OCH)		A	B	C	D
STRAIGHT IN APPROACH	ILS	345(323)	355(333)	365(343)	375(353)
	LOC	450 (428)			
CIRCLING (1)		1000 (935)			



FT PER MIN	GS	4 ITO-MAPt	MAPt-THR	T	ALT(HGT)	MNM SECT ALT
530	100	3.00 NM	0.84 NM	6	1940(1918)	PRD VOR
640	120	1 : 30	0 : 25	5	1620(1598)	
740	140	1 : 17	0 : 22	4	1300(1278)	
850	160	1 : 08	0 : 19	3	980(958)	
950	180	1 : 00	0 : 17	2	660(638)	



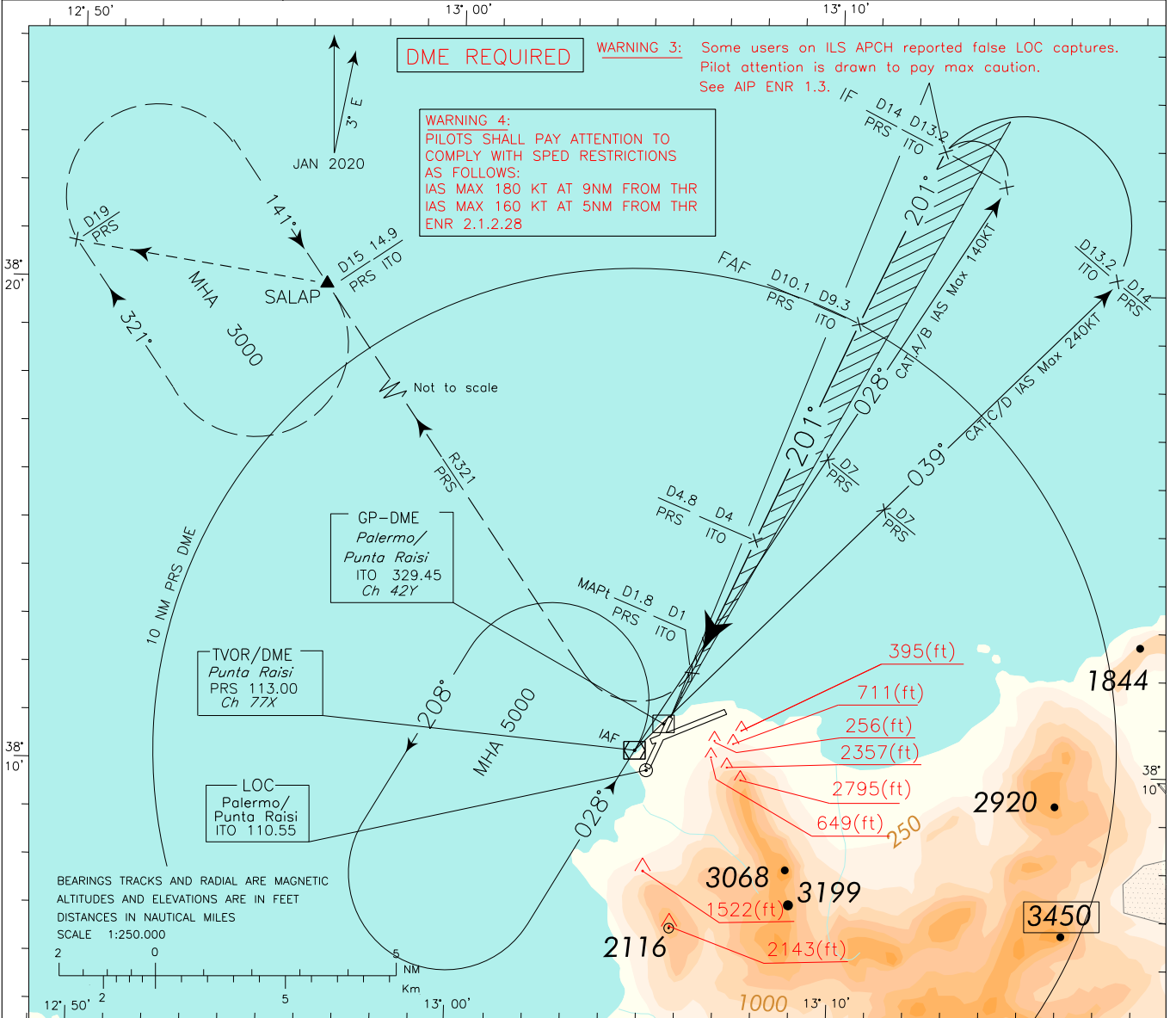
ICAO - INSTRUMENT APPROACH CHART

AD 2 LICJ 5-17

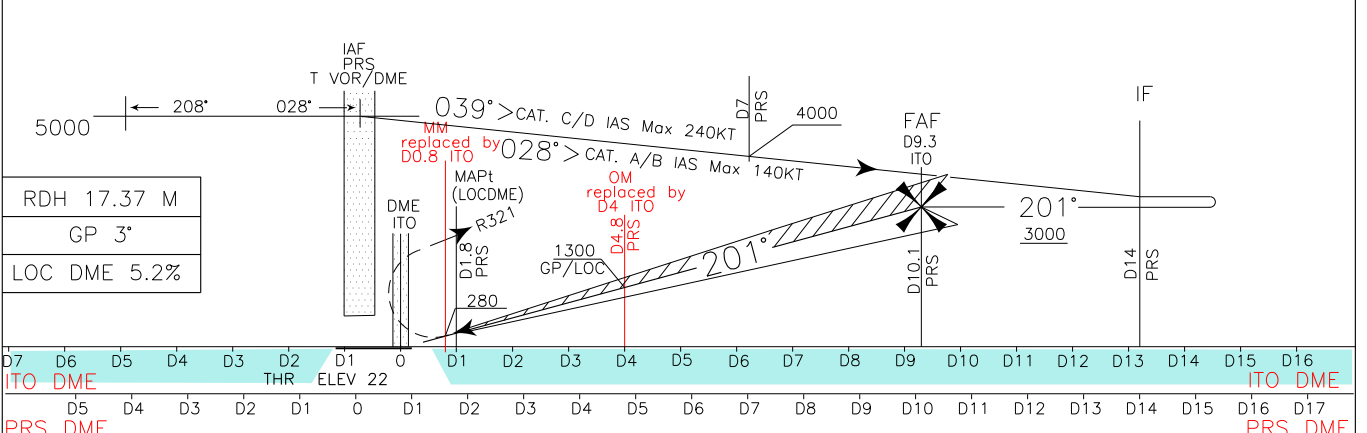
DOC.8168-ED.6-2014-AMDT 7

CHANGE: MAG VAR UPDATED AND RENUMBERED CHART

APP	Palermo APP/Radar	120.200 (118.650)	AD ELEV	65	PALERMO/PUNTA RAISI ILS-Y RWY 20
TWR	Raisi TWR	119.050			
ATIS	Palermo ATIS	123.875			



TRANSITION ALT 5000 MISSED APPROACH: as soon as possible turn right to join and follow RDL 321 PRS VOR climbing to 3000 ft and proceed to SALAP holding pattern.



STRAIGHT IN APPROACH	OCA (OCH)				(1) Circling Sector: North-West of the field only	FT PER MIN	GS	D4 ITO-MAPT	MAPt-THR	I T O	ALT(HGT)	MNM SECT PRS	ALT VOR
	A	B	C	D									
ILS	345(323)	355(333)	365(343)	375(353)		530	100	1 : 48	0 : 30	6	1940(1918)		
LOC	450 (428)					640	120	1 : 30	0 : 25	5	1620(1598)		
CIRCLING (1)	1000 (935)					740	140	1 : 17	0 : 22	4	1300(1278)		
						850	160	1 : 08	0 : 19	3	980(958)		
					950	180	1 : 00	0 : 17	2	660(638)			

ICAO - INSTRUMENT APPROACH CHART

AD 2 LICJ 5-19

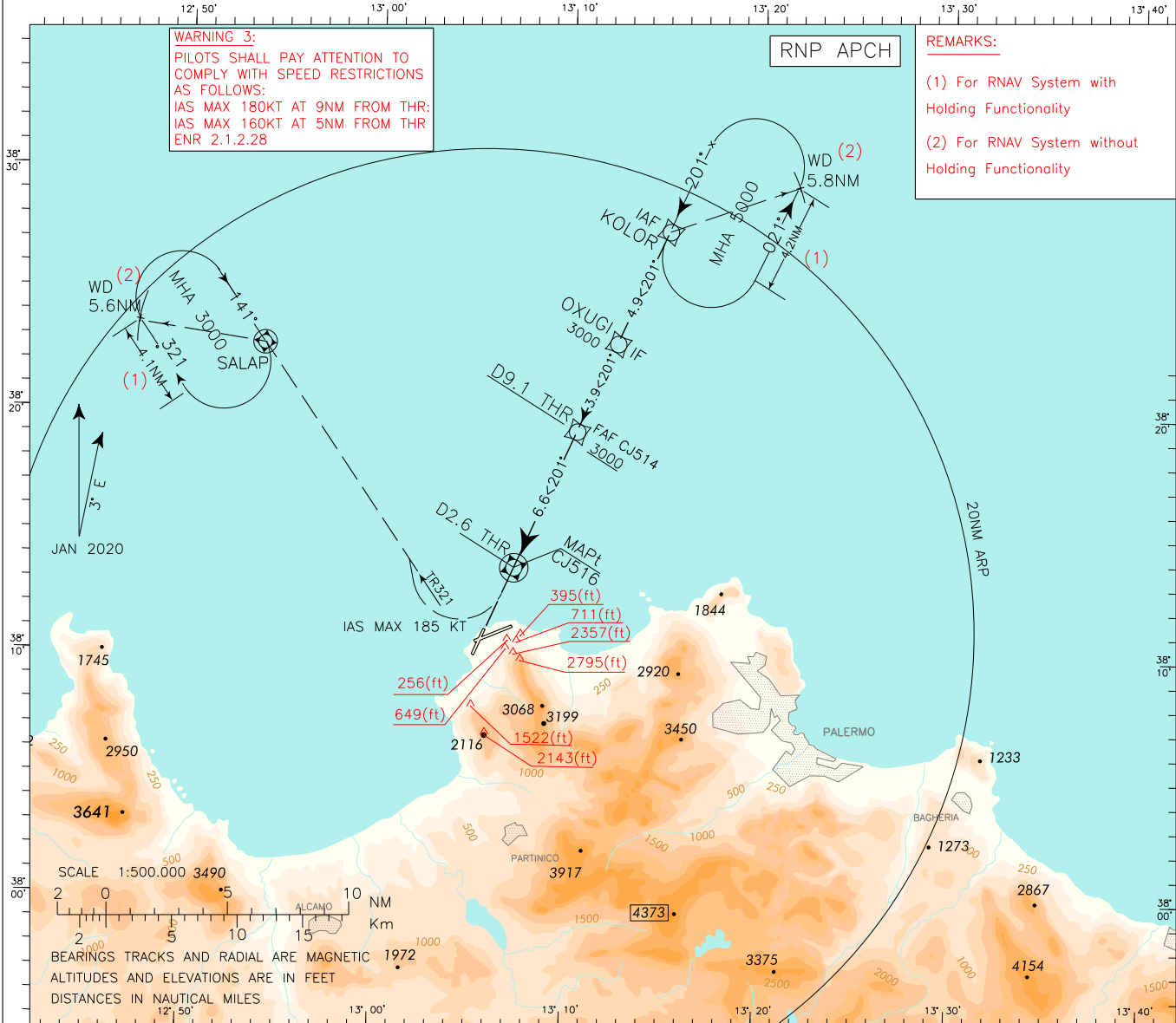
DOC.8168-ED.6-2014-AMDT 7

WARNING 1: Landing on RWY 02 is allowed HJ in VMC only. Landing on RWY 02 is forbidden HN.
WARNING 2: For typographical reasons the hazard beacons located South of AD are not represented.

APP	Palermo APP/Radar	120.200 (118.650)
TWR	Raisi TWR	119.050
ATIS	Palermo ATIS	123.875

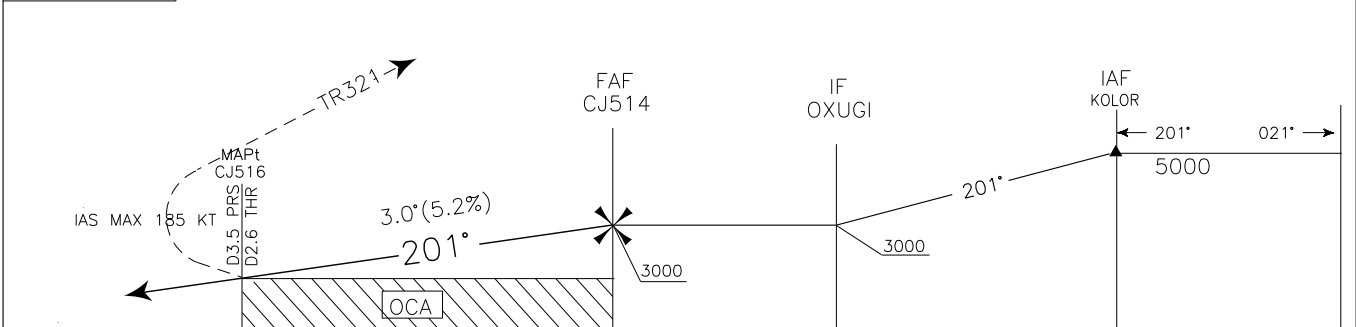
AD ELEV	LICJ
65	

PALERMO/ PUNTA RAISI
 RNP Z RWY 20



CHANGE: MAG VAR UPDATED, PRS VORDME INDICATIONS WITHDRAWN AND RENUMBERED CHART

TRANSITION ALT 5000
 TCH 17.37 M
 MISSED APPROACH: on MAPt (CJ516), climbing to 3000 FT, turn right (IAS MAX 185 kt) to SALAP on course 321 and hold.



0	D1	D2	D3	D4	D5	D6	D7	D8	D9	D10	D11	D12	D13	D14	D15	D16	D17	D18	D19	D20	D21	D22
NM to THR	THR	ELEV 22																				NM to THR

to MAPt		OCA (OCH)	A	B	C	D	(3) Circling Sector: North-West of the field only 	FT PER MIN	GS	DIST MAPt	DIST THR20	ALT(HGT)	MNM SECT ALT ARP
STRAIGHT IN APPROACH	LNAV	910 (888)				530		100	4.4	D7	2300(2278)		
		640	120	3.4	D6	1980(1968)							
		740	140	2.4	D5	1660(1638)							
		850	160	1.4	D4	1340(1318)							
CIRCLING (3)		1000 (935)				950	180	0.4	D3	1020(998)			

TABULAR DESCRIPTION

Palermo RNP Z RWY20 – Instrument Approach Procedure

Path Terminator	Waypoint Identifier	Inbound Course °M (°T)	Leg Distance (NM) (1)	Timing(min.)/ Waypoint Distance (NM) (2)	Turn Direction	Minimum Altitude (FT)	Maximum Altitude (FL)	Speed Limit (kt)	Magnetic Variation (°)	Navigation Specification
HM	KOLOR	201°(204°)	4.2	- / 5.8	L	+5000	-	-	3°	RNAV 1

Serial Number	Path Terminator	Waypoint Identifier	Fly Over	Course °M(°T)	Magnetic Variation	Distance (NM)	Turn Direction	Altitude (ft)	Speed Limit (kt)	VPA/ TCH	Navigation Specification
010	IF	KOLOR	-	-	-	-	-	+5000	-	-	RNAV 1
020	TF	OXUGI	-	201°(203.8°)	-	4.9	-	+3000	-	-	RNP APCH
030	TF	CJ514	-	201°(203.8°)	-	3.9	-	+3000	-	-	RNP APCH
040	TF	CJ516	Y	201°(203.8°)	-	6.6	-	@910	-	-	RNP APCH
-	-	THR20	-	-	-	-	-	+79	-	-3°/17.37M	-
060	CF	SALAP	-	321°(324.7°)	3°	-	R	+3000	185	-	RNP APCH
070	HM	SALAP	Y	141°(145°)	-	-	R	+3000	-	-	RNAV 1

Path Terminator	Waypoint Identifier	Inbound Course °M (°T)	Leg Distance (NM) (1)	Timing(min.)/ Waypoint Distance (NM) (2)	Turn Direction	Minimum Altitude (FT)	Maximum Altitude (FL)	Speed Limit (kt)	Magnetic Variation (°)	Navigation Specification
HM	SALAP	141°(145°)	4.1	- / 5.6	R	+3000	-	-	3°	RNAV 1

(1) RNAV system with holding functionality

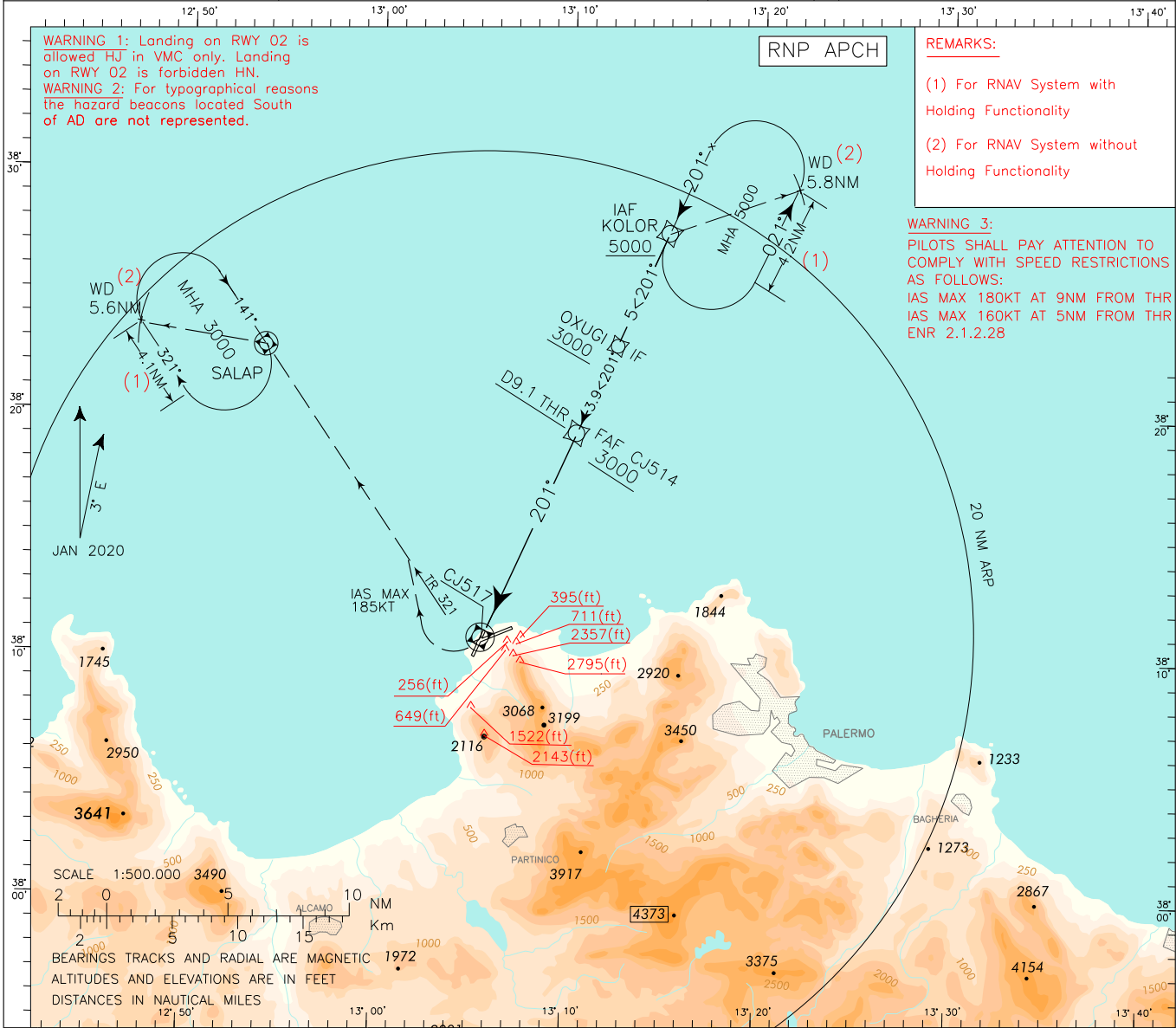
(2) RNAV system without holding functionality

WAYPOINT LIST
RNP Z RWY20

Waypoint Identifier	Coordinates
CJ514	38°19'24.01"N 013°10'26.32"E
CJ516	38°13'23.05"N 013°07'03.72"E

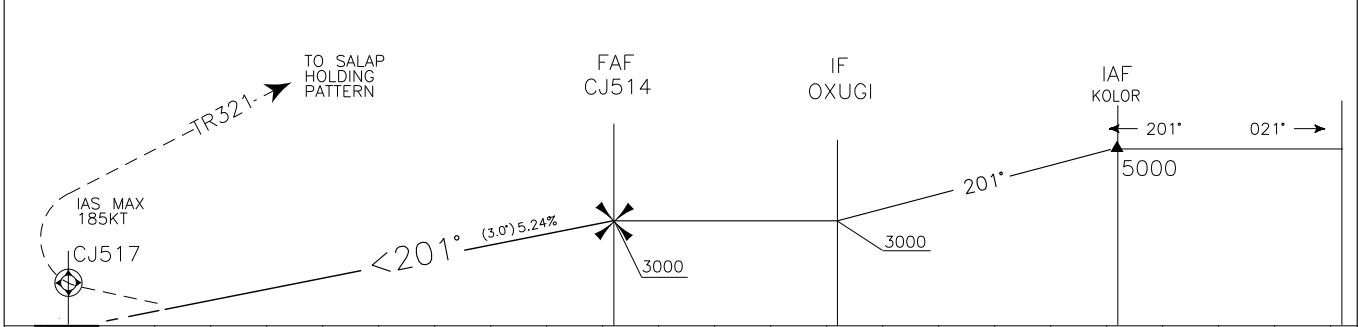
CHANGE: MAG VAR UPDATED, PRS VORDME INDICATIONS WITHDRAWN AND RENUMBERED CHART DOC.8168-ED.6-2014-AMDT 7

EGNOS CH 92351 E20A	APP Palermo APP/Radar TWR Raisi TWR ATIS Palermo ATIS	120.200 (118.650) 119.050 123.875	AD ELEV 65	L I C J	PALERMO/ PUNTA RAISI RNP Y RWY 20 (LPV only)
---------------------------	---	---	----------------------	------------------	---



TRANSITION ALT 5000
TCH 17.37 M

MISSED APPROACH: climb to 3000 FT on Rwy heading (TR201). AT CJ517 turn right (IAS MAX 185kt) to join and follow TR321 inbound to SALAP holding pattern



0	D1	D2	D3	D4	D5	D6	D7	D8	D9	D10	D11	D12	D13	D14	D15	D16	D17	D18	D19	D20	D21	D22
NM to THR	THR	ELEV 22																				NM to THR

OCA (OCH)		A	B	C	D	(3) Circling Sector: North-West of the field only 	FT PER MIN	GS	DIST THR20	ALT(HGT)	MNM SECT ALT ARP
STRAIGHT IN APPROACH	LPV	469(447)	481(459)	489(467)	500(478)		530	100	D7	2300(2278)	
							640	120	D6	1980(1968)	
							740	140	D5	1660(1638)	
							850	160	D4	1340(1318)	
CIRCLING (3)		1000 (935)				950	180	D3	1020(998)		

TABULAR DESCRIPTION

Palermo RNP Y RWY20 (LPV only) – Instrument Approach Procedure

Path Terminator	Waypoint Identifier	Inbound Course °M (°T)	Leg Distance (NM) (1)	Timing(min.)/ Waypoint Distance (NM) (2)	Turn Direction	Minimum Altitude (FT)	Maximum Altitude (FL)	Speed Limit (kt)	Magnetic Variation (°)	Navigation Specification
HM	KOLOR	201°(204°)	4.2	5.8	L	5000	-	-	3°	RNAV 1

Serial Number	Path Terminator	Waypoint Identifier	Fly Over	Course °M(°T)	Magnetic Variation	Distance (NM)	Turn Direction	Altitude (ft)	Speed Limit (kt)	VPA/ TCH	Navigation Specification
010	IF	KOLOR	-	-	-	-	-	+5000	-	-	RNAV 1
020	TF	OXUGI	-	201°(203.8°)	-	4.96	-	+3000	-	-	RNP APCH
030	TF	CJ514	-	201°(203.8°)	-	3.9	-	+3000	-	-	RNP APCH
	-	THR20	-	-	-	-	-	+79	-	-3°/17.37M	-
040	CF	CJ517	Y	201°(203.8°)	-	-	-	-	-	-	RNP APCH
050	CF	SALAP	-	321°(324.6°)	3°	-	R	+3000	-185	-	RNP APCH
060	HM	SALAP	Y	141°(145°)	-	-	R	+3000	-	-	RNAV 1

Path Terminator	Waypoint Identifier	Inbound Course °M (°T)	Leg Distance (NM) (1)	Timing(min.)/ Waypoint Distance (NM) (2)	Turn Direction	Minimum Altitude (FT)	Maximum Altitude (FL)	Speed Limit (kt)	Magnetic Variation (°)	Navigation Specification
HM	SALAP	141°(145°)	4.1	- / 5.6	R	3000	-	-	3°	RNAV 1

(1) RNAV system with holding functionality

(2) RNAV system without holding functionality

WAYPOINT LIST
RNP Y RWY20 (LPV only)

Waypoint Identifier	Coordinates
CJ514	38°19'24.01"N 013°10'26.32"E
CJ517	38°10'24.02"N 013°05'22.78"E

SBAS FAS DATA BLOCK LICJ RNP Y RWY20 (LPV only)

INPUT DATA	
PARAMETERS	VALUES
Operation Type	0
SBAS Provider	1
Airport Identifier	LICJ
Runway	20
Runway Direction	0
Approach Performance Designator	0
Route Indicator	Y
Reference Path Data Selector	0
Reference Path Identifier	E20A
LTP/FTP Latitude	381059.9085N
LTP/FTP Longitude	0130542.9260E
LTP/FTP Ellipsoidal Height (metres)	50.2
FPAP Latitude	380958.5745N
Delta FPAP Latitude (seconds)	-61.3340
FPAP Longitude	0130508.4985E
Delta FPAP Longitude (seconds)	34.4275
Threshold Crossing Height (metres)	17.35
TCH Units Selector	1
Glidepath Angle (degrees)	3
Course Width (metres)	105
Length Offset (metres)	0
HAL (metres)	40
VAL (metres)	50

OUTPUT DATA	
Data Block	10 0A 03 09 0C 14 C8 00 01 30 32 05 89 F1 62 10 1C B0 9E 05 F6 15 D4 20 FE 09 F3 FE 5B 81 2C 01 64 00 C9 FA F3 1F 96 3E
Calculated CRC Value	F31F963E

Required Additional Data (not CRC wrapped)

Parameters	Values
ICAO Code	LI
LTP/FTP Orthometric Height (metres)	6.6
FPAP Orthometric Height (metres)	12.9

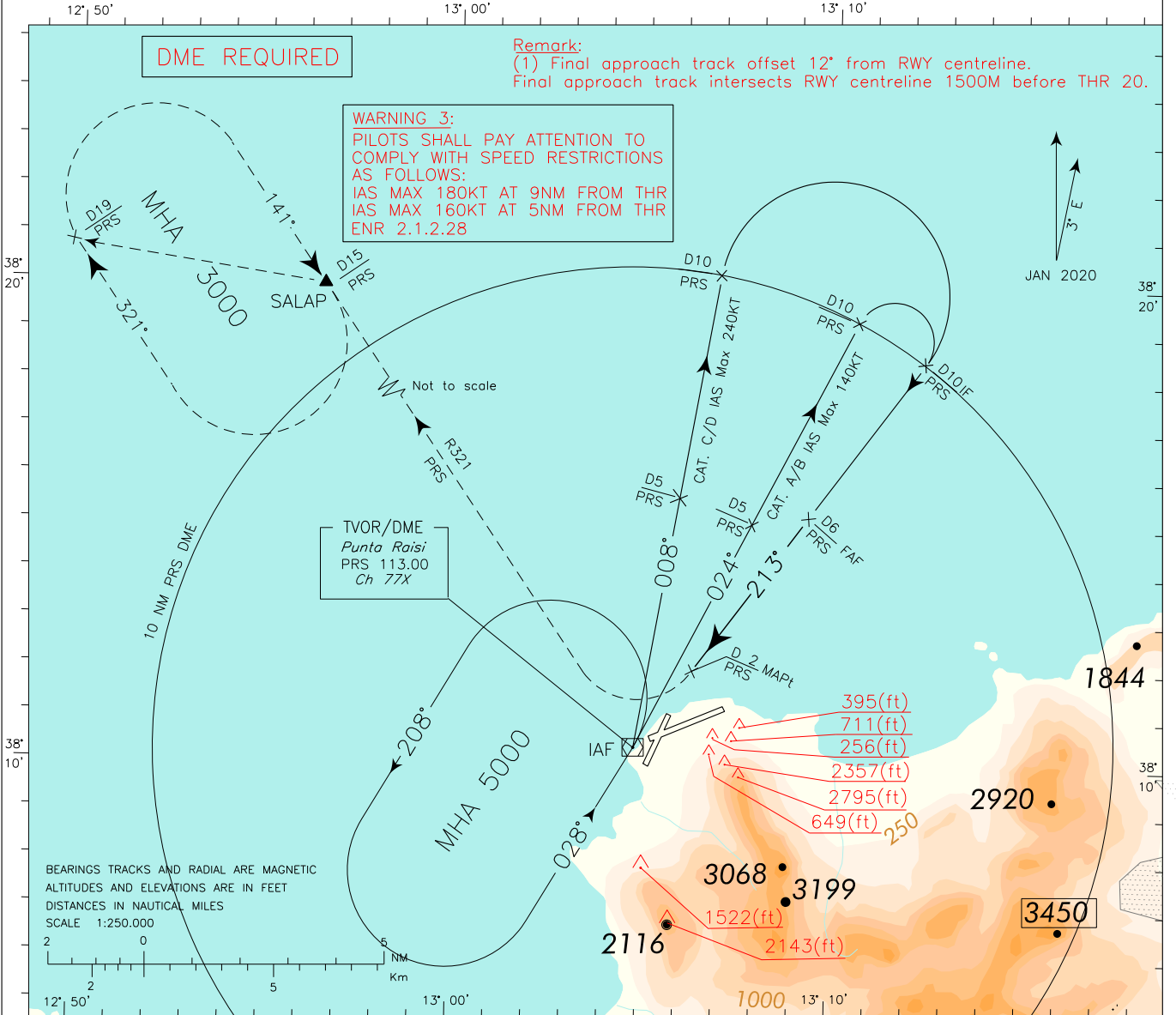
Intenzionalmente bianca

Intentionally left blank

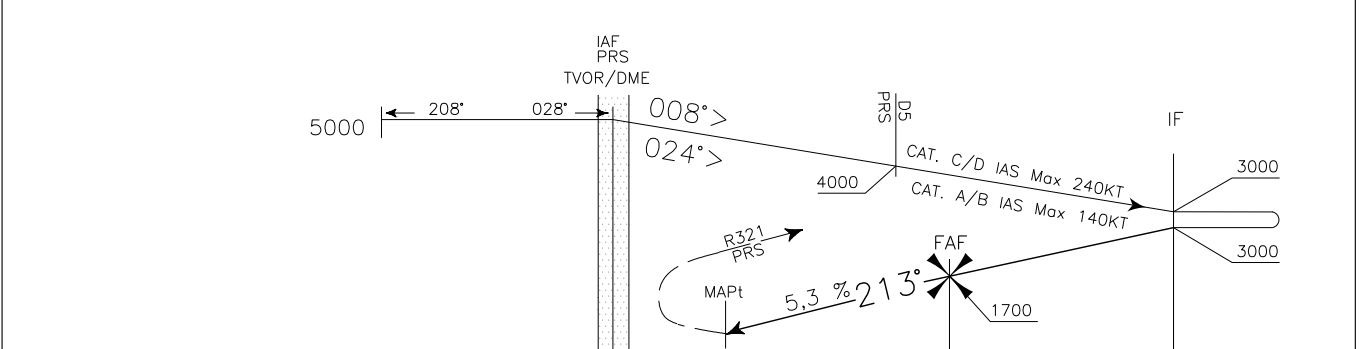
ICAO - INSTRUMENT APPROACH CHART

AD 2 LICJ 5-25

APP	Palermo APP/Radar	120.200 (118.650)	AD ELEV	65	LICJ	PALERMO/PUNTA RAISI
TWR	Raisi TWR	119.050				
ATIS	Palermo ATIS	123.875			VOR	RWY 20



TRANSITION ALT 5000 MISSED APPROACH: at 2 NM before PRS VOR DME turn right to join and follow RDL 321 VOR PRS climbing to 3000 Ft and proceed to SALAP Holding pattern.



D10	D9	D8	D7	D6	D5	D4	D3	D2	D1	THR	0	D1	D2	D3	D4	D5	D6	D7	D8	D9	D10	D11	D12	D13
PRS DME											PRS DME													
11											12													
NM											NM													

OCA (OCH)	A	B	C	D	(2) Circling Sector: North-West of the field only 	FT PER MIN	GS	FAF-MAPT	MAPT-THR	ALT(HGT)	MNM SECT	ALT VOR
STRAIGHT IN APPROACH	VORDME	500 (478)				506	100	2 : 24	0 : 36	6	1700(1678)	
						608	120	2 : 00	0 : 30	5	1380(1358)	
						709	140	1 : 43	0 : 26	4	1060(1038)	
						810	160	1 : 30	0 : 23	3	740(718)	
CIRCLING (2)	1000 (935)			911	180	1 : 20	0 : 20	3	740(718)			

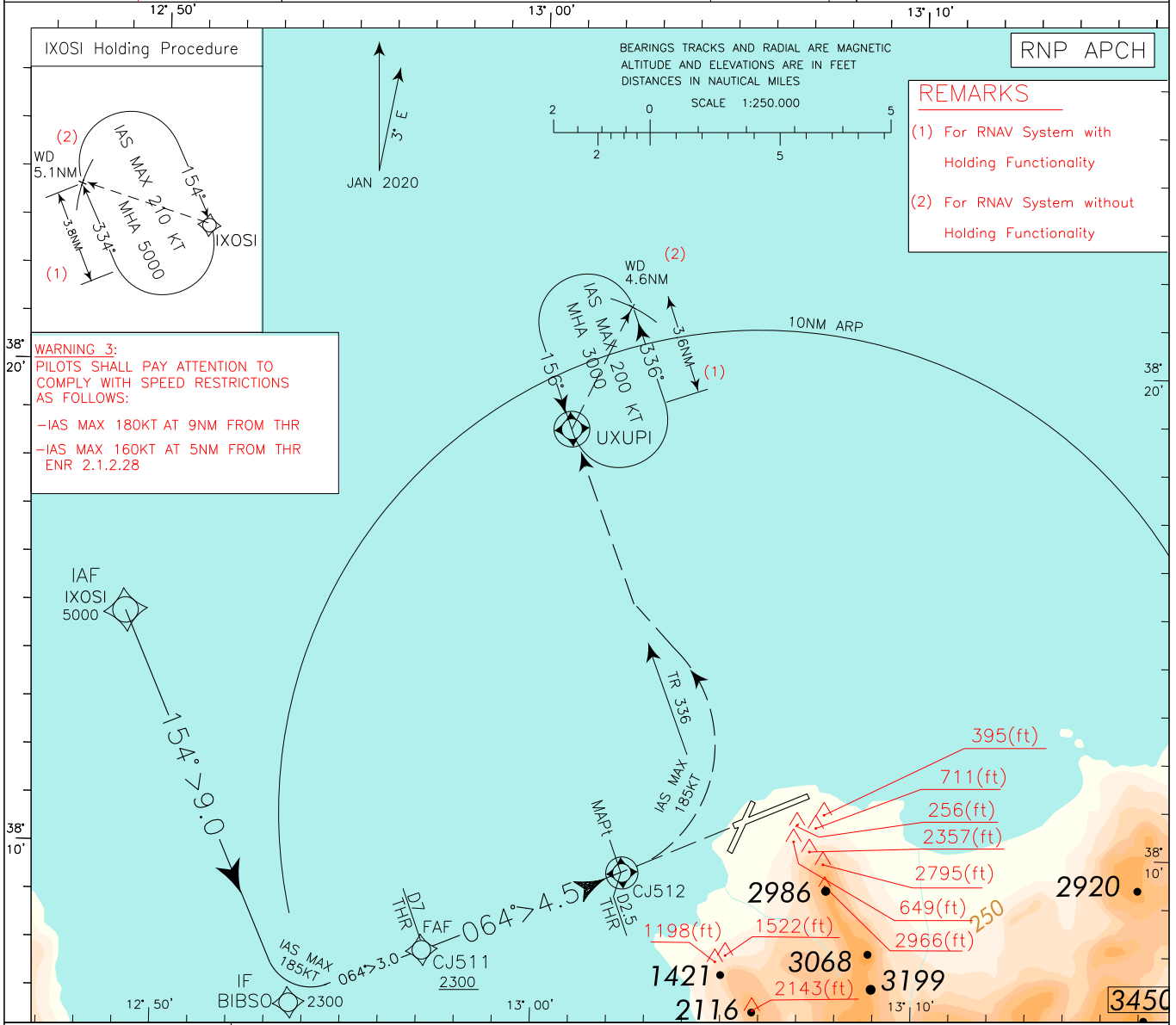
ICAO - INSTRUMENT APPROACH CHART

AD 2 LICJ 5-27

DOC.8168-ED.6-2014-AMDT 7

CHANGE: MAG VAR UPDATED, PRS VORDME INDICATIONS WITHDRAWN AND RENUMBERED CHART

<p>WARNING 1: Landing on RWY 02 is allowed HJ in VMC only. Landing on RWY 02 is forbidden HN.</p> <p>WARNING 2: For topographical reasons the hazard beacons located South of AD are not represented.</p>	<p>APP Palermo APP/Radar 120.200 (118.650)</p> <p>TWR Raisi TWR 119.050</p> <p>ATIS Palermo ATIS 123.875</p>	<p>AD ELEV 65</p>	<p>LICJ PALERMO/PUNTA RAISI</p> <p>RNP Z RWY 07</p>
---	--	-------------------	---

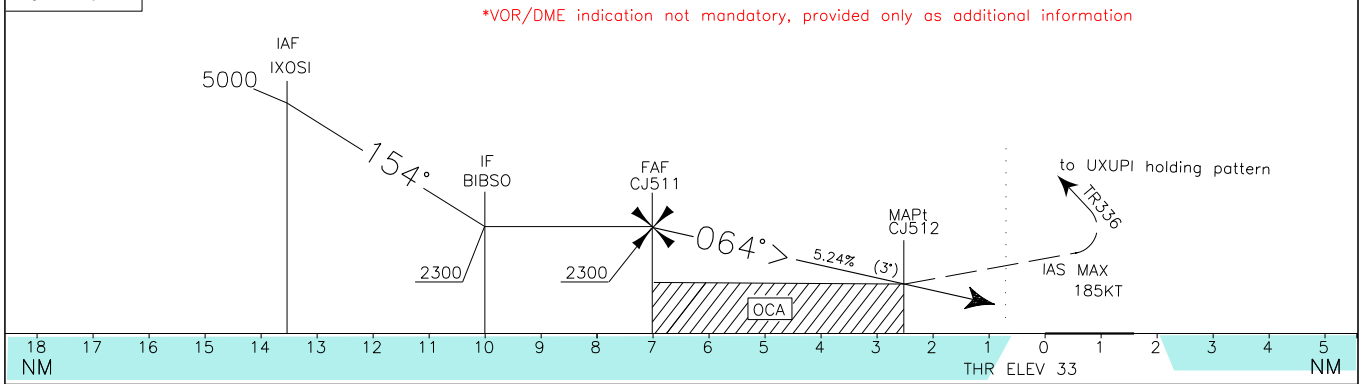


TRANSITION ALT 5000

MISSED APPROACH: on MAPt (CJ512), climbing to 3000FT, turn left (IAS MAX 185KT) to join and follow TR 336 inbound to UXUPI Holding Pattern.

TCH 15 M

**VOR/DME indication not mandatory, provided only as additional information*



MAPt				THR ELEV 33				MAPt				
OCA (OCH)		A	B	C	D	<p>(3) Circling Sector: North-West of the field only.</p>	FT PER MIN	GS	DIST MAPt	DIST THR07	ALT(HGT)	<p>MNM SECT ALT ARP</p>
STRAIGHT IN APPROACH	LNAV	880 (847)					536	100	3.5	6	1980(1947)	
							643	120	2.5	5	1660(1627)	
							750	140	1.5	4	1340(1307)	
							857	160	0.5	3	1020(987)	
CIRCLING (3)		1000 (935)				964	180					

TABULAR DESCRIPTION

Palermo RNP Z RWY07 – Instrument Approach Procedure

Path Terminator	Waypoint Identifier	Inbound Course °M (°T)	Leg Distance (NM) (1)	Timing(min.)/ Waypoint Distance (NM) (2)	Turn Direction	Minimum Altitude (FT)	Maximum Altitude (FL)	Speed Limit (kt)	Magnetic Variation (°)	Navigation Specification
HM	IXOSI	154°(156.9°)	3.8	- / 5.1	R	+5000	-	-210	3°	RNAV 1

Serial Number	Path Terminator	Waypoint Identifier	Fly Over	Course °M(°T)	Magnetic Variation	Distance (NM)	Turn Direction	Altitude (ft)	Speed Limit (kt)	VPA/ TCH	Navigation Specification
010	IF	IXOSI	-	-	-	-	-	+5000	-	-	RNAV 1
020	TF	BIBSO	-	154°(156.9°)	-	9.0	-	+2300	-185	-	RNP APCH
030	TF	CJ511	-	064°(066.8 °)	-	3.0	-	+2300	-	-	RNP APCH
040	TF	CJ512	Y	064°(066.9°)	-	4.5	-	@880	-	-	RNP APCH
	-	THR07	-	-	-	-	-	+83	-	-3°/15M	-
050	CF	UXUPI	-	336°(339.6°)	3°	-	L	+3000	-185	-	RNP APCH
060	HM	UXUPI	Y	156°(159.6°)	-	-	L	+3000	-200	-	RNAV 1

Path Terminator	Waypoint Identifier	Inbound Course °M (°T)	Leg Distance (NM) (1)	Timing(min.)/ Waypoint Distance (NM) (2)	Turn Direction	Minimum Altitude (FT)	Maximum Altitude (FL)	Speed Limit (kt)	Magnetic Variation (°)	Navigation Specification
HM	UXUPI	156°(159.6°)	3.6	- / 4.6	L	+3000	-	-200	3°	RNAV 1

(1) RNAV system with holding functionality

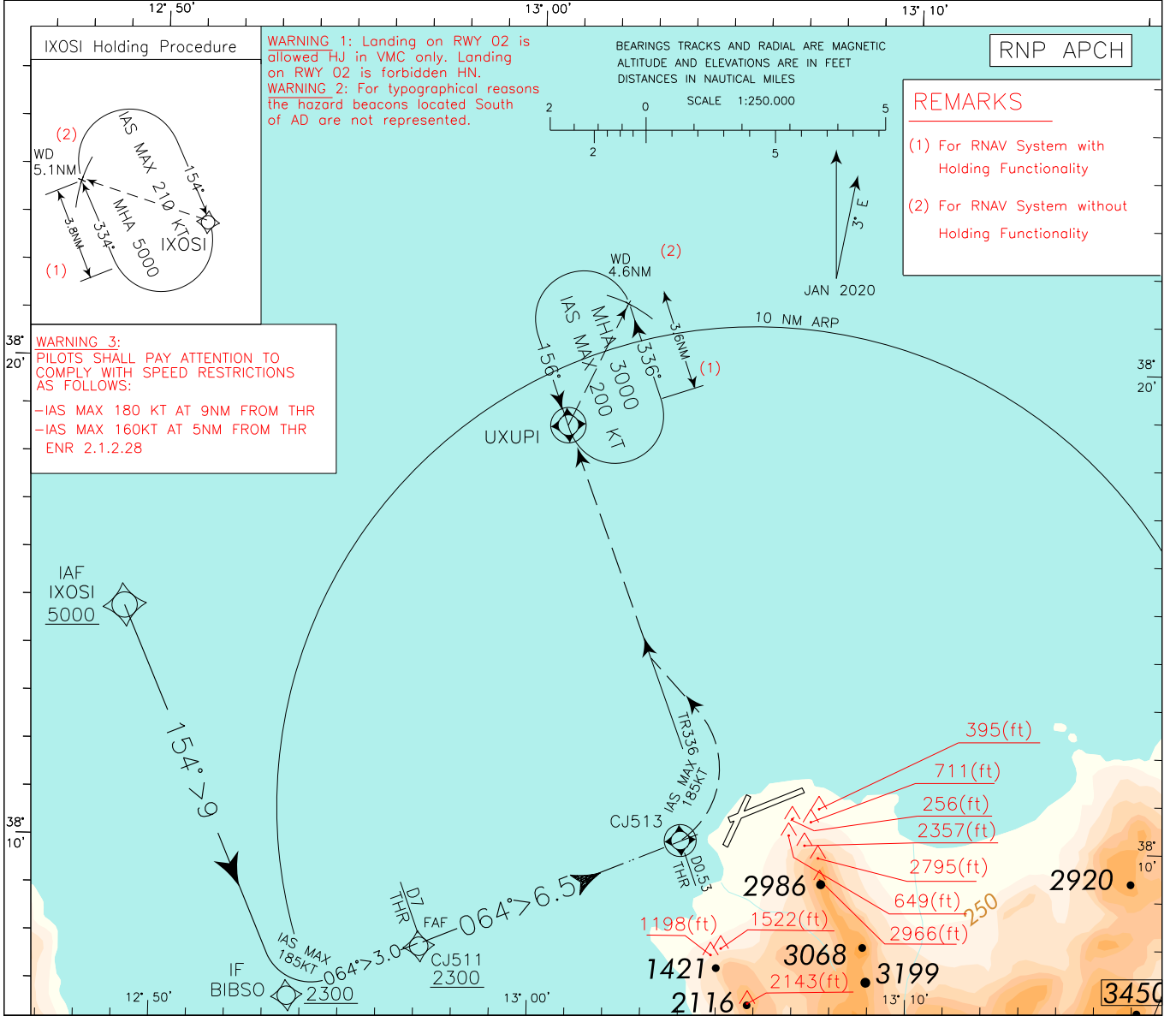
(2) RNAV system without holding functionality

WAYPOINT LIST
RNP Z RWY07

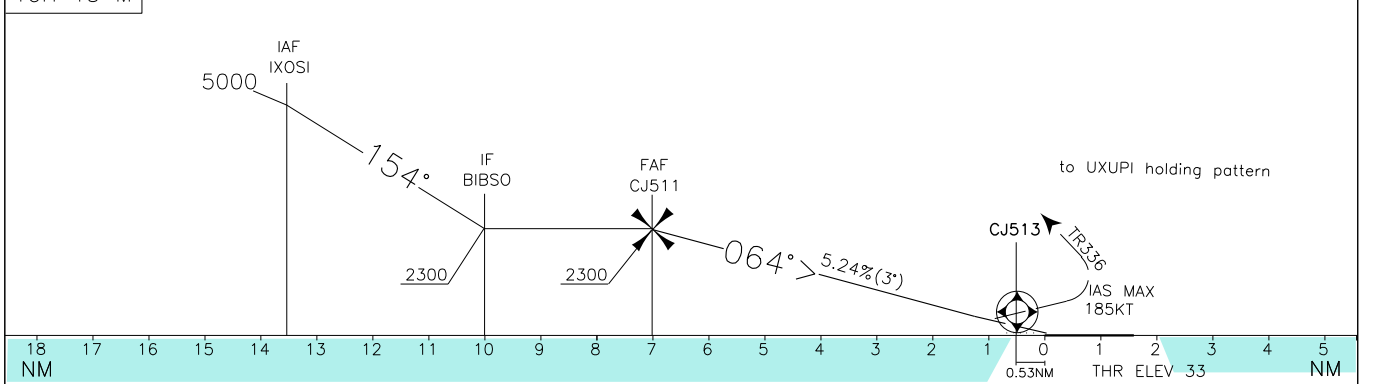
Waypoint Identifier	Coordinates
CJ511	38°07'44.74"N 012°57'08.84"E
CJ512	38°09'30.18"N 013°02'21.19"E

EGNOS CH 42250 E07A	APP	Palermo APP/Radar	120.200 (118.650)	AD ELEV	L I C J	PALERMO/PUNTA RAISI RNP Y RWY 07 (LPV only)
	TWR	Raisi TWR	119.050	65		
	ATIS	Palermo ATIS	123.875			

CHANGE: MAG VAR UPDATED, PRS VORDME INDICATIONS WITHDRAWN AND RENUMBERED CHART DOC.8168-ED.6-2014-AMDT 7



TRANSITION ALT 5000 MISSED APPROACH: proceed on TR 064 climbing to 3000 FT, at CJ513, turn left (IAS MAX 185KT) to join and follow TR 336 inbound to UXUPI Holding Pattern.
TCH 15 M



STRAIGHT IN APPROACH	LPV	OCA (OCH)				(3) Circling Sector: North-West of the field only.	FT PER MIN	GS	DIST THR07	ALT(HGT)	MNM SECT ALT ARP
		A	B	C	D						
		819 (786)	831 (798)	839 (806)	850 (817)		536	100	6	1980(1947)	
							643	120	5	1660(1627)	
							750	140	4	1340(1307)	
							857	160	3	1020(987)	
CIRCLING (3)		1000 (935)					964	180			

TABULAR DESCRIPTION

Palermo RNP Y RWY07 (LPV only) – Instrument Approach Procedure

Path Terminator	Waypoint Identifier	Inbound Course °M (°T)	Leg Distance (NM) (1)	Timing(min.)/ Waypoint Distance (NM) (2)	Turn Direction	Minimum Altitude (FT)	Maximum Altitude (FL)	Speed Limit (kt)	Magnetic Variation (°)	Navigation Specification
HM	IXOSI	154°(156.9°)	3.8	5.1	R	5000	-	-210	3°	RNAV 1

Serial Number	Path Terminator	Waypoint Identifier	Fly Over	Course °M(°T)	Magnetic Variation	Distance (NM)	Turn Direction	Altitude (ft)	Speed Limit (kt)	VPA/ TCH	Navigation Specification
010	IF	IXOSI	-	-	-	-	-	+5000	-	-	RNAV 1
020	TF	BIBSO	-	154°(156.9°)	-	9	-	+2300	-185	-	RNP APCH
030	TF	CJ511	-	064°(066.8°)	-	3	-	+2300	-	-	RNP APCH
040	TF	CJ513	Y	064°(066.9°)	-	6.5	-	-	-	-	RNP APCH
	-	THR07	-	-	-	-	-	+83	-	-3°/15M	-
050	CF	UXUPI	-	336(339.6°)	3°	-	L	+3000	-185	-	RNP APCH
060	HM	UXUPI	Y	156(159.6°)	-	-	L	+3000	-200	-	RNAV 1

Path Terminator	Waypoint Identifier	Inbound Course °M (°T)	Leg Distance (NM) (1)	Timing(min.)/ Waypoint Distance (NM) (2)	Turn Direction	Minimum Altitude (FT)	Maximum Altitude (FL)	Speed Limit (kt)	Magnetic Variation (°)	Navigation Specification
HM	UXUPI	156(159.6°)	3.6	- / 4.6	L	3000	-	-200	3°	RNAV 1

(1) RNAV system with holding functionality

(2) RNAV system without holding functionality

WAYPOINT LIST
RNP Y RWY07 (LPV only)

Waypoint Identifier	Coordinates
CJ511	38°07'44.74" N 012°57'08.84" E
CJ513	38°10'16.51" N 013°04'38.73" E

SBAS FAS DATA BLOCK LICJ RNP Y RWY07 (LPV only)

INPUT DATA	
PARAMETERS	VALUES
Operation Type	0
SBAS Provider	1
Airport Identifier	LICJ
Runway	07
Runway Direction	0
Approach Performance Designator	0
Route Indicator	Y
Reference Path Data Selector	0
Reference Path Identifier	E07A
LTP/FTP Latitude	381029.0960N
LTP/FTP Longitude	0130516.1350E
LTP/FTP Ellipsoidal Height (metres)	53.5
FPAP Latitude	381109.8200
Delta FPAP Latitude (seconds)	40.7240
FPAP Longitude	0130717.2400
Delta FPAP Longitude (seconds)	121.1050
Threshold Crossing Height (metres)	15.00
TCH Units Selector	1
Glidepath Angle (degrees)	3
Course Width (metres)	105
Length Offset (metres)	0
HAL (metres)	40
VAL (metres)	50

OUTPUT DATA	
Data Block	10 0A 03 09 0C 07 C8 00 01 37 30 05 D0 00 62 10 CE DE 9D 05 17 16 28 3E 01 22 B2 03 2C 81 2C 01 64 00 C8 FA A4 C0 A3 2C
Calculated CRC Value	A4C0A32C

Required Additional Data (not CRC wrapped)

Parameters	Values
ICAO Code	LI
LTP/FTP Orthometric Height (metres)	10.0
FPAP Orthometric Height (metres)	12.8

Intenzionalmente bianca

Intentionally left blank

ICAO – INSTRUMENT APPROACH CHART

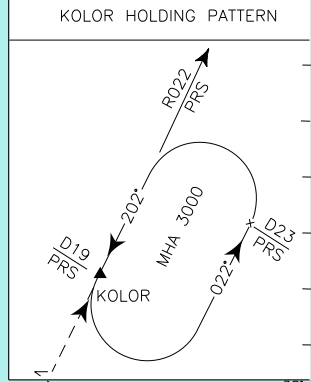
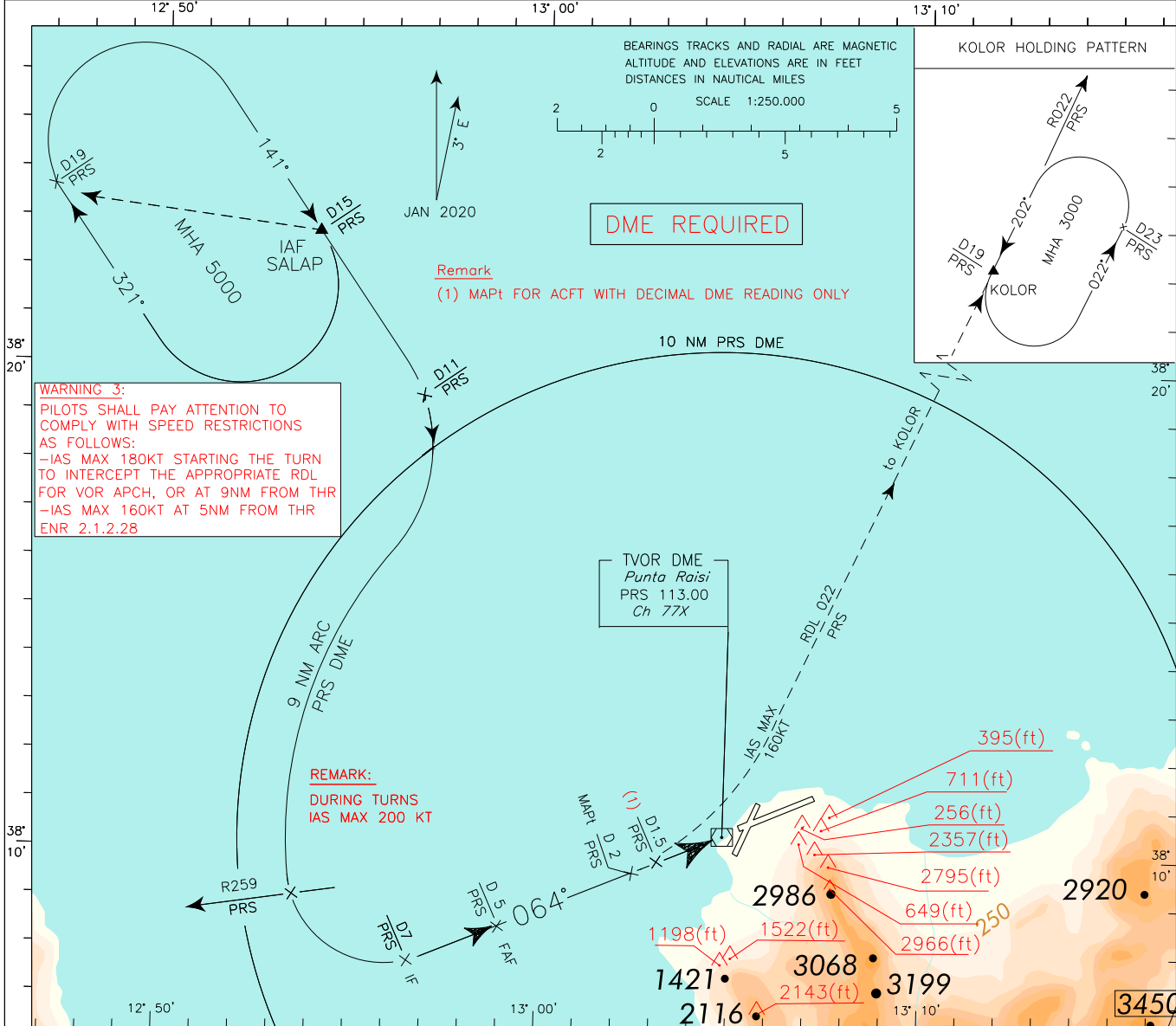
AD 2 LICJ 5-33

WARNING 1: Landing on RWY 02 is allowed HJ in VMC only. Landing on RWY 02 is forbidden HN.
WARNING 2: For topographical reasons the hazard beacons located South of AD are not represented.

APP	Palermo APP/Radar	120.200 (118.650)	AD ELEV	LICJ	PALERMO/PUNTA RAISI
TWR	Raisi TWR	119.050	65		
ATIS	Palermo ATIS	123.875			
				VOR-Z	RWY 07

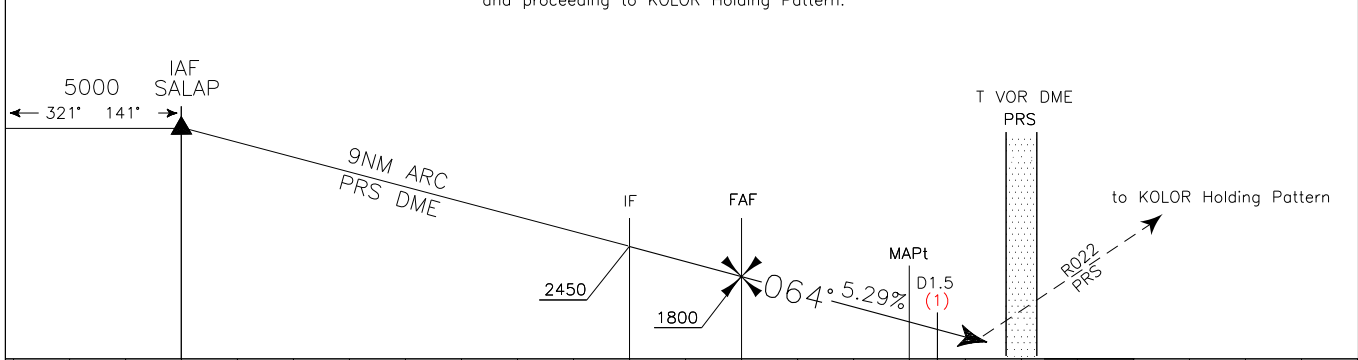
DOC.8168-ED.6-2014-AMDT 7

CHANGE: MAG VAR UPDATED AND RENUMBERED CHART



TRANSITION ALT 5000

MISSED APPROACH: at MAPt turn left (IAS MAX 160KT) to join and follow RDL 022 VOR PRS climbing to 3000FT and proceeding to KOLOR Holding Pattern.



D18	D17	D16	D15	D14	D13	D12	D11	D10	D9	D8	D7	D6	D5	D4	D3	D2	D1.501	0	D1	D2	D3	D4	D5	D6					
PRS DME																		THR ELEV 33						PRS DME					
NM																		NM						NM					

OCA (OCH)		A	B	C	D	(2) Circling Sector: North-West of the field only. 	FT PER MIN	GS	FAF-MAPt	MAPt-THR	ALT(HGT)	MNM SECT ALT PRS	VOR
STRAIGHT IN APPROACH	VORDME	840 (807)					536	100	2 : 06	1 : 08	5	1800(1767)	
	VORDME (Decimal DME Reading)	710 (677) (1)					643	120	1 : 45	0 : 57	4	1480(1447)	
	CIRCLING (2)		1000 (935)				750	140	1 : 30	0 : 49	3	1160(1127)	
						857	160	1 : 19	0 : 43	2	840(807)		
						964	180	1 : 10	0 : 38				

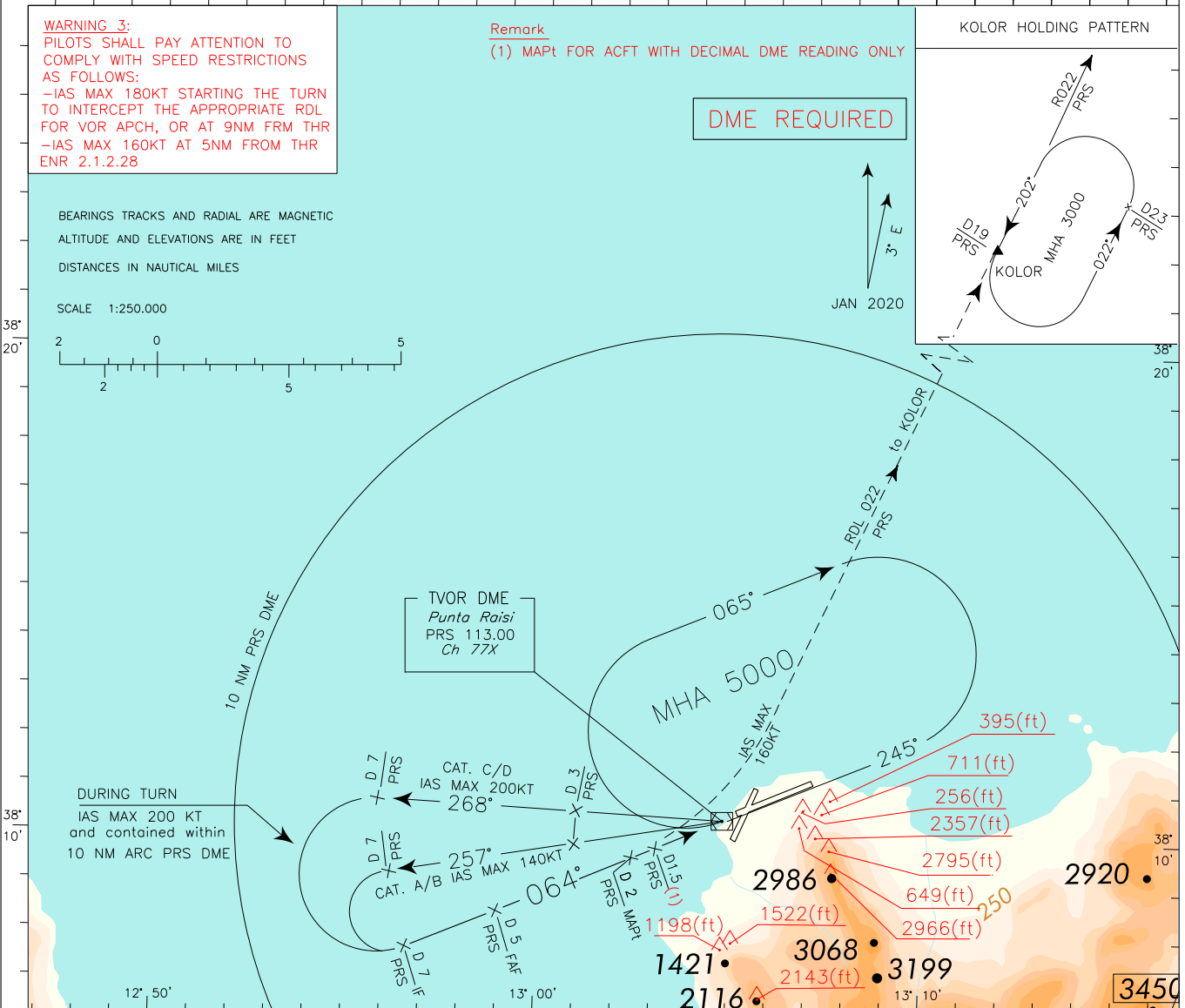
ICAO – INSTRUMENT APPROACH CHART

AD 2 LICJ 5-35

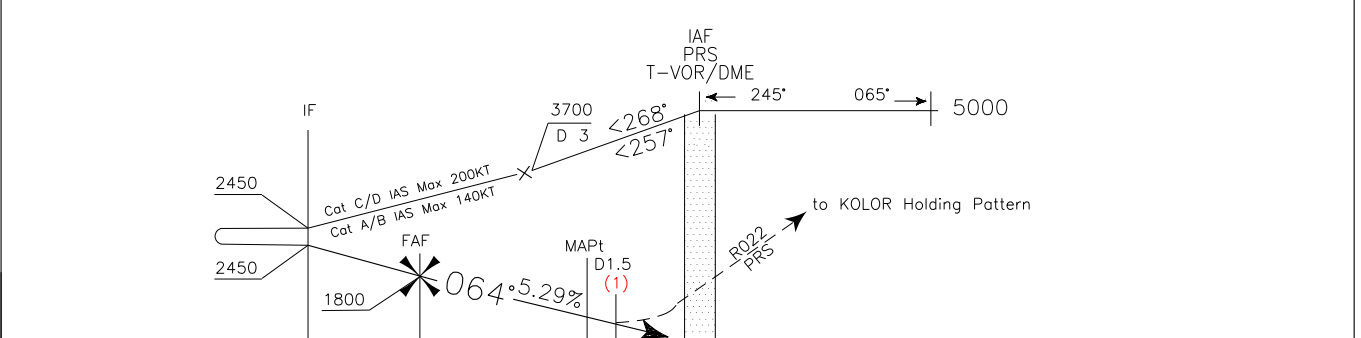
<p>WARNING 1: Landing on RWY 02 is allowed HJ in VMC only. Landing on RWY 02 is forbidden HN.</p> <p>WARNING 2: For typographical reasons the hazard beacons located South of AD are not represented.</p>	APP	Palermo APP/Radar	120.200 (118.650)	AD ELEV	<p>L I C J</p>	<p>PALERMO/PUNTA RAISI</p>
	TWR	Raisi TWR	119.050	65		
	ATIS	Palermo ATIS	123.875	VOR-Y		

DOC.8168-ED.6-2014-AMDT 7

CHANGE: MAG VAR UPDATED AND RENUMBERED CHART



TRANSITION ALT 5000
 MISSED APPROACH: at MAPt turn left (IAS MAX 160KT) to join and follow RDL 022 PRS VOR climbing to 3000FT and proceeding to KOLOR Holding Pattern.



D12	D11	D10	D9	D8	D7	D6	D5	D4	D3	D1.5	D1	D0	D1	D2	D3	D4	D5	D6	D7	D8	D9	D10	D11
PRS DME												PRS DME											
NM												NM											

STRAIGHT IN APPROACH	OCA (OCH)	A	B	C	D	(2) Circling Sector: North-West of the field only.	FT PER MIN	GS	FAF-MAPt	MAPt-THR	ALT(HGT)	MNM SECT ALT PRS VOR
	VORDME	840 (807)					536	100	2 : 06	1 : 08	5 1800(1767)	
	VORDME (Decimal DME Reading)	710 (677) (1)					643	120	1 : 45	0 : 57	4 1480(1447)	
	CIRCLING (2)	1000 (935)					750	140	1 : 30	0 : 49	3 1160(1127)	
							857	160	1 : 19	0 : 43	2 840(807)	
							964	180	1 : 10	0 : 38		

