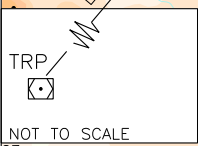
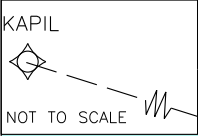
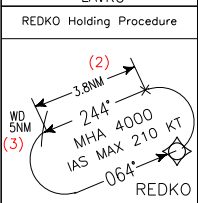
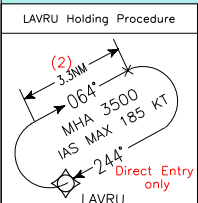
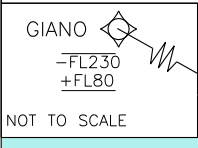


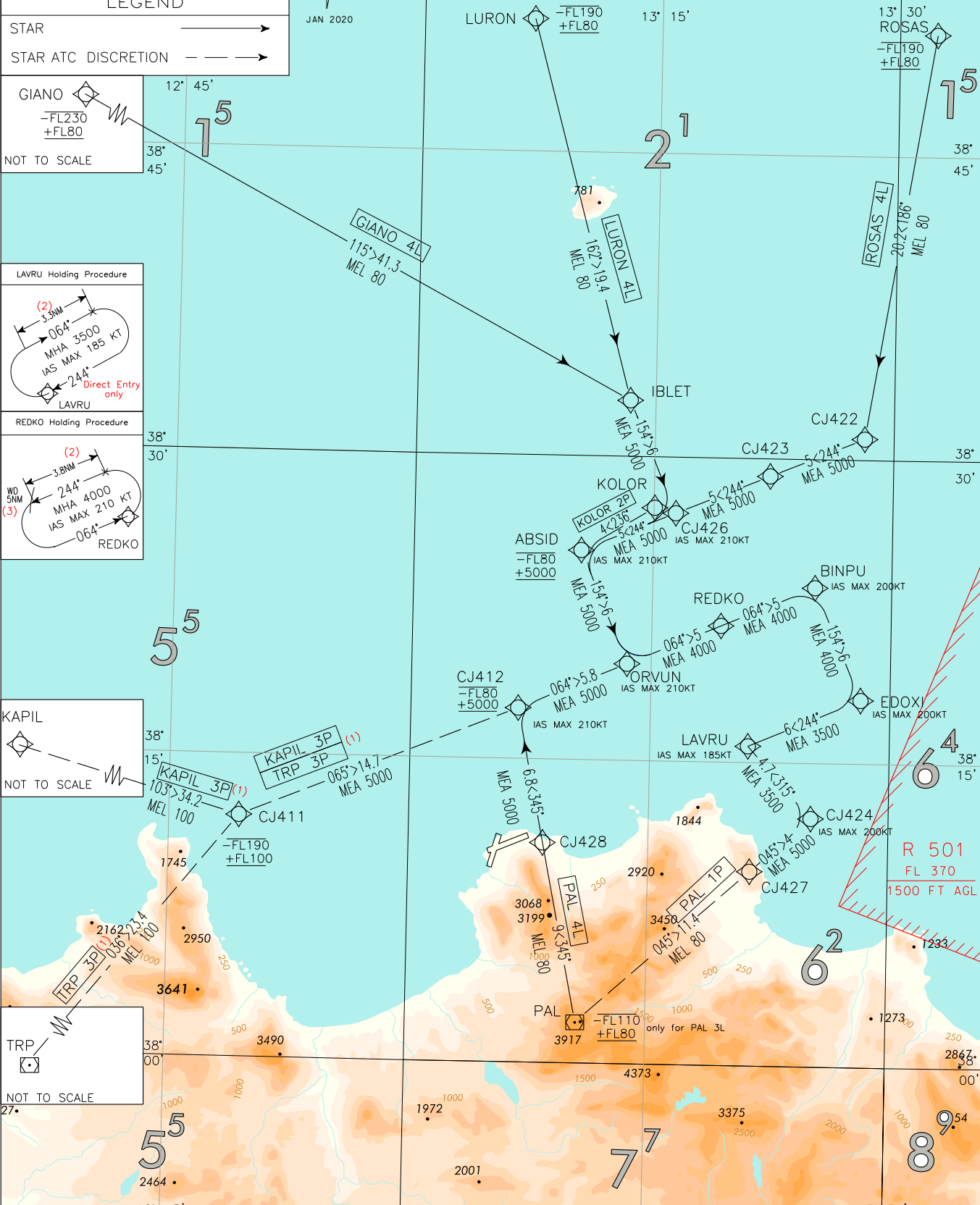
FREQUENCIES		
APP	Palermo APP/Radar	120.200 (118.650)
TWR	Raisi TWR	119.050
ATIS	Palermo ATIS	123.875

LEGEND	
STAR	—————>
STAR ATC DISCRETION	- - - - ->

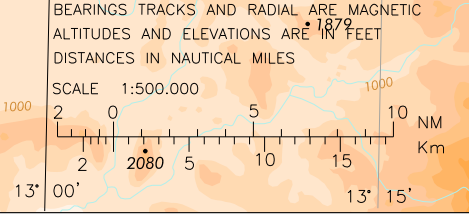


STAR RNAV1 RWY 25

PALERMO/ PUNTA RAISI
TRANSITION ALT 5000



- REMARKS:**
- (1) Levels up to FL 160 are usable subject to TRAPANI APP clearance. Due to traffic to/from TRAPANI Birgi Aerodrome, the lowest usable level is FL 100. FL 80 and FL 90 may be flown under specific ATC clearance only.
 - (2) For RNAV System with Holding Functionality
 - (3) For RNAV System without Holding Functionality



MNM SECT ALT
ARP

7700

CHANGE: MAG VAR UPDATED

PALERMO PUNTA RAISI

STAR RNAV 1 RWY 25

GIANO 4L

Path Terminator	Waypoint Identifier	Fly Over	Course °M(°T)	Magnetic Variation	Distance (NM)	Turn Direction	Altitude (ft)	Speed Limit (kt)	Navigation Specification
IF	GIANO	-	-	-	-	-	-FL230 +FL80	-	RNAV1
TF	IBLET	-	115°(117.7°)	-	41.3	-	+FL80	-	RNAV1
TF	CJ426	-	154°(157.1°)	-	6.0	-	+5000	-210	RNAV1
TF	ABSID	-	244°(247.6°)	-	5.0	R	-FL80 +5000	-210	RNAV1
TF	ORVUN	-	154°(157.1°)	-	6.0	L	+5000	-210	RNAV1
TF	REDKO	-	064°(66.9°)	-	5.0	L	+4000	-	RNAV1
TF	BINPU	-	064°(66.9°)	-	5.0	-	+4000	-200	RNAV1
TF	EDOXI	-	154°(157.1°)	-	6.0	R	+4000	-200	RNAV1
TF	LAVRU	-	244°(247.°)	-	6.0	R	+3500	-185	RNAV1

KAPIL 3P (ATC Discretion) (1)

Path Terminator	Waypoint Identifier	Fly Over	Course °M(°T)	Magnetic Variation	Distance (NM)	Turn Direction	Altitude (ft)	Speed Limit (kt)	Navigation Specification
IF	KAPIL	-	-	-	-	-	-	-	RNAV1
TF	CJ411	-	103°(105.7°)	-	34.2	-	-FL190 +FL100	-	RNAV1
TF	CJ412	-	065°(67.8°)	-	14.7	-	-FL80 +5000	-	RNAV1
TF	ORVUN	-	064°(66.9°)	-	5.8	-	+5000	-	RNAV1
TF	REDKO	-	064°(66.9°)	-	5.0	-	+4000	-	RNAV1
TF	BINPU	-	064°(66.9°)	-	5.0	-	+4000	-200	RNAV1
TF	EDOXI	-	154°(157.1°)	-	6.0	R	+4000	-200	RNAV1
TF	LAVRU	-	244°(247.°)	-	6.0	R	+3500	-185	RNAV1

KOLOR 2P (ATC Discretion)

Path Terminator	Waypoint Identifier	Fly Over	Course °M(°T)	Magnetic Variation	Distance (NM)	Turn Direction	Altitude (ft)	Speed Limit (kt)	Navigation Specification
IF	KOLOR	-	-	-	-	-	-	-	RNAV1
TF	ABSID	-	236(239°)	-	4.0	-	-FL80 +5000	-210	RNAV1
TF	ORVUN	-	154°(157.1°)	-	6.0	-	+5000	-210	RNAV1
TF	REDKO	-	064°(66.9°)	-	5.0	L	+4000	-	RNAV1
TF	BINPU	-	064°(66.9°)	-	5.0		+4000	-200	RNAV1
TF	EDOXI	-	154°(157.1°)	-	6.0	R	+4000	-200	RNAV1
TF	LAVRU	-	244°(247.°)		6.0	R	+3500	-185	RNAV1

LURON 4L

Path Terminator	Waypoint Identifier	Fly Over	Course °M(°T)	Magnetic Variation	Distance (NM)	Turn Direction	Altitude (ft)	Speed Limit (kt)	Navigation Specification
IF	LURON	-	-	-	-	-	-FL190 +FL80	-	RNAV1
TF	IBLET	-	162°(164.9°)	-	19.4	-	+FL80	-	RNAV1
TF	CJ426	-	154°(157.1°)	-	6.0	-	+5000	-210	RNAV1
TF	ABSID	-	244°(247.6°)	-	5.0	R	-FL80 +5000	-210	RNAV1
TF	ORVUN	-	154°(157.1°)	-	6.0	L	+5000	-210	RNAV1
TF	REDKO	-	064°(66.9°)	-	5.0	L	+4000	-	RNAV1
TF	BINPU	-	064°(66.9°)	-	5.0	-	+4000	-200	RNAV1
TF	EDOXI	-	154°(157.1°)	-	6.0	R	+4000	-200	RNAV1
TF	LAVRU	-	244°(247.°)	-	6.0	R	+3500	-185	RNAV1

PAL 4L

Path Terminator	Waypoint Identifier	Fly Over	Course °M(°T)	Magnetic Variation	Distance (NM)	Turn Direction	Altitude (ft)	Speed Limit (kt)	Navigation Specification
IF	PAL	-	-	-	-	-	-FL110 +FL80	-	RNAV1
TF	CJ428	-	345°(348.7°)	-	9.0	-	+FL80	-	RNAV1
TF	CJ412	-	345°(348.7°)	-	6.8	-	-FL80 +5000	-210	RNAV1
TF	ORVUN	-	064°(66.9°)	-	5.8	-	+5000	-	RNAV1
TF	REDKO	-	064°(66.9°)	-	5.0	-	+4000	-	RNAV1
TF	BINPU	-	064°(66.9°)	-	5.0	-	+4000	-200	RNAV1
TF	EDOXI	-	154°(157.1°)	-	6.0	R	+4000	-200	RNAV1
TF	LAVRU	-	244°(247.°)	-	6.0	R	+3500	-185	RNAV1

PAL 1P (ATC Discretion)

Path Terminator	Waypoint Identifier	Fly Over	Course °M(°T)	Magnetic Variation	Distance (NM)	Turn Direction	Altitude (ft)	Speed Limit (kt)	Navigation Specification
IF	PAL	-	-	-	-	-	-	-	RNAV1
TF	CJ427	-	045°(48.1°)	-	11.4	-	+FL80	-	RNAV1
TF	CJ424	-	045°(48.1°)	-	4.0	-	+5000	-200	RNAV1
TF	LAVRU	-	315°(318.3°)	-	4.7	L	+3500	-185	RNAV1

ROSAS 4L

Path Terminator	Waypoint Identifier	Fly Over	Course °M(°T)	Magnetic Variation	Distance (NM)	Turn Direction	Altitude (ft)	Speed Limit (kt)	Navigation Specification
IF	ROSAS	-	-	-	-	-	-FL190 +FL80	-	RNAV1
TF	CJ422	-	186°(189.4°)	-	20.2	-	+FL80	-	RNAV1
TF	CJ423	-	244°(247.8°)	-	5.0	-	+5000	-	RNAV1
TF	CJ426	-	244°(247.8°)	-	5.0	-	+5000	-210	RNAV1
TF	ABSID	-	244°(247.6°)	-	5.0	-	-FL80 +5000	-210	RNAV1
TF	ORVUN	-	154°(157.1°)	-	6.0	L	+5000	-210	RNAV1
TF	REDKO	-	064°(66.9°)	-	5.0	L	+4000	-	RNAV1
TF	BINPU	-	064°(66.9°)	-	5.0	-	+4000	-200	RNAV1
TF	EDOXI	-	154°(157.1°)	-	6.0	R	+4000	-200	RNAV1
TF	LAVRU	-	244°(247.0°)	-	6.0	R	+3500	-185	RNAV1

TRP 3P (ATC Discretion) (1)

Path Terminator	Waypoint Identifier	Fly Over	Course °M(°T)	Magnetic Variation	Distance (NM)	Turn Direction	Altitude (ft)	Speed Limit (kt)	Navigation Specification
IF	TRP	-	-	-	-	-	-	-	RNAV1
TF	CJ411	-	036°(38.9°)	-	23.4	-	-FL190 +FL100	-	RNAV1
TF	CJ412	-	065°(67.8°)	-	14.7	-	-FL80 +5000	-210	RNAV1
TF	ORVUN	-	064°(66.9°)	-	5.8	-	+5000	-	RNAV1
TF	REDKO	-	064°(66.9°)	-	5.0	-	+4000	-	RNAV1
TF	BINPU	-	064°(66.9°)	-	5.0	-	+4000	-200	RNAV1
TF	EDOXI	-	154°(157.1°)	-	6.0	R	+4000	-200	RNAV1
TF	LAVRU	-	244°(247.°)	-	6.0	R	+3500	-185	RNAV1

REMARK

(1) Levels up to FL 160 are usable subject to TRAPANI APP clearance. Due to traffic to/from TRAPANI Birgi Aerodrome, the lowest usable level is FL 100. FL 80 and FL 90 may be flown under specific ATC clearance only.

HOLDING RNAV 1

Path Terminator	Waypoint Identifier	Inbound Course °M (°T)	Leg Distance (NM) (2)	Timing(min.)/Waypoint Distance (NM) (3)	Turn Direction	Minimum Altitude (FT)	Maximum Altitude (FL)	Speed Limit (kt)	Magnetic Variation (°)	Navigation Specification
HM	REDKO	064°(067°)	3.8	- / 5.0	L	4000	-	-210	3°	RNAV1
HM (4)	LAVRU	244°(247°)	3.3	- / -	R	3500	-	-185	3°	RNAV1

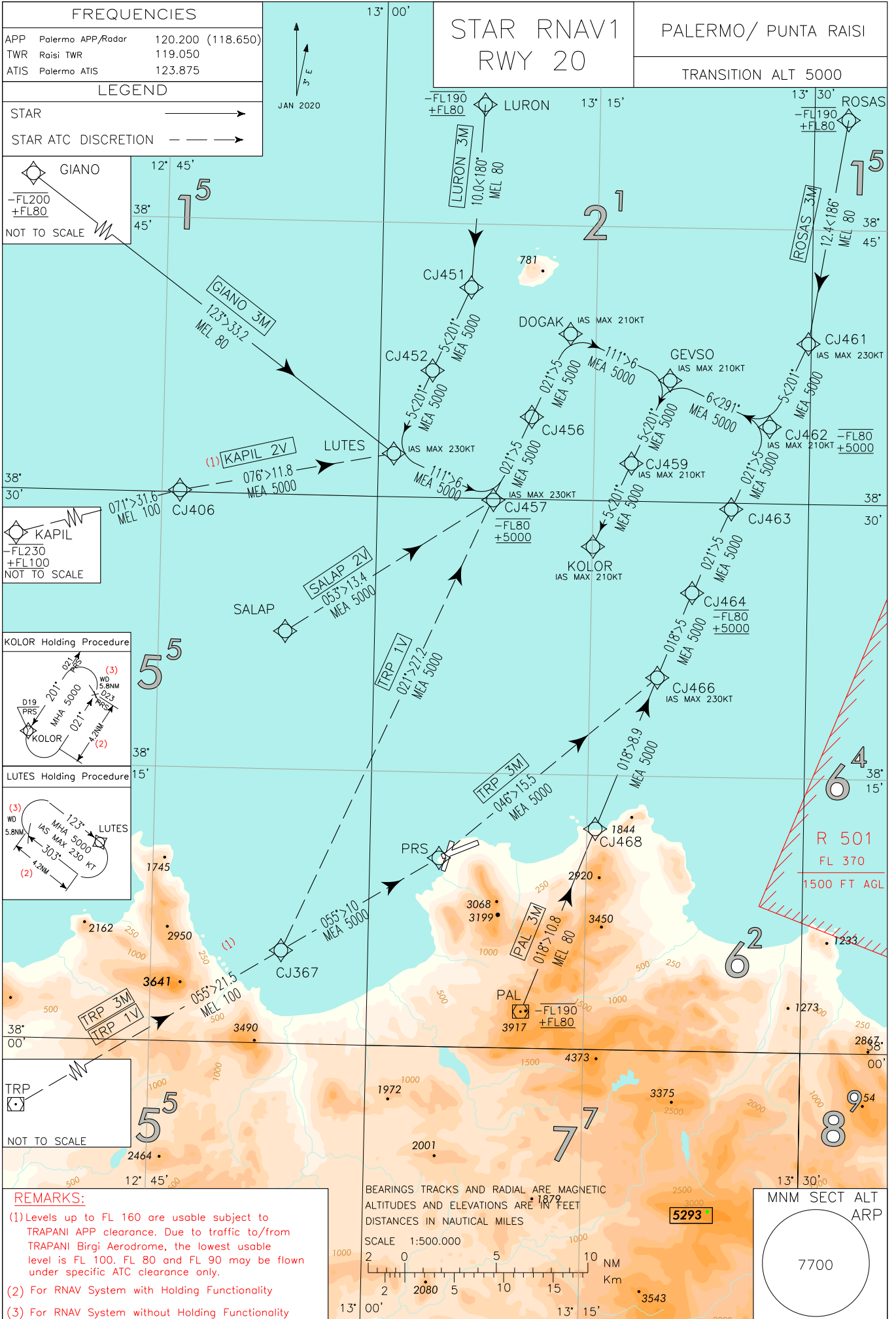
(2) RNAV system with holding functionality

(3) RNAV system without holding functionality

(4) Direct entry only

WAYPOINT LIST

Waypoint Identifier	Coordinates
CJ411	38°11'56.76" N 012°49'23.00" E
CJ412	38°17'30.13" N 013°06'43.26" E
CJ422	38°31'02.53" N 013°28'09.58" E
CJ423	38°29'08.76" N 013°22'15.85" E
CJ424	38°12'15.97" N 013°25'08.77" E
CJ426	38°27'14.69" N 013°16'22.43" E
CJ427	38°09'36.77" N 013°21'22.50" E
CJ428	38°10'52.00" N 013°08'24.49" E



CHANGE: MAG VAR UPDATED AND RENUMBERED CHART

GIANO

12° 45' 38" 45'

15

NOT TO SCALE

KAPIL

FL230
FL100

NOT TO SCALE

KOLOR Holding Procedure

D19 PRS
MHA 5000
D21
KOLOR

(3)
WD 5.8NM
D23
PRSA

(2)
4.2NM

LUTES Holding Procedure

(3)
WD 5.8NM
MHA 5000
IAS MAX 230 KT
LUTES

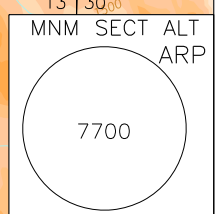
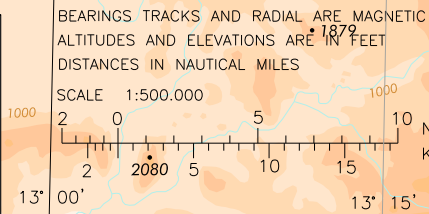
(2)
4.2NM

TRP

NOT TO SCALE

REMARKS:

- Levels up to FL 160 are usable subject to TRAPANI APP clearance. Due to traffic to/from TRAPANI Birgi Aerodrome, the lowest usable level is FL 100. FL 80 and FL 90 may be flown under specific ATC clearance only.
- For RNAV System with Holding Functionality
- For RNAV System without Holding Functionality



PALERMO PUNTA RAISI

STAR RNAV 1 RWY 20

GIANO 3M

Path Terminator	Waypoint Identifier	Fly Over	Course °M(°T)	Magnetic Variation	Distance (NM)	Turn Direction	Altitude (ft)	Speed Limit (kt)	Navigation Specification
IF	GIANO	-	-	-	-	-	-FL200 +FL80	-	RNAV1
TF	LUTES	-	123°(126.2°)	-	33.2	-	+FL80	-230	RNAV1
TF	CJ457	-	111°(113.8°)	-	6.0	-	-FL80 +5000	-230	RNAV1
TF	CJ456	-	021°(023.8°)	-	5.0	L	+5000	-	RNAV1
TF	DOGAK	-	021°(023.8°)	-	5.0	-	+5000	-210	RNAV1
TF	GEVSO	-	111°(113.8°)	-	6.0	R	+5000	-210	RNAV1
TF	CJ459	-	201°(203.9°)	-	5.0	R	+5000	-210	RNAV1
TF	KOLOR	-	201°(203.9°)	-	5.0	-	+5000	-210	RNAV1

KAPIL 2V (ATC Discretion) (1)

Path Terminator	Waypoint Identifier	Fly Over	Course °M(°T)	Magnetic Variation	Distance (NM)	Turn Direction	Altitude (ft)	Speed Limit (kt)	Navigation Specification
IF	KAPIL	-	-	-	-	-	-FL230 +FL100	-	RNAV1
TF	CJ406	-	071°(073.8°)	-	31.6	-	+FL100	-	RNAV1
TF	LUTES	-	076°(079.0°)	-	11.8	-	+5000	-230	RNAV1
TF	CJ457	-	111°(113.8°)	-	6.0	-	-FL80 +5000	-230	RNAV1
TF	CJ456	-	021°(023.8°)	-	5.0	L	+5000	-	RNAV1
TF	DOGAK	-	021°(023.8°)	-	5.0	-	+5000	-210	RNAV1
TF	GEVSO	-	111°(113.8°)	-	6.0	R	+5000	-210	RNAV1
TF	CJ459	-	201°(203.9°)	-	5.0	R	+5000	-210	RNAV1
TF	KOLOR	-	201°(203.9°)	-	5.0	-	+5000	-210	RNAV1

LURON 3M

Path Terminator	Waypoint Identifier	Fly Over	Course °M(°T)	Magnetic Variation	Distance (NM)	Turn Direction	Altitude (ft)	Speed Limit (kt)	Navigation Specification
IF	LURON	-	-	-	-	-	-FL190 +FL80	-	RNAV1
TF	CJ451	-	180°(183.2°)	-	10.0	-	+FL80	-	RNAV1
TF	CJ452	-	201°(203.9°)	-	5.0	-	+5000	-	RNAV1
TF	LUTES	-	201°(203.9°)	-	5.0	-	+5000	-230	RNAV1
TF	CJ457	-	111°(113.8°)	-	6.0	L	-FL80 +5000	-230	RNAV1
TF	CJ456	-	021°(023.8°)	-	5.0	L	+5000	-	RNAV1
TF	DOGAK	-	021°(023.8°)	-	5.0	-	+5000	-210	RNAV1
TF	GEVSO	-	111°(113.8°)	-	6.0	R	+5000	-210	RNAV1
TF	CJ459	-	201°(203.9°)	-	5.0	R	+5000	-210	RNAV1
TF	KOLOR	-	201°(203.9°)	-	5.0	-	+5000	-210	RNAV1

PAL 3M

Path Terminator	Waypoint Identifier	Fly Over	Course °M(°T)	Magnetic Variation	Distance (NM)	Turn Direction	Altitude (ft)	Speed Limit (kt)	Navigation Specification
IF	PAL	-	-	-	-	-	-FL190 +FL80	-	RNAV1
TF	CJ468	-	018°(021.1°)	-	10.8	-	+FL80	-	RNAV1
TF	CJ466	-	018°(021.3°)	-	8.9	-	+5000	-230	RNAV1
TF	CJ464	-	018°(021.3°)	-	5.0	-	-FL80 +5000	-	RNAV1
TF	CJ463	-	021°(023.9°)	-	5.0	-	+5000	-	RNAV1
TF	CJ462	-	021°(023.9°)	-	5.0	-	-FL 80 +5000	-210	RNAV1
TF	GEVSO	-	291°294.1°)	-	6.0	L	+5000	-210	RNAV1
TF	CJ459	-	201°(203.9°)	-	5.0	L	+5000	-210	RNAV1
TF	KOLOR	-	201°(203.9°)	-	5.0	-	+5000	-210	RNAV1

ROSAS 3M

Path Terminator	Waypoint Identifier	Fly Over	Course °M(°T)	Magnetic Variation	Distance (NM)	Turn Direction	Altitude (ft)	Speed Limit (kt)	Navigation Specification
IF	ROSAS	-	-	-	-	-	-FL190 +FL80	-	RNAV1
TF	CJ461	-	186°(189.3°)	-	12.4	-	+FL80	-230	RNAV1
TF	CJ462	-	201°(203.9°)	-	5.0	-	-FL 80 +5000	-210	RNAV1
TF	GEVSO	-	291°294.1°)	-	6.0	R	+5000	-210	RNAV1
TF	CJ459	-	201°(203.9°)	-	5.0	L	+5000	-210	RNAV1
TF	KOLOR	-	201°(203.9°)	-	5.0	-	+5000	-210	RNAV1

SALAP 2V (ATC Discretion)

Path Terminator	Waypoint Identifier	Fly Over	Course °M(°T)	Magnetic Variation	Distance (NM)	Turn Direction	Altitude (ft)	Speed Limit (kt)	Navigation Specification
IF	SALAP	-	-	-	-	-	-	-	RNAV1
TF	CJ457	-	053°(056.5°)	-	13.4	-	-FL80 +5000	-230	RNAV1
TF	CJ456	-	021°(023.8°)	-	5.0	-	+5000	-	RNAV1
TF	DOGAK	-	021°(023.8°)	-	5.0	-	+5000	-210	RNAV1
TF	GEVSO	-	111°(113.8°)	-	6.0	R	+5000	-210	RNAV1
TF	CJ459	-	201°(203.9°)	-	5.0	R	+5000	-210	RNAV1
TF	KOLOR	-	201°(203.9°)	-	5.0	-	+5000	-210	RNAV1

TRP 3M (ATC Discretion) (1)

Path Terminator	Waypoint Identifier	Fly Over	Course °M(°T)	Magnetic Variation	Distance (NM)	Turn Direction	Altitude (ft)	Speed Limit (kt)	Navigation Specification
IF	TRP	-	-	-	-	-	-	-	RNAV1
TF	CJ367	-	055°(058.2°)	-	21.5	-	+FL100	-	RNAV1
TF	PRS	-	055°(058.4°)	-	10.0	-	+5000	-	RNAV1
TF	CJ466	-	046°(049.3°)	-	15.5	-	+5000	-230	RNAV1
TF	CJ464	-	018°(021.3°)	-	5.0	-	-FL80 +5000	-	RNAV1
TF	CJ463	-	021°(023.9°)	-	5.0	-	+5000	-	RNAV1
TF	CJ462	-	021°(023.9°)	-	5.0	-	-FL 80 +5000	-210	RNAV1
TF	GEVSO	-	291°294.1°)	-	6.0	L	+5000	-210	RNAV1
TF	CJ459	-	201°(203.9°)	-	5.0	L	+5000	-210	RNAV1
TF	KOLOR	-	201°(203.9°)	-	5.0	-	+5000	-210	RNAV1

TRP 1V (ATC Discretion) (1)

Path Terminator	Waypoint Identifier	Fly Over	Course °M(°T)	Magnetic Variation	Distance (NM)	Turn Direction	Altitude (ft)	Speed Limit (kt)	Navigation Specification
IF	TRP	-	-	-	-	-	-	-	RNAV1
TF	CJ367	-	055°(058.2°)	-	21.5	-	+FL100	-	RNAV1
TF	CJ457	-	021°(023.8°)	-	27.2	-	-FL80 +5000	-230	RNAV1
TF	CJ456	-	021°(023.8°)	-	5.0	-	+5000	-	RNAV1
TF	DOGAK	-	021°(023.8°)	-	5.0	-	+5000	-210	RNAV1
TF	GEVSO	-	111°(113.8°)	-	6.0	R	+5000	-210	RNAV1
TF	CJ459	-	201°(203.9°)	-	5.0	R	+5000	-210	RNAV1
TF	KOLOR	-	201°(203.9°)	-	5.0	-	+5000	-210	RNAV1

REMARK

(1) Levels up to FL 160 are usable subject to TRAPANI APP clearance. Due to traffic to/from TRAPANI Birgi Aerodrome, the lowest usable level is FL 100. FL 80 and FL 90 may be flown under specific ATC clearance only.

HOLDING RNAV 1

Path Terminator	Waypoint Identifier	Inbound Course °M (°T)	Leg Distance (NM) (2)	Timing(min.)/Waypoint Distance (NM) (3)	Turn Direction	Minimum Altitude (FT)	Maximum Altitude (FL)	Speed Limit (kt)	Magnetic Variation (°)	Navigation Specification
HM	LUTES	123°(126.2°)	4.2	5.8	R	5000		-230	3°	RNAV1
HM	KOLOR	201°(204.0°)	4.2	5.8	L	5000	-	-	3°	RNAV1

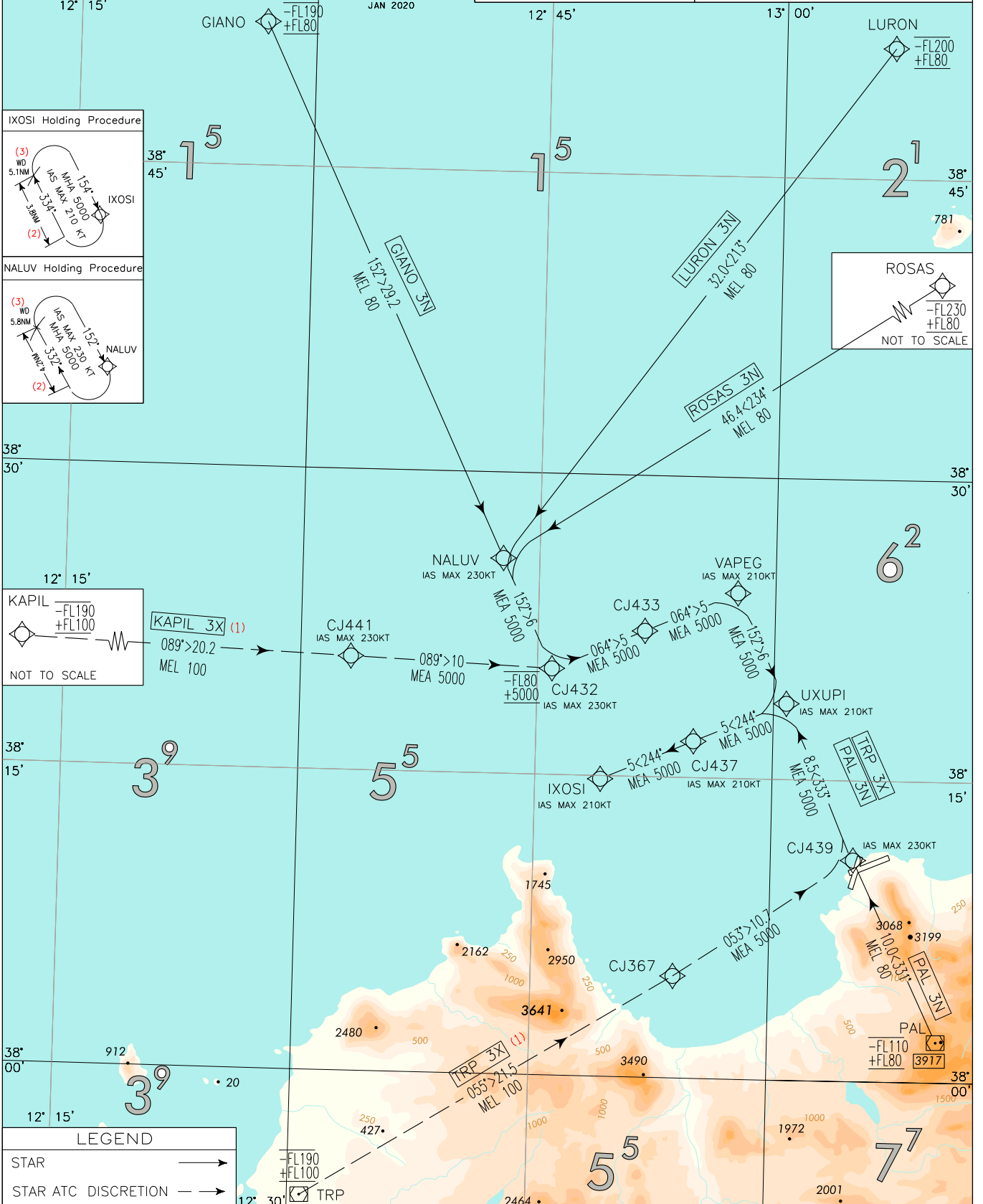
(2) RNAV system with holding functionality

(3) RNAV system without holding functionality

WAYPOINT LIST

Waypoint Identifier	Coordinates
CJ367	38°05'05.60" N 012°53'59.55" E
CJ406	38°30'07.15" N 012°46'15.08" E
CJ451	38°41'31.48" N 013°06'13.88" E
CJ452	38°36'56.87" N 013°03'38.83" E
CJ456	38°34'31.27" N 013°10'37.40" E
CJ457	38°29'56.32" N 013°08'03.55" E
CJ459	38°32'04.80" N 013°17'36.77" E
CJ461	38°38'46.19" N 013°29'48.30" E
CJ462	38°34'12.07" N 013°27'11.82" E
CJ463	38°29'40.42" N 013°24'37.11" E
CJ464	38°25'03.67" N 013°21'59.84" E
CJ466	38°20'23.87" N 013°19'41.15" E
CJ468	38°12'04.50" N 013°15'34.37" E

FREQUENCIES APP Palermo APP/Radar 120.200 (118.650) TWR Raisi TWR 119.050 ATIS Palermo ATIS 123.875		STAR RNAV1 RWY 07	PALERMO/ PUNTA RAISI
			TRANSITION ALT 5000



CHANGE: MAG VAR UPDATED AND RENUMBERED CHART

LEGEND	
STAR	→
STAR ATC DISCRETION	→

REMARKS:

(1) Levels up to FL 160 are usable subject to TRAPANI APP clearance. Due to traffic to/from TRAPANI Birgi Aerodrome, the lowest usable level is FL 100. FL 80 and FL 90 may be flown under specific ATC clearance only.

(2) For RNAV System with Holding Functionality

(3) For RNAV System without Holding Functionality

BEARINGS TRACKS AND RADIAL ARE MAGNETIC
 ALTITUDES AND ELEVATIONS ARE IN FEET
 DISTANCES IN NAUTICAL MILES

SCALE 1:500.000

446 2 0 5 10 15 20 NM
 700 1000 1500 Km

MNM SECT ALT
 7700
 ARP

PALERMO PUNTA RAISI

STAR RNAV 1 RWY 07

GIANO 3N

Path Terminator	Waypoint Identifier	Fly Over	Course °M(°T)	Magnetic Variation	Distance (NM)	Turn Direction	Altitude (ft)	Speed Limit (kt)	Navigation Specification
IF	GIANO	-	-	-	-	-	-FL190 +FL80	-	RNAV1
TF	NALUV	-	152°(154.7°)	-	29.2	-	+FL80	-230	RNAV1
TF	CJ432	-	152°(154.9°)	-	6.0	-	-FL80 +5000	-230	RNAV1
TF	CJ433	-	064°(066.7°)	-	5.0	L	+5000	-	RNAV1
TF	VAPEG	-	064°(066.7°)	-	5.0	-	+5000	-210	RNAV1
TF	UXUPI	-	152°(155.2°)	-	6.0	R	+5000	-210	RNAV1
TF	CJ437	-	244°(246.3°)	-	5.0	R	+5000	-210	RNAV1
TF	IXOSI	-	244°(246.3°)	-	5.0	-	+5000	-210	RNAV1

KAPIL 3X (ATC Discretion) (1)

Path Terminator	Waypoint Identifier	Fly Over	Course °M(°T)	Magnetic Variation	Distance (NM)	Turn Direction	Altitude (ft)	Speed Limit (kt)	Navigation Specification
IF	KAPIL	-	-	-	-	-	-FL190 +FL100	-	RNAV1
TF	CJ441	-	089°(091.8°)	-	20.2	-	+FL100	-230	RNAV1
TF	CJ432	-	089°(092.1°)	-	10.0	-	-FL80 +5000	-230	RNAV1
TF	CJ433	-	064°(066.7°)	-	5.0	-	+5000	-	RNAV1
TF	VAPEG	-	064°(066.7°)	-	5.0	-	+5000	-210	RNAV1
TF	UXUPI	-	152°(155.2°)	-	6.0	R	+5000	-210	RNAV1
TF	CJ437	-	244°(246.3°)	-	5.0	R	+5000	-210	RNAV1
TF	IXOSI	-	244°(246.3°)	-	5.0	-	+5000	-210	RNAV1

LURON 3N

Path Terminator	Waypoint Identifier	Fly Over	Course °M(°T)	Magnetic Variation	Distance (NM)	Turn Direction	Altitude (ft)	Speed Limit (kt)	Navigation Specification
IF	LURON	-	-	-	-	-	-FL200 +FL80	-	RNAV1
TF	NALUV	-	213°(216.5°)	-	32.0	-	+FL80	-230	RNAV1
TF	CJ432	-	152°(154.9°)	-	6.0	-	-FL80 +5000	-230	RNAV1
TF	CJ433	-	064°(066.7°)	-	5.0	L	+5000	-	RNAV1
TF	VAPEG	-	064°(066.7°)	-	5.0	-	+5000	-210	RNAV1
TF	UXUPI	-	152°(155.2°)	-	6.0	R	+5000	-210	RNAV1
TF	CJ437	-	244°(246.3°)	-	5.0	R	+5000	-210	RNAV1
TF	IXOSI	-	244°(246.3°)	-	5.0	-	+5000	-210	RNAV1

PAL 3N

Path Terminator	Waypoint Identifier	Fly Over	Course °M(°T)	Magnetic Variation	Distance (NM)	Turn Direction	Altitude (ft)	Speed Limit (kt)	Navigation Specification
IF	PAL	-	-	-	-	-	-FL110 +FL80	-	RNAV1
TF	CJ439	-	331°(334.6°)	-	10.0	-	+FL80	-230	RNAV1
TF	UXUPI	-	333°(335.8°)	-	8.5	-	+5000	-210	RNAV1
TF	CJ437	-	244°(246.3°)	-	5.0	L	+5000	-210	RNAV1
TF	IXOSI	-	244°(246.3°)	-	5.0	-	+5000	-210	RNAV1

ROSAS 3N

Path Terminator	Waypoint Identifier	Fly Over	Course °M(°T)	Magnetic Variation	Distance (NM)	Turn Direction	Altitude (ft)	Speed Limit (kt)	Navigation Specification
IF	ROSAS	-	-	-	-	-	-FL230 +FL80	-	RNAV1
TF	NALUV	-	234°(237.2°)	-	46.4	-	+FL80	-230	RNAV1
TF	CJ432	-	152°(154.9°)	-	6.0	-	-FL80 +5000	-230	RNAV1
TF	CJ433	-	063°(066.7°)	-	5.0	L	+5000	-	RNAV1
TF	VAPEG	-	063°(066.7°)	-	5.0	-	+5000	-210	RNAV1
TF	UXUPI	-	152°(155.2°)	-	6.0	R	+5000	-210	RNAV1
TF	CJ437	-	244°(246.3°)	-	5.0	R	+5000	-210	RNAV1
TF	IXOSI	-	244°(246.3°)	-	5.0	-	+5000	-210	RNAV1

TRP 3X (ATC Discretion) (1)

Path Terminator	Waypoint Identifier	Fly Over	Course °M(°T)	Magnetic Variation	Distance (NM)	Turn Direction	Altitude (ft)	Speed Limit (kt)	Navigation Specification
IF	TRP	-	-	-	-	-	-FL190 +FL100	-	RNAV1
TF	CJ367	-	055°(058.2°)	-	21.5	-	+FL100	-	RNAV1
TF	CJ439	-	053°(056.1°)	-	10.7	-	+5000	-230	RNAV1
TF	UXUPI	-	333°(335.8°)	-	8.5	L	+5000	-210	RNAV1
TF	CJ437	-	244°(246.3°)	-	5.0	L	+5000	-210	RNAV1
TF	IXOSI	-	244°(246.3°)	-	5.0	-	+5000	-210	RNAV1

REMARK

(1) Levels up to FL 160 are usable subject to TRAPANI APP clearance. Due to traffic to/from TRAPANI Birgi Aerodrome, the lowest usable level is FL 100. FL 80 and FL 90 may be flown under specific ATC clearance only.

HOLDING RNAV 1

Path Terminator	Waypoint Identifier	Inbound Course °M (°T)	Leg Distance (NM) (2)	Timing(min.)/ Waypoint Distance (NM) (3)	Turn Direction	Minimum Altitude (FT)	Maximum Altitude (FL)	Speed Limit (kt)	Magnetic Variation (°)	Navigation Specification
HM	NALUV	152°(154.7°)	4.2	5.8	R	5000		-230	3°	RNAV1
HM	IXOSI	154°(156.9°)	3.8	5.1	R	5000	-	-210	3°	RNAV1

(2) RNAV system with holding functionality

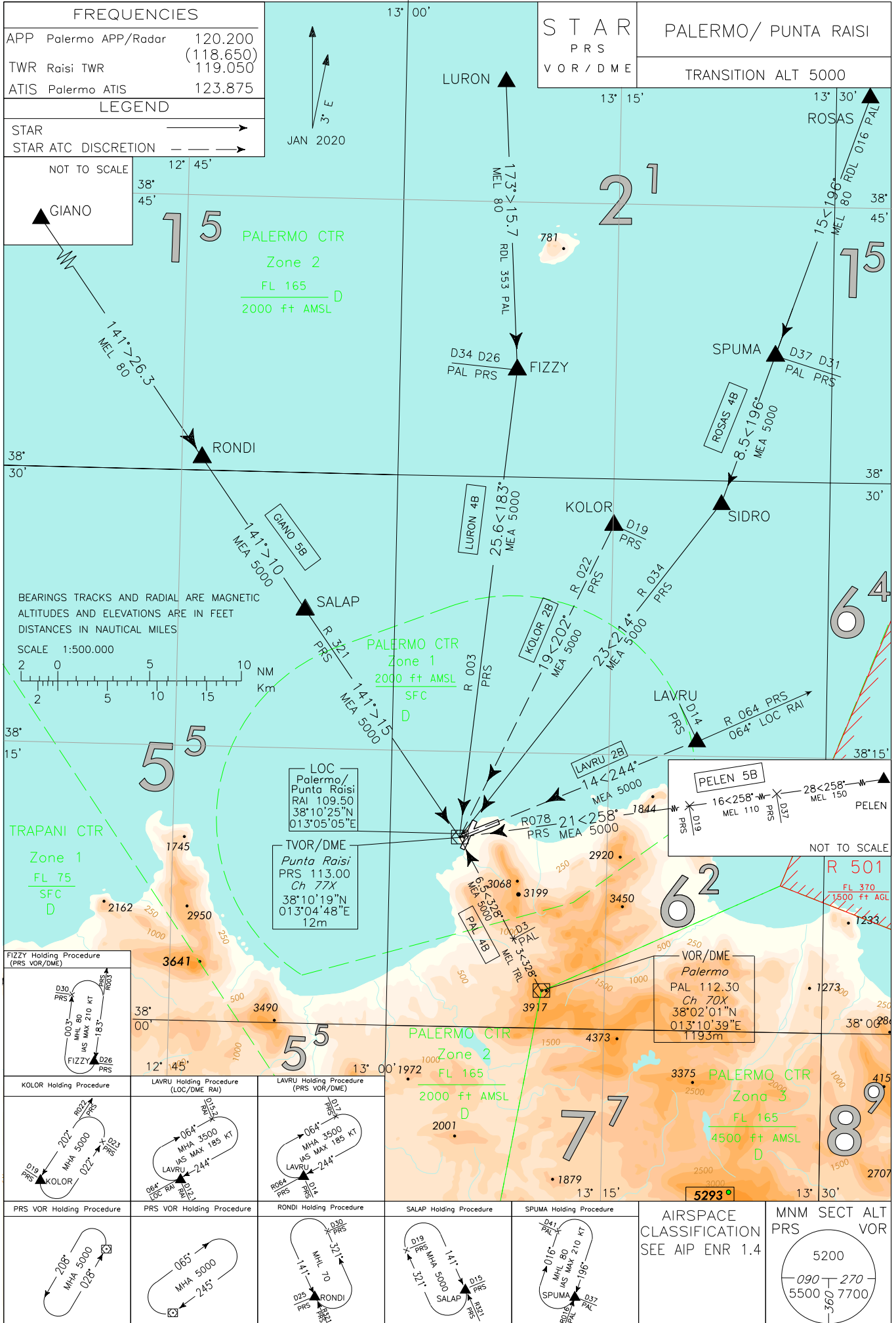
(3) RNAV system without holding functionality

WAYPOINT LIST

Waypoint Identifier	Coordinates
CJ367	38°05'05.60" N 012°53'59.55" E
CJ432	38°20'16.97" N 012°45'55.36" E
CJ433	38°22'15.65" N 012°51'45.68" E
CJ437	38°16'48.67" N 012°54'58.26" E
CJ439	38°11'02.31" N 013°05'13.38" E
CJ441	38°20'39.96" N 012°33'11.00" E

Intenzionalmente bianca

Intentionally left blank



CHANGE: MAG VAR UPDATED; PELEN 5B UPDATED; RENUMBERED CHART

STAR DESCRIPTION**GIANO 5B**

Proceed via GIANO – TR 141° (RDL 321 PRS VOR) – RONDI – SALAP – PRS VOR/DME.

MEL/MEA: GIANO – RONDI: FL 80; RONDI – SALAP – PRS VOR/DME: 5000 FT

KOLOR 2B (ATC discretion)

Proceed on TR 202° (RDL 022 PRS VOR) bound to PRS VOR/DME.

MEA: KOLOR – PRS VOR/DME: 5000 FT

LAVRU 2B (ATC discretion)

Proceed on TR 244° (RDL 064 PRS VOR) bound to PRS VOR/DME.

MEA: LAVRU – PRS VOR/DME: 5000 FT

LURON 4B

Proceed via LURON – TR 173° (RDL 353 PAL VOR) – FIZZY, then turn right on TR 183° (RDL 003 PRS VOR) bound to PRS VOR/DME.

MEL/MEA: LURON – FIZZY: FL 80; FIZZY – PRS VOR/DME: 5000 FT

PAL 4B

Proceed via PAL VOR – TR 328° (RDL 328 PAL VOR or RDL 148 PRS VOR) – PRS VOR/DME.

MEL: PAL VOR – INT RDL 328/3NM PAL VOR/DME: TRL; INT RDL 328/3NM PAL VOR/DME - PRS VOR/DME: 5000 FT

PELEN 5B (ATC discretion)

Proceed via PELEN – TR 258° (RDL 078 PRS VOR) bound to PRS VOR/DME.

MEL/MEA: PELEN – INT RDL 078/37NM PRS VOR/DME: FL 150; INT RDL 078/37NM PRS VOR/DME –
INT RDL 078/19NM PRS VOR/DME: FL 110; INT RDL 078/19NM PRS VOR/DME – PRS VOR/DME: 5000 FT

ROSAS 4B

Proceed via ROSAS – TR 196° (RDL 016 PAL VOR) – SPUMA – SIDRO, then turn right on TR 214° (RDL 034 PRS VOR) bound to PRS VOR/DME.

MEL/MEA: ROSAS – SPUMA: FL 80; SPUMA – SIDRO – PRS VOR/DME: 5000 FT

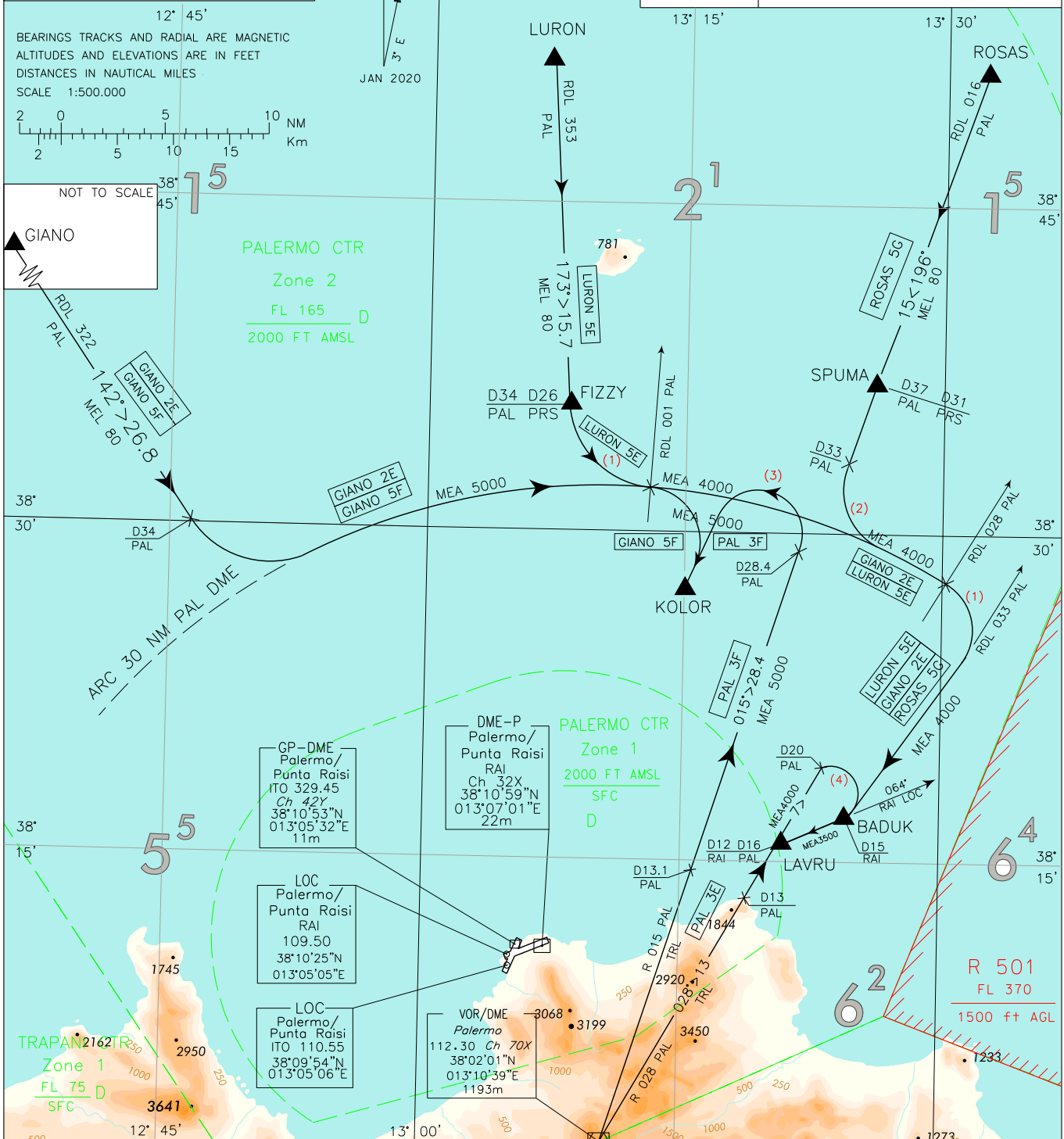
Intenzionalmente bianca

Intentionally left blank

FREQUENCIES		
APP	Palermo APP/Radar	120.200 (118.650)
TWR	Raisi TWR	119.050
ATIS	Palermo ATIS	123.875

STAR
PAL
VOR/DME

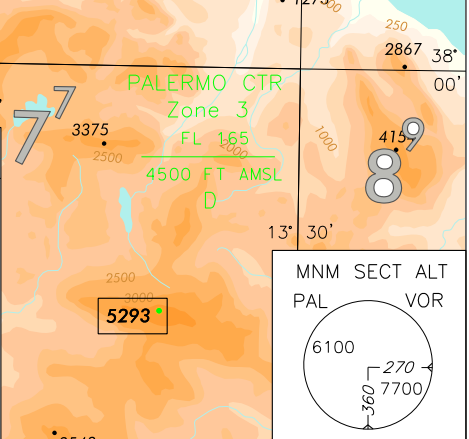
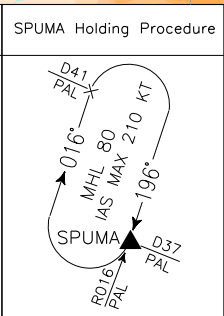
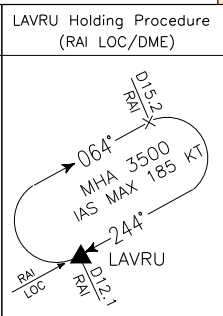
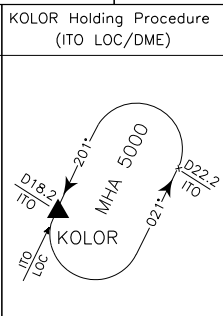
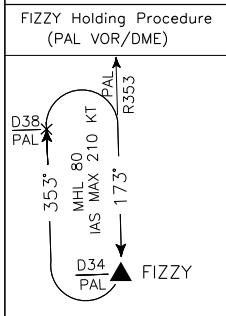
PALERMO/ PUNTA RAISI
TRANSITION ALT 5000



CHANGE: MAG VAR UPDATED AND RENUMBERED CHART

AIRSPACE CLASSIFICATION SEE AIP ENR 1.4

- REMARKS:
- (1) IAS MAX 200 KT
 - (2) IAS MAX 210 KT
 - (3) IAS MAX 230 KT
 - (4) IAS MAX 185 KT



STAR DESCRIPTION**GIANO 2E**

Proceed via GIANO follow RDL 322 PAL VOR (TR 142°), at 34NM PAL DME turn left to join ARC 30 NM PAL DME, crossing RDL 028 PAL VOR turn right (IAS MAX 200 kt during turn) to join and follow RDL 033 PAL VOR bound to BADUK, then LAVRU.

MEL/MEA: GIANO – INT RDL 322/34NM PAL VOR/DME: FL 80;
INT RDL 322/34NM PAL VOR/DME – INT ARC 30NM PAL DME / RDL 001 PAL VOR: 5000FT;
INT ARC 30NM PAL DME / RDL 001 PAL VOR - BADUK: 4000FT; BADUK – LAVRU: 3500 FT

GIANO 5F

Proceed via GIANO follow RDL 322 PAL VOR (TR 142°), at 34NM PAL DME turn left to join ARC 30NM PAL DME, crossing RDL 001 PAL VOR turn right bound to KOLOR.

MEL/MEA: GIANO – INT RDL 322/34NM PAL VOR/DME: FL 80;
INT RDL 322/34NM PAL VOR/DME - KOLOR: 5000 FT

LURON 5E

Proceed via LURON – TR 173° (RDL 353 PAL VOR) – FIZZY, then turn left until joining ARC 30 NM PAL DME until joining RDL 028 PAL VOR, then turn right (IAS MAX 200 kt during turn) to join and follow RDL 033 PAL VOR bound to BADUK, then LAVRU.

MEL/MEA: LURON – FIZZY: FL 80; FIZZY – BADUK: 4000FT; BADUK – LAVRU: 3500FT

PAL 3E

Proceed via PAL VOR follow RDL 028 PAL VOR (TR 028°), at 20NM PAL DME turn right (IAS MAX 185 kt during turn) bound to BADUK, then LAVRU.

MEL/MEA: PAL VOR – INT RDL 028/13NM PAL VOR/DME: TRL;
INT RDL 028/13NM PAL VOR/DME – BADUK: 4000FT; BADUK – LAVRU: 3500 FT

PAL 3F

Proceed via PAL VOR follow RDL 015 PAL VOR (TR 015°), at 28.4NM PAL DME turn left (IAS MAX 230KT during turn) bound to KOLOR.

MEL/MEA: PAL VOR – INT RDL 015/13.1NM PAL VOR/DME: TRL;
INT RDL 015/13.1NM PAL VOR/DME – KOLOR: 5000FT

ROSAS 5G

ROSAS - TR 196° (RDL 016 PAL VOR) - SPUMA - RDL 016/33 NM PAL VOR/DME, then turn left until joining ARC 30 NM PAL DME (IAS MAX 210KT during turn) until joining RDL 028 PAL VOR, then turn right (IAS MAX 200 kt during turn) bound to BADUK, then LAVRU.

MEL/MEA: ROSAS - SPUMA: FL80; SPUMA – BADUK: 4000FT; BADUK - LAVRU: 3500FT

Intenzionalmente bianca

Intentionally left blank