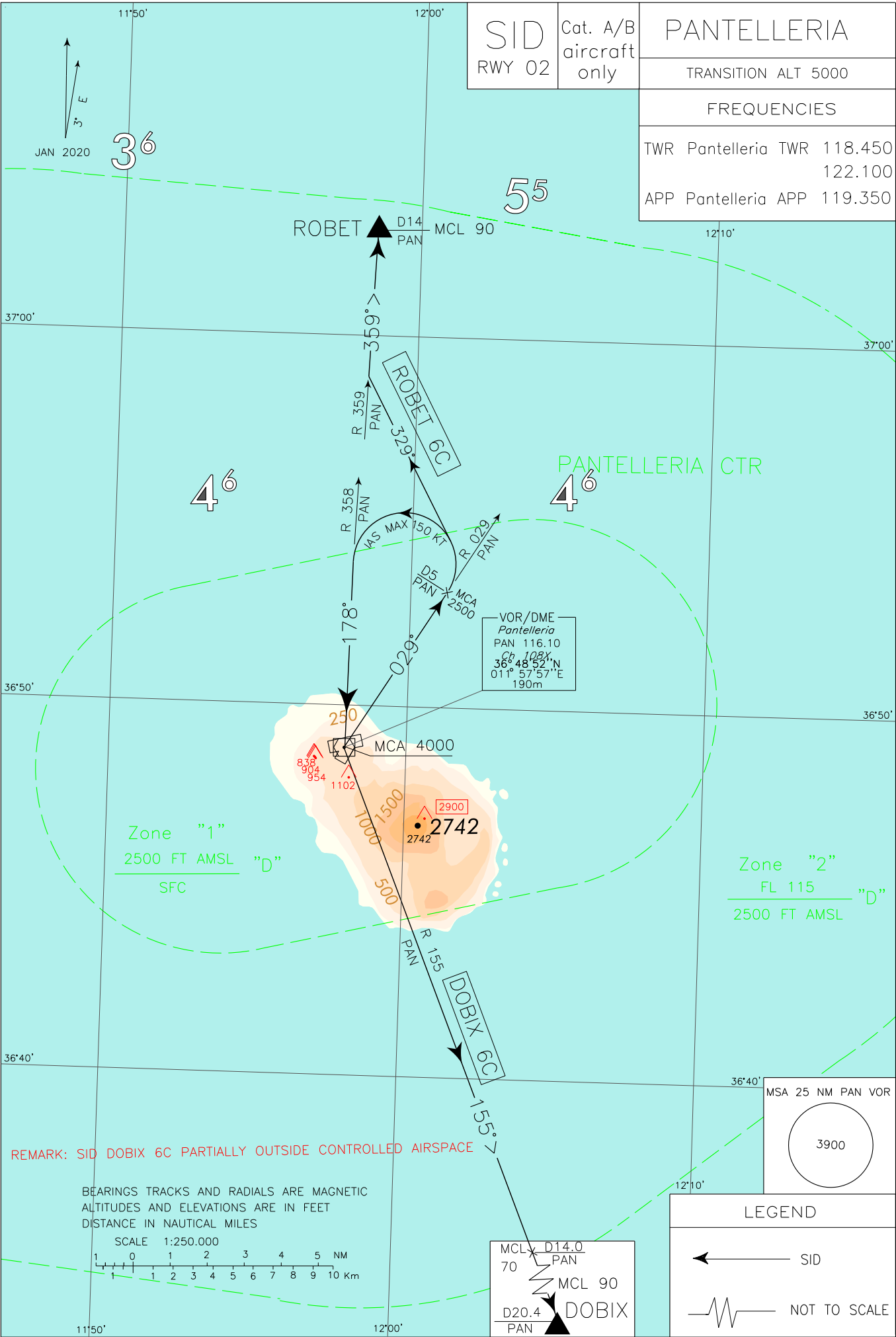


SID RWY 02	Cat. A/B aircraft only	PANTELLERIA
		TRANSITION ALT 5000
		FREQUENCIES
		TWR Pantelleria TWR 118.450 122.100
		APP Pantelleria APP 119.350



CHANGE: DOBIX 6C UPDATED

INITIAL CLIMB PROCEDURE RWY 02

After take off proceed on RDL 029 PAN VOR (TR 029°) until 5NM PAN DME, to be reached at 2500 ft or above.

WARNING: “Close-in” obstacles penetrating OIS 2.5% exist, but they were not considered for the published procedure design gradient.

REMARK:

- Minimum climb gradient 7% (425 ft/NM) until leaving 4000 ft.
- Turn after take off shall be executed with IAS MAX 150 kt.

SID DESCRIPTION RWY 02

Initial climb procedure executed:

DOBIX 6C

Turn left (IAS MAX 150 kt during turn) until joining RDL 358 PAN VOR (TR 178°) bound to PAN VOR, to be reached at 4000 ft or above. Then leave PAN VOR on RDL 155 (TR 155°) bound to DOBIX point.

MCA/MCL: PAN VOR/DME, 4000FT; RDL155/14NM PAN VOR/DME FL 70; DOBIX, FL 90.

ROBET 6C

Turn left (IAS MAX 150 kt during turn) on TR 329° until joining RDL 359 PAN VOR (TR 359°) bound to ROBET point.

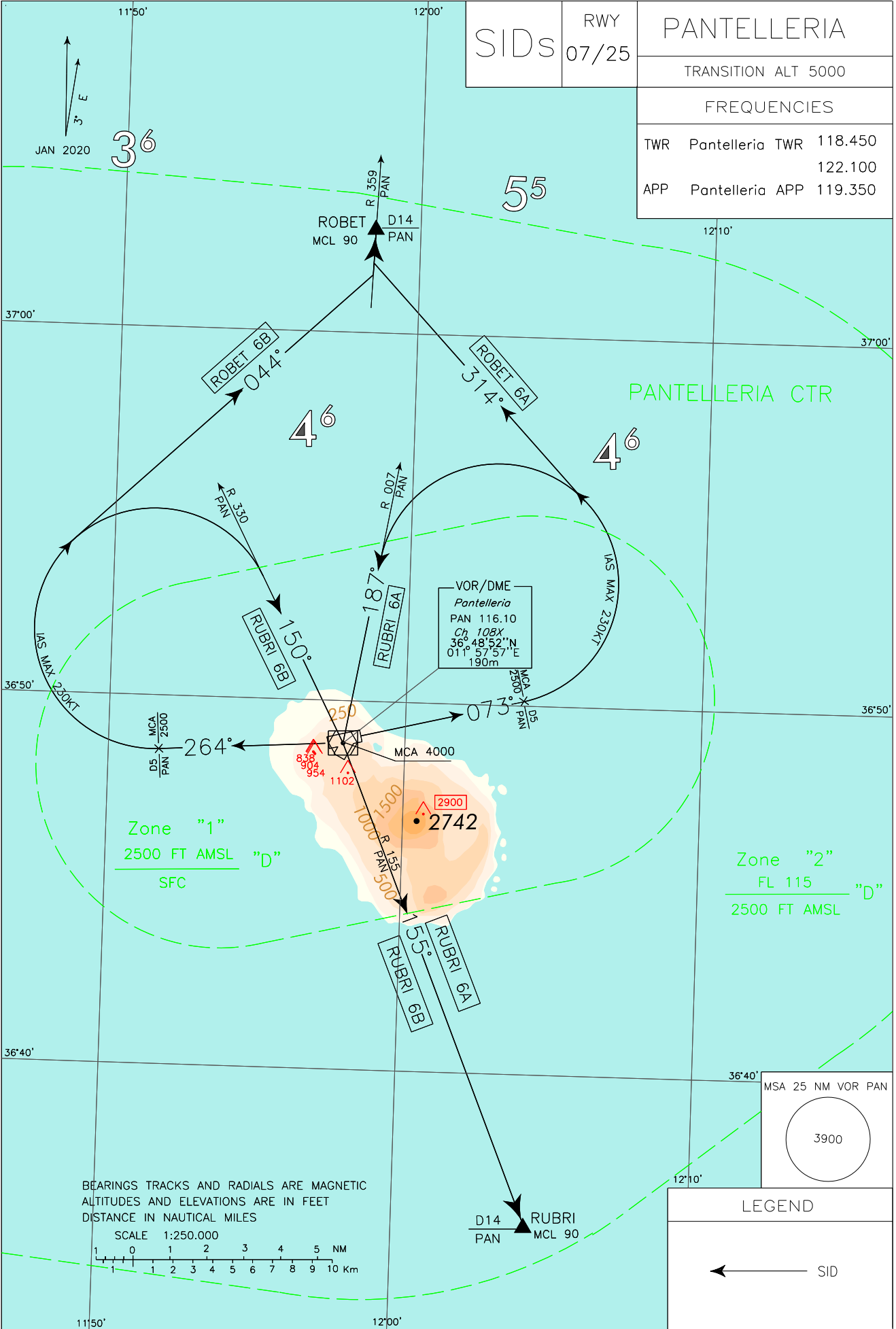
MCL: ROBET, FL 90

Intenzionalmente bianca

Intentionally left blank

SIDs	RWY	PANTELLERIA	
	07/25	TRANSITION ALT 5000	
FREQUENCIES			
TWR	Pantelleria TWR	118.450	
		122.100	
APP	Pantelleria APP	119.350	

CHANGE: MAGNETIC DECLINATION AND AMA UPDATED; RWY DESIGNATION



SID DESCRIPTION**SID RWY 07**

WARNING: “Close-in” obstacles penetrating OIS 2.5% exist, but they were not considered for the published procedure design gradient.

REMARK:

- Minimum climb gradient 7% (425 ft/NM) until passing 4000 ft.
- Turn after take-off IAS MAX 230 kt.

RUBRI 6A

Proceed on TR 073° , at 5 NM PAN DME, to be reached at 2500 ft or above, turn left to join RDL 007 PAN VOR (TR 187°) direct to PAN VOR/DME, to be reached at 4000 ft or above. Leave PAN VOR on RDL 155 (TR 155°) bound to RUBRI.

MCA/MCL: RDL 073/5 NM PAN VOR/DME 2500FT; PAN VOR/DME 4000FT; RUBRI FL 90.

ROBET 6A

Proceed on TR 073° , at 5 NM PAN DME, to be reached at 2500 ft or above, turn left on TR 314° until joining RDL 359 PAN VOR bound to ROBET.

MCA/MCL: RDL 073/5 NM PAN VOR/DME 2500FT; ROBET FL 90.

SID RWY 25**REMARK:**

- Due to significant obstacles located south-west of the aerodrome, minimum climb gradient 10.5% (640 ft/NM) until passing 4000 ft. If unable to maintain the established climb gradient, the take-off should be performed under visual condition only, until reaching 2500 ft AMSL
- Turn after take-off IAS MAX 230 kt.

RUBRI 6B

Proceed on TR 264° , at 5 NM PAN DME, to be reached at 2500 ft or above, turn right to join RDL 330 PAN VOR (TR 150°) direct to PAN VOR/DME, to be reached at 4000 ft or above. Leave PAN VOR on RDL 155 (TR 155°) bound to RUBRI.

MCA/MCL: RDL 264/5 NM PAN VOR/DME 2500FT; PAN VOR/DME 4000FT; RUBRI FL 90.

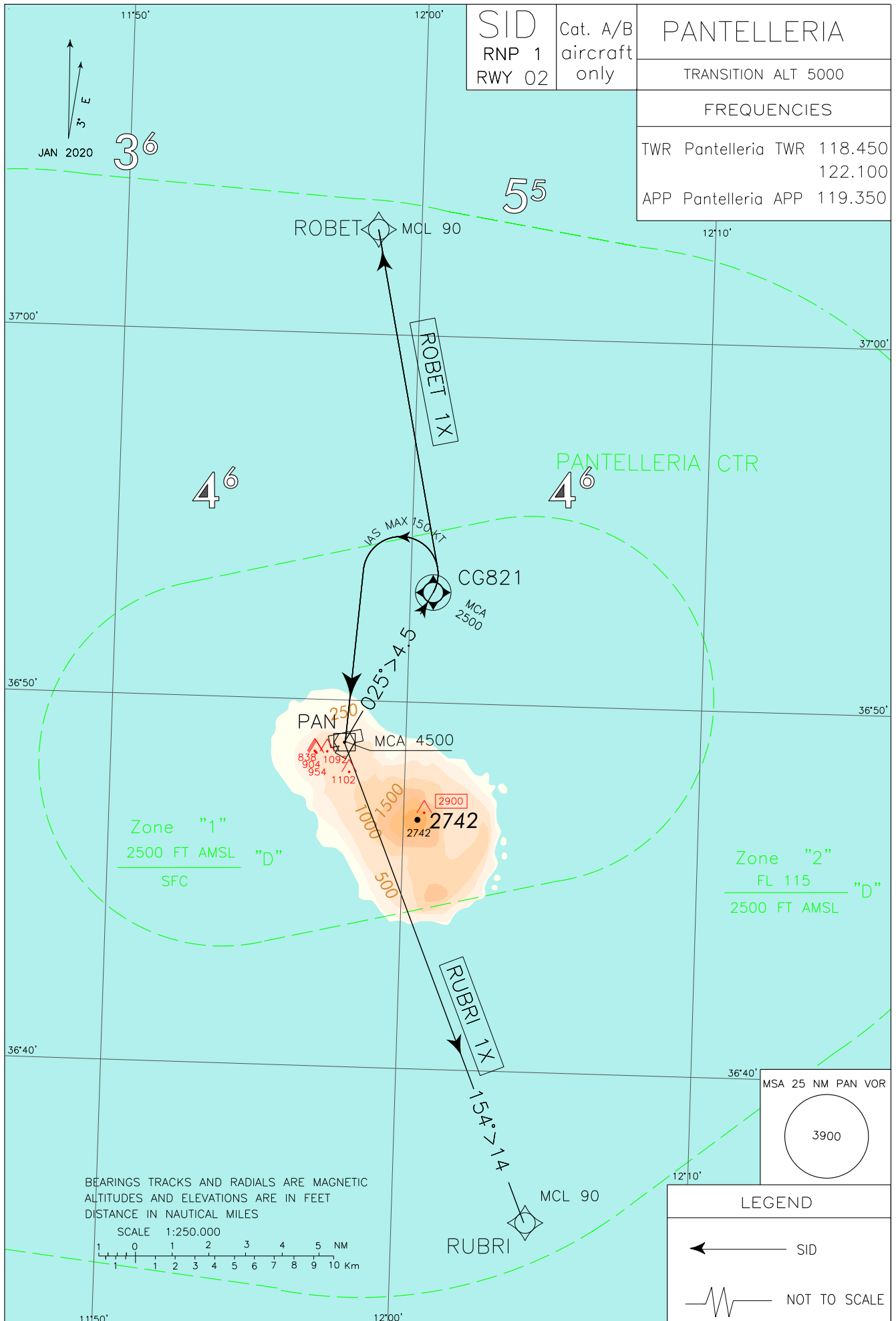
ROBET 6B

Proceed on TR 264° , at 5 NM PAN DME, to be reached at 2500 ft or above, turn right on TR 044° until joining RDL 359 PAN VOR bound to ROBET.

MCA/MCL: RDL 264/5 NM PAN VOR/DME 2500FT; ROBET FL 90.

Intenzionalmente bianca

Intentionally left blank



NEW CHART

INITIAL CLIMB PROCEDURE RWY 02

WARNING: “Close-in” obstacles penetrating OIS 2.5% exist, but they were not considered for the published procedure design gradient.

REMARK: Minimum climb gradient 7% (425 ft/NM) until leaving 4500 ft.

SID DESCRIPTION RWY 02**ROBET 1X**

Path Terminator	Waypoint Identifier	Fly Over	Course °M(°T)	Magnetic Variation	Distance (NM)	Turn Direction	Altitude (ft)	Speed Limit (kt)	Navigation Specification
CA	-	-	-	-	-	-	+988	-	RNP1
CF	CG821	Y	025 (027.8)	+3	4.5	-	+2500	-150	RNP1
DF	ROBET	-	-	-	-	-	+FL90	-	RNP1

RUBRI 1X

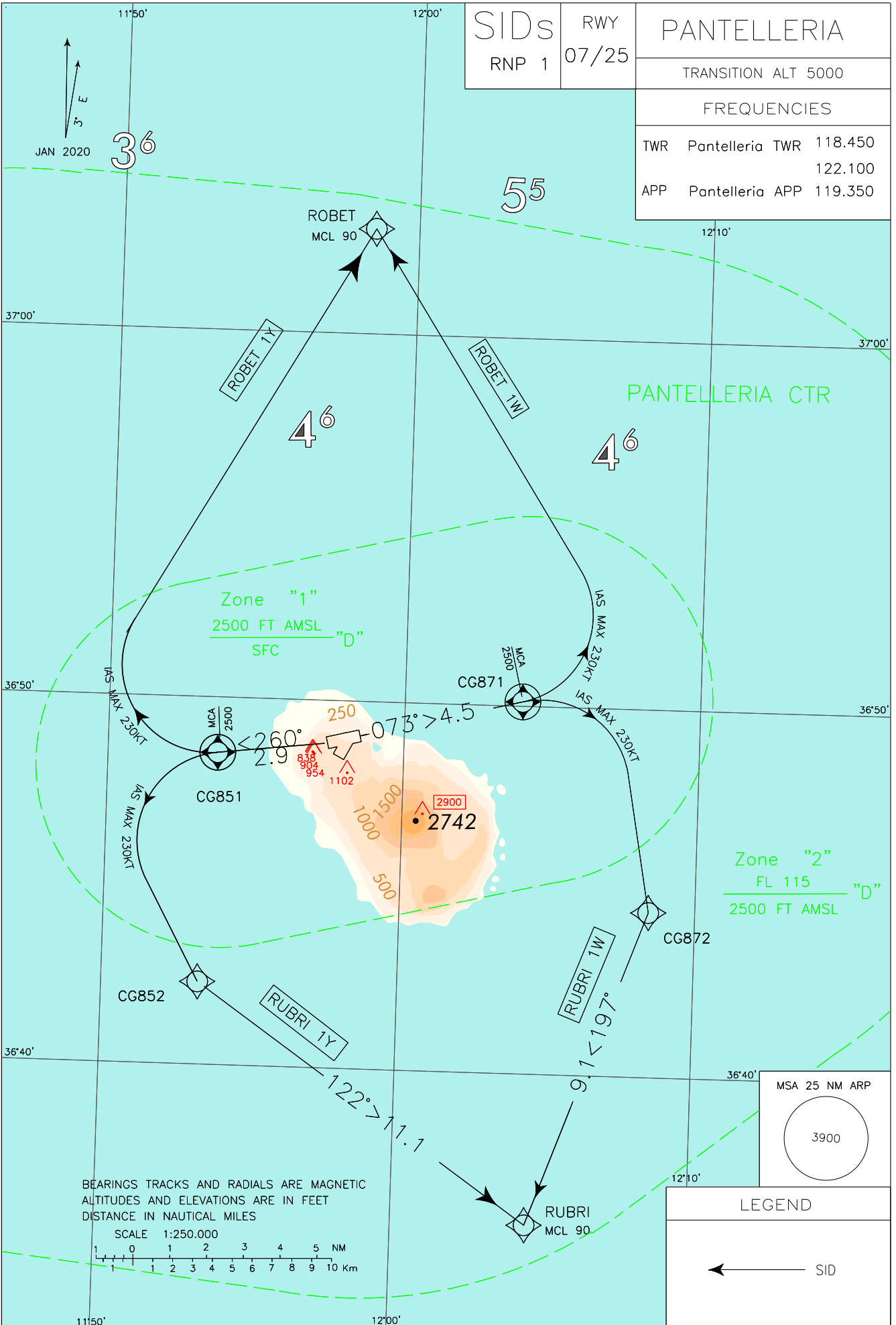
Path Terminator	Waypoint Identifier	Fly Over	Course °M(°T)	Magnetic Variation	Distance (NM)	Turn Direction	Altitude (ft)	Speed Limit (kt)	Navigation Specification
CA	-	-	-	-	-	-	+988	-	RNP1
CF	CG821	Y	025 (027.8)	+3	4.5	-	+2500	-150	RNP1
DF	PAN	-	-	-	-	L	+4500	-	RNP1
TF	RUBRI	-	154 (157.7)	-	14.0	-	+FL90	-	RNP1

WAYPOINT LIST

Waypoint Identifier	Coordinates
CG821	36°53'00.5"N 012°00'46.1"E

Intenzionalmente bianca

Intentionally left blank



NEW CHART

SID DESCRIPTION RWY 07

WARNING: “Close-in” obstacles penetrating OIS 2.5% exist, but they were not considered for the published procedure design gradient.

REMARK: Minimum climb gradient 7% (425 ft/NM) until leaving 4500 ft.

ROBET 1W

Path Terminator	Waypoint Identifier	Fly Over	Course °M(°T)	Magnetic Variation	Distance (NM)	Turn Direction	Altitude (ft)	Speed Limit (kt)	Navigation Specification
CA	-	-	-	-	-	-	+996	-	RNP1
CF	CG871	Y	073 (076.4)	+3	4.5	-	+2500	-230	RNP1
DF	ROBET	-	-	-	-	-	+FL90	-	RNP1

RUBRI 1W

Path Terminator	Waypoint Identifier	Fly Over	Course °M(°T)	Magnetic Variation	Distance (NM)	Turn Direction	Altitude (ft)	Speed Limit (kt)	Navigation Specification
CA	-	-	-	-	-	-	+996	-	RNP1
CF	CG871	Y	073 (076.4)	+3	4.5	-	+2500	-230	RNP1
DF	CG872	-	-	-	-	R	-	-	RNP1
TF	RUBRI	-	197 (200.1)	-	9.1	-	+FL90	-	RNP1

SID DESCRIPTION RWY 25

WARNING: “Close-in” obstacles penetrating OIS 2.5% exist, but they were not considered for the published procedure design gradient.

REMARK: Due to significant obstacles located south-west of the aerodrome, minimum climb gradient 10.5% (640 ft/NM) until passing 4500 ft. If unable to maintain the established climb gradient, the take-off should be performed under visual condition only, until reaching 2500 ft AMSL

ROBET 1Y

Path Terminator	Waypoint Identifier	Fly Over	Course °M(°T)	Magnetic Variation	Distance (NM)	Turn Direction	Altitude (ft)	Speed Limit (kt)	Navigation Specification
CA	-	-	-	-	-	-	+1029	-	RNP1
CF	CG851	Y	260 (263.4)	+3	2.9	-	+2500	-230	RNP1
DF	ROBET	-	-	-	-	-	+FL90	-	RNP1

RUBRI 1Y

Path Terminator	Waypoint Identifier	Fly Over	Course °M(°T)	Magnetic Variation	Distance (NM)	Turn Direction	Altitude (ft)	Speed Limit (kt)	Navigation Specification
CA	-	-	-	-	-	-	+1029	-	RNP1
CF	CG851	Y	260 (263.4)	+3	2.9	-	+2500	-230	RNP1
DF	CG852	-	-	-	-	L	-	-	RNP1
TF	RUBRI	-	122 (124.9)	-	11.1	-	+FL90	-	RNP1

WAYPOINT LIST

Waypoint Identifier	Coordinates
CG851	36°48'29.5"N 011°53'43.0"E
CG852	36°42'14.7"N 011°53'16.0"E
CG871	36°50'07.3"N 012°03'58.6"E
CG872	36°44'29.1"N 012°08'25.8"E