

SID
RWY 08/26

LAMPEDUSA	
TRANSITION ALT 5000	
FREQUENCIES	
TWR	Lampedusa TWR 123.500
APP	Lampedusa APP 118.030

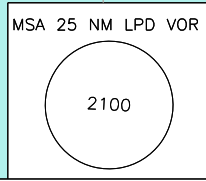


REMARK:
(1) IAS MAX 210KT

LAMPEDUSA CTR ZONA 2
FL 65
1500FT AMSL
D

LAMPEDUSA CTR ZONA 1
1500FT AMSL
SFC
D

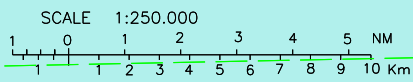
DVOR/DME
Lampedusa
LPD 108.60
Ch 23X
35°29'59"N
012°37'51"E
27m



REMARK(1): IAS MAX 210KT

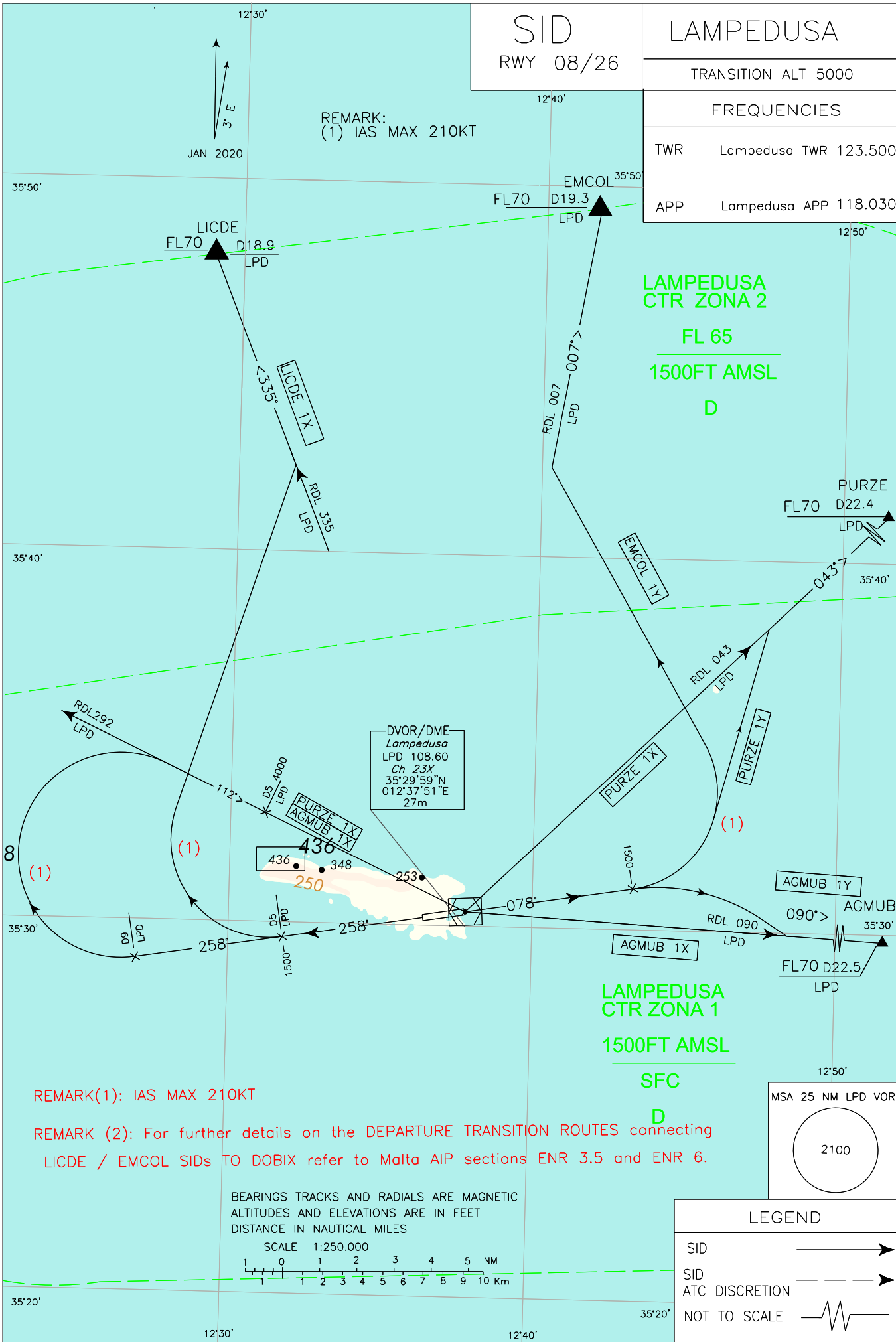
REMARK (2): For further details on the DEPARTURE TRANSITION ROUTES connecting LICDE / EMCOL SIDs TO DOBIX refer to Malta AIP sections ENR 3.5 and ENR 6.

BEARINGS TRACKS AND RADIALS ARE MAGNETIC
ALTITUDES AND ELEVATIONS ARE IN FEET
DISTANCE IN NAUTICAL MILES



LEGEND	
SID	—————>
SID ATC DISCRETION	- - - - ->
NOT TO SCALE	~~~~~

CHANGE: REVISED PROCEDURES



SID DESCRIPTION**RWY 08****PURZE 1Y**

Proceed on TR 078° (RDL 078LPD VOR), not below 1500 ft, turn left (IAS MAX 210KT) until joining RDL 043 LPD VOR bound to PURZE (RDL 043/22.4 NM LPD VOR/DME).

MCA/MCL: PURZE FL70

REMARK:

Minimum Climb Gradient: 5.0% (300FT/NM) until reaching FL70

EMCOL 1Y

Proceed on TR 078° (RDL 078LPD VOR), not below 1500 ft, turn left (IAS MAX 210KT) until joining RDL 007 LPD VOR bound to EMCOL (RDL 007/19.3 NM LPD VOR/DME).

MCA/MCL: EMCOL FL70

REMARK:

Minimum Climb Gradient: 5.0% (300FT/NM) until reaching FL70

AGMUB 1Y

Proceed on TR 078° (RDL 078LPD VOR), not below 1500 ft, turn right until joining RDL 090 LPD VOR bound to AGMUB (RDL 090/22.5 NM LPD VOR/DME).

MCA/MCL: AGMUB FL70

REMARK:

Minimum Climb Gradient: 5.0% (300FT/NM) until reaching FL70

RWY 26**LICDE 1X**

Proceed on TR 258° (RDL 258 LPD VOR), at 5 NM LPD DME, not below 1500 ft, turn right (IAS MAX 210KT) until joining RDL 335 LPD VOR bound to LICDE (RDL 335/18.9 NM LPD VOR/DME).

MCA/MCL: RDL 258/5NM LPD VOR/DME 1500FT; LICDE FL70

REMARK:

Minimum Climb Gradient: 5.0% (300FT/NM) until reaching FL70

PURZE 1X

Proceed on TR 258° (RDL 258 LPD VOR), at 9 NM LPD DME turn right (IAS MAX 210KT) until joining RDL 292 LPD VOR direct to LPD VOR then follow RDL 043 LPD VOR bound to PURZE (RDL 043/22.4 NM LPD VOR/DME).

MCA/MCL: RDL 292/5NM LPD VOR/DME 4000FT; PURZE FL70

REMARK:

Minimum Climb Gradient: 7.1% (430FT/NM) until reaching 4000FT

AGMUB 1X

Proceed on TR 258° (RDL 258 LPD VOR), at 9 NM LPD DME turn right (IAS MAX 210KT) until joining RDL 292 LPD VOR direct to LPD VOR then follow RDL 090 LPD VOR bound to AGMUB (RDL 090/22.5 NM LPD VOR/DME).

MCA/MCL: RDL 292/5NM LPD VOR/DME 4000FT; AGMUB FL70

REMARK:

Minimum Climb Gradient: 7.1% (430FT/NM) until reaching 4000FT

Intenzionalmente bianca

Intentionally left blank

SIDs RNP1

LAMPEDUSA

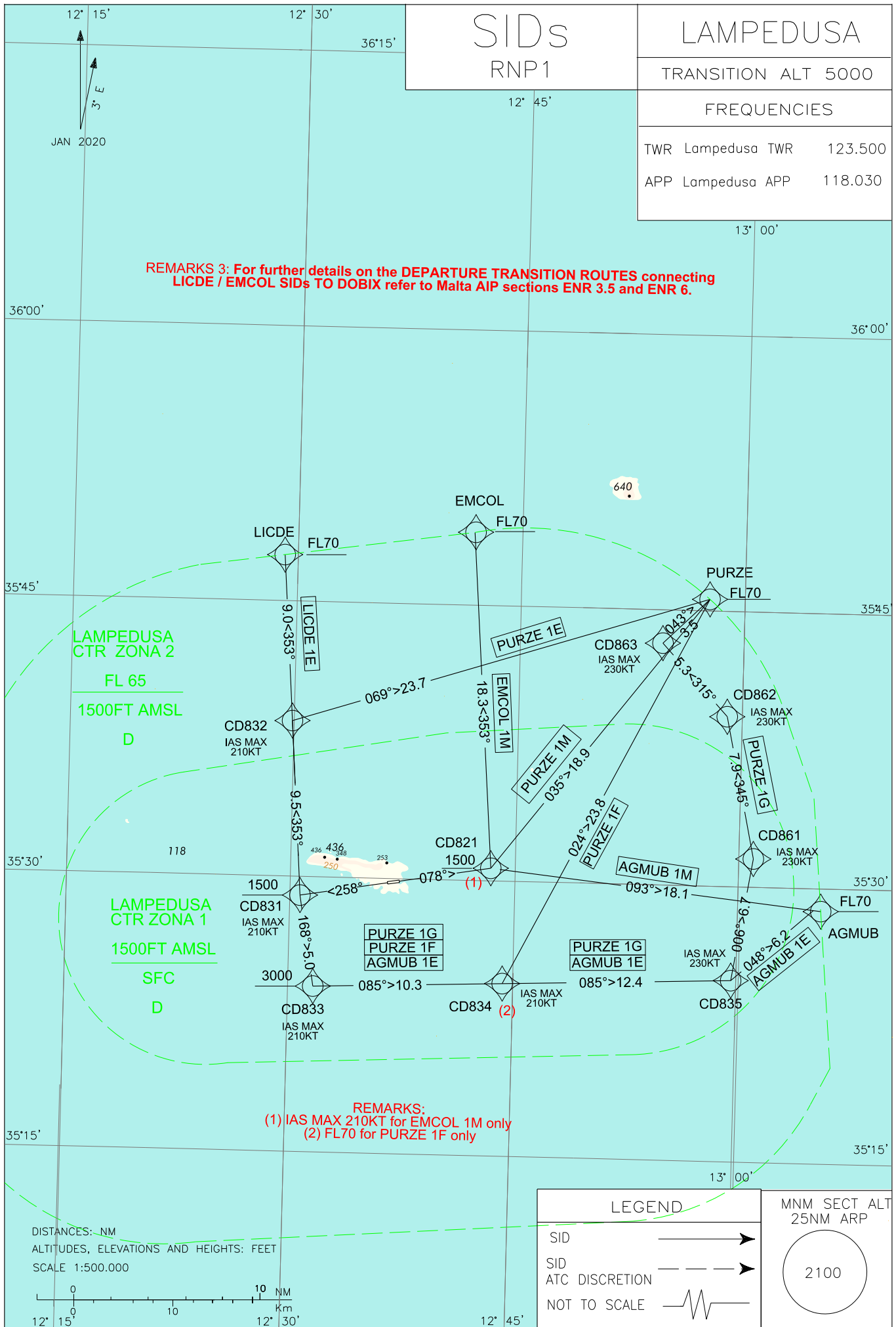
TRANSITION ALT 5000

FREQUENCIES

TWR Lampedusa TWR	123.500
APP Lampedusa APP	118.030

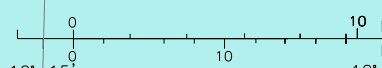
REMARKS 3: For further details on the DEPARTURE TRANSITION ROUTES connecting LICDE / EMCOL SIDs TO DOBIX refer to Malta AIP sections ENR 3.5 and ENR 6.

NEW CHART



REMARKS:
 (1) IAS MAX 210KT for EMCOL 1M only
 (2) FL70 for PURZE 1F only

DISTANCES: NM
 ALTITUDES, ELEVATIONS AND HEIGHTS: FEET
 SCALE 1:500.000



LEGEND		MNM SECT ALT 25NM ARP 2100
SID		
SID ATC DISCRETION		
NOT TO SCALE		

INITIAL CLIMB PROCEDURE RWY 08

WARNING: “Close-in” obstacles penetrating OIS 2.5% exist, but they were not considered for the published procedure design gradient.

SID DESCRIPTION RWY 08**PURZE 1M**

Path Terminator	Waypoint Identifier	Fly Over	Course °M(°T)	Magnetic Variation	Distance (NM)	Turn Direction	Altitude (ft)	Speed Limit (kt)	Navigation Specification
CA	-	-	078 (080.6)	+3	-	-	+466	-	RNP1
CF	CD821	-	078 (080.6)	+3	-	-	+1500	-	RNP1
TF	PURZE	-	035 (037.9)	-	18.9	-	+FL70	-	RNP1

REMARK: Minimum climb gradient 5% (300 ft/NM) .

EMCOL 1M

Path Terminator	Waypoint Identifier	Fly Over	Course °M(°T)	Magnetic Variation	Distance (NM)	Turn Direction	Altitude (ft)	Speed Limit (kt)	Navigation Specification
CA	-	-	078 (080.6)	+3	-	-	+466	-	RNP1
CF	CD821	-	078 (080.6)	+3	-	-	+1500	-210	RNP1
TF	EMCOL	-	353 (356.2)	-	18.3	-	+FL70	-	RNP1

REMARK: Minimum climb gradient 5% (300 ft/NM) .

AGMUB 1M

Path Terminator	Waypoint Identifier	Fly Over	Course °M(°T)	Magnetic Variation	Distance (NM)	Turn Direction	Altitude (ft)	Speed Limit (kt)	Navigation Specification
CA	-	-	078 (080.6)	+3	-	-	+466	-	RNP1
CF	CD821	-	078 (080.6)	+3	-	-	+1500	-	RNP1
TF	AGMUB	-	093 (096.2)	-	18.1	-	+FL70	-	RNP1

REMARK: Minimum climb gradient 5% (300 ft/NM) .

INITIAL CLIMB PROCEDURE RWY 26

WARNING: “Close-in” obstacles penetrating OIS 2.5% exist, but they were not considered for the published procedure design gradient.

SID DESCRIPTION RWY 26

LICDE 1E

Path Terminator	Waypoint Identifier	Fly Over	Course °M(°T)	Magnetic Variation	Distance (NM)	Turn Direction	Altitude (ft)	Speed Limit (kt)	Navigation Specification
CA	-	-	258 (260.6)	+3	-	-	+444	-	RNP1
CF	CD831	-	258 (260.6)	+3	-	-	+1500	-210	RNP1
TF	CD832	-	353 (356.0)	-	9.5	R	-	-210	RNP1
TF	LICDE	-	353 (356.0)	-	9.0	-	+FL70	-	RNP1

REMARK: Minimum climb gradient 5% (300 ft/NM) .

PURZE 1E

Path Terminator	Waypoint Identifier	Fly Over	Course °M(°T)	Magnetic Variation	Distance (NM)	Turn Direction	Altitude (ft)	Speed Limit (kt)	Navigation Specification
CA	-	-	258 (260.6)	+3	-	-	+444	-	RNP1
CF	CD831	-	258 (260.6)	+3	-	-	+1500	-210	RNP1
TF	CD832	-	353 (356.0)	-	9.5	R	-	-210	RNP1
TF	PURZE	-	069 (072.4)	-	23.7	-	+FL70	-	RNP1

REMARK: Minimum climb gradient 5% (300 ft/NM) till reaching 1500FT AMSL.

AGMUB 1E

Path Terminator	Waypoint Identifier	Fly Over	Course °M(°T)	Magnetic Variation	Distance (NM)	Turn Direction	Altitude (ft)	Speed Limit (kt)	Navigation Specification
CA	-	-	258 (260.6)	+3	-	-	+444	-	RNP1
CF	CD831	-	258 (260.6)	+3	-	-	+1500	-210	RNP1
TF	CD833	-	168 (170.6)	-	5.0	L	+3000	-210	RNP1
TF	CD834	-	085 (087.9)	-	10.3	-	-	-210	RNP1
TF	CD835	-	085 (087.9)	-	12.4	-	-	-	RNP1
TF	AGMUB	-	048 (051.4)	-	6.2	-	+FL70	-	RNP1

REMARK: Minimum climb gradient 5% (300 ft/NM) till reaching 3000FT AMSL.

PURZE 1F

Path Terminator	Waypoint Identifier	Fly Over	Course °M(°T)	Magnetic Variation	Distance (NM)	Turn Direction	Altitude (ft)	Speed Limit (kt)	Navigation Specification
CA	-	-	258 (260.6)	+3	-	-	+444	-	RNP1
CF	CD831	-	258 (260.6)	+3	-	-	+1500	-210	RNP1
TF	CD833	-	168 (170.6)	-	5.0	L	+3000	-210	RNP1
TF	CD834	-	085 (087.9)	-	10.3	-	+FL70	-210	RNP1
TF	PURZE	-	024 (027.1)	-	23.8	-	+FL70	-	RNP1

REMARK: Minimum climb gradient 6% (365 ft/NM) till reaching FL70.

PURZE 1G

Path Terminator	Waypoint Identifier	Fly Over	Course °M(°T)	Magnetic Variation	Distance (NM)	Turn Direction	Altitude (ft)	Speed Limit (kt)	Navigation Specification
CA	-	-	258 (260.6)	+3	-	-	+444	-	RNP1
CF	CD831	-	258 (260.6)	+3	-	-	+1500	-210	RNP1
TF	CD833	-	168 (170.6)	-	5.0	L	+3000	-210	RNP1
TF	CD834	-	085 (087.9)	-	10.3	-	-	-210	RNP1
TF	CD835	-	085 (087.9)	-	12.4	-	-	-230	RNP1
TF	CD861	-	006 (009.4)	-	6.7	-	-	-230	RNP1
TF	CD862	-	345 (348.4)	-	7.9	-	-	-230	RNP1
TF	CD863	-	315 (317.6)	-	5.3	-	-	-230	RNP1
TF	PURZE	-	043 (045.9)	-	3.5	-	+FL70	-230	RNP1

REMARK: Minimum climb gradient 5% (300 ft/NM) till reaching 3000FT AMSL.

WAYPOINT LIST

Waypoint Identifier	Coordinates
CD821	35° 30' 43.3 N 012° 43' 20.9 E
CD831	35° 29' 00.6 N 012° 30' 40.3 E
CD832	35° 38' 30.2 N 012° 29' 52.3 E
CD833	35° 24' 04.2 N 012° 31' 40.4 E
CD834	35° 24' 26.8 N 012° 44' 17.0 E
CD835	35° 24' 52.8 N 012° 59' 29.6 E
CD861	35° 31' 32.3 N 013° 00' 50.6 E
CD862	35° 39' 15.5 N 012° 58' 54.5 E
CD863	35° 43' 11.7 N 012° 54' 30.5 E

Intenzionalmente bianca

Intentionally left blank