

CHANGE: NDB 'LPD' COMPLETELY WITHDRAWN, LAMPEDUSA CTR MODIFIED AND UPDATED CHART

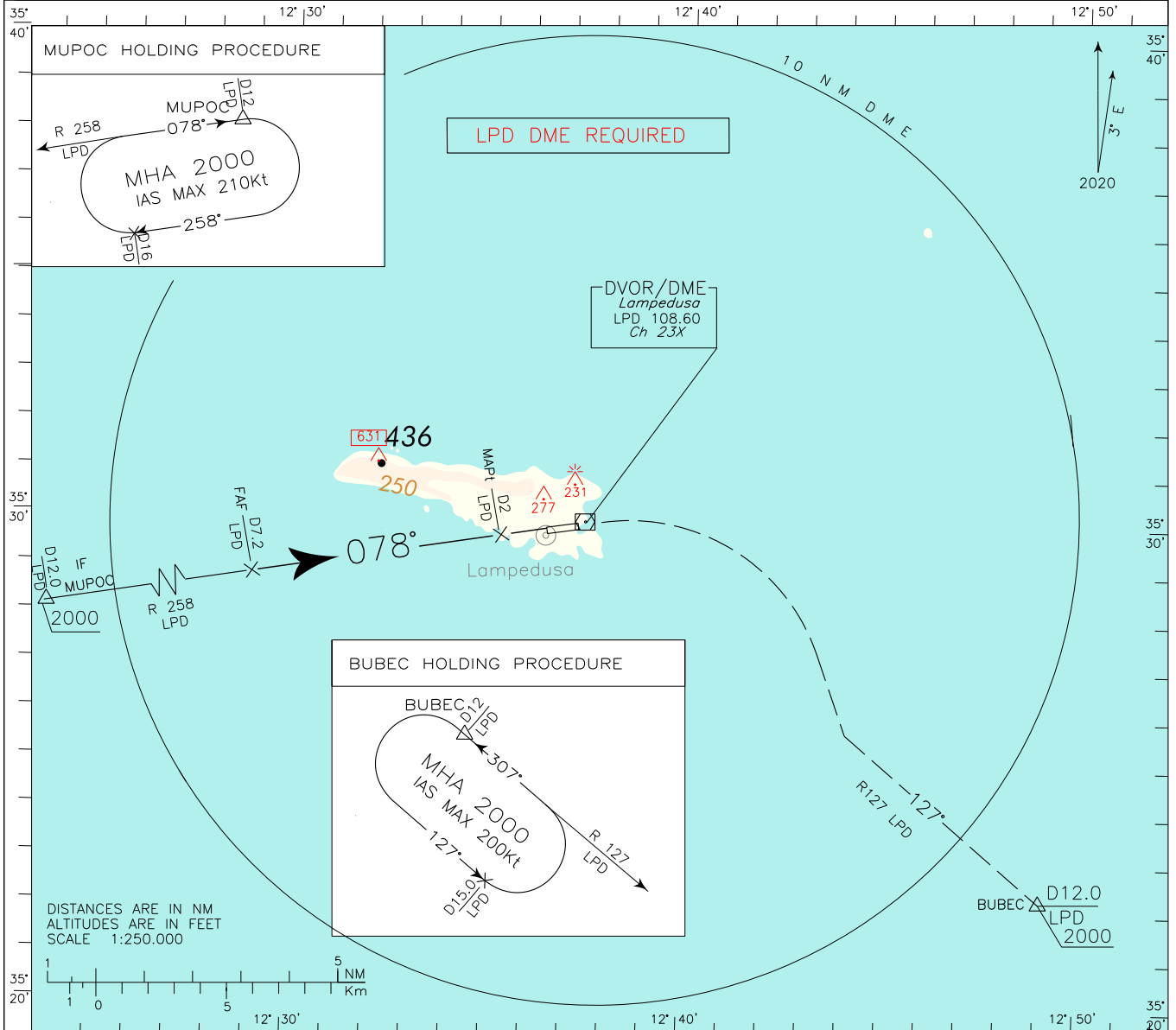
|  |        |         |
|--|--------|---------|
| AIRSPACE CLASSIFICATION See AIP ENR 1.4          | REMARK | WARNING |
| TRANSITION ALT 5000 FT                           |        |         |
| ELEV AND ALT IN FT<br>IF NOT OTHERWISE INDICATED |        |         |

ICAO – INSTRUMENT APPROACH CHART

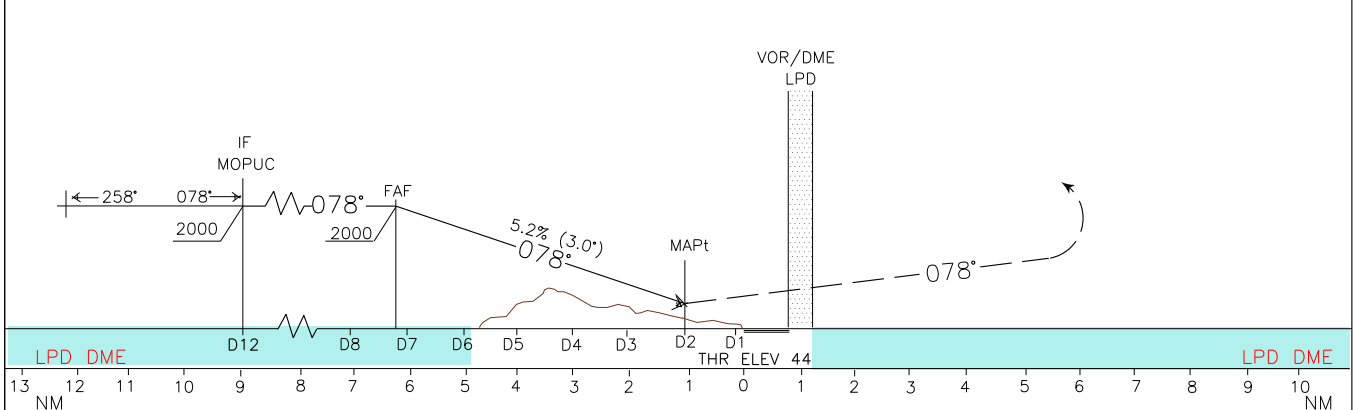
AD2 LICD 5-3

DOC. 8168 ED.7 2020 – AMDT 9

|     |               |         |         |    |                  |            |
|-----|---------------|---------|---------|----|------------------|------------|
| APP | Lampedusa APP | 118.030 | AD ELEV | 66 | L<br>I<br>C<br>D | LAMPEDUSA  |
| TWR | Lampedusa TWR | 123.500 |         |    |                  | VOR RWY 08 |



TRANSITION ALT 5000 MISSED APPROACH: On MAPt at 2 NM LPD DME climbing to 2000FT proceed on TR 078°. On LPD VOR turn right on TR 127° (R127 LPD VOR) direct to BUBEC Holding Pattern



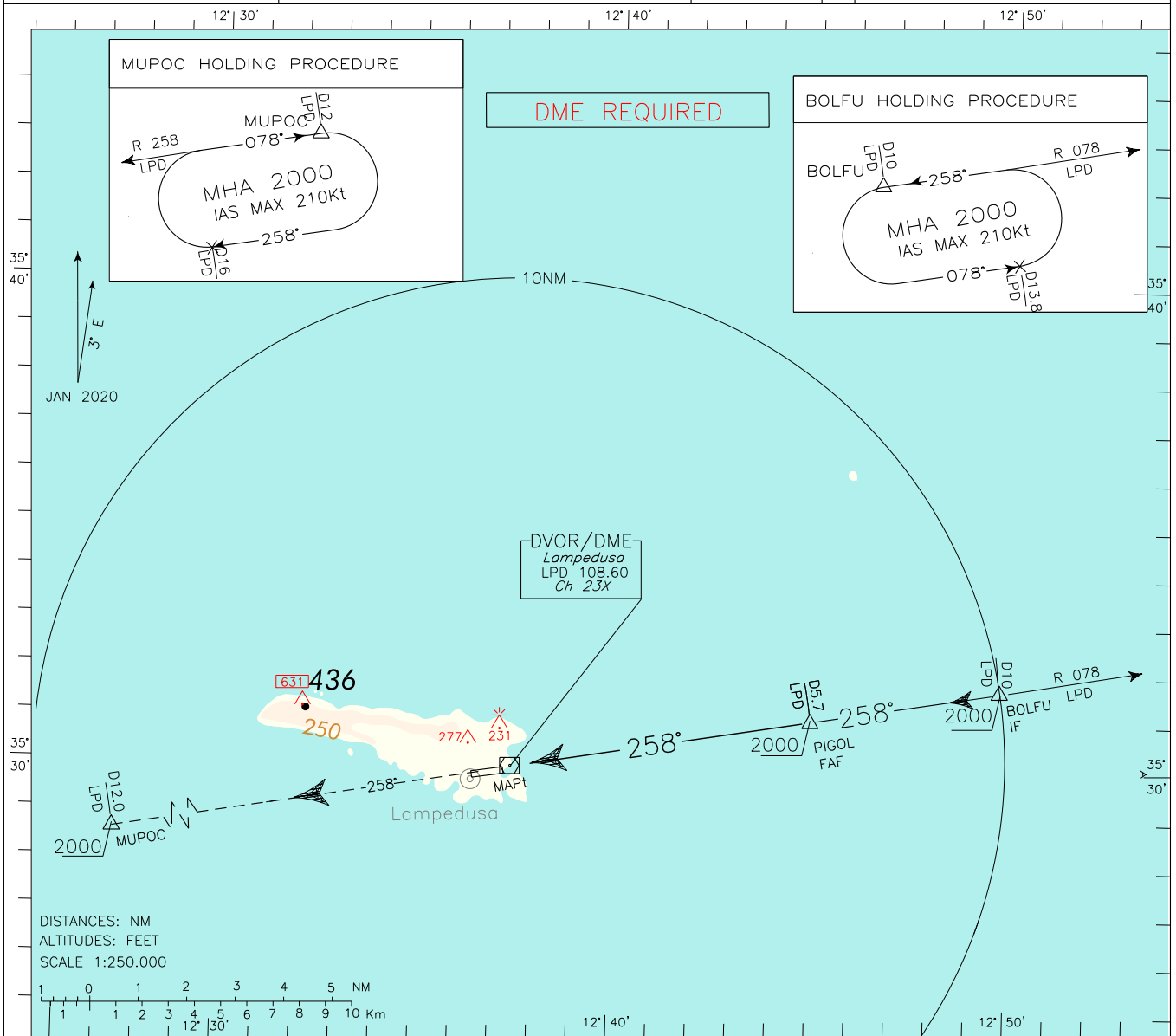
| CAT                  |           | A         | B         | C           | D           | GS  | FT PER MIN | DIST  | ALT (HGT)   | MSA 25NM LPD VOR<br>2100 |
|----------------------|-----------|-----------|-----------|-------------|-------------|-----|------------|-------|-------------|--------------------------|
| STRAIGHT IN APPROACH | OCA (OCH) | 500(456)  |           |             |             | 80  | 430        | 6 DME | 1640 (1596) |                          |
|                      |           |           |           |             |             | 100 | 530        | 5 DME | 1320 (1276) |                          |
|                      |           |           |           |             |             | 120 | 640        | 4 DME | 1000 (956)  |                          |
|                      |           |           |           |             |             | 140 | 740        | 3 DME | 690 (646)   |                          |
| CIRCLING             |           | 700 (634) | 700 (634) | 1100 (1034) | 1100 (1034) | 160 | 850        | 2 DME | 370 (326)   |                          |

ICAO – INSTRUMENT APPROACH CHART

AD2 LICD 5-5

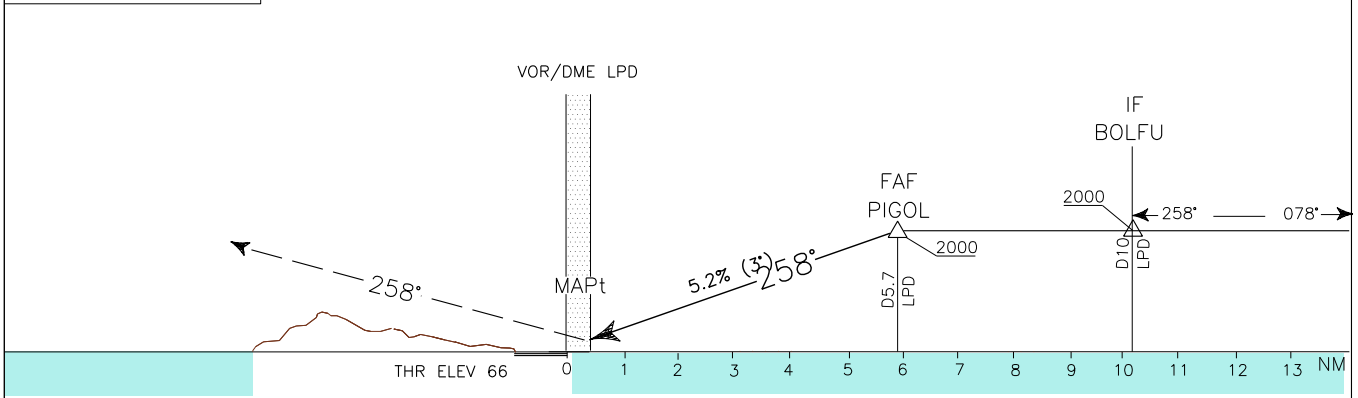
DOC. 8168 ED.7 2020 – AMDT 9

|     |               |         |         |    |                  |           |
|-----|---------------|---------|---------|----|------------------|-----------|
| APP | Lampedusa APP | 118.030 | AD ELEV | 66 | L<br>I<br>C<br>D | LAMPEDUSA |
| TWR | Lampedusa TWR | 123.500 |         |    | VOR              | RWY 26    |



CHANGE: REVISED PROCEDURE

TRANSITION ALT 5000 MISSED APPROACH: Climb straight ahead on RDL 258 LPD VOR to 2000 ft direct to MUPOC Holding pattern.



| CAT                  | A        | B        | C          | D          | RECOMMENDED PROFILE      |            |       |             | MSA 25NM LPD VOR |
|----------------------|----------|----------|------------|------------|--------------------------|------------|-------|-------------|------------------|
|                      |          |          |            |            | GS                       | FT PER MIN | DIST  | ALT (HGT)   |                  |
| STRAIGHT IN APPROACH | 500(434) |          |            |            | Gradient 5.2% (320FT/NM) |            |       |             | 2100             |
|                      |          |          |            |            | 80                       | 430        | 5 DME | 1770 (1704) |                  |
|                      |          |          |            |            | 100                      | 530        | 4 DME | 1450 (1384) |                  |
|                      |          |          |            |            | 120                      | 640        | 3 DME | 1130 (1064) |                  |
| CIRCLING             | 700(634) | 700(634) | 1100(1034) | 1100(1034) | 140                      | 740        | 2 DME | 810 (744)   |                  |
|                      |          |          |            |            | 160                      | 850        | 1 DME | 490 (424)   |                  |

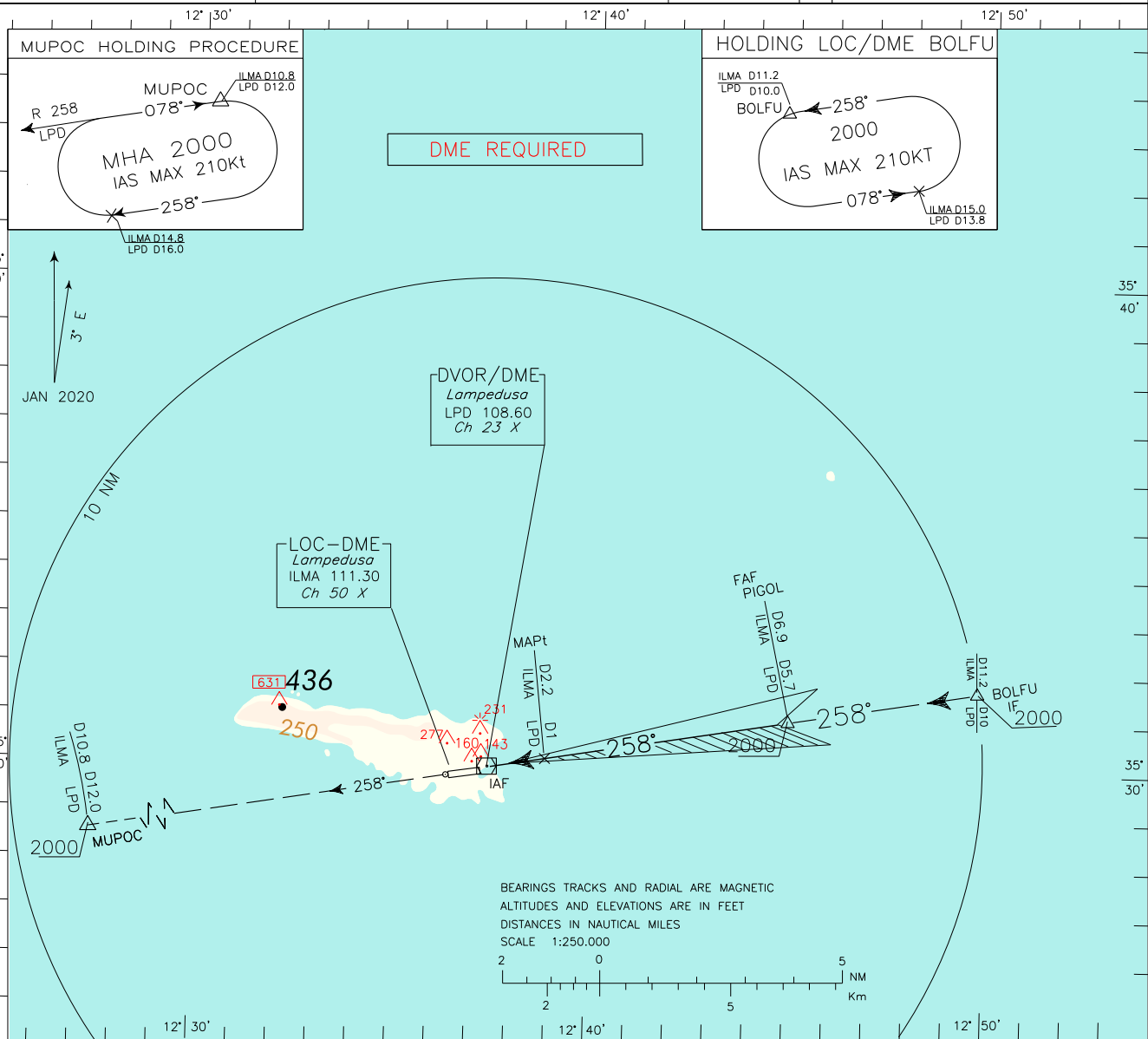
ICAO - INSTRUMENT APPROACH CHART

AD2 LICD 5-7

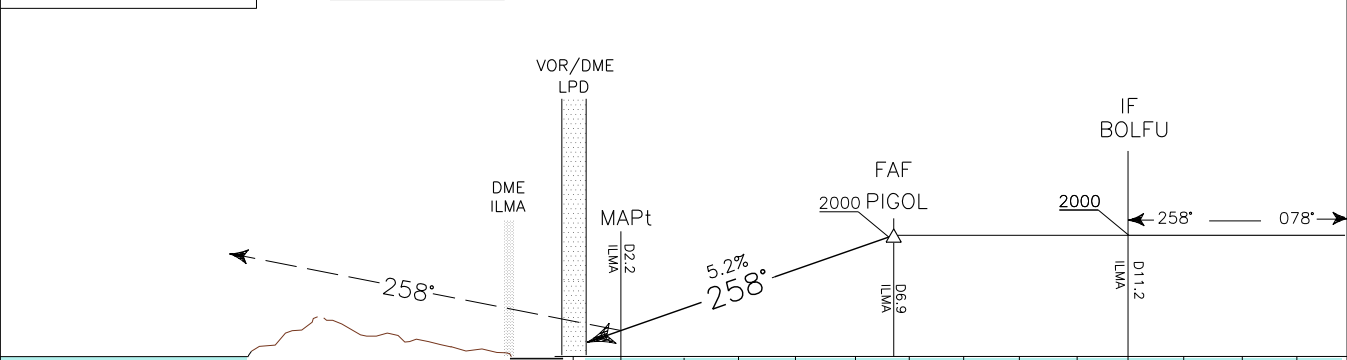
DOC. 8168 ED.7 2020 - AMDT 9

CHANGE: REVISED PROCEDURE

|     |               |         |         |   |           |
|-----|---------------|---------|---------|---|-----------|
| APP | Lampedusa APP | 118.030 | AD ELEV | L | LAMPEDUSA |
| TWR | Lampedusa TWR | 123.500 | 66      | C | LOC       |
|     |               |         |         | D | RWY 26    |



TRANSITION ALT 5000 MISSED APPROACH: Proceed on TR 258° climbing to 2000 ft direct to MUPOC Holding Pattern.



|          |   |   |   |   |   |   |   |   |   |   |    |    |    |    |          |
|----------|---|---|---|---|---|---|---|---|---|---|----|----|----|----|----------|
| LPD DME  | 0 | 1 | 2 | 3 | 4 | 5 | 6 | 7 | 8 | 9 | 10 | 11 | 12 | 13 | LPD DME  |
| ILMA DME | 0 | 1 | 2 | 3 | 4 | 5 | 6 | 7 | 8 | 9 | 10 | 11 | 12 | 13 | ILMA DME |

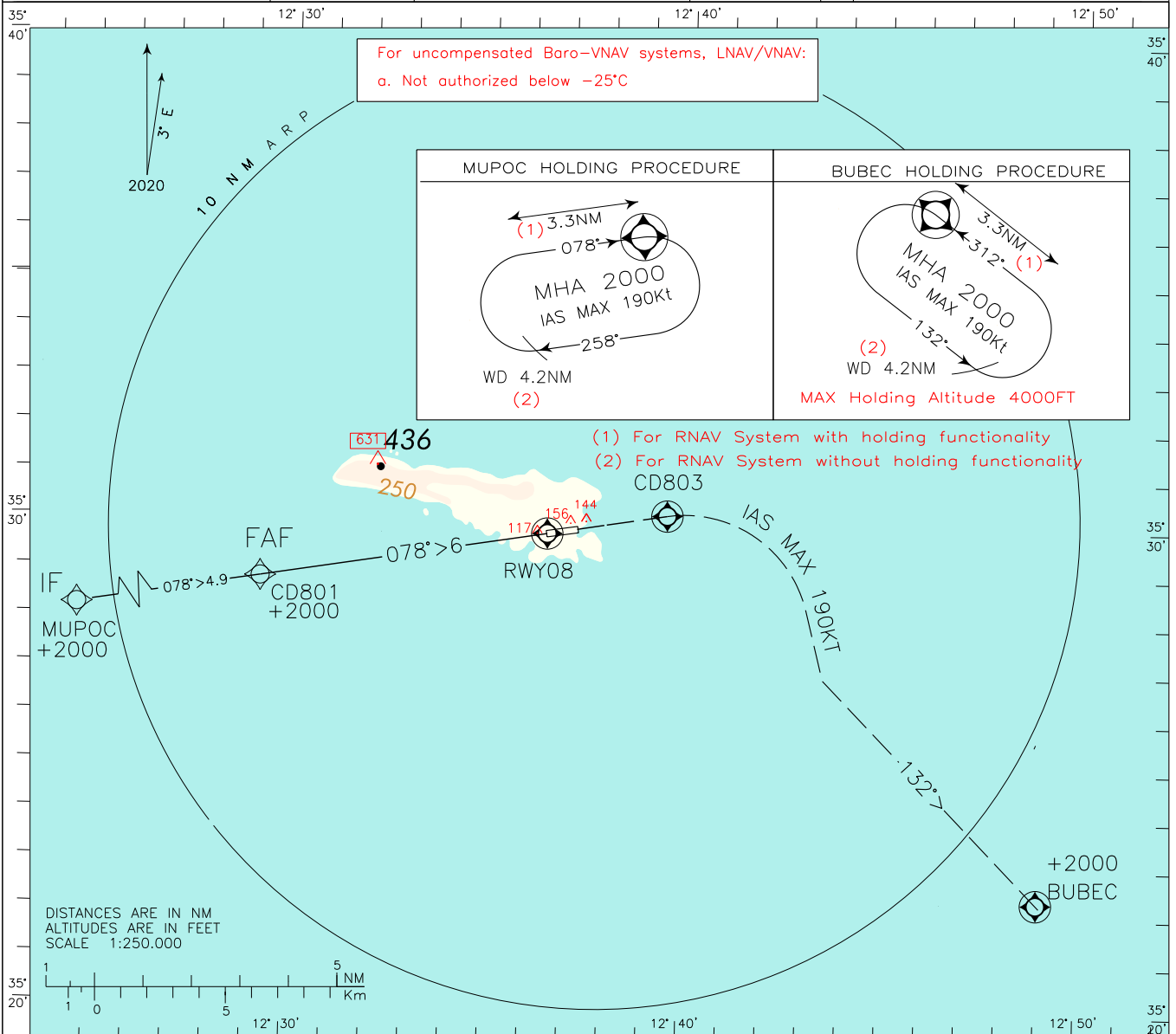
| STRAIGHT IN APPROACH | OCA (OCH) | A        | B          | C          | D | FAF-MAPt | GS     | FT PER MIN | DIST LPD | ALT (HGT)   | MSA 25NM LPD VOR |
|----------------------|-----------|----------|------------|------------|---|----------|--------|------------|----------|-------------|------------------|
|                      | LOC       | 420(354) |            |            |   |          | 4.7 NM | 80         | 430      | 5 DME       |                  |
|                      |           |          |            |            |   |          | 100    | 530        | 4 DME    | 1450 (1384) | 2100             |
|                      |           |          |            |            |   |          | 120    | 640        | 3 DME    | 1130 (1064) |                  |
|                      |           |          |            |            |   |          | 140    | 740        | 2 DME    | 810 (744)   |                  |
| CIRCLING             | 700(634)  | 700(634) | 1100(1034) | 1100(1034) |   | 1:46     | 160    | 850        | 1 DME    | 500 (434)   |                  |

ICAO – INSTRUMENT APPROACH CHART

AD2 LICD 5-9

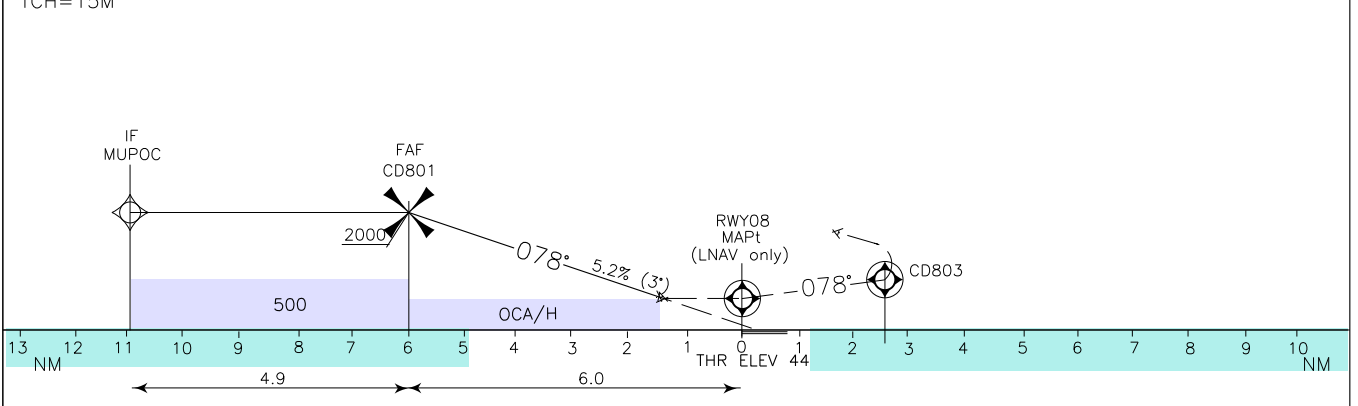
DOC. 8168 ED.7 2020 – AMDT 9

|                           |  |               |                  |                         |
|---------------------------|--|---------------|------------------|-------------------------|
| EGNOS<br>CH 52352<br>E08A | APP Lampedusa APP 118.030<br>TWR Lampedusa TWR 123.500 | AD ELEV<br>66 | L<br>I<br>C<br>D | LAMPEDUSA<br>RNP RWY 08 |
|---------------------------|--|---------------|------------------|-------------------------|



TRANSITION ALT 5000 MISSED APPROACH: Continue RWY heading climbing to 2000Ft. Over CD803 turn Right (IAS MAX 190Kts) track 132° bound to BUBEC Holding Pattern

TCH=15M



| OCA (OCH)            |           | A         | B         | C           | D           | GS  | FT PER MIN | DIST | ALT (HGT)   | MNM SECT ALT<br>LICD<br>ARP<br><br>2100 |
|----------------------|-----------|-----------|-----------|-------------|-------------|-----|------------|------|-------------|---|
| STRAIGHT IN APPROACH | LPV       | 294(250)  |           |             |             | 80  | 430        | 6    | 2000 (1956) |   |
|                      | LNAV/VNAV | 294(250)  | 298(254)  | 306(262)    | 317(273)    | 100 | 530        | 5    | 1690 (1646) |   |
|                      | LNAV      | 410(366)  |           |             |             | 120 | 637        | 4    | 1370 (1326) |   |
| CIRCLING             |           | 700 (634) | 700 (634) | 1100 (1034) | 1100 (1034) | 140 | 740        | 3    | 1060 (1016) |   |
|                      |           |           |           |             |             | 160 | 850        | 2    | 740 (696)   |   |

## TABULAR DESCRIPTION

## RNP RWY 08

| Serial Number | Path Terminator | Waypoint Identifier | Fly Over | Course °M(°T) | Magnetic Variation | Distance (NM) | Turn Direction | Altitude (ft) | Speed Limit (kt)/Bank Angle | VPA/TCH | Navigation Specification |
|---------------|-----------------|---------------------|----------|---------------|--------------------|---------------|----------------|---------------|-----------------------------|---------|--------------------------|
| 010           | IF              | MUPOC               | -        | -             | -                  | -             | -              | +2000         | 190                         | -       | RNP APCH                 |
| 020           | TF              | CD801               | -        | 078° (080.6°) | -                  | 4.9           | -              | +2000         | -                           | -       | RNP APCH                 |
| 030           | TF              | RWY08               | Y        | 078° (080.6°) | -                  | 6             | -              | @93 (3)       | -                           | 3°/50Ft | RNP APCH                 |
| 040           | CF              | CD803               | Y        | 078° 0(80.6°) | 3°                 | 2.5           | -              | -             | -                           | -       | RNP APCH                 |
| 050           | CF              | BUBEC               | -        | 132° (135.4°) | 3°                 | -             | -              | +2000         | 190                         | -       | RNP APCH                 |
| 060           | HM              | BUBEC               | Y        | 312° (315.4°) | 3°                 | -             | L              | +2000         | 190                         | -       | RNAV1                    |

| Path Terminator | Waypoint Identifier | Inbound Course °M (°T) | Leg Distance (NM) (1) | Timing(min.)/<br>Waypoint Distance (NM) (2) | Turn Direction | Minimum Altitude (FT) | Maximum Altitude (FL) | Speed Limit (kt) | Magnetic Variation (°) | Navigation Specification |
|-----------------|---------------------|------------------------|-----------------------|---|----------------|-----------------------|-----------------------|------------------|------------------------|--------------------------|
| HM              | MUPOC               | 078° (080.6°)          | 3.3                   | -/4.5                                       | R              | +2000                 | -                     | 190              | +3.0                   | RNAV1                    |
| HM              | BUBEC               | 312° (315.4°)          | 3.3                   | -/4.2                                       | L              | +2000                 | -                     | 190              | +3.0                   | RNAV1                    |

(1) RNAV system with holding functionality

(2) RNAV system without holding functionality

(3) THR Altitude plus TCH

## WAYPOINT LIST RNP RWY08

| Waypoint Identifier | Coordinates                    |
|---------------------|--------------------------------|
| CD801               | 35°28'49.03"N – 012°29'16.50"E |
| CD803               | 35°30'12.43"N – 012°39'31.18"E |

## SBAS FAS DATA BLOCK LICD RNP RWY 08

## Input data

|                                     |               |
|-------------------------------------|---------------|
| Operation Type                      | 0             |
| SBAS Provider                       | 1 (EGNOS)     |
| Airport Identifier                  | LICD          |
| Runway                              | 08            |
| Runway Letter                       | 0 (None)      |
| Approach Performance Designator     | 0             |
| Route Indicator                     |               |
| Reference Path Data Selector        | 0             |
| Reference Path Identifier           | E08A          |
| LTP/FTP Latitude                    | 352947.9400N  |
| LTP/FTP Longitude                   | 0123629.9300E |
| LTP/FTP Ellipsoidal Height (metres) | 51.4          |
| FPAP Latitude                       | 352957.4200N  |
| Delta FPAP Latitude (seconds)       | 9.4800        |
| FPAP Longitude                      | 0123740.1900E |
| Delta FPAP Longitude (seconds)      | 70.2600       |
| Threshold Crossing Height           | 15.0          |
| TCH Units Selector                  | 1 (meters)    |
| Glidepath Angle (degrees)           | 3.00          |
| Course Width (metres)               | 105.00        |
| Length Offset (metres)              | 0             |
| HAL (metres)                        | 40.0          |
| VAL (metres)                        | 35.0          |

## Output data

|                      |  |
|----------------------|--|
| Data Block           | 10 04 03 09 0C 08 00 00 01 38<br>30 05 48 C7 3B 0F D4 30 69 05<br>02 16 10 4A 00 E8 24 02 2C 81<br>2C 01 64 00 C8 AF 9F 9F ED 15 |
| Calculated CRC Value | 9F9FED15   |

## Required Additional Data

|                                     |      |
|-------------------------------------|------|
| ICAO Code                           | LI   |
| LTP/FTP Orthometric Height (metres) | 13.4 |

Intenzionalmente bianca

*Intentionally left blank*



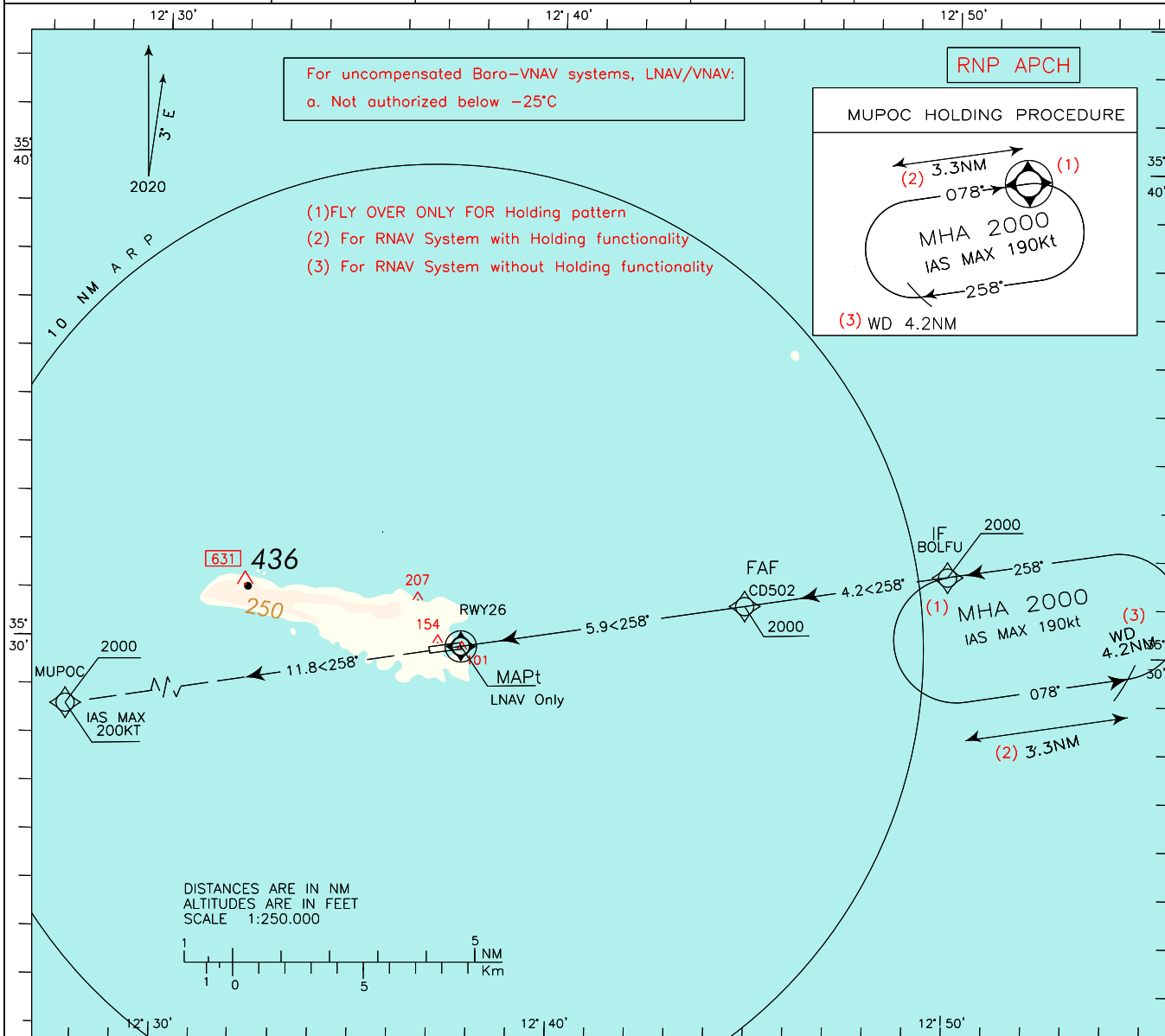
ICAO – INSTRUMENT APPROACH CHART

AD2 LICD 5-13

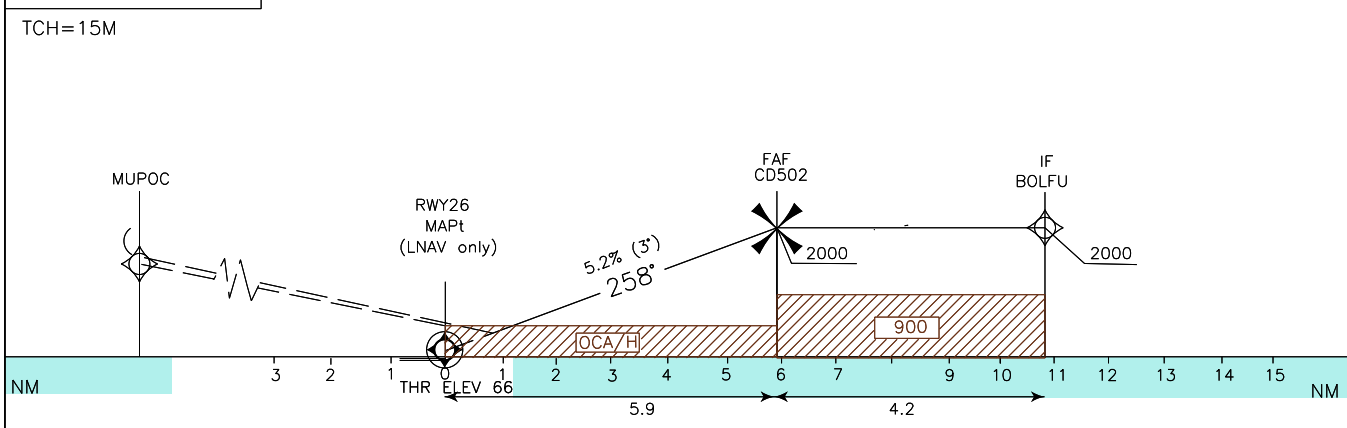
DOC. 8168 ED.7 2020 – AMDT 9

CHANGE: REPRINTING

|                           |  |               |                  |                         |
|---------------------------|--|---------------|------------------|-------------------------|
| EGNOS<br>CH 42125<br>E26A | APP Lampedusa APP 118.030<br>TWR Lampedusa TWR 123.500 | AD ELEV<br>66 | L<br>I<br>C<br>D | LAMPEDUSA<br>RNP RWY 26 |
|---------------------------|--|---------------|------------------|-------------------------|



TRANSITION ALT 5000 MISSED APPROACH: Continue on course 258° climbing to 2000ft direct to MUPOC Holding Pattern



| STRAIGHT IN APPROACH | OCA (OCH) |           |             |             | GS  | FT PER MIN | DIST | ALT (HGT)   | MNM SECT ALT<br>LICD | ALT<br>ARP |
|----------------------|-----------|-----------|-------------|-------------|-----|------------|------|-------------|----------------------|------------|
|                      | A         | B         | C           | D           |     |            |      |             |                      |            |
| LPV                  | 316(250)  | 316(250)  | 316(250)    | 320(254)    | 80  | 425        | 5.9  | 2000 (1934) | 2100                 |            |
|                      | LNAV/VNAV | 340(274)  | 350(284)    | 360(294)    | 100 | 530        | 5    | 1710 (1644) |                      |            |
|                      | LNAV      | 400(334)  |             |             |     | 120        | 640  | 4           |                      |            |
| CIRCLING             | 700 (634) | 700 (634) | 1100 (1034) | 1100 (1034) | 140 | 745        | 3    | 1070 (1004) |                      |            |
|                      |           |           |             |             | 160 | 850        | 2    | 755 (689)   |                      |            |

## TABULAR DESCRIPTION

## RNP RWY 26

| Serial Number | Path Terminator | Waypoint Identifier | Fly Over | Course °M(°T) | Magnetic Variation | Distance (NM) | Turn Direction | Altitude (ft) | Speed Limit (kt) | VPA/TCH | Navigation Specification |
|---------------|-----------------|---------------------|----------|---------------|--------------------|---------------|----------------|---------------|------------------|---------|--------------------------|
| 010           | IF              | BOLFU               | -        | -             | -                  | -             | -              | +2000         | 190              | -       | RNP APCH                 |
| 020           | TF              | CD502               | -        | 258° (260.7°) | -                  | 4.2           | -              | +2000         | -                | -       | RNP APCH                 |
| 030           | TF              | RWY26               | Y        | 258° (260.6°) | -                  | 5.9           | -              | @116 (3)      | -                | 3°/50Ft | RNP APCH                 |
| 040           | CF              | MUPOC               | -        | 258° (260.6°) | -                  | 11.8          | -              | -             | -                | -       | RNP APCH                 |
| 050           | HM              | MUPOC               | Y        | 168° (170.7°) | 3°                 | -             | R              | +2000         | 190              | -       | RNAV1                    |

| Path Terminator | Waypoint Identifier | Inbound Course °M (°T) | Leg Distance (NM) (1) | Timing(min./) Waypoint Distance (NM) (2) | Turn Direction | Minimum Altitude (FT) | Maximum Altitude (FL) | Speed Limit (kt) | Magnetic Variation (°) | Navigation Specification |
|-----------------|---------------------|------------------------|-----------------------|--|----------------|-----------------------|-----------------------|------------------|------------------------|--------------------------|
| HM              | BOLFU               | 258° (260.7°)          | 3.3                   | 1/4.2                                    | L              | +2000                 | -                     | 190              | +3.0                   | RNAV1                    |
| HM              | MUPOC               | 078° (080.5°)          | 3.3                   | -/4.2                                    | R              | +2000                 | -                     | 190              | +3.0                   | RNAV1                    |

(1) RNAV system with holding functionality

(2) RNAV system without holding functionality

(3) THR Altitude plus TCH

## WAYPOINT LIST RNP RWY26

| Waypoint Identifier | Coordinates                  |
|---------------------|------------------------------|
| CD502               | 35°30'55.10"N 012°44'49.34"E |

## SBAS FAS DATA BLOCK LICD RNP RWY 26

| PARAMETERS                          | VALUES        |
|-------------------------------------|---------------|
| Operation Type                      | 0             |
| SBAS Provider                       | 1 (EGNOS)     |
| Airport Identifier                  | LICD          |
| Runway                              | 26            |
| Runway Letter                       | 0 (None)      |
| Approach Performance Designator     | 0             |
| Route Indicator                     |               |
| Reference Path Data Selector        | 0             |
| Reference Path Identifier           | E26A          |
| LTP/FTP Latitude                    | 352957.4210N  |
| LTP/FTP Longitude                   | 0123740.1935E |
| LTP/FTP Ellipsoidal Height (metres) | 58.3          |
| FPAP Latitude                       | 352947.9355N  |
| Delta FPAP Latitude (seconds)       | -9.4855       |
| FPAP Longitude                      | 0123629.9310E |
| Delta FPAP Longitude (seconds)      | -70.2625      |
| Threshold Crossing Height           | 50.0          |
| TCH Units Selector                  | 0 (feet)      |
| Glidepath Angle (degrees)           | 3.00          |
| Course Width (metres)               | 105.00        |
| Length Offset (metres)              | 0             |
| HAL (metres)                        | 40.0          |
| VAL (metres)                        | 35.0          |

| OUTPUT DATA          |   |
|----------------------|---|
| Data Block           | 10 04 03 09 0C 1A 00 00<br>01 36 32 05 5A 11 3C 0F<br>C3 55 6B 05 47 16 E5 B5<br>FF 13 DB FD F4 01 2C 01<br>64 00 C8 AF 09 AF C1 60 |
| Calculated CRC Value | 09AFC160  |

## Required Additional Data (not CRC wrapped)

| Parameters                          | Values |
|-------------------------------------|--------|
| ICAO Code                           | LI     |
| LTP/FTP Orthometric Height (metres) | 20.2   |

Intenzionalmente bianca

*Intentionally left blank*