

NEW CHART

**EMCOL 1D**

EMCOL – then turn left until joining arc 17.0NM LPD DME, crossing RDL 070LPD VOR turn right on TR 258° (RDL 078 LPD VOR) bound to BOLFU.

MEA/MEL: EMCOL (MCL 65) ; EMCOL – BOLFU: 2000 FT

**LUZOT 1D**

LUZOT – turn left on TR 213°; at 16.5 NM LPD DME turn right until joining RDL 078 LPD VOR (TR258°) bound to BOLFU.

MEA/MEL: LUZOT(MCL 65) ; LUZOT –BOLFU: 2000 FT

**LICDE 1B**

LICDE – TR 155° (RDL 335 LPD VOR) until 18 NM LPD DME, then turn right until joining ARC16 NM LPD DME; crossing RDL 265 LPD VOR turn left on TR 078° (RDL 258 LPD VOR) bound to MUPOC.

MEA/MEL: LICDE(MCL 65) ; LICDE – MUPOC: 2000 FT

**LUZOT 1B**

LUZOT – TR 244° (RDL 064LPD VOR) direct to LPD VOR then proceed on tr 297° (RDL 297 LPD VOR), at 14NM LPD DME turn left until joining ARC16 NM LPD DME; crossing RDL 265 LPD VOR turn left on TR 078° (RDL 258 LPD VOR) bound to MUPOC.

MEA/MEL: LUZOT (MCL 65) ; LUZOT - RDL 297/6 LPD VOR/DME:4000FT; RDL 297/6 LPD VOR/DME – MUPOC: 2000 FT

Intenzionalmente bianca

*Intentionally left blank*

# STARs RNP1

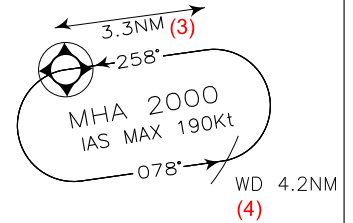
## LAMPEDUSA

TRANSITION ALT 5000

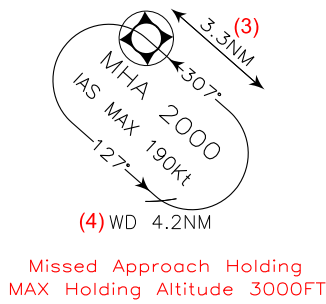
### FREQUENCIES

APP Lampedusa APP	118.030
TWR Lampedusa TWR	123.500

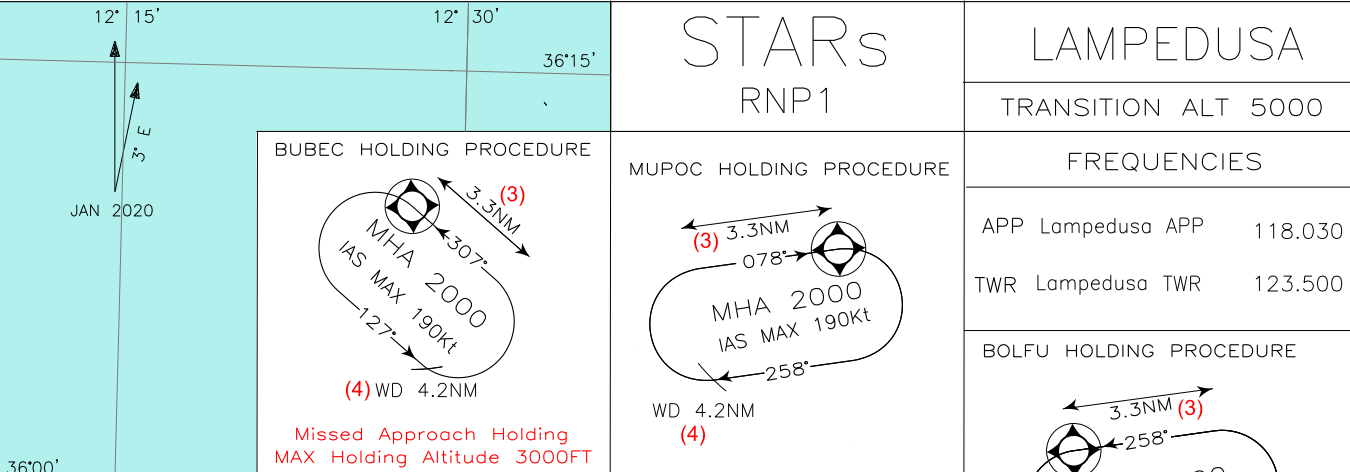
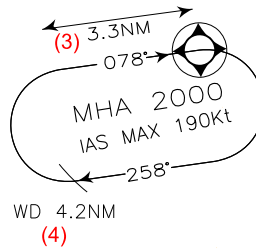
### BOLFU HOLDING PROCEDURE



### BUBEC HOLDING PROCEDURE



### MUPOC HOLDING PROCEDURE



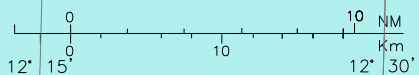
**REMARK 6:** For further details on the ARRIVAL TRANSITION ROUTES VIA DOBIX / KOLEX / NIBLO / TOVMA connecting LICDE / EMCOL STARs refer to Malta AIP sections ENR 3.5 and ENR 6

NEW CHART

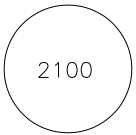


**REMARK:**  
 (1) MEA 2000 for STAR BUBEC 1A  
 (2) MAXIMUM ALTITUDE 4000FT AMSL for EMCOL 1C only  
 (3) For RNAV System with holding functionality  
 (4) For RNAV System without holding functionality  
 (5) or TRL if higher

DISTANCES: NM  
 ALTITUDES, ELEVATIONS AND HEIGHTS: FEET  
 SCALE 1:500.000



MNM SECT ALT  
25NM ARP



**LAMPEDUSA**  
**STAR RNP1 RWY 08**

**LICDE 1A**

Path Terminator	Waypoint Identifier	Fly Over	Course °M(°T)	Magnetic Variation	Distance (NM)	Turn Direction	Altitude (ft)	Speed Limit (kt)	Navigation Specification
IF	LICDE	-	-	-	-	-	+6500 (*)	-250	RNP 1
TF	CD303	-	213 (216.3)		17.9		+3000	-210	RNP 1
TF	CD304	-	168 (170.4)		6.0		+2000	-200	RNP 1
TF	MUPOC	-	078 (080.4)		5.0		+2000	-200	RNP 1

(\*) +FL65 or TRNSITION LEVEL if higher

**LUZOT 1A**

Path Terminator	Waypoint Identifier	Fly Over	Course °M(°T)	Magnetic Variation	Distance (NM)	Turn Direction	Altitude (ft)	Speed Limit (kt)	Navigation Specification
IF	LUZOT	-	-	-	-	-	+6500 (*)	-250	RNP 1
TF	BUBEC	-	212 (214.8)	-	20.1	-	+4000	-250	RNP 1
TF	CD313	-	258 (260.7)	-	24.8	-	+4000	-210	RNP 1
TF	CD304	-	348 (350.4)	-	9.1	-	+2000	-200	RNP 1
TF	MUPOC	-	078 (080.4)	-	5.0	-	+2000	-200	RNP 1

(\*) +FL65 or TRNSITION LEVEL if higher

**BUBEC 1A (Following Missed Approach RWY08)**

Path Terminator	Waypoint Identifier	Fly Over	Course °M(°T)	Magnetic Variation	Distance (NM)	Turn Direction	Altitude (ft)	Speed Limit (kt)	Navigation Specification
IF	BUBEC	-	-	-	-	-	+2000	-250	RNP 1
TF	CD313	-	258 (260.7)	-	24.8	-	+2000	-210	RNP 1
TF	CD304	-	348 (350.4)	-	9.1	-	+2000	-200	RNP 1
TF	MUPOC	-	078 (080.4)	-	5.0	-	+2000	-200	RNP 1

**STAR RNP1 RWY 26**

**EMCOL 1C**

Path Terminator	Waypoint Identifier	Fly Over	Course °M(°T)	Magnetic Variation	Distance (NM)	Turn Direction	Altitude (ft)	Speed Limit (kt)	Navigation Specification
IF	EMCOL	-	-	-	-	-	+6500 (*)	-250	RNP 1
TF	CD323	-	144 (147.0)	-	14.4	-	-4000/+2000	-210	RNP 1
TF	CD324	-	168 (170.8)	-	5.0	-	-4000/+2000	-200	RNP 1
TF	BOLFU	-	258 (260.8)	-	2.1	-	-4000/+2000	-200	RNP 1

(\*) +FL65 or TRNSITION LEVEL if higher

**LUZOT 1C**

Path Terminator	Waypoint Identifier	Fly Over	Course °M(°T)	Magnetic Variation	Distance (NM)	Turn Direction	Altitude (ft)	Speed Limit (kt)	Navigation Specification
IF	LUZOT	N	-	-	-	-	+6500 (*)	-250	RNP 1
TF	CD324	N	229 (231.9)	-	11.0	-	+2000	-200	RNP 1
TF	BOLFU	N	258 (260.8)	-	2.1	-	+2000	-200	RNP 1

(\*) +FL65 or TRNSITION LEVEL if higher

**LPD 1C**

Path Terminator	Waypoint Identifier	Fly Over	Course °M(°T)	Magnetic Variation	Distance (NM)	Turn Direction	Altitude (ft)	Speed Limit (kt)	Navigation Specification
IF	LPD	N	-	-	-	-	+6500 (*)	-250	RNP 1
TF	CD331	N	043 (045.5)	-	8.7	-	+2000	-230	RNP 1
TF	CD323	N	078 (080.7)	-	5.0	-	+2000	-210	RNP 1
TF	CD324	N	168 (170.8)	-	5.0	-	+2000	-200	RNP 1
TF	BOLFU	N	258 (260.8)	-	2.1	-	+2000	-200	RNP 1

(\*) +FL65 or TRNSITION LEVEL if higher

**HOLDING RNAV1**

Path Terminator	Waypoint Identifier	Inbound Course °M (°T)	Leg Distance (NM) (1)	Timing(min.)/ Waypoint Distance (NM) (2)	Turn Direction	Minimum Altitude (FT)	Maximum Altitude (FL)	Speed Limit (kt)	Magnetic Variation (°)	Navigation Specification
HM	MUPOC	078 (080.4)	3.3	-/4.2	R	+2000	-	190	+3.0	RNAV1
HM	BOLFU	258 (260.8)	3.3	- / 4.2	L	+2000	-	190	+3.0	RNAV1
HM	BUBEC	307 (310.1)	3.3	-/4.2	L	+2000 (3)	-	190	+3.0	RNAV1

(1) RNAV system with holding functionality

(2) RNAV system without holding functionality

(3) Maximum Holding altitude 3000Ft

**WAYPOINT LIST**

Waypoint Identifier	Coordinates
CD303	35° 33' 06.13"N 012° 16' 08.33"E
CD304	35° 27' 10.75"N 012° 17' 21.81"E
CD313	35° 18' 11.40"N 012° 19' 12.93"E
CD323	35° 36' 52.89"N 012° 51' 29.65"E
CD324	35° 31' 56.34"N 012° 52' 28.65"E
CD331	35° 36' 04.51"N 012° 45' 26.57"E