

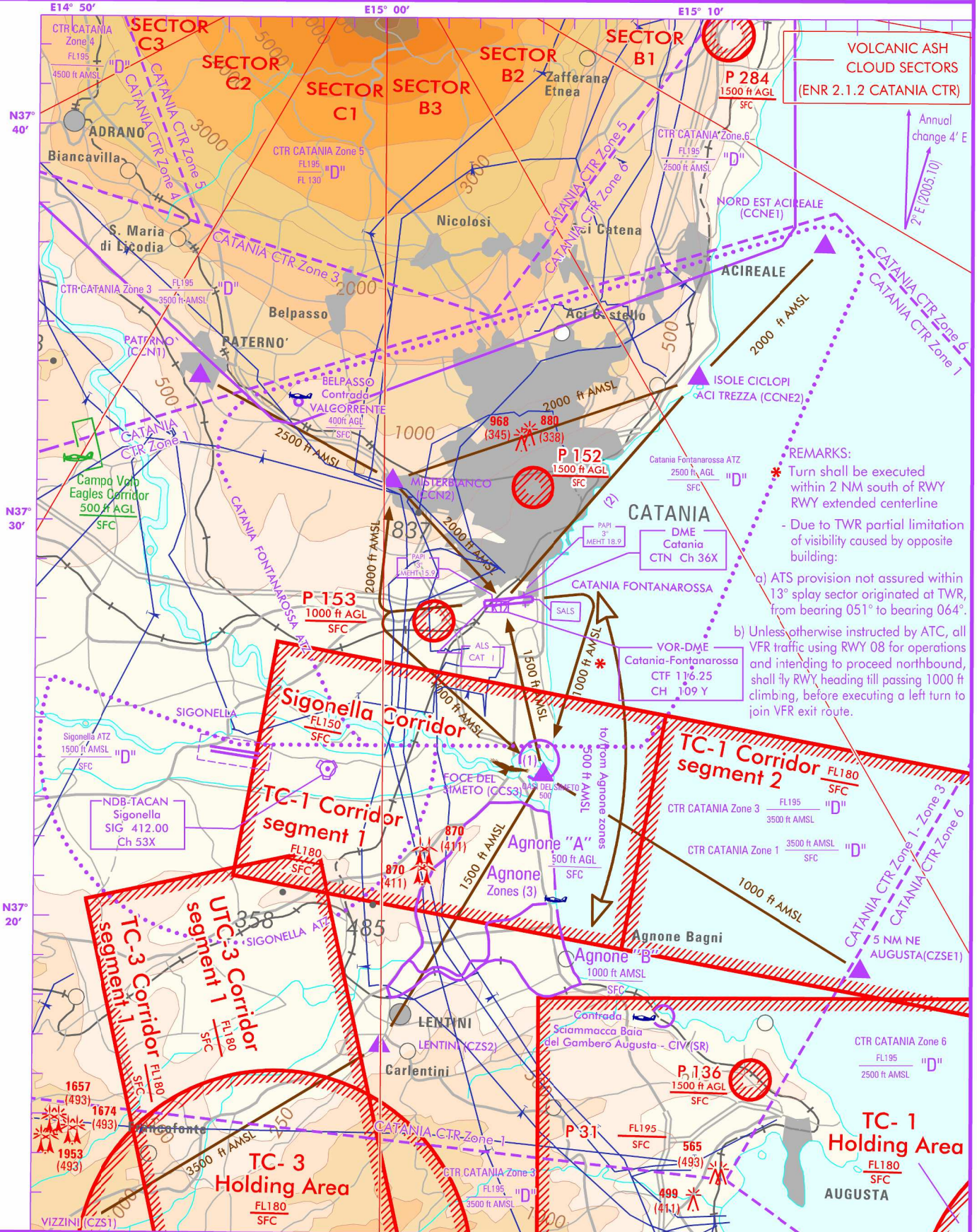
FIS	Roma Info	128.800	129.575
APP	Catania Approach	119.250	
	Catania Tower	118.700	
TWR	Catania Ground	129.725	

AD ELEV
39

L
I
C
C

CATANIA / FONTANAROSSA

CHANGE: "NDB CTF" COMPLETELY WITHDRAWN



VOLCANIC ASH CLOUD SECTORS
(ENR 2.1.2 CATANIA CTR)

REMARKS:

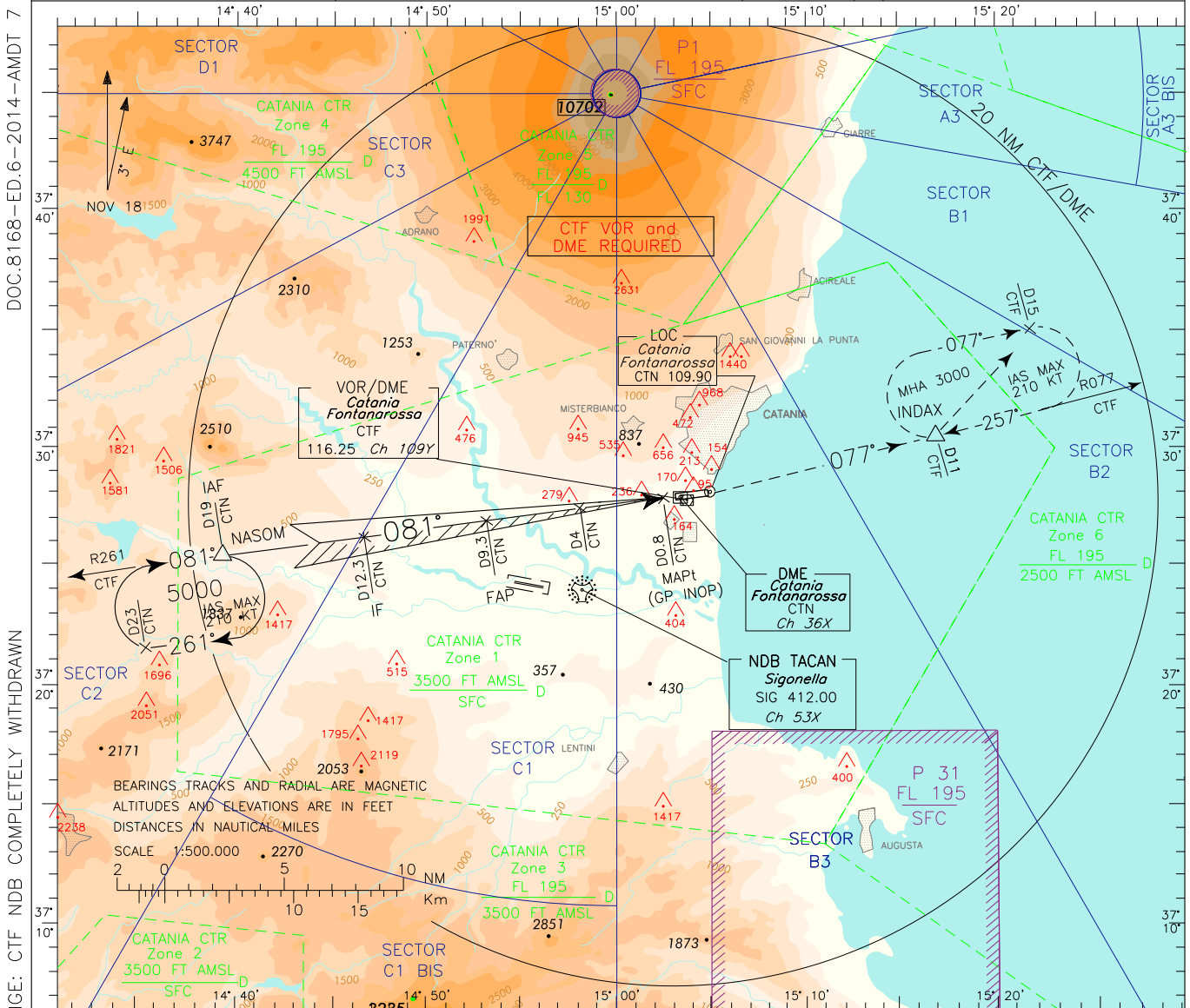
- * Turn shall be executed within 2 NM south of RWY RWY extended centerline
- Due to TWR partial limitation of visibility caused by opposite building:
- a) ATS provision not assured within 13° splay sector originated at TWR, from bearing 051° to bearing 064°.
- b) Unless otherwise instructed by ATC, all VFR traffic using RWY 08 for operations and intending to proceed northbound, shall fly RWY heading till passing 1000 ft climbing, before executing a left turn to join VFR exit route.

AIRSPACE CLASSIFICATION (See AIP-Italia ENR 1.4)

- (1) Protected area SFC / 500 ft AGL See ENR 5.6.1.15-1
- (2) VFR ROUTE Isole Ciclopi Acitrezza - Catania AD shall be flown at 2000 ft AMSL only. If unable TFC will be rerouted via Misterbianco.
- (3) Aerial work areas (See AIP-Italia ENR 5.5.3.3-1)

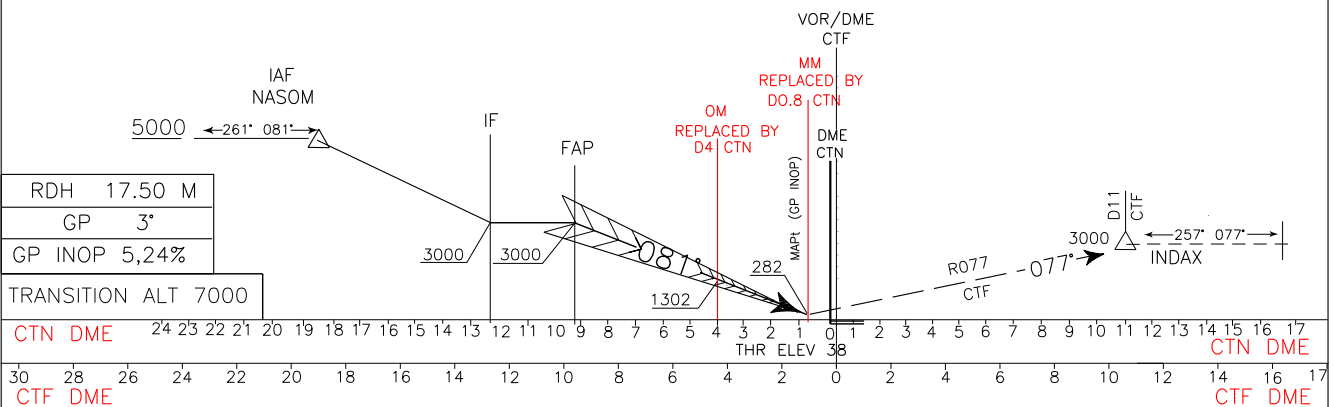
TRANSITION ALT 7000 ft
Bearings are magnetic.
ELEV and ALT in ft.

For operational limitations in case of volcanic ash cloud see AD 2 LICC 1-1 tab 23 and ENR 2.1.2 CATANIA CTR	APP	Catania APP/Radar	119.250	AD ELEV	LICC	CATANIA/FONTANAROSSA ILS or LOC-Z RWY 08
	TWR	Catania Director	(120.805)			
	ATIS	Catania TWR	118.700			
TRANSITION ALT	7000	Catania Arrival and Departure Information	127.675	39		



CHANGE: CTF NDB COMPLETELY WITHDRAWN

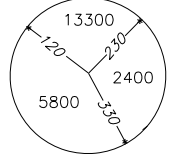
MISSED APPROACH: As soon as practicable join R077 CTF VOR/DME and climb to 3000 ft to INDAX (R077/11NM CTF VOR/DME). Minimum climb gradient 4.6%(280FT/NM) due to ATC reason. Hold between D11 and D15 CTF DME, outbound TR 077 right turn.



RDH	17.50 M									
GP	3'									
GP INOP	5,24%									
TRANSITION ALT	7000									
CTN DME	24 23 22 21 20 19 18 17 16 15 14 13 12 11 10 9 8 7 6 5 4 3 2 1 0									
CTF DME	30 28 26 24 22 20 18 16 14 12 10 8 6 4 2 0 2 4 6 8 10 12 14 16 17									
STRAIGHT IN APPROACH	ILS - Z	A	B	C	D	GS	FT PER MIN	DIST CTN	ALT(HGT)	MNM SECT ALT CTF VOR
	GP INOP	670 (640)								
CIRCLING (1)	(1)	700 (670)		790 (760)	820 (790)	120	637	4	DME	1302(1264)
						140	744	3	DME	984(946)
						160	850	2	DME	666(628)
						180	956	0.8	DME	282(244)

(1) REMARK: Circling procedure allowed South of RWY only.

NOT ALLOWED



ICAO – INSTRUMENT APPROACH CHART

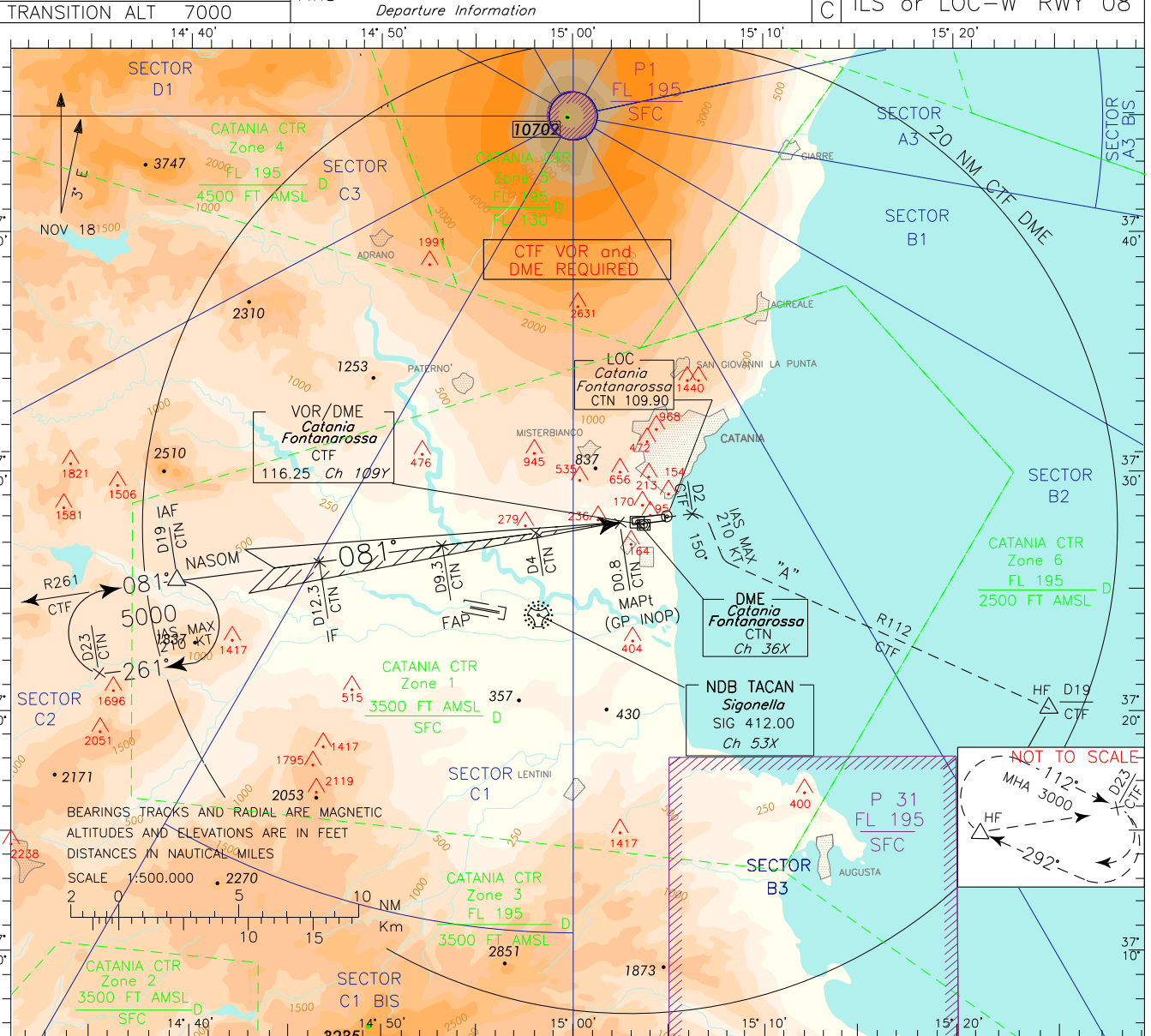
AD 2 LICC 5-5

For operational limitations in case of volcanic ash cloud see AD 2 LICC 1-1 tab 23 and ENR 2.1.2 CATANIA CTR

APP Catania APP/Radar
Catania Director 119.250
(120.805)
TWR Catania TWR 118.700
ATIS Catania Arrival and
Departure Information 127.675

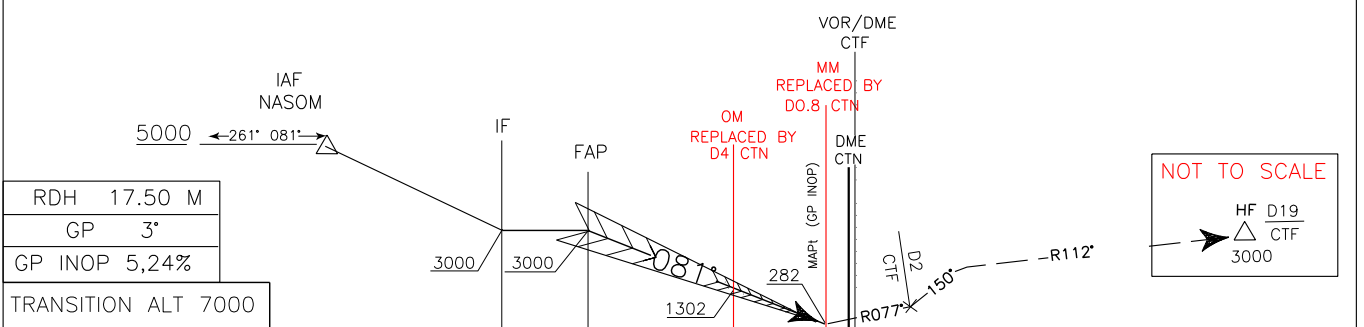
AD ELEV 39
LICC

CATANIA/FONTANAROSSA
ILS or LOC-W RWY 08



CHANGE: CTF NDB COMPLETELY WITHDRAWN

MISSED APPROACH: As soon as practicable join RDL 077 CTF and climb to 3000FT. At D2 after CTF DME turn right TR 150°(IAS MAX 210 KT) to join and follow R112 CTF VOR/DME to HF (R112/19 CTF VOR/DME) hold between D19 and D23 CTF DME, outbound TR 112, right turn.



RDH	17.50 M
GP	3°
GP INOP	5,24%
TRANSITION ALT	7000
CTN DME	24 23 22 21 20 19 18 17 16 15 14 13 12 11 10 9 8 7 6 5 4 3 2 1 0 1 2 3 4 5 6 7 8 9 10 11 12 13 14 15 16 17
CTF DME	30 28 26 24 22 20 18 16 14 12 10 8 6 4 2 0 2 4 6 8 10 12 14 16 17

OCA (OCH)	A	B	C	D	(1) REMARK: Circling procedure allowed South of RWY only. 	GS	FT PER MIN	DIST CTN	ALT(HGT)	MNM SECT ALT CTF VOR 		
STRAIGHT IN APPROACH	ILS - Z	268 (230)	278 (240)	288 (250)		298 (260)	100	531	5		DME	1620(1582)
	GP INOP	670 (640)				120	637	4	DME		1302(1264)	
CIRCLING (1)		700 (670)	790 (760)	820 (790)			140	744	3		DME	984(946)
						160	850	2	DME	666(628)		
						180	956	0.8	DME	282(244)		

For operational limitations in case of volcanic ash cloud see AD 2 LICC 1-1 tab 23 and ENR 2.1.2 CATANIA CTR

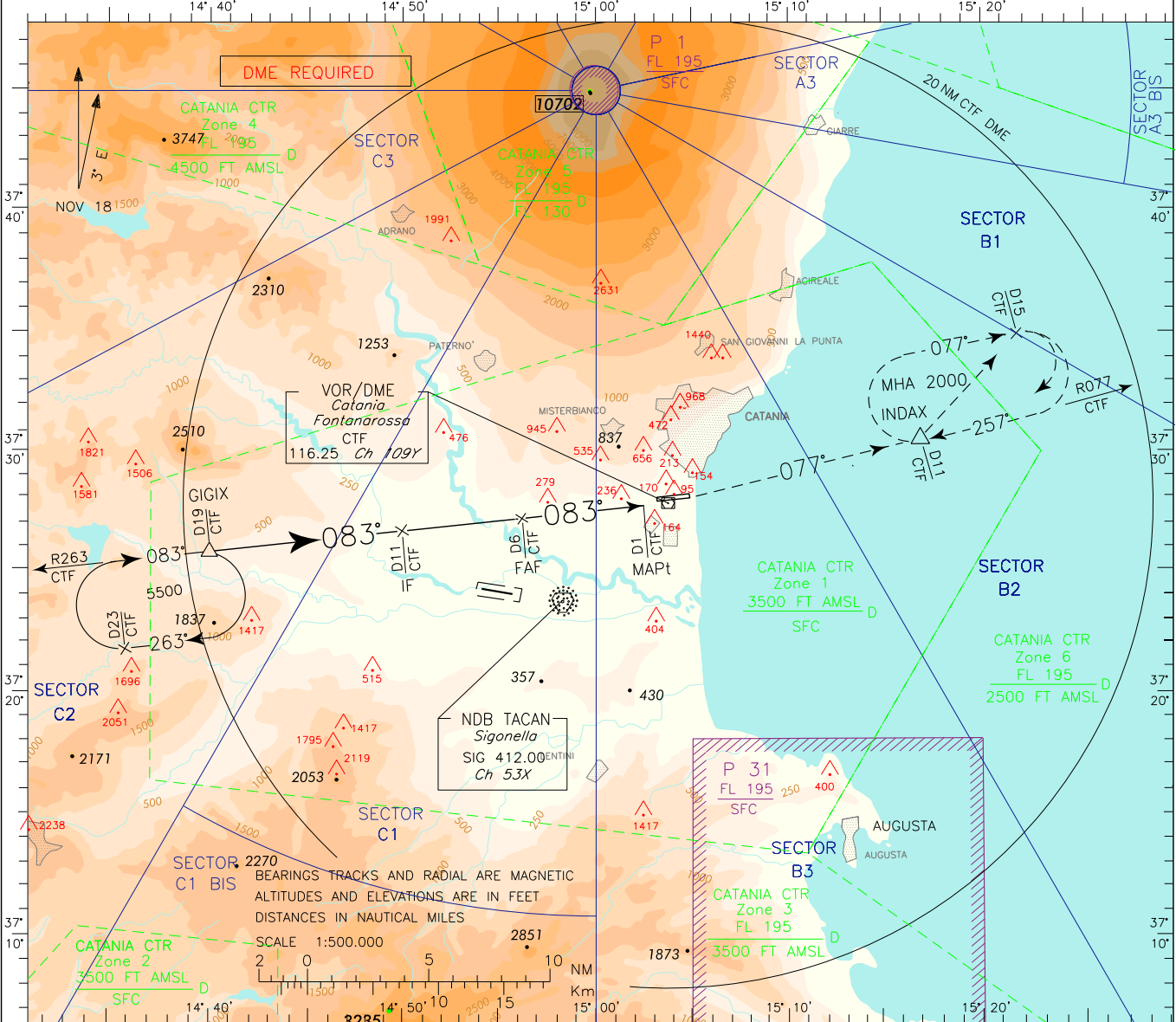
APP Catania APP/Radar
 Catania Director
 TWR Catania TWR
 ATIS Catania Arrival and Departure Information

AD ELEV 39

LICC CATANIA/FONTANAROSSA
 VOR - Z RWY 08

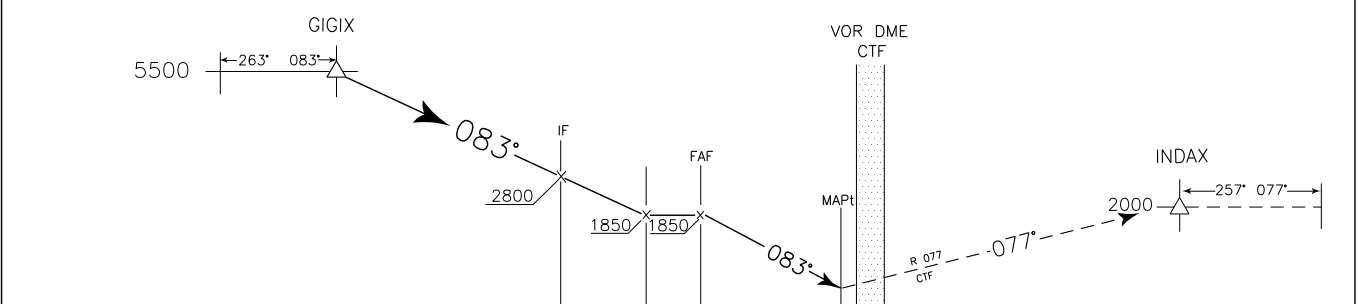
DOC.8168-ED.4-1993-AMD11

CHANGE: MISSED APPROACH DESCRIPTION UPDATED



TRANSITION ALT 7000

MISSED APPROACH: As soon as practicable, join RDL 077 CTF VOR/DME and climb to 2000FT to INDAX (RDL 077/11NM CTF VOR/DME).
 Hold between D11 and D15 CTF DME, outbound TR 077 right turn.

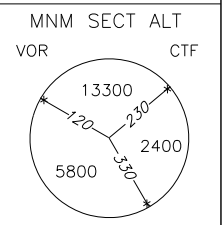


CTF DME	29	28	27	26	25	24	23	22	21	20	19	18	17	16	15	14	13	12	11	10	9	8	7	6	5	4	3	2	1	0	1	2	3	4	5	6	7	8	9	10	11	12	13	14	15	16	17	18	CTF DME		
NM	28	26	24	22	20	18	16	14	12	10	8	6	4	2	0	2	4	6	8	10	12	14	16	18	20	22	24	26	28	30	32	34	36	38	40	42	44	46	48	50	52	54	56	58	60	62	64	66	68	70	NM

OCA (OCH)	A	B	C	D
STRAIGHT IN APPROACH	VOR - Z	650 (620)		
CIRCLING (1)	700 (670)	790 (760)	820 (790)	

(1) REMARK:
 Circling procedure allowed South of RWY only.

GS	FT PER MIN	DIST CTF	ALT(HGT)
100	531	5	1532(1494)
120	637	4	1214(1176)
140	744	3	896(858)
160	850	2	578(540)
180	956	1	260(222)



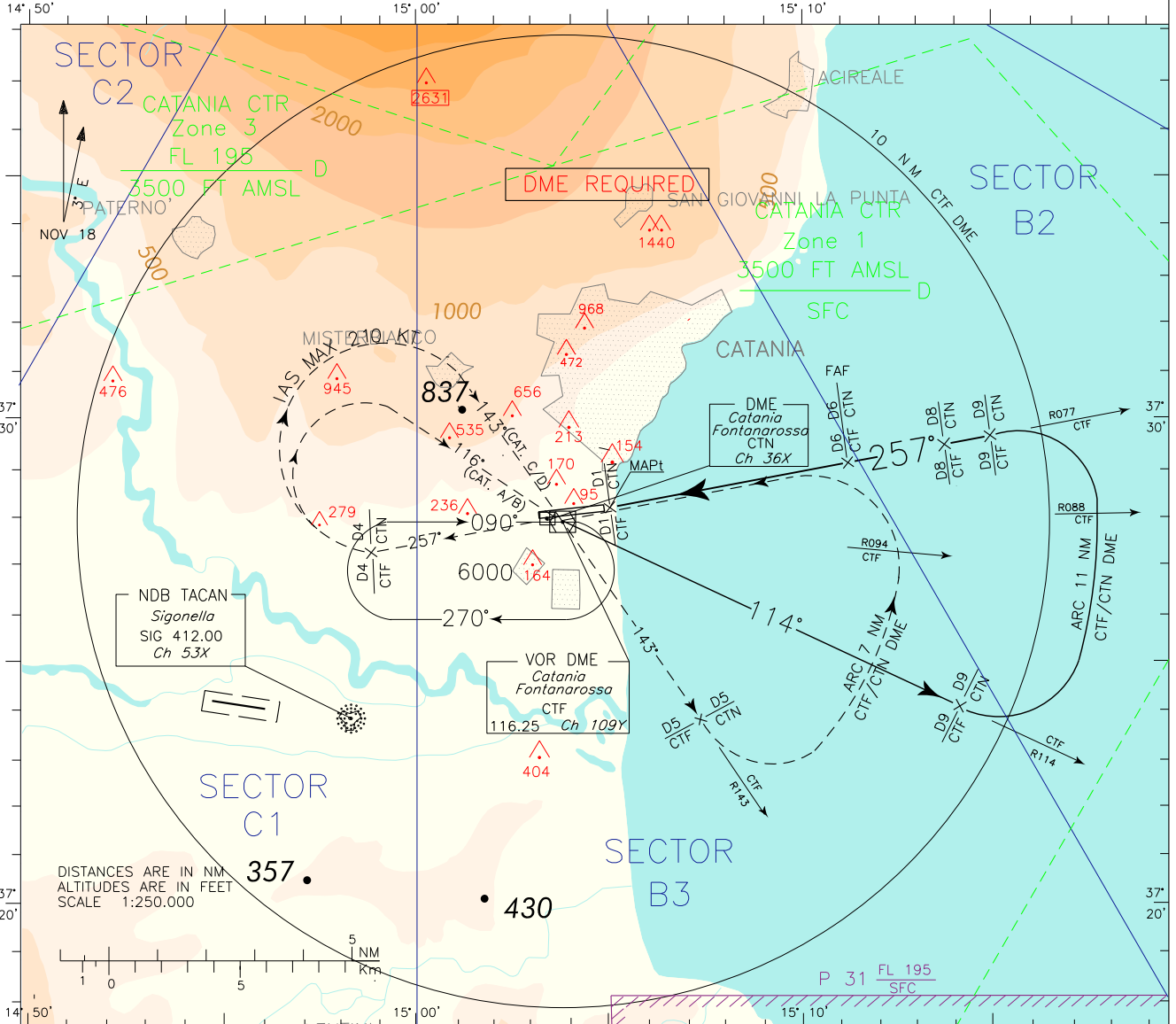
For operational limitations in case of volcanic ash cloud see AD 2 LICC 1-1 tab 23 and ENR 2.1.2
CATANIA CTR

APP Catania APP/Radar 119.250
 Catania Director (120.805)
 TWR Catania TWR 118.700
 ATIS Catania Arrival and Departure Information 127.675

AD ELEV 39
 L I CATANIA/FONTANAROSSA
 C C VOR - Z RWY 26
 C C

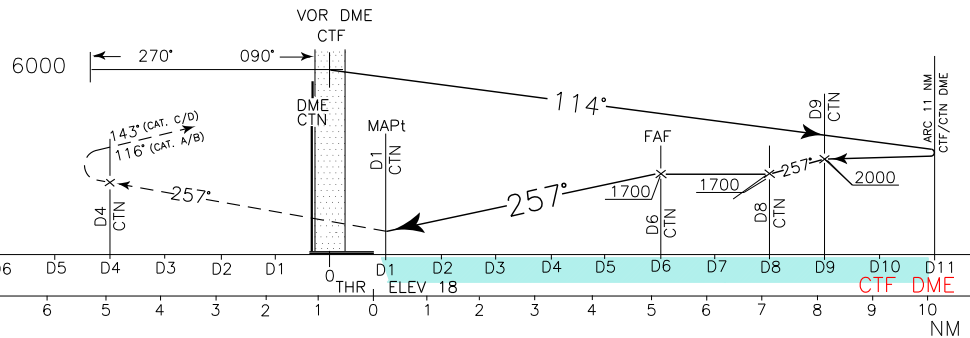
DOC.8168-ED.4-1993-AMD11

CHANGE: CTF NDB COMPLETELY WITHDRAWN AND NEW IAP IDENTIFICATION



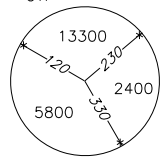
TRANSITION ALT 7000

MISSED APPROACH: Climb to 5000 ft and proceed on TR 257°. At 4 NM CTF (or CTN) DME turn right TR 143° (TR 116° for ACFT Cat. A and B) to CTF VOR, IAS MAX 210 kt. Leave CTF VOR on R143 and at 5 NM CTF (or CTN) DME turn left to join and follow 7 NM ARC CTF (or CTN) DME. Crossing R094 turn left to join and follow R077 to holding pattern.



		D12	D11	D10	D9	D8	D7	D6	D5	D4	D3	D2	D1	0	D1	D2	D3	D4	D5	D6	D7	D8	D9	D10	D11									
		CTF DME													CTF DME																			
		NM																																
OCA (OCH)		A		B		C		D																										
STRAIGHT IN APPROACH	VOR - Z	630 (620)																																
	CIRCLING (1)	700 (670)				790 (760)				820 (790)																								
		GS		FT PER MIN		DIST CTF		ALT(HGT)		MNM		SECT		ALT																				
		100		531		5		1385(1367)		120		230		2400																				
		120		637		4		1070(1052)		140		744		3		755(737)																		
		160		850		2		440(422)		180		956		1		125(107)																		

(1) REMARK:
 Circling procedure allowed South of RWY only.



ICAO - INSTRUMENT APPROACH CHART

AD 2 LICC 5-13

For operational limitations in case of volcanic ash cloud see AD 2 LICC 1-1 tab 23 and ENR 2.1.2 CATANIA CTR

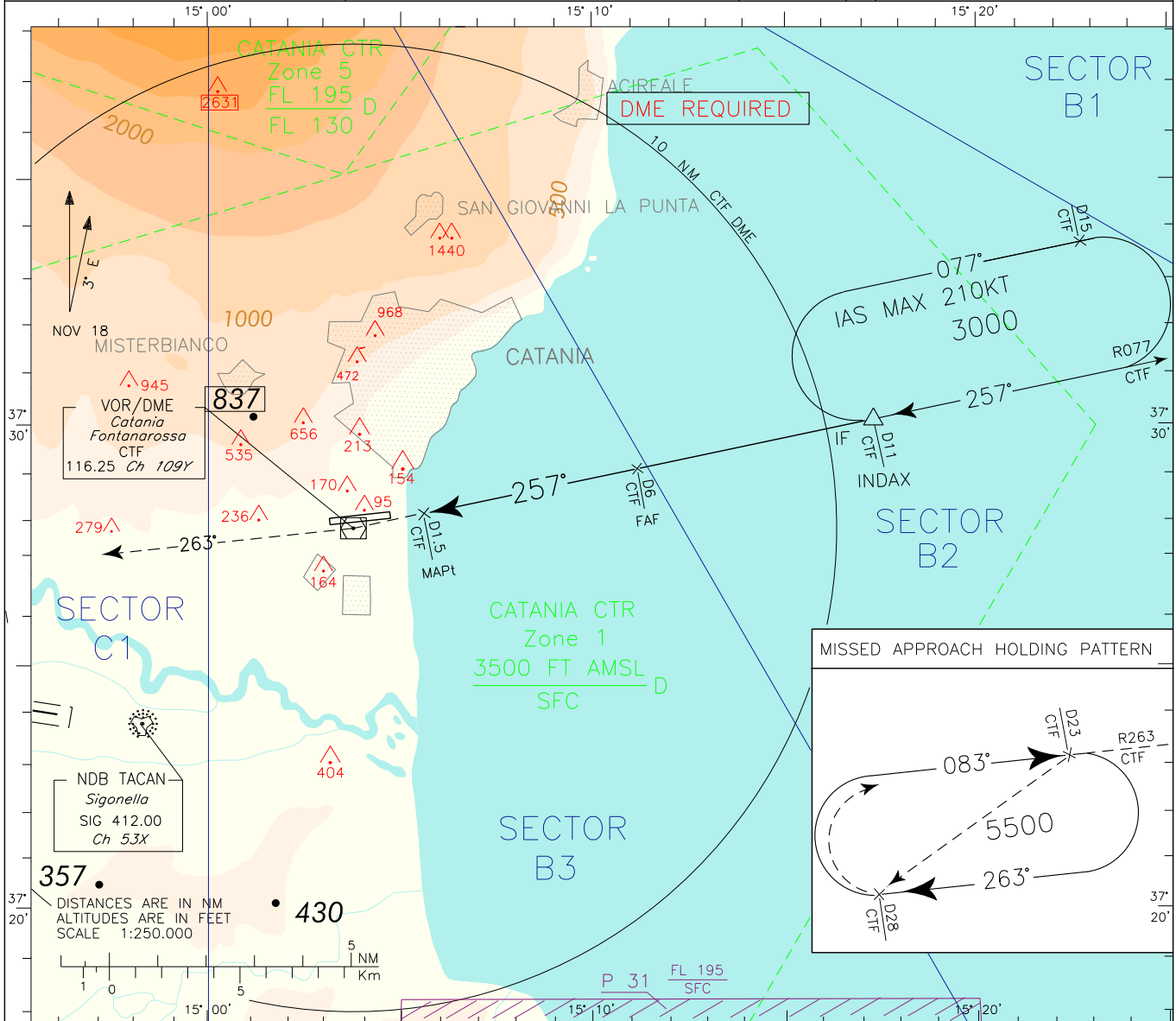
APP Catania APP/Radar 119.250
 Catania Director (120.805)
 TWR Catania TWR 118.700
 ATIS Catania Arrival and Departure Information 127.675

AD ELEV 39

L I C
 C VOR - Y RWY 26

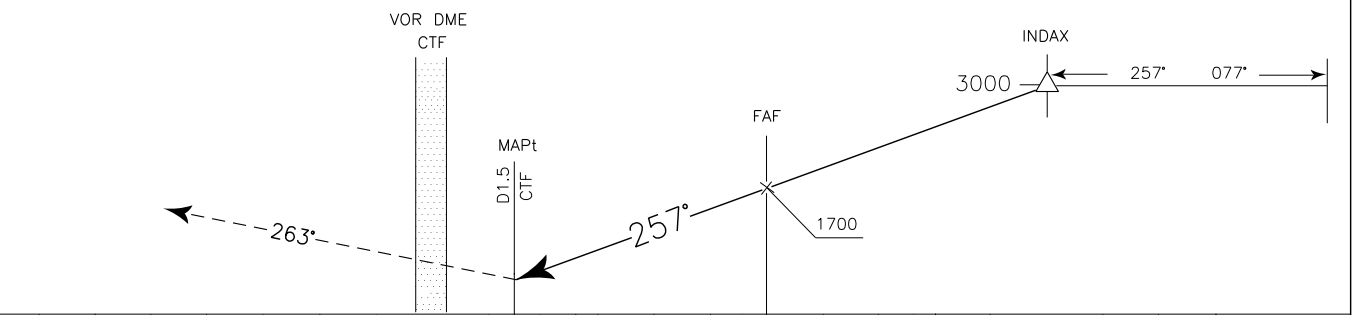
DOC.8168-ED.4-1993-AMD11

CHANGE: REMARK BOX UPDATED



TRANSITION ALT 7000

MISSED APPROACH: Climb to 5500 FT and proceed to CTF VOR/DME to leave on RDL 263 to holding pattern. Minimum climb gradient, due to obstacles and ATC reasons, 3.2% (195FT/NM). Hold between D23 and D28 CTF/DME, inbound TR 083° CTF/VORDME, right turns.

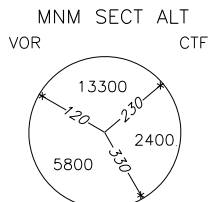


D7	D6	D5	D4	D3	D2	D1	THR	D1	D2	D3	D4	D5	D6	D7	D8	D9	D10	D11	D12	D13	D14	D15	D16	
DME CTF																							DME CTF	
NM																								

OCA (OCH)		A	B	C	D
STRAIGHT IN APPROACH	VOR - Y (M.A. 2.5%)	1250 (1240)			
	VOR - Y (M.A. 3.2%)	630 (620)			
CIRCLING (1)		700 (670)	790 (760)	820 (790)	

(1) REMARK: Circling procedure allowed South of RWY only.

GS	FT PER MIN	DIST CTF	ALT(HGT)
100	531	5	1385(1367)
120	637	4	1070(1052)
140	744	3	755(737)
160	850	2	440(422)
180	956	1	125(107)



ICAO – INSTRUMENT APPROACH CHART

AD 2 LICC 5-15

For operational limitations in case of volcanic ash cloud see AD 2 LICC 1-1 tab 23 and ENR 2.1.2 CATANIA CTR

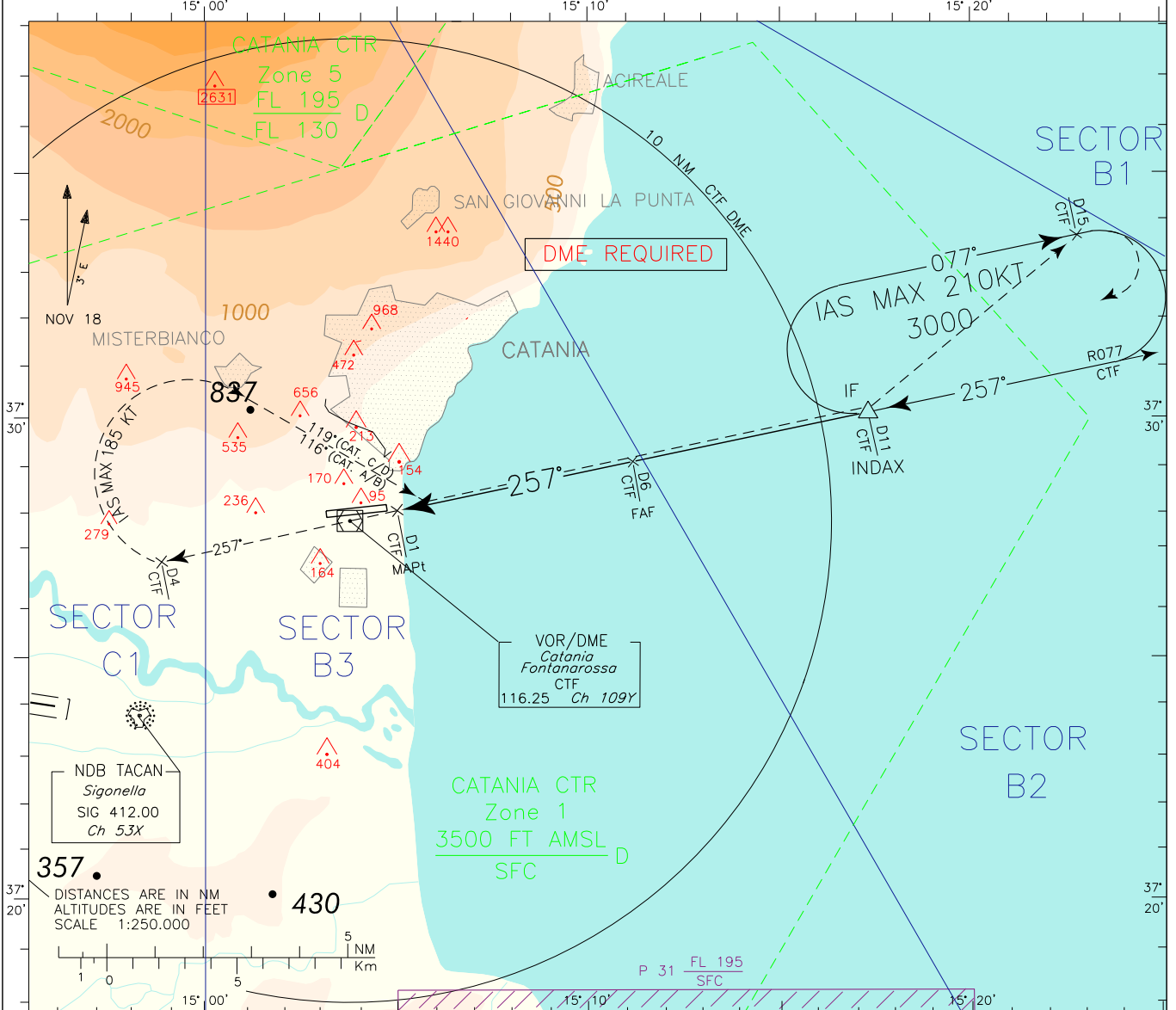
APP Catania APP/Radar 119.250
 Catania Director (120.805)
 TWR Catania TWR 118.700
 ATIS Catania Arrival and Departure Information 127.675

AD ELEV 39

L I C C
 CATANIA/FONTANAROSSA
 VOR – W RWY 26

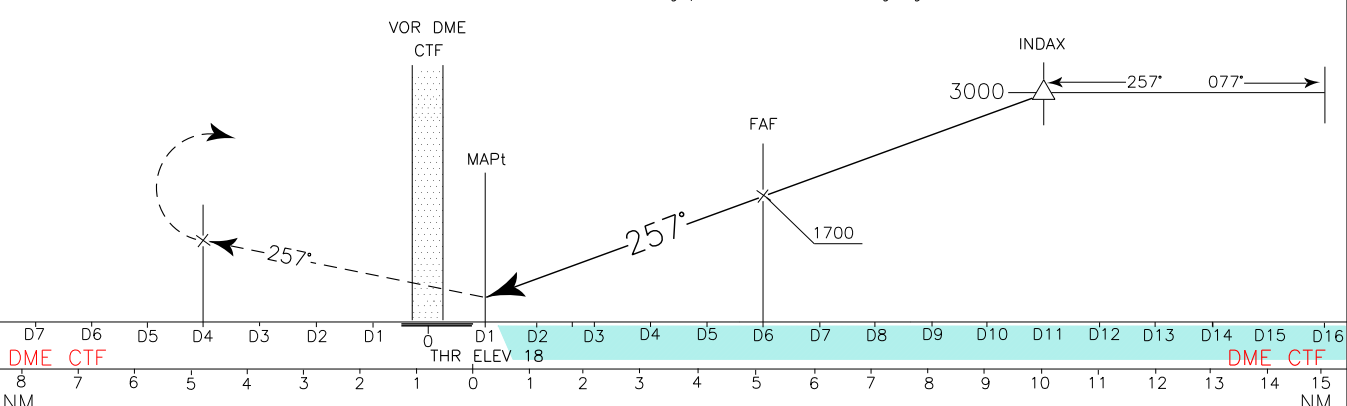
DOC.8168-ED.4-1993-AMD11

CHANGE: REMARK BOX UPDATED



TRANSITION ALT 7000

MISSED APPROACH: Climb to 3000 FT and proceed on RDL 257 CTF VOR/DME (TR257*). At D4 CTF DME turn right, TR 119* (TR 116* for ACFT CAT. A/B) to join RDL 077 to INDAX holding pattern, IAS MAX during right turn 185 KT.

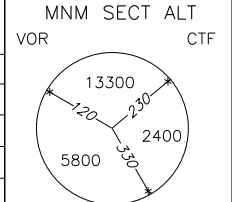


DME CTF 8 7 6 5 4 3 2 1 0 1 2 3 4 5 6 7 8 9 10 11 12 13 14 15 DME CTF NM

OCA (OCH)	A	B	C	D
VOR - W	630 (620)			
CIRCLING (1)	700 (670)		790 (760)	820 (790)

(1) REMARK:
 Circling procedure allowed South of RWY only.

GS	FT PER MIN	DIST CTF	ALT(HGT)
100	531	5	1385(1367)
120	637	4	1070(1052)
140	744	3	755(737)
160	850	2	440(422)
180	956	1	125(107)



ICAO - INSTRUMENT APPROACH CHART

AD 2 LICC 5-17

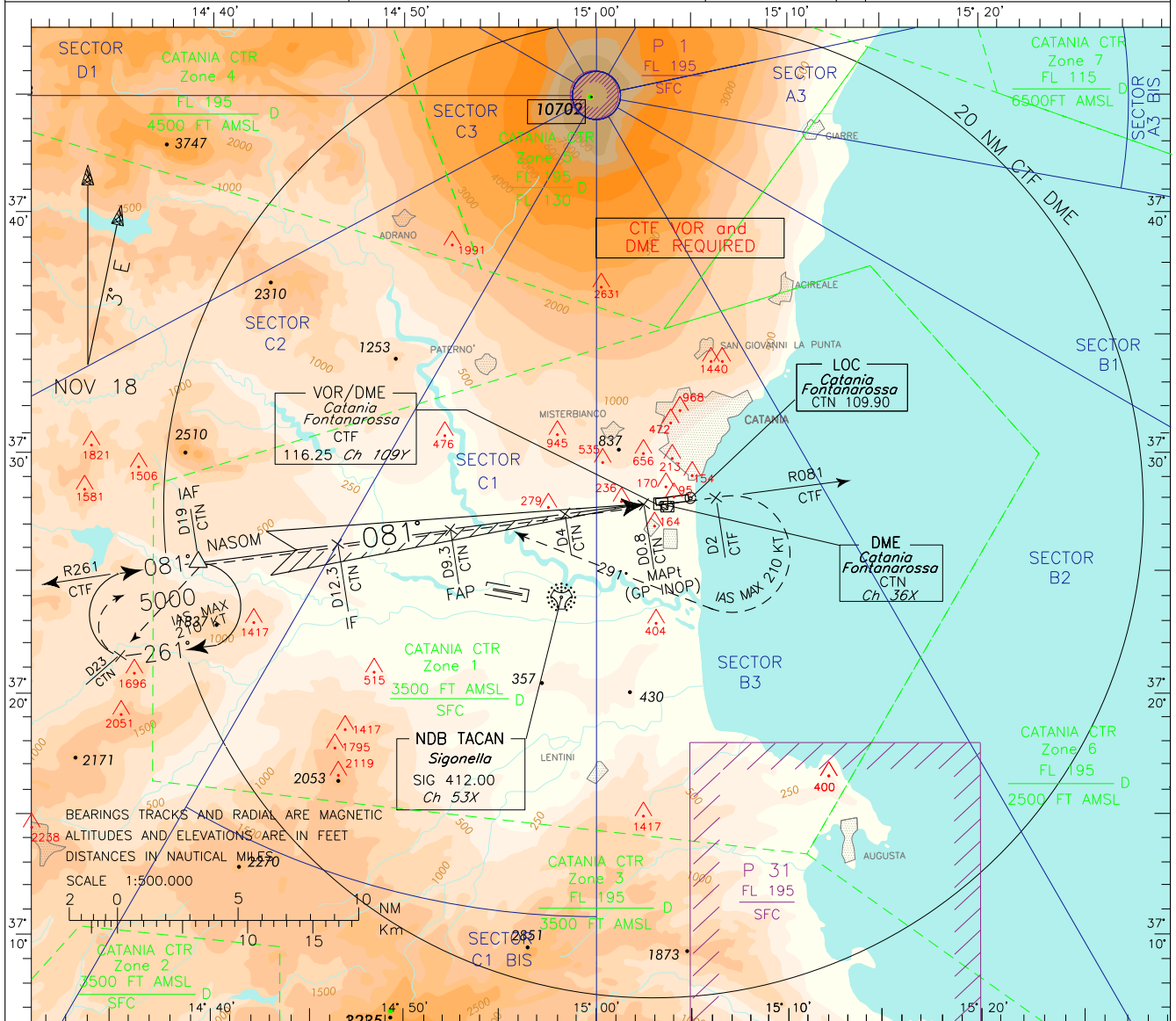
For operational limitations in case of volcanic ash cloud see AD 2 LICC 1-1 tab 23 and ENR 2.1.2 CATANIA CTR

APP Catania APP/Radar
 Catania Director (119.250)
 TWR Catania TWR (120.805)
 ATIS Catania Arrival and Departure Information (118.700)
 127.675

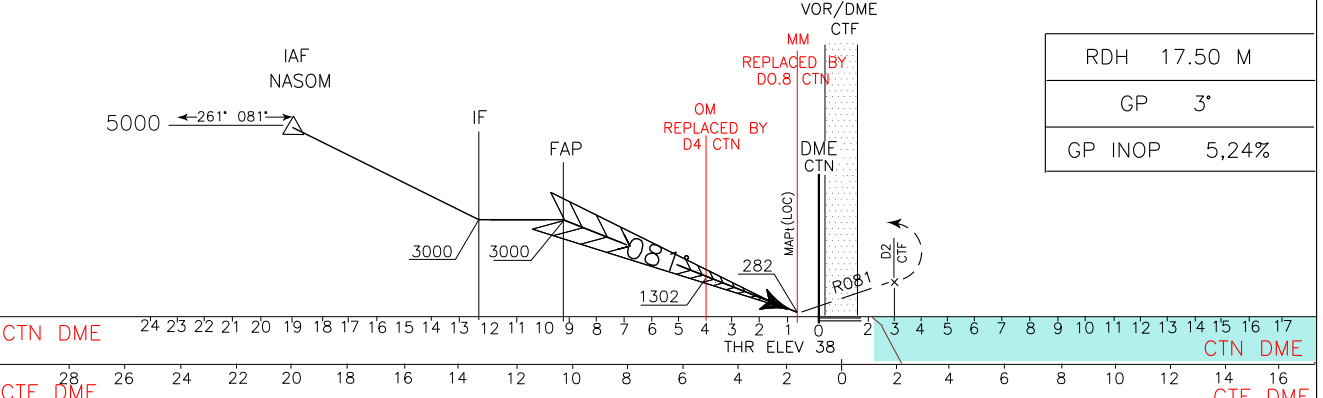
AD ELEV 39

LICC CATANIA/FONTANAROSSA
 CONTINGENCY
 ILS or LOC-Y RWY 08

DOC.8168-ED.6-2014-AMDT 7
 CHANGE: CTF NDB COMPLETELY WITHDRAWN



TRANSITION ALT 7000 MISSED APPROACH: Maintain TR 081° and climb to 5000 ft. At D2 CTF DME, turn right TR 291° (IAS MAX 210 KT) to join and follow RDL 261 CTF VOR/DME (TR 261°) to holding pattern. Hold between D19 and D23 CTN/DME, IAS MAX 210KT, right turn.



CTN DME	24	23	22	21	20	19	18	17	16	15	14	13	12	11	10	9	8	7	6	5	4	3	2	1	0	1	2	3	4	5	6	7	8	9	10	11	12	13	14	15	16	17	CTN DME
CTF DME	28	26	24	22	20	18	16	14	12	10	8	6	4	2	0	2	4	6	8	10	12	14	16	CTF DME																			
OCA (OCH)	A	B	C	D	(1) REMARK: Circling procedure allowed South of RWY only.																							GS	FT PER MIN	DIST CTN	ALT(HGT)	MNM SECT ALT CTF	VOR										
STRAIGHT IN APPROACH	ILS - Y	268 (230)	278 (240)	288 (250)	298 (260)	NOT ALLOWED																							100	531	5	DME	1620(1582)	5800									
	GP INOP	670 (640)																											120	637	4	DME	1302(1264)										
CIRCLING (1)	700 (670)		790 (760)		820 (790)																									140	744	3	DME	984(946)									
																														160	850	2	DME	666(628)									
																													180	956	0.8	DME	282(244)										

For operational limitations in case of volcanic ash cloud see AD 2 LICC 1-1 tab 23 and ENR 2.1.2 CATANIA CTR

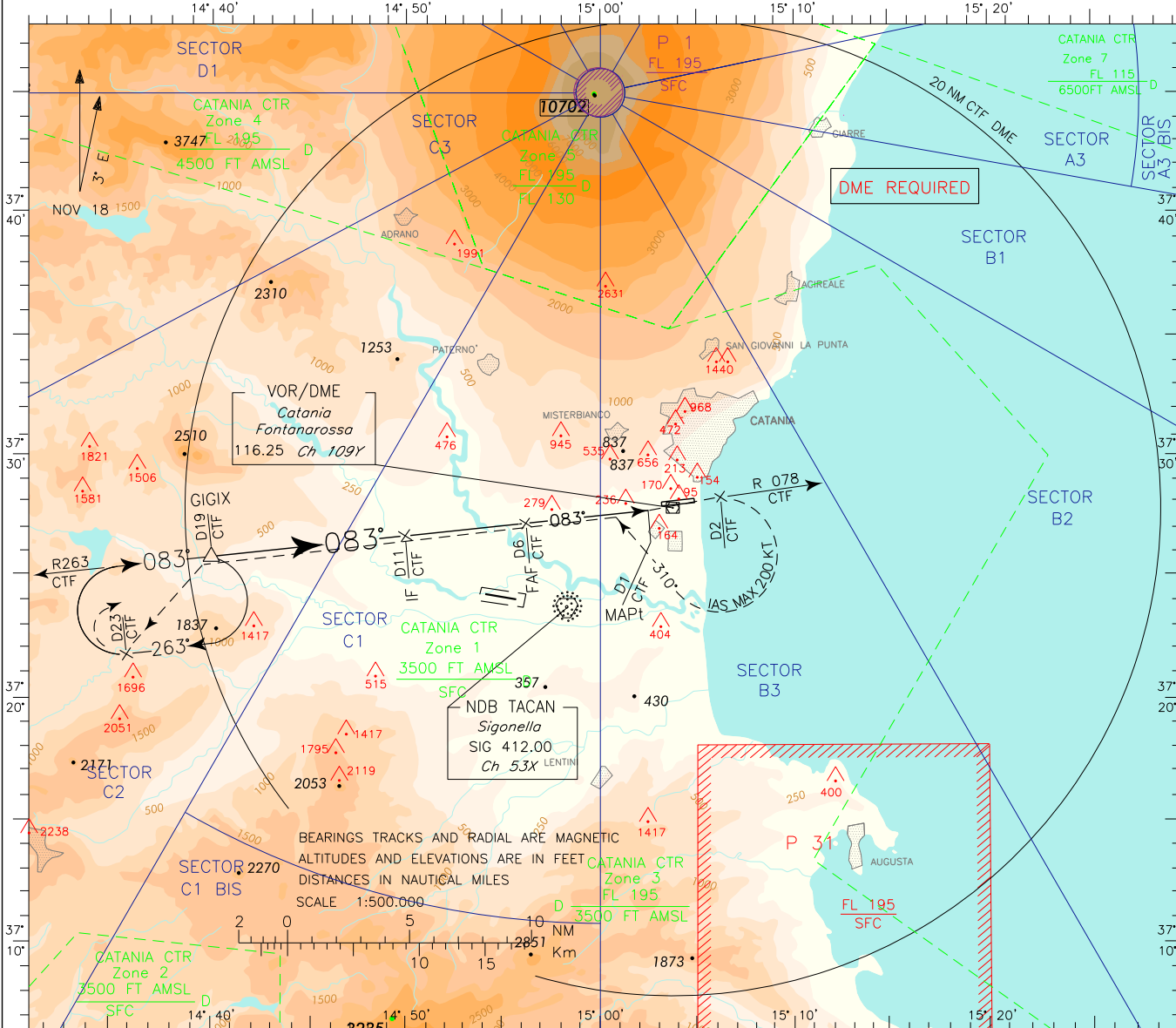
APP Catania APP/Radar 119.250
 Catania Director (120.805)
 TWR Catania TWR 118.700
 ATIS Catania Arrival and Departure Information 127.675

AD ELEV 39

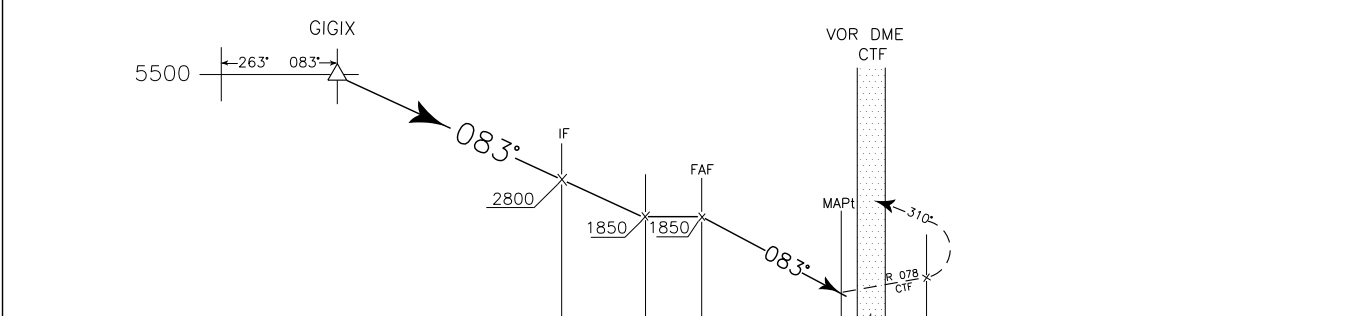
LICC CATANIA/FONTANAROSSA
 CONTINGENCY
 VOR - Y RWY 08

DOC.8168-ED.4-1993-AMD11

CHANGE: REMARK BOX UPDATED



TRANSITION ALT 7000 MISSED APPROACH: As soon as practicable, join RDL 078 CTF VOR/DME and climb to 5500FT (Minimum climb gradient 3.2%-195FT/NM). At D2 CTF DME, turn right TR310° to join and follow RDL 263 CTF VOR/DME to holding pattern. IAS MAX during right turn 200KT.

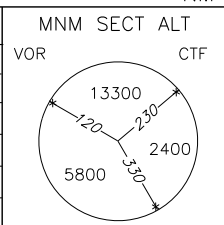


CTF DME	29	28	27	26	25	24	23	22	21	20	19	18	17	16	15	14	13	12	11	10	9	8	7	6	5	4	3	2	1	0	1	2	3	4	5	6	7	8	9	10	11	12	13	14	15	16				
NM	28	26	24	22	20	18	16	14	12	10	8	6	4	2	0	2	4	6	8	10	12	14	16	18	20	22	24	26	28	30	32	34	36	38	40	42	44	46	48	50	52	54	56	58	60	62	64	66	68	70

OCA (OCH)	A	B	C	D
STRAIGHT IN APPROACH	VOR - Y M.A. 2.5%	1250 (1220)		
	VOR - Y M.A. 3.2%	650 (620)		
CIRCLING (1)	700 (670)	790 (760)	820 (790)	

(1) REMARK: Circling procedure allowed South of RWY only.

GS	FT PER MIN
100	531
120	637
140	744
160	850
180	956



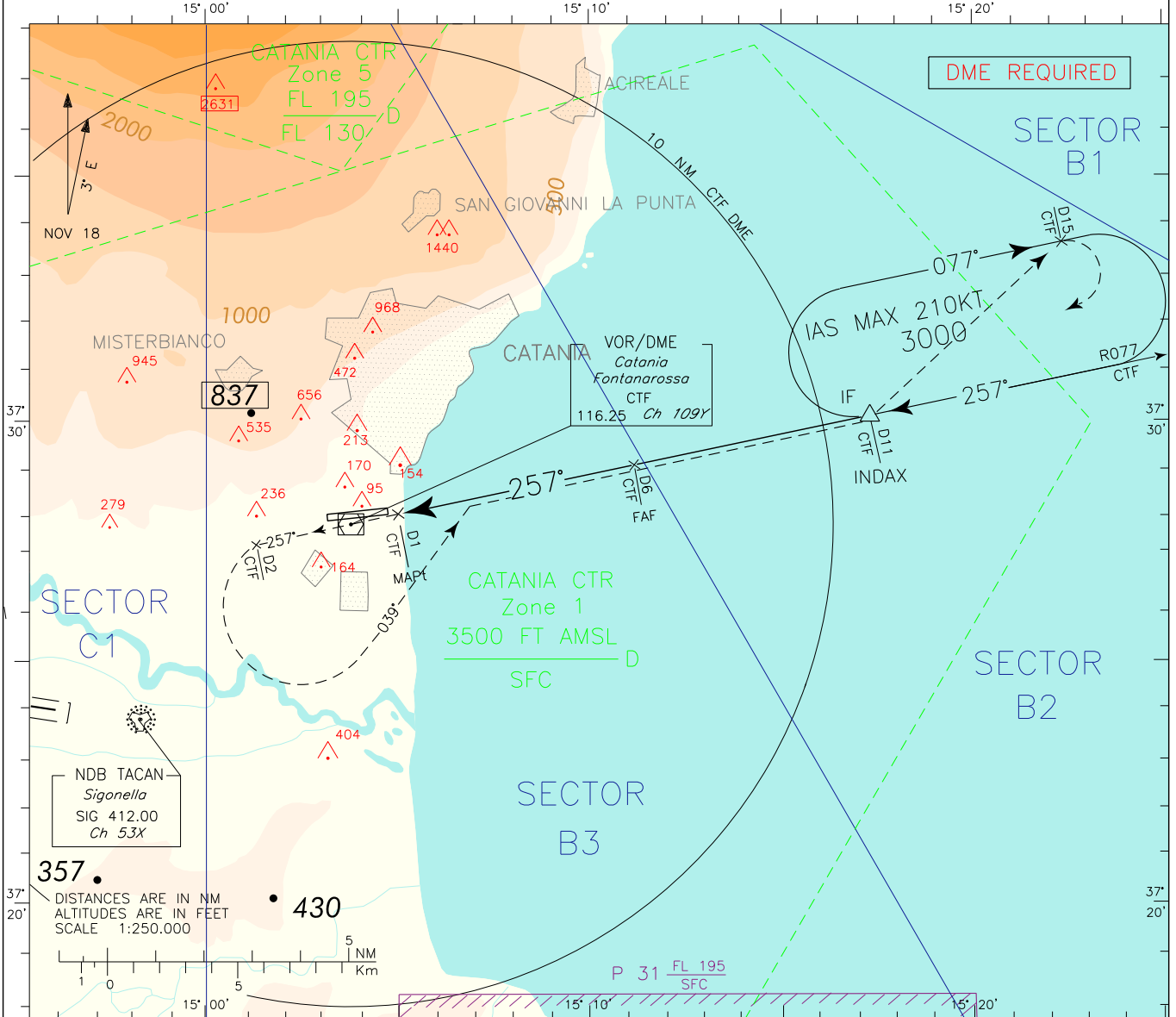
For operational limitations in case of volcanic ash cloud see AD 2 LICC 1-1 tab 23 and ENR 2.1.2 CATANIA CTR

APP Catania APP/Radar 119.250
 Catania Director (120.805)
 TWR Catania TWR 118.700
 ATIS Catania Arrival and Departure Information 127.675

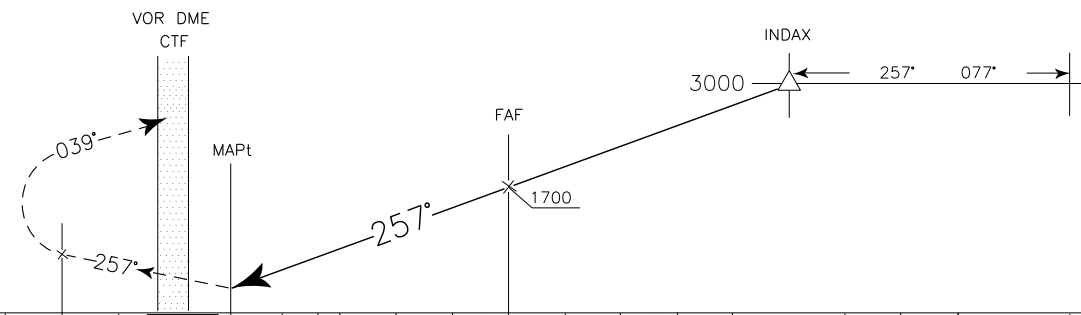
AD ELEV 39
 L I C C
 CATANIA/FONTANAROSSA
 CONTINGENCY
 VOR - X RWY 26

DOC.8168-ED.4-1993-AMD11

CHANGE: REMARK BOX UPDATED



TRANSITION ALT 7000 MISSED APPROACH: Climb to 3000 FT and proceed on RDL 257 CTF VOR/DME (TR257*); at D2 CTF DME turn left, TR 039*, to join and follow RDL 077 CTF VOR/DME bound INDAX holding pattern.

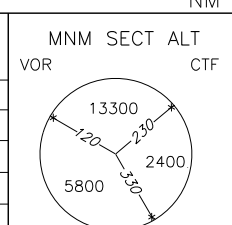


D7	D6	D5	D4	D3	D2	D1	THR	D1	D2	D3	D4	D5	D6	D7	D8	D9	D10	D11	D12	D13	D14	D15	D16
DME CTF											DME CTF												
NM																							

OCA (OCH)		A	B	C	D
STRAIGHT IN APPROACH	VOR - X	630 (620)			
CIRCLING (1)		700 (670)	790 (760)	820 (790)	

(1) REMARK:
 Circling procedure allowed South of RWY only.

GS	FT PER MIN	DIST CTF	ALT(HGT)
100	531	5	1385(1367)
120	637	4	1070(1052)
140	744	3	755(737)
160	850	2	440(422)
180	956	1	125(107)



ICAO - INSTRUMENT APPROACH CHART

AD 2 LICC 5-23

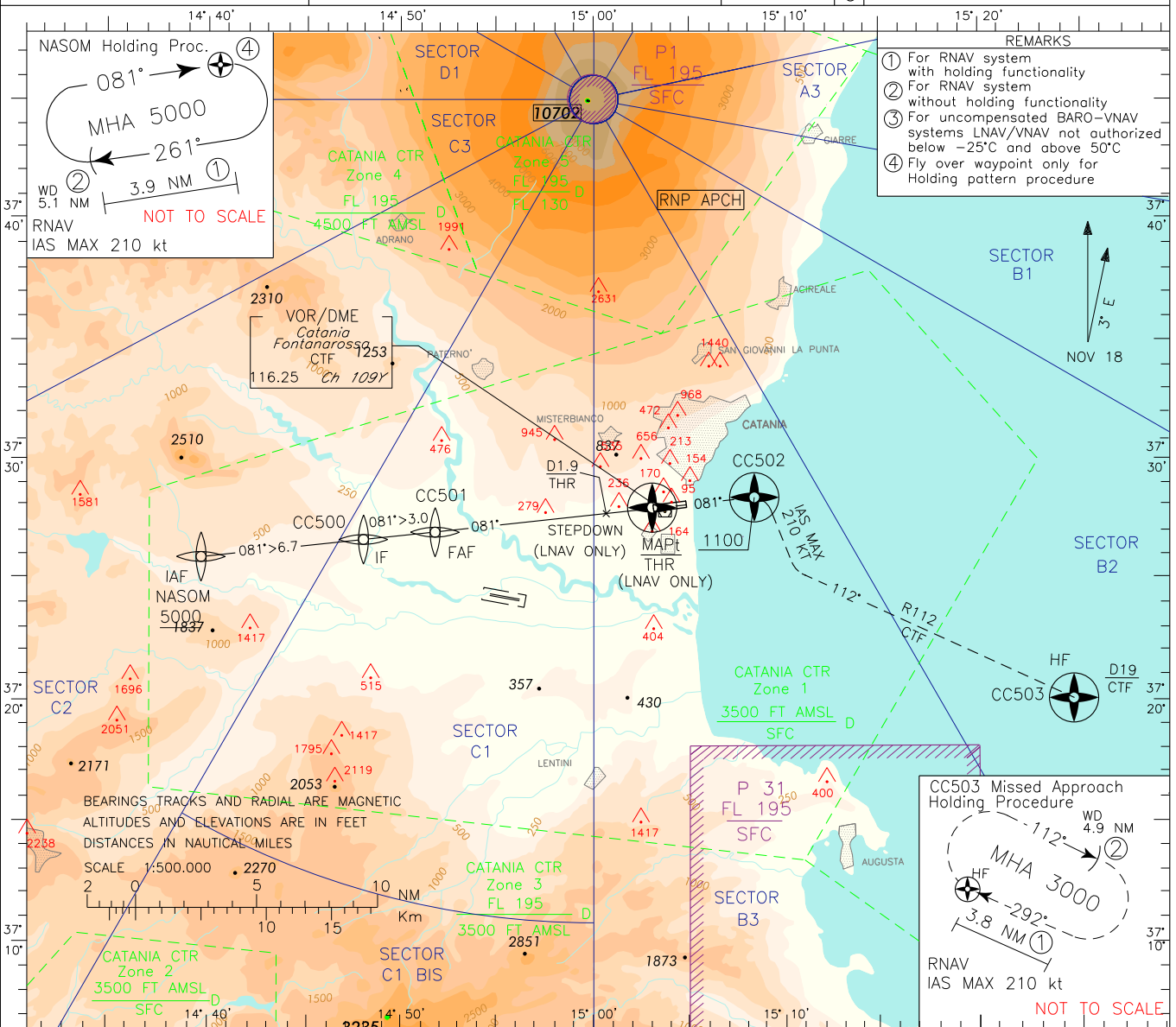
DOC.8168-ED.6-2014-AMDT 7

For operational limitations in case of volcanic ash cloud see AD 2 LICC 1-1 tab 23 and ENR 2.1.2 CATANIA CTR

APP	Catania APP/Radar	119.250
	Catania Director	(120.805)
TWR	Catania TWR	118.700
ATIS	Catania Arrival and Departure Information	127.675

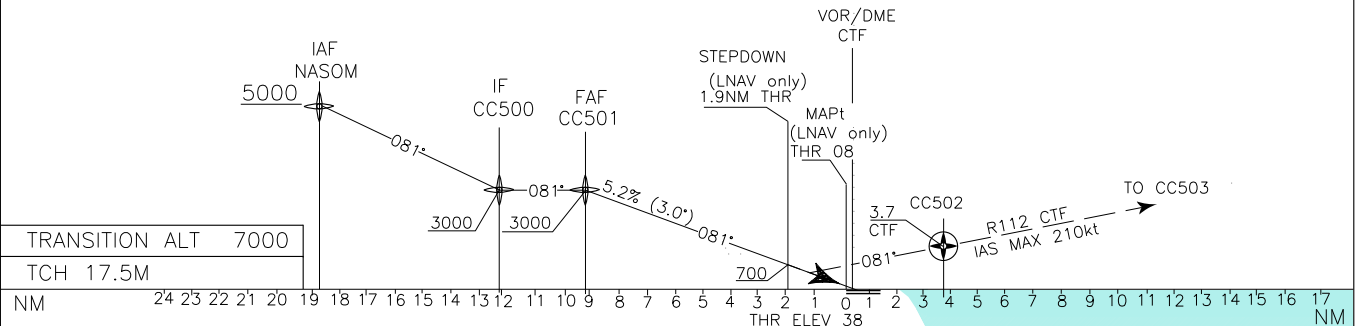
AD ELEV
39

CATANIA/FONTANAROSSA
RNP-Z RWY 08

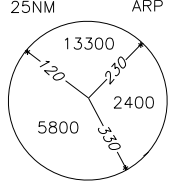


CHANGE: NEW IAP IDENTIFICATION

MISSED APPROACH : * Proceed on RWY heading (TR 081°) climbing to 3000ft. At CC502 (R079/3.7NM CTF VOR/DME) to be reached at 1100 ft or above, turn right (IAS MAX 210kt) to join and follow TR112° (R112 CTF VOR/DME) bound to CC503 (RDL112/19NM) holding pattern.
* CTF VOR/DME indication provided as backup in case of loss of GNSS signal during missed approach.



TRANSITION ALT	7000																																									
TCH	17.5M																																									
NM	24	23	22	21	20	19	18	17	16	15	14	13	12	11	10	9	8	7	6	5	4	3	2	1	0	1	2	3	4	5	6	7	8	9	10	11	12	13	14	15	16	17
CTF DME																																										
OCA (OCH)	A	B	C	D																																						
STRAIGHT IN APPROACH	LNAV/VNAV (3)	520 (482)	532 (494)	540 (502)	550 (512)																																					
	LNAV	570 (540)																																								
CIRCLING (4)	700 (670)		790 (760)		820 (790)																																					
(4) REMARK: Circling procedure allowed South of RWY only. NOT ALLOWED	GS	FT per MIN	DIST	THR	ALT(HGT)																																					
	80	420	9.1		2990(2952)	MNM	SECT	ALT																																		
	100	520	8.1		2670(2632)	25NM		ARP																																		
	120	630	7.1		2350(2312)																																					
	140	740	6.1		2035(1997)																																					
	160	840	5.1		1715(1677)																																					
180	950	4.1		1395(1357)																																						
		2.1		1080(1042)																																						
		1.5		760(722)																																						
				570(532)																																						



TABULAR DESCRIPTION

RNP - Z RWY 08

Path Terminator	Waypoint Identifier	Fly Over	Track °M(°T)	Distance (NM)	Turn Direction	Altitude (ft)	Speed Limit (Kt)	VPA/ TCH	Distance from THR	Navigation Specification	Remarks
IF	NASOM	-	-	-	-	+5000	-	-	18.9	RNAV 1	-
TF	CC500	-	081° (083.8°)	6.7	-	+3000	-	-	12.1	RNAV1	-
TF	CC501	-	081° (083.8°)	3.0	-	+3000	-	-	9.1	RNAV 1	-
-	-	-	081° (083.9°)	-	-	+700	-	-	1.9	RNP APCH	Stepdown fix (LNAV only)
TF	THR RWY 08	Y	081° (084.0°)	9.1	-	+95.4	-	-3% 17.5M	-	RNP APCH	MAPt (LNAV only)
TF	CC502	Y	081° (084.0°)	-	-	+1100	-	-	-	RNP APCH	-
CF	CC503	Y	112° (115.0°)	-	R	+3000	210	-	-	RNP APCH	-

Path Terminator	Waypoint Identifier	Inbound Track °M(°T)	Turn Direction	Altitude Constraint	Speed Limit KIAS	D (NM)*	WD (NM)**	TYPE
HM	NASOM	081°(084.2°)	R	+5000	210	3.9	5.1	RNAV1
HM	CC503	292°(295.0°)	R	+3000	210	3.8	4.9	RNAV1

(*): For RNAV system with holding functionality.

(**): For RNAV system without holding functionality.

Waypoint Table Formatted according ARINC 424 standards IAP RNAV (GNSS) – Z RWY 08

WAYPOINT	LATITUDE	LONGITUDE
NASOM	N37255500	E014393800
CC500	N37263891	E014480377
CC501	N37265829	E014514849
CC502	N37282214	E015081873
CC503	N37200200	E015245400

For operational limitations in case of volcanic ash cloud see AD 2 LICC 1-1 tab 23 and ENR 2.1.2 CATANIA CTR

APP Catania APP/Radar 119.250
 Catania Director (120.805)
 TWR Catania TWR 118.700
 ATIS Catania Arrival and Departure Information 127.675

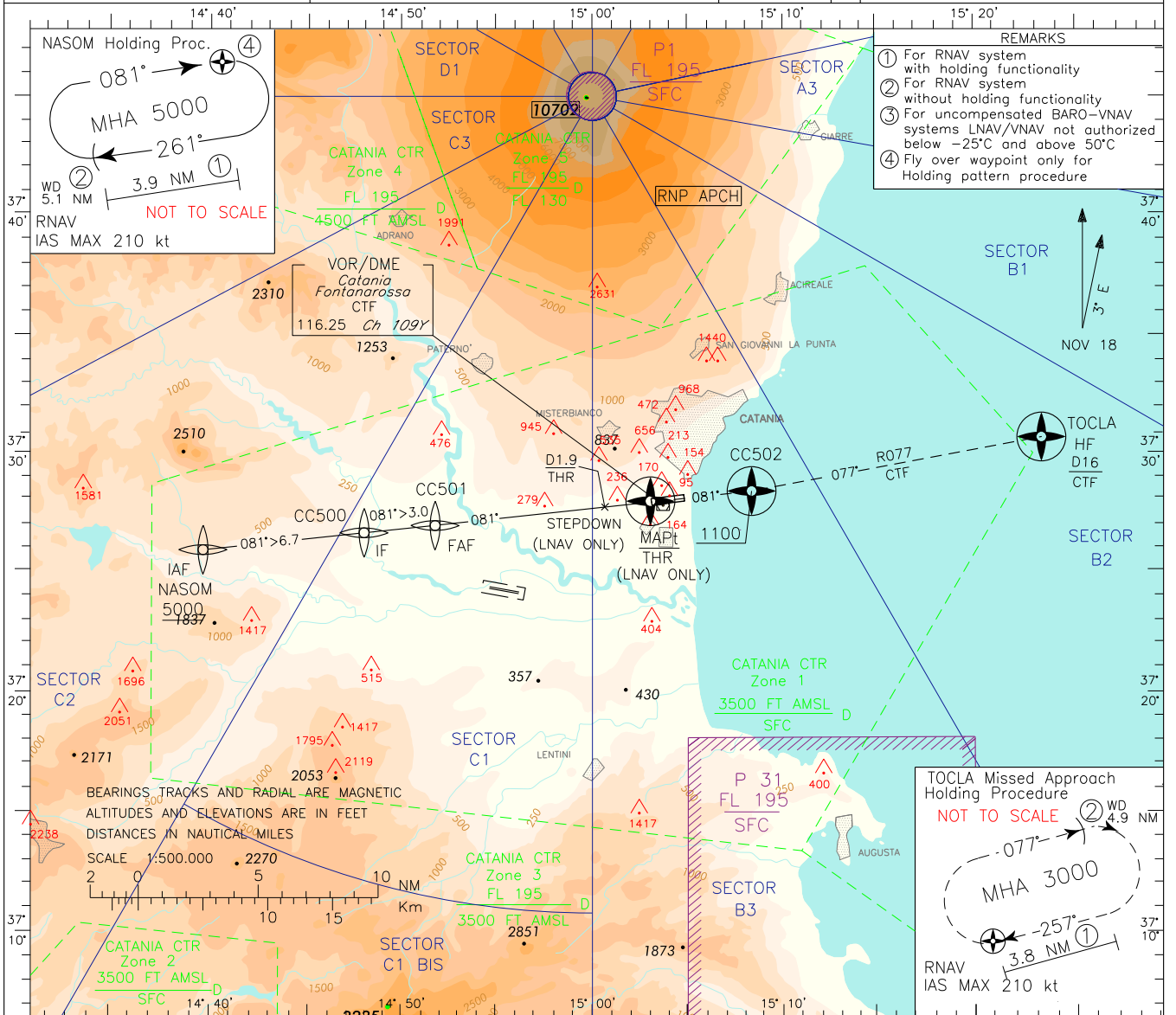
AD ELEV 39

LICC

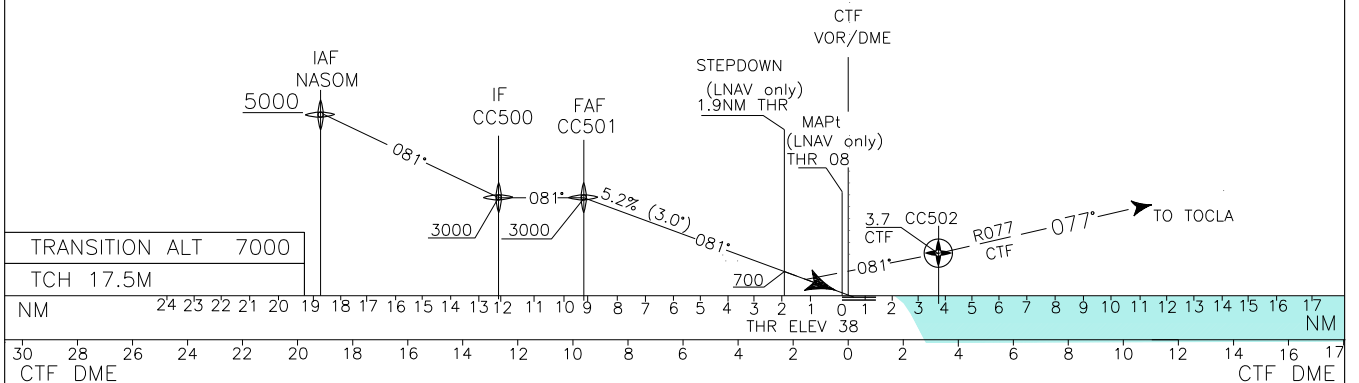
CATANIA/FONTANAROSSA
 RNP-Y RWY 08

DOC.8168-ED.6-2014-AMDT 7

CHANGE: NEW IAP IDENTIFICATION



MISSED APPROACH : * Proceed on RWY heading (TR 081°) climbing to 3000ft. At CC502 (R079/3.7NM CTF VOR/DME) to be reached at 1100 ft or above, join and follow TR077° (R077 CTF VOR/DME) bound to TOCLA (R077/16 NM CTF VOR/DME) holding pattern.
 * CTF VOR/DME indication provided as backup in case of loss of GNSS signal during missed approach.



STRAIGHT IN APPROACH	OCA (OCH)	A B C D				(4) REMARK: Circling procedure allowed South of RWY only.	GS	FT per MIN	DIST THR	ALT(HGT)	MNM SECT 25NM	ALT ARP
		A	B	C	D							
LNAV/VNAV (3)	520 (482)	532 (494)	540 (502)	550 (512)	NOT ALLOWED	80	420	9.1	2990(2952)			
LNAV	570 (540)					100	520	8.1	2670(2632)			
						120	630	7.1	2350(2312)			
						140	740	6.1	2035(1997)			
						160	840	5.1	1715(1677)			
CIRCLING (4)	700 (670)	790 (760)	820 (790)			180	950	4.1	1395(1357)			
								3.1	1080(1042)			
								2.1	760(722)			
								1.5	570(532)			

TABULAR DESCRIPTION

RNP - Y RWY 08

Path Terminator	Waypoint Identifier	Fly Over	Track °M(°T)	Distance (NM)	Turn Direction	Altitude (ft)	Speed Limit (Kt)	VPA/TCH	Distance from THR	Navigation Specification	Remarks
IF	NASOM	-	-	-	-	+5000	-	-	18.9	RNAV 1	-
TF	CC500	-	081° (083.8°)	6.7	-	+3000	-	-	12.1	RNAV1	-
TF	CC501	-	081° (083.8°)	3.0	-	+3000	-	-	9.1	RNAV 1	-
-	-	-	081° (083.9°)	-	-	+700	-	-	1.9	RNP APCH	Stepdown fix (LNAV only)
TF	THR RWY 08	Y	081° (084.0°)	9.1	-	+95.4	-	-3°/ 17.5M	-	RNP APCH	MAPt (LNAV only)
TF	CC502	Y	081° (084.0°)	-	-	+1100	-	-	-	RNP APCH	-
CF	TOCLA	Y	077° (080.0°)	-	-	+3000	-	-	-	RNP APCH	-

Path Terminator	Waypoint Identifier	Inbound Track °M(°T)	Turn Direction	Altitude Constraint	Speed Limit KIAS	D (NM)*	WD (NM)**	TYPE
HM	NASOM	081°(084.2°)	R	+5000	210	3.9	5.1	RNAV1
HM	TOCLA	257°(260.3°)	R	+3000	210	3.8	4.9	RNAV1

(*): For RNAV system with holding functionality.

(**): For RNAV system without holding functionality.

Waypoint Table Formatted according ARINC 424 standards IAP RNAV (GNSS) Y RWY 08

WAYPOINT	LATITUDE	LONGITUDE
NASOM	N37255500	E014393800
CC500	N37263891	E014480377
CC501	N37265829	E014514849
CC502	N37282214	E015081873
TOCLA	N37303805	E015233287

DOC.8168-ED.6-2014-AMDT 7

CHANGE: NEW IAP IDENTIFICATION

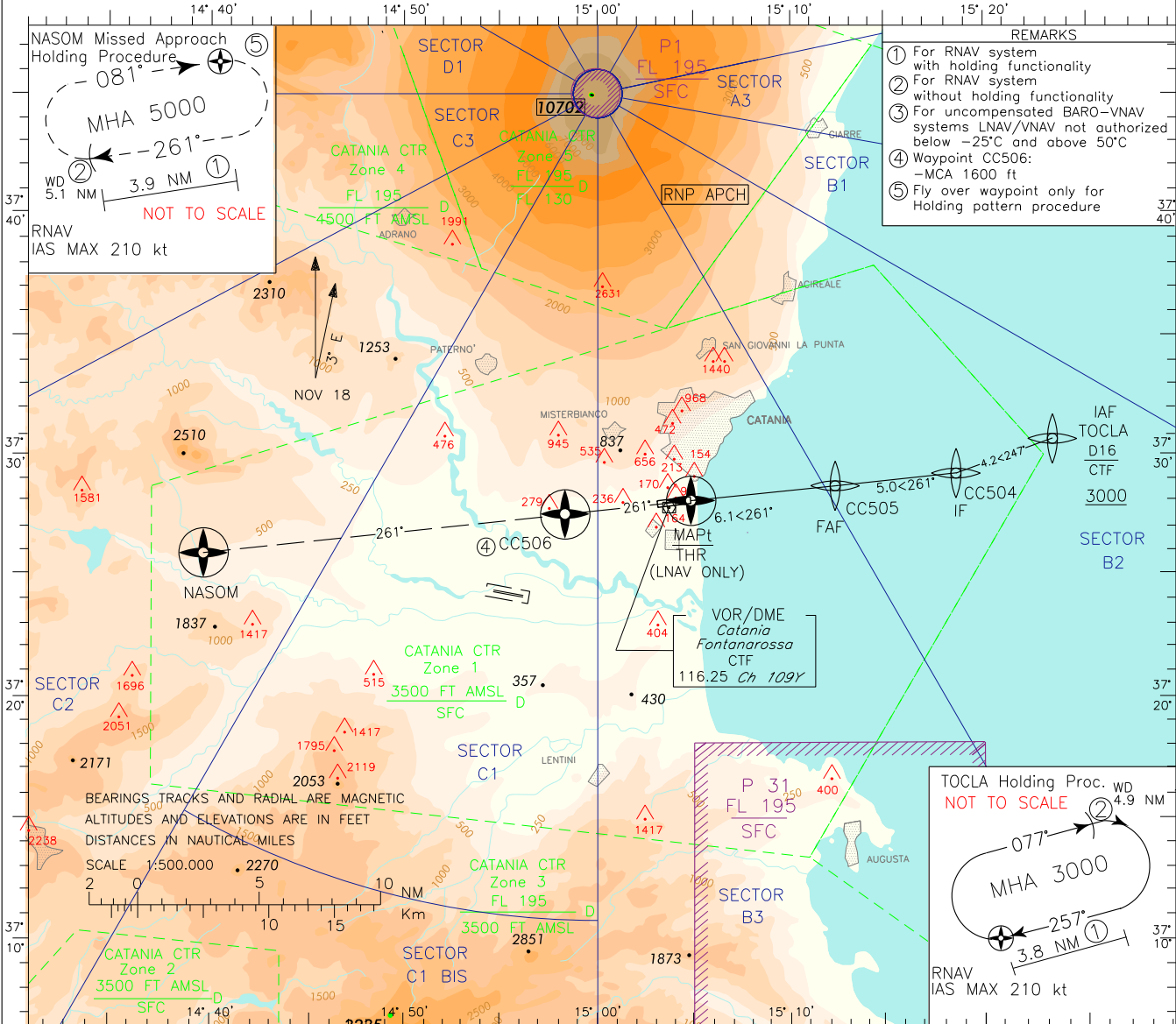
For operational limitations in case of volcanic ash cloud see AD 2 LICC 1-1 tab 23 and ENR 2.1.2 CATANIA CTR

APP Catania APP/Radar
 TWR Catania Director
 ATIS Catania TWR
 Catania Arrival and Departure Information

119.250
 (120.805)
 118.700
 127.675

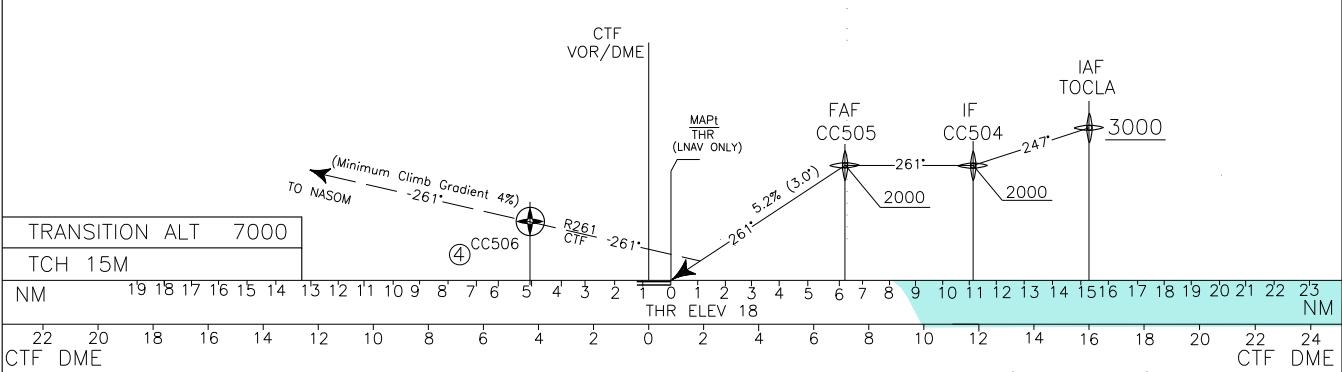
AD ELEV 39
 LICC

CATANIA/FONTANAROSSA
 RNP-Z RWY 26



- REMARKS
- ① For RNAV system with holding functionality
 - ② For RNAV system without holding functionality
 - ③ For uncompensated BARO-VNAV systems LNAV/VNAV not authorized below -25°C and above 50°C
 - ④ Waypoint CC506: -MCA 1600 ft
 - ⑤ Fly over waypoint only for Holding pattern procedure

MISSED APPROACH : * Proceed on RWY heading (TR 261°) climbing to 5000ft. At CC506 (R262/4.3NM CTF VOR/DME) to be reached at 1600 ft or above, join and follow TR261° (R261 CTF VOR/DME) bound to NASOM (R261/19NM CTF VOR/DME) holding pattern (Minimum Climb Gradient 4% due to ATC reason).
 * CTF VOR/DME indication provided as backup in case of loss of GNSS signal during missed approach.



TRANSITION ALT 7000		TCH 15M		NM		CTF DME																																									
		19	18	17	16	15	14	13	12	11	10	9	8	7	6	5	4	3	2	1	0	1	2	3	4	5	6	7	8	9	10	11	12	13	14	15	16	17	18	19	20	21	22	23	24	25	
STRAIGHT IN APPROACH	OCA (OCH)	A	B	C	D																																										
	LNAV/VNAV (3)	340 (322)	400 (382)	460 (442)	470 (452)																																										
CIRCLING (5)	LNAV	530 (520)																																													
		700 (670)			790 (760)	820 (790)																																									
		GS	FT per MIN	DIST	THR	ALT(HGT)	MNM SECT ALT 25NM		ARP																																						
		80	420	6		1985(1967)																																									
		100	530	5		1665(1647)																																									
		120	630	4		1345(1327)																																									
		140	740	3		1025(1007)																																									
		160	850	2		710(692)																																									
		180	950	1.4		530(512)																																									

TABULAR DESCRIPTION

RNP – Z RWY 26

Path Terminator	Waypoint Identifier	Fly Over	Track °M(°T)	Distance (NM)	Turn Direction	Altitude (ft)	Speed Limit (Kt)	VPA/TCH	Distance from THR	Navigation Specification	Remarks
IF	TOCLA	-	-	-	-	+3000	-	-	15.2	RNAV 1	-
TF	CC504	-	247° (250.3°)	4.2	-	+2000	-	-	11.1	RNAV1	-
TF	CC505	-	261° (264.1°)	5.0	-	+2000	-	-	6.1	RNAV 1	-
TF	THR RWY 26	Y	261° (264.0°)	6.1	-	+68	-	-3°/ 15M	-	RNP APCH	MAPt (LNAV only)
TF	CC506	Y	261° (263.9°)	-	-	+1600	-	-	-	RNP APCH	Minimum Climb Gradient 4% due to ATC
CF	NASOM	Y	261° (264.0°)	-	-	+5000	-	-	-	RNP APCH	Minimum Climb Gradient 4% due to ATC

Path Terminator	Waypoint Identifier	Inbound Track °M(°T)	Turn Direction	Altitude Constraint	Speed Limit KIAS	D (NM)*	WD (NM)**	TYPE
HM	TOCLA	257°(260.3°)	R	+3000	210	3.8	4.9	RNAV1
HM	NASOM	081°(084.2°)	R	+5000	210	3.9	5.1	RNAV1

(*): For RNAV system with holding functionality.

(**): For RNAV system without holding functionality.

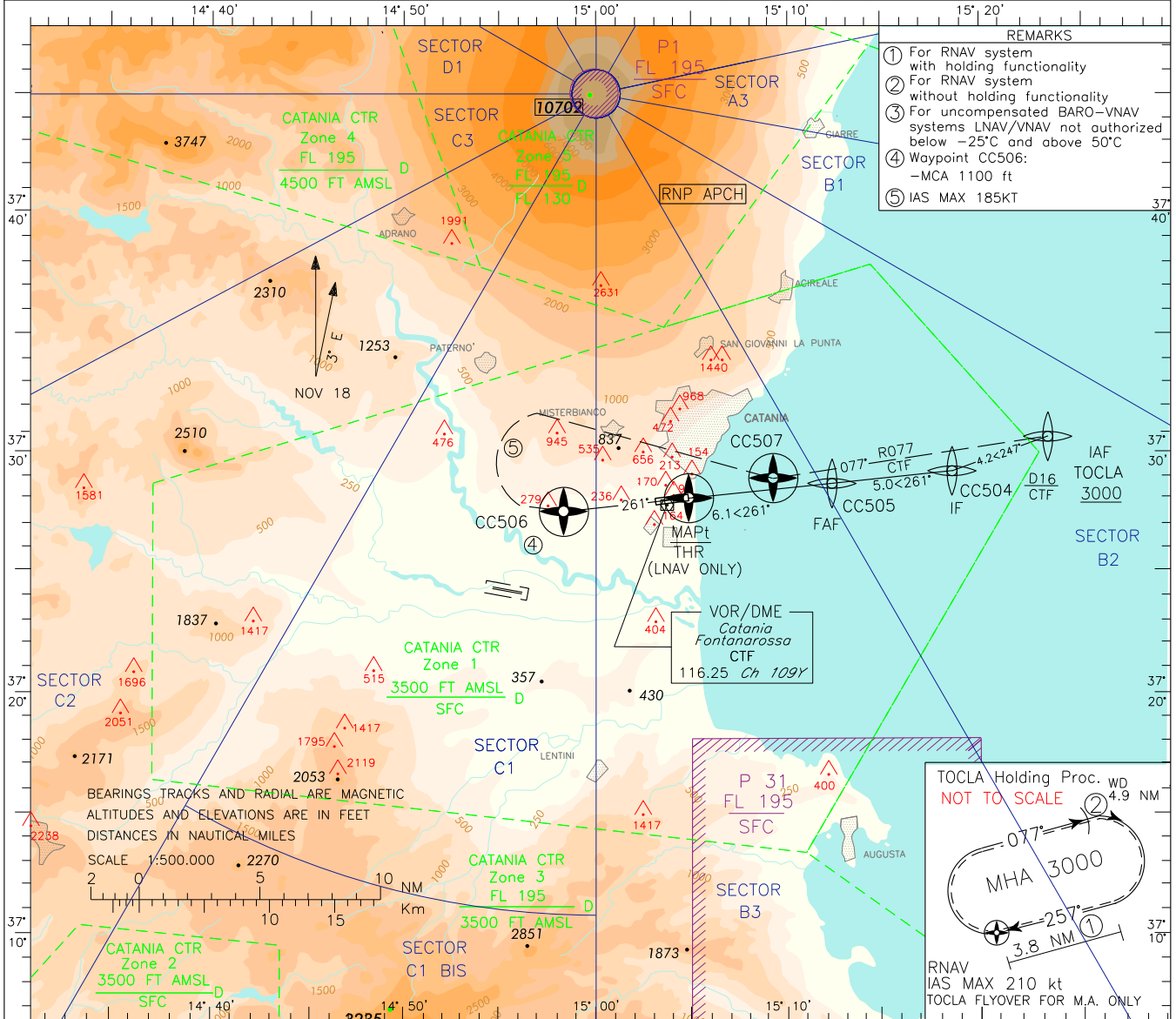
Waypoint Table Formatted according ARINC 424 standards IAP RNAV (GNSS) -Z RWY 26

WAYPOINT	LATITUDE	LONGITUDE
TOCLA	N37303805	E015233287
CC504	N37291315	E015183407
CC505	N37284221	E015121917
CC506	N37273182	E014582096
NASOM	N37255500	E014393800

DOC.8168-ED.6-2014-AMDT 7

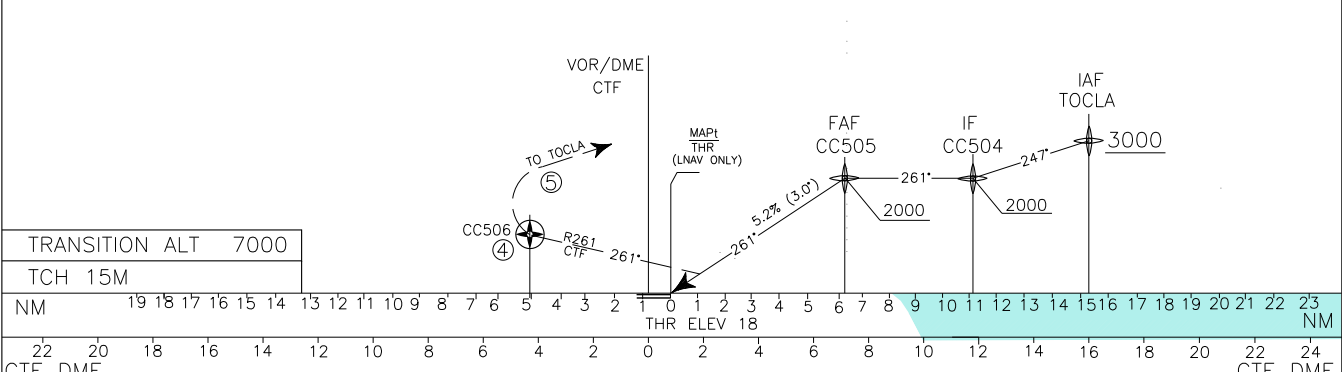
CHANGE: NEW IAP IDENTIFICATION

For operational limitations in case of volcanic ash cloud see AD 2 LICC 1-1 tab 23 and ENR 2.1.2 CATANIA CTR	APP	Catania APP/Radar	119.250	AD ELEV	L I C C	CATANIA/FONTANAROSSA
	TWR	Catania Director	(120.805)			
	ATIS	Catania TWR	118.700			
		Catania Arrival and Departure Information	127.675			
			39			RNP-Y RWY 26



- REMARKS
- For RNAV system with holding functionality
 - For RNAV system without holding functionality
 - For uncompensated BARO-VNAV systems LNAV/VNAV not authorized below -25°C and above 50°C
 - Waypoint CC506: -MCA 1100 ft
 - IAS MAX 185KT

MISSED APPROACH : *Proceed on RWY heading (TR 261°) climbing to 3000ft. At CC506 (R262/4.3NM CTF VOR/DME) to be reached at 1100 ft or above, turn right (IAS MAX 185 kt) direct to CC507(R077/4.4 NM CTF VOR/DME) then join and follow TR 077°(R077 CTF VOR/DME) bound to TOCLA (R077/16 NM CTF VOR/DME) holding pattern.
 * CTF VOR/DME indication provided as backup in case of loss of GNSS signal during missed approach.



TRANSITION ALT 7000		TCH 15M																																											
NM		19	18	17	16	15	14	13	12	11	10	9	8	7	6	5	4	3	2	1	0	1	2	3	4	5	6	7	8	9	10	11	12	13	14	15	16	17	18	19	20	21	22	23	NM
CTF DME		22	20	18	16	14	12	10	8	6	4	2	0	2	4	6	8	10	12	14	16	18	20	22	24	CTF DME																			
STRAIGHT IN APPROACH	OCA (OCH)	A	B	C	D	(6) REMARK: Circling procedure allowed South of RWY only.	GS	FT per MIN	DIST	THR	ALT(HGT)	MNM SECT ALT 25NM ARP																																	
	LNAV/VNAV (3)	340 (322)	400 (382)	460 (442)	470 (452)		80	420	6	1985(1967)																																			
CIRCLING (6)	LNAV	530 (520)				NOT ALLOWED	100	530	5	1665(1647)																																			
		700 (670)	790 (760)	820 (790)	120		630	4	1345(1327)																																				
					140		740	3	1025(1007)																																				
					160		850	2	710(692)																																				
				180	950	1.4	530(512)																																						

TABULAR DESCRIPTION

RNP - Y RWY 26

Path Terminator	Waypoint Identifier	Fly Over	Track °M(°T)	Distance (NM)	Turn Direction	Altitude (ft)	Speed Limit (Kt)	VPA/TCH	Distance from THR	Navigation Specification	Remarks
IF	TOCLA	-	-	-	-	+3000	-	-	15.2	RNAV 1	-
TF	CC504	-	247° (250.3°)	4.2	-	+2000	-	-	11.1	RNAV1	-
TF	CC505	-	261° (264.1°)	5.0	-	+2000	-	-	6.1	RNAV 1	-
TF	THR RWY 26	Y	261° (264.0°)	6.1	-	+68	-	-3°/ 15M	-	RNP APCH	MAPt (LNAV only)
TF	CC506	Y	261° (263.9°)	-	-	+1100	-	-	-	RNP APCH	-
DF	CC507	Y	-	-	R	-	185	-	-	RNP APCH	-
CF	TOCLA	Y	077° (080.3°)	-	-	+3000	-	-	-	RNP APCH	-

Path Terminator	Waypoint Identifier	Inbound Track °M(°T)	Turn Direction	Altitude Constraint	Speed Limit KIAS	D (NM)*	WD (NM)**	TYPE
HM	TOCLA	257°(260.3°)	R	+3000	210	3.8	4.9	RNAV1

(*): For RNAV system with holding functionality.

(**): For RNAV system without holding functionality.

Waypoint Table Formatted according ARINC 424 standards IAP RNAV (GNSS) - Y RWY 26

WAYPOINT	LATITUDE	LONGITUDE
TOCLA	N37303805	E015233287
CC504	N37291315	E015183407
CC505	N37284221	E015121917
CC506	N37273182	E014582096
CC507	N37283852	E015091455