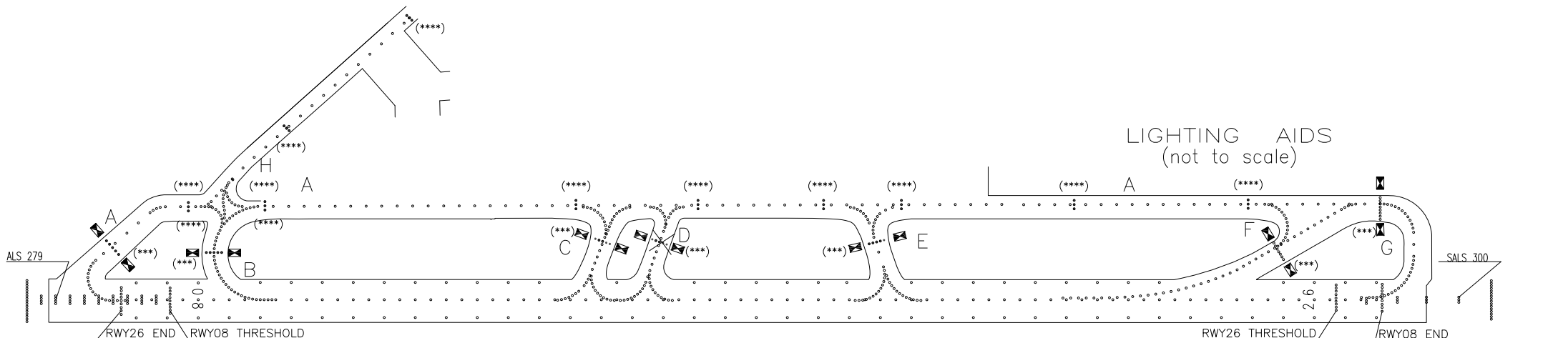
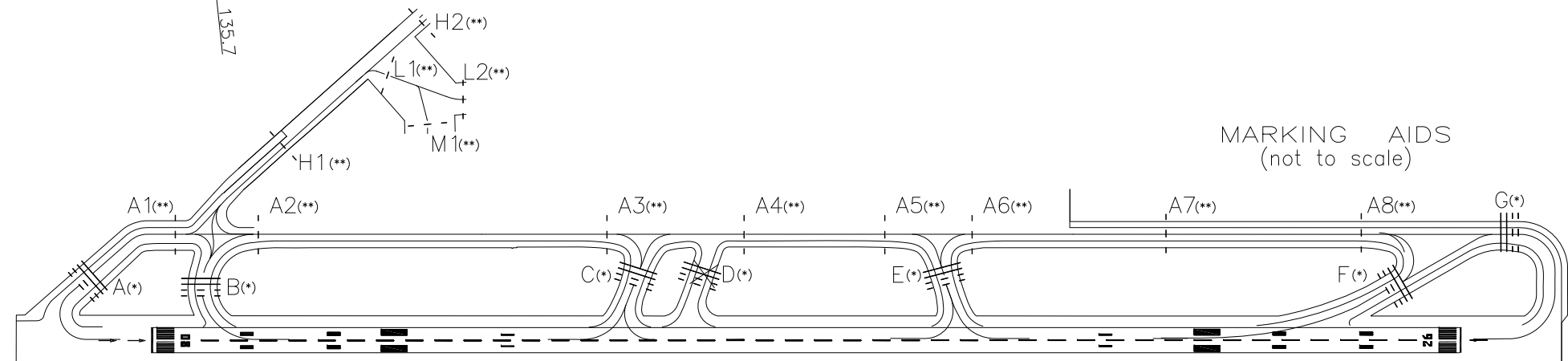
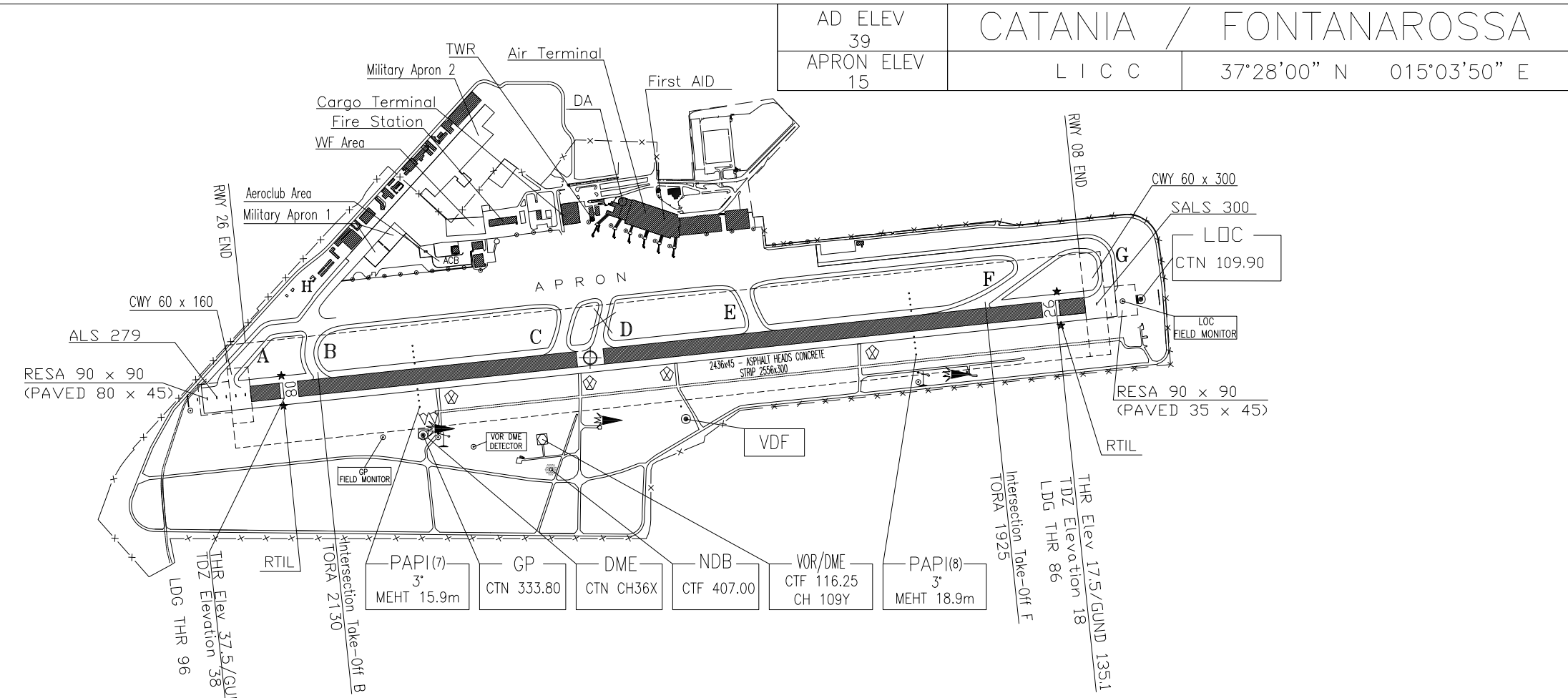


Bearings are magnetic		TWR 118.700	
Distances in metres		GND 129.725	
Elevation in ft AMSL		ATIS 127.675	
Coordinates WGS84		bearing strength	
RWY	QFU	THR	PCN 99/F/A/W/T
08	082°	N 37°27'56.59" E 015°03'13.66"	
26	262°	N 37°28'04.27" E 015°04'44.90"	

AD ELEV 39	CATANIA / FONTANAROSSA	
APRON ELEV 15	L I C C	37°28'00" N 015°03'50" E

TWY IDENT	WIDTH	bearing strength
A	23	PCN 92/F/B/W/T
H	20	PCN 85/F/A/W/T
B	27	PCN 54/F/B/W/T
C	26	PCN 100/F/A/W/T
D	20	PCN 81/F/A/W/T
E	26	PCN 95/F/A/W/T
F	23	PCN 84/F/B/W/T
G	26	PCN 103/F/B/W/T



VAR 2° E - 2005.0

Annual rate of change 4'E
Anomaly zone

metres 0 200 400 600 800
feet 0 600 1200 1800 2400

- LEGEND:
- 1) [Symbol] NO ENTRY SIGN
 - 2) [Symbol] Service Road not lighted and not usable by ACFT
 - 3) (*) RUNWAY HOLDING POSITION
 - 4) (**) INTERMEDIATE HOLDING POSITION
 - 5) (***) STOP BARS - NOT AVBL
 - 6) (****) YELLOW LIGHTS
 - 7) Left COV reduced to 5° and not usable last 600m before THR08
 - 8) Not usable last 450m before THR26

- PROVISIONS:
- a) Turn back manoeuvres must be performed on RWY heads
 - b) In order to avoid damage due to jet blast or slip stream pilots are requested to taxi with minimum thrust.

CHANGE: BOX LEGEND UPDATED

TWR 118.700	AD ELEV 39
GROUND 129.725	APRON ELEV 15
ATIS 127.675	

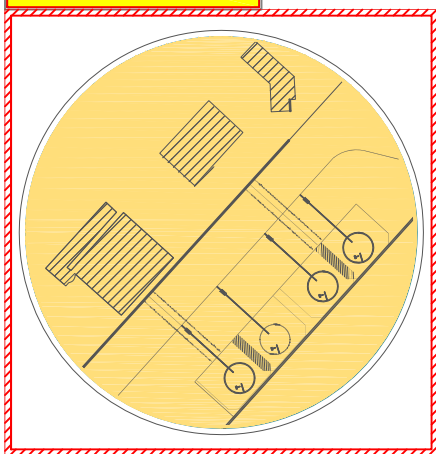
CATANIA / FONTANAROSSA	
L I C C	37°28'00" N 015°03'50" E

VAR 2° E -2005.0

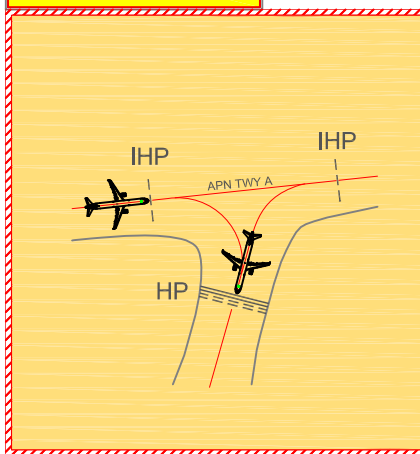
Annual rate of change 4'E
Anomaly zone

metres: 0, 200, 400, 600, 800
feet: 0, 600, 1200, 1800, 2400

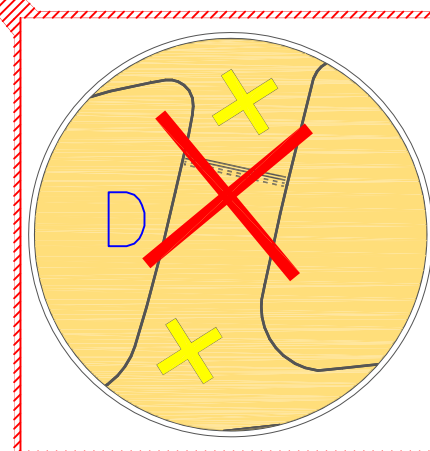
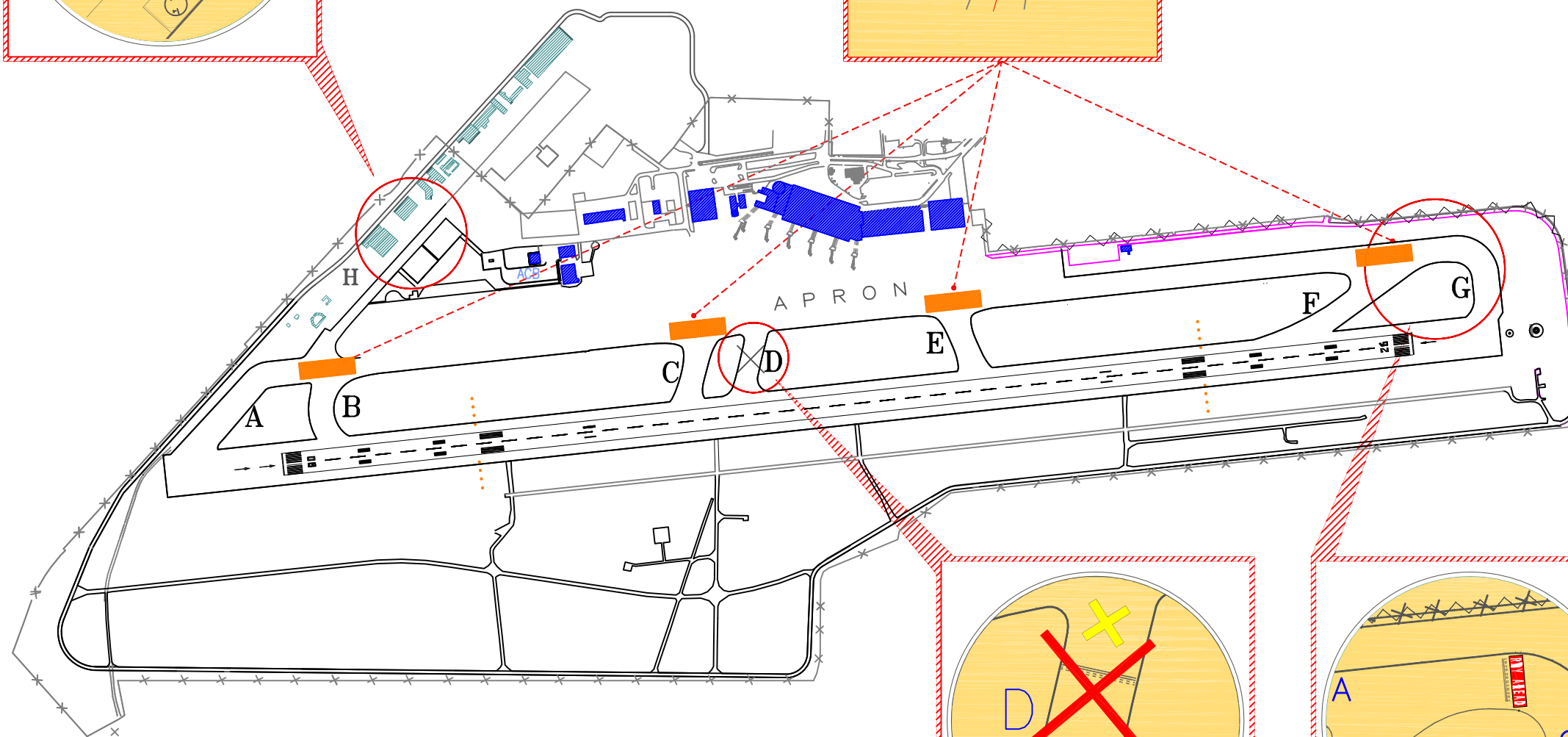
HOT SPOT 1



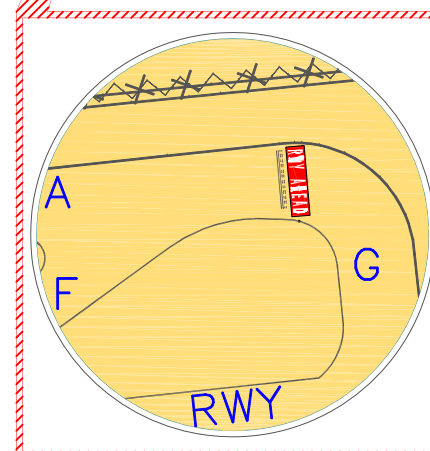
HOT SPOT 2



CHANGE: UPDATED CHART



HOT SPOT 3



HOT SPOT 4

HOT SPOT LEGEND

HOT SPOT 1	Taxi with caution due to tow aircraft crossing APN TWY H
HOT SPOT 2	Aircraft taxiing on APN TWY A are not separated by ACFT of code higher than "A" (ICAO Aerodrome Reference Code), positioned on the RHP of the TWYs B-C-E-F
HOT SPOT 3	TWY D closed
HOT SPOT 4	Runway holding position G far away from the runway

Bearings are magnetic		TWR	AD ELEV
Distances in metres		118.700	39
Elevation in ft AMSL		GND	APRON ELEV
Coordinates WGS84		129.725	15
		ATIS	
		127.675	
APRON			
lighting	bearing	strength	
Edge: Blue	Surface: 179.900 mq		
	-Stands 333, 334, 335, 336		
	Concrete - PCN70/R/C/W/T		
	-Stands FROM 318 TO 332		
	Concrete - PCN70/R/D/W/T		
	-Stands FROM 300 TO 317		
	Concrete - PCN70/R/D/W/T		
	-Stands 337, 338, 339		
	Concrete - PCN70/R/B/W/T		
	-Stands FROM 100 TO 104		
	Concrete - PCN28/R/B/W/T		

- PROVISIONS:
- 1) Local provisions for general aviation aircraft and helicopters are detailed on AD 2 TABLE 20.7
 - 2) Due to presence of personnel and vehicles in Apron and in order to avoid damage due to jet blast or slip stream, pilots are requested to taxi with minimum thrust maintaining strictly yellow markings
 - 3) Taxi-out manoeuvres from stands subject to Apron operation service (AOS) procedures
 - 4) Self manoeuvres AVBL for stands 300-302-317-323-337-338-339 under marshalling supervision and only if tow bar is not provided by handlers
 - 5) Stands 100-101-102-103-104 AVBL only HJ

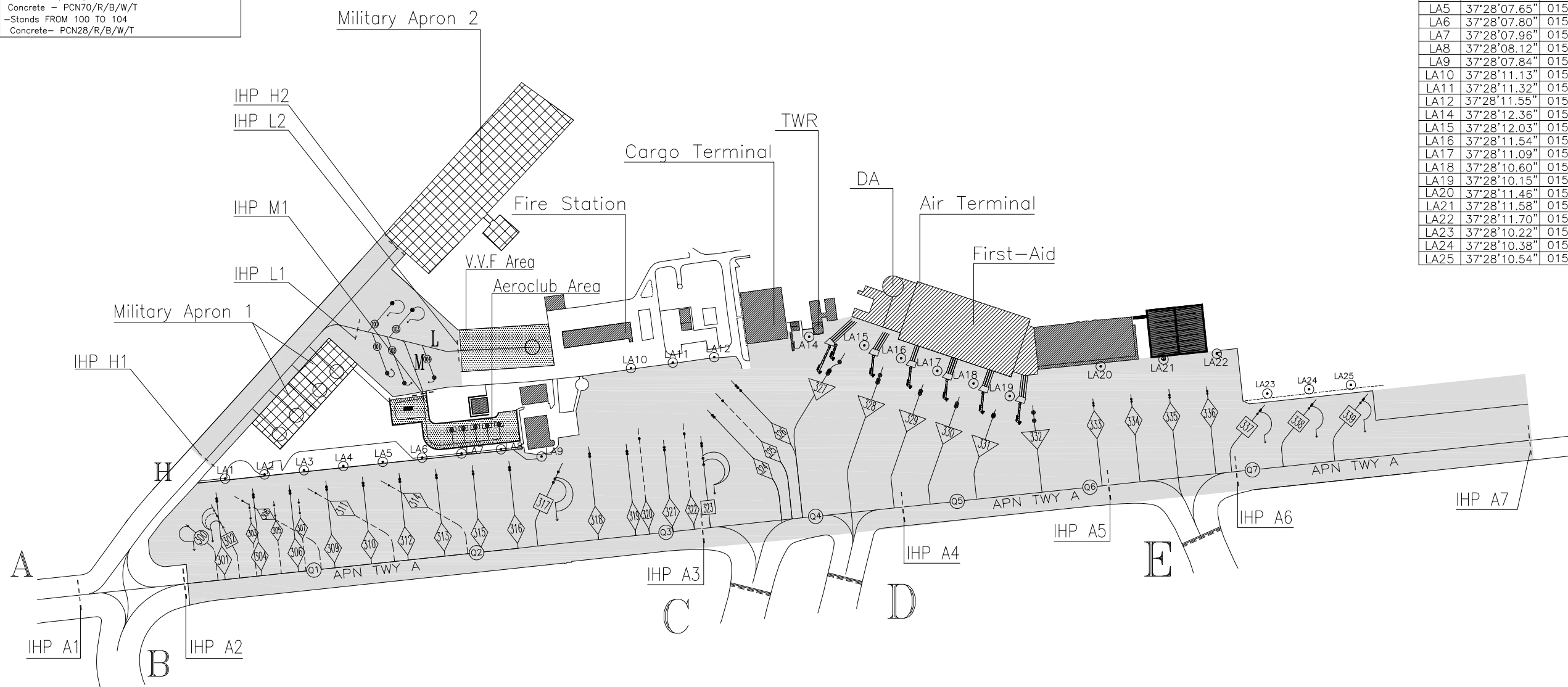
CATANIA / FONTANAROSSA

L I C C

37°28'00" N 015°03'50" E

Lattice TWRs COORD. (WGS 84)		
AIRSIDE	N	E
LA1	37°28'07.11"	015°03'21.80"
LA2	37°28'07.17"	015°03'23.68"
LA3	37°28'07.33"	015°03'25.56"
LA4	37°28'07.49"	015°03'27.45"
LA5	37°28'07.65"	015°03'29.33"
LA6	37°28'07.80"	015°03'31.21"
LA7	37°28'07.96"	015°03'33.09"
LA8	37°28'08.12"	015°03'34.98"
LA9	37°28'07.84"	015°03'36.90"
LA10	37°28'11.13"	015°03'41.23"
LA11	37°28'11.32"	015°03'43.22"
LA12	37°28'11.55"	015°03'45.22"
LA14	37°28'12.36"	015°03'49.74"
LA15	37°28'12.03"	015°03'52.39"
LA16	37°28'11.54"	015°03'54.14"
LA17	37°28'11.09"	015°03'55.85"
LA18	37°28'10.60"	015°03'57.60"
LA19	37°28'10.15"	015°03'59.35"
LA20	37°28'11.46"	015°04'03.78"
LA21	37°28'11.58"	015°04'06.78"
LA22	37°28'11.70"	015°04'09.12"
LA23	37°28'10.22"	015°04'11.58"
LA24	37°28'10.38"	015°04'13.57"
LA25	37°28'10.54"	015°04'15.57"

CHANGE: Updated chart



POINTS ON PARKING AREA			POINTS ON PARKING AREA			POINTS ON PARKING AREA			POINTS ON PARKING AREA			POINTS ON PARKING AREA			POINTS ON PARKING AREA			POINTS ON PARKING AREA		
COORDS	N	E	COORDS	N	E	COORDS	N	E	COORDS	N	E	COORDS	N	E	COORDS	N	E	COORDS	N	E
300	37°28'05.20"	015°03'20.01"	311	37°28'06.46"	015°03'26.10"	318	37°28'07.94"	015°03'39.19"	324	37°28'09.41"	015°03'45.06"	332	37°28'09.51"	015°04'00.40"	335	37°28'10.18"	015°04'06.97"	100	37°28'13.68"	015°03'29.77"
301	37°28'06.24"	015°03'21.37"	312	37°28'06.98"	015°03'30.12"	319	37°28'07.85"	015°03'39.20"	325	37°28'09.34"	015°03'45.14"	333	37°28'09.20"	015°04'00.44"	336	37°28'10.09"	015°04'06.98"	101	37°28'11.02"	015°03'29.53"
	37°28'06.15"	015°03'21.39"	313	37°28'06.89"	015°03'30.13"	320	37°28'07.94"	015°03'40.99"	326	37°28'09.86"	015°03'45.55"	334	37°28'09.84"	015°04'03.35"	337	37°28'10.34"	015°04'08.78"	102	37°28'10.64"	015°03'30.35"
	37°28'05.79"	015°03'21.26"	314	37°28'07.13"	015°03'31.87"	321	37°28'07.94"	015°03'40.99"	327	37°28'10.53"	015°03'46.19"	331	37°28'09.75"	015°03'56.71"	338	37°28'10.24"	015°04'08.80"	103	37°28'13.43"	015°03'30.73"
	37°28'05.59"	015°03'21.39"	315	37°28'07.03"	015°03'31.88"	322	37°28'08.52"	015°03'41.57"	328	37°28'10.46"	015°03'46.28"	330	37°28'09.41"	015°03'58.50"	339	37°28'09.61"	015°04'11.27"	104	37°28'10.85"	015°03'31.78"
	37°28'05.14"	015°03'21.89"	316	37°28'07.03"	015°03'31.88"	323	37°28'08.19"	015°03'42.71"	329	37°28'10.34"	015°03'46.42"	332	37°28'09.37"	015°03'58.48"	340	37°28'09.56"	015°04'11.22"			
	37°28'05.89"	015°03'22.95"	317	37°28'07.98"	015°03'33.62"	324	37°28'08.84"	015°03'42.77"	330	37°28'11.41"	015°03'51.15"	333	37°28'09.94"	015°04'05.17"	341	37°28'09.45"	015°04'11.11"			
	37°28'05.50"	015°03'23.00"	318	37°28'07.18"	015°03'33.63"	325	37°28'08.71"	015°03'43.72"	331	37°28'11.10"	015°03'50.66"	334	37°28'10.03"	015°04'05.16"	342	37°28'09.81"	015°04'13.73"			
	37°28'06.39"	015°03'23.13"	319	37°28'07.43"	015°03'35.37"	326	37°28'08.34"	015°03'44.54"	332	37°28'11.09"	015°03'50.65"	335	37°28'09.94"	015°04'05.17"	343	37°28'09.61"	015°04'11.27"			
	37°28'06.30"	015°03'23.14"	320	37°28'07.53"	015°03'35.38"	327	37°28'08.24"	015°03'44.55"	333	37°28'11.00"	015°03'50.58"	336	37°28'09.56"	015°04'11.22"	344	37°28'09.56"	015°04'11.22"			
	37°28'05.99"	015°03'24.12"	321	37°28'07.26"	015°03'37.70"	328	37°28'07.77"	015°03'44.64"	334	37°28'10.93"	015°03'53.08"	337	37°28'09.81"	015°04'13.68"	345	37°28'09.81"	015°04'13.68"			
	37°28'05.60"	015°03'24.18"	322	37°28'06.99"	015°03'37.54"	329	37°28'07.77"	015°03'44.64"	335	37°28'10.75"	015°03'53.00"	338	37°28'09.65"	015°04'13.68"	346	37°28'09.65"	015°04'13.68"			
	37°28'06.54"	015°03'24.89"	323	37°28'06.86"	015°03'37.46"	330	37°28'07.53"	015°03'44.65"	336	37°28'10.65"	015°03'52.96"	339	37°28'09.97"	015°04'16.18"	347	37°28'09.97"	015°04'16.18"			
	37°28'06.45"	015°03'24.89"																		
	37°28'06.09"	015°03'25.30"																		
	37°28'05.70"	015°03'25.35"																		
	37°28'06.16"	015°03'22.66"																		
	37°28'06.69"	015°03'26.62"																		
	37°28'06.59"	015°03'26.64"																		
	37°28'06.84"	015°03'28.37"																		
	37°28'06.74"	015°03'28.39"																		

- LEGEND:
- 1) Aeroclub Stands
 - 2) PUSH BACK
 - 3) ENGINE START POINT
 - 4) DOCKING SYSTEM
 - 5) PUSH BACK/SELF MANOEUVRING

MILITARY APRON

APRON

metres 0 50 100 150 200
feet 0 150 300 450 600

VAR 2° E -2005.0
Annual rate of change 4"E
Anomaly zone