



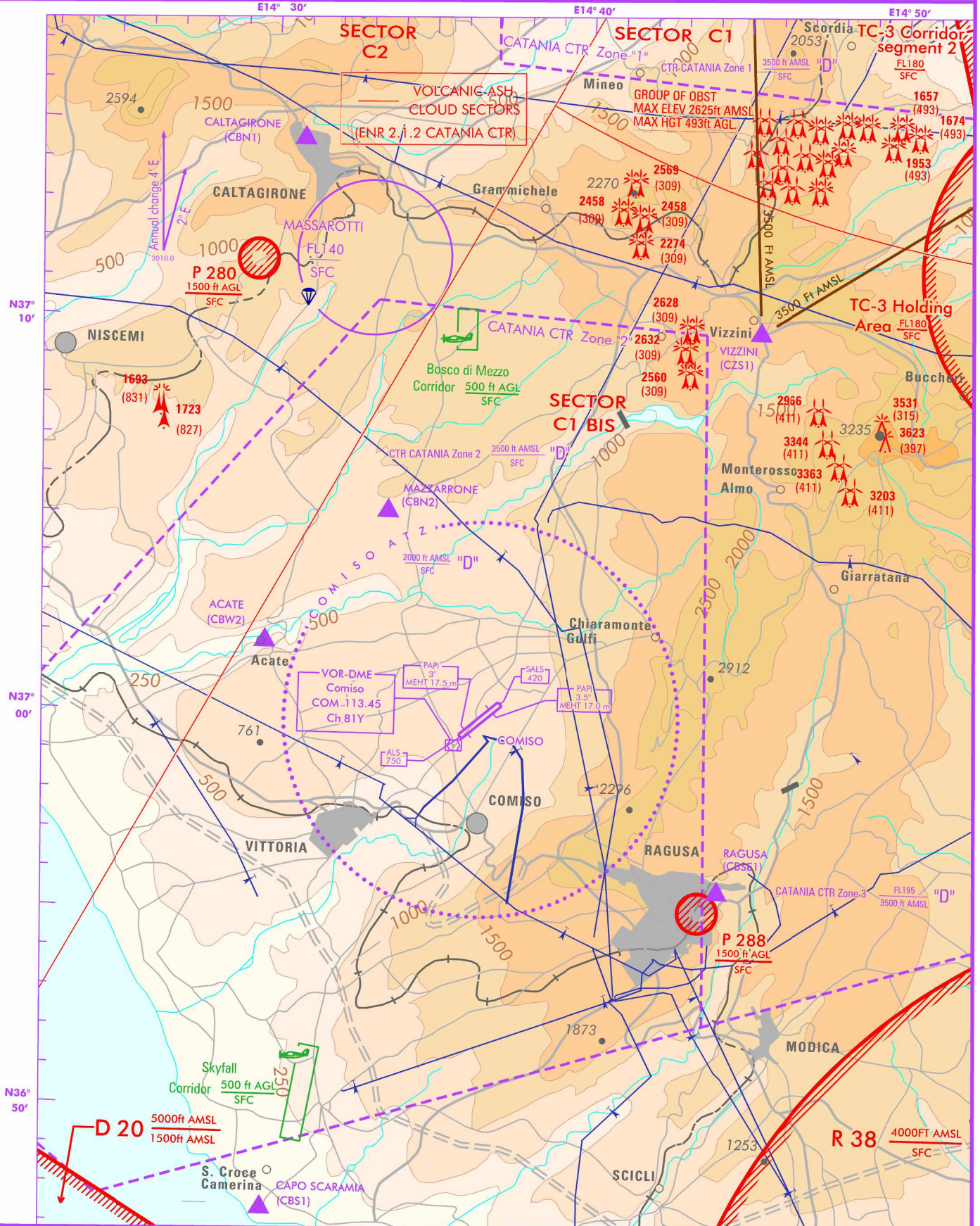
FIS	Roma Info	128.800	129.575
APP	Catania Approach	119.250	134.125
TWR	Comiso Tower	125.275	

AD ELEV
756

L
I
C
B

COMISO

CHANGE: REMARK BOX UPDATED

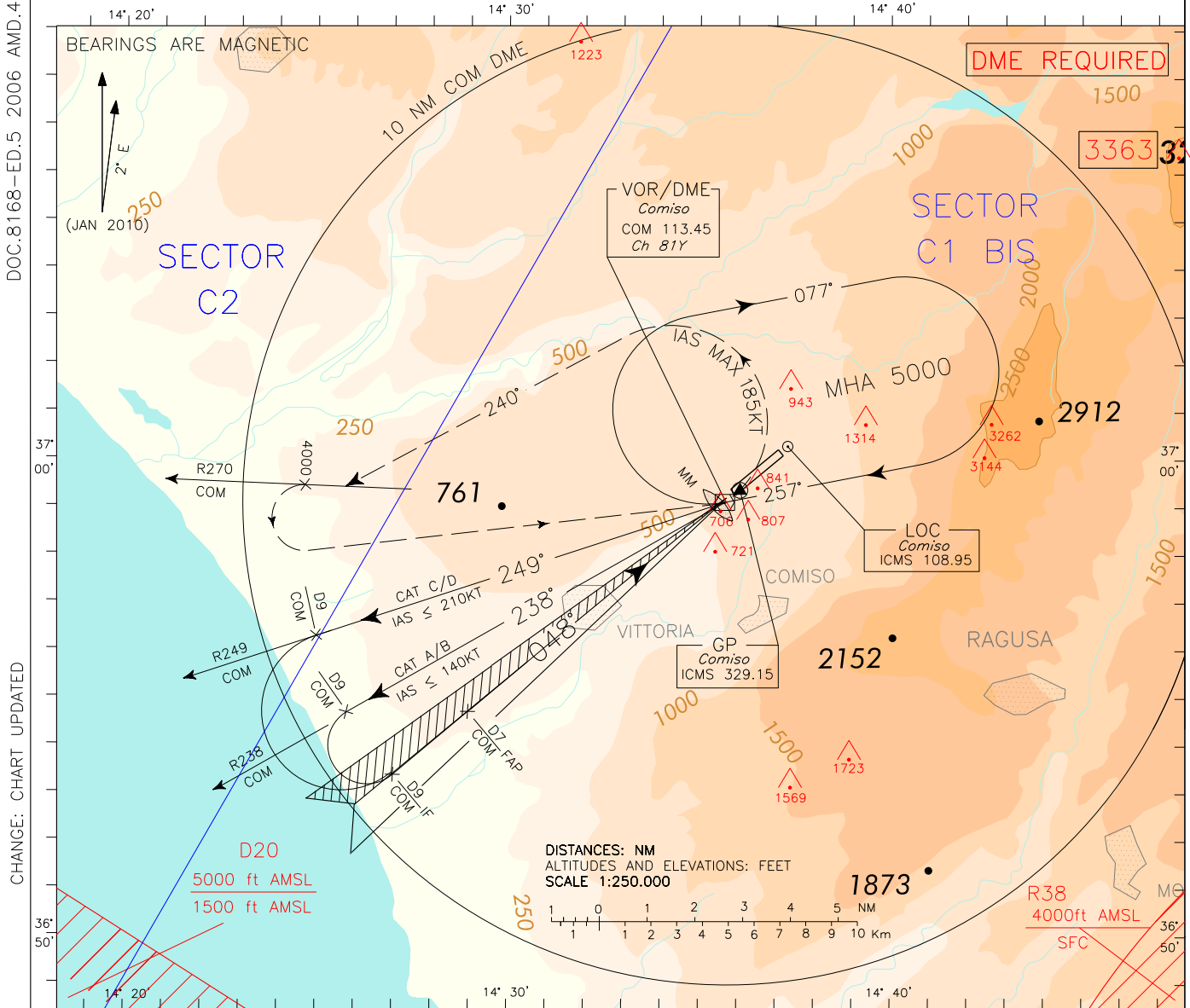


AIRSPACE CLASSIFICATION (See AIP-Italia ENR 1.4)

TRANSITION ALT 7000 ft

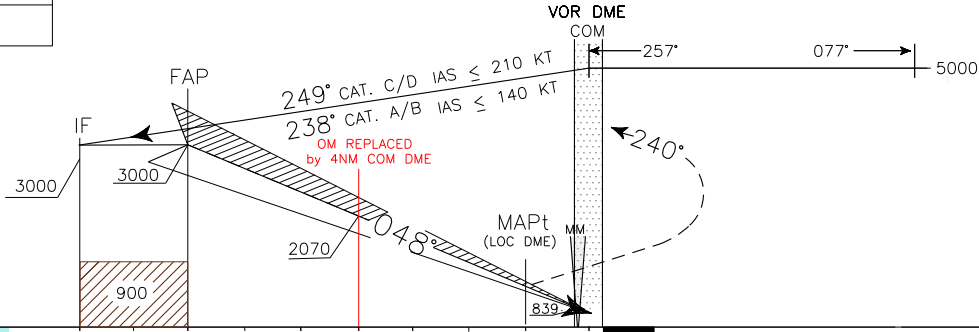
Bearings are magnetic.
ELEV and ALT in ft.

For operational limitations in case of volcanic ash cloud see AD 2 LICB 1-1 tab 23 and ENR 2.1.2 CATANIA CTR	APP <i>Catania APP</i>	119.250	AD ELEV	LICB	COMISO ILS RWY 05
	TWR <i>Comiso TWR</i>	125.275	756		



TRANSITION ALT 7000
 ILS RDH 15M
 GP 3°

MISSED APPROACH: As soon as possible turn left (IAS MAX 185KT) on TR 240°, to join R270 COM VOR, climbing to 5000FT. At 4000FT (not later than D10 COM DME) turn left to COM VOR to be reached at 5000FT.



COM DME	D12	D11	D10	D9	D8	D7	D6	D5	D4	D3	D2	D1	0	THR	ELEV 661	COM DME								
NM	13	12	11	10	9	8	7	6	5	4	3	2	1	0	1	2	3	4	5	6	7	8	9	NM

STRAIGHT IN APPROACH	OCA (OCH)	A B C D				GS	FT PER MIN	D7-OM	OM-THR	COM DME	ALT (HGT)	MNM SECT ALT COM VOR
		1041 (380)	1051 (390)	1059 (398)	1070 (409)							
ILS						80	425	2 : 18	3 : 13	5 DME	2388 (1727)	
LOC DME		1100 (439)				100	531	1 : 47	2 : 34	4 DME	2070 (1409)	
						120	637	1 : 30	2 : 08	3 DME	1750 (1089)	
						140	743	1 : 17	1 : 50	2 DME	1432 (771)	
						160	849	1 : 07	1 : 36	1 DME	1113 (452)	
(X) CIRCLING		1400(644)	1650(894)	2050(1294)	2450(1694)							



FIX/POINT	Coordinates (WGS84)
IAF	36°59'06.3" N 14°35'40.7" E
IF	36°53'22.1" N 14°27'00.8" E
FAP	36°54'41.9"N 14°28'59.6"E

For operational limitations in case of volcanic ash cloud see AD 2 LICB 1-1 tab 23 and ENR 2.1.2 CATANIA CTR

APP *Catania APP* 119.250
 TWR *Comiso TWR* 125.275

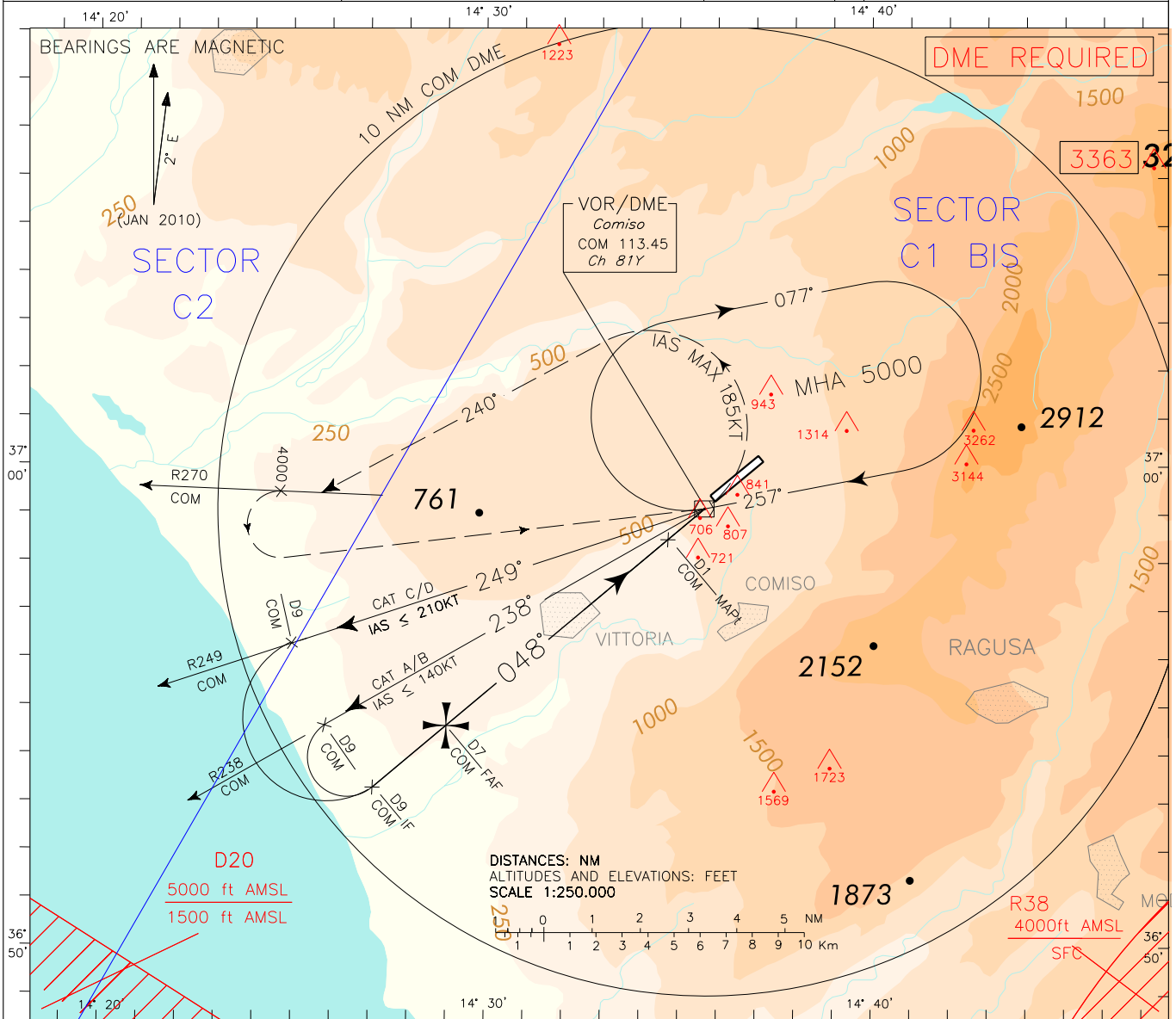
AD ELEV 756

L
I
C
B

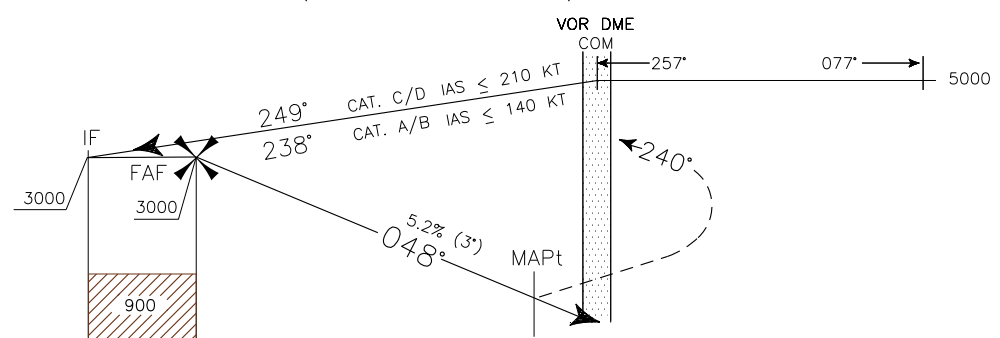
COMISO
 VOR-Z RWY 05

DOC.8168-ED.5 2006 AMD.4

CHANGE: CHART UPDATED



TRANSITION ALT 7000 MISSED APPROACH: As soon as possible turn left (IAS MAX 185KT) on TR 240°, to join R270 COM VOR, climbing to 5000FT. At 4000FT (not later than D10 COM DME) turn left to COM VOR to be reached at 5000FT.



COM DME	D12	D11	D10	D9	D8	D7	D6	D5	D4	D3	D2	D1	0	THR ELEV 661	COM DME									
NM	13	12	11	10	9	8	7	6	5	4	3	2	1	0	1	2	3	4	5	6	7	8	9	NM

STRAIGHT IN APPROACH	OCA (OCH)				(*) CIRCLING SECTOR CIRCLING SECTOR	GS	FT PER MIN	FAF-MAPt		MAPt-THR		COM DME	ALT (HGT)		MNM SECT ALT COM VOR
	A	B	C	D				6 NM	1.26 NM	6 DME	2700 (2039)				
VORDME	1100 (439)				ONLY NORTH OF RWY	80	425	4 : 30	0 : 57	5 DME	2385 (1724)				
						100	531	3 : 36	0 : 45	4 DME	2070 (1409)				
						120	637	3 : 00	0 : 38	3 DME	1750 (1089)				
						140	743	2 : 34	0 : 32	2 DME	1430 (769)				
(*) CIRCLING	1400(644)	1650(894)	2050(1294)	2450(1694)		160	849	2 : 15	0 : 28	1 DME	1115 (454)				

FIX/POINT	Coordinates (WGS84)
IAF	36°59'06.3" N 14°35'40.7" E
IF	36°53'20.0" N 14°27'03.0" E
FAF	36°54'37.0"N 14°28'57.8"E
MAPt	36°58'27.7" N 14°34'42.8" E

For operational limitations in case of volcanic ash cloud see AD 2 LICB 1-1 tab 23 and ENR 2.1.2 CATANIA CTR

APP *Catania APP* 119.250
TWR *Comiso TWR* 125.275

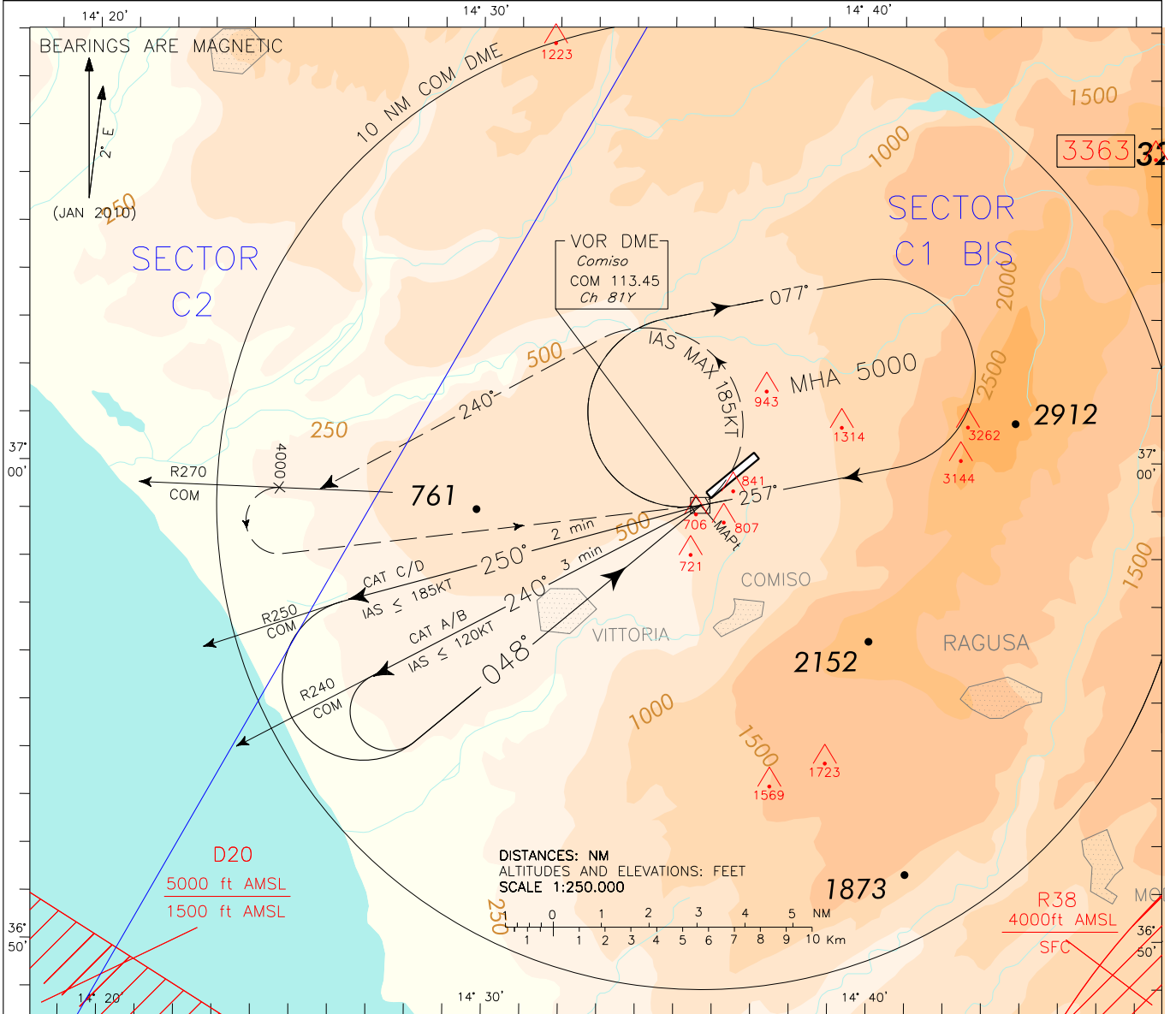
AD ELEV
756

L
I
C
B

COMISO
VOR-Y RWY 05

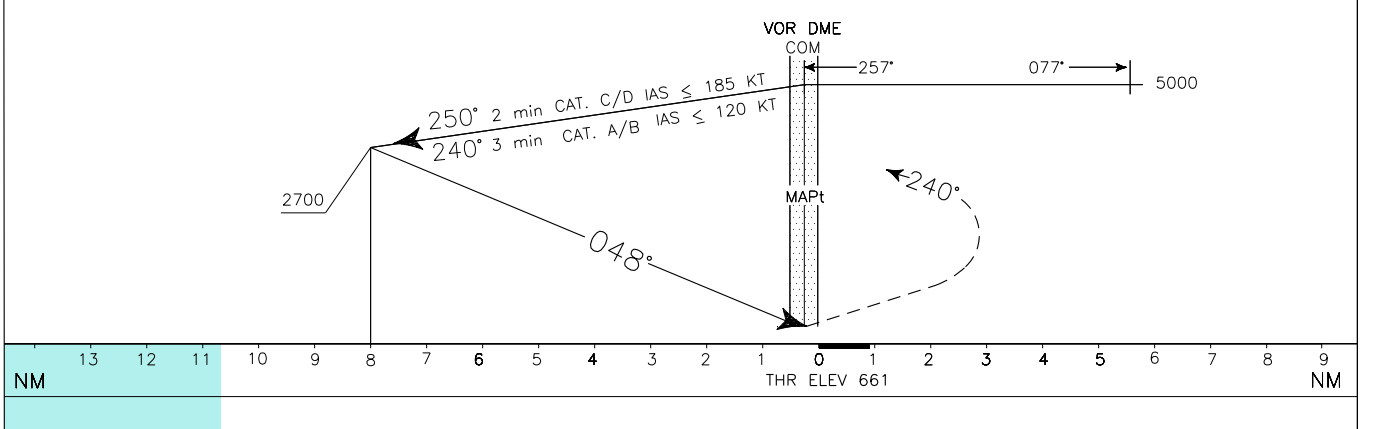
DOC.8168-ED.5 2006 AMD.4


CHANGE: CHART UPDATED

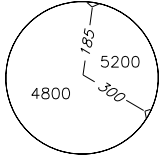


TRANSITION ALT 7000

MISSED APPROACH: As soon as possible, turn left (IAS MAX 185KT) on TR 240°, to intercept and follow R270 COM VOR, climbing to 5000FT . At 4000FT turn left to COM VOR to be reached at 5000FT.



OCA (OCH)		A	B	C	D	(*) CIRCLING SECTOR  ONLY NORTH OF RWY	GS	FT PER MIN	MNM SECT ALT COM VOR		
STRAIGHT IN APPROACH	VOR	1150 (489)									
							80	425			
							100	531			
							120	637			
							140	743			
(*) CIRCLING	1400(644)	1650(894)	2050(1294)	2450(1694)		160	849				



FIX/POINT	Coordinates (WGS84)
IAF	36°59'06.3" N 14°35'40.7" E
MAPt	36°59'06.3" N 14°35'40.7" E