

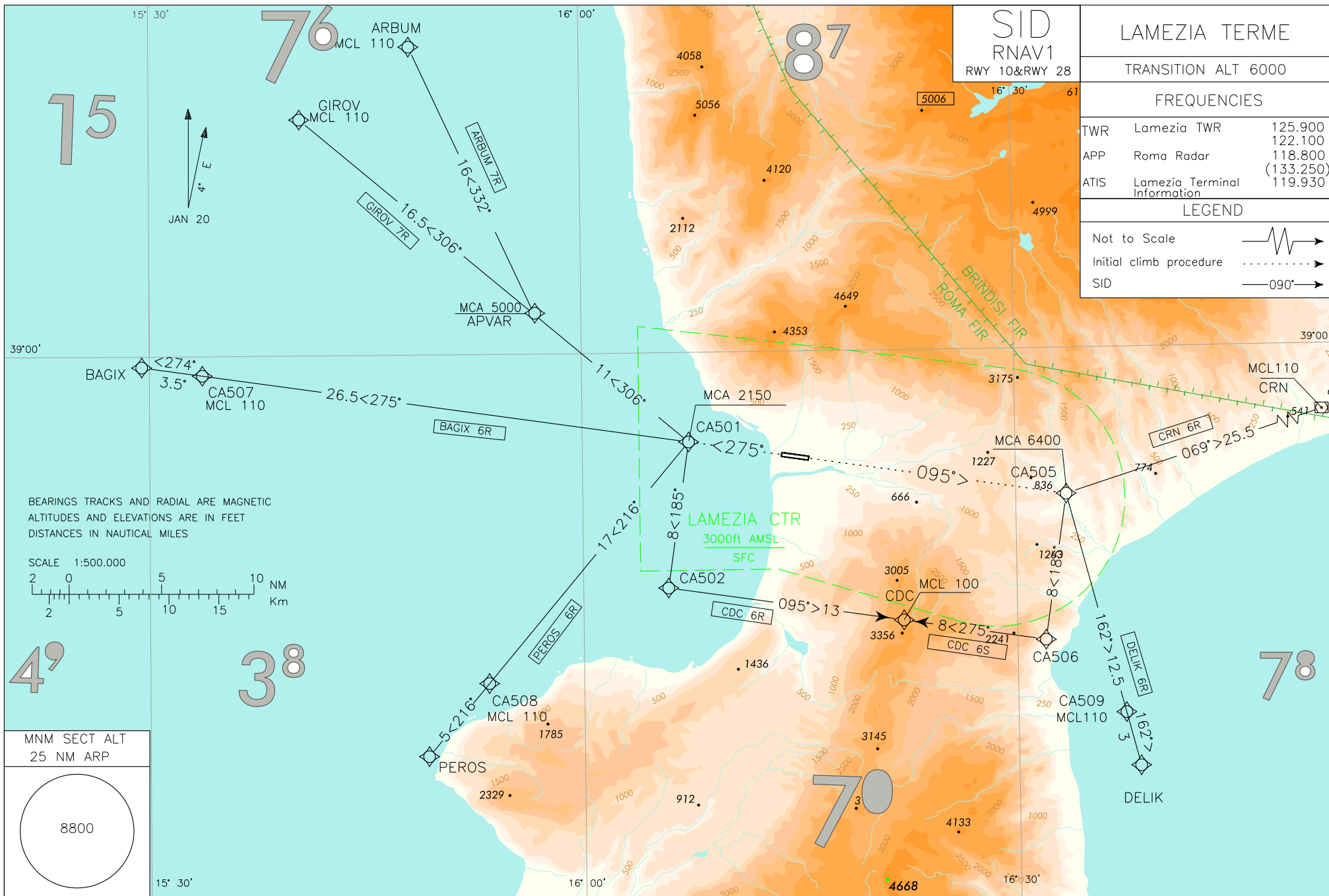
CHANGE: MAG VAR AND BOX FREQ UPDATED

ENAV - Roma

AIRAC effective date 02 DEC 2021 (A11/21)

AIP - Italia

AD 2 LICIA 6-1



LAMEZIA TERME

TRANSITION ALT 6000

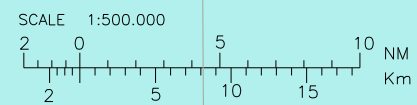
FREQUENCIES

TWR	Lamezia TWR	125.900
		122.100
APP	Roma Radar	118.800
		(133.250)
ATIS	Lamezia Terminal Information	119.930

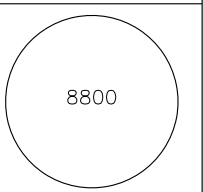
LEGEND

Not to Scale	
Initial climb procedure	
SID	

BEARINGS TRACKS AND RADIAL ARE MAGNETIC
ALTITUDES AND ELEVATIONS ARE IN FEET
DISTANCES IN NAUTICAL MILES



MNM SECT ALT
25 NM ARP



SID RNAV1 RWY 28**REMARK**

Minimum climb gradient:

- 7% until leaving 5000 ft.
- 8.2% for SID PEROS 5R

Close-in obstacles penetrating OIS 2.5% exist but were not considered for the published Procedure Design Gradient

ARBUM 7R

Path Terminator	Waypoint Identifier	Fly Over	Course °M(°T)	Magnetic Variation	Distance (NM)	Turn Direction	Altitude (ft)	Speed Limit (kt)	Navigation Specification
CA	-	-	275 (278.5)	4°	-	-	+500	-	RNAV1
DF	CA501	-	-	-	-	-	+2150	-	RNAV1
TF	APVAR	-	306 (310.3)	-	10.8	-	+5000	-	RNAV1
TF	ARBUM	-	332 (335.3)	-	16.0	-	+FL110	-	RNAV1

GIROV 7R

Path Terminator	Waypoint Identifier	Fly Over	Course °M(°T)	Magnetic Variation	Distance (NM)	Turn Direction	Altitude (ft)	Speed Limit (kt)	Navigation Specification
CA	-	-	275 (278.5)	4°	-	-	+500	-	RNAV1
DF	CA501	-	-	-	-	-	+2150	--	RNAV1
TF	APVAR	-	306 (310.3)	-	10.8	-	+5000	-	RNAV1
TF	GIROV	-	306 (310.2)	-	16.5	-	+FL110	-	RNAV1

PEROS 6R

Path Terminator	Waypoint Identifier	Fly Over	Course °M(°T)	Magnetic Variation	Distance (NM)	Turn Direction	Altitude (ft)	Speed Limit (kt)	Navigation Specification
CA	-	-	275 (278.5)	4°	-	-	+500	-	RNAV1
DF	CA501	-	-	-	-	-	+2150	--	RNAV1
TF	CA508	-	216 (220.2)	-	16.9	-	+FL110	-	RNAV1
TF	PEROS	-	216 (220.2)	-	5.1	-	-	-	RNAV1

CDC 6R

Path Terminator	Waypoint Identifier	Fly Over	Course °M(°T)	Magnetic Variation	Distance (NM)	Turn Direction	Altitude (ft)	Speed Limit (kt)	Navigation Specification
CA	-	-	275 (278.5)	4°	-	-	+500	-	RNAV1
DF	CA501	-	-	-	-	-	+2150	--	RNAV1
TF	CA502	-	185 (188.4)	-	8.0	-	-	-	RNAV1
TF	CDC	-	095 (098.4)	-	12.9	-	+FL100	-	RNAV1

BAGIX 6R

Path Terminator	Waypoint Identifier	Fly Over	Course °M(°T)	Magnetic Variation	Distance (NM)	Turn Direction	Altitude (ft)	Speed Limit (kt)	Navigation Specification
CA	-	-	275 (278.5)	4°	-	-	+500	-	RNAV1
DF	CA501	-	-	-	-	-	+2150	--	RNAV1
TF	CA507	-	275 (278.4)	-	26.6	-	+FL110	-	RNAV1
TF	BAGIX	-	275 (278.1)	-	3.3	-	-	-	RNAV1

SID RNAV1 RWY 10**REMARK**

Minimum climb gradient:

- 7% until leaving 6500 ft.
- 7.5% until leaving TRL for SID CDC 5S and DELIK 5R

Close -in obstacles penetrating OIS 2.5% exist but were not considered for the published Procedure Design Gradient

CRN 6R

Path Terminator	Waypoint Identifier	Fly Over	Course °M(°T)	Magnetic Variation	Distance (NM)	Turn Direction	Altitude (ft)	Speed Limit (kt)	Navigation Specification
CA	-	-	095 (098.5)	4°	-	-	+500	-	RNAV1
DF	CA505	-	-	-	-	-	+6400	--	RNAV1
TF	CRN	-	069 (072.5)	-	25.7	-	+FL110	-	RNAV1

DELIK 6R

Path Terminator	Waypoint Identifier	Fly Over	Course °M(°T)	Magnetic Variation	Distance (NM)	Turn Direction	Altitude (ft)	Speed Limit (kt)	Navigation Specification
CA	-	-	095 (098.5)	4°	-	-	+500	-	RNAV1
DF	CA505	-	-	-	-	-	+6400	--	RNAV1
TF	CA509	-	162 (165.4)	-	12.3	-	+FL110	-	RNAV1
TF	DELIK	-	162 (165.5)	-	3.0	-	-	-	RNAV1

CDC 6S

Path Terminator	Waypoint Identifier	Fly Over	Course °M(°T)	Magnetic Variation	Distance (NM)	Turn Direction	Altitude (ft)	Speed Limit (kt)	Navigation Specification
CA	-	-	095 (098.5)	4°	-	-	+500	-	RNAV1
DF	CA505	-	-	-	-	-	+6400	--	RNAV1
TF	CA506	-	185 (188.7)	-	8.0	-	-	-	RNAV1
TF	CDC	-	275 (278.7)	-	7.8	-	+FL100	-	RNAV1

WAYPOINT LIST

Waypoint Identifier	Coordinates
CA501	38°55'09.3" N 016°07'22.6" E
CA502	38°47'15.2" N 016°05'52.9" E
CA505	38°52'05.0" N 016°33'29.9" E
CA506	38°44'11.2" N 016°31'57.4" E
CA507	38°58'57.4"N 015°33'41.7"E
CA508	38°42'11.3"N 015°53' 26.6"E
CA509	38°40'11.2"N 016°37' 26.5"E

Intenzionalmente bianca

Intentionally left blank

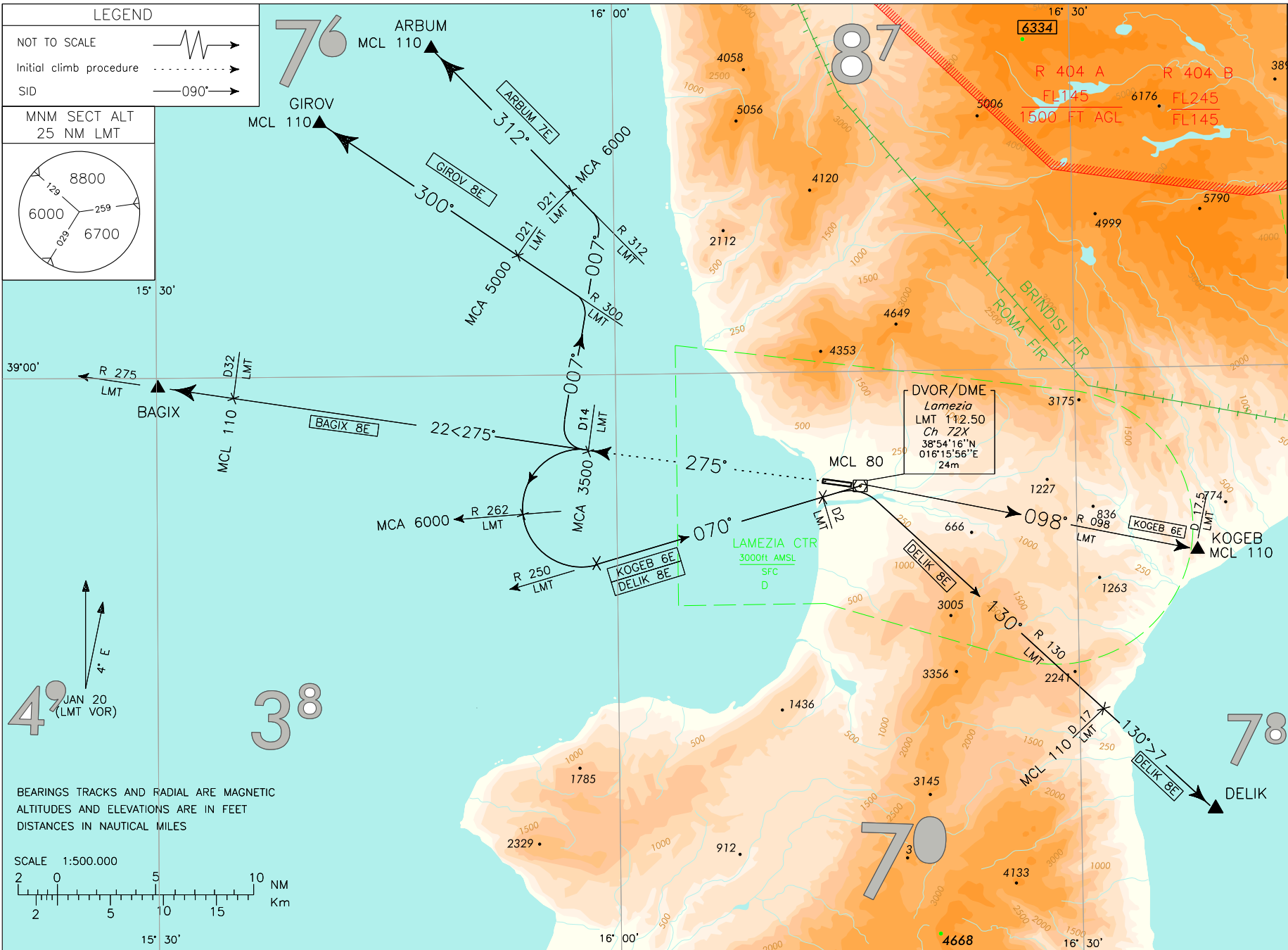
CHANGE: MAG VAR AND BOX FREQ UPDATED

AIP - Italia

AD 2 LICCA 6-7

FREQUENCIES	
TWR Lamezia TWR	125.900
APP Roma Rodar	122.100
ATIS Lamezia Terminal Information	(118.800) (133.250) 119.930

SID	
Rwy 28 LMT VOR	38°
LAMEZIA TERME	
TRANSITION ALT	6000



ENAV - Roma

AIRAC effective date 02 DEC 2021 (A11/21)

INITIAL CLIMB PROCEDURE RWY 28

After take-off proceed on RDL 275 LMT VOR (TR 275°) until 14NM LMT DME to be crossed at 3500 ft or above, then proceed according to the assigned SID.

Minimum climb gradient:
425 ft/NM (7 %) until leaving 4000 ft

SID DESCRIPTION

Initial climb procedure executed:

ARBUM 7E

Turn right on TR 007° until joining RDL 312 LMT VOR (TR 312°) bound to ARBUM.

MCA/MCL: RDL 312/21 NM LMT VOR/DME: 6000 FT; ARBUM: FL 110

BAGIX 8E

Proceed on TR 275° (RDL 275 LMT VOR) until BAGIX.

MCL: INT TR275°/32NM LMT DME: FL 110

DELIK 8E

Turn left and proceed on TR 070° (RDL 250 LMT VOR) until 2 NM LMT DME, then turn right on TR 130° (RDL 130 LMT VOR) bound to DELIK.

MCA/MCL: INT RDL 262 LMT VOR: 6000 FT; RDL 130/17 NM LMT VOR/DME: FL 110

GIROV 8E

Turn right on TR 007° until joining RDL 300 LMT VOR (TR 300°) bound to GIROV.

MCA/MCL: RDL 300/21 NM LMT VOR/DME: 5000 FT; GIROV: FL 110

KOGEB 6E

Turn left and proceed on TR 070° (RDL 250 LMT VOR) to LMT DME, then turn right on TR 098° (RDL 098 LMT VOR) bound to KOGEB.

MCA/MCL: INT RDL 262 LMT VOR: 6000 FT; LMT VOR/DME: FL80; KOGEB FL110

REMARK FOR SID RWY 28

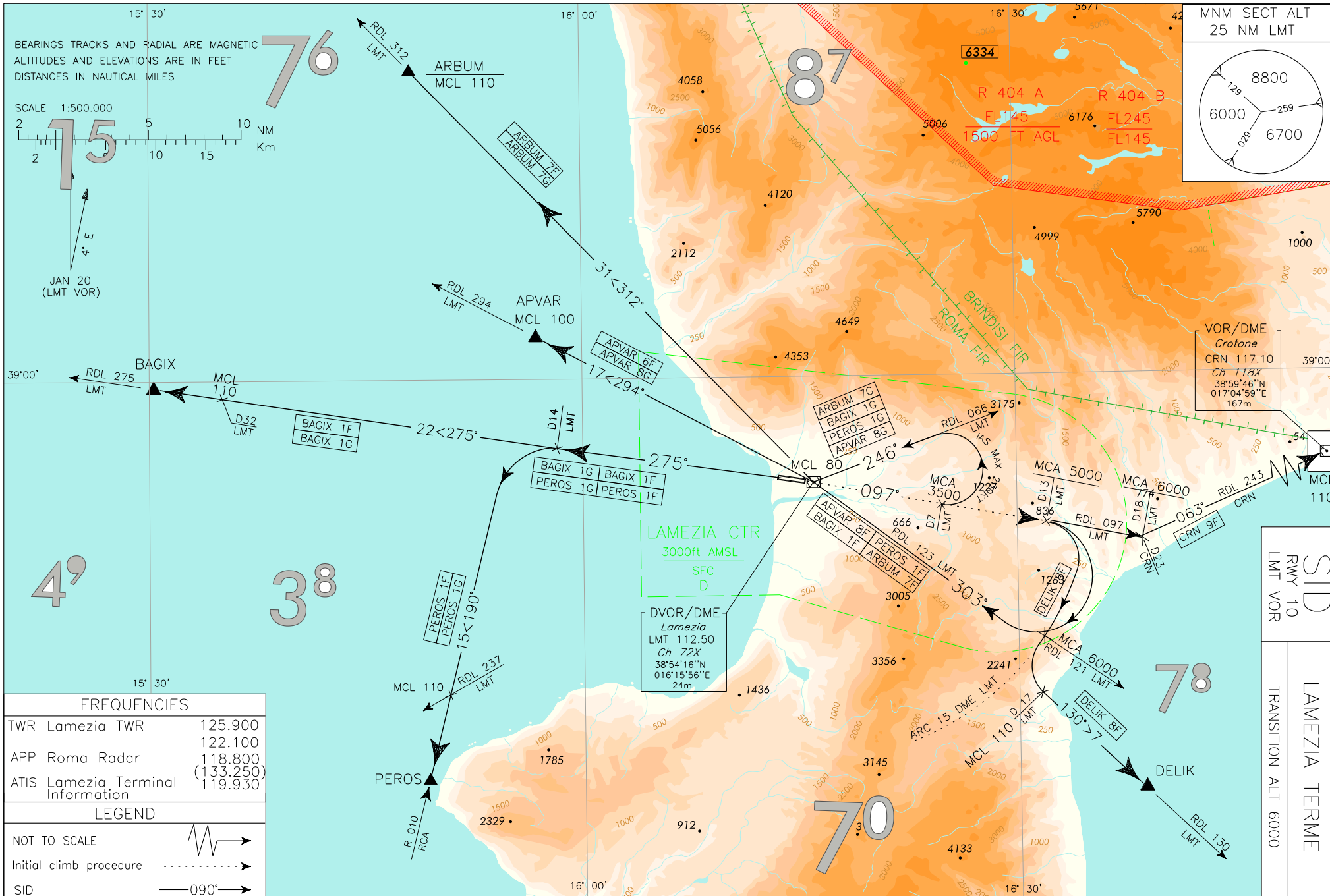
Minimum climb gradient: 330 ft/NM (5.4%)

Intenzionalmente bianca

Intentionally left blank

CHANGE: MAG VAR AND BOX FREQ UPDATED

ENAV - Roma



FREQUENCIES	
TWR Lamezia TWR	125.900
	122.100
APP Roma Radar	118.800
	(133.250)
ATIS Lamezia Terminal Information	119.930
LEGEND	
NOT TO SCALE	
Initial climb procedure	
SID	

INITIAL CLIMB PROCEDURE RWY 10

For SIDs APVAR 9G, ARBUM 7G, BAGIX 1G and PEROS 1G, after take-off continue on runway heading to join RDL 097 LMT VOR until 7NM LMT DME to be crossed at 3500 ft or above, then proceed according to the assigned SID.

REMARK

- Minimum climb gradient 7.5 %
- Close-in obstacle penetrating OIS 2.5%.

For SIDs APVAR 8F, ARBUM 7F, BAGIX 1F, PEROS 1F, CRN 9F and DELIK 8F, after take-off continue on runway heading to join RDL 097 LMT VOR until 13NM LMT DME to be crossed at 5000 ft or above, then proceed according to the assigned SID.

REMARK

- Minimum climb gradient 7.0 %
- Close-in obstacle penetrating OIS 2.5%.

SID DESCRIPTION

Initial climb procedures executed:

APVAR 8G

Turn left (IAS MAX 230KT) to join RDL 066 LMT VOR until LMT VOR, then turn right to join RDL 294 LMT VOR bound to APVAR.

MCA/MCL: RDL 097/7 NM LMT VOR/DME: 3500FT; LMT VOR FL: 80; APVAR: FL 100
Minimum climb gradient: 460ft/NM (7.5%) until leaving 6000ft.

ARBUM 7G

Turn left (IAS MAX 230KT) to join RDL 066 LMT VOR until LMT VOR, then turn right to join RDL 312 LMT VOR bound to ARBUM.

MCA/MCL: RDL 097/7 NM LMT VOR/DME: 3500FT; LMT VOR: FL 80; ARBUM: FL 110
Minimum climb gradient: 460ft/NM (7.5%) until leaving 6000ft.

BAGIX 1G

Turn left (IAS MAX 230KT) and proceed on TR 246° (RDL 066 LMT VOR) until LMT VOR, then proceed on TR 275° (RDL 275 LMT VOR) bound to BAGIX.

MCA/MCL: RDL 097/7 NM LMT VOR/DME: 3500FT; LMT VOR: FL 80; INT TR275°/32NM LMT DME: FL 110.
Minimum climb gradient: 460ft/NM (7.5%) until leaving 6000ft.

PEROS 1G

Turn left (IAS MAX 230KT) to join RDL 066 LMT VOR until LMT VOR then proceed on RDL 275 LMT VOR until 14 NM LMT DME then turn left to join RDL 010 RCA VOR bound to PEROS.

MCA/MCL: RDL 097/7 NM LMT VOR/DME: 3500 FT; LMT VOR: FL 80; INT TR190°/RDL237 LMT VOR: FL110
Minimum climb gradient: 460ft/NM (7.5%) until leaving 6000ft.

APVAR 8F

Turn right and proceed on TR 303° (RDL 123 LMT VOR) until LMT VOR, then proceed on TR 294° (RDL 294 LMT VOR) bound to APVAR.

MCA/MCL: RDL 097/13NM LMT VOR/DME: 5000FT; LMT VOR: FL 80; APVAR: FL 100

ARBUM 7F

Turn right and proceed on TR 303° (RDL 123 LMT VOR) until LMT VOR, then proceed on TR 312° (RDL 312 LMT VOR) bound to ARBUM.

MCA/MCL: RDL 097/13NM LMT VOR/DME: 5000FT; LMT VOR: FL 80; ARBUM: FL 110

BAGIX 1F

Turn right and proceed on TR 303° (RDL 123 LMT VOR) until LMT VOR, then proceed on TR 275° (RDL 275 LMT VOR) BAGIX.

MCA/MCL: RDL 097/13NM LMT VOR/DME: 5000FT; LMT VOR: FL 80; INT TR 275°/32NM LMT DME: FL 110

CRN 9F

Proceed on TR 097° (RDL 097 LMT VOR) until 18 NM LMT DME (RDL 243/23 NM CRN VOR/DME) to be reached at or above 6000 ft, then turn left on TR 063° (RDL 243 CRN VOR) bound to CRN VOR.

MCA/MCL: RDL 097/13NM LMT VOR/DME: 5000FT; RDL 097/18 NM LMT VOR/DME (RDL 243/23 NM CRN VOR/DME): 6000 FT;
CRN VOR: FL 110

DELIK 8F

Turn right to join ARC 15 NM LMT DME, crossing RDL 121 LMT VOR turn left until joining RDL 130 LMT VOR bound to DELIK.

MCA/MCL: RDL 097/13NM LMT VOR/DME: 5000FT; INT ARC 15 NM LMT DME / RDL 121 LMT VOR: 6000 FT;
RDL 130/17 NM LMT VOR/DME: FL 110

PEROS 1F

Turn right and proceed on TR 303° (RDL 123 LMT VOR) until LMT VOR, then proceed on TR 275° (RDL 275 LMT VOR) until 14 NM LMT DME, then turn left and proceed on TR 190° (RDL 010 RCA VOR) bound to PEROS.

MCL: RDL 097/13NM LMT VOR/DME: 5000FT; LMT VOR: FL 80; INT TR190°/RDL 237 LMT VOR: FL110