

ICAO - VISUAL APPROACH CHART

AD 2 LICA 5-1

SCALE 1:250.000



FIS Roma Information	129.575
Brindisi Information	131.125
APP Roma Radar	118.800 (133.250)
TWR Lamezia TWR	122.100 125.900
ATIS Lamezia Terminal Information	119.930

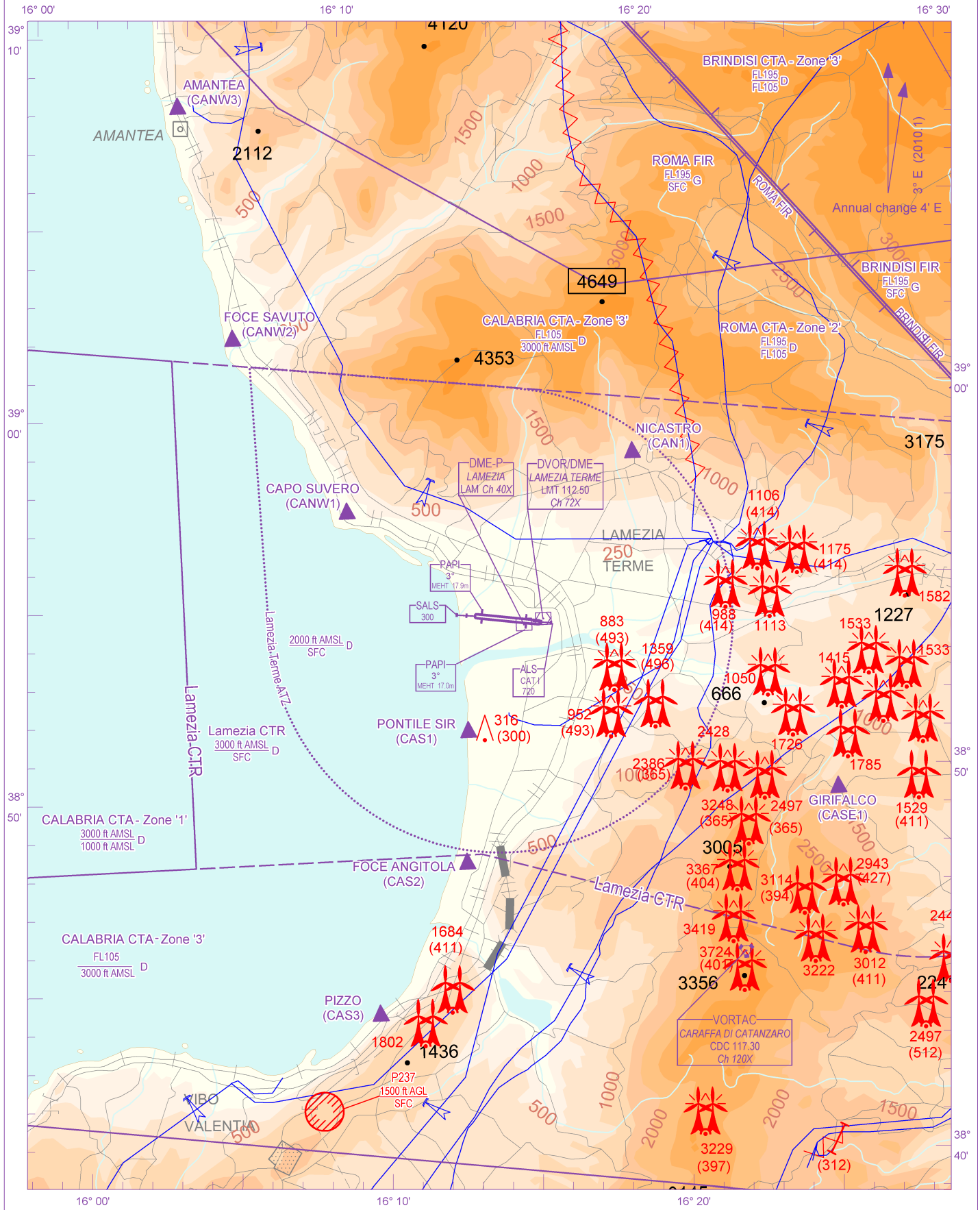
AD ELEV

46

L
I
C
A

LAMEZIA TERME

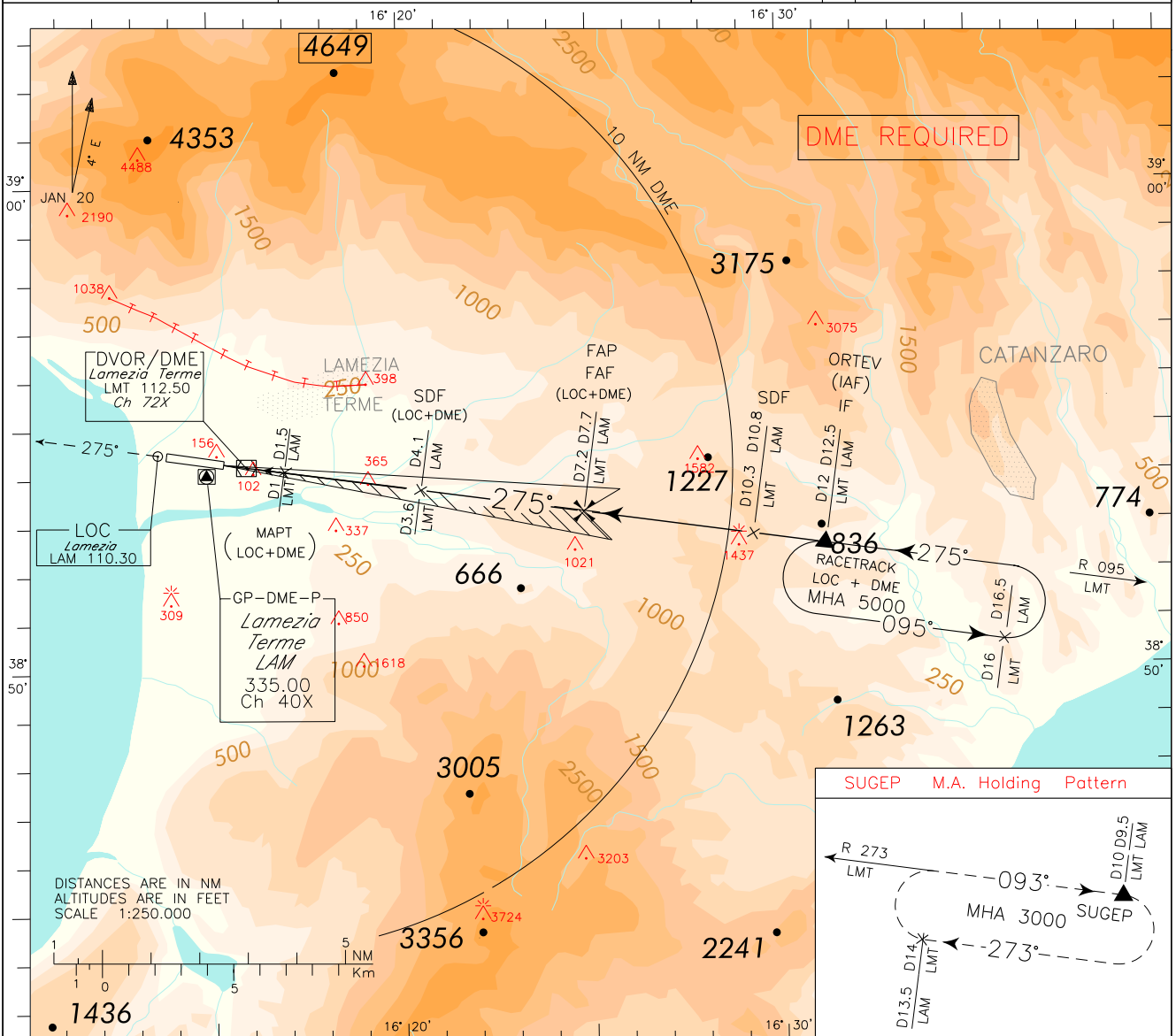
CHANGE: NEW SALS RWY 10 AND MEHT VALUE RWY 10 UPDATED



CHANGE: IF ALTITUDE MODIFIED, MAG VAR AND BOX FREQ UPDATED

DOC. 8168 – ED.6 2014 – AMDT 8

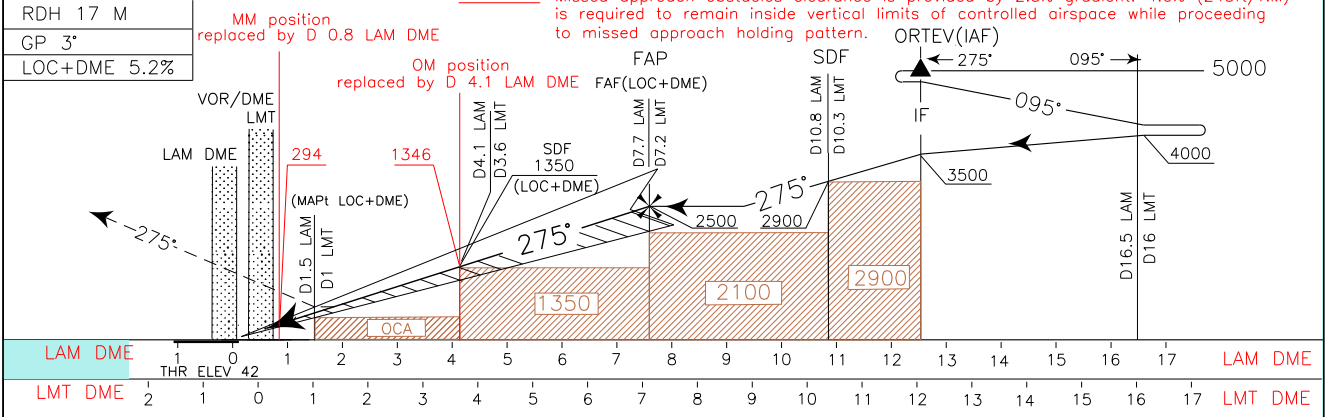
APP Roma Radar	118.800 (133.250)	AD ELEV	46	L I C A	LAMEZIA TERME ILS or LOC-Z RWY 28
TWR Lamezia TWR	125.900 122.100				
ATIS Lamezia Terminal Information	119.930				



TRANSITION ALT 6000

MISSED APPROACH: Proceed on TR 275° climbing to 3000 ft. At 700 ft join RDL 273 LMT VOR bound to SUGEP.

REMARK: Missed approach obstacles clearance is provided by 2.5% gradient. 4.0% (243ft/NM) is required to remain inside vertical limits of controlled airspace while proceeding to missed approach holding pattern.



STRAIGHT IN APPROACH	OCA (OCH)				(*) CIRCLING SECTOR NOT ALLOWED	FT PER MIN	GS	FAF-D4.3	D4.3-D1	LAM DME	ALT(HGT)	MNM SECT ALT
	A	B	C	D								
ILS	232 (190)	244 (202)	252 (210)	263 (221)		850	160	1 : 21	1 : 14	6	2269(2227)	
LOC + DME	670 (624)					745	140	1 : 33	1 : 25	5	1632(1590)	
(*) CIRCLING	1000 (954)	1100 (1054)	1650(1604)	2520(2474)		640	120	1 : 48	1 : 39	4	1314(1272)	
						530	100	2 : 10	1 : 59	3	996(954)	
						425	80	2 : 42	2 : 29	2	677(635)	

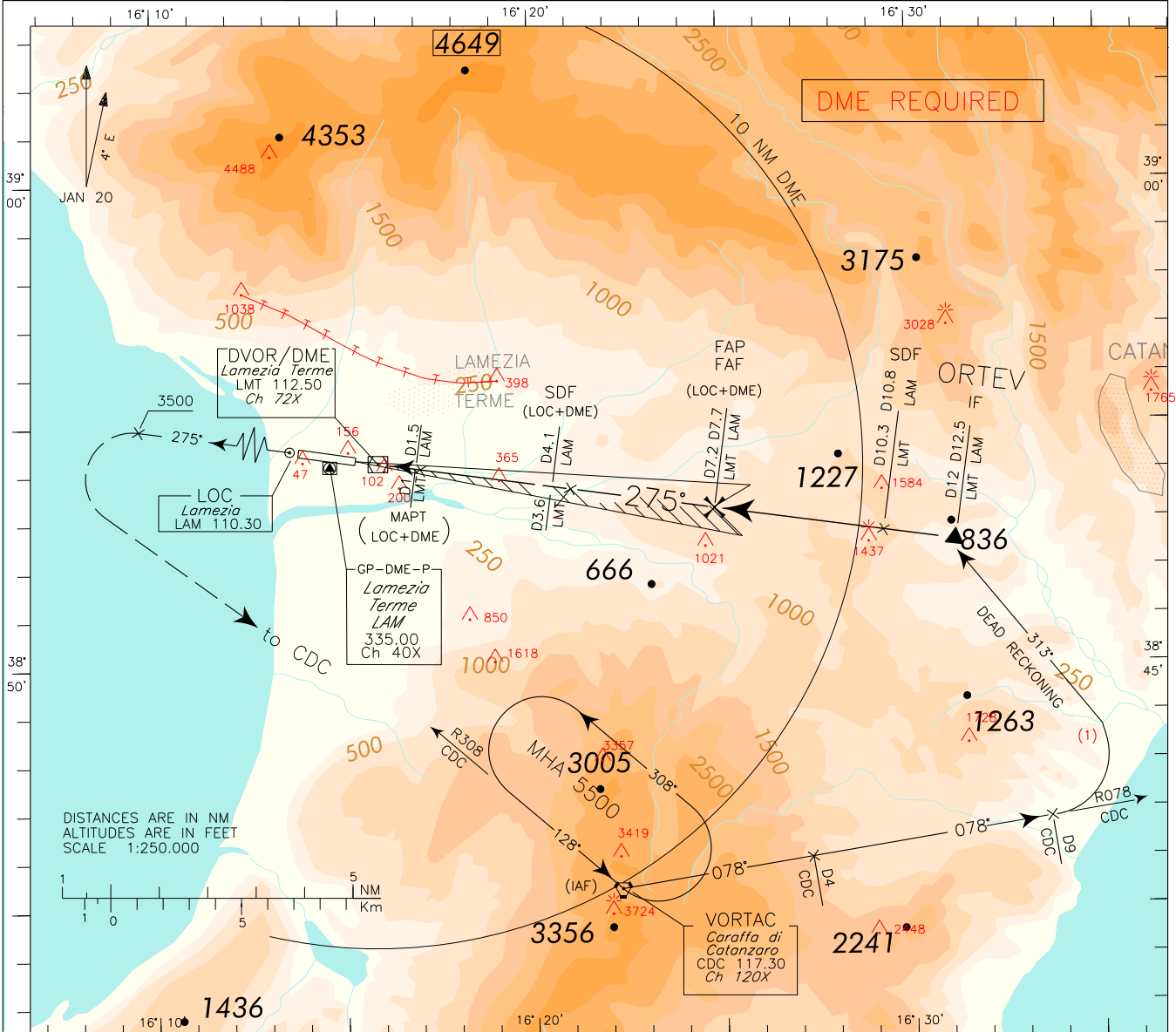
FIX/POINT	Coordinates (WGS84)
IAF (ORTEV)	38°52'22.2"N 016°31'05.7"E
IF (ORTEV)	38°52'22.2"N 016°31'05.7"E
SDF INT LOC COURSE/10.8NM LAM LOC/DME INT LOC	38°52'37.4"N 016°28'58.4"E
FAF (LOC ONLY)	38°53'05.3"N 016°25'02.9"E
SDF INT LOC COURSE/4.1 NM LAM LOC/DME (LOC ONLY)	38°53'37.6"N 016°20'29.4"E
MAPt INT LOC COURSE/1.5 NM LAM LOC/DME (LOC ONLY)	38°54'00.8"N 016°17'11.6"E
INT LOC COURSE/0.8 NM LAM LOC/DME	38°54'07.5"N 016°16'18.2"E

ICAO - INSTRUMENT APPROACH CHART

AD 2 LICA 5-5

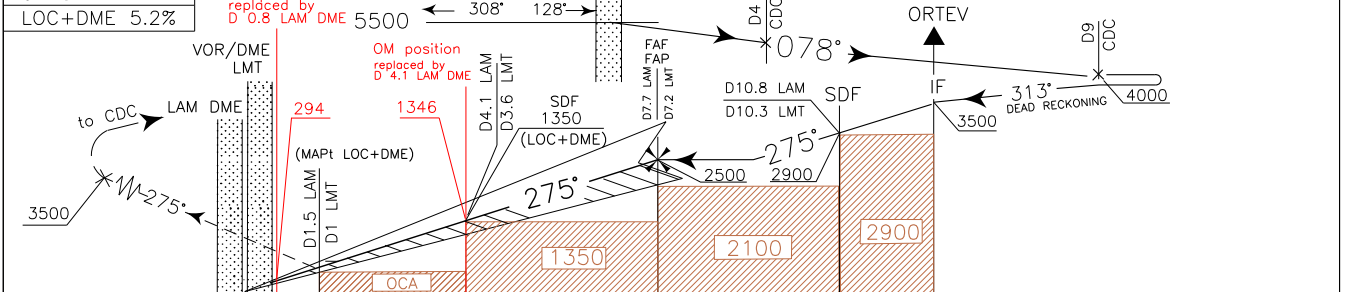
(1) WARNING: Dead reckoning Based on 210 kt IAS MAX.	APP <i>Roma Radar</i>	118.800 (133.250)	AD ELEV 46	L I C A	LAMEZIA TERME ILS or LOC-Y RWY 28
	TWR <i>Lamezia TWR</i>	125.900 122.100			
	ATIS <i>Lamezia Terminal Information</i>	119.930			

CHANGE: IF ALTITUDE MODIFIED, MAG VAR AND BOX FREQ UPDATED



TRANSITION ALT 6000 MISSED APPROACH: Proceed on TR 275° climbing to 5500 ft. Leaving 3500 ft turn left to CDC VORTAC.

RDH 17 M
GP 3°
LOC+DME 5.2%



LAM DME	THR ELEV 42	1	0	1	2	3	4	5	6	7	8	9	10	11	12	13	14	15	16	17	LAM DME
LMT DME		1	0	1	2	3	4	5	6	7	8	9	10	11	12	13	14	15	16	17	LMT DME

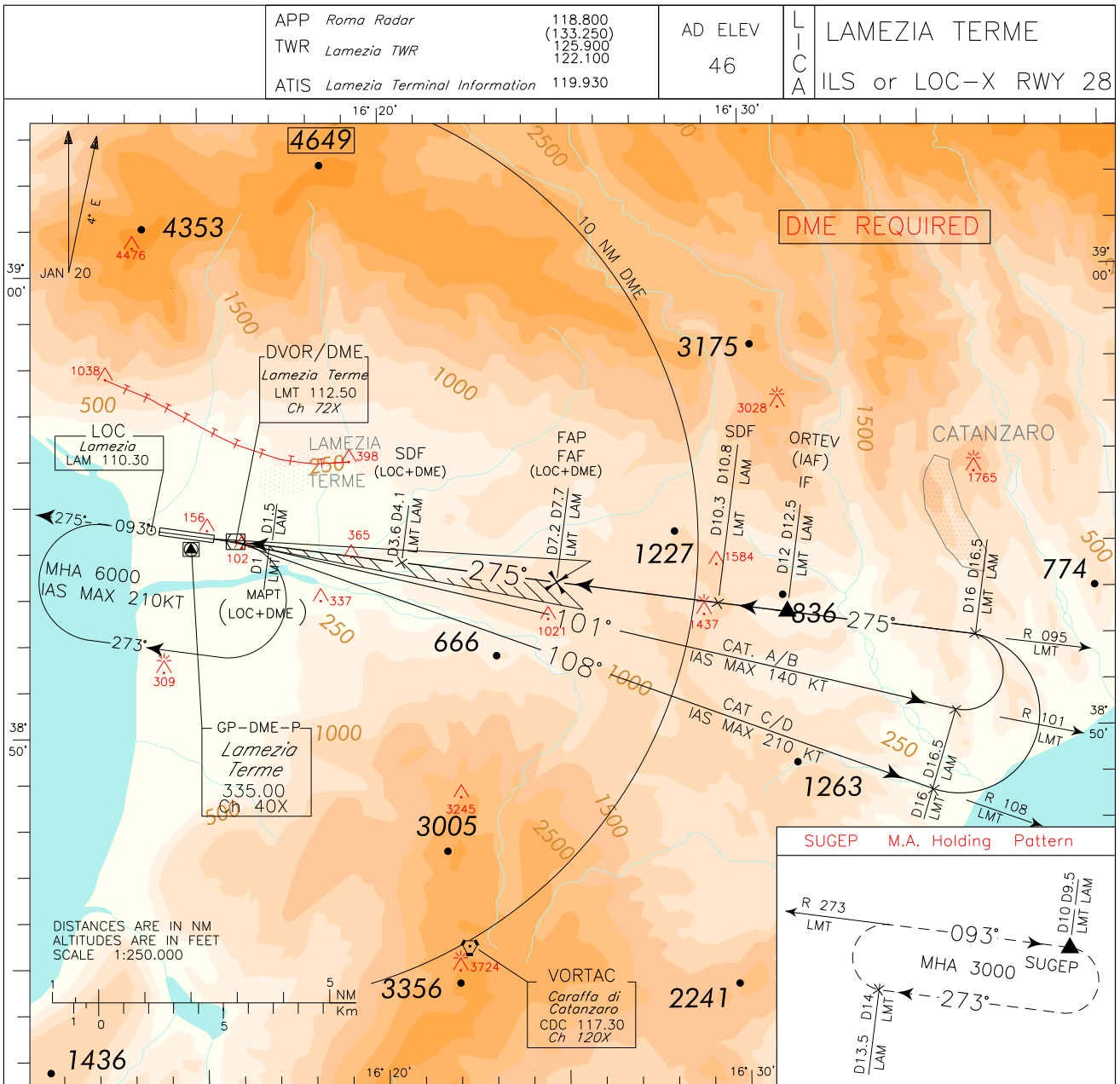
STRAIGHT IN APPROACH	ILS	232 (190)	244 (202)	252 (210)	263 (221)	(*) CIRCLING SECTOR NOT ALLOWED	FT PER MIN	GS	FAF-D4.3 3.6 NM	D4.3-D1 3.3 NM	LAM DME 7	ALT(HGT) 2269(2227)	MNM SECT ALT CDC VORTAC 8200 6000 239 6700
	LOC + DME	670 (624)					850 160 1 : 21 1 : 14 6 1951(1909)	745 140 1 : 33 1 : 25 5 1632(1590)	640 120 1 : 48 1 : 39 4 1314(1272)	530 100 2 : 10 1 : 59 3 996(954)	425 80 2 : 42 2 : 29 2 677(635)		
(*) CIRCLING		1000 (954)	1100 (1054)	1650(1604)	2520(2474)								

FIX/POINT	Coordinates (WGS84)
IAF (CDC VORTAC)	38°45'21.1"N 016°22'08.9"E
IF (ORTEV)	38°52'22.2"N 016°31'05.7"E
SDF INT LOC COURSE/10.8NM LAM LOC/DME INT LOC	38°52'37.4"N 016°28'58.4"E
FAF (LOC ONLY)	38°53'05.3"N 016°25'02.9"E
SDF INT LOC COURSE/4.1 NM LAM LOC/DME (LOC ONLY)	38°53'37.6"N 016°20'29.4"E
MAPt INT LOC COURSE/1.5 NM LAM LOC/DME (LOC ONLY)	38°54'00.8"N 016°17'11.6"E
INT LOC COURSE/0.8 NM LAM LOC/DME	38°54'07.5"N 016°16'18.2"E

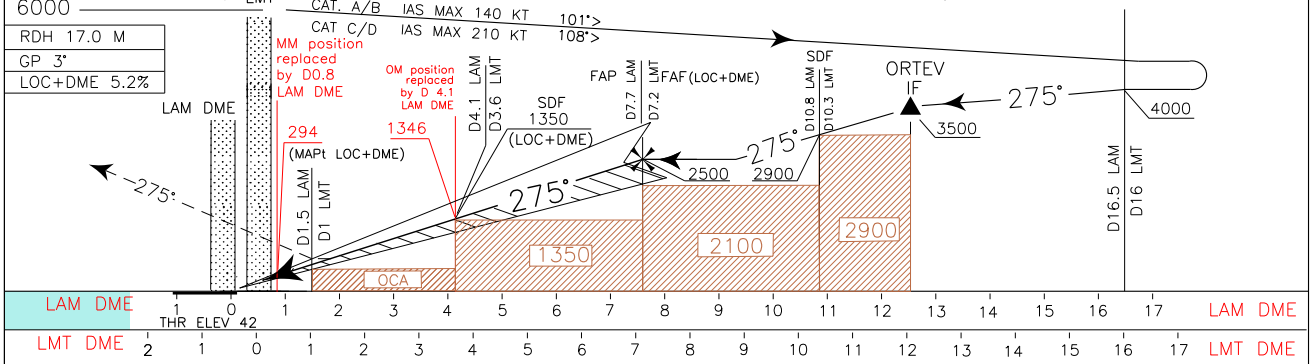
ICAO – INSTRUMENT APPROACH CHART

AD 2 LICA 5-7

CHANGE: IF ALTITUDE MODIFIED, MAG VAR AND BOX FREQ UPDATED



TRANSITION ALT 6000 MISSED APPROACH: Proceed on TR 275° climbing to 3000 ft. At 700 ft join RDL 275 LMT VOR bound to SUGEP. **REMARK:** Missed approach obstacles clearance is provided by 2.5% gradient. 4.0% (243ft/NM) is required to remain inside vertical limits of controlled airspace while proceeding to missed approach holding pattern.



OCA (OCH)		A	B	C	D	(*) CIRCLING SECTOR 	FT PER MIN	GS	FAF-D4.3	D4.3-D1	LAM DME	ALT(HGT)	MNM SECT ALT
STRAIGHT IN APPROACH	LOC + DME	232 (190)	244 (202)	252 (210)	263 (221)		850	160	3.6 NM	3.3 NM	7	2269(2227)	LMT VOR/DME
							745	140	1 : 33	1 : 25	5	1632(1590)	
						640	120	1 : 48	1 : 39	4	1314(1272)		
						530	100	2 : 10	1 : 59	3	996(954)		
(*) CIRCLING		1000(954)	1100(1054)	1650(1604)	2520(2474)	425	80	2 : 42	2 : 29	2	677(635)		

FIX/POINT	Coordinates (WGS84)
IAF (LMT VOR)	38°54'16.0"N 016°15'56.0"E
IF (ORTEV)	38°52'22.2"N 016°31'05.7"E
SDF INT LOC COURSE/10.8NM LAM LOC/DME INT LOC	38°52'37.4"N 016°28'58.4"E
FAF (LOC ONLY)	38°53'05.3"N 016°25'02.9"E
SDF INT LOC COURSE/4.1 NM LAM LOC/DME (LOC ONLY)	38°53'37.6"N 016°20'29.4"E
MAPt INT LOC COURSE/1.5 NM LAM LOC/DME (LOC ONLY)	38°54'00.8"N 016°17'11.6"E
INT LOC COURSE/0.8 NM LAM LOC/DME	38°54'07.5"N 016°16'18.2"E

ICAO - INSTRUMENT APPROACH CHART

AD 2 LICA 5-9

REMARK: final track off set 4.70°
RWY center line intercepted
3267 m before THR 28

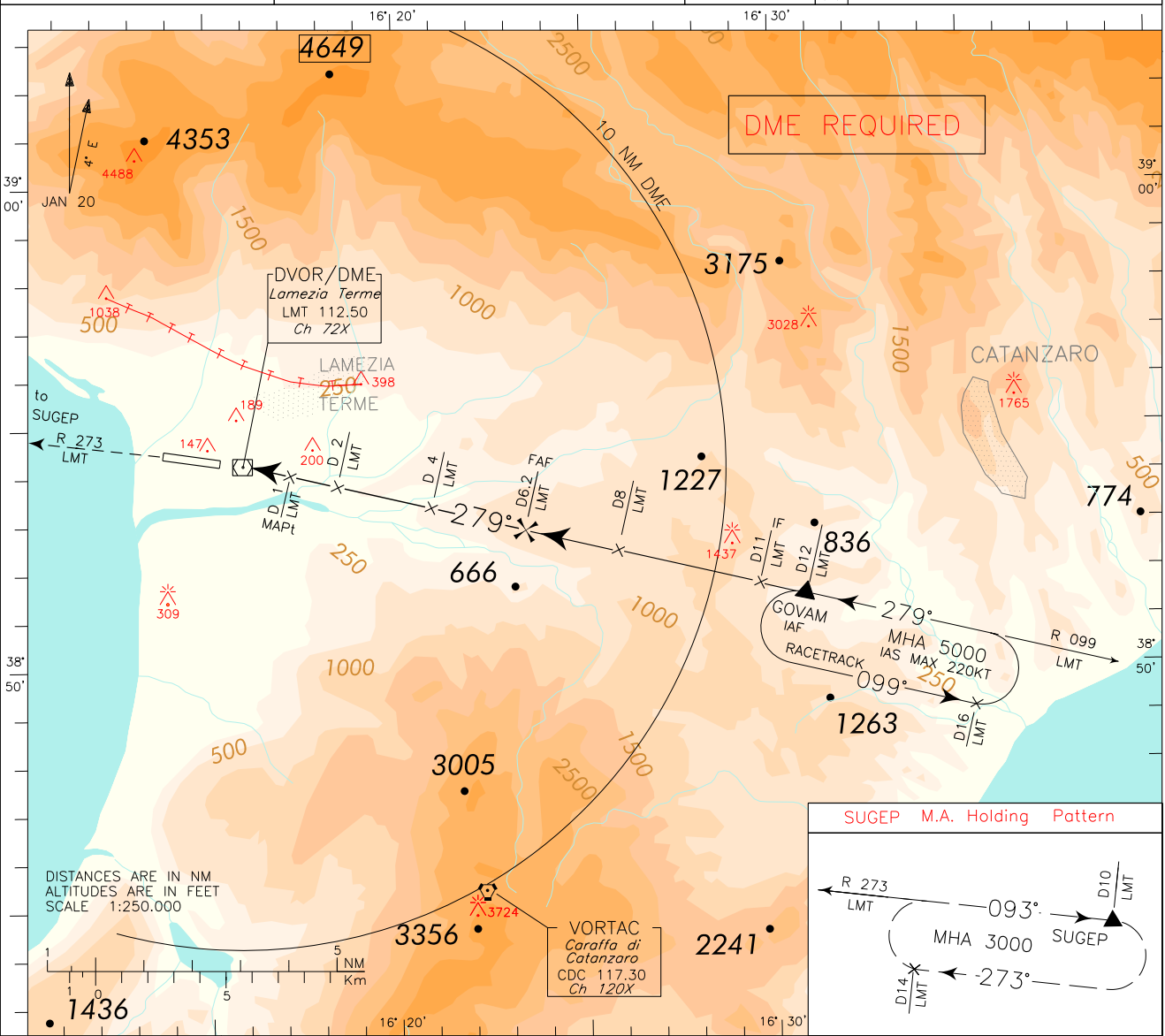
APP Roma Radar 118.800
(133.250)
TWR Lamezia TWR 125.900
122.100
ATIS Lamezia Terminal Information 119.930

AD ELEV 46

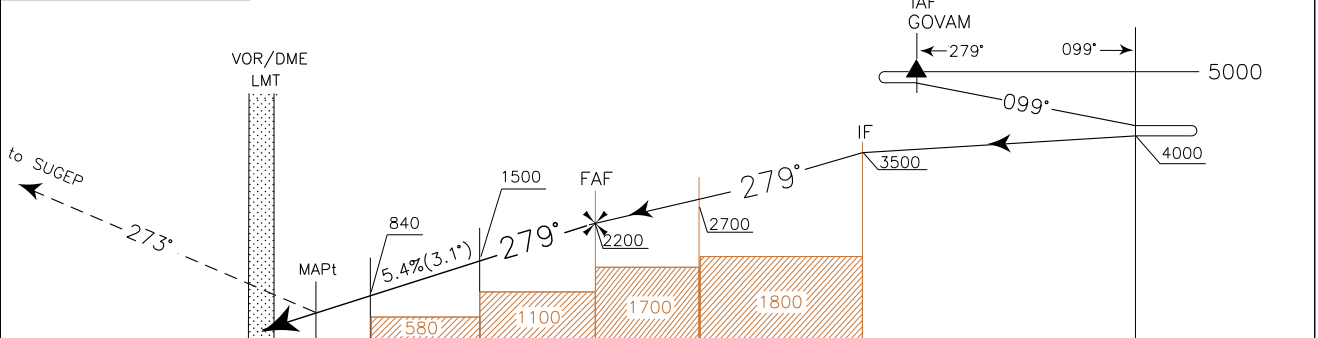
L I C A
V O R - Z R W Y 28
LAMEZIA TERME

DOC. 8168 - ED.6 2014 AMDT 8

CHANGE: MAG VAR AND BOX FREQ UPDATED



TRANSITION ALT 6000 MISSED APPROACH: At 1NM LMT DME proceed on TR 273° (R 273 LMT VOR) to SUGEP climbing to 3000 ft.



LMT DME	THR	ELEV 42	0	D1	D2	D3	D4	D5	D6	D7	D8	D9	D10	D11	D12	D13	D14	D15	D16	LMT DME		
NM	3	2	1	0	1	2	3	4	5	6	7	8	9	10	11	12	13	14	15	16	17	NM

OCA (OCH)	A	B	C	D
VOR	700 (654)			
(1) CIRCLING	1000 (954)	1100 (1054)	1650(1604)	2520(2474)

STRAIGHT IN APPROACH	FT PER MIN	GS	CIRCLING SECTOR		DME LMT	ALT (HGT)	MNM SECT ALT LMT VOR DME
			FAF-MAPt	MAPt-THR			
	875	160	2 : 00	0 : 30	6	2140 (2098)	
	766	140	2 : 20	0 : 33	5	1815 (1773)	
	656	120	2 : 36	0 : 39	4	1500 (1458)	
	547	100	3 : 06	0 : 48	3	1165 (1123)	
	437	80	3 : 54	0 : 58	2	840 (798)	

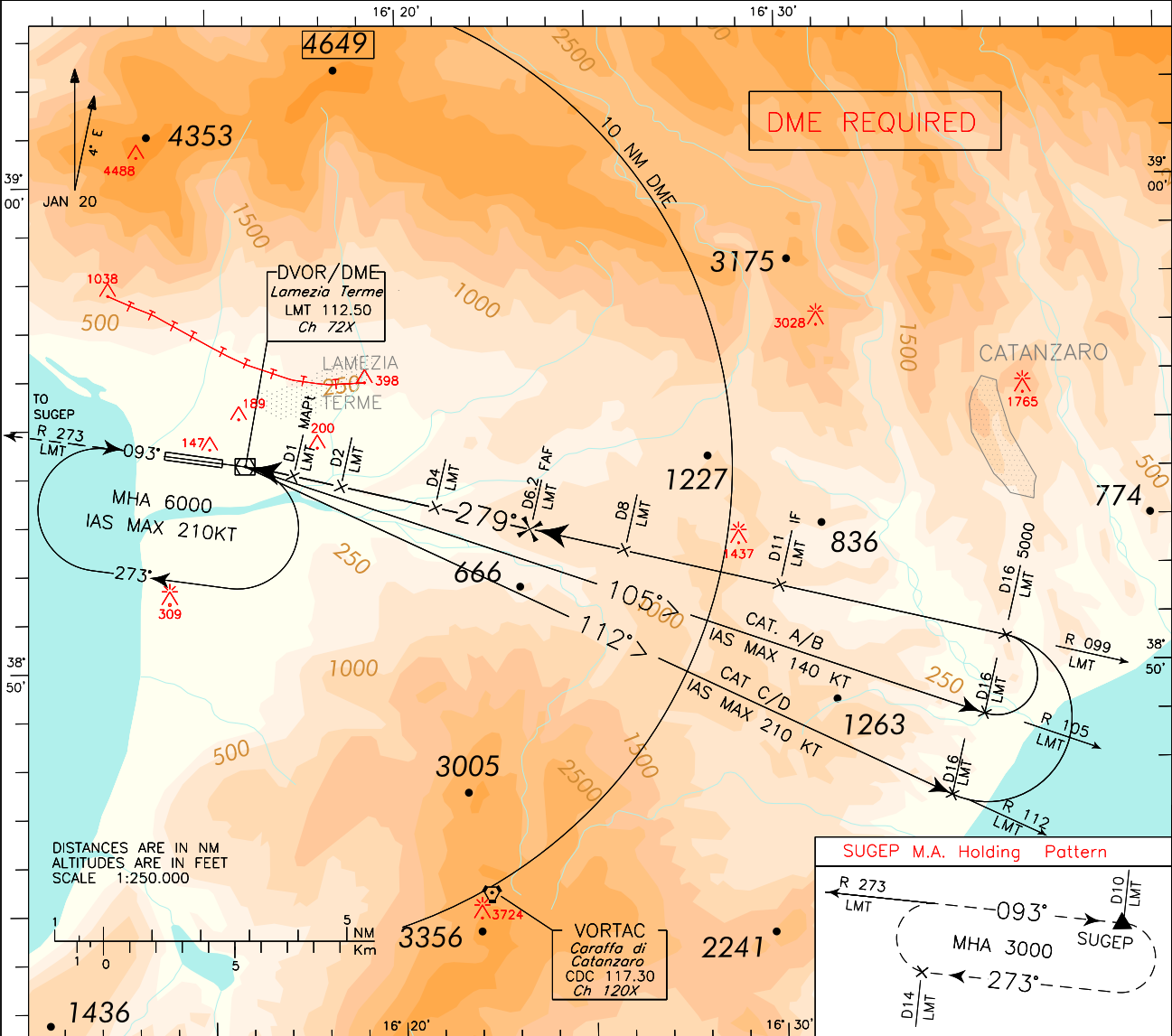
FIX/POINT	Coordinates (WGS84)
IAF (GOVAM)	38°51'30.1"N 016°30'53.2"N
IF	38°51'44.0"N 016°29'38.5"E
RDL 099/8 NM LMT VOR/DME	38°52'25.7"N 016°25'54.2"E
FAF	38°52'52.0"N 016°23'40.1"E
RDL 099/4 NM LMT VOR/DME	38°53'21.0"N 016°20'55.1"E
RDL 099/2 NM LMT VOR/DME	38°53'48.5" N 016°18'25.5"E
MAPt	38°54'02.3"N 016°17'10.7"E

ICAO - INSTRUMENT APPROACH CHART

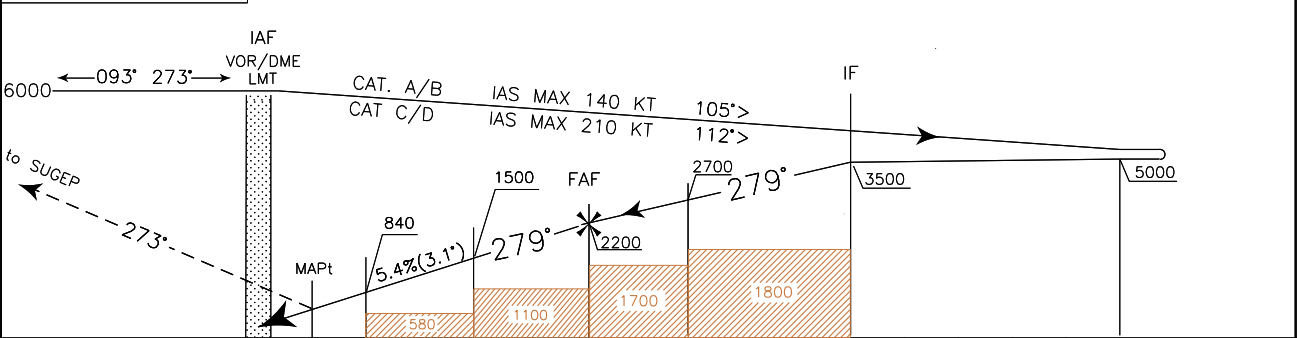
AD 2 LICA 5-11

REMARK: final track off set 4.70° RWY center line intercepted 3267 m before THR 28	APP Roma Radar	118.800 (133.250)	AD ELEV	L I C A	LAMEZIA TERME
	TWR Lamezia TWR	125.900 122.100	46		
	ATIS Lamezia Terminal Information	119.930			

DOC. 8168 - ED.6. 2014 AMDT 8
CHANGE: MAG VAR AND BOX FREQ UPDATED



TRANSITION ALT 6000 MISSED APPROACH: At 1 NM LMT DME proceed on TR 273° (RDL 273 LMT VOR) to SUGEP climbing to 3000 ft.



LMT DME	THR ELEV 42	0	D1	D2	D3	D4	D5	D6	D7	D8	D9	D10	D11	D12	D13	D14	D15	D16	LMT DME			
NM	3	2	1	0	1	2	3	4	5	6	7	8	9	10	11	12	13	14	15	16	17	NM

OCA (OCH)		A	B	C	D	(1) CIRCLING SECTOR NOT ALLOWED	FT PER MIN	GS	FAF-MAPt	MAPt-THR	LMT DME	ALT (HGT)	MNM SECT ALT LMT VOR DME
VOR		700 (654)					875	160	2 : 00	0 : 30	6	2140 (2098)	
STRAIGHT IN APPROACH							766	140	2 : 20	0 : 33	5	1815 (1773)	
							656	120	2 : 36	0 : 39	4	1500 (1458)	
							547	100	3 : 06	0 : 48	3	1165 (1123)	
(1) CIRCLING		1000 (954)	1100 (1054)	1650 (1604)	2520 (2474)		437	80	3 : 54	0 : 58	2	840 (798)	

FIX/POINT	Coordinates (WGS84)
IAF (LMT VOR)	38°54'16.0"N 016°15'55.6"E
IF	38°51'44.0"N 016°29'38.5"E
RDL 099/8 NM LMT VOR/DME	38°52'25.7"N 016°25'54.2"E
FAF	38°52'52.0"N 016°23'40.1"E
RDL 099/4 NM LMT VOR/DME	38°53'21.0"N 016°20'55.1"E
RDL 099/2 NM LMT VOR/DME	38°53'48.5" N 016°18'25.5"E
MAPt	38°54'02.3"N 016°17'10.7"E

ICAO – INSTRUMENT APPROACH CHART

AD 2 LICA 5-13

DOC. 8168 – ED.6 2014 AMDT 8

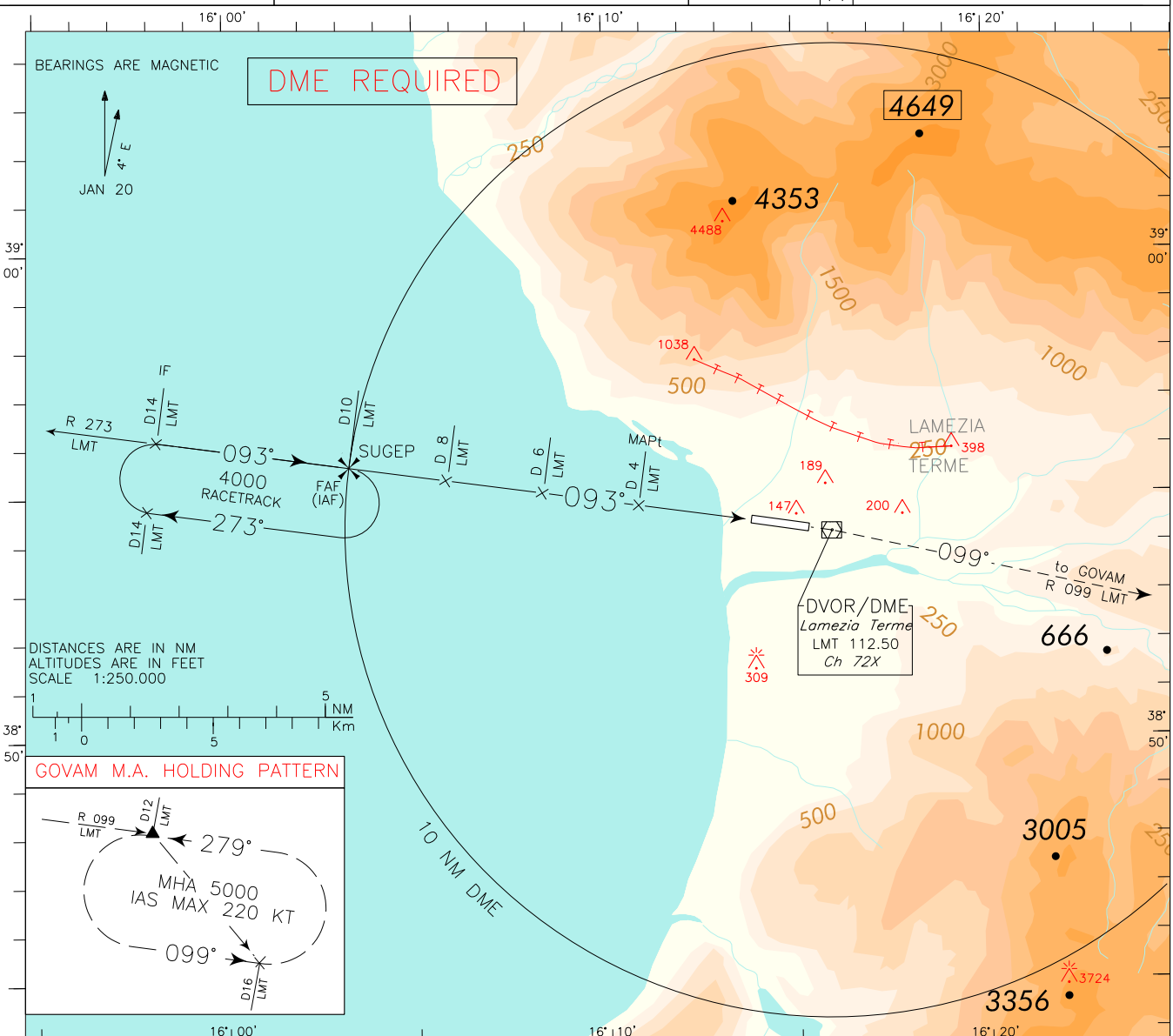
REMARK: Final track off set 1.7°
RWY center line intercepted
5591 m before THR 10

APP *Roma Radar* 118.800
(133.250)
TWR *Lamezia TWR* 125.900
122.100
ATIS *Lamezia Terminal Information* 119.930

AD ELEV 46

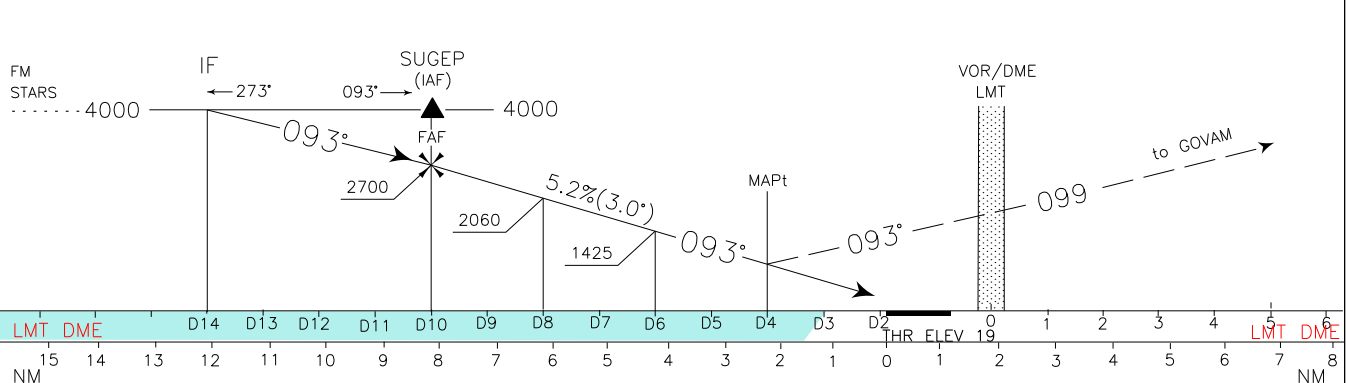
L
I
C
A

LAMEZIA TERME
VOR RWY 10



CHANGE: REVISED CHART

TRANSITION ALT 6000 MISSED APPROACH: At 4NM LMT DME (3.3NM LAM DME) proceed on TR 093° (RDL 273) climbing to 5000 ft to LMT VOR, then proceed on RDL 099 LMT VOR (TR 099°) until GOVAM Holding pattern to be reached at 5000 ft.



STRAIGHT IN APPROACH	OCA (OCH)				(1) CIRCLING SECTOR NOT ALLOWED	FT PER MIN	GS	FAF-MAPt		MAPt-THR		LMT DME	ALT (HGT)	MNM SECT ALT LMT VOR DME
	A	B	C	D				6 NM	2.33 NM					
VOR	1000 (980)					850	160	2 : 15	0 : 52	9	2380 (2361)			
						745	140	2 : 34	1 : 00	8	2060 (2041)			
						635	120	3 : 00	1 : 10	7	1745 (1726)			
						530	100	3 : 36	1 : 24	6	1425 (1406)			
(1) CIRCLING	1000 (954)	1100 (1054)	1650 (1604)	2520 (2474)	425	80	4 : 30	1 : 45	5	1110 (1091)				

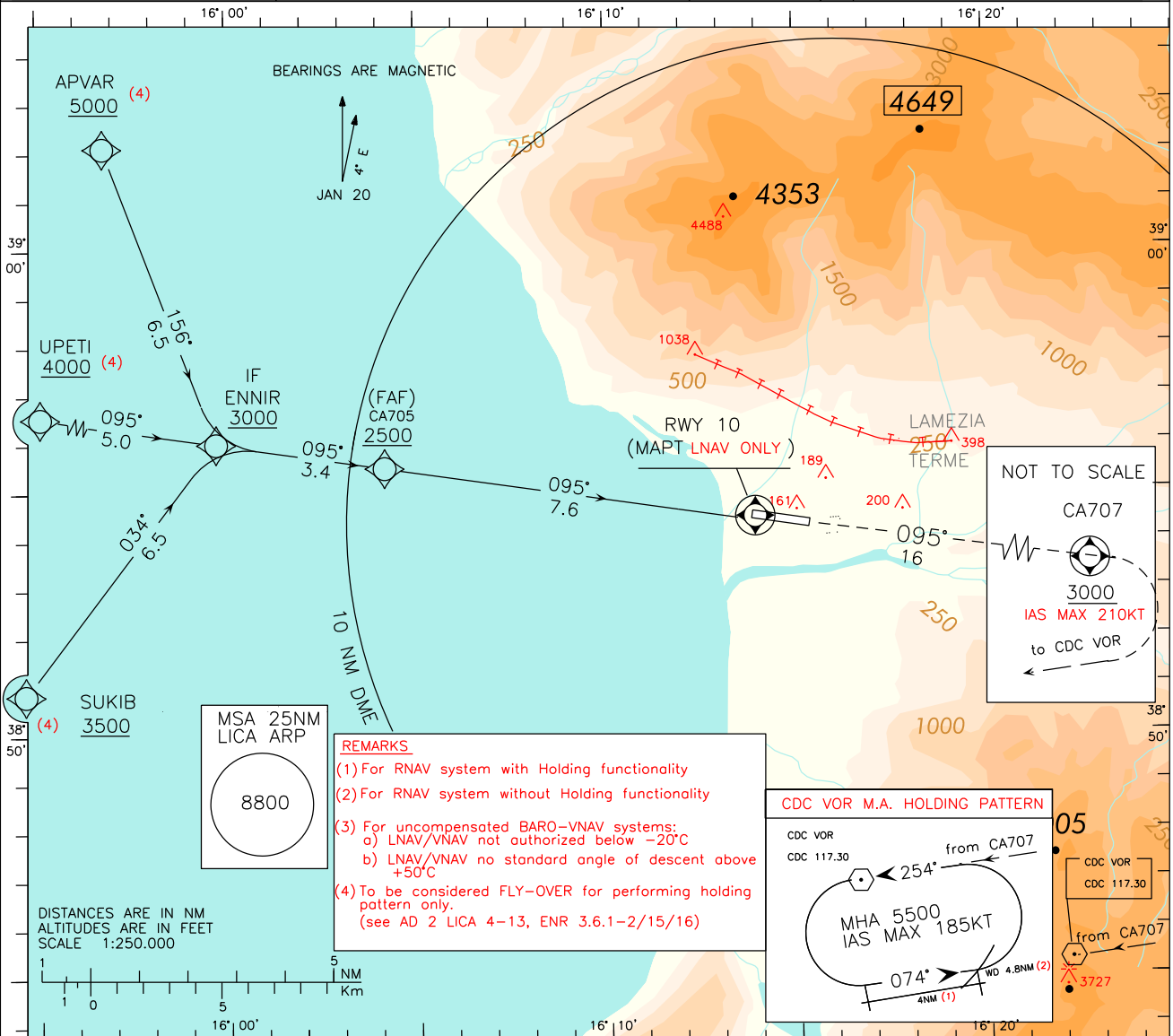
FIX/POINT	Coordinates (WGS84)
IAF (SUGEP)	38°55'30.9"N 016°03'13.2"N
IF	38°56'00.5"N 015°58'08.1"E
FAF (SUGEP)	38°55'30.9"N 016°03'13.2"N
RDL 273/8 NM LMT VOR/DME	38°55'16.1"N 016°05'45.8"E
RDL 273/6 NM LMT VOR/DME	38°55'01.1"N 016°08'18.4"E
MAPt	38°54'46.2"N 016°10'50.9"E

ICAO – INSTRUMENT APPROACH CHART

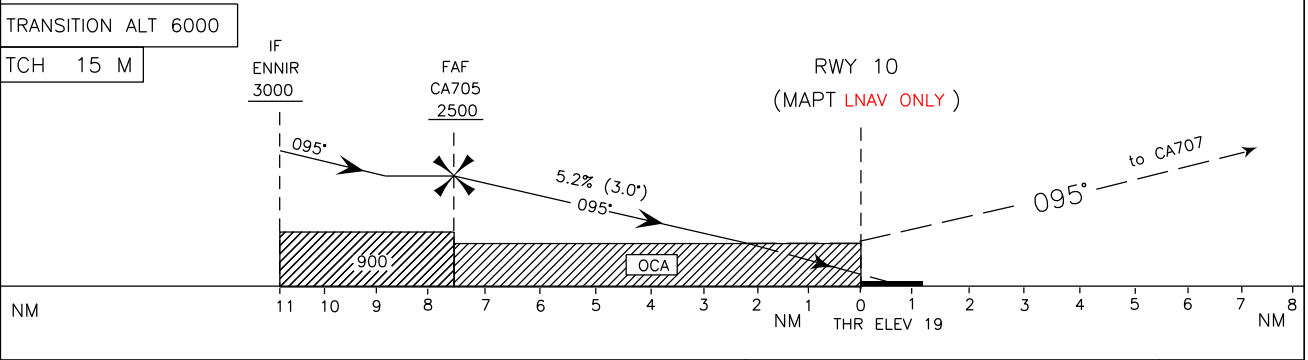
AD 2 LICA 5-15

EGNOS CH 44797 E10A	APP <i>Roma Radar</i>	118.800 (133.250)	AD ELEV 46	L I C A	LAMEZIA TERME	
	TWR <i>Lamezia TWR</i>	125.900 122.100			RNP	RWY 10
	ATIS <i>Lamezia Terminal Information</i>	119.930				

DOC. 8168 – ED.7
CHANGE: LPV MINIMA MODIFIED



MISSED APPROACH: Proceed RWY heading climbing to 5500FT. Over CA707 to be reached at 3000FT or above turn right (IAS MAX 210) direct to CDC VOR (to be reached at 5500FT).



OCA (OCH)		A	B	C	D	CIRCLING SECTOR 	FT PER MIN	GS	FAF – MAPt	RWY10 DIST.	ALT (HGT)
STRAIGHT IN APPROACH	LPV	470 (451)	480 (461)	490 (471)	500 (481)			850	160	7.6 NM	7.5
	LNAV/VNAV	550 (531)	560 (541)	570 (551)	580 (561)		745	140	2 : 51	6	1979 (1960)
	LNAV	760 (741)					635	120	3 : 16	5	1661 (1642)
							530	100	3 : 48	4	1342 (1323)
CIRCLING		1000 (954)	1100 (1054)	1650 (1604)	2520 (2474)		425	80	4 : 34	3	1023 (1005)
									5 : 42	2	705 (686)

TABULAR DESCRIPTION

RNP RWY10 – Instrument Approach procedure

Serial Number	Path Terminator	Waypoint Identifier	Fly Over	Course °M(°T)	Magnetic Variation	Distance (NM)	Turn Direction	Altitude (ft)	Speed Limit (kt)	VPA/TCH	Navigation Specification
010	IF	APVAR	-	-	-	-	-	+5000	-	-	RNAV1/RNP1 (4)
020	TF	ENNIR	-	156 (159.4)	-	6.5	-	+3000	-	-	RNAV1/RNP1 (4)
010	IF	SUKIB	-	-	-	-	-	+3500	-	-	RNAV1/RNP1 (4)
020	TF	ENNIR	-	034 (037.5)	-	6.5	-	+3000	-	-	RNAV1/RNP1 (4)
010	IF	UPETI	-	-	-	-	-	+4000	-	-	RNAV1/RNP1 (4)
020	TF	ENNIR	-	095 (098.3)	-	5.0	-	+3000	-	-	RNAV1/RNP1 (4)
010	TF	ENNIR	-	-	-	-	-	+3000	-	-	RNP APCH
020	TF	CA705	-	095 (098.4)	-	3.4	-	+2500	-	-	RNP APCH
040	TF	RWY10	Y	095 (098.4)	-	7.6	-	@68(3)	-	-3.0/15	RNP APCH
050	CF	CA707	Y	095 (098.4)	+4.0	16	R	+3000	-210	-	RNAV1/RNP1 (4)
060	DF	CDC	-	-	-	-	-	+5500	-210	-	RNAV1/RNP1 (4)

Path Terminator	Waypoint Identifier	Inbound Course °M (°T)	Leg Distance (NM) (1)	Timing(min.)/ Waypoint Distance (NM) (2)	Turn Direction	Minimum Altitude (FT)	Maximum Altitude (FL)	Speed Limit (kt)	Magnetic Variation (°)	Navigation Specification
HM	APVAR	110 (114.0)	3.0	- / 4.4	L	5000	-	-210	+4.0	RNAV1/RNP1 (4)
HM	SUKIB	075 (079.0)	3.0	- / 4.2	R	3500	-	-200	+4.0	RNAV1/RNP1 (4)
HM	UPETI	095 (099.0)	3.0	- / 4.4	L	4000	-	-210	+4.0	RNAV1/RNP1 (4)
HM	CDC	254(258)	4.0	- / 4.8	L	5500	-	-185	+4.0	RNAV1/RNP1 (4)

(1) RNAV system with holding functionality

(2) RNAV system without holding functionality

(3) THR+RDH

(4) For “monitoring and alerting” reason, RNP1 specification is required in case of radar service unavailability or degradation

WAYPOINT LIST
RNP RWY10

Waypoint Identifier	Coordinates
CA705	38°55'32.49" N 016°04'02.03" E
CA707	38°52'01.52" N 016°33'58.37" E

SBAS FAS DATA BLOCK LICA RNP RWY10

Input Data

Parameters	Values
Operation Type	0
SBAS Provider	1 (EGNOS)
Airport Identifier	LICA
Runway	10
Runway Letter	0 (None)
Approach Performance Designator	0
Route Indicator	
Reference Path Data Selector	0
Reference Path Identifier	E10A
LTP/FTP Latitude	385425.2065N
LTP/FTP Longitude	0161342.7045E
LTP/FTP Ellipsoidal Height (metres)	48.5
FPAP Latitude	385410.7595N
Delta FPAP Latitude (seconds)	-14.4470
FPAP Longitude	0161546.4415E
Delta FPAP Longitude (seconds)	123.7370
Threshold Crossing Height	15.00
TCH Units Selector	1 (meters)
Glidepath Angle (degrees)	3.00
Course Width (metres)	105.00
Length Offset (metres)	0
HAL (metres)	40.0
VAL (metres)	35.0

Output Data

Data Block	10 01 03 09 0C 0A 00 00 01 30 31 05 6D 73 B2 10 61 EB F6 06 E5 15 22 8F FF B2 C6 03 2C 81 2C 01 64 00 C8 AF EA 22 E3 78
Calculated CRC Value	EA22E378

Required Additional Data (not CRC wrapped)

These additional data are not required for CRC calculation, but they need to be provided to datahouses for procedure coding in ARINC 424 records

Parameters	Values
ICAO Code	LI
LTP/FTP Orthometric Height (metres)	5.8

Intenzionalmente bianca

Intentionally left blank