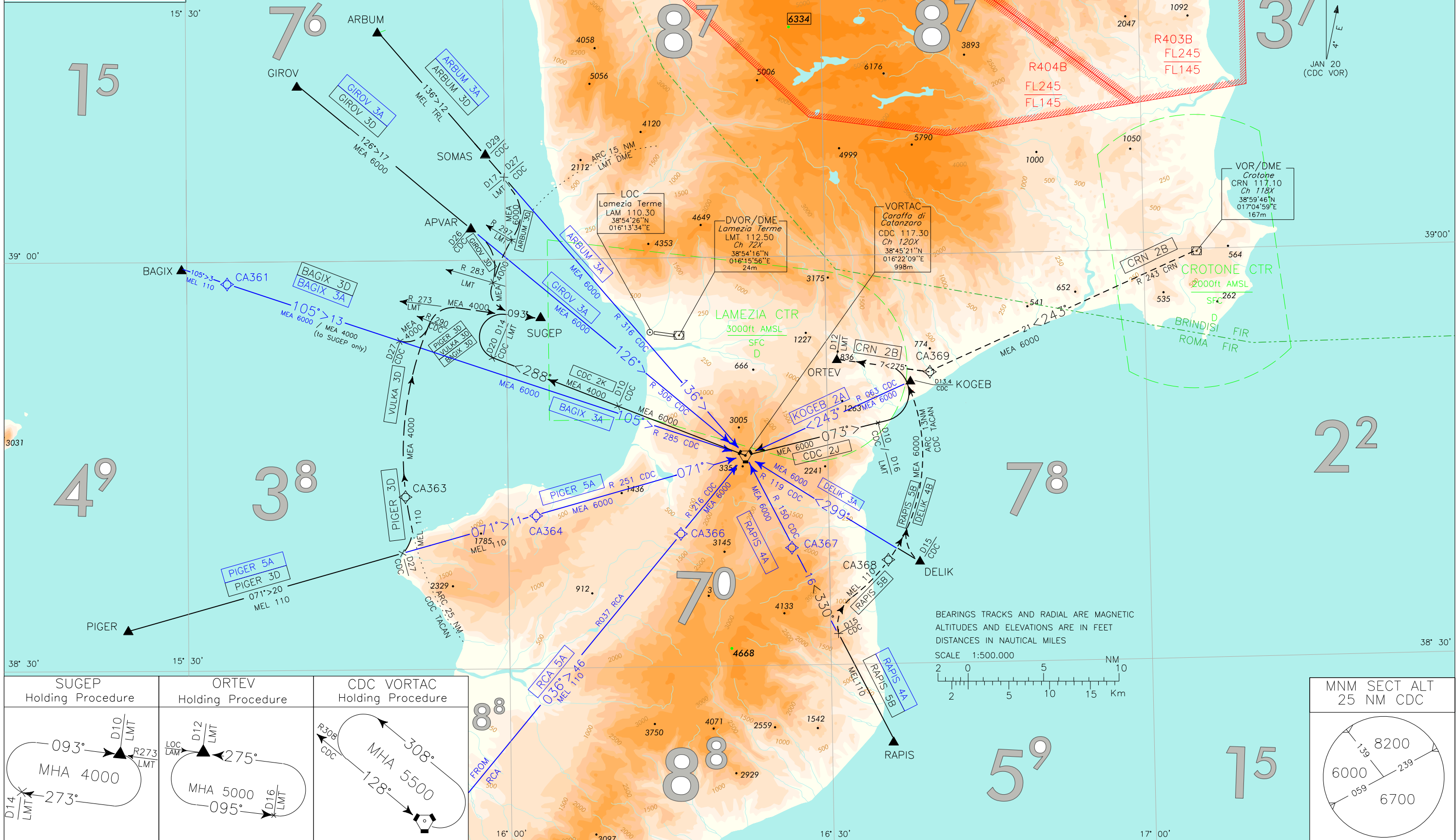


FREQUENCIES	
APP Roma Radar	118.800 (133.250)
TWR Lamezia TWR	125.900
ATIS Lamezia Terminal Information	122.100 119.930
LEGEND	
LINK ROUTES	
STAR	
STAR ATC DISCRETION	
NOT TO SCALE	

LINK ROUTES & STAR	LAMEZIA TERME
CDC VOR	TRANSITION ALT 6000
AIRSPACE CLASSIFICATION SEE AIP ENR 1.4	



CHANGE: VULKA 5A AND VULKA 3D WITHDRAWN

JAN 20
(CDC VOR)

BEARINGS TRACKS AND RADIAL ARE MAGNETIC
ALTITUDES AND ELEVATIONS ARE IN FEET
DISTANCES IN NAUTICAL MILES
SCALE 1:500.000

SUGEP Holding Procedure	ORTEV Holding Procedure	CDC VORTAC Holding Procedure

MNM SECT ALT 25 NM CDC

LINK ROUTES description**ARBUM 3A**

ARBUM – TR 136° (RDL 316 CDC VOR) – CDC VORTAC.

MEA: ARBUM-D27 CDC TACAN: TRL; D27 CDC TACAN – CDC VORTAC: 6000 FT

BAGIX 3A

BAGIX – TR 105° (RDL 285 CDC VOR) – CDC VORTAC.

MEL/MEA: BAGIX – CA361: FL 110; CA361-CDC VORTAC: 6000 FT

DELIK 3A

DELIK – TR 299° (RDL 119 CDC VOR) – CDC VORTAC.

MEA: DELIK–CDC VORTAC: MEA 6000

GIROV 3A

GIROV – TR 126° (RDL 306 CDC VOR) – CDC VORTAC.

MEA: GIROV – CDC VORTAC: 6000 FT

KOGEB 2A

KOGEB – TR 243° (RDL 063 CDC VOR) – CDC VORTAC.

MEA: KOGEB–CDC VORTAC: 6000 FT

PIGER 5A

PIGER – TR 071° (RDL 251 CDC VOR) – CDC VORTAC.

MEL/MEA: PIGER – CA364: FL110; CA364-CDC VORTAC: 6000 FT

RAPIS 4A

RAPIS – TR 330° (RDL 150 CDC VOR) – CDC VORTAC.

MEL/MEA: RAPIS – CA367 : FL110; CA367-CDC VORTAC: 6000 FT

RCA 5A

RCA VOR – RDL 036 RCA VOR (RDL 216 CDC VOR) – CDC VORTAC.

MEL/MEA: RCA VOR – CA366: FL110; CA366-CDC VORTAC: 6000 FT

**STAR****ARBUM 3D (ATC discretion)**

ARBUM – TR 136° (RDL 316 CDC VOR) until 27 NM CDC TACAN (17 NM LMT DME) then turn right to join ARC 15 NM LMT DME; crossing RDL 283 LMT VOR turn left until joining RDL 273 LMT VOR (TR 093°) bound to SUGEP.

MEA: ARBUM-RDL316/27 NM CDC VORTAC: TRL; RDL316/27NM CDC VORTAC-INT ARC D15 LMT DME/R297 LMT VOR:6000FT;
INT ARC D15 LMT DME/R297 LMT VOR–SUGEP: 4000 FT**BAGIX 3D (ATC discretion)**

BAGIX – TR 105° (RDL 285 CDC VOR) until 27 NM CDC TACAN then turn left to join ARC 25 NM CDC TACAN; crossing RDL 290 CDC VOR turn right until joining RDL 273 LMT VOR (TR 093°) bound to SUGEP.

MEL/MEA: BAGIX – CA361: FL110; CA361 – SUGEP: 4000 FT

CDC 2J

CDC VOR – RDL 073 CDC VOR until 10 NM CDC TACAN (16 NM LMT DME), then turn left until joining LAM LOC (TR 275°) bound to ORTEV.

MEA: CDC VOR – ORTEV: 6000 FT

CDC 2K

CDC VOR – RDL 288 CDC VOR until 20 NM CDC TACAN (14 NM LMT DME), then turn right until joining RD 273 LMT VOR (TR 093°) bound to SUGEP.

MEA: CDC VORTAC – 10 NM CDC TACAN: 6000 FT; 10 NM CDC TACAN - SUGEP: 4000 FT

CRN 2B (ATC discretion)

CRN VOR – RDL 243 CRN VOR (RDL 063 CDC VOR) – CA369 then turn right until joining LAM LOC (TR 275°) bound to ORTEV.

MEA: CRN VORDME – ORTEV: 6000 FT

DELIK 4B (ATC discretion)

DELIK – then turn right to join ARC 13 NM CDC TACAN until joining LAM LOC (TR 275°) bound to ORTEV.

MEL/MEA: DELIK – ORTEV: 6000 FT

GIROV 3D (ATC discretion)

GIROV – TR 126° (RDL 306 CDC VOR) - APVAR then turn right to join ARC 15 NM LMT DME; crossing RDL 283 LMT VOR turn left until joining RDL 273 LMT VOR (TR 093°) bound to SUGEP.

MEA: GIROV-APVAR: 6000FT; APVAR – SUGEP: 4000 FT

PIGER 3D (ATC discretion)

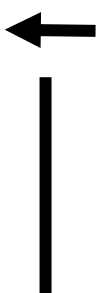
PIGER – TR 071° (RDL 251 CDC VOR) until 27 NM CDC TACAN, then turn left to join ARC 25 NM CDC TACAN; crossing RDL 290 CDC VOR turn right until joining RDL 273 LMT VOR (TR 093°) bound to SUGEP.

MEL/MEA: PIGER – CA363: FL110; CA363–SUGEP: 4000 FT

RAPIS 5B (ATC discretion)

RAPIS – TR 330° (RDL 150 CDC VOR) until 15 NM CDC TACAN, then turn right to join ARC 13 NM CDC TACAN until joining LAM LOC (TR 275°) bound to ORTEV.

MEL/MEA: RAPIS – RDL150/15 NM CDC VORTAC: FL110; RDL150/15 NM CDC VORTAC – CA368: FL110; CA368-ORTEV: 6000 FT



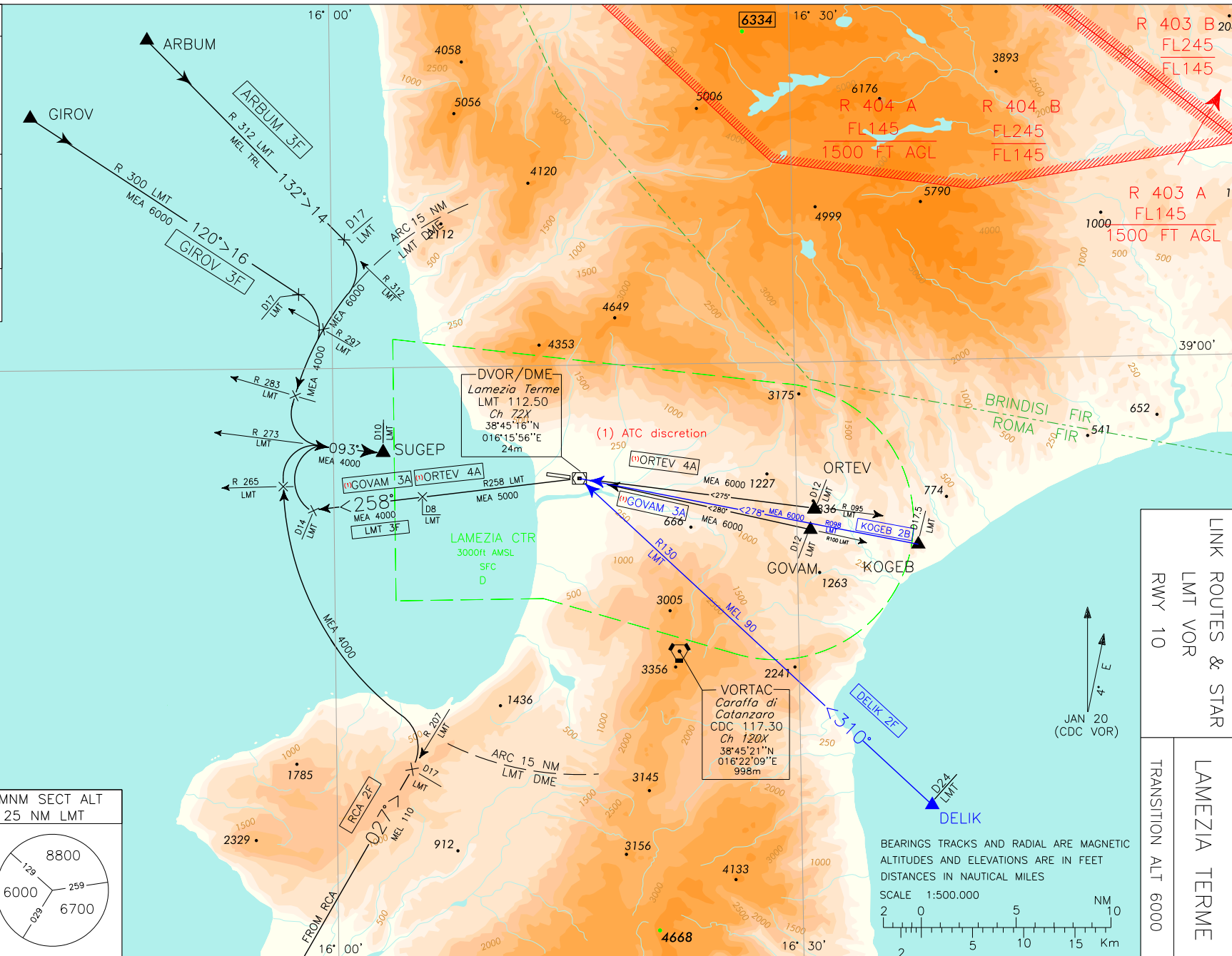
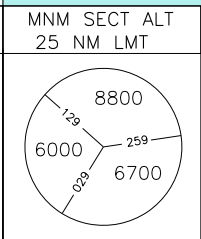
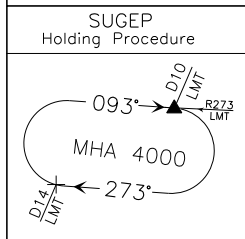
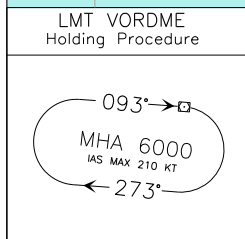
Waypoint	Latitude	Longitude
CA361	N38581738	E015334647
CA363	N38424072	E015502293
CA364	N38411242	E016023567
CA366	N38394504	E016160721
CA367	N38383693	E016262958
CA368	N38373701	E016353003
CA369	N38511919	E016394541

CHANGE: MAG VAR AND BOX FREQ UPDATED

ENAV - Roma

AIRAC effective date 02 DEC 2021 (A11/21)

FREQUENCIES	
APP Roma Radar	118.800 (133.250)
TWR Lamezia TWR	125.900 122.100
ATIS Lamezia Terminal Information	119.930
LEGEND	
LINK ROUTES	
STAR	
STAR ATC DISCRETION	
NOT TO SCALE	
AIRSPACE CLASSIFICATION	
SEE AIP ENR 1.4	



LINK ROUTES & STAR
RMY 10
LAMEZIA TERME
TRANSITION ALT 6000

AD 2 LICA 4-5

AIP - Italia

BEARINGS TRACKS AND RADIAL ARE MAGNETIC
ALTITUDES AND ELEVATIONS ARE IN FEET
DISTANCES IN NAUTICAL MILES
SCALE 1:500,000

LINK ROUTES RWY 10 description**DELIK 2F**

DELIK – TR 310° (RDL 130 LMT VOR) – LMT VORDME.

MEL: DELIK – LMT VORDME: FL90

KOGEB 2B

KOGEB – TR 278° (RDL 098 LMT VOR) – LMT VORDME.

MEA: KOGEB – LMT VORDME: 6000 FT

STAR RWY 10 description**ARBUM 3F**

ARBUM – TR 132° (RDL 312 LMT VOR) until 17 NM LMT DME, then turn right to join ARC 15 NM LMT DME, crossing RDL 283 LMT VOR turn left until joining RDL 273 LMT VOR (TR 093°) bound to SUGEP.

MEA: ARBUM – INT ARC 15 NM LMT DME: TL; INT ARC 15 NM LMT DME - INT ARC 15 NM LMT DME/RDL 297 LMT VOR: 6000 FT;
INT ARC 15 NM LMT DME/RDL 297 LMT VOR - SUGEP: 4000FT

GIROV 3F

GIROV – TR 120° (RDL 300 LMT VOR) until 17 NM LMT DME then turn right to join ARC 15 NM LMT DME; crossing RDL 283 LMT VOR turn left until joining RDL 273 LMT VOR (TR 093°) bound to SUGEP.

MEA: GIROV - INT ARC 15 NM LMTDME/RDL 297 LMT VOR: 6000FT; INT ARC 15 NM LMTDME/RDL 297 LMT VOR – SUGEP:
4000FT

GOVAM 3A (ATC discretion – following missed approach)

GOVAM - RDL 100 LMT VOR (TR 280°) bound to LMT VOR to be left on RDL 258 until 14 NM LMT DME, then turn right to join RDL 273 LMT VOR (TR 093°) bound to SUGEP.

MEA: GOVAM – LMT VOR: 6000 FT; LMT VOR – RDL 258/8 NM LMT VOR/DME: 5000 FT; RDL 258/8 NM LMT VOR/DME – SUGEP:
4000 FT

LMT 3F

LMT VORDME - RDL 258 LMT VOR until 14 NM LMT DME, then turn right to join RDL 273 LMT VOR (TR 093°) bound to SUGEP

MEL/MEA: LMT VOR – RDL 258/8 NM LMT VOR/DME: 5000 FT; RDL 258/8 NM LMT VOR/DME – SUGEP: 4000 FT

ORTEV 4A (ATC discretion – following missed approach)

ORTEV – RDL 095 LMT VOR (TR 275°) to LMT VOR to be left on RDL 258 until 14 NM LMT DME, then turn right until joining RDL 273 LMT VOR (TR 093°) bound to SUGEP.

MEA: ORTEV – LMT VOR: 6000 FT; LMT VOR – RDL 258/8 NM LMT VOR/DME: 5000 FT; RDL 258/8 NM LMT VOR/DME – SUGEP:
4000 FT

RCA 2F

RCA VOR – TR 027° (RDL 207 LMT VOR) until 17 NM LMT DME, then turn left to join ARC 15 NM LMT DME, crossing RDL 265 LMT VOR turn right until joining RDL 273 LMT VOR (TR 093°) bound to SUGEP.

MEL/MEA: RCA VOR – RDL 207/17 NM LMT VORDME: FL 110; RDL 207/17 NM LMT VORDME – SUGEP 4000 FT

Intenzionalmente bianca

Intentionally left blank

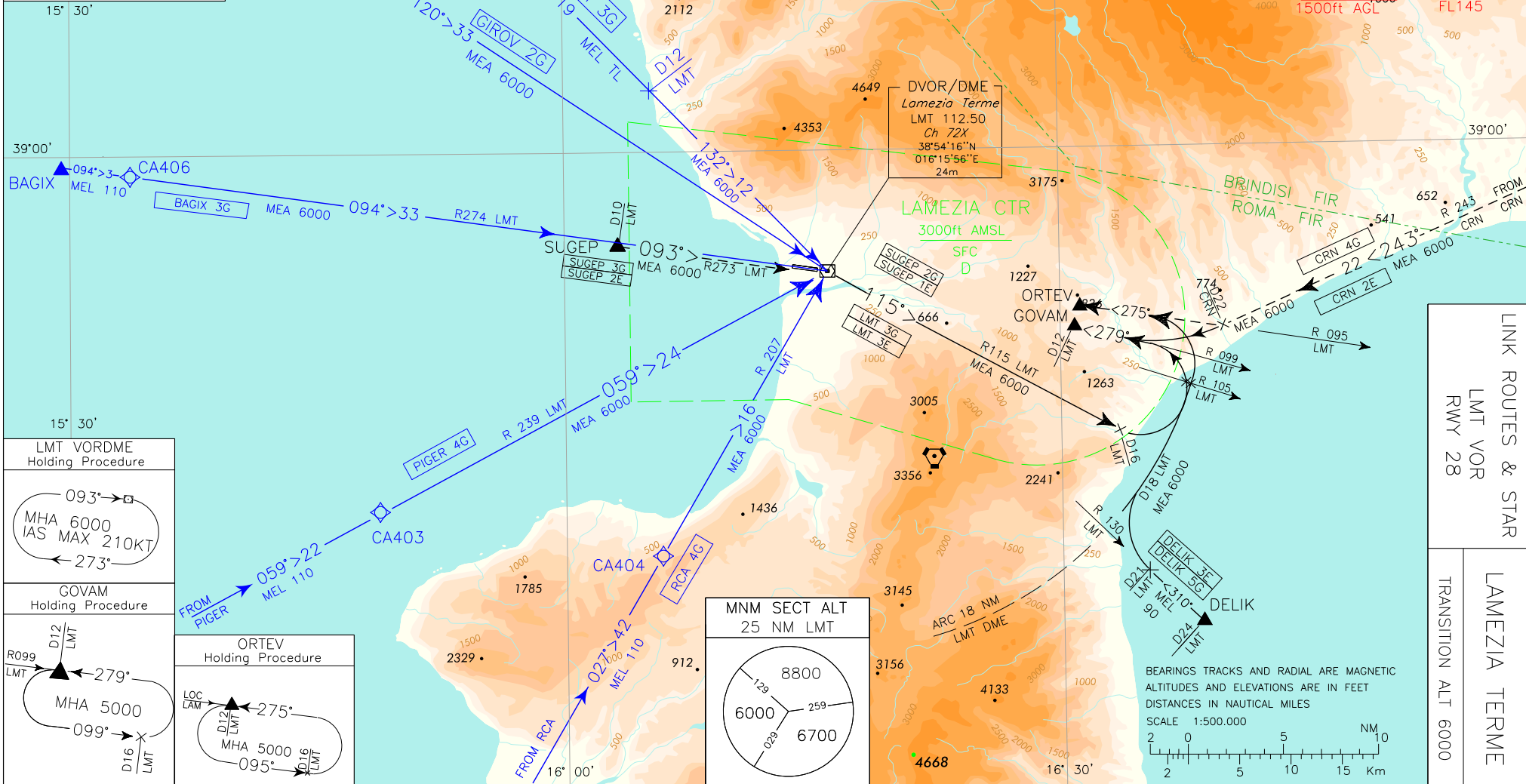
CHANGE: VULKA 4G WITHDRAWN

ENAV - Roma

AIP - Itolio

FREQUENCIES	
APP Roma radar	118.800 (133.250)
TWR Lamezia TWR	125.900 122.100
ATIS Lamezia Terminal Information	119.930
LEGEND	
LINK ROUTES	
STAR	
STAR ATC DISCRETION	
NOT TO SCALE	

AIRSPACE CLASSIFICATION
SEE AIP ENR 1.4

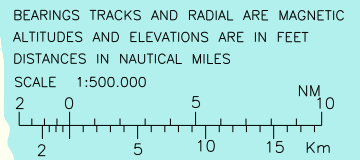
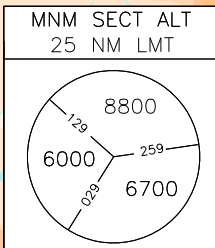


AIRAC effective date 11 AUG 2022 (A7/22)

AD 2 LICA 4-9

LINK ROUTES & STAR
LMT VOR
RWY 28

LAMEZIA TERME
TRANSITION ALT 6000



LINK ROUTES RWY 28**ARBUM 3G**

ARBUM – TR 132° (RDL 312 LMT VOR) - LMT VOR/DME.

MEA: ARBUM – RDL 312/12 NM LMT VOR/DME: TRL; RDL 312/12 NM LMT VOR/DME – LMT VOR/DME: 6000 FT

BAGIX 3G

BAGIX – RDL 274 LMT VOR (TR 094°) – LMT VOR/DME.

MEL/MEA: BAGIX – CA406: FL110; CA406 – LMT VOR/DME: 6000 FT

GIROV 2G

GIROV – TR 120° (RDL 300 LMT VOR) - LMT VOR/DME.

MEA: GIROV – LMT VOR/DME: 6000 FT

PIGER 4G

PIGER – RDL 239 LMT VOR (TR 059°) – LMT VOR/DME.

MEL/MEA: PIGER – CA403: FL110; CA403 – LMT VOR/DME: 6000 FT

RCA 4G

RCA VOR – RDL 027 RCA VOR (RDL 207 LMT VOR) - LMT VOR/DME.

MEL/MEA: RCA VOR – CA404: FL 110; CA404 – LMT VOR/DME: 6000 FT



STAR RWY 28 description**CRN 2E (ATC discretion)**

CRN – RDL 243 CRN VOR (TR243°) until 22 NM CRN DME, then turn right to join RDL 095 LMT VOR (TR 275°) bound to ORTEV.

MEL/MEA: CRN VOR/DME – ORTEV: 6000 FT

CRN 4G (ATC discretion)

CRN – RDL 243 CRN VOR (TR 243°) until 22 NM CRN DME, then turn right to join RDL 099 LMT VOR (TR 279°) bound to GOVAM.

MEL/MEA: CRN VOR/DME – GOVAM: 6000 FT

DELIK 3E

DELIK – TR 310° (RDL 130 LMT VOR) until 21 NM LMT DME, then turn right to join ARC 18 NM LMT DME; crossing RDL 105 LMT VOR, turn left to join RDL 095 LMT VOR (TR 275°) bound to ORTEV.

MEL/MEA: DELIK – RDL 130/21NM LMT VOR/DME: FL 90; RDL 130/21NM LMT VOR/DME – ORTEV: 6000FT

DELIK 5G

DELIK – TR 310° (RDL 130 LMT VOR) - until 21 NM LMT DME, then turn right to join ARC 18 NM LMT DME; crossing RDL 105 LMT VOR, turn left to join RDL 099 LMT VOR (TR 279°) bound to GOVAM.

MEL/MEA: DELIK – RDL 130/21NM LMT VOR/DME: FL 90; RDL 130/21NM LMT VOR/DME – GOVAM: 6000FT

LMT 3E

LMT VOR/DME – RDL 115 LMT VOR until 16 NM LMT DME, then turn left until joining RDL 095 LMT VOR (TR 275°) bound to ORTEV.

MEA: LMT VOR/DME – ORTEV: 6000 FT

LMT 3G

LMT VOR/DME – RDL 115 LMT VOR until 16 NM LMT DME, then turn left until joining RDL 099 LMT VOR (TR 279°) bound to GOVAM.

MEA: LMT VOR/DME – GOVAM 6000 FT

SUGEP 2E (ATC discretion – following missed approach)

SUGEP – TR 093° (RDL 273 LMT VOR) – Leave LMT VOR on RDL 115 until 16 NM LMT DME, then turn left until joining RDL 095 LMT VOR (TR 275°) bound to ORTEV.

MEA: SUGEP – ORTEV: 6000 FT

SUGEP 3G (ATC discretion – following missed approach)

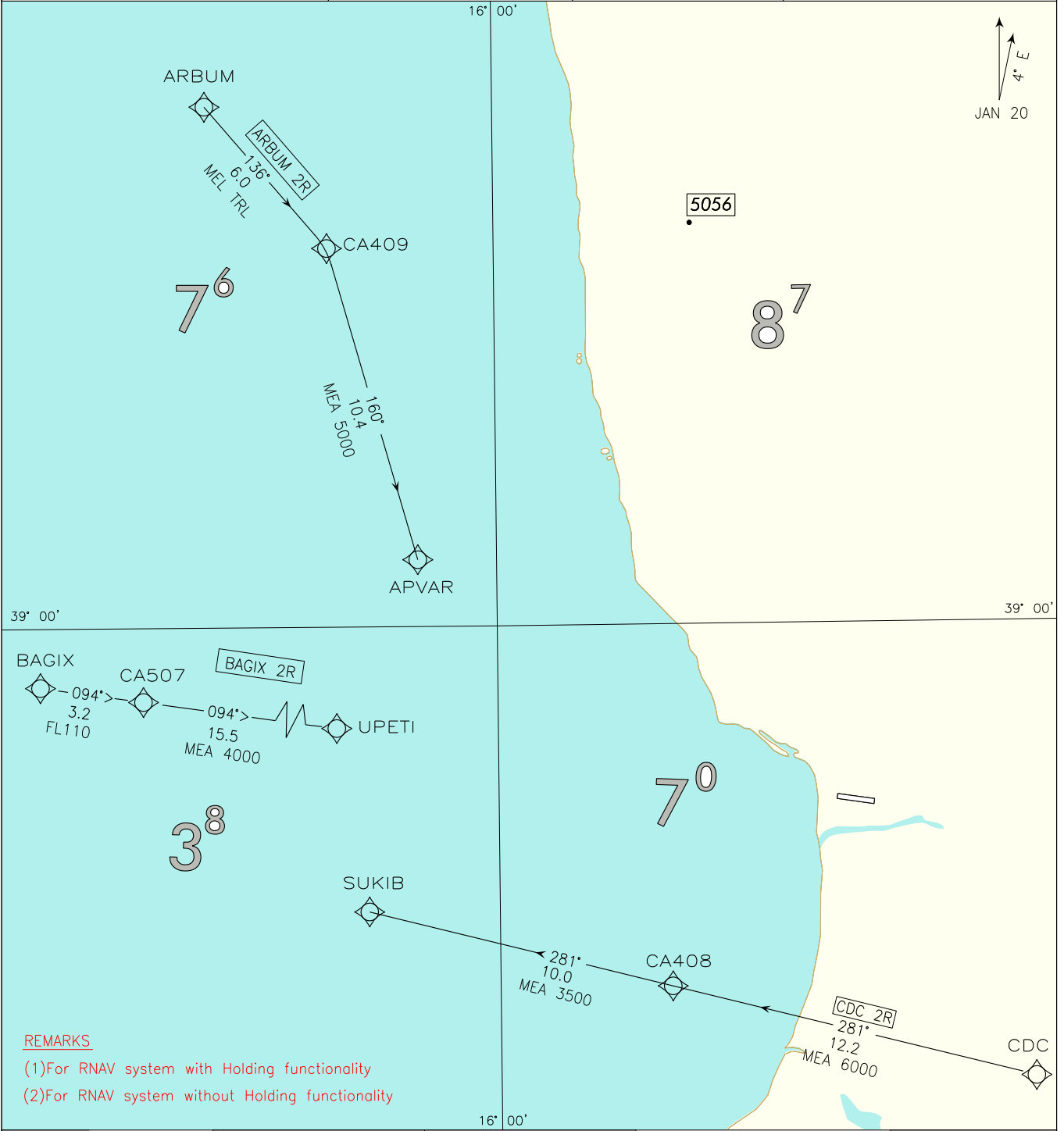
SUGEP – TR 093° (RDL 273 LMT VOR) – LMT VOR to be left on RDL 115 LMT VOR until 16 NM LMT DME, then turn left until joining RDL 099 LMT VOR (TR 279°) bound to GOVAM.

MEA: SUGEP – GOVAM: 6000 FT

Waypoint	Latitude	Longitude
CA403	N38430567	E015484573
CA404	N38405185	E016054809
CA406	N38585791	E015334193

FREQUENCIES APP Roma Radar 118.800 (133.250) TWR Lamezia TWR 125.900 122.100 ATIS Lamezia Terminal Information 119.930		AIRSPACE CLASSIFICATION SEE AIP ENR 1.4	STAR RNAV1/RNP1 RWY10	LAMEZIA TERME TRANSITION ALT 6000
--	--	---	------------------------------------	---

CHANGE: NAVIGATION REQUIREMENT



REMARKS

- (1) For RNAV system with Holding functionality
- (2) For RNAV system without Holding functionality

APVAR Holding Procedure 	SUKIB Holding Procedure 	UPETI Holding Procedure 	DISTANCES: NM ALTITUDES: FEET SCALE 1:350.000 	MSA 25NM LICA ARP
------------------------------------	------------------------------------	------------------------------------	---	-----------------------

LAMEZIA TERME
STAR RNAV1 RWY 10

ARBUM 2R

Path Terminator	Waypoint Identifier	Fly Over	Course °M(°T)	Magnetic Variation	Distance (NM)	Turn Direction	Altitude (ft)	Speed Limit (kt)	Navigation Specification
IF	ARBUM	-	-	-	-	-	-	-	RNAV1/RNP1 (1)
TF	CA409	-	136 (139.6)	+4.0	6.0	-	+TRL	-	RNAV1/RNP1 (1)
TF	APVAR	-	160 (164.2)	+4.0	10.4	-	+5000	-	RNAV1/RNP1 (1)

1) For “monitoring and alerting” reason, RNP1 specification is required in case of radar service unavailability or degradation

BAGIX 2R

Path Terminator	Waypoint Identifier	Fly Over	Course °M(°T)	Magnetic Variation	Distance (NM)	Turn Direction	Altitude (ft)	Speed Limit (kt)	Navigation Specification
IF	BAGIX	-	-	-	-	-	-	-	RNAV1/RNP1 (1)
TF	CA507	-	094 (98.0)	+4.0	3.2	-	+FL110	-	RNAV1/RNP1 (1)
TF	UPETI	-	094 (98.0)	+4.0	15.5	-	+4000	-	RNAV1/RNP1 (1)

1) For “monitoring and alerting” reason, RNP1 specification is required in case of radar service unavailability or degradation

CDC 2R

Path Terminator	Waypoint Identifier	Fly Over	Course °M(°T)	Magnetic Variation	Distance (NM)	Turn Direction	Altitude (ft)	Speed Limit (kt)	Navigation Specification
IF	CDC	-	-	-	-	-	-	-	RNAV1/RNP1 (1)
TF	CA408	-	281 (284.6)	+4.0	12.2	-	+6000	-	RNAV1/RNP1 (1)
TF	SUKIB	-	281 (284.6)	+4.0	10.0	-	+3500	-	RNAV1/RNP1 (1)

1) For “monitoring and alerting” reason, RNP1 specification is required in case of radar service unavailability or degradation

HOLDING RNAV1

Path Terminator	Waypoint Identifier	Inbound Course °M (°T)	Leg Distance (NM) (1)	Timing(min.)/Waypoint Distance (NM) (2)	Turn Direction	Minimum Altitude (FT)	Maximum Altitude (FL)	Speed Limit (kt)	Magnetic Variation (°)	Navigation Specification
HM	APVAR	110 (114)	3.0	- / 4.4	L	+5000	-	-210	+4.0	RNAV1/RNP1 (3)
HM	SUKIB	075 (079)	3.0	- / 4.2	R	+3500	-	-200	+4.0	RNAV1/RNP1 (3)
HM	UPETI	095 (099)	3.0	- / 4.4	L	+4000	-	-210	+4.0	RNAV1/RNP1 (3)

(1) RNAV system with holding functionality

(2) RNAV system without holding functionality

(3) For “monitoring and alerting” reason, RNP1 specification is required in case of radar service unavailability or degradation

WAYPOINT LIST

Waypoint Identifier	Coordinates
CA507	38°58'57.40" N 015°33'41.70" E
CA408	38°48'24.00" N 016°07'03.00" E
CA409	39°12'09.00" N 015°53'08.40" E