

SCALE 1:250.000



FIS Brindisi Information 131.125
 APP Brindisi Radar 118.750 (133.025)
 TWR Brindisi TWR 118.100/122.100
 ATIS Brindisi Terminal Information 119.215

AD ELEV
 46

L
 I
 B
 R

BRINDISI/CASALE

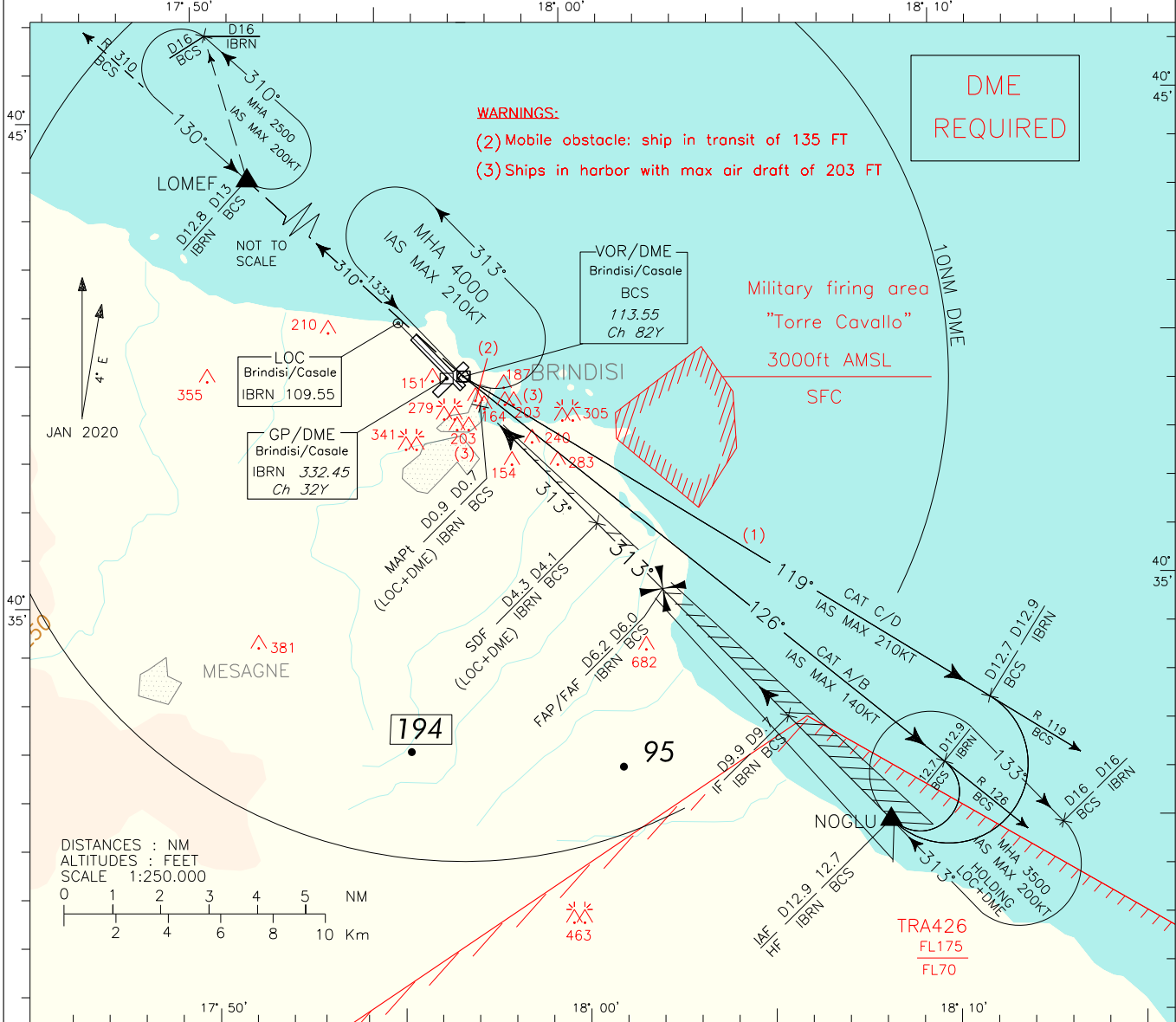
CHANGE: ULTRA LIGHT MACHINE ACTIVITY AREA 'MESSAPIA CORRIDOR' COMPLETELY WITHDRAWN AND UPDATED CHART



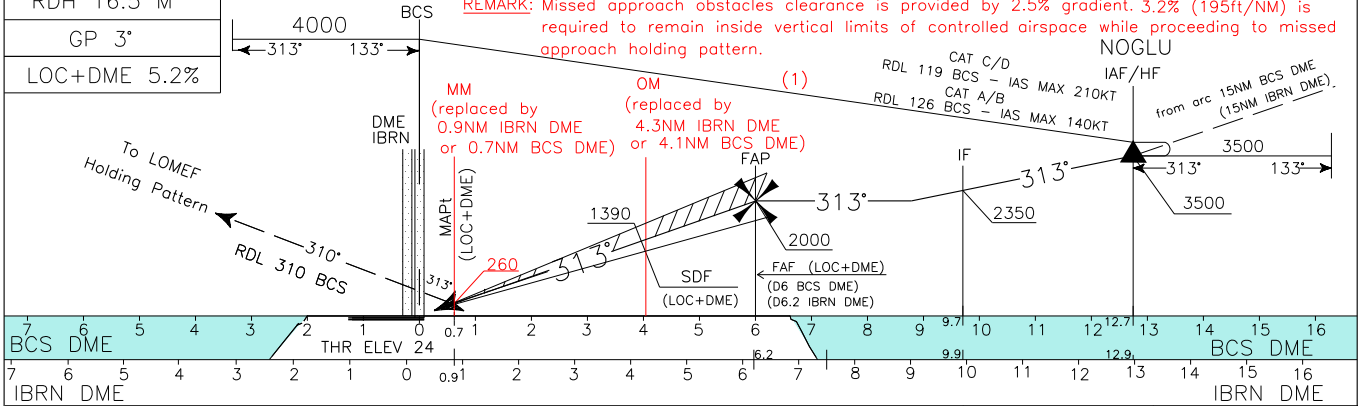
AIRSPACE CLASSIFICATION See AIP ENR 1.4	REMARK	WARNING
TRANSITION ALT 5000 FT		
ELEV AND ALT IN FT IF NOT OTHERWISE INDICATED		

CHANGE: THR 31 DISPLACED AND GP ANGLE MODIFIED - PROCEDURE REVISED - NEW WARNINGS ADDED and BOX FREQ UPDATED - DOC.8168-ED.6-2014 - AMDT 8

<p>(1) WARNING: for aircraft performing base turn leave 3500ft not before D12.9 IBRN DME (D12.7 BCS DME) established on LOC</p>	APP	Brindisi Radar	118.750	(133.025)	AD ELEV	46	LIBR	BRINDISI/CASALE ILS or LOC RWY 31
	TWR	Brindisi TWR	118.100	122.100				
	ATIS	Brindisi Terminal Information		119.215				



TRANSITION ALT 5000 MISSED APPROACH: Proceed on Track 313° until intercepting and follow RDL 310 BCS VOR (TR 310°) climbing to 2500 ft bound to LOMEF. Hold on RDL 310 BCS VOR (inbound TR 130°) between 13NM and 16NM BCS DME (12.8NM and 16NM IBRN DME) with left turn, IAS MAX 200KT.



STRAIGHT IN APPROACH	OCA (OCH)	A	B	C	D	<p>(*) REMARKS: (A) Circling procedure allowed North of RWY only. See also AD2 LIBR 8-1, 8-3 (B) IAS MAX 180 KT</p>	GS	FT per MIN	IBRN DME	ALT (HGT)	<p>MNM BCS</p> <p>SECT VOR</p>
	ILS	296 (272)	307 (283)	315 (291)	326 (302)		80	424	D6	1931(1907)	
CIRCLING (*)	LOC+DME	530 (506)				<p>NOT ALLOWED</p>	100	530	D5	1613(1589)	
							120	636	D4	1294(1270)	
							140	742	D3	976(952)	
							160	848	D2	657(633)	

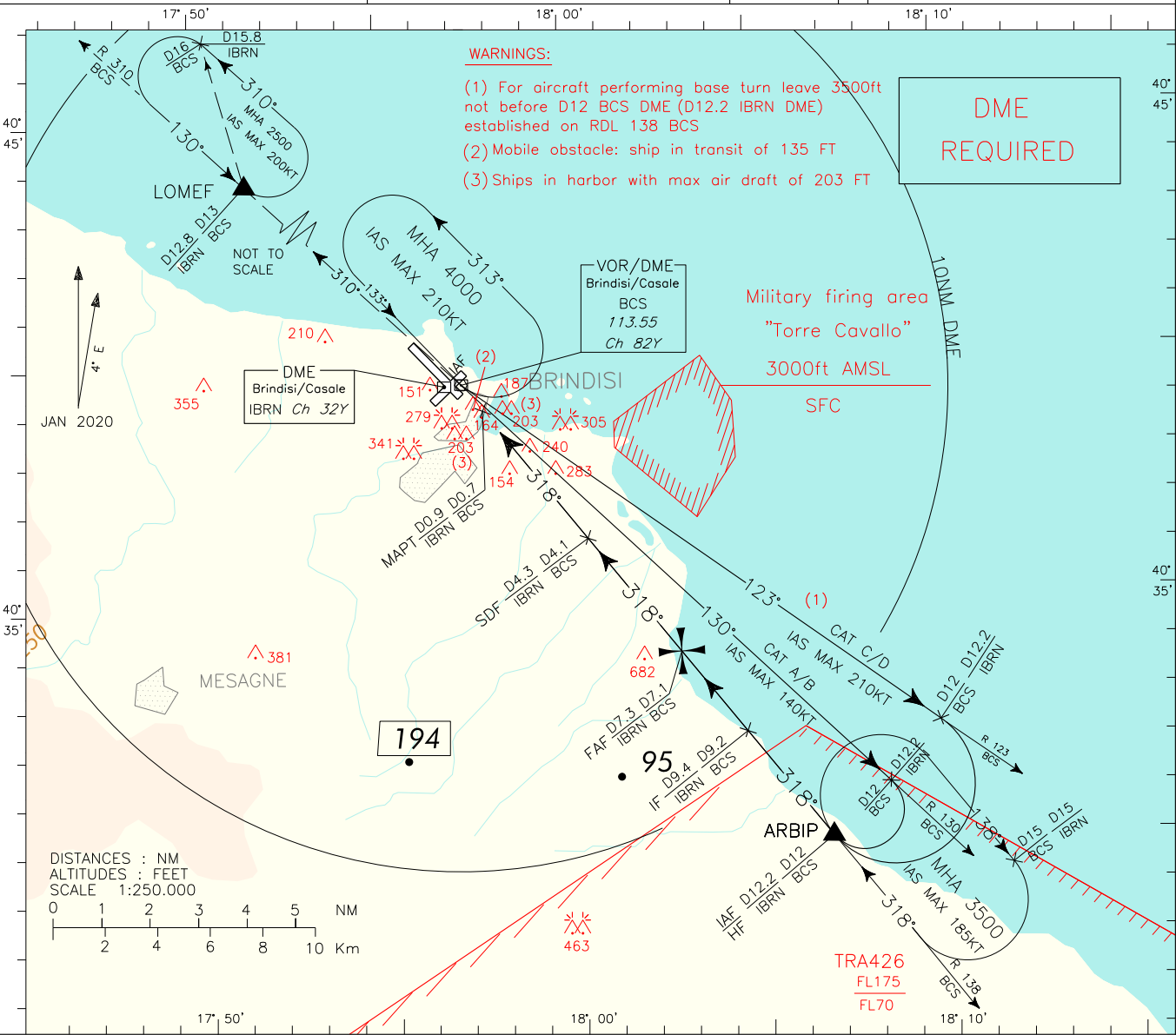
FIX/POINT	Coordinates (WGS84)
IAF (BCS VOR)	40°39'30.9"N 017°57'06.9"E
IAF NOGLU	40°30'05.7"N 018°08'16.1"E
IF	40°32'17.8"N 018°05'35.8"E
FAF	40°34'59.8"N 018°02'18.5"E
SDF (for LOC+DME) IBRN LOC/4.1NM BCS DME or 4.3NM IBRN DME	40°36'24.1"N 018°00'35.8"E
MAPt (LOC+DME)	40°38'53.5"N 017°57'33.6"E

REMARK:
 FINAL APPROACH TRACK OFFSET 5° SOUTH FROM RUNWAY CENTER LINE.
 FINAL APPROACH TRACK INTERCEPTS RWY CENTER EXTENSION 3742M BEFORE THRESHOLD.

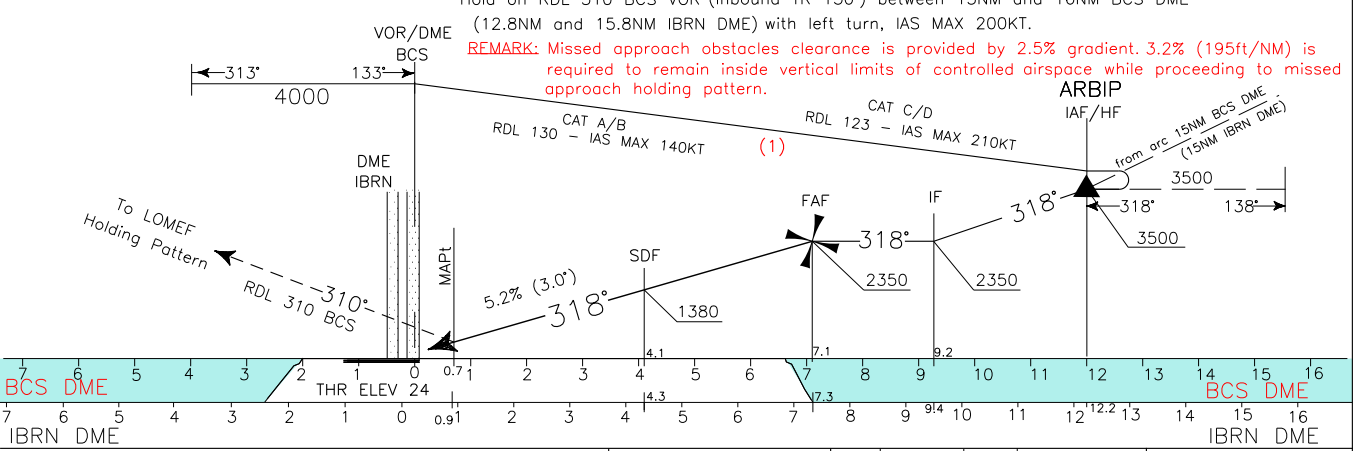
APP	Brindisi Radar	118.750 (133.025)	AD ELEV	46
TWR	Brindisi TWR	118.100 122.100		
ATIS	Brindisi Terminal Information	119.215		

LIBR	BRINDISI/CASALE	
	VOR	RWY 31

DOC.8168-ED.6-2014 - AMDT 8
 CHANGE: THR31 DISPLACED - PROCEDURE REVISED - NEW WARNINGS ADDED and BOX FREQ UPDATED




TRANSITION ALT 5000 MISSED APPROACH: On MAPT proceed on Track 310° (RDL 310 BCS VOR) bound to LOMEF, climbing to 2500 ft. Hold on RDL 310 BCS VOR (inbound TR 130°) between 13NM and 16NM BCS DME (12.8NM and 15.8NM IBRN DME) with left turn, IAS MAX 200KT.



BCS DME 7 6 5 4 3 2 1 0 0.71 2 3 4 5 6 7 8 9 9.4 10 11 12 12.2 13 14 15 16
 IBRN DME 7 6 5 4 3 2 1 0 0.91 2 3 4 5 6 7 8 9 9.4 10 11 12 12.2 13 14 15 16

STRAIGHT IN APPROACH	OCA (OCH)	A	B	C	D	GS	FT per MIN	BCS DME	ALT (HGT)	MNM SECT ALT BCS VOR
	VOR		530 (506)							
CIRCLING (*)						100	530	D6	1985(1961)	
						120	635	D5	1665(1641)	
						140	740	D4	1350(1326)	
		640 (594)		920 (874)	1010(964)	160	850	D3	1030(1006)	
							D2	710(686)		

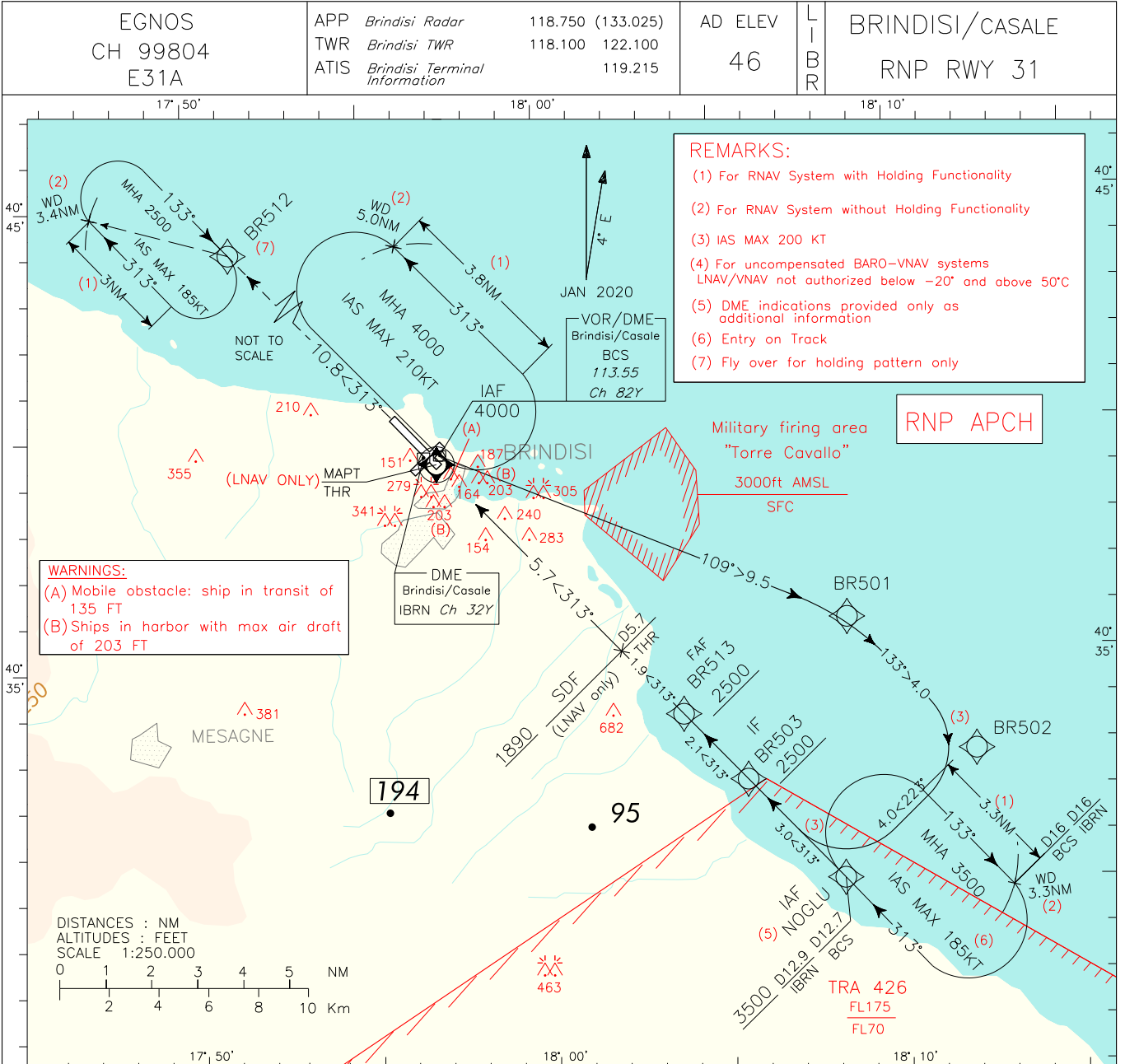
(*) REMARKS:
 (A) Circling procedure allowed North of RWY only.
 See also AD2 LIBR 8-1, 8-3
 (B) IAS MAX 180 KT



FIX/POINT	Coordinates (WGS84)
IAF (BCS VOR)	40°39'30.9"N 017°57'06.9"E
IAF ARBIP	40°30'01.9"N 018°06'45.8"E
IF	40°32'13.4"N 018°04'32.3"E
FAF	40°33'52.8"N 018°02'51.3"E
SDF (RDL138/4.1NM BCS VOR/DME or RDL138/4.3NM BCS VOR/IBRN DME)	40°36'17.2"N 018°00'24.3"E
MAPt	40°38'57.9"N 017°57'40.5"E

DOC.8168-ED.6-2014 - AMDT. 8

CHANGE: EGNOS CHANNEL ADDED



REMARKS:

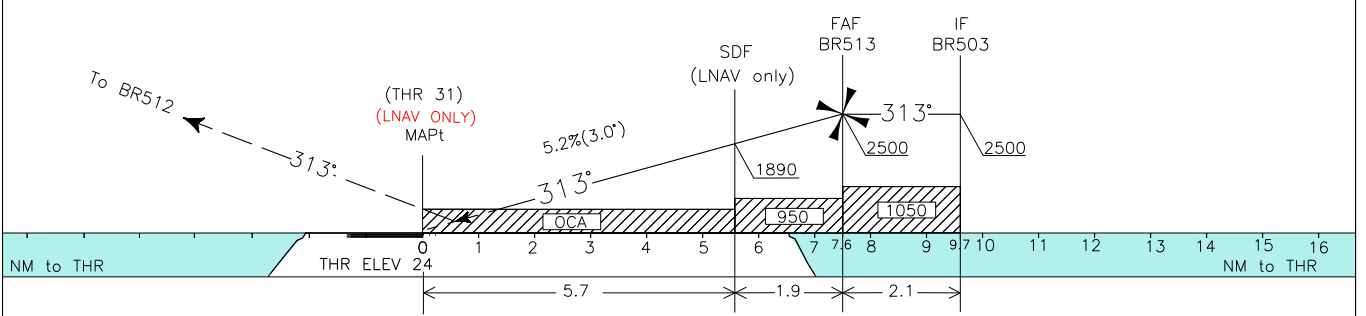
- (1) For RNAV System with Holding Functionality
- (2) For RNAV System without Holding Functionality
- (3) IAS MAX 200 KT
- (4) For uncompensated BARO-VNAV systems
LNAV/VNAV not authorized below -20' and above 50°C
- (5) DME indications provided only as additional information
- (6) Entry on Track
- (7) Fly over for holding pattern only


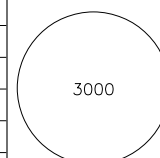
WARNINGS:

- (A) Mobile obstacle: ship in transit of 135 FT
- (B) Ships in harbor with max air draft of 203 FT

TRANSITION ALT 5000 MISSED APPROACH: Proceed on Track 313° climbing to 2500 ft, bound to BR512 holding pattern.
TCH 15 M

REMARK: Missed approach obstacles clearance is provided by 2.5% gradient. 3.2% (195ft/NM) is required to remain inside vertical limits of controlled airspace while proceeding to missed approach holding pattern.



STRAIGHT IN APPROACH	OCA (OCH)				REMARKS: (8) Circling procedure allowed North of RWY only. See also AD2 LIBR 8-1, 8-3 (9) IAS MAX 180 KT	GS	FT per MIN	FAF-THR	DIST THR	ALT (HGT)	MNM SECT ALT
	A	B	C	D							
LPV	296 (272)	307 (283)	315 (291)	326 (302)		80	425	5 : 43	D7	2302(2278)	
LNAV/VNAV	400 (376)	412 (388)	420 (396)	430 (406)		100	531	4 : 34	D6	1984(1960)	
LNAV	530 (506)					120	637	3 : 49	D5	1665(1641)	
						140	743	3 : 16	D4	1347(1323)	
CIRCLING (8)(9)	640 (594) 920 (874) 1010(964)				160	849	2 : 51	D3	1028(1004)		
								D2	710(686)		

TABULAR DESCRIPTION

RNP RWY31 – Instrument Approach procedure

Serial Number	Path Terminator	Waypoint Identifier	Fly Over	Course °M(°T)	Magnetic Variation	Distance (NM)	Turn Direction	Altitude (ft)	Speed Limit (kt)	VPA/TCH	Navigation Specification
010	IF	BCS	-	-	-	-	-	+4000	-	-	RNAV 1
020	TF	BR501	-	109 (113.3)	-	9.5	-	-	-	-	RNAV 1
030	TF	BR502	-	133 (137.2)	-	4.0	-	-	-200	-	RNAV 1
040	TF	NOGLU	-	223 (227.3)	-	4.0	R	+3500	-200	-	RNAV 1
050	TF	BR503	-	313 (317.2)	-	3.0	R	+2500	-	-	RNAV 1
010	IF	NOGLU	-	-	-	-	-	+3500	-	-	RNAV 1
020	TF	BR503	-	313 (317.2)	-	3.0	-	+2500	-	-	RNAV 1
010	IF	BR503	-	-	-	-	-	+2500	-	-	RNAV 1
020	TF	BR513	-	313 (317.2)	-	2.1	-	+2500	-	-	RNP APCH
030	TF	RWY31	Y	313 (317.2)	-	7.6	-	@73 (4)	-	-3.0/15.0M	RNP APCH
040	TF	BR512	-	313 (317.1)	-	10.8	-	+2500	-185	-	RNP APCH
050	HM	BR512	Y	133 (137)	-	-	R	+2500	-185	-	RNAV 1

Path Terminator	Waypoint Name	Inbound Course °M (°T)	Leg Distance (NM) (1)	Timing(min.)/Waypoint Distance (NM) (2)	Turn Direction	Minimum Altitude (FT)	Maximum Altitude (FL)	Speed Limit (kt)	Magnetic Variation (°)	Navigation Performance
HM	BCS	133(137)	3.8	-/5.0	L	+4000	-	-210	4	RNAV 1
HM	NOGLU (3)	313(317)	3.3	-/3.3	R	+3500	-	-185	4	RNAV 1
HM	BR512	133(137)	3.0	-/3.4	R	+2500	-	-185	4	RNAV 1

(1) RNAV system with holding functionality

(2) RNAV system without holding functionality

(3) Entry on Track

(4) THR Altitude plus TCH; for MA transition the value is according to the minima LNAV or LPV

Waypoints Table formatted according ARINC 424 standards

Waypoint	Latitude	Longitude
BR501	N40354490	E018083312
BR502	N40324874	E018120696
BR503	N40321773	E018053572
BR512	N40472030	E017471287
BR513	N40335005	E018034346

SBAS FAS DATA BLOCK LIBR RNP RWY 31

Operation Type	0
SBAS Provider	1 (EGNOS)
Airport Identifier	LIBR
Runway	31
Runway Letter	0 (None)
Approach Performance Designator	0
Route Indicator	
Reference Path Data Selector	0
Reference Path Identifier	E31A
LTP/FTP Latitude	403925.1890N
LTP/FTP Longitude	0175654.8545E
LTP/FTP Ellipsoidal Height (metres)	48.3
FPAP Latitude	404032.4630N
Delta FPAP Latitude (seconds)	67.2740
FPAP Longitude	0175532.6425E
Delta FPAP Longitude (seconds)	-82.2120
Threshold Crossing Height	49.2
TCH Units Selector	0 (feet)
Glidepath Angle (degrees)	3.00
Course Width (metres)	105.00
Length Offset (metres)	8
HAL (metres)	40.0
VAL (metres)	35.0

Output data

Data Block	10 12 02 09 0C 1F 00 00 01 31 33 05 0A B6 72 11 8D E3 B3 07 E3 15 94 0D 02 B8 7D FD EC 01 2C 01 64 01 C8 AF 2E C7 50 80
Calculated CRC Value	2EC75080

Required Additional Data

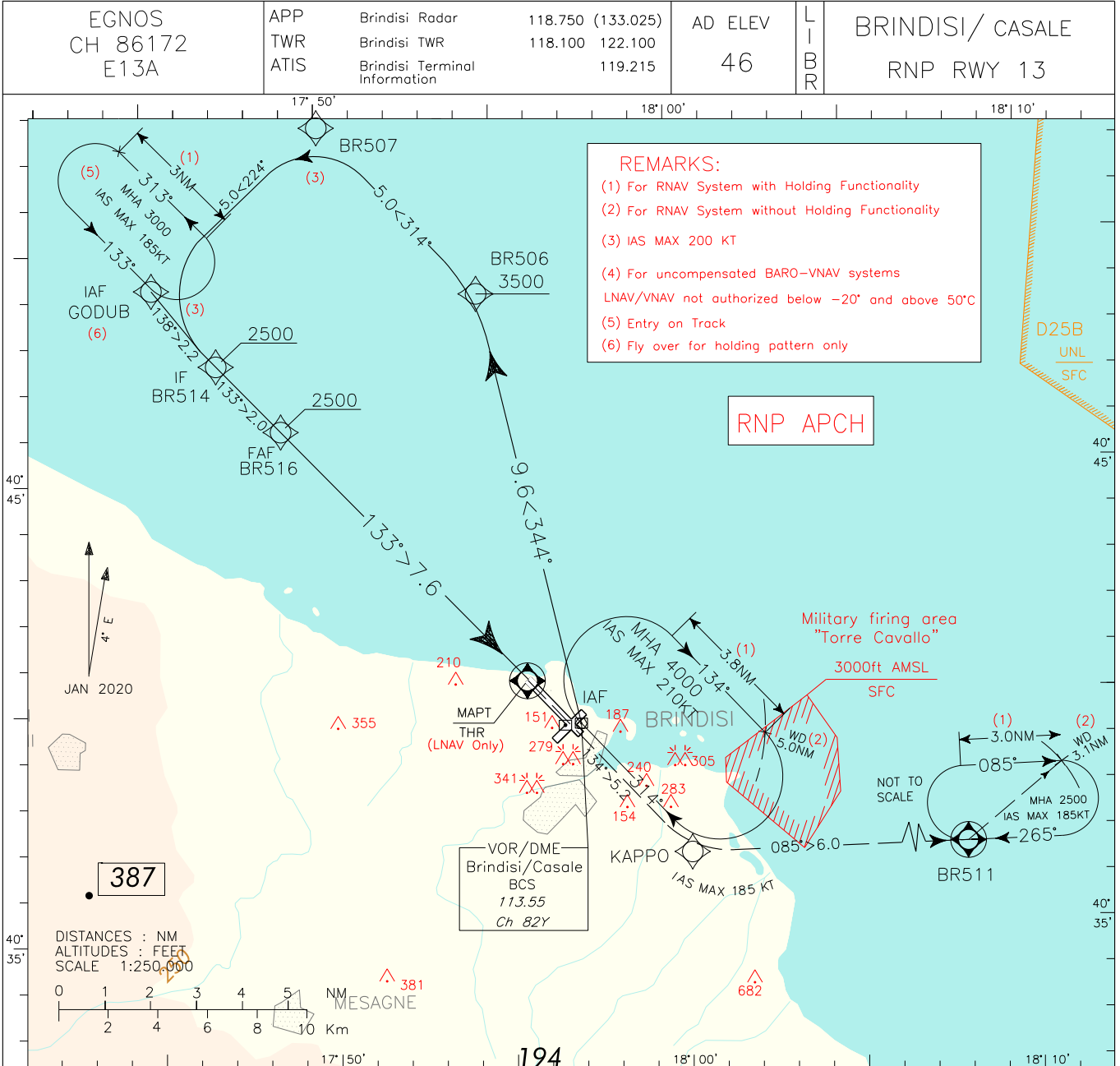
ICAO Code	LI
LTP/FTP Orthometric Height (metres)	7.3

Intenzionalmente bianca

Intentionally left blank

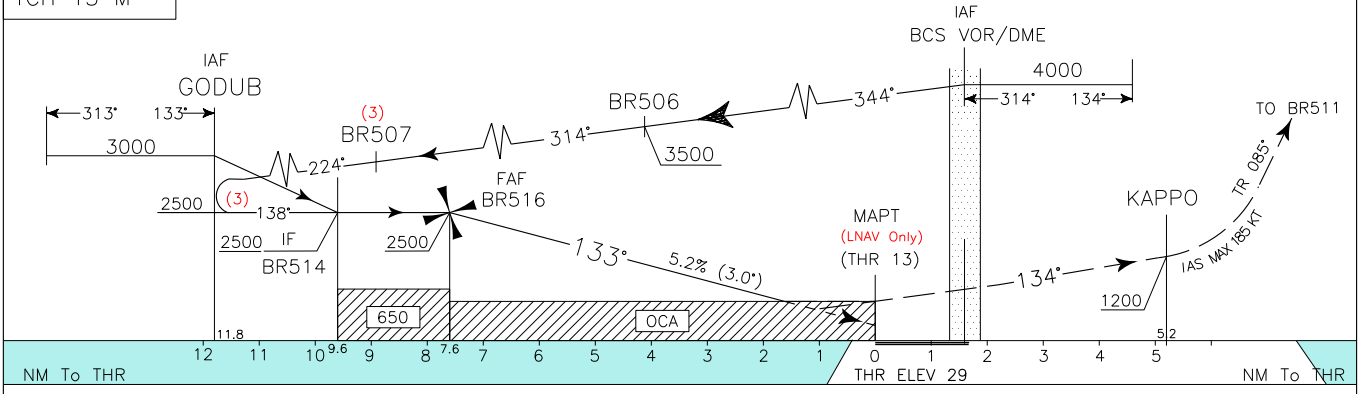
DOC.8168-ED.6-2014 - AMDT. 8

CHANGE: REPRINTING



TRANSITION ALT 5000 MISSED APPROACH: Proceed on Track 134° and climb to 2500 ft. At KAPPO turn left (IAS MAX 185 kt) on Track 085°, bound to BR511 holding pattern.

TCH 15 M



OCA (OCH)		A	B	C	D	REMARKS: (7) Circling procedure allowed North of RWY only. See also AD2 LIBR 8-1, 8-3 (8) IAS MAX 180KT	GS	FT per MIN	FAF-THR 7.6 NM	DIST THR 13	ALT (HGT)	MNM SECT ALT 25NM ARP
STRAIGHT IN APPROACH	LPV	280 (251)					80	425	5 : 42	D7	2307(2278)	
	LNAV/VNAV	290(261)	300(271)	310(281)	320(291)		100	531	4 : 34	D6	1988(1959)	
	LNAV	600 (571)					120	637	3 : 48	D5	1670(1641)	
CIRCLING (7)(8)		640 (594)	920 (874)	1010(964)		140	743	3 : 15	D4	1351(1322)		
						160	849	2 : 51	D3	1033(1004)		
									D2	714(685)		

TABULAR DESCRIPTION

RNP RWY13 – Instrument Approach procedure

Serial Number	Path Terminator	Waypoint Identifier	Fly Over	Course °M(°T)	Magnetic Variation	Distance (NM)	Turn Direction	Altitude (ft)	Speed Limit (kt)	VPA/ TCH	Navigation Specification
010	IF	BCS	-	-	-	-	-	+4000	-	-	RNAV 1
020	TF	BR506	-	344 (348.1)	-	9.6	-	+3500	-	-	RNAV 1
030	TF	BR507	-	314 (317.9)	-	5.0	-	-	-200	-	RNAV 1
040	TF	GODUB	-	224 (227.9)	-	5.0	L	+2500	-200	-	RNAV 1
050	TF	BR514	-	138 (142.2)	-	2.2	L	+2500	-	-	RNAV 1
010	IF	GODUB	-	-	-	-	-	+3000	-	-	RNAV 1
020	TF	BR514	-	138 (142.2)	-	2.2	-	+2500	-	-	RNAV 1
010	IF	BR514	-	-	-	-	-	+2500	-	-	RNAV 1
020	TF	BR516	-	133 (137.0)	-	2.0	-	+2500	-	-	RNP APCH
030	TF	RWY13	Y	133 (137.0)	-	7.6	-	@79 (4)	-	-3.0/15.0M	RNP APCH
040	TF	KAPPO	-	134 (137.8)	-	5.2	-	+1200	-185	-	RNP APCH
050	TF	BR511	Y	085 (089.5)	-	6.0	-	+2500	-185	-	RNAV 1
060	HM	BR511	Y	265 (269)	-	-	R	+2500	-185	-	RNAV 1

Path Terminator	Waypoint Name	Inbound Course °M (°T)	Leg Distance (NM) (1)	Timing(min.)/ Waypoint Distance (NM) (2)	Turn Direction	Minimum Altitude (FT)	Maximum Altitude (FL)	Speed Limit (kt)	Magnetic Variation (°)	Navigation Performance
HM	BCS	314(318)	3.8	- /5.0	R	+4000	-	-210	4°E	RNAV 1
HM	GODUB (3)	133(137)	3.0	-/-	L	+3000	-	-185	4°E	RNAV 1
HM	BR511	265(269)	3.0	- /3.1	R	+2500	-	-185	4°E	RNAV 1

(1) RNAV system with holding functionality

(2) RNAV system without holding functionality

(3) Entry on Track

(4) THR Altitude plus TCH; for MA transition the value is according to the minima LNAV or LPV

Waypoints Table formatted according ARINC 424 standards

Waypoint Identifier	Coordinates
BR506	40°48'55.20" N 017°54'30.27" E
BR507	40°52'37.84" N 017°50'05.30" E
BR514	40°47'30.46" N 017°47'00.39" E
BR516	40°46'02.70" N 017°48'48.14" E
BR511	40°36'42.26" N 018°08'02.71" E

SBAS FAS DATA BLOCK LIBR RNP RWY 13

PARAMETERS	VALUES
Operation Type	0
SBAS Provider	1 (EGNOS)
Airport Identifier	LIBR
Runway	13
Runway Letter	0 (None)
Approach Performance Designator	0
Route Indicator	
Reference Path Data Selector	0
Reference Path Identifier	E13A
LTP/FTP Latitude	404028.7615N
LTP/FTP Longitude	0175537.1680E
LTP/FTP Ellipsoidal Height (metres)	49.9
FPAP Latitude	403919.9700N
Delta FPAP Latitude (seconds)	-68.7915
FPAP Longitude	0175701.2300E
Delta FPAP Longitude (seconds)	84.0620
Threshold Crossing Height	49.2
TCH Units Selector	0 (feet)
Glidepath Angle (degrees)	3.00
Course Width (metres)	105.00
Length Offset (metres)	0
HAL (metres)	40.0
VAL (metres)	35.0

OUTPUT DATA

Data Block	10 12 02 09 0C 0D 00 00 01 33 31 05 B3 A6 74 11 A0 84 B1 07 F3 15 91 E6 FD BC 90 02 EC 01 2C 01 64 00 C8 AF E5 15 36 38
Calculated CRC Value	E5153638

Required Additional Data (not CRC wrapped)

Parameters	Values
ICAO Code	LI
LTP/FTP Orthometric Height (metres)	8.8

Intenzionalmente bianca

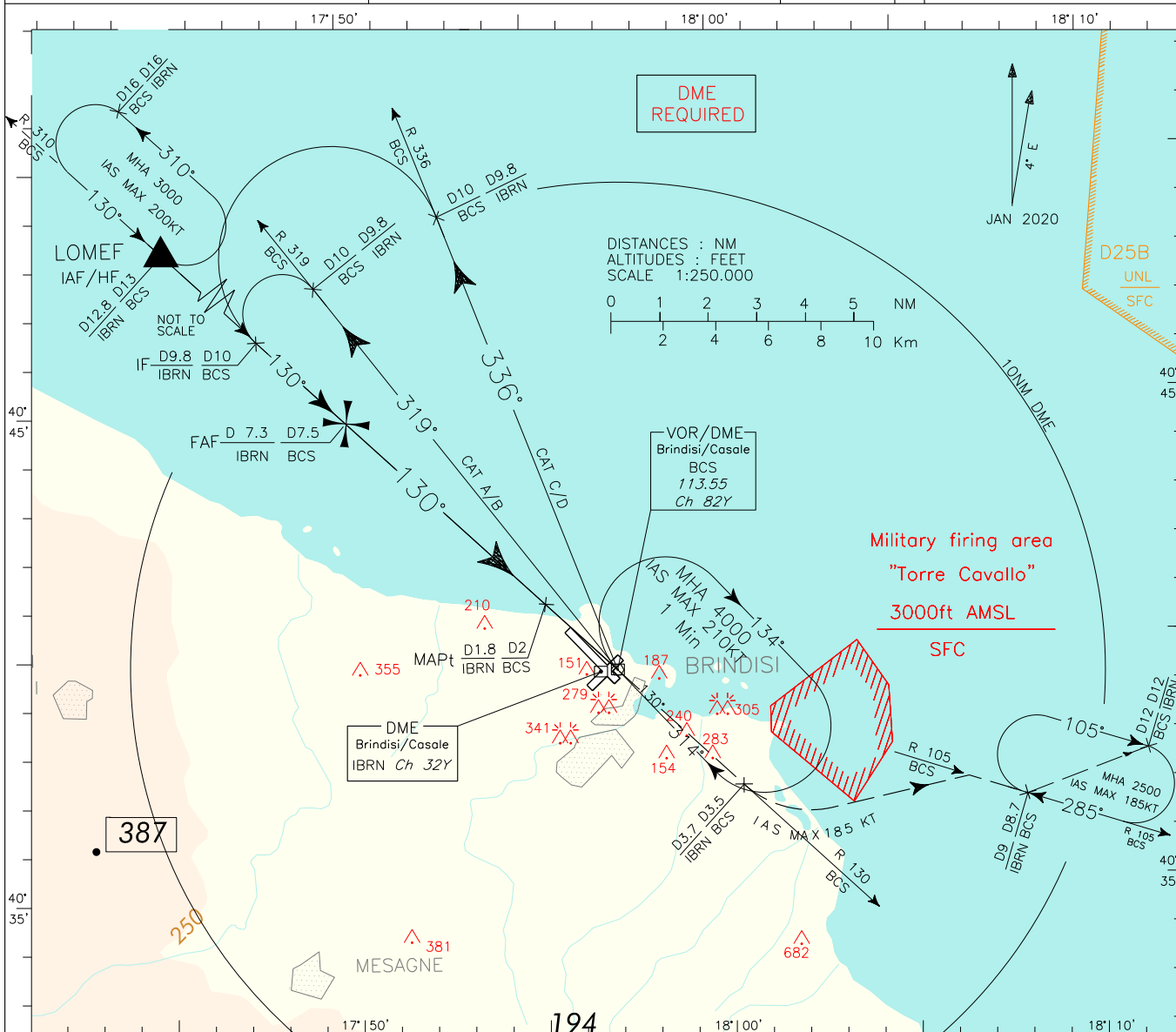
Intentionally left blank

REMARK:
 FINAL APPROACH TRACK OFFSET 3' SOUTH FROM RUNWAY CENTER LINE.
 FINAL APPROACH TRACK INTERCEPTS RWY CENTER EXTENSION 3490M BEFORE THRESHOLD.

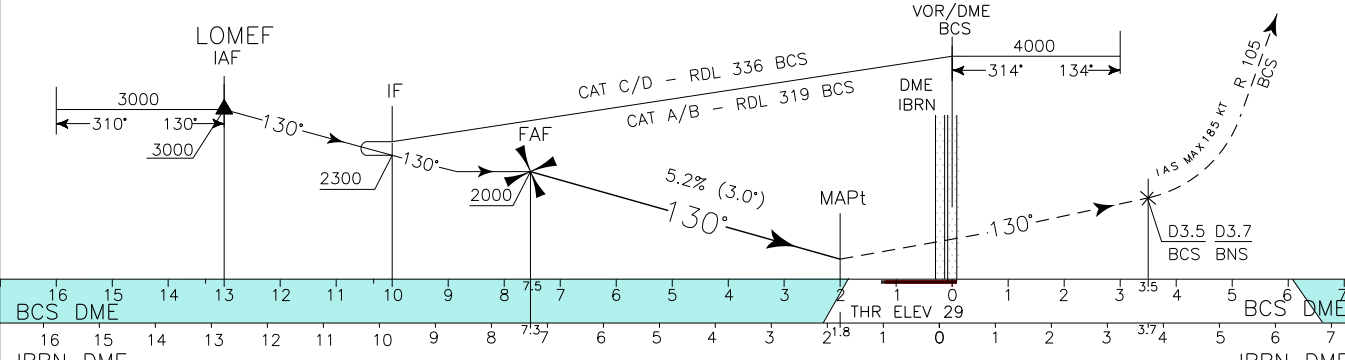
APP Brindisi Radar 118.750 (133.025)
 TWR Brindisi TWR 118.100 122.100
 ATIS Brindisi Terminal Information 119.215

AD ELEV 46
 L I B R
 BRINDISI/CASALE
 VOR RWY 13

DOC.8168-ED.6-2014 - AMDT 8
 CHANGE: BOX FREQ UPDATED and RENUMBERED PAGE



TRANSITION ALT 5000 MISSED APPROACH: Proceed on Track 130° climbing to 2500 ft. Passing BCS VOR continue on Track 130° (RDL 130 BCS VOR) until 3.5NM BCS DME (3.7NM IBRN DME) then turn left (IAS MAX 185 kt) to join and follow RDL 105 BCS VOR, bound to holding pattern. Hold on RDL 105 BCS VOR (inbound TR 285°) between 8.7NM and 12NM BCS DME (9NM and 12 NM IBRN DME) with right turn (IAS MAX 185 kt).



OCA (OCH)		A	B	C	D	(*) REMARK: (A) Circling procedure allowed North of RWY only. See also AD 2 LIBR 8-1, 8-3 (B) IAS MAX 180 KT	GS	FT per MIN	BCS DME	ALT(HGT)	MNM SECT ALT
STRAIGHT IN APPROACH	VOR	600 (571)						80	425	D7	1840(1811)
						100	530	D6	1520(1491)		
						120	635	D5	1200(1171)		
						140	740	D4	885(856)		
CIRCLING (*)		640 (594)		920 (874)	1010(964)		160	850			

FIX/POINT	Coordinates (WGS84)
IAF BCS VOR	40°39'30.9"N 017°57'06.9"E
IAF LOMEF	40°48'33.0"N 017°44'49.1"E
IF	40°46'28.0"N 017°47'39.7"E
FAF	40°44'44.3"N 017°50'00.9"E
MAPt	40°40'54.4"N 017°55'13.6"E