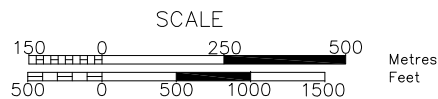
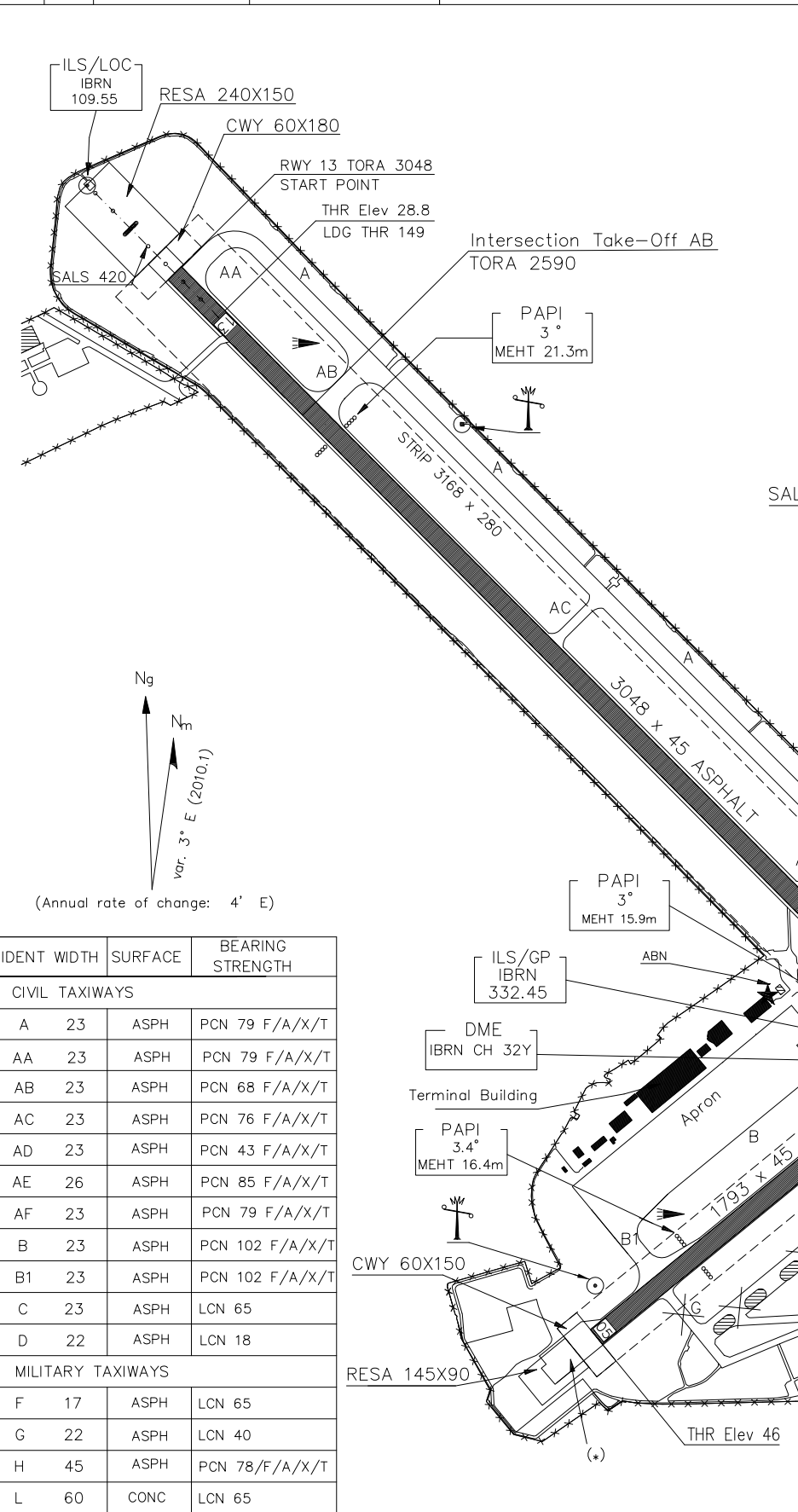


RWY	QFU	THR	BEARING STRENGTH	Bearings are magnetic Distances in metres Elevations in feet AMSL Coordinates WGS84	TWR 118,100 122,100 ATIS 119,215
05	50°	40°39'08.40"N 017°56'12.44"E	PCN 58/F/A/X/T		
23	230°	40°39'43.72"N 017°57'13.07"E	PCN 58/F/A/X/T	WARNING	
13	134°	40°40'28.76"N 017°55'37.17"E	PCN 94/F/A/X/T	RWY 05/23: Caution and visual reference are requested during landing RWY 23 and take-off from RWY 05 OPS due to possible presence of mobile obstacle (ship) in the last 550m before THR 23 RWY centerline reported in AOC type A AD 2 LIBR 3-3 (affecting also PAPI Obstacle Protection Surface)	
31	314°	40°39'25.19"N 017°56'54.85"E	PCN 94/F/A/X/T HEAD PCN 112/R/A/X/T		



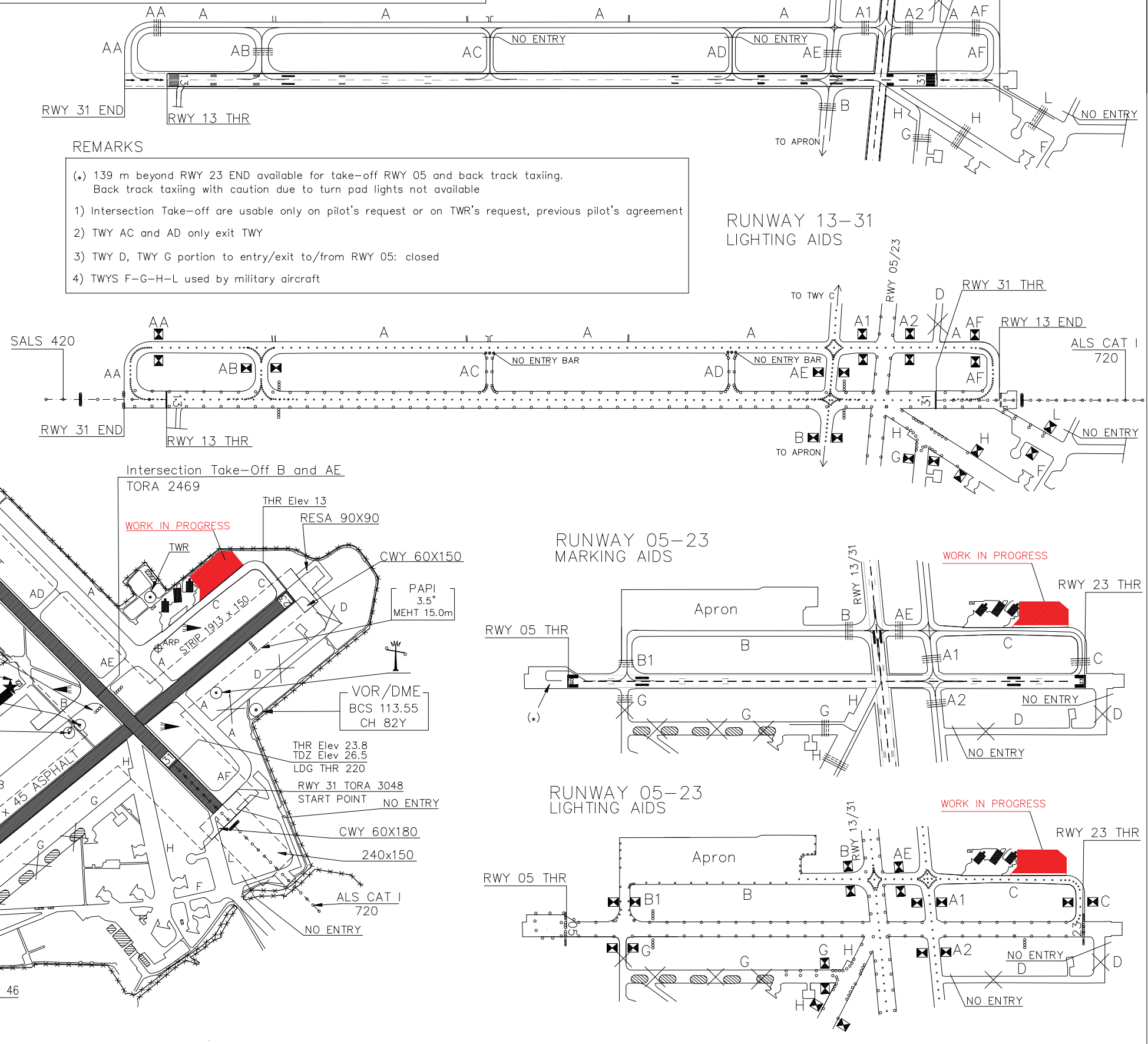
AD ELEV 46	BRINDISI / CASALE
APRON ELEV 30	
LIBR 40° 39' 38" N 017° 56' 53" E	

CHANGE: New layout



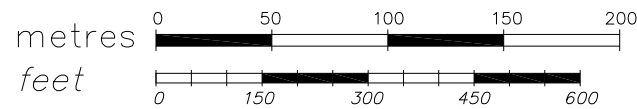
REMARKS

- (*) 139 m beyond RWY 23 END available for take-off RWY 05 and back track taxiing. Back track taxiing with caution due to turn pad lights not available
- 1) Intersection Take-off are usable only on pilot's request or on TWR's request, previous pilot's agreement
- 2) TWY AC and AD only exit TWY
- 3) TWY D, TWY G portion to entry/exit to/from RWY 05: closed
- 4) TWYS F-G-H-L used by military aircraft

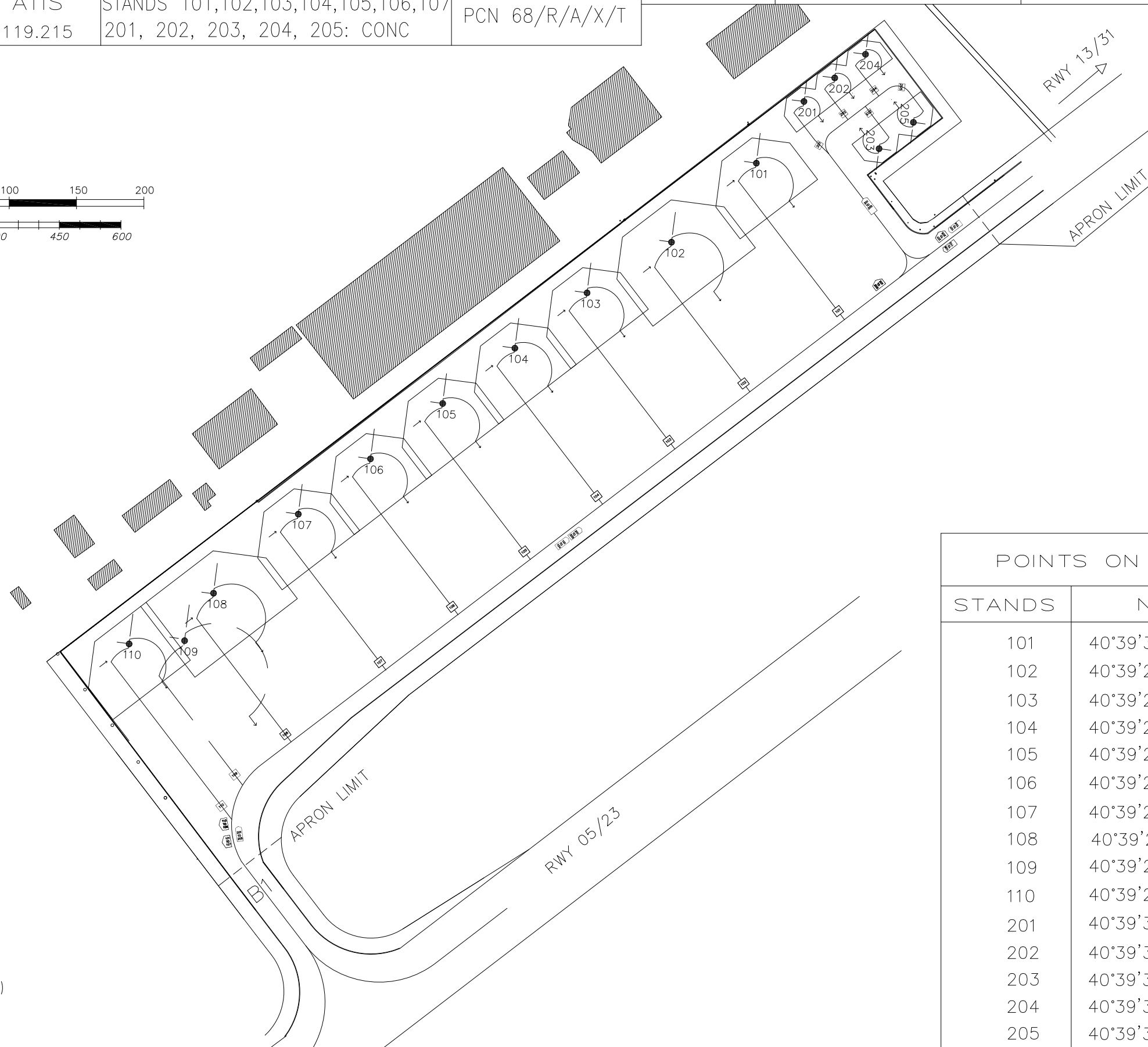
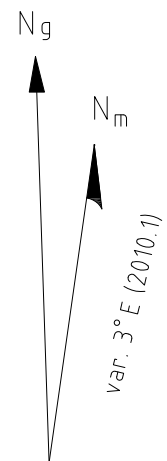


IDENT	WIDTH	SURFACE	BEARING STRENGTH
CIVIL TAXIWAYS			
A	23	ASPH	PCN 79 F/A/X/T
AA	23	ASPH	PCN 79 F/A/X/T
AB	23	ASPH	PCN 68 F/A/X/T
AC	23	ASPH	PCN 76 F/A/X/T
AD	23	ASPH	PCN 43 F/A/X/T
AE	26	ASPH	PCN 85 F/A/X/T
AF	23	ASPH	PCN 79 F/A/X/T
B	23	ASPH	PCN 102 F/A/X/T
B1	23	ASPH	PCN 102 F/A/X/T
C	23	ASPH	LCN 65
D	22	ASPH	LCN 18
MILITARY TAXIWAYS			
F	17	ASPH	LCN 65
G	22	ASPH	LCN 40
H	45	ASPH	PCN 78/F/A/X/T
L	60	CONC	LCN 65

Bearings are magnetic Distances in metres Elevation in FT AMSL Coordinates WGS84	TWR 118.100	Bearing surface STANDS 108, 109, 110: CONC STANDS 101,102,103,104,105,106,107 201, 202, 203, 204, 205: CONC	Strength PCN 120/R/A/W/T PCN 68/R/A/X/T	AD ELEV 46	BRINDISI / CASALE	
	APRON ELEV 30			LIBR	40°39'38" N 017°56'53" E	



CHANGE: Renumbered chart



POINTS ON PARKING AREA		
STANDS	N	E
101	40°39'30.86"	017°56'30.33"
102	40°39'29.15"	017°56'27.93"
103	40°39'28.04"	017°56'25.53"
104	40°39'26.84"	017°56'23.47"
105	40°39'25.65"	017°56'21.42"
106	40°39'24.45"	017°56'17.37"
107	40°39'23.24"	017°56'17.30"
108	40°39'21.52"	017°56'14.92"
109	40°39'20.54"	017°56'14.10"
110	40°39'20.44"	017°56'12.51"
201	40°39'32.19"	017°56'31.69"
202	40°39'32.70"	017°56'32.56"
203	40°39'31.17"	017°56'33.83"
204	40°39'33.22"	017°56'33.44"
205	40°39'31.74"	017°56'34.80"

AIRCRAFT PARKING DOCKING REMARKS					
STAND	ACFT CODE	DIMENSIONS RESTRICTIONS	SELF MANOEUVRING	PUSH BACK	REMARKS
APRON					
101	C	Max wing-span 36 m Max overall length 45 m	Yes	Not requested	NIL
102	D	Max wing-span 42 m Max overall length 55 m	Yes	Not requested	NIL
103	C	Max wing-span 36 m Max overall length 45 m	Yes	Not requested	NIL
104	C	Max wing-span 36 m Max overall length 45 m	Yes	Not requested	NIL
105	C	Max wing-span 36 m Max overall length 45 m	Yes	Not requested	NIL
106	C	Max wing-span 36 m Max overall length 45 m	Yes	Not requested	NIL
107	C	Max wing-span 36 m Max overall length 45 m	Yes	Not requested	NIL
108	D	Max wing-span 42 m Max overall length 55 m	Yes	Not requested	Cannot be operated when stand 109 engaged
109	E	Max wing-span 65 m Max overall length 71 m	Yes	Not requested	Cannot be operated when stand 108 or 110 engaged
110	C	Max wing-span 36 m Max overall length 45 m	Yes	Not requested	Cannot be operated when stand 109 engaged
201	A	Max wing-span 15 m Max overall length 16 m	Yes	Not requested	NIL
202	A	Max wing-span 15 m Max overall length 16 m	Yes	Not requested	NIL
203	A	Max wing-span 15 m Max overall length 16 m	Yes	Not requested	NIL
204	A	Max wing-span 15 m Max overall length 16 m	Yes	Not requested	NIL
205	A	Max wing-span 15 m Max overall length 16 m	Yes	Not requested	NIL

Intenzionalmente bianca

Intentionally left blank