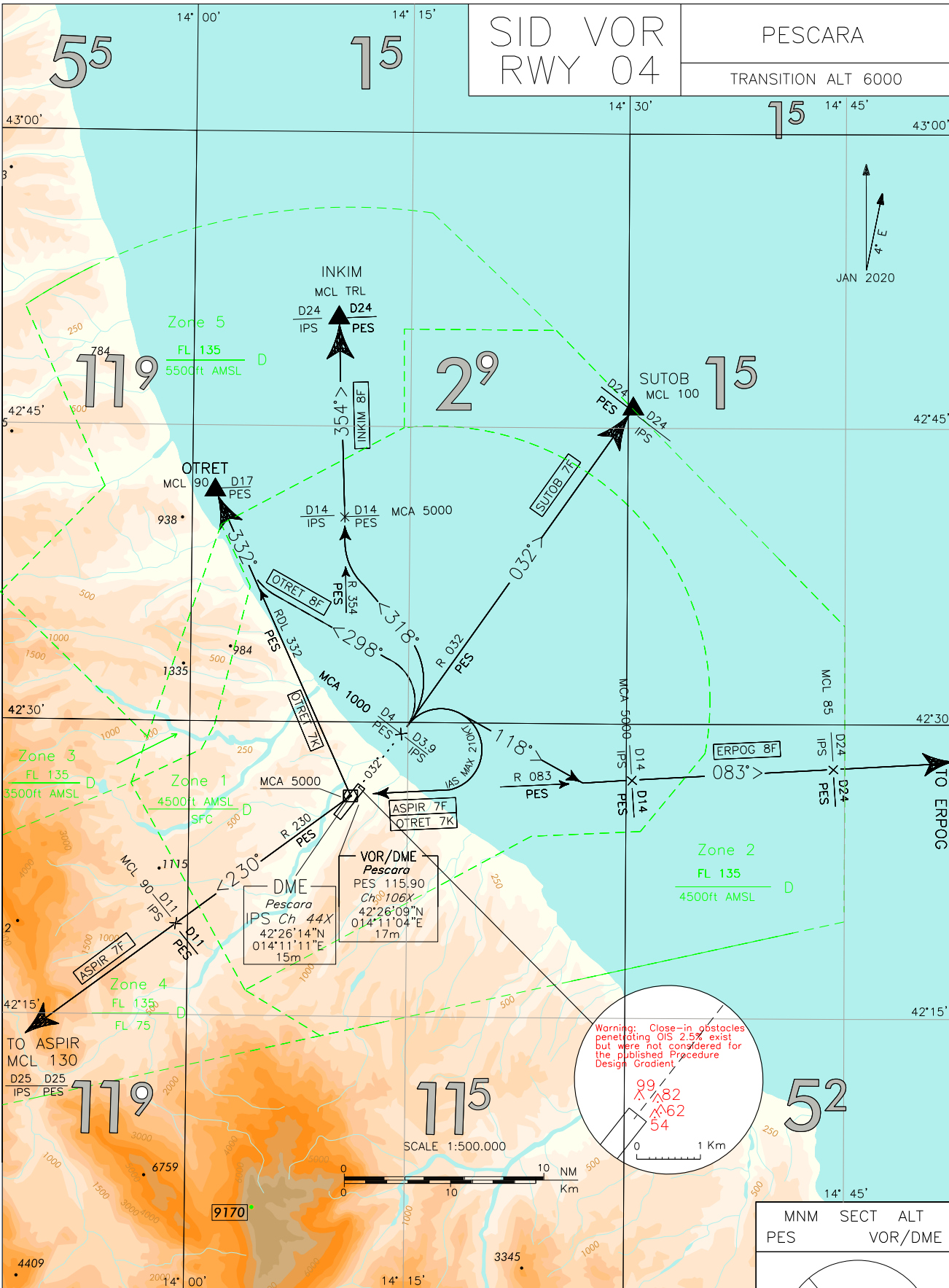


SID VOR
RWY 04

PESCARA

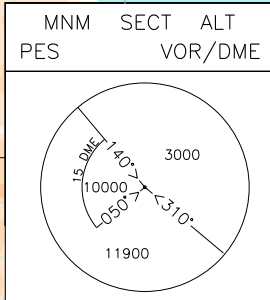
TRANSITION ALT 6000



CHANGE: MSA UPDATED

FREQUENCIES	
TWR Pescara TWR	118.450
APP Pescara APP	120.050

LEGEND	
	SID
	Initial climb



INITIAL CLIMB PROCEDURE RWY 04

After take-off, proceed on RDL 032 PES VOR until 4 NM PES DME (or 3.9 NM IPS DME) to be crossed at 1000FT or above, then follow the assigned SID.

REMARKS

1. **Minimum climb gradient: 300 ft/NM (5%).**
2. **In case of PES or IPS DME unavailability proceed on RDL 032 PES VOR then, passing 1000FT, turn according to the assigned SID.**

WARNING

Close-in obstacles penetrating OIS 2.5% exist, but they were not considered for the published procedure design required.

SID DESCRIPTION

Initial climb procedure completed:

ASPIR 7F

Turn right (IAS MAX 210kt during turn) bound to PES VOR. Leave PES VOR on RDL 230 (TR 230°) bound to ASPIR.

MCA/MCL: PES VOR/DME: 5000 FT; RDL 230/11 NM PES VOR/DME (or RDL 230 PES VOR/11 NM IPS DME): FL 90; ASPIR: FL 130

ERPOG 8F

Turn right (IAS MAX 210kt during turn) on TR 118° until joining RDL 083 PES VOR (TR 083°) bound to ERPOG.

MCA/MCL: RDL 083/14 NM PES VOR/DME (or RDL 083 PES VOR/14 NM IPS DME): 5000 FT; RDL 083/24 NM PES VOR/DME (or RDL 083 PES VOR/24 NM IPS DME): FL 85

INKIM 8F

Turn left on TR 318° until joining RDL 354 PES VOR (TR 354°) bound to INKIM.

MCA/MCL: RDL 354 /14 NM PES VOR/DME (or RDL 354 PES VOR/14 NM IPS DME): 5000 FT; INKIM: TRL

OTRET 8F

Turn left on TR 298° until joining RDL 332 PES VOR (TR 332°) bound to OTRET.

MCL: OTRET: FL 90

OTRET 7K

Turn right (IAS MAX 210kt during turn) bound to PES VOR. Leave PES VOR on RDL 332 (TR 332°) bound to OTRET.

MCA/MCL: PES VOR/DME: 5000 FT; OTRET: FL 90

SUTOB 7F

Proceed on TR 032° (RDL 032 PES VOR) bound to SUTOB.

MCL: SUTOB: FL 100

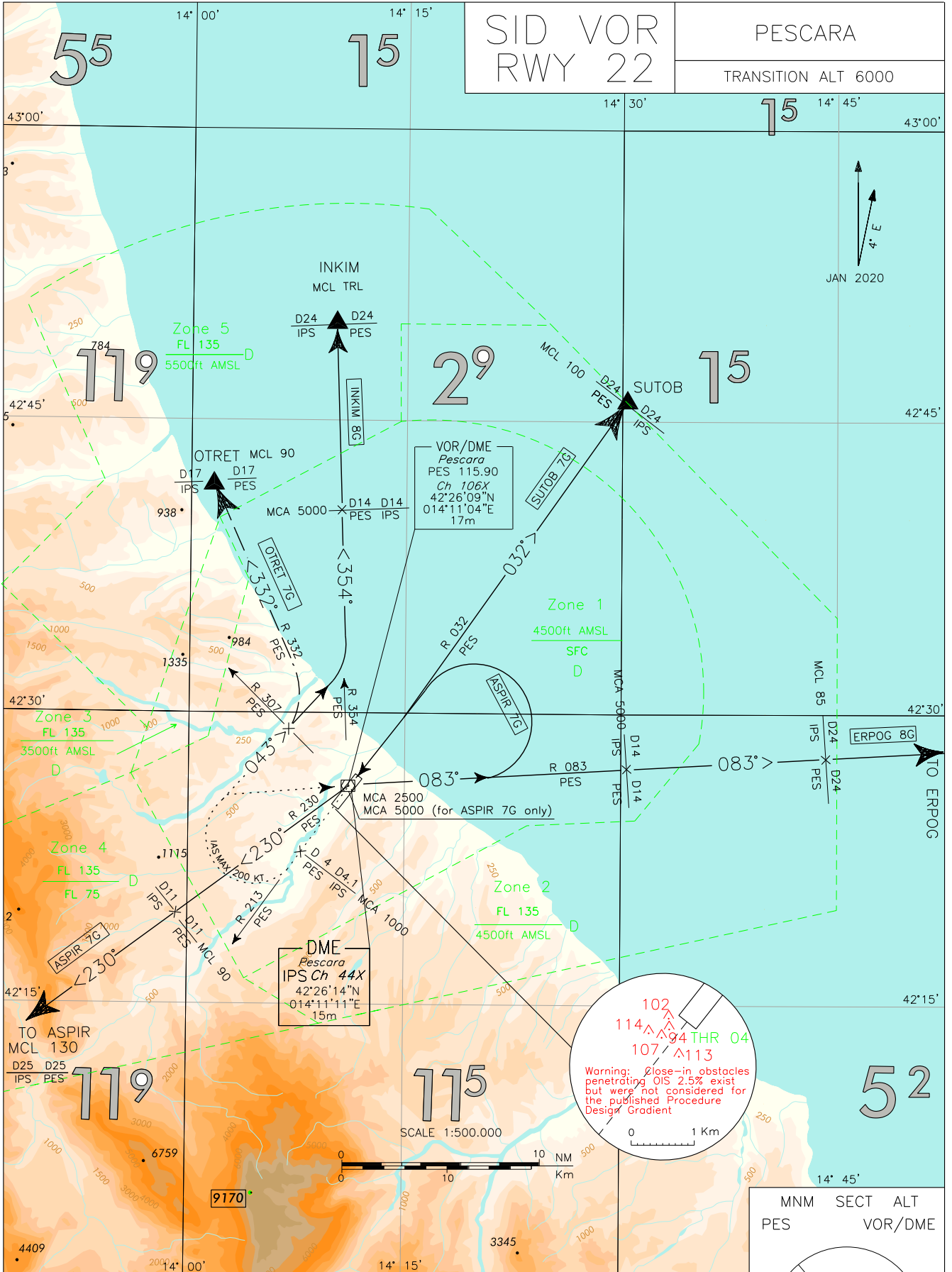
Intenzionalmente bianca

Intentionally left blank

SID VOR
RWY 22

PESCARA

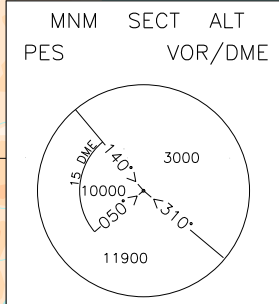
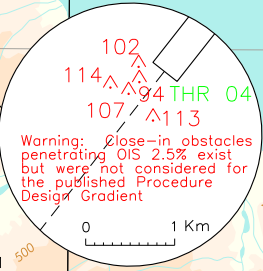
TRANSITION ALT 6000



CHANGE: MAG VAR UPDATED

JAN 2020

Warning: Close-in obstacles penetrating OIS 2.5% exist but were not considered for the published Procedure Design Gradient



FREQUENCIES	
TWR Pescara	TWR 118.450
APP Pescara	APP 120.050

LEGEND	
	Initial climb
	SID
	Sid ATC Discretion
	Not to Scale

INITIAL CLIMB PROCEDURE RWY 22

After take-off, proceed on RDL 213 PES VOR until passing 1000 ft (to be crossed not further than 4 NM PES DME or 4.1 NM IPS DME), then:

- if cleared for SID INKIM 8G or OTRET 7G: turn right on TR 043°;
- if cleared for other SID: turn right bound to PES VOR/DME (MCA 2500 ft) and follow the assigned SID.

REMARKS

- 1) **Minimum climb gradient: 300 ft/NM (5%).**
- 2) **IAS MAX 200 kt during turn.**

WARNING

Close-in obstacles penetrating OIS 2.5% exist, but they were not considered for the published procedure design required.

SID DESCRIPTION

Initial climb procedure completed:

ASPIR 7G

Leave PES VOR on RDL 083 (TR 083°), then turn left bound to PES VOR to leave on RDL 230 (TR 230°) bound to ASPIR.

MCA/MCL: PES VOR: 5000 FT; RDL 230/11 NM PES VOR/DME (or RDL 230 PES VOR/11 NM IPS DME): FL 90; ASPIR: FL 130

ERPOG 8G

Leave PES VOR on RDL 083 (TR 083°) bound to ERPOG.

MCA/MCL: RDL 083/14 NM PES VOR/DME (or RDL 083 PES VOR/14 NM IPS DME): 5000 FT; RDL 083/24 NM PES VOR/DME (or RDL 083 PES VOR/24 NM IPS DME): FL 85

INKIM 8G

Proceed on TR 043° until joining RDL 354 PES VOR (TR354°) bound to INKIM.

MCA/MCL: RDL 354/14 NM PES VOR/DME (or RDL 354 PES VOR/14 NM IPS DME): 5000 FT; INKIM: TRL

OTRET 7G (ATC discretion)

Proceed on TR 043°. Crossing RDL 307 PES VOR turn left until joining RDL 332 PES VOR (TR 332°) bound to OTRET.

MCL: OTRET: FL 90

SUTOB 7G

Leave PES VOR on RDL 032 (TR 032°) bound to SUTOB.

MCL: SUTOB: FL 100

Intenzionalmente bianca

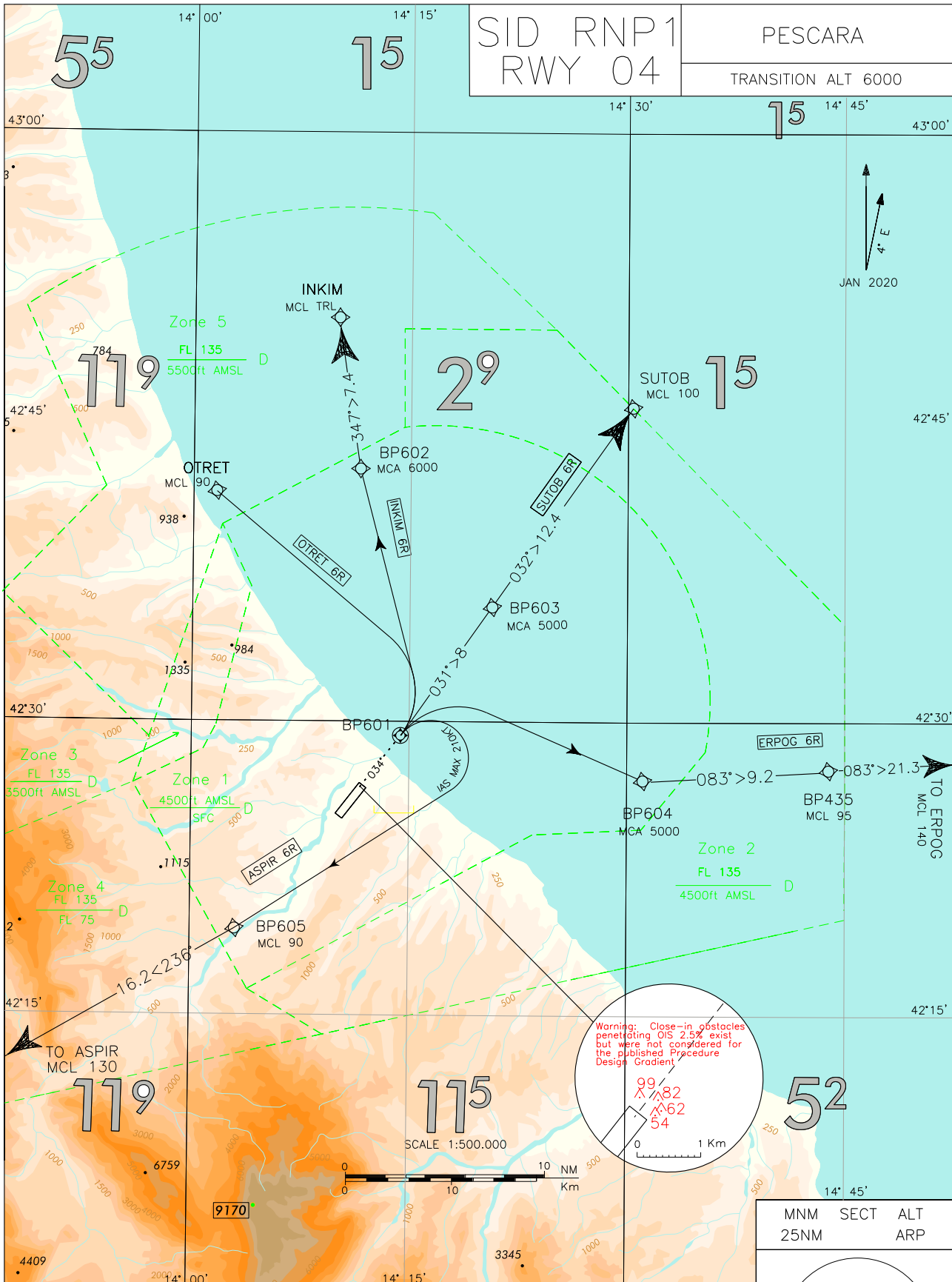
Intentionally left blank

SID RNP1
RWY 04

PESCARA

TRANSITION ALT 6000

CHANGE: MAG VAR UPDATED AND RENUMBERED CHART



Warning: Close-in obstacles penetrating OIS 2.5% exist but were not considered for the published Procedure Design Gradient

99	82
62	54

1 Km

FREQUENCIES	
TWR Pescara TWR	118.450
APP Pescara APP	120.050

LEGEND	
	SID
	Initial climb

MNM	SECT	ALT
25NM		ARP
11900		

SID RNP1 RWY 04**WARNING**

- 1) Close-in obstacles penetrating OIS 2.5% exist, but they were not considered for the published procedure design gradient.

ASPIR 6R

Minimum Climb Gradient: 6% (365 FT/NM)

Path Terminator	Waypoint Identifier	Fly Over	Course °M (°T)	Magnetic Variation	Distance (NM)	Turn Direction	Altitude (ft)	Speed Limit (kt)	Navigation Specification
CF	BP601	Y	034 (037.5)	3.7	-	-	-	-210	RNP
DF	BP605	-	-	-	-	R	+FL90	-	RNP
TF	ASPIR	-	236 (240.1)	-	16.2	-	+FL130	-	RNP

ERPOG 6R

Minimum Climb Gradient: 6% (365 FT/NM) until BP435

Path Terminator	Waypoint Identifier	Fly Over	Course °M (°T)	Magnetic Variation	Distance (NM)	Turn Direction	Altitude (ft)	Speed Limit (kt)	Navigation Specification
CF	BP601	Y	034 (037.5)	3.7	-	-	-	-	RNP
DF	BP604	-	-	-	-	R	+5000	-	RNP
TF	BP435	-	083 (086.5)	-	9.2	-	+FL95	-	RNP
TF	ERPOG	-	083 (086.9)	-	21.3	-	+FL140	-	RNP

INKIM 6R

Minimum Climb Gradient: 6% (365 FT/NM)

Path Terminator	Waypoint Identifier	Fly Over	Course °M (°T)	Magnetic Variation	Distance (NM)	Turn Direction	Altitude (ft)	Speed Limit (kt)	Navigation Specification
CF	BP601	Y	034 (037.5)	3.7	-	-	-	-	RNP
DF	BP602	-	-	-	-	L	+6000	-	RNP
TF	INKIM	-	347 (351.0)	-	7.4	-	+TRL	-	RNP

OTRET 6R

Minimum Climb Gradient: 7% (425 FT/NM)

Path Terminator	Waypoint Identifier	Fly Over	Course °M (°T)	Magnetic Variation	Distance (NM)	Turn Direction	Altitude (ft)	Speed Limit (kt)	Navigation Specification
CF	BP601	Y	034 (037.5)	3.7	-	-	-	-	RNP
DF	OTRET	-	-	-	-	L	+FL90	-	RNP

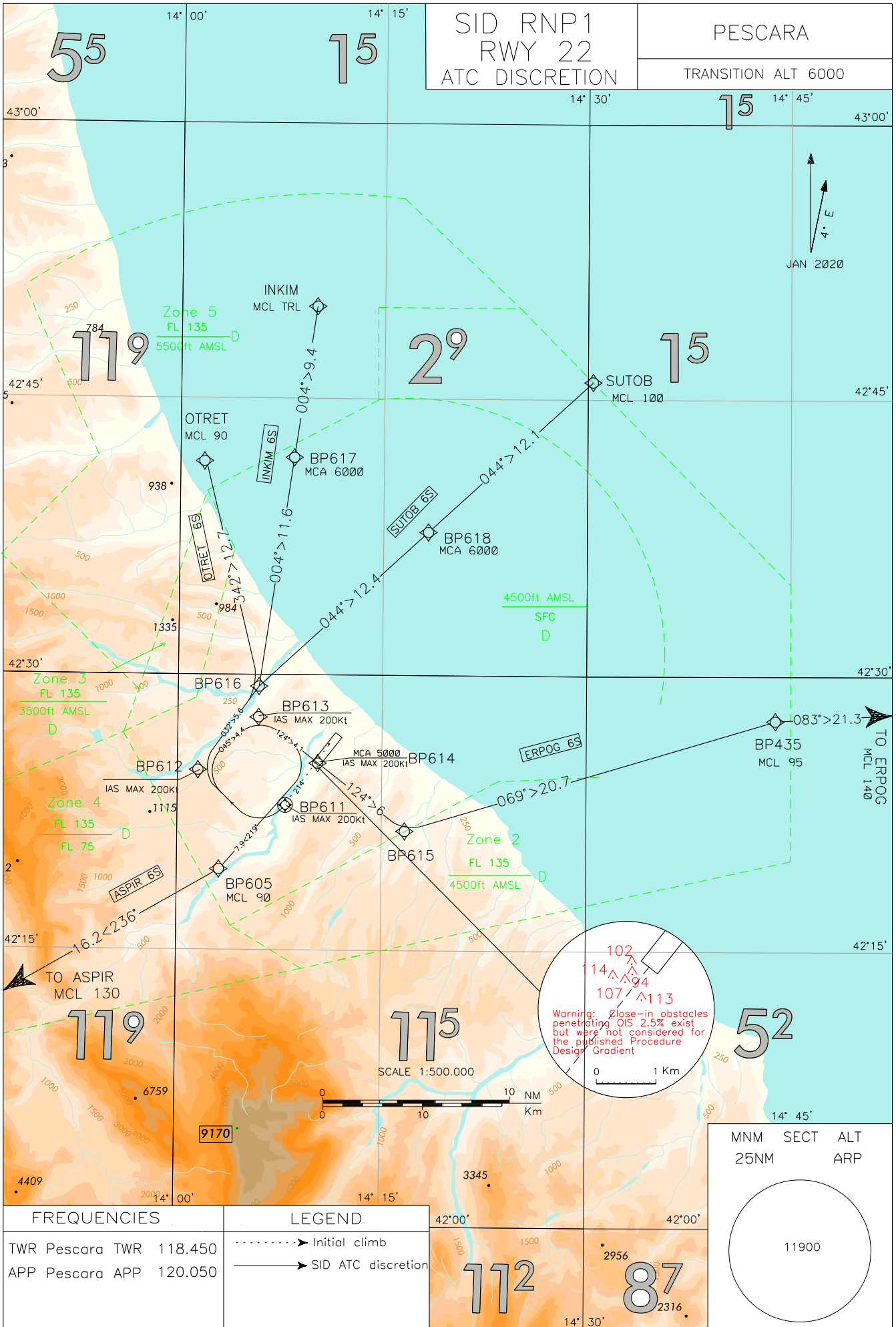
SUTOB 6R

Minimum Climb Gradient: 7% (425 FT/NM)

Path Terminator	Waypoint Identifier	Fly Over	Course °M (°T)	Magnetic Variation	Distance (NM)	Turn Direction	Altitude (ft)	Speed Limit (kt)	Navigation Specification
CF	BP601	Y	034 (037.5)	3.7	-	-	-	-	RNP
TF	BP603	-	031 (035.0)	-	8.0	-	+5000	-	RNP
TF	SUTOB	-	032 (035.3)	-	12.4	-	+FL100	-	RNP

WAYPOINT LIST

Waypoint Identifier	Coordinates
BP435	42° 27' 34.87"N 014° 43' 25.40" E
BP601	42° 29' 15.65"N 014° 14' 29.13" E
BP602	42° 42' 51.29"N 014° 11' 30.26" E
BP603	42° 35' 52.61"N 014° 20' 38.48" E
BP604	42° 27' 03.21"N 014° 31' 04.08" E
BP605	42° 19' 25.37"N 014° 03' 05.03" E



CHANGE: MAG VAR UPDATED AND RENUMBERED CHART

JAN 2020
4° E

102
114
94
107
113

Warning: Close-in obstacles penetrating OIS 2.5% exist but were not considered for the published Procedure Design Gradient

0 1 Km

SID RNP1 RWY 22 – ATC DISCRETION**WARNING**

- 1) Close-in obstacles penetrating OIS 2.5% exist, but they were not considered for the published procedure design gradient.

ASPIR 6S (ATC discretion)

Minimum Climb Gradient: 6.4% (390 FT/NM)

Path Terminator	Waypoint Identifier	Fly Over	Course °M (°T)	Magnetic Variation	Distance (NM)	Turn Direction	Altitude (ft)	Speed Limit (kt)	Navigation Specification
CF	BP611	Y	214 (217.5)	3.7	-	-	-	-200	RNP
DF	BP612	-	-	-	-	R	-	-200	RNP
TF	BP613	-	045 (048.6)	-	4.4	-	-	-200	RNP
TF	BP614	-	124 (127.6)	-	4.1	R	+5000	-200	RNP
TF	BP605	-	219 (222.4)	-	7.9	-	+FL90	-	RNP
TF	ASPIR	-	236 (240.1)	-	16.2	-	+FL 130	-	RNP

ERPOG 6S (ATC discretion)

Minimum Climb Gradient: 6.4% (390 FT/NM) until BP614

Path Terminator	Waypoint Identifier	Fly Over	Course °M (°T)	Magnetic Variation	Distance (NM)	Turn Direction	Altitude (ft)	Speed Limit (kt)	Navigation Specification
CF	BP611	Y	214 (217.5)	3.7	-	-	-	-200	RNP
DF	BP612	-	-	-	-	R	-	-200	RNP
TF	BP613	-	045 (048.6)	-	4.4	-	-	-200	RNP
TF	BP614	-	124 (127.6)	-	4.1	-	+5000	-	RNP
TF	BP615	-	124 (127.6)	-	6.0	-	-	-	RNP
TF	BP435	-	069 (072.9)	-	20.7	-	+FL 95	-	RNP
TF	ERPOG	-	083 (086.8)	-	21.3	-	+FL140	-	RNP

INKIM 6S (ATC discretion)

Minimum Climb Gradient: 6.4% (390 FT/NM) until BP616

Path Terminator	Waypoint Identifier	Fly Over	Course °M (°T)	Magnetic Variation	Distance (NM)	Turn Direction	Altitude (ft)	Speed Limit (kt)	Navigation Specification
CF	BP611	Y	214 (217.5)	3.7	-	-	-	-200	RNP
DF	BP612	-	-	-	-	R	-	-200	RNP
TF	BP616	-	032 (035.8)	-	5.6	-	-	-	RNP
TF	BP617	-	004 (008.0)	-	11.6	-	+6000	-	RNP
TF	INKIM	-	004 (008.1)	-	9.4	-	+TRL	-	RNP

OTRET 6S (ATC discretion)

Minimum Climb Gradient: 6.4% (390 FT/NM)

Path Terminator	Waypoint Identifier	Fly Over	Course °M (°T)	Magnetic Variation	Distance (NM)	Turn Direction	Altitude (ft)	Speed Limit (kt)	Navigation Specification
CF	BP611	Y	214 (217.5)	3.7	-	-	-	-200	RNP
DF	BP612	-	-	-	-	R	-	-200	RNP
TF	BP616	-	032 (035.8)	-	5.6	-	-	-	RNP
TF	OTRET	-	342 (345.4)	-	12.7		+FL90	-	RNP

SUTOB 6S (ATC discretion)

Minimum Climb Gradient: 6.4% (390 FT/NM) until BP616

Path Terminator	Waypoint Identifier	Fly Over	Course °M (°T)	Magnetic Variation	Distance (NM)	Turn Direction	Altitude (ft)	Speed Limit (kt)	Navigation Specification
CF	BP611	Y	214 (217.5)	3.7	-	-	-	-200	RNP
DF	BP612	-	-	-	-	R	-	-200	RNP
TF	BP616	-	032 (035.8)	-	5.6	-		-	RNP
TF	BP618	-	044 (047.2)	-	12.4	-	+6000	-	RNP
TF	SUTOB	-	044 (047.3)	-	12.1		+FL100	-	RNP

WAYPOINT LIST

Waypoint Identifier	Coordinates
BP435	42°27' 34.87" N 014° 43' 25.40" E
BP605	42° 19' 25.37"N 014° 03' 05.03" E
BP611	42° 22' 55.25"N 014° 07' 55.31" E
BP612	42° 24' 48.78"N 014° 01' 30.13" E
BP613	42° 27' 41.91"N 014° 05' 55.26" E
BP614	42° 25' 12.49"N 014° 10' 17.12" E
BP615	42 °21' 32.40" N 014° 16' 41.64" E
BP616	42° 29' 22.07" N 014° 05' 56.32" E
BP617	42° 40' 50.20"N 014° 08' 07.93" E
BP618	42° 37' 48.05" N 014° 18' 17.54" E