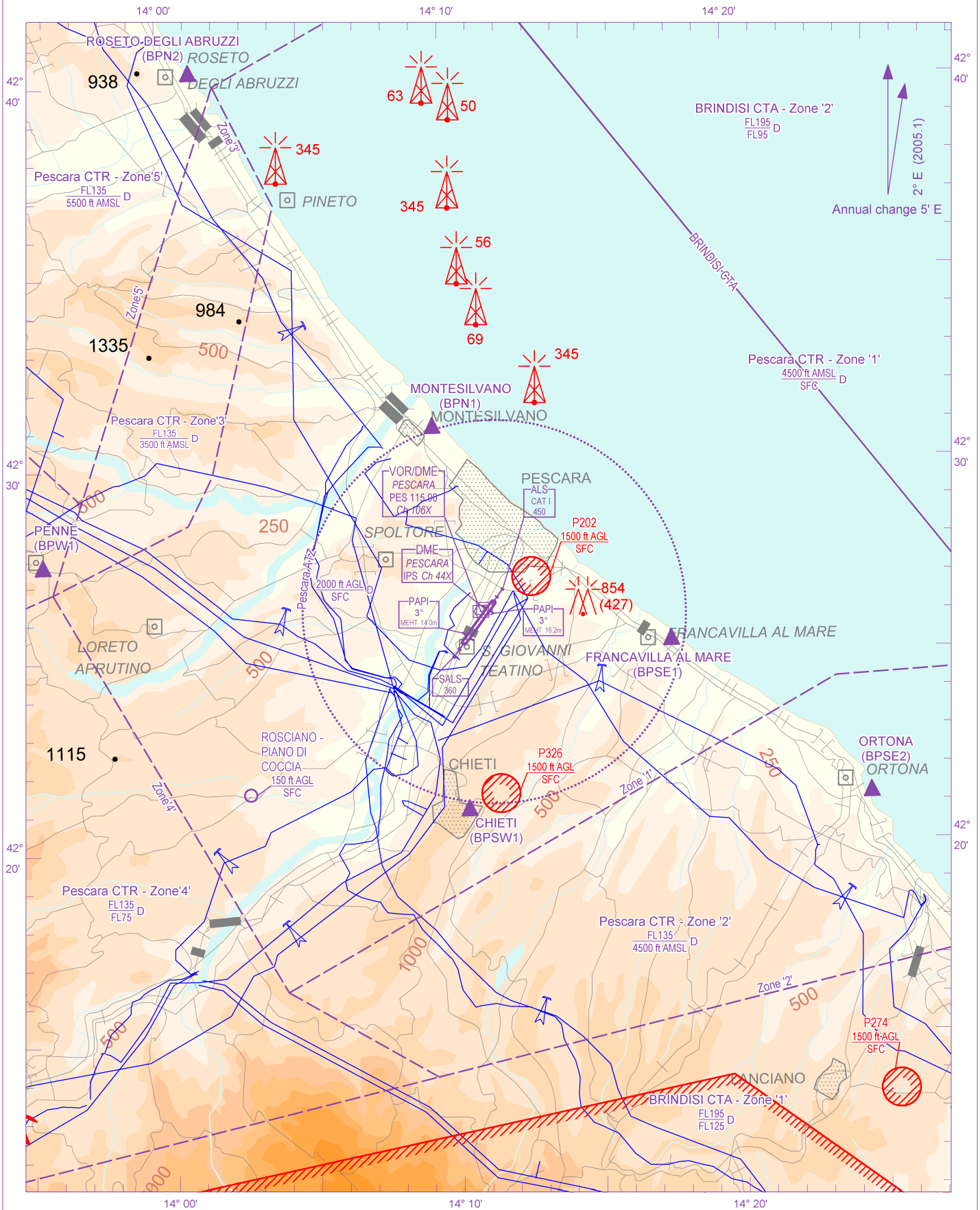


SCALE 1:250.000 	FIS Brindisi Information APP Pescara APP TWR Pescara TWR	125.100 120.050 118.450	AD ELEV 48	L I B P	PESCARA
--	--	-------------------------------	---------------	------------------	---------



CHANGE: PES NDB completely withdrawn

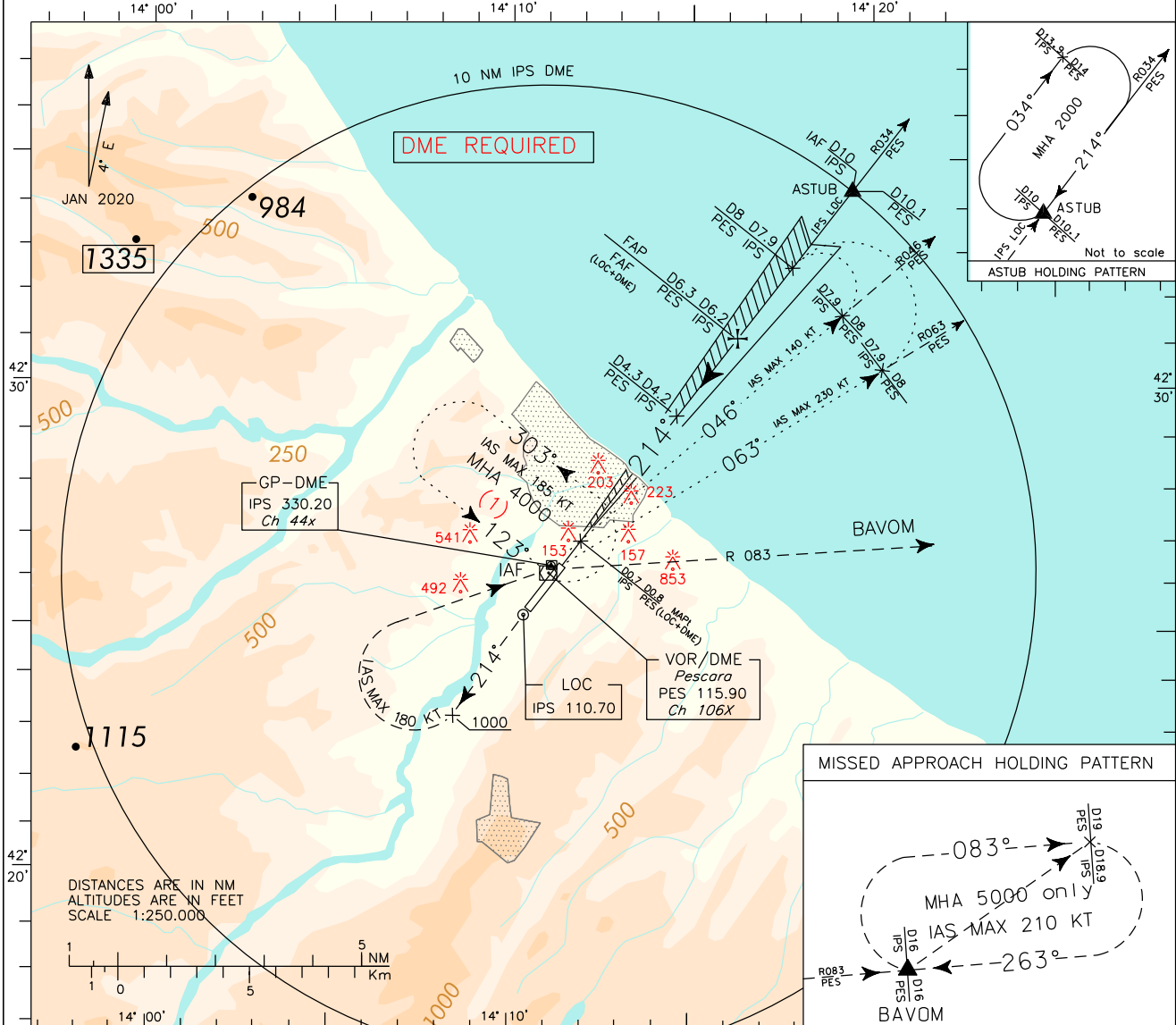
AIRSPACE CLASSIFICATION See AIP ENR 1.4 TRANSITION ALT 6000 FT ELEV AND ALT IN FT IF NOT OTHERWISE INDICATED	REMARK	WARNING
---	--------	---------

ICAO - INSTRUMENT APPROACH CHART

AD 2 LIBP 5-3

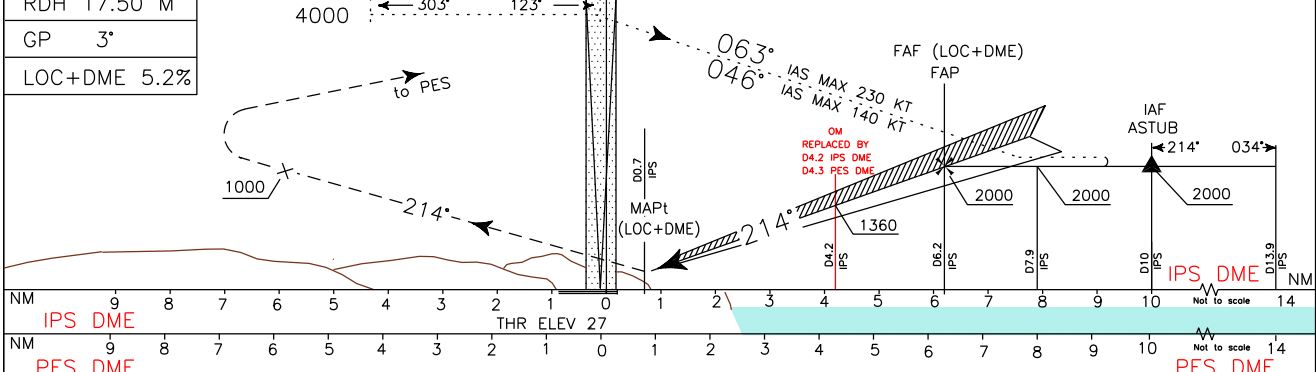
DOC. 8168 - ED.6 2014 - AMDT. 8

(1) Inbound holding track not aligned with outbound base turn procedure.	APP	Pescara APP	120.050	AD ELEV	L I B P	PESCARA
	TWR	Pescara TWR	118.450	48		



TRANSITION ALT 6000
RDH 17.50 M
GP 3°
LOC+DME 5.2%

MISSED APPROACH: Proceed on TR 214° and climb to 5000 ft. Passing 1000 ft, not before 3.1 NM after IPS DME (or 3.0 NM after PES DME) turn right (IAS MAX 180kt) to PES VOR to leave on RDL 083 bound to BAVOM. First M.A. right turn restricted to 180 KT IAS MAX.



STRAIGHT IN APPROACH	OCA (OCH)			
	A	B	C	D
ILS	245 (218)	253 (226)	261 (234)	272 (245)
LOC+DME	500 (473)			
CIRCLING	1100 (1052)	1200 (1152)	1300 (1252)	

CIRCLING SECTOR	IPSDIST	ALT(HGT)	FT PER MIN	GS	FAF-D0.7 5.5 NM	MNM SECT ALT	
						PES	VOR DME
	5DME	1620(1593)	425	80	4 : 08		
	4DME	1300(1237)	530	100	3 : 18		
	3DME	980(953)	635	120	2 : 45		
	2DME	660(633)	745	140	2 : 21		
	1DME	340(313)	850	160	2 : 04		

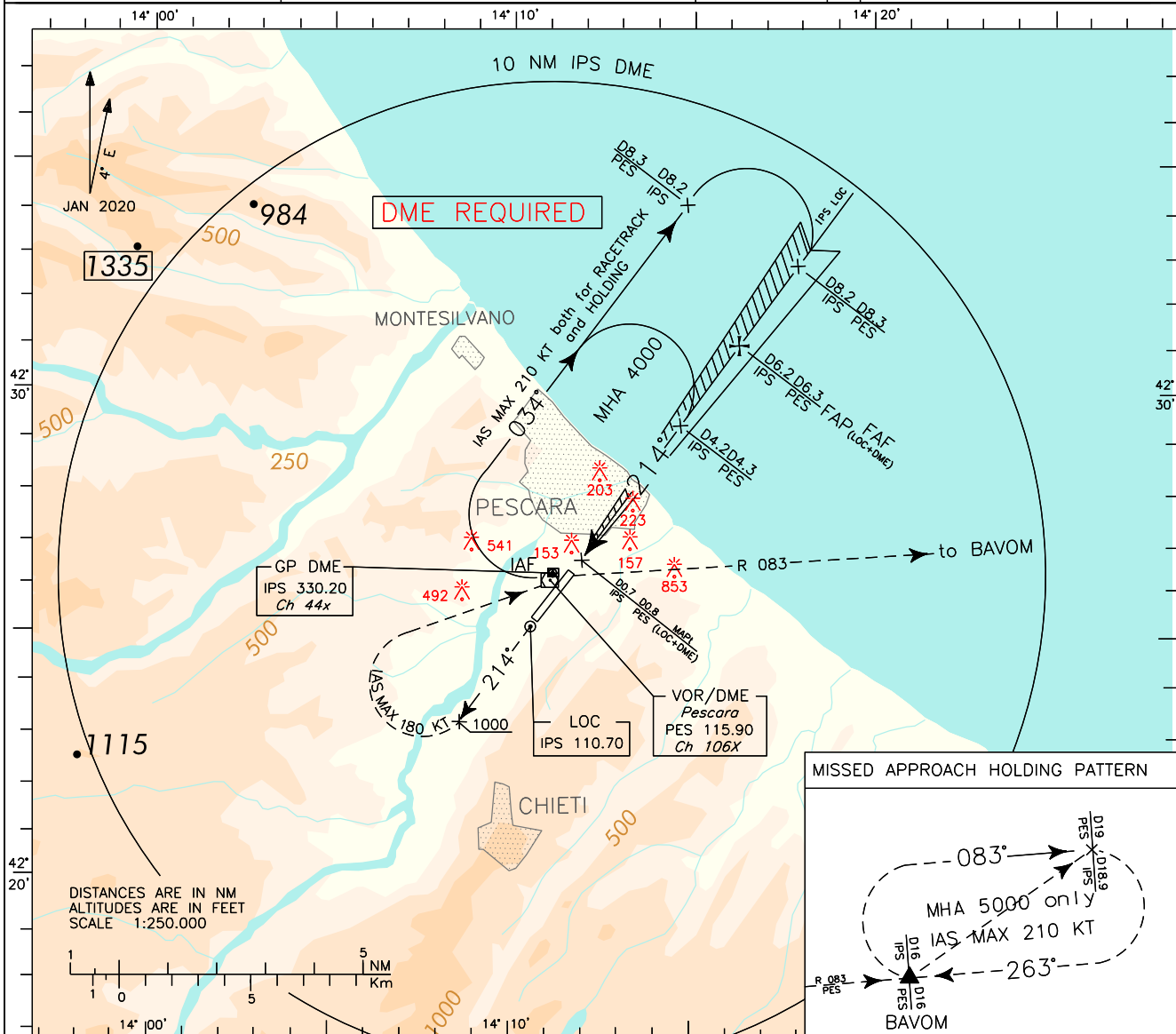
FIX/POINT	Coordinates (WGS84)
IAF (ASTUB)	42°34'04.3"N 014°19'32.3"E
IAF (PES VOR)	42°26'09.1"N 014°11'03.5"E
IF	42°32'25.8"N 014°17'46.7"E
FAP FAF (LOC+DME)	42°31'05.2"N 014°16'22.9"E
MAPt (LOC+DME)	42°26'43.2"N 014°11'51.1"E

ICAO - INSTRUMENT APPROACH CHART

AD 2 LIBP 5-5

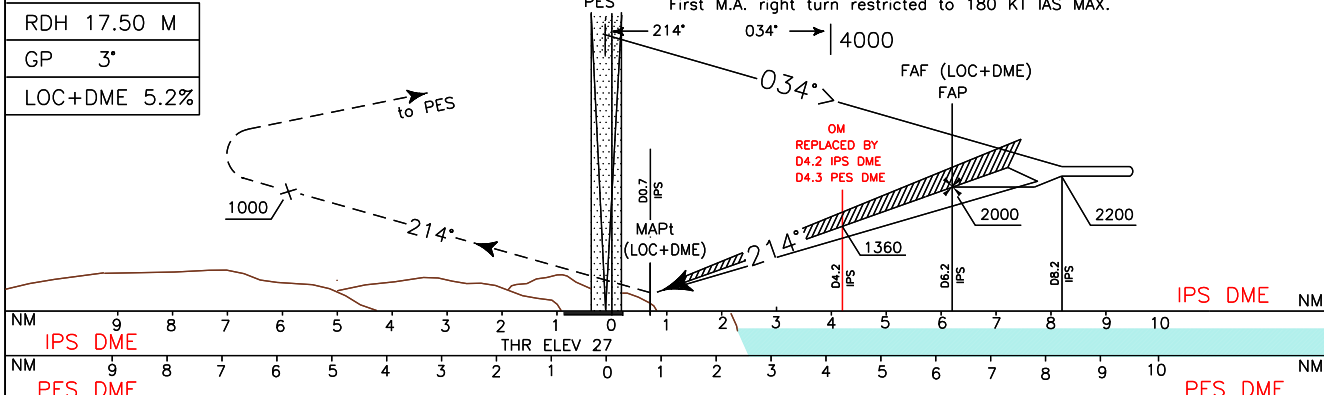
DOC. 8168 - ED.6 2014 - AMDT. 8

APP <i>Pescara APP</i>	120.050	AD ELEV	48	LIBP	PESCARA
TWR <i>Pescara TWR</i>	118.450				ILS or LOC Y RWY22



TRANSITION ALT 6000

MISSED APPROACH: Proceed on TR 214° and climb to 5000 ft. Passing 1000 ft, not before 3.1 NM after IPS DME (or 3.0 NM after PES DME) turn right (IAS MAX 180kt) to PES VOR to leave on RDL 083 bound to BAVOM. First M.A. right turn restricted to 180 KT IAS MAX.



STRAIGHT IN APPROACH	OCA (OCH)				CIRCLING SECTOR	IPS DIST					MNM SECT ALT	
	ILS	A	B	C		D	ALT(HGT)	FT PER MIN	GS	FAF-D0.7	PES	VOR/DME
ILS	245 (218)	253 (226)	261 (234)	272 (245)		5DME	1620(1593)	425	80	4 : 08		
LOC+DME	500 (473)					4DME	1300(1237)	530	100	3 : 18		
						3DME	980(953)	635	120	2 : 45		
						2DME	660(633)	745	140	2 : 21		
CIRCLING		1100 (1052)	1200 (1152)	1300 (1252)	1DME	340(313)	850	160	2 : 04			

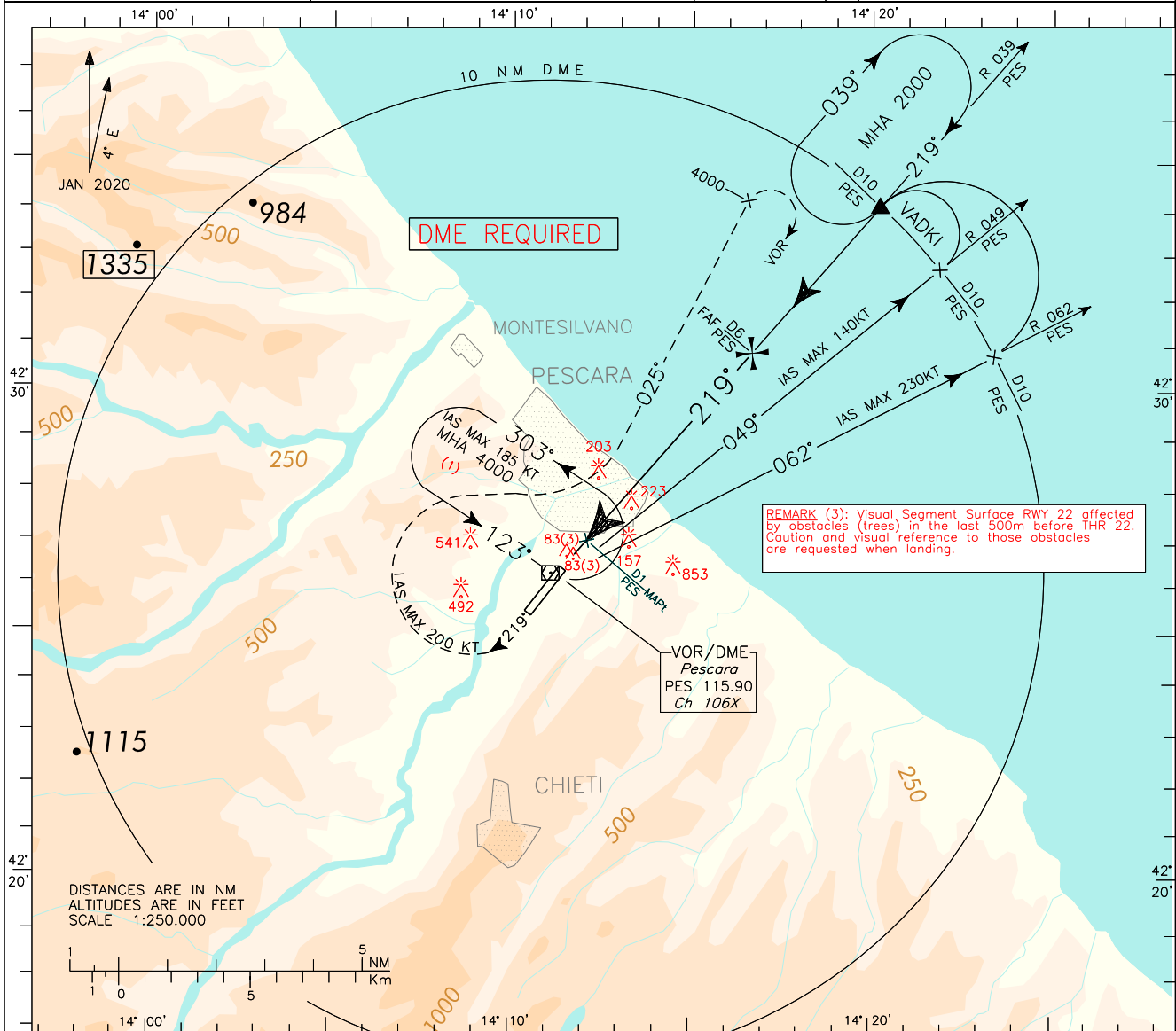
FIX/POINT	Coordinates (WGS84)
IAF	42°26'09.1"N 014°11'03.5"E
IF	42°32'40.3"N 014°18'02.1"E
FAP FAF (LOC+DME)	42°31'05.2"N 014°16'22.9"E
MAPt (LOC+DME)	42°26'43.2"N 014°11'51.1"E

ICAO – INSTRUMENT APPROACH CHART

AD 2 LIBP 5-7

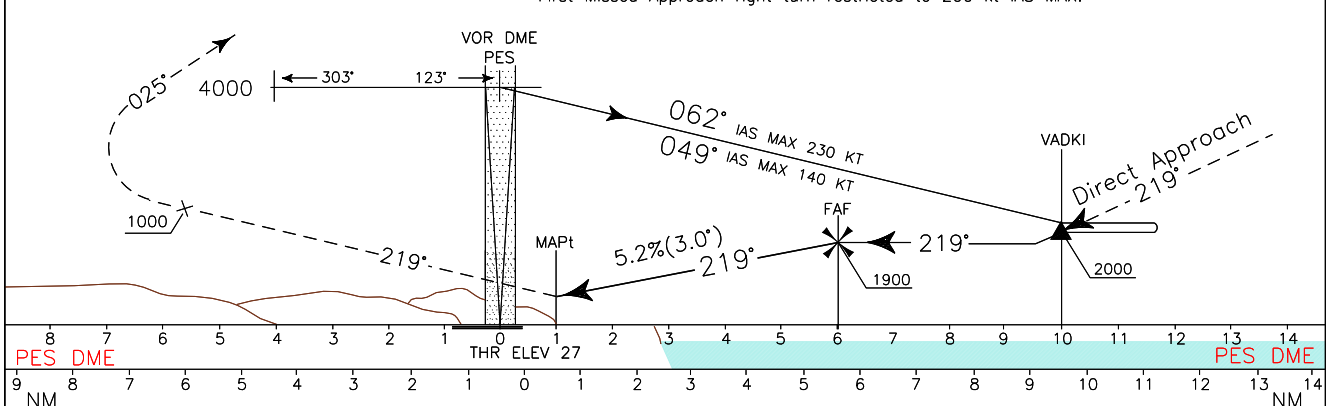
AMDT 4
 DOC. 8168 – ED.5 2006
 CHANGE: UPDATED CHART

REMARK (1): Inbound holding track not aligned with outbound base turn procedure REMARK (2): Final approach track offset 4.6° from RWY extended CL. Final approach track intersects RWY extended CL 2100m before THR	APP	Pescara APP	120.050	AD ELEV	48	L B P	PESCARA
	TWR	Pescara TWR	118.450				



TRANSITION ALT 6000

MISSED APPROACH: Proceed on TR 219° and climb to 4000 ft. Crossing 1000 ft turn right to join RDL 025 PES VOR. Reaching 4000 ft turn right to PES VOR. First Missed Approach right turn restricted to 200 kt IAS MAX.



PES DME		NM												PES DME	
OCA (OCH)		A	B	C	D	CIRCLING SECTOR 	PES DIST	ALT(HGT)	FT PER MIN	GS	FAF-MAP 5 NM	MNM SECT ALT PES	VOR DME		
STRAIGHT IN APPROACH	VOR+DME	700 (673)					6DME	1900(1823)	390	80	3 : 45				
							5DME	1580(1503)	485	100	3 : 00				
								4DME	1260(1183)	585	120		2 : 30		
CIRCLING		1100 (1052)	1200 (1152)	1300 (1252)		3DME	940 (863)	680	140	2 : 09					
								780	160	1 : 52					

ICAO – INSTRUMENT APPROACH CHART

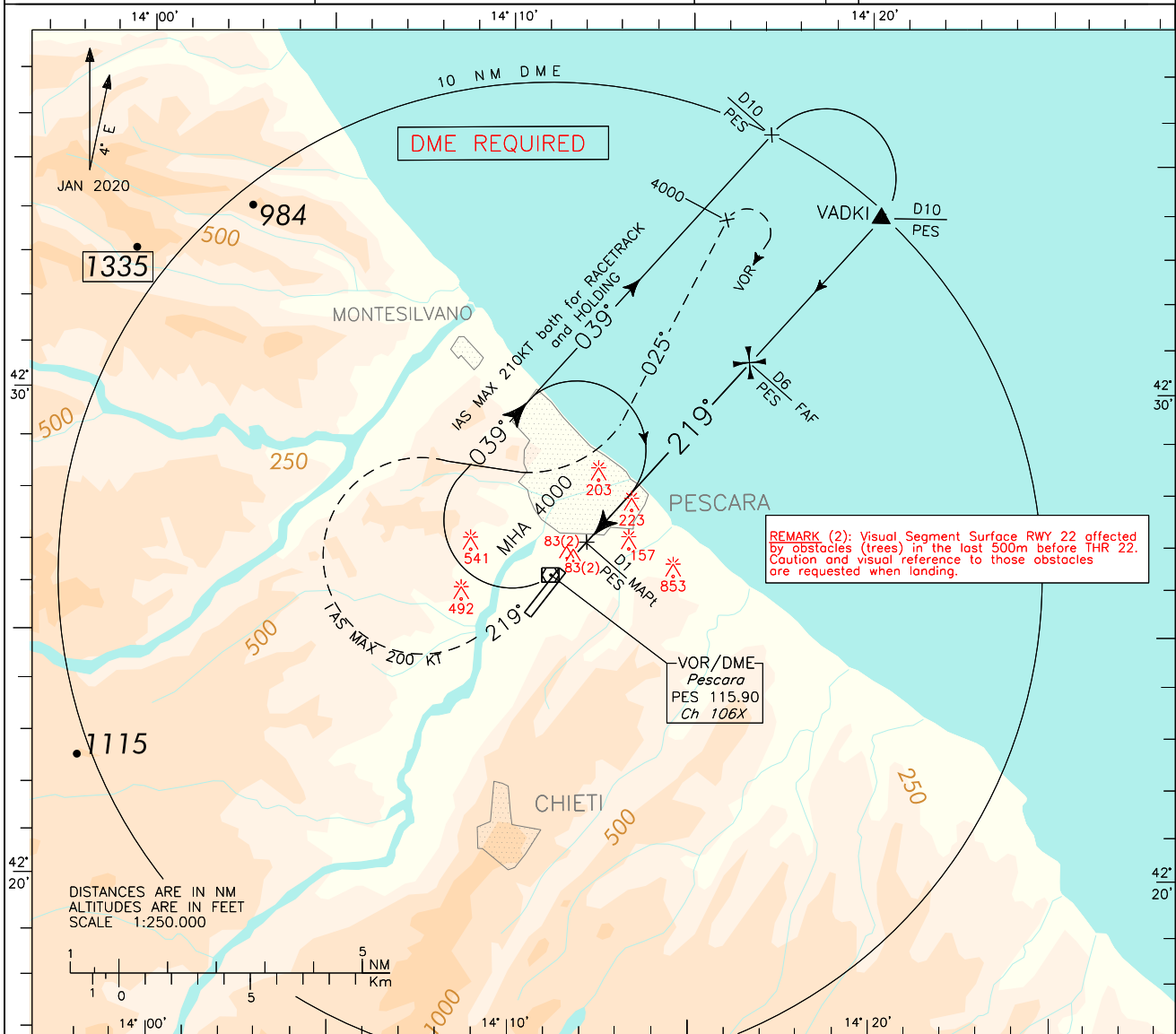
AD 2 LIBP 5-9

DOC. 8168 – ED.5 2006 – AMDT 4
CHANGE: MAG VAR UPDATED

REMARK (1): Final approach track offset 4.6° from RWY extended CL.
Final approach track intersects RWY ECL 2100 m before THR

APP	Pescara APP	120.050	AD ELEV	48
TWR	Pescara TWR	118.450		

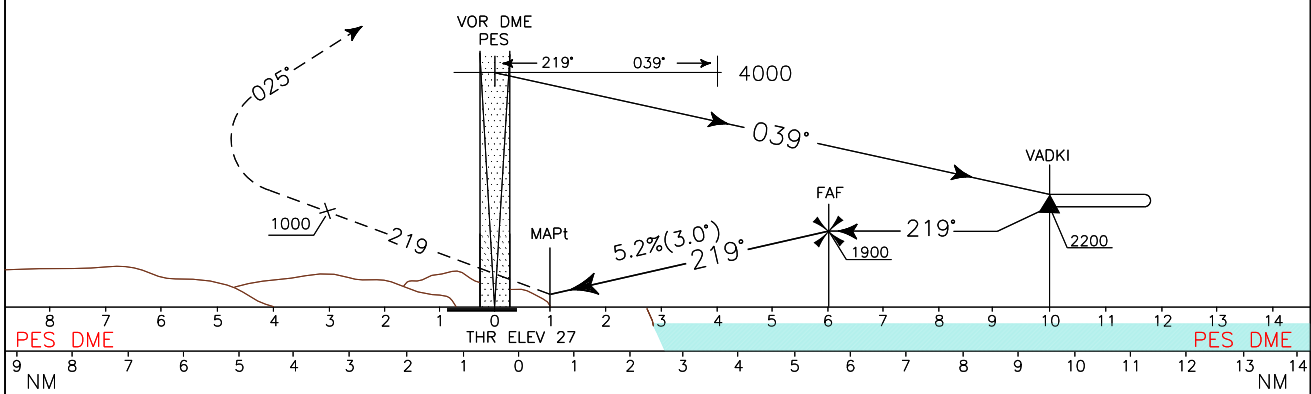
LIBP		PESCARA	
VOR-Y	RWY 22		



REMARK (2): Visual Segment Surface RWY 22 affected by obstacles (trees) in the last 500m before THR 22. Caution and visual reference to those obstacles are requested when landing.

TRANSITION ALT 6000

MISSED APPROACH: Proceed on TR 219° and climb to 4000 ft. Crossing 1000 ft turn right to join RDL 025° PES VOR. Reaching 4000 ft turn right to PES VOR. First Missed Approach right turn restricted to 200 kt IAS MAX.



OCA (OCH)		A	B	C	D	CIRCLING SECTOR	PES DIST	ALT(HGT)	FT PER MIN	GS	FAF-MAP 5 NM	MNM SECT ALT PES VOR DME
STRAIGHT IN APPROACH	VOR+DME	700 (673)										
							6DME	1900(1823)	390	80	3 : 45	
							5DME	1580(1503)	485	100	3 : 00	
							4DME	1260(1183)	585	120	2 : 30	
							3DME	940 (863)	680	140	2 : 09	
	CIRCLING	1100 (1052)		1200(1152)	1300(1252)			780	160	1 : 52		

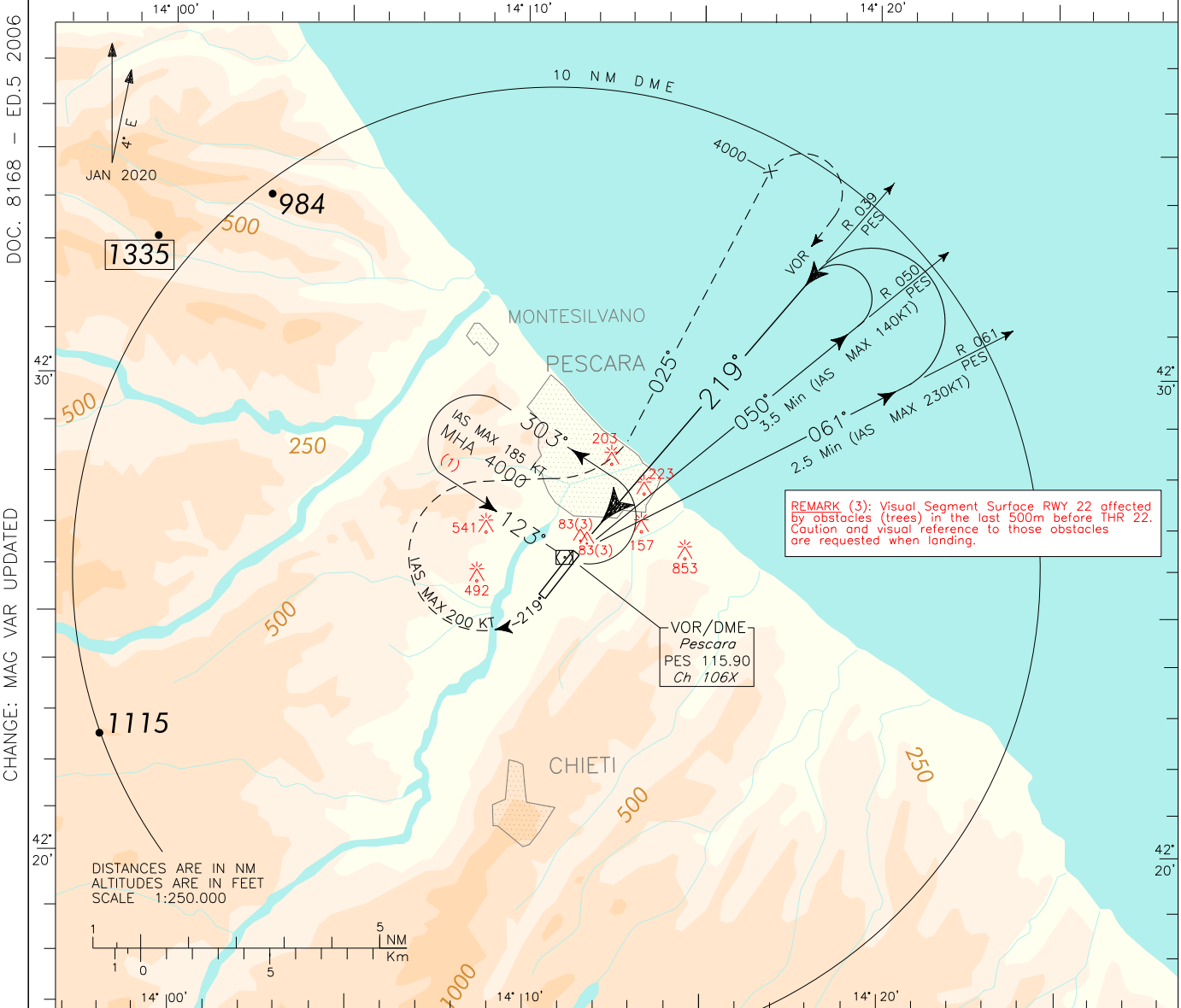
ICAO – INSTRUMENT APPROACH CHART

AD 2 LIBP 5-11

AMDT 4

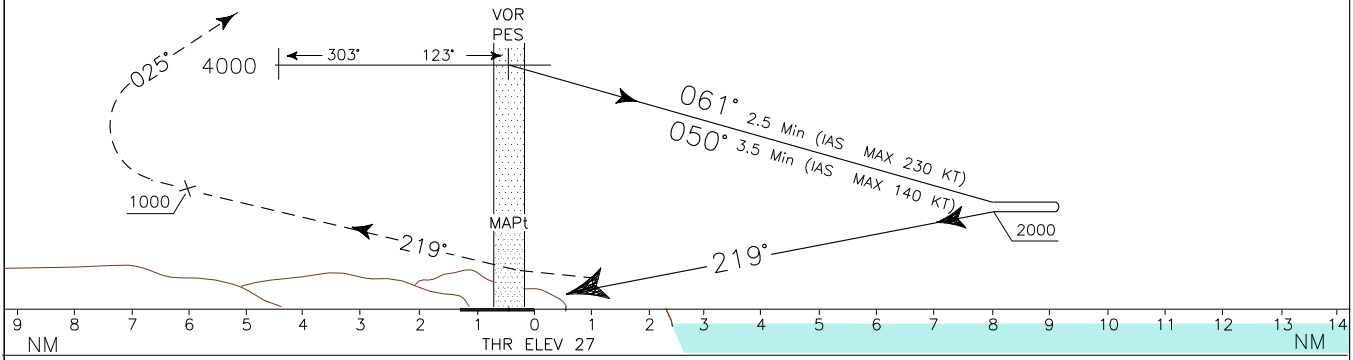
REMARK (1): Inbound holding track not aligned with outbound base turn procedure.
 REMARK (2): Final approach track offset 4.6' from RWY extended CL. Final approach track intersects RWY extended CL 2100 m before THR.

APP	Pescara APP	120.050	AD ELEV	48	L I B P	PESCARA	
TWR	Pescara TWR	118.450				VOR-X	RWY 22



TRANSITION ALT 6000

MISSED APPROACH: Proceed on TR 219° and climb to 4000 ft. Crossing 1000 ft turn right to join RDL 025 PES VOR. Reaching 4000 ft turn right to PES VOR. First Missed Approach right turn restricted to 200 kt IAS MAX.



OCA (OCH)		A	B	C	D	CIRCLING SECTOR 	MNM SECT ALT PES VOR
STRAIGHT IN APPROACH	VOR	750 (723)					
	CIRCLING	1100 (1052)	1200 (1152)	1300 (1252)			

ICAO – INSTRUMENT APPROACH CHART

AD 2 LIBP 5-13

DOC. 8168 – ED.5 2006 – AMDT 4
CHANGE: MAC VAR UPDATED

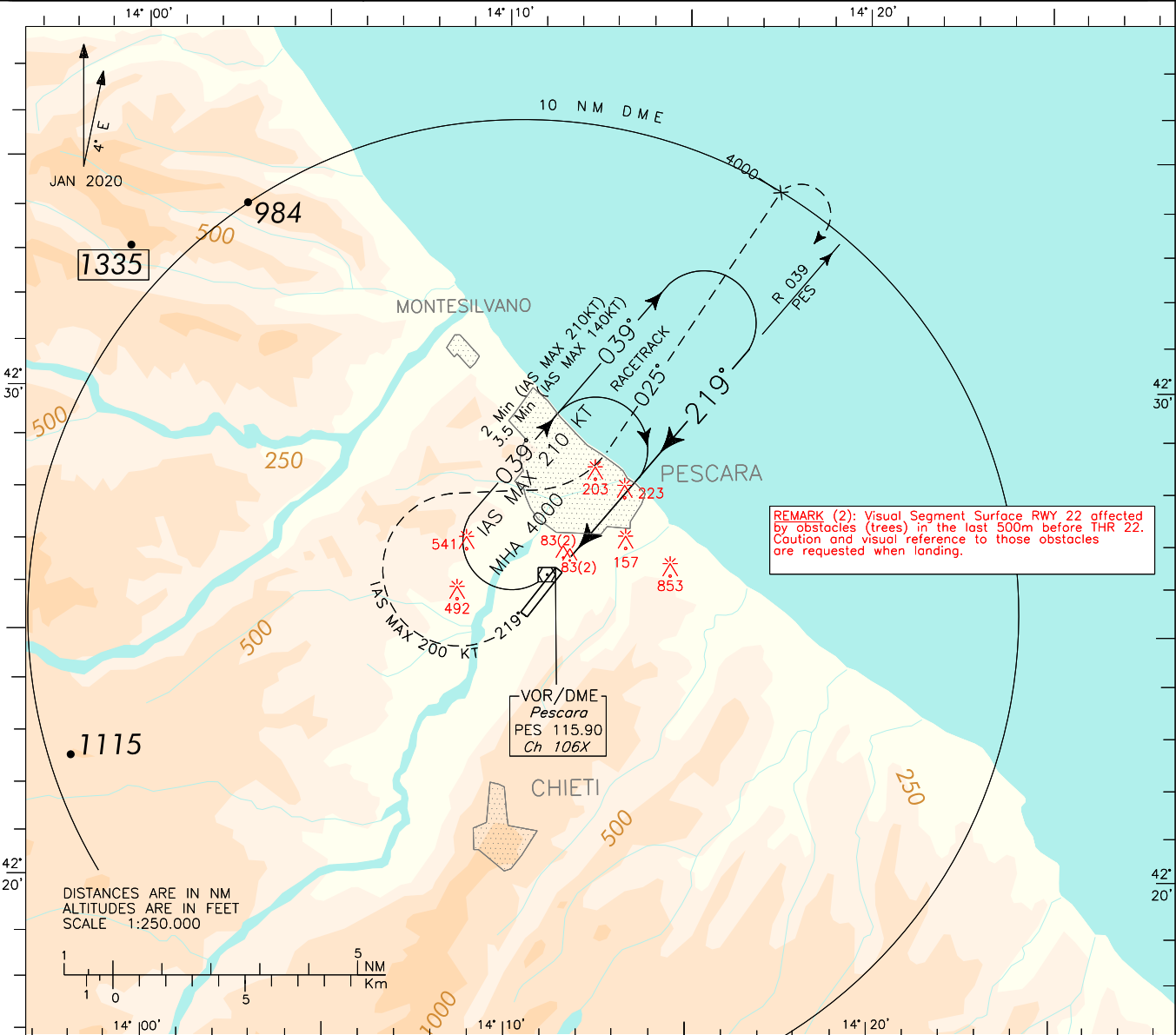
REMARK (1): Final approach track offset 4.6' from RWY extended CL. Final approach track intersects RWY extended CL 2100m before THR.

APP	Pescara APP	120.050
TWR	Pescara TWR	118.450

AD ELEV
48

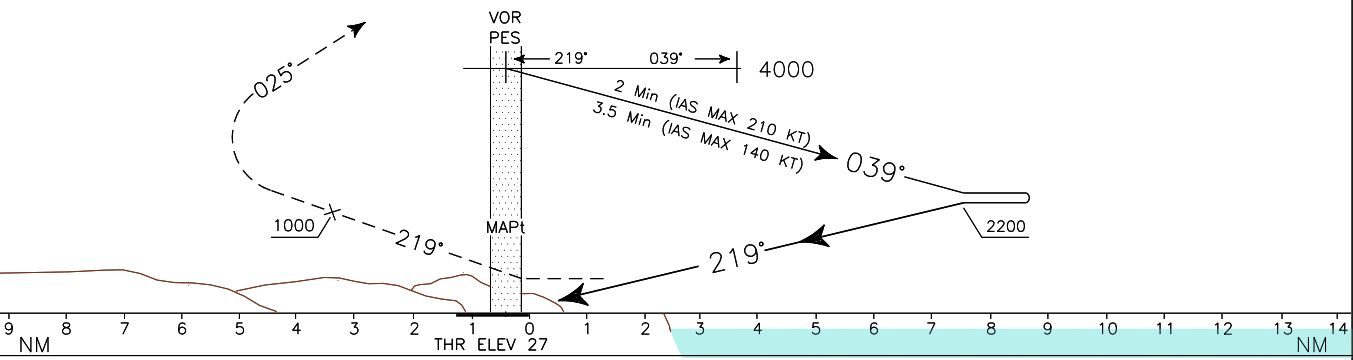
LIBP

PESCARA
VOR-W RWY 22



TRANSITION ALT 6000

MISSED APPROACH: Proceed on TR 219° and climb to 4000 ft. Crossing 1000 ft turn right to join RDL 025° PES VOR. Reaching 4000 ft turn right to PES VOR. First Missed Approach right turn restricted to 200 kt IAS MAX.



OCA (OCH)		A	B	C	D
STRAIGHT IN APPROACH	VOR	750 (723)			
CIRCLING		1100 (1052)	1200 (1152)	1300 (1252)	

CIRCLING SECTOR

NOT ALLOWED

