

FREQUENCIES		
APP	Pescara APP	120.050
TWR	Pescara TWR	118.450

LEGEND	
STAR	→
STAR ATC DISCRETION	- - - - - →
Not to Scale	⚡ →

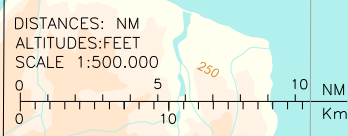
AIRSPACE CLASSIFICATION
See AIP - ENR 1.4

15	STAR ASTUB	PESCARA TRANSITION ALT 6000
----	---------------	--------------------------------

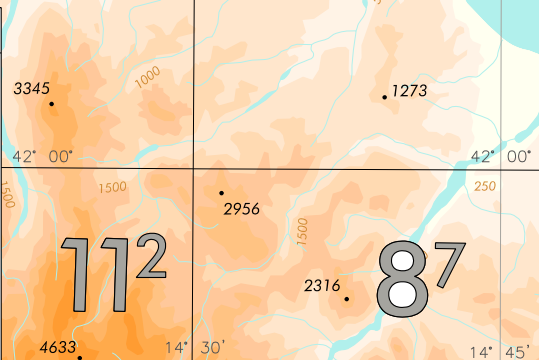


CHANGE: MAG VAR UPDATED

(1) STAR IDLOL 3L between IDLOL and BP401 flyable according to RNAV 5 specification



MNM	SECT	ALT	ASTUB Holding Procedure	BAVOM Holding Procedure (ATC Discretion)
PES	VOR/DME			



STAR Description
for ASTUB

BAVOM 3L (ATC discretion) (1)

BAVOM – turn right until joining ARC 15 NM PES DME. Crossing RDL 042 PES VOR turn left until joining RDL 034 PES VOR (TR 214°) bound to ASTUB.

MEA: BAVOM – ASTUB: 2000 FT

ERPOG 3L

ERPOG – TR 263° (RDL 083 PES VOR) until 17 NM PES DME, then turn right until joining ARC 15 NM PES DME. Crossing RDL 042 PES VOR turn left until joining RDL 034 PES VOR (TR 214°) bound to ASTUB.

MEL/MEA: ERPOG – RDL 083/24 NM PES VOR/DME: FL 85; RDL 083/24 NM PES VOR/DME – RDL083/17 NM PES VOR/DME: 5000 FT; RDL 083/17 NM PES VOR/DME – ASTUB: 2000 FT

ETRIN 3L

ETRIN – TR 243° (RDL 063 PES VOR) until 17 NM PES DME then turn right until joining ARC 15 NM PES DME. Crossing RDL 042 PES VOR turn left until joining RDL 034 PES VOR (TR 214°) bound to ASTUB.

MEA: ETRIN – RDL 063/17 NM PES VOR/DME: 5000 FT; RDL 063/17 NM PES VOR/DME – ASTUB: 2000 FT

IDLOL 3L (2)

IDLOL - TR 025° - BP401, then turn right until joining ARC 15 NM PES DME. Crossing RDL 026 PES VOR turn right until joining RDL 034 PES VOR (TR 214°) bound to ASTUB.

MEL/MEA: IDLOL – BP401: FL100; BP401 – INT ARC 15 NM PES DME/RDL 354 PES VOR: 6000 FT; INT ARC 15 NM PES DME/RDL 354 PES VOR – ASTUB: 2000 FT

(2) **REMARK:** STAR IDLOL 3L between IDLOL and BP401 flyable according RNAV 5 specification.

INKIM 3L

INKIM – TR 174° (RDL 354 PES VOR) until 17 NM PES DME, then turn left until joining ARC 15 NM PES DME. Crossing RDL 026 PES VOR turn right until joining RDL 034 PES VOR (TR 214°) bound to ASTUB.

MEL/MEA: INKIM – RDL 354/17 NM PES VOR/DME: TRL; RDL 354/17 NM PES VOR/DME - ASTUB: 2000 FT

OTRET 3L (ATC discretion)

OTRET – turn left until joining ARC 15 NM PES DME. Crossing RDL 026 PES VOR turn right until joining RDL 034 PES VOR (TR 214°) bound to ASTUB.

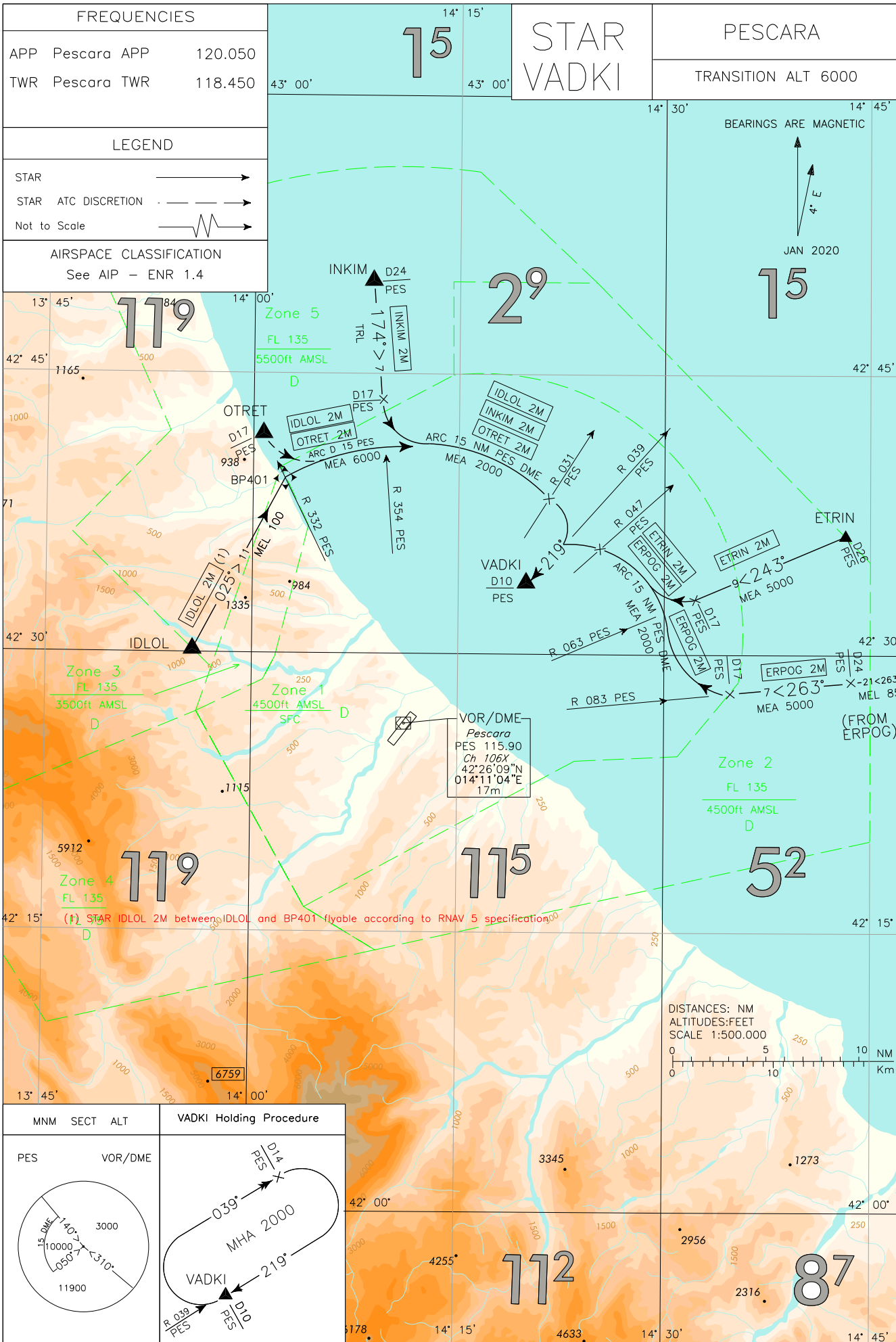
MEA: OTRET – INT ARC 15 NM PES DME/RDL 354 PES VOR: 6000 FT; INT ARC 15 NM PES DME/RDL 354 PES VOR – ASTUB: 2000 FT

WAYPOINT LIST

Waypoint Identifier	Coordinates
BP401	42°39'50.71" N 014°02'43.04" E

Intenzionalmente bianca

Intentionally left blank



STAR Description
for VADKI

ERPOG 2M

ERPOG – TR 263° (RDL 083 PES VOR) until 17 NM PES DME, then turn right until joining ARC 15 NM PES DME. Crossing RDL 047 PES VOR turn left until joining RDL 039 PES VOR (TR 219°) bound to VADKI.

MEL/MEA: ERPOG – RDL 083/24 NM PES VOR/DME: FL 85; RDL 083/24 NM PES VOR/DME – RDL 083/17 NM PES VOR/DME: 5000 FT; RDL 083/17 NM PES VOR/DME – VADKI: 2000 FT

ETRIN 2M

ETRIN – TR 243° (RDL 063 PES VOR) – until 17 NM PES DME then turn right until joining ARC 15 NM PES DME. Crossing RDL 047 PES VOR turn left until joining RDL 039 PES VOR (TR 219°) bound to VADKI.

MEA: – RDL 063/17 NM PES VOR/DME: 5000 FT; RDL 063/17 NM PES VOR/DME – VADKI: 2000 FT

IDLOL 2M (1)

IDLOL - TR 025° - BP401, then turn right until joining ARC 15 NM PES DME. Crossing RDL 031 PES VOR turn right until joining RDL 039 PES VOR (TR 219°) bound to VADKI.

MEL/MEA: IDLOD – BP401: FL100; BP401 – INT ARC 15 NM PES DME/RDL 354 PES VOR: 6000 FT; INT ARC 15 NM PES DME/RDL 354 PES VOR – VADKI: 2000 FT

1) NOTA/REMARK: STAR IDLOL 2M tra/between IDLOL e/and BP401 navigabile secondo la specifica RNAV5/flyable according RNAV 5 specification.

INKIM 2M

INKIM – TR 174° (RDL 354 PES VOR) until 17 NM PES DME, then turn left until joining ARC 15 NM PES DME. Crossing RDL 031 PES VOR turn right until joining RDL 039 PES VOR (TR 219°) bound to VADKI.

MEA: INKIM – RDL 354/17 NM PES VOR/DME: TRL; RDL 354/17 NM PES VOR/DME – VADKI: 2000 FT

OTRET 2M (ATC discretion)

OTRET – turn left until joining ARC 15 NM PES DME. Crossing RDL 031 PES VOR turn right until joining RDL 039 PES VOR (TR 219°) bound to VADKI.

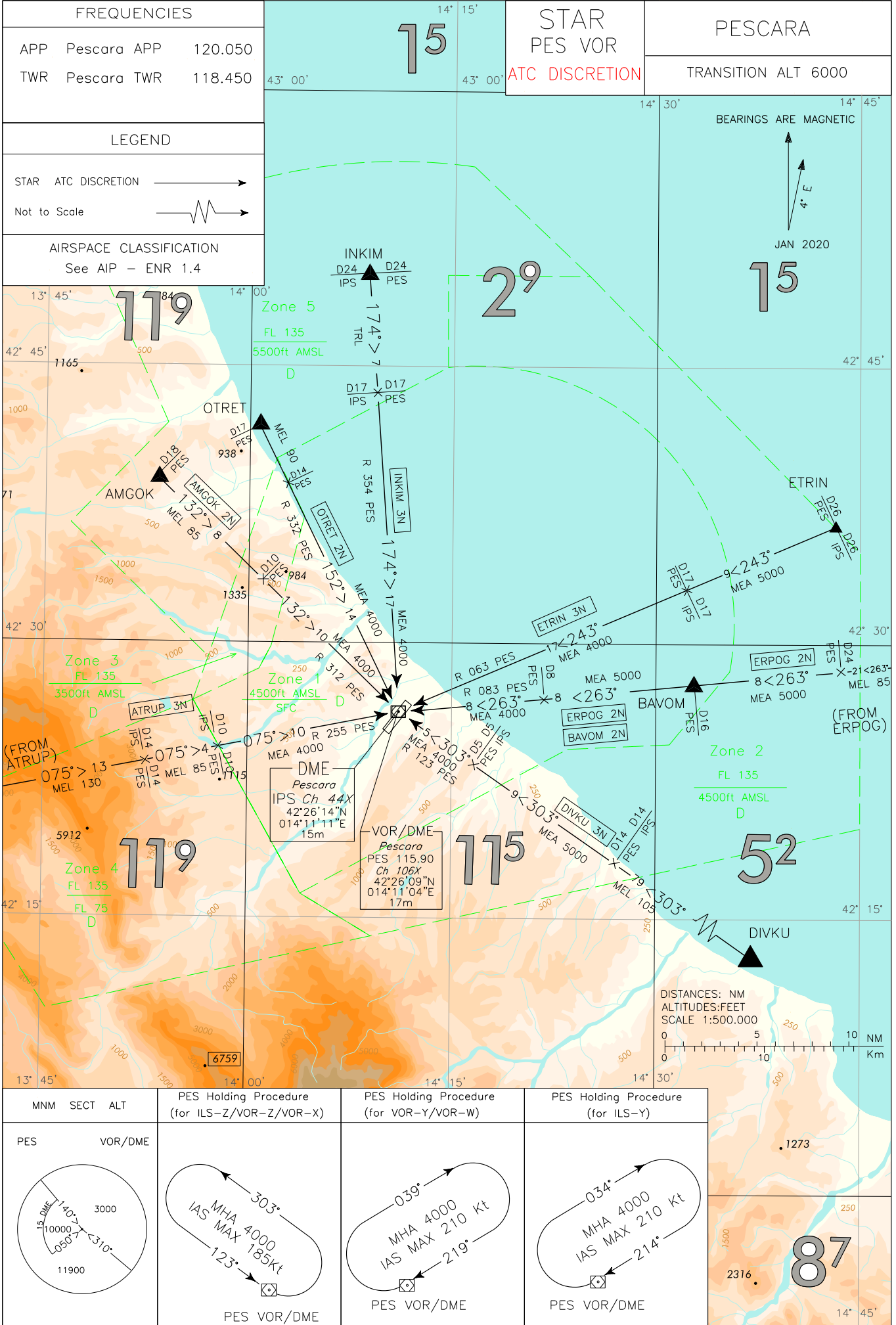
MEA: OTRET – INT ARC 15 NM PES DME/RDL 354 PES VOR: 6000FT; INT ARC 15 NM PES DME/RDL 354 PES VOR – VADKI: 2000 FT

WAYPOINT LIST

Waypoint Identifier	Coordinates
BP401	42°39'50.71" N 014°02'43.04" E

Intenzionalmente bianca

Intentionally left blank



CHANGE: CHART UPDATED

FREQUENCIES	
APP Pescara APP	120.050
TWR Pescara TWR	118.450
LEGEND	
STAR ATC DISCRETION	
Not to Scale	
AIRSPACE CLASSIFICATION	
See AIP - ENR 1.4	

MNM	SECT	ALT	PES Holding Procedure (for ILS-Z/VOR-Z/VOR-X)	PES Holding Procedure (for VOR-Y/VOR-W)	PES Holding Procedure (for ILS-Y)
PES	VOR/DME				

STAR Description
for PES VOR
ATC discretion

AMGOK 2N

AMGOK – TR 132° (RDL 312 PES VOR) – PES VOR/DME.

MEL/MEA: AMGOK –RDL 312/10 NM PES VOR/DME: FL85; RDL 312/10 NM PES VOR/DME – PES VOR/DME: 4000 FT

ATRUP 3N

ATRUP – TR 075° (RDL 255 PES VOR) – PES VOR/DME.

MEL/MEA: ATRUP - RDL 255/14 NM PES VOR/DME (or RDL 255 PES VOR/14 NM IPS DME): FL 130; RDL 255/14 NM PES VOR/DME (or RDL 255 PES VOR/14 NM IPS DME) – RDL 255/10 NM PES VOR/DME (or RDL 255 PES VOR/10 NM IPS DME): FL85; RDL 255/10 NM PES VOR/DME (or RDL 255 PES VOR/10 NM IPS DME) – PES VOR/DME: 4000 FT

BAVOM 2N

BAVOM – TR 263° (RDL 083 PES VOR) – PES VOR/DME.

MEA: BAVOM – RDL 083/8 NM PES VOR/DME: 5000FT; RDL 083/8 NM PES VOR/DME - PES VOR/DME: 4000 FT

DIVKU 3N

DIVKU – TR 303° (RDL 123 PES VOR) – PES VOR/DME.

MEL/MEA: DIVKU – RDL 123/14 NM PES VOR/DME (or RDL 123 PES VOR/14 NM IPS DME): FL 105; RDL 123/14 NM PES VOR/DME (or RDL 123 PES VOR/14 NM IPS DME) – RDL 123/5 NM PES VOR/DME (or RDL 123 PES VOR/5 NM IPS DME): 5000 FT; RDL 123/5 NM PES VOR/DME (or RDL 123 PES VOR/5 NM IPS DME) – PES VOR/DME: 4000 FT

ERPOG 2N

ERPOG – TR 263° (RDL 083 PES VOR) – PES VOR/DME.

MEL/MEA: ERPOG – RDL 083/24 NM PES VOR/DME: FL 85; RDL 083/24 NM PES VOR/DME – RDL 083/8 NM PES VOR/DME: 5000 FT; RDL 083/8 NM PES VOR/DME – PES VOR/DME: 4000 FT

ETRIN 3N

ETRIN – TR 243° (RDL 063 PES VOR) – PES VOR/DME.

MEA: ETRIN – RDL 063/17 NM PES VOR/DME (or RDL 063 PES VOR/17 NM IPS DME): 5000 FT; RDL 063/17 NM PES VOR/DME (or RDL 063 PES VOR/17 NM IPS DME) – PES VOR/DME: 4000 FT

INKIM 3N

INKIM – TR 174° (RDL 354 PES VOR) – PES VOR/DME.

MEL/MEA: INKIM – RDL 354/17 NM PES VOR/DME (or RDL 354 PES VOR/17 NM IPS DME): TRL; RDL 354/17 NM PES VOR/DME (or RDL 354 PES VOR/17 NM IPS DME) – PES VOR/DME: 4000 FT

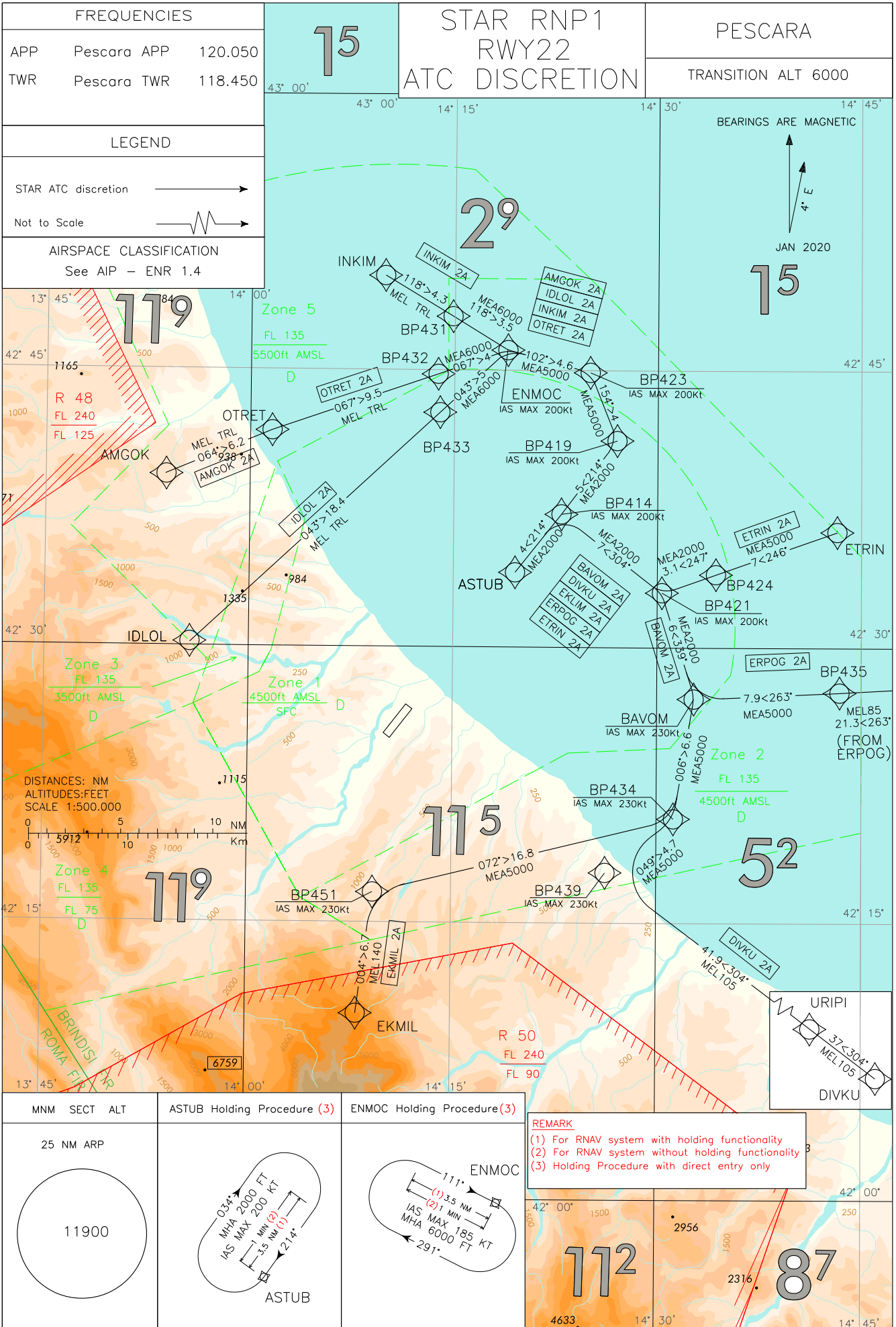
OTRET 2N

OTRET – TR 152° (RDL 332 PES VOR) – PES VOR/DME.

MEL/MEA: OTRET – RDL 332/14 NM PES VOR/DME: FL 90; RDL 332/14 NM PES VOR/DME – PES VOR/DME: 4000 FT

Intenzionalmente bianca

Intentionally left blank



STAR RNP1 ATC Discretion
RWY22 Pescara

AMGOK 2A (ATC discretion)

Path Terminator	Waypoint Identifier	Fly Over	Course °M(°T)	Magnetic Variation	Distance (NM)	Turn Direction	Altitude (ft)	Speed Limit (kt)	Navigation Specification
IF	AMGOK	-	-	-	-	-	-	-250	RNP
TF	OTRET	-	064° (067.6)	-	6.2	-	+TRL	-250	RNP
TF	BP432	-	067° (070.6)	-	9.5	-	+TRL	-250	RNP
TF	ENMOC	-	067° (070.8)	-	4.0	-	+6000	-200	RNP
TF	BP423	-	102° (105.6)	-	4.6	-	+5000	-200	RNP
TF	BP419	-	154° (157.8)	-	4.0	-	+5000	-200	RNP
TF	BP414	-	214° (217.8)	-	5.0	-	+2000	-200	RNP
TF	ASTUB	-	214° (217.8)	-	4.0	-	+2000	-200	RNP

BAVOM 2A (ATC discretion)

Path Terminator	Waypoint Identifier	Fly Over	Course °M(°T)	Magnetic Variation	Distance (NM)	Turn Direction	Altitude (ft)	Speed Limit (kt)	Navigation Specification
IF	BAVOM	-	-	-	-	-	-	-230	RNP
TF	BP421	-	339° (343.1)	-	6.0	-	+2000	-200	RNP
TF	BP414	-	304° (307.9)	-	7.0	-	+2000	-200	RNP
TF	ASTUB	-	214° (217.8)	-	4.0	L	+2000	-200	RNP

DIVKU 2A (ATC discretion)

Path Terminator	Waypoint Identifier	Fly Over	Course °M(°T)	Magnetic Variation	Distance (NM)	Turn Direction	Altitude (ft)	Speed Limit (kt)	Navigation Specification
IF	DIVKU	-	-	-	-	-	-	-250	RNP
TF	URIPI	-	304° (307.7)	-	37.0	-	+FL105	-250	RNP
TF	BP439	-	304° (307.3)	-	41.9	-	+FL105	-230	RNP
TF	BP434	-	049° (052.4)	-	4.7	R	+5000	-230	RNP
TF	BAVOM	-	006° (009.5)	-	6.6	-	+5000	-230	RNP
TF	BP421	-	339° (343.1)	-	6.0	-	+2000	-200	RNP
TF	BP414	-	304° (307.9)	-	7.0	-	+2000	-200	RNP
TF	ASTUB	-	214° (217.8)	-	4.0	L	+2000	-200	RNP

EKMIL 2A (ATC discretion)

Path Terminator	Waypoint Identifier	Fly Over	Course °M(°T)	Magnetic Variation	Distance (NM)	Turn Direction	Altitude (ft)	Speed Limit (kt)	Navigation Specification
IF	EKMIL	-	-	-	-	-	-	-250	RNP
TF	BP451	-	004° (008.0)	-	6.7	-	+FL140	-230	RNP
TF	BP434	-	072° (076.1)	-	16.8	-	+5000	-230	RNP
TF	BAVOM	-	006° (009.5)	-	6.6	-	+5000	-230	RNP
TF	BP421	-	339° (343.1)	-	6.0	-	+2000	-200	RNP
TF	BP414	-	304° (307.9)	-	7.0	-	+2000	-200	RNP
TF	ASTUB	-	214° (217.8)	-	4.0	L	+2000	-200	RNP

ERPOG 2A (ATC discretion)

Path Terminator	Waypoint Identifier	Fly Over	Course °M(°T)	Magnetic Variation	Distance (NM)	Turn Direction	Altitude (ft)	Speed Limit (kt)	Navigation Specification
IF	ERPOG	-	-	-	-	-	-	-250	RNP
TF	BP435	-	263° (267.2)	-	21.3	-	+FL85	-250	RNP
TF	BAVOM	-	263° (267.2)	-	7.9	-	+5000	-230	RNP
TF	BP421	-	339° (343.1)	-	6.0	-	+2000	-200	RNP
TF	BP414	-	304° (307.9)	-	7.0	-	+2000	-200	RNP
TF	ASTUB	-	214° (217.8)	-	4.0	L	+2000	-200	RNP

ETRIN 2A (ATC discretion)

Path Terminator	Waypoint Identifier	Fly Over	Course °M(°T)	Magnetic Variation	Distance (NM)	Turn Direction	Altitude (ft)	Speed Limit (kt)	Navigation Specification
IF	ETRIN	-	-	-	-	-	-	-250	RNP
TF	BP424	-	246° (250.2)	-	7.0	-	+5000	-250	RNP
TF	BP421	-	247° (250.4)	-	3.1	-	+2000	-200	RNP
TF	BP414	-	304° (307.9)	-	7.0	-	+2000	-200	RNP
TF	ASTUB	-	214° (217.8)	-	4.0	L	+2000	-200	RNP

IDLOL 2A (ATC discretion)

Path Terminator	Waypoint Identifier	Fly Over	Course °M(°T)	Magnetic Variation	Distance (NM)	Turn Direction	Altitude (ft)	Speed Limit (kt)	Navigation Specification
TF	IDLOL	-	-	-	-	-	-	-250	RNP
TF	BP433	-	043° (046.9)	-	18.4	-	+TRL	-250	RNP
TF	ENMOC	-	043° (047.1)	-	5.0	-	+6000	-200	RNP
TF	BP423	-	102° (105.6)	-	4.6	-	+5000	-200	RNP
TF	BP419	-	154° (157.8)	-	4.0	-	+5000	-200	RNP
TF	BP414	-	214° (217.8)	-	5.0	-	+2000	-200	RNP
TF	ASTUB	-	214° (217.8)	-	4.0	-	+2000	-200	RNP

INKIM 2A (ATC discretion)

Path Terminator	Waypoint Identifier	Fly Over	Course °M(°T)	Magnetic Variation	Distance (NM)	Turn Direction	Altitude (ft)	Speed Limit (kt)	Navigation Specification
TF	INKIM	-	-	-	-	-	-	-250	RNP
TF	BP431	-	118° (121.2)	-	4.3	-	+TRL	-250	RNP
TF	ENMOC	-	118° (121.3)	-	3.5	-	+6000	-200	RNP
TF	BP423	-	102° (105.6)	-	4.6	-	+5000	-200	RNP
TF	BP419	-	154° (157.8)	-	4.0	-	+5000	-200	RNP
TF	BP414	-	214° (217.8)	-	5.0	-	+2000	-200	RNP
TF	ASTUB	-	214° (217.8)	-	4.0	-	+2000	-200	RNP

OTRET 2A (ATC discretion)

Path Terminator	Waypoint Identifier	Fly Over	Course °M(°T)	Magnetic Variation	Distance (NM)	Turn Direction	Altitude (ft)	Speed Limit (kt)	Navigation Specification
TF	OTRET	-	-	-	-	-	-	-250	RNP
TF	BP432	-	067° (070.6)	-	9.5	-	+TRL	-250	RNP
TF	ENMOC	-	067° (070.8)	-	4.0	-	+6000	-200	RNP
TF	BP423	-	102° (105.6)	-	4.6	-	+5000	-200	RNP
TF	BP419	-	154° (157.8)	-	4.0	-	+5000	-200	RNP
TF	BP414	-	214° (217.8)	-	5.0	-	+2000	-200	RNP
TF	ASTUB	-	214° (217.8)	-	4.0	-	+2000	-200	RNP

Holding RNAV

Path Terminator	Waypoint Identifier	Inbound Course °M (°T)	Leg Distance (NM) (1)	Timing(min.)/ Waypoint Distance (NM) (2)	Turn Direction	Minimum Altitude (FT)	Maximum Altitude (FL)	Speed Limit (kt)	Magnetic Variation (°)	Navigation Specification
HM (3)	ASTUB	214° (217.8°)	3.5	1 / -	R	2000	-	-200	3.7	RNP
HM (3)	ENMOC	111° (115.0°)	3.5	1 / -	R	6000	-	-185	3.7	RNP

(1) RNAV system with holding functionality

(2) RNAV system without holding functionality

(3) Holding procedure with "direct entry" only

WAYPOINT LIST

Waypoint Identifier	Coordinates
BP414	42°37'14.16" N 014°22'51.37" E
BP419	42°41'11.27" N 014°27'00.56" E
BP421	42°32'56.55" N 014°30'20.49" E
BP423	42°44'53.57" N 014°24'57.61" E
BP424	42°33'58.91" N 014°34'17.71" E
BP431	42°47'57.09" N 014°14'51.61" E
BP432	42°44'48.96" N 014°13'47.71" E
BP433	42°42'44.02" N 014°13'56.75" E
BP434	42°20'39.79" N 014°31'14.57" E
BP435	42°27'34.87" N 014°43'25.40" E
BP439	42°17'46.95" N 014°26'11.68" E
BP451	42°16'40.26" N 014°09'15.70" E

Intenzionalmente bianca

Intentionally left blank