

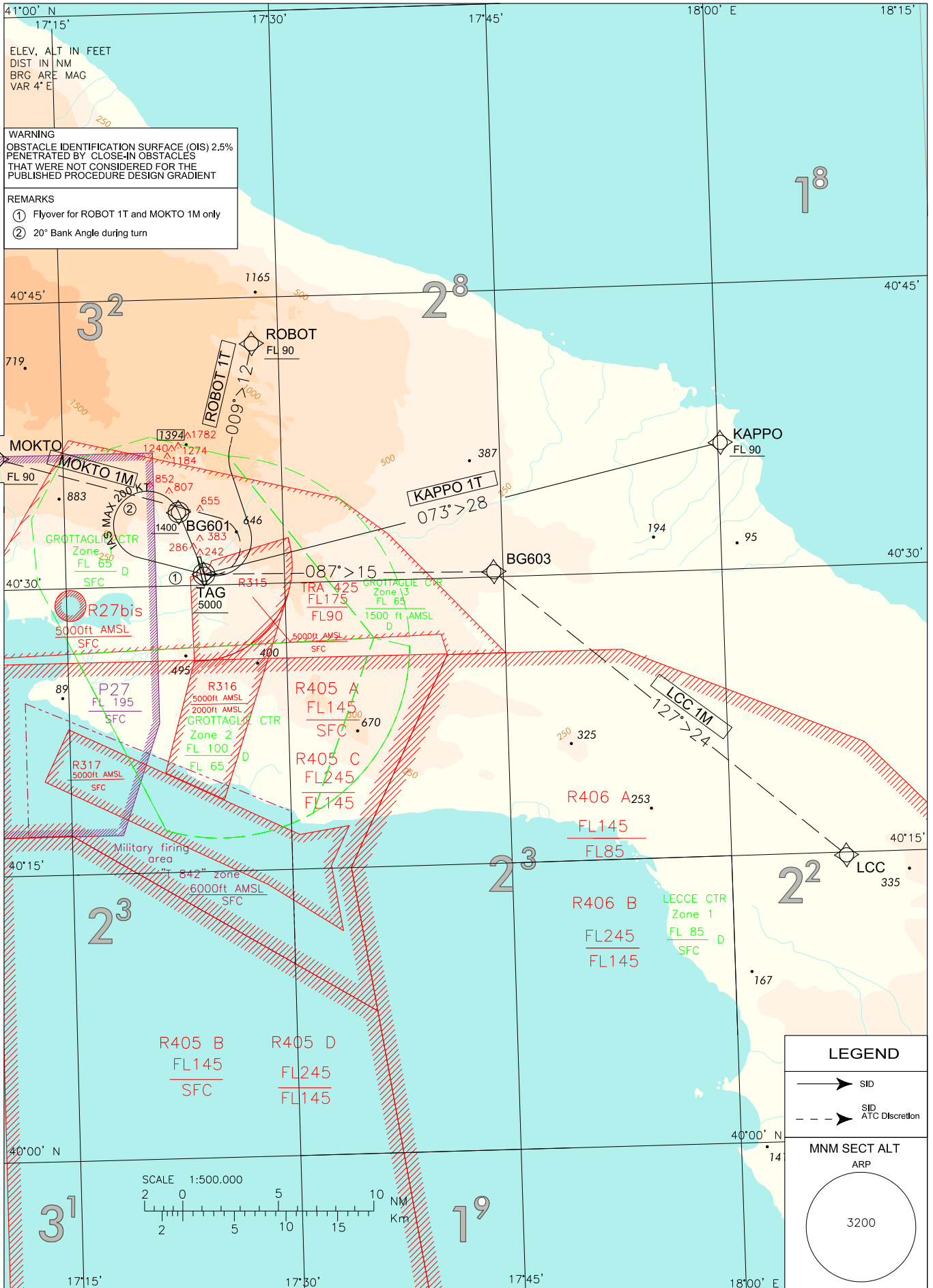
STANDARD DEPARTURE CHART - INSTRUMENT (SID) - ICAO

TRANSITIONAL ALT
5000 FT

APP 118.700
TWR 118.700

TARANTO (LIBG) RNP 1 RWY 35

ROBOT 1T KAPPO 1T
LCC 1M MOKTO 1M



INITIAL CLIMB PROCEDURE RWY 35

WARNING: Obstacles identification surface (OIS 2.5%) penetrated by obstacles that were not considered for the published procedure design gradient.

REMARK: Minimum climb gradient 7.5% (455 FT/NM) until leaving 5000 FT
Bank angle 20° during the first turn.

SID DESCRIPTION RWY 35**KAPPO 1T**

Path Terminator	Waypoint Identifier	Fly Over	Course °M (°T)	Magnetic Variation	Distance (NM)	Turn Direction	Altitude (ft)	Speed Limit (kt)	Navigation Specification
CA	-	-	345 (348.6)	-	-	-	+615	-	RNP1
DF	BG601	Y	-	-	-	-	+1400	-200	RNP1
DF	TAG	-	-	-	-	L	+5000	-200	RNP1
TF	KAPPO	-	073 (077.2)	-	27.9	-	+FL90	-	RNP1

LCC 1M (ATC Discretion)

Path Terminator	Waypoint Identifier	Fly Over	Course °M (°T)	Magnetic Variation	Distance (NM)	Turn Direction	Altitude (ft)	Speed Limit (kt)	Navigation Specification
CA	-	-	345 (348.6)	-	-	-	+615	-	RNP1
DF	BG601	Y	-	-	-	-	+1400	-200	RNP1
DF	TAG	-	-	-	-	L	+5000	-200	RNP1
TF	BG603	-	087 (091)	-	15.2	-	-	-	RNP1
TF	LCC	-	127 (130.5)	-	23.7	-	-	-	RNP1

MOKTO 1M (ATC Discretion)

Path Terminator	Waypoint Identifier	Fly Over	Course °M (°T)	Magnetic Variation	Distance (NM)	Turn Direction	Altitude (ft)	Speed Limit (kt)	Navigation Specification
CA	-	-	345 (348.6)	-	-	-	+615	-	RNP1
DF	BG601	Y	-	-	-	-	+1400	-200	RNP1
DF	TAG	Y	-	-	-	L	+5000	-200	RNP1
DF	MOKTO	-	-	-	-	L	*FL90	-	RNP1

ROBOT 1T

Path Terminator	Waypoint Identifier	Fly Over	Course °M (°T)	Magnetic Variation	Distance (NM)	Turn Direction	Altitude (ft)	Speed Limit (kt)	Navigation Specification
CA	-	-	345 (348.6)	-	-	-	+615	-	RNP1
DF	BG601	Y	-	-	-	-	+1400	-200	RNP1
DF	TAG	Y	-	-	-	L	+5000	-200	RNP1
TF	ROBOT	-	009 (113.2)	-	12.3	L	+FL90	-	RNP1

WAYPOINTS LIST

Waypoint Identifier	Coordinates
BG601	40°34'02.54"N – 017°22'45.12"E
BG603	40°30'16.26"N – 017°44'21.39"E

INITIAL CLIMB PROCEDURE RWY 17

WARNING: Obstacles identification surface (OIS 2.5%) penetrated by obstacles that were not considered for the published procedure design gradient.

REMARK: Minimum climb gradient 6.6% (400 FT/NM) until leaving 5000 FT

SID DESCRIPTION RWY 17**KAPPO 1H**

Path Terminator	Waypoint Identifier	Fly Over	Course °M (°T)	Magnetic Variation	Distance (NM)	Turn Direction	Altitude (ft)	Speed Limit (kt)	Navigation Specification
CA	-	-	165 (168.6)	-	-	-	+604	-	RNP1
DF	BG602	Y	-	-	-	-	+1500	-220	RNP1
DF	BG604	-	-	-	-	L	+5000	-220	RNP1
TF	KAPPO	-	073 (077.4)	-	15.8	-	+FL90	-	RNP1

LCC 1H (ATC Discretion)

Path Terminator	Waypoint Identifier	Fly Over	Course °M (°T)	Magnetic Variation	Distance (NM)	Turn Direction	Altitude (ft)	Speed Limit (kt)	Navigation Specification
CA	-	-	165 (168.6)	-	-	-	+604	-	RNP1
DF	BG602	Y	-	-	-	-	+1500	-220	RNP1
DF	BG604	-	-	-	-	L	+5000	-220	RNP1
TF	LCC	-	127 (130.6)	-	28.2	R	-	-	RNP1

MOKTO 1H (ATC Discretio)

Path Terminator	Waypoint Identifier	Fly Over	Course °M (°T)	Magnetic Variation	Distance (NM)	Turn Direction	Altitude (ft)	Speed Limit (kt)	Navigation Specification
CA	-	-	165 (168.6)	-	-	-	+604	-	RNP1
DF	BG602	Y	-	-	-	-	+1500	-220	RNP1
DF	BG606	-	-	-	-	L	+5000	-220	RNP1
TF	MOKTO	-	280 (284.1)	-	13.3	-	+FL90	-	RNP1

ROBOT 1H

Path Terminator	Waypoint Identifier	Fly Over	Course °M (°T)	Magnetic Variation	Distance (NM)	Turn Direction	Altitude (ft)	Speed Limit (kt)	Navigation Specification
CA	-	-	165 (168.6)	-	-	-	+604	-	RNP1
DF	BG602	Y	-	-	-	-	+1500	-220	RNP1
DF	BG606	-	-	-	-	L	+5000	-220	RNP1
TF	ROBOT	-	360 (003.9)	-	8.9	-	+FL90	-	RNP1

WAYPOINTS LIST

Waypoint Identifier	Coordinates
BG602	40°26'38.14"N – 017°25'21.47"E
BG604	40°33'13.66"N – 017°39'53.37"E
BG606	40°33'39.74"N – 017°27'22.43"E

FREQUENCIES	
TWR	Grottaglie 118.700
TWR	TWR
APP	Grottaglie 118.700
APP	APP
LEGEND	
	SID
	SID ATC Discretion
	Initial Climb

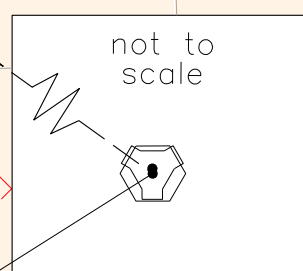
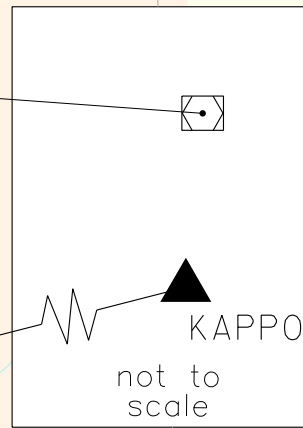
JAN 2020
(TAG VOR)

1719

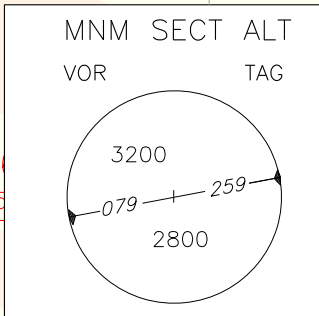
SID VOR RWY 35	TARANTO GROTTAGLIE TRANSITION ALT 5000
WARNING CLOSE-IN OBSTACLES PENETRATE OBSTACLE IDENTIFICATION SURFACE (OIS) 2.5% EXIST BUT THEY WERE NOT CONSIDERED FOR THE PUBLISHED PROCEDURES DESIGN GRADIENT	

REMARK
(1) MCA 5000ft only for traffic destination LIBR

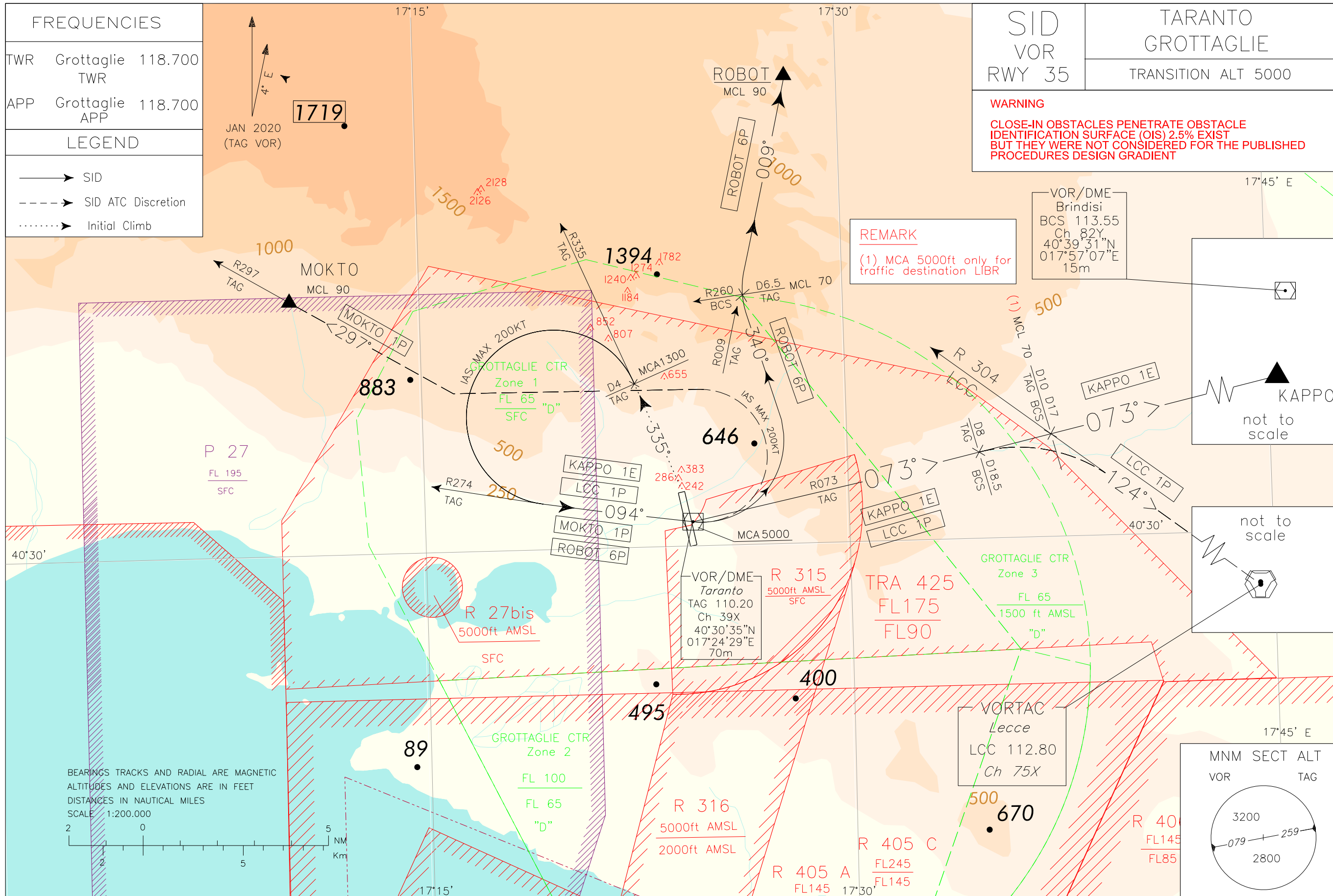
VOR/DME
Brindisi
BCS 113.55
Ch 82Y
40°39'31"N
017°57'07"E
15m



VORTAC
Lecce
LCC 112.80
Ch 75X



CHANGE: REPRINTING



BEARINGS TRACKS AND RADIAL ARE MAGNETIC
ALTITUDES AND ELEVATIONS ARE IN FEET
DISTANCES IN NAUTICAL MILES
SCALE 1:200,000

DEPARTURES FROM RWY 35**Initial climb procedure**

After take-off proceed on RDL 335 TAG VOR (TR 335°) until 4NM TAG DME (MCA 1300 ft).

Minimum climb gradient (PDG): 360 ft/NM (5.9%) until passing 5000 ft.

WARNING

Close-in obstacles penetrate Obstacle Identification Surface (OIS) 2.5%, but they were not considered for the published procedures design gradient.

REMARK

Pilots shall adopt a minimum climb gradient in accordance with ICAO Annex 6 provision for a safe obstacles overflying. Such climb gradient shall be maintained in any foreseeable circumstance.

SIDs DESCRIPTION

Initial climb procedure completed:

KAPPO 1E

Turn left (IAS MAX 200 kt during turn) until joining RDL 274 TAG VOR (TR 094°) bound to TAG VOR, to be left on RDL 073 TAG VOR (TR 073°) bound to KAPPO.

MCA/MCL: TAG VOR/DME, 5000 FT; RDL 073/10NM TAG VOR/DME (or 17NM BCS DME), FL 70
(5000 FT only for traffic destination LIBR)

LCC 1P (ATC Discretion)

Turn left (IAS MAX 200 kt during turn) until joining RDL 274 TAG VOR (TR 094°) bound to TAG VOR, to be left on RDL 073 TAG VOR (TR 073°). AT 8NM TAG DME (15NM BCS DME) turn right on RDL 304 LCC VOR (TR 124°) bound to LCC VOR.

MCA: TAG VOR/DME, 5000 FT

MOKTO 1P (ATC Discretion)

Turn left (IAS MAX 200 kt during turn) until joining RDL 274 TAG VOR (TR 094°) bound to TAG VOR, then turn left (IAS MAX 200 kt during turn) to join and follow RDL 297 (TR 297°) bound to MOKTO.

MCA/MCL: TAG VOR/DME, 5000 FT; MOKTO FL 90

ROBOT 6P

Turn left (IAS MAX 200 kt during turn) until joining RDL 274 TAG VOR (TR 094°) bound to TAG VOR, then turn left on TR 340° until joining RDL 009 TAG VOR (TR 009°) bound to ROBOT.

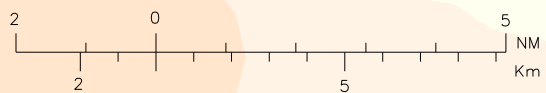
MCA/MCL: TAG VOR/DME, 5000 FT; RDL 009/6.5NM TAG VOR/DME (or INT RDL 009 TAG VOR/RDL 260 BCS VOR, FL 70; ROBOT, FL 90

Intenzionalmente bianca

Intentionally left blank

FREQUENCIES		
TWR	Grottaglie	118.700
	TWR	
APP	Grottaglie	118.700
	APP	
LEGEND		
	Initial Climb	
	SID	
	SID ATC Discretion	

BEARINGS TRACKS AND RADIAL ARE MAGNETIC
 ALTITUDES AND ELEVATIONS ARE IN FEET
 DISTANCES IN NAUTICAL MILES
 SCALE 1:200.000



JAN 2020
 (TAG VOR)

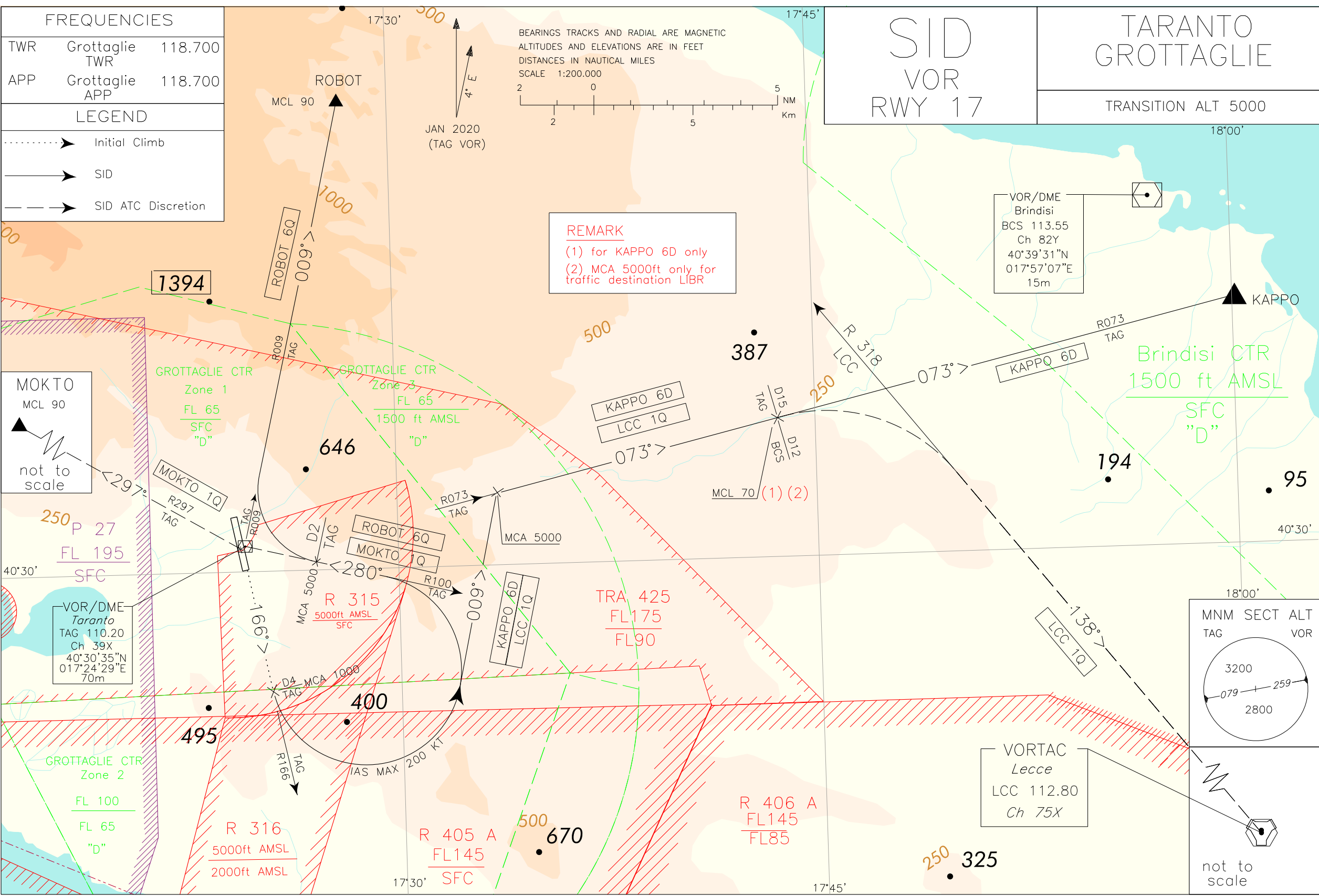
SID
 VOR
 RWY 17

TARANTO
 GROTTAGLIE

TRANSITION ALT 5000

REMARK
 (1) for KAPPO 6D only
 (2) MCA 5000ft only for
 traffic destination LIBR

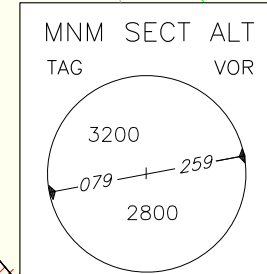
CHANGE: KAPPO 5Q WITHDRAWN. KAPPO 6D AND ROBOT 6Q REVISED. LCC 1Q AND MOKTO 1Q IMPLEMENTED. CHART RENUMBERED



MOKTO
 MCL 90
 not to scale

VOR/DME
 Taranto
 TAG 110.20
 Ch 39X
 40°30'35"N
 017°24'29"E
 70m

VOR/DME
 Brindisi
 BCS 113.55
 Ch 82Y
 40°39'31"N
 017°57'07"E
 15m



VORTAC
 Lecce
 LCC 112.80
 Ch 75X

not to scale

DEPARTURES FROM RWY 17**Initial climb procedure**

After take-off proceed on RDL 166 TAG VOR (TR 166°) until 4 NM TAG DME (MCA 1000 ft).

Minimum climb gradient (PDG): 360 ft/NM (5.9%) until passing 5000 ft (FL 90 for MOKTO 1Q and ROBOT 6Q).

REMARK

Pilots shall adopt a minimum climb gradient in accordance with ICAO Annex 6 provision for a safe obstacles overflying. Such climb gradient shall be maintained in any foreseeable circumstance.

SIDs DESCRIPTION

Initial climb procedure completed:

KAPPO 6D

Turn left (IAS MAX 200 kt during turn) on TR 009° until joining RDL 073 TAG VOR bound to KAPPO.

MCA/MCL: INT TR 009°/RDL 073 TAG VOR, 5000 FT; INT RDL 073/15NM TAG VOR/DME (or INT RDL 073 TAG VOR/12NM BCS DME), FL 70 (5000 FT only for traffic destination LIBR)

LCC 1Q (ATC Discretion)

Turn left (IAS MAX 200 kt during turn) on TR 009° until joining RDL 073 TAG VOR (TR 073°). AT 15NM TAG DME (12NM BCS DME) turn right to join and follow RDL 318 LCC VOR (TR 138°) bound to LCC VOR.

MCA: INT TR 009°/RDL 073 TAG VOR, 5000 FT

MOKTO 1Q (ATC Discretion)

Turn left (IAS MAX 200 kt during turn) until joining RDL 100 TAG VOR (TR 280°) bound to TAG VOR to be left on RDL 297 (TR 297°) bound to MOKTO.

MCA/MCL: INT RDL 100/2NM TAG VOR/DME, 5000 FT; MOKTO, FL 90

ROBOT 6Q

Turn left (IAS MAX 200 kt during turn) to join and follow RDL 100 TAG VOR (TR 280°) until 2NM TAG DME, then turn right (IAS MAX 200 kt during turn) until joining RDL 009 TAG VOR (TR 009°) bound to ROBOT.

MCA/MCL: INT RDL 100/2NM TAG VOR/DME, 5000 FT; ROBOT, FL 90

Intenzionalmente bianca

Intentionally left blank