

STAR RNP1 RWY35 – Taranto Grottaglie**KAPPO 1X**

Path Terminator	Waypoint Identifier	Fly Over	Course °M (°T)	Magnetic Variation	Distance (NM)	Turn Direction	Altitude (ft)	Speed Limit (kt)	Navigation Specification
IF	KAPPO	-	-	-	-	-	-	-	RNP1
TF	BG401	-	255 (258.8)	-	10.0	-	+FL 70	-	RNP1
TF	MEFRE	-	255 (258.7)	-	13.6	-	+5000	-	RNP1

LCC 1X (ATC Discretion)

Path Terminator	Waypoint Identifier	Fly Over	Course °M (°T)	Magnetic Variation	Distance (NM)	Turn Direction	Altitude (ft)	Speed Limit (kt)	Navigation Specification
IF	LCC	-	-	-	-	-	-	-	RNP1
TF	BG403	-	306 (310.2)	-	21.8	-	+FL 70	-	RNP1
TF	BG402	-	306 (310.0)	-	7.0	-	+5000	-230	RNP1
TF	MEFRE	-	255 (258.6)	-	7.0	-	+5000	-	RNP1

MOKTO 1X (ATC Discretion)

Path Terminator	Waypoint Identifier	Fly Over	Course °M (°T)	Magnetic Variation	Distance (NM)	Turn Direction	Altitude (ft)	Speed Limit (kt)	Navigation Specification
IF	MOKTO	-	-	-	-	-	-	-	RNP1
TF	MEFRE	-	104 (108.0)	-	15.6	-	+5000	-	RNP1

ROBOT 1X

Path Terminator	Waypoint Identifier	Fly Over	Course °M (°T)	Magnetic Variation	Distance (NM)	Turn Direction	Altitude (ft)	Speed Limit (kt)	Navigation Specification
IF	ROBOT	-	-	-	-	-	-	-	RNP1
TF	MEFRE	-	169 (172.7)	-	10.6	-	+5000	-	RNP1

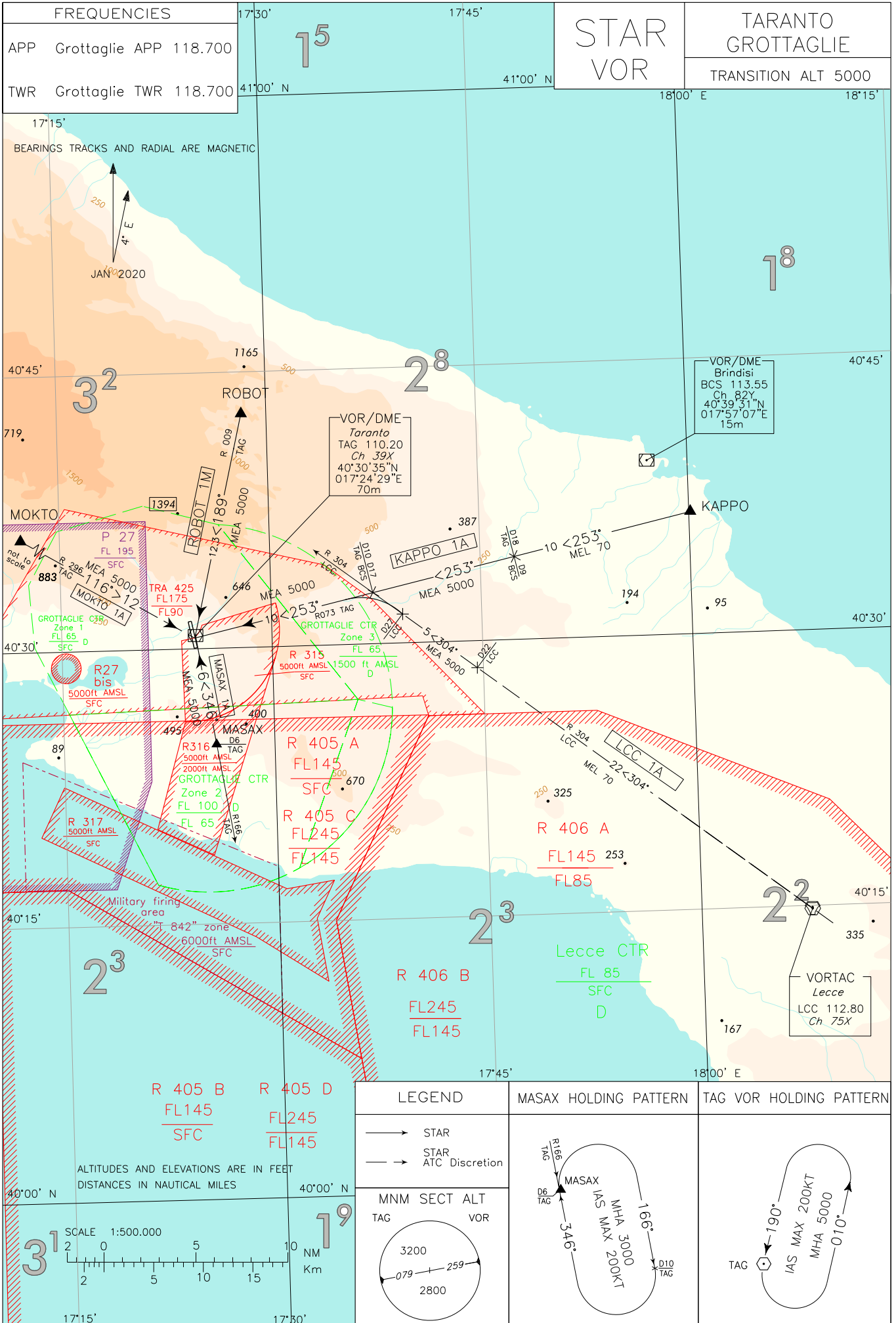
Path Terminator	Waypoint Identifier	Inbound Course °M (°T)	Leg Distance (NM)	Timing (min.)/Waypoint Distance (NM)	Turn Direction	Minimum Altitude (ft)	Maximum Altitude (ft)	Speed Limit (kt)	Magnetic Variation (°)	Navigation Specification
HM	MEFRE	157 (160.7)	3.9	1/-	L	+5000	-	-210	+4	RNP1

WAYPOINTS LIST

Waypoint Identifier	Coordinates
BG401	40°34'43.05"N – 017°47'27.32"E
BG402	40°33'24.54"N – 017°38'56.69"E
BG403	40°28'54.80"N – 017°45'58.86"E

Intenzionalmente bianca

Intentionally left blank

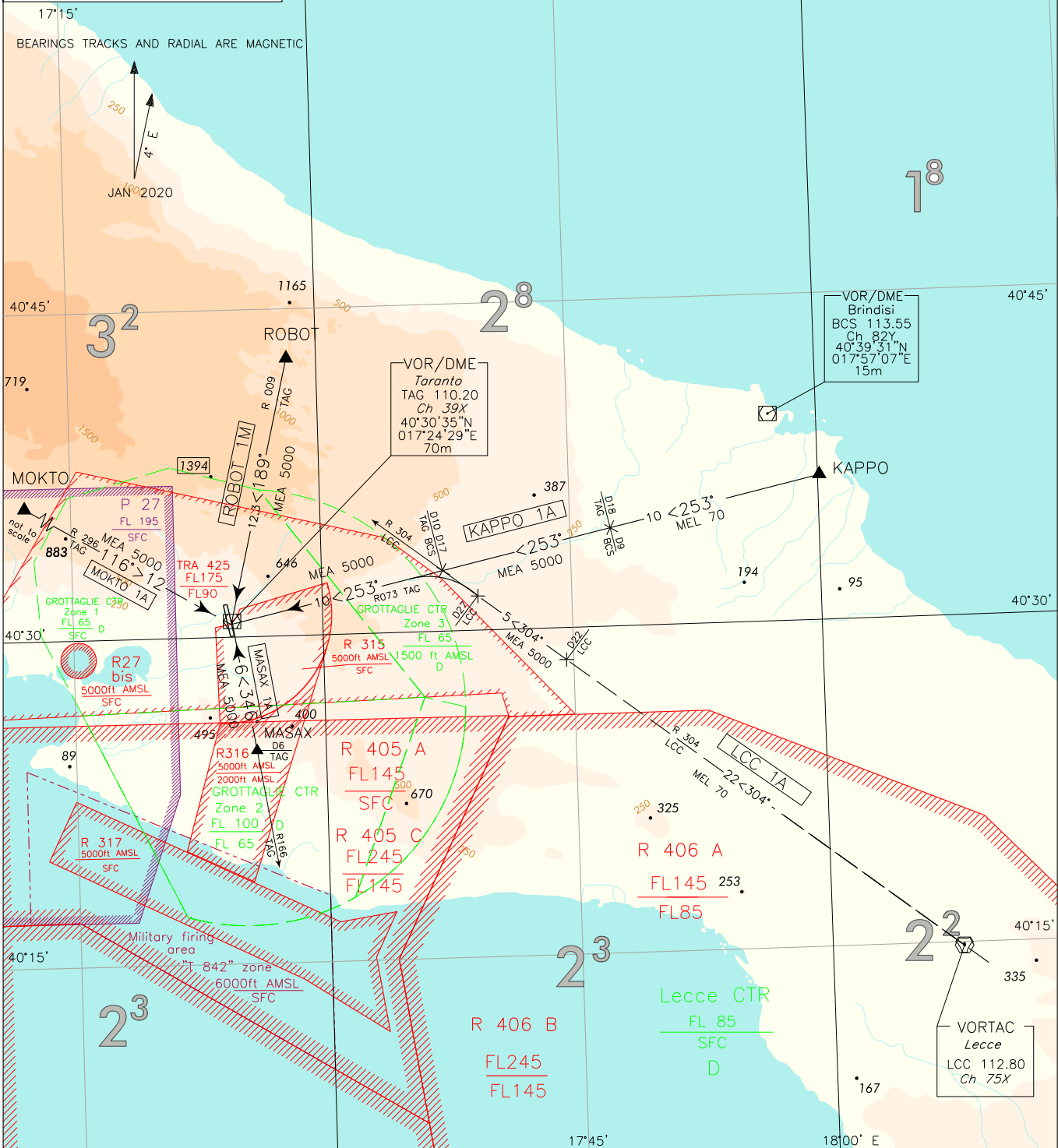


CHANGE: KAPPO 1M, KAPPO 1E, KAPPO 1L AND ROBOT 1L WITHDRAWN. MOKTO 1A, MASAX 1A AND LCC 1A IMPLEMENTED. CHART RENUMBERED

FREQUENCIES	
APP	Grottaglie APP 118.700
TWR	Grottaglie TWR 118.700

STAR
VOR

TARANTO GROTTAGLIE	
TRANSITION ALT 5000	



LEGEND	MASAX HOLDING PATTERN	TAG VOR HOLDING PATTERN
<ul style="list-style-type: none"> → STAR → STAR ATC Discretion 		
MNM SECT ALT		
<p>TAG VOR</p>		

STAR VOR DESCRIPTION**KAPPO 1A**

KAPPO – TR 253° (RDL 073 TAG VOR) – TAG VOR/DME.

MEL/MEA: KAPPO – INT RDL 073/18NM TAG VOR/DME (or 9NM BCS DME): FL 70;
INT RDL 073/18NM TAG VOR/DME (or 9NM BCS DME) – TAG VOR/DME: 5000FT

MASAX 1A (ATC discretion) ⁽¹⁾

MASAX – TR 346° (RDL 166 TAG VOR) – TAG VOR/DME.

MEA: MASAX – TAG VOR/DME: 5000 FT

MOKTO 1A (ATC discretion)

MOKTO – TR 116° (RDL 296 TAG VOR) – TAG VOR/DME.

MEA: MOKTO – TAG VOR/DME: 5000FT

LCC 1A (ATC discretion)

LCC – TR 304° (RDL 304 LCC VOR) until 27 NM LCC TACAN, then turn left until joining RDL 073 TAG VOR (TR 253°) bound to TAG VOR/DME.

MEL/MEA: LCC – INT RDL 304/22NM LCC VORTAC: FL 70;
INT RDL 304/22NM LCC VORTAC – TAG VOR/DME: 5000 FT

ROBOT 1M

ROBOT – TR 189° (RDL 009 TAG VOR) – TAG VOR/DME.

MEA: ROBOT – TAG VOR/DME: 5000FT

(1) Following Missed Approach

Intenzionalmente bianca

Intentionally left blank