



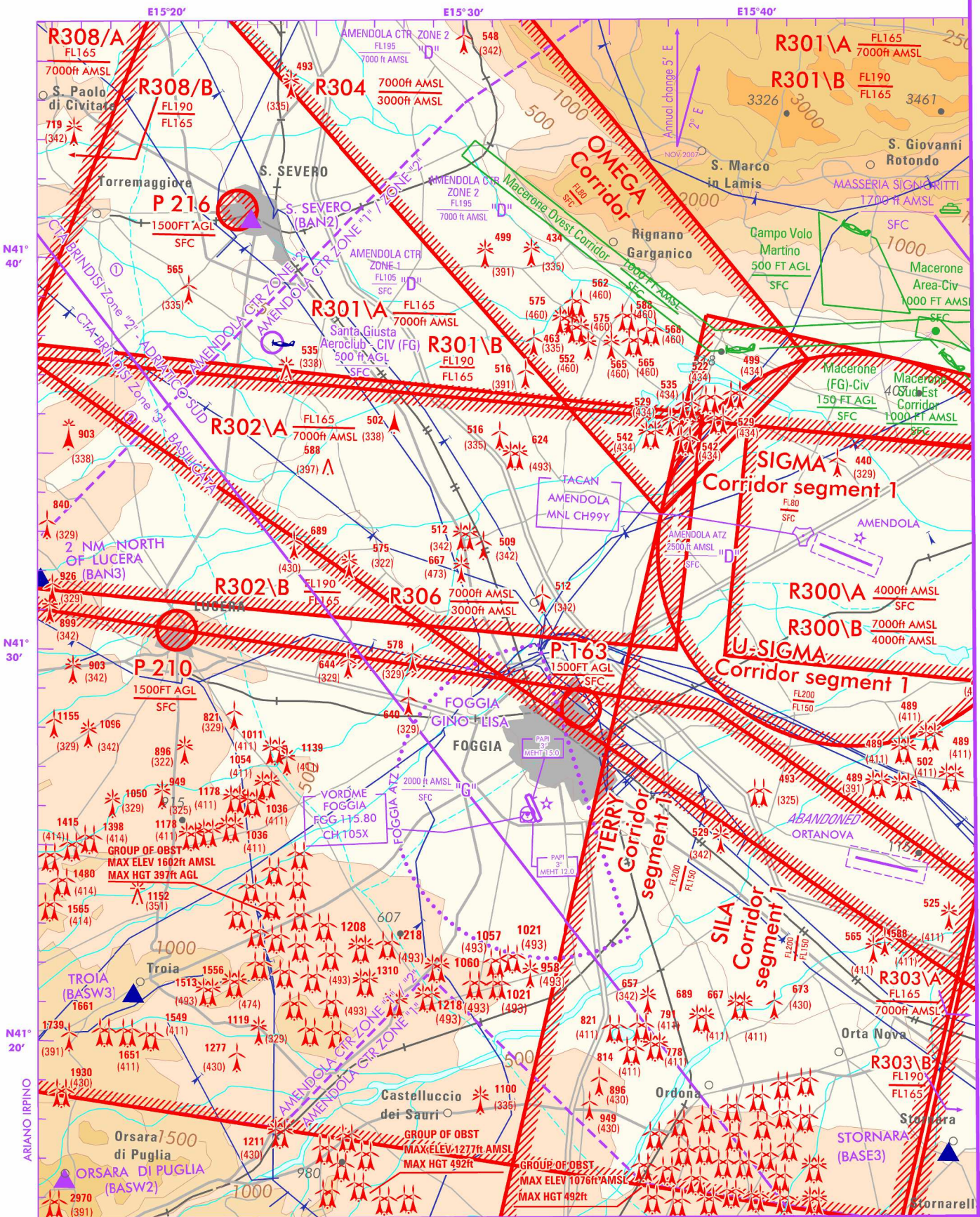
FIS Brindisi Information 125.100
 APP Amendola Approach 118.855
 AFIS Foggia aerodrome Info 120.100

AD ELEV
267

LIBF

FOGGIA
Gino Lisa

CHANGE: ATS GEOGRAPHY UPDATED and "NDB FOG" COMPLETELY WITHDRAWN



AIRSPACE CLASSIFICATION (SEE AIP-ITALIA ENR 1.4)

Note/Remarks:

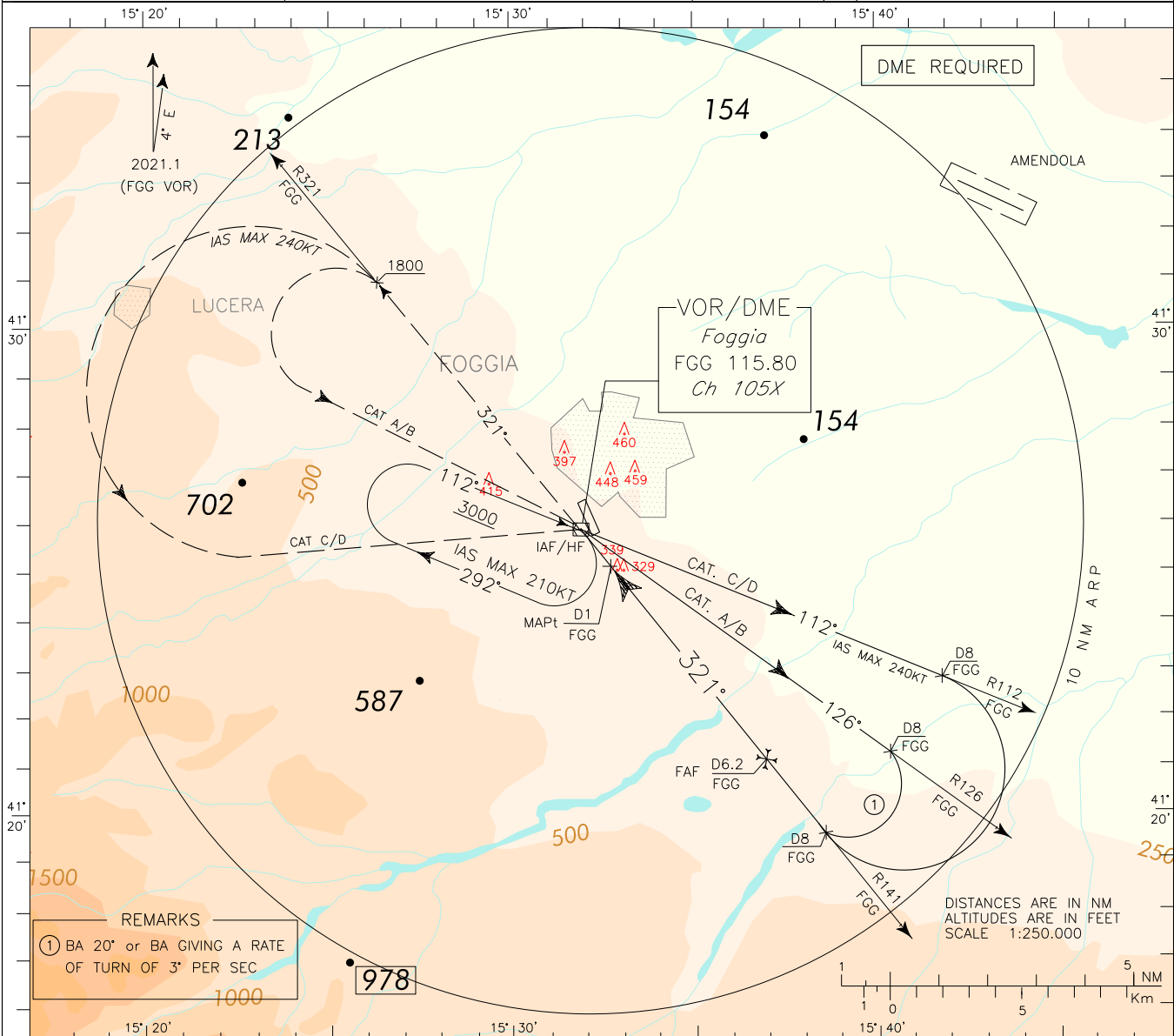
TRANSITION ALT 7000 ft
Bearings are magnetic. Elev and Alt in ft.

ICAO – INSTRUMENT APPROACH CHART

AD 2 LIBF 5-3

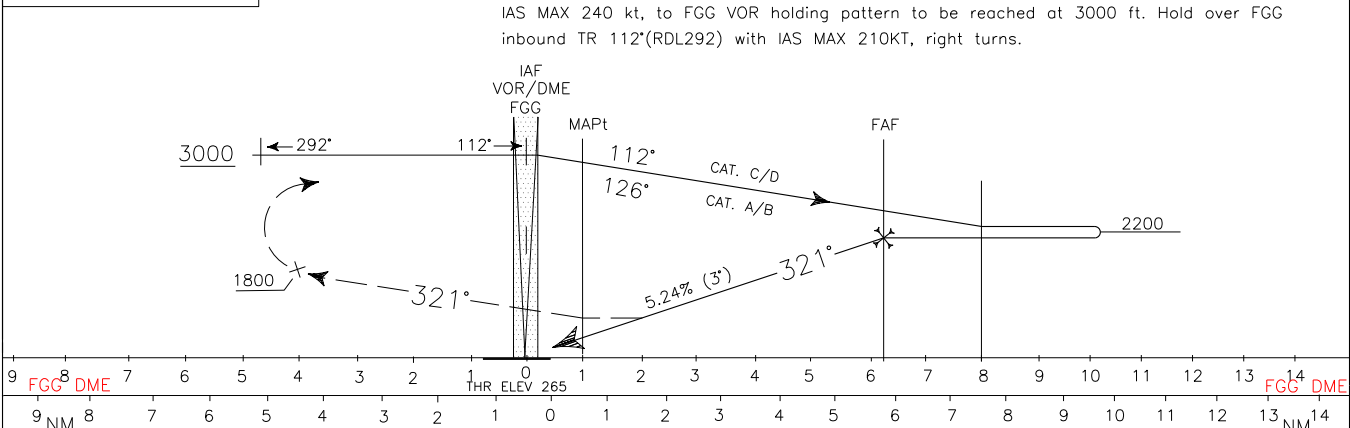
AMDT 8
 DOC. 8168 – ED. 6 – 2014
 CHANGE: UPDATED PROCEDURE

REMARK: FINAL APPROACH TRACK IS OFFSET 12° FROM RCL 153°. FINAL APPROACH TRACK INTERSECTS RCL EXTENSION 1762M BEFORE THR 33.	APP	Amendola APP/Radar	118.855	AD ELEV	267	LIBF	FOGGIA/GINO LISA
	AFIS	Foggia Aerodrome INFO	120.100				VOR



TRANSITION ALT 7000

MISSED APPROACH: At 1 NM FGG DME continue on TR 321° and climb to 3000 ft. Leaving 1800 ft turn left, with IAS MAX 240 kt, to FGG VOR holding pattern to be reached at 3000 ft. Hold over FGG inbound TR 112°(RDL292) with IAS MAX 210KT, right turns.



OCA (OCH)		A	B	C	D	CIRCLING SECTORS 	GS	FT per MIN	DIST FGG DME	ALT (HGT)	MNM SECT ALT FGG VOR
STRAIGHT IN APPROACH	S-VOR	880 (613)					80	420	6	2152 (1885)	
CIRCLING		880 (613)	1370 (1103)	1540 (1273)		100	530	5	1834 (1567)		
						120	630	4	1515 (1248)		
						140	740	3	1197 (930)		
						160	850	2	880 (613)		
						180	950				