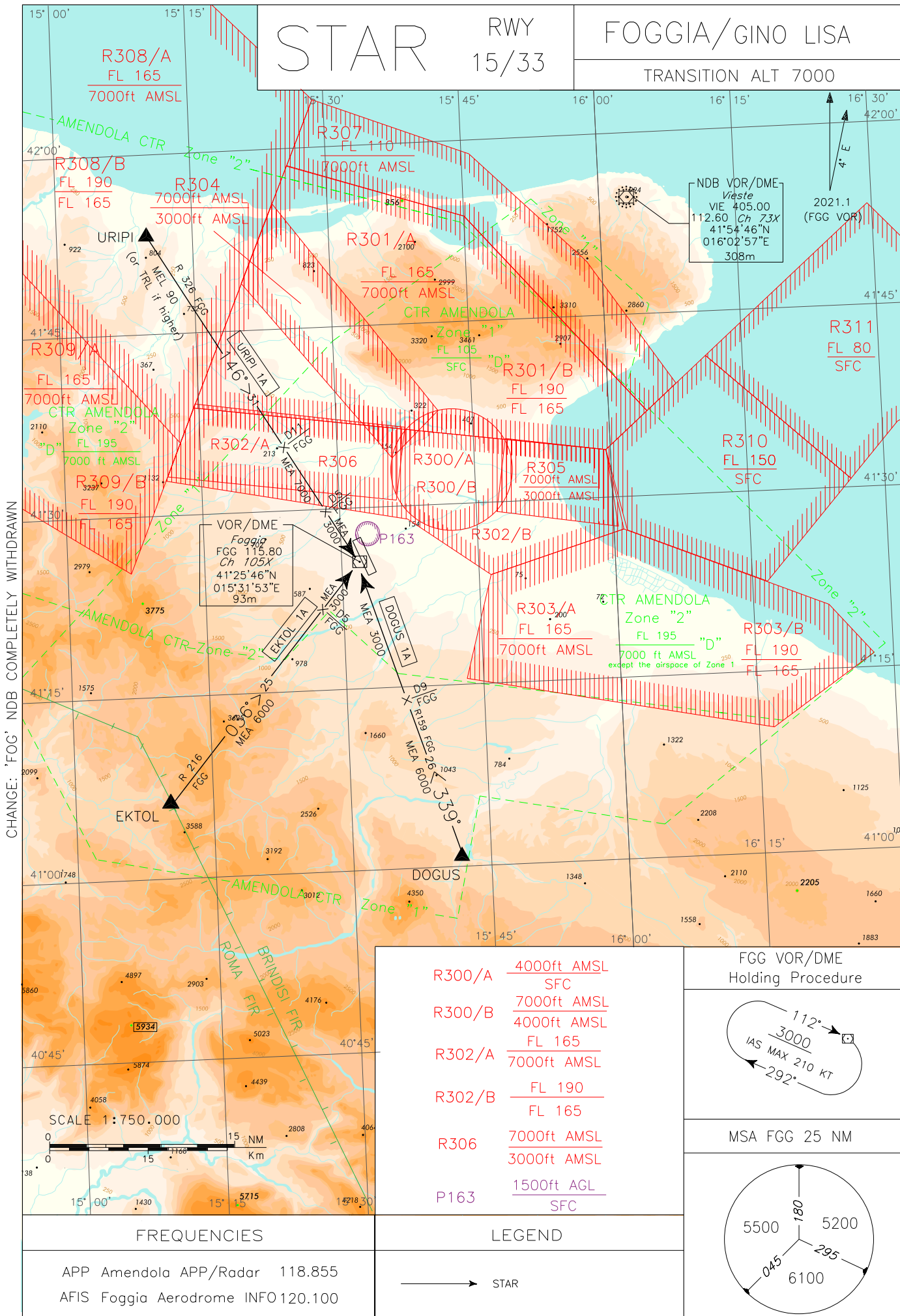


# STAR

RWY 15/33

FOGGIA/GINO LISA

TRANSITION ALT 7000



CHANGE: 'FOG' NDB COMPLETELY WITHDRAWN

**EKTOL 1A**

EKTOL – RDL 216 FGG VOR (TR 036°) per FGG VOR/DME.

MEA: EKTOL – RDL 216/5NM FGG VOR/DME: 6000 FT; RDL 216/5NM FGG VOR/DME – FGG VOR/DME: 3000 FT.

**DOGUS 1A**

DOGUS – RDL 159 FGG VOR (TR 339°) per FGG VOR/DME.

MEA: DOGUS – RDL 159/9NM FGG VOR/DME: 6000FT;  
RDL 159/9NM FGG VOR/DME – FGG VOR/DME: 3000 FT

**URIFI 1A**

URIFI – RDL 326 FGG VOR (TR 146°) per FGG VOR/DME.

MEA: URIFI – RDL 326/11 NM FGG VOR/DME: FL 90 o/or TRL se più alto/if higher;  
RDL 326/11 NM FGG VOR/DME – RDL 326/5 NM FGG VOR/DME: 7000 FT;  
RDL 326/5 NM FGG VOR/DME – FGG VOR/DME: 3000 FT.

**EKTOL 1A**

EKTOL – RDL 216 FGG VOR (TR 036°) bound to FGG VOR/DME.

**DOGUS 1A**

DOGUS – RDL 159 FGG VOR (TR 339°) bound to FGG VOR/DME.

**URIFI 1A**

URIFI – RDL 326 FGG VOR (TR 146°) bound to FGG VOR/DME.

Intenzionalmente bianca

*Intentionally left blank*