

FREQUENCIES	
TWR Bari TWR	118.300
APP Brindisi Radar	118.750 (133.025)
ATIS Bari ATIS Arrival and Departure Information	124.050

SID
RWY 07

BARI/PALESE
TRANSITION ALT 5000

REMARK

(1) Not available during activation periods of zone: LI R310

(2) SID partially outside controlled airspace

SCALE 1:750,000

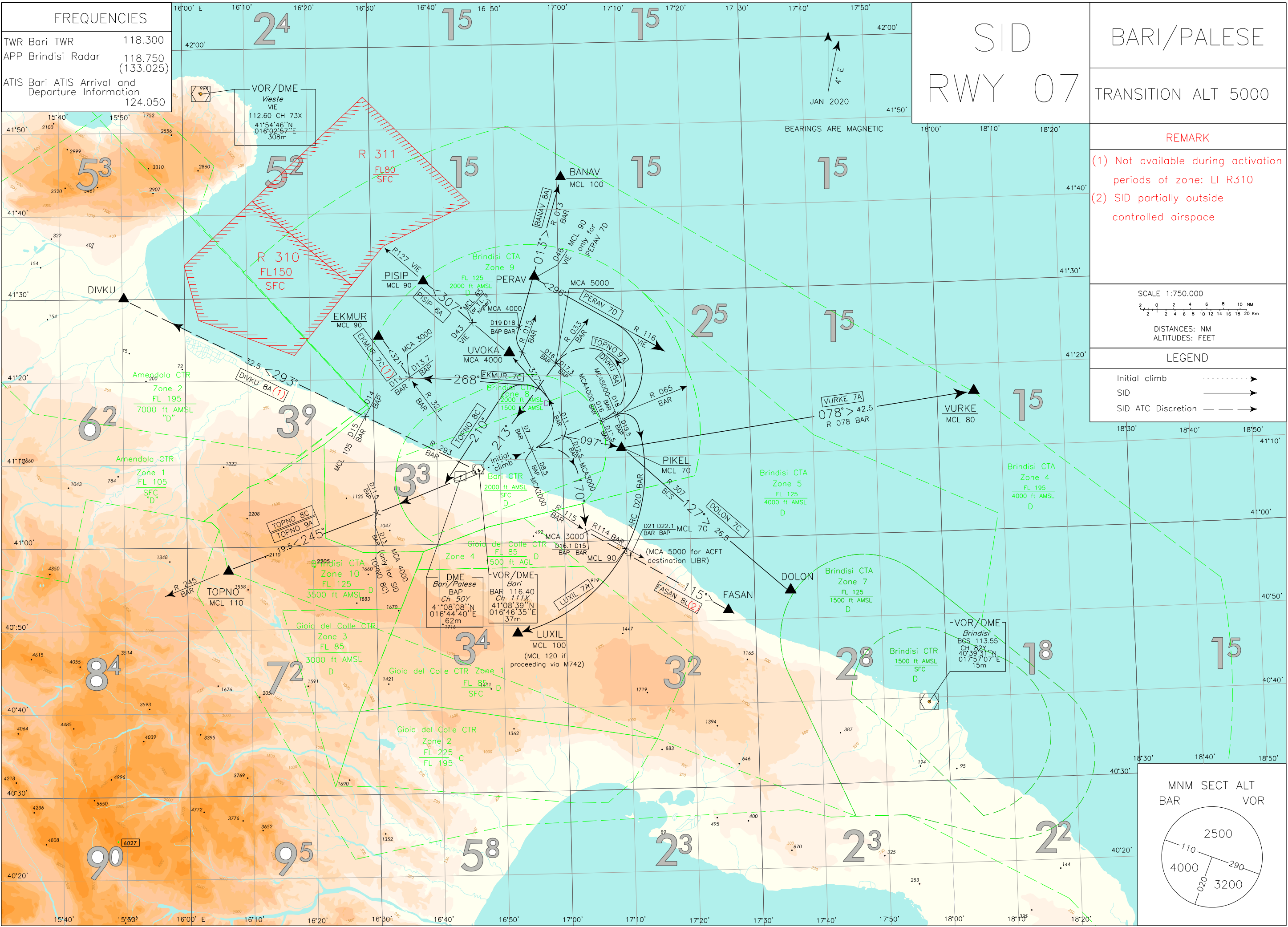
DISTANCES: NM
ALTITUDES: FEET

LEGEND

Initial climb>

SID ———>

SID ATC Discretion - - - ->



SID RWY 07**Initial climb procedure**

After take-off, proceed on RDL 065 BAR VOR (TR 065°). At 7 DME BAR (8.5 NM BAP DME), to be crossed at 2000 ft or above, join the assigned SID.

Turns after take off shall be performed according to the following parameters:

IAS MAX 250 kt for SID TOPNO 9A, TOPNO 8C, VURKE 7A, FASAN 8L, DOLON 7C, BANAV 8A, PISIP 6A and EKMUR 7C;

IAS MAX 240 kt for SID DIVKU 8A.

minimum climb gradient 300 ft/NM (4.93%) until leaving 3000 ft for SID TOPNO 9A, TOPNO 8C, DIVKU 8A, VURKE 7A, DOLON 7C, PISIP 6A and EKMUR 7C;

minimum climb gradient 300 ft/NM (4.93%) until leaving FL90 for SID LUXIL 7A, BANAV 8A and PERAV 7D.

SIDs DESCRIPTION

Initial climb procedure completed:

BANAV 8A

Turn left on TR 327°, crossing RDL 015 BAR VOR turn right to join RDL 013 BAR VOR bound to BANAV.

MCA/MCL: RDL 013/18NM BAR VOR/DME (19 NM BAP DME): 4000 FT; BANAV: FL100

DIVKU 8A (ATC discretion) (1)

Proceed on RDL 065 BAR VOR until 16NM BAR DME (or 17.5 NM BAP DME), then turn left on TR 213° (RDL 033 BAR VOR) bound to BAR VOR. Leave BAR VOR on RDL 293 BAR VOR bound to DIVKU.

MCA/MCL: RDL 065/7NM BAR VOR/DME (8.5 NM BAP DME): 2000FT; RDL 065/16NM BAR VOR/DME (17.5 NM BAP DME): 4000FT;
RDL 293/15NM BAR VOR/DME (14 NM BAP DME): FL105

(1) Not available during activation periods of zone LI R310

DOLON 7C

Proceed on RDL 065 BAR VOR until 11 NM BAR DME (12.5NM BAP DME), then turn right on TR 097° bound to PIKEL, then turn right until joining RDL 307 BCS VOR (TR 127°) bound to DOLON.

MCA/MCL: RDL 065/11NM BAR VOR/DME (12.5NM BAP DME): 3000 FT; PIKEL: FL70

EKMUR 7C (1)

Turn left on TR 268° until joining RDL 321 BAR VOR bound to EKMUR.

MCA/MCL: RDL321/14NM BAR VOR/DME (13.7 NM BAP DME): 3000 FT; EKMUR: FL 90

(1) Not available during activation periods of zone LI R310

FASAN 8L (ATC discretion)

Turn right on TR 170° until join and follow RDL 115 BAR VOR bound to FASAN.

Remark

SID partially outside controlled airspace

MCA/MCL: RDL 115/15NM BAR VOR/DME (16.1 NM BAP DME): 3000 FT;
RDL 115/21NM BAR VOR/DME (22.1 NM BAP DME): FL70 (for aircraft destination LIBR: 5000 FT)

LUXIL 7A

Proceed on RDL 065 BAR VOR until 18NM BAR DME, then turn right until joining ARC 20 NM BAR DME bound to LUXIL.

MCA/MCL: RDL 065/18NM BAR VOR/DME 5000FT; INT ARC 20 NM BAR DME/ RDL 114 BAR VOR FL90; LUXIL FL 100 (FL 120 if proceeding via M742)

PERAV 7D

Proceed on RDL 065 BAR VOR until 16NM BAR DME (17.5 NM BAP DME), then turn left to join and follow RDL 116 VIE VOR bound to PERAV.

MCA/MCL: RDL 065/16NM BAR VOR/DME (17.5 NM BAP DME): 4000 FT; PERAV: FL90

PISIP 6A

Turn left bound to UVOKA, until joining RDL 127 VIE VOR (TR 307°) bound to PISIP.

MCA/MCL: UVOKA: 4000 FT; RDL 127/43NM VIE VOR/DME: FL65 (or TRL if higher); PISIP: FL90

TOPNO 9A (ATC discretion)

Proceed on RDL 065 BAR VOR until 16NM BAR DME (17.5NM BAP DME), then turn left on TR 213° (RDL 033 BAR VOR) bound to BAR VOR. Leave BAR VOR on RDL 245 (TR 245°) bound to TOPNO.

MCA/MCL: RDL 065/16NM BAR VOR/DME (17.5 NM BAP DME): 4000FT; RDL 033/16NM BAR VOR/DME (17.3 NM BAP DME): 5000FT;
TOPNO: FL110

TOPNO 8C

Turn left on TR 210° until joining RDL 245 BAR VOR bound to TOPNO.

MCA/MCL: RDL 245/13NM BAR VOR/DME (11.5 NM BAP DME): 4000FT; TOPNO: FL110

VURKE 7A

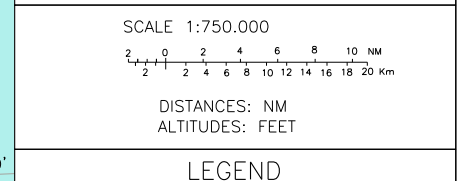
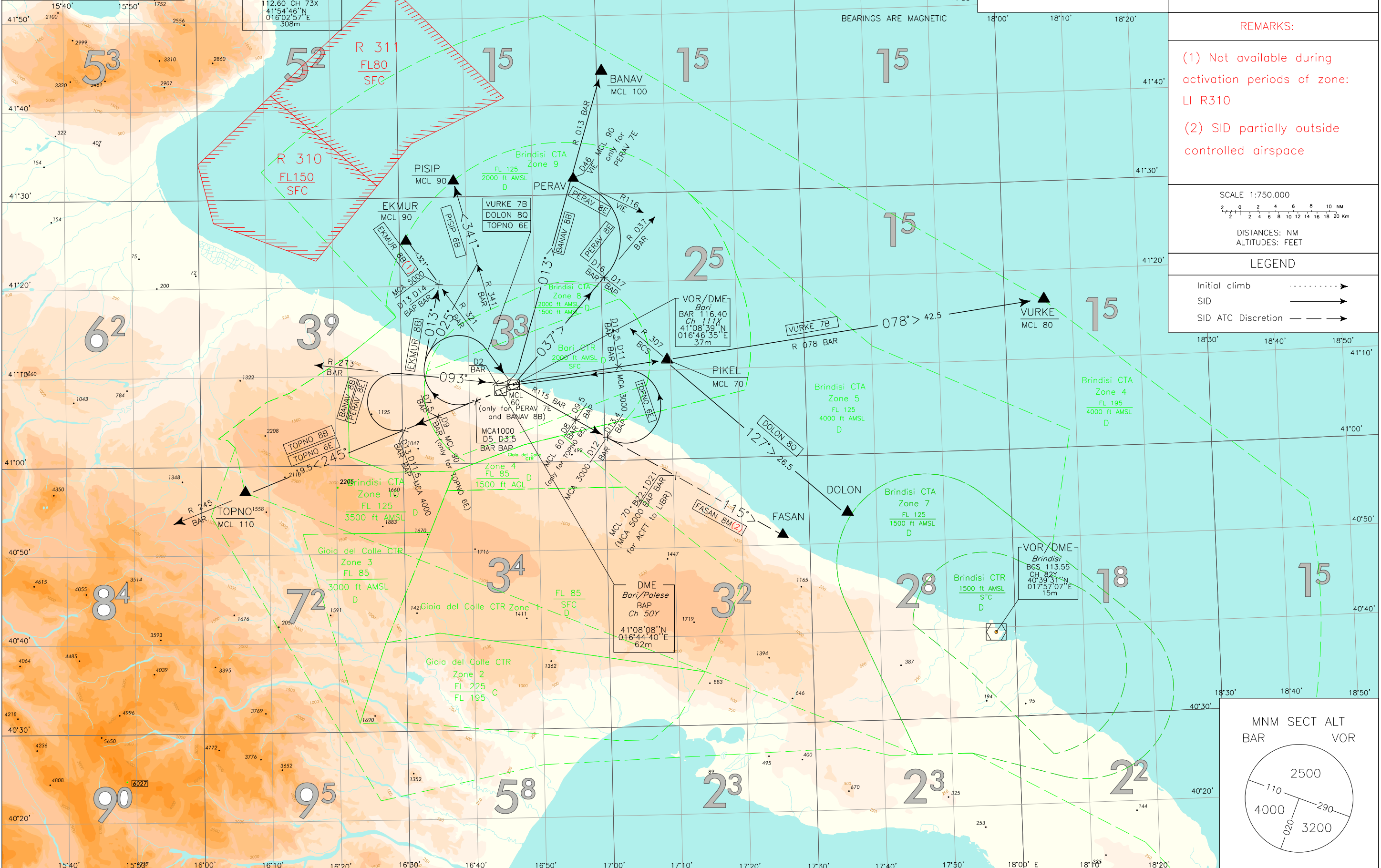
Proceed on RDL 065 BAR VOR until 11NM BAR DME (12.5NM BAP DME), then turn right on TR 097° bound to PIKEL, then turn left until joining RDL 078 BAR VOR (TR 078°) bound to VURKE.

MCA/MCL: RDL 065/11NM BAR VOR/DME (12.5 NM BAP DME): 3000FT; PIKEL: FL70; VURKE: FL80

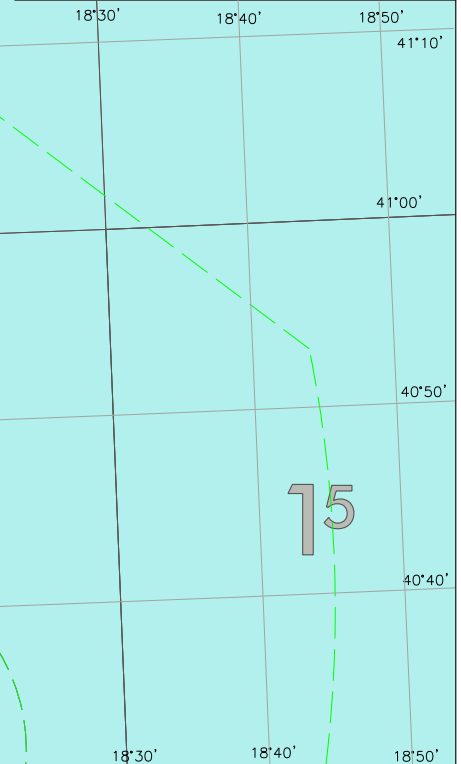
FREQUENCIES		
TWR	Bari TWR	118.300
APP	Brindisi Radar	118.750 (133.025)
ATIS	Bari ATIS Arrival and Departure Information	124.050

SID
RWY 25

BARI/PALESE
TRANSITION ALT 5000



LEGEND
Initial climb
SID ———
SID ATC Discretion - - -



CHANGE: BRINDISI CTA ZONE 10 and ZONE 4 LATERAL LIMITS MODIFIED

SID RWY 25**Initial climb procedure**

After take-off, proceed on RDL 245 BAR VOR (TR 245°). At 5 NM BAR DME (3.5 NM BAP DME), to cross at 1000FT or above join the assigned SID.

Turns after take off shall be performed according to the following parameters:

IAS MAX 250 KT;

Minimum climb gradient 300FT/NM (4.93%) until leaving 3000FT.

SIDs DESCRIPTION

Initial climb procedure completed:

BANAV 8B

Proceed on RDL245 BAR VOR until 13 NM BAR DME (11.5 NM BAP DME), then turn right to join RDL 273 (TR 093°) bound to BAR VOR. At 2 NM BAR DME turn left to join RDL 013 BAR VOR bound to BANAV.

Remark:

first turn after take off shall be performed according to the following parameters:

IAS MAX 220 KT;

minimum climb gradient 300FT/NM (4.93%) until leaving FL90.

MCA/MCL: RDL 245/13NM BAR VOR/DME (11.5 NM BAP DME): 4000FT; BAR VOR: FL60; BANAV: FL100

DOLON 8Q

Turn right to BAR VOR, then proceed on RDL 078 BAR VOR bound to PIKEL, then turn right until joining RDL 307 BCS VOR (TR 127°) bound to DOLON.

MCA/MCL: RDL 078/11NM BAR VOR/DME (12.5 NM BAP DME): 3000FT; PIKEL: FL70

EKMUR 8B (1)

Turn right on track 013° until join and follow RDL321 BAR VOR (RDL 141 VIE VOR) bound to EKMUR.

MCL: RDL321/14NM BAR VOR/DME(13 NM BAP DME): 5000FT; EKMUR: FL90

(1) Not available during activation periods of zone LI R310

FASAN 8M (ATC discretion)

Turn right to BAR VOR, then proceed on RDL 115 BAR VOR bound to FASAN.

MCA/MCL: RDL 115/12NM BAR VOR/DME (13.4 NM BAP DME): 3000FT; RDL 115/21NM BAR VOR/DME (22.1 NM BAP DME): FL70
(for aircraft destination LIBR: 5000 FT)

PERAV 8E

Proceed on RDL 245 BAR VOR until 13NM BAR DME (11.5 NM BAP DME), then turn right until join and follow RDL 273 BAR VOR (TR 093°) bound to BAR VOR. Leave BAR VOR on RDL 037 until 16NM BAR DME, then turn left until join and follow RDL 116 VIE VOR (TR 296°) bound to PERAV.

Remark:

first turn after take off shall be performed according to the following parameters:

IAS MAX 220 KT;

minimum climb gradient 300FT/NM (4.93%) until leaving FL90.

MCA/MCL: RDL 245/13NM BAR VOR/DME (11.5 NM BAP DME): 4000FT; BAR VOR: FL60; PERAV: FL90

PISIP 6B

Turn right on track 025° until joining RDL341 BAR VOR bound to PISIP.

Remark:

minimum climb gradient 300FT/NM (4.93%) until leaving FL90.

MCL: PISIP: FL 90

TOPNO 8B

Proceed on RDL 245 BAR VOR (TR 245°) bound to TOPNO.

MCA/MCL: RDL 245/13NM BAR VOR/DME (11.5 NM BAP DME): 4000FT; TOPNO: FL110

TOPNO 6E

Turn right bound to BAR VOR, then proceed on RDL 115 BAR VOR until 12NM BAR DME (13.4 NM BAP DME), then turn left bound to BAR VOR. Leave BAR VOR on RDL 245 BAR VOR bound to TOPNO.

REMARK

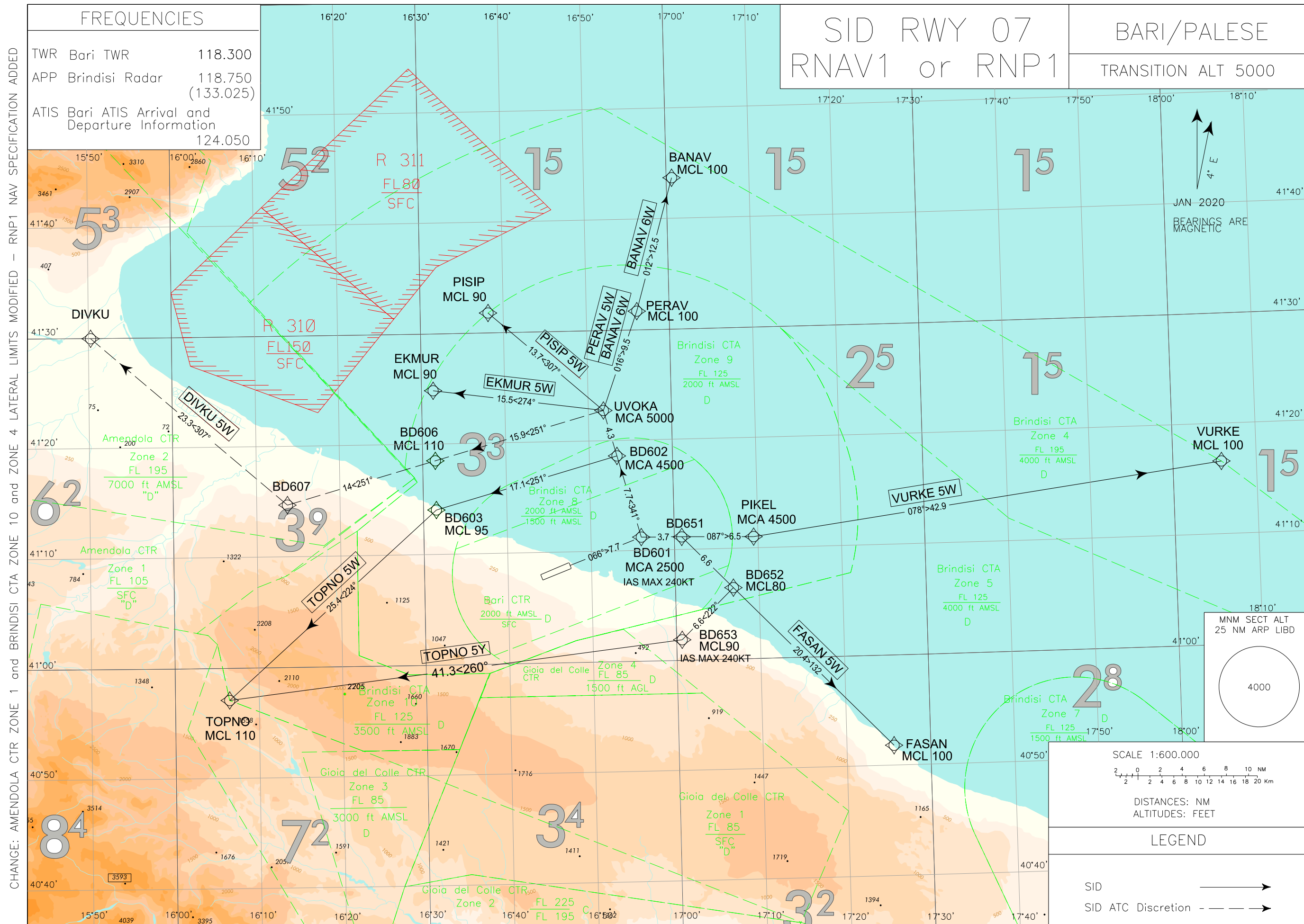
SID partially outside controlled airspace

MCL: RDL 115/8NM BAR VOR/DME (9.5 NM BAP DME): FL60; RDL 245/9NM BAR VOR/DME (7.5 NM BAP DME): FL90; TOPNO:
MCL110

VURKE 7B

Turn right to BAR VOR, then proceed on RDL 078 BAR VOR bound to PIKEL, then VURKE.

MCA/MCL: RDL 078/11NM BAR VOR/DME (12.5 NM BAP DME): 3000FT; PIKEL: FL70; VURKE: FL80



BARI / Palese
SID RNAV 1 or RNP1 RWY 07

REMARKS

- 1) For “monitoring and alerting” reasons, RNP1 specification is required in case of radar service unavailability or degradation;
- 2) Minimum Climb Gradient: 7.2% (365 FT/NM) for FASAN 5W and TOPNO 5Y only;
- 3) Minimum Climb Gradient: 6.0% (365 FT/NM) for all other SID.

BANAV 6W

Path Terminator	Waypoint Identifier	Fly Over	Course °M (°T)	Magnetic Variation	Distance (NM)	Turn Direction	Altitude (ft)	Speed Limit (kt)	Navigation Specification
CA	-	-	066 (069.5)	4 E	-	-	+508	-	RNAV1/RNP1 (1)
CF	BD601	-	066 (069.5)	4 E	-	-	+2500	240	RNAV1/RNP1 (1)
TF	BD602	-	341 (344.6)	-	7.7	-	+4500	-	RNAV1/RNP1 (1)
TF	UVOKA	-	341 (344.6)	-	4.3	-	+5000	-	RNAV1/RNP1 (1)
TF	PERAV	-	016 (019.8)	-	9.5	-	+ FL 100	-	RNAV1/RNP1 (1)
TF	BANAV	-	012 (015.9)	-	12.5	-	+ FL 100	-	RNAV1/RNP1 (1)

DIVKU 5W

Path Terminator	Waypoint Identifier	Fly Over	Course °M (°T)	Magnetic Variation	Distance (NM)	Turn Direction	Altitude (ft)	Speed Limit (kt)	Navigation Specification
CA	-	-	066 (069.5)	4 E	-	-	+508	-	RNAV1/RNP1 (1)
CF	BD601	-	066 (069.5)	4 E	-	-	+2500	240	RNAV1/RNP1 (1)
TF	BD602	-	341 (344.6)	-	7.7	-	+4500	-	RNAV1/RNP1 (1)
TF	UVOKA	-	341 (344.6)	-	4.3	-	+5000	-	RNAV1/RNP1 (1)
TF	BD606	-	251 (254.5)	-	15.9	L	+ FL 110	-	RNAV1/RNP1 (1)
TF	BD607	-	251 (254.5)	-	14.0	-	-	-	RNAV1/RNP1 (1)
TF	DIVKU	-	307 (311.1)	-	23.3	-	-	-	RNAV1/RNP1 (1)

EKMUR 5W

Path Terminator	Waypoint Identifier	Fly Over	Course °M (°T)	Magnetic Variation	Distance (NM)	Turn Direction	Altitude (ft)	Speed Limit (kt)	Navigation Specification
CA	-	-	066 (069.5)	4 E	-	-	+508	-	RNAV1/RNP1 (1)
CF	BD601	-	066 (069.5)	4 E	-	-	+2500	240	RNAV1/RNP1 (1)
TF	BD602	-	341 (344.6)	-	7.7	-	+4500	-	RNAV1/RNP1 (1)
TF	UVOKA	-	341 (344.6)	-	4.3	-	+5000	-	RNAV1/RNP1 (1)
TF	EKMUR	-	274 (277.8)	-	15.5	-	+ FL 90	-	RNAV1/RNP1 (1)

FASAN 5W

Path Terminator	Waypoint Identifier	Fly Over	Course °M (°T)	Magnetic Variation	Distance (NM)	Turn Direction	Altitude (ft)	Speed Limit (kt)	Navigation Specification
CA	-	-	066 (069.5)	4 E	-	-	+508	-	RNAV1/RNP1 (1)
CF	BD601	-	066 (069.5)	4 E	-	-	+2500	240	RNAV1/RNP1 (1)
TF	BD651	-	087 (091.0)	-	3.7	-	-	-	RNAV1/RNP1 (1)
TF	BD652	-	132 (135.8)	-	6.6	-	+FL 80	-	RNAV1/RNP1 (1)
TF	FASAN	-	132 (135.8)	-	20.4	-	+ FL 100	-	RNAV1/RNP1 (1)

PERAV 5W

Path Terminator	Waypoint Identifier	Fly Over	Course °M (°T)	Magnetic Variation	Distance (NM)	Turn Direction	Altitude (ft)	Speed Limit (kt)	Navigation Specification
CA	-	-	066 (069.5)	4 E	-	-	+508	-	RNAV1/RNP1 (1)
CF	BD601	-	066 (069.5)	4 E	-	-	+2500	240	RNAV1/RNP1 (1)
TF	BD602	-	341 (344.6)	-	7.7	-	+4500	-	RNAV1/RNP1 (1)
TF	UVOKA	-	341 (344.6)	-	4.3	-	+5000	-	RNAV1/RNP1 (1)
TF	PERAV	-	016 (019.8)	-	9.5	-	+FL 100	-	RNAV1/RNP1 (1)

PISIP 5W

Path Terminator	Waypoint Identifier	Fly Over	Course °M (°T)	Magnetic Variation	Distance (NM)	Turn Direction	Altitude (ft)	Speed Limit (kt)	Navigation Specification
CA	-	-	066 (069.5)	4 E	-	-	+508	-	RNAV1/RNP1 (1)
CF	BD601	-	066 (069.5)	4 E	-	-	+2500	240	RNAV1/RNP1 (1)
TF	BD602	-	341 (344.6)	-	7.7	-	+4500	-	RNAV1/RNP1 (1)
TF	UVOKA	-	341 (344.6)	-	4.3	-	+5000	-	RNAV1/RNP1 (1)
TF	PISIP	-	307 (311.4)	-	13.7	-	+FL 90	-	RNAV1/RNP1 (1)

TOPNO 5W

Path Terminator	Waypoint Identifier	Fly Over	Course °M (°T)	Magnetic Variation	Distance (NM)	Turn Direction	Altitude (ft)	Speed Limit (kt)	Navigation Specification
CA	-	-	066 (069.5)	4 E	-	-	+508	-	RNAV1/RNP1 (1)
CF	BD601	-	066 (069.5)	4 E	-	-	+2500	240	RNAV1/RNP1 (1)
TF	BD602	-	341 (344.6)	-	7.7	-	+4500	-	RNAV1/RNP1 (1)
TF	BD603	-	251 (254.6)	-	17.1	-	+FL 95	-	RNAV1/RNP1 (1)
TF	TOPNO	-	224 (228.3)	-	25.4	-	+ FL 110	-	RNAV1/RNP1 (1)

TOPNO 5Y

Path Terminator	Waypoint Identifier	Fly Over	Course °M (°T)	Magnetic Variation	Distance (NM)	Turn Direction	Altitude (ft)	Speed Limit (kt)	Navigation Specification
CA	-	-	066 (069.5)	4 E	-	-	+508	-	RNAV1/RNP1 (1)
CF	BD601	-	066 (069.5)	4 E	-	-	+2500	240	RNAV1/RNP1 (1)
TF	BD651	-	087 (091.0)	-	3.7	-	-	-	RNAV1/RNP1 (1)
TF	BD652	-	132 (135.8)	-	6.6	R	+FL 80	-	RNAV1/RNP1 (1)
TF	BD653	-	222 (225.8)	-	6.6	-	+FL 90	240	RNAV1/RNP1 (1)
TF	TOPNO	-	260 (263.7)	-	41.3	-	+ FL 110	-	RNAV1/RNP1 (1)

VURKE 5W

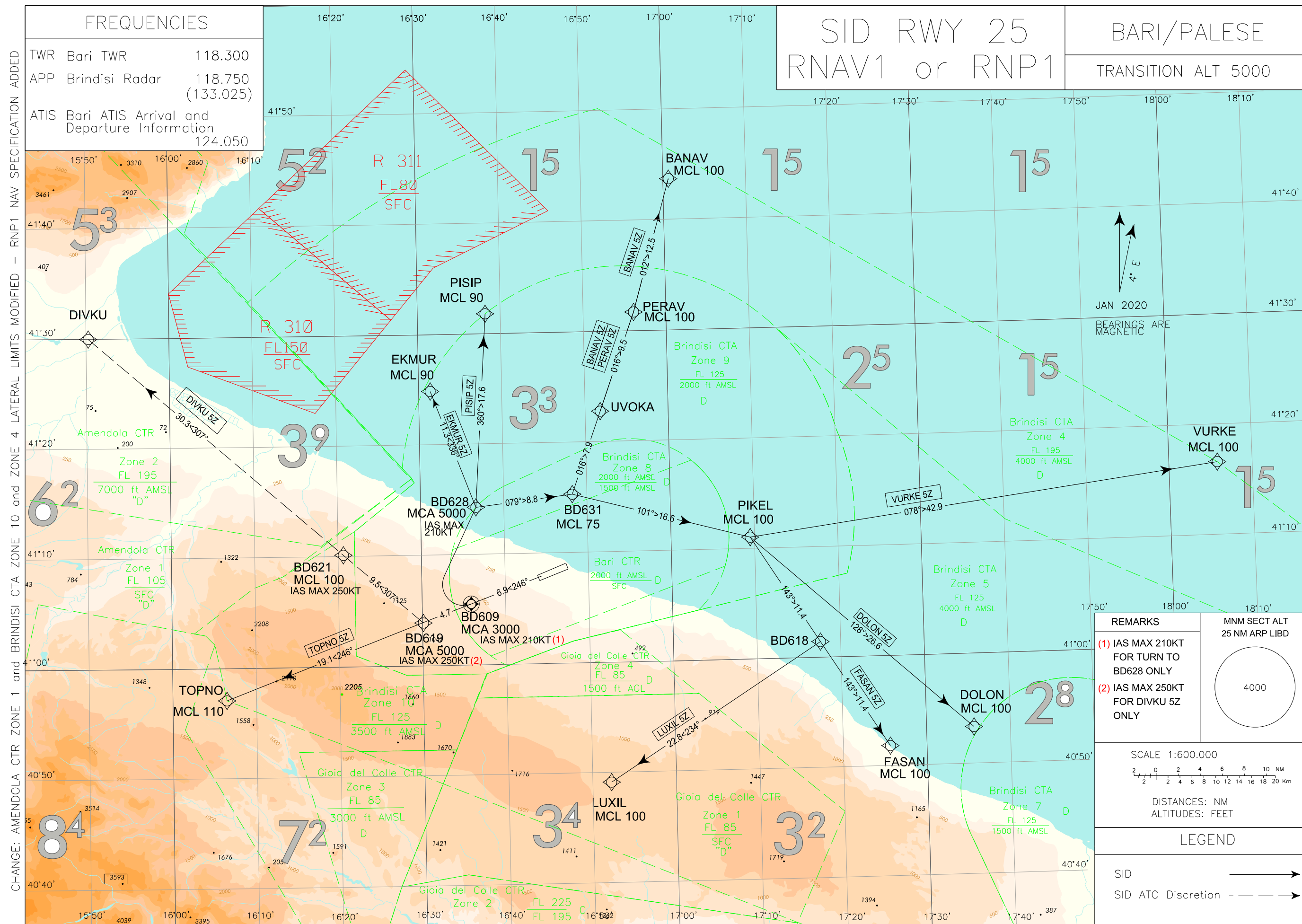
Path Terminator	Waypoint Identifier	Fly Over	Course °M (°T)	Magnetic Variation	Distance (NM)	Turn Direction	Altitude (ft)	Speed Limit (kt)	Navigation Specification
CA	-	-	066 (069.5)	4 E	-	-	+508	-	RNAV1/RNP1 (1)
CF	BD601	-	066 (069.5)	4 E	-	-	+2500	240	RNAV1/RNP1 (1)
TF	BD651	-	087 (091.1)	-	3.7	-	-	-	RNAV1/RNP1 (1)
TF	PIKEL	-	087 (091.1)	-	6.5	-	+4500	-	RNAV1/RNP1 (1)
TF	VURKE	-	078 (082.2)	-	42.9	-	+FL 100	-	RNAV1/RNP1 (1)

WAYPOINT LIST

Waypoint Identifier	Coordinates
BD601	41° 11' 14.69"N 016° 56' 02.29" E
BD602	41° 18' 38.56"N 016° 53' 20.06" E
BD603	41° 14' 04.02"N 016° 31' 32.74" E
BD606	41° 18' 31.41"N 016° 31' 31.14" E
BD607	41° 14' 43.42"N 016° 13' 41.17" E
BD651	41° 11' 10.74"N 017° 00' 52.96" E
BD652	41° 06' 28.77"N 017° 06' 55.50" E
BD653	41° 01' 52.07"N 017° 00' 39.36" E

Intenzionalmente bianca

Intentionally left blank



CHANGE: AMENDOLA CTR ZONE 1 and BRINDISI CTA ZONE 10 and ZONE 4 LATERAL LIMITS MODIFIED - RNP1 NAV SPECIFICATION ADDED

BARI / Palese
SID RNAV 1 or RNP1 RWY 25

REMARKS

- 1) For “monitoring and alerting” reasons, RNP1 specification is required in case of radar service unavailability or degradation;
- 2) Minimum Climb Gradient: 7.7% (470 FT/NM) for DIVKU 5Z and TOPNO 5Z only;
- 3) Minimum Climb Gradient: 7.0% (425 FT/NM) until reaching 5000ft for all other SID.

BANAV 5Z

Path Terminator	Waypoint Identifier	Fly Over	Course °M (°T)	Magnetic Variation	Distance (NM)	Turn Direction	Altitude (ft)	Speed Limit (kt)	Navigation Specification
CA	-	-	246 (249.5)	4 E	-	-	+594	-	RNAV1/RNP1 (1)
CF	BD609	Y	246 (249.5)	4 E	-	-	+3000	210	RNAV1/RNP1 (1)
DF	BD628	-	-	4 E	-	R	+5000	210	RNAV1/RNP1 (1)
TF	BD631	-	079 (083.3)	-	8.8	-	+ FL 75	-	RNAV1/RNP1 (1)
TF	UVOKA	-	016 (019.8)	-	7.9	-	-	-	RNAV1/RNP1 (1)
TF	PERAV	-	016 (019.8)	-	9.5	-	+ FL 100	-	RNAV1/RNP1 (1)
TF	BANAV	-	012 (015.9)	-	12.5	-	+ FL 100	-	RNAV1/RNP1 (1)

DIVKU 5Z

Path Terminator	Waypoint Identifier	Fly Over	Course °M (°T)	Magnetic Variation	Distance (NM)	Turn Direction	Altitude (ft)	Speed Limit (kt)	Navigation Specification
CA	-	-	246 (249.5)	4 E	-	-	+594	-	RNAV1/RNP1 (1)
CF	BD609	Y	246 (249.5)	4 E	-	-	+3000	210	RNAV1/RNP1 (1)
TF	BD619	-	246 (249.5)	-	4.7	-	+5000	250	RNAV1/RNP1 (1)
TF	BD621	-	307 (311.2)	-	9.5	-	+FL 100	250	RNAV1/RNP1 (1)
TF	DIVKU	-	307 (311.2)	-	30.3	-	-	-	RNAV1/RNP1 (1)

DOLON 5Z

Path Terminator	Waypoint Identifier	Fly Over	Course °M (°T)	Magnetic Variation	Distance (NM)	Turn Direction	Altitude (ft)	Speed Limit (kt)	Navigation Specification
CA	-	-	246 (249.5)	4 E	-	-	+594	-	RNAV1/RNP1 (1)
CF	BD609	Y	246 (249.5)	4 E	-	-	+3000	210	RNAV1/RNP1 (1)
DF	BD628	-	-	4 E	-	R	+5000	210	RNAV1/RNP1 (1)
TF	BD631	-	079 (083.3)	-	8.8	-	+ FL 75	-	RNAV1/RNP1 (1)
TF	PIKEL	-	101 (104.8)	-	16.6	-	+FL 100	-	RNAV1/RNP1 (1)
TF	DOLON	-	128 (131.6)	-	26.6	-	+FL 100	-	RNAV1/RNP1 (1)

EKMUR 5Z

Path Terminator	Waypoint Identifier	Fly Over	Course °M (°T)	Magnetic Variation	Distance (NM)	Turn Direction	Altitude (ft)	Speed Limit (kt)	Navigation Specification
CA	-	-	246 (249.5)	4 E	-	-	+594	-	RNAV1/RNP1 (1)
CF	BD609	Y	246 (249.5)	4 E	-	-	+3000	210	RNAV1/RNP1 (1)
DF	BD628	-	-	4 E	-	R	+5000	210	RNAV1/RNP1 (1)
TF	EKMUR	-	336 (339.5)	-	11.3	-	+ FL 90	-	RNAV1/RNP1 (1)

FASAN 5Z

Path Terminator	Waypoint Identifier	Fly Over	Course °M (°T)	Magnetic Variation	Distance (NM)	Turn Direction	Altitude (ft)	Speed Limit (kt)	Navigation Specification
CA	-	-	246 (249.5)	4 E	-	-	+594	-	RNAV1/RNP1 (1)
CF	BD609	Y	246 (249.5)	4 E	-	-	+3000	210	RNAV1/RNP1 (1)
DF	BD628	-	-	4 E	-	R	+5000	210	RNAV1/RNP1 (1)
TF	BD631	-	079 (083.3)	-	8.8	-	+ FL 75	-	RNAV1/RNP1 (1)
TF	PIKEL	-	101 (104.8)	-	16.6	-	+FL 100	-	RNAV1/RNP1 (1)
TF	BD618	-	143 (147.5)	-	11.4	-	-	-	RNAV1/RNP1 (1)
TF	FASAN	-	143 (147.5)	-	11.4	-	+FL 100	-	RNAV1/RNP1 (1)

LUXIL 5Z

Path Terminator	Waypoint Identifier	Fly Over	Course °M (°T)	Magnetic Variation	Distance (NM)	Turn Direction	Altitude (ft)	Speed Limit (kt)	Navigation Specification
CA	-	-	246 (249.5)	4 E	-	-	+594	-	RNAV1/RNP1 (1)
CF	BD609	Y	246 (249.5)	4 E	-	-	+3000	210	RNAV1/RNP1 (1)
DF	BD628	-	-	4 E	-	R	+5000	210	RNAV1/RNP1 (1)
TF	BD631	-	079 (083.3)	-	8.8	-	+ FL 75	-	RNAV1/RNP1 (1)
TF	PIKEL	-	101 (104.8)	-	16.6	-	+FL 100	-	RNAV1/RNP1 (1)
TF	BD618	-	143 (147.5)	-	11.4	-	-	-	RNAV1/RNP1 (1)
TF	LUXIL	-	234 (237.6)	-	22.8	R	+FL 100	-	RNAV1/RNP1 (1)

PERAV 5Z

Path Terminator	Waypoint Identifier	Fly Over	Course °M (°T)	Magnetic Variation	Distance (NM)	Turn Direction	Altitude (ft)	Speed Limit (kt)	Navigation Specification
CA	-	-	246 (249.5)	4 E	-	-	+594	-	RNAV1/RNP1 (1)
CF	BD609	Y	246 (249.5)	4 E	-	-	+3000	210	RNAV1/RNP1 (1)
DF	BD628	-	-	4 E	-	R	+5000	210	RNAV1/RNP1 (1)
TF	BD631	-	079 (083.3)	-	8.8	-	+ FL 75	-	RNAV1/RNP1 (1)
TF	UVOKA	-	016 (019.8)	-	7.9	-	-	-	RNAV1/RNP1 (1)
TF	PERAV	-	016 (019.8)	-	9.5	-	+ FL 100	-	RNAV1/RNP1 (1)

PISIP 5Z

Path Terminator	Waypoint Identifier	Fly Over	Course °M (°T)	Magnetic Variation	Distance (NM)	Turn Direction	Altitude (ft)	Speed Limit (kt)	Navigation Specification
CA	-	-	246 (249.5)	4 E	-	-	+594	-	RNAV1/RNP1 (1)
CF	BD609	Y	246 (249.5)	4 E	-	-	+3000	210	RNAV1/RNP1 (1)
DF	BD628	-	-	4 E	-	R	+5000	210	RNAV1/RNP1 (1)
TF	PISIP	-	360 (003.8)	-	17.6	-	+FL 90	-	RNAV1/RNP1 (1)

TOPNO 5Z

Path Terminator	Waypoint Identifier	Fly Over	Course °M (°T)	Magnetic Variation	Distance (NM)	Turn Direction	Altitude (ft)	Speed Limit (kt)	Navigation Specification
CA	-	-	246 (249.5)	4 E	-	-	+594	-	RNAV1/RNP1 (1)
CF	BD609	Y	246 (249.5)	4 E	-	-	+3000	-	RNAV1/RNP1 (1)
TF	BD619	-	246 (249.5)	-	4.7	-	+5000	-	RNAV1/RNP1 (1)
TF	TOPNO	-	246 (249.5)	-	19.1	-	+ FL 110	-	RNAV1/RNP1 (1)

VURKE 5Z

Path Terminator	Waypoint Identifier	Fly Over	Course °M (°T)	Magnetic Variation	Distance (NM)	Turn Direction	Altitude (ft)	Speed Limit (kt)	Navigation Specification
CA	-	-	246 (249.5)	4 E	-	-	+594	-	RNAV1/RNP1 (1)
CF	BD609	Y	246 (249.5)	4 E	-	-	+3000	210	RNAV1/RNP1 (1)
DF	BD628	-	-	4 E	-	R	+5000	210	RNAV1/RNP1 (1)
TF	BD631	-	079 (083.3)	-	8.8	-	+ FL 75	-	RNAV1/RNP1 (1)
TF	PIKEL	-	101 (104.8)	-	16.6	-	+FL 100	-	RNAV1/RNP1 (1)
TF	VURKE	-	078 (082.3)	-	42.9	-	+FL 100	-	RNAV1/RNP1 (1)

WAYPOINT LIST

Waypoint Identifier	Coordinates
BD609	41° 05' 32.51"N 016° 35' 52.93" E
BD619	41° 03' 53.66"N 016° 30' 06.55" E
BD621	41° 10' 08.99"N 016° 20' 38.43" E
BD618	41° 01' 25.86"N 017° 17' 35.48" E
BD628	41° 14' 17.47"N 016° 36' 38.64" E
BD631	41° 15' 18.94"N 016° 48' 15.01" E

Intenzionalmente bianca

Intentionally left blank