

ICAO - VISUAL APPROACH CHART

AD 2 LIBD 5-1

SCALE 1:250.000



FIS Brindisi Information N of 41° 125.100
 Brindisi Information S of 41° 131.125
 APP Brindisi Radar 118.750 (133.025)
 TWR Bari TWR 118.300
 ATIS Bari ATIS Arrival and Departure Information 124.050

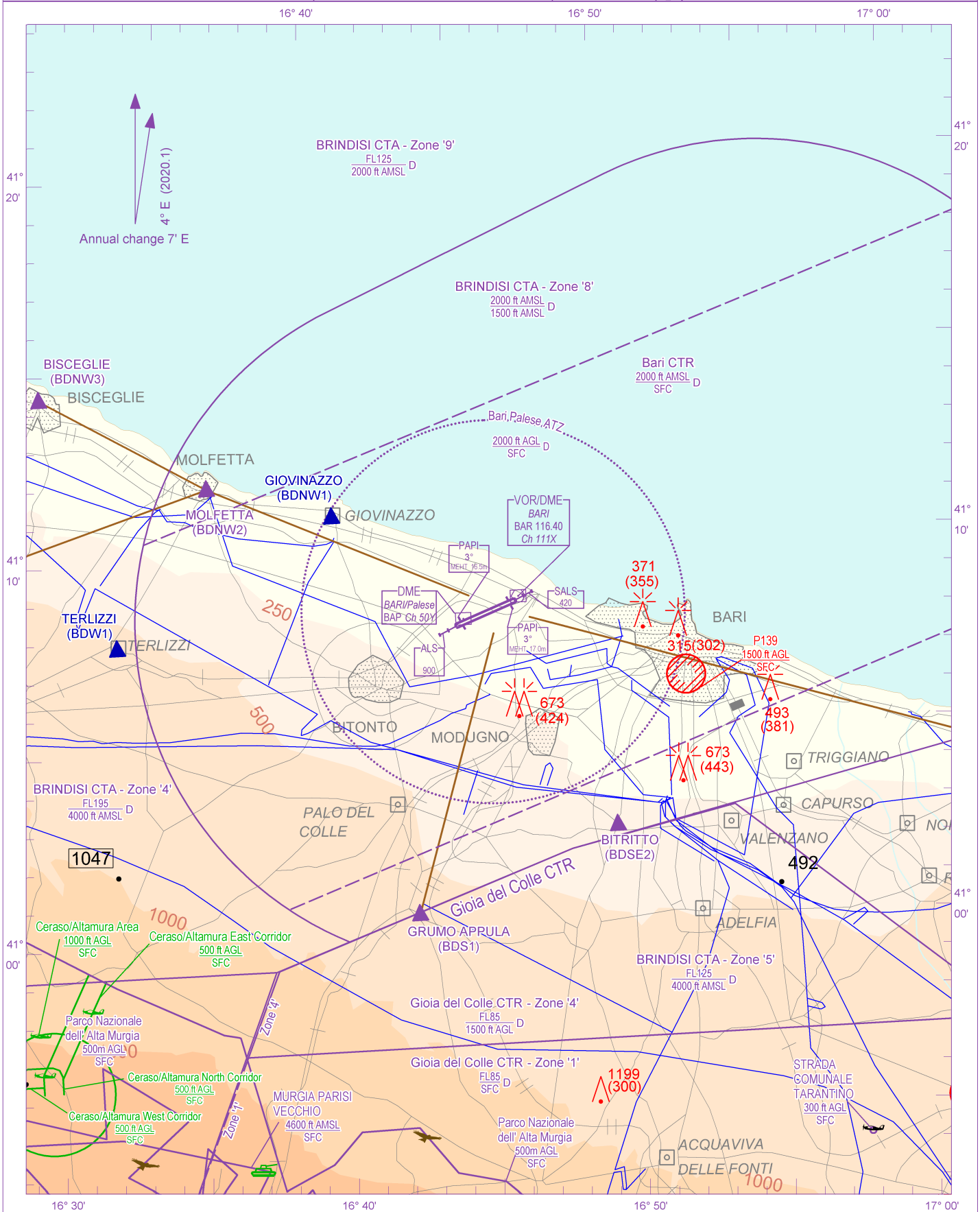
AD ELEV

193

L
I
B
D

BARI/PALESE

CHANGE: 'BPL' L COMPLETELY WITHDRAWN



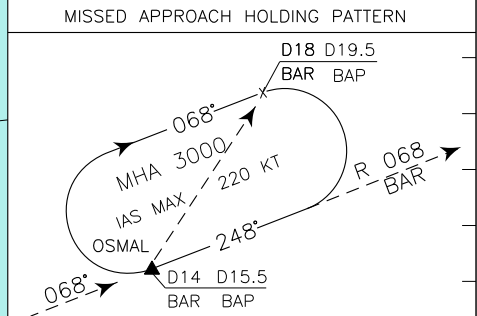
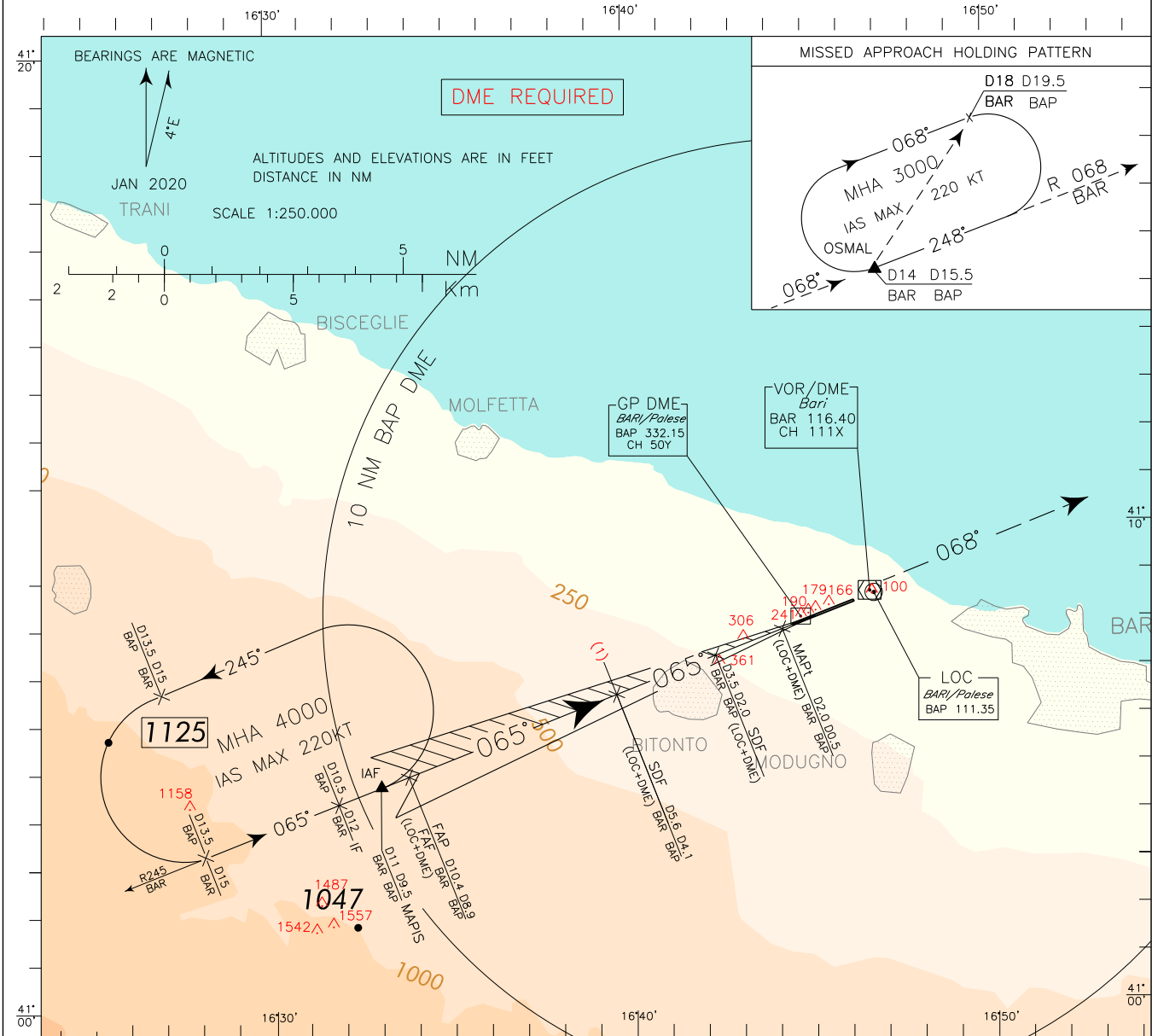
AIRSPACE CLASSIFICATION See AIP ENR 1.4	REMARK	WARNING
TRANSITION ALT 5000 FT		
ELEV AND ALT IN FT IF NOT OTHERWISE INDICATED		

ICAO – INSTRUMENT APPROACH CHART

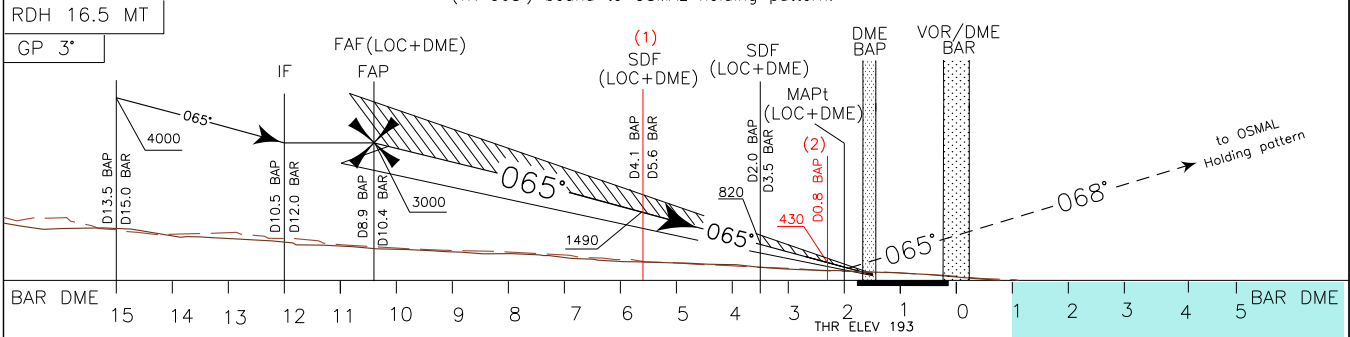
AD2 LIBD 5-3


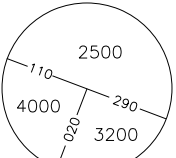
2014 AMDT 8
DOC 8168 ED 6 -
CHANGE: OM DISMISSED - CHART REVISED

REMARKS: (1) OM replaced by 4.1 NM BAP DME (5.6 NM BAR DME) (2) MM replaced by 0.8 NM BAP DME	APP	Brindisi Radar	118.750 (133.025)	AD ELEV	LIBD	BARI/ PAESE ILS or LOC Z RWY 07
	TWR	Bari TWR	118.300	193		
	ATIS	Bari ATIS Arrival and Departure Information	124.050			



TRANSITION ALT 5000 MISSED APPROACH: Continue on TR 065°, climbing to 3000 ft, until intercepting and following RDL 068° BAR VOR (TR 068°) bound to OSMAL holding pattern.



BAP DME		15	14	13	12	11	10	9	8	7	6	5	4	3	2	1	0.5	0	1	2	3	4	5	6	BAP DME
OCA (OCH)		A	B	C	D	CIRCLING SECTOR (* REMARK: IAS MAX 195 KT 	FT PER MIN	GS	D4.1-00.8 3.3 NM	D0.8-THR 0.6 NM	B D A M P E	ALT (HGT)	MNM SECT ALT BAR	VOR											
STRAIGHT IN APPROACH	ILS	393(200)	393(200)	393(200)	403(210)		425	80	2 : 29	0 : 27	5	1770(1577)													
	LOC+DME	620 (427)					531	100	1 : 59	0 : 22	4	1450(1257)													
		NORTH OF RWY ONLY					637	120	1 : 39	0 : 18	3	1130(937)													
CIRCLING (*)		850(657)	950(757)	1090(897)		743	140	1 : 25	0 : 15	2	820(627)														
						849	160	1 : 14	0 : 14	1	500(307)														

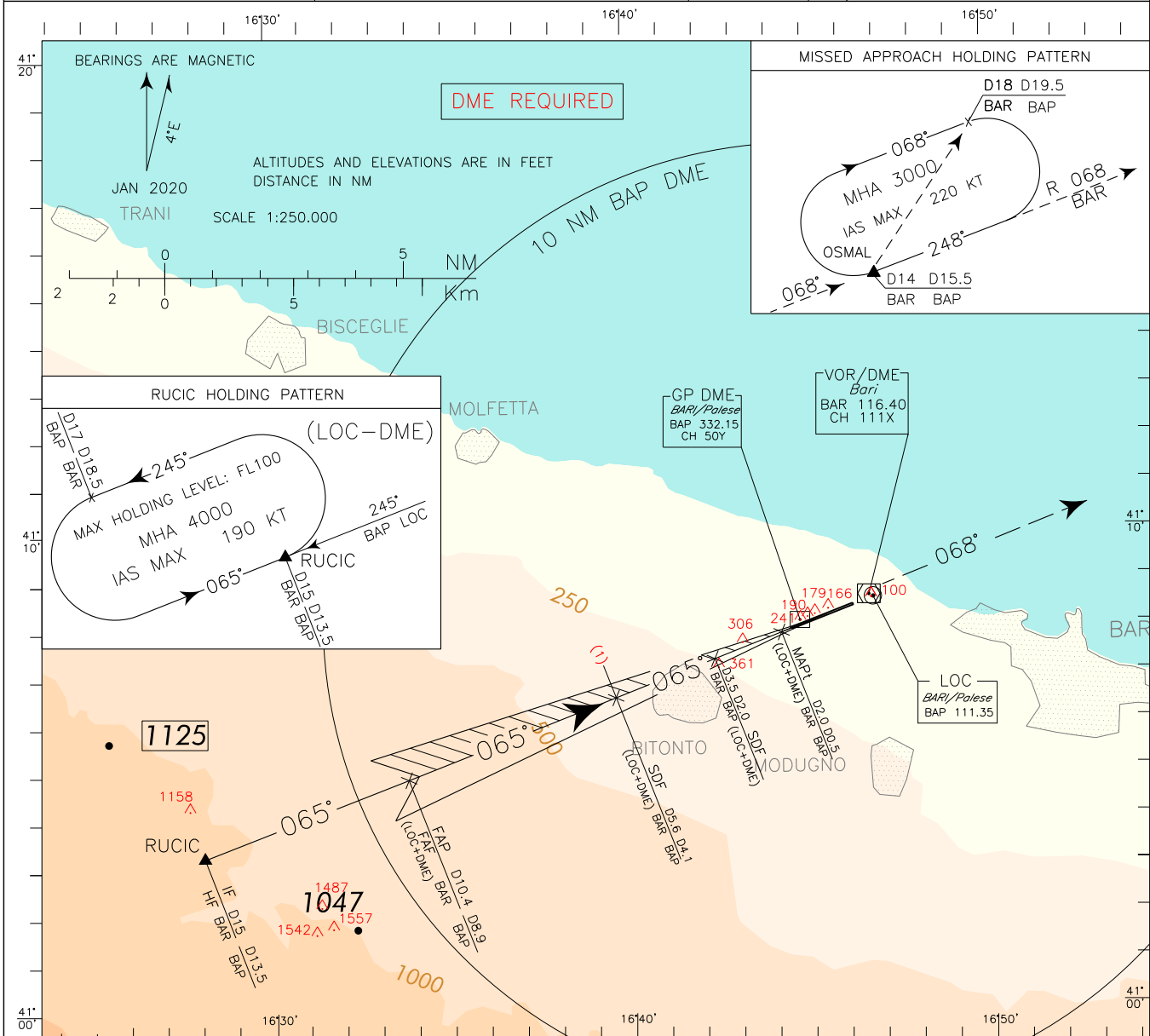
ICAO – INSTRUMENT APPROACH CHART

AD2 LIBD 5-7

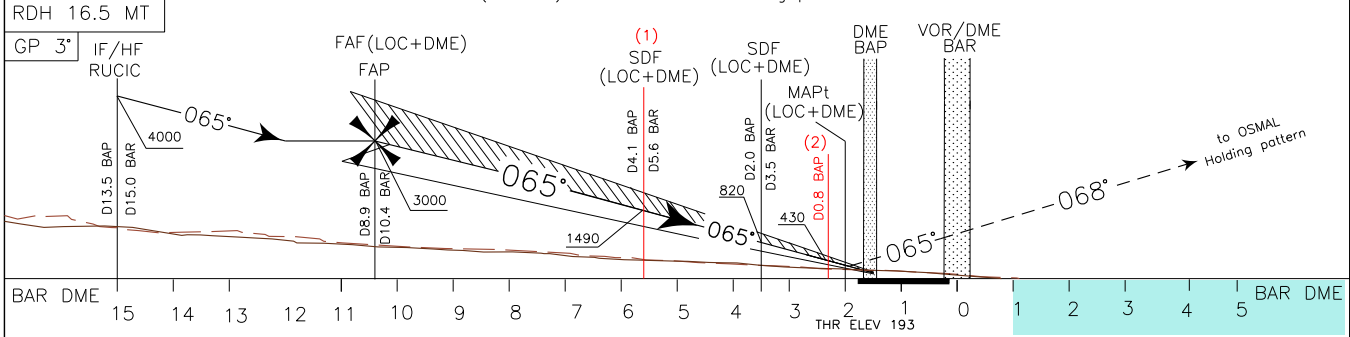
DOC 8168 ED 7 - 2020


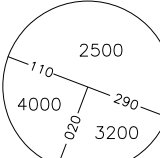
NEW CHART

REMARKS: (1) OM replaced by 4.1 NM BAP DME (5.6 NM BAR DME) (2) MM replaced by 0.8 NM BAP DME	APP Brindisi Radar 118.750 (133.025)	AD ELEV	LIBD	BARI/ PAESE ILS or LOC X RWY 07
	TWR Bari TWR 118.300	193		
	ATIS Bari ATIS Arrival and Departure Information 124.050			



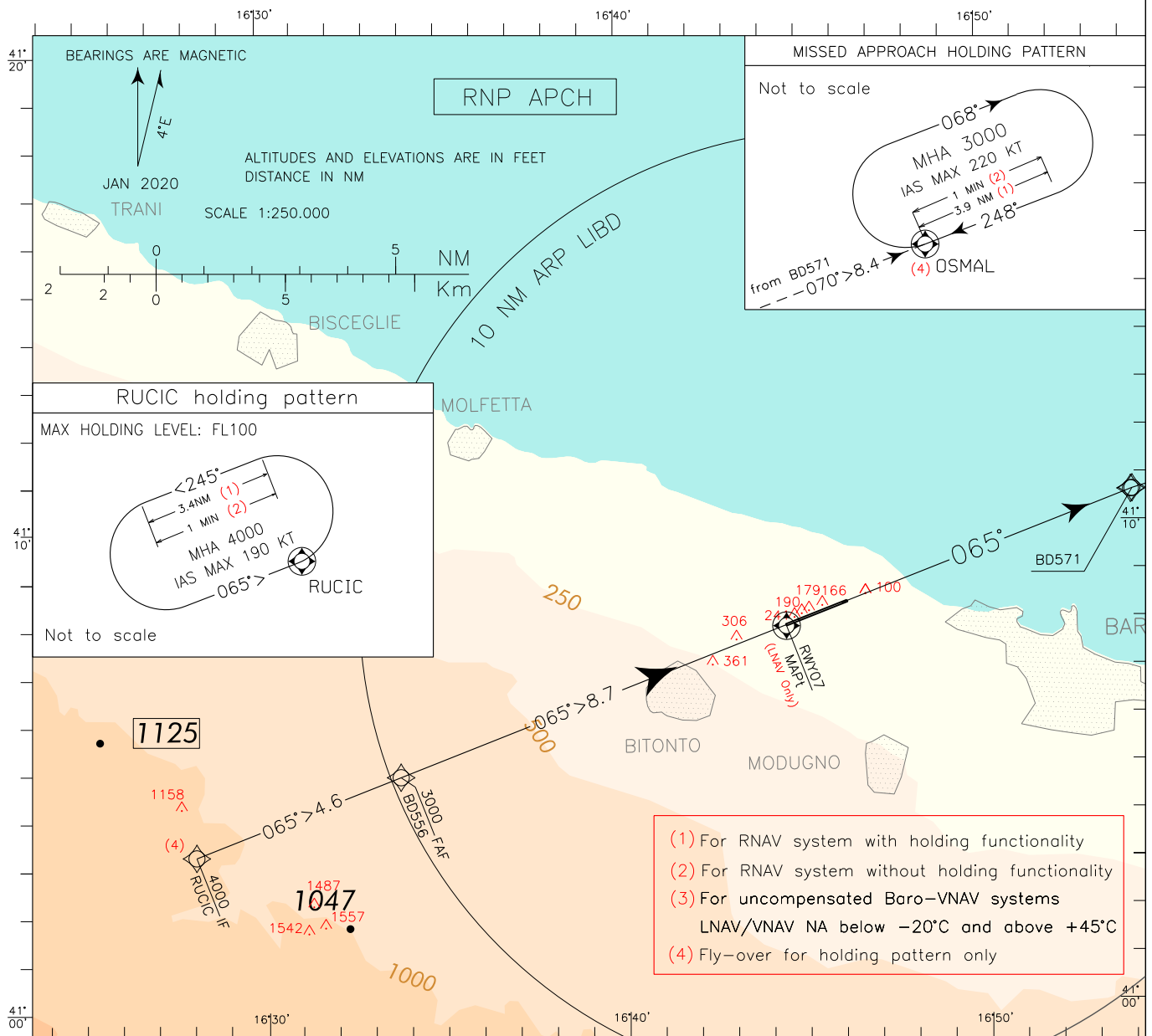
TRANSITION ALT 5000 MISSED APPROACH: Continue on TR 065°, climbing to 3000 ft, until intercepting and following RDL 068° BAR VOR (TR 068°) bound to OSMAL holding pattern.



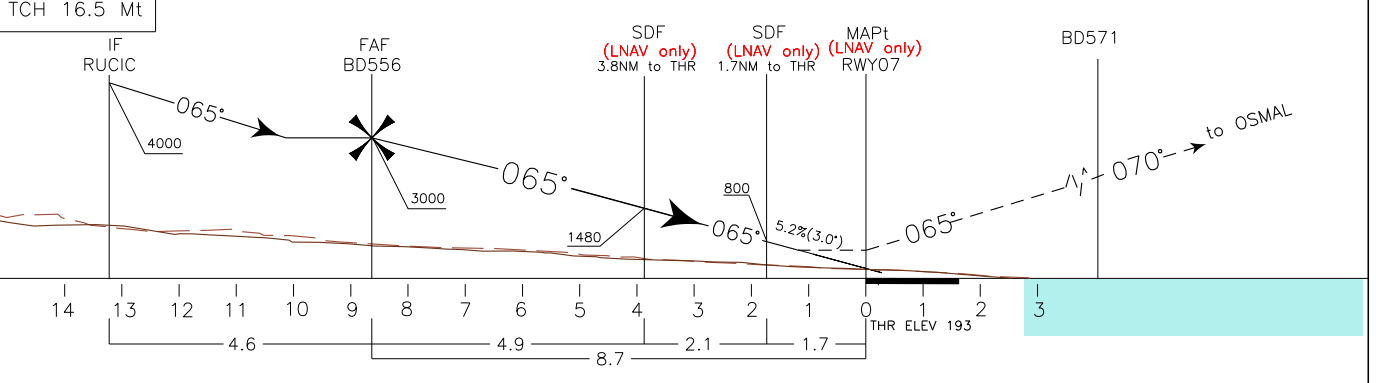
BAP DME		OCA (OCH)				CIRCLING SECTOR (* REMARK: IAS MAX 195 KT 	FT PER MIN	GS	D4.1-D0.8 3.3 NM	D0.8-THR 0.6 NM	B D A M P E	ALT (HGT)	MNM SECT ALT	
BAR DME		A	B	C	D								BAR	VOR
STRAIGHT IN APPROACH	ILS	393(200)	393(200)	393(200)	403(210)	NOT ALLOWED	425	80	2 : 29	0 : 27	5	1770(1577)		
	LOC+DME	620 (427)					531	100	1 : 59	0 : 22	4	1450(1257)		
CIRCLING (*) NORTH OF RWY ONLY		850(657)		950(757)	1090(897)		637	120	1 : 39	0 : 18	3	1130(937)		
		850(657)		950(757)	1090(897)		743	140	1 : 25	0 : 15	2	820(627)		
		850(657)		950(757)	1090(897)		849	160	1 : 14	0 : 14	1	500(307)		


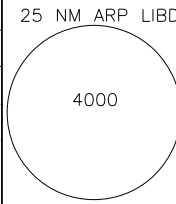
DOC 8168 ED 6 – 2014 AMDT 8

EGNOS CH 92936 E07A	APP Brindisi Radar 118.750 (133.025) TWR Bari TWR 118.300 ATIS Bari ATIS Arrival and Departure Information 124.050	AD ELEV 193	LIBD	BARI/ PALESE RNP RWY 07
---------------------------	--	----------------	------	----------------------------



TRANSITION ALT 5000 MISSED APPROACH: climbing to 3000 ft, proceed to BD571 on course 065°, then proceed on TR 070° to OSMAL holding pattern.



OCA (OCH)	A	B	C	D	CIRCLING SECTOR (* REMARK: IAS MAX 195 KT 	FT PER MIN	GS	DIST THRO7	ALT (HGT)	MNM SECT ALT 25 NM ARP LIBD
STRAIGHT IN APPROACH LPV	406(213)	418(225)	426(233)	437(244)		425	80	6	2100(1907)	
STRAIGHT IN APPROACH LNAV/VNAV (3)	452(259)	464(271)	472(279)	483(290)		531	100	5	1780(1587)	
STRAIGHT IN APPROACH LNAV	630 (437)					637	120	4	1470(1277)	
CIRCLING (*) NORTH OF RWY ONLY	850(657)	950(757)	1090(897)		743	140	3	1150(957)		
					849	160	2	830(637)		

TABULAR DESCRIPTION**RNP RWY07 – Instrument Approach procedure**

Serial Number	Path Terminator	Waypoint Identifier	Fly Over	Course °M(°T)	Magnetic Variation (°)	Distance (NM)	Turn Direction	Altitude (ft)	Speed Limit (kt)	VPA/TCH	Navigation Specification
010	IF	RUCIC	-	-	-	-	-	+4000	-190	-	RNP APCH
020	TF	BD556	-	065 (069.3)	-	4.6	-	+3000	-	-	RNP APCH
030	TF	RWY07	Y	065 (069.3)	-	8.7	-	@247 (3)	-	-3.0/16.5	RNP APCH
040	CF	BD571	-	065 (069.3)	4 E	-	-	-	-	-	RNP APCH
050	TF	OSMAL	-	070 (073.9)	-	8.4	-	+3000	-	-	RNP APCH
060	HM	OSMAL	Y	248 (252.0)	4 E	-	R	+3000	-220		RNAV1

Path Terminator	Waypoint Identifier	Inbound Course °M (°T)	Leg Distance (NM) (1)	Timing(min.)/ Waypoint Distance (NM) (2)	Turn Direction	Minimum Altitude (FT)	Maximum Altitude (FL)	Speed Limit (kt)	Magnetic Variation (°)	Navigation Specification
HM	RUCIC	065 (069.2)	3.4	1/-	L	+4000	-FL100	-190	4 E	RNAV1
HM	OSMAL	248 (252.0)	3.9	1 / -	R	+3000	-	-220	4 E	RNAV 1

- (1) RNAV system with holding functionality
(2) RNAV system without holding functionality
(3) THR Altitude plus TCH.

WAYPOINT LIST

Waypoint Identifier	Coordinates
BD556	41°04'55.65" N 016°33'43.76" E
BD571	41°10'33.87" N 016°53'37.16" E

SBAS FAS DATA BLOCK LIBD RNP RWY07

INPUT DATA	
PARAMETERS	VALUES
Operation Type	0
SBAS Provider	1 (EGNOS)
Airport Identifier	LIBD
Runway	07
Runway Letter	0 (None)
Approach Performance Designator	0
Route Indicator	
Reference Path Data Selector	0
Reference Path Identifier	E07A
LTP/FTP Latitude	410758.3125N
LTP/FTP Longitude	0164426.2565E
LTP/FTP Ellipsoidal Height (metres)	104.7
FPAP Latitude	410832.4040N
Delta FPAP Latitude (seconds)	34.0915
FPAP Longitude	0164626.7050E
Delta FPAP Longitude (seconds)	120.4485
Threshold Crossing Height	54.1
TCH Units Selector	0 (feet)
Glidepath Angle (degrees)	3.00
Course Width (metres)	105.00
Length Offset (metres)	0
HAL (metres)	40.0
VAL (metres)	35.0

OUTPUT DATA	
Data Block	10 04 02 09 0C 07 00 00 01 37 30 05 D1 FD A6 11 21 2E 2F 07 17 18 57 0A 01 01 AD 03 1D 02 2C 01 64 00 C8 AF AD 0A C5 04
Calculated CRC Value	AD0AC504

Required Additional Data (not CRC wrapped)

Parameters	Values
ICAO Code	LI
LTP/FTP Orthometric Height (metres)	58.7

Intenzionalmente bianca

Intentionally left blank

ICAO – INSTRUMENT APPROACH CHART

AD2 LIBD 5-13

DOC 8168 ED 6 - 2014 AMDT 8

CHANGE: REVISED and RENUMBERED CHART

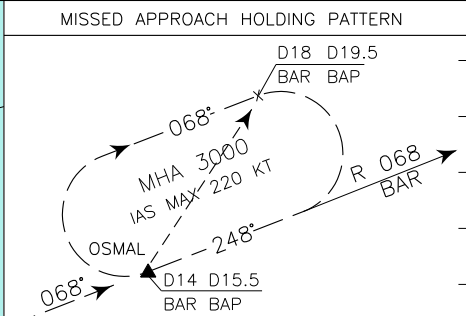
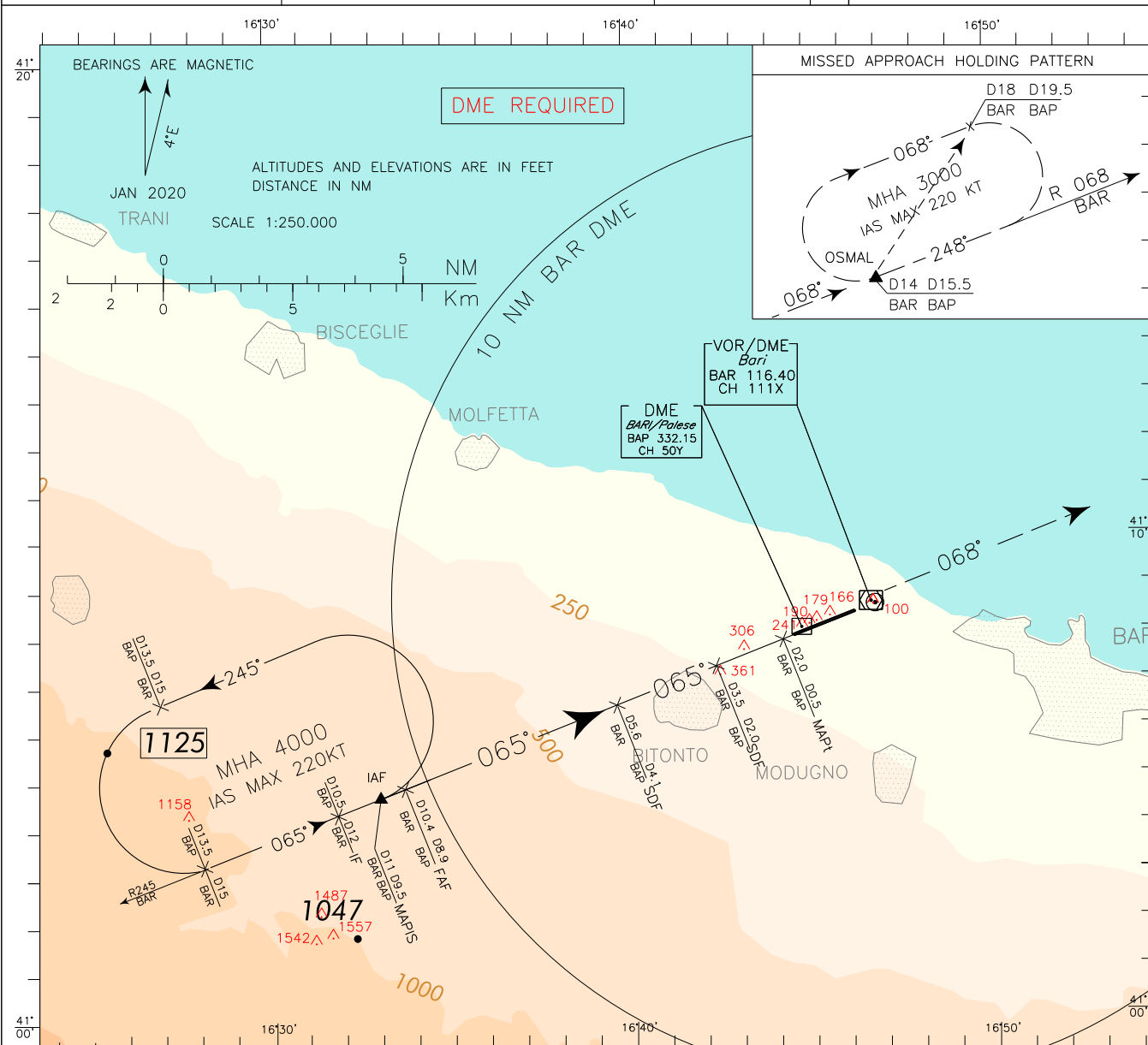
REMARK: Final approach track does not intersect the extended centre line (ECL). Distance between final approach track and extended centre line at 1400 mt before threshold is 107 mt north of ECL.

APP Brindisi Radar 118.750 (133.025)
 TWR Bari TWR 118.300
 ATIS Bari ATIS Arrival and Departure Information 124.050

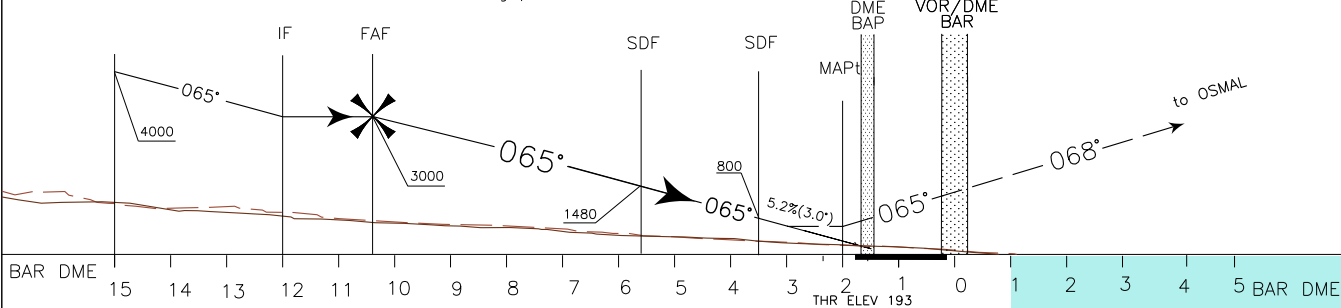
AD ELEV 193

LIBD

BARI/ PALESE
 VOR Z RWY 07



TRANSITION ALT 5000
 MISSED APPROACH: At 2 NM BAR DME (or 0.5 NM BAP DME) climb to 3000 ft and continue on TR 065° (RDL 245 BAR VOR). Over BAR VOR proceed on TR 068° (RDL 068 BAR VOR) bound to OSMAL holding pattern.



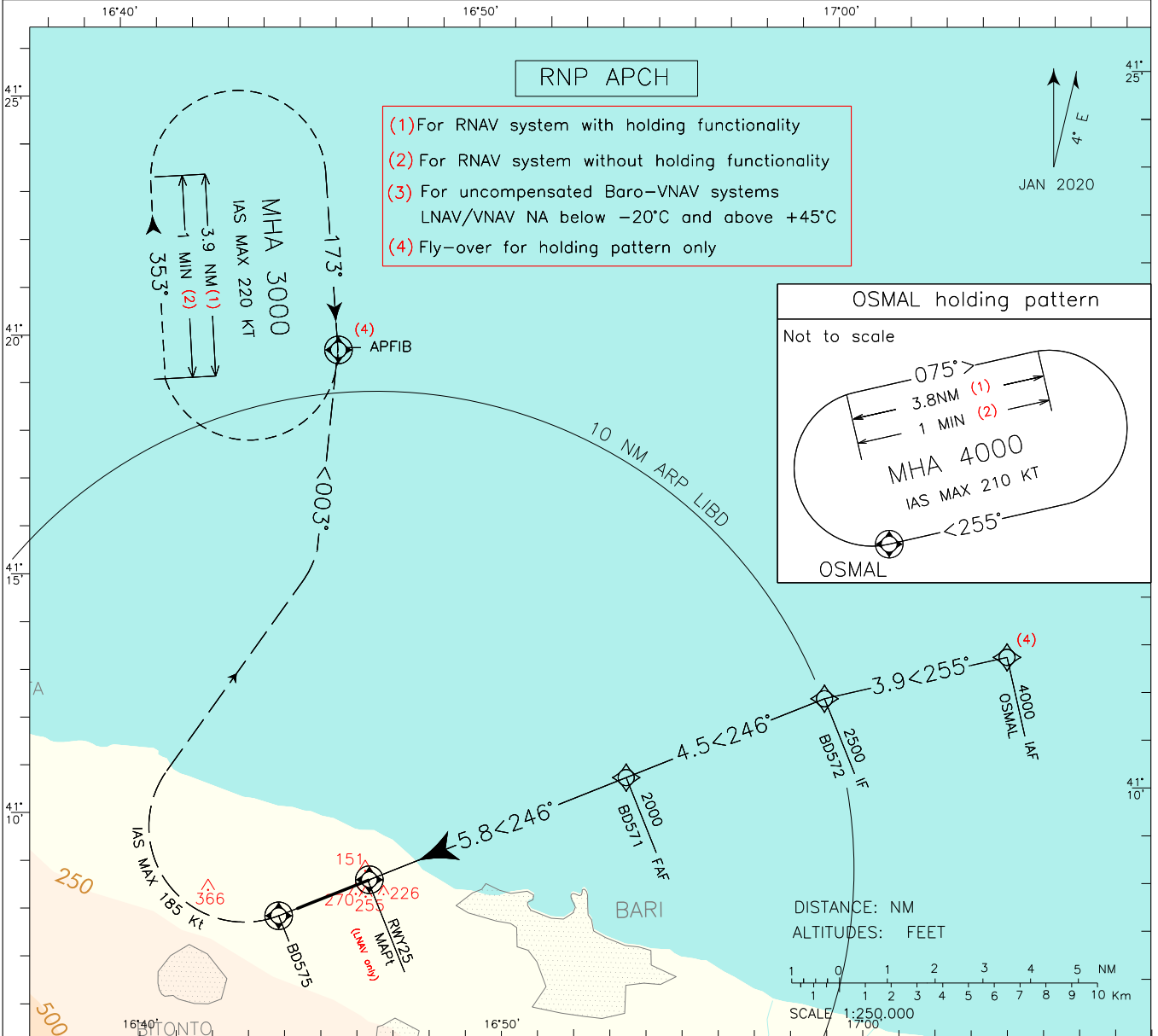
BAR DME 15 14 13 12 11 10 9 8 7 6 5 4 3 2 1 0 1 2 3 4 5 BAR DME
 BAP DME 13 12 11 10 9 8 7 6 5 4 3 2 1 0 1 2 3 4 5 6 BAP DME

OCA (OCH)		A	B	C	D	CIRCLING SECTOR (* REMARK: IAS MAX 195 KT 	FT PER MIN	GS	BAR DME	ALT (HGT)	MNM SECT ALT VOR
STRAIGHT IN APPROACH	VOR/DME	620 (427)						425	80	7	1910(1717)
							531	100	6	1590(1397)	
CIRCLING (*) NORTH OF RWY ONLY		850(657)		950(757)	1090(897)		637	120	5	1270(1077)	
							743	140	4	950(757)	
							849	160	3	630(437)	

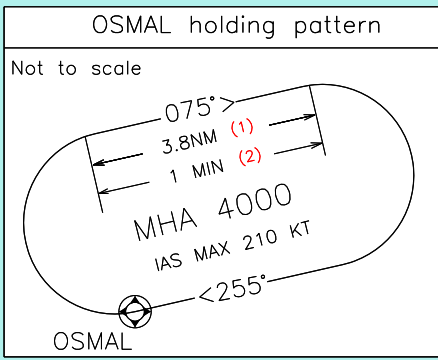
DOC 8168 ED 6 – 2014 AMDT 8

CHANGE: INITIAL and INTERMEDIATE SEGMENT MODIFIED – REVISED AND RENUMBERED CHART

EGNOS CH 83965 E25A	APP	Brindisi Radar	118.750 (133.025)	AD ELEV 193	LIBD	BARI/PALESE RNP RWY 25
	TWR	Bari TWR	118.300			
	ATIS	Bari ATIS Arrival and Departure Information	124.050			



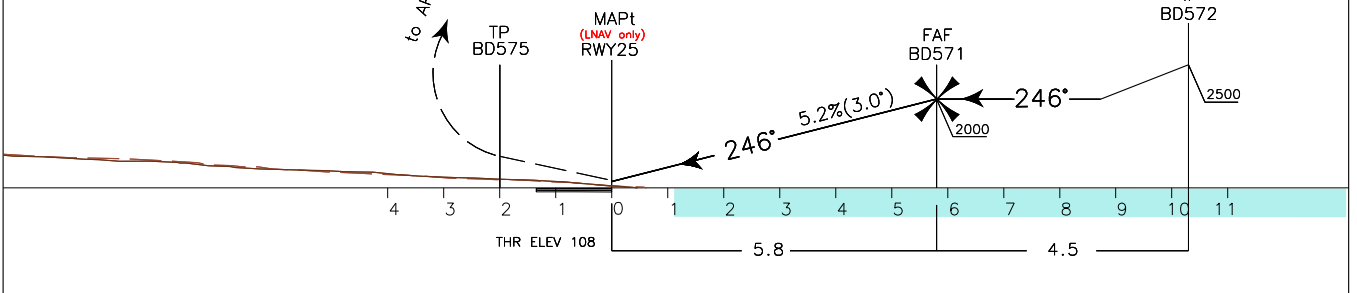
- (1) For RNAV system with holding functionality
- (2) For RNAV system without holding functionality
- (3) For uncompensated Baro-VNAV systems
LNAV/VNAV NA below -20°C and above +45°C
- (4) Fly-over for holding pattern only



TRANSITION ALT 5000 MISSED APPROACH: Climbing to 3000 ft, proceed to BD575 on course 246°. Over BD575 turn right (IAS MAX 185 Kt) on track 003° to APFIB holding pattern.

TCH 15 Mt

REMARK: Missed approach obstacle clearance is provided by 2.5% gradient. 5% gradient (304 ft/NM) is required to remain inside vertical limits of controlled airspace while proceeding to missed approach holding pattern.



OCA (OCH)		A	B	C	D	CIRCLING SECTOR (*): REMARK: IAS MAX 195 KT	FT MIN	GS	DIST THR25	ALT (HGT)	MNM SECT ALT 25 NM ARP LIBD
STRAIGHT IN APPROACH	LPV	414(306)	426(318)	434(326)	445(337)			425	80	5	1750(1642)
	LNAV/VNAV (3)	472(364)	484(376)	492(384)	503(395)	531		100	4	1430(1322)	
	LNAV	600 (492)				637		120	3	1110(1002)	
CIRCLING (*) NORTH OF RWY ONLY	850(657)		950(757)	1090(897)	743	140		2	800(692)		
					849	160		1	480(372)		

TABULAR DESCRIPTION

RNP RWY25 – Instrument Approach procedure

Serial Number	Path Terminator	Waypoint Identifier	Fly Over	Course °M(°T)	Magnetic Variation (°)	Distance (NM)	Turn Direction	Altitude (ft)	Speed Limit (kt)	VPA/TCH	Navigation Specification
010	IF	OSMAL	-	-	-	-	-	+4000	-210	-	RNAV1/RNP1 (1)
040	TF	BD572	-	255 (258.6)	-	3.9	-	+2500	-185	-	RNP APCH
050	TF	BD571	-	246 (249.6)	-	4.5	-	+2000	-	-	RNP APCH
060	TF	RWY25	Y	246 (249.6)	-	5.8	-	@157 (4)	-	-3.0/15.0	RNP APCH
070	CF	BD575	Y	246 (249.5)	4 E	-	-	-	-	-	RNP APCH
080	TF	APFIB	-	003 (006.9)	-	15.0	-	+3000	-185	-	RNP APCH
090	HM	APFIB	Y	173 (177.0)	4 E	-	R	+3000	-220		RNAV1

Path Terminator	Waypoint Identifier	Inbound Course °M (°T)	Leg Distance (NM) (2)	Timing(min.)/Waypoint Distance (NM) (3)	Turn Direction	Minimum Altitude (FT)	Maximum Altitude (FL)	Speed Limit (kt)	Magnetic Variation (°)	Navigation Specification
HM	OSMAL	255 (258.6)	3.8	1 / -	R	4000	-	-210	4 E	RNAV 1
HM	APFIB	173 (177.0)	3.9	1 / -	R	3000	-	-220	4 E	RNAV 1

(1) For “monitoring and alerting” reasons, RNP1 specification is required in case of radar service unavailable or degradation

(2) RNAV system with holding functionality

(3) RNAV system without holding functionality

(4) THR Altitude plus TCH.

WAYPOINT LIST

Waypoint Identifier	Coordinates
BD571	41°10'33.87" N 016°53'37.16" E
BD572	41°12'07.37" N 016°59'09.81" E
BD575	41°07'49.42" N 016°43'54.88" E

SBAS FAS DATA BLOCK LIBD RNP RWY25

INPUT DATA	
PARAMETERS	VALUES
Operation Type	0
SBAS Provider	1 (EGNOS)
Airport Identifier	LIBD
Runway	25
Runway Letter	0 (None)
Approach Performance Designator	0
Route Indicator	
Reference Path Data Selector	0
Reference Path Identifier	E25A
LTP/FTP Latitude	410832.4040N
LTP/FTP Longitude	0164626.7050E
LTP/FTP Ellipsoidal Height (metres)	78.8
FPAP Latitude	410758.3125N
Delta FPAP Latitude (seconds)	-34.0915
FPAP Longitude	0164426.2565E
Delta FPAP Longitude (seconds)	-120.4485
Threshold Crossing Height	50.0
TCH Units Selector	0 (feet)
Glidepath Angle (degrees)	3.00
Course Width (metres)	105.00
Length Offset (metres)	0
HAL (metres)	40.0
VAL (metres)	35.0

OUTPUT DATA	
Data Block	10 04 02 09 0C 19 00 00 01 35 32 05 28 08 A8 11 22 DB 32 07 14 17 A9 F5 FE FF 52 FC F4 01 2C 01 64 00 C8 AF 64 A2 EE 03
Calculated CRC Value	64A2EE03

Required Additional Data (not CRC wrapped)

Parameters	Values
ICAO Code	LI
LTP/FTP Orthometric Height (metres)	32.9

Intenzionalmente bianca

Intentionally left blank

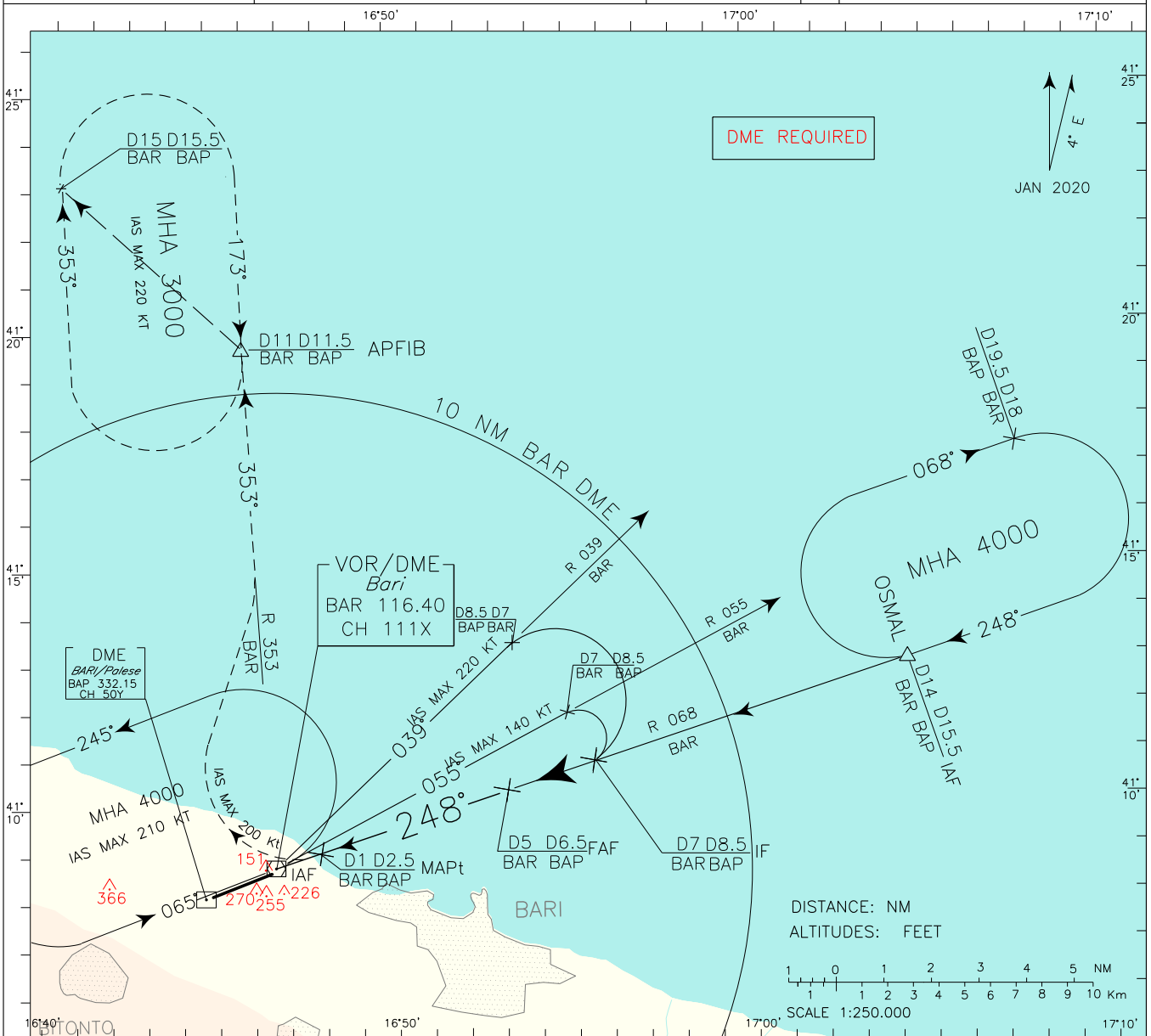
ICAO – INSTRUMENT APPROACH CHART

AD2 LIBD 5-21

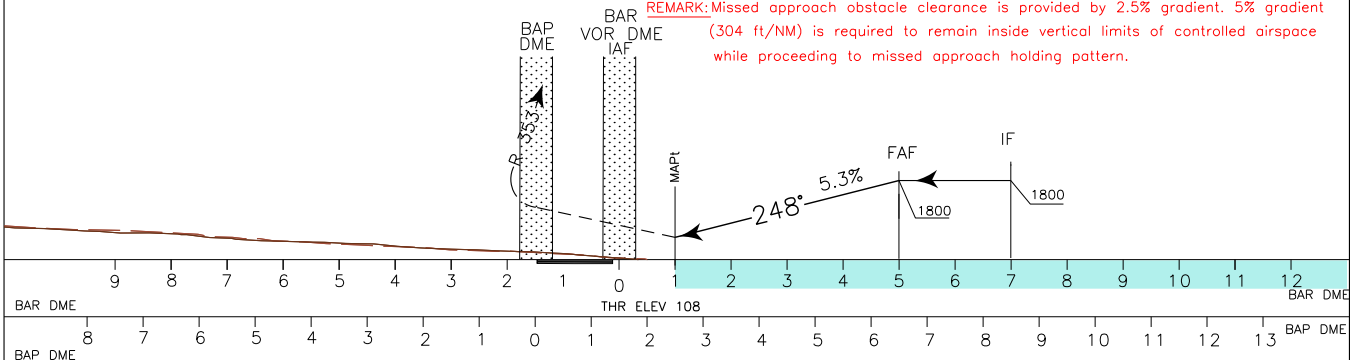
DOC 8168 ED 6 – 2014 AMDT 8

CHANGE: REVISED and RENUMBERED CHART

APP	Brindisi Radar	118.750 (133.025)	AD ELEV	193	LIBD	BARI/ PALESE	
TWR	Bari TWR	118.300				VOR	RWY 25
ATIS	Bari ATIS Arrival and Departure Information	124.050					



REMARK: Missed approach obstacle clearance is provided by 2.5% gradient. 5% gradient (304 ft/NM) is required to remain inside vertical limits of controlled airspace while proceeding to missed approach holding pattern.



ENAV – Roma

AIRAC effective date 15 JUN 2023 (A5/23)