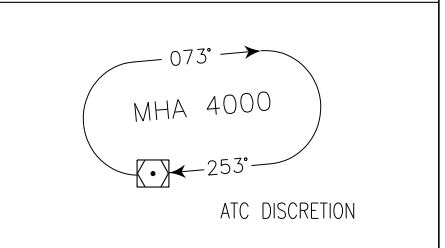
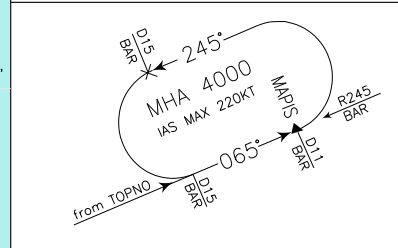


STAR  
VOR  
RWY 07

BARI/PALESE  
TRANSITION ALT 5000

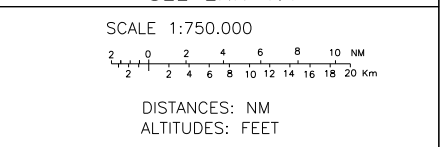
M A P I S Holding Procedure

BAR VOR Holding Procedure

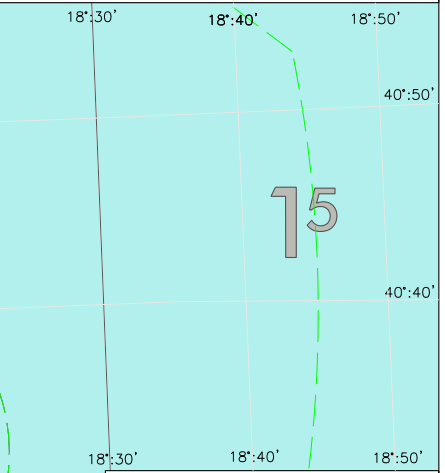


REMARK  
(1) Not available during activation periods of zone: LI R310  
(2) MEA 4000 ft if holding over MAPIS is expected

AIRSPACE CLASSIFICATION  
SEE ENR 1.4



LEGEND  
STAR ———>  
ATC DISCRETION - - - ->  
NOT TO SCALE ———>



CHANGE: STAR BANAV 3C, BIRSU 3C and PISIP 3C WITHDRAWN - BRINDISI CTA ZONE 10 and ZONE 4 LATERAL LIMITS MODIFIED

**STAR VOR RWY07****BANAV 3D**

BANAV – TR 193° (RDL 013 BAR VOR) bound to BAR VOR.

MEL/MEA: BANAV – RDL 013/30 NM BAR VOR/DME: FL 80; RDL 013/30 NM BAR VOR/DME – BAR VOR/DME: 4000 FT

**BIRSU 3D**

BIRSU – TR 185° (RDL 005 BAR VOR) bound to BAR VOR

MEA: BIRSU – BAR VOR/DME: 4000 FT

**DOLON 1D**

DOLON - TR 307° (RDL 307 BCS VOR) – PIKEL – TR 258° (RDL 078 BAR VOR) – BAR VOR.

MEL/MEA: DOLON – RDL 307/41 NM BCS VOR/DME: FL 80; RDL 307/41 NM BCS VOR/DME – BAR VOR: 4000 FT

**EKMUR 2C (1)**

EKMUR – TR 141° (RDL 321 BAR VOR) until 16 NM BAR DME, then turn right until joining ARC 14 NM BAR DME, then crossing RDL 255 BAR VOR turn left bound to MAPIS.

MEL/MEA: EKMUR – INT RDL 321 BAR VOR/16 NM BAR DME: FL 90; INT RDL 321 BAR VOR/16 NM BAR DME – MAPIS: 3000 FT (2)

- (1) Not available during activation periods of zone LI R310  
(2) MEA 4000 FT if is expected holding on MAPIS

**EKMUR 2D (1)**

EKMUR – TR 141° (RDL 321 BAR VOR) bound to BAR VOR.

MEL/MEA: EKMUR – INT RDL 321 BAR VOR/16 NM BAR DME: FL 90; INT RDL 321 BAR VOR/16 NM BAR DME – BAR VOR: 4000 FT

- (1) Not available during activation periods of zone LI R310

**ENOXA 3D**

ENOXA – TR 261° (RDL 081 BAR VOR) bound to BAR VOR.

MEL/MEA: ENOXA – RDL 081/30 NM BAR VOR/DME: FL 80; RDL 081/30 NM BAR VOR/DME – BAR VOR/DME: 4000 FT

**FASAN 3D (ATC discretion)**

FASAN – TR 295° (RDL 115 BAR VOR) bound to BAR VOR.

MEA: FASAN – RDL 115/10 NM BAR VOR/DME: 5000 FT ; RDL 115/10 NM BAR VOR/DME – BAR VOR: 4000 FT

**PISIP 3D**

PISIP – TR 161° (RDL 341 BAR VOR) bound to BAR VOR.

MEA: PISIP – BAR VOR: 4000 FT

**TOPNO 3C**

TOPNO – TR 065° (RDL 245 BAR VOR) bound to MAPIS.

MEA: TOPNO – RDL 245/16 NM BAR VOR/DME: 4000FT; RDL 245/16 NM BAR VOR/DME – MAPIS: 3000 FT (1)

- (1) MEA 4000 FT if is expected holding on MAPIS

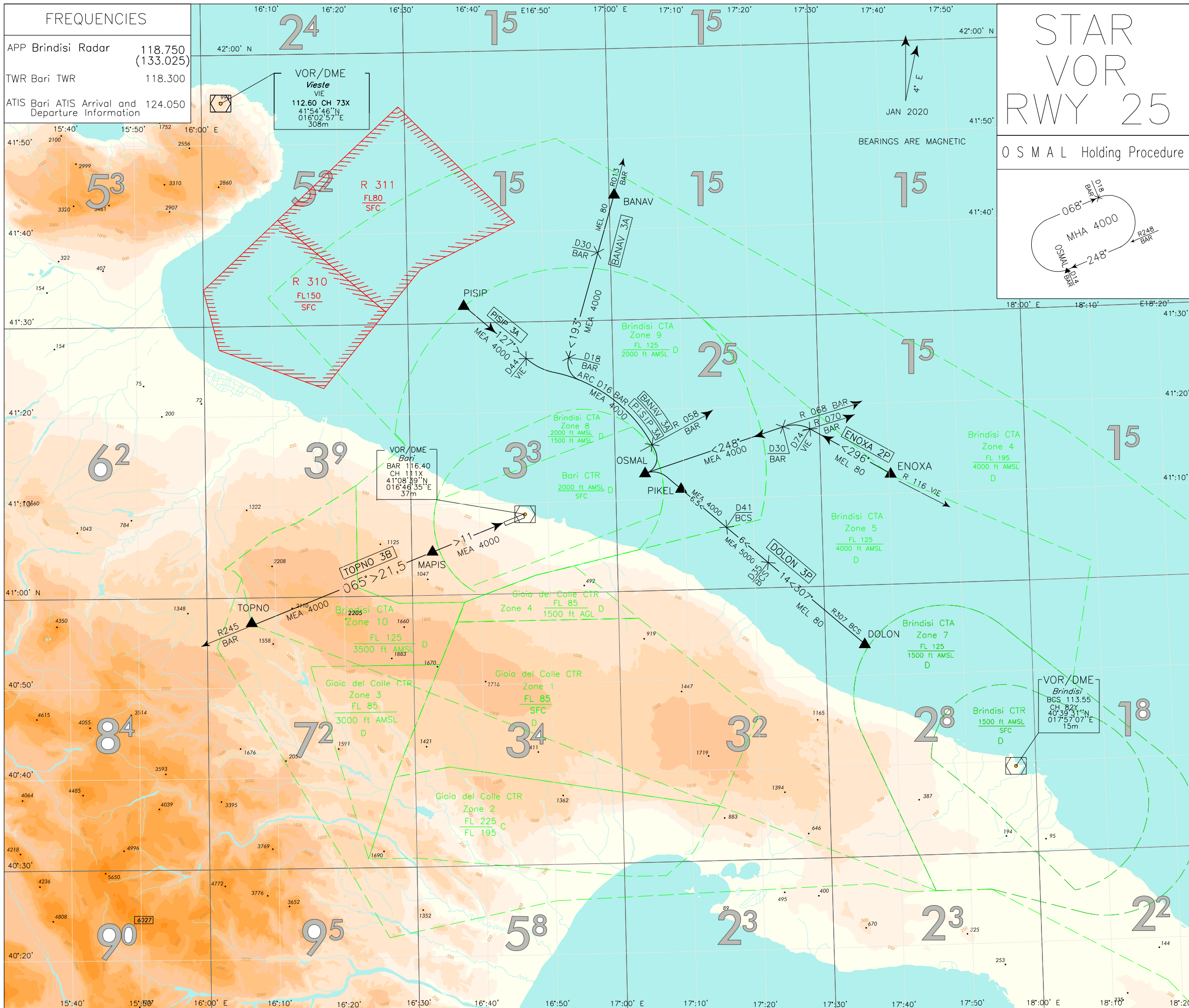
**TOPNO 3D**

TOPNO – TR 065° (RDL 245 BAR VOR) bound to BAR VOR.

MEA: TOPNO – BAR VOR: 4000 FT

Intenzionalmente bianca

*Intentionally left blank*

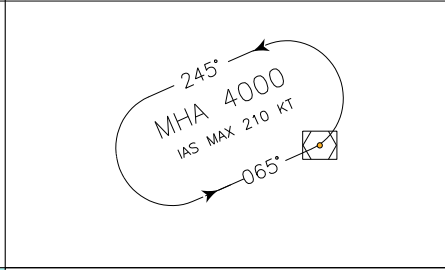
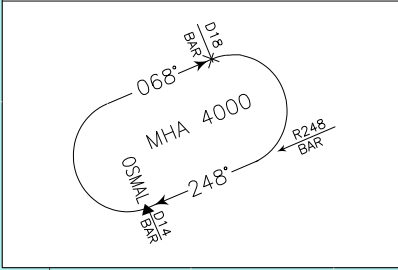


STAR  
VOR  
RWY 25

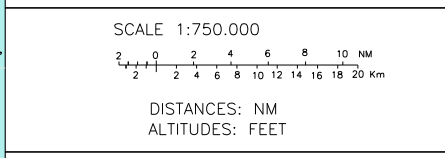
BARI/PALESE  
TRANSITION ALT 5000

O S M A L Holding Procedure

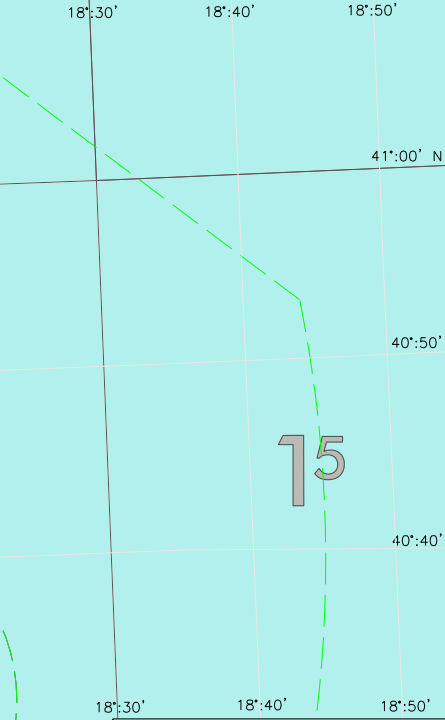
BAR VOR Holding Procedure



AIRSPACE CLASSIFICATION  
SEE ENR 1.4



LEGEND  
STAR →



MNM SECT ALT  
BAR VOR

CHANGE: STAR BANAV 3B, BIRSU 4A/3B, EKMUR 2B, FASAN 3P, LUXL 2A and PISIP 3B WITHDRAWN - BRINDISI CTA ZONE 10 and ZONE 4 LATERAL LIMITS MODIFIED

---

**STAR VOR RWY25****BANAV 3A**

BANAV – TR 193° (RDL 013 BAR VOR) until 18 NM BAR DME, then turn left until joining ARC 16 NM BAR DME. Crossing RDL 058 BAR VOR turn right bound to OSMAL.

MEL/MEA: BANAV – RDL 013/30NM BAR VOR/DME: FL 80; RDL 013/30NM BAR VOR/DME – OSMAL: 4000 FT.

MEA: BIRSU – BAR VOR: 4000 FT.

**DOLON 3P**

DOLON - RDL 307 BCS VOR – PIKEL, then turn left bound to OSMAL

MEL/MEA: DOLON – INT RDL 307/35NM BCS VOR/DME: FL80;  
INT RDL 307/35NM BCS VOR/DME – INT RDL 307/41NM BCS VOR/DME: 5000 FT;  
INT RDL 307/41NM BCS VOR/DME – OSMAL: 4000 FT.

**ENOX 2P**

ENOX – TR 296° (RDL 116 VIE VOR) crossing RDL 070 BAR VOR (74 VIE DME) turn left until joining RDL 068 BAR VOR (TR 248°) bound to OSMAL.

MEL/MEA: ENOX – INT RDL 116 VIE VOR/RDL 070 BAR VOR: FL 80; INT RDL 116 VIE VOR/RDL 070 BAR VOR – OSMAL: 4000 FT.

**PISIP 3A**

PISIP – TR 127° (RDL 127 VIE VOR) until 44 NM VIE DME, then turn left to join ARC 16 NM BAR DME. Crossing RDL 058 BAR VOR turn right bound to OSMAL.

MEA: PISIP – OSMAL: 4000 FT.

**TOPNO 3B**

TOPNO – RDL 245 BAR VOR (TR 065°) bound to BAR VOR.

MEA: TOPNO – BAR VOR: 4000 FT.

Intenzionalmente bianca

*Intentionally left blank*

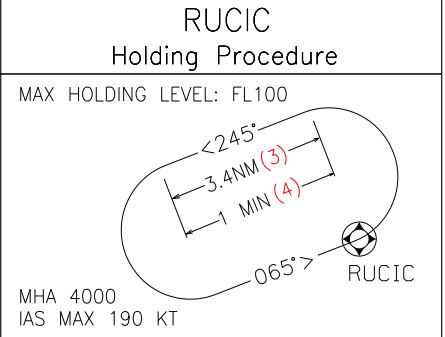
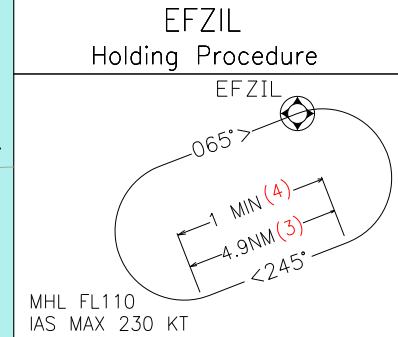


FREQUENCIES	
APP Brindisi Radar	118.750 (133.025)
TWR Bari TWR	118.300
ATIS Bari ATIS Arrival and Departure Information	124.050

- REMARKS**
- (1) Not available during activation periods of zone LI R310
  - (2) MEA 4500FT ATC discretion
  - (3) For RNAV system with holding functionality
  - (4) For RNAV system without holding functionality
  - (5) Fly over for holding pattern only
  - (6) UCFIL between +4000 and -6000 only for direct routing to RUCIC
  - (7) Only for EKMUR 1N: MEL 90 or MEA 4500FT ATC discretion

STAR RWY 07  
RNAV1 or RNP1

BARI/PALESE  
TRANSITION ALT 5000



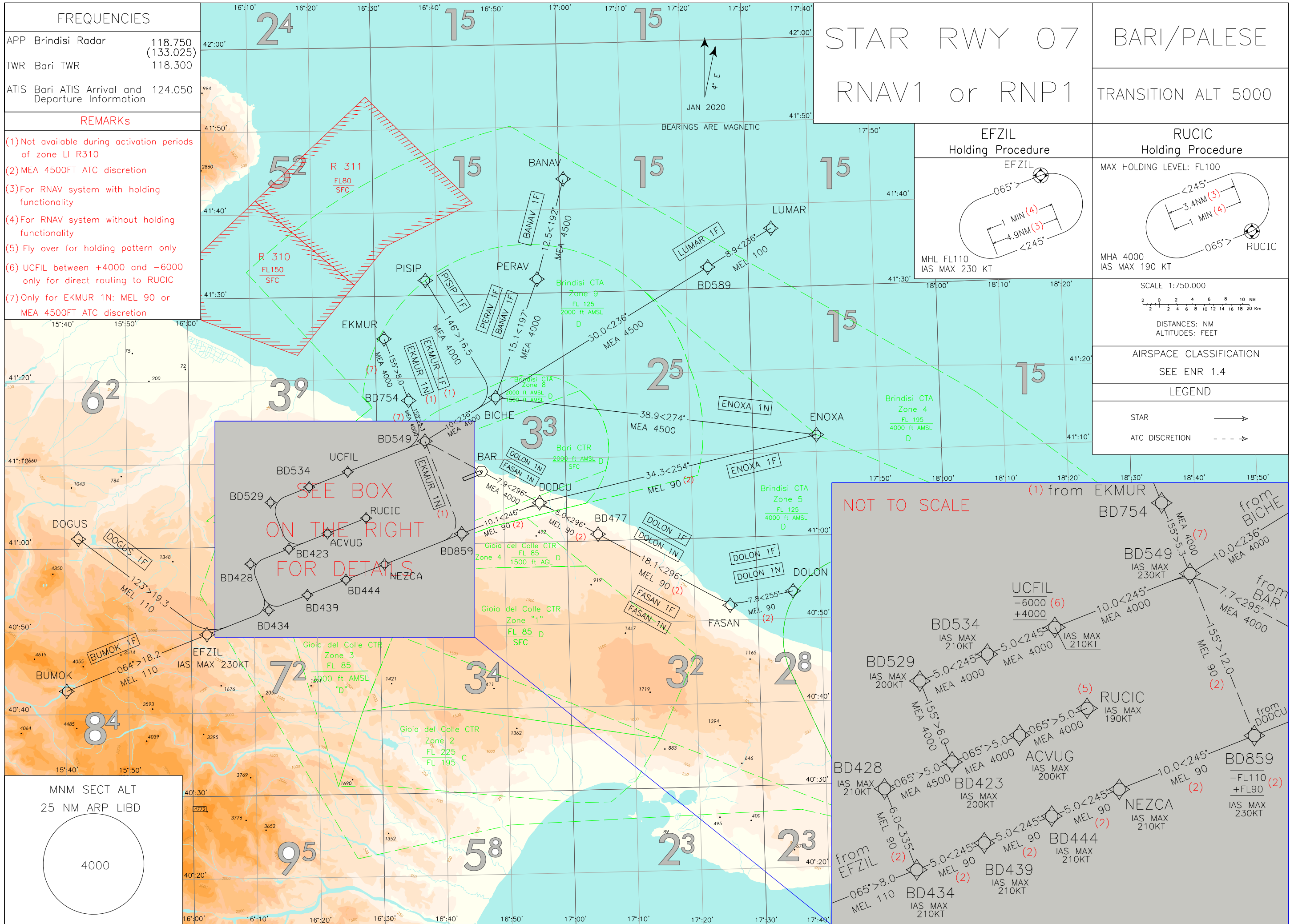
SCALE 1:750.000

DISTANCES: NM  
ALTITUDES: FEET

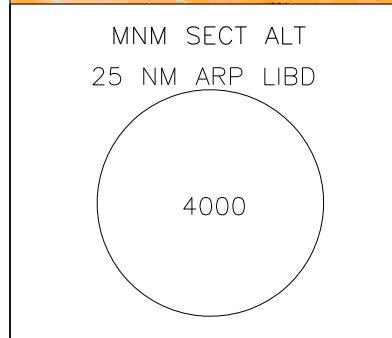
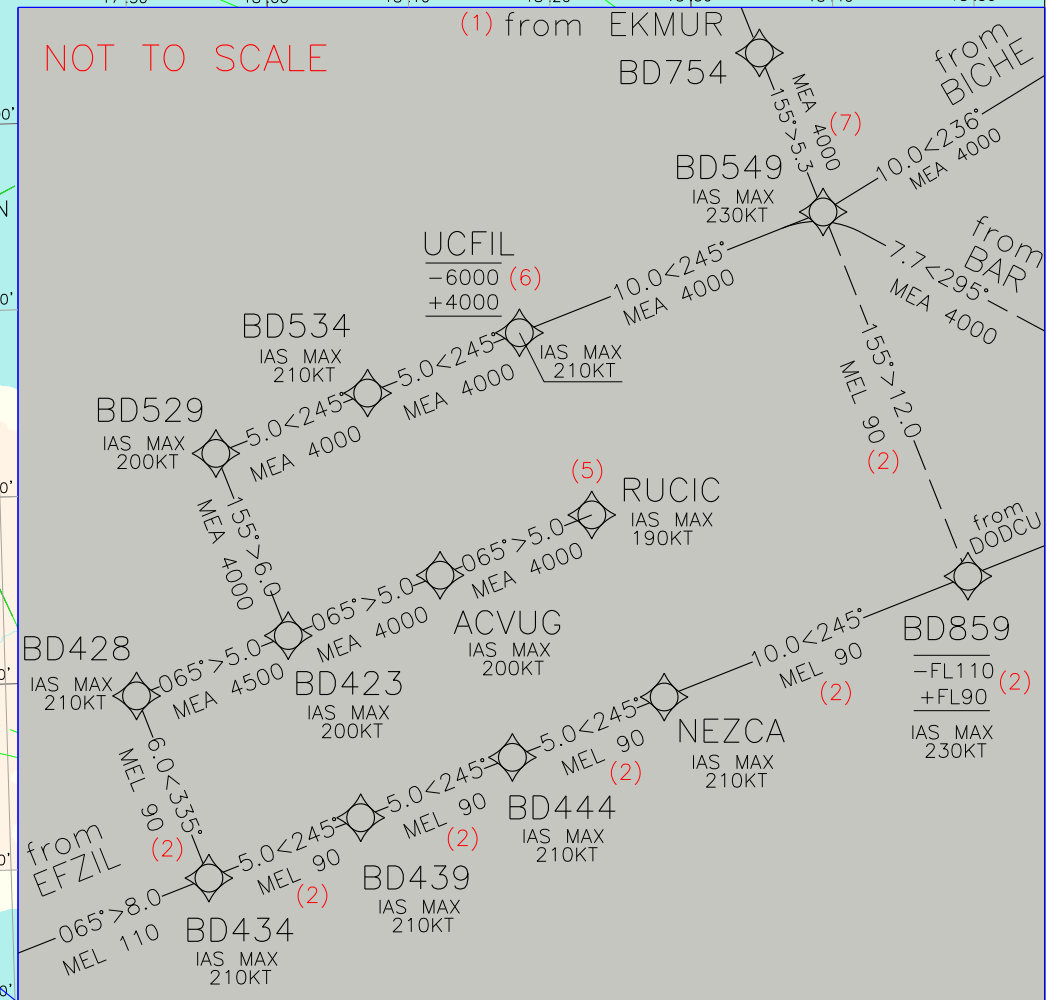
AIRSPACE CLASSIFICATION  
SEE ENR 1.4

LEGEND

STAR →  
ATC DISCRETION - - - →



SEE BOX  
ON THE RIGHT  
FOR DETAILS



### BARI/Palese STAR RNAV1 or RNP1 RWY 07

#### BANAV 1F

Path Terminator	Waypoint Identifier	Fly Over	Course °M(°T)	Magnetic Variation	Distance (NM)	Turn Direction	Altitude (ft)	Speed Limit (kt)	Navigation Specification
IF	BANAV	-	-	-	-	-	-	-	RNAV1/RNP1 (1)
TF	PERAV	-	192 (196.0)	-	12.5	-	+4500	-	RNAV1/RNP1 (1)
TF	BICHE	-	197 (200.5)	-	15.1	-	+4000	-	RNAV1/RNP1 (1)
TF	BD549	-	236 (239.6)	-	10.0	-	+4000	-230	RNAV1/RNP1 (1)
TF	UCFIL	-	245 (249.4)	-	10.0	-	-6000 +4000 (4)	-210	RNAV1/RNP1 (1)
TF	BD534	-	245 (249.3)	-	5.0	-	+4000	-210	RNAV1/RNP1 (1)
TF	BD529	-	245 (249.2)	-	5.0	-	+4000	-200	RNAV1/RNP1 (1)
TF	BD423	-	155 (159.1)	-	6.0	L	+4000	-200	RNAV1/RNP1 (1)
TF	ACVUG	-	065 (069.2)	-	5.0	L	+4000	-200	RNAV1/RNP1 (1)
TF	RUCIC	-	065 (069.2)	-	5.0	-	+4000	-190	RNAV1/RNP1 (1)

#### BUMOK 1F

Path Terminator	Waypoint Identifier	Fly Over	Course °M(°T)	Magnetic Variation	Distance (NM)	Turn Direction	Altitude (ft)	Speed Limit (kt)	Navigation Specification
IF	BUMOK	-	-	-	-	-	-	-	RNAV1/RNP1 (1)
TF	EFZIL	-	064 (068.4)	-	18.2	-	+FL110	-230	RNAV1/RNP1 (1)
TF	BD434	-	065 (069.2)	-	8.0	-	+FL110	-210	RNAV1/RNP1 (1)
TF	BD428	-	335 (339.1)	-	6.0	L	+FL90 (2)	-210	RNAV1/RNP1 (1)
TF	BD423	-	065 (069.1)	-	5.0	R	+4500	-200	RNAV1/RNP1 (1)
TF	ACVUG	-	065 (069.2)	-	5.0	-	+4000	-200	RNAV1/RNP1 (1)
TF	RUCIC	-	065 (069.2)	-	5.0	-	+4000	-190	RNAV1/RNP1 (1)



**DOGUS 1F**

Path Terminator	Waypoint Identifier	Fly Over	Course °M(°T)	Magnetic Variation	Distance (NM)	Turn Direction	Altitude (ft)	Speed Limit (kt)	Navigation Specification
IF	DOGUS	-	-	-	-	-	-	-	RNAV1/RNP1 (1)
TF	EFZIL	-	123 (127.1)	-	19.3	-	+FL110	-230	RNAV1/RNP1 (1)
TF	BD434	-	065 (069.2)	-	8.0	-	+FL110	-210	RNAV1/RNP1 (1)
TF	BD428	-	335 (339.1)	-	6.0	L	+FL90 (2)	-210	RNAV1/RNP1 (1)
TF	BD423	-	065 (069.1)	-	5.0	R	+4500	-200	RNAV1/RNP1 (1)
TF	ACVUG	-	065 (069.2)	-	5.0	-	+4000	-200	RNAV1/RNP1 (1)
TF	RUCIC	-	065 (069.2)	-	5.0	-	+4000	-190	RNAV1/RNP1 (1)

**DOLON 1F**

Path Terminator	Waypoint Identifier	Fly Over	Course °M(°T)	Magnetic Variation	Distance (NM)	Turn Direction	Altitude (ft)	Speed Limit (kt)	Navigation Specification
IF	DOLON	-	-	-	-	-	-	-	RNAV1/RNP1 (1)
TF	FASAN	-	255 (258.8)	-	7.8	-	+FL90 (2)	-	RNAV1/RNP1 (1)
TF	BD477	-	296 (299.9)	-	18.1	-	+FL90 (2)	-	RNAV1/RNP1 (1)
TF	DODCU	-	296 (299.6)	-	8.0	-	+FL90 (2)	-	RNAV1/RNP1 (1)
TF	BD859	-	246 (249.6)	-	10.1	-	-FL110 +FL90 (2)	-230	RNAV1/RNP1 (1)
TF	NEZCA	-	245 (249.4)	-	10.0	-	+FL90 (2)	-210	RNAV1/RNP1 (1)
TF	BD444	-	245 (249.3)	-	5.0	-	+FL90 (2)	-210	RNAV1/RNP1 (1)
TF	BD439	-	245 (249.3)	-	5.0	-	+FL90 (2)	-210	RNAV1/RNP1 (1)
TF	BD434	-	245 (249.2)	-	5.0	-	+FL90 (2)	-210	RNAV1/RNP1 (1)
TF	BD428	-	335 (339.1)	-	6.0	R	+FL90 (2)	-210	RNAV1/RNP1 (1)
TF	BD423	-	065 (069.1)	-	5.0	R	+4500FT	-200	RNAV1/RNP1 (1)
TF	ACVUG	-	065 (069.2)	-	5.0	-	+4000FT	-200	RNAV1/RNP1 (1)
TF	RUCIC	-	065 (069.2)	-	5.0	-	+4000FT	-190	RNAV1/RNP1 (1)

**DOLON 1N (ATC Discretion)**

Path Terminator	Waypoint Identifier	Fly Over	Course °M(°T)	Magnetic Variation	Distance (NM)	Turn Direction	Altitude (ft)	Speed Limit (kt)	Navigation Specification
IF	DOLON	-	-	-	-	-	-	-	RNAV1/RNP1 (1)
TF	FASAN	-	255 (258.8)	-	7.8	-	+FL90 (2)	-	RNAV1/RNP1 (1)
TF	BD477	-	296 (299.9)	-	18.1	-	+FL90 (2)	-	RNAV1/RNP1 (1)
TF	DODCU	-	296 (299.6)	-	8.0	-	+FL90 (2)	-	RNAV1/RNP1 (1)
TF	BAR	-	296 (299.5)	-	7.9	-	+4000	-	RNAV1/RNP1 (1)
TF	BD549	-	295 (299.4)	-	7.7	-	+4000	-230	RNAV1/RNP1 (1)
TF	UCFIL	-	245 (249.4)	-	10.0	-	-6000 +4000 (4)	-210	RNAV1/RNP1 (1)
TF	BD534	-	245 (249.3)	-	5.0	-	+4000	-210	RNAV1/RNP1 (1)
TF	BD529	-	245 (249.2)	-	5.0	-	+4000	-200	RNAV1/RNP1 (1)
TF	BD423	-	155 (159.1)	-	6.0	L	+4000	-200	RNAV1/RNP1 (1)
TF	ACVUG	-	065 (069.2)	-	5.0	L	+4000	-200	RNAV1/RNP1 (1)
TF	RUCIC	-	065 (069.2)	-	5.0	-	+4000	-190	RNAV1/RNP1 (1)

**EKMUR 1F (3)**

Path Terminator	Waypoint Identifier	Fly Over	Course °M(°T)	Magnetic Variation	Distance (NM)	Turn Direction	Altitude (ft)	Speed Limit (kt)	Navigation Specification
IF	EKMUR	-	-	-	-	-	-	-	RNAV1/RNP1 (1)
TF	BD754	-	155 (159.2)	-	8.0	-	+4000	-	RNAV1/RNP1 (1)
TF	BD549	-	155 (159.2)	-	5.3	-	+4000	-230	RNAV1/RNP1 (1)
TF	UCFIL	-	245 (249.4)	-	10.0	-	-6000 +4000 (4)	-210	RNAV1/RNP1 (1)
TF	BD534	-	245 (249.3)	-	5.0	-	+4000	-210	RNAV1/RNP1 (1)
TF	BD529	-	245 (249.2)	-	5.0	-	+4000	-200	RNAV1/RNP1 (1)
TF	BD423	-	155 (159.1)	-	6.0	L	+4000	-200	RNAV1/RNP1 (1)
TF	ACVUG	-	065 (069.2)	-	5.0	L	+4000	-200	RNAV1/RNP1 (1)
TF	RUCIC	-	065 (069.2)	-	5.0	-	+4000	-190	RNAV1/RNP1 (1)

**EKMUR 1N (ATC discretion) (3)**

Path Terminator	Waypoint Identifier	Fly Over	Course °M(°T)	Magnetic Variation	Distance (NM)	Turn Direction	Altitude (ft)	Speed Limit (kt)	Navigation Specification
IF	EKMUR	-	-	-	-	-	-	-	RNAV1/RNP1 (1)
TF	BD754	-	155 (159.2)	-	8.0	-	+FL90 (2)	-	RNAV1/RNP1 (1)
TF	BD549	-	155 (159.2)	-	5.3	-	+FL90 (2)	-230	RNAV1/RNP1 (1)
TF	BD859	-	155 (159.39)	-	12.0	-	-FL110 +FL90 (2)	-230	RNAV1/RNP1 (1)
TF	NEZCA	-	245 (249.4)	-	10.0	R	+FL90 (2)	-210	RNAV1/RNP1 (1)
TF	BD444	-	245 (249.3)	-	5.0	-	+FL90 (2)	-210	RNAV1/RNP1 (1)
TF	BD439	-	245 (249.3)	-	5.0	-	+FL90 (2)	-210	RNAV1/RNP1 (1)
TF	BD434	-	245 (249.2)	-	5.0	-	+FL90 (2)	-210	RNAV1/RNP1 (1)
TF	BD428	-	335 (339.1)	-	6.0	R	+FL90 (2)	-210	RNAV1/RNP1 (1)
TF	BD423	-	065 (069.1)	-	5.0	R	+4500FT	-200	RNAV1/RNP1 (1)
TF	ACVUG	-	065 (069.2)	-	5.0	-	+4000FT	-200	RNAV1/RNP1 (1)
TF	RUCIC	-	065 (069.2)	-	5.0	-	+4000FT	-190	RNAV1/RNP1 (1)

## ENOXA 1F

Path Terminator	Waypoint Identifier	Fly Over	Course °M(°T)	Magnetic Variation	Distance (NM)	Turn Direction	Altitude (ft)	Speed Limit (kt)	Navigation Specification
IF	ENOXA	-	-	-	-	-	-	-	RNAV1/RNP1 (1)
TF	DODCU	-	254 (257.9)	-	34.3	-	+FL90 (2)	-	RNAV1/RNP1 (1)
TF	BD859	-	246 (249.6)	-	10.1	-	-FL110 +FL90 (2)	-230	RNAV1/RNP1 (1)
TF	NEZCA	-	245 (249.4)	-	10.0	-	+FL90 (2)	-210	RNAV1/RNP1 (1)
TF	BD444	-	245 (249.3)	-	5.0	-	+FL90 (2)	-210	RNAV1/RNP1 (1)
TF	BD439	-	245 (249.3)	-	5.0	-	+FL90 (2)	-210	RNAV1/RNP1 (1)
TF	BD434	-	245 (249.2)	-	5.0	-	+FL90 (2)	-210	RNAV1/RNP1 (1)
TF	BD428	-	335 (339.1)	-	6.0	R	+FL90 (2)	-210	RNAV1/RNP1 (1)
TF	BD423	-	065 (069.1)	-	5.0	R	+4500FT	-200	RNAV1/RNP1 (1)
TF	ACVUG	-	065 (069.2)	-	5.0	-	+4000FT	-200	RNAV1/RNP1 (1)
TF	RUCIC	-	065 (069.2)	-	5.0	-	+4000FT	-190	RNAV1/RNP1 (1)

## ENOXA 1N

Path Terminator	Waypoint Identifier	Fly Over	Course °M(°T)	Magnetic Variation	Distance (NM)	Turn Direction	Altitude (ft)	Speed Limit (kt)	Navigation Specification
IF	ENOXA	-	-	-	-	-	-	-	RNAV1/RNP1 (1)
TF	BICHE	-	274 (278.4)	-	38.9	-	+4500	-	RNAV1/RNP1 (1)
TF	BD549	-	236 (239.6)	-	10.0	-	+4000	-230	RNAV1/RNP1 (1)
TF	UCFIL	-	245 (249.4)	-	10.0	-	-6000 +4000 (4)	-210	RNAV1/RNP1 (1)
TF	BD534	-	245 (249.3)	-	5.0	-	+4000	-210	RNAV1/RNP1 (1)
TF	BD529	-	245 (249.2)	-	5.0	-	+4000	-200	RNAV1/RNP1 (1)
TF	BD423	-	155 (159.1)	-	6.0	L	+4000	-200	RNAV1/RNP1 (1)
TF	ACVUG	-	065 (069.2)	-	5.0	L	+4000	-200	RNAV1/RNP1 (1)
TF	RUCIC	-	065 (069.2)	-	5.0	-	+4000	-190	RNAV1/RNP1 (1)

## FASAN 1F

Path Terminator	Waypoint Identifier	Fly Over	Course °M(°T)	Magnetic Variation	Distance (NM)	Turn Direction	Altitude (ft)	Speed Limit (kt)	Navigation Specification
IF	FASAN	-	-	-	-	-	-	-	RNAV1/RNP1 (1)
TF	BD477	-	296 (299.9)	-	18.1	-	+FL90 (2)	-	RNAV1/RNP1 (1)
TF	DODCU	-	296 (299.6)	-	8.0	-	+FL90 (2)	-	RNAV1/RNP1 (1)
TF	BD859	-	246 (249.6)	-	10.1	-	-FL110 +FL90 (2)	-230	RNAV1/RNP1 (1)
TF	NEZCA	-	245 (249.4)	-	10.0	-	+FL90 (2)	-210	RNAV1/RNP1 (1)
TF	BD444	-	245 (249.3)	-	5.0	-	+FL90 (2)	-210	RNAV1/RNP1 (1)
TF	BD439	-	245 (249.3)	-	5.0	-	+FL90 (2)	-210	RNAV1/RNP1 (1)
TF	BD434	-	245 (249.2)	-	5.0	-	+FL90 (2)	-210	RNAV1/RNP1 (1)
TF	BD428	-	335 (339.1)	-	6.0	R	+FL90 (2)	-210	RNAV1/RNP1 (1)
TF	BD423	-	065 (069.1)	-	5.0	R	+4500FT	-200	RNAV1/RNP1 (1)
TF	ACVUG	-	065 (069.2)	-	5.0	-	+4000FT	-200	RNAV1/RNP1 (1)
TF	RUCIC	-	065 (069.2)	-	5.0	-	+4000FT	-190	RNAV1/RNP1 (1)



**FASAN 1N (ATC Discretion)**

Path Terminator	Waypoint Identifier	Fly Over	Course °M(°T)	Magnetic Variation	Distance (NM)	Turn Direction	Altitude (ft)	Speed Limit (kt)	Navigation Specification
IF	FASAN	-	-	-	-	-	-	-	RNAV1/RNP1 (1)
TF	BD477	-	296 (299.9)	-	18.1	-	+FL90 (2)	-	RNAV1/RNP1 (1)
TF	DODCU	-	296 (299.6)	-	8.0	-	+FL90 (2)	-	RNAV1/RNP1 (1)
TF	BAR	-	296 (299.5)	-	7.9	-	+4000	-	RNAV1/RNP1 (1)
TF	BD549	-	295 (299.4)	-	7.7	-	+4000	-230	RNAV1/RNP1 (1)
TF	UCFIL	-	245 (249.4)	-	10.0	-	-6000 +4000 (4)	-210	RNAV1/RNP1 (1)
TF	BD534	-	245 (249.3)	-	5.0	-	+4000	-210	RNAV1/RNP1 (1)
TF	BD529	-	245 (249.2)	-	5.0	-	+4000	-200	RNAV1/RNP1 (1)
TF	BD423	-	155 (159.1)	-	6.0	L	+4000	-200	RNAV1/RNP1 (1)
TF	ACVUG	-	065 (069.2)	-	5.0	L	+4000	-200	RNAV1/RNP1 (1)
TF	RUCIC	-	065 (069.2)	-	5.0	-	+4000	-190	RNAV1/RNP1 (1)

**LUMAR 1F**

Path Terminator	Waypoint Identifier	Fly Over	Course °M(°T)	Magnetic Variation	Distance (NM)	Turn Direction	Altitude (ft)	Speed Limit (kt)	Navigation Specification
IF	LUMAR	-	-	-	-	-	-	-	RNAV1/RNP1 (1)
TF	BD589	-	236 (240.1)	-	8.9	-	+FL100	-	RNAV1/RNP1 (1)
TF	BICHE	-	236 (240.0)	-	30.0	-	+4500	-	RNAV1/RNP1 (1)
TF	BD549	-	236 (239.6)	-	10.0	-	+4000	-230	RNAV1/RNP1 (1)
TF	UCFIL	-	245 (249.4)	-	10.0	-	-6000 +4000 (4)	-210	RNAV1/RNP1 (1)
TF	BD534	-	245 (249.3)	-	5.0	-	+4000	-210	RNAV1/RNP1 (1)
TF	BD529	-	245 (249.2)	-	5.0	-	+4000	-200	RNAV1/RNP1 (1)
TF	BD423	-	155 (159.1)	-	6.0	L	+4000	-200	RNAV1/RNP1 (1)
TF	ACVUG	-	065 (069.2)	-	5.0	L	+4000	-200	RNAV1/RNP1 (1)
TF	RUCIC	-	065 (069.2)	-	5.0	-	+4000	-190	RNAV1/RNP1 (1)

## PERAV 1F

Path Terminator	Waypoint Identifier	Fly Over	Course °M(°T)	Magnetic Variation	Distance (NM)	Turn Direction	Altitude (ft)	Speed Limit (kt)	Navigation Specification
IF	PERAV	-	-	-	-	-	-	-	RNAV1/RNP1 (1)
TF	BICHE	-	197 (200.5)	-	15.1	-	+4000	-	RNAV1/RNP1 (1)
TF	BD549	-	236 (239.6)	-	10.0	-	+4000	-230	RNAV1/RNP1 (1)
TF	UCFIL	-	245 (249.4)	-	10.0	-	-6000 +4000 (4)	-210	RNAV1/RNP1 (1)
TF	BD534	-	245 (249.3)	-	5.0	-	+4000	-210	RNAV1/RNP1 (1)
TF	BD529	-	245 (249.2)	-	5.0	-	+4000	-200	RNAV1/RNP1 (1)
TF	BD423	-	155 (159.1)	-	6.0	L	+4000	-200	RNAV1/RNP1 (1)
TF	ACVUG	-	065 (069.2)	-	5.0	L	+4000	-200	RNAV1/RNP1 (1)
TF	RUCIC	-	065 (069.2)	-	5.0	-	+4000	-190	RNAV1/RNP1 (1)

## PISIP 1F

Path Terminator	Waypoint Identifier	Fly Over	Course °M(°T)	Magnetic Variation	Distance (NM)	Turn Direction	Altitude (ft)	Speed Limit (kt)	Navigation Specification
IF	PISIP	-	-	-	-	-	-	-	RNAV1/RNP1 (1)
TF	BICHE	-	146 (150.1)	-	16.5	R	+4000	-	RNAV1/RNP1 (1)
TF	BD549	-	236 (239.6)	-	10.0	-	+4000	-230	RNAV1/RNP1 (1)
TF	UCFIL	-	245 (249.4)	-	10.0	-	-6000 +4000 (4)	-210	RNAV1/RNP1 (1)
TF	BD534	-	245 (249.3)	-	5.0	-	+4000	-210	RNAV1/RNP1 (1)
TF	BD529	-	245 (249.2)	-	5.0	-	+4000	-200	RNAV1/RNP1 (1)
TF	BD423	-	155 (159.1)	-	6.0	L	+4000	-200	RNAV1/RNP1 (1)
TF	ACVUG	-	065 (069.2)	-	5.0	L	+4000	-200	RNAV1/RNP1 (1)
TF	RUCIC	-	065 (069.2)	-	5.0	-	+4000	-190	RNAV1/RNP1 (1)

**REMARKS**

- (1) For “monitoring and alerting” reasons, RNP1 specification is required in case of radar service unavailability or degradation
- (2) MEA 4500FT ATC Discretion
- (3) Not available during activation periods of zone LI R310
- (4) UCFIL between +4000FT and -6000FT only for direct routing to RUCIC

**Holding RNAV**

Path Terminator	Waypoint Identifier	Inbound Course °M (°T)	Leg Distance (NM) (1)	Timing(min.)/ Waypoint Distance (NM) (2)	Turn Direction	Minimum Altitude (FT)	Maximum Altitude (FL)	Speed Limit (kt)	Magnetic Variation (°)	Navigation Specification
HM	RUCIC	065 (069.2)	3.4	1/-	L	+4000	-FL100	-190	4 E	RNAV1
HM	EFZIL	065 (069.2)	4.9	1/-	R	+FL110	-	-230	4 E	RNAV1

- (1) RNAV system with holding functionality
- (2) RNAV system without holding functionality

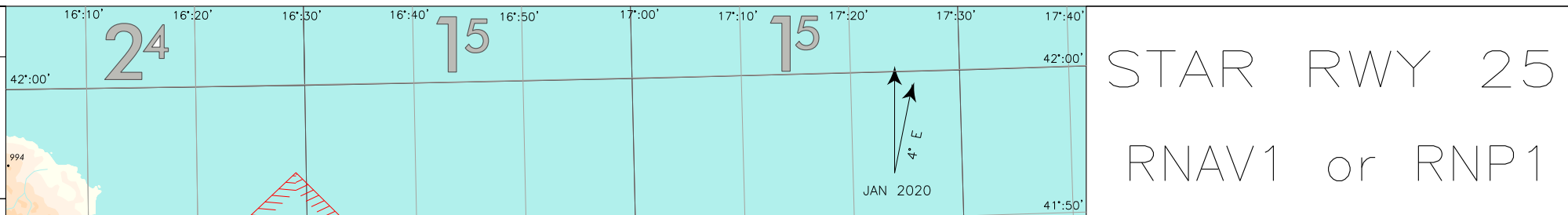
**WAYPOINT LIST**

Waypoint Identifier	Coordinates
BD423	40° 59' 45.27" N 016° 15' 41.86" E
BD428	40° 57' 58.23" N 016° 09' 31.68" E
BD434	40° 52' 21.63" N 016° 12' 21.17" E
BD439	40° 54' 08.53" N 016° 18' 30.90" E
BD444	40° 55' 55.10" N 016° 24' 40.94" E
BD477	41° 00' 47.94" N 017° 04' 55.33" E
BD529	41° 05' 21.95" N 016° 12' 52.36" E
BD534	41° 07' 08.81" N 016° 19' 03.32" E
BD549	41° 12' 27.45" N 016° 37' 38.66" E
BD589	41° 32' 38.81" N 017° 23' 31.42" E
BD754	41° 17' 22.93" N 016° 35' 10.27" E
BD859	41° 01' 12.89" N 016° 43' 13.52" E

Intenzionalmente bianca

*Intentionally left blank*

FREQUENCIES	
APP Brindisi Radar	118.750 (133.025)
TWR Bari TWR	118.300
ATIS Bari ATIS Arrival and Departure Information	124.050



STAR RWY 25	BARI/PALESE
RNAV1 or RNP1	TRANSITION ALT 5000

REMARKS

- (1) Not available during activation periods of zone LI R310
- (2) MEA 4500FT ATC discretion
- (3) For RNAV system with holding functionality
- (4) For RNAV system without holding functionality
- (5) BD547 between +4000 and -5000 only for direct routing to IF BD572 of RNP approach RWY 25
- (6) ARZUV between +4000 and -5000 only for BANAV 1H, LUMAR 1H and PERAV 1H in case of direct routing to IF BD572 of RNP approach RWY 25
- (7) Fly over for holding pattern only

OSMAL Holding Procedure

OSMAL MHA 4000 IAS MAX 210 KT

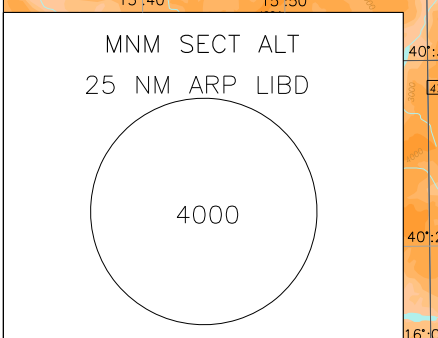
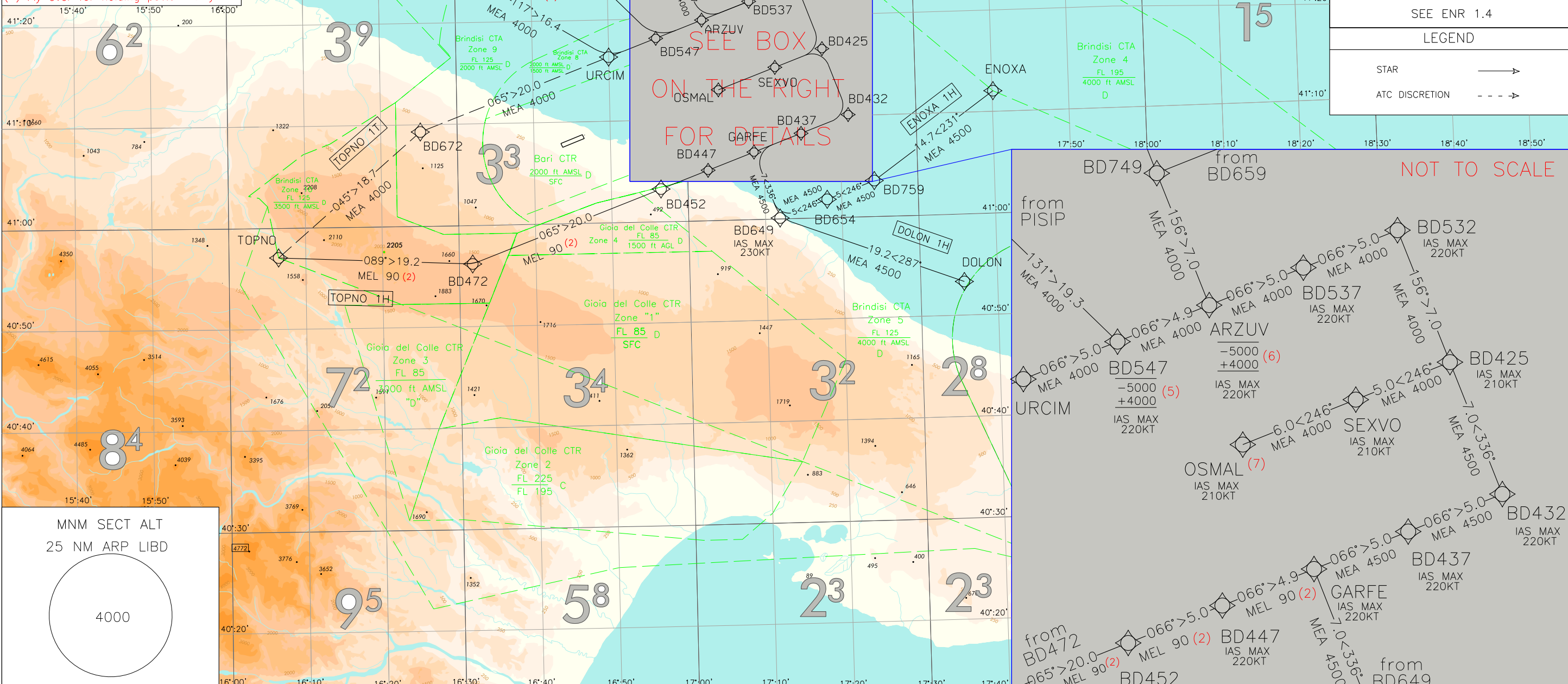
SCALE 1:750.000

DISTANCES: NM  
ALTITUDES: FEET

AIRSPACE CLASSIFICATION  
SEE ENR 1.4

LEGEND

STAR →  
ATC DISCRETION - - - →





## BARI/Palese STAR RNAV1 or RNP1 RWY 25

### BANAV 1H

Path Terminator	Waypoint Identifier	Fly Over	Course °M(°T)	Magnetic Variation	Distance (NM)	Turn Direction	Altitude (ft)	Speed Limit (kt)	Navigation Specification
IF	BANAV	-	-	-	-	-	-	-	RNAV1/RNP1 (1)
TF	PERAV	-	192 (196.0)	-	12.5	-	+4500	-	RNAV1/RNP1 (1)
TF	BD749	-	154 (157.5)	-	5.8	-	+4000	-230	RNAV1/RNP1 (1)
TF	ARZUV	-	156 (159.6)	-	7.0	-	-5000 +4000 (5)	-220	RNAV1/RNP1 (1)
TF	BD537	-	066 (069.7)	-	5.0	L	+4000	-220	RNAV1/RNP1 (1)
TF	BD532	-	066 (069.7)	-	5.0	-	+4000	-220	RNAV1/RNP1 (1)
TF	BD425	-	156 (159.8)	-	7.0	R	+4000	-210	RNAV1/RNP1 (1)
TF	SEXVO	-	246 (249.9)	-	5.0	R	+4000	-210	RNAV1/RNP1 (1)
TF	OSMAL	-	246 (249.8)	-	6.0	-	+4000	-210	RNAV1/RNP1 (1)

### DOLON 1H

Path Terminator	Waypoint Identifier	Fly Over	Course °M(°T)	Magnetic Variation	Distance (NM)	Turn Direction	Altitude (ft)	Speed Limit (kt)	Navigation Specification
IF	DOLON	-	-	-	-	-	-	-	RNAV1/RNP1 (1)
TF	BD649	-	287 (290.7)	-	19.2	-	+4500	-230	RNAV1/RNP1 (1)
TF	GARFE	-	336 (339.8)	-	7.0	-	+4500	-220	RNAV1/RNP1 (1)
TF	BD437	-	066 (069.7)	-	5.0	R	+4500	-220	RNAV1/RNP1 (1)
TF	BD432	-	066 (069.8)	-	5.0	-	+4500	-220	RNAV1/RNP1 (1)
TF	BD425	-	336 (339.9)	-	7.0	L	+4500	-210	RNAV1/RNP1 (1)
TF	SEXVO	-	246 (249.9)	-	5.0	L	+4000	-210	RNAV1/RNP1 (1)
TF	OSMAL	-	246 (249.8)	-	6.0	-	+4000	-210	RNAV1/RNP1 (1)

**EKMUR 1H (3)**

Path Terminator	Waypoint Identifier	Fly Over	Course °M(°T)	Magnetic Variation	Distance (NM)	Turn Direction	Altitude (ft)	Speed Limit (kt)	Navigation Specification
IF	EKMUR	-	-	-	-	-	-	-	RNAV1/RNP1 (1)
TF	URCIM	-	117 (121.1)	-	16.4	-	+4000	-	RNAV1/RNP1 (1)
TF	BD547	-	066 (069.5)	-	5.0	-	-5000 +4000 (4)	-220	RNAV1/RNP1 (1)
TF	ARZUV	-	066 (069.6)	-	4.9	-	+4000	-220	RNAV1/RNP1 (1)
TF	BD537	-	066 (069.7)	-	5.0	-	+4000	-220	RNAV1/RNP1 (1)
TF	BD532	-	066 (069.7)	-	5.0	-	+4000	-220	RNAV1/RNP1 (1)
TF	BD425	-	156 (159.8)	-	7.0	R	+4000	-210	RNAV1/RNP1 (1)
TF	SEXVO	-	246 (249.9)	-	5.0	R	+4000	-210	RNAV1/RNP1 (1)
TF	OSMAL	-	246 (249.8)	-	6.0	-	+4000	-210	RNAV1/RNP1 (1)

**ENOXA 1H**

Path Terminator	Waypoint Identifier	Fly Over	Course °M(°T)	Magnetic Variation	Distance (NM)	Turn Direction	Altitude (ft)	Speed Limit (kt)	Navigation Specification
IF	ENOXA	-	-	-	-	-	-	-	RNAV1/RNP1 (1)
TF	BD759	-	231 (234.6)	-	14.7	-	+4500	-	RNAV1/RNP1 (1)
TF	BD654	-	246 (249.9)	-	5.0	-	+4500	-	RNAV1/RNP1 (1)
TF	BD649	-	246 (249.8)	-	5.0	-	+4500	-230	RNAV1/RNP1 (1)
TF	GARFE	-	336 (339.8)	-	7.0	R	+4500	-220	RNAV1/RNP1 (1)
TF	BD437	-	066 (069.7)	-	5.0	R	+4500	-220	RNAV1/RNP1 (1)
TF	BD432	-	066 (069.8)	-	5.0	-	+4500	-220	RNAV1/RNP1 (1)
TF	BD425	-	336 (339.9)	-	7.0	L	+4500	-210	RNAV1/RNP1 (1)
TF	SEXVO	-	246 (249.9)	-	5.0	L	+4000	-210	RNAV1/RNP1 (1)
TF	OSMAL	-	246 (249.8)	-	6.0	-	+4000	-210	RNAV1/RNP1 (1)

**LUMAR 1H**

Path Terminator	Waypoint Identifier	Fly Over	Course °M(°T)	Magnetic Variation	Distance (NM)	Turn Direction	Altitude (ft)	Speed Limit (kt)	Navigation Specification
IF	LUMAR	-	-	-	-	-	-	-	RNAV1/RNP1 (1)
TF	BD568	-	243 (246.7)	-	9.3	-	+FL100	-	RNAV1/RNP1 (1)
TF	BD659	-	243 (246.6)	-	9.0	-	+4500	-	RNAV1/RNP1 (1)
TF	BD749	-	246 (249.8)	-	10.0	-	+4000	-230	RNAV1/RNP1 (1)
TF	ARZUV	-	156 (159.6)	-	7.0	L	-5000 +4000 (5)	-220	RNAV1/RNP1 (1)
TF	BD537	-	066 (069.7)	-	5.0	L	+4000	-220	RNAV1/RNP1 (1)
TF	BD532	-	066 (069.7)	-	5.0	-	+4000	-220	RNAV1/RNP1 (1)
TF	BD425	-	156 (159.8)	-	7.0	R	+4000	-210	RNAV1/RNP1 (1)
TF	SEXVO	-	246 (249.9)	-	5.0	R	+4000	-210	RNAV1/RNP1 (1)
TF	OSMAL	-	246 (249.8)	-	6.0	-	+4000	-210	RNAV1/RNP1 (1)

**PERAV 1H**

Path Terminator	Waypoint Identifier	Fly Over	Course °M(°T)	Magnetic Variation	Distance (NM)	Turn Direction	Altitude (ft)	Speed Limit (kt)	Navigation Specification
IF	PERAV	-	-	-	-	-	-	-	RNAV1/RNP1 (1)
TF	BD749	-	154 (157.5)	-	5.8	-	+4000	-230	RNAV1/RNP1 (1)
TF	ARZUV	-	156 (159.6)	-	7.0	-	-5000 +4000 (5)	-220	RNAV1/RNP1 (1)
TF	BD537	-	066 (069.7)	-	5.0	L	+4000	-220	RNAV1/RNP1 (1)
TF	BD532	-	066 (069.7)	-	5.0	-	+4000	-220	RNAV1/RNP1 (1)
TF	BD425	-	156 (159.8)	-	7.0	R	+4000	-210	RNAV1/RNP1 (1)
TF	SEXVO	-	246 (249.9)	-	5.0	R	+4000	-210	RNAV1/RNP1 (1)
TF	OSMAL	-	246 (249.8)	-	6.0	-	+4000	-210	RNAV1/RNP1 (1)

## PISIP 1H

Path Terminator	Waypoint Identifier	Fly Over	Course °M(°T)	Magnetic Variation	Distance (NM)	Turn Direction	Altitude (ft)	Speed Limit (kt)	Navigation Specification
IF	PISIP	-	-	-	-	-	-	-	RNAV1/RNP1 (1)
TF	BD547	-	131 (135.2)	-	19.3	-	-5000 +4000 (4)	-220	RNAV1/RNP1 (1)
TF	ARZUV	-	066 (069.6)	-	4.9	-	+4000	-220	RNAV1/RNP1 (1)
TF	BD537	-	066 (069.7)	-	5.0	-	+4000	-220	RNAV1/RNP1 (1)
TF	BD532	-	066 (069.7)	-	5.0	-	+4000	-220	RNAV1/RNP1 (1)
TF	BD425	-	156 (159.8)	-	7.0	R	+4000	-210	RNAV1/RNP1 (1)
TF	SEXVO	-	246 (249.9)	-	5.0	R	+4000	-210	RNAV1/RNP1 (1)
TF	OSMAL	-	246 (249.8)	-	6.0	-	+4000	-210	RNAV1/RNP1 (1)

## TOPNO 1H

Path Terminator	Waypoint Identifier	Fly Over	Course °M(°T)	Magnetic Variation	Distance (NM)	Turn Direction	Altitude (ft)	Speed Limit (kt)	Navigation Specification
IF	TOPNO	-	-	-	-	-	-	-	RNAV1/RNP1 (1)
TF	BD472	-	089 (092.5)	-	19.2	-	+FL90 (2)	-	RNAV1/RNP1 (1)
TF	BD452	-	065 (069.3)	-	20.0	-	+FL90 (2)	-	RNAV1/RNP1 (1)
TF	BD447	-	066 (069.6)	-	5.0	-	+FL90 (2)	-220	RNAV1/RNP1 (1)
TF	GARFE	-	066 (069.7)	-	4.9	-	+FL90 (2)	-220	RNAV1/RNP1 (1)
TF	BD437	-	066 (069.7)	-	5.0	-	+4500	-220	RNAV1/RNP1 (1)
TF	BD432	-	066 (069.8)	-	5.0	-	+4500	-220	RNAV1/RNP1 (1)
TF	BD425	-	336 (339.9)	-	7.0	L	+4500	-210	RNAV1/RNP1 (1)
TF	SEXVO	-	246 (249.9)	-	5.0	L	+4000	-210	RNAV1/RNP1 (1)
TF	OSMAL	-	246 (249.8)	-	6.0	-	+4000	-210	RNAV1/RNP1 (1)

**TOPNO 1T (ATC Discretion)**

Path Terminator	Waypoint Identifier	Fly Over	Course °M(°T)	Magnetic Variation	Distance (NM)	Turn Direction	Altitude (ft)	Speed Limit (kt)	Navigation Specification
IF	TOPNO	-	-	-	-	-	-	-	RNAV1/RNP1 (1)
TF	BD672	-	045 (049.1)	-	18.7	-	+4000	-	RNAV1/RNP1 (1)
TF	URCIM	-	065 (069.3)	-	20.0	-	+4000	-	RNAV1/RNP1 (1)
TF	BD547	-	066 (069.5)	-	5.0	-	-5000 +4000 (4)	-220	RNAV1/RNP1 (1)
TF	ARZUV	-	066 (069.6)	-	4.9	-	+4000	-220	RNAV1/RNP1 (1)
TF	BD537	-	066 (069.7)	-	5.0	-	+4000	-220	RNAV1/RNP1 (1)
TF	BD532	-	066 (069.7)	-	5.0	-	+4000	-220	RNAV1/RNP1 (1)
TF	BD425	-	156 (159.8)	-	7.0	R	+4000	-210	RNAV1/RNP1 (1)
TF	SEXVO	-	246 (249.9)	-	5.0	R	+4000	-210	RNAV1/RNP1 (1)
TF	OSMAL	-	246 (249.8)	-	6.0	-	+4000	-210	RNAV1/RNP1 (1)

**REMARKs**

- (1) For “monitoring and alerting” reasons, RNP1 specification is required in case of radar service unavailability or degradation
- (2) MEA 4500FT ATC Discretion
- (3) Not available during activation periods of zone LI R310
- (4) BD547 between +4000FT and -5000FT only for direct routing to IF BD572 of RNP approach RWY 25
- (5) ARZUV between +4000FT and -5000FT only for direct routing to IF BD572 of RNP approach RWY 25



**Holding RNAV**

Path Terminator	Waypoint Identifier	Inbound Course °M (°T)	Leg Distance (NM) (1)	Timing(min.)/ Waypoint Distance (NM) (2)	Turn Direction	Minimum Altitude (FT)	Maximum Altitude (FL)	Speed Limit (kt)	Magnetic Variation (°)	Navigation Specification
HM	OSMAL	255 (258.6)	3.8	1/-	R	+4000	-	-210	4 E	RNAV1

(1) RNAV system with holding functionality

(2) RNAV system without holding functionality

**WAYPOINT LIST**

Waypoint Identifier	Coordinates
BD425	41° 16' 42.46" N 017° 17' 55.91" E
BD432	41° 10' 07.97" N 017° 21' 07.62" E
BD437	41° 08' 24.49" N 017° 14' 54.84" E
BD447	41° 04' 59.22" N 017° 02' 39.94" E
BD452	41° 03' 14.72" N 016° 56' 28.10" E
BD472	40° 56' 13.31" N 016° 31' 43.90" E
BD532	41° 23' 16.87" N 017° 14' 43.59" E
BD537	41° 21' 33.07" N 017° 08' 29.70" E
BD547	41° 18' 07.17" N 016° 56' 12.62" E
BD568	41° 33' 26.36" N 017° 22' 30.09" E
BD649	41° 00' 06.41" N 017° 11' 54.58" E
BD654	41° 01' 50.08" N 017° 18' 06.49" E
BD659	41° 29' 51.20" N 017° 11' 30.64" E
BD672	41° 09' 19.65" N 016° 25' 11.15" E
BD749	41° 26' 22.94" N 016° 59' 02.07" E
BD759	41° 03' 33.40" N 017° 24' 18.72" E