

SCALE 1:250.000



FIS Roma Information 125.750
 Brindisi Information 131.125
 APP Roma Radar 118.800 (133.250)
 AFIS Crotona Aerodrome INFO CH 119.105

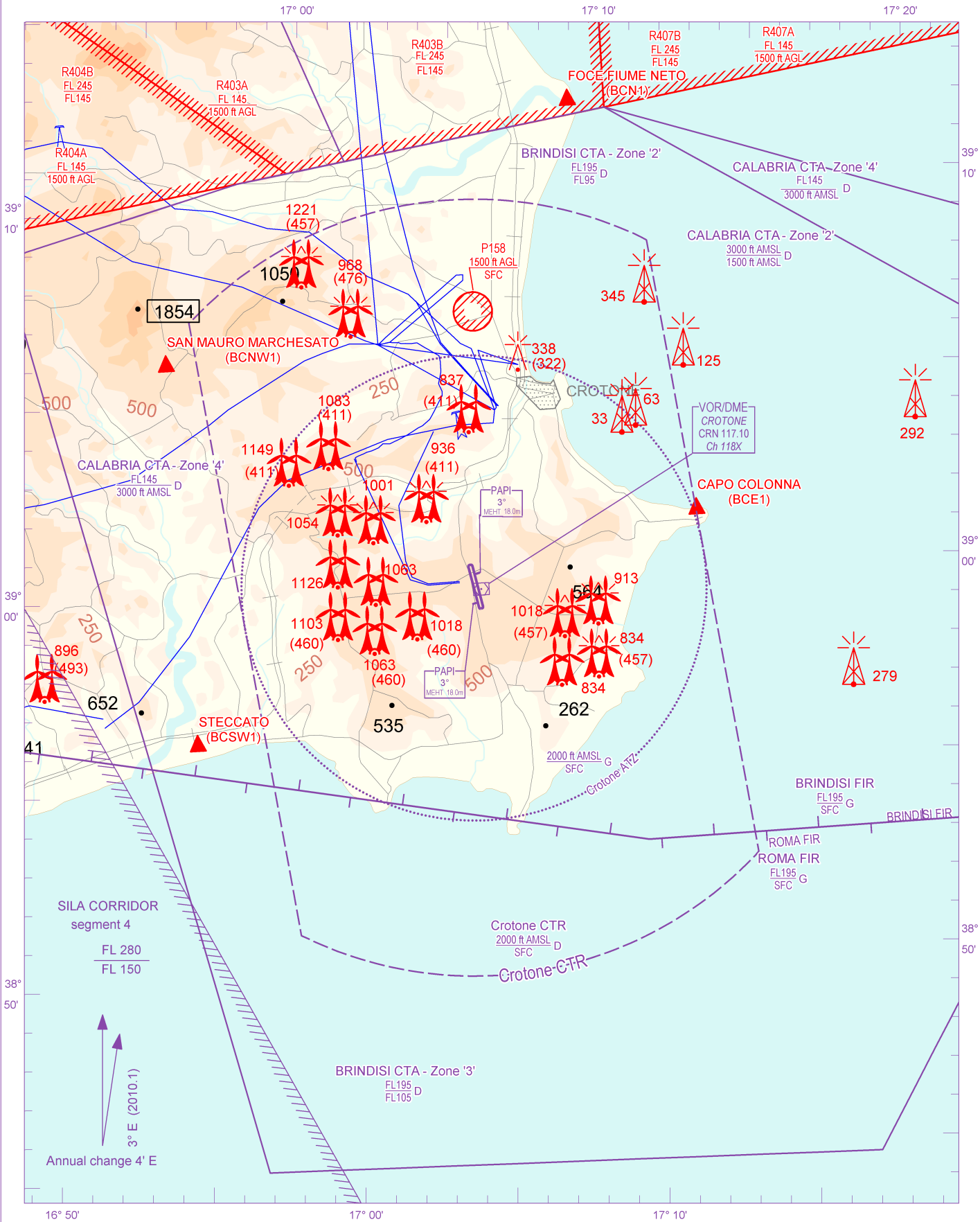
AD ELEV

522

L
I
B
C

CROTONE

CHANGE: BOX FREQ UPDATED



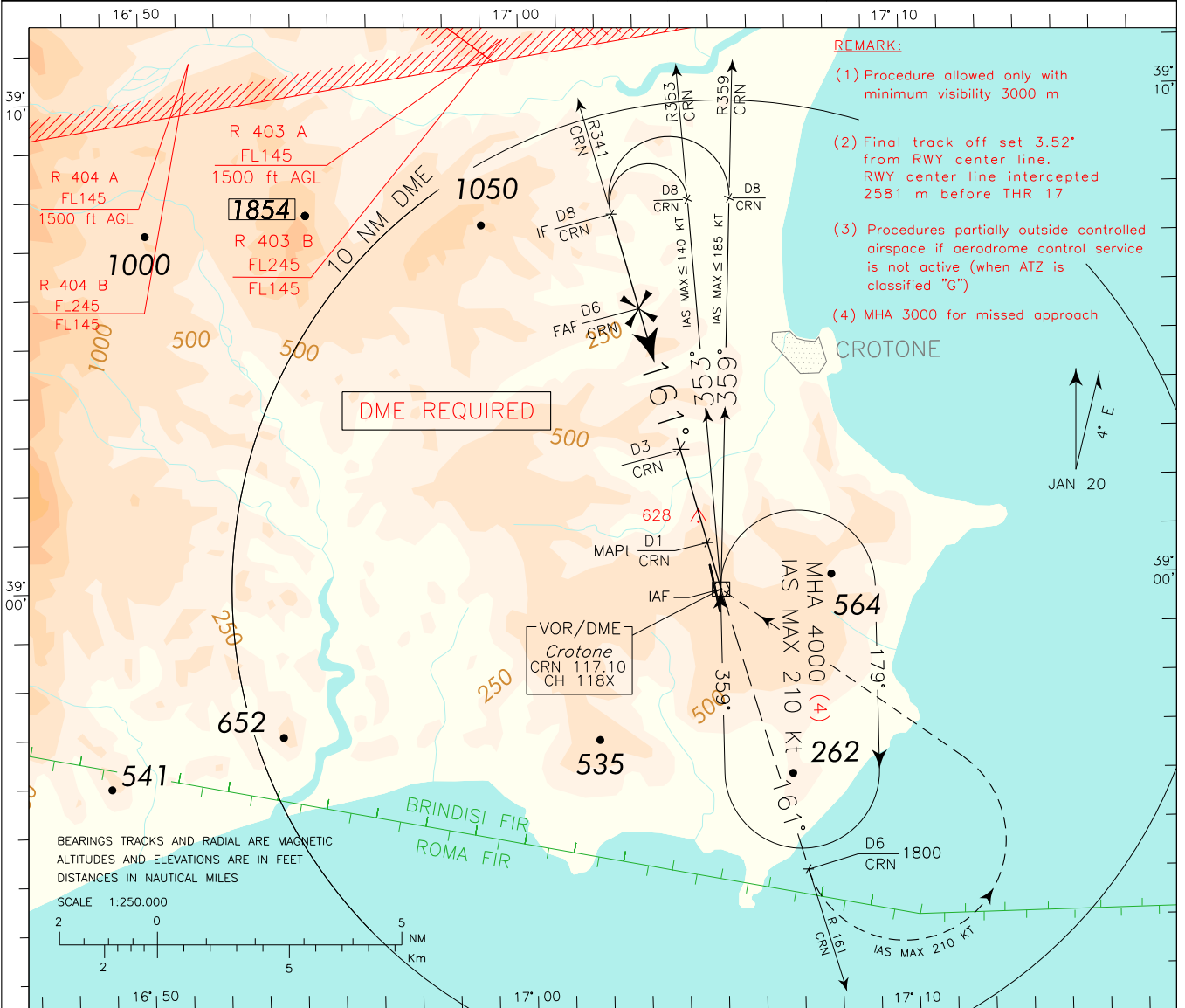
AIRSPACE CLASSIFICATION See AIP ENR 1.4	REMARK	WARNING
TRANSITION ALT 6000 FT		
ELEV AND ALT IN FT IF NOT OTHERWISE INDICATED		

ICAO – INSTRUMENT APPROACH CHART

AD 2 LIBC 5-3

DOC 8168 ED.5 – 2006 – AMDT 4
CHANGE: MAG VAR AND BOX FREQ UPDATED

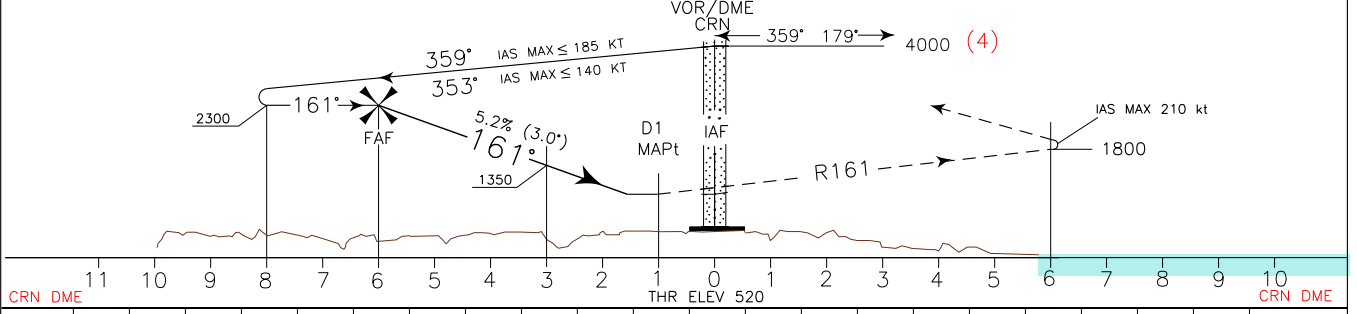
<p>WARNING : Users of this procedure shall assure themselves in every circumstance their safety with regard to other aircraft which may operate near aerodrome.</p>	APP Roma Radar	118.800 (133.250)	AD ELEV	L I B C	CROTONE
	AFIS Crotone Aerodrome INFO	CH 119.105	522		VOR Z RWY 17



- REMARK:**
- (1) Procedure allowed only with minimum visibility 3000 m
 - (2) Final track off set 3.52' from RWY center line. RWY center line intercepted 2581 m before THR 17
 - (3) Procedures partially outside controlled airspace if aerodrome control service is not active (when ATZ is classified "G")
 - (4) MHA 3000 for missed approach

TRANSITION ALT 6000
MISSED APPROACH: At 1 NM CRN DME proceed on RDL 161 CRN VOR (TR 161°) climbing to 3000 ft. At 6 NM CRN DME at 1800 ft or above turn left (IAS MAX 210 kt) to CRN VOR holding pattern to be reached at 3000 ft.

REMARK: Missed approach obstacles clearance is provided by 2.5% gradient. 4.0% (243ft/NM) up to reach 2000ft is required to remain inside vertical limits of controlled airspace.



OCA (OCH)		A	B	C	D	GS	FT PER MIN	FAF : MAPt 5 NM	MAPt : THR 0.45 NM	D M E	ALT (HGT)	MNM SECT ALT CRN VOR
STRAIGHT IN APPROACH	VORDME	950 (428)				80	423	3 : 45	0 : 20	6	2300(1778)	
		100	529	3 : 00	0 : 16	5	1985(1463)					
		120	634	2 : 30	0 : 14	4	1665(1143)					
		140	740	2 : 09	0 : 12	3	1350(828)					
		160	846	1 : 53	0 : 10	2	1030(508)					
CIRCLING		1350(828)	1370(848)	1540 (1018)						1	715 (193)	

FIX/POINT	Coordinates (WGS84)
IAF (CRN VOR/DME)	38°59'46.0" N 017°04'59.0" E
IF	39°07'30.7" N 017°02'23.0" E
FAF	39°05'34.5" N 017°03'02.0" E
RDL342/3NM CRN VOR/DME	39°02'40.2" N 017°04'00.6" E
MAPt	39°00'44.0" N 017°04'39.5" E

ICAO – INSTRUMENT APPROACH CHART

AD 2 LIBC 5-5

DOC 8168 ED.5 2006 – AMDT 4

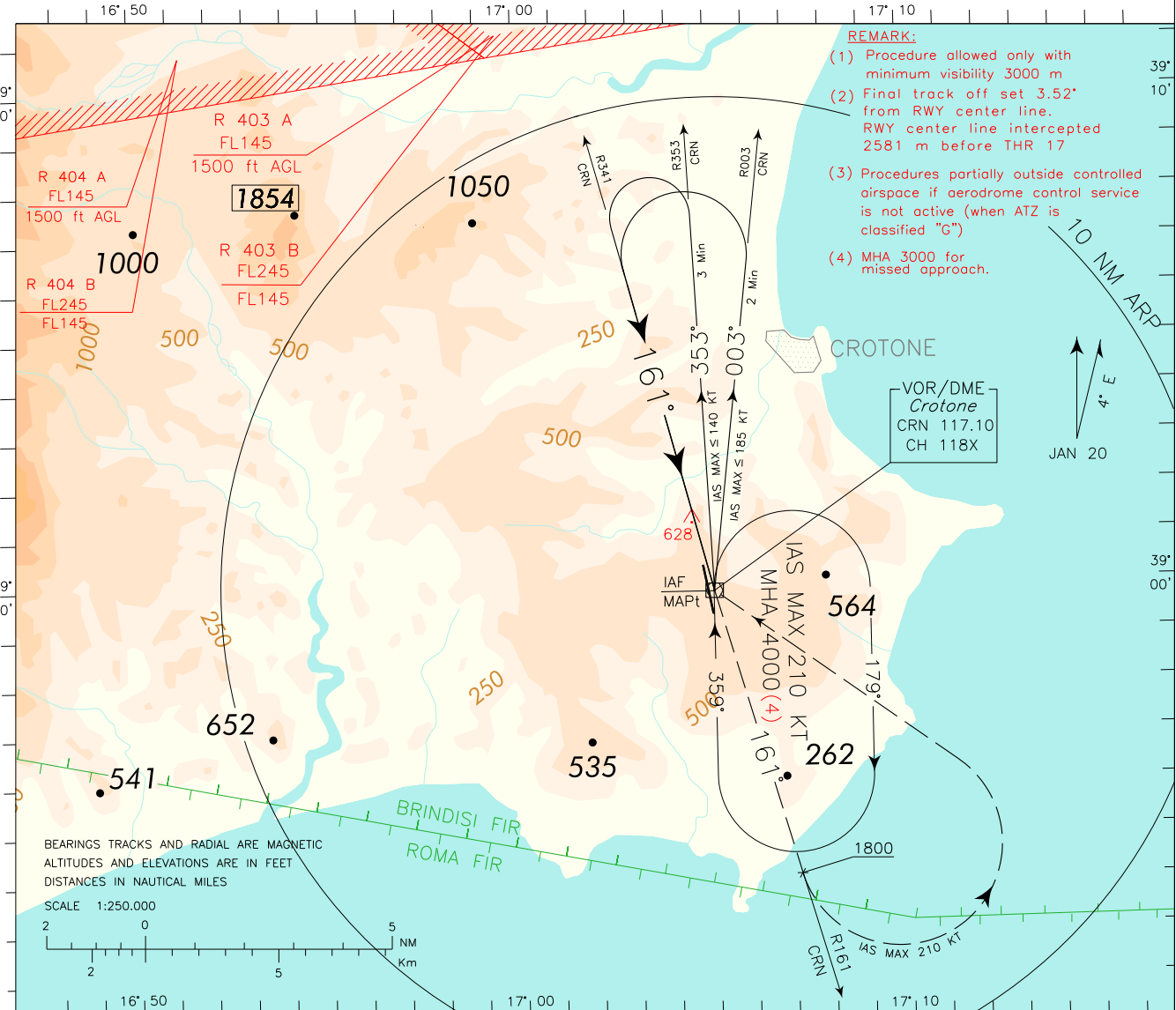
WARNING : Users of this procedure shall assure themselves in every circumstance their safety with regard to other aircraft which may operate near aerodrome.

APP Roma Radar 118.800 (133.250)
 AFIS Crotone Aerodrome INFO CH 119.105

AD ELEV 522

CROTONE
 VOR Y RWY17

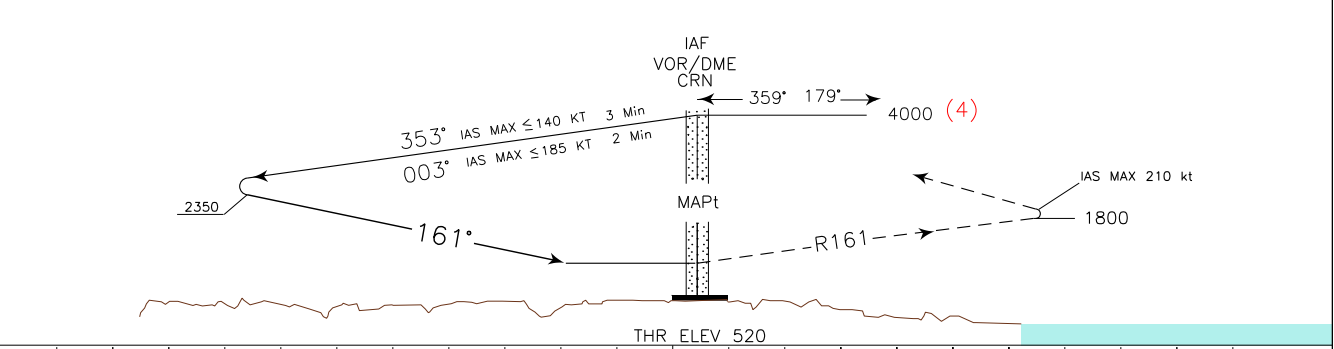
CHANGE: MAG VAR AND BOX FREQ UPDATED



- REMARK:**
- (1) Procedure allowed only with minimum visibility 3000 m
 - (2) Final track off set 3.52° from RWY center line. RWY center line intercepted 2581 m before THR 17
 - (3) Procedures partially outside controlled airspace if aerodrome control service is not active (when ATZ is classified "G")
 - (4) MHA 3000 for missed approach.

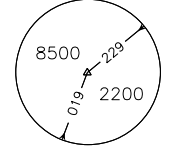
TRANSITION ALT 6000

MISSED APPROACH: Over CRN VOR proceed on RDL 161 CRN VOR (track 161°) climbing to 3000 ft, crossing 1800 ft or above, turn left (IAS MAX 210 kt) to CRN VOR holding pattern to be reached at 3000ft.



NM 11 10 9 8 7 6 5 4 3 2 1 0 1 2 3 4 5 6 7 8 9 10 NM

OCA (OCH)		A	B	C	D	GS	FT PER MIN	MNM SECT ALT		
STRAIGHT IN APPROACH	VOR	1690 (1168)						CRN	VOR	8500
CIRCLING		1690 (1168)								



FIX/POINT	Coordinates (WGS84)
IAF (CRN VOR/DME)	38°59'46.0" N 017°04'59.0" E
MAPt (CRN VOR/DME)	38°59'46.0" N 017°04'59.0" E

ICAO – INSTRUMENT APPROACH CHART

AD2 LIBC 5-7

DOC 8168 ED.5 – 2006 – AMDT 4

CHANGE: MAG VAR AND BOX FREQ UPDATED

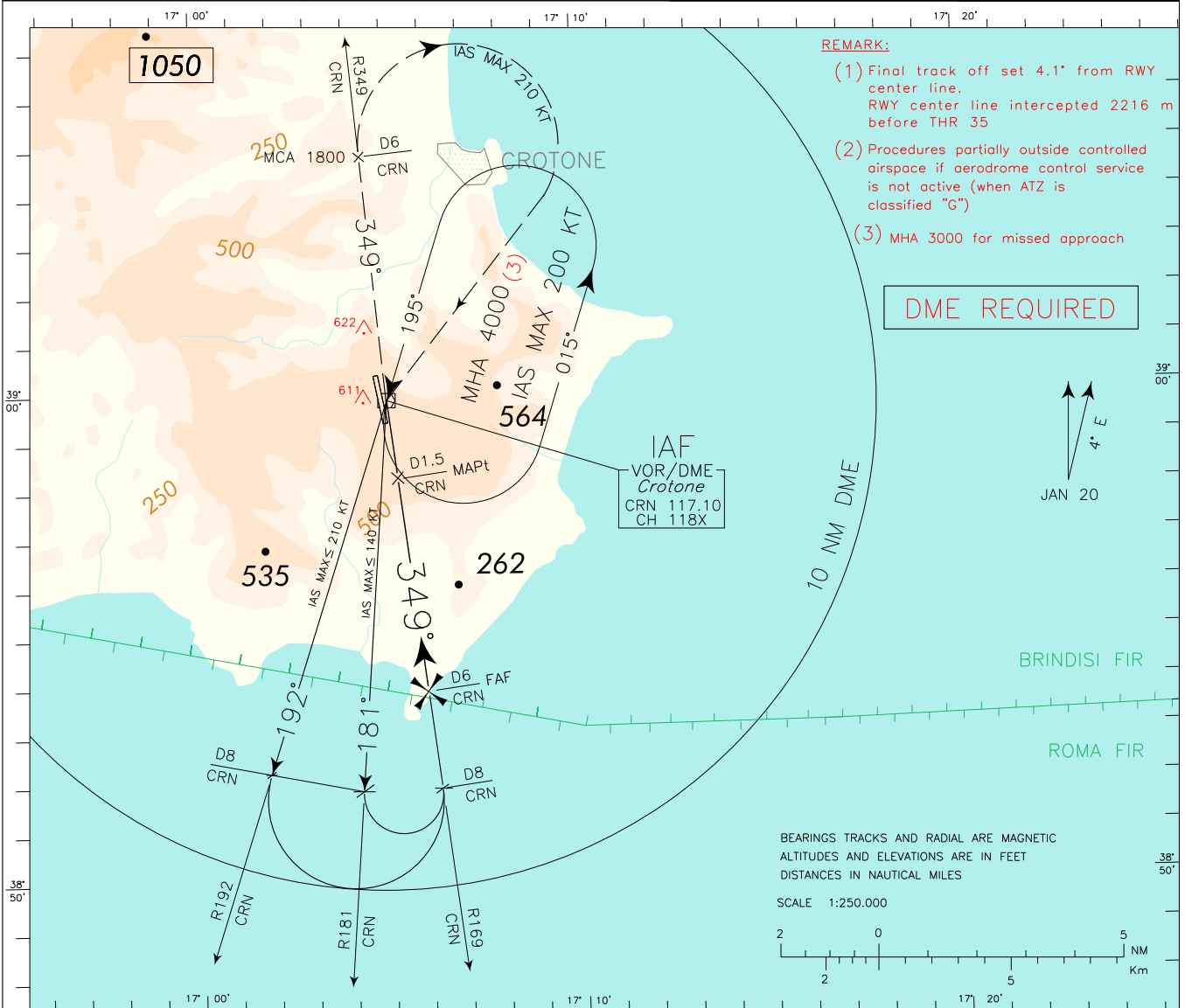
WARNING : Users of this procedure shall assure themselves in every circumstance their safety with regard to other aircraft which may operate near aerodrome.

APP Roma Radar 118.800 (133.250)
 AFIS Crotone Aerodrome INFO CH 119.105

AD ELEV 522

L
I
B
C

CROTONE
 VOR Z RWY 35



REMARK:

- (1) Final track off set 4.1' from RWY center line. RWY center line intercepted 2216 m before THR 35
- (2) Procedures partially outside controlled airspace if aerodrome control service is not active (when ATZ is classified "C")
- (3) MHA 3000 for missed approach

DME REQUIRED



BEARINGS TRACKS AND RADIAL ARE MAGNETIC
 ALTITUDES AND ELEVATIONS ARE IN FEET
 DISTANCES IN NAUTICAL MILES

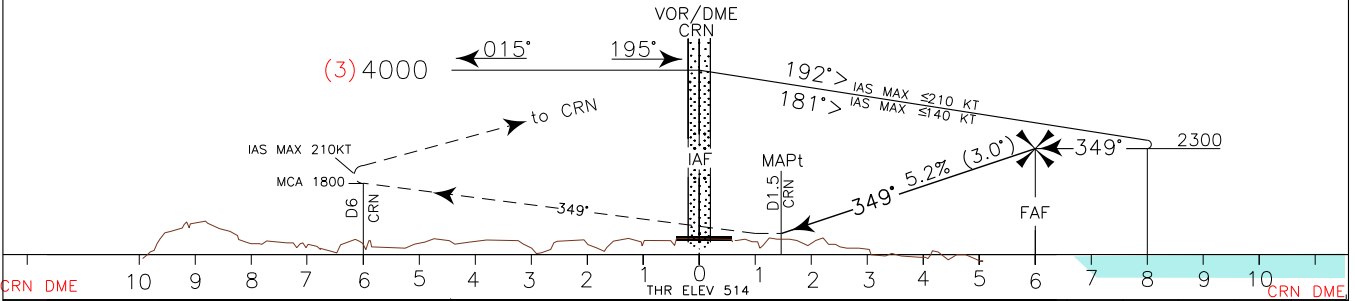
SCALE 1:250,000



TRANSITION ALT 6000

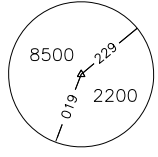
MISSED APPROACH: At 1.5 NM CRN DME proceed on RDL 349 CRN VOR (TR 349°) climbing to 3000 ft. At 6 NM after CRN DME, at 1800 ft or above, turn right (IAS MAX 210kt) bound to CRN VOR holding pattern to be reached at 3000ft.

REMARK: Missed approach obstacles clearance is provided by 2.5% gradient. 4.0% (243ft/NM) up to reach 2000ft is required to remain inside vertical limits of controlled airspace.



NM 11 10 9 8 7 6 5 4 3 2 1 0 1 2 3 4 5 6 7 8 9 10 NM

STRAIGHT IN APPROACH	OCA (OCH)				GS	FT PER MIN	FAF:MAPt 4.5 NM	MAPt:THR 1.05 NM	DME	ALT (HGT)	MNM SECT ALT	
	A	B	C	D							VOR	CRN
VORDME	910 (396)				80	417	3 : 23	0 : 47	6	2300(1786)		
					100	522	2 : 42	0 : 38	5	1985(1471)		
					120	626	2 : 15	0 : 31	4	1675(1161)		
					140	730	1 : 56	0 : 27	3	1360(846)		
					160	834	1 : 41	0 : 24	2	1050(536)		
CIRCLING	1350(828)	1370(848)	1540 (1018)						1	735(221)		



FIX/POINT	Coordinates (WGS84)
IAF (CRN VOR/DME)	38°59'46.0" N 017°04'59.0" E
IF	38°51'49.0" N 017°06'13.9" E
FAF	38°53'48.3" N 017°05'55.2" E
MAPt	38°58'16.5" N 017°05'13.0" E

ICAO – INSTRUMENT APPROACH CHART

AD 2 LIBC 5-9

DOC 8168 ED.5 2006 – AMDT 4
CHANGE: MAG VAR AND BOX FREQ UPDATED

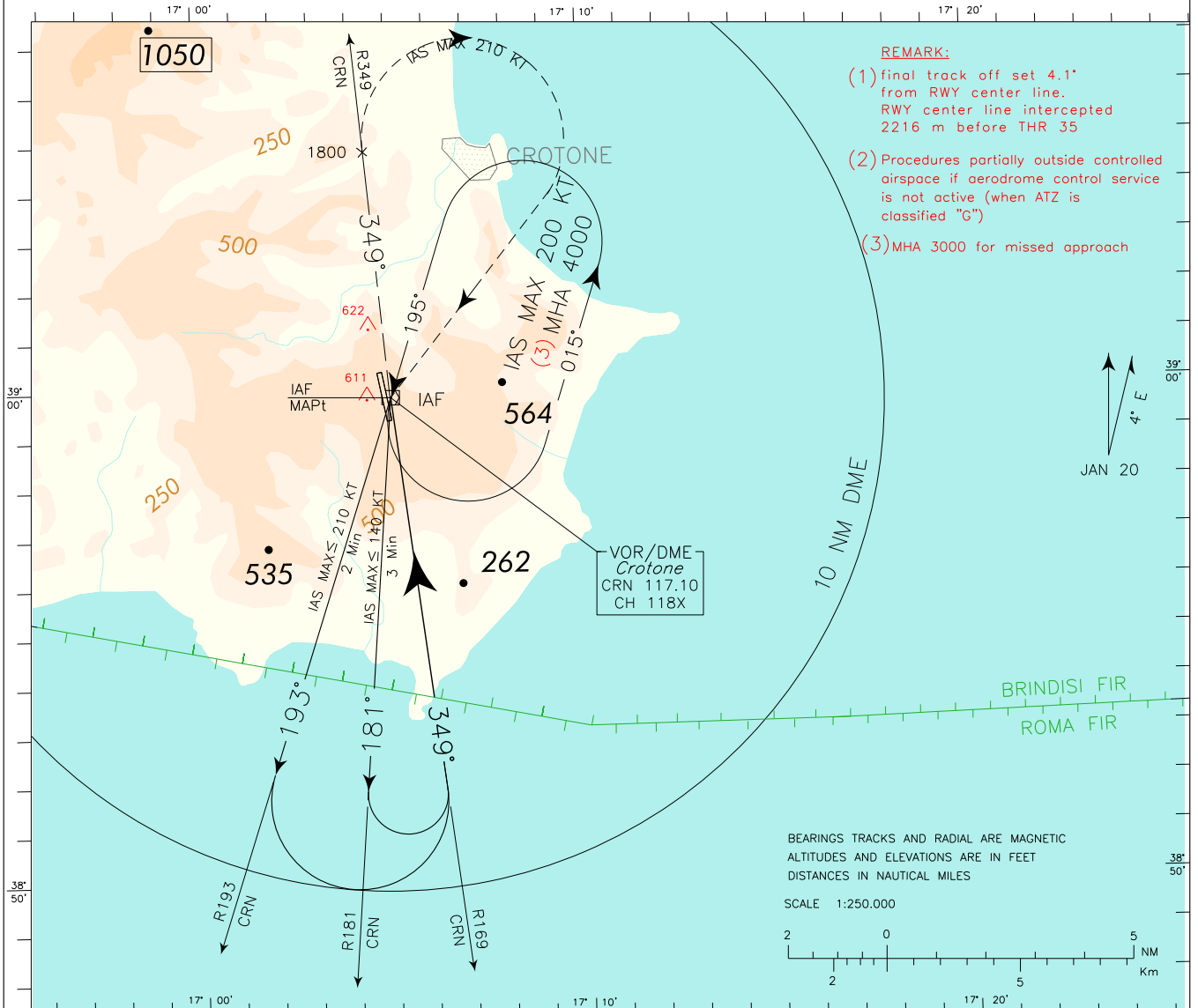
WARNING : Users of this procedure shall assure themselves in every circumstance their safety with regard to other aircraft which may operate near aerodrome.

APP Roma Radar 118.800 (133.250)
AFIS Crotone Aerodrome INFO CH 119.105

AD ELEV 522

LIBC

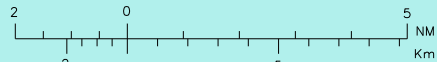
CROTONE
VOR Y RWY 35



- REMARK:**
- (1) final track off set 4.1' from RWY center line. RWY center line intercepted 2216 m before THR 35
 - (2) Procedures partially outside controlled airspace if aerodrome control service is not active (when ATZ is classified "G")
 - (3) MHA 3000 for missed approach

BEARINGS TRACKS AND RADIAL ARE MAGNETIC
ALTITUDES AND ELEVATIONS ARE IN FEET
DISTANCES IN NAUTICAL MILES

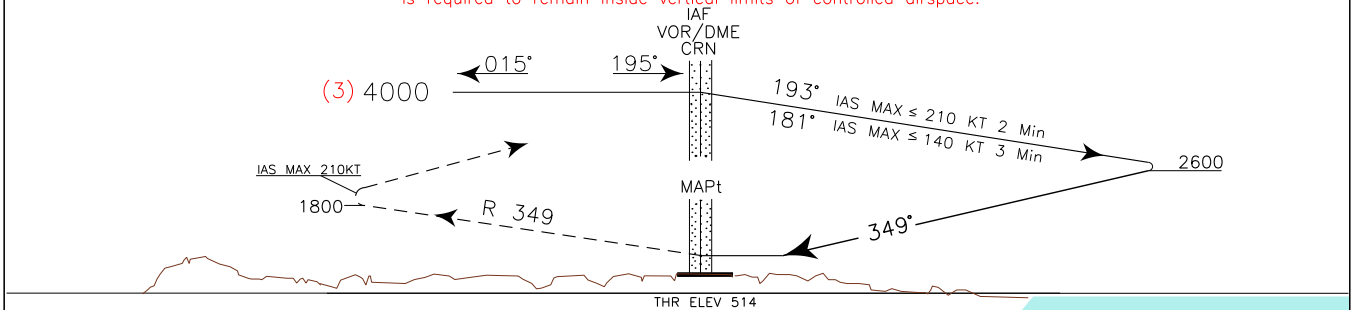
SCALE 1:250.000



TRANSITION ALT 6000

MISSED APPROACH: Over CRN VOR proceed on RDL 349 CRN VOR (track 349°) climbing to 3000 ft. Crossing 1800 ft or above turn right, with IAS MAX 210 kt, to CRN VOR holding pattern to be reached at 3000 ft.

REMARK: Missed approach obstacles clearance is provided by 2.5% gradient. 4.0% (243ft/NM) up to reach 2000ft is required to remain inside vertical limits of controlled airspace.



NM 11 10 9 8 7 6 5 4 3 2 1 0 1 2 3 4 5 6 7 8 9 10 NM

OCA (OCH)		A	B	C	D	GS	FT PER MIN	MNM SECT ALT	
STRAIGHT IN APPROACH	VOR	950 (436)						CRN	VOR
CIRCLING		1350(828)	1370(848)	1540 (1018)					

FIX/POINT	Coordinates (WGS84)
IAF (CRN VOR/DME)	38°59'46.0" N 017°04'59.0" E
MAPt (CRN VOR/DME)	38°59'46.0" N 017°04'59.0" E

ICAO – INSTRUMENT APPROACH CHART

AD 2 LIBC 5-11

DOC 8168 ED. 5 – 2006 – AMDT 4
 CHANGE: MAG VAR AND BOX FREQ UPADATED

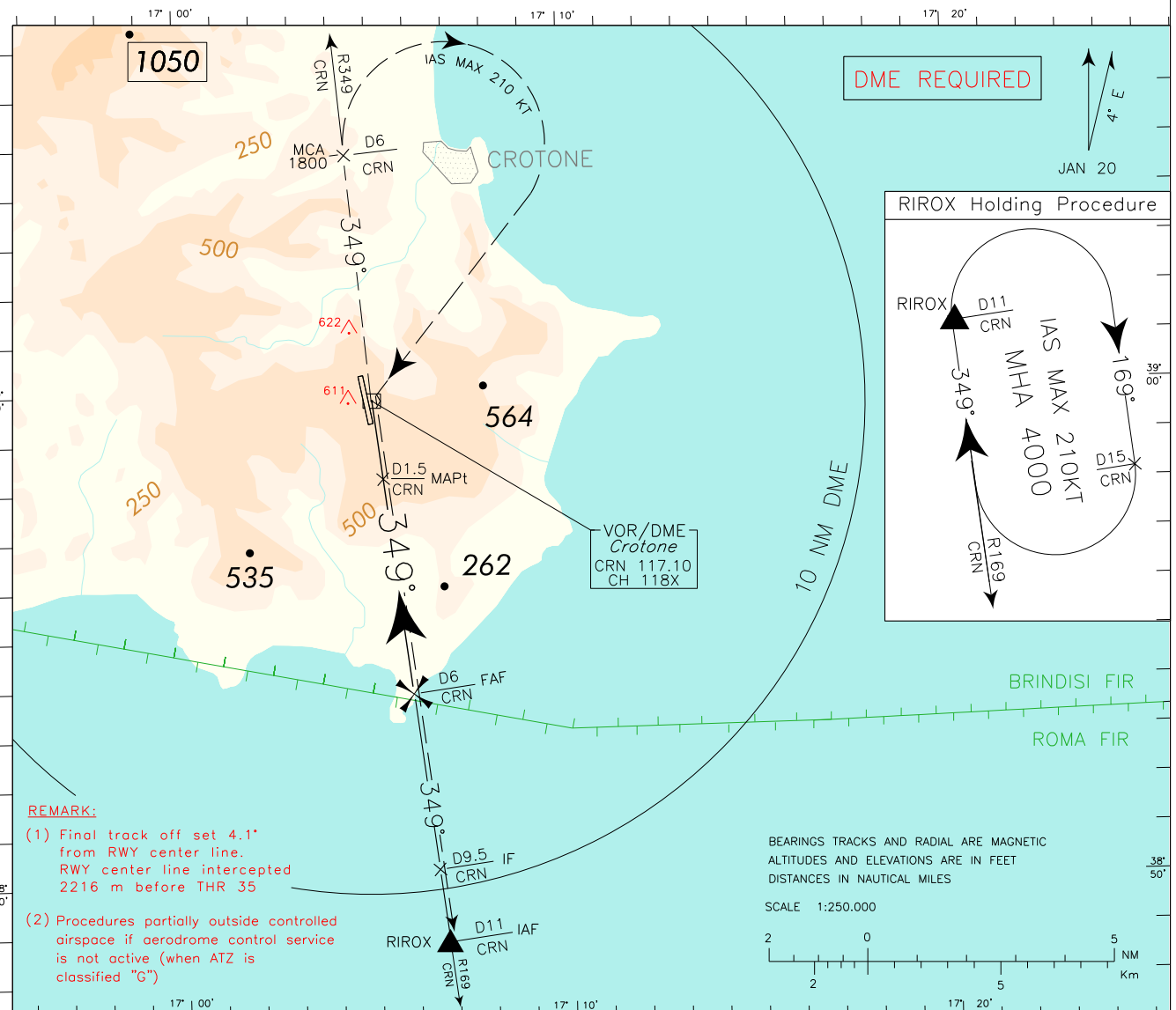
WARNING: Users of this procedure shall assure themselves in every circumstance their safety with regard to other aircraft which may operate near aerodrome.

APP Roma Radar 118.800 (133.250)
 AFIS Crotone Aerodrome INFO CH 119.105

AD ELEV 522

L
I
B
C

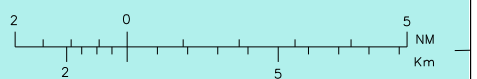
CROTONE
 VOR X RWY 35



REMARK:
 (1) Final track off set 4.1' from RWY center line. RWY center line intercepted 2216 m before THR 35
 (2) Procedures partially outside controlled airspace if aerodrome control service is not active (when ATZ is classified "G")

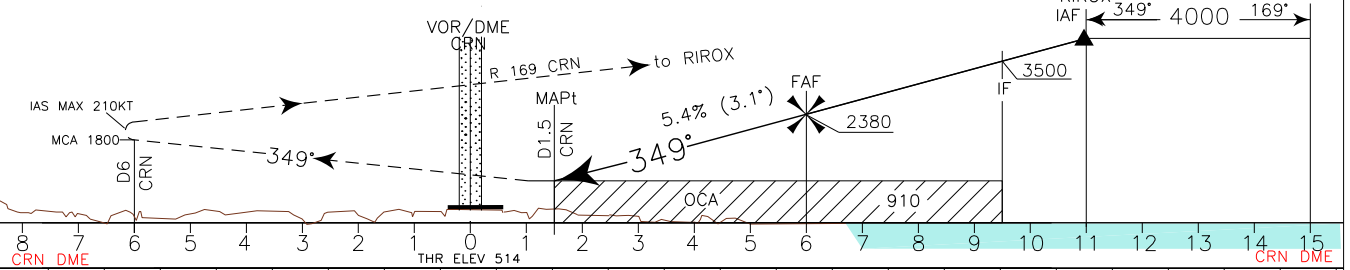
BEARINGS TRACKS AND RADIAL ARE MAGNETIC
 ALTITUDES AND ELEVATIONS ARE IN FEET
 DISTANCES IN NAUTICAL MILES

SCALE 1:250.000



TRANSITION ALT 6000 MISSED APPROACH: At 1.5 NM CRN DME proceed on RDL 349 CRN VOR (TR 349°) climbing to 4000 ft. On RDL349/6NM CRN VOR/DME, at 1800 ft or above, turn right (IAS MAX 210 kt) to CRN VOR. Leave CRN VOR on RDL169 bound to RIXOX (RDL 169/11 NM CRN VOR/DME). Right turn holding pattern towards the station on RDL 169 CRN VOR between 11 NM and 15 NM CRN DME (IAS MAX 210 kt – MHA 4000 ft).

REMARK: Missed approach obstacles clearance is provided by 2.5% gradient. 4.0% (243ft/NM) up to reach 2000ft is required to remain inside vertical limits of controlled airspace.



8	7	6	5	4	3	2	1	0	1	2	3	4	5	6	7	8	9	10	11	12	13	14	15
CRN DME										CRN DME													

OCA (OCH)		A	B	C	D	GS	FT PER MIN	FAF-MAPt 4.5 NM	MAPt-THR 1.05 NM	D M E	ALT (HGT)	MNM SECT ALT CRN VOR
STRAIGHT IN APPROACH	VORDME	910 (396)				80	434	3 : 23	0 : 47	6	2380(1866)	
		100	543	2 : 42	0 : 38	5	2050(1536)					
		120	651	2 : 15	0 : 31	4	1720(1206)					
		140	760	1 : 56	0 : 27	3	1400(886)					
CIRCLING		1350(828)	1370(848)	1540 (1018)		160	868	1 : 41	0 : 24	2	1070(556)	

FIX/POINT	Coordinates (WGS84)
IAF (RIROX)	38°48'50.2" N 017°06'41.9" E
IF	38°50'19.6" N 017°06'27.9" E
FAF	38°53'48.3" N 017°05'55.2" E
MAPt	38°58'16.5" N 017°05'13.0" E