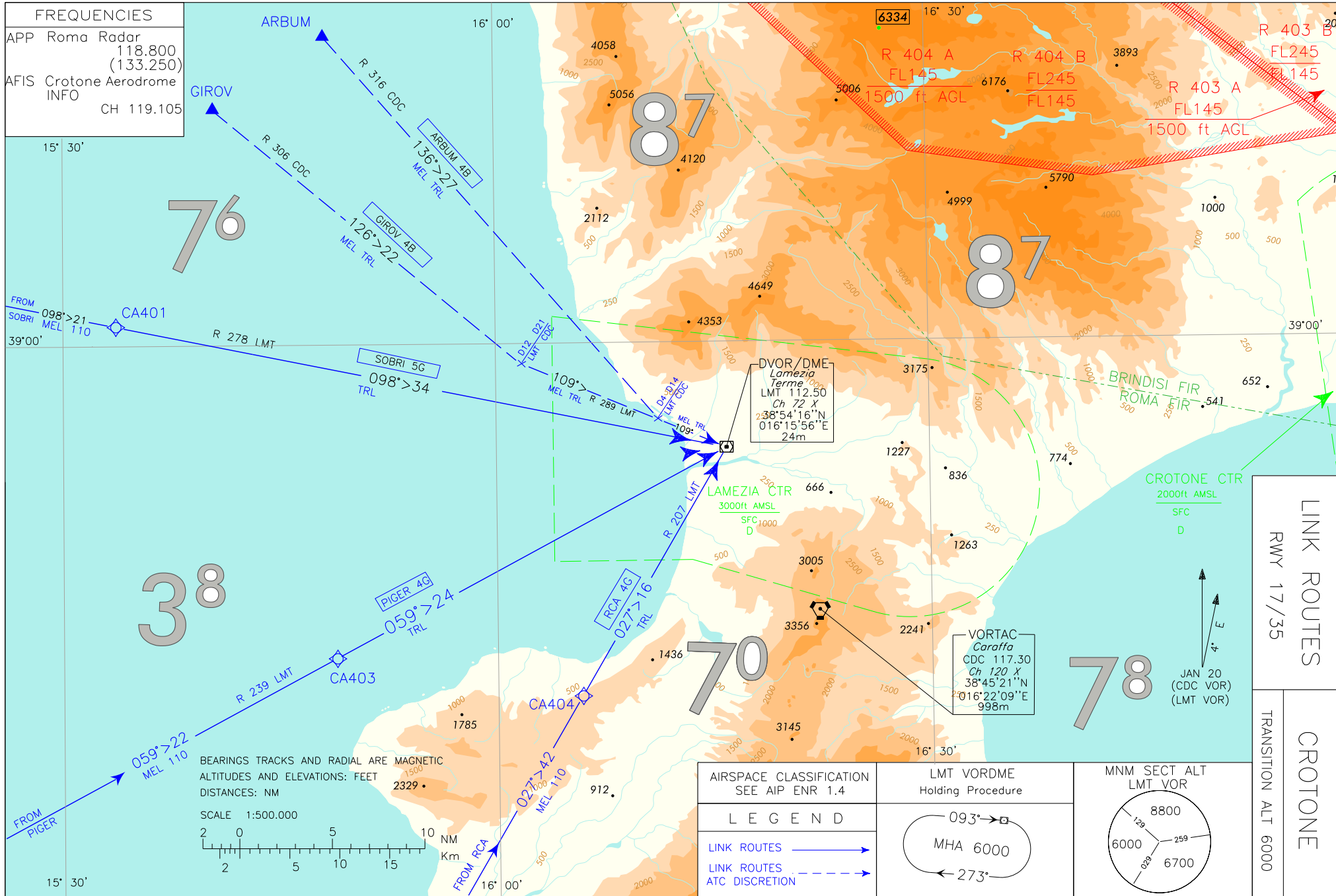


CHANGE: VULKA 4G WITHDRAWN

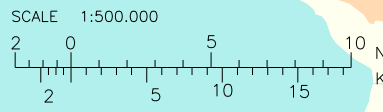
ENAV - Roma

AIP - Italia

FREQUENCIES	
APP Roma Radar	118.800 (133.250)
AFIS Crotone Aerodrome	INFO
	CH 119.105



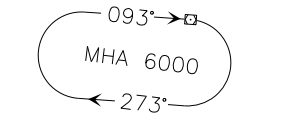
BEARINGS TRACKS AND RADIAL ARE MAGNETIC
 ALTITUDES AND ELEVATIONS: FEET
 DISTANCES: NM



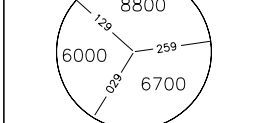
AIRSPACE CLASSIFICATION
 SEE AIP ENR 1.4

LEGEND	
LINK ROUTES	
LINK ROUTES ATC DISCRETION	

LMT VORDME
 Holding Procedure



MNM SECT ALT
 LMT VOR



LINK ROUTES Rwy 17/35	CROTONE TRANSITION ALT 6000

AIRAC effective date 11 AUG 2022 (A7/22)

AD 2 LBC 4-1

LINK ROUTES description**ARBUM 4B (ATC discretion)**

ARBUM – TR 136° (RDL 316 CDC VOR) until D14 CDC TACAN (or D4 LMT DME), then turn left on TR 109° (RDL 289 LMT VOR) bound to LMT VOR.

MEL: ARBUM – LMT VOR/DME: FL TRL

GIROV 4B (ATC discretion)

GIROV – TR 126° (RDL 306 CDC VOR) until D21 CDC TACAN (or D12 LMT DME), then turn left on TR 109° (RDL 289 LMT VOR) bound to LMT VOR.

MEL: GIROV – LMT VOR/DME: FLTRL

PIGER 4G

PIGER – RDL 239 LMT VOR (TR 059°) – LMT VOR/DME.

MEL/MEA: PIGER – CA403: FL110; CA403 – LMT VOR/DME: TRL

RCA4G

RCA VOR – RDL 027 RCA VOR (RDL 207 LMT VOR) - LMT VOR/DME.

MEL/MEA: RCA VOR – CA404: FL 110; CA404 — LMT VOR/DME: TRL

SOBRI 5G

SOBRI – RDL 278 LMT VOR (TR 098°) – LMT VOR/DME.

MEL/MEA: SOBRI – CA401: FL110; CA401 – LMT VOR/DME: TRL

Waypoint	Latitude	Longitude
CA401	N39010272	E015334219
CA403	N38430567	E015484573
CA404	N38405185	E016054809

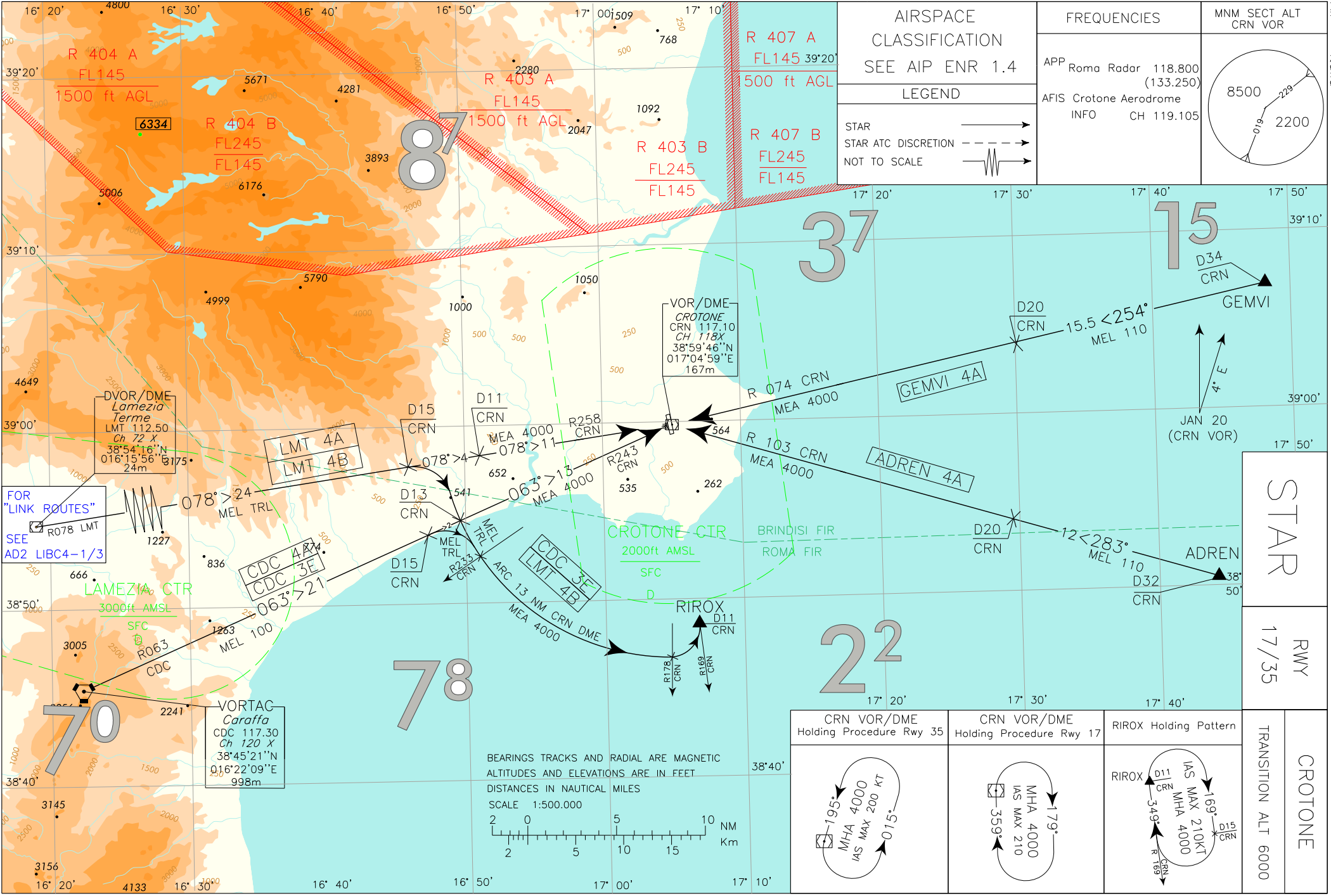
Intenzionalmente bianca

Intentionally left blank

CHANGE: MAG VAR AND BOX FREQ UPDATED

ENAV - Roma

AIRAC effective date 02 DEC 2021 (A11/21)



AIRSPACE CLASSIFICATION SEE AIP ENR 1.4	FREQUENCIES APP Roma Radar 118.800 (133.250) AFIS Crotone Aerodrome INFO CH 119.105	MNM SECT ALT CRN VOR
	LEGEND	
	STAR → STAR ATC DISCRETION → NOT TO SCALE →	

AIP - Italia

AD 2 LIBC 4-5

STAR

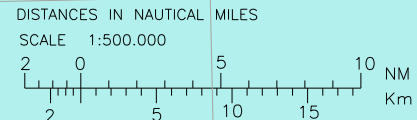
RWY 17/35

CROTONE

TRANSITION ALT 6000

CRN VOR/DME Holding Procedure Rwy 35 	CRN VOR/DME Holding Procedure Rwy 17 	RIROX Holding Pattern
--	--	---------------------------

BEARINGS TRACKS AND RADIAL ARE MAGNETIC
 ALTITUDES AND ELEVATIONS ARE IN FEET
 DISTANCES IN NAUTICAL MILES



STAR description**ADREN 4A**

ADREN –TR 283° (RDL 103 CRN VOR) – CRN VOR/DME.

MEL/MEA: ADREN – RDL 103/20 NM CRN VOR/DME FL 110; RDL 103/20 NM CRN VOR/DME – CRN VOR/DME 4000 FT

CDC 4A

CDC VORTAC – RDL 063 CDC VOR (RDL 243 CRN VOR) – CRN VOR/DME.

MEL/MEA: CDC VORTAC – RDL 243/13 NM CRN VOR/DME FL 100; RDL 243/13 NM CRN VOR/DME – CRN VOR/DME 4000 FT

CDC 3E

CDC VORTAC – RDL 063 CDC VOR (RDL 243 CRN VOR). At 15 NM CRN DME turn right to intercept and follow ARC 13 NM CRN DME. Crossing RDL 178 CRN VOR turn left bound to RIROX.

MEL/MEA: CDC VORTAC – RDL 243/15 NM CRN VOR/DME: FL 100; RDL 243/15 NM CRN VOR/DME – INT ARC 13 NM CRN DME/RDL 233 CRN VOR: TRL; INT ARC13 NM CRN DME/RDL 233 CRN VOR – RIROX: 4000 FT

GEMVI 4A

GEMVI – TR 254° (RDL 074 CRN VOR) – CRN VOR/DME.

MEL/MEA: GEMVI – RDL 074/20 NM CRN VOR/DME FL110; RDL 074/20 NM CRN VOR/DME – CRN VOR/DME 4000 FT

LMT 4A

LMT VOR/DME – RDL 078 LMT VOR (RDL 258 CRN VOR) – CRN VOR/DME.

MEL/MEA: LMT VOR/DME – RDL 258/11 NM CRN VOR/DME: TRL; RDL 258/11 NM CRN VOR/DME – CRN VOR/DME 4000 FT

LMT 4B

LMT VOR/DME – RDL 078 LMT VOR (RDL 258 CRN VOR). At 15 NM CRN DME turn right to intercept and follow ARC 13 NM CRN DME. Crossing RDL 178 CRN VOR turn left bound to RIROX.

MEL/MEA: LMT VOR/DME – INT ARC13 NM CRN DME/RDL 233 CRN VOR: TRL;
INT ARC13 NM CRN DME/RDL 233 CRN VOR – RIROX: 4000 FT

Intenzionalmente bianca

Intentionally left blank