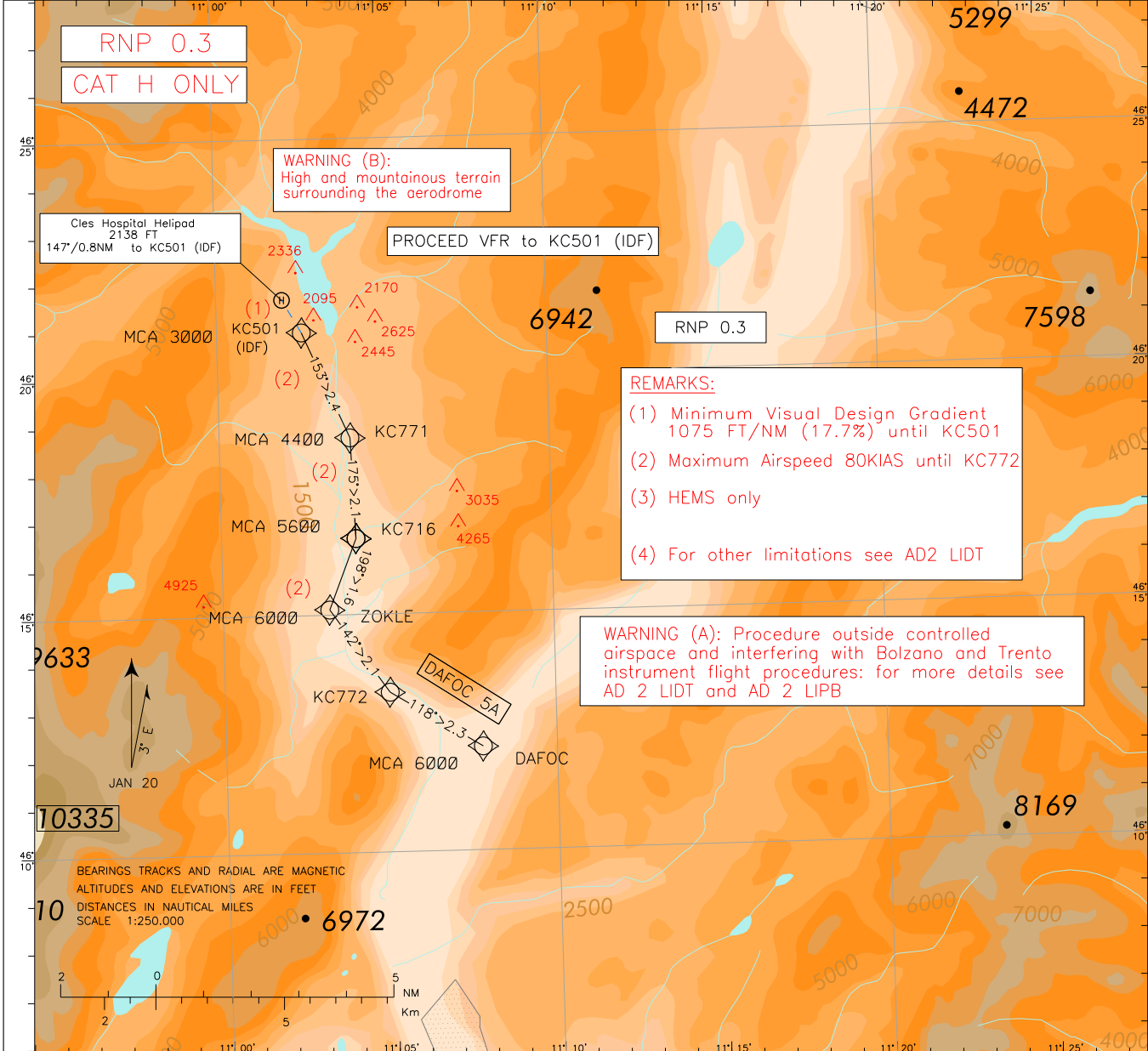


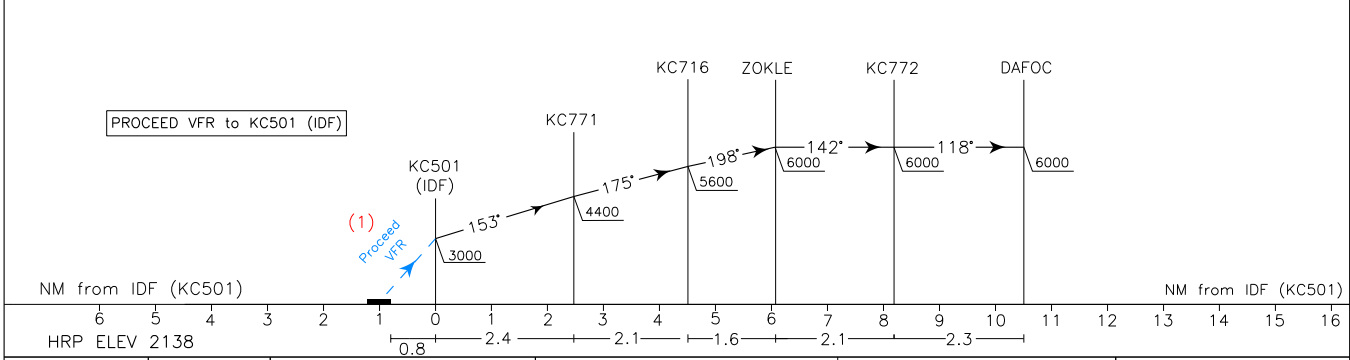
Remarks: (5) EGNOS/SBAS augmentation required	Padova ACC	120.725	HELIPAD ELEV 2138	L I K C	Cles Hospital RNP Departure DAFOC 5A
	Padova FIC	124.150			
	AFIS Trento Aerodrome Info	119.650			
	AFIS Bolzano Aerodrome Info	120.600			

DOC 8168 ED 7 – 2020 – AMDT 9

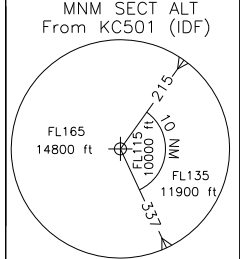
NEW CHART



TRANSITION ALT 10000



	Min Climb (FT/NM)	FT/min at GS				Take off minima	
		60	70	80	90	CEILING	VISIBILITY
Visual to KC501	1075 (17.7%)	1075	1255	1435	1615	----	----
KC501 to KC771	575 (9.5%)	575	670	765	865	----	----
KC771 to KC716	575 (9.5%)	575	670	765	865		
KC716 to ZOKLE	250 (4.1%)	250	290	330	375		
ZOKLE to DAFOC	0 (0%)	0	0	0	0		



Cles Hospital RNP DAFOC 5A Departure

Path Terminator	Waypoint identifier	Flyover	Course/Track °M (°T)	Turn Direction	Altitude Constraint (ft)	Speed Limit (kt)	Leg Distance (NM)	Navigation Specification
IF	KC501 (IDF)	-	-	-	+3000	80	-	RNP 0.3
TF	KC771	-	153 (156.6)	-	+4400	80	2.4	RNP 0.3
TF	KC716	-	175 (178.0)	-	+5600	80	2.1	RNP 0.3
TF	ZOKLE	-	198 (201.6)	-	+6000	80	1.6	RNP 0.3
TF	KC772	-	142 (145.2)	-	+6000	80	2.1	RNP 0.3
TF	DAFOC	-	118 (121.4)	-	+6000	-	2.3	RNP 0.3

Waypoints Table formatted according ARINC 424 standards

Waypoint	Latitude	Longitude
KC501	N46205634	E011023440
KC771	N46184264	E011035797
KC716	N46163571	E011040424
KC772	N46132107	E011045901
DAFOC	N46121040	E011074542
ZOKLE	N46150647	E011031328